



# Full wwPDB X-ray Structure Validation Report ⓘ

Aug 9, 2020 – 05:56 AM BST

PDB ID : 6KMP  
Title : 100K X-ray structure of HIV-1 protease triple mutant (V32I,I47V,V82I) with tetrahedral intermediate mimic KVS-1  
Authors : Das, A.; Kovalevsky, A.  
Deposited on : 2019-07-31  
Resolution : 1.31 Å(reported)

This is a Full wwPDB X-ray Structure Validation Report for a publicly released PDB entry.

We welcome your comments at [validation@mail.wwpdb.org](mailto:validation@mail.wwpdb.org)

A user guide is available at

<https://www.wwpdb.org/validation/2017/XrayValidationReportHelp>

with specific help available everywhere you see the ⓘ symbol.

---

The following versions of software and data (see [references ⓘ](#)) were used in the production of this report:

MolProbity : 4.02b-467  
Mogul : 1.8.5 (274361), CSD as541be (2020)  
Xtriage (Phenix) : 1.13  
EDS : 2.13.1  
buster-report : 1.1.7 (2018)  
Percentile statistics : 20191225.v01 (using entries in the PDB archive December 25th 2019)  
Refmac : 5.8.0158  
CCP4 : 7.0.044 (Gargrove)  
Ideal geometry (proteins) : Engh & Huber (2001)  
Ideal geometry (DNA, RNA) : Parkinson et al. (1996)  
Validation Pipeline (wwPDB-VP) : 2.13.1

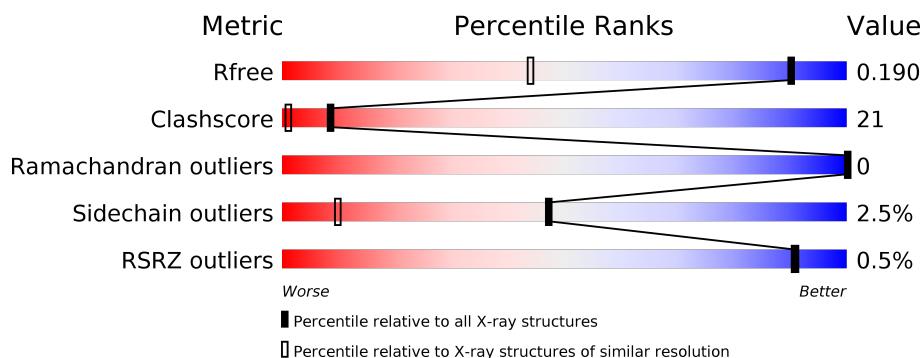
# 1 Overall quality at a glance

The following experimental techniques were used to determine the structure:

*X-RAY DIFFRACTION*



The reported resolution of this entry is 1.31 Å.

Percentile scores (ranging between 0-100) for global validation metrics of the entry are shown in the following graphic. The table shows the number of entries on which the scores are based.



Metric	Whole archive (#Entries)	Similar resolution (#Entries, resolution range(Å))
$R_{free}$	130704	1611 (1.34-1.30)
Clashscore	141614	1667 (1.34-1.30)
Ramachandran outliers	138981	1615 (1.34-1.30)
Sidechain outliers	138945	1615 (1.34-1.30)
RSRZ outliers	127900	1580 (1.34-1.30)

The table below summarises the geometric issues observed across the polymeric chains and their fit to the electron density. The red, orange, yellow and green segments on the lower bar indicate the fraction of residues that contain outliers for  $\geq 3$ , 2, 1 and 0 types of geometric quality criteria respectively. A grey segment represents the fraction of residues that are not modelled. The numeric value for each fraction is indicated below the corresponding segment, with a dot representing fractions  $\leq 5\%$ . The upper red bar (where present) indicates the fraction of residues that have poor fit to the electron density. The numeric value is given above the bar.

Mol	Chain	Length	Quality of chain
1	A	99	 78% 20% ..
1	B	99	 84% 11% 5%

The following table lists non-polymeric compounds, carbohydrate monomers and non-standard residues in protein, DNA, RNA chains that are outliers for geometric or electron-density-fit criteria:

Mol	Type	Chain	Res	Chirality	Geometry	Clashes	Electron density
2	KVS	B	201[B]	-	-	X	-

## 2 Entry composition

There are 3 unique types of molecules in this entry. The entry contains 2120 atoms, of which 0 are hydrogens and 0 are deuteriums.

In the tables below, the ZeroOcc column contains the number of atoms modelled with zero occupancy, the AltConf column contains the number of residues with at least one atom in alternate conformation and the Trace column contains the number of residues modelled with at most 2 atoms.

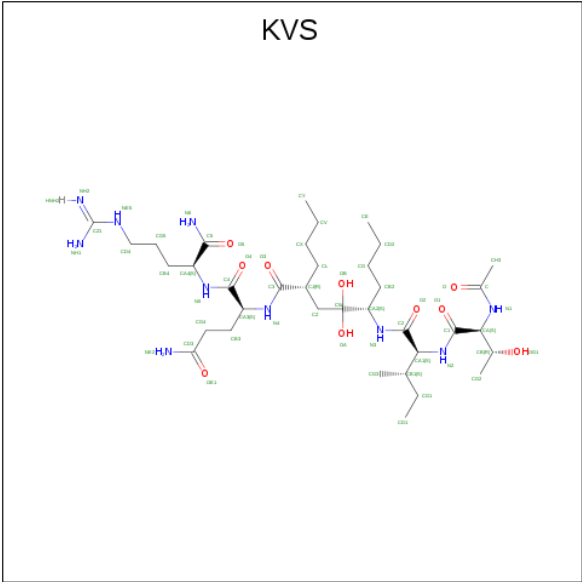
- Molecule 1 is a protein called Protease.

Mol	Chain	Residues	Atoms					ZeroOcc	AltConf	Trace
1	A	99	Total	C	N	O	S	0	7	0
			800	524	137	137	2			
1	B	99	Total	C	N	O	S	0	5	0
			785	511	135	136	3			

There are 16 discrepancies between the modelled and reference sequences:

Chain	Residue	Modelled	Actual	Comment	Reference
A	7	LYS	GLN	engineered mutation	UNP Q903T0
A	32	ILE	VAL	engineered mutation	UNP Q903T0
A	33	ILE	LEU	engineered mutation	UNP Q903T0
A	47	VAL	ILE	engineered mutation	UNP Q903T0
A	63	ILE	ALA	engineered mutation	UNP Q903T0
A	67	ALA	CYS	engineered mutation	UNP Q903T0
A	82	ILE	VAL	engineered mutation	UNP Q903T0
A	95	ALA	CYS	engineered mutation	UNP Q903T0
B	7	LYS	GLN	engineered mutation	UNP Q903T0
B	32	ILE	VAL	engineered mutation	UNP Q903T0
B	33	ILE	LEU	engineered mutation	UNP Q903T0
B	47	VAL	ILE	engineered mutation	UNP Q903T0
B	63	ILE	ALA	engineered mutation	UNP Q903T0
B	67	ALA	CYS	engineered mutation	UNP Q903T0
B	82	ILE	VAL	engineered mutation	UNP Q903T0
B	95	ALA	CYS	engineered mutation	UNP Q903T0

- Molecule 2 is N 2 -[(2R,5S)-5-({(2S,3S)-2-[(N-acetyl-L-threonyl)amino]-3-methylpent-4-enoyl}amino)-2-butyl-4,4-dihydroxynonanoyl]-L-glutaminy-L-argininamide (three-letter code: KVS) (formula: C<sub>36</sub>H<sub>68</sub>N<sub>10</sub>O<sub>10</sub>) (labeled as "Ligand of Interest" by author).



Mol	Chain	Residues	Atoms				ZeroOcc	AltConf
2	B	1	Total	C	N	O	0	1
			112	72	20	20		


- Molecule 3 is water.

Mol	Chain	Residues	Atoms		ZeroOcc	AltConf
3	A	195	Total	O	0	0
			195	195		
3	B	228	Total	O	0	0
			228	228		

### 3 Residue-property plots


These plots are drawn for all protein, RNA, DNA and oligosaccharide chains in the entry. The first graphic for a chain summarises the proportions of the various outlier classes displayed in the second graphic. The second graphic shows the sequence view annotated by issues in geometry and electron density. Residues are color-coded according to the number of geometric quality criteria for which they contain at least one outlier: green = 0, yellow = 1, orange = 2 and red = 3 or more. A red dot above a residue indicates a poor fit to the electron density ( $RSRZ > 2$ ). Stretches of 2 or more consecutive residues without any outlier are shown as a green connector. Residues present in the sample, but not in the model, are shown in grey.

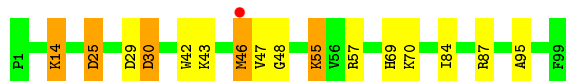
- Molecule 1: Protease

Chain A: 



- Molecule 1: Protease

Chain B: 



## 4 Data and refinement statistics

Property	Value	Source
Space group	P 2 <sub>1</sub> 2 <sub>1</sub> 2 <sub>1</sub>	Depositor
Cell constants a, b, c, $\alpha$ , $\beta$ , $\gamma$	46.07Å 57.88Å 85.24Å 90.00° 90.00° 90.00°	Depositor
Resolution (Å)	31.30 – 1.31 31.29 – 1.31	Depositor EDS
% Data completeness (in resolution range)	99.6 (31.30-1.31) 99.5 (31.29-1.31)	Depositor EDS
$R_{merge}$	0.09	Depositor
$R_{sym}$	(Not available)	Depositor
$\langle I/\sigma(I) \rangle$ <sup>1</sup>	1.69 (at 1.31Å)	Xtriage
Refinement program	REFMAC 5.7.0032	Depositor
R, $R_{free}$	0.156 , 0.188 0.158 , 0.190	Depositor DCC
$R_{free}$ test set	2020 reflections (3.65%)	wwPDB-VP
Wilson B-factor (Å <sup>2</sup> )	11.9	Xtriage
Anisotropy	0.889	Xtriage
Bulk solvent $k_{sol}$ (e/Å <sup>3</sup> ), $B_{sol}$ (Å <sup>2</sup> )	0.35 , 44.5	EDS
L-test for twinning <sup>2</sup>	$\langle  L  \rangle = 0.49$ , $\langle L^2 \rangle = 0.32$	Xtriage
Estimated twinning fraction	No twinning to report.	Xtriage
$F_o, F_c$ correlation	0.97	EDS
Total number of atoms	2120	wwPDB-VP
Average B, all atoms (Å <sup>2</sup> )	18.0	wwPDB-VP

Xtriage's analysis on translational NCS is as follows: *The largest off-origin peak in the Patterson function is 6.51% of the height of the origin peak. No significant pseudotranslation is detected.*

<sup>1</sup>Intensities estimated from amplitudes.

<sup>2</sup>Theoretical values of  $\langle |L| \rangle$ ,  $\langle L^2 \rangle$  for acentric reflections are 0.5, 0.333 respectively for untwinned datasets, and 0.375, 0.2 for perfectly twinned datasets.

## 5 Model quality [i](#)

### 5.1 Standard geometry [i](#)

Bond lengths and bond angles in the following residue types are not validated in this section: KVS

The Z score for a bond length (or angle) is the number of standard deviations the observed value is removed from the expected value. A bond length (or angle) with  $|Z| > 5$  is considered an outlier worth inspection. RMSZ is the root-mean-square of all Z scores of the bond lengths (or angles).

Mol	Chain	Bond lengths		Bond angles	
		RMSZ	$\# Z  > 5$	RMSZ	$\# Z  > 5$
1	A	1.14	0/829	1.22	6/1118 (0.5%)
1	B	1.12	0/812	1.21	3/1096 (0.3%)
All	All	1.13	0/1641	1.22	9/2214 (0.4%)

There are no bond length outliers.

All (9) bond angle outliers are listed below:

Mol	Chain	Res	Type	Atoms	Z	Observed(°)	Ideal(°)
1	B	87	ARG	NE-CZ-NH2	-10.41	115.09	120.30
1	A	29	ASP	CB-CG-OD2	-7.61	111.45	118.30
1	B	25	ASP	CB-CG-OD2	-6.54	112.41	118.30
1	A	46	MET	CG-SD-CE	-5.92	90.72	100.20
1	A	82[A]	ILE	CG1-CB-CG2	-5.61	99.06	111.40
1	A	82[B]	ILE	CG1-CB-CG2	-5.61	99.06	111.40
1	A	99	PHE	CB-CG-CD1	-5.49	116.96	120.80
1	B	30	ASP	CB-CG-OD2	5.30	123.07	118.30
1	A	99	PHE	CB-CG-CD2	5.18	124.42	120.80

There are no chirality outliers.

There are no planarity outliers.

### 5.2 Too-close contacts [i](#)

In the following table, the Non-H and H(model) columns list the number of non-hydrogen atoms and hydrogen atoms in the chain respectively. The H(added) column lists the number of hydrogen atoms added and optimized by MolProbity. The Clashes column lists the number of clashes within the asymmetric unit, whereas Symm-Clashes lists symmetry related clashes.



Mol	Chain	Non-H	H(model)	H(added)	Clashes	Symm-Clashes
1	A	800	0	884	36	0
1	B	785	0	855	25	0
2	B	112	0	130	31	0
3	A	195	0	0	14	1
3	B	228	0	0	9	1
All	All	2120	0	1869	74	1

The all-atom clashscore is defined as the number of clashes found per 1000 atoms (including hydrogen atoms). The all-atom clashscore for this structure is 21.

All (74) close contacts within the same asymmetric unit are listed below, sorted by their clash magnitude.

Atom-1	Atom-2	Interatomic distance (Å)	Clash overlap (Å)
1:B:46[B]:MET:SD	1:B:55:LYS:HD2	1.88	1.13
1:B:84[B]:ILE:HD11	2:B:201[B]:KVS:HYB	1.25	1.09
1:A:82[B]:ILE:CD1	3:A:201:HOH:O	2.03	1.04
2:B:201[B]:KVS:N6	3:B:302:HOH:O	2.00	0.95
1:B:84[B]:ILE:HD11	2:B:201[B]:KVS:CY	1.97	0.95
1:B:43:LYS:HD2	3:B:411:HOH:O	1.67	0.94
1:B:30:ASP:H	2:B:201[A]:KVS:HNEA	1.13	0.93
1:A:82[B]:ILE:HD12	3:A:201:HOH:O	1.66	0.92
2:B:201[B]:KVS:NH2	3:B:303:HOH:O	2.03	0.89
1:A:30:ASP:H	2:B:201[B]:KVS:HNEA	1.23	0.84
3:A:222:HOH:O	2:B:201[B]:KVS:HH3A	1.78	0.84
1:A:7[A]:LYS:HE2	3:A:206:HOH:O	1.79	0.81
2:B:201[B]:KVS:HG5	2:B:201[B]:KVS:NH2	1.93	0.80
1:B:84[A]:ILE:HG21	2:B:201[A]:KVS:HGA	1.62	0.80
1:A:69:HIS:HE1	3:A:233:HOH:O	1.67	0.76
1:A:23:LEU:HB2	1:A:82[A]:ILE:HD11	1.66	0.76
2:B:201[B]:KVS:HH3	2:B:201[B]:KVS:C1	2.17	0.75
1:B:48:GLY:H	2:B:201[A]:KVS:HN6	1.32	0.75
1:A:23:LEU:CB	1:A:82[A]:ILE:HD11	2.16	0.74
1:B:46[B]:MET:SD	1:B:55:LYS:CD	2.72	0.74
1:A:23:LEU:HB2	1:A:82[A]:ILE:CD1	2.22	0.69
1:B:29:ASP:OD2	2:B:201[B]:KVS:HG2B	1.95	0.67
2:B:201[B]:KVS:CG5	2:B:201[B]:KVS:NH2	2.58	0.66
1:B:69:HIS:HD2	3:B:453:HOH:O	1.79	0.65
1:B:30:ASP:N	2:B:201[A]:KVS:HNEA	1.92	0.64
2:B:201[B]:KVS:CD4	3:B:317:HOH:O	2.46	0.63
1:A:64:ILE:HG21	1:A:89:LEU:HD13	1.83	0.60
1:A:82[B]:ILE:HD12	1:A:83:ASN:N	2.16	0.60
1:A:37[B]:SER:HB3	3:A:177:HOH:O	2.02	0.59

*Continued on next page...*

*Continued from previous page...*

Atom-1	Atom-2	Interatomic distance (Å)	Clash overlap (Å)
2:B:201[B]:KVS:HH3B	2:B:201[B]:KVS:HD2A	1.86	0.58
1:B:55:LYS:HZ3	1:B:55:LYS:HB3	1.69	0.57
1:B:69:HIS:HE1	3:B:464:HOH:O	1.86	0.57
1:A:42:TRP:CD2	1:A:57[B]:ARG:HD3	2.39	0.57
1:A:48:GLY:H	2:B:201[B]:KVS:HN6	1.54	0.56
1:B:25:ASP:OD2	1:B:84[B]:ILE:CG2	2.55	0.55
1:A:14[B]:LYS:HD3	1:A:65:GLU:OE1	2.07	0.54
1:B:25:ASP:OD2	1:B:84[B]:ILE:HG21	2.08	0.54
1:A:82[B]:ILE:CD1	3:A:289:HOH:O	2.54	0.54
1:B:55:LYS:HB3	1:B:55:LYS:NZ	2.22	0.54
1:A:82[B]:ILE:HD11	3:A:201:HOH:O	1.85	0.53
1:A:82[B]:ILE:HD11	3:A:289:HOH:O	2.10	0.51
2:B:201[B]:KVS:HVA	2:B:201[B]:KVS:C3	2.41	0.50
1:A:30:ASP:N	2:B:201[B]:KVS:HNEA	2.02	0.50
1:B:84[B]:ILE:CD1	2:B:201[B]:KVS:CY	2.82	0.50
2:B:201[A]:KVS:HD4	3:B:316:HOH:O	2.11	0.50
2:B:201[A]:KVS:HD4A	3:B:445:HOH:O	2.12	0.49
1:A:47:VAL:HA	2:B:201[B]:KVS:HN6A	1.78	0.49
1:B:47:VAL:HA	2:B:201[A]:KVS:HN6A	1.78	0.49
1:B:55:LYS:CB	1:B:55:LYS:NZ	2.77	0.48
1:B:25:ASP:CB	1:B:84[B]:ILE:HG23	2.43	0.48
1:A:25:ASP:OD2	2:B:201[B]:KVS:OA	2.33	0.47
1:A:82[B]:ILE:CG2	2:B:201[B]:KVS:HD2	2.45	0.47
1:A:50:ILE:HD12	2:B:201[B]:KVS:CG3	2.44	0.47
1:A:82[B]:ILE:HG21	2:B:201[B]:KVS:HD2	1.96	0.47
1:A:69:HIS:HD2	3:A:245:HOH:O	1.98	0.46
2:B:201[B]:KVS:HYA	2:B:201[B]:KVS:HL	1.56	0.46
1:B:25:ASP:HB2	1:B:84[B]:ILE:HG23	1.98	0.45
1:A:99:PHE:HB3	1:B:95:ALA:HA	1.98	0.44
1:B:42:TRP:CE2	1:B:57:ARG:HD2	2.52	0.44
1:A:14[B]:LYS:HE3	1:A:14[B]:LYS:HB3	1.79	0.44
1:A:39:PRO:HG2	3:A:162:HOH:O	2.17	0.43
1:A:23:LEU:HB3	1:A:82[A]:ILE:HD11	1.99	0.43
1:A:14[B]:LYS:HG3	3:A:179:HOH:O	2.18	0.43
1:B:70:LYS:HE2	3:B:492:HOH:O	2.18	0.43
1:A:23:LEU:CD2	1:A:82[A]:ILE:HD11	2.49	0.42
1:B:14[A]:LYS:CB	1:B:14[A]:LYS:HZ2	2.29	0.42
2:B:201[A]:KVS:HYA	2:B:201[A]:KVS:HL	1.84	0.42
1:A:82[B]:ILE:HD13	3:A:289:HOH:O	2.17	0.42
1:A:14[B]:LYS:HB2	1:A:65:GLU:HB3	2.01	0.41
1:A:23:LEU:HD22	1:A:82[A]:ILE:HD11	2.01	0.41

*Continued on next page...*

*Continued from previous page...*

Atom-1	Atom-2	Interatomic distance (Å)	Clash overlap (Å)
1:A:39:PRO:HG2	3:A:282:HOH:O	2.21	0.41
2:B:201[A]:KVS:OB	2:B:201[A]:KVS:C3	2.69	0.41
1:A:42:TRP:HA	1:A:58:GLN:O	2.21	0.40

All (1) symmetry-related close contacts are listed below. The label for Atom-2 includes the symmetry operator and encoded unit-cell translations to be applied.

Atom-1	Atom-2	Interatomic distance (Å)	Clash overlap (Å)
3:A:226:HOH:O	3:B:456:HOH:O[1_455]	1.91	0.29

## 5.3 Torsion angles [i](#)

### 5.3.1 Protein backbone [i](#)

In the following table, the Percentiles column shows the percent Ramachandran outliers of the chain as a percentile score with respect to all X-ray entries followed by that with respect to entries of similar resolution.

The Analysed column shows the number of residues for which the backbone conformation was analysed, and the total number of residues.

Mol	Chain	Analysed	Favoured	Allowed	Outliers	Percentiles	
1	A	104/99 (105%)	102 (98%)	2 (2%)	0	100	100
1	B	102/99 (103%)	102 (100%)	0	0	100	100
All	All	206/198 (104%)	204 (99%)	2 (1%)	0	100	100

There are no Ramachandran outliers to report.

### 5.3.2 Protein sidechains [i](#)

In the following table, the Percentiles column shows the percent sidechain outliers of the chain as a percentile score with respect to all X-ray entries followed by that with respect to entries of similar resolution.

The Analysed column shows the number of residues for which the sidechain conformation was analysed, and the total number of residues.

Mol	Chain	Analysed	Rotameric	Outliers	Percentiles	
1	A	88/81 (109%)	86 (98%)	2 (2%)	50	13

*Continued on next page...*

*Continued from previous page...*

Mol	Chain	Analysed	Rotameric	Outliers	Percentiles
1	B	86/81 (106%)	81 (94%)	5 (6%)	20 1
All	All	174/162 (107%)	167 (96%)	7 (4%)	47 3

All (7) residues with a non-rotameric sidechain are listed below:

Mol	Chain	Res	Type
1	A	82[A]	ILE
1	A	82[B]	ILE
1	B	14[A]	LYS
1	B	14[B]	LYS
1	B	46[A]	MET
1	B	46[B]	MET
1	B	55	LYS

Some sidechains can be flipped to improve hydrogen bonding and reduce clashes. All (4) such sidechains are listed below:

Mol	Chain	Res	Type
1	A	69	HIS
1	B	2	GLN
1	B	69	HIS
1	B	98	ASN

### 5.3.3 RNA ⓘ

There are no RNA molecules in this entry.

## 5.4 Non-standard residues in protein, DNA, RNA chains ⓘ

There are no non-standard protein/DNA/RNA residues in this entry.

## 5.5 Carbohydrates ⓘ

There are no monosaccharides in this entry.

## 5.6 Ligand geometry ⓘ

2 ligands are modelled in this entry.

In the following table, the Counts columns list the number of bonds (or angles) for which Mogul statistics could be retrieved, the number of bonds (or angles) that are observed in the model and the number of bonds (or angles) that are defined in the Chemical Component Dictionary. The Link column lists molecule types, if any, to which the group is linked. The Z score for a bond length (or angle) is the number of standard deviations the observed value is removed from the expected value. A bond length (or angle) with  $|Z| > 2$  is considered an outlier worth inspection. RMSZ is the root-mean-square of all Z scores of the bond lengths (or angles).

Mol	Type	Chain	Res	Link	Bond lengths			Bond angles		
					Counts	RMSZ	$\# Z  > 2$	Counts	RMSZ	$\# Z  > 2$
2	KVS	B	201[B]	-	53,55,55	2.04	10 (18%)	64,73,73	2.39	23 (35%)
2	KVS	B	201[A]	-	53,55,55	2.07	11 (20%)	64,73,73	2.21	17 (26%)

In the following table, the Chirals column lists the number of chiral outliers, the number of chiral centers analysed, the number of these observed in the model and the number defined in the Chemical Component Dictionary. Similar counts are reported in the Torsion and Rings columns. '-' means no outliers of that kind were identified.

Mol	Type	Chain	Res	Link	Chirals	Torsions	Rings
2	KVS	B	201[B]	-	-	26/76/81/81	-
2	KVS	B	201[A]	-	-	19/76/81/81	-

All (21) bond length outliers are listed below:

Mol	Chain	Res	Type	Atoms	Z	Observed(Å)	Ideal(Å)
2	B	201[A]	KVS	CZ1-NE5	7.03	1.47	1.33
2	B	201[B]	KVS	CZ1-NE5	6.34	1.45	1.33
2	B	201[B]	KVS	C4-N5	5.61	1.46	1.34
2	B	201[A]	KVS	CB2-CA2	-5.60	1.48	1.53
2	B	201[B]	KVS	C3-N4	5.58	1.46	1.34
2	B	201[B]	KVS	C1-N2	5.11	1.45	1.34
2	B	201[A]	KVS	C4-N5	4.71	1.44	1.34
2	B	201[A]	KVS	CZ1-NH1	4.64	1.53	1.34
2	B	201[A]	KVS	C1-N2	4.17	1.43	1.34
2	B	201[B]	KVS	C2-N3	4.14	1.43	1.34
2	B	201[A]	KVS	C3-N4	3.78	1.42	1.34
2	B	201[B]	KVS	C5-N6	3.65	1.42	1.32
2	B	201[B]	KVS	CD3-NE2	3.28	1.43	1.32
2	B	201[A]	KVS	C5-N6	3.16	1.40	1.32
2	B	201[B]	KVS	CA2-N3	-3.07	1.40	1.46
2	B	201[B]	KVS	C-N1	2.85	1.44	1.34
2	B	201[A]	KVS	C2-N3	2.59	1.39	1.34
2	B	201[A]	KVS	CH3-C	2.45	1.55	1.50
2	B	201[A]	KVS	CB4-CA4	2.43	1.59	1.53

*Continued on next page...*

*Continued from previous page...*

Mol	Chain	Res	Type	Atoms	Z	Observed(Å)	Ideal(Å)
2	B	201[B]	KVS	CD1-CG1	-2.37	1.36	1.51
2	B	201[A]	KVS	CD3-NE2	2.00	1.39	1.32

All (40) bond angle outliers are listed below:

Mol	Chain	Res	Type	Atoms	Z	Observed(°)	Ideal(°)
2	B	201[A]	KVS	CG-CB2-CA2	-7.59	96.83	114.31
2	B	201[A]	KVS	NE5-CZ1-NH2	-7.38	107.72	120.70
2	B	201[B]	KVS	O3-C3-CJ	6.60	130.70	122.12
2	B	201[B]	KVS	CA-C1-N2	6.24	129.95	116.48
2	B	201[B]	KVS	CL-CJ-C3	5.85	119.46	109.53
2	B	201[B]	KVS	CA2-N3-C2	-5.61	114.78	123.22
2	B	201[B]	KVS	CG-CB2-CA2	-5.45	101.76	114.31
2	B	201[A]	KVS	O5-C5-N6	-4.71	114.80	123.00
2	B	201[A]	KVS	O5-C5-CA4	4.48	126.82	120.27
2	B	201[A]	KVS	CD2-CG-CB2	-4.28	87.90	114.64
2	B	201[B]	KVS	C1-CA-N1	4.25	121.93	110.36
2	B	201[B]	KVS	O1-C1-N2	-4.14	115.27	122.93
2	B	201[A]	KVS	CG3-CB1-CA1	-3.65	102.02	111.02
2	B	201[B]	KVS	OG1-CB-CA	3.51	116.17	109.13
2	B	201[B]	KVS	O3-C3-N4	-3.40	116.63	122.93
2	B	201[A]	KVS	CL-CJ-C3	3.37	115.26	109.53
2	B	201[A]	KVS	CD1-CG1-CB1	3.09	126.16	113.84
2	B	201[A]	KVS	CB2-CA2-N3	-3.05	102.48	109.46
2	B	201[B]	KVS	O1-C1-CA	-2.93	114.69	120.74
2	B	201[A]	KVS	CG5-CD4-NE5	2.85	120.36	112.21
2	B	201[B]	KVS	CG5-CB4-CA4	-2.79	105.30	113.92
2	B	201[B]	KVS	CG3-CB1-CA1	2.72	117.73	111.02
2	B	201[B]	KVS	CG5-CD4-NE5	-2.69	104.51	112.21
2	B	201[A]	KVS	C2-CA1-N2	-2.69	103.05	110.36
2	B	201[B]	KVS	CZ-CJ-C3	-2.63	105.19	109.57
2	B	201[B]	KVS	O4-C4-CA3	2.62	125.97	120.45
2	B	201[B]	KVS	O4-C4-N5	-2.60	118.11	122.93
2	B	201[A]	KVS	NH1-CZ1-NH2	2.48	127.89	120.26
2	B	201[A]	KVS	CB-CA-C1	-2.41	105.97	111.28
2	B	201[B]	KVS	CD1-CG1-CB1	2.40	123.40	113.84
2	B	201[A]	KVS	O1-C1-N2	-2.27	118.72	122.93
2	B	201[B]	KVS	O2-C2-CA1	2.26	125.42	120.74
2	B	201[A]	KVS	NH1-CZ1-NE5	2.25	124.39	119.19
2	B	201[B]	KVS	C5-CA4-N5	-2.21	104.82	110.18
2	B	201[A]	KVS	CZ-CJ-CL	-2.19	103.07	117.16
2	B	201[B]	KVS	CA3-N4-C3	-2.17	117.02	121.67

*Continued on next page...*

*Continued from previous page...*

Mol	Chain	Res	Type	Atoms	Z	Observed(°)	Ideal(°)
2	B	201[B]	KVS	CG4-CB3-CA3	-2.09	109.25	113.16
2	B	201[B]	KVS	CJ-C3-N4	-2.08	112.61	116.21
2	B	201[B]	KVS	O2-C2-N3	-2.06	119.12	122.93
2	B	201[A]	KVS	CA3-N4-C3	-2.04	117.30	121.67

There are no chirality outliers.

All (45) torsion outliers are listed below:

Mol	Chain	Res	Type	Atoms
2	B	201[B]	KVS	C1-CA-CB-OG1
2	B	201[B]	KVS	C1-CA-CB-CG2
2	B	201[B]	KVS	N3-CA2-CW-CZ
2	B	201[B]	KVS	CG5-CD4-NE5-CZ1
2	B	201[B]	KVS	N3-CA2-CB2-CG
2	B	201[B]	KVS	N5-CA4-CB4-CG5
2	B	201[A]	KVS	N5-CA4-CB4-CG5
2	B	201[B]	KVS	NE5-CD4-CG5-CB4
2	B	201[B]	KVS	C5-CA4-CB4-CG5
2	B	201[A]	KVS	NE5-CD4-CG5-CB4
2	B	201[A]	KVS	N3-CA2-CB2-CG
2	B	201[B]	KVS	O-C-N1-CA
2	B	201[B]	KVS	CH3-C-N1-CA
2	B	201[B]	KVS	CA2-CB2-CG-CD2
2	B	201[A]	KVS	CA2-CB2-CG-CD2
2	B	201[B]	KVS	N1-CA-CB-OG1
2	B	201[B]	KVS	N1-CA-CB-CG2
2	B	201[B]	KVS	CW-CA2-CB2-CG
2	B	201[A]	KVS	CW-CA2-CB2-CG
2	B	201[A]	KVS	CJ-CL-CX-CV
2	B	201[B]	KVS	C1-CA-N1-C
2	B	201[A]	KVS	OE1-CD3-CG4-CB3
2	B	201[A]	KVS	CE-CD2-CG-CB2
2	B	201[B]	KVS	C3-CJ-CL-CX
2	B	201[B]	KVS	CJ-CL-CX-CV
2	B	201[A]	KVS	OA-CW-CZ-CJ
2	B	201[A]	KVS	NE2-CD3-CG4-CB3
2	B	201[A]	KVS	CA4-CB4-CG5-CD4
2	B	201[B]	KVS	O5-C5-CA4-N5
2	B	201[A]	KVS	O5-C5-CA4-N5
2	B	201[A]	KVS	N6-C5-CA4-N5
2	B	201[A]	KVS	C5-CA4-CB4-CG5
2	B	201[A]	KVS	CA3-CB3-CG4-CD3

*Continued on next page...*

*Continued from previous page...*

Mol	Chain	Res	Type	Atoms
2	B	201[A]	KVS	O2-C2-CA1-N2
2	B	201[B]	KVS	CA3-CB3-CG4-CD3
2	B	201[A]	KVS	O2-C2-CA1-CB1
2	B	201[A]	KVS	N3-C2-CA1-CB1
2	B	201[B]	KVS	N6-C5-CA4-N5
2	B	201[B]	KVS	O3-C3-CJ-CZ
2	B	201[B]	KVS	O3-C3-CJ-CL
2	B	201[A]	KVS	N3-C2-CA1-N2
2	B	201[B]	KVS	CY-CV-CX-CL
2	B	201[B]	KVS	NE2-CD3-CG4-CB3
2	B	201[B]	KVS	OE1-CD3-CG4-CB3
2	B	201[B]	KVS	N4-C3-CJ-CL

There are no ring outliers.

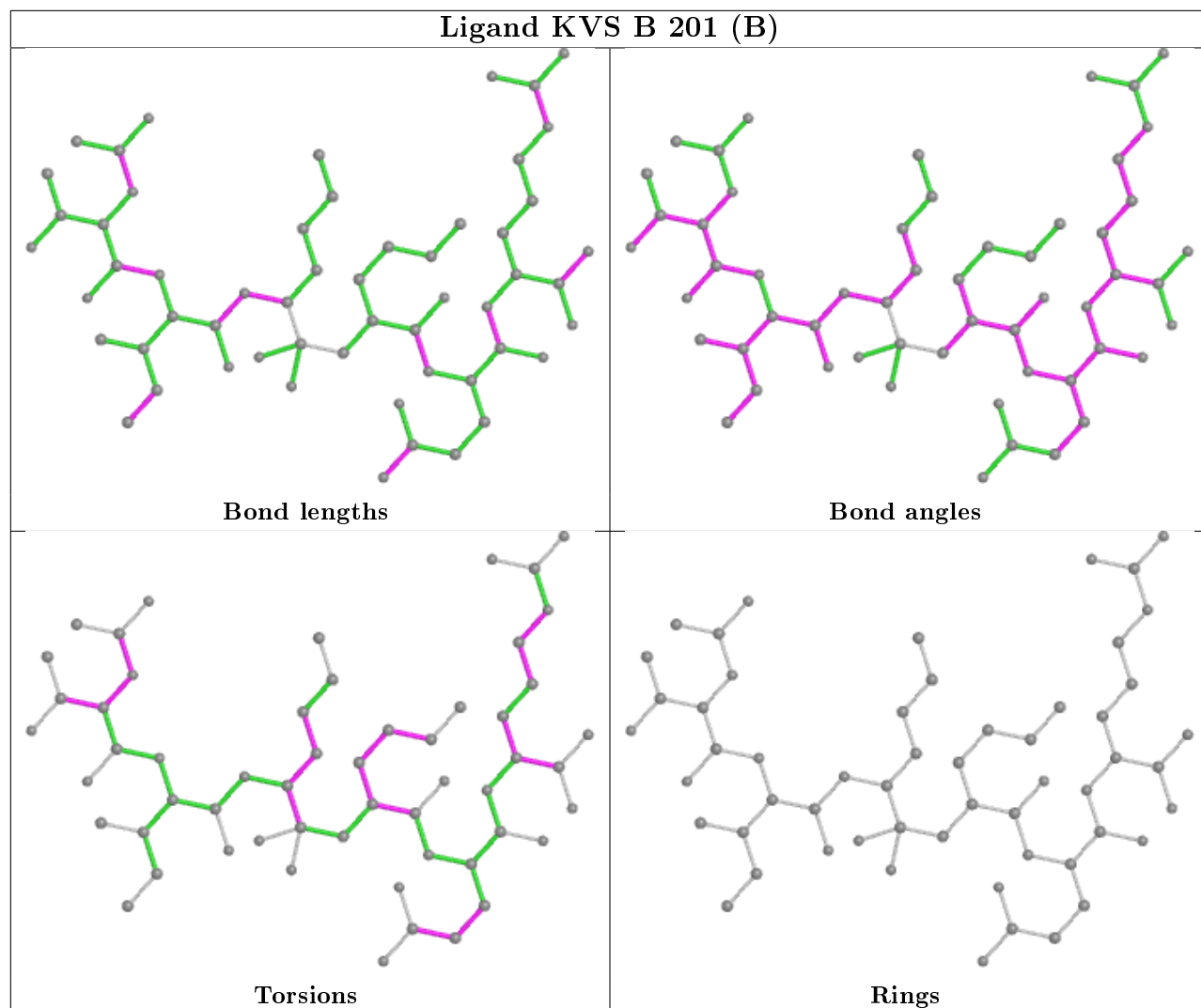
2 monomers are involved in 31 short contacts:

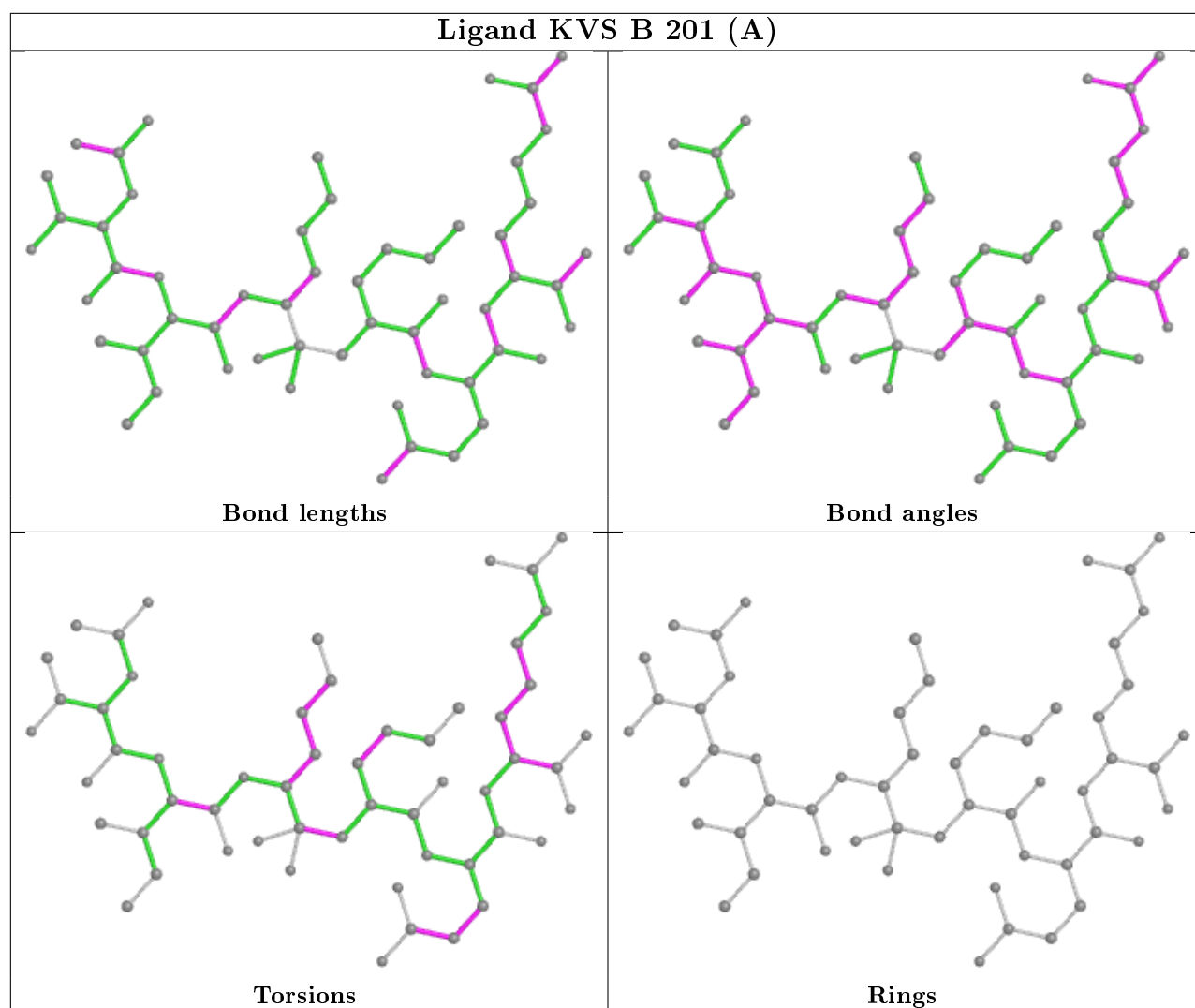
Mol	Chain	Res	Type	Clashes	Symm-Clashes
2	B	201[B]	KVS	22	0
2	B	201[A]	KVS	9	0

The following is a two-dimensional graphical depiction of Mogul quality analysis of bond lengths, bond angles, torsion angles, and ring geometry for all instances of the Ligand of Interest. In addition, ligands with molecular weight > 250 and outliers as shown on the validation Tables will also be included. For torsion angles, if less than 5% of the Mogul distribution of torsion angles is within 10 degrees of the torsion angle in question, then that torsion angle is considered an outlier. Any bond that is central to one or more torsion angles identified as an outlier by Mogul will be highlighted in the graph. For rings, the root-mean-square deviation (RMSD) between the ring in question and similar rings identified by Mogul is calculated over all ring torsion angles. If the average RMSD is greater than 60 degrees and the minimal RMSD between the ring in question and any Mogul-identified rings is also greater than 60 degrees, then that ring is considered an outlier. The outliers are highlighted in purple. The color gray indicates Mogul did not find sufficient equivalents in the CSD to analyse the geometry.



## Ligand KVS B 201 (B)





## 5.7 Other polymers [i](#)

There are no such residues in this entry.

## 5.8 Polymer linkage issues [i](#)

There are no chain breaks in this entry.

## 6 Fit of model and data [i](#)

### 6.1 Protein, DNA and RNA chains [i](#)

In the following table, the column labelled ‘#RSRZ> 2’ contains the number (and percentage) of RSRZ outliers, followed by percent RSRZ outliers for the chain as percentile scores relative to all X-ray entries and entries of similar resolution. The OWAB column contains the minimum, median, 95<sup>th</sup> percentile and maximum values of the occupancy-weighted average B-factor per residue. The column labelled ‘Q< 0.9’ lists the number of (and percentage) of residues with an average occupancy less than 0.9.

Mol	Chain	Analysed	<RSRZ>	#RSRZ>2	OWAB(Å <sup>2</sup> )	Q<0.9
1	A	99/99 (100%)	-0.23	0 100 100	8, 13, 22, 34	0
1	B	99/99 (100%)	-0.32	1 (1%) 82 82	8, 13, 25, 33	0
All	All	198/198 (100%)	-0.28	1 (0%) 91 91	8, 13, 25, 34	0

All (1) RSRZ outliers are listed below:

Mol	Chain	Res	Type	RSRZ
1	B	46[A]	MET	2.0

### 6.2 Non-standard residues in protein, DNA, RNA chains [i](#)

There are no non-standard protein/DNA/RNA residues in this entry.

### 6.3 Carbohydrates [i](#)

There are no monosaccharides in this entry.

### 6.4 Ligands [i](#)

In the following table, the Atoms column lists the number of modelled atoms in the group and the number defined in the chemical component dictionary. The B-factors column lists the minimum, median, 95<sup>th</sup> percentile and maximum values of B factors of atoms in the group. The column labelled ‘Q< 0.9’ lists the number of atoms with occupancy less than 0.9.

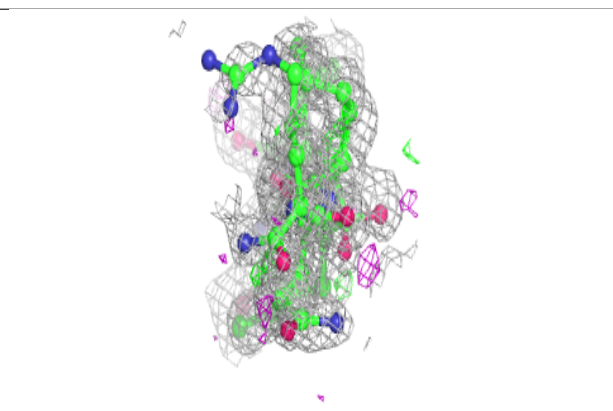
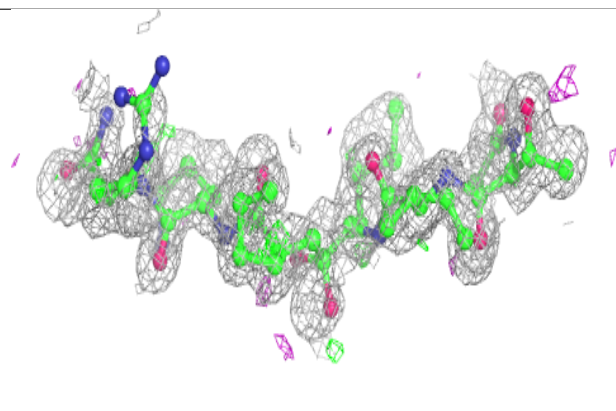
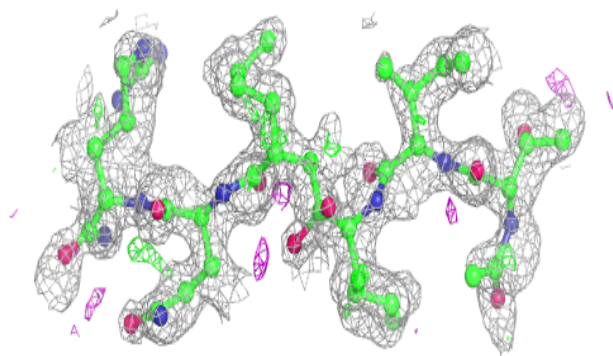
Mol	Type	Chain	Res	Atoms	RSCC	RSR	B-factors(Å <sup>2</sup> )	Q<0.9
2	KVS	B	201[B]	56/56	0.96	0.10	5,10,27,32	56
2	KVS	B	201[A]	56/56	0.96	0.10	8,11,24,40	56

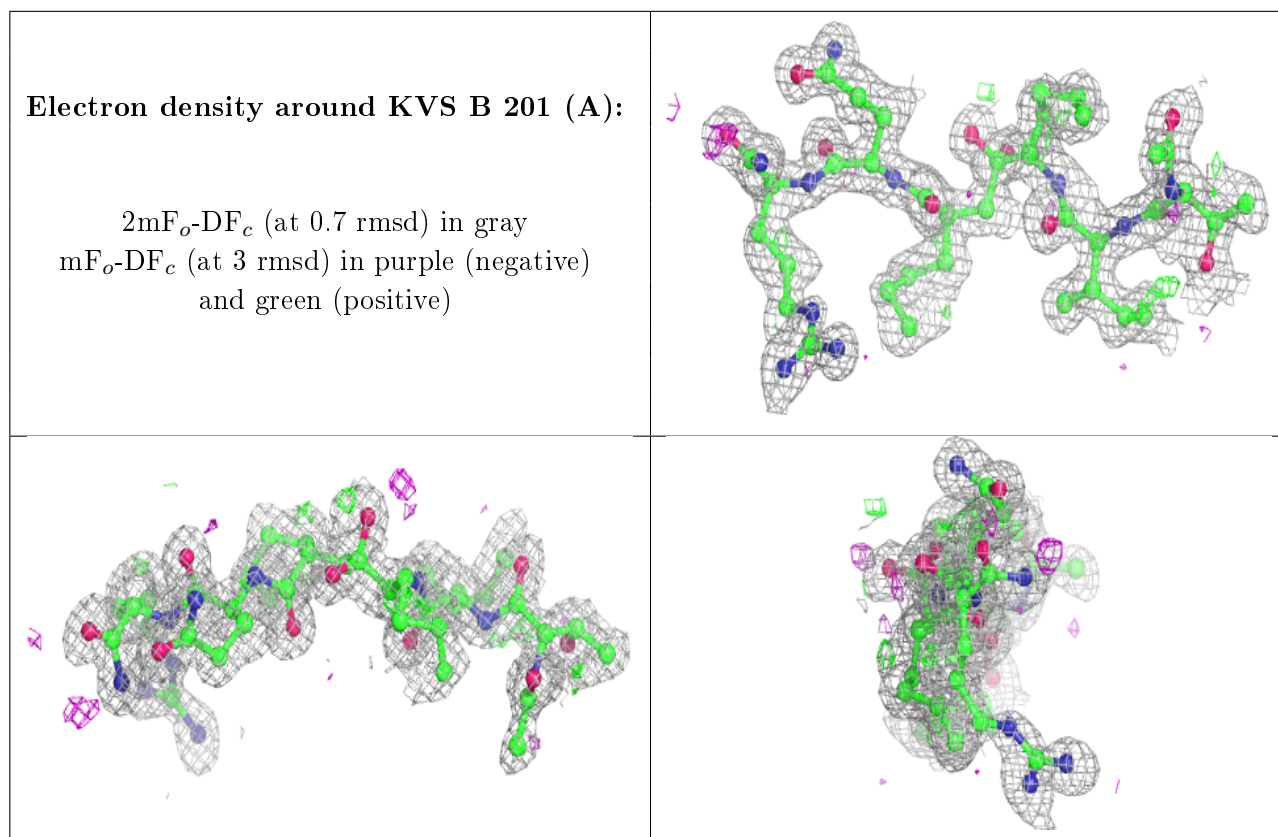
The following is a graphical depiction of the model fit to experimental electron density of all

instances of the Ligand of Interest. In addition, ligands with molecular weight > 250 and outliers as shown on the geometry validation Tables will also be included. Each fit is shown from different orientation to approximate a three-dimensional view.

**Electron density around KVS B 201 (B):**

$2mF_o-DF_c$  (at 0.7 rmsd) in gray  
 $mF_o-DF_c$  (at 3 rmsd) in purple (negative)  
and green (positive)





## 6.5 Other polymers [i](#)

There are no such residues in this entry.