



# Full wwPDB X-ray Structure Validation Report ⓘ

May 22, 2020 – 12:13 pm BST

PDB ID : 5KNS  
Title : E coli hypoxanthine guanine phosphoribosyltransferase in complexed with 9-[(N-phosphonoethyl-N-phosphonoethoxyethyl)-2-aminoethyl]hypoxanthine  
Authors : Eng, W.S.; Keough, D.T.; Hockova, D.; Janeba, Z.  
Deposited on : 2016-06-28  
Resolution : 2.79 Å(reported)

This is a Full wwPDB X-ray Structure Validation Report for a publicly released PDB entry.

We welcome your comments at [validation@mail.wwpdb.org](mailto:validation@mail.wwpdb.org)

A user guide is available at

<https://www.wwpdb.org/validation/2017/XrayValidationReportHelp>

with specific help available everywhere you see the ⓘ symbol.

---

The following versions of software and data (see [references ⓘ](#)) were used in the production of this report:

MolProbity : 4.02b-467  
Mogul : 1.8.5 (274361), CSD as541be (2020)  
Xtriage (Phenix) : 1.13  
EDS : 2.11  
buster-report : 1.1.7 (2018)  
Percentile statistics : 20191225.v01 (using entries in the PDB archive December 25th 2019)  
Refmac : 5.8.0158  
CCP4 : 7.0.044 (Gargrove)  
Ideal geometry (proteins) : Engh & Huber (2001)  
Ideal geometry (DNA, RNA) : Parkinson et al. (1996)  
Validation Pipeline (wwPDB-VP) : 2.11

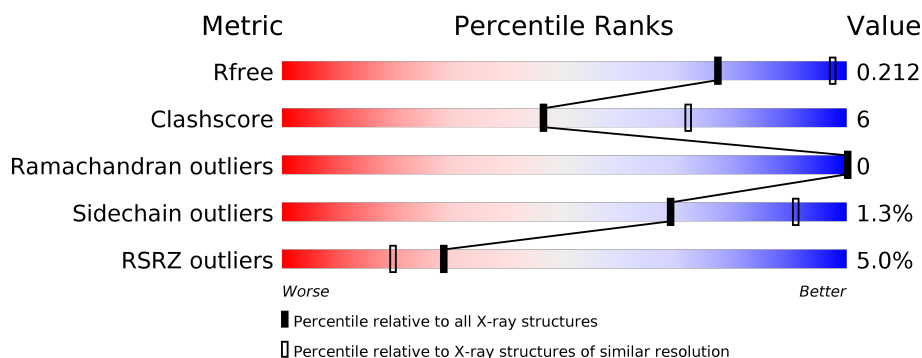
# 1 Overall quality at a glance ⓘ

The following experimental techniques were used to determine the structure:

*X-RAY DIFFRACTION*

The reported resolution of this entry is 2.79 Å.

Percentile scores (ranging between 0-100) for global validation metrics of the entry are shown in the following graphic. The table shows the number of entries on which the scores are based.



Metric	Whole archive (#Entries)	Similar resolution (#Entries, resolution range(Å))
$R_{free}$	130704	3140 (2.80-2.80)
Clashscore	141614	3569 (2.80-2.80)
Ramachandran outliers	138981	3498 (2.80-2.80)
Sidechain outliers	138945	3500 (2.80-2.80)
RSRZ outliers	127900	3078 (2.80-2.80)

The table below summarises the geometric issues observed across the polymeric chains and their fit to the electron density. The red, orange, yellow and green segments on the lower bar indicate the fraction of residues that contain outliers for  $\geq 3$ , 2, 1 and 0 types of geometric quality criteria respectively. A grey segment represents the fraction of residues that are not modelled. The numeric value for each fraction is indicated below the corresponding segment, with a dot representing fractions  $\leq 5\%$ . The upper red bar (where present) indicates the fraction of residues that have poor fit to the electron density. The numeric value is given above the bar.

Mol	Chain	Length	Quality of chain
1	A	182	<div> <div>5%</div> <div> <div></div> <div>79%</div> <div>14%</div> <div>7%</div> </div> </div>
1	B	182	<div> <div>4%</div> <div> <div></div> <div>80%</div> <div>14%</div> <div>5%</div> </div> </div>

The following table lists non-polymeric compounds, carbohydrate monomers and non-standard residues in protein, DNA, RNA chains that are outliers for geometric or electron-density-fit criteria:

Mol	Type	Chain	Res	Chirality	Geometry	Clashes	Electron density
4	EPE	A	203	-	-	-	X

## 2 Entry composition [i](#)

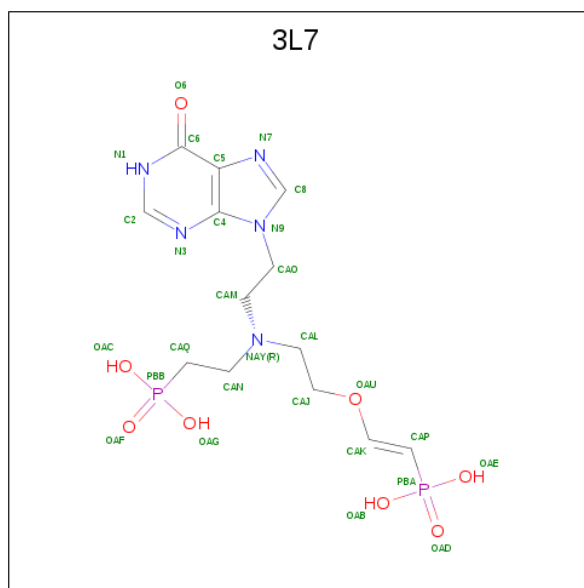
There are 5 unique types of molecules in this entry. The entry contains 3006 atoms, of which 0 are hydrogens and 0 are deuteriums.

In the tables below, the ZeroOcc column contains the number of atoms modelled with zero occupancy, the AltConf column contains the number of residues with at least one atom in alternate conformation and the Trace column contains the number of residues modelled with at most 2 atoms.

- Molecule 1 is a protein called Hypoxanthine-guanine phosphoribosyltransferase.

Mol	Chain	Residues	Atoms					ZeroOcc	AltConf	Trace
1	A	170	Total	C	N	O	S	11	3	0
			1377	871	238	260	8			
1	B	172	Total	C	N	O	S	0	2	0
			1371	869	235	260	7			

- Molecule 2 is (2-{{2-(6-oxo-1,6-dihydro-9H-purin-9-yl)ethyl}(2-{{[(E)-2-phosphonoethenyl]oxy}ethyl)amino}ethyl)phosphonic acid (three-letter code: 3L7) (formula: C<sub>13</sub>H<sub>21</sub>N<sub>5</sub>O<sub>8</sub>P<sub>2</sub>).

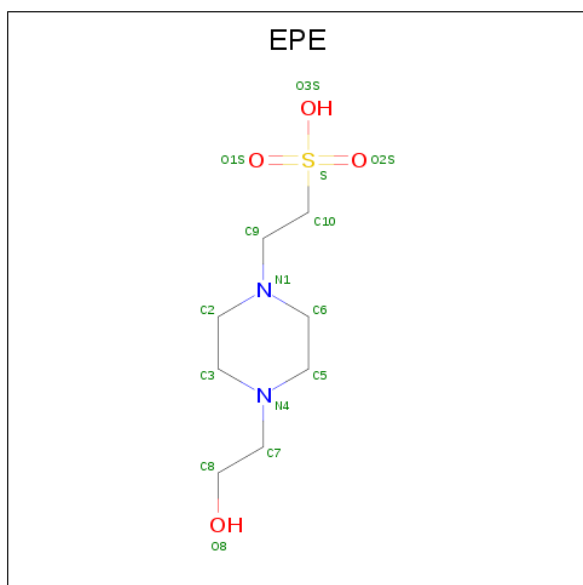


Mol	Chain	Residues	Atoms					ZeroOcc	AltConf
2	A	1	Total	C	N	O	P	0	0
			28	13	5	8	2		
2	B	1	Total	C	N	O	P	0	0
			28	13	5	8	2		

- Molecule 3 is MAGNESIUM ION (three-letter code: MG) (formula: Mg).

Mol	Chain	Residues	Atoms	ZeroOcc	AltConf
3	B	1	Total Mg 1 1	0	0
3	A	1	Total Mg 1 1	0	0

- Molecule 4 is 4-(2-HYDROXYETHYL)-1-PIPERAZINE ETHANESULFONIC ACID (three-letter code: EPE) (formula: C<sub>8</sub>H<sub>18</sub>N<sub>2</sub>O<sub>4</sub>S).



Mol	Chain	Residues	Atoms	ZeroOcc	AltConf
4	A	1	Total C N O S 15 8 2 4 1	0	0
4	B	1	Total C N O S 15 8 2 4 1	0	0

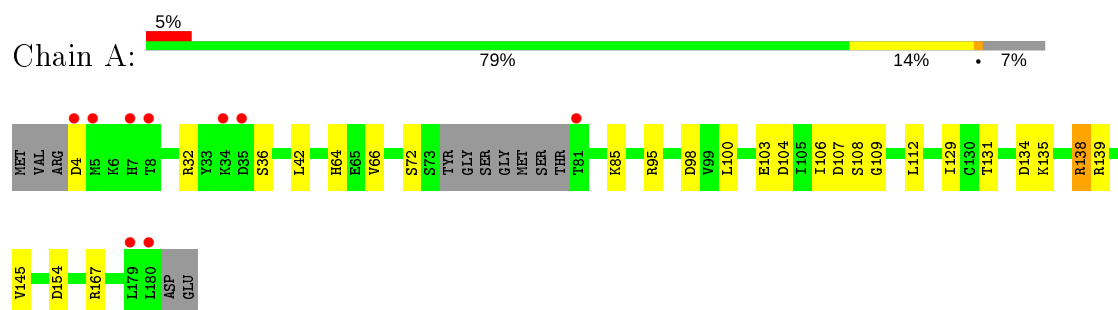
- Molecule 5 is water.

Mol	Chain	Residues	Atoms	ZeroOcc	AltConf
5	A	88	Total O 88 88	0	0
5	B	82	Total O 82 82	0	0

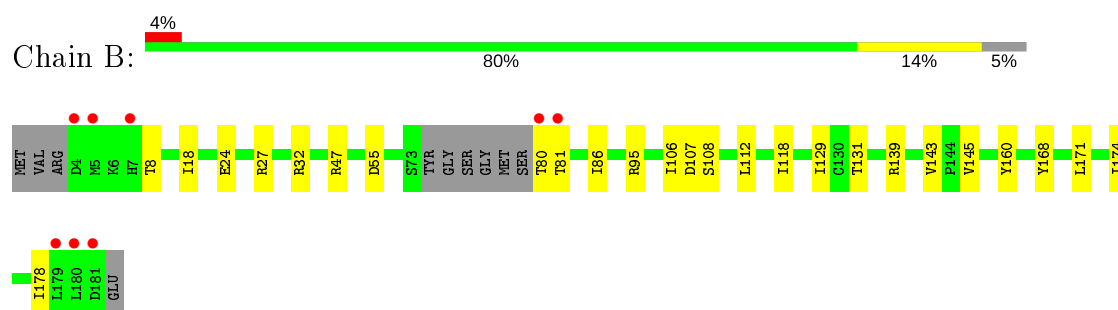
### 3 Residue-property plots [i](#)

These plots are drawn for all protein, RNA and DNA chains in the entry. The first graphic for a chain summarises the proportions of the various outlier classes displayed in the second graphic. The second graphic shows the sequence view annotated by issues in geometry and electron density. Residues are color-coded according to the number of geometric quality criteria for which they contain at least one outlier: green = 0, yellow = 1, orange = 2 and red = 3 or more. A red dot above a residue indicates a poor fit to the electron density ( $RSRZ > 2$ ). Stretches of 2 or more consecutive residues without any outlier are shown as a green connector. Residues present in the sample, but not in the model, are shown in grey.

- Molecule 1: Hypoxanthine-guanine phosphoribosyltransferase



- Molecule 1: Hypoxanthine-guanine phosphoribosyltransferase



## 4 Data and refinement statistics

Property	Value	Source
Space group	P 31 2 1	Depositor
Cell constants a, b, c, $\alpha$ , $\beta$ , $\gamma$	84.41Å 84.41Å 167.14Å 90.00° 90.00° 120.00°	Depositor
Resolution (Å)	44.31 – 2.79 44.31 – 2.79	Depositor EDS
% Data completeness (in resolution range)	99.9 (44.31-2.79) 96.0 (44.31-2.79)	Depositor EDS
$R_{merge}$	(Not available)	Depositor
$R_{sym}$	(Not available)	Depositor
$\langle I/\sigma(I) \rangle$ <sup>1</sup>	2.38 (at 2.81Å)	Xtriage
Refinement program	PHENIX 1.9_1692	Depositor
R, $R_{free}$	0.155 , 0.209 0.161 , 0.212	Depositor DCC
$R_{free}$ test set	1771 reflections (9.99%)	wwPDB-VP
Wilson B-factor (Å <sup>2</sup> )	53.1	Xtriage
Anisotropy	0.162	Xtriage
Bulk solvent $k_{sol}$ (e/Å <sup>3</sup> ), $B_{sol}$ (Å <sup>2</sup> )	0.34 , 63.8	EDS
L-test for twinning <sup>2</sup>	$\langle  L  \rangle = 0.49$ , $\langle L^2 \rangle = 0.32$	Xtriage
Estimated twinning fraction	0.038 for -h,-k,l	Xtriage
$F_o, F_c$ correlation	0.96	EDS
Total number of atoms	3006	wwPDB-VP
Average B, all atoms (Å <sup>2</sup> )	62.0	wwPDB-VP

Xtriage's analysis on translational NCS is as follows: *The largest off-origin peak in the Patterson function is 3.96% of the height of the origin peak. No significant pseudotranslation is detected.*

<sup>1</sup>Intensities estimated from amplitudes.

<sup>2</sup>Theoretical values of  $\langle |L| \rangle$ ,  $\langle L^2 \rangle$  for acentric reflections are 0.5, 0.333 respectively for untwinned datasets, and 0.375, 0.2 for perfectly twinned datasets.

## 5 Model quality

### 5.1 Standard geometry

Bond lengths and bond angles in the following residue types are not validated in this section: MG, EPE, 3L7

The Z score for a bond length (or angle) is the number of standard deviations the observed value is removed from the expected value. A bond length (or angle) with  $|Z| > 5$  is considered an outlier worth inspection. RMSZ is the root-mean-square of all Z scores of the bond lengths (or angles).

Mol	Chain	Bond lengths		Bond angles	
		RMSZ	# Z  >5	RMSZ	# Z  >5
1	A	0.21	0/1395	0.39	0/1877
1	B	0.21	0/1389	0.39	0/1872
All	All	0.21	0/2784	0.39	0/3749

There are no bond length outliers.

There are no bond angle outliers.

There are no chirality outliers.

There are no planarity outliers.

### 5.2 Too-close contacts

In the following table, the Non-H and H(model) columns list the number of non-hydrogen atoms and hydrogen atoms in the chain respectively. The H(added) column lists the number of hydrogen atoms added and optimized by MolProbity. The Clashes column lists the number of clashes within the asymmetric unit, whereas Symm-Clashes lists symmetry related clashes.

Mol	Chain	Non-H	H(model)	H(added)	Clashes	Symm-Clashes
1	A	1377	0	1399	21	0
1	B	1371	0	1388	16	0
2	A	28	0	19	3	0
2	B	28	0	19	2	0
3	A	1	0	0	0	0
3	B	1	0	0	0	0
4	A	15	0	17	1	0
4	B	15	0	17	0	0
5	A	88	0	0	1	0
5	B	82	0	0	2	0
All	All	3006	0	2859	36	0



The all-atom clashscore is defined as the number of clashes found per 1000 atoms (including hydrogen atoms). The all-atom clashscore for this structure is 6.

All (36) close contacts within the same asymmetric unit are listed below, sorted by their clash magnitude.

Atom-1	Atom-2	Interatomic distance (Å)	Clash overlap (Å)
1:A:138:ARG:NH2	1:A:154:ASP:OD2	2.14	0.79
1:A:72:SER:HB3	1:A:85:LYS:H	1.55	0.71
1:B:95:ARG:NH1	5:B:303:HOH:O	2.32	0.62
1:A:106:ILE:HD11	1:A:109:GLY:HA2	1.80	0.62
1:A:4:ASP:OD2	1:A:167[B]:ARG:NH2	2.38	0.56
1:A:108:SER:N	2:A:201:3L7:OAC	2.38	0.56
1:B:112:LEU:HD21	1:B:129:ILE:HG21	1.88	0.55
1:A:134:ASP:OD2	1:A:139:ARG:NH2	2.40	0.53
1:A:135:LYS:NZ	2:A:201:3L7:O6	2.38	0.53
1:A:42:LEU:HD22	1:A:100:LEU:HB3	1.91	0.52
1:A:95:ARG:NH1	5:A:304:HOH:O	2.39	0.52
1:B:18:ILE:HD11	1:B:174:ILE:HG12	1.91	0.52
1:A:32:ARG:NH2	4:A:203:EPE:O8	2.44	0.51
1:B:32[A]:ARG:NH2	5:B:304:HOH:O	2.43	0.51
1:A:106:ILE:HD13	1:A:112:LEU:HD23	1.94	0.50
1:B:108:SER:N	2:B:201:3L7:OAC	2.45	0.49
1:B:106:ILE:HD11	1:B:112:LEU:HD22	1.93	0.48
1:B:86:ILE:HD11	1:B:118:ILE:HG21	1.95	0.48
1:B:24:GLU:OE1	1:B:27:ARG:NH1	2.47	0.48
1:A:107:ASP:OD2	2:A:201:3L7:H22	2.14	0.48
1:A:112:LEU:HD21	1:A:129:ILE:HG21	1.96	0.47
1:B:55:ASP:OD2	1:B:160:TYR:OH	2.22	0.46
1:A:112:LEU:HG	1:A:129:ILE:HD13	1.98	0.45
1:B:8:THR:HG23	1:B:178:ILE:HB	1.98	0.45
1:A:106:ILE:HG22	1:A:131:THR:HG21	2.00	0.44
1:A:66:VAL:O	1:B:47:ARG:NH1	2.41	0.44
1:A:131:THR:HG22	1:A:145:VAL:HG11	2.00	0.43
1:B:131:THR:HG22	1:B:145:VAL:HG11	2.00	0.43
1:A:104:ASP:OD1	1:A:104:ASP:N	2.50	0.42
1:A:108:SER:HA	1:A:138:ARG:O	2.20	0.42
1:B:106:ILE:CD1	1:B:112:LEU:HD22	2.50	0.41
1:B:168:TYR:HB3	1:B:171:LEU:HD22	2.02	0.41
1:A:42:LEU:HG	1:A:64:HIS:CD2	2.55	0.41
1:B:80:THR:OG1	1:B:81:THR:N	2.54	0.41
1:A:36:SER:OG	1:A:98:ASP:OD2	2.28	0.41
1:B:107:ASP:HB2	2:B:201:3L7:H22	2.04	0.40

There are no symmetry-related clashes.

## 5.3 Torsion angles

### 5.3.1 Protein backbone

In the following table, the Percentiles column shows the percent Ramachandran outliers of the chain as a percentile score with respect to all X-ray entries followed by that with respect to entries of similar resolution.

The Analysed column shows the number of residues for which the backbone conformation was analysed, and the total number of residues.

Mol	Chain	Analysed	Favoured	Allowed	Outliers	Percentiles	
1	A	169/182 (93%)	165 (98%)	4 (2%)	0	100	100
1	B	170/182 (93%)	163 (96%)	7 (4%)	0	100	100
All	All	339/364 (93%)	328 (97%)	11 (3%)	0	100	100

There are no Ramachandran outliers to report.

### 5.3.2 Protein sidechains

In the following table, the Percentiles column shows the percent sidechain outliers of the chain as a percentile score with respect to all X-ray entries followed by that with respect to entries of similar resolution.

The Analysed column shows the number of residues for which the sidechain conformation was analysed, and the total number of residues.

Mol	Chain	Analysed	Rotameric	Outliers	Percentiles	
1	A	154/163 (94%)	152 (99%)	2 (1%)	69	91
1	B	152/163 (93%)	150 (99%)	2 (1%)	69	91
All	All	306/326 (94%)	302 (99%)	4 (1%)	69	91

All (4) residues with a non-rotameric sidechain are listed below:

Mol	Chain	Res	Type
1	A	103	GLU
1	A	138	ARG
1	B	139	ARG
1	B	143	VAL

Some sidechains can be flipped to improve hydrogen bonding and reduce clashes. There are no such sidechains identified.

### 5.3.3 RNA ⓘ

There are no RNA molecules in this entry.

## 5.4 Non-standard residues in protein, DNA, RNA chains ⓘ

There are no non-standard protein/DNA/RNA residues in this entry.

## 5.5 Carbohydrates ⓘ

There are no carbohydrates in this entry.

## 5.6 Ligand geometry ⓘ

Of 6 ligands modelled in this entry, 2 are monoatomic - leaving 4 for Mogul analysis.

In the following table, the Counts columns list the number of bonds (or angles) for which Mogul statistics could be retrieved, the number of bonds (or angles) that are observed in the model and the number of bonds (or angles) that are defined in the Chemical Component Dictionary. The Link column lists molecule types, if any, to which the group is linked. The Z score for a bond length (or angle) is the number of standard deviations the observed value is removed from the expected value. A bond length (or angle) with  $|Z| > 2$  is considered an outlier worth inspection. RMSZ is the root-mean-square of all Z scores of the bond lengths (or angles).

Mol	Type	Chain	Res	Link	Bond lengths			Bond angles		
					Counts	RMSZ	# Z  > 2	Counts	RMSZ	# Z  > 2
2	3L7	B	201	3	26,29,29	3.36	11 (42%)	22,41,41	1.89	4 (18%)
4	EPE	A	203	-	15,15,15	0.83	1 (6%)	18,20,20	1.90	7 (38%)
4	EPE	B	203	-	15,15,15	0.82	1 (6%)	18,20,20	1.95	6 (33%)
2	3L7	A	201	3	26,29,29	3.37	11 (42%)	22,41,41	1.92	4 (18%)

In the following table, the Chirals column lists the number of chiral outliers, the number of chiral centers analysed, the number of these observed in the model and the number defined in the Chemical Component Dictionary. Similar counts are reported in the Torsion and Rings columns. '-' means no outliers of that kind were identified.

Mol	Type	Chain	Res	Link	Chirals	Torsions	Rings
2	3L7	B	201	3	-	6/17/20/20	0/2/2/2
4	EPE	A	203	-	-	7/9/19/19	0/1/1/1
4	EPE	B	203	-	-	6/9/19/19	0/1/1/1
2	3L7	A	201	3	-	10/17/20/20	0/2/2/2

All (24) bond length outliers are listed below:

Mol	Chain	Res	Type	Atoms	Z	Observed(Å)	Ideal(Å)
2	A	201	3L7	CAP-CAK	12.06	1.51	1.32
2	B	201	3L7	CAP-CAK	11.94	1.50	1.32
2	B	201	3L7	PBB-CAQ	5.70	1.84	1.78
2	B	201	3L7	O6-C6	5.49	1.38	1.24
2	A	201	3L7	O6-C6	5.47	1.38	1.24
2	A	201	3L7	PBB-CAQ	5.46	1.84	1.78
2	A	201	3L7	C6-C5	-3.78	1.34	1.41
2	B	201	3L7	C6-C5	-3.73	1.34	1.41
2	A	201	3L7	PBA-CAP	3.42	1.81	1.76
2	B	201	3L7	PBA-CAP	3.38	1.81	1.76
2	B	201	3L7	C6-N1	3.35	1.38	1.33
2	A	201	3L7	C6-N1	3.32	1.38	1.33
2	A	201	3L7	CAO-N9	-3.09	1.42	1.49
2	B	201	3L7	CAO-N9	-3.06	1.42	1.49
4	A	203	EPE	C10-S	2.76	1.81	1.77
4	B	203	EPE	C10-S	2.68	1.81	1.77
2	B	201	3L7	PBA-OAE	-2.53	1.50	1.54
2	A	201	3L7	PBA-OAE	-2.48	1.50	1.54
2	B	201	3L7	C2-N3	2.30	1.35	1.32
2	A	201	3L7	C2-N3	2.26	1.35	1.32
2	B	201	3L7	C2-N1	2.16	1.37	1.33
2	A	201	3L7	C2-N1	2.14	1.37	1.33
2	B	201	3L7	PBA-OAB	-2.07	1.51	1.54
2	A	201	3L7	PBA-OAB	-2.03	1.51	1.54

All (21) bond angle outliers are listed below:

Mol	Chain	Res	Type	Atoms	Z	Observed(°)	Ideal(°)
2	A	201	3L7	N3-C2-N1	-6.85	117.98	128.68
2	B	201	3L7	N3-C2-N1	-6.82	118.03	128.68
4	B	203	EPE	C5-N4-C3	4.18	118.24	108.83
4	A	203	EPE	C5-N4-C3	4.00	117.83	108.83
4	B	203	EPE	C7-N4-C5	3.87	121.13	111.23
4	B	203	EPE	C7-N4-C3	3.56	120.34	111.23
2	B	201	3L7	C4-C5-N7	-3.08	106.18	109.40
2	A	201	3L7	C4-C5-N7	-3.07	106.20	109.40
4	A	203	EPE	C7-N4-C5	2.80	118.39	111.23
4	A	203	EPE	C7-N4-C3	2.79	118.38	111.23
2	A	201	3L7	C2-N1-C6	2.65	120.31	115.88
2	B	201	3L7	C2-N1-C6	2.59	120.21	115.88
4	B	203	EPE	O3S-S-C10	2.43	109.69	105.77
4	B	203	EPE	O2S-S-C10	2.38	109.78	106.92

*Continued on next page...*

*Continued from previous page...*

Mol	Chain	Res	Type	Atoms	Z	Observed(°)	Ideal(°)
4	A	203	EPE	C6-N1-C2	2.37	114.17	108.83
4	A	203	EPE	O2S-S-C10	2.27	109.64	106.92
4	A	203	EPE	O3S-S-C10	2.25	109.41	105.77
2	A	201	3L7	C6-C5-C4	-2.24	118.66	120.80
4	B	203	EPE	C6-N1-C2	2.22	113.82	108.83
4	A	203	EPE	C2-C3-N4	2.11	114.97	110.64
2	B	201	3L7	C6-C5-C4	-2.06	118.83	120.80

There are no chirality outliers.

All (29) torsion outliers are listed below:

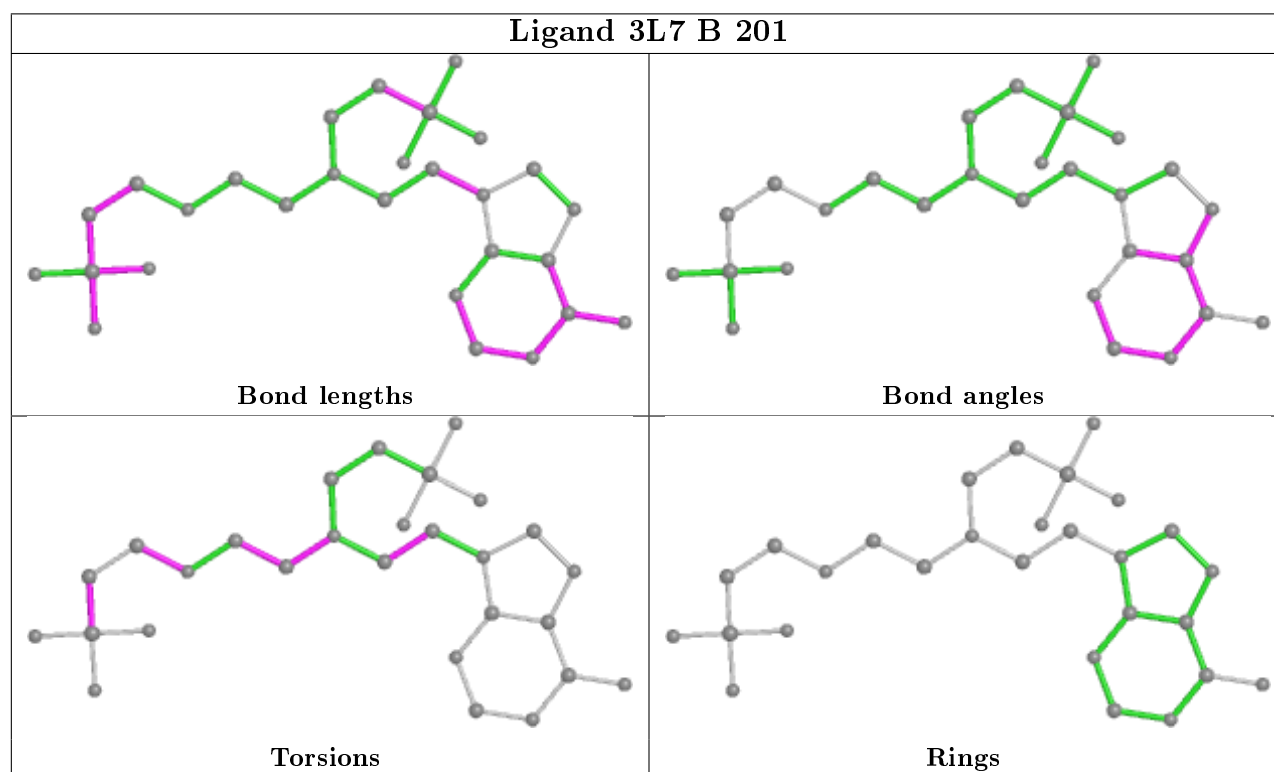
Mol	Chain	Res	Type	Atoms
4	A	203	EPE	C8-C7-N4-C5
4	A	203	EPE	C9-C10-S-O2S
2	A	201	3L7	CAK-CAP-PBA-OAD
2	A	201	3L7	CAQ-CAN-NAY-CAM
2	A	201	3L7	CAN-CAQ-PBB-OAF
2	A	201	3L7	CAN-CAQ-PBB-OAG
2	A	201	3L7	CAM-CAO-N9-C4
2	A	201	3L7	CAM-CAO-N9-C8
2	B	201	3L7	CAK-CAP-PBA-OAD
2	B	201	3L7	CAP-CAK-OAU-CAJ
2	B	201	3L7	CAJ-CAL-NAY-CAM
4	B	203	EPE	C8-C7-N4-C5
2	B	201	3L7	OAU-CAJ-CAL-NAY
2	A	201	3L7	CAN-CAQ-PBB-OAC
4	A	203	EPE	N4-C7-C8-O8
4	B	203	EPE	C9-C10-S-O3S
4	B	203	EPE	S-C10-C9-N1
4	A	203	EPE	C10-C9-N1-C2
4	A	203	EPE	C10-C9-N1-C6
2	A	201	3L7	CAL-CAJ-OAU-CAK
2	B	201	3L7	NAY-CAM-CAO-N9
4	A	203	EPE	C9-C10-S-O1S
4	B	203	EPE	C9-C10-S-O1S
4	B	203	EPE	C9-C10-S-O2S
4	A	203	EPE	C9-C10-S-O3S
2	A	201	3L7	CAJ-CAL-NAY-CAN
2	B	201	3L7	CAJ-CAL-NAY-CAN
2	A	201	3L7	CAP-CAK-OAU-CAJ
4	B	203	EPE	C10-C9-N1-C6

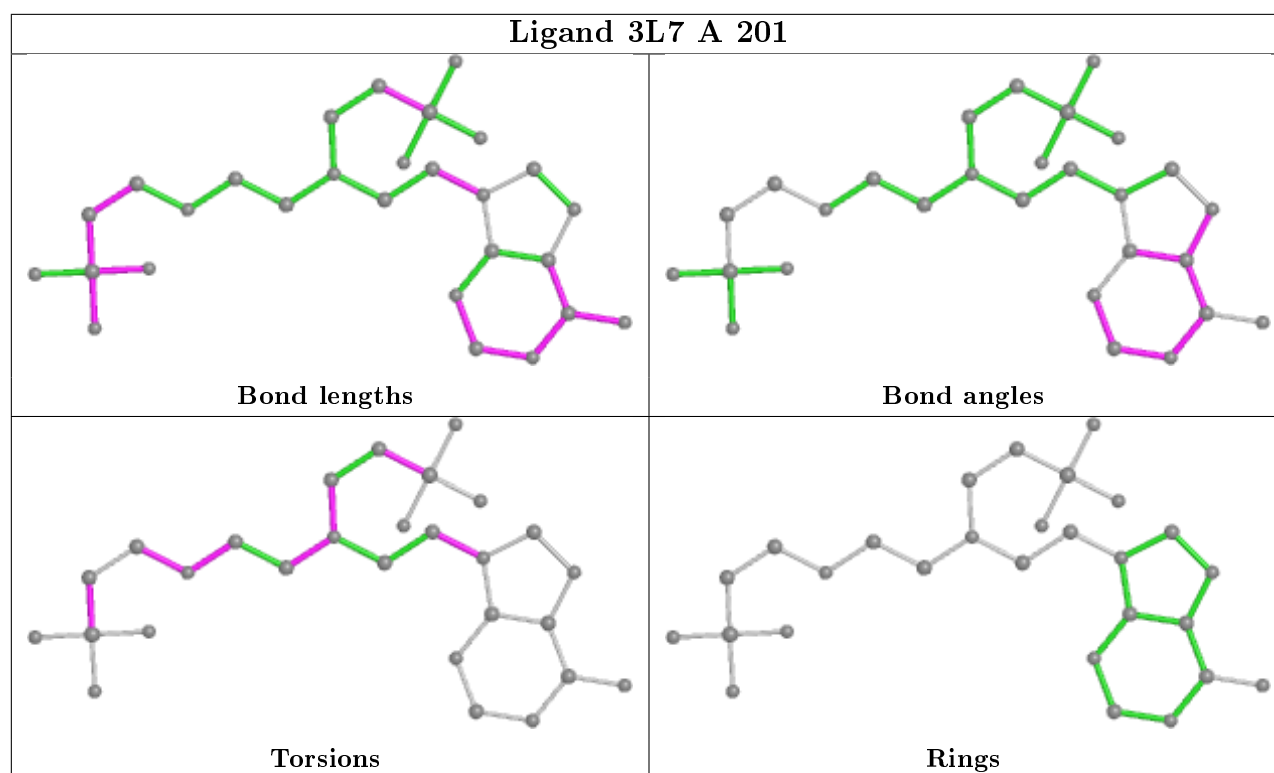
There are no ring outliers.

3 monomers are involved in 6 short contacts:

Mol	Chain	Res	Type	Clashes	Symm-Clashes
2	B	201	3L7	2	0
4	A	203	EPE	1	0
2	A	201	3L7	3	0

The following is a two-dimensional graphical depiction of Mogul quality analysis of bond lengths, bond angles, torsion angles, and ring geometry for all instances of the Ligand of Interest. In addition, ligands with molecular weight > 250 and outliers as shown on the validation Tables will also be included. For torsion angles, if less than 5% of the Mogul distribution of torsion angles is within 10 degrees of the torsion angle in question, then that torsion angle is considered an outlier. Any bond that is central to one or more torsion angles identified as an outlier by Mogul will be highlighted in the graph. For rings, the root-mean-square deviation (RMSD) between the ring in question and similar rings identified by Mogul is calculated over all ring torsion angles. If the average RMSD is greater than 60 degrees and the minimal RMSD between the ring in question and any Mogul-identified rings is also greater than 60 degrees, then that ring is considered an outlier. The outliers are highlighted in purple. The color gray indicates Mogul did not find sufficient equivalents in the CSD to analyse the geometry.





## 5.7 Other polymers [i](#)

There are no such residues in this entry.

## 5.8 Polymer linkage issues [i](#)

There are no chain breaks in this entry.

## 6 Fit of model and data [i](#)

### 6.1 Protein, DNA and RNA chains [i](#)

In the following table, the column labelled ‘#RSRZ> 2’ contains the number (and percentage) of RSRZ outliers, followed by percent RSRZ outliers for the chain as percentile scores relative to all X-ray entries and entries of similar resolution. The OWAB column contains the minimum, median, 95<sup>th</sup> percentile and maximum values of the occupancy-weighted average B-factor per residue. The column labelled ‘Q< 0.9’ lists the number of (and percentage) of residues with an average occupancy less than 0.9.

Mol	Chain	Analysed	<RSRZ>	#RSRZ>2			OWAB(Å <sup>2</sup> )	Q<0.9
1	A	170/182 (93%)	-0.21	9 (5%)	26	17	40, 54, 96, 142	0
1	B	172/182 (94%)	-0.21	8 (4%)	31	22	37, 55, 95, 141	0
All	All	342/364 (93%)	-0.21	17 (4%)	28	19	37, 55, 95, 142	0

All (17) RSRZ outliers are listed below:

Mol	Chain	Res	Type	RSRZ
1	A	4	ASP	5.3
1	B	81	THR	4.9
1	B	4	ASP	4.5
1	B	80	THR	4.4
1	B	180	LEU	4.0
1	B	5	MET	3.7
1	A	5	MET	3.1
1	B	181	ASP	3.0
1	B	179	LEU	2.8
1	A	180	LEU	2.6
1	A	179	LEU	2.6
1	A	8	THR	2.5
1	A	35	ASP	2.2
1	B	7	HIS	2.1
1	A	34	LYS	2.1
1	A	81	THR	2.1
1	A	7	HIS	2.1

### 6.2 Non-standard residues in protein, DNA, RNA chains [i](#)

There are no non-standard protein/DNA/RNA residues in this entry.



### 6.3 Carbohydrates

There are no carbohydrates in this entry.

### 6.4 Ligands

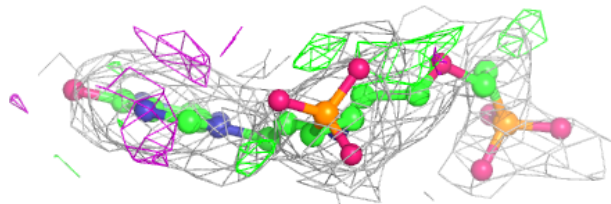
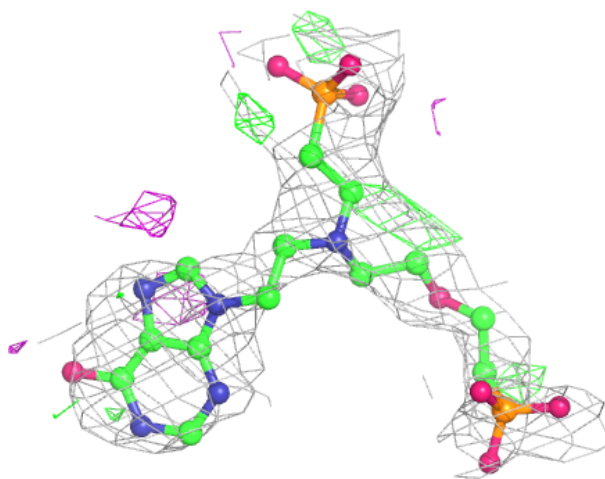
In the following table, the Atoms column lists the number of modelled atoms in the group and the number defined in the chemical component dictionary. The B-factors column lists the minimum, median, 95<sup>th</sup> percentile and maximum values of B factors of atoms in the group. The column labelled 'Q< 0.9' lists the number of atoms with occupancy less than 0.9.

Mol	Type	Chain	Res	Atoms	RSCC	RSR	B-factors( $\text{\AA}^2$ )	Q<0.9
4	EPE	A	203	15/15	0.76	0.56	106,125,189,189	0
3	MG	B	202	1/1	0.81	0.11	166,166,166,166	0
2	3L7	A	201	28/28	0.87	0.20	76,123,184,187	0
2	3L7	B	201	28/28	0.88	0.22	61,101,162,170	6
3	MG	A	202	1/1	0.91	0.16	198,198,198,198	0
4	EPE	B	203	15/15	0.96	0.25	70,92,107,109	0

The following is a graphical depiction of the model fit to experimental electron density of all instances of the Ligand of Interest. In addition, ligands with molecular weight > 250 and outliers as shown on the geometry validation Tables will also be included. Each fit is shown from different orientation to approximate a three-dimensional view.

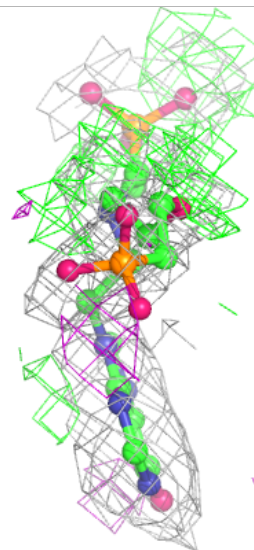
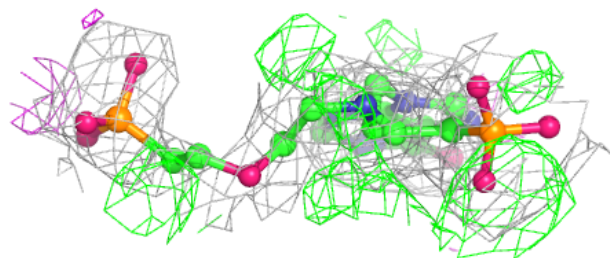
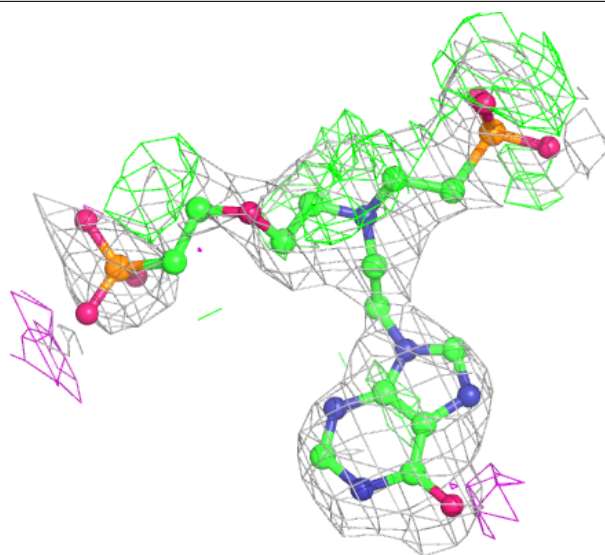
**Electron density around 3L7 A 201:**

$2mF_o-DF_c$  (at 0.7 rmsd) in gray  
 $mF_o-DF_c$  (at 3 rmsd) in purple (negative)  
and green (positive)



**Electron density around 3L7 B 201:**

$2mF_o-DF_c$  (at 0.7 rmsd) in gray  
 $mF_o-DF_c$  (at 3 rmsd) in purple (negative)  
and green (positive)



## 6.5 Other polymers [i](#)

There are no such residues in this entry.