



Full wwPDB X-ray Structure Validation Report ⓘ

May 25, 2020 – 06:59 am BST

PDB ID : 4KO0
Title : CRYSTAL STRUCTURE OF HIV-1 REVERSE TRANSCRIPTASE (RT) IN
COMPLEX WITH an anilinympyrimidine derivative (JLJ-135)
Authors : Das, K.; Bauman, J.D.; Arnold, E.
Deposited on : 2013-05-10
Resolution : 1.95 Å(reported)

This is a Full wwPDB X-ray Structure Validation Report for a publicly released PDB entry.

We welcome your comments at validation@mail.wwpdb.org

A user guide is available at

<https://www.wwpdb.org/validation/2017/XrayValidationReportHelp>

with specific help available everywhere you see the ⓘ symbol.

The following versions of software and data (see [references ⓘ](#)) were used in the production of this report:

MolProbity : 4.02b-467
Mogul : 1.8.5 (274361), CSD as541be (2020)
Xtriage (Phenix) : 1.13
EDS : 2.11
buster-report : 1.1.7 (2018)
Percentile statistics : 20191225.v01 (using entries in the PDB archive December 25th 2019)
Refmac : 5.8.0158
CCP4 : 7.0.044 (Gargrove)
Ideal geometry (proteins) : Engh & Huber (2001)
Ideal geometry (DNA, RNA) : Parkinson et al. (1996)
Validation Pipeline (wwPDB-VP) : 2.11

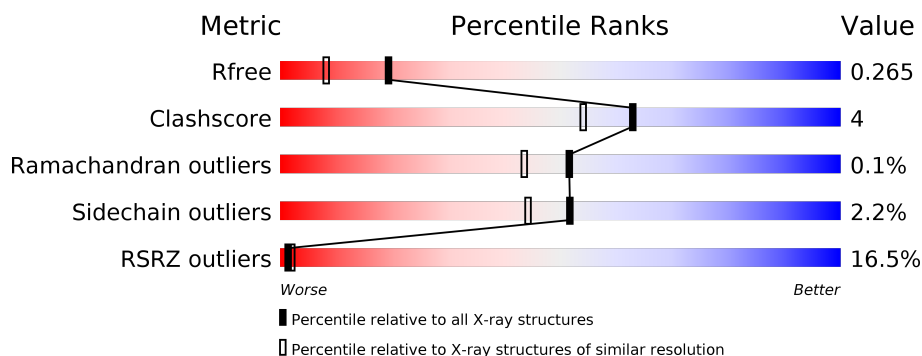
1 Overall quality at a glance

The following experimental techniques were used to determine the structure:

X-RAY DIFFRACTION

The reported resolution of this entry is 1.95 Å.

Percentile scores (ranging between 0-100) for global validation metrics of the entry are shown in the following graphic. The table shows the number of entries on which the scores are based.



Metric	Whole archive (#Entries)	Similar resolution (#Entries, resolution range(Å))
R_{free}	130704	2580 (1.96-1.96)
Clashscore	141614	2705 (1.96-1.96)
Ramachandran outliers	138981	2678 (1.96-1.96)
Sidechain outliers	138945	2678 (1.96-1.96)
RSRZ outliers	127900	2539 (1.96-1.96)

The table below summarises the geometric issues observed across the polymeric chains and their fit to the electron density. The red, orange, yellow and green segments on the lower bar indicate the fraction of residues that contain outliers for ≥ 3 , 2, 1 and 0 types of geometric quality criteria respectively. A grey segment represents the fraction of residues that are not modelled. The numeric value for each fraction is indicated below the corresponding segment, with a dot representing fractions $\leq 5\%$. The upper red bar (where present) indicates the fraction of residues that have poor fit to the electron density. The numeric value is given above the bar.

Mol	Chain	Length	Quality of chain
1	A	557	<div> <div>16%</div> <div> <div></div> <div>89%</div> <div>10%</div> <div>.</div> </div> </div>
2	B	428	<div> <div>17%</div> <div> <div></div> <div>86%</div> <div>9%</div> <div>..</div> </div> </div>

2 Entry composition

There are 6 unique types of molecules in this entry. The entry contains 8309 atoms, of which 0 are hydrogens and 0 are deuteriums.

In the tables below, the ZeroOcc column contains the number of atoms modelled with zero occupancy, the AltConf column contains the number of residues with at least one atom in alternate conformation and the Trace column contains the number of residues modelled with at most 2 atoms.

- Molecule 1 is a protein called HIV-1 reverse transcriptase, p66 subunit.

Mol	Chain	Residues	Atoms					ZeroOcc	AltConf	Trace
1	A	556	Total	C	N	O	S	0	2	0
			4521	2926	751	836	8			

There are 5 discrepancies between the modelled and reference sequences:

Chain	Residue	Modelled	Actual	Comment	Reference
A	-1	MET	-	EXPRESSION TAG	UNP P03366
A	0	VAL	-	EXPRESSION TAG	UNP P03366
A	172	ALA	LYS	ENGINEERED MUTATION	UNP P03366
A	173	ALA	LYS	ENGINEERED MUTATION	UNP P03366
A	280	SER	CYS	ENGINEERED MUTATION	UNP P03366

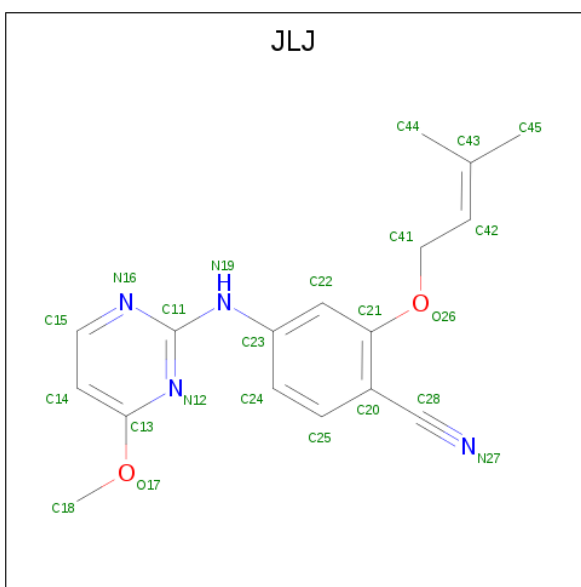
- Molecule 2 is a protein called HIV-1 reverse transcriptase, p51 subunit.

Mol	Chain	Residues	Atoms					ZeroOcc	AltConf	Trace
2	B	410	Total	C	N	O	S	0	2	0
			3409	2221	564	617	7			

There is a discrepancy between the modelled and reference sequences:

Chain	Residue	Modelled	Actual	Comment	Reference
B	280	SER	CYS	ENGINEERED MUTATION	UNP P03366

- Molecule 3 is 4-[(4-methoxypyrimidin-2-yl)amino]-2-[(3-methylbut-2-en-1-yl)oxy]benzonitrile (three-letter code: JLJ) (formula: C₁₇H₁₈N₄O₂).



Mol	Chain	Residues	Atoms				ZeroOcc	AltConf
3	A	1	Total	C	N	O	0	0
			23	17	4	2		

- Molecule 4 is SULFATE ION (three-letter code: SO4) (formula: O₄S).



Mol	Chain	Residues	Atoms			ZeroOcc	AltConf
4	A	1	Total	O	S	0	0
			5	4	1		
4	A	1	Total	O	S	0	0
			5	4	1		

- Molecule 5 is 1,2-ETHANEDIOL (three-letter code: EDO) (formula: C₂H₆O₂).



Mol	Chain	Residues	Atoms			ZeroOcc	AltConf
5	A	1	Total	C	O	0	0
			4	2	2		
5	B	1	Total	C	O	0	0
			4	2	2		

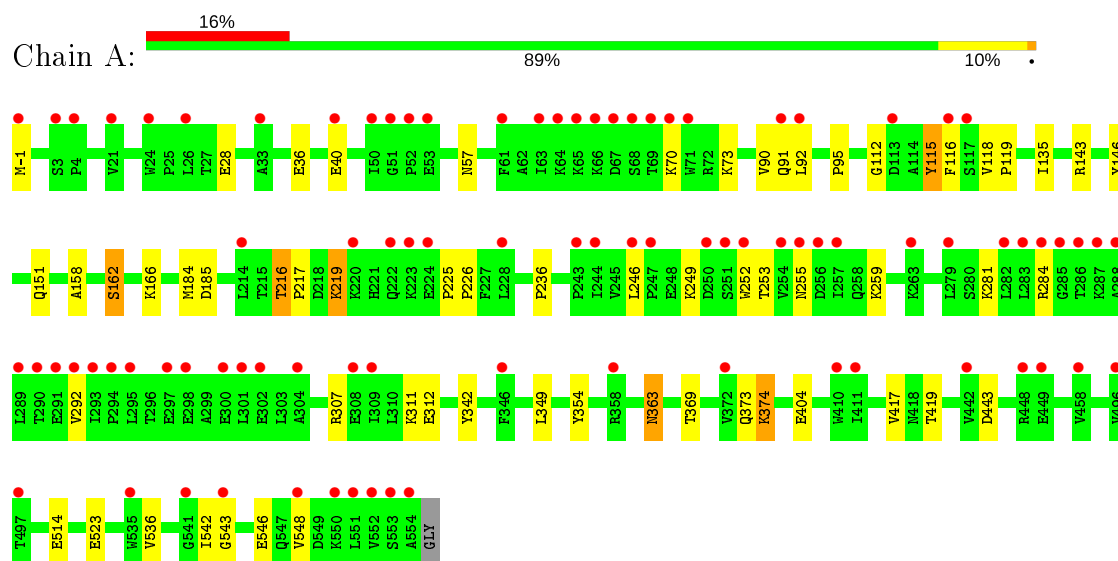
- Molecule 6 is water.

Mol	Chain	Residues	Atoms		ZeroOcc	AltConf
6	A	190	Total	O	0	0
			190	190		
6	B	148	Total	O	0	0
			148	148		

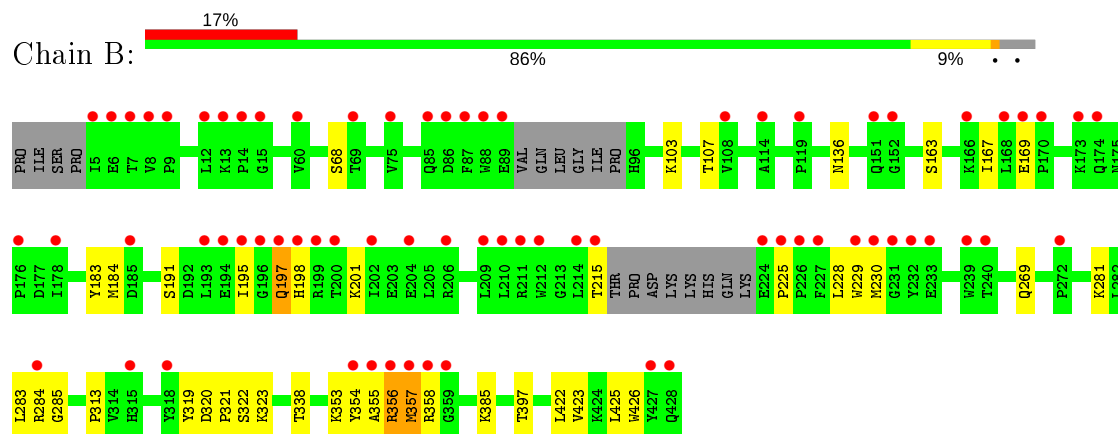
3 Residue-property plots [i](#)

These plots are drawn for all protein, RNA and DNA chains in the entry. The first graphic for a chain summarises the proportions of the various outlier classes displayed in the second graphic. The second graphic shows the sequence view annotated by issues in geometry and electron density. Residues are color-coded according to the number of geometric quality criteria for which they contain at least one outlier: green = 0, yellow = 1, orange = 2 and red = 3 or more. A red dot above a residue indicates a poor fit to the electron density ($RSRZ > 2$). Stretches of 2 or more consecutive residues without any outlier are shown as a green connector. Residues present in the sample, but not in the model, are shown in grey.

- Molecule 1: HIV-1 reverse transcriptase, p66 subunit



- Molecule 2: HIV-1 reverse transcriptase, p51 subunit



4 Data and refinement statistics

Property	Value	Source
Space group	C 1 2 1	Depositor
Cell constants a, b, c, α , β , γ	162.21Å 73.95Å 109.20Å 90.00° 100.23° 90.00°	Depositor
Resolution (Å)	29.31 – 1.95 29.46 – 1.95	Depositor EDS
% Data completeness (in resolution range)	98.8 (29.31-1.95) 98.7 (29.46-1.95)	Depositor EDS
R_{merge}	0.06	Depositor
R_{sym}	(Not available)	Depositor
$\langle I/\sigma(I) \rangle$ ¹	1.48 (at 1.95Å)	Xtriage
Refinement program	PHENIX (phenix.refine: 1.7.3_928)	Depositor
R, R_{free}	0.237 , 0.275 0.231 , 0.265	Depositor DCC
R_{free} test set	1863 reflections (2.03%)	wwPDB-VP
Wilson B-factor (Å ²)	40.1	Xtriage
Anisotropy	0.145	Xtriage
Bulk solvent k_{sol} (e/Å ³), B_{sol} (Å ²)	0.37 , 55.5	EDS
L-test for twinning ²	$\langle L \rangle = 0.49$, $\langle L^2 \rangle = 0.33$	Xtriage
Estimated twinning fraction	No twinning to report.	Xtriage
F_o, F_c correlation	0.94	EDS
Total number of atoms	8309	wwPDB-VP
Average B, all atoms (Å ²)	56.0	wwPDB-VP

Xtriage's analysis on translational NCS is as follows: *The largest off-origin peak in the Patterson function is 4.67% of the height of the origin peak. No significant pseudotranslation is detected.*

¹Intensities estimated from amplitudes.

²Theoretical values of $\langle |L| \rangle$, $\langle L^2 \rangle$ for acentric reflections are 0.5, 0.333 respectively for untwinned datasets, and 0.375, 0.2 for perfectly twinned datasets.

5 Model quality

5.1 Standard geometry

Bond lengths and bond angles in the following residue types are not validated in this section: EDO, SO4, JLJ

The Z score for a bond length (or angle) is the number of standard deviations the observed value is removed from the expected value. A bond length (or angle) with $|Z| > 5$ is considered an outlier worth inspection. RMSZ is the root-mean-square of all Z scores of the bond lengths (or angles).

Mol	Chain	Bond lengths		Bond angles	
		RMSZ	# Z >5	RMSZ	# Z >5
1	A	0.45	0/4643	0.55	0/6311
2	B	0.40	0/3511	0.55	0/4768
All	All	0.43	0/8154	0.55	0/11079

There are no bond length outliers.

There are no bond angle outliers.

There are no chirality outliers.

There are no planarity outliers.

5.2 Too-close contacts

In the following table, the Non-H and H(model) columns list the number of non-hydrogen atoms and hydrogen atoms in the chain respectively. The H(added) column lists the number of hydrogen atoms added and optimized by MolProbity. The Clashes column lists the number of clashes within the asymmetric unit, whereas Symm-Clashes lists symmetry related clashes.

Mol	Chain	Non-H	H(model)	H(added)	Clashes	Symm-Clashes
1	A	4521	0	4576	40	0
2	B	3409	0	3427	35	0
3	A	23	0	18	2	0
4	A	10	0	0	0	0
5	A	4	0	6	0	0
5	B	4	0	6	0	0
6	A	190	0	0	3	0
6	B	148	0	0	2	0
All	All	8309	0	8033	69	0

The all-atom clashscore is defined as the number of clashes found per 1000 atoms (including hydrogen atoms). The all-atom clashscore for this structure is 4.

All (69) close contacts within the same asymmetric unit are listed below, sorted by their clash magnitude.

Atom-1	Atom-2	Interatomic distance (Å)	Clash overlap (Å)
2:B:356:ARG:H	2:B:356:ARG:HD2	1.17	1.08
1:A:543:GLY:HA3	2:B:285:GLY:H	1.43	0.82
2:B:356:ARG:N	2:B:356:ARG:HD2	1.98	0.79
2:B:355:ALA:H	2:B:356:ARG:HD2	1.51	0.76
2:B:320:ASP:HB3	2:B:323:LYS:HE2	1.76	0.68
1:A:253:THR:HG22	1:A:292:VAL:HG22	1.76	0.67
2:B:356:ARG:CD	2:B:356:ARG:H	1.98	0.67
2:B:323:LYS:O	2:B:385:LYS:NZ	2.29	0.66
1:A:404:GLU:HG3	6:A:849:HOH:O	1.96	0.65
1:A:373[A]:GLN:NE2	2:B:397:THR:OG1	2.28	0.65
1:A:73:LYS:NZ	1:A:146:TYR:OH	2.30	0.64
1:A:417:VAL:HG22	1:A:419:THR:HG23	1.81	0.62
1:A:28:GLU:HG3	1:A:135:ILE:HD12	1.82	0.59
1:A:216:THR:OG1	1:A:217:PRO:HD2	2.03	0.59
1:A:543:GLY:HA2	1:A:546:GLU:HB3	1.86	0.58
1:A:543:GLY:HA3	2:B:285:GLY:N	2.18	0.57
1:A:354:TYR:HD1	1:A:374:LYS:HE2	1.70	0.56
1:A:116:PHE:HE1	1:A:151:GLN:HE21	1.54	0.55
1:A:36:GLU:O	1:A:40:GLU:HG2	2.09	0.53
1:A:543:GLY:N	2:B:283:LEU:O	2.42	0.52
2:B:319:TYR:OH	2:B:385:LYS:HE2	2.11	0.50
2:B:358:ARG:HG2	2:B:358:ARG:O	2.11	0.50
1:A:281:LYS:HE3	1:A:284:ARG:NH2	2.27	0.50
1:A:57:ASN:OD1	1:A:143:ARG:NH1	2.44	0.49
2:B:313:PRO:O	6:B:696:HOH:O	2.20	0.49
2:B:163:SER:O	2:B:167:ILE:HG13	2.13	0.49
1:A:523:GLU:OE1	6:A:868:HOH:O	2.20	0.48
2:B:191:SER:HG	2:B:198:HIS:CE1	2.27	0.48
2:B:225:PRO:HG3	2:B:228:LEU:HD23	1.97	0.47
1:A:249:LYS:HB2	1:A:252:TRP:CE2	2.49	0.47
3:A:601:JLJ:N12	3:A:601:JLJ:H7	2.30	0.46
1:A:184:MET:O	6:A:873:HOH:O	2.20	0.46
2:B:354:TYR:HA	2:B:356:ARG:HH11	1.81	0.46
1:A:246:LEU:HD12	1:A:307:ARG:HG2	1.97	0.46
2:B:356:ARG:O	2:B:357:MET:HE3	2.16	0.45
1:A:90:VAL:O	1:A:92:LEU:N	2.49	0.45
2:B:423:VAL:HA	2:B:426:TRP:CD1	2.51	0.45
1:A:255:ASN:O	1:A:259:LYS:HG3	2.17	0.45
1:A:342:TYR:HA	1:A:349:LEU:HD13	1.97	0.45
1:A:543:GLY:HA3	2:B:284:ARG:HA	1.99	0.45

Continued on next page...

Continued from previous page...

Atom-1	Atom-2	Interatomic distance (Å)	Clash overlap (Å)
2:B:269:GLN:NE2	6:B:675:HOH:O	2.24	0.45
1:A:219:LYS:HB3	1:A:219:LYS:HE3	1.52	0.44
1:A:443:ASP:HB2	1:A:548:VAL:HG13	2.00	0.44
2:B:358:ARG:CG	2:B:358:ARG:O	2.65	0.44
2:B:195:ILE:HA	2:B:198:HIS:HB3	1.99	0.44
1:A:118:VAL:HA	1:A:119:PRO:HD3	1.83	0.44
2:B:107:THR:OG1	2:B:198:HIS:NE2	2.42	0.44
1:A:225:PRO:HA	1:A:226:PRO:C	2.38	0.43
1:A:363:ASN:OD1	1:A:363:ASN:C	2.56	0.43
1:A:95:PRO:HA	2:B:136:ASN:O	2.17	0.43
2:B:68:SER:HB2	2:B:230:MET:HE1	2.01	0.43
1:A:216:THR:OG1	1:A:217:PRO:CD	2.65	0.43
1:A:369:THR:O	1:A:373[B]:GLN:HG2	2.18	0.43
1:A:536:VAL:HB	1:A:542:ILE:HD13	2.00	0.43
1:A:253:THR:HA	1:A:292:VAL:HA	2.00	0.43
2:B:338:THR:HG22	2:B:353:LYS:HG3	2.01	0.43
1:A:236:PRO:HA	3:A:601:JLJ:H9	2.00	0.42
2:B:320:ASP:HA	2:B:321:PRO:HD2	1.85	0.42
1:A:70:LYS:HB2	1:A:70:LYS:HE3	1.94	0.41
2:B:197:GLN:O	2:B:201:LYS:HG2	2.21	0.41
2:B:103:LYS:HA	2:B:103:LYS:HD3	1.88	0.41
1:A:542:ILE:HG12	2:B:283:LEU:HD12	2.01	0.41
1:A:158:ALA:O	1:A:162:SER:OG	2.34	0.41
1:A:112:GLY:O	1:A:115:TYR:HB2	2.21	0.41
2:B:183:TYR:CE2	2:B:184:MET:HG2	2.56	0.41
2:B:357:MET:HE2	2:B:357:MET:HA	2.02	0.41
1:A:311:LYS:HG3	1:A:312:GLU:N	2.36	0.40
2:B:229:TRP:CH2	2:B:230:MET:HE3	2.55	0.40
2:B:355:ALA:N	2:B:356:ARG:HD2	2.25	0.40

There are no symmetry-related clashes.

5.3 Torsion angles ⓘ

5.3.1 Protein backbone ⓘ

In the following table, the Percentiles column shows the percent Ramachandran outliers of the chain as a percentile score with respect to all X-ray entries followed by that with respect to entries of similar resolution.

The Analysed column shows the number of residues for which the backbone conformation was analysed, and the total number of residues.

Mol	Chain	Analysed	Favoured	Allowed	Outliers	Percentiles	
1	A	555/557 (100%)	543 (98%)	11 (2%)	1 (0%)	47	38
2	B	406/428 (95%)	391 (96%)	15 (4%)	0	100	100
All	All	961/985 (98%)	934 (97%)	26 (3%)	1 (0%)	51	43

All (1) Ramachandran outliers are listed below:

Mol	Chain	Res	Type
1	A	91	GLN

5.3.2 Protein sidechains ⓘ

In the following table, the Percentiles column shows the percent sidechain outliers of the chain as a percentile score with respect to all X-ray entries followed by that with respect to entries of similar resolution.

The Analysed column shows the number of residues for which the sidechain conformation was analysed, and the total number of residues.

Mol	Chain	Analysed	Rotameric	Outliers	Percentiles	
1	A	496/495 (100%)	486 (98%)	10 (2%)	55	48
2	B	374/390 (96%)	365 (98%)	9 (2%)	49	40
All	All	870/885 (98%)	851 (98%)	19 (2%)	52	44

All (19) residues with a non-rotameric sidechain are listed below:

Mol	Chain	Res	Type
1	A	-1	MET
1	A	115	TYR
1	A	162	SER
1	A	166	LYS
1	A	185	ASP
1	A	216	THR
1	A	219	LYS
1	A	363	ASN
1	A	374	LYS
1	A	514	GLU
2	B	169	GLU
2	B	197	GLN
2	B	215	THR
2	B	281	LYS
2	B	322	SER

Continued on next page...

Continued from previous page...

Mol	Chain	Res	Type
2	B	356	ARG
2	B	357	MET
2	B	422	LEU
2	B	425	LEU

Some sidechains can be flipped to improve hydrogen bonding and reduce clashes. All (4) such sidechains are listed below:

Mol	Chain	Res	Type
1	A	151	GLN
1	A	161	GLN
1	A	182	GLN
2	B	161	GLN

5.3.3 RNA [i](#)

There are no RNA molecules in this entry.

5.4 Non-standard residues in protein, DNA, RNA chains [i](#)

There are no non-standard protein/DNA/RNA residues in this entry.

5.5 Carbohydrates [i](#)

There are no carbohydrates in this entry.

5.6 Ligand geometry [i](#)

5 ligands are modelled in this entry.

In the following table, the Counts columns list the number of bonds (or angles) for which Mogul statistics could be retrieved, the number of bonds (or angles) that are observed in the model and the number of bonds (or angles) that are defined in the Chemical Component Dictionary. The Link column lists molecule types, if any, to which the group is linked. The Z score for a bond length (or angle) is the number of standard deviations the observed value is removed from the expected value. A bond length (or angle) with $|Z| > 2$ is considered an outlier worth inspection. RMSZ is the root-mean-square of all Z scores of the bond lengths (or angles).

Mol	Type	Chain	Res	Link	Bond lengths			Bond angles		
					Counts	RMSZ	$\# Z > 2$	Counts	RMSZ	$\# Z > 2$
4	SO4	A	603	-	4,4,4	0.15	0	6,6,6	0.27	0

Mol	Type	Chain	Res	Link	Bond lengths			Bond angles		
					Counts	RMSZ	# Z > 2	Counts	RMSZ	# Z > 2
5	EDO	B	501	-	3,3,3	0.21	0	2,2,2	0.54	0
5	EDO	A	604	-	3,3,3	0.44	0	2,2,2	0.78	0
3	JLJ	A	601	-	24,24,24	1.41	2 (8%)	30,31,31	2.49	7 (23%)
4	SO4	A	602	-	4,4,4	0.13	0	6,6,6	0.13	0

In the following table, the Chirals column lists the number of chiral outliers, the number of chiral centers analysed, the number of these observed in the model and the number defined in the Chemical Component Dictionary. Similar counts are reported in the Torsion and Rings columns. '-' means no outliers of that kind were identified.

Mol	Type	Chain	Res	Link	Chirals	Torsions	Rings
5	EDO	B	501	-	-	1/1/1/1	-
5	EDO	A	604	-	-	1/1/1/1	-
3	JLJ	A	601	-	-	3/14/14/14	0/2/2/2

All (2) bond length outliers are listed below:

Mol	Chain	Res	Type	Atoms	Z	Observed(Å)	Ideal(Å)
3	A	601	JLJ	C20-C28	4.48	1.51	1.44
3	A	601	JLJ	O26-C21	3.03	1.43	1.37

All (7) bond angle outliers are listed below:

Mol	Chain	Res	Type	Atoms	Z	Observed(°)	Ideal(°)
3	A	601	JLJ	O26-C41-C42	6.31	120.98	107.97
3	A	601	JLJ	N16-C11-N12	-6.20	120.67	126.55
3	A	601	JLJ	C15-N16-C11	6.10	120.86	115.45
3	A	601	JLJ	C11-N12-C13	4.95	120.81	114.99
3	A	601	JLJ	C14-C15-N16	-3.12	120.09	123.96
3	A	601	JLJ	C41-C42-C43	-2.90	122.06	126.75
3	A	601	JLJ	O17-C13-C14	2.11	120.38	116.71

There are no chirality outliers.

All (5) torsion outliers are listed below:

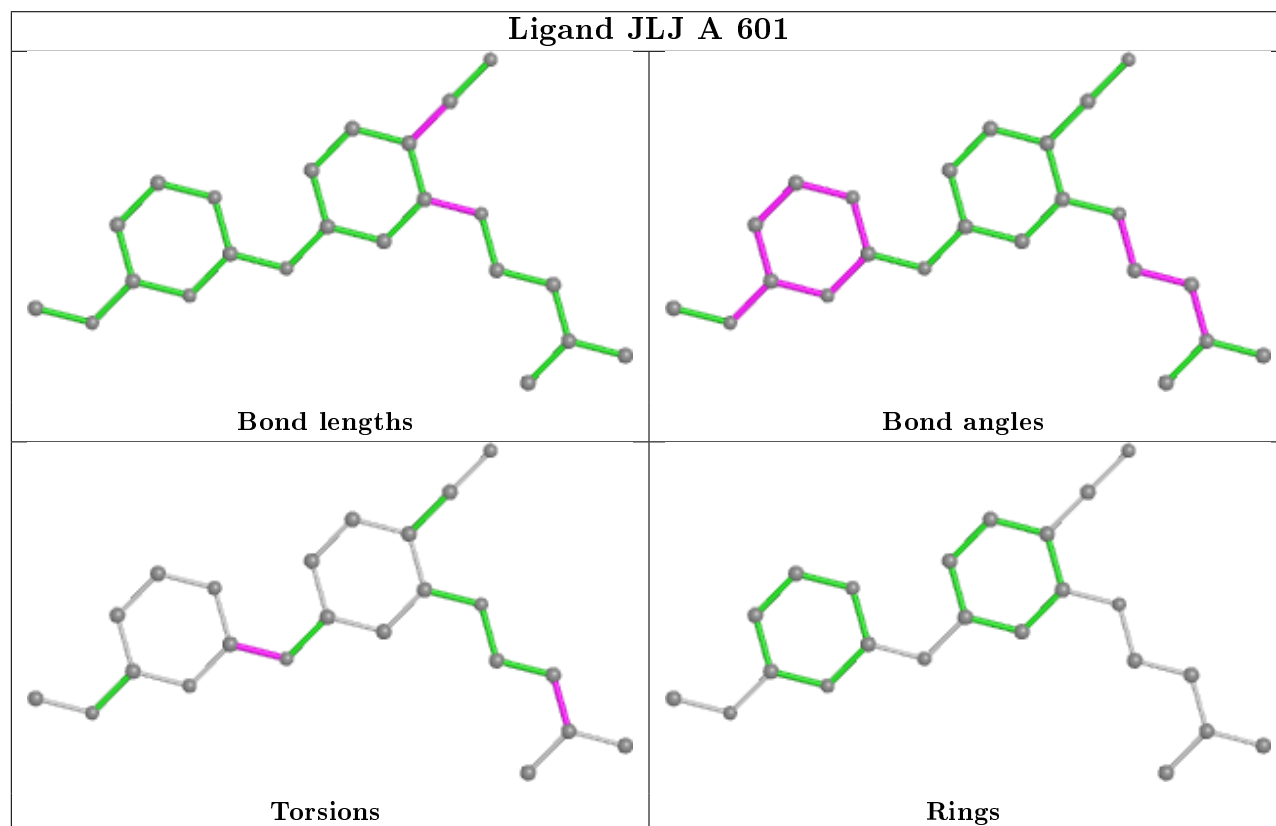
Mol	Chain	Res	Type	Atoms
5	B	501	EDO	O1-C1-C2-O2
5	A	604	EDO	O1-C1-C2-O2
3	A	601	JLJ	N12-C11-N19-C23
3	A	601	JLJ	N16-C11-N19-C23
3	A	601	JLJ	C41-C42-C43-C44

There are no ring outliers.

1 monomer is involved in 2 short contacts:

Mol	Chain	Res	Type	Clashes	Symm-Clashes
3	A	601	JLJ	2	0

The following is a two-dimensional graphical depiction of Mogul quality analysis of bond lengths, bond angles, torsion angles, and ring geometry for all instances of the Ligand of Interest. In addition, ligands with molecular weight > 250 and outliers as shown on the validation Tables will also be included. For torsion angles, if less than 5% of the Mogul distribution of torsion angles is within 10 degrees of the torsion angle in question, then that torsion angle is considered an outlier. Any bond that is central to one or more torsion angles identified as an outlier by Mogul will be highlighted in the graph. For rings, the root-mean-square deviation (RMSD) between the ring in question and similar rings identified by Mogul is calculated over all ring torsion angles. If the average RMSD is greater than 60 degrees and the minimal RMSD between the ring in question and any Mogul-identified rings is also greater than 60 degrees, then that ring is considered an outlier. The outliers are highlighted in purple. The color gray indicates Mogul did not find sufficient equivalents in the CSD to analyse the geometry.



5.7 Other polymers ⓘ

There are no such residues in this entry.

5.8 Polymer linkage issues ⓘ

There are no chain breaks in this entry.

6 Fit of model and data ⓘ

6.1 Protein, DNA and RNA chains ⓘ

In the following table, the column labelled ‘#RSRZ> 2’ contains the number (and percentage) of RSRZ outliers, followed by percent RSRZ outliers for the chain as percentile scores relative to all X-ray entries and entries of similar resolution. The OWAB column contains the minimum, median, 95th percentile and maximum values of the occupancy-weighted average B-factor per residue. The column labelled ‘Q< 0.9’ lists the number of (and percentage) of residues with an average occupancy less than 0.9.

Mol	Chain	Analysed	<RSRZ>	#RSRZ>2		OWAB(Å ²)	Q<0.9
1	A	556/557 (99%)	1.03	88 (15%)	2 2	25, 53, 93, 124	0
2	B	410/428 (95%)	1.10	71 (17%)	1 2	29, 51, 101, 120	0
All	All	966/985 (98%)	1.06	159 (16%)	1 2	25, 52, 99, 124	0

All (159) RSRZ outliers are listed below:

Mol	Chain	Res	Type	RSRZ
1	A	286	THR	10.3
2	B	89	GLU	10.0
1	A	24	TRP	9.8
1	A	69	THR	9.8
2	B	88	TRP	9.5
1	A	222	GLN	9.4
2	B	214	LEU	8.3
1	A	67	ASP	8.0
2	B	209	LEU	7.8
1	A	289	LEU	7.7
2	B	356	ARG	7.4
1	A	282	LEU	7.2
1	A	290	THR	7.2
1	A	250	ASP	6.9
1	A	257	ILE	6.8
2	B	212	TRP	6.7
1	A	68	SER	6.7
1	A	65	LYS	6.6
1	A	301	LEU	6.6
1	A	252	TRP	6.5
2	B	5	ILE	6.4
1	A	288	ALA	6.2
2	B	215	THR	6.1
2	B	193	LEU	6.0

Continued on next page...

Continued from previous page...

Mol	Chain	Res	Type	RSRZ
1	A	66	LYS	5.9
2	B	358	ARG	5.9
2	B	225	PRO	5.8
1	A	92	LEU	5.8
1	A	285	GLY	5.8
2	B	226	PRO	5.6
2	B	197	GLN	5.5
1	A	287	LYS	5.3
2	B	195	ILE	5.2
2	B	7	THR	5.2
2	B	231	GLY	5.1
1	A	70	LYS	5.1
1	A	64	LYS	5.0
2	B	239	TRP	5.0
1	A	292	VAL	5.0
1	A	254	VAL	4.9
2	B	14	PRO	4.9
1	A	116	PHE	4.8
2	B	284	ARG	4.8
2	B	357	MET	4.6
1	A	553	SER	4.5
1	A	-1	MET	4.5
2	B	230	MET	4.5
1	A	294	PRO	4.5
2	B	202	ILE	4.5
1	A	283	LEU	4.4
1	A	297	GLU	4.3
1	A	223	LYS	4.3
1	A	554	ALA	4.2
2	B	13	LYS	4.2
2	B	173	LYS	4.2
2	B	6	GLU	4.2
2	B	224	GLU	4.0
1	A	91	GLN	4.0
1	A	113	ASP	4.0
2	B	232	TYR	4.0
2	B	85	GLN	3.9
1	A	63	ILE	3.9
1	A	40	GLU	3.8
2	B	69	THR	3.8
2	B	229	TRP	3.7
1	A	256	ASP	3.7

Continued on next page...

Continued from previous page...

Mol	Chain	Res	Type	RSRZ
1	A	224	GLU	3.7
2	B	87	PHE	3.6
2	B	227	PHE	3.6
2	B	200	THR	3.6
2	B	210	LEU	3.6
1	A	291	GLU	3.6
1	A	295	LEU	3.6
1	A	50	ILE	3.4
1	A	293	ILE	3.4
1	A	279	LEU	3.4
2	B	9	PRO	3.4
1	A	552	VAL	3.3
2	B	168	LEU	3.3
1	A	244	ILE	3.3
1	A	309	ILE	3.3
2	B	178	ILE	3.2
2	B	194	GLU	3.2
2	B	240	THR	3.2
2	B	198	HIS	3.2
2	B	196	GLY	3.2
1	A	71	TRP	3.2
1	A	53	GLU	3.2
1	A	251	SER	3.2
2	B	86	ASP	3.1
2	B	166	LYS	3.1
1	A	52	PRO	3.1
1	A	284	ARG	3.1
2	B	318	TYR	3.1
1	A	4	PRO	3.1
1	A	298	GLU	3.0
2	B	355	ALA	3.0
1	A	410	TRP	3.0
2	B	170	PRO	3.0
1	A	550	LYS	3.0
1	A	255	ASN	3.0
1	A	308	GLU	2.9
1	A	117	SER	2.9
1	A	21	VAL	2.8
1	A	358	ARG	2.8
2	B	75	VAL	2.8
2	B	428	GLN	2.8
1	A	228	LEU	2.8

Continued on next page...

Continued from previous page...

Mol	Chain	Res	Type	RSRZ
2	B	176	PRO	2.7
2	B	12	LEU	2.7
1	A	61	PHE	2.7
2	B	8	VAL	2.7
1	A	214	LEU	2.7
2	B	359	GLY	2.7
1	A	246	LEU	2.7
2	B	272	PRO	2.6
2	B	206	ARG	2.6
2	B	211	ARG	2.6
2	B	174	GLN	2.6
1	A	448	ARG	2.6
1	A	247	PRO	2.6
1	A	496	VAL	2.6
2	B	315[A]	HIS	2.5
1	A	458	VAL	2.5
1	A	449	GLU	2.5
1	A	548	VAL	2.4
2	B	114	ALA	2.4
1	A	551	LEU	2.4
1	A	541	GLY	2.4
1	A	535	TRP	2.4
1	A	243	PRO	2.4
2	B	151	GLN	2.3
2	B	169	GLU	2.3
1	A	543	GLY	2.3
2	B	119	PRO	2.3
1	A	3	SER	2.3
2	B	204	GLU	2.3
2	B	15	GLY	2.2
1	A	300	GLU	2.2
1	A	372	VAL	2.2
1	A	51	GLY	2.2
2	B	427	TYR	2.2
1	A	220	LYS	2.2
1	A	304	ALA	2.2
1	A	411	ILE	2.2
2	B	199	ARG	2.2
2	B	354	TYR	2.2
1	A	497	THR	2.1
1	A	33	ALA	2.1
2	B	185	ASP	2.1

Continued on next page...

Continued from previous page...

Mol	Chain	Res	Type	RSRZ
2	B	108	VAL	2.1
1	A	302	GLU	2.1
1	A	442	VAL	2.1
1	A	263	LYS	2.1
2	B	152	GLY	2.1
1	A	346	PHE	2.1
1	A	26	LEU	2.1
2	B	60	VAL	2.0
2	B	233	GLU	2.0

6.2 Non-standard residues in protein, DNA, RNA chains [i](#)

There are no non-standard protein/DNA/RNA residues in this entry.

6.3 Carbohydrates [i](#)

There are no carbohydrates in this entry.

6.4 Ligands [i](#)

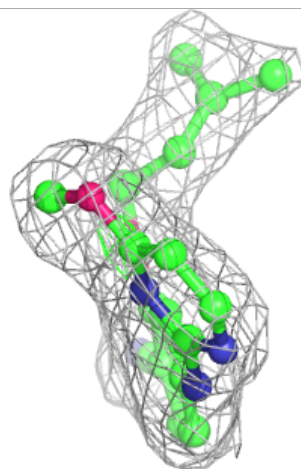
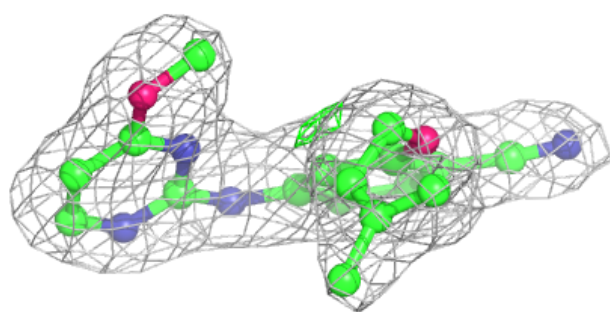
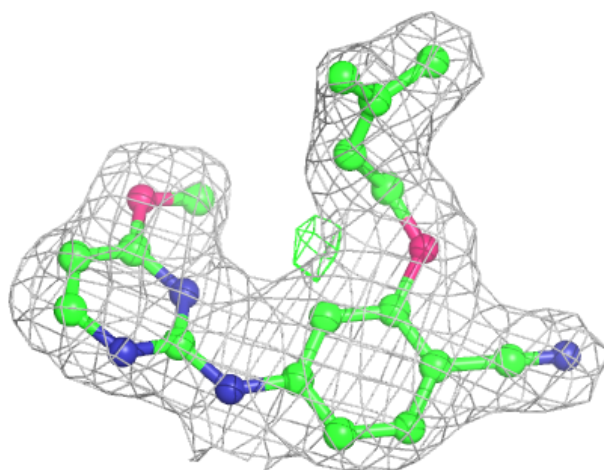
In the following table, the Atoms column lists the number of modelled atoms in the group and the number defined in the chemical component dictionary. The B-factors column lists the minimum, median, 95th percentile and maximum values of B factors of atoms in the group. The column labelled 'Q< 0.9' lists the number of atoms with occupancy less than 0.9.

Mol	Type	Chain	Res	Atoms	RSCC	RSR	B-factors(\AA^2)	Q<0.9
4	SO4	A	603	5/5	0.86	0.32	68,68,90,91	0
4	SO4	A	602	5/5	0.93	0.08	70,74,79,85	0
3	JLJ	A	601	23/23	0.94	0.13	35,40,46,49	0
5	EDO	B	501	4/4	0.95	0.12	40,42,45,46	0
5	EDO	A	604	4/4	0.95	0.10	41,43,48,50	0

The following is a graphical depiction of the model fit to experimental electron density of all instances of the Ligand of Interest. In addition, ligands with molecular weight > 250 and outliers as shown on the geometry validation Tables will also be included. Each fit is shown from different orientation to approximate a three-dimensional view.

Electron density around JLJ A 601:

$2mF_o-DF_c$ (at 0.7 rmsd) in gray
 mF_o-DF_c (at 3 rmsd) in purple (negative)
and green (positive)



6.5 Other polymers [i](#)

There are no such residues in this entry.