



Full wwPDB X-ray Structure Validation Report ⓘ

May 16, 2020 – 01:35 pm BST

PDB ID : 1KQP
Title : NH₃-DEPENDENT NAD⁺ SYNTHETASE FROM BACILLUS SUBTILIS
AT 1 Å RESOLUTION
Authors : Symersky, J.; Devedjiev, Y.; Moore, K.; Brouillette, C.; DeLucas, L.
Deposited on : 2002-01-07
Resolution : 1.03 Å(reported)

This is a Full wwPDB X-ray Structure Validation Report for a publicly released PDB entry.

We welcome your comments at validation@mail.wwpdb.org

A user guide is available at

<https://www.wwpdb.org/validation/2017/XrayValidationReportHelp>

with specific help available everywhere you see the ⓘ symbol.

The following versions of software and data (see [references ⓘ](#)) were used in the production of this report:

MolProbity	:	4.02b-467
Mogul	:	1.8.5 (274361), CSD as541be (2020)
Xtriage (Phenix)	:	1.13
EDS	:	2.11
buster-report	:	1.1.7 (2018)
Percentile statistics	:	20191225.v01 (using entries in the PDB archive December 25th 2019)
Refmac	:	5.8.0158
CCP4	:	7.0.044 (Gargrove)
Ideal geometry (proteins)	:	Engh & Huber (2001)
Ideal geometry (DNA, RNA)	:	Parkinson et al. (1996)
Validation Pipeline (wwPDB-VP)	:	2.11

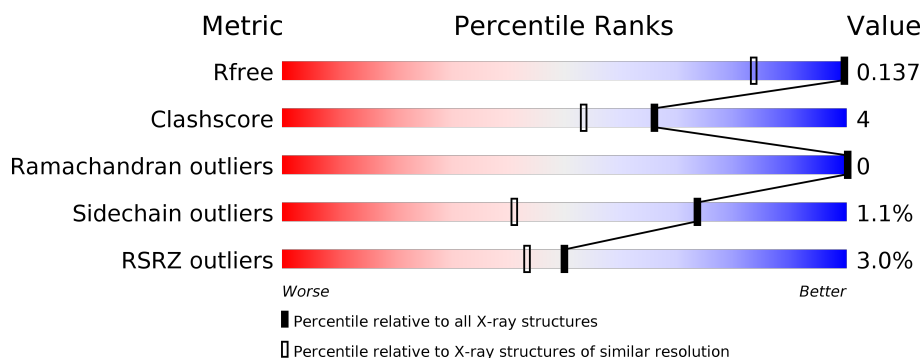
1 Overall quality at a glance

The following experimental techniques were used to determine the structure:

X-RAY DIFFRACTION

The reported resolution of this entry is 1.03 Å.

Percentile scores (ranging between 0-100) for global validation metrics of the entry are shown in the following graphic. The table shows the number of entries on which the scores are based.



Metric	Whole archive (#Entries)	Similar resolution (#Entries, resolution range(Å))
R_{free}	130704	1596 (1.10-0.98)
Clashscore	141614	1677 (1.10-0.98)
Ramachandran outliers	138981	1591 (1.10-0.98)
Sidechain outliers	138945	1589 (1.10-0.98)
RSRZ outliers	127900	1557 (1.10-0.98)

The table below summarises the geometric issues observed across the polymeric chains and their fit to the electron density. The red, orange, yellow and green segments on the lower bar indicate the fraction of residues that contain outliers for ≥ 3 , 2, 1 and 0 types of geometric quality criteria respectively. A grey segment represents the fraction of residues that are not modelled. The numeric value for each fraction is indicated below the corresponding segment, with a dot representing fractions $\leq 5\%$. The upper red bar (where present) indicates the fraction of residues that have poor fit to the electron density. The numeric value is given above the bar.

Mol	Chain	Length	Quality of chain
1	A	271	
1	B	271	

The following table lists non-polymeric compounds, carbohydrate monomers and non-standard residues in protein, DNA, RNA chains that are outliers for geometric or electron-density-fit criteria:

Mol	Type	Chain	Res	Chirality	Geometry	Clashes	Electron density
4	ADJ	A	3001	X	-	-	-
4	ADJ	B	3002	X	-	-	-

2 Entry composition [i](#)

There are 6 unique types of molecules in this entry. The entry contains 9587 atoms, of which 4355 are hydrogens and 0 are deuteriums.

In the tables below, the ZeroOcc column contains the number of atoms modelled with zero occupancy, the AltConf column contains the number of residues with at least one atom in alternate conformation and the Trace column contains the number of residues modelled with at most 2 atoms.

- Molecule 1 is a protein called NH(3)-dependent NAD(+) synthetase.

Mol	Chain	Residues	Atoms						ZeroOcc	AltConf	Trace
1	A	271	Total	C	H	N	O	S	0	11	0
			4316	1358	2150	367	435	6			
1	B	271	Total	C	H	N	O	S	0	7	0
			4296	1352	2139	364	433	8			

- Molecule 2 is MAGNESIUM ION (three-letter code: MG) (formula: Mg).

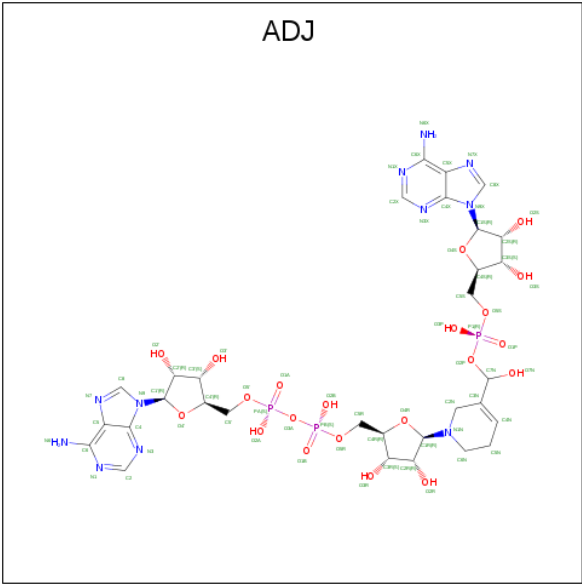
Mol	Chain	Residues	Atoms		ZeroOcc	AltConf
2	B	3	Total	Mg	0	0
			3	3		
2	A	2	Total	Mg	0	0
			2	2		

- Molecule 3 is 1,2-ETHANEDIOL (three-letter code: EDO) (formula: C₂H₆O₂).



Mol	Chain	Residues	Atoms	ZeroOcc	AltConf
3	A	1	Total C O 4 2 2	0	0
3	A	1	Total C O 4 2 2	0	0
3	A	1	Total C O 4 2 2	0	0
3	B	1	Total C O 4 2 2	0	0
3	B	1	Total C O 4 2 2	0	0
3	B	1	Total C O 4 2 2	0	0
3	B	1	Total C O 4 2 2	0	0
3	B	1	Total C O 4 2 2	0	0
3	B	1	Total C O 4 2 2	0	0
3	B	1	Total C O 4 2 2	0	0

- Molecule 4 is NICOTINAMIDE-ADENINE-DINUCLEOTIDE-ADENYLATE INTERMEDIATE (three-letter code: ADJ) (formula: C₃₁H₄₄N₁₁O₂₁P₃).



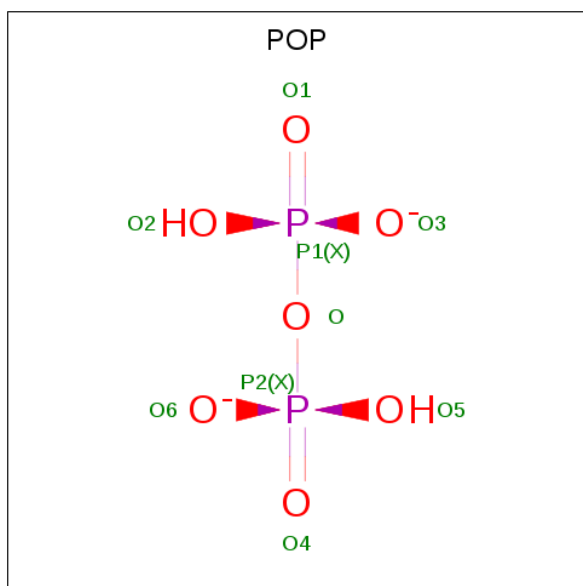
Mol	Chain	Residues	Atoms	ZeroOcc	AltConf
4	A	1	Total C H N O P 99 31 33 11 21 3	0	0

Continued on next page...

Continued from previous page...

Mol	Chain	Residues	Atoms					ZeroOcc	AltConf
4	B	1	Total	C	H	N	O	P	
			99	31	33	11	21	3	
								0	0

- Molecule 5 is PYROPHOSPHATE 2- (three-letter code: POP) (formula: $\text{H}_2\text{O}_7\text{P}_2$).



Mol	Chain	Residues	Atoms			ZeroOcc	AltConf
5	A	1	Total	O	P		
			9	7	2	0	0
5	B	1	Total	O	P		
			9	7	2	0	0


- Molecule 6 is water.

Mol	Chain	Residues	Atoms		ZeroOcc	AltConf
6	A	352	Total	O		
			352	352	0	0
6	B	362	Total	O		
			362	362	0	0

3 Residue-property plots [i](#)


These plots are drawn for all protein, RNA and DNA chains in the entry. The first graphic for a chain summarises the proportions of the various outlier classes displayed in the second graphic. The second graphic shows the sequence view annotated by issues in geometry and electron density. Residues are color-coded according to the number of geometric quality criteria for which they contain at least one outlier: green = 0, yellow = 1, orange = 2 and red = 3 or more. A red dot above a residue indicates a poor fit to the electron density ($RSRZ > 2$). Stretches of 2 or more consecutive residues without any outlier are shown as a green connector. Residues present in the sample, but not in the model, are shown in grey.

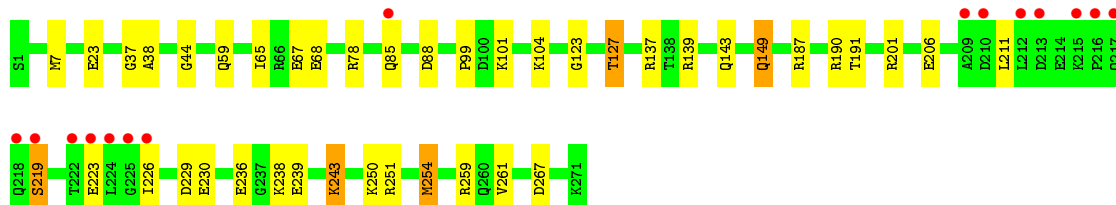
- Molecule 1: NH(3)-dependent NAD(+) synthetase

Chain A:  90% 9% .



- Molecule 1: NH(3)-dependent NAD(+) synthetase

Chain B:  6% 85% 14% .



4 Data and refinement statistics

Property	Value	Source
Space group	P 1 21 1	Depositor
Cell constants a, b, c, α , β , γ	52.28Å 84.79Å 59.64Å 90.00° 110.50° 90.00°	Depositor
Resolution (Å)	10.00 – 1.03 27.46 – 1.03	Depositor EDS
% Data completeness (in resolution range)	83.0 (10.00-1.03) 86.1 (27.46-1.03)	Depositor EDS
R_{merge}	0.05	Depositor
R_{sym}	(Not available)	Depositor
$\langle I/\sigma(I) \rangle$ ¹	2.58 (at 1.03Å)	Xtriage
Refinement program	SHELXL-97	Depositor
R, R_{free}	0.106 , 0.135 0.110 , 0.137	Depositor DCC
R_{free} test set	10822 reflections (5.00%)	wwPDB-VP
Wilson B-factor (Å ²)	11.0	Xtriage
Anisotropy	0.106	Xtriage
Bulk solvent k_{sol} (e/Å ³), B_{sol} (Å ²)	0.44 , 69.4	EDS
L-test for twinning ²	$\langle L \rangle = 0.49$, $\langle L^2 \rangle = 0.32$	Xtriage
Estimated twinning fraction	No twinning to report.	Xtriage
F_o, F_c correlation	0.99	EDS
Total number of atoms	9587	wwPDB-VP
Average B, all atoms (Å ²)	17.0	wwPDB-VP

Xtriage's analysis on translational NCS is as follows: *The largest off-origin peak in the Patterson function is 6.47% of the height of the origin peak. No significant pseudotranslation is detected.*

¹Intensities estimated from amplitudes.

²Theoretical values of $\langle |L| \rangle$, $\langle L^2 \rangle$ for acentric reflections are 0.5, 0.333 respectively for untwinned datasets, and 0.375, 0.2 for perfectly twinned datasets.

5 Model quality

5.1 Standard geometry

Bond lengths and bond angles in the following residue types are not validated in this section: MG, ADJ, EDO, POP

The Z score for a bond length (or angle) is the number of standard deviations the observed value is removed from the expected value. A bond length (or angle) with $|Z| > 5$ is considered an outlier worth inspection. RMSZ is the root-mean-square of all Z scores of the bond lengths (or angles).

Mol	Chain	Bond lengths		Bond angles	
		RMSZ	$\# Z > 5$	RMSZ	$\# Z > 5$
1	A	0.74	2/2255 (0.1%)	1.20	22/3032 (0.7%)
1	B	0.73	2/2235 (0.1%)	1.28	24/3004 (0.8%)
All	All	0.73	4/4490 (0.1%)	1.24	46/6036 (0.8%)

All (4) bond length outliers are listed below:

Mol	Chain	Res	Type	Atoms	Z	Observed(Å)	Ideal(Å)
1	A	259	ARG	CZ-NH1	-5.78	1.25	1.33
1	B	219	SER	CB-OG	-5.24	1.35	1.42
1	A	149	GLN	CD-NE2	-5.18	1.19	1.32
1	B	149	GLN	CD-NE2	-5.11	1.20	1.32

All (46) bond angle outliers are listed below:

Mol	Chain	Res	Type	Atoms	Z	Observed(°)	Ideal(°)
1	B	259	ARG	NE-CZ-NH1	-11.98	114.31	120.30
1	B	88	ASP	CB-CG-OD1	11.73	128.86	118.30
1	B	78	ARG	NE-CZ-NH1	11.06	125.83	120.30
1	A	190	ARG	NE-CZ-NH2	-10.51	115.04	120.30
1	A	187	ARG	NE-CZ-NH1	10.09	125.34	120.30
1	B	251	ARG	NE-CZ-NH1	-9.93	115.34	120.30
1	B	190	ARG	NE-CZ-NH1	9.08	124.84	120.30
1	B	201	ARG	NE-CZ-NH1	-8.93	115.83	120.30
1	A	88	ASP	CB-CG-OD2	8.74	126.17	118.30
1	A	268	ASP	CB-CG-OD1	8.38	125.84	118.30
1	B	259	ARG	NE-CZ-NH2	8.18	124.39	120.30
1	A	201	ARG	NE-CZ-NH2	-7.92	116.34	120.30
1	B	190	ARG	NH1-CZ-NH2	-7.57	111.08	119.40
1	B	201	ARG	NE-CZ-NH2	-7.56	116.52	120.30
1	A	123	GLY	O-C-N	-7.53	110.65	122.70

Continued on next page...

Continued from previous page...

Mol	Chain	Res	Type	Atoms	Z	Observed(°)	Ideal(°)
1	A	123	GLY	C-N-CA	7.50	140.46	121.70
1	B	78	ARG	NE-CZ-NH2	-7.50	116.55	120.30
1	B	190	ARG	NE-CZ-NH2	7.50	124.05	120.30
1	B	201	ARG	NH1-CZ-NH2	7.49	127.64	119.40
1	A	259	ARG	NE-CZ-NH1	-7.34	116.63	120.30
1	A	17	ASP	CB-CG-OD2	6.90	124.51	118.30
1	B	37	GLY	O-C-N	-6.74	111.91	122.70
1	A	190	ARG	NH1-CZ-NH2	6.70	126.77	119.40
1	A	78	ARG	NE-CZ-NH1	6.69	123.64	120.30
1	A	251	ARG	NE-CZ-NH1	6.48	123.54	120.30
1	A	187	ARG	CA-CB-CG	6.39	127.46	113.40
1	A	257	HIS	CG-ND1-CE1	6.36	117.11	108.20
1	A	137	ARG	NE-CZ-NH2	-6.34	117.13	120.30
1	A	106	ASP	CB-CG-OD1	6.10	123.79	118.30
1	B	38	ALA	N-CA-CB	5.99	118.49	110.10
1	B	251	ARG	NE-CZ-NH2	5.98	123.29	120.30
1	B	139	ARG	NE-CZ-NH1	5.93	123.27	120.30
1	B	137	ARG	NE-CZ-NH2	-5.92	117.34	120.30
1	A	74	PHE	CB-CG-CD2	5.72	124.81	120.80
1	B	137	ARG	NE-CZ-NH1	5.39	122.99	120.30
1	A	200[A]	GLU	CB-CG-CD	-5.36	99.72	114.20
1	A	200[B]	GLU	CB-CG-CD	-5.36	99.72	114.20
1	B	259	ARG	CD-NE-CZ	5.35	131.09	123.60
1	A	74	PHE	CG-CD2-CE2	5.30	126.63	120.80
1	A	78	ARG	NE-CZ-NH2	-5.18	117.71	120.30
1	B	254[A]	MET	CG-SD-CE	5.11	108.37	100.20
1	B	254[B]	MET	CG-SD-CE	5.11	108.37	100.20
1	A	213	ASP	CB-CG-OD2	-5.09	113.72	118.30
1	B	123	GLY	O-C-N	-5.07	114.59	122.70
1	B	127	THR	N-CA-CB	5.04	119.88	110.30
1	B	139	ARG	NE-CZ-NH2	-5.02	117.79	120.30

There are no chirality outliers.

There are no planarity outliers.

5.2 Too-close contacts

In the following table, the Non-H and H(model) columns list the number of non-hydrogen atoms and hydrogen atoms in the chain respectively. The H(added) column lists the number of hydrogen atoms added and optimized by MolProbity. The Clashes column lists the number of clashes within the asymmetric unit, whereas Symm-Clashes lists symmetry related clashes.

Mol	Chain	Non-H	H(model)	H(added)	Clashes	Symm-Clashes
1	A	2166	2150	2141	11	0
1	B	2157	2139	2131	25	0
2	A	2	0	0	0	0
2	B	3	0	0	0	0
3	A	12	0	18	0	0
3	B	28	0	42	7	0
4	A	66	33	39	3	0
4	B	66	33	40	2	0
5	A	9	0	0	0	0
5	B	9	0	0	0	0
6	A	352	0	0	6	0
6	B	362	0	0	5	0
All	All	5232	4355	4411	36	0

The all-atom clashscore is defined as the number of clashes found per 1000 atoms (including hydrogen atoms). The all-atom clashscore for this structure is 4.

All (36) close contacts within the same asymmetric unit are listed below, sorted by their clash magnitude.

Atom-1	Atom-2	Interatomic distance (Å)	Clash overlap (Å)
1:B:250:LYS:O	1:B:254[B]:MET:HG2	1.86	0.76
1:B:211:LEU:HD11	4:B:3002:ADJ:H5N	1.67	0.76
1:A:250:LYS:HG3	6:A:6117:HOH:O	1.92	0.70
1:B:206:GLU:OE2	1:B:219:SER:HB3	1.97	0.65
1:A:34:LYS:HD3	1:A:34:LYS:N	2.10	0.64
1:B:226:ILE:HG13	1:B:230:GLU:OE2	1.99	0.63
1:A:30:LYS:O	1:A:34:LYS:HE3	2.02	0.60
1:A:211:LEU:HD11	4:A:3001:ADJ:H5N	1.85	0.57
4:A:3001:ADJ:H5'2	6:A:6595:HOH:O	2.04	0.56
1:B:243:LYS:HE2	6:B:6518:HOH:O	2.06	0.54
1:B:23[B]:GLU:OE1	3:B:2005:EDO:H21	2.07	0.54
1:B:191[A]:THR:HG21	6:B:6635:HOH:O	2.07	0.53
4:A:3001:ADJ:C5'	6:A:6595:HOH:O	2.58	0.51
1:B:239:GLU:O	1:B:239:GLU:HG3	2.10	0.51
1:B:7[C]:MET:HE1	6:B:6641:HOH:O	2.10	0.51
1:B:67:GLU:OE1	3:B:2006:EDO:H22	2.11	0.50
1:B:44:GLY:H	1:B:143:GLN:NE2	2.10	0.49
1:A:149:GLN:HE22	1:B:127:THR:H	1.60	0.48
1:B:187:ARG:O	1:B:191[A]:THR:HG23	2.13	0.47
1:B:223:GLU:OE2	4:B:3002:ADJ:O3R	2.28	0.47
1:A:7:MET:HG2	1:A:235:LEU:O	2.16	0.46
1:B:65:ILE:O	1:B:68[B]:GLU:HG2	2.16	0.46

Continued on next page...

Continued from previous page...

Atom-1	Atom-2	Interatomic distance (Å)	Clash overlap (Å)
1:B:261:VAL:HG23	3:B:2009:EDO:H11	1.99	0.45
1:B:23[B]:GLU:CD	3:B:2005:EDO:H21	2.37	0.45
1:A:201:ARG:NH2	6:A:6650:HOH:O	2.50	0.45
1:A:39:LYS:HG2	6:A:6476:HOH:O	2.17	0.45
1:A:18:PRO:HG2	6:A:6626:HOH:O	2.17	0.44
1:B:68[A]:GLU:OE1	3:B:2006:EDO:O1	2.27	0.44
1:A:59:GLN:NE2	1:A:99:PRO:HA	2.33	0.43
1:B:261:VAL:CG2	3:B:2009:EDO:H11	2.49	0.43
1:B:59:GLN:NE2	1:B:99:PRO:HA	2.34	0.42
1:B:236:GLU:OE2	1:B:238:LYS:NZ	2.48	0.42
1:A:130:ASN:HD22	1:B:149:GLN:HE21	1.68	0.41
1:B:101:LYS:NZ	6:B:6517:HOH:O	2.54	0.41
1:B:7[C]:MET:CE	6:B:6641:HOH:O	2.69	0.41
1:B:267:ASP:OD1	3:B:2009:EDO:H22	2.21	0.40

There are no symmetry-related clashes.

5.3 Torsion angles [i](#)

5.3.1 Protein backbone [i](#)

In the following table, the Percentiles column shows the percent Ramachandran outliers of the chain as a percentile score with respect to all X-ray entries followed by that with respect to entries of similar resolution.

The Analysed column shows the number of residues for which the backbone conformation was analysed, and the total number of residues.

Mol	Chain	Analysed	Favoured	Allowed	Outliers	Percentiles	
1	A	280/271 (103%)	279 (100%)	1 (0%)	0	100	100
1	B	278/271 (103%)	278 (100%)	0	0	100	100
All	All	558/542 (103%)	557 (100%)	1 (0%)	0	100	100

There are no Ramachandran outliers to report.

5.3.2 Protein sidechains [i](#)

In the following table, the Percentiles column shows the percent sidechain outliers of the chain as a percentile score with respect to all X-ray entries followed by that with respect to entries of similar resolution.

The Analysed column shows the number of residues for which the sidechain conformation was analysed, and the total number of residues.

Mol	Chain	Analysed	Rotameric	Outliers	Percentiles	
1	A	237/226 (105%)	236 (100%)	1 (0%)	91	72
1	B	235/226 (104%)	231 (98%)	4 (2%)	60	25
All	All	472/452 (104%)	467 (99%)	5 (1%)	73	41

All (5) residues with a non-rotameric sidechain are listed below:

Mol	Chain	Res	Type
1	A	34	LYS
1	B	85	GLN
1	B	104	LYS
1	B	229	ASP
1	B	243	LYS

Some sidechains can be flipped to improve hydrogen bonding and reduce clashes. All (17) such sidechains are listed below:

Mol	Chain	Res	Type
1	A	3	GLN
1	A	27	ASN
1	A	59	GLN
1	A	91	GLN
1	A	117	GLN
1	A	119	GLN
1	A	149	GLN
1	A	260	GLN
1	B	20	GLN
1	B	27	ASN
1	B	59	GLN
1	B	81	HIS
1	B	91	GLN
1	B	130	ASN
1	B	143	GLN
1	B	149	GLN
1	B	260	GLN

5.3.3 RNA ⓘ

There are no RNA molecules in this entry.

5.4 Non-standard residues in protein, DNA, RNA chains ⓘ

There are no non-standard protein/DNA/RNA residues in this entry.

5.5 Carbohydrates ⓘ

There are no carbohydrates in this entry.

5.6 Ligand geometry ⓘ

Of 19 ligands modelled in this entry, 5 are monoatomic - leaving 14 for Mogul analysis.

In the following table, the Counts columns list the number of bonds (or angles) for which Mogul statistics could be retrieved, the number of bonds (or angles) that are observed in the model and the number of bonds (or angles) that are defined in the Chemical Component Dictionary. The Link column lists molecule types, if any, to which the group is linked. The Z score for a bond length (or angle) is the number of standard deviations the observed value is removed from the expected value. A bond length (or angle) with $|Z| > 2$ is considered an outlier worth inspection. RMSZ is the root-mean-square of all Z scores of the bond lengths (or angles).

Mol	Type	Chain	Res	Link	Bond lengths			Bond angles		
					Counts	RMSZ	$\# Z > 2$	Counts	RMSZ	$\# Z > 2$
3	EDO	A	2002	-	3,3,3	0.55	0	2,2,2	0.51	0
3	EDO	B	2007	-	3,3,3	0.96	0	2,2,2	0.63	0
3	EDO	B	2006	-	3,3,3	0.79	0	2,2,2	0.40	0
5	POP	A	4001	2	6,8,8	0.75	0	13,13,13	1.14	1 (7%)
3	EDO	B	2003	-	3,3,3	0.42	0	2,2,2	0.77	0
5	POP	B	4002	2	6,8,8	0.64	0	13,13,13	1.14	1 (7%)
4	ADJ	B	3002	2	62,73,73	2.03	8 (12%)	71,112,112	2.15	11 (15%)
3	EDO	B	2009	-	3,3,3	0.80	0	2,2,2	0.38	0
3	EDO	B	2005	-	3,3,3	0.25	0	2,2,2	0.49	0
4	ADJ	A	3001	2	62,73,73	2.18	12 (19%)	71,112,112	1.74	11 (15%)
3	EDO	A	2008	-	3,3,3	0.91	0	2,2,2	1.11	0
3	EDO	B	2004	-	3,3,3	0.52	0	2,2,2	0.24	0
3	EDO	A	2001	-	3,3,3	0.38	0	2,2,2	0.45	0
3	EDO	B	2010	-	3,3,3	0.38	0	2,2,2	3.32	1 (50%)

In the following table, the Chirals column lists the number of chiral outliers, the number of chiral centers analysed, the number of these observed in the model and the number defined in the Chemical Component Dictionary. Similar counts are reported in the Torsion and Rings columns. '-' means no outliers of that kind were identified.

Mol	Type	Chain	Res	Link	Chirals	Torsions	Rings
3	EDO	A	2002	-	-	0/1/1/1	-
3	EDO	B	2007	-	-	0/1/1/1	-
3	EDO	B	2006	-	-	1/1/1/1	-
5	POP	A	4001	2	-	0/6/6/6	-
3	EDO	B	2003	-	-	1/1/1/1	-
5	POP	B	4002	2	-	0/6/6/6	-
4	ADJ	B	3002	2	1/1/19/19	7/32/103/103	0/8/8/8
3	EDO	B	2009	-	-	1/1/1/1	-
3	EDO	B	2005	-	-	0/1/1/1	-
4	ADJ	A	3001	2	1/1/19/19	6/32/103/103	0/8/8/8
3	EDO	A	2008	-	-	0/1/1/1	-
3	EDO	B	2004	-	-	0/1/1/1	-
3	EDO	A	2001	-	-	0/1/1/1	-
3	EDO	B	2010	-	-	1/1/1/1	-

All (20) bond length outliers are listed below:

Mol	Chain	Res	Type	Atoms	Z	Observed(Å)	Ideal(Å)
4	A	3001	ADJ	C6N-N1N	-9.07	1.29	1.47
4	B	3002	ADJ	C2N-C3N	-7.72	1.36	1.51
4	B	3002	ADJ	C2N-N1N	-7.36	1.29	1.47
4	A	3001	ADJ	C2N-N1N	-6.60	1.31	1.47
4	A	3001	ADJ	C5N-C4N	-5.90	1.34	1.50
4	B	3002	ADJ	C5N-C4N	-5.27	1.36	1.50
4	B	3002	ADJ	C4N-C3N	5.09	1.43	1.33
4	A	3001	ADJ	C2N-C3N	-5.05	1.41	1.51
4	B	3002	ADJ	C6N-N1N	-5.02	1.37	1.47
4	A	3001	ADJ	C4N-C3N	5.00	1.43	1.33
4	B	3002	ADJ	C6N-C5N	-3.33	1.45	1.51
4	A	3001	ADJ	O7N-C7N	-3.16	1.29	1.38
4	A	3001	ADJ	P1-O1P	3.15	1.62	1.50
4	B	3002	ADJ	PB-O5R	-2.76	1.48	1.59
4	B	3002	ADJ	P1-O2P	-2.74	1.53	1.60
4	A	3001	ADJ	C6N-C5N	-2.61	1.46	1.51
4	A	3001	ADJ	O4S-C1S	2.60	1.44	1.41
4	A	3001	ADJ	O3S-C3S	-2.32	1.37	1.43
4	A	3001	ADJ	P1-O2P	-2.18	1.54	1.60
4	A	3001	ADJ	C8-N7	-2.14	1.30	1.34

All (25) bond angle outliers are listed below:

Mol	Chain	Res	Type	Atoms	Z	Observed(°)	Ideal(°)
4	B	3002	ADJ	C3N-C2N-N1N	9.43	131.19	112.91

Continued on next page...

Continued from previous page...

Mol	Chain	Res	Type	Atoms	Z	Observed(°)	Ideal(°)
4	B	3002	ADJ	C6N-C5N-C4N	7.96	119.99	111.70
4	A	3001	ADJ	C2N-N1N-C6N	6.27	117.18	109.43
4	A	3001	ADJ	C3N-C2N-N1N	5.70	123.96	112.91
4	B	3002	ADJ	O4R-C1R-N1N	-5.53	101.51	109.47
4	A	3001	ADJ	C5N-C6N-N1N	5.52	125.36	112.34
4	B	3002	ADJ	C2N-N1N-C6N	5.12	115.76	109.43
4	A	3001	ADJ	C6N-C5N-C4N	4.88	116.78	111.70
3	B	2010	EDO	O1-C1-C2	4.65	145.38	111.91
4	B	3002	ADJ	C6N-N1N-C1R	4.54	125.70	115.09
4	A	3001	ADJ	C2N-N1N-C1R	3.71	123.93	112.79
4	A	3001	ADJ	C5-C6-N6	2.94	124.81	120.35
4	B	3002	ADJ	C5N-C6N-N1N	2.91	119.20	112.34
4	B	3002	ADJ	PB-O5R-C5R	-2.88	104.82	121.68
4	B	3002	ADJ	O5R-C5R-C4R	-2.82	99.27	108.99
4	B	3002	ADJ	O5R-PB-O1B	2.82	120.09	109.07
5	A	4001	POP	P2-O-P1	-2.75	123.38	132.83
4	B	3002	ADJ	O4R-C1R-C2R	-2.71	100.74	106.64
5	B	4002	POP	P2-O-P1	-2.61	123.88	132.83
4	A	3001	ADJ	C1'-N9-C4	-2.55	122.17	126.64
4	A	3001	ADJ	C5N-C4N-C3N	-2.45	118.86	123.75
4	B	3002	ADJ	C5N-C4N-C3N	-2.29	119.18	123.75
4	A	3001	ADJ	C5'-C4'-C3'	-2.14	107.16	115.18
4	A	3001	ADJ	O4R-C1R-N1N	-2.09	106.46	109.47
4	A	3001	ADJ	O2P-P1-O1P	2.00	116.97	109.47

All (2) chirality outliers are listed below:

Mol	Chain	Res	Type	Atom
4	B	3002	ADJ	C7N
4	A	3001	ADJ	C7N

All (17) torsion outliers are listed below:

Mol	Chain	Res	Type	Atoms
4	B	3002	ADJ	PA-O3A-PB-O5R
4	B	3002	ADJ	PB-O3A-PA-O5'
4	B	3002	ADJ	O4R-C1R-N1N-C2N
4	A	3001	ADJ	O4R-C1R-N1N-C2N
4	B	3002	ADJ	O4R-C4R-C5R-O5R
4	B	3002	ADJ	C3R-C4R-C5R-O5R
4	A	3001	ADJ	C4R-C5R-O5R-PB
3	B	2003	EDO	O1-C1-C2-O2

Continued on next page...

Continued from previous page...

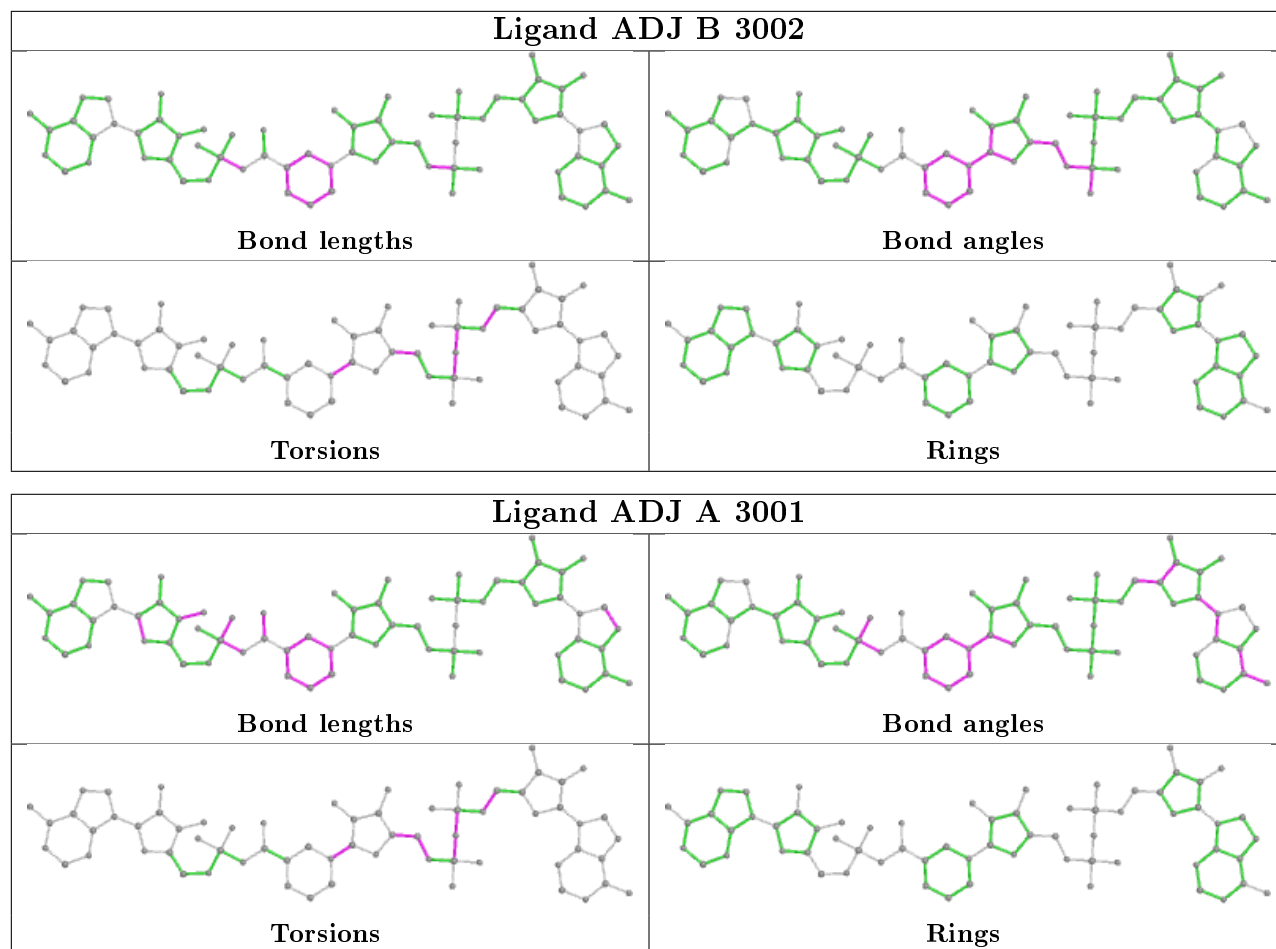
Mol	Chain	Res	Type	Atoms
4	A	3001	ADJ	PB-O3A-PA-O5'
4	A	3001	ADJ	C4'-C5'-O5'-PA
4	A	3001	ADJ	PA-O3A-PB-O2B
4	B	3002	ADJ	C4'-C5'-O5'-PA
4	B	3002	ADJ	C2R-C1R-N1N-C2N
3	B	2009	EDO	O1-C1-C2-O2
3	B	2006	EDO	O1-C1-C2-O2
4	A	3001	ADJ	O4R-C4R-C5R-O5R
3	B	2010	EDO	O1-C1-C2-O2

There are no ring outliers.

5 monomers are involved in 12 short contacts:

Mol	Chain	Res	Type	Clashes	Symm-Clashes
3	B	2006	EDO	2	0
4	B	3002	ADJ	2	0
3	B	2009	EDO	3	0
3	B	2005	EDO	2	0
4	A	3001	ADJ	3	0

The following is a two-dimensional graphical depiction of Mogul quality analysis of bond lengths, bond angles, torsion angles, and ring geometry for all instances of the Ligand of Interest. In addition, ligands with molecular weight > 250 and outliers as shown on the validation Tables will also be included. For torsion angles, if less than 5% of the Mogul distribution of torsion angles is within 10 degrees of the torsion angle in question, then that torsion angle is considered an outlier. Any bond that is central to one or more torsion angles identified as an outlier by Mogul will be highlighted in the graph. For rings, the root-mean-square deviation (RMSD) between the ring in question and similar rings identified by Mogul is calculated over all ring torsion angles. If the average RMSD is greater than 60 degrees and the minimal RMSD between the ring in question and any Mogul-identified rings is also greater than 60 degrees, then that ring is considered an outlier. The outliers are highlighted in purple. The color gray indicates Mogul did not find sufficient equivalents in the CSD to analyse the geometry.



5.7 Other polymers [i](#)

There are no such residues in this entry.

5.8 Polymer linkage issues [i](#)

There are no chain breaks in this entry.

6 Fit of model and data [i](#)

6.1 Protein, DNA and RNA chains [i](#)

In the following table, the column labelled ‘#RSRZ> 2’ contains the number (and percentage) of RSRZ outliers, followed by percent RSRZ outliers for the chain as percentile scores relative to all X-ray entries and entries of similar resolution. The OWAB column contains the minimum, median, 95th percentile and maximum values of the occupancy-weighted average B-factor per residue. The column labelled ‘Q< 0.9’ lists the number of (and percentage) of residues with an average occupancy less than 0.9.

Mol	Chain	Analysed	<RSRZ>	#RSRZ>2	OWAB(Å ²)	Q<0.9
1	A	271/271 (100%)	-0.47	1 (0%) 92 88	8, 12, 25, 33	2 (0%)
1	B	271/271 (100%)	-0.12	15 (5%) 25 23	9, 12, 27, 36	3 (1%)
All	All	542/542 (100%)	-0.29	16 (2%) 50 43	8, 12, 26, 36	5 (0%)

All (16) RSRZ outliers are listed below:

Mol	Chain	Res	Type	RSRZ
1	B	216	PRO	5.1
1	B	212	LEU	3.9
1	B	215	LYS	3.8
1	B	222	THR	3.5
1	B	209	ALA	3.0
1	B	218	GLN	2.9
1	B	225	GLY	2.9
1	B	217	GLN	2.7
1	B	226	ILE	2.6
1	B	219	SER	2.6
1	B	223	GLU	2.5
1	B	213	ASP	2.4
1	B	224	LEU	2.4
1	B	85	GLN	2.3
1	A	34	LYS	2.1
1	B	210	ASP	2.0

6.2 Non-standard residues in protein, DNA, RNA chains [i](#)

There are no non-standard protein/DNA/RNA residues in this entry.

6.3 Carbohydrates

There are no carbohydrates in this entry.

6.4 Ligands

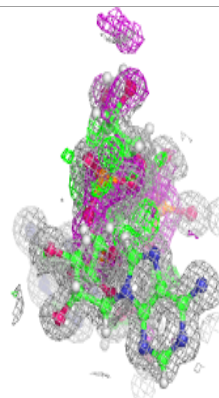
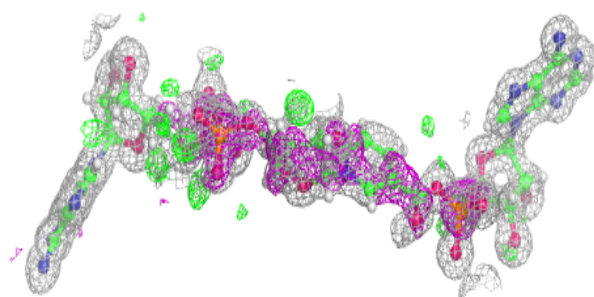
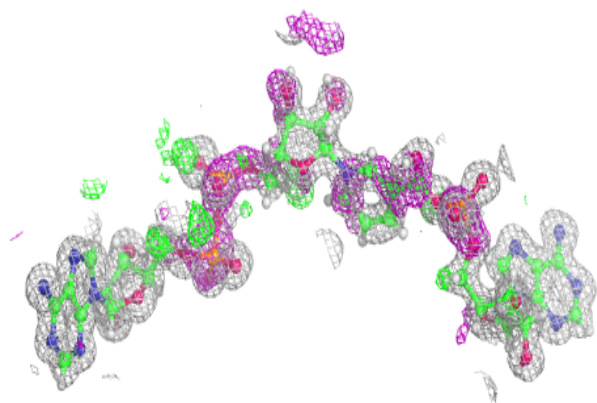
In the following table, the Atoms column lists the number of modelled atoms in the group and the number defined in the chemical component dictionary. The B-factors column lists the minimum, median, 95th percentile and maximum values of B factors of atoms in the group. The column labelled 'Q< 0.9' lists the number of atoms with occupancy less than 0.9.

Mol	Type	Chain	Res	Atoms	RSCC	RSR	B-factors(\AA^2)	Q<0.9
3	EDO	B	2006	4/4	0.75	0.18	26,29,34,34	0
3	EDO	B	2005	4/4	0.82	0.12	23,23,24,44	0
3	EDO	B	2003	4/4	0.85	0.15	21,29,34,39	0
3	EDO	B	2009	4/4	0.87	0.13	24,30,34,42	0
3	EDO	B	2007	4/4	0.91	0.12	16,17,20,21	0
3	EDO	B	2010	4/4	0.92	0.10	17,18,28,28	0
4	ADJ	A	3001	66/66	0.94	0.09	9,13,20,40	0
3	EDO	A	2008	4/4	0.94	0.12	14,21,26,30	0
3	EDO	A	2001	4/4	0.97	0.06	16,19,29,29	0
3	EDO	A	2002	4/4	0.98	0.05	14,15,17,21	0
3	EDO	B	2004	4/4	0.98	0.05	15,21,25,29	0
4	ADJ	B	3002	66/66	0.98	0.07	9,12,46,82	0
5	POP	B	4002	9/9	1.00	0.05	9,9,10,10	0
2	MG	B	5005	1/1	1.00	0.04	12,12,12,12	0
2	MG	A	5001	1/1	1.00	0.05	9,9,9,9	0
2	MG	A	5002	1/1	1.00	0.03	9,9,9,9	0
2	MG	B	5004	1/1	1.00	0.03	10,10,10,10	0
5	POP	A	4001	9/9	1.00	0.05	8,8,8,9	0
2	MG	B	5003	1/1	1.00	0.04	10,10,10,10	0

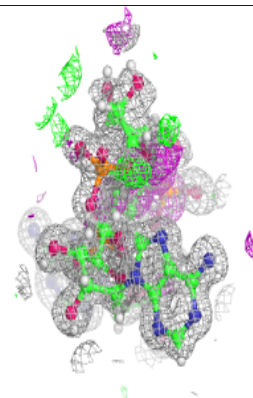
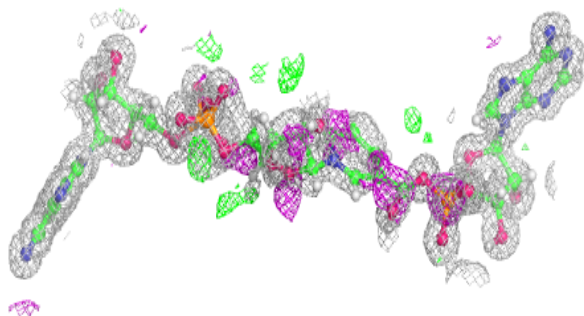
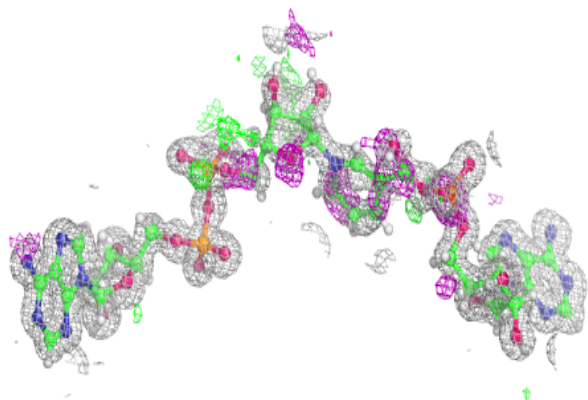
The following is a graphical depiction of the model fit to experimental electron density of all instances of the Ligand of Interest. In addition, ligands with molecular weight > 250 and outliers as shown on the geometry validation Tables will also be included. Each fit is shown from different orientation to approximate a three-dimensional view.

Electron density around ADJ A 3001:

$2mF_o-DF_c$ (at 0.7 rmsd) in gray
 mF_o-DF_c (at 3 rmsd) in purple (negative)
and green (positive)

**Electron density around ADJ B 3002:**

$2mF_o-DF_c$ (at 0.7 rmsd) in gray
 mF_o-DF_c (at 3 rmsd) in purple (negative)
and green (positive)



6.5 Other polymers [i](#)

There are no such residues in this entry.