



# Full wwPDB X-ray Structure Validation Report ⓘ

May 15, 2020 – 06:45 pm BST

PDB ID : 5KR7  
Title : KDM4C bound to pyrazolo-pyrimidine scaffold  
Authors : Bellon, S.F.; Poy, F.; Setser, J.W.  
Deposited on : 2016-07-07  
Resolution : 1.90 Å(reported)

This is a Full wwPDB X-ray Structure Validation Report for a publicly released PDB entry.

We welcome your comments at [validation@mail.wwpdb.org](mailto:validation@mail.wwpdb.org)

A user guide is available at

<https://www.wwpdb.org/validation/2017/XrayValidationReportHelp>

with specific help available everywhere you see the ⓘ symbol.

---

The following versions of software and data (see [references ⓘ](#)) were used in the production of this report:

MolProbity : 4.02b-467  
Mogul : 1.8.5 (274361), CSD as541be (2020)  
Xtriage (Phenix) : 1.13  
EDS : 2.11  
Percentile statistics : 20191225.v01 (using entries in the PDB archive December 25th 2019)  
Refmac : 5.8.0158  
CCP4 : 7.0.044 (Gargrove)  
Ideal geometry (proteins) : Engh & Huber (2001)  
Ideal geometry (DNA, RNA) : Parkinson et al. (1996)  
Validation Pipeline (wwPDB-VP) : 2.11

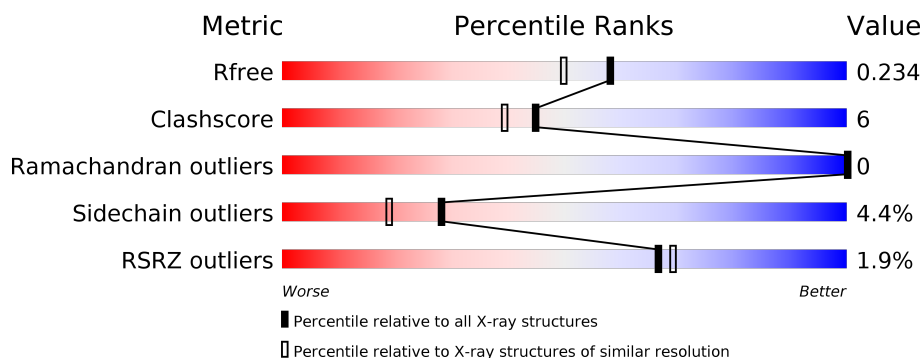
# 1 Overall quality at a glance ⓘ

The following experimental techniques were used to determine the structure:

## *X-RAY DIFFRACTION*

The reported resolution of this entry is 1.90 Å.

Percentile scores (ranging between 0-100) for global validation metrics of the entry are shown in the following graphic. The table shows the number of entries on which the scores are based.



Metric	Whole archive (#Entries)	Similar resolution (#Entries, resolution range(Å))
$R_{free}$	130704	6207 (1.90-1.90)
Clashscore	141614	6847 (1.90-1.90)
Ramachandran outliers	138981	6760 (1.90-1.90)
Sidechain outliers	138945	6760 (1.90-1.90)
RSRZ outliers	127900	6082 (1.90-1.90)

The table below summarises the geometric issues observed across the polymeric chains and their fit to the electron density. The red, orange, yellow and green segments on the lower bar indicate the fraction of residues that contain outliers for  $\geq 3$ , 2, 1 and 0 types of geometric quality criteria respectively. A grey segment represents the fraction of residues that are not modelled. The numeric value for each fraction is indicated below the corresponding segment, with a dot representing fractions  $\leq 5\%$ . The upper red bar (where present) indicates the fraction of residues that have poor fit to the electron density. The numeric value is given above the bar.

Mol	Chain	Length	Quality of chain
1	A	367	<div> <div>2%</div> <div> <div></div> <div>81%</div> <div>10%</div> <div>7%</div> </div> </div>
1	B	367	<div> <div>2%</div> <div> <div></div> <div>81%</div> <div>9%</div> <div>8%</div> </div> </div>

## 2 Entry composition [i](#)

There are 6 unique types of molecules in this entry. The entry contains 6018 atoms, of which 0 are hydrogens and 0 are deuteriums.

In the tables below, the ZeroOcc column contains the number of atoms modelled with zero occupancy, the AltConf column contains the number of residues with at least one atom in alternate conformation and the Trace column contains the number of residues modelled with at most 2 atoms.

- Molecule 1 is a protein called Lysine-specific demethylase 4C.

Mol	Chain	Residues	Atoms					ZeroOcc	AltConf	Trace
1	A	340	Total	C	N	O	S	0	0	0
			2788	1802	463	504	19			
1	B	339	Total	C	N	O	S	0	0	0
			2777	1795	461	502	19			

There are 34 discrepancies between the modelled and reference sequences:

Chain	Residue	Modelled	Actual	Comment	Reference
A	-16	GLY	-	expression tag	UNP Q9H3R0
A	-15	SER	-	expression tag	UNP Q9H3R0
A	-14	HIS	-	expression tag	UNP Q9H3R0
A	-13	MET	-	expression tag	UNP Q9H3R0
A	-12	ALA	-	expression tag	UNP Q9H3R0
A	-11	SER	-	expression tag	UNP Q9H3R0
A	-10	MET	-	expression tag	UNP Q9H3R0
A	-9	THR	-	expression tag	UNP Q9H3R0
A	-8	GLY	-	expression tag	UNP Q9H3R0
A	-7	GLY	-	expression tag	UNP Q9H3R0
A	-6	GLN	-	expression tag	UNP Q9H3R0
A	-5	GLN	-	expression tag	UNP Q9H3R0
A	-4	MET	-	expression tag	UNP Q9H3R0
A	-3	GLY	-	expression tag	UNP Q9H3R0
A	-2	ARG	-	expression tag	UNP Q9H3R0
A	-1	GLY	-	expression tag	UNP Q9H3R0
A	0	SER	-	expression tag	UNP Q9H3R0
B	-16	GLY	-	expression tag	UNP Q9H3R0
B	-15	SER	-	expression tag	UNP Q9H3R0
B	-14	HIS	-	expression tag	UNP Q9H3R0
B	-13	MET	-	expression tag	UNP Q9H3R0
B	-12	ALA	-	expression tag	UNP Q9H3R0
B	-11	SER	-	expression tag	UNP Q9H3R0
B	-10	MET	-	expression tag	UNP Q9H3R0
B	-9	THR	-	expression tag	UNP Q9H3R0

*Continued on next page...*

*Continued from previous page...*

Chain	Residue	Modelled	Actual	Comment	Reference
B	-8	GLY	-	expression tag	UNP Q9H3R0
B	-7	GLY	-	expression tag	UNP Q9H3R0
B	-6	GLN	-	expression tag	UNP Q9H3R0
B	-5	GLN	-	expression tag	UNP Q9H3R0
B	-4	MET	-	expression tag	UNP Q9H3R0
B	-3	GLY	-	expression tag	UNP Q9H3R0
B	-2	ARG	-	expression tag	UNP Q9H3R0
B	-1	GLY	-	expression tag	UNP Q9H3R0
B	0	SER	-	expression tag	UNP Q9H3R0

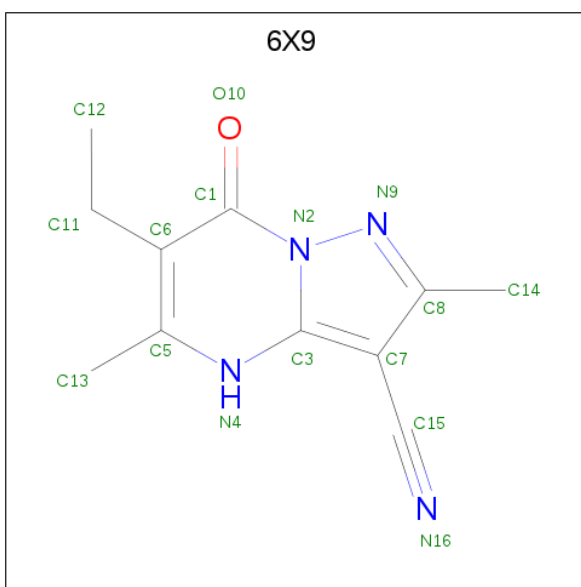
- Molecule 2 is FE (II) ION (three-letter code: FE2) (formula: Fe).

Mol	Chain	Residues	Atoms	ZeroOcc	AltConf
2	B	1	Total Fe 1 1	0	0
2	A	1	Total Fe 1 1	0	0

- Molecule 3 is ZINC ION (three-letter code: ZN) (formula: Zn).

Mol	Chain	Residues	Atoms	ZeroOcc	AltConf
3	B	1	Total Zn 1 1	0	0
3	A	1	Total Zn 1 1	0	0

- Molecule 4 is 6-ethyl-2,5-dimethyl-7-oxidanylidene-4 {H}-pyrazolo[1,5-a]pyrimidine-3-carbonitrile (three-letter code: 6X9) (formula: C<sub>11</sub>H<sub>12</sub>N<sub>4</sub>O).



Mol	Chain	Residues	Atoms				ZeroOcc	AltConf
4	A	1	Total	C	N	O	0	0
			16	11	4	1		
4	B	1	Total	C	N	O	0	0
			16	11	4	1		

- Molecule 5 is CHLORIDE ION (three-letter code: CL) (formula: Cl).

Mol	Chain	Residues	Atoms		ZeroOcc	AltConf
5	B	1	Total	Cl	0	0
			1	1		
5	A	1	Total	Cl	0	0
			1	1		

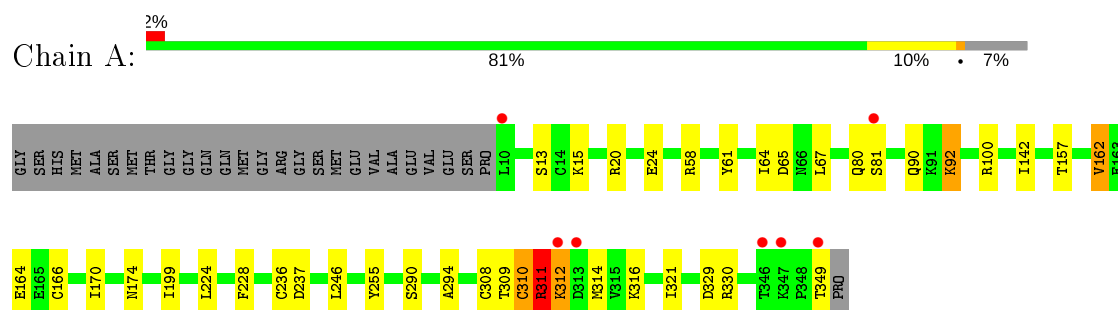
- Molecule 6 is water.

Mol	Chain	Residues	Atoms		ZeroOcc	AltConf
6	A	208	Total	O	0	0
			208	208		
6	B	207	Total	O	0	0
			207	207		

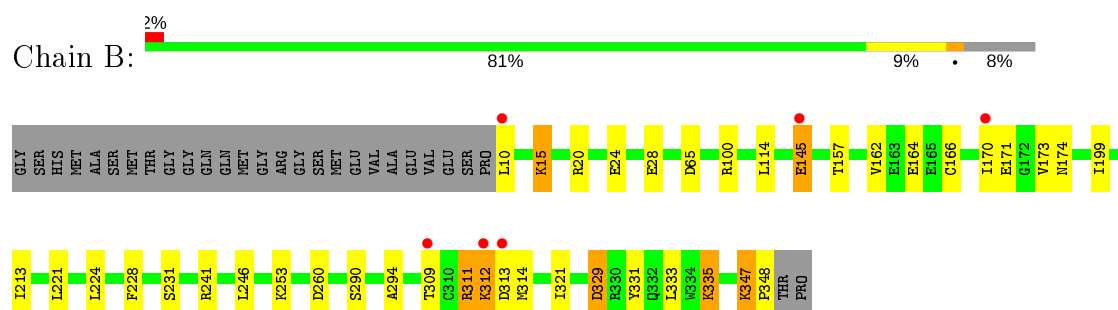
### 3 Residue-property plots [i](#)

These plots are drawn for all protein, RNA and DNA chains in the entry. The first graphic for a chain summarises the proportions of the various outlier classes displayed in the second graphic. The second graphic shows the sequence view annotated by issues in geometry and electron density. Residues are color-coded according to the number of geometric quality criteria for which they contain at least one outlier: green = 0, yellow = 1, orange = 2 and red = 3 or more. A red dot above a residue indicates a poor fit to the electron density ( $RSRZ > 2$ ). Stretches of 2 or more consecutive residues without any outlier are shown as a green connector. Residues present in the sample, but not in the model, are shown in grey.

- Molecule 1: Lysine-specific demethylase 4C



- Molecule 1: Lysine-specific demethylase 4C



## 4 Data and refinement statistics

Property	Value	Source
Space group	P 21 21 21	Depositor
Cell constants a, b, c, $\alpha$ , $\beta$ , $\gamma$	89.82Å 89.88Å 100.01Å 90.00° 90.00° 90.00°	Depositor
Resolution (Å)	66.82 – 1.90 44.91 – 1.90	Depositor EDS
% Data completeness (in resolution range)	99.1 (66.82-1.90) 99.1 (44.91-1.90)	Depositor EDS
$R_{merge}$	(Not available)	Depositor
$R_{sym}$	0.10	Depositor
$\langle I/\sigma(I) \rangle$ <sup>1</sup>	2.32 (at 1.89Å)	Xtriage
Refinement program	REFMAC 5.8.0069	Depositor
R, $R_{free}$	0.192 , 0.234 0.192 , 0.234	Depositor DCC
$R_{free}$ test set	3241 reflections (5.07%)	wwPDB-VP
Wilson B-factor (Å <sup>2</sup> )	19.6	Xtriage
Anisotropy	0.839	Xtriage
Bulk solvent $k_{sol}$ (e/Å <sup>3</sup> ), $B_{sol}$ (Å <sup>2</sup> )	0.35 , 41.6	EDS
L-test for twinning <sup>2</sup>	$\langle  L  \rangle = 0.51$ , $\langle L^2 \rangle = 0.34$	Xtriage
Estimated twinning fraction	0.000 for k,h,-l	Xtriage
$F_o, F_c$ correlation	0.96	EDS
Total number of atoms	6018	wwPDB-VP
Average B, all atoms (Å <sup>2</sup> )	26.0	wwPDB-VP

Xtriage's analysis on translational NCS is as follows: *The analyses of the Patterson function reveals a significant off-origin peak that is 50.08 % of the origin peak, indicating pseudo-translational symmetry. The chance of finding a peak of this or larger height randomly in a structure without pseudo-translational symmetry is equal to 6.8035e-05. The detected translational NCS is most likely also responsible for the elevated intensity ratio.*

<sup>1</sup> Intensities estimated from amplitudes.

<sup>2</sup> Theoretical values of  $\langle |L| \rangle$ ,  $\langle L^2 \rangle$  for acentric reflections are 0.5, 0.333 respectively for untwinned datasets, and 0.375, 0.2 for perfectly twinned datasets.

## 5 Model quality

### 5.1 Standard geometry

Bond lengths and bond angles in the following residue types are not validated in this section: 6X9, ZN, FE2, CL

The Z score for a bond length (or angle) is the number of standard deviations the observed value is removed from the expected value. A bond length (or angle) with  $|Z| > 5$  is considered an outlier worth inspection. RMSZ is the root-mean-square of all Z scores of the bond lengths (or angles).

Mol	Chain	Bond lengths		Bond angles	
		RMSZ	# $ Z  > 5$	RMSZ	# $ Z  > 5$
1	A	0.61	0/2871	0.72	3/3885 (0.1%)
1	B	0.59	0/2860	0.71	1/3871 (0.0%)
All	All	0.60	0/5731	0.71	4/7756 (0.1%)

Chiral center outliers are detected by calculating the chiral volume of a chiral center and verifying if the center is modelled as a planar moiety or with the opposite hand. A planarity outlier is detected by checking planarity of atoms in a peptide group, atoms in a mainchain group or atoms of a sidechain that are expected to be planar.

Mol	Chain	#Chirality outliers	#Planarity outliers
1	A	0	2
1	B	0	1
All	All	0	3

There are no bond length outliers.

All (4) bond angle outliers are listed below:

Mol	Chain	Res	Type	Atoms	Z	Observed(°)	Ideal(°)
1	B	329	ASP	CB-CG-OD1	7.21	124.79	118.30
1	A	330	ARG	NE-CZ-NH2	-6.09	117.25	120.30
1	A	329	ASP	CB-CG-OD1	5.92	123.62	118.30
1	A	330	ARG	NE-CZ-NH1	5.91	123.26	120.30

There are no chirality outliers.

All (3) planarity outliers are listed below:

Mol	Chain	Res	Type	Group
1	A	310	CYS	Mainchain
1	A	311	ARG	Peptide

*Continued on next page...*



*Continued from previous page...*

Mol	Chain	Res	Type	Group
1	B	309	THR	Peptide

## 5.2 Too-close contacts ⓘ

In the following table, the Non-H and H(model) columns list the number of non-hydrogen atoms and hydrogen atoms in the chain respectively. The H(added) column lists the number of hydrogen atoms added and optimized by MolProbity. The Clashes column lists the number of clashes within the asymmetric unit, whereas Symm-Clashes lists symmetry related clashes.

Mol	Chain	Non-H	H(model)	H(added)	Clashes	Symm-Clashes
1	A	2788	0	2711	35	0
1	B	2777	0	2693	36	0
2	A	1	0	0	0	0
2	B	1	0	0	0	0
3	A	1	0	0	0	0
3	B	1	0	0	0	0
4	A	16	0	0	0	0
4	B	16	0	0	0	0
5	A	1	0	0	0	0
5	B	1	0	0	0	0
6	A	208	0	0	11	0
6	B	207	0	0	8	0
All	All	6018	0	5404	71	0

The all-atom clashscore is defined as the number of clashes found per 1000 atoms (including hydrogen atoms). The all-atom clashscore for this structure is 6.

All (71) close contacts within the same asymmetric unit are listed below, sorted by their clash magnitude.

Atom-1	Atom-2	Interatomic distance (Å)	Clash overlap (Å)
1:A:170:ILE:HD11	1:A:174:ASN:OD1	1.37	1.24
1:A:15:LYS:HE3	6:A:671:HOH:O	1.53	1.08
1:B:170:ILE:HD11	1:B:174:ASN:OD1	1.64	0.97
1:A:170:ILE:HD11	1:A:174:ASN:CG	1.89	0.92
1:B:170:ILE:HD11	1:B:174:ASN:CG	1.89	0.92
1:A:311:ARG:HB2	1:A:314:MET:CE	2.01	0.90
1:A:170:ILE:CD1	1:A:174:ASN:OD1	2.24	0.86
1:A:15:LYS:CD	6:A:671:HOH:O	2.23	0.86
1:A:310:CYS:HB2	1:A:311:ARG:HD2	1.57	0.85
1:B:331:TYR:CZ	1:B:335:LYS:HE3	2.16	0.79

*Continued on next page...*

*Continued from previous page...*

Atom-1	Atom-2	Interatomic distance (Å)	Clash overlap (Å)
1:A:311:ARG:HB2	1:A:314:MET:HE2	1.64	0.78
1:A:236:CYS:HB2	1:A:310:CYS:SG	2.24	0.78
1:A:170:ILE:CD1	1:A:174:ASN:CG	2.57	0.73
1:A:65:ASP:OD1	1:A:100:ARG:NH1	2.22	0.72
1:A:311:ARG:HB2	1:A:314:MET:HE3	1.70	0.72
1:B:65:ASP:OD1	1:B:100:ARG:NH1	2.24	0.69
1:B:28:GLU:HB3	6:B:686:HOH:O	1.93	0.68
1:A:15:LYS:CE	6:A:671:HOH:O	2.18	0.65
1:B:20:ARG:NH1	6:B:501:HOH:O	2.24	0.64
1:A:92:LYS:HG3	6:A:627:HOH:O	1.97	0.64
1:A:90:GLN:NE2	6:A:503:HOH:O	2.31	0.62
1:A:65:ASP:CG	1:A:100:ARG:HH12	2.03	0.61
1:A:92:LYS:CG	6:A:627:HOH:O	2.48	0.61
1:B:170:ILE:HD12	1:B:173:VAL:HG22	1.84	0.59
1:B:15:LYS:HD2	1:B:260:ASP:OD2	2.02	0.59
1:B:65:ASP:CG	1:B:100:ARG:HH12	2.06	0.59
1:A:310:CYS:CB	1:A:311:ARG:HD2	2.32	0.57
1:B:311:ARG:HB2	1:B:314:MET:CE	2.34	0.57
1:B:199:ILE:O	1:B:290:SER:HB2	2.05	0.57
1:B:311:ARG:HB2	1:B:314:MET:HE2	1.85	0.57
1:A:312:LYS:HB2	1:A:312:LYS:NZ	2.19	0.57
1:B:347:LYS:HD3	1:B:348:PRO:HD3	1.86	0.56
1:B:321:ILE:HG22	6:B:587:HOH:O	2.06	0.56
1:B:246:LEU:N	1:B:246:LEU:HD12	2.20	0.56
1:A:13:SER:OG	1:A:15:LYS:HG2	2.06	0.55
1:A:20:ARG:NE	6:A:502:HOH:O	2.26	0.54
1:A:157:THR:HB	1:A:294:ALA:O	2.07	0.54
1:B:331:TYR:OH	1:B:335:LYS:HE3	2.07	0.54
1:B:241:ARG:HG2	6:B:538:HOH:O	2.09	0.53
1:A:199:ILE:O	1:A:290:SER:HB2	2.09	0.52
1:B:312:LYS:HD3	1:B:313:ASP:H	1.74	0.52
1:B:145:GLU:OE1	1:B:145:GLU:HA	2.09	0.52
1:B:213:ILE:HD13	1:B:221:LEU:HB2	1.92	0.50
1:A:349:THR:HG21	6:A:630:HOH:O	2.10	0.50
1:A:64:ILE:HD13	1:A:142:ILE:HD12	1.93	0.50
1:B:157:THR:HB	1:B:294:ALA:O	2.14	0.48
1:B:312:LYS:O	1:B:313:ASP:HB2	2.13	0.47
1:B:224:LEU:HD11	1:B:228:PHE:HE2	1.79	0.47
1:B:170:ILE:CD1	1:B:174:ASN:CG	2.75	0.47
1:B:15:LYS:HA	1:B:15:LYS:HD3	1.40	0.47
1:B:224:LEU:HD11	1:B:228:PHE:CE2	2.49	0.47

*Continued on next page...*

Continued from previous page...

Atom-1	Atom-2	Interatomic distance (Å)	Clash overlap (Å)
1:A:246:LEU:HD12	1:A:246:LEU:N	2.30	0.46
1:B:347:LYS:HD3	1:B:348:PRO:CD	2.45	0.46
1:A:20:ARG:NH1	6:A:508:HOH:O	2.42	0.46
1:B:162:VAL:O	1:B:166:CYS:HB2	2.16	0.45
1:A:228:PHE:HZ	1:A:255:TYR:CE2	2.34	0.45
1:A:92:LYS:HG2	6:A:627:HOH:O	2.14	0.45
1:B:170:ILE:O	1:B:171:GLU:HB2	2.16	0.45
1:A:312:LYS:HZ2	1:A:312:LYS:H	1.64	0.44
1:B:20:ARG:NH2	6:B:505:HOH:O	2.31	0.44
1:B:100:ARG:NH1	6:B:503:HOH:O	2.28	0.44
1:A:15:LYS:HA	1:A:15:LYS:HD2	1.75	0.44
1:A:162:VAL:O	1:A:166:CYS:HB2	2.20	0.42
1:A:224:LEU:HD11	1:A:228:PHE:CE2	2.54	0.42
1:B:347:LYS:HD3	1:B:347:LYS:HA	1.28	0.42
1:B:231:SER:HB2	6:B:605:HOH:O	2.20	0.42
1:B:231:SER:CB	6:B:605:HOH:O	2.69	0.41
1:B:15:LYS:HZ2	1:B:15:LYS:HG2	1.76	0.41
1:B:312:LYS:HD3	1:B:313:ASP:N	2.34	0.41
1:A:321:ILE:HG22	6:A:584:HOH:O	2.21	0.41
1:A:58:ARG:HD3	1:A:61:TYR:CD1	2.56	0.41

There are no symmetry-related clashes.

## 5.3 Torsion angles [i](#)

### 5.3.1 Protein backbone [i](#)

In the following table, the Percentiles column shows the percent Ramachandran outliers of the chain as a percentile score with respect to all X-ray entries followed by that with respect to entries of similar resolution.

The Analysed column shows the number of residues for which the backbone conformation was analysed, and the total number of residues.

Mol	Chain	Analysed	Favoured	Allowed	Outliers	Percentiles	
1	A	338/367 (92%)	330 (98%)	8 (2%)	0	100	100
1	B	337/367 (92%)	331 (98%)	6 (2%)	0	100	100
All	All	675/734 (92%)	661 (98%)	14 (2%)	0	100	100

There are no Ramachandran outliers to report.

### 5.3.2 Protein sidechains ⓘ

In the following table, the Percentiles column shows the percent sidechain outliers of the chain as a percentile score with respect to all X-ray entries followed by that with respect to entries of similar resolution.

The Analysed column shows the number of residues for which the sidechain conformation was analysed, and the total number of residues.

Mol	Chain	Analysed	Rotameric	Outliers	Percentiles	
1	A	299/319 (94%)	286 (96%)	13 (4%)	29	19
1	B	297/319 (93%)	284 (96%)	13 (4%)	28	19
All	All	596/638 (93%)	570 (96%)	26 (4%)	28	19

All (26) residues with a non-rotameric sidechain are listed below:

Mol	Chain	Res	Type
1	A	24	GLU
1	A	67	LEU
1	A	80	GLN
1	A	81	SER
1	A	92	LYS
1	A	162	VAL
1	A	164	GLU
1	A	237	ASP
1	A	308	CYS
1	A	309	THR
1	A	311	ARG
1	A	312	LYS
1	A	316	LYS
1	B	10	LEU
1	B	15	LYS
1	B	24	GLU
1	B	114	LEU
1	B	145	GLU
1	B	164	GLU
1	B	253	LYS
1	B	311	ARG
1	B	312	LYS
1	B	329	ASP
1	B	333	LEU
1	B	335	LYS
1	B	347	LYS

Some sidechains can be flipped to improve hydrogen bonding and reduce clashes. All (3) such sidechains are listed below:

Mol	Chain	Res	Type
1	A	226	GLN
1	B	74	GLN
1	B	226	GLN

### 5.3.3 RNA [i](#)

There are no RNA molecules in this entry.

## 5.4 Non-standard residues in protein, DNA, RNA chains [i](#)

There are no non-standard protein/DNA/RNA residues in this entry.

## 5.5 Carbohydrates [i](#)

There are no carbohydrates in this entry.

## 5.6 Ligand geometry [i](#)

Of 8 ligands modelled in this entry, 6 are monoatomic - leaving 2 for Mogul analysis.

In the following table, the Counts columns list the number of bonds (or angles) for which Mogul statistics could be retrieved, the number of bonds (or angles) that are observed in the model and the number of bonds (or angles) that are defined in the Chemical Component Dictionary. The Link column lists molecule types, if any, to which the group is linked. The Z score for a bond length (or angle) is the number of standard deviations the observed value is removed from the expected value. A bond length (or angle) with  $|Z| > 2$  is considered an outlier worth inspection. RMSZ is the root-mean-square of all Z scores of the bond lengths (or angles).

Mol	Type	Chain	Res	Link	Bond lengths			Bond angles		
					Counts	RMSZ	# Z  > 2	Counts	RMSZ	# Z  > 2
4	6X9	A	403	2	13,17,17	1.37	3 (23%)	8,25,25	1.56	2 (25%)
4	6X9	B	403	2	13,17,17	1.41	2 (15%)	8,25,25	1.64	2 (25%)

In the following table, the Chirals column lists the number of chiral outliers, the number of chiral centers analysed, the number of these observed in the model and the number defined in the Chemical Component Dictionary. Similar counts are reported in the Torsion and Rings columns. '-' means no outliers of that kind were identified.

Mol	Type	Chain	Res	Link	Chirals	Torsions	Rings
4	6X9	A	403	2	-	0/2/4/4	0/2/2/2
4	6X9	B	403	2	-	0/2/4/4	0/2/2/2

All (5) bond length outliers are listed below:

Mol	Chain	Res	Type	Atoms	Z	Observed(Å)	Ideal(Å)
4	A	403	6X9	C13-C5	2.78	1.55	1.50
4	B	403	6X9	C13-C5	2.74	1.55	1.50
4	A	403	6X9	C5-N4	2.26	1.35	1.32
4	B	403	6X9	C7-C3	-2.16	1.38	1.45
4	A	403	6X9	C14-C8	2.06	1.53	1.50

All (4) bond angle outliers are listed below:

Mol	Chain	Res	Type	Atoms	Z	Observed(°)	Ideal(°)
4	B	403	6X9	C14-C8-N9	3.18	126.52	119.75
4	B	403	6X9	C8-C7-C15	-2.96	123.08	127.33
4	A	403	6X9	C14-C8-N9	2.76	125.64	119.75
4	A	403	6X9	C8-C7-C15	-2.51	123.72	127.33

There are no chirality outliers.

There are no torsion outliers.

There are no ring outliers.

No monomer is involved in short contacts.

## 5.7 Other polymers [i](#)

There are no such residues in this entry.

## 5.8 Polymer linkage issues [i](#)

There are no chain breaks in this entry.

## 6 Fit of model and data [i](#)

### 6.1 Protein, DNA and RNA chains [i](#)

In the following table, the column labelled ‘#RSRZ> 2’ contains the number (and percentage) of RSRZ outliers, followed by percent RSRZ outliers for the chain as percentile scores relative to all X-ray entries and entries of similar resolution. The OWAB column contains the minimum, median, 95<sup>th</sup> percentile and maximum values of the occupancy-weighted average B-factor per residue. The column labelled ‘Q< 0.9’ lists the number of (and percentage) of residues with an average occupancy less than 0.9.

Mol	Chain	Analysed	<RSRZ>	#RSRZ>2	OWAB(Å <sup>2</sup> )	Q<0.9
1	A	340/367 (92%)	-0.08	7 (2%) 63 66	13, 23, 46, 102	0
1	B	339/367 (92%)	-0.11	6 (1%) 68 71	13, 23, 43, 90	0
All	All	679/734 (92%)	-0.09	13 (1%) 66 69	13, 23, 45, 102	0

All (13) RSRZ outliers are listed below:

Mol	Chain	Res	Type	RSRZ
1	B	313	ASP	5.2
1	A	10	LEU	4.1
1	A	312	LYS	3.4
1	B	312	LYS	3.4
1	B	309	THR	3.2
1	A	313	ASP	3.1
1	A	349	THR	2.8
1	B	10	LEU	2.8
1	A	346	THR	2.4
1	A	347	LYS	2.3
1	B	145	GLU	2.2
1	A	81	SER	2.1
1	B	170	ILE	2.0

### 6.2 Non-standard residues in protein, DNA, RNA chains [i](#)

There are no non-standard protein/DNA/RNA residues in this entry.

### 6.3 Carbohydrates [i](#)

There are no carbohydrates in this entry.

## 6.4 Ligands [i](#)

In the following table, the Atoms column lists the number of modelled atoms in the group and the number defined in the chemical component dictionary. The B-factors column lists the minimum, median, 95<sup>th</sup> percentile and maximum values of B factors of atoms in the group. The column labelled 'Q< 0.9' lists the number of atoms with occupancy less than 0.9.

Mol	Type	Chain	Res	Atoms	RSCC	RSR	B-factors(Å <sup>2</sup> )	Q<0.9
4	6X9	B	403	16/16	0.96	0.08	16,19,22,24	0
4	6X9	A	403	16/16	0.97	0.08	14,18,21,22	0
3	ZN	B	402	1/1	0.98	0.05	26,26,26,26	0
5	CL	B	404	1/1	0.99	0.09	18,18,18,18	0
3	ZN	A	402	1/1	0.99	0.06	26,26,26,26	0
2	FE2	B	401	1/1	0.99	0.06	14,14,14,14	0
5	CL	A	404	1/1	0.99	0.09	18,18,18,18	0
2	FE2	A	401	1/1	1.00	0.06	15,15,15,15	0

## 6.5 Other polymers [i](#)

There are no such residues in this entry.