



# Full wwPDB X-ray Structure Validation Report ⓘ

Jan 6, 2021 – 02:04 PM EST

PDB ID : 7KRC  
Title : Crystal Structure of HIV-1 Reverse Transcriptase in Complex with (E)-4-(3-chloro-5-(2-cyanovinyl)phenoxy)-3-(2-(2,4-dioxo-3,4-dihydropyrimidin-1(2H)-yl)ethoxy)phenyl sulfurofluoridate (JLJ709)  
Authors : Bertoletti, N.; Ippolito, J.A.; Jorgensen, W.L.; Anderson, K.S.  
Deposited on : 2020-11-19  
Resolution : 2.65 Å(reported)

This is a Full wwPDB X-ray Structure Validation Report for a publicly released PDB entry.

We welcome your comments at [validation@mail.wwpdb.org](mailto:validation@mail.wwpdb.org)

A user guide is available at

<https://www.wwpdb.org/validation/2017/XrayValidationReportHelp>

with specific help available everywhere you see the ⓘ symbol.

---

The following versions of software and data (see [references ⓘ](#)) were used in the production of this report:

MolProbity : 4.02b-467  
Mogul : 1.8.5 (274361), CSD as541be (2020)  
Xtriage (Phenix) : 1.13  
EDS : 2.16  
buster-report : 1.1.7 (2018)  
Percentile statistics : 20191225.v01 (using entries in the PDB archive December 25th 2019)  
Refmac : 5.8.0158  
CCP4 : 7.0.044 (Gargrove)  
Ideal geometry (proteins) : Engh & Huber (2001)  
Ideal geometry (DNA, RNA) : Parkinson et al. (1996)  
Validation Pipeline (wwPDB-VP) : 2.16

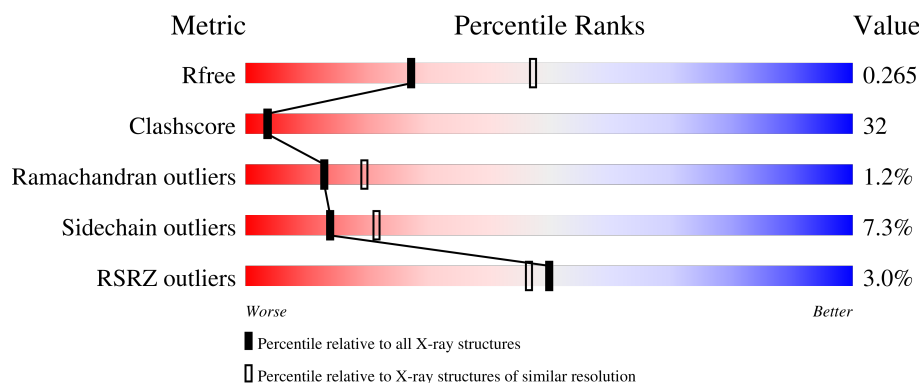
# 1 Overall quality at a glance

The following experimental techniques were used to determine the structure:

*X-RAY DIFFRACTION*



The reported resolution of this entry is 2.65 Å.

Percentile scores (ranging between 0-100) for global validation metrics of the entry are shown in the following graphic. The table shows the number of entries on which the scores are based.



Metric	Whole archive (#Entries)	Similar resolution (#Entries, resolution range(Å))
$R_{free}$	130704	1332 (2.68-2.64)
Clashscore	141614	1374 (2.68-2.64)
Ramachandran outliers	138981	1349 (2.68-2.64)
Sidechain outliers	138945	1349 (2.68-2.64)
RSRZ outliers	127900	1318 (2.68-2.64)

The table below summarises the geometric issues observed across the polymeric chains and their fit to the electron density. The red, orange, yellow and green segments of the lower bar indicate the fraction of residues that contain outliers for  $\geq 3$ , 2, 1 and 0 types of geometric quality criteria respectively. A grey segment represents the fraction of residues that are not modelled. The numeric value for each fraction is indicated below the corresponding segment, with a dot representing fractions  $\leq 5\%$ . The upper red bar (where present) indicates the fraction of residues that have poor fit to the electron density. The numeric value is given above the bar.

Mol	Chain	Length	Quality of chain
1	A	557	
2	B	428	

## 2 Entry composition

There are 3 unique types of molecules in this entry. The entry contains 7805 atoms, of which 15 are hydrogens and 0 are deuteriums.

In the tables below, the ZeroOcc column contains the number of atoms modelled with zero occupancy, the AltConf column contains the number of residues with at least one atom in alternate conformation and the Trace column contains the number of residues modelled with at most 2 atoms.

- Molecule 1 is a protein called HIV-1 REVERSE TRANSCRIPTASE, P66 SUBUNIT.

Mol	Chain	Residues	Atoms					ZeroOcc	AltConf	Trace
1	A	548	Total	C	N	O	S	0	0	0
			4416	2861	731	817	7			

There are 5 discrepancies between the modelled and reference sequences:

Chain	Residue	Modelled	Actual	Comment	Reference
A	-1	MET	-	expression tag	UNP P03366
A	0	VAL	-	expression tag	UNP P03366
A	172	ALA	LYS	engineered mutation	UNP P03366
A	173	ALA	LYS	engineered mutation	UNP P03366
A	280	SER	CYS	engineered mutation	UNP P03366

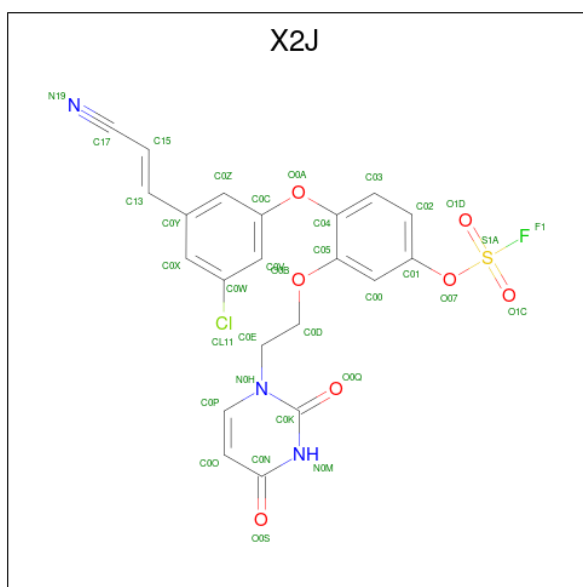
- Molecule 2 is a protein called HIV-1 REVERSE TRANSCRIPTASE, P51 SUBUNIT.

Mol	Chain	Residues	Atoms					ZeroOcc	AltConf	Trace
2	B	409	Total	C	N	O	S	0	0	0
			3341	2179	548	608	6			

There is a discrepancy between the modelled and reference sequences:

Chain	Residue	Modelled	Actual	Comment	Reference
B	280	SER	CYS	engineered mutation	UNP P03366

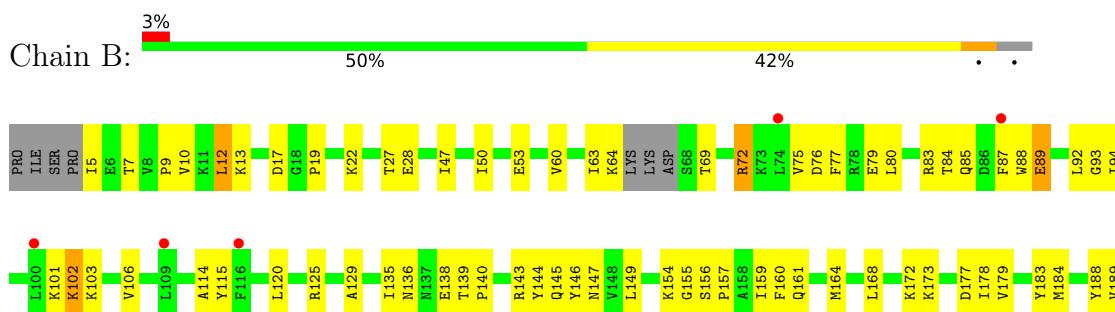
- Molecule 3 is 4-{3-chloro-5-[(E)-2-cyanoethenyl]phenoxy}-3-[2-(2,4-dioxo-3,4-dihydropyrimidin-1(2H)-yl)ethoxy]phenyl sulfurofluoridate (three-letter code: X2J) (formula: C<sub>21</sub>H<sub>15</sub>ClFN<sub>3</sub>O<sub>7</sub>S) (labeled as "Ligand of Interest" by depositor).

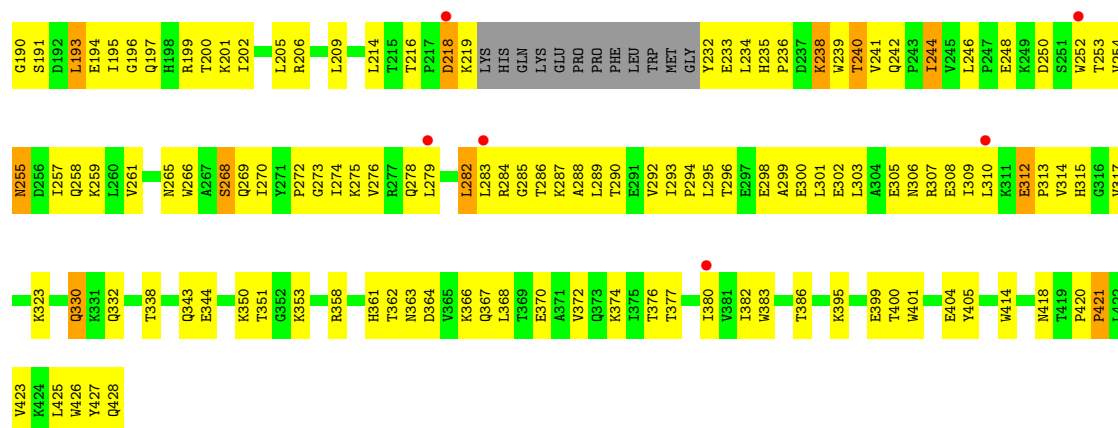


Mol	Chain	Residues	Atoms							ZeroOcc	AltConf
3	A	1	Total	C	Cl	H	N	O	S	0	0
			48	21	1	15	3	7	1		



- Molecule 1: HIV-1 REVERSE TRANSCRIPTASE, P66 SUBUNIT





## 4 Data and refinement statistics

Property	Value	Source
Space group	C 1 2 1	Depositor
Cell constants a, b, c, $\alpha$ , $\beta$ , $\gamma$	224.63Å 69.11Å 105.86Å 90.00° 105.27° 90.00°	Depositor
Resolution (Å)	57.47 – 2.65 108.35 – 2.47	Depositor EDS
% Data completeness (in resolution range)	99.2 (57.47-2.65) 98.7 (108.35-2.47)	Depositor EDS
$R_{merge}$	0.06	Depositor
$R_{sym}$	(Not available)	Depositor
$\langle I/\sigma(I) \rangle$ <sup>1</sup>	0.67 (at 2.45Å)	Xtriage
Refinement program	PHENIX 1.17.1_3660	Depositor
R, $R_{free}$	0.220 , 0.265 0.222 , 0.265	Depositor DCC
$R_{free}$ test set	2000 reflections (3.57%)	wwPDB-VP
Wilson B-factor (Å <sup>2</sup> )	103.5	Xtriage
Anisotropy	0.073	Xtriage
Bulk solvent $k_{sol}$ (e/Å <sup>3</sup> ), $B_{sol}$ (Å <sup>2</sup> )	0.30 , 77.4	EDS
L-test for twinning <sup>2</sup>	$\langle  L  \rangle = 0.50$ , $\langle L^2 \rangle = 0.34$	Xtriage
Estimated twinning fraction	No twinning to report.	Xtriage
$F_o, F_c$ correlation	0.96	EDS
Total number of atoms	7805	wwPDB-VP
Average B, all atoms (Å <sup>2</sup> )	109.0	wwPDB-VP

Xtriage's analysis on translational NCS is as follows: *The largest off-origin peak in the Patterson function is 4.28% of the height of the origin peak. No significant pseudotranslation is detected.*

<sup>1</sup>Intensities estimated from amplitudes.

<sup>2</sup>Theoretical values of  $\langle |L| \rangle$ ,  $\langle L^2 \rangle$  for acentric reflections are 0.5, 0.333 respectively for untwinned datasets, and 0.375, 0.2 for perfectly twinned datasets.

## 5 Model quality [i](#)

### 5.1 Standard geometry [i](#)

Bond lengths and bond angles in the following residue types are not validated in this section: X2J

The Z score for a bond length (or angle) is the number of standard deviations the observed value is removed from the expected value. A bond length (or angle) with  $|Z| > 5$  is considered an outlier worth inspection. RMSZ is the root-mean-square of all Z scores of the bond lengths (or angles).

Mol	Chain	Bond lengths		Bond angles	
		RMSZ	# $ Z  > 5$	RMSZ	# $ Z  > 5$
1	A	0.45	0/4532	0.58	2/6170 (0.0%)
2	B	0.49	0/3436	0.64	0/4676
All	All	0.47	0/7968	0.60	2/10846 (0.0%)

There are no bond length outliers.

All (2) bond angle outliers are listed below:

Mol	Chain	Res	Type	Atoms	Z	Observed(°)	Ideal(°)
1	A	186	ASP	CB-CG-OD1	5.91	123.62	118.30
1	A	349	LEU	CA-CB-CG	5.43	127.79	115.30

There are no chirality outliers.

There are no planarity outliers.

### 5.2 Too-close contacts [i](#)

In the following table, the Non-H and H(model) columns list the number of non-hydrogen atoms and hydrogen atoms in the chain respectively. The H(added) column lists the number of hydrogen atoms added and optimized by MolProbity. The Clashes column lists the number of clashes within the asymmetric unit, whereas Symm-Clashes lists symmetry-related clashes.

Mol	Chain	Non-H	H(model)	H(added)	Clashes	Symm-Clashes
1	A	4416	0	4411	296	0
2	B	3341	0	3346	228	0
3	A	33	15	0	0	0
All	All	7790	15	7757	492	0

The all-atom clashscore is defined as the number of clashes found per 1000 atoms (including hydrogen atoms). The all-atom clashscore for this structure is 32.



All (492) close contacts within the same asymmetric unit are listed below, sorted by their clash magnitude.

Atom-1	Atom-2	Interatomic distance (Å)	Clash overlap (Å)
1:A:54:ASN:HD21	1:A:129:ALA:HB2	1.19	1.02
2:B:254:VAL:HG23	2:B:283:LEU:HD22	1.41	1.02
2:B:85:GLN:HG3	2:B:154:LYS:HB3	1.42	0.97
2:B:282:LEU:HD21	2:B:295:LEU:HA	1.46	0.95
2:B:244:ILE:HB	2:B:310:LEU:HD21	1.50	0.94
2:B:120:LEU:HD23	2:B:125:ARG:HG2	1.48	0.94
1:A:512:LYS:NZ	1:A:513:SER:O	2.01	0.93
1:A:334:GLN:HG3	1:A:336:GLN:HE21	1.33	0.92
1:A:246:LEU:HD22	1:A:260:LEU:CD1	2.01	0.91
1:A:88:TRP:CE2	2:B:143:ARG:HD2	2.06	0.91
2:B:358:ARG:CB	2:B:361:HIS:HB3	1.99	0.91
1:A:135:ILE:H	1:A:135:ILE:HD12	1.34	0.90
2:B:194:GLU:OE1	2:B:196:GLY:N	2.05	0.90
1:A:21:VAL:HG11	1:A:59:PRO:HG3	1.52	0.89
1:A:543:GLY:HA3	2:B:283:LEU:O	1.72	0.89
1:A:171:PHE:HB2	1:A:208:HIS:HD1	1.37	0.88
1:A:254:VAL:HG13	1:A:289:LEU:HA	1.56	0.88
1:A:125:ARG:O	1:A:128:THR:HG22	1.73	0.87
2:B:323:LYS:NZ	2:B:344:GLU:OE1	2.08	0.87
1:A:79:GLU:HG3	1:A:83:ARG:HH12	1.38	0.86
2:B:303:LEU:HD11	2:B:307:ARG:HH21	1.41	0.86
2:B:206:ARG:NH1	2:B:216:THR:OG1	2.08	0.85
2:B:85:GLN:HA	2:B:88:TRP:HB2	1.58	0.85
1:A:260:LEU:HD21	1:A:303:LEU:HD21	1.59	0.85
2:B:254:VAL:HG23	2:B:283:LEU:CD2	2.08	0.84
2:B:254:VAL:CG1	2:B:289:LEU:HA	2.07	0.84
1:A:139:THR:HB	1:A:140:PRO:HD2	1.57	0.84
1:A:178:ILE:O	1:A:178:ILE:HG12	1.78	0.83
1:A:54:ASN:ND2	1:A:129:ALA:HB2	1.92	0.83
1:A:206:ARG:HH11	1:A:216:THR:HG23	1.43	0.83
1:A:317:VAL:CG1	1:A:347:LYS:HB3	2.08	0.83
1:A:65:LYS:HD3	1:A:72:ARG:HH12	1.43	0.83
1:A:494:ASN:HD22	2:B:289:LEU:HD12	1.44	0.82
1:A:317:VAL:HG13	1:A:347:LYS:HB3	1.61	0.82
2:B:279:LEU:HD23	2:B:299:ALA:HB1	1.62	0.82
2:B:254:VAL:CG2	2:B:283:LEU:HD22	2.10	0.82
1:A:334:GLN:HG3	1:A:336:GLN:NE2	1.96	0.81
2:B:282:LEU:CD2	2:B:295:LEU:HA	2.11	0.80
2:B:252:TRP:NE1	2:B:295:LEU:HD11	1.96	0.80
2:B:312:GLU:HB3	2:B:313:PRO:HD2	1.64	0.80

*Continued on next page...*

*Continued from previous page...*

Atom-1	Atom-2	Interatomic distance (Å)	Clash overlap (Å)
1:A:195:ILE:H	1:A:195:ILE:HD12	1.45	0.80
2:B:254:VAL:HG12	2:B:289:LEU:O	1.82	0.79
2:B:312:GLU:HB3	2:B:313:PRO:CD	2.12	0.79
1:A:21:VAL:HG11	1:A:59:PRO:CG	2.13	0.78
1:A:134:SER:OG	1:A:140:PRO:O	2.02	0.77
1:A:171:PHE:HB2	1:A:208:HIS:ND1	2.00	0.76
2:B:248:GLU:HG2	2:B:307:ARG:HH12	1.50	0.76
2:B:366:LYS:O	2:B:370:GLU:HG3	1.86	0.76
1:A:441:TYR:CE2	1:A:544:GLY:HA3	2.22	0.75
2:B:257:ILE:O	2:B:261:VAL:HG23	1.85	0.75
2:B:282:LEU:HD22	2:B:296:THR:HG23	1.68	0.75
1:A:132:ILE:HG13	1:A:142:ILE:HB	1.69	0.75
1:A:254:VAL:CG2	1:A:283:LEU:HD13	2.17	0.74
1:A:498:ASP:HB2	1:A:538:ALA:HA	1.70	0.74
1:A:79:GLU:O	1:A:83:ARG:NH1	2.20	0.73
2:B:10:VAL:HG22	2:B:88:TRP:CH2	2.23	0.73
1:A:494:ASN:HB3	2:B:289:LEU:HD12	1.71	0.72
2:B:85:GLN:HG3	2:B:154:LYS:CB	2.19	0.72
2:B:274:ILE:HA	2:B:306:ASN:OD1	1.89	0.72
1:A:22:LYS:HD2	1:A:24:TRP:NE1	2.05	0.72
1:A:447:ASN:OD1	1:A:450:THR:HG23	1.90	0.72
1:A:94:ILE:HG22	1:A:183:TYR:HE1	1.53	0.72
1:A:441:TYR:O	1:A:548:VAL:HG21	1.90	0.71
1:A:50:ILE:O	1:A:143:ARG:HB2	1.91	0.71
1:A:116:PHE:HE2	1:A:146:TYR:HE1	1.39	0.71
2:B:244:ILE:HB	2:B:310:LEU:CD2	2.20	0.71
1:A:533:LEU:HD13	1:A:534:ALA:H	1.55	0.71
2:B:303:LEU:O	2:B:307:ARG:HB2	1.90	0.71
1:A:3:SER:HB3	1:A:5:ILE:HD12	1.74	0.70
2:B:366:LYS:HD2	2:B:405:TYR:CE2	2.28	0.69
2:B:303:LEU:HD11	2:B:307:ARG:NH2	2.07	0.69
1:A:361:HIS:ND1	1:A:513:SER:OG	2.23	0.69
1:A:364:ASP:HB3	1:A:423:VAL:HG13	1.74	0.69
2:B:265:ASN:O	2:B:268:SER:OG	2.09	0.68
1:A:63:ILE:HG22	1:A:64:LYS:H	1.58	0.68
2:B:282:LEU:HD21	2:B:294:PRO:O	1.93	0.68
1:A:408:ALA:HB1	2:B:364:ASP:HB3	1.76	0.68
1:A:254:VAL:O	1:A:258:GLN:HG3	1.94	0.68
1:A:84:THR:HG21	1:A:153:TRP:HE1	1.59	0.67
1:A:50:ILE:HG12	1:A:143:ARG:HB3	1.76	0.67
1:A:17:ASP:O	1:A:83:ARG:HD3	1.94	0.67

*Continued on next page...*

*Continued from previous page...*

Atom-1	Atom-2	Interatomic distance (Å)	Clash overlap (Å)
1:A:27:THR:HG23	1:A:30:LYS:HD2	1.75	0.67
2:B:160:PHE:HE2	2:B:164:MET:HE1	1.58	0.67
2:B:282:LEU:HD22	2:B:296:THR:H	1.60	0.67
1:A:90:VAL:HG13	1:A:161:GLN:NE2	2.10	0.67
1:A:65:LYS:HB3	1:A:68:SER:HB3	1.76	0.67
1:A:265:ASN:OD1	1:A:353:LYS:NZ	2.15	0.66
1:A:532:TYR:CE1	1:A:534:ALA:HB2	2.31	0.66
2:B:143:ARG:HG2	2:B:143:ARG:HH11	1.61	0.66
1:A:65:LYS:HD3	1:A:72:ARG:NH1	2.10	0.66
1:A:271:TYR:CE2	1:A:314:VAL:HG12	2.31	0.66
2:B:279:LEU:CD2	2:B:299:ALA:HB1	2.26	0.66
1:A:175:ASN:HB3	1:A:178:ILE:HD13	1.77	0.65
1:A:3:SER:CB	1:A:5:ILE:HD12	2.26	0.65
1:A:246:LEU:HD22	1:A:260:LEU:HD12	1.75	0.65
1:A:57:ASN:ND2	1:A:131:THR:OG1	2.30	0.65
2:B:332:GLN:HG3	2:B:338:THR:HG23	1.76	0.65
2:B:12:LEU:HD22	2:B:84:THR:HG22	1.79	0.65
1:A:410:TRP:HD1	1:A:412:PRO:HD3	1.62	0.65
1:A:79:GLU:HG3	1:A:83:ARG:NH1	2.10	0.65
1:A:472:THR:HG22	1:A:476:LYS:HD3	1.78	0.65
2:B:202:ILE:O	2:B:206:ARG:HG3	1.97	0.65
2:B:79:GLU:HG3	2:B:83:ARG:NH1	2.12	0.64
1:A:131:THR:CG2	1:A:143:ARG:HD3	2.26	0.64
1:A:210:LEU:O	1:A:210:LEU:HD12	1.97	0.64
2:B:363:ASN:O	2:B:367:GLN:HG3	1.97	0.64
1:A:253:THR:HG23	1:A:256:ASP:H	1.63	0.64
1:A:19:PRO:O	1:A:56:TYR:HB3	1.98	0.64
2:B:254:VAL:HG11	2:B:289:LEU:HA	1.80	0.64
1:A:88:TRP:CZ2	2:B:143:ARG:HD2	2.33	0.63
1:A:277:ARG:HB2	1:A:336:GLN:OE1	1.98	0.63
2:B:423:VAL:HG23	2:B:427:TYR:HE2	1.62	0.63
1:A:460:ASN:ND2	2:B:288:ALA:HB2	2.14	0.63
2:B:84:THR:OG1	2:B:85:GLN:N	2.29	0.63
1:A:21:VAL:CG1	1:A:59:PRO:HG3	2.28	0.63
1:A:88:TRP:CD2	2:B:143:ARG:HD2	2.33	0.63
2:B:238:LYS:HB3	2:B:238:LYS:NZ	2.13	0.62
1:A:398:TRP:CH2	1:A:411:ILE:HG23	2.34	0.62
1:A:320:ASP:OD2	1:A:323:LYS:HD2	2.00	0.62
2:B:252:TRP:CD1	2:B:295:LEU:HD11	2.34	0.62
1:A:229:TRP:CE3	1:A:234:LEU:HD11	2.35	0.62
2:B:275:LYS:O	2:B:306:ASN:ND2	2.33	0.62

*Continued on next page...*

*Continued from previous page...*

Atom-1	Atom-2	Interatomic distance (Å)	Clash overlap (Å)
1:A:35:VAL:O	1:A:39:THR:HG23	1.99	0.62
1:A:533:LEU:HD13	1:A:534:ALA:N	2.15	0.61
1:A:8:VAL:O	1:A:121:ASP:HB2	2.00	0.61
1:A:167:ILE:O	1:A:170:PRO:HD2	2.00	0.61
2:B:254:VAL:HG11	2:B:288:ALA:O	1.99	0.61
1:A:298:GLU:H	1:A:298:GLU:CD	2.02	0.61
1:A:516:GLU:HA	1:A:519:ASN:HD22	1.65	0.61
1:A:317:VAL:HG23	1:A:349:LEU:HD13	1.83	0.61
2:B:358:ARG:CB	2:B:362:THR:HG23	2.30	0.61
1:A:453:GLY:O	1:A:469:LEU:N	2.34	0.61
2:B:248:GLU:HG2	2:B:307:ARG:NH1	2.15	0.61
2:B:114:ALA:HB2	2:B:214:LEU:HD13	1.82	0.60
2:B:244:ILE:CB	2:B:310:LEU:HD21	2.27	0.60
2:B:218:ASP:N	2:B:218:ASP:OD1	2.31	0.60
1:A:408:ALA:HA	2:B:364:ASP:OD2	2.02	0.60
2:B:242:GLN:HE21	2:B:242:GLN:HA	1.66	0.60
2:B:196:GLY:O	2:B:200:THR:HG23	2.01	0.60
2:B:274:ILE:O	2:B:275:LYS:HE2	2.02	0.60
2:B:395:LYS:HE3	2:B:399:GLU:OE2	2.02	0.60
2:B:218:ASP:O	2:B:219:LYS:HD2	2.02	0.60
2:B:282:LEU:HG	2:B:293:ILE:CG2	2.31	0.60
1:A:130:PHE:O	1:A:131:THR:HG23	2.02	0.59
2:B:193:LEU:HD13	2:B:197:GLN:OE1	2.02	0.59
1:A:183:TYR:CD2	1:A:184:MET:HG3	2.37	0.59
1:A:105:SER:HB2	1:A:198:HIS:CE1	2.36	0.59
1:A:382:ILE:HA	2:B:136:ASN:ND2	2.18	0.59
2:B:244:ILE:O	2:B:310:LEU:HD21	2.03	0.59
1:A:229:TRP:O	1:A:232:TYR:HB2	2.01	0.59
2:B:155:GLY:O	2:B:159:ILE:HG13	2.02	0.59
1:A:50:ILE:CG1	1:A:143:ARG:HB3	2.32	0.59
1:A:260:LEU:HD21	1:A:303:LEU:CD2	2.32	0.59
1:A:382:ILE:HG23	2:B:136:ASN:HD21	1.67	0.59
2:B:157:PRO:HG3	2:B:184:MET:HA	1.84	0.59
2:B:282:LEU:HD13	2:B:296:THR:CG2	2.33	0.59
2:B:139:THR:HB	2:B:140:PRO:HD2	1.85	0.58
1:A:53:GLU:CD	1:A:53:GLU:H	2.06	0.58
1:A:254:VAL:HG21	1:A:283:LEU:HD13	1.84	0.58
1:A:203:GLU:OE2	1:A:207:GLN:NE2	2.35	0.58
1:A:229:TRP:HE3	1:A:234:LEU:HD11	1.67	0.58
2:B:168:LEU:O	2:B:172:LYS:HG2	2.03	0.58
2:B:255:ASN:O	2:B:258:GLN:N	2.33	0.58

*Continued on next page...*

*Continued from previous page...*

Atom-1	Atom-2	Interatomic distance (Å)	Clash overlap (Å)
1:A:54:ASN:O	1:A:143:ARG:NH2	2.37	0.58
2:B:234:LEU:HD11	2:B:377:THR:CG2	2.34	0.58
1:A:542:ILE:HD12	1:A:542:ILE:H	1.68	0.58
2:B:423:VAL:O	2:B:423:VAL:HG23	2.04	0.58
2:B:143:ARG:HG2	2:B:143:ARG:NH1	2.19	0.58
2:B:292:VAL:O	2:B:293:ILE:HG12	2.04	0.57
2:B:241:VAL:HG13	2:B:351:THR:HG23	1.86	0.57
2:B:136:ASN:HB3	2:B:138:GLU:HG3	1.86	0.57
2:B:235:HIS:HB2	2:B:238:LYS:HE2	1.86	0.57
1:A:284:ARG:HH22	1:A:357:MET:CE	2.18	0.57
2:B:248:GLU:CG	2:B:307:ARG:HH12	2.16	0.57
1:A:317:VAL:HG11	1:A:347:LYS:HB3	1.86	0.57
1:A:277:ARG:HB2	1:A:336:GLN:CD	2.25	0.57
1:A:494:ASN:ND2	2:B:289:LEU:HD12	2.18	0.57
1:A:324:ASP:OD2	1:A:388:LYS:HE3	2.05	0.57
1:A:56:TYR:O	1:A:129:ALA:HB3	2.05	0.57
2:B:270:ILE:O	2:B:272:PRO:HD3	2.05	0.57
1:A:410:TRP:CD1	1:A:412:PRO:HD3	2.40	0.56
2:B:236:PRO:HA	2:B:239:TRP:CD2	2.39	0.56
1:A:186:ASP:HB3	1:A:188:TYR:CE1	2.40	0.56
2:B:253:THR:HA	2:B:292:VAL:HA	1.87	0.56
2:B:362:THR:HG22	2:B:366:LYS:NZ	2.20	0.56
2:B:255:ASN:HD21	2:B:259:LYS:HE2	1.70	0.56
2:B:53:GLU:OE1	2:B:53:GLU:N	2.34	0.56
1:A:116:PHE:O	1:A:148:VAL:HG11	2.06	0.56
1:A:254:VAL:HG23	1:A:283:LEU:HD13	1.86	0.56
2:B:232:TYR:CE2	2:B:234:LEU:HD21	2.41	0.56
1:A:206:ARG:NH1	1:A:216:THR:HG23	2.19	0.56
1:A:377:THR:O	1:A:381:VAL:HG23	2.05	0.56
1:A:452:LEU:CD2	1:A:470:THR:HG22	2.36	0.56
1:A:539:HIS:H	1:A:545:ASN:HD21	1.53	0.56
1:A:451:LYS:O	1:A:471:ASN:N	2.38	0.55
2:B:254:VAL:O	2:B:258:GLN:HG3	2.06	0.55
1:A:283:LEU:O	1:A:283:LEU:HD12	2.06	0.55
1:A:54:ASN:HD21	1:A:129:ALA:CB	2.08	0.55
2:B:282:LEU:HD21	2:B:295:LEU:CA	2.29	0.55
2:B:244:ILE:CG2	2:B:310:LEU:HD11	2.36	0.55
1:A:254:VAL:HG13	1:A:289:LEU:CA	2.33	0.55
1:A:52:PRO:HD2	1:A:53:GLU:OE1	2.05	0.55
1:A:547:GLN:OE1	2:B:286:THR:HG22	2.06	0.55
1:A:171:PHE:HB2	1:A:208:HIS:CE1	2.42	0.55

*Continued on next page...*

*Continued from previous page...*

Atom-1	Atom-2	Interatomic distance (Å)	Clash overlap (Å)
1:A:116:PHE:HA	1:A:148:VAL:HG21	1.89	0.55
2:B:423:VAL:HB	2:B:426:TRP:HE3	1.72	0.55
2:B:428:GLN:HA	2:B:428:GLN:OE1	2.05	0.55
1:A:279:LEU:HD11	1:A:303:LEU:HD23	1.88	0.55
2:B:63:ILE:HD11	2:B:72:ARG:HD3	1.87	0.55
1:A:406:TRP:CE2	2:B:420:PRO:HB3	2.42	0.55
1:A:57:ASN:HD22	1:A:143:ARG:NH1	2.05	0.54
1:A:516:GLU:HA	1:A:519:ASN:ND2	2.22	0.54
1:A:105:SER:HB2	1:A:198:HIS:ND1	2.22	0.54
2:B:252:TRP:HE1	2:B:295:LEU:HD11	1.66	0.54
1:A:281:LYS:O	1:A:284:ARG:HB2	2.08	0.54
1:A:303:LEU:O	1:A:307:ARG:HG3	2.07	0.54
2:B:302:GLU:O	2:B:306:ASN:HB2	2.06	0.54
1:A:277:ARG:HD2	1:A:334:GLN:HB2	1.89	0.54
2:B:183:TYR:CD2	2:B:380:ILE:HD13	2.43	0.54
2:B:382:ILE:HG22	2:B:383:TRP:CD2	2.42	0.54
1:A:498:ASP:HB2	1:A:538:ALA:CA	2.37	0.54
2:B:282:LEU:CD2	2:B:296:THR:H	2.21	0.54
1:A:515:SER:HB3	1:A:518:VAL:HG23	1.89	0.54
2:B:17:ASP:O	2:B:83:ARG:HD3	2.08	0.54
2:B:87:PHE:O	2:B:88:TRP:CD1	2.61	0.54
1:A:441:TYR:CD2	1:A:544:GLY:HA3	2.43	0.54
2:B:244:ILE:HB	2:B:310:LEU:CG	2.37	0.54
2:B:273:GLY:O	2:B:309:ILE:HD13	2.08	0.54
2:B:115:TYR:HB3	2:B:149:LEU:HB2	1.90	0.53
1:A:116:PHE:HA	1:A:148:VAL:CG2	2.38	0.53
2:B:368:LEU:O	2:B:372:VAL:HG23	2.08	0.53
2:B:376:THR:HG23	2:B:386:THR:HG22	1.90	0.53
1:A:382:ILE:HA	2:B:136:ASN:HD22	1.72	0.53
1:A:474:ASN:O	1:A:478:GLU:HG3	2.08	0.53
1:A:441:TYR:O	1:A:548:VAL:HG11	2.07	0.53
1:A:139:THR:HB	1:A:140:PRO:CD	2.35	0.53
2:B:275:LYS:H	2:B:306:ASN:ND2	2.06	0.53
1:A:49:LYS:HA	1:A:143:ARG:O	2.09	0.53
1:A:398:TRP:CZ3	1:A:411:ILE:HG23	2.44	0.53
1:A:296:THR:HG23	1:A:299:ALA:HB3	1.89	0.53
1:A:434:ILE:HD13	1:A:530:LYS:HB2	1.90	0.52
2:B:323:LYS:HB2	2:B:343:GLN:NE2	2.25	0.52
1:A:102:LYS:O	1:A:103:LYS:HD3	2.08	0.52
1:A:274:ILE:CD1	1:A:309:ILE:HG21	2.40	0.52
2:B:94:ILE:HG12	2:B:161:GLN:NE2	2.24	0.52

*Continued on next page...*

*Continued from previous page...*

Atom-1	Atom-2	Interatomic distance (Å)	Clash overlap (Å)
1:A:128:THR:CG2	1:A:146:TYR:H	2.23	0.52
1:A:282:LEU:HD21	1:A:296:THR:CG2	2.40	0.52
1:A:308:GLU:OE1	1:A:311:LYS:NZ	2.40	0.52
2:B:292:VAL:HG12	2:B:293:ILE:N	2.24	0.52
1:A:128:THR:HG21	1:A:146:TYR:H	1.74	0.52
2:B:282:LEU:HD13	2:B:296:THR:HG23	1.92	0.52
1:A:406:TRP:CD1	2:B:420:PRO:HB3	2.44	0.52
1:A:252:TRP:CD1	1:A:295:LEU:HD22	2.45	0.52
1:A:458:VAL:HB	1:A:548:VAL:CG2	2.40	0.52
2:B:189:VAL:O	2:B:189:VAL:HG22	2.09	0.51
2:B:257:ILE:HG22	2:B:283:LEU:HD11	1.91	0.51
2:B:106:VAL:HG22	2:B:190:GLY:HA3	1.91	0.51
1:A:10:VAL:HG12	1:A:124:PHE:CD1	2.46	0.51
1:A:195:ILE:H	1:A:195:ILE:CD1	2.20	0.51
1:A:117:SER:HB3	1:A:214:LEU:HD23	1.91	0.51
1:A:52:PRO:HD2	1:A:53:GLU:CD	2.31	0.51
1:A:47:ILE:HD12	1:A:144:TYR:CE1	2.46	0.51
1:A:435:VAL:HG13	2:B:290:THR:HG21	1.92	0.51
1:A:440:PHE:CZ	1:A:489:SER:HB3	2.46	0.51
2:B:314:VAL:HG12	2:B:315:HIS:N	2.26	0.51
2:B:400:THR:HG22	2:B:401:TRP:CD1	2.46	0.51
2:B:7:THR:O	2:B:9:PRO:HD3	2.11	0.51
1:A:431:LYS:HG3	1:A:432:GLU:HG2	1.93	0.51
1:A:533:LEU:CD1	1:A:534:ALA:N	2.74	0.50
2:B:206:ARG:CZ	2:B:206:ARG:HB3	2.40	0.50
2:B:308:GLU:C	2:B:310:LEU:H	2.14	0.50
1:A:439:THR:HG22	1:A:441:TYR:CE1	2.46	0.50
1:A:22:LYS:HD2	1:A:24:TRP:CD1	2.46	0.50
2:B:69:THR:O	2:B:69:THR:HG22	2.11	0.50
1:A:494:ASN:CB	2:B:289:LEU:HD12	2.41	0.50
2:B:28:GLU:HB2	2:B:135:ILE:HD11	1.93	0.50
2:B:275:LYS:H	2:B:306:ASN:HD21	1.59	0.50
1:A:515:SER:HB3	1:A:518:VAL:CG2	2.42	0.50
1:A:52:PRO:HD2	1:A:53:GLU:OE2	2.11	0.50
1:A:21:VAL:HG11	1:A:59:PRO:CD	2.41	0.50
1:A:384:GLY:O	2:B:27:THR:HG23	2.11	0.50
2:B:183:TYR:HB3	2:B:188:TYR:HE1	1.77	0.50
2:B:242:GLN:NE2	2:B:242:GLN:HA	2.26	0.50
1:A:235:HIS:HB2	1:A:238:LYS:HG2	1.94	0.50
1:A:398:TRP:CD1	1:A:402:TRP:HE3	2.30	0.49
1:A:491:LEU:O	1:A:529:GLU:HB2	2.13	0.49

*Continued on next page...*



*Continued from previous page...*

Atom-1	Atom-2	Interatomic distance (Å)	Clash overlap (Å)
1:A:501:TYR:CE2	1:A:505:ILE:HD11	2.47	0.49
2:B:238:LYS:O	2:B:240:THR:HG22	2.12	0.49
1:A:296:THR:HG23	1:A:299:ALA:CB	2.42	0.49
2:B:10:VAL:HA	2:B:88:TRP:CZ2	2.47	0.49
2:B:76:ASP:OD1	2:B:76:ASP:C	2.51	0.49
1:A:33:ALA:O	1:A:37:ILE:HD13	2.12	0.49
1:A:390:LYS:O	1:A:391:LEU:HD23	2.11	0.49
2:B:234:LEU:HD11	2:B:377:THR:HG21	1.93	0.49
1:A:183:TYR:CE2	1:A:184:MET:HG3	2.48	0.49
1:A:47:ILE:HD12	1:A:144:TYR:CD1	2.46	0.49
1:A:454:LYS:HD2	1:A:552:VAL:HA	1.95	0.49
2:B:423:VAL:HG23	2:B:427:TYR:CE2	2.46	0.49
2:B:282:LEU:HD11	2:B:294:PRO:O	2.12	0.49
1:A:21:VAL:HG11	1:A:59:PRO:HD3	1.94	0.49
2:B:10:VAL:HA	2:B:88:TRP:HZ2	1.78	0.48
1:A:65:LYS:HB2	1:A:72:ARG:NH1	2.28	0.48
2:B:344:GLU:HA	2:B:344:GLU:OE2	2.13	0.48
2:B:330:GLN:HG2	2:B:338:THR:OG1	2.14	0.48
2:B:50:ILE:HG21	2:B:145:GLN:HB3	1.95	0.48
1:A:303:LEU:HD13	1:A:303:LEU:O	2.14	0.48
2:B:63:ILE:O	2:B:64:LYS:HG2	2.12	0.48
2:B:84:THR:O	2:B:87:PHE:N	2.44	0.48
2:B:423:VAL:HB	2:B:426:TRP:CE3	2.48	0.48
2:B:257:ILE:HB	2:B:283:LEU:HD21	1.95	0.48
1:A:432:GLU:OE2	1:A:432:GLU:HA	2.13	0.47
1:A:473:THR:O	1:A:477:THR:HG23	2.14	0.47
2:B:214:LEU:N	2:B:214:LEU:HD23	2.29	0.47
2:B:332:GLN:CG	2:B:338:THR:HG23	2.43	0.47
1:A:254:VAL:CG1	1:A:289:LEU:HA	2.37	0.47
1:A:342:TYR:HB3	1:A:348:ASN:HA	1.95	0.47
1:A:94:ILE:HG22	1:A:183:TYR:CE1	2.42	0.47
2:B:87:PHE:C	2:B:88:TRP:CD1	2.87	0.47
1:A:30:LYS:HG2	1:A:71:TRP:CZ3	2.49	0.47
2:B:266:TRP:O	2:B:269:GLN:HG3	2.14	0.47
1:A:116:PHE:HD2	1:A:148:VAL:HG21	1.79	0.47
1:A:135:ILE:H	1:A:135:ILE:CD1	2.12	0.47
1:A:255:ASN:HB2	1:A:289:LEU:HB3	1.97	0.47
1:A:274:ILE:CD1	1:A:274:ILE:N	2.77	0.47
1:A:3:SER:CB	1:A:5:ILE:CD1	2.92	0.47
1:A:361:HIS:CD2	1:A:361:HIS:O	2.67	0.47
1:A:382:ILE:HG23	2:B:136:ASN:ND2	2.30	0.47

*Continued on next page...*



*Continued from previous page...*

Atom-1	Atom-2	Interatomic distance (Å)	Clash overlap (Å)
2:B:87:PHE:C	2:B:88:TRP:HD1	2.18	0.47
1:A:410:TRP:CD1	1:A:411:ILE:N	2.83	0.47
1:A:295:LEU:HD23	1:A:300:GLU:OE1	2.15	0.47
1:A:494:ASN:HB3	2:B:289:LEU:CD1	2.41	0.47
1:A:246:LEU:HD22	1:A:260:LEU:HD11	1.93	0.47
2:B:244:ILE:HB	2:B:310:LEU:HD11	1.96	0.47
1:A:115:TYR:CD2	1:A:156:SER:HB3	2.50	0.46
1:A:90:VAL:O	1:A:91:GLN:C	2.54	0.46
2:B:205:LEU:O	2:B:209:LEU:HG	2.15	0.46
1:A:406:TRP:CD2	2:B:420:PRO:HB3	2.50	0.46
1:A:85:GLN:HE22	2:B:53:GLU:HB2	1.80	0.46
2:B:382:ILE:HG22	2:B:383:TRP:CE2	2.50	0.46
2:B:240:THR:OG1	2:B:241:VAL:N	2.49	0.46
1:A:5:ILE:HG12	1:A:167:ILE:HD11	1.97	0.46
1:A:225:PRO:HA	1:A:226:PRO:C	2.36	0.46
1:A:64:LYS:N	1:A:64:LYS:HD2	2.30	0.46
1:A:265:ASN:HA	1:A:353:LYS:NZ	2.30	0.46
2:B:362:THR:HG22	2:B:366:LYS:HZ3	1.79	0.46
1:A:116:PHE:CE1	1:A:151:GLN:HG2	2.51	0.46
1:A:325:LEU:HD21	1:A:383:TRP:CE3	2.51	0.46
1:A:460:ASN:HD22	2:B:288:ALA:HB2	1.81	0.46
2:B:160:PHE:CE2	2:B:164:MET:HE1	2.47	0.46
1:A:458:VAL:HG22	1:A:464:GLN:HG2	1.98	0.46
1:A:97:PRO:HG2	1:A:232:TYR:CD2	2.51	0.46
1:A:258:GLN:HE21	1:A:283:LEU:HD21	1.80	0.45
1:A:410:TRP:HD1	1:A:412:PRO:CD	2.26	0.45
1:A:541:GLY:O	1:A:542:ILE:C	2.54	0.45
2:B:189:VAL:HG22	2:B:202:ILE:HD11	1.98	0.45
2:B:189:VAL:CG2	2:B:189:VAL:O	2.64	0.45
1:A:116:PHE:CZ	1:A:151:GLN:HG2	2.51	0.45
1:A:117:SER:CB	1:A:214:LEU:HD23	2.46	0.45
2:B:103:LYS:HE3	2:B:179:VAL:HG23	1.97	0.45
1:A:411:ILE:N	1:A:411:ILE:HD12	2.31	0.45
1:A:257:ILE:HD13	1:A:282:LEU:HD12	1.98	0.45
2:B:101:LYS:O	2:B:236:PRO:HG2	2.17	0.45
1:A:116:PHE:HD2	1:A:148:VAL:CG2	2.29	0.45
1:A:3:SER:HB2	1:A:5:ILE:CD1	2.46	0.45
1:A:65:LYS:O	1:A:65:LYS:HG3	2.17	0.45
2:B:125:ARG:HD3	2:B:147:ASN:HD22	1.81	0.45
2:B:178:ILE:HD11	2:B:201:LYS:HG2	1.99	0.45
1:A:333:GLY:O	1:A:335:GLY:N	2.48	0.45

*Continued on next page...*

*Continued from previous page...*

Atom-1	Atom-2	Interatomic distance (Å)	Clash overlap (Å)
2:B:314:VAL:HG12	2:B:315:HIS:H	1.81	0.45
1:A:389:PHE:O	1:A:414:TRP:HA	2.17	0.45
2:B:135:ILE:O	2:B:138:GLU:HG3	2.17	0.45
2:B:129:ALA:HA	2:B:144:TYR:O	2.17	0.45
2:B:421:PRO:HB2	2:B:423:VAL:HG22	1.99	0.45
2:B:85:GLN:O	2:B:89:GLU:N	2.50	0.45
1:A:435:VAL:HG13	2:B:290:THR:CB	2.47	0.44
2:B:305:GLU:O	2:B:309:ILE:HG22	2.16	0.44
1:A:88:TRP:CD2	2:B:143:ARG:CD	3.00	0.44
2:B:101:LYS:HG3	2:B:102:LYS:HG2	1.98	0.44
1:A:85:GLN:HG3	1:A:86:ASP:O	2.17	0.44
2:B:47:ILE:HG22	2:B:146:TYR:HA	1.99	0.44
1:A:148:VAL:O	1:A:150:PRO:HD3	2.17	0.44
1:A:252:TRP:NE1	1:A:295:LEU:HD22	2.33	0.44
1:A:277:ARG:HD2	1:A:334:GLN:CB	2.48	0.44
1:A:296:THR:OG1	1:A:297:GLU:N	2.50	0.44
1:A:465:LYS:HG2	1:A:466:VAL:N	2.33	0.44
2:B:282:LEU:HG	2:B:293:ILE:HG22	1.98	0.44
1:A:9:PRO:HA	1:A:121:ASP:CG	2.38	0.44
1:A:131:THR:CG2	1:A:143:ARG:CD	2.95	0.44
2:B:282:LEU:O	2:B:293:ILE:HG21	2.17	0.44
2:B:60:VAL:HG12	2:B:75:VAL:HG22	1.99	0.44
1:A:241:VAL:HG12	1:A:266:TRP:NE1	2.32	0.44
2:B:238:LYS:HB3	2:B:238:LYS:HZ2	1.82	0.44
1:A:274:ILE:N	1:A:274:ILE:HD12	2.32	0.44
1:A:465:LYS:O	1:A:466:VAL:HG23	2.17	0.44
2:B:125:ARG:HD3	2:B:147:ASN:HA	2.00	0.44
1:A:350:LYS:NZ	1:A:378:GLU:OE2	2.45	0.44
2:B:164:MET:HG3	2:B:168:LEU:HD12	1.99	0.44
1:A:144:TYR:O	1:A:145:GLN:HB3	2.17	0.44
1:A:379:SER:OG	1:A:387:PRO:HD3	2.18	0.44
1:A:295:LEU:HD12	1:A:295:LEU:HA	1.72	0.43
2:B:423:VAL:HG12	2:B:426:TRP:CZ3	2.52	0.43
2:B:195:ILE:N	2:B:195:ILE:HD12	2.33	0.43
2:B:75:VAL:HG11	2:B:77:PHE:CZ	2.53	0.43
1:A:452:LEU:HD23	1:A:470:THR:HG22	1.99	0.43
2:B:306:ASN:HA	2:B:309:ILE:CG2	2.47	0.43
2:B:366:LYS:HD2	2:B:405:TYR:CD2	2.52	0.43
1:A:164:MET:HE3	1:A:164:MET:HB2	1.77	0.43
1:A:27:THR:HG23	1:A:30:LYS:CD	2.44	0.43
1:A:271:TYR:CD2	1:A:314:VAL:HG12	2.52	0.43

*Continued on next page...*

*Continued from previous page...*

Atom-1	Atom-2	Interatomic distance (Å)	Clash overlap (Å)
2:B:241:VAL:HG22	2:B:350:LYS:HA	2.00	0.43
1:A:406:TRP:CG	2:B:420:PRO:HB3	2.54	0.43
1:A:194:GLU:O	1:A:197:GLN:N	2.51	0.43
1:A:379:SER:CB	1:A:387:PRO:HD3	2.48	0.43
1:A:411:ILE:HG22	1:A:414:TRP:CD1	2.54	0.43
1:A:95:PRO:HB3	2:B:136:ASN:O	2.18	0.43
2:B:179:VAL:O	2:B:189:VAL:HA	2.18	0.43
2:B:246:LEU:HD12	2:B:307:ARG:HG3	2.00	0.43
1:A:84:THR:O	1:A:85:GLN:O	2.36	0.43
1:A:258:GLN:HE21	1:A:283:LEU:CD2	2.32	0.43
1:A:31:ILE:HG12	1:A:133:PRO:HD2	2.01	0.43
1:A:473:THR:C	1:A:475:GLN:N	2.72	0.43
2:B:278:GLN:CB	2:B:298:GLU:O	2.67	0.43
1:A:346:PHE:C	1:A:347:LYS:HG3	2.38	0.43
1:A:398:TRP:CD1	1:A:402:TRP:CE3	3.07	0.42
1:A:442:VAL:HB	1:A:481:ALA:HB1	2.00	0.42
1:A:3:SER:HB2	1:A:5:ILE:HD12	1.98	0.42
1:A:410:TRP:HZ3	2:B:405:TYR:HE1	1.67	0.42
2:B:136:ASN:HB3	2:B:138:GLU:CG	2.48	0.42
2:B:298:GLU:O	2:B:301:LEU:HD23	2.19	0.42
1:A:22:LYS:HG3	1:A:22:LYS:O	2.18	0.42
1:A:439:THR:HG22	1:A:441:TYR:HE1	1.83	0.42
1:A:465:LYS:CG	1:A:466:VAL:N	2.83	0.42
1:A:75:VAL:HG11	1:A:77:PHE:CZ	2.55	0.42
2:B:285:GLY:O	2:B:287:LYS:N	2.52	0.42
1:A:171:PHE:HE2	1:A:178:ILE:HD11	1.83	0.42
1:A:356:ARG:NH2	1:A:370:GLU:OE2	2.53	0.42
2:B:195:ILE:HG23	2:B:199:ARG:HH21	1.85	0.42
2:B:308:GLU:C	2:B:310:LEU:N	2.71	0.42
2:B:401:TRP:HE3	2:B:404:GLU:HG3	1.84	0.42
1:A:5:ILE:CG1	1:A:167:ILE:HD11	2.49	0.42
1:A:22:LYS:HD2	1:A:24:TRP:HE1	1.82	0.42
1:A:153:TRP:CZ3	1:A:155:GLY:HA3	2.54	0.42
1:A:235:HIS:ND1	1:A:238:LYS:HE2	2.35	0.42
2:B:286:THR:O	2:B:286:THR:OG1	2.26	0.42
1:A:10:VAL:HG12	1:A:124:PHE:CE1	2.54	0.42
1:A:65:LYS:O	1:A:68:SER:HB2	2.20	0.42
1:A:186:ASP:CB	1:A:188:TYR:CE1	3.02	0.41
1:A:444:GLY:HA2	1:A:552:VAL:HG11	2.02	0.41
2:B:199:ARG:NH2	2:B:233:GLU:OE2	2.53	0.41
2:B:103:LYS:HE3	2:B:179:VAL:CG2	2.49	0.41

*Continued on next page...*

*Continued from previous page...*

Atom-1	Atom-2	Interatomic distance (Å)	Clash overlap (Å)
2:B:309:ILE:CG1	2:B:309:ILE:O	2.67	0.41
1:A:116:PHE:CD2	1:A:148:VAL:HG21	2.56	0.41
1:A:328:GLU:HG3	1:A:390:LYS:HB2	2.00	0.41
1:A:58:THR:HG23	1:A:59:PRO:HD2	2.02	0.41
1:A:11:LYS:N	1:A:85:GLN:OE1	2.35	0.41
2:B:79:GLU:HG3	2:B:83:ARG:HH11	1.85	0.41
1:A:132:ILE:CG1	1:A:142:ILE:HB	2.45	0.41
2:B:156:SER:N	2:B:157:PRO:HD2	2.34	0.41
2:B:191:SER:OG	2:B:193:LEU:HB2	2.21	0.41
2:B:244:ILE:O	2:B:310:LEU:CD2	2.68	0.41
2:B:275:LYS:H	2:B:306:ASN:CG	2.24	0.41
1:A:298:GLU:CD	1:A:298:GLU:N	2.73	0.41
1:A:57:ASN:OD1	1:A:58:THR:N	2.50	0.41
1:A:80:LEU:O	1:A:84:THR:HG23	2.20	0.41
2:B:19:PRO:HG3	2:B:80:LEU:HB2	2.03	0.41
1:A:102:LYS:HE2	1:A:237:ASP:OD2	2.21	0.41
1:A:258:GLN:NE2	1:A:283:LEU:HD21	2.35	0.41
1:A:328:GLU:CG	1:A:390:LYS:HB2	2.50	0.41
1:A:282:LEU:C	1:A:284:ARG:H	2.24	0.41
1:A:435:VAL:HG13	2:B:290:THR:CG2	2.50	0.41
1:A:18:GLY:HA3	1:A:56:TYR:CD1	2.56	0.41
1:A:382:ILE:CA	2:B:136:ASN:HD22	2.32	0.41
1:A:317:VAL:HG11	1:A:347:LYS:CB	2.50	0.41
1:A:317:VAL:HG11	1:A:347:LYS:HE2	2.02	0.41
1:A:281:LYS:O	1:A:284:ARG:CG	2.69	0.40
1:A:344:GLU:HA	1:A:344:GLU:OE1	2.21	0.40
1:A:420:PRO:HA	1:A:422:LEU:H	1.86	0.40
1:A:420:PRO:HA	1:A:422:LEU:N	2.35	0.40
2:B:101:LYS:HG3	2:B:102:LYS:N	2.37	0.40
2:B:194:GLU:CD	2:B:195:ILE:N	2.75	0.40
2:B:244:ILE:HG21	2:B:310:LEU:HD11	2.01	0.40
2:B:255:ASN:O	2:B:258:GLN:HB2	2.21	0.40
1:A:435:VAL:HG22	2:B:290:THR:HG21	2.02	0.40
1:A:73:LYS:NZ	1:A:130:PHE:CE1	2.90	0.40
1:A:441:TYR:CD2	1:A:544:GLY:CA	3.05	0.40
1:A:73:LYS:HE3	1:A:75:VAL:CG2	2.51	0.40
2:B:28:GLU:HB2	2:B:135:ILE:CD1	2.50	0.40
2:B:293:ILE:HA	2:B:293:ILE:HD13	1.99	0.40
1:A:194:GLU:O	1:A:196:GLY:N	2.55	0.40
1:A:235:HIS:ND1	1:A:238:LYS:CE	2.84	0.40
1:A:357:MET:O	1:A:358:ARG:C	2.60	0.40

*Continued on next page...*

*Continued from previous page...*

Atom-1	Atom-2	Interatomic distance (Å)	Clash overlap (Å)
2:B:285:GLY:O	2:B:287:LYS:HG2	2.21	0.40

There are no symmetry-related clashes.

## 5.3 Torsion angles [i](#)

### 5.3.1 Protein backbone [i](#)

In the following table, the Percentiles column shows the percent Ramachandran outliers of the chain as a percentile score with respect to all X-ray entries followed by that with respect to entries of similar resolution.

The Analysed column shows the number of residues for which the backbone conformation was analysed, and the total number of residues.

Mol	Chain	Analysed	Favoured	Allowed	Outliers	Percentiles	
1	A	544/557 (98%)	478 (88%)	59 (11%)	7 (1%)	12	18
2	B	403/428 (94%)	354 (88%)	45 (11%)	4 (1%)	15	23
All	All	947/985 (96%)	832 (88%)	104 (11%)	11 (1%)	13	19

All (11) Ramachandran outliers are listed below:

Mol	Chain	Res	Type
1	A	85	GLN
1	A	542	ILE
2	B	93	GLY
1	A	539	HIS
1	A	135	ILE
2	B	312	GLU
2	B	284	ARG
1	A	461	LYS
1	A	474	ASN
1	A	285	GLY
2	B	421	PRO

### 5.3.2 Protein sidechains [i](#)

In the following table, the Percentiles column shows the percent sidechain outliers of the chain as a percentile score with respect to all X-ray entries followed by that with respect to entries of similar resolution.

The Analysed column shows the number of residues for which the sidechain conformation was analysed, and the total number of residues.

Mol	Chain	Analysed	Rotameric	Outliers	Percentiles	
1	A	477/495 (96%)	444 (93%)	33 (7%)	15	24
2	B	364/390 (93%)	336 (92%)	28 (8%)	13	20
All	All	841/885 (95%)	780 (93%)	61 (7%)	14	21

All (61) residues with a non-rotameric sidechain are listed below:

Mol	Chain	Res	Type
1	A	27	THR
1	A	29	GLU
1	A	38	CYS
1	A	47	ILE
1	A	64	LYS
1	A	74	LEU
1	A	76	ASP
1	A	132	ILE
1	A	142	ILE
1	A	143	ARG
1	A	178	ILE
1	A	182	GLN
1	A	193	LEU
1	A	210	LEU
1	A	237	ASP
1	A	241	VAL
1	A	253	THR
1	A	274	ILE
1	A	277	ARG
1	A	296	THR
1	A	303	LEU
1	A	334	GLN
1	A	349	LEU
1	A	356	ARG
1	A	361	HIS
1	A	409	THR
1	A	435	VAL
1	A	473	THR
1	A	475	GLN
1	A	499	SER
1	A	511	ASP
1	A	533	LEU
1	A	540	LYS

*Continued on next page...*

*Continued from previous page...*

Mol	Chain	Res	Type
2	B	5	ILE
2	B	12	LEU
2	B	13	LYS
2	B	22	LYS
2	B	72	ARG
2	B	89	GLU
2	B	92	LEU
2	B	102	LYS
2	B	173	LYS
2	B	177	ASP
2	B	193	LEU
2	B	218	ASP
2	B	238	LYS
2	B	240	THR
2	B	244	ILE
2	B	250	ASP
2	B	255	ASN
2	B	268	SER
2	B	276	VAL
2	B	282	LEU
2	B	300	GLU
2	B	317	VAL
2	B	330	GLN
2	B	353	LYS
2	B	374	LYS
2	B	414	TRP
2	B	418	ASN
2	B	425	LEU

Sometimes sidechains can be flipped to improve hydrogen bonding and reduce clashes. All (9) such sidechains are listed below:

Mol	Chain	Res	Type
1	A	57	ASN
1	A	161	GLN
1	A	182	GLN
1	A	258	GLN
1	A	336	GLN
1	A	373	GLN
1	A	545	ASN
2	B	147	ASN
2	B	242	GLN

### 5.3.3 RNA ⓘ

There are no RNA molecules in this entry.

## 5.4 Non-standard residues in protein, DNA, RNA chains ⓘ

There are no non-standard protein/DNA/RNA residues in this entry.

## 5.5 Carbohydrates ⓘ

There are no monosaccharides in this entry.

## 5.6 Ligand geometry ⓘ

1 ligand is modelled in this entry.

In the following table, the Counts columns list the number of bonds (or angles) for which Mogul statistics could be retrieved, the number of bonds (or angles) that are observed in the model and the number of bonds (or angles) that are defined in the Chemical Component Dictionary. The Link column lists molecule types, if any, to which the group is linked. The Z score for a bond length (or angle) is the number of standard deviations the observed value is removed from the expected value. A bond length (or angle) with  $|Z| > 2$  is considered an outlier worth inspection. RMSZ is the root-mean-square of all Z scores of the bond lengths (or angles).

Mol	Type	Chain	Res	Link	Bond lengths			Bond angles		
					Counts	RMSZ	# $ Z  > 2$	Counts	RMSZ	# $ Z  > 2$
3	X2J	A	601	1	29,35,36	2.21	3 (10%)	34,47,50	1.76	14 (41%)

In the following table, the Chirals column lists the number of chiral outliers, the number of chiral centers analysed, the number of these observed in the model and the number defined in the Chemical Component Dictionary. Similar counts are reported in the Torsion and Rings columns. '-' means no outliers of that kind were identified.

Mol	Type	Chain	Res	Link	Chirals	Torsions	Rings
3	X2J	A	601	1	-	0/15/18/19	0/3/3/3

All (3) bond length outliers are listed below:

Mol	Chain	Res	Type	Atoms	Z	Observed(Å)	Ideal(Å)
3	A	601	X2J	C0P-N0H	8.48	1.50	1.35
3	A	601	X2J	C0N-N0M	5.46	1.42	1.33
3	A	601	X2J	O07-C01	2.27	1.46	1.42



All (14) bond angle outliers are listed below:

Mol	Chain	Res	Type	Atoms	Z	Observed(°)	Ideal(°)
3	A	601	X2J	C02-C01-C00	-3.61	115.58	120.53
3	A	601	X2J	C0C-C0V-C0W	3.07	121.73	118.14
3	A	601	X2J	C0O-C0P-N0H	-3.00	118.89	121.28
3	A	601	X2J	C03-C02-C01	2.97	123.37	119.73
3	A	601	X2J	C0Z-C0C-C0V	-2.93	116.31	120.98
3	A	601	X2J	C0D-C0E-N0H	2.85	116.70	111.19
3	A	601	X2J	C0Z-C0Y-C13	2.46	127.93	120.60
3	A	601	X2J	O07-C01-C02	2.45	123.46	118.64
3	A	601	X2J	C0Y-C0Z-C0C	2.44	122.07	119.91
3	A	601	X2J	C0X-C0Y-C13	-2.44	113.34	120.60
3	A	601	X2J	C04-O0A-C0C	2.25	123.62	118.00
3	A	601	X2J	O0A-C0C-C0Z	2.19	125.97	119.10
3	A	601	X2J	C0D-O0B-C05	-2.01	112.75	117.69
3	A	601	X2J	C05-C00-C01	2.00	122.58	119.05

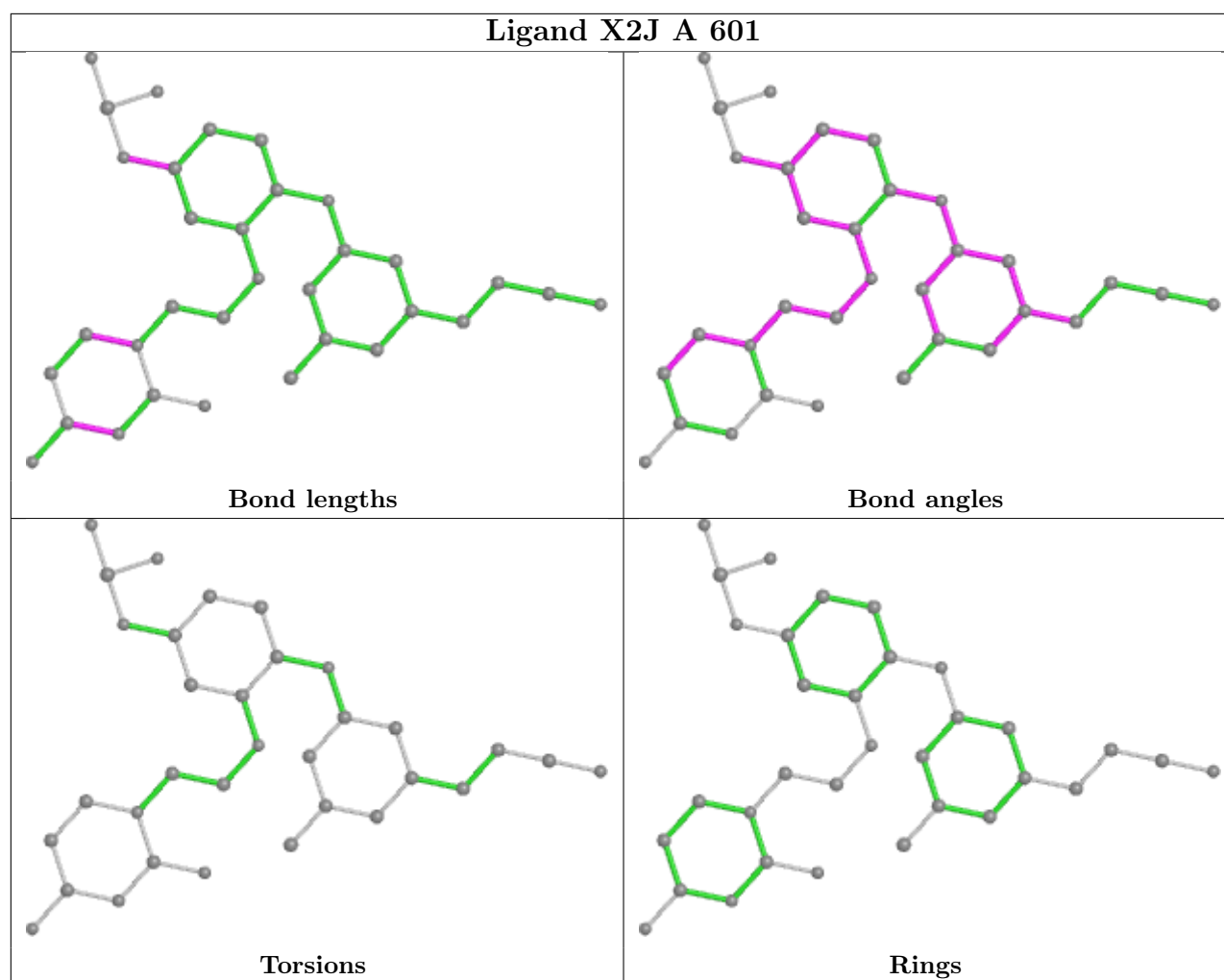
There are no chirality outliers.

There are no torsion outliers.

There are no ring outliers.

No monomer is involved in short contacts.

The following is a two-dimensional graphical depiction of Mogul quality analysis of bond lengths, bond angles, torsion angles, and ring geometry for all instances of the Ligand of Interest. In addition, ligands with molecular weight > 250 and outliers as shown on the validation Tables will also be included. For torsion angles, if less than 5% of the Mogul distribution of torsion angles is within 10 degrees of the torsion angle in question, then that torsion angle is considered an outlier. Any bond that is central to one or more torsion angles identified as an outlier by Mogul will be highlighted in the graph. For rings, the root-mean-square deviation (RMSD) between the ring in question and similar rings identified by Mogul is calculated over all ring torsion angles. If the average RMSD is greater than 60 degrees and the minimal RMSD between the ring in question and any Mogul-identified rings is also greater than 60 degrees, then that ring is considered an outlier. The outliers are highlighted in purple. The color gray indicates Mogul did not find sufficient equivalents in the CSD to analyse the geometry.



## 5.7 Other polymers [i](#)

There are no such residues in this entry.

## 5.8 Polymer linkage issues [i](#)

There are no chain breaks in this entry.

## 6 Fit of model and data

### 6.1 Protein, DNA and RNA chains

In the following table, the column labelled ‘#RSRZ > 2’ contains the number (and percentage) of RSRZ outliers, followed by percent RSRZ outliers for the chain as percentile scores relative to all X-ray entries and entries of similar resolution. The OWAB column contains the minimum, median, 95<sup>th</sup> percentile and maximum values of the occupancy-weighted average B-factor per residue. The column labelled ‘Q < 0.9’ lists the number of (and percentage) of residues with an average occupancy less than 0.9.

Mol	Chain	Analysed	<RSRZ>	#RSRZ>2	OWAB(Å <sup>2</sup> )	Q<0.9
1	A	548/557 (98%)	0.21	18 (3%) 46 43	71, 108, 158, 192	0
2	B	409/428 (95%)	0.27	11 (2%) 54 50	71, 98, 159, 174	0
All	All	957/985 (97%)	0.24	29 (3%) 50 47	71, 105, 159, 192	0

All (29) RSRZ outliers are listed below:

Mol	Chain	Res	Type	RSRZ
1	A	26	LEU	6.1
1	A	551	LEU	4.7
1	A	133	PRO	4.2
2	B	218	ASP	3.9
2	B	252	TRP	3.4
1	A	545	ASN	3.2
1	A	34	LEU	3.1
1	A	22	LYS	3.0
2	B	100	LEU	2.9
1	A	541	GLY	2.9
1	A	100	LEU	2.8
2	B	283	LEU	2.7
2	B	116	PHE	2.6
1	A	544	GLY	2.6
1	A	295	LEU	2.5
1	A	482	ILE	2.4
1	A	187	LEU	2.4
1	A	178	ILE	2.4
1	A	552	VAL	2.3
2	B	74	LEU	2.2
2	B	109	LEU	2.2
2	B	279	LEU	2.2
1	A	398	TRP	2.2
1	A	479	LEU	2.1

*Continued on next page...*

*Continued from previous page...*

Mol	Chain	Res	Type	RSRZ
1	A	533	LEU	2.1
2	B	310	LEU	2.0
2	B	87	PHE	2.0
1	A	411	ILE	2.0
2	B	380	ILE	2.0

## 6.2 Non-standard residues in protein, DNA, RNA chains [i](#)

There are no non-standard protein/DNA/RNA residues in this entry.

## 6.3 Carbohydrates [i](#)

There are no monosaccharides in this entry.

## 6.4 Ligands [i](#)

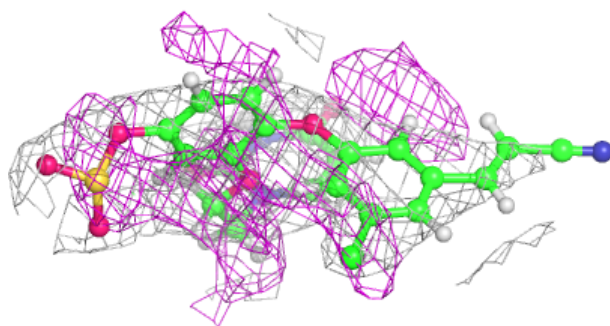
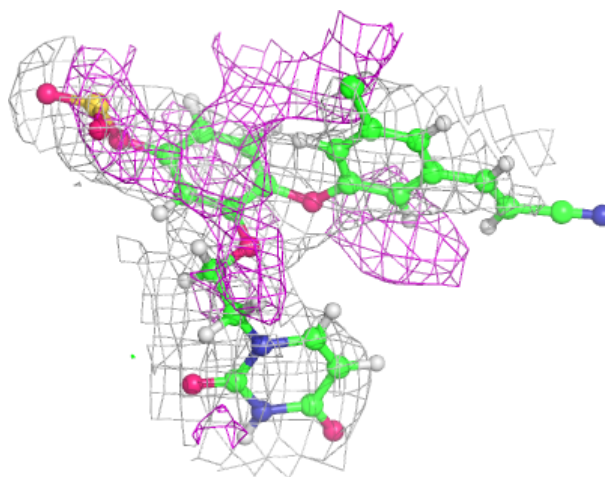
In the following table, the Atoms column lists the number of modelled atoms in the group and the number defined in the chemical component dictionary. The B-factors column lists the minimum, median, 95<sup>th</sup> percentile and maximum values of B factors of atoms in the group. The column labelled 'Q< 0.9' lists the number of atoms with occupancy less than 0.9.

Mol	Type	Chain	Res	Atoms	RSCC	RSR	B-factors( $\text{\AA}^2$ )	Q<0.9
3	X2J	A	601	33/34	0.92	0.26	83,99,116,119	0

The following is a graphical depiction of the model fit to experimental electron density of all instances of the Ligand of Interest. In addition, ligands with molecular weight > 250 and outliers as shown on the geometry validation Tables will also be included. Each fit is shown from different orientation to approximate a three-dimensional view.

**Electron density around X2J A 601:**

$2mF_o-DF_c$  (at 0.7 rmsd) in gray  
 $mF_o-DF_c$  (at 3 rmsd) in purple (negative)  
and green (positive)



## 6.5 Other polymers [i](#)

There are no such residues in this entry.