



Full wwPDB X-ray Structure Validation Report ⓘ

May 13, 2020 – 03:35 pm BST

PDB ID : 3KT3
Title : Crystal structure of *S. cerevisiae* tryptophanyl-tRNA synthetase in complex with TrpAMP
Authors : Zhou, M.; Dong, X.; Zhong, C.; Shen, N.; Ding, J.
Deposited on : 2009-11-24
Resolution : 2.60 Å(reported)

This is a Full wwPDB X-ray Structure Validation Report for a publicly released PDB entry.

We welcome your comments at validation@mail.wwpdb.org

A user guide is available at

<https://www.wwpdb.org/validation/2017/XrayValidationReportHelp>

with specific help available everywhere you see the ⓘ symbol.

The following versions of software and data (see [references ⓘ](#)) were used in the production of this report:

MolProbity : 4.02b-467
Mogul : 1.8.5 (274361), CSD as541be (2020)
Xtriage (Phenix) : 1.13
EDS : 2.11
buster-report : 1.1.7 (2018)
Percentile statistics : 20191225.v01 (using entries in the PDB archive December 25th 2019)
Refmac : 5.8.0158
CCP4 : 7.0.044 (Gargrove)
Ideal geometry (proteins) : Engh & Huber (2001)
Ideal geometry (DNA, RNA) : Parkinson et al. (1996)
Validation Pipeline (wwPDB-VP) : 2.11

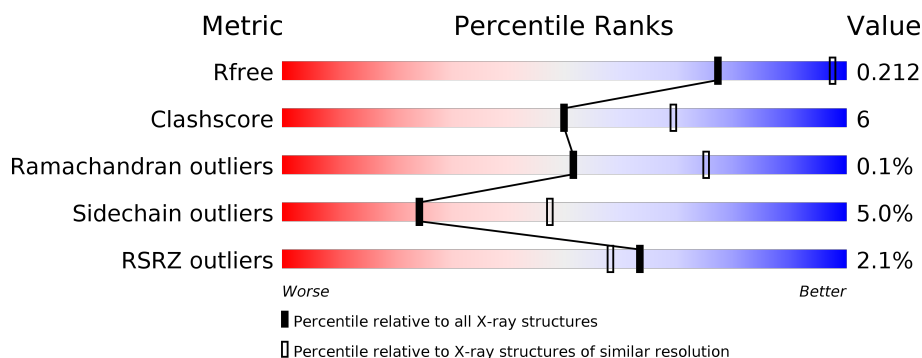
1 Overall quality at a glance

The following experimental techniques were used to determine the structure:

X-RAY DIFFRACTION

The reported resolution of this entry is 2.60 Å.

Percentile scores (ranging between 0-100) for global validation metrics of the entry are shown in the following graphic. The table shows the number of entries on which the scores are based.



Metric	Whole archive (#Entries)	Similar resolution (#Entries, resolution range(Å))
R_{free}	130704	3163 (2.60-2.60)
Clashscore	141614	3518 (2.60-2.60)
Ramachandran outliers	138981	3455 (2.60-2.60)
Sidechain outliers	138945	3455 (2.60-2.60)
RSRZ outliers	127900	3104 (2.60-2.60)

The table below summarises the geometric issues observed across the polymeric chains and their fit to the electron density. The red, orange, yellow and green segments on the lower bar indicate the fraction of residues that contain outliers for ≥ 3 , 2, 1 and 0 types of geometric quality criteria respectively. A grey segment represents the fraction of residues that are not modelled. The numeric value for each fraction is indicated below the corresponding segment, with a dot representing fractions $\leq 5\%$. The upper red bar (where present) indicates the fraction of residues that have poor fit to the electron density. The numeric value is given above the bar.

Mol	Chain	Length	Quality of chain
1	A	438	<div> <div>2%</div> <div> <div></div> <div>79%</div> <div>13%</div> <div>• 7%</div> </div> </div>
1	B	438	<div> <div>2%</div> <div> <div></div> <div>79%</div> <div>13%</div> <div>8%</div> </div> </div>
1	C	438	<div> <div>2%</div> <div> <div></div> <div>77%</div> <div>14%</div> <div>• 8%</div> </div> </div>
1	D	438	<div> <div>2%</div> <div> <div></div> <div>75%</div> <div>17%</div> <div>• 7%</div> </div> </div>

2 Entry composition

There are 4 unique types of molecules in this entry. The entry contains 13496 atoms, of which 0 are hydrogens and 0 are deuteriums.

In the tables below, the ZeroOcc column contains the number of atoms modelled with zero occupancy, the AltConf column contains the number of residues with at least one atom in alternate conformation and the Trace column contains the number of residues modelled with at most 2 atoms.

- Molecule 1 is a protein called Tryptophanyl-tRNA synthetase, cytoplasmic.

Mol	Chain	Residues	Atoms					ZeroOcc	AltConf	Trace
1	A	409	Total	C	N	O	S	0	0	0
			3295	2124	546	612	13			
1	B	405	Total	C	N	O	S	0	0	0
			3265	2105	541	606	13			
1	C	403	Total	C	N	O	S	0	0	0
			3250	2096	539	602	13			
1	D	409	Total	C	N	O	S	0	0	0
			3295	2124	546	612	13			

There are 24 discrepancies between the modelled and reference sequences:

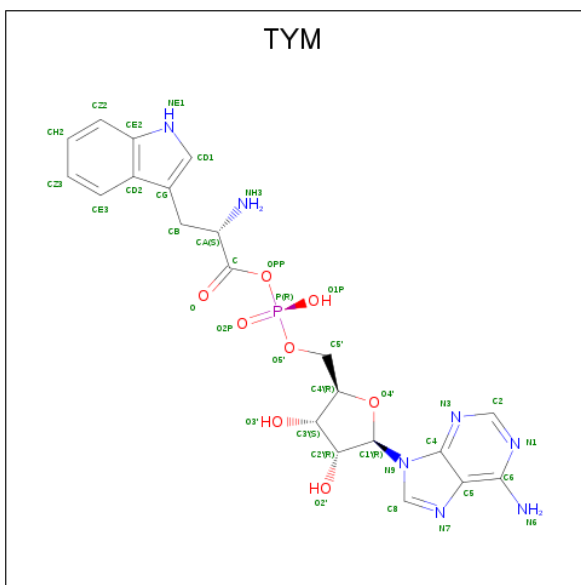
Chain	Residue	Modelled	Actual	Comment	Reference
A	433	HIS	-	EXPRESSION TAG	UNP Q12109
A	434	HIS	-	EXPRESSION TAG	UNP Q12109
A	435	HIS	-	EXPRESSION TAG	UNP Q12109
A	436	HIS	-	EXPRESSION TAG	UNP Q12109
A	437	HIS	-	EXPRESSION TAG	UNP Q12109
A	438	HIS	-	EXPRESSION TAG	UNP Q12109
B	433	HIS	-	EXPRESSION TAG	UNP Q12109
B	434	HIS	-	EXPRESSION TAG	UNP Q12109
B	435	HIS	-	EXPRESSION TAG	UNP Q12109
B	436	HIS	-	EXPRESSION TAG	UNP Q12109
B	437	HIS	-	EXPRESSION TAG	UNP Q12109
B	438	HIS	-	EXPRESSION TAG	UNP Q12109
C	433	HIS	-	EXPRESSION TAG	UNP Q12109
C	434	HIS	-	EXPRESSION TAG	UNP Q12109
C	435	HIS	-	EXPRESSION TAG	UNP Q12109
C	436	HIS	-	EXPRESSION TAG	UNP Q12109
C	437	HIS	-	EXPRESSION TAG	UNP Q12109
C	438	HIS	-	EXPRESSION TAG	UNP Q12109
D	433	HIS	-	EXPRESSION TAG	UNP Q12109
D	434	HIS	-	EXPRESSION TAG	UNP Q12109
D	435	HIS	-	EXPRESSION TAG	UNP Q12109

Continued on next page...

Continued from previous page...

Chain	Residue	Modelled	Actual	Comment	Reference
D	436	HIS	-	EXPRESSION TAG	UNP Q12109
D	437	HIS	-	EXPRESSION TAG	UNP Q12109
D	438	HIS	-	EXPRESSION TAG	UNP Q12109

- Molecule 2 is TRYPTOPHANYL-5'AMP (three-letter code: TYM) (formula: $C_{21}H_{24}N_7O_8P$).



Mol	Chain	Residues	Atoms					ZeroOcc	AltConf
2	A	1	Total	C	N	O	P	0	0
			37	21	7	8	1		
2	B	1	Total	C	N	O	P	0	0
			37	21	7	8	1		
2	C	1	Total	C	N	O	P	0	0
			37	21	7	8	1		
2	D	1	Total	C	N	O	P	0	0
			37	21	7	8	1		

- Molecule 3 is SULFATE ION (three-letter code: SO4) (formula: O_4S).



Mol	Chain	Residues	Atoms			ZeroOcc	AltConf
3	A	1	Total	O	S	0	0
			5	4	1		
3	A	1	Total	O	S	0	0
			5	4	1		
3	A	1	Total	O	S	0	0
			5	4	1		
3	A	1	Total	O	S	0	0
			5	4	1		
3	B	1	Total	O	S	0	0
			5	4	1		
3	B	1	Total	O	S	0	0
			5	4	1		
3	B	1	Total	O	S	0	0
			5	4	1		
3	C	1	Total	O	S	0	0
			5	4	1		
3	C	1	Total	O	S	0	0
			5	4	1		
3	C	1	Total	O	S	0	0
			5	4	1		
3	D	1	Total	O	S	0	0
			5	4	1		
3	D	1	Total	O	S	0	0
			5	4	1		
3	D	1	Total	O	S	0	0
			5	4	1		

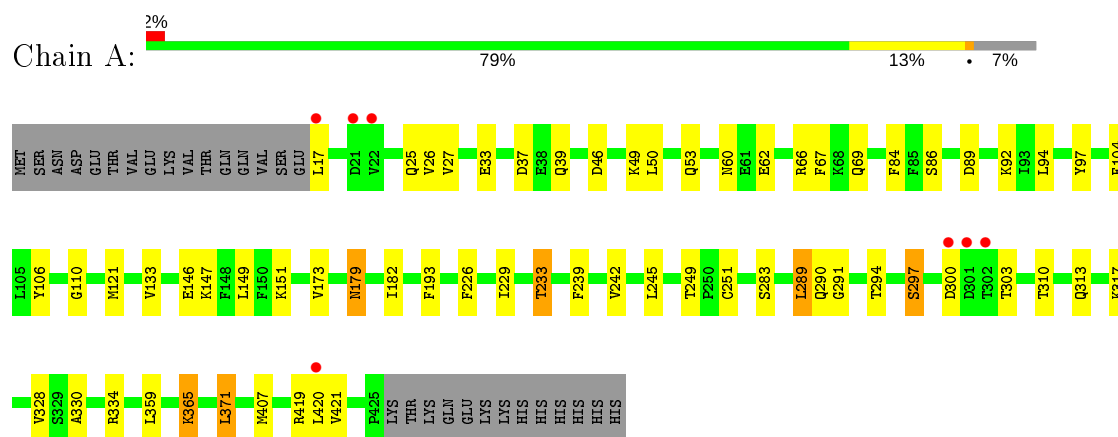
- Molecule 4 is water.

Mol	Chain	Residues	Atoms		ZeroOcc	AltConf
4	A	63	Total 63	O 63	0	0
4	B	36	Total 36	O 36	0	0
4	C	54	Total 54	O 54	0	0
4	D	25	Total 25	O 25	0	0

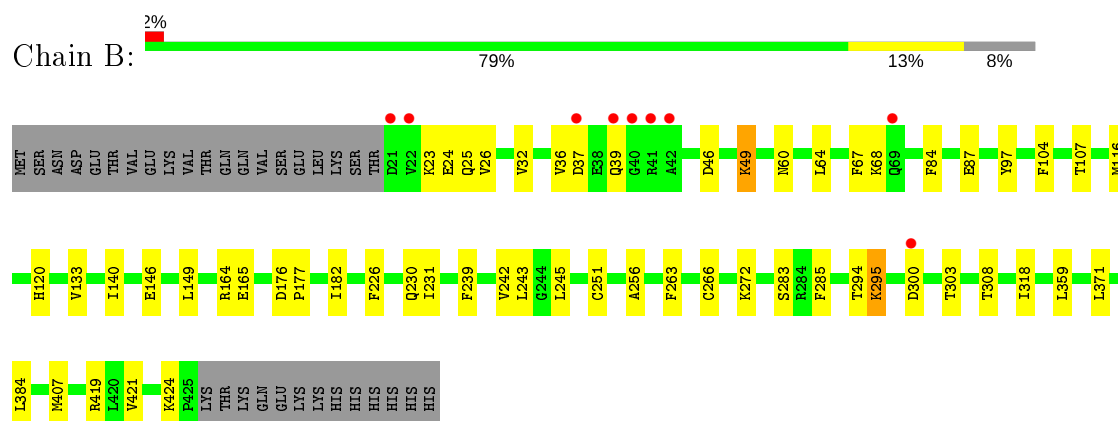
3 Residue-property plots [i](#)

These plots are drawn for all protein, RNA and DNA chains in the entry. The first graphic for a chain summarises the proportions of the various outlier classes displayed in the second graphic. The second graphic shows the sequence view annotated by issues in geometry and electron density. Residues are color-coded according to the number of geometric quality criteria for which they contain at least one outlier: green = 0, yellow = 1, orange = 2 and red = 3 or more. A red dot above a residue indicates a poor fit to the electron density ($RSRZ > 2$). Stretches of 2 or more consecutive residues without any outlier are shown as a green connector. Residues present in the sample, but not in the model, are shown in grey.

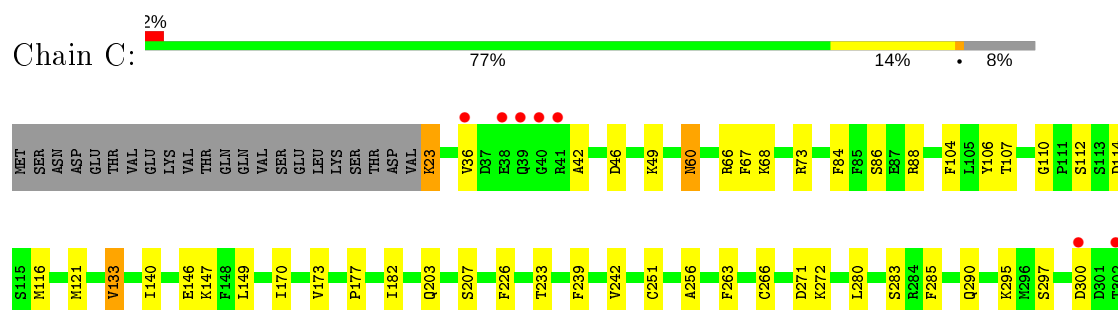
- Molecule 1: Tryptophanyl-tRNA synthetase, cytoplasmic

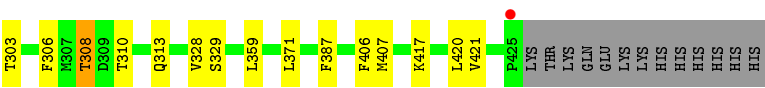


- Molecule 1: Tryptophanyl-tRNA synthetase, cytoplasmic

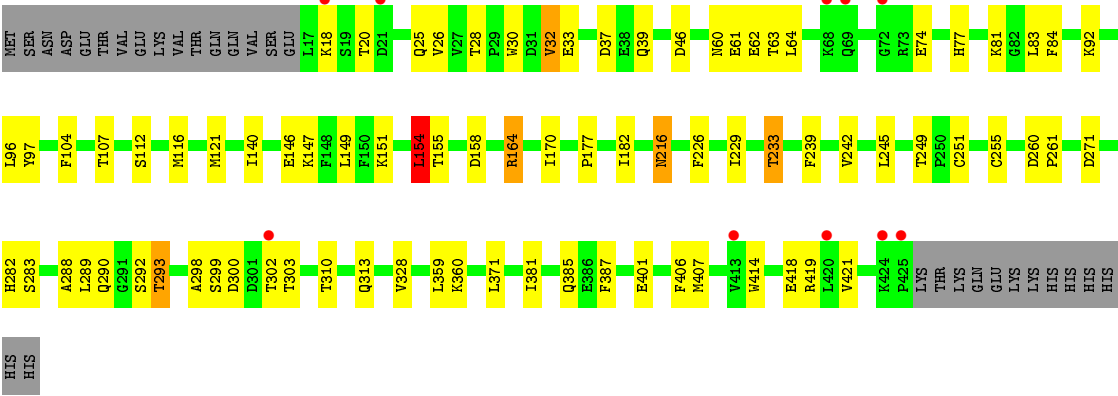
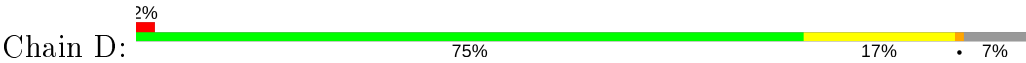


- Molecule 1: Tryptophanyl-tRNA synthetase, cytoplasmic





● Molecule 1: Tryptophanyl-tRNA synthetase, cytoplasmic



4 Data and refinement statistics

Property	Value	Source
Space group	P 61	Depositor
Cell constants a, b, c, α , β , γ	251.76Å 251.76Å 111.10Å 90.00° 90.00° 120.00°	Depositor
Resolution (Å)	48.94 – 2.60 48.94 – 2.60	Depositor EDS
% Data completeness (in resolution range)	96.1 (48.94-2.60) 96.1 (48.94-2.60)	Depositor EDS
R_{merge}	0.06	Depositor
R_{sym}	(Not available)	Depositor
$\langle I/\sigma(I) \rangle$ ¹	2.98 (at 2.61Å)	Xtriage
Refinement program	REFMAC 5.2.0019	Depositor
R, R_{free}	0.214 , 0.237 0.212 , 0.212	Depositor DCC
R_{free} test set	5914 reflections (5.01%)	wwPDB-VP
Wilson B-factor (Å ²)	49.8	Xtriage
Anisotropy	0.492	Xtriage
Bulk solvent k_{sol} (e/Å ³), B_{sol} (Å ²)	0.33 , 35.3	EDS
L-test for twinning ²	$\langle L \rangle = 0.52$, $\langle L^2 \rangle = 0.35$	Xtriage
Estimated twinning fraction	0.010 for h,-h-k,-l	Xtriage
F_o, F_c correlation	0.94	EDS
Total number of atoms	13496	wwPDB-VP
Average B, all atoms (Å ²)	53.0	wwPDB-VP

Xtriage's analysis on translational NCS is as follows: *The largest off-origin peak in the Patterson function is 2.67% of the height of the origin peak. No significant pseudotranslation is detected.*

¹Intensities estimated from amplitudes.

²Theoretical values of $\langle |L| \rangle$, $\langle L^2 \rangle$ for acentric reflections are 0.5, 0.333 respectively for untwinned datasets, and 0.375, 0.2 for perfectly twinned datasets.

5 Model quality [i](#)

5.1 Standard geometry [i](#)

Bond lengths and bond angles in the following residue types are not validated in this section: TYM, SO4

The Z score for a bond length (or angle) is the number of standard deviations the observed value is removed from the expected value. A bond length (or angle) with $|Z| > 5$ is considered an outlier worth inspection. RMSZ is the root-mean-square of all Z scores of the bond lengths (or angles).

Mol	Chain	Bond lengths		Bond angles	
		RMSZ	$\# Z > 5$	RMSZ	$\# Z > 5$
1	A	0.35	0/3377	0.50	0/4557
1	B	0.34	0/3347	0.50	0/4517
1	C	0.35	0/3332	0.48	0/4496
1	D	0.35	0/3377	0.50	1/4557 (0.0%)
All	All	0.35	0/13433	0.49	1/18127 (0.0%)

There are no bond length outliers.

All (1) bond angle outliers are listed below:

Mol	Chain	Res	Type	Atoms	Z	Observed(°)	Ideal(°)
1	D	154	LEU	CA-CB-CG	5.56	128.10	115.30

There are no chirality outliers.

There are no planarity outliers.

5.2 Too-close contacts [i](#)

In the following table, the Non-H and H(model) columns list the number of non-hydrogen atoms and hydrogen atoms in the chain respectively. The H(added) column lists the number of hydrogen atoms added and optimized by MolProbity. The Clashes column lists the number of clashes within the asymmetric unit, whereas Symm-Clashes lists symmetry related clashes.

Mol	Chain	Non-H	H(model)	H(added)	Clashes	Symm-Clashes
1	A	3295	0	3258	39	0
1	B	3265	0	3222	31	0
1	C	3250	0	3209	38	0
1	D	3295	0	3258	45	0
2	A	37	0	23	0	0
2	B	37	0	23	1	0

Continued on next page...

Continued from previous page...

Mol	Chain	Non-H	H(model)	H(added)	Clashes	Symm-Clashes
2	C	37	0	23	1	0
2	D	37	0	23	0	0
3	A	20	0	0	0	0
3	B	15	0	0	0	0
3	C	15	0	0	1	0
3	D	15	0	0	1	0
4	A	63	0	0	0	0
4	B	36	0	0	0	0
4	C	54	0	0	0	0
4	D	25	0	0	0	0
All	All	13496	0	13039	153	0

The all-atom clashscore is defined as the number of clashes found per 1000 atoms (including hydrogen atoms). The all-atom clashscore for this structure is 6.

All (153) close contacts within the same asymmetric unit are listed below, sorted by their clash magnitude.

Atom-1	Atom-2	Interatomic distance (Å)	Clash overlap (Å)
1:A:300:ASP:HB3	1:A:303:THR:HB	1.15	1.14
1:A:290:GLN:OE1	1:A:303:THR:HG23	1.57	1.02
1:A:300:ASP:CB	1:A:303:THR:HB	2.03	0.88
1:D:28:THR:HG22	1:D:30:TRP:H	1.37	0.88
1:A:310:THR:H	1:A:313:GLN:HE21	1.21	0.87
1:C:310:THR:H	1:C:313:GLN:HE21	1.27	0.79
1:D:381:ILE:O	1:D:385:GLN:HB2	1.84	0.77
1:D:25:GLN:HE22	1:D:46:ASP:H	1.34	0.74
1:D:290:GLN:HG2	1:D:303:THR:HG23	1.70	0.73
1:A:179:ASN:H	1:A:179:ASN:HD22	1.39	0.69
1:C:110:GLY:HA3	1:C:147:LYS:HE3	1.72	0.69
1:A:37:ASP:HB3	1:A:39:GLN:H	1.59	0.68
1:A:67:PHE:HZ	1:A:133:VAL:HG11	1.57	0.68
1:B:285:PHE:HB3	1:B:295:LYS:HB3	1.75	0.68
1:A:121:MET:HE1	1:A:173:VAL:HG22	1.74	0.67
1:C:203:GLN:HB3	1:C:272:LYS:HE2	1.75	0.66
1:D:164:ARG:HH11	1:D:164:ARG:CG	2.08	0.66
1:D:229:ILE:O	1:D:233:THR:HG22	1.97	0.64
1:D:155:THR:HG23	1:D:158:ASP:H	1.63	0.64
1:C:67:PHE:HZ	1:C:133:VAL:HG11	1.64	0.63
1:C:300:ASP:HB3	1:C:303:THR:HB	1.81	0.61
1:C:300:ASP:CB	1:C:303:THR:HB	2.31	0.61
1:C:112:SER:HB3	1:C:147:LYS:HD2	1.84	0.60

Continued on next page...

Continued from previous page...

Atom-1	Atom-2	Interatomic distance (Å)	Clash overlap (Å)
1:B:97:TYR:O	1:B:419:ARG:NH2	2.33	0.59
1:B:67:PHE:HZ	1:B:133:VAL:HG11	1.68	0.59
1:A:297:SER:O	1:A:300:ASP:HB2	2.03	0.58
1:D:116:MET:HE3	1:D:170:ILE:HG13	1.85	0.58
1:B:294:THR:HG22	1:B:295:LYS:N	2.19	0.58
1:A:49:LYS:HG2	1:A:53:GLN:HE21	1.69	0.58
1:D:37:ASP:HB3	1:D:39:GLN:H	1.69	0.57
1:A:66:ARG:HG2	1:A:94:LEU:HD13	1.87	0.57
1:A:310:THR:H	1:A:313:GLN:NE2	1.95	0.57
1:A:67:PHE:CZ	1:A:133:VAL:HG11	2.39	0.57
1:C:146:GLU:HB2	1:C:226:PHE:CZ	2.40	0.57
1:C:67:PHE:CZ	1:C:133:VAL:HG11	2.40	0.56
1:C:239:PHE:HB3	1:C:242:VAL:HB	1.86	0.56
1:B:146:GLU:HB2	1:B:226:PHE:CZ	2.41	0.56
1:A:97:TYR:O	1:A:419:ARG:NH2	2.31	0.55
1:D:84:PHE:CZ	1:D:283:SER:HB3	2.42	0.55
1:D:418:GLU:H	1:D:418:GLU:CD	2.10	0.55
1:D:164:ARG:HG3	1:D:164:ARG:HH11	1.71	0.55
1:B:294:THR:HG22	1:B:295:LYS:H	1.72	0.54
1:B:24:GLU:HG2	1:B:25:GLN:N	2.22	0.54
1:A:193:PHE:CE1	1:A:233:THR:HG22	2.44	0.53
1:B:318:ILE:HD11	1:B:384:LEU:HD12	1.89	0.53
1:A:330:ALA:O	1:A:334:ARG:HG2	2.09	0.53
1:C:310:THR:H	1:C:313:GLN:NE2	2.02	0.52
1:D:239:PHE:HB3	1:D:242:VAL:HB	1.92	0.52
1:B:231:ILE:HG12	1:B:266:CYS:HB2	1.91	0.52
1:C:121:MET:HE3	1:C:173:VAL:HG22	1.90	0.52
1:C:116:MET:HE3	1:C:170:ILE:HG13	1.91	0.52
1:A:146:GLU:HB2	1:A:226:PHE:CZ	2.45	0.51
1:D:310:THR:H	1:D:313:GLN:HE21	1.57	0.51
1:A:289:LEU:HD21	1:A:317:LYS:HB3	1.91	0.51
1:C:104:PHE:CZ	1:C:251:CYS:HB3	2.45	0.51
1:D:116:MET:CE	1:D:170:ILE:HG13	2.41	0.50
1:B:67:PHE:CZ	1:B:133:VAL:HG11	2.45	0.50
1:D:310:THR:H	1:D:313:GLN:NE2	2.09	0.50
1:D:104:PHE:CZ	1:D:251:CYS:HB3	2.47	0.50
1:A:84:PHE:CZ	1:A:283:SER:HB3	2.47	0.50
1:D:77:HIS:HB2	1:D:81:LYS:HE3	1.93	0.50
1:A:146:GLU:HB2	1:A:226:PHE:CE1	2.47	0.50
1:A:300:ASP:HB3	1:A:303:THR:CB	2.10	0.49
1:B:24:GLU:HG2	1:B:25:GLN:H	1.76	0.49

Continued on next page...

Continued from previous page...

Atom-1	Atom-2	Interatomic distance (Å)	Clash overlap (Å)
1:C:36:VAL:HG12	1:C:42:ALA:HA	1.93	0.49
1:A:110:GLY:HA3	1:A:147:LYS:HE2	1.93	0.49
1:B:46:ASP:OD2	1:B:49:LYS:HB2	2.13	0.49
1:D:151:LYS:O	1:D:154:LEU:HD22	2.12	0.49
1:A:245:LEU:HD13	1:A:249:THR:HG21	1.95	0.49
1:D:288:ALA:HB1	1:D:303:THR:HG22	1.94	0.48
1:B:256:ALA:HB3	2:B:700:TYM:O2'	2.13	0.48
1:D:260:ASP:N	1:D:261:PRO:HD2	2.28	0.48
1:B:25:GLN:OE1	1:B:46:ASP:N	2.40	0.48
1:B:84:PHE:CZ	1:B:283:SER:HB3	2.48	0.48
1:A:104:PHE:CZ	1:A:251:CYS:HB3	2.48	0.48
1:B:300:ASP:HB3	1:B:303:THR:HB	1.94	0.47
1:C:84:PHE:CZ	1:C:283:SER:HB3	2.49	0.47
1:D:164:ARG:CG	1:D:164:ARG:NH1	2.72	0.47
1:A:239:PHE:HB3	1:A:242:VAL:HB	1.97	0.47
1:B:37:ASP:HB3	1:B:39:GLN:HG2	1.96	0.47
1:C:290:GLN:HE21	1:C:303:THR:HG23	1.79	0.47
1:D:298:ALA:C	1:D:300:ASP:H	2.17	0.47
1:B:104:PHE:CZ	1:B:251:CYS:HB3	2.49	0.47
1:B:116:MET:HG2	1:B:120:HIS:HB2	1.96	0.47
1:B:23:LYS:HG2	1:B:36:VAL:HG12	1.96	0.47
1:D:121:MET:HE2	1:D:387:PHE:HZ	1.79	0.47
1:D:146:GLU:HB2	1:D:226:PHE:CZ	2.50	0.47
1:C:88:ARG:HD2	1:C:280:LEU:HD13	1.96	0.46
1:C:177:PRO:HD3	1:C:406:PHE:CZ	2.49	0.46
1:D:290:GLN:HG2	1:D:303:THR:CG2	2.44	0.46
1:A:26:VAL:HB	1:A:33:GLU:HG3	1.97	0.46
1:C:23:LYS:HA	1:C:36:VAL:CG2	2.46	0.46
1:C:182:ILE:O	1:C:407:MET:HA	2.16	0.46
1:D:26:VAL:O	1:D:32:VAL:HA	2.15	0.46
1:C:46:ASP:OD2	1:C:49:LYS:HB2	2.15	0.46
1:D:74:GLU:N	3:D:440:SO4:O3	2.45	0.46
1:C:121:MET:HE2	1:C:387:PHE:HZ	1.82	0.45
1:C:60:ASN:HD22	1:C:60:ASN:C	2.18	0.45
1:C:73:ARG:NE	3:C:439:SO4:O1	2.49	0.45
1:D:60:ASN:HB2	1:D:63:THR:H	1.81	0.45
1:B:182:ILE:O	1:B:407:MET:HA	2.16	0.45
1:C:121:MET:HE2	1:C:387:PHE:CZ	2.51	0.45
1:D:121:MET:HE2	1:D:387:PHE:CZ	2.51	0.45
1:A:229:ILE:O	1:A:233:THR:HG23	2.17	0.44
1:A:179:ASN:H	1:A:179:ASN:ND2	2.12	0.44

Continued on next page...

Continued from previous page...

Atom-1	Atom-2	Interatomic distance (Å)	Clash overlap (Å)
1:A:182:ILE:O	1:A:407:MET:HA	2.17	0.44
1:D:245:LEU:HD21	1:D:414:TRP:HZ2	1.83	0.44
1:A:27:VAL:HG21	1:A:50:LEU:HD11	2.00	0.44
1:B:239:PHE:HB3	1:B:242:VAL:HB	1.98	0.44
1:C:116:MET:CE	1:C:170:ILE:HG13	2.47	0.44
1:D:107:THR:O	1:D:140:ILE:HA	2.18	0.44
1:C:306:PHE:C	1:C:308:THR:H	2.19	0.44
1:A:147:LYS:HA	1:A:147:LYS:HD3	1.83	0.44
1:D:18:LYS:HD3	1:D:18:LYS:H	1.83	0.44
1:D:92:LYS:O	1:D:96:LEU:HG	2.18	0.44
1:D:216:ASN:C	1:D:216:ASN:HD22	2.20	0.43
1:C:233:THR:HG23	1:C:239:PHE:HZ	1.83	0.43
1:C:84:PHE:CE1	1:C:283:SER:HB3	2.53	0.43
1:D:245:LEU:HD13	1:D:249:THR:HG21	2.00	0.43
1:C:121:MET:CE	1:C:173:VAL:HG22	2.48	0.43
1:D:177:PRO:HD3	1:D:406:PHE:CZ	2.53	0.43
1:A:89:ASP:O	1:A:92:LYS:HG2	2.19	0.43
1:C:256:ALA:HB3	2:C:600:TYM:O2'	2.19	0.43
1:C:290:GLN:NE2	1:C:303:THR:HG23	2.33	0.43
1:D:25:GLN:HE22	1:D:46:ASP:N	2.10	0.43
1:A:365:LYS:HB3	1:A:371:LEU:HB2	2.01	0.43
1:B:116:MET:HG2	1:B:120:HIS:CB	2.48	0.43
1:C:263:PHE:HA	1:C:266:CYS:HB3	2.01	0.43
1:C:107:THR:O	1:C:140:ILE:HA	2.18	0.42
1:D:182:ILE:O	1:D:407:MET:HA	2.18	0.42
1:A:25:GLN:OE1	1:A:46:ASP:N	2.35	0.42
1:B:176:ASP:OD1	1:B:177:PRO:HD2	2.18	0.42
1:C:285:PHE:HB3	1:C:295:LYS:HB2	2.01	0.42
1:A:193:PHE:HE1	1:A:233:THR:HG22	1.84	0.42
1:B:60:ASN:O	1:B:64:LEU:HG	2.20	0.42
1:C:300:ASP:HB3	1:C:303:THR:CB	2.48	0.42
1:D:61:GLU:HA	1:D:64:LEU:HD12	2.00	0.42
1:D:255:CYS:O	1:D:282:HIS:HA	2.20	0.42
1:B:26:VAL:O	1:B:32:VAL:HA	2.18	0.42
1:D:292:SER:O	1:D:293:THR:HG22	2.19	0.42
1:A:84:PHE:HA	1:A:283:SER:HA	2.02	0.42
1:D:97:TYR:O	1:D:419:ARG:NH2	2.30	0.41
1:B:107:THR:O	1:B:140:ILE:HA	2.20	0.41
1:C:147:LYS:HD3	1:C:147:LYS:HA	1.82	0.41
1:B:243:LEU:HB3	1:B:245:LEU:HD12	2.02	0.41
1:B:285:PHE:CB	1:B:295:LYS:HB3	2.48	0.41

Continued on next page...

Continued from previous page...

Atom-1	Atom-2	Interatomic distance (Å)	Clash overlap (Å)
1:D:146:GLU:HB2	1:D:226:PHE:CE1	2.56	0.41
1:A:60:ASN:HB3	1:A:62:GLU:H	1.86	0.41
1:B:32:VAL:CG2	1:B:295:LYS:HG3	2.51	0.41
1:A:106:TYR:CZ	1:A:233:THR:OG1	2.74	0.41
1:A:179:ASN:N	1:A:179:ASN:HD22	2.04	0.40
1:B:263:PHE:HA	1:B:266:CYS:HB3	2.04	0.40
1:D:290:GLN:CG	1:D:303:THR:HG23	2.48	0.40

There are no symmetry-related clashes.

5.3 Torsion angles [i](#)

5.3.1 Protein backbone [i](#)

In the following table, the Percentiles column shows the percent Ramachandran outliers of the chain as a percentile score with respect to all X-ray entries followed by that with respect to entries of similar resolution.

The Analysed column shows the number of residues for which the backbone conformation was analysed, and the total number of residues.

Mol	Chain	Analysed	Favoured	Allowed	Outliers	Percentiles	
1	A	407/438 (93%)	399 (98%)	7 (2%)	1 (0%)	47	71
1	B	403/438 (92%)	392 (97%)	11 (3%)	0	100	100
1	C	401/438 (92%)	393 (98%)	8 (2%)	0	100	100
1	D	407/438 (93%)	397 (98%)	9 (2%)	1 (0%)	47	71
All	All	1618/1752 (92%)	1581 (98%)	35 (2%)	2 (0%)	51	75

All (2) Ramachandran outliers are listed below:

Mol	Chain	Res	Type
1	D	299	SER
1	A	291	GLY

5.3.2 Protein sidechains [i](#)

In the following table, the Percentiles column shows the percent sidechain outliers of the chain as a percentile score with respect to all X-ray entries followed by that with respect to entries of similar resolution.

The Analysed column shows the number of residues for which the sidechain conformation was analysed, and the total number of residues.

Mol	Chain	Analysed	Rotameric	Outliers	Percentiles	
1	A	362/391 (93%)	346 (96%)	16 (4%)	28	53
1	B	358/391 (92%)	344 (96%)	14 (4%)	32	58
1	C	356/391 (91%)	336 (94%)	20 (6%)	21	42
1	D	362/391 (93%)	340 (94%)	22 (6%)	18	38
All	All	1438/1564 (92%)	1366 (95%)	72 (5%)	24	47

All (72) residues with a non-rotameric sidechain are listed below:

Mol	Chain	Res	Type
1	A	17	LEU
1	A	69	GLN
1	A	86	SER
1	A	149	LEU
1	A	151	LYS
1	A	179	ASN
1	A	233	THR
1	A	289	LEU
1	A	294	THR
1	A	297	SER
1	A	328	VAL
1	A	359	LEU
1	A	365	LYS
1	A	371	LEU
1	A	420	LEU
1	A	421	VAL
1	B	49	LYS
1	B	68	LYS
1	B	87	GLU
1	B	149	LEU
1	B	164	ARG
1	B	165	GLU
1	B	230	GLN
1	B	272	LYS
1	B	295	LYS
1	B	308	THR
1	B	359	LEU
1	B	371	LEU
1	B	421	VAL
1	B	424	LYS

Continued on next page...

Continued from previous page...

Mol	Chain	Res	Type
1	C	23	LYS
1	C	60	ASN
1	C	66	ARG
1	C	68	LYS
1	C	86	SER
1	C	106	TYR
1	C	114	ASP
1	C	133	VAL
1	C	149	LEU
1	C	207	SER
1	C	271	ASP
1	C	297	SER
1	C	308	THR
1	C	328	VAL
1	C	329	SER
1	C	359	LEU
1	C	371	LEU
1	C	417	LYS
1	C	420	LEU
1	C	421	VAL
1	D	20	THR
1	D	32	VAL
1	D	33	GLU
1	D	62	GLU
1	D	83	LEU
1	D	112	SER
1	D	147	LYS
1	D	149	LEU
1	D	154	LEU
1	D	164	ARG
1	D	216	ASN
1	D	233	THR
1	D	271	ASP
1	D	289	LEU
1	D	293	THR
1	D	302	THR
1	D	328	VAL
1	D	359	LEU
1	D	360	LYS
1	D	371	LEU
1	D	401	GLU
1	D	421	VAL

Some sidechains can be flipped to improve hydrogen bonding and reduce clashes. All (18) such sidechains are listed below:

Mol	Chain	Res	Type
1	A	53	GLN
1	A	77	HIS
1	A	131	GLN
1	A	179	ASN
1	A	313	GLN
1	A	385	GLN
1	B	69	GLN
1	B	77	HIS
1	B	290	GLN
1	B	385	GLN
1	C	60	ASN
1	C	290	GLN
1	C	313	GLN
1	C	385	GLN
1	D	25	GLN
1	D	216	ASN
1	D	313	GLN
1	D	385	GLN

5.3.3 RNA [i](#)

There are no RNA molecules in this entry.

5.4 Non-standard residues in protein, DNA, RNA chains [i](#)

There are no non-standard protein/DNA/RNA residues in this entry.

5.5 Carbohydrates [i](#)

There are no carbohydrates in this entry.

5.6 Ligand geometry [i](#)

17 ligands are modelled in this entry.

In the following table, the Counts columns list the number of bonds (or angles) for which Mogul statistics could be retrieved, the number of bonds (or angles) that are observed in the model and the number of bonds (or angles) that are defined in the Chemical Component Dictionary. The Link column lists molecule types, if any, to which the group is linked. The Z score for a bond

length (or angle) is the number of standard deviations the observed value is removed from the expected value. A bond length (or angle) with $|Z| > 2$ is considered an outlier worth inspection. RMSZ is the root-mean-square of all Z scores of the bond lengths (or angles).

Mol	Type	Chain	Res	Link	Bond lengths			Bond angles		
					Counts	RMSZ	# Z > 2	Counts	RMSZ	# Z > 2
3	SO4	D	441	-	4,4,4	0.14	0	6,6,6	0.09	0
3	SO4	A	442	-	4,4,4	0.16	0	6,6,6	0.08	0
3	SO4	A	440	-	4,4,4	0.14	0	6,6,6	0.09	0
3	SO4	C	441	-	4,4,4	0.17	0	6,6,6	0.11	0
3	SO4	C	440	-	4,4,4	0.15	0	6,6,6	0.17	0
3	SO4	A	441	-	4,4,4	0.15	0	6,6,6	0.09	0
3	SO4	B	439	-	4,4,4	0.15	0	6,6,6	0.11	0
2	TYM	C	600	-	36,41,41	1.10	1 (2%)	39,61,61	1.18	2 (5%)
3	SO4	B	440	-	4,4,4	0.14	0	6,6,6	0.15	0
2	TYM	D	800	-	36,41,41	1.10	1 (2%)	39,61,61	1.14	3 (7%)
2	TYM	A	500	-	36,41,41	1.05	1 (2%)	39,61,61	1.20	3 (7%)
3	SO4	D	439	-	4,4,4	0.16	0	6,6,6	0.10	0
3	SO4	A	439	-	4,4,4	0.16	0	6,6,6	0.10	0
3	SO4	B	441	-	4,4,4	0.14	0	6,6,6	0.07	0
2	TYM	B	700	-	36,41,41	1.07	1 (2%)	39,61,61	1.19	3 (7%)
3	SO4	C	439	-	4,4,4	0.16	0	6,6,6	0.14	0
3	SO4	D	440	-	4,4,4	0.15	0	6,6,6	0.09	0

In the following table, the Chirals column lists the number of chiral outliers, the number of chiral centers analysed, the number of these observed in the model and the number defined in the Chemical Component Dictionary. Similar counts are reported in the Torsion and Rings columns. '-' means no outliers of that kind were identified.

Mol	Type	Chain	Res	Link	Chirals	Torsions	Rings
2	TYM	A	500	-	-	2/16/39/39	0/5/5/5
2	TYM	D	800	-	-	2/16/39/39	0/5/5/5
2	TYM	C	600	-	-	2/16/39/39	0/5/5/5
2	TYM	B	700	-	-	2/16/39/39	0/5/5/5

All (4) bond length outliers are listed below:

Mol	Chain	Res	Type	Atoms	Z	Observed(Å)	Ideal(Å)
2	C	600	TYM	O4'-C1'	3.87	1.46	1.41
2	D	800	TYM	O4'-C1'	3.68	1.46	1.41
2	B	700	TYM	O4'-C1'	3.66	1.46	1.41
2	A	500	TYM	O4'-C1'	3.39	1.45	1.41

All (11) bond angle outliers are listed below:

Mol	Chain	Res	Type	Atoms	Z	Observed(°)	Ideal(°)
2	C	600	TYM	N3-C2-N1	-4.80	121.18	128.68
2	B	700	TYM	N3-C2-N1	-4.69	121.35	128.68
2	A	500	TYM	N3-C2-N1	-4.60	121.48	128.68
2	D	800	TYM	N3-C2-N1	-4.44	121.74	128.68
2	B	700	TYM	CB-CG-CD1	-2.22	125.22	127.97
2	A	500	TYM	CB-CG-CD1	-2.19	125.26	127.97
2	D	800	TYM	O1P-P-OPP	2.16	111.19	104.14
2	D	800	TYM	CB-CG-CD1	-2.15	125.31	127.97
2	C	600	TYM	CB-CG-CD1	-2.13	125.33	127.97
2	B	700	TYM	O1P-P-OPP	2.11	111.05	104.14
2	A	500	TYM	O1P-P-OPP	2.08	110.92	104.14

There are no chirality outliers.

All (8) torsion outliers are listed below:

Mol	Chain	Res	Type	Atoms
2	A	500	TYM	NH3-CA-CB-CG
2	C	600	TYM	C-CA-CB-CG
2	D	800	TYM	NH3-CA-CB-CG
2	A	500	TYM	C-CA-CB-CG
2	C	600	TYM	NH3-CA-CB-CG
2	D	800	TYM	C-CA-CB-CG
2	B	700	TYM	NH3-CA-CB-CG
2	B	700	TYM	C-CA-CB-CG

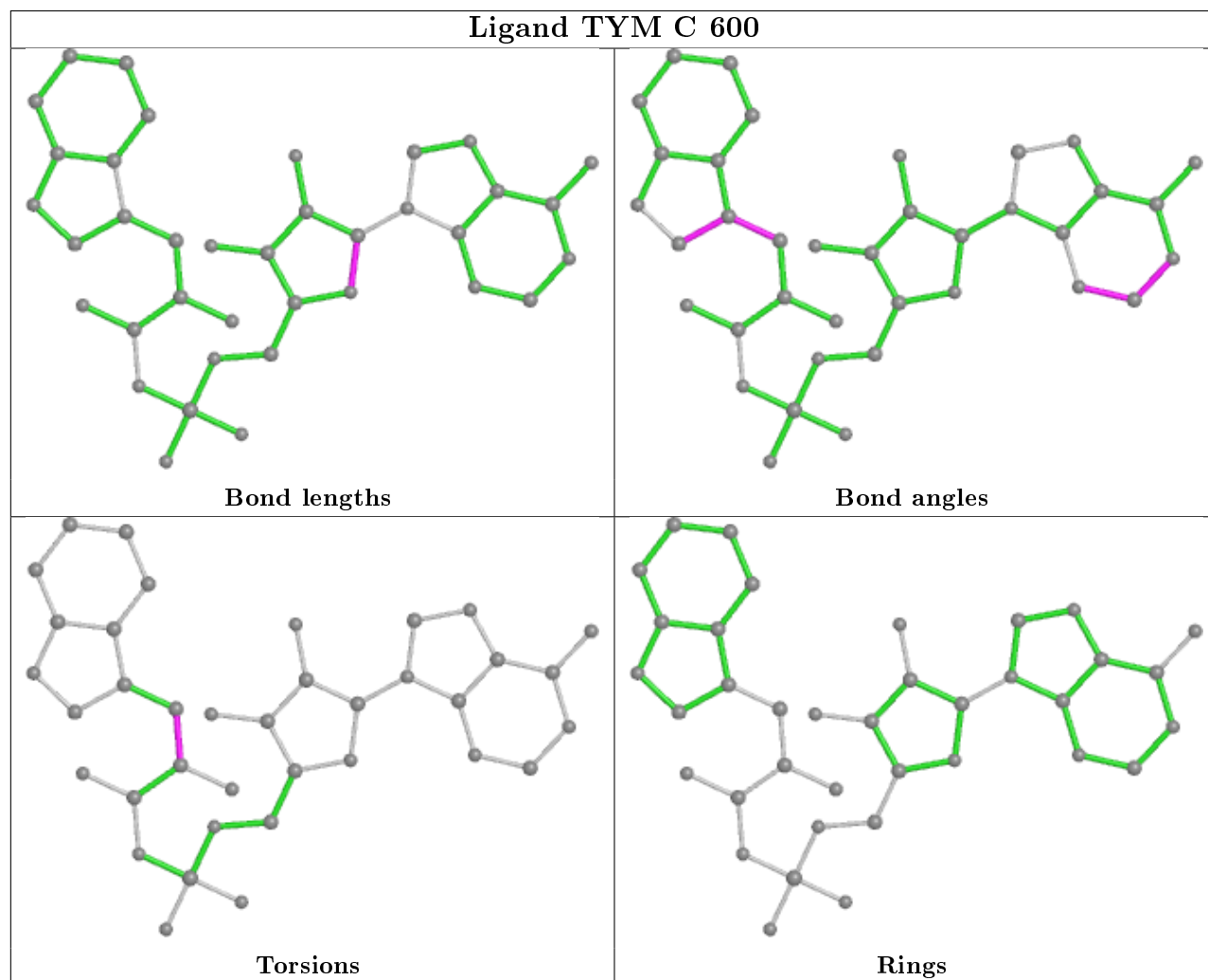
There are no ring outliers.

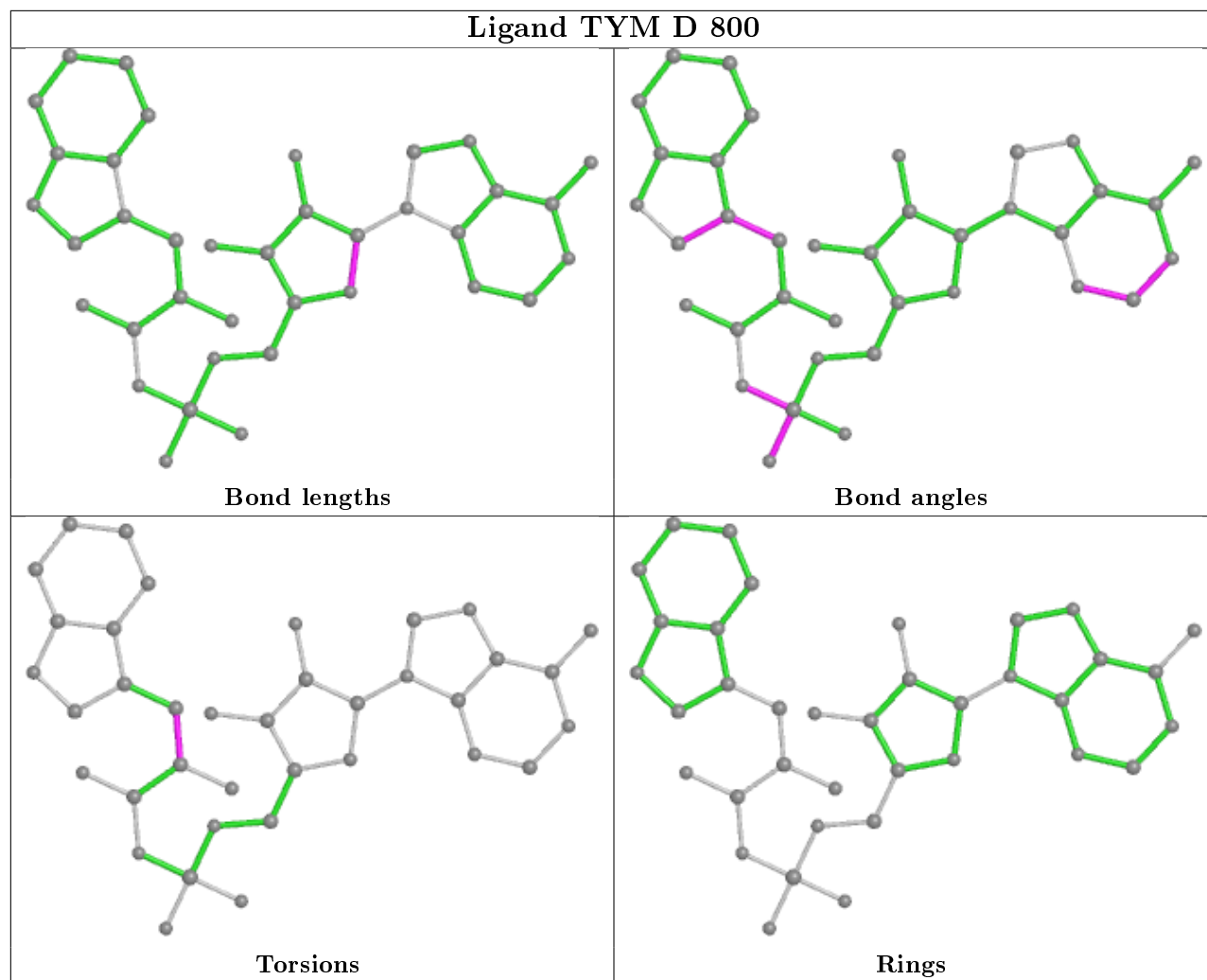
4 monomers are involved in 4 short contacts:

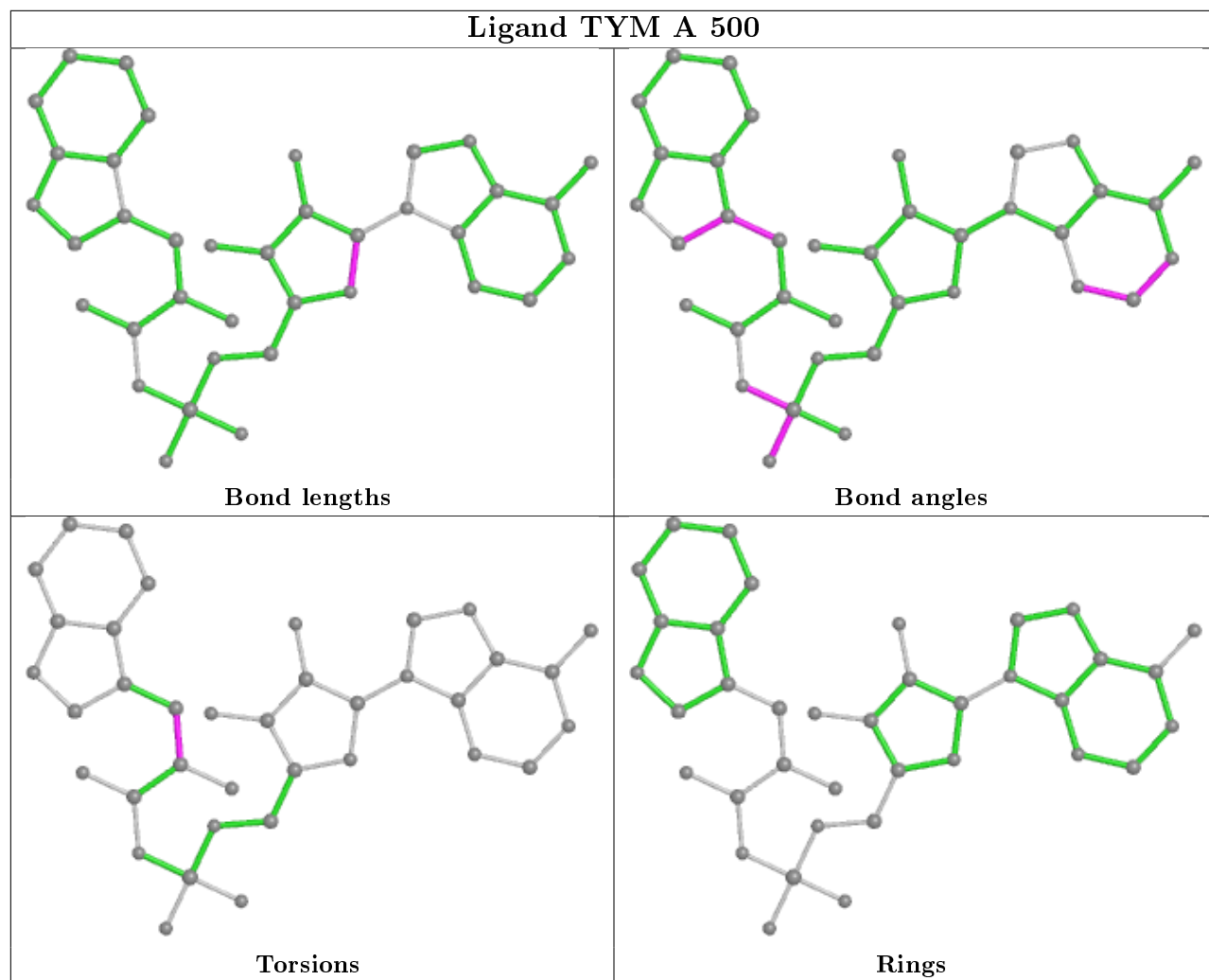
Mol	Chain	Res	Type	Clashes	Symm-Clashes
2	C	600	TYM	1	0
2	B	700	TYM	1	0
3	C	439	SO4	1	0
3	D	440	SO4	1	0

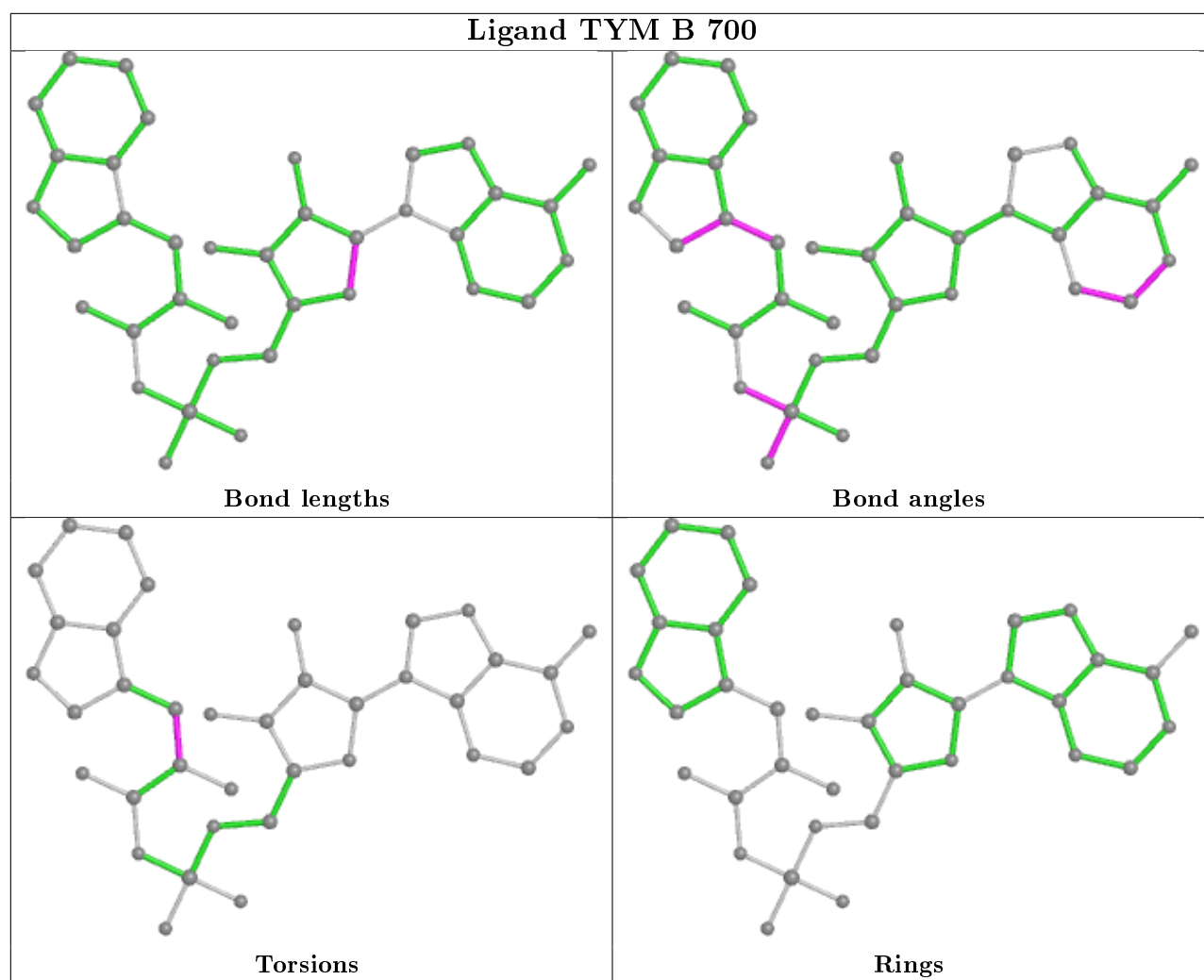
The following is a two-dimensional graphical depiction of Mogul quality analysis of bond lengths, bond angles, torsion angles, and ring geometry for all instances of the Ligand of Interest. In addition, ligands with molecular weight > 250 and outliers as shown on the validation Tables will also be included. For torsion angles, if less than 5% of the Mogul distribution of torsion angles is within 10 degrees of the torsion angle in question, then that torsion angle is considered an outlier. Any bond that is central to one or more torsion angles identified as an outlier by Mogul will be highlighted in the graph. For rings, the root-mean-square deviation (RMSD) between the ring

in question and similar rings identified by Mogul is calculated over all ring torsion angles. If the average RMSD is greater than 60 degrees and the minimal RMSD between the ring in question and any Mogul-identified rings is also greater than 60 degrees, then that ring is considered an outlier. The outliers are highlighted in purple. The color gray indicates Mogul did not find sufficient equivalents in the CSD to analyse the geometry.









5.7 Other polymers [i](#)

There are no such residues in this entry.

5.8 Polymer linkage issues [i](#)

There are no chain breaks in this entry.

6 Fit of model and data ⓘ

6.1 Protein, DNA and RNA chains ⓘ

In the following table, the column labelled ‘#RSRZ> 2’ contains the number (and percentage) of RSRZ outliers, followed by percent RSRZ outliers for the chain as percentile scores relative to all X-ray entries and entries of similar resolution. The OWAB column contains the minimum, median, 95th percentile and maximum values of the occupancy-weighted average B-factor per residue. The column labelled ‘Q< 0.9’ lists the number of (and percentage) of residues with an average occupancy less than 0.9.

Mol	Chain	Analysed	<RSRZ>	#RSRZ>2	OWAB(Å ²)	Q<0.9
1	A	409/438 (93%)	-0.31	7 (1%) 70 66	31, 44, 78, 124	0
1	B	405/438 (92%)	-0.17	9 (2%) 62 56	30, 54, 87, 132	0
1	C	403/438 (92%)	-0.24	8 (1%) 65 60	32, 47, 75, 135	0
1	D	409/438 (93%)	-0.18	10 (2%) 59 53	38, 55, 87, 138	0
All	All	1626/1752 (92%)	-0.22	34 (2%) 63 58	30, 50, 84, 138	0

All (34) RSRZ outliers are listed below:

Mol	Chain	Res	Type	RSRZ
1	B	21	ASP	4.5
1	B	22	VAL	3.9
1	A	301	ASP	3.9
1	C	38	GLU	3.7
1	A	302	THR	3.3
1	C	302	THR	3.2
1	B	300	ASP	3.2
1	C	300	ASP	3.0
1	D	425	PRO	3.0
1	D	302	THR	3.0
1	A	22	VAL	2.9
1	C	40	GLY	2.9
1	A	21	ASP	2.9
1	C	39	GLN	2.8
1	D	424	LYS	2.8
1	D	420	LEU	2.7
1	D	69	GLN	2.7
1	C	36	VAL	2.7
1	C	41	ARG	2.7
1	B	37	ASP	2.6
1	C	425	PRO	2.5

Continued on next page...

Continued from previous page...

Mol	Chain	Res	Type	RSRZ
1	A	300	ASP	2.5
1	B	39	GLN	2.4
1	B	40	GLY	2.4
1	D	413	VAL	2.4
1	D	72	GLY	2.3
1	A	420	LEU	2.2
1	B	69	GLN	2.2
1	A	17	LEU	2.1
1	D	18	LYS	2.1
1	D	68	LYS	2.1
1	B	41	ARG	2.1
1	D	21	ASP	2.1
1	B	42	ALA	2.0

6.2 Non-standard residues in protein, DNA, RNA chains [i](#)

There are no non-standard protein/DNA/RNA residues in this entry.

6.3 Carbohydrates [i](#)

There are no carbohydrates in this entry.

6.4 Ligands [i](#)

In the following table, the Atoms column lists the number of modelled atoms in the group and the number defined in the chemical component dictionary. The B-factors column lists the minimum, median, 95th percentile and maximum values of B factors of atoms in the group. The column labelled 'Q< 0.9' lists the number of atoms with occupancy less than 0.9.

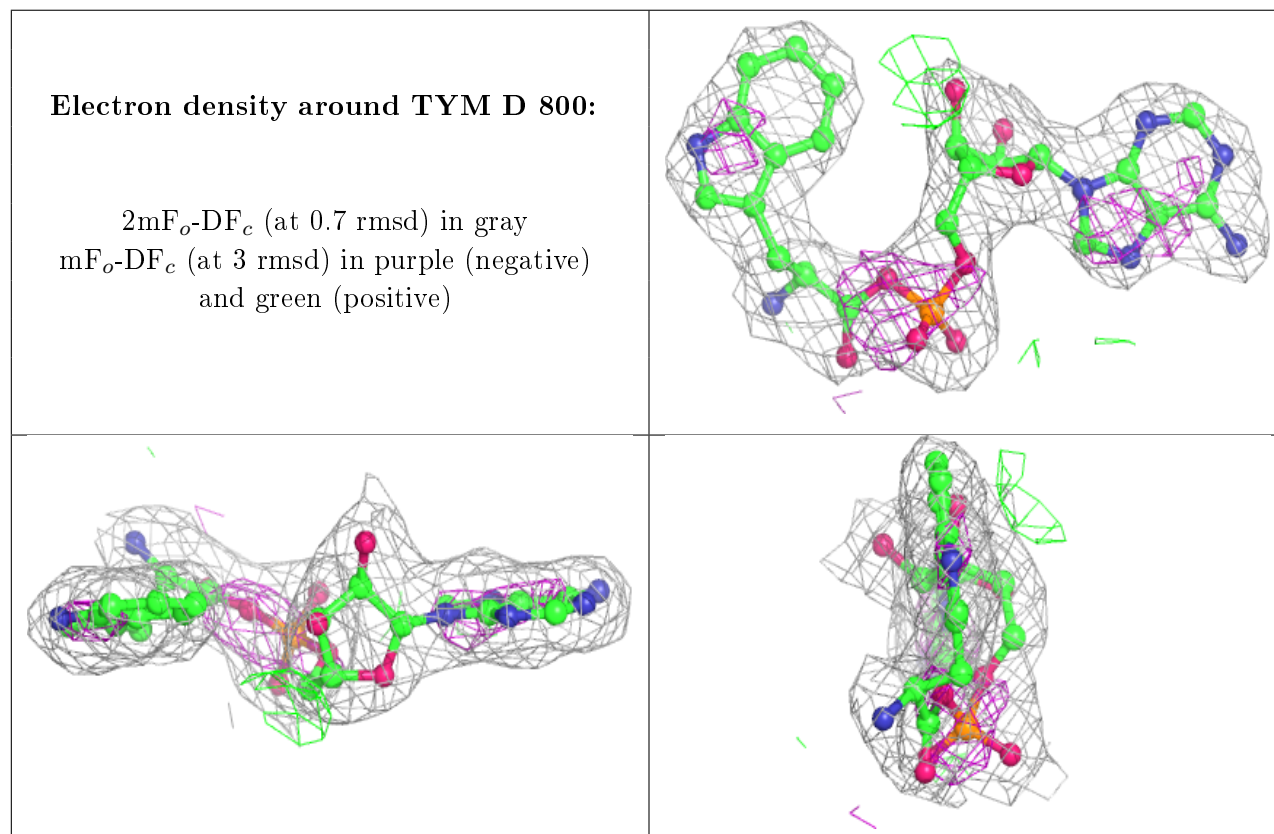
Mol	Type	Chain	Res	Atoms	RSCC	RSR	B-factors(Å ²)	Q<0.9
3	SO4	A	439	5/5	0.71	0.27	83,90,91,91	5
3	SO4	D	439	5/5	0.81	0.25	75,80,81,81	5
3	SO4	C	440	5/5	0.88	0.17	44,54,54,54	5
3	SO4	B	440	5/5	0.93	0.15	45,55,56,56	5
3	SO4	D	440	5/5	0.94	0.17	46,55,55,55	5
3	SO4	B	441	5/5	0.95	0.10	48,55,56,56	5
3	SO4	D	441	5/5	0.95	0.11	48,54,55,55	5
3	SO4	A	441	5/5	0.96	0.17	47,54,54,55	5
3	SO4	A	442	5/5	0.96	0.14	48,55,55,56	5
3	SO4	B	439	5/5	0.96	0.23	64,67,67,67	5

Continued on next page...

Continued from previous page...

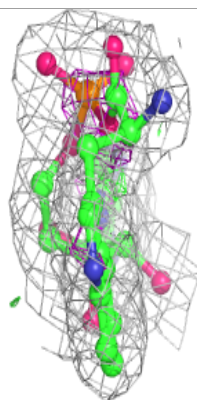
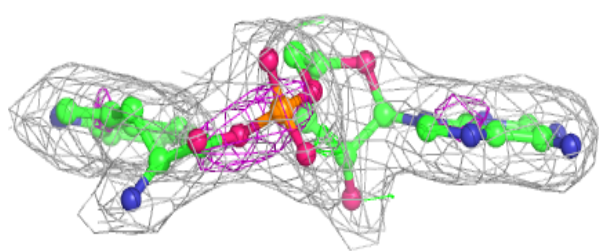
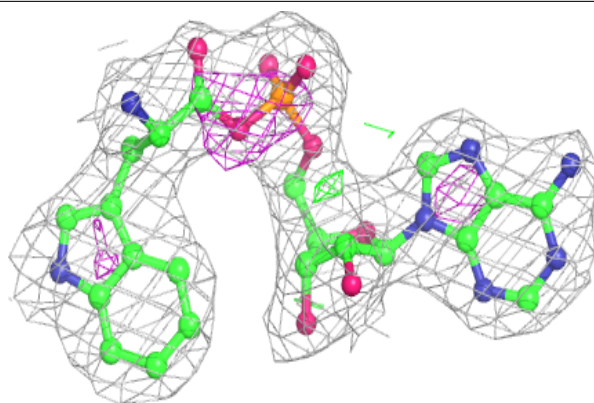
Mol	Type	Chain	Res	Atoms	RSCC	RSR	B-factors(\AA^2)	Q<0.9
3	SO4	A	440	5/5	0.96	0.27	47,57,57,57	5
2	TYM	D	800	37/37	0.96	0.11	37,39,40,40	0
2	TYM	C	600	37/37	0.97	0.12	29,31,31,31	0
2	TYM	B	700	37/37	0.97	0.11	32,36,37,37	0
3	SO4	C	441	5/5	0.97	0.12	33,33,34,37	5
3	SO4	C	439	5/5	0.98	0.17	47,48,49,49	5
2	TYM	A	500	37/37	0.98	0.11	27,29,30,31	0

The following is a graphical depiction of the model fit to experimental electron density of all instances of the Ligand of Interest. In addition, ligands with molecular weight > 250 and outliers as shown on the geometry validation Tables will also be included. Each fit is shown from different orientation to approximate a three-dimensional view.

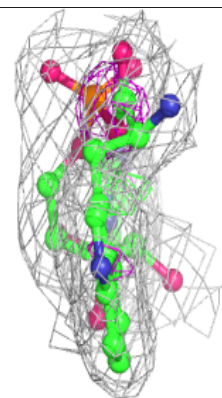
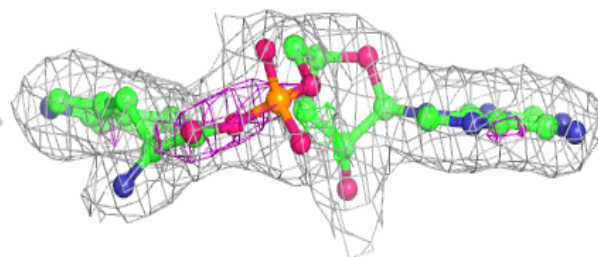
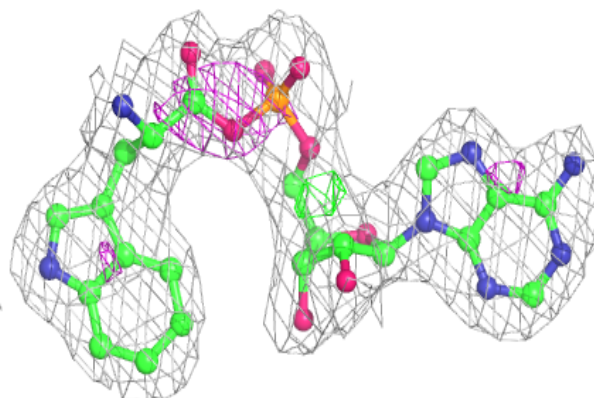


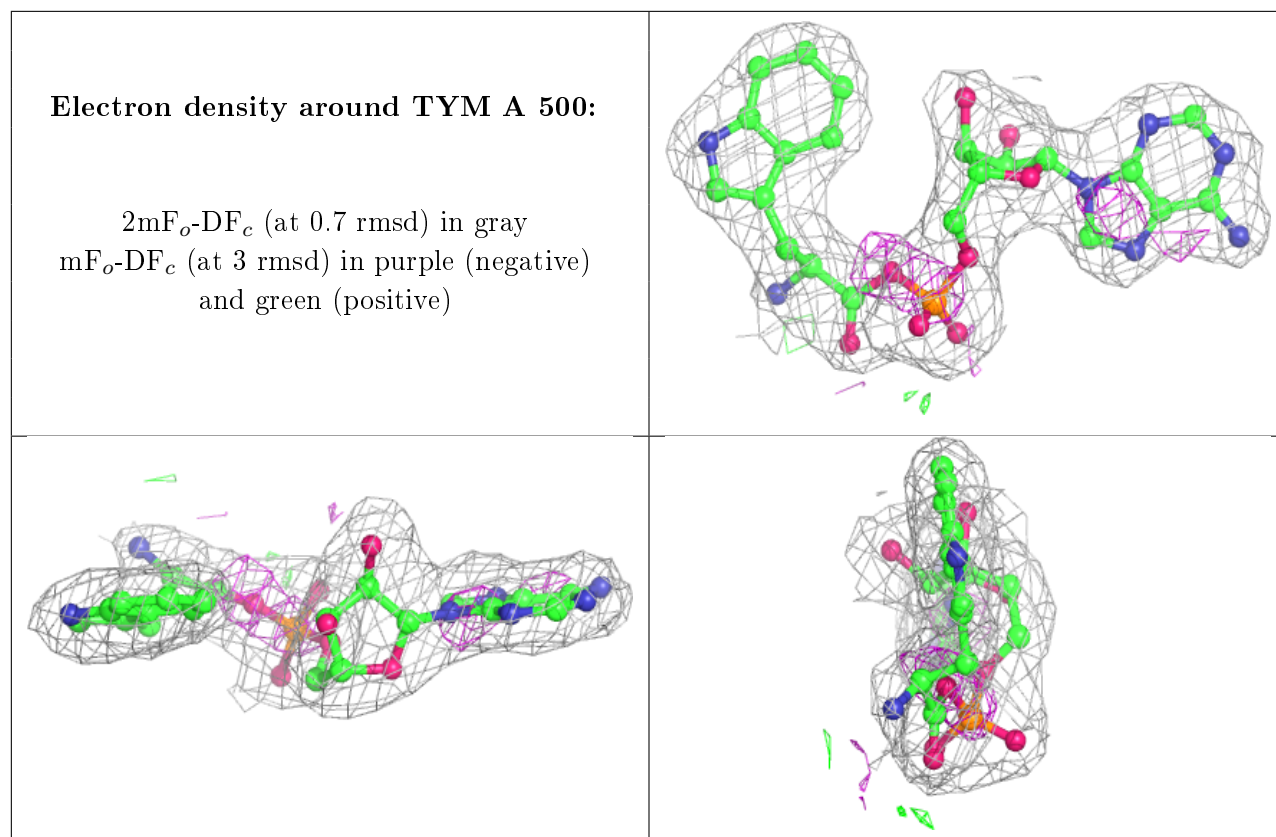
Electron density around TYM C 600:

$2mF_o-DF_c$ (at 0.7 rmsd) in gray
 mF_o-DF_c (at 3 rmsd) in purple (negative)
and green (positive)

**Electron density around TYM B 700:**

$2mF_o-DF_c$ (at 0.7 rmsd) in gray
 mF_o-DF_c (at 3 rmsd) in purple (negative)
and green (positive)





6.5 Other polymers [i](#)

There are no such residues in this entry.