



Full wwPDB EM Validation Report ⓘ

Nov 1, 2022 – 09:02 PM EDT

PDB ID : 5KUH
EMDB ID : EMD-8290
Title : GluK2EM with LY466195
Authors : Meyerson, J.R.; Chittori, S.; Merk, A.; Rao, P.; Han, T.H.; Serpe, M.; Mayer, M.L.; Subramaniam, S.
Deposited on : 2016-07-13
Resolution : 11.60 Å(reported)

This is a Full wwPDB EM Validation Report for a publicly released PDB entry.

We welcome your comments at validation@mail.wwpdb.org

A user guide is available at

<https://www.wwpdb.org/validation/2017/EMValidationReportHelp>
with specific help available everywhere you see the ⓘ symbol.

The types of validation reports are described at

<http://www.wwpdb.org/validation/2017/FAQs#types>.

The following versions of software and data (see [references ⓘ](#)) were used in the production of this report:

EMDB validation analysis : 0.0.1.dev43
Mogul : 1.8.5 (274361), CSD as541be (2020)
MolProbity : 4.02b-467
buster-report : 1.1.7 (2018)
Percentile statistics : 20191225.v01 (using entries in the PDB archive December 25th 2019)
MapQ : 1.9.9
Ideal geometry (proteins) : Engh & Huber (2001)
Ideal geometry (DNA, RNA) : Parkinson et al. (1996)
Validation Pipeline (wwPDB-VP) : 2.31.2

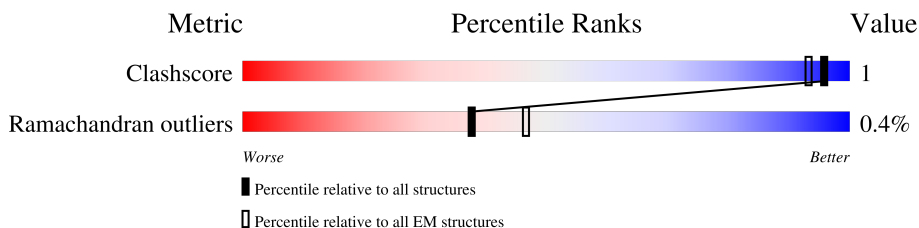
1 Overall quality at a glance

The following experimental techniques were used to determine the structure:

ELECTRON MICROSCOPY





The reported resolution of this entry is 11.60 Å.

Percentile scores (ranging between 0-100) for global validation metrics of the entry are shown in the following graphic. The table shows the number of entries on which the scores are based.



Metric	Whole archive (#Entries)	EM structures (#Entries)
Clashscore	158937	4297
Ramachandran outliers	154571	4023

The table below summarises the geometric issues observed across the polymeric chains and their fit to the map. The red, orange, yellow and green segments of the bar indicate the fraction of residues that contain outliers for ≥ 3 , 2, 1 and 0 types of geometric quality criteria respectively. A grey segment represents the fraction of residues that are not modelled. The numeric value for each fraction is indicated below the corresponding segment, with a dot representing fractions $\leq 5\%$. The upper red bar (where present) indicates the fraction of residues that have poor fit to the EM map (all-atom inclusion $< 40\%$). The numeric value is given above the bar.

Mol	Chain	Length	Quality of chain
1	A	757	 83% • 16%
1	B	757	 83% • 16%
1	C	757	 83% • 16%
1	D	757	 83% • 16%

2 Entry composition

There are 2 unique types of molecules in this entry. The entry contains 12648 atoms, of which 0 are hydrogens and 0 are deuteriums.

In the tables below, the AltConf column contains the number of residues with at least one atom in alternate conformation and the Trace column contains the number of residues modelled with at most 2 atoms.

- Molecule 1 is a protein called Glutamate receptor ionotropic, kainate 2.

Mol	Chain	Residues	Atoms				AltConf	Trace
1	A	636	Total	C	N	O	0	0
			3138	1866	636	636		
1	B	636	Total	C	N	O	0	0
			3138	1866	636	636		
1	C	636	Total	C	N	O	0	0
			3138	1866	636	636		
1	D	636	Total	C	N	O	0	0
			3138	1866	636	636		

There are 24 discrepancies between the modelled and reference sequences:

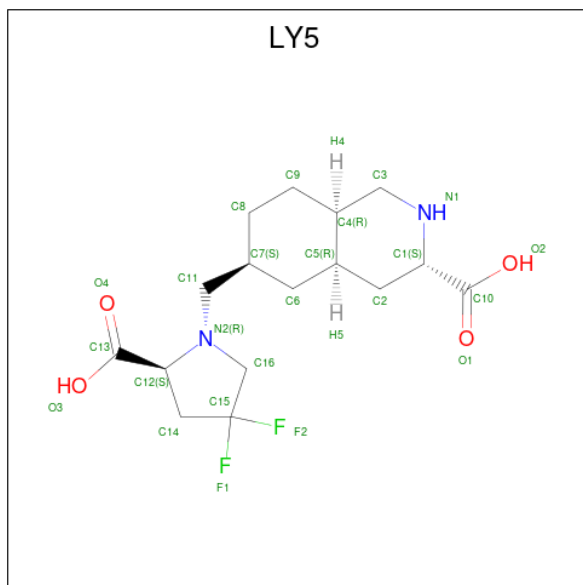
Chain	Residue	Modelled	Actual	Comment	Reference
A	487	THR	ALA	engineered mutation	UNP P42260
A	516	GLY	-	linker	UNP P42260
A	517	THR	-	linker	UNP P42260
A	658	SER	ALA	engineered mutation	UNP P42260
A	690	SER	ASN	engineered mutation	UNP P42260
A	704	LEU	PHE	engineered mutation	UNP P42260
B	487	THR	ALA	engineered mutation	UNP P42260
B	516	GLY	-	linker	UNP P42260
B	517	THR	-	linker	UNP P42260
B	658	SER	ALA	engineered mutation	UNP P42260
B	690	SER	ASN	engineered mutation	UNP P42260
B	704	LEU	PHE	engineered mutation	UNP P42260
C	487	THR	ALA	engineered mutation	UNP P42260
C	516	GLY	-	linker	UNP P42260
C	517	THR	-	linker	UNP P42260
C	658	SER	ALA	engineered mutation	UNP P42260
C	690	SER	ASN	engineered mutation	UNP P42260
C	704	LEU	PHE	engineered mutation	UNP P42260
D	487	THR	ALA	engineered mutation	UNP P42260
D	516	GLY	-	linker	UNP P42260
D	517	THR	-	linker	UNP P42260
D	658	SER	ALA	engineered mutation	UNP P42260

Continued on next page...

Continued from previous page...

Chain	Residue	Modelled	Actual	Comment	Reference
D	690	SER	ASN	engineered mutation	UNP P42260
D	704	LEU	PHE	engineered mutation	UNP P42260

- Molecule 2 is (3S,4aR,6S,8aR)-6-{[(2S)-2-carboxy-4,4-difluoropyrrolidin-1-yl]methyl}decahydroisoquinoline-3-carboxylic acid (three-letter code: LY5) (formula: C₁₆H₂₄F₂N₂O₄).

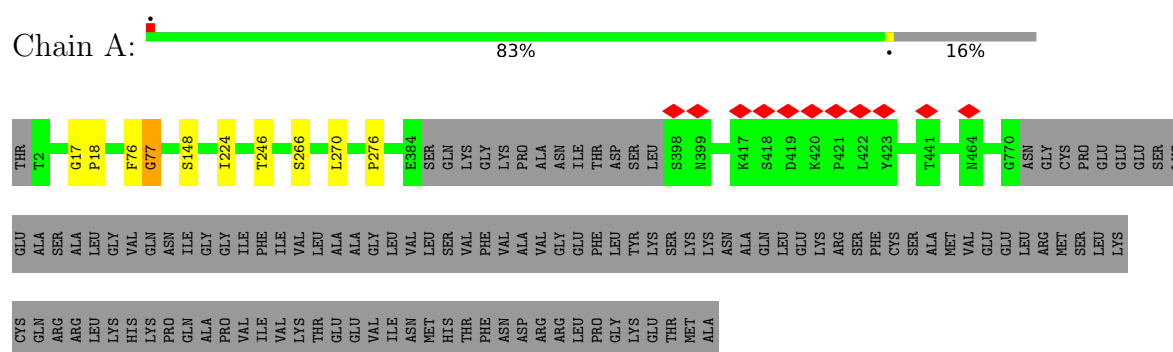


Mol	Chain	Residues	Atoms					AltConf
2	A	1	Total 24	C 16	F 2	N 2	O 4	0
2	B	1	Total 24	C 16	F 2	N 2	O 4	0
2	C	1	Total 24	C 16	F 2	N 2	O 4	0
2	D	1	Total 24	C 16	F 2	N 2	O 4	0

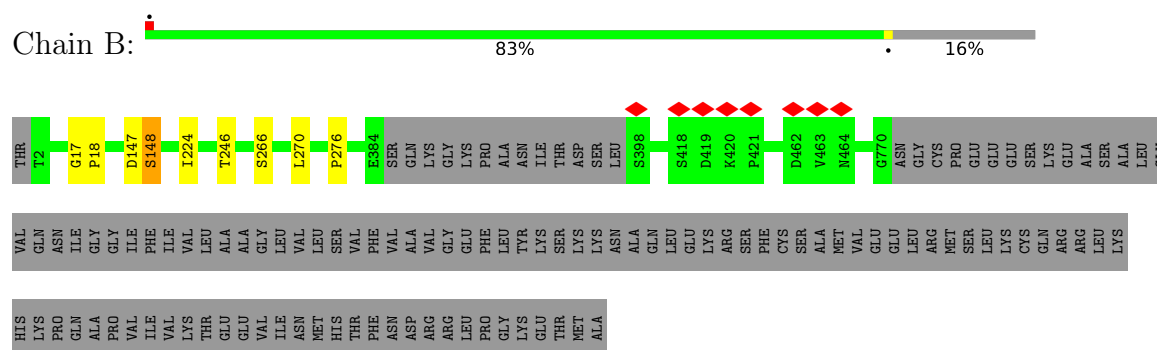
3 Residue-property plots

These plots are drawn for all protein, RNA, DNA and oligosaccharide chains in the entry. The first graphic for a chain summarises the proportions of the various outlier classes displayed in the second graphic. The second graphic shows the sequence view annotated by issues in geometry and atom inclusion in map density. Residues are color-coded according to the number of geometric quality criteria for which they contain at least one outlier: green = 0, yellow = 1, orange = 2 and red = 3 or more. A red diamond above a residue indicates a poor fit to the EM map for this residue (all-atom inclusion < 40%). Stretches of 2 or more consecutive residues without any outlier are shown as a green connector. Residues present in the sample, but not in the model, are shown in grey.

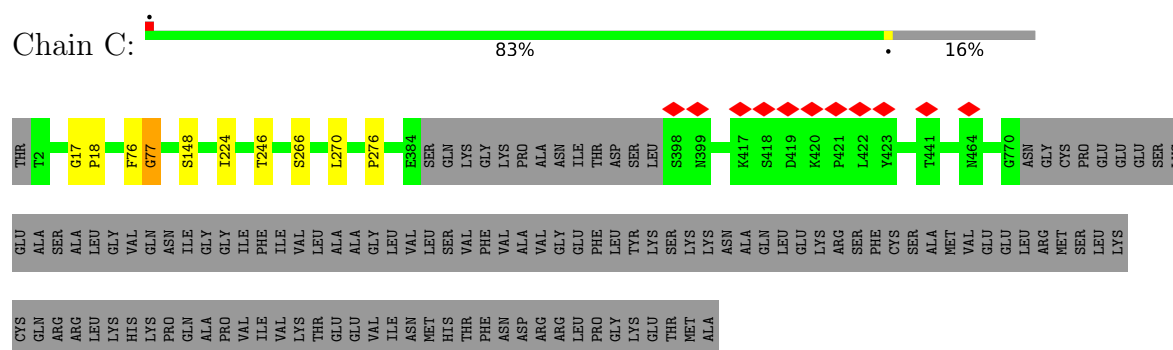
- Molecule 1: Glutamate receptor ionotropic, kainate 2



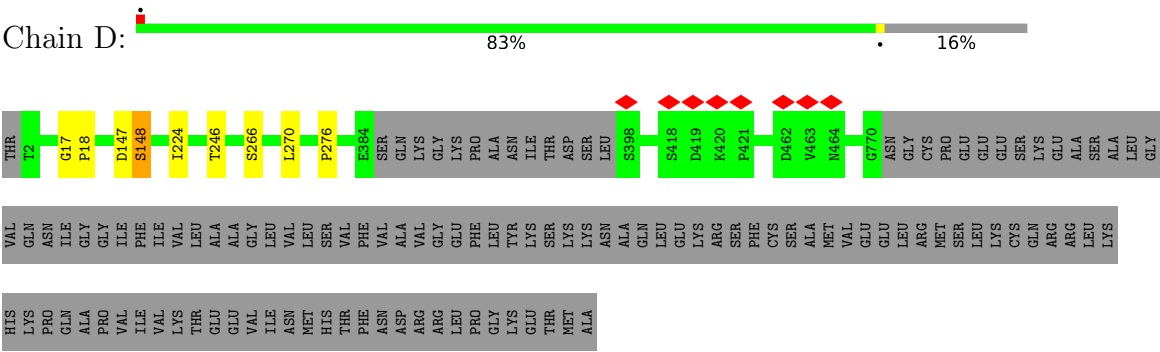
- Molecule 1: Glutamate receptor ionotropic, kainate 2



- Molecule 1: Glutamate receptor ionotropic, kainate 2



● Molecule 1: Glutamate receptor ionotropic, kainate 2



4 Experimental information

Property	Value	Source
EM reconstruction method	SINGLE PARTICLE	Depositor
Imposed symmetry	POINT, Not provided	
Number of particles used	31000	Depositor
Resolution determination method	FSC 0.143 CUT-OFF	Depositor
CTF correction method	PHASE FLIPPING AND AMPLITUDE CORRECTION	Depositor
Microscope	FEI TITAN KRIOS	Depositor
Voltage (kV)	300	Depositor
Electron dose ($e^-/\text{\AA}^2$)	45	Depositor
Minimum defocus (nm)	Not provided	
Maximum defocus (nm)	Not provided	
Magnification	Not provided	
Image detector	GATAN K2 SUMMIT (4k x 4k)	Depositor
Maximum map value	0.031	Depositor
Minimum map value	-0.006	Depositor
Average map value	0.000	Depositor
Map value standard deviation	0.002	Depositor
Recommended contour level	0.00704	Depositor
Map size (Å)	397.2, 397.2, 397.2	wwPDB
Map dimensions	300, 300, 300	wwPDB
Map angles (°)	90.0, 90.0, 90.0	wwPDB
Pixel spacing (Å)	1.324, 1.324, 1.324	Depositor

5 Model quality [i](#)

5.1 Standard geometry [i](#)

Bond lengths and bond angles in the following residue types are not validated in this section: LY5

The Z score for a bond length (or angle) is the number of standard deviations the observed value is removed from the expected value. A bond length (or angle) with $|Z| > 5$ is considered an outlier worth inspection. RMSZ is the root-mean-square of all Z scores of the bond lengths (or angles).

Mol	Chain	Bond lengths		Bond angles	
		RMSZ	$\# Z > 5$	RMSZ	$\# Z > 5$
1	A	0.43	0/3136	0.57	0/4362
1	B	0.43	0/3136	0.58	0/4362
1	C	0.43	0/3136	0.58	0/4362
1	D	0.43	0/3136	0.58	0/4362
All	All	0.43	0/12544	0.58	0/17448

There are no bond length outliers.

There are no bond angle outliers.

There are no chirality outliers.

There are no planarity outliers.

5.2 Too-close contacts [i](#)

In the following table, the Non-H and H(model) columns list the number of non-hydrogen atoms and hydrogen atoms in the chain respectively. The H(added) column lists the number of hydrogen atoms added and optimized by MolProbity. The Clashes column lists the number of clashes within the asymmetric unit, whereas Symm-Clashes lists symmetry-related clashes.

Mol	Chain	Non-H	H(model)	H(added)	Clashes	Symm-Clashes
1	A	3138	0	1398	4	0
1	B	3138	0	1398	4	0
1	C	3138	0	1398	4	0
1	D	3138	0	1398	4	0
2	A	24	0	22	0	0
2	B	24	0	22	0	0
2	C	24	0	22	0	0
2	D	24	0	22	0	0
All	All	12648	0	5680	16	0

The all-atom clashscore is defined as the number of clashes found per 1000 atoms (including hydrogen atoms). The all-atom clashscore for this structure is 1.

All (16) close contacts within the same asymmetric unit are listed below, sorted by their clash magnitude.

Atom-1	Atom-2	Interatomic distance (Å)	Clash overlap (Å)
1:C:76:PHE:O	1:C:77:GLY:O	2.32	0.48
1:A:76:PHE:O	1:A:77:GLY:O	2.32	0.48
1:B:17:GLY:HA2	1:B:18:PRO:O	2.16	0.46
1:A:17:GLY:HA2	1:A:18:PRO:O	2.16	0.45
1:D:17:GLY:HA2	1:D:18:PRO:O	2.16	0.45
1:C:17:GLY:HA2	1:C:18:PRO:O	2.16	0.45
1:B:266:SER:O	1:B:270:LEU:CB	2.65	0.44
1:D:266:SER:O	1:D:270:LEU:CB	2.65	0.44
1:D:224:ILE:HA	1:D:246:THR:O	2.19	0.43
1:A:224:ILE:HA	1:A:246:THR:O	2.19	0.43
1:C:224:ILE:HA	1:C:246:THR:O	2.19	0.42
1:B:224:ILE:HA	1:B:246:THR:O	2.19	0.42
1:C:266:SER:O	1:C:270:LEU:CB	2.67	0.42
1:A:266:SER:O	1:A:270:LEU:CB	2.67	0.42
1:B:147:ASP:O	1:B:148:SER:C	2.59	0.41
1:D:147:ASP:O	1:D:148:SER:C	2.59	0.41

There are no symmetry-related clashes.

5.3 Torsion angles ⓘ

5.3.1 Protein backbone ⓘ

In the following table, the Percentiles column shows the percent Ramachandran outliers of the chain as a percentile score with respect to all PDB entries followed by that with respect to all EM entries.

The Analysed column shows the number of residues for which the backbone conformation was analysed, and the total number of residues.

Mol	Chain	Analysed	Favoured	Allowed	Outliers	Percentiles	
1	A	632/757 (84%)	601 (95%)	28 (4%)	3 (0%)	29	69
1	B	632/757 (84%)	603 (95%)	27 (4%)	2 (0%)	41	77
1	C	632/757 (84%)	601 (95%)	28 (4%)	3 (0%)	29	69
1	D	632/757 (84%)	603 (95%)	27 (4%)	2 (0%)	41	77

Continued on next page...

Continued from previous page...

Mol	Chain	Analysed	Favoured	Allowed	Outliers	Percentiles
All	All	2528/3028 (84%)	2408 (95%)	110 (4%)	10 (0%)	38 72

All (10) Ramachandran outliers are listed below:

Mol	Chain	Res	Type
1	A	276	PRO
1	B	276	PRO
1	C	276	PRO
1	D	276	PRO
1	A	77	GLY
1	A	148	SER
1	B	148	SER
1	C	77	GLY
1	C	148	SER
1	D	148	SER

5.3.2 Protein sidechains [i](#)

There are no protein residues with a non-rotameric sidechain to report in this entry.

5.3.3 RNA [i](#)

There are no RNA molecules in this entry.

5.4 Non-standard residues in protein, DNA, RNA chains [i](#)

There are no non-standard protein/DNA/RNA residues in this entry.

5.5 Carbohydrates [i](#)

There are no monosaccharides in this entry.

5.6 Ligand geometry [i](#)

4 ligands are modelled in this entry.

In the following table, the Counts columns list the number of bonds (or angles) for which Mogul statistics could be retrieved, the number of bonds (or angles) that are observed in the model and the number of bonds (or angles) that are defined in the Chemical Component Dictionary. The

Link column lists molecule types, if any, to which the group is linked. The Z score for a bond length (or angle) is the number of standard deviations the observed value is removed from the expected value. A bond length (or angle) with $|Z| > 2$ is considered an outlier worth inspection. RMSZ is the root-mean-square of all Z scores of the bond lengths (or angles).

Mol	Type	Chain	Res	Link	Bond lengths			Bond angles		
					Counts	RMSZ	# Z > 2	Counts	RMSZ	# Z > 2
2	LY5	D	901	-	24,26,26	1.62	4 (16%)	29,39,39	1.92	10 (34%)
2	LY5	B	901	-	24,26,26	1.62	4 (16%)	29,39,39	1.92	10 (34%)
2	LY5	C	901	-	24,26,26	1.51	3 (12%)	29,39,39	1.91	9 (31%)
2	LY5	A	901	-	24,26,26	1.51	3 (12%)	29,39,39	1.91	9 (31%)

In the following table, the Chirals column lists the number of chiral outliers, the number of chiral centers analysed, the number of these observed in the model and the number defined in the Chemical Component Dictionary. Similar counts are reported in the Torsion and Rings columns. '-' means no outliers of that kind were identified.

Mol	Type	Chain	Res	Link	Chirals	Torsions	Rings
2	LY5	D	901	-	-	5/12/48/48	0/3/3/3
2	LY5	B	901	-	-	5/12/48/48	0/3/3/3
2	LY5	C	901	-	-	3/12/48/48	0/3/3/3
2	LY5	A	901	-	-	3/12/48/48	0/3/3/3

All (14) bond length outliers are listed below:

Mol	Chain	Res	Type	Atoms	Z	Observed(Å)	Ideal(Å)
2	A	901	LY5	F2-C15	-5.71	1.28	1.38
2	C	901	LY5	F2-C15	-5.71	1.28	1.38
2	B	901	LY5	F2-C15	-5.69	1.28	1.38
2	D	901	LY5	F2-C15	-5.69	1.28	1.38
2	A	901	LY5	O3-C13	-2.37	1.22	1.30
2	C	901	LY5	O3-C13	-2.37	1.22	1.30
2	B	901	LY5	O3-C13	-2.36	1.22	1.30
2	D	901	LY5	O3-C13	-2.35	1.22	1.30
2	B	901	LY5	F1-C15	-2.31	1.34	1.38
2	B	901	LY5	O2-C10	-2.30	1.23	1.30
2	D	901	LY5	O2-C10	-2.30	1.23	1.30
2	D	901	LY5	F1-C15	-2.28	1.34	1.38
2	C	901	LY5	F1-C15	-2.27	1.34	1.38
2	A	901	LY5	F1-C15	-2.27	1.34	1.38

All (38) bond angle outliers are listed below:

Mol	Chain	Res	Type	Atoms	Z	Observed(°)	Ideal(°)
2	D	901	LY5	C6-C5-C4	-4.34	103.33	110.55
2	B	901	LY5	C6-C5-C4	-4.33	103.33	110.55
2	A	901	LY5	C6-C5-C4	-4.32	103.36	110.55
2	C	901	LY5	C6-C5-C4	-4.32	103.36	110.55
2	A	901	LY5	C3-C4-C5	3.89	115.87	108.17
2	D	901	LY5	C3-C4-C5	3.87	115.83	108.17
2	C	901	LY5	C3-C4-C5	3.87	115.83	108.17
2	B	901	LY5	C3-C4-C5	3.86	115.81	108.17
2	B	901	LY5	C9-C4-C3	3.13	115.68	111.93
2	D	901	LY5	C9-C4-C3	3.12	115.67	111.93
2	A	901	LY5	C9-C4-C3	3.12	115.67	111.93
2	C	901	LY5	C9-C4-C3	3.12	115.66	111.93
2	A	901	LY5	C8-C9-C4	-3.01	105.47	112.24
2	D	901	LY5	C8-C9-C4	-2.99	105.50	112.24
2	B	901	LY5	C8-C9-C4	-2.99	105.52	112.24
2	C	901	LY5	C8-C9-C4	-2.98	105.53	112.24
2	A	901	LY5	C6-C7-C8	2.91	114.36	109.17
2	B	901	LY5	C6-C7-C8	2.89	114.33	109.17
2	D	901	LY5	C6-C7-C8	2.87	114.30	109.17
2	C	901	LY5	C6-C7-C8	2.87	114.29	109.17
2	D	901	LY5	C9-C4-C5	2.81	118.01	110.44
2	B	901	LY5	C9-C4-C5	2.80	117.99	110.44
2	A	901	LY5	C9-C4-C5	2.79	117.95	110.44
2	C	901	LY5	C9-C4-C5	2.79	117.94	110.44
2	C	901	LY5	C7-C11-N2	2.26	117.39	113.39
2	A	901	LY5	C7-C11-N2	2.26	117.39	113.39
2	B	901	LY5	C7-C11-N2	2.25	117.37	113.39
2	D	901	LY5	C7-C11-N2	2.23	117.34	113.39
2	C	901	LY5	C5-C6-C7	2.23	114.12	110.17
2	B	901	LY5	C5-C6-C7	2.18	114.04	110.17
2	D	901	LY5	C5-C6-C7	2.18	114.04	110.17
2	A	901	LY5	C5-C6-C7	2.18	114.04	110.17
2	C	901	LY5	F1-C15-C14	2.10	117.90	112.91
2	A	901	LY5	F1-C15-C14	2.09	117.87	112.91
2	B	901	LY5	O2-C10-C1	2.09	120.33	113.40
2	D	901	LY5	O2-C10-C1	2.08	120.31	113.40
2	D	901	LY5	F1-C15-C14	2.07	117.83	112.91
2	B	901	LY5	F1-C15-C14	2.07	117.82	112.91

There are no chirality outliers.

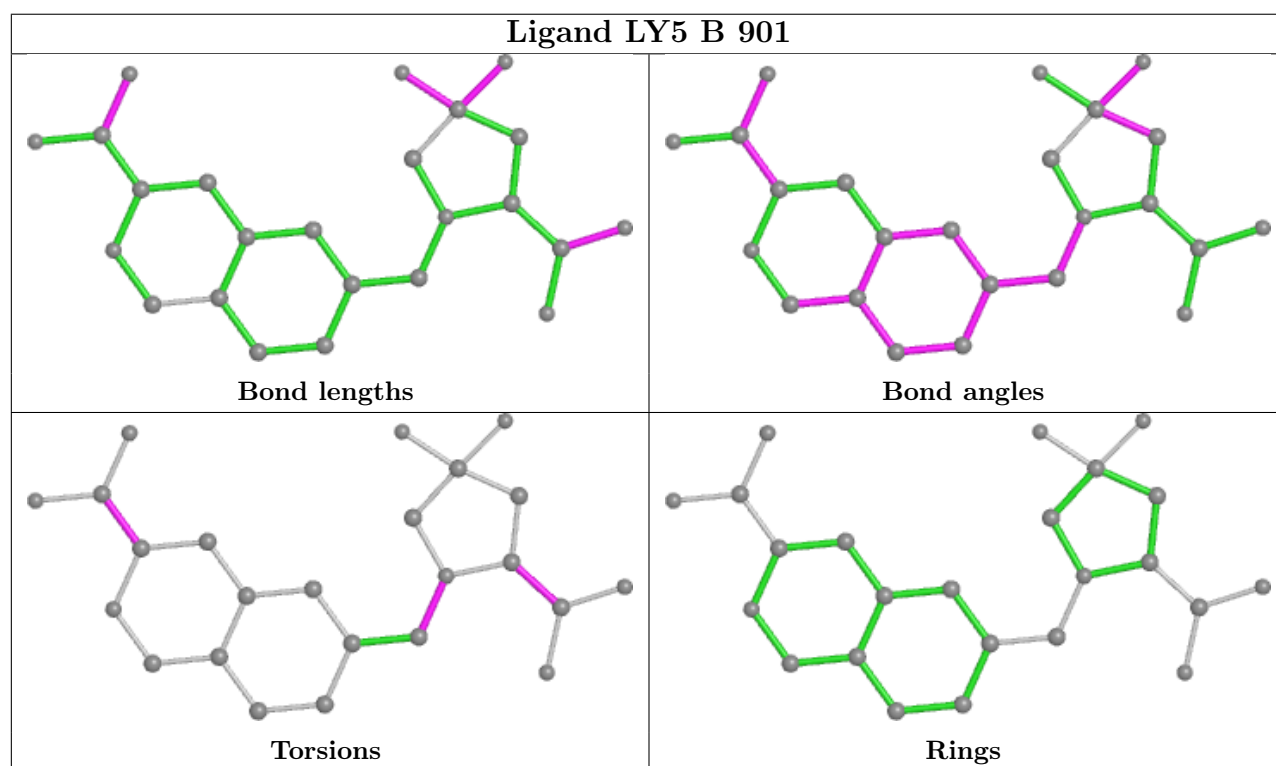
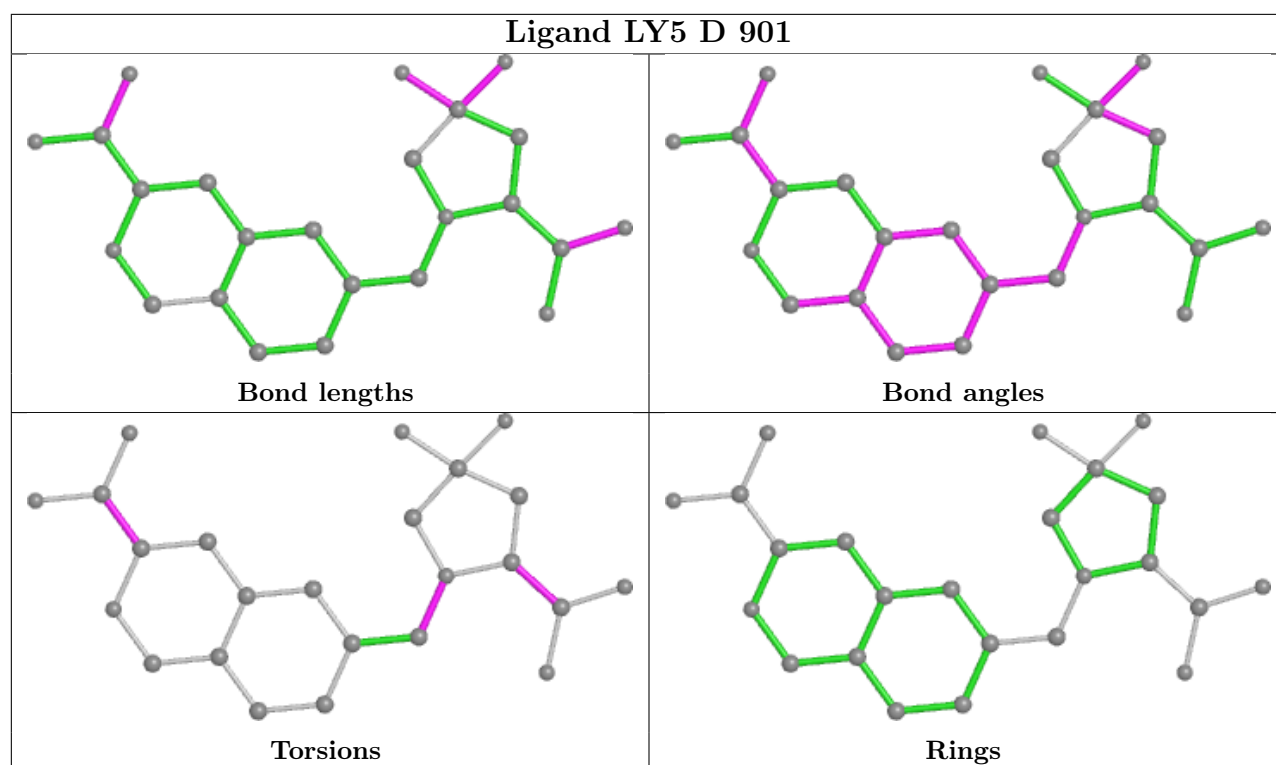
All (16) torsion outliers are listed below:

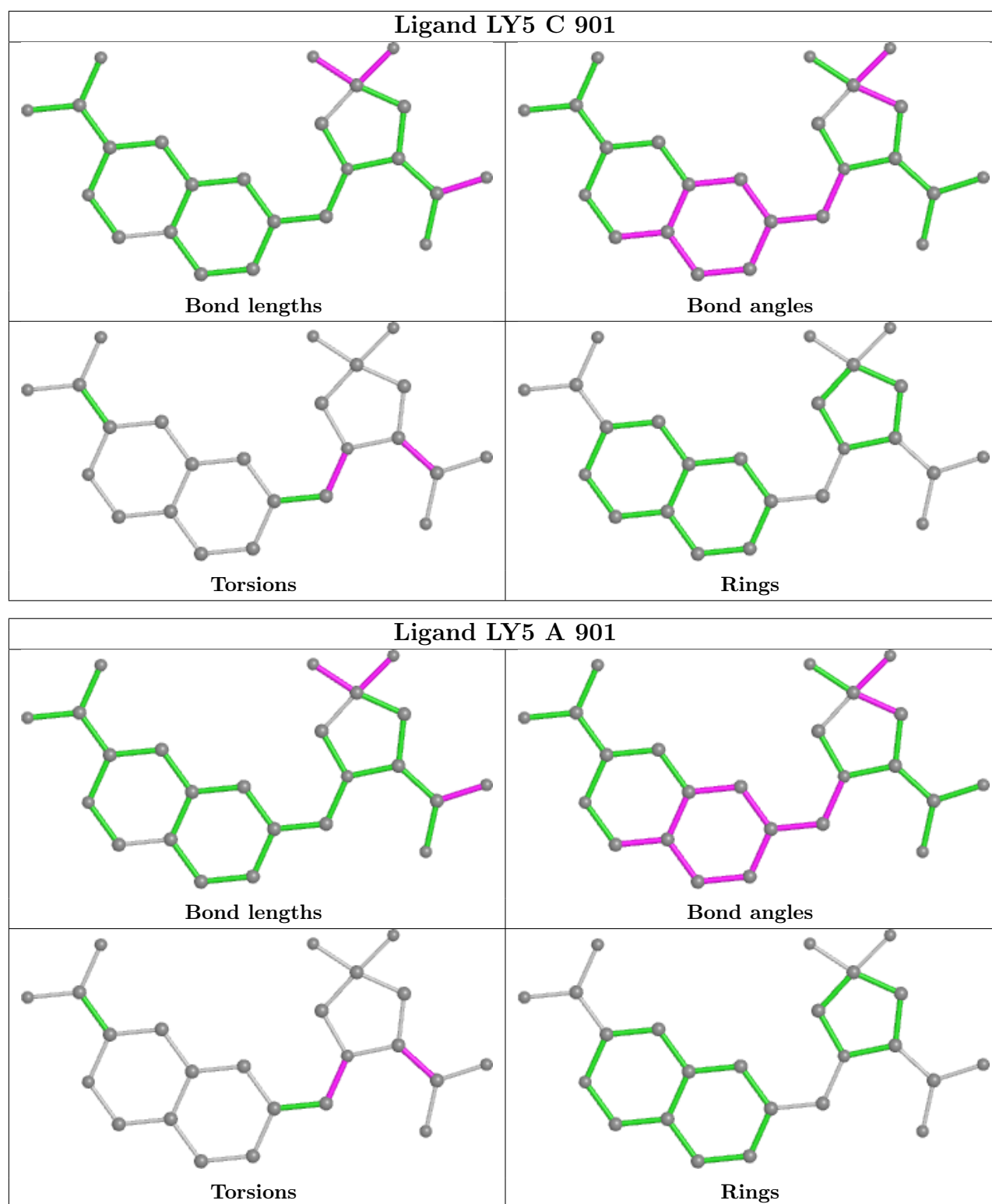
Mol	Chain	Res	Type	Atoms
2	A	901	LY5	N2-C12-C13-O4
2	A	901	LY5	N2-C12-C13-O3
2	B	901	LY5	N2-C12-C13-O4
2	B	901	LY5	N2-C12-C13-O3
2	C	901	LY5	N2-C12-C13-O4
2	C	901	LY5	N2-C12-C13-O3
2	D	901	LY5	N2-C12-C13-O4
2	D	901	LY5	N2-C12-C13-O3
2	A	901	LY5	C7-C11-N2-C16
2	B	901	LY5	C7-C11-N2-C16
2	C	901	LY5	C7-C11-N2-C16
2	D	901	LY5	C7-C11-N2-C16
2	B	901	LY5	N1-C1-C10-O2
2	D	901	LY5	N1-C1-C10-O2
2	B	901	LY5	N1-C1-C10-O1
2	D	901	LY5	N1-C1-C10-O1

There are no ring outliers.

No monomer is involved in short contacts.

The following is a two-dimensional graphical depiction of Mogul quality analysis of bond lengths, bond angles, torsion angles, and ring geometry for all instances of the Ligand of Interest. In addition, ligands with molecular weight > 250 and outliers as shown on the validation Tables will also be included. For torsion angles, if less than 5% of the Mogul distribution of torsion angles is within 10 degrees of the torsion angle in question, then that torsion angle is considered an outlier. Any bond that is central to one or more torsion angles identified as an outlier by Mogul will be highlighted in the graph. For rings, the root-mean-square deviation (RMSD) between the ring in question and similar rings identified by Mogul is calculated over all ring torsion angles. If the average RMSD is greater than 60 degrees and the minimal RMSD between the ring in question and any Mogul-identified rings is also greater than 60 degrees, then that ring is considered an outlier. The outliers are highlighted in purple. The color gray indicates Mogul did not find sufficient equivalents in the CSD to analyse the geometry.





5.7 Other polymers [i](#)

There are no such residues in this entry.

5.8 Polymer linkage issues ⓘ

There are no chain breaks in this entry.

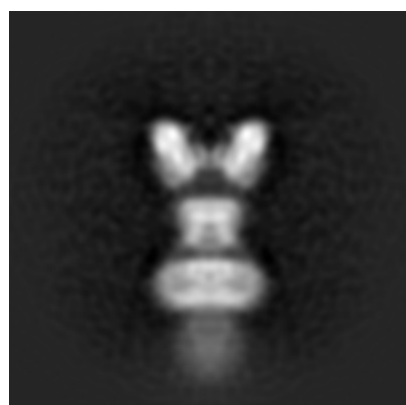
6 Map visualisation [i](#)

This section contains visualisations of the EMDB entry EMD-8290. These allow visual inspection of the internal detail of the map and identification of artifacts.

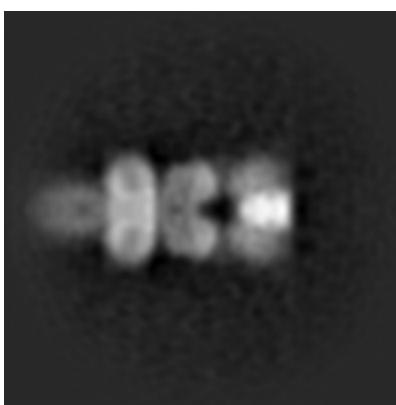
No raw map or half-maps were deposited for this entry and therefore no images, graphs, etc. pertaining to the raw map can be shown.

6.1 Orthogonal projections [i](#)

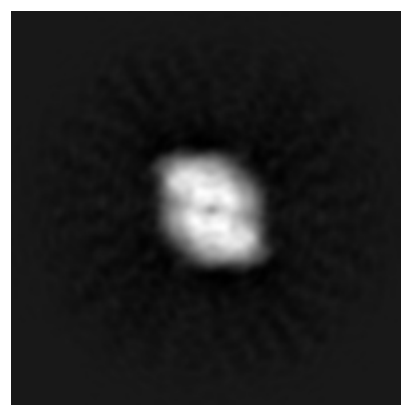
6.1.1 Primary map



X



Y

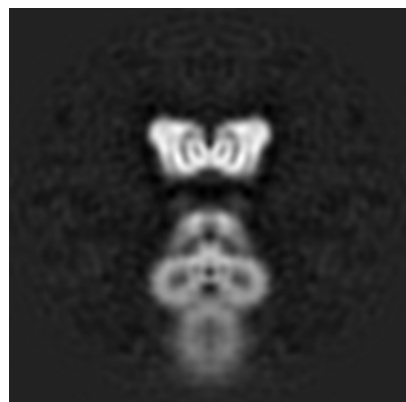


Z

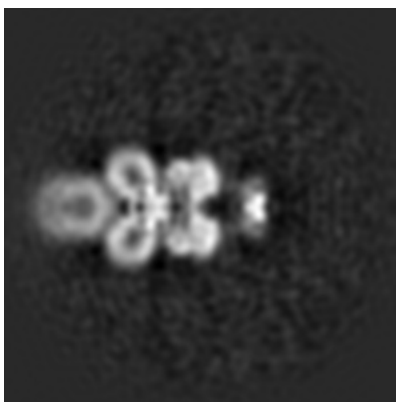
The images above show the map projected in three orthogonal directions.

6.2 Central slices [i](#)

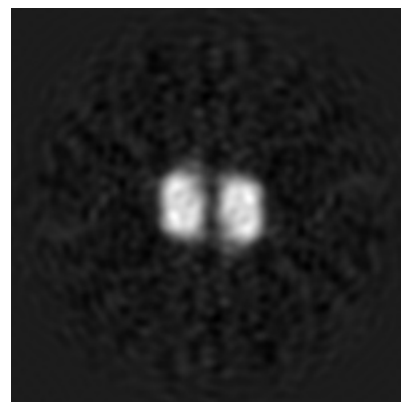
6.2.1 Primary map



X Index: 150



Y Index: 150

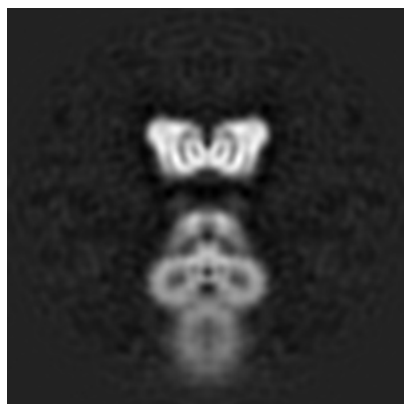


Z Index: 150

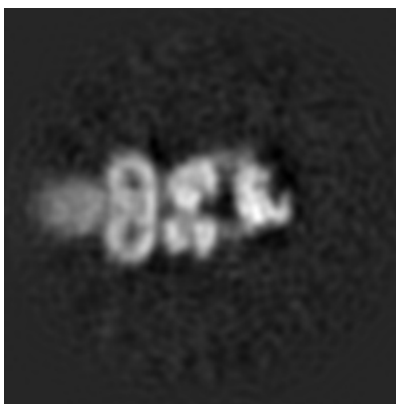
The images above show central slices of the map in three orthogonal directions.

6.3 Largest variance slices [i](#)

6.3.1 Primary map



X Index: 150



Y Index: 137



Z Index: 194

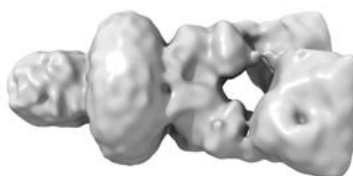
The images above show the largest variance slices of the map in three orthogonal directions.

6.4 Orthogonal surface views [i](#)

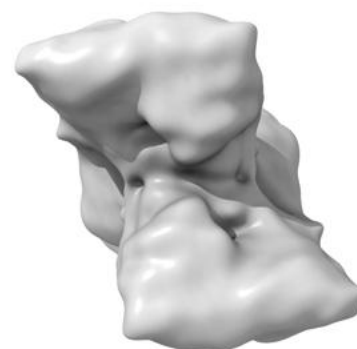
6.4.1 Primary map



X



Y



Z

The images above show the 3D surface view of the map at the recommended contour level 0.00704. These images, in conjunction with the slice images, may facilitate assessment of whether an appropriate contour level has been provided.

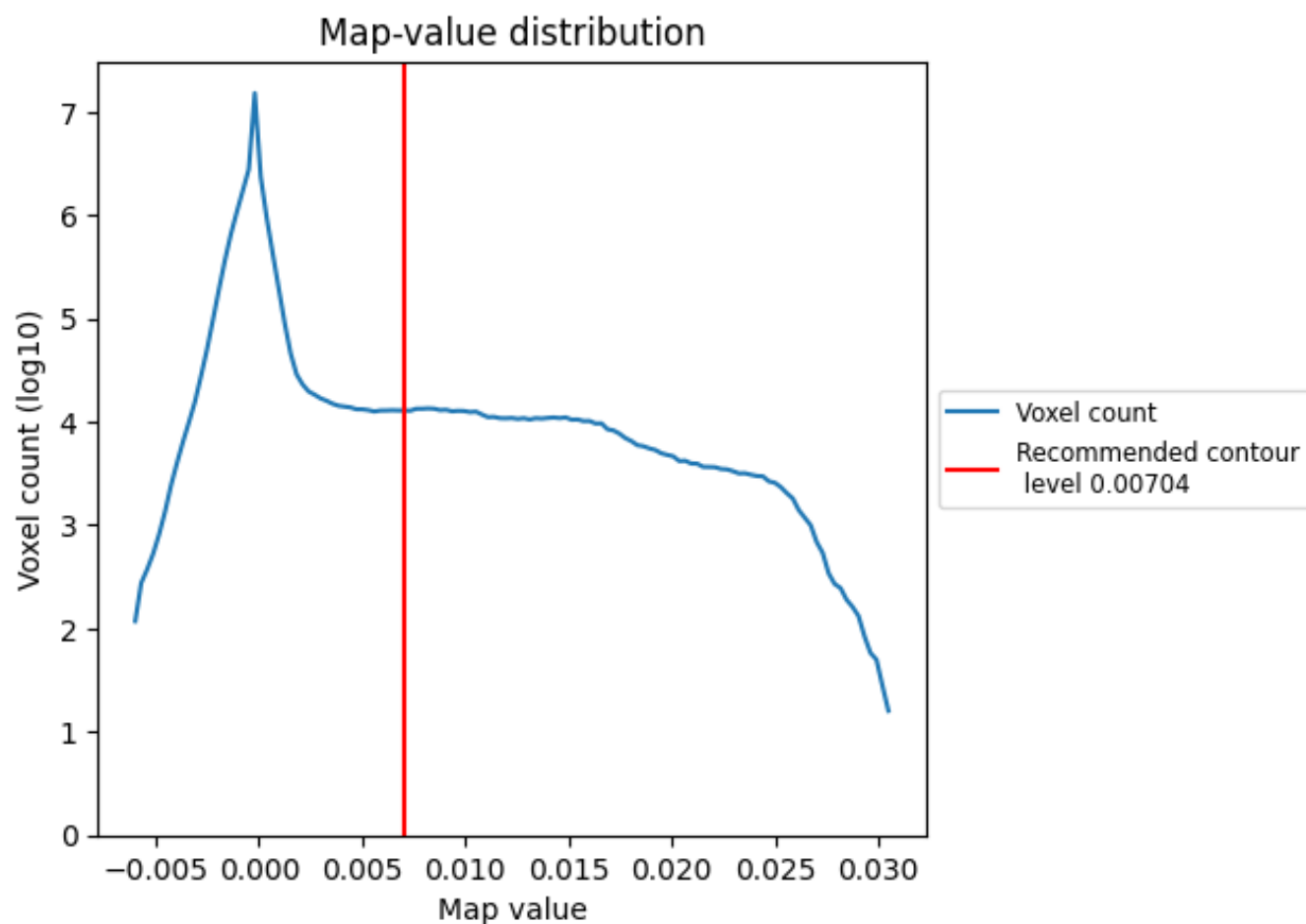
6.5 Mask visualisation

This section was not generated. No masks/segmentation were deposited.

7 Map analysis [i](#)

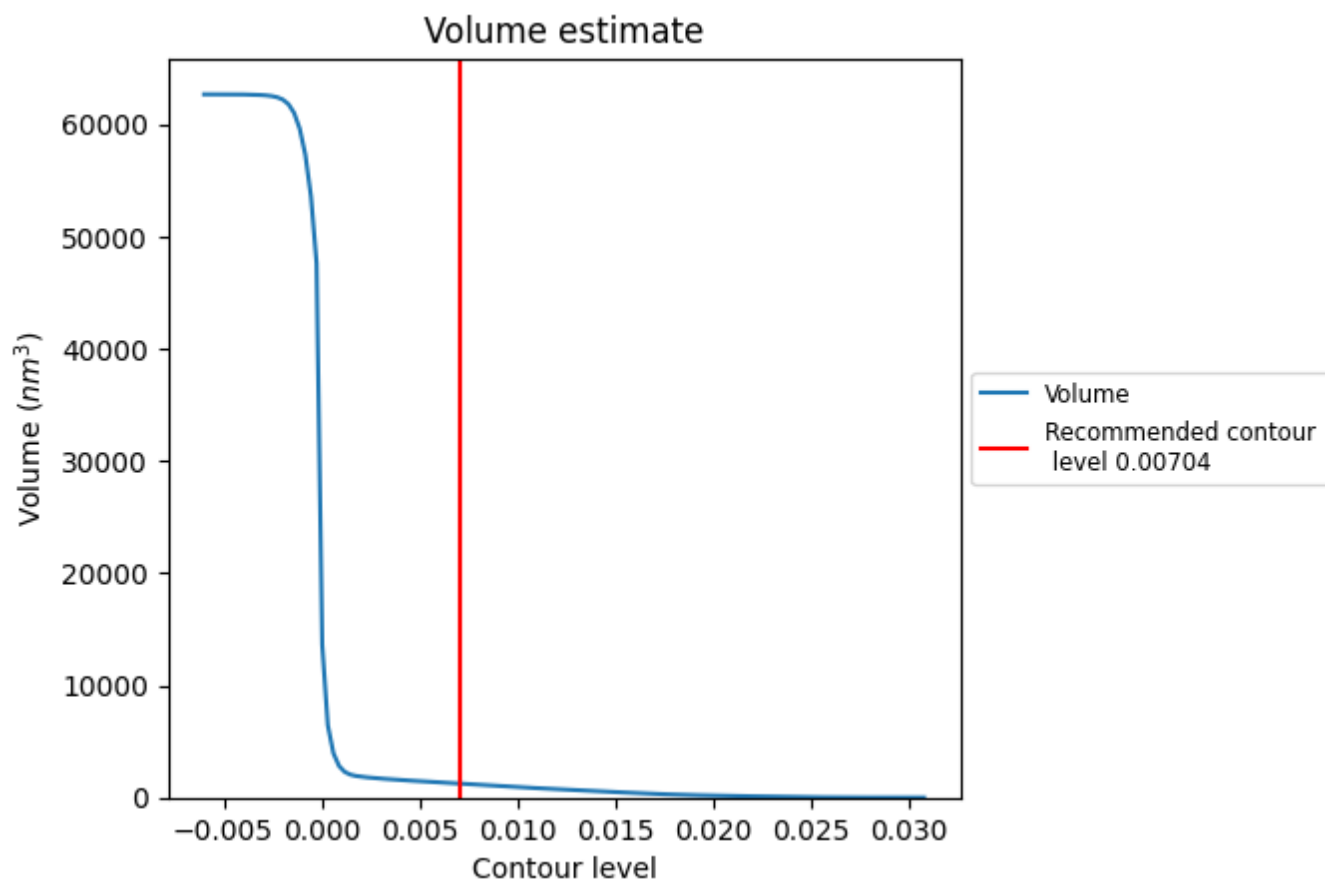
This section contains the results of statistical analysis of the map.

7.1 Map-value distribution [i](#)



The map-value distribution is plotted in 128 intervals along the x-axis. The y-axis is logarithmic. A spike in this graph at zero usually indicates that the volume has been masked.

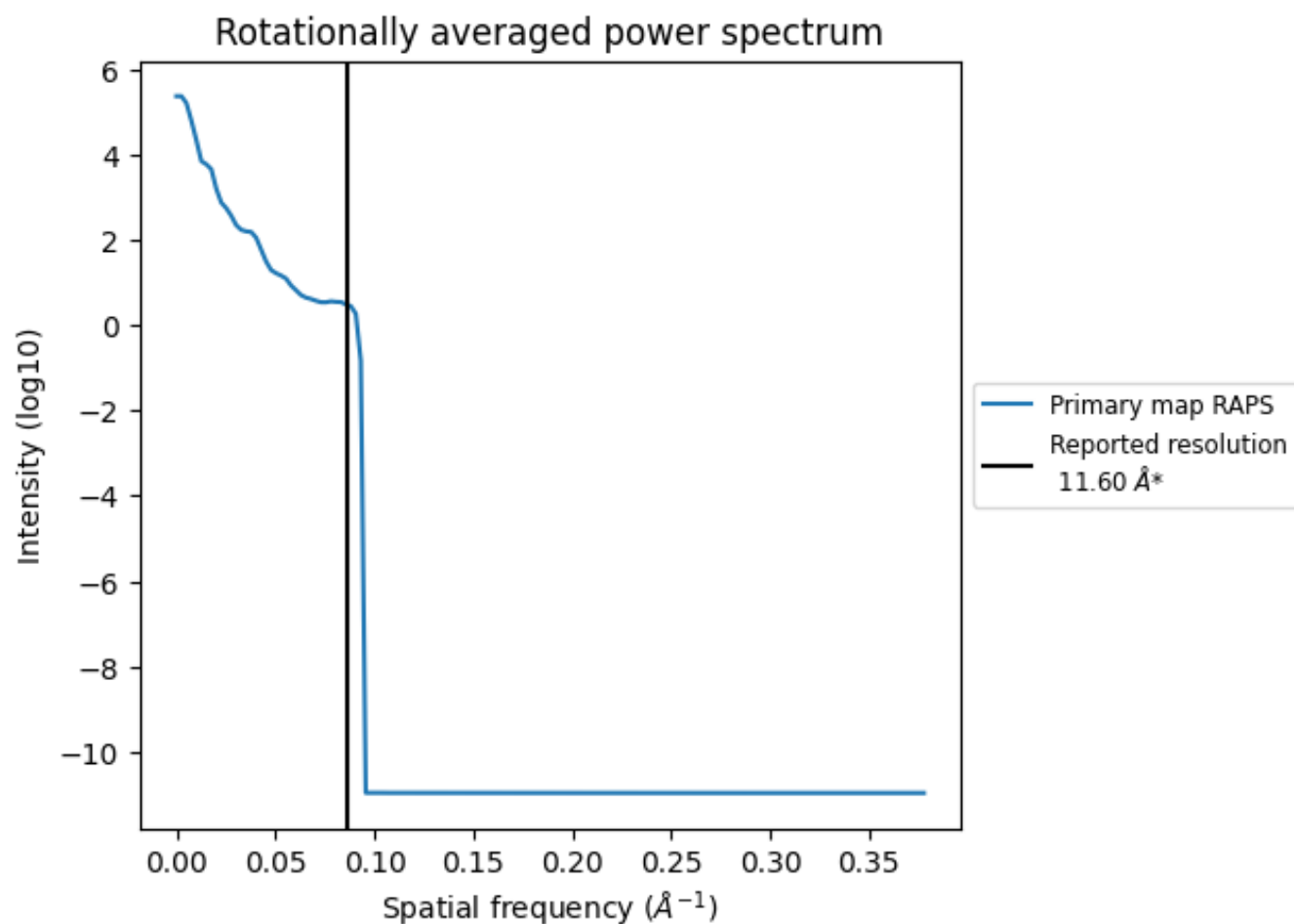
7.2 Volume estimate [i](#)



The volume at the recommended contour level is 1250 nm³; this corresponds to an approximate mass of 1129 kDa.

The volume estimate graph shows how the enclosed volume varies with the contour level. The recommended contour level is shown as a vertical line and the intersection between the line and the curve gives the volume of the enclosed surface at the given level.

7.3 Rotationally averaged power spectrum ⓘ



*Reported resolution corresponds to spatial frequency of 0.086 Å⁻¹

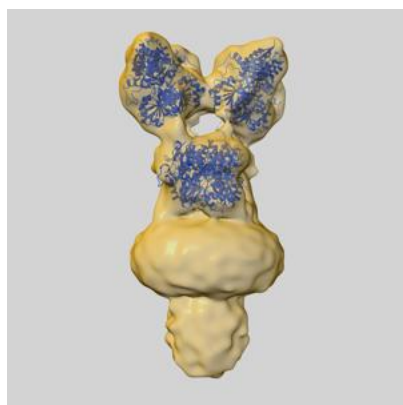
8 Fourier-Shell correlation

This section was not generated. No FSC curve or half-maps provided.

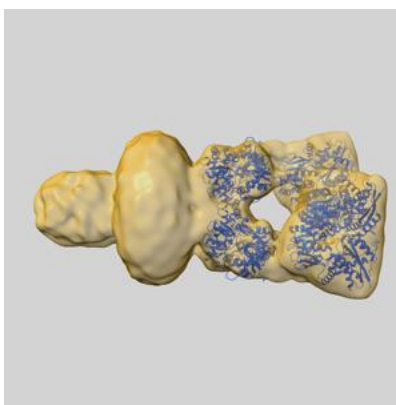
9 Map-model fit [i](#)

This section contains information regarding the fit between EMDB map EMD-8290 and PDB model 5KUH. Per-residue inclusion information can be found in [section 3](#) on [page 5](#).

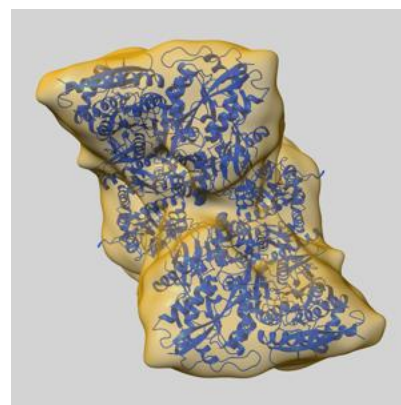
9.1 Map-model overlay [i](#)



X



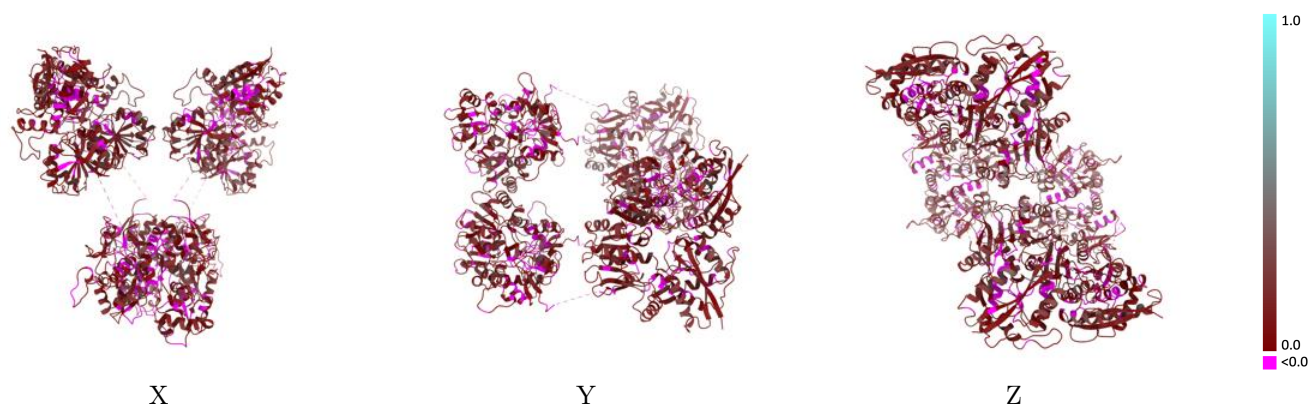
Y



Z

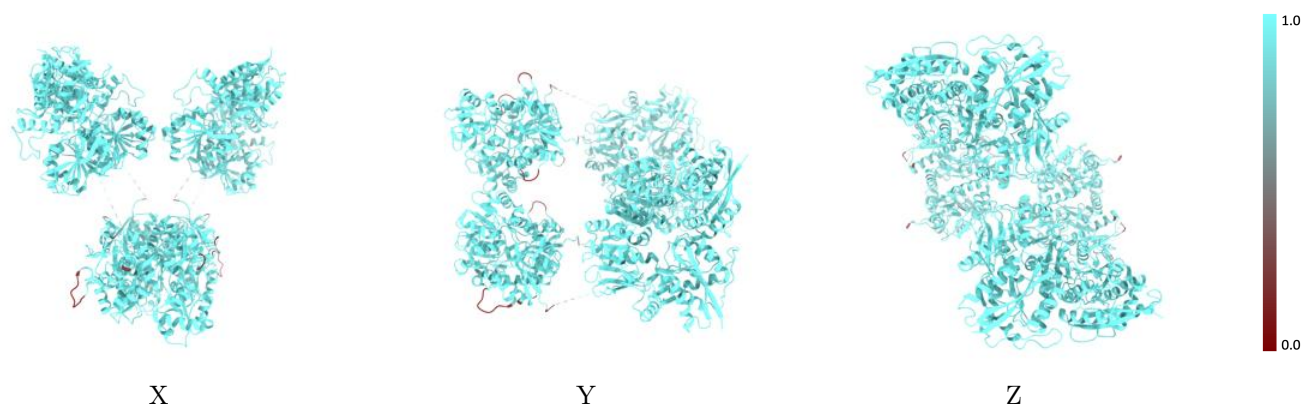
The images above show the 3D surface view of the map at the recommended contour level 0.00704 at 50% transparency in yellow overlaid with a ribbon representation of the model coloured in blue. These images allow for the visual assessment of the quality of fit between the atomic model and the map.

9.2 Q-score mapped to coordinate model [i](#)



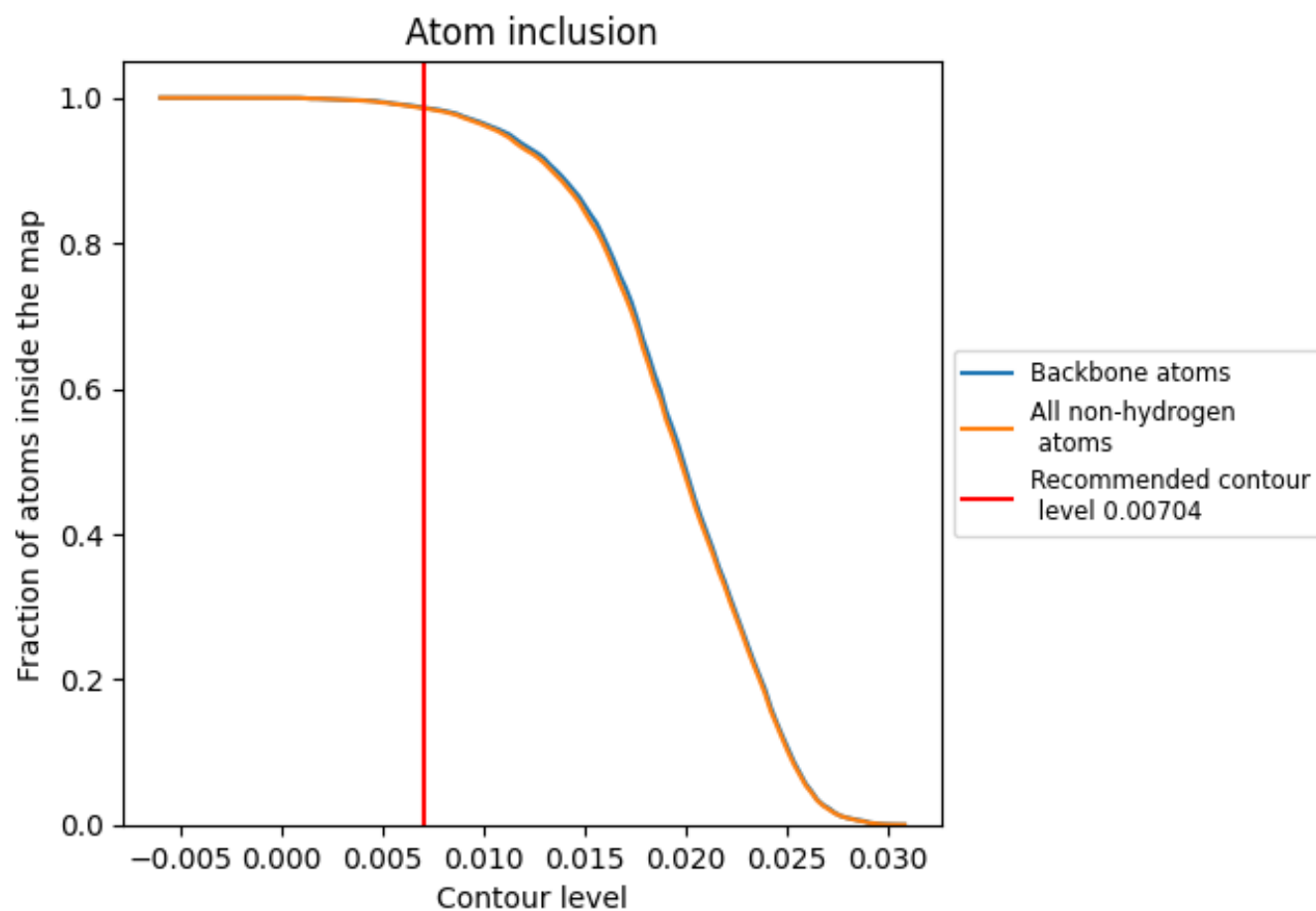
The images above show the model with each residue coloured according its Q-score. This shows their resolvability in the map with higher Q-score values reflecting better resolvability. Please note: Q-score is calculating the resolvability of atoms, and thus high values are only expected at resolutions at which atoms can be resolved. Low Q-score values may therefore be expected for many entries.

9.3 Atom inclusion mapped to coordinate model [i](#)



The images above show the model with each residue coloured according to its atom inclusion. This shows to what extent they are inside the map at the recommended contour level (0.00704).

9.4 Atom inclusion [i](#)



At the recommended contour level, 99% of all backbone atoms, 99% of all non-hydrogen atoms, are inside the map.

9.5 Map-model fit summary ⓘ

The table lists the average atom inclusion at the recommended contour level (0.00704) and Q-score for the entire model and for each chain.

Chain	Atom inclusion	Q-score
All	<div></div> 0.9856	<div></div> 0.1040
A	<div></div> 0.9832	<div></div> 0.1040
B	<div></div> 0.9877	<div></div> 0.1050
C	<div></div> 0.9839	<div></div> 0.1040
D	<div></div> 0.9877	<div></div> 0.1040

