



# wwPDB X-ray Structure Validation Summary Report ⓘ

Oct 3, 2021 – 09:07 AM EDT

PDB ID : 3KYC  
Title : Human SUMO E1 complex with a SUMO1-AMP mimic  
Authors : Lima, C.D.  
Deposited on : 2009-12-05  
Resolution : 2.45 Å(reported)

This is a wwPDB X-ray Structure Validation Summary Report for a publicly released PDB entry.

We welcome your comments at [validation@mail.wwpdb.org](mailto:validation@mail.wwpdb.org)

A user guide is available at

<https://www.wwpdb.org/validation/2017/XrayValidationReportHelp>

with specific help available everywhere you see the ⓘ symbol.

---

The following versions of software and data (see [references ⓘ](#)) were used in the production of this report:

MolProbity : 4.02b-467  
Mogul : 1.8.5 (274361), CSD as541be (2020)  
Xtriage (Phenix) : 1.13  
EDS : 2.23.2  
buster-report : 1.1.7 (2018)  
Percentile statistics : 20191225.v01 (using entries in the PDB archive December 25th 2019)  
Refmac : 5.8.0158  
CCP4 : 7.0.044 (Gargrove)  
Ideal geometry (proteins) : Engh & Huber (2001)  
Ideal geometry (DNA, RNA) : Parkinson et al. (1996)  
Validation Pipeline (wwPDB-VP) : 2.23.2

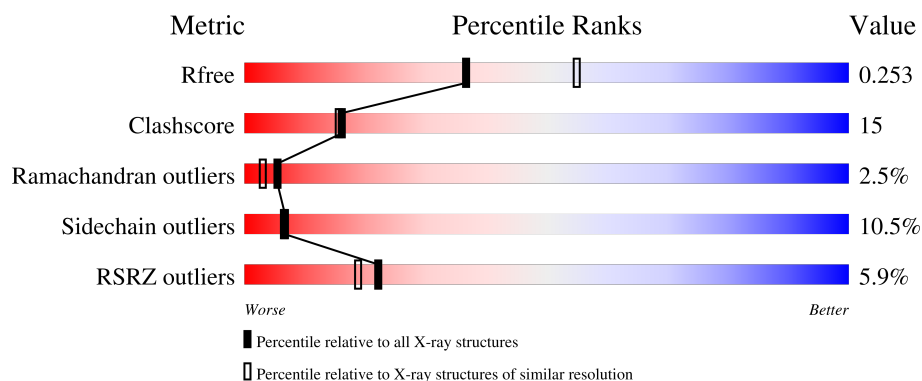
# 1 Overall quality at a glance

The following experimental techniques were used to determine the structure:

*X-RAY DIFFRACTION*

The reported resolution of this entry is 2.45 Å.

Percentile scores (ranging between 0-100) for global validation metrics of the entry are shown in the following graphic. The table shows the number of entries on which the scores are based.



Metric	Whole archive (#Entries)	Similar resolution (#Entries, resolution range(Å))
$R_{free}$	130704	1544 (2.48-2.44)
Clashscore	141614	1613 (2.48-2.44)
Ramachandran outliers	138981	1598 (2.48-2.44)
Sidechain outliers	138945	1598 (2.48-2.44)
RSRZ outliers	127900	1523 (2.48-2.44)

The table below summarises the geometric issues observed across the polymeric chains and their fit to the electron density. The red, orange, yellow and green segments of the lower bar indicate the fraction of residues that contain outliers for  $\geq 3$ , 2, 1 and 0 types of geometric quality criteria respectively. A grey segment represents the fraction of residues that are not modelled. The numeric value for each fraction is indicated below the corresponding segment, with a dot representing fractions  $\leq 5\%$ . The upper red bar (where present) indicates the fraction of residues that have poor fit to the electron density. The numeric value is given above the bar.

Mol	Chain	Length	Quality of chain
1	A	346	
2	B	660	
3	D	97	

## 2 Entry composition

There are 6 unique types of molecules in this entry. The entry contains 7681 atoms, of which 0 are hydrogens and 0 are deuteriums.

In the tables below, the ZeroOcc column contains the number of atoms modelled with zero occupancy, the AltConf column contains the number of residues with at least one atom in alternate conformation and the Trace column contains the number of residues modelled with at most 2 atoms.

- Molecule 1 is a protein called SUMO-activating enzyme subunit 1.

Mol	Chain	Residues	Atoms					ZeroOcc	AltConf	Trace
1	A	313	Total	C	N	O	S	0	0	0
			2445	1549	416	467	13			

- Molecule 2 is a protein called SUMO-activating enzyme subunit 2.

Mol	Chain	Residues	Atoms					ZeroOcc	AltConf	Trace
2	B	548	Total	C	N	O	S	0	0	0
			4320	2738	754	808	20			

There are 21 discrepancies between the modelled and reference sequences:

Chain	Residue	Modelled	Actual	Comment	Reference
B	-19	MET	-	expression tag	UNP Q9UBT2
B	-18	GLY	-	expression tag	UNP Q9UBT2
B	-17	SER	-	expression tag	UNP Q9UBT2
B	-16	SER	-	expression tag	UNP Q9UBT2
B	-15	HIS	-	expression tag	UNP Q9UBT2
B	-14	HIS	-	expression tag	UNP Q9UBT2
B	-13	HIS	-	expression tag	UNP Q9UBT2
B	-12	HIS	-	expression tag	UNP Q9UBT2
B	-11	HIS	-	expression tag	UNP Q9UBT2
B	-10	HIS	-	expression tag	UNP Q9UBT2
B	-9	SER	-	expression tag	UNP Q9UBT2
B	-8	SER	-	expression tag	UNP Q9UBT2
B	-7	GLY	-	expression tag	UNP Q9UBT2
B	-6	LEU	-	expression tag	UNP Q9UBT2
B	-5	VAL	-	expression tag	UNP Q9UBT2
B	-4	PRO	-	expression tag	UNP Q9UBT2
B	-3	ARG	-	expression tag	UNP Q9UBT2
B	-2	GLY	-	expression tag	UNP Q9UBT2
B	-1	SER	-	expression tag	UNP Q9UBT2
B	0	HIS	-	expression tag	UNP Q9UBT2

*Continued on next page...*

*Continued from previous page...*

Chain	Residue	Modelled	Actual	Comment	Reference
B	229	CYS	SER	variant	UNP Q9UBT2

- Molecule 3 is a protein called Small ubiquitin-related modifier 1.

Mol	Chain	Residues	Atoms					ZeroOcc	AltConf	Trace
3	D	79	Total	C	N	O	S	0	0	0
			639	401	110	123	5			

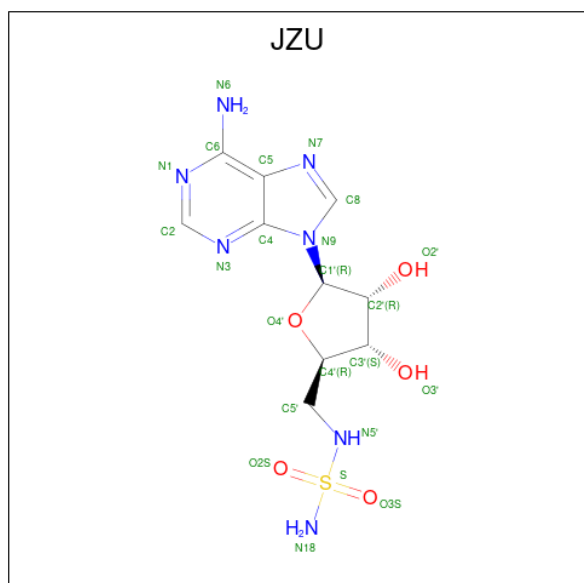
There is a discrepancy between the modelled and reference sequences:

Chain	Residue	Modelled	Actual	Comment	Reference
D	95	CYS	THR	engineered mutation	UNP P63165

- Molecule 4 is ZINC ION (three-letter code: ZN) (formula: Zn).

Mol	Chain	Residues	Atoms		ZeroOcc	AltConf
4	B	1	Total	Zn	0	0
			1	1		

- Molecule 5 is 5'-deoxy-5'-(sulfamoylamino)adenosine (three-letter code: JZU) (formula: C<sub>10</sub>H<sub>15</sub>N<sub>7</sub>O<sub>5</sub>S).



Mol	Chain	Residues	Atoms					ZeroOcc	AltConf
5	D	1	Total	C	N	O	S	0	0
			23	10	7	5	1		

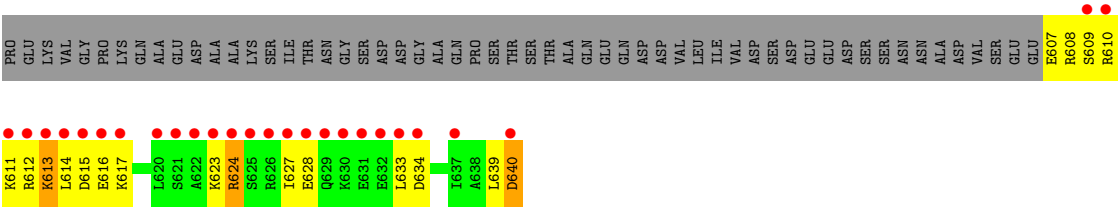
- Molecule 6 is water.

Mol	Chain	Residues	Atoms		ZeroOcc	AltConf
6	A	58	Total 58	O 58	0	0
6	B	183	Total 183	O 183	0	0
6	D	12	Total 12	O 12	0	0



- Molecule 1: SUMO-activating enzyme subunit 1





● Molecule 3: Small ubiquitin-related modifier 1



## 4 Data and refinement statistics

Property	Value	Source
Space group	P 21 21 21	Depositor
Cell constants a, b, c, $\alpha$ , $\beta$ , $\gamma$	59.17Å 133.37Å 159.66Å 90.00° 90.00° 90.00°	Depositor
Resolution (Å)	25.00 – 2.45 44.26 – 2.45	Depositor EDS
% Data completeness (in resolution range)	99.2 (25.00-2.45) 99.2 (44.26-2.45)	Depositor EDS
$R_{merge}$	0.05	Depositor
$R_{sym}$	(Not available)	Depositor
$\langle I/\sigma(I) \rangle$ <sup>1</sup>	2.04 (at 2.45Å)	Xtriage
Refinement program	REFMAC 5.5.0093	Depositor
R, $R_{free}$	0.191 , 0.250 0.193 , 0.253	Depositor DCC
$R_{free}$ test set	2378 reflections (5.06%)	wwPDB-VP
Wilson B-factor (Å <sup>2</sup> )	53.0	Xtriage
Anisotropy	0.397	Xtriage
Bulk solvent $k_{sol}$ (e/Å <sup>3</sup> ), $B_{sol}$ (Å <sup>2</sup> )	0.29 , 49.7	EDS
L-test for twinning <sup>2</sup>	$\langle  L  \rangle = 0.48$ , $\langle L^2 \rangle = 0.31$	Xtriage
Estimated twinning fraction	No twinning to report.	Xtriage
$F_o, F_c$ correlation	0.96	EDS
Total number of atoms	7681	wwPDB-VP
Average B, all atoms (Å <sup>2</sup> )	71.0	wwPDB-VP

Xtriage's analysis on translational NCS is as follows: *The largest off-origin peak in the Patterson function is 3.96% of the height of the origin peak. No significant pseudotranslation is detected.*

<sup>1</sup>Intensities estimated from amplitudes.

<sup>2</sup>Theoretical values of  $\langle |L| \rangle$ ,  $\langle L^2 \rangle$  for acentric reflections are 0.5, 0.333 respectively for untwinned datasets, and 0.375, 0.2 for perfectly twinned datasets.



## 5 Model quality [i](#)

### 5.1 Standard geometry [i](#)

Bond lengths and bond angles in the following residue types are not validated in this section: ZN, JZU

The Z score for a bond length (or angle) is the number of standard deviations the observed value is removed from the expected value. A bond length (or angle) with  $|Z| > 5$  is considered an outlier worth inspection. RMSZ is the root-mean-square of all Z scores of the bond lengths (or angles).

Mol	Chain	Bond lengths		Bond angles	
		RMSZ	$\# Z  > 5$	RMSZ	$\# Z  > 5$
1	A	0.91	0/2488	0.88	2/3357 (0.1%)
2	B	1.03	4/4396 (0.1%)	1.04	17/5936 (0.3%)
3	D	0.85	0/649	0.87	0/866
All	All	0.98	4/7533 (0.1%)	0.98	19/10159 (0.2%)

Chiral center outliers are detected by calculating the chiral volume of a chiral center and verifying if the center is modelled as a planar moiety or with the opposite hand. A planarity outlier is detected by checking planarity of atoms in a peptide group, atoms in a mainchain group or atoms of a sidechain that are expected to be planar.

Mol	Chain	#Chirality outliers	#Planarity outliers
2	B	0	2

All (4) bond length outliers are listed below:

Mol	Chain	Res	Type	Atoms	Z	Observed(Å)	Ideal(Å)
2	B	193	PHE	CE2-CZ	5.33	1.47	1.37
2	B	205	GLU	CG-CD	5.15	1.59	1.51
2	B	607	GLU	CB-CG	-5.13	1.42	1.52
2	B	341	GLU	CD-OE2	5.08	1.31	1.25

The worst 5 of 19 bond angle outliers are listed below:

Mol	Chain	Res	Type	Atoms	Z	Observed(°)	Ideal(°)
2	B	362	ARG	NE-CZ-NH2	-11.96	114.32	120.30
2	B	362	ARG	NE-CZ-NH1	8.23	124.41	120.30
2	B	362	ARG	CG-CD-NE	-8.02	94.96	111.80
1	A	327	ASN	N-CA-C	7.64	131.64	111.00
2	B	7	LEU	CA-CB-CG	7.34	132.19	115.30

There are no chirality outliers.

All (2) planarity outliers are listed below:

Mol	Chain	Res	Type	Group
2	B	485	GLY	Peptide
2	B	93	HIS	Peptide

## 5.2 Too-close contacts

In the following table, the Non-H and H(model) columns list the number of non-hydrogen atoms and hydrogen atoms in the chain respectively. The H(added) column lists the number of hydrogen atoms added and optimized by MolProbity. The Clashes column lists the number of clashes within the asymmetric unit, whereas Symm-Clashes lists symmetry-related clashes.

Mol	Chain	Non-H	H(model)	H(added)	Clashes	Symm-Clashes
1	A	2445	0	2424	74	0
2	B	4320	0	4378	116	1
3	D	639	0	633	33	0
4	B	1	0	0	0	0
5	D	23	0	14	1	0
6	A	58	0	0	6	0
6	B	183	0	0	17	0
6	D	12	0	0	0	0
All	All	7681	0	7449	216	1

The all-atom clashscore is defined as the number of clashes found per 1000 atoms (including hydrogen atoms). The all-atom clashscore for this structure is 15.

The worst 5 of 216 close contacts within the same asymmetric unit are listed below, sorted by their clash magnitude.

Atom-1	Atom-2	Interatomic distance (Å)	Clash overlap (Å)
2:B:512:ARG:HH11	2:B:512:ARG:HG2	1.07	1.15
2:B:11:LEU:HD13	2:B:407:SER:HB3	1.40	1.01
2:B:217:TRP:HZ3	2:B:274:ARG:NH2	1.58	1.01
2:B:512:ARG:HH11	2:B:512:ARG:CG	1.75	1.00
2:B:150:THR:CG2	2:B:405:ILE:HD11	1.92	1.00

All (1) symmetry-related close contacts are listed below. The label for Atom-2 includes the symmetry operator and encoded unit-cell translations to be applied.

Atom-1	Atom-2	Interatomic distance (Å)	Clash overlap (Å)
2:B:19:ARG:NH1	2:B:639:LEU:O[1_455]	2.16	0.04

### 5.3 Torsion angles [i](#)

#### 5.3.1 Protein backbone [i](#)

In the following table, the Percentiles column shows the percent Ramachandran outliers of the chain as a percentile score with respect to all X-ray entries followed by that with respect to entries of similar resolution.

The Analysed column shows the number of residues for which the backbone conformation was analysed, and the total number of residues.

Mol	Chain	Analysed	Favoured	Allowed	Outliers	Percentiles	
1	A	309/346 (89%)	272 (88%)	28 (9%)	9 (3%)	4	2
2	B	540/660 (82%)	502 (93%)	32 (6%)	6 (1%)	14	14
3	D	77/97 (79%)	62 (80%)	7 (9%)	8 (10%)	0	0
All	All	926/1103 (84%)	836 (90%)	67 (7%)	23 (2%)	5	3

5 of 23 Ramachandran outliers are listed below:

Mol	Chain	Res	Type
1	A	253	LYS
1	A	284	PRO
1	A	327	ASN
2	B	9	ARG
2	B	540	LYS

#### 5.3.2 Protein sidechains [i](#)

In the following table, the Percentiles column shows the percent sidechain outliers of the chain as a percentile score with respect to all X-ray entries followed by that with respect to entries of similar resolution.

The Analysed column shows the number of residues for which the sidechain conformation was analysed, and the total number of residues.

Mol	Chain	Analysed	Rotameric	Outliers	Percentiles	
1	A	266/296 (90%)	233 (88%)	33 (12%)	4	4
2	B	475/569 (84%)	432 (91%)	43 (9%)	9	10

*Continued on next page...*

*Continued from previous page...*

Mol	Chain	Analysed	Rotameric	Outliers	Percentiles	
3	D	71/87 (82%)	62 (87%)	9 (13%)	4	3
All	All	812/952 (85%)	727 (90%)	85 (10%)	7	6

5 of 85 residues with a non-rotameric sidechain are listed below:

Mol	Chain	Res	Type
2	B	308	LYS
2	B	609	SER
2	B	336	LYS
2	B	426	LYS
2	B	640	ASP

Sometimes sidechains can be flipped to improve hydrogen bonding and reduce clashes. 5 of 11 such sidechains are listed below:

Mol	Chain	Res	Type
2	B	195	GLN
2	B	204	GLN
3	D	75	HIS
2	B	619	ASN
1	A	244	GLN

### 5.3.3 RNA [i](#)

There are no RNA molecules in this entry.

## 5.4 Non-standard residues in protein, DNA, RNA chains [i](#)

There are no non-standard protein/DNA/RNA residues in this entry.

## 5.5 Carbohydrates [i](#)

There are no monosaccharides in this entry.

## 5.6 Ligand geometry [i](#)

Of 2 ligands modelled in this entry, 1 is monoatomic - leaving 1 for Mogul analysis.

In the following table, the Counts columns list the number of bonds (or angles) for which Mogul statistics could be retrieved, the number of bonds (or angles) that are observed in the model and

the number of bonds (or angles) that are defined in the Chemical Component Dictionary. The Link column lists molecule types, if any, to which the group is linked. The Z score for a bond length (or angle) is the number of standard deviations the observed value is removed from the expected value. A bond length (or angle) with  $|Z| > 2$  is considered an outlier worth inspection. RMSZ is the root-mean-square of all Z scores of the bond lengths (or angles).

Mol	Type	Chain	Res	Link	Bond lengths			Bond angles		
					Counts	RMSZ	$\# Z  > 2$	Counts	RMSZ	$\# Z  > 2$
5	JZU	D	98	3	22,25,25	1.21	4 (18%)	22,38,38	2.13	7 (31%)

In the following table, the Chirals column lists the number of chiral outliers, the number of chiral centers analysed, the number of these observed in the model and the number defined in the Chemical Component Dictionary. Similar counts are reported in the Torsion and Rings columns. '-' means no outliers of that kind were identified.

Mol	Type	Chain	Res	Link	Chirals	Torsions	Rings
5	JZU	D	98	3	-	2/5/26/26	0/3/3/3

All (4) bond length outliers are listed below:

Mol	Chain	Res	Type	Atoms	Z	Observed(Å)	Ideal(Å)
5	D	98	JZU	C2-N3	2.67	1.36	1.32
5	D	98	JZU	C5'-N5'	-2.26	1.43	1.47
5	D	98	JZU	O4'-C1'	2.21	1.44	1.41
5	D	98	JZU	S-N5'	-2.16	1.54	1.62

The worst 5 of 7 bond angle outliers are listed below:

Mol	Chain	Res	Type	Atoms	Z	Observed(°)	Ideal(°)
5	D	98	JZU	C4'-C5'-N5'	-4.83	102.83	112.51
5	D	98	JZU	O3S-S-O2S	-3.74	111.39	119.96
5	D	98	JZU	O2S-S-N5'	3.71	114.17	106.88
5	D	98	JZU	C3'-C2'-C1'	3.37	106.05	100.98
5	D	98	JZU	N3-C2-N1	-3.28	123.55	128.68

There are no chirality outliers.

All (2) torsion outliers are listed below:

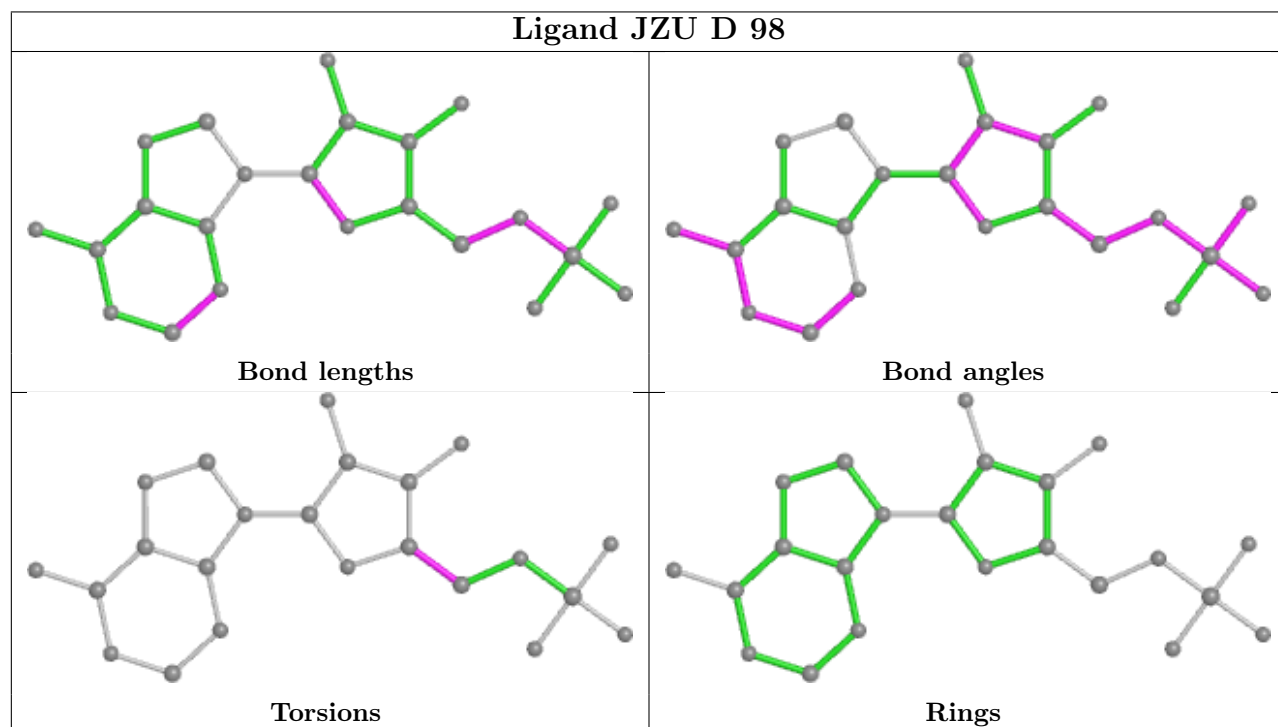
Mol	Chain	Res	Type	Atoms
5	D	98	JZU	O4'-C4'-C5'-N5'
5	D	98	JZU	C3'-C4'-C5'-N5'

There are no ring outliers.

1 monomer is involved in 1 short contact:

Mol	Chain	Res	Type	Clashes	Symm-Clashes
5	D	98	JZU	1	0

The following is a two-dimensional graphical depiction of Mogul quality analysis of bond lengths, bond angles, torsion angles, and ring geometry for all instances of the Ligand of Interest. In addition, ligands with molecular weight > 250 and outliers as shown on the validation Tables will also be included. For torsion angles, if less than 5% of the Mogul distribution of torsion angles is within 10 degrees of the torsion angle in question, then that torsion angle is considered an outlier. Any bond that is central to one or more torsion angles identified as an outlier by Mogul will be highlighted in the graph. For rings, the root-mean-square deviation (RMSD) between the ring in question and similar rings identified by Mogul is calculated over all ring torsion angles. If the average RMSD is greater than 60 degrees and the minimal RMSD between the ring in question and any Mogul-identified rings is also greater than 60 degrees, then that ring is considered an outlier. The outliers are highlighted in purple. The color gray indicates Mogul did not find sufficient equivalents in the CSD to analyse the geometry.



## 5.7 Other polymers [i](#)

There are no such residues in this entry.

## 5.8 Polymer linkage issues [i](#)

There are no chain breaks in this entry.

## 6 Fit of model and data [i](#)

### 6.1 Protein, DNA and RNA chains [i](#)

In the following table, the column labelled ‘#RSRZ> 2’ contains the number (and percentage) of RSRZ outliers, followed by percent RSRZ outliers for the chain as percentile scores relative to all X-ray entries and entries of similar resolution. The OWAB column contains the minimum, median, 95<sup>th</sup> percentile and maximum values of the occupancy-weighted average B-factor per residue. The column labelled ‘Q< 0.9’ lists the number of (and percentage) of residues with an average occupancy less than 0.9.

Mol	Chain	Analysed	<RSRZ>	#RSRZ>2		OWAB(Å <sup>2</sup> )	Q<0.9
1	A	313/346 (90%)	0.34	20 (6%)	19 16	47, 75, 115, 128	0
2	B	548/660 (83%)	0.09	30 (5%)	25 22	33, 63, 117, 147	0
3	D	79/97 (81%)	0.38	5 (6%)	20 16	50, 89, 102, 108	0
All	All	940/1103 (85%)	0.20	55 (5%)	22 19	33, 67, 114, 147	0

The worst 5 of 55 RSRZ outliers are listed below:

Mol	Chain	Res	Type	RSRZ
2	B	627	ILE	7.6
2	B	628	GLU	6.7
2	B	624	ARG	5.5
2	B	629	GLN	5.4
2	B	614	LEU	5.3

### 6.2 Non-standard residues in protein, DNA, RNA chains [i](#)

There are no non-standard protein/DNA/RNA residues in this entry.

### 6.3 Carbohydrates [i](#)

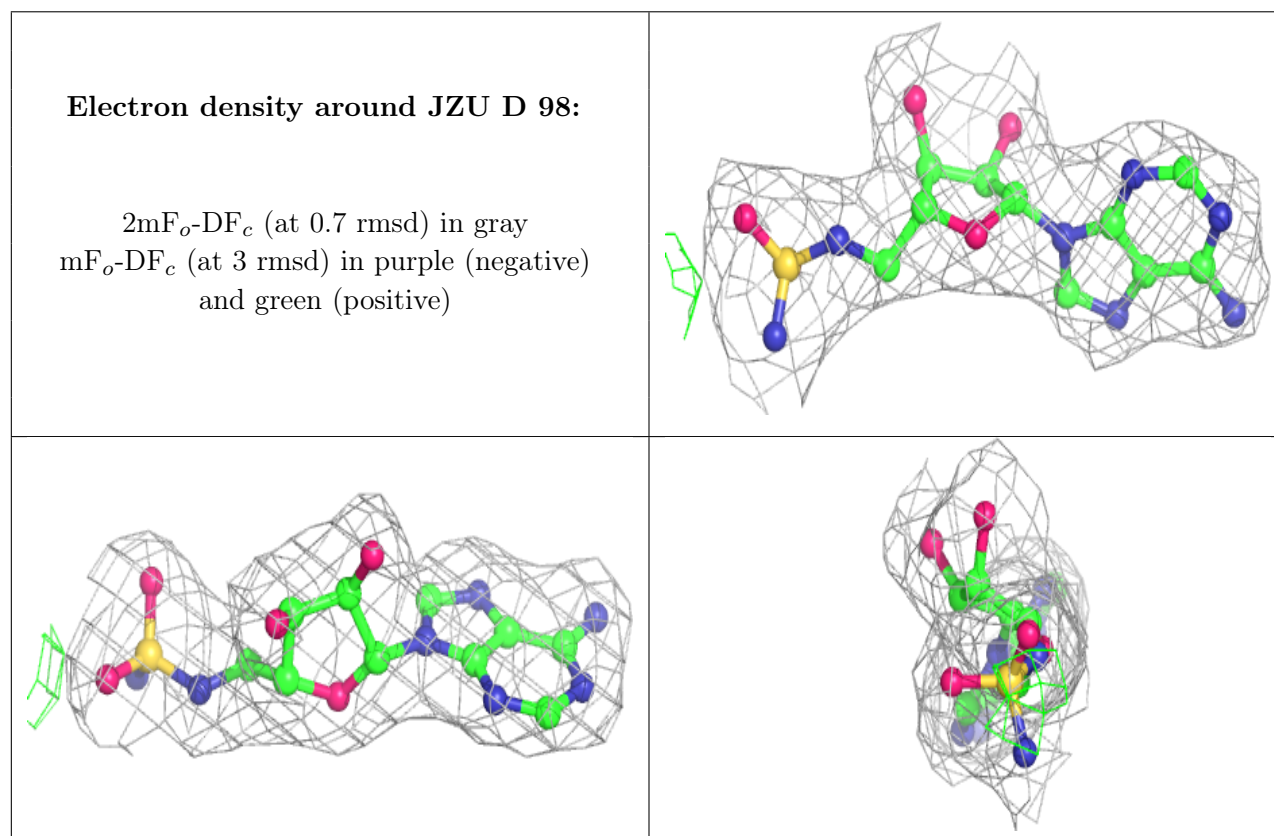
There are no monosaccharides in this entry.

### 6.4 Ligands [i](#)

In the following table, the Atoms column lists the number of modelled atoms in the group and the number defined in the chemical component dictionary. The B-factors column lists the minimum, median, 95<sup>th</sup> percentile and maximum values of B factors of atoms in the group. The column labelled ‘Q< 0.9’ lists the number of atoms with occupancy less than 0.9.

Mol	Type	Chain	Res	Atoms	RSCC	RSR	B-factors( $\text{\AA}^2$ )	Q<0.9
5	JZU	D	98	23/23	0.99	0.14	46,53,60,62	0
4	ZN	B	641	1/1	1.00	0.16	62,62,62,62	0

The following is a graphical depiction of the model fit to experimental electron density of all instances of the Ligand of Interest. In addition, ligands with molecular weight > 250 and outliers as shown on the geometry validation Tables will also be included. Each fit is shown from different orientation to approximate a three-dimensional view.



## 6.5 Other polymers [i](#)

There are no such residues in this entry.