



Full wwPDB X-ray Structure Validation Report ⓘ

May 22, 2020 – 06:34 pm BST

PDB ID : 4L1F
Title : Electron transferring flavoprotein of *Acidaminococcus fermentans*: Towards a mechanism of flavin-based electron bifurcation
Authors : Mowafy, A.M.; Chowdhury, N.P.; Demmer, J.; Upadhyay, V.; Kolzer, S.; Jayamani, E.; Kahnt, J.; Demmer, U.; Ermler, U.; Buckel, W.
Deposited on : 2013-06-03
Resolution : 1.79 Å(reported)

This is a Full wwPDB X-ray Structure Validation Report for a publicly released PDB entry.

We welcome your comments at validation@mail.wwpdb.org

A user guide is available at

<https://www.wwpdb.org/validation/2017/XrayValidationReportHelp>

with specific help available everywhere you see the ⓘ symbol.

The following versions of software and data (see [references ⓘ](#)) were used in the production of this report:

MolProbity : 4.02b-467
Mogul : 1.8.5 (274361), CSD as541be (2020)
Xtriage (Phenix) : 1.13
EDS : 2.11
buster-report : 1.1.7 (2018)
Percentile statistics : 20191225.v01 (using entries in the PDB archive December 25th 2019)
Refmac : 5.8.0158
CCP4 : 7.0.044 (Gargrove)
Ideal geometry (proteins) : Engh & Huber (2001)
Ideal geometry (DNA, RNA) : Parkinson et al. (1996)
Validation Pipeline (wwPDB-VP) : 2.11

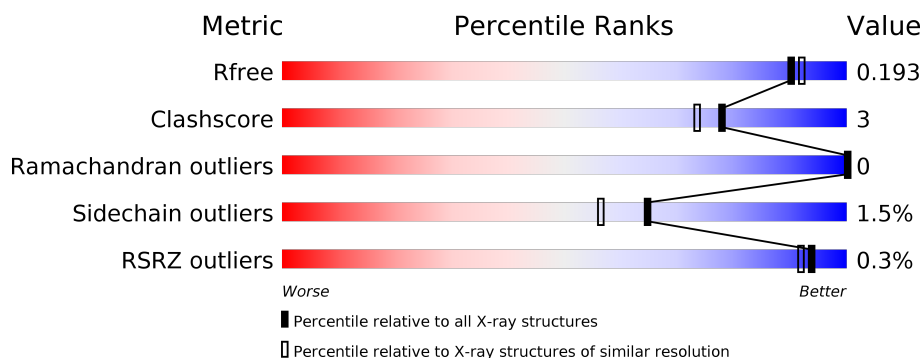
1 Overall quality at a glance

The following experimental techniques were used to determine the structure:

X-RAY DIFFRACTION

The reported resolution of this entry is 1.79 Å.

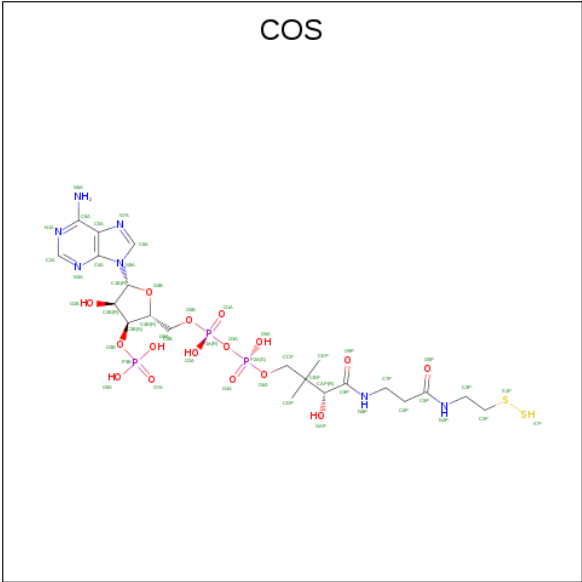
Percentile scores (ranging between 0-100) for global validation metrics of the entry are shown in the following graphic. The table shows the number of entries on which the scores are based.



Metric	Whole archive (#Entries)	Similar resolution (#Entries, resolution range(Å))
R_{free}	130704	5950 (1.80-1.80)
Clashscore	141614	6793 (1.80-1.80)
Ramachandran outliers	138981	6697 (1.80-1.80)
Sidechain outliers	138945	6696 (1.80-1.80)
RSRZ outliers	127900	5850 (1.80-1.80)

The table below summarises the geometric issues observed across the polymeric chains and their fit to the electron density. The red, orange, yellow and green segments on the lower bar indicate the fraction of residues that contain outliers for ≥ 3 , 2, 1 and 0 types of geometric quality criteria respectively. A grey segment represents the fraction of residues that are not modelled. The numeric value for each fraction is indicated below the corresponding segment, with a dot representing fractions $\leq 5\%$. The upper red bar (where present) indicates the fraction of residues that have poor fit to the electron density. The numeric value is given above the bar.

Mol	Chain	Length	Quality of chain
1	A	383	 90% 8% ..
1	B	383	 90% 8% ..

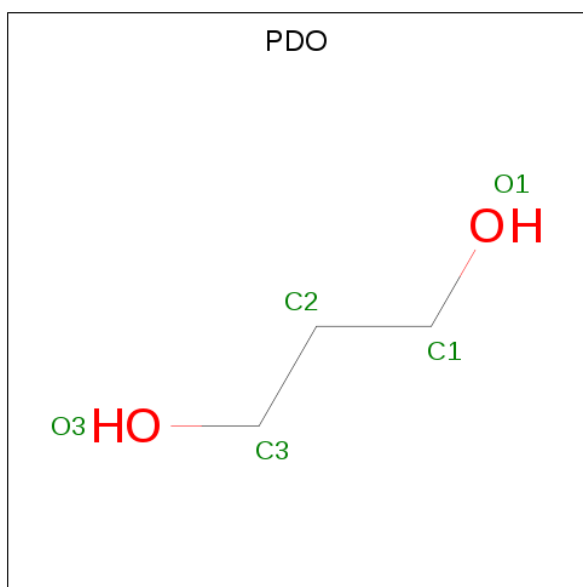


Mol	Chain	Residues	Atoms						ZeroOcc	AltConf
3	A	1	Total	C	N	O	P	S	0	0
			49	21	7	16	3	2		
3	B	1	Total	C	N	O	P	S	0	0
			49	21	7	16	3	2		

- Molecule 4 is SODIUM ION (three-letter code: NA) (formula: Na).

Mol	Chain	Residues	Atoms		ZeroOcc	AltConf
4	B	1	Total	Na	0	0
			1	1		
4	A	2	Total	Na	0	0
			2	2		

- Molecule 5 is 1,3-PROPANDIOL (three-letter code: PDO) (formula: C₃H₈O₂).



Mol	Chain	Residues	Atoms			ZeroOcc	AltConf
5	A	1	Total	C	O	0	0
			5	3	2		

- Molecule 6 is PHOSPHATE ION (three-letter code: PO4) (formula: O_4P).



Mol	Chain	Residues	Atoms			ZeroOcc	AltConf
6	B	1	Total	O	P	0	0
			5	4	1		

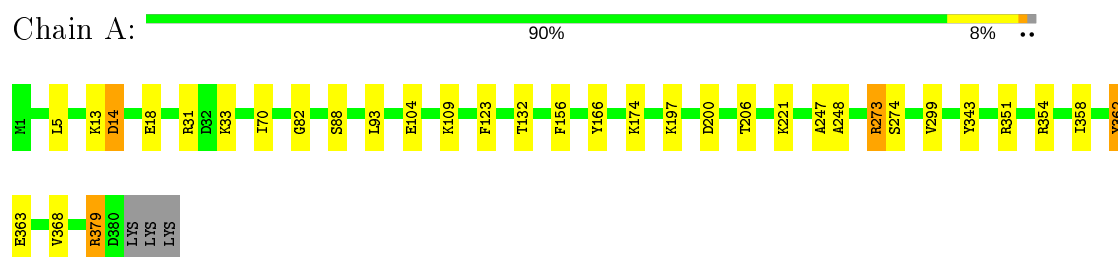
- Molecule 7 is water.

Mol	Chain	Residues	Atoms		ZeroOcc	AltConf
7	A	313	Total 313	O 313	0	0
7	B	303	Total 303	O 303	0	0

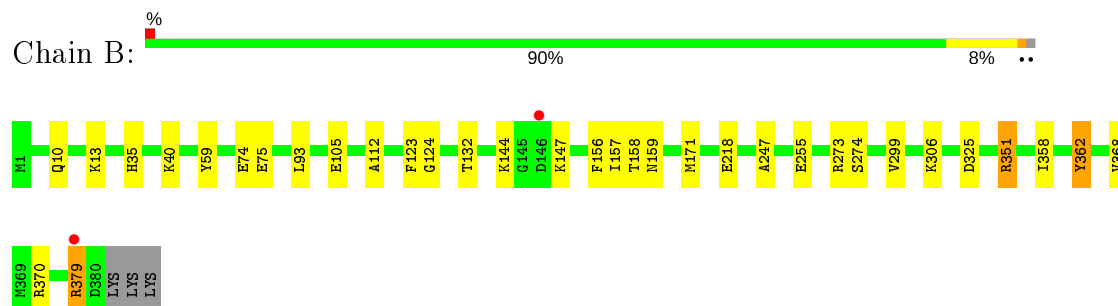
3 Residue-property plots [i](#)

These plots are drawn for all protein, RNA and DNA chains in the entry. The first graphic for a chain summarises the proportions of the various outlier classes displayed in the second graphic. The second graphic shows the sequence view annotated by issues in geometry and electron density. Residues are color-coded according to the number of geometric quality criteria for which they contain at least one outlier: green = 0, yellow = 1, orange = 2 and red = 3 or more. A red dot above a residue indicates a poor fit to the electron density ($RSRZ > 2$). Stretches of 2 or more consecutive residues without any outlier are shown as a green connector. Residues present in the sample, but not in the model, are shown in grey.

- Molecule 1: Acyl-CoA dehydrogenase domain protein



- Molecule 1: Acyl-CoA dehydrogenase domain protein



4 Data and refinement statistics

Property	Value	Source
Space group	P 21 21 2	Depositor
Cell constants a, b, c, α , β , γ	109.10 Å 141.40 Å 64.10 Å 90.00° 90.00° 90.00°	Depositor
Resolution (Å)	47.13 – 1.79 47.13 – 1.79	Depositor EDS
% Data completeness (in resolution range)	99.3 (47.13-1.79) 99.3 (47.13-1.79)	Depositor EDS
R_{merge}	(Not available)	Depositor
R_{sym}	(Not available)	Depositor
$\langle I/\sigma(I) \rangle$ ¹	3.04 (at 1.79 Å)	Xtriage
Refinement program	REFMAC 5.7.0032	Depositor
R, R_{free}	0.153 , 0.183 0.165 , 0.193	Depositor DCC
R_{free} test set	4666 reflections (5.01%)	wwPDB-VP
Wilson B-factor (Å ²)	16.7	Xtriage
Anisotropy	0.106	Xtriage
Bulk solvent k_{sol} (e/Å ³), B_{sol} (Å ²)	0.36 , 44.6	EDS
L-test for twinning ²	$\langle L \rangle = 0.46$, $\langle L^2 \rangle = 0.29$	Xtriage
Estimated twinning fraction	No twinning to report.	Xtriage
F_o, F_c correlation	0.96	EDS
Total number of atoms	6653	wwPDB-VP
Average B, all atoms (Å ²)	18.0	wwPDB-VP

Xtriage's analysis on translational NCS is as follows: *The largest off-origin peak in the Patterson function is 4.23% of the height of the origin peak. No significant pseudotranslation is detected.*

¹Intensities estimated from amplitudes.

²Theoretical values of $\langle |L| \rangle$, $\langle L^2 \rangle$ for acentric reflections are 0.5, 0.333 respectively for untwinned datasets, and 0.375, 0.2 for perfectly twinned datasets.

5 Model quality [i](#)

5.1 Standard geometry [i](#)

Bond lengths and bond angles in the following residue types are not validated in this section: PDO, NA, COS, PO4, FAD

The Z score for a bond length (or angle) is the number of standard deviations the observed value is removed from the expected value. A bond length (or angle) with $|Z| > 5$ is considered an outlier worth inspection. RMSZ is the root-mean-square of all Z scores of the bond lengths (or angles).

Mol	Chain	Bond lengths		Bond angles	
		RMSZ	$\# Z > 5$	RMSZ	$\# Z > 5$
1	A	1.11	4/2959 (0.1%)	1.09	12/3980 (0.3%)
1	B	1.08	3/2959 (0.1%)	1.06	8/3980 (0.2%)
All	All	1.10	7/5918 (0.1%)	1.07	20/7960 (0.3%)

All (7) bond length outliers are listed below:

Mol	Chain	Res	Type	Atoms	Z	Observed(Å)	Ideal(Å)
1	A	166	TYR	CG-CD1	6.75	1.48	1.39
1	A	274	SER	CB-OG	-6.60	1.33	1.42
1	B	274	SER	CB-OG	-6.20	1.34	1.42
1	B	75	GLU	CD-OE1	-6.16	1.18	1.25
1	B	105	GLU	CD-OE1	5.57	1.31	1.25
1	A	104	GLU	CD-OE2	5.11	1.31	1.25
1	A	88	SER	CA-CB	5.02	1.60	1.52

All (20) bond angle outliers are listed below:

Mol	Chain	Res	Type	Atoms	Z	Observed(°)	Ideal(°)
1	A	273	ARG	NE-CZ-NH2	-10.30	115.15	120.30
1	B	325	ASP	CB-CG-OD1	7.29	124.86	118.30
1	B	351	ARG	NE-CZ-NH1	7.15	123.88	120.30
1	A	174	LYS	CD-CE-NZ	6.83	127.41	111.70
1	B	171	MET	CG-SD-CE	-6.80	89.32	100.20
1	B	362	TYR	CB-CG-CD2	-6.62	117.03	121.00
1	A	14	ASP	CB-CG-OD1	6.60	124.24	118.30
1	A	351	ARG	NE-CZ-NH1	6.24	123.42	120.30
1	A	31	ARG	NE-CZ-NH1	6.19	123.39	120.30
1	A	362	TYR	CB-CG-CD1	6.10	124.66	121.00
1	B	370	ARG	NE-CZ-NH1	6.00	123.30	120.30
1	A	362	TYR	CB-CG-CD2	-5.78	117.53	121.00

Continued on next page...

Continued from previous page...

Mol	Chain	Res	Type	Atoms	Z	Observed(°)	Ideal(°)
1	A	109	LYS	CD-CE-NZ	-5.67	98.67	111.70
1	B	362	TYR	CB-CG-CD1	5.40	124.24	121.00
1	A	354	ARG	NE-CZ-NH2	5.38	122.99	120.30
1	A	274	SER	N-CA-CB	5.36	118.54	110.50
1	A	273	ARG	NE-CZ-NH1	5.22	122.91	120.30
1	B	362	TYR	CA-CB-CG	5.12	123.14	113.40
1	B	273	ARG	NE-CZ-NH2	-5.10	117.75	120.30
1	A	33	LYS	CD-CE-NZ	5.06	123.33	111.70

There are no chirality outliers.

There are no planarity outliers.

5.2 Too-close contacts ⓘ

In the following table, the Non-H and H(model) columns list the number of non-hydrogen atoms and hydrogen atoms in the chain respectively. The H(added) column lists the number of hydrogen atoms added and optimized by MolProbity. The Clashes column lists the number of clashes within the asymmetric unit, whereas Symm-Clashes lists symmetry related clashes.

Mol	Chain	Non-H	H(model)	H(added)	Clashes	Symm-Clashes
1	A	2910	0	2879	16	0
1	B	2910	0	2879	19	0
2	A	53	0	31	3	0
2	B	53	0	31	5	0
3	A	49	0	32	1	0
3	B	49	0	32	0	0
4	A	2	0	0	0	0
4	B	1	0	0	0	0
5	A	5	0	8	1	0
6	B	5	0	0	0	0
7	A	313	0	0	3	0
7	B	303	0	0	5	0
All	All	6653	0	5892	34	0

The all-atom clashscore is defined as the number of clashes found per 1000 atoms (including hydrogen atoms). The all-atom clashscore for this structure is 3.

All (34) close contacts within the same asymmetric unit are listed below, sorted by their clash magnitude.

Atom-1	Atom-2	Interatomic distance (Å)	Clash overlap (Å)
1:B:10:GLN:NE2	7:B:621:HOH:O	2.14	0.72
1:B:156:PHE:O	2:B:401:FAD:C4X	2.38	0.70
1:A:358:ILE:HD11	2:A:401:FAD:HM83	1.80	0.63
1:A:358:ILE:CD1	2:A:401:FAD:HM83	2.30	0.62
1:A:197:LYS:HE2	7:A:799:HOH:O	2.00	0.60
1:A:200:ASP:OD1	7:A:561:HOH:O	2.16	0.60
1:B:358:ILE:HD11	2:B:401:FAD:HM83	1.86	0.56
1:B:306:LYS:NZ	7:B:767:HOH:O	2.39	0.56
1:B:13:LYS:HE2	7:B:737:HOH:O	2.09	0.52
1:A:156:PHE:O	2:A:401:FAD:C4X	2.58	0.52
1:B:379:ARG:NE	7:B:729:HOH:O	2.43	0.51
1:A:13:LYS:HE2	7:A:730:HOH:O	2.11	0.50
1:A:5:LEU:O	5:A:404:PDO:H21	2.11	0.50
1:A:247:ALA:HB1	1:A:299:VAL:HG22	1.94	0.49
1:B:156:PHE:HB3	2:B:401:FAD:C9A	2.43	0.49
1:A:343:TYR:CZ	1:B:358:ILE:HB	2.47	0.49
1:B:351:ARG:NH2	7:B:760:HOH:O	2.48	0.47
1:B:358:ILE:CD1	2:B:401:FAD:HM83	2.45	0.46
1:A:70:ILE:HG23	1:A:248:ALA:HB2	1.97	0.46
1:B:156:PHE:HB3	2:B:401:FAD:C9	2.46	0.46
1:B:74:GLU:OE2	1:B:255:GLU:OE1	2.34	0.46
1:A:363:GLU:N	3:A:402:COS:S'P	2.76	0.45
1:B:147:LYS:HD2	1:B:218:GLU:HB3	1.98	0.44
1:B:124:GLY:HA2	1:B:157:ILE:HD12	1.99	0.44
1:B:93:LEU:HB3	1:B:123:PHE:HB2	1.98	0.44
1:A:93:LEU:HB3	1:A:123:PHE:HB2	1.99	0.44
1:A:132:THR:HG23	1:A:368:VAL:CG2	2.48	0.43
1:B:59:TYR:O	1:B:112:ALA:HA	2.19	0.42
1:A:82:GLY:HA3	1:A:206:THR:OG1	2.19	0.42
1:B:247:ALA:HB1	1:B:299:VAL:HG22	2.02	0.42
1:B:132:THR:HG23	1:B:368:VAL:CG2	2.50	0.42
1:A:379:ARG:NH1	1:A:379:ARG:HB3	2.34	0.42
1:A:14:ASP:O	1:A:18:GLU:HG3	2.20	0.41
1:B:158:THR:O	1:B:159:ASN:HB2	2.20	0.41

There are no symmetry-related clashes.

5.3 Torsion angles

5.3.1 Protein backbone

In the following table, the Percentiles column shows the percent Ramachandran outliers of the chain as a percentile score with respect to all X-ray entries followed by that with respect to entries of similar resolution.

The Analysed column shows the number of residues for which the backbone conformation was analysed, and the total number of residues.

Mol	Chain	Analysed	Favoured	Allowed	Outliers	Percentiles	
1	A	379/383 (99%)	371 (98%)	8 (2%)	0	100	100
1	B	379/383 (99%)	368 (97%)	11 (3%)	0	100	100
All	All	758/766 (99%)	739 (98%)	19 (2%)	0	100	100

There are no Ramachandran outliers to report.

5.3.2 Protein sidechains

In the following table, the Percentiles column shows the percent sidechain outliers of the chain as a percentile score with respect to all X-ray entries followed by that with respect to entries of similar resolution.

The Analysed column shows the number of residues for which the sidechain conformation was analysed, and the total number of residues.

Mol	Chain	Analysed	Rotameric	Outliers	Percentiles	
1	A	298/300 (99%)	294 (99%)	4 (1%)	69	62
1	B	298/300 (99%)	293 (98%)	5 (2%)	60	51
All	All	596/600 (99%)	587 (98%)	9 (2%)	65	56

All (9) residues with a non-rotameric sidechain are listed below:

Mol	Chain	Res	Type
1	A	221	LYS
1	A	273	ARG
1	A	362	TYR
1	A	379	ARG
1	B	35	HIS
1	B	40	LYS
1	B	144	LYS
1	B	362	TYR

Continued on next page...

Continued from previous page...

Mol	Chain	Res	Type
1	B	379	ARG

Some sidechains can be flipped to improve hydrogen bonding and reduce clashes. All (4) such sidechains are listed below:

Mol	Chain	Res	Type
1	A	179	HIS
1	A	205	HIS
1	B	179	HIS
1	B	205	HIS

5.3.3 RNA ⓘ

There are no RNA molecules in this entry.

5.4 Non-standard residues in protein, DNA, RNA chains ⓘ

There are no non-standard protein/DNA/RNA residues in this entry.

5.5 Carbohydrates ⓘ

There are no carbohydrates in this entry.

5.6 Ligand geometry ⓘ

Of 9 ligands modelled in this entry, 3 are monoatomic - leaving 6 for Mogul analysis.

In the following table, the Counts columns list the number of bonds (or angles) for which Mogul statistics could be retrieved, the number of bonds (or angles) that are observed in the model and the number of bonds (or angles) that are defined in the Chemical Component Dictionary. The Link column lists molecule types, if any, to which the group is linked. The Z score for a bond length (or angle) is the number of standard deviations the observed value is removed from the expected value. A bond length (or angle) with $|Z| > 2$ is considered an outlier worth inspection. RMSZ is the root-mean-square of all Z scores of the bond lengths (or angles).

Mol	Type	Chain	Res	Link	Bond lengths			Bond angles		
					Counts	RMSZ	# $ Z > 2$	Counts	RMSZ	# $ Z > 2$
2	FAD	B	401	-	51,58,58	2.05	8 (15%)	60,89,89	2.44	16 (26%)
2	FAD	A	401	-	51,58,58	1.88	7 (13%)	60,89,89	2.76	28 (46%)
6	PO4	B	403	-	4,4,4	0.89	0	6,6,6	0.41	0

Mol	Type	Chain	Res	Link	Bond lengths			Bond angles		
					Counts	RMSZ	# Z > 2	Counts	RMSZ	# Z > 2
5	PDO	A	404	-	4,4,4	0.51	0	3,3,3	0.28	0
3	COS	A	402	-	42,51,51	0.98	3 (7%)	54,76,76	1.93	16 (29%)
3	COS	B	402	-	42,51,51	1.30	7 (16%)	54,76,76	1.69	12 (22%)

In the following table, the Chirals column lists the number of chiral outliers, the number of chiral centers analysed, the number of these observed in the model and the number defined in the Chemical Component Dictionary. Similar counts are reported in the Torsion and Rings columns. '-' means no outliers of that kind were identified.

Mol	Type	Chain	Res	Link	Chirals	Torsions	Rings
2	FAD	B	401	-	-	1/30/50/50	0/6/6/6
2	FAD	A	401	-	-	2/30/50/50	0/6/6/6
5	PDO	A	404	-	-	0/2/2/2	-
3	COS	A	402	-	-	2/44/65/65	0/3/3/3
3	COS	B	402	-	-	4/44/65/65	0/3/3/3

All (25) bond length outliers are listed below:

Mol	Chain	Res	Type	Atoms	Z	Observed(Å)	Ideal(Å)
2	B	401	FAD	C4X-C10	10.01	1.48	1.38
2	A	401	FAD	C4X-C10	7.89	1.46	1.38
2	A	401	FAD	C6-C5X	-5.76	1.32	1.41
2	B	401	FAD	C4-C4X	4.11	1.48	1.41
2	A	401	FAD	C5'-C4'	3.85	1.57	1.51
3	B	402	COS	O4B-C1B	3.42	1.45	1.41
2	A	401	FAD	C4-C4X	3.17	1.46	1.41
2	B	401	FAD	O4B-C1B	3.16	1.45	1.41
2	A	401	FAD	C4X-N5	3.14	1.37	1.33
2	B	401	FAD	C6-C5X	-2.96	1.37	1.41
2	A	401	FAD	O4B-C1B	2.95	1.45	1.41
2	B	401	FAD	C2-N3	-2.91	1.32	1.38
2	B	401	FAD	C9A-C5X	2.88	1.48	1.42
3	B	402	COS	C5A-C4A	2.85	1.48	1.40
3	B	402	COS	C8A-N7A	2.62	1.39	1.34
2	A	401	FAD	C2-N1	-2.62	1.33	1.38
2	B	401	FAD	C4X-N5	2.53	1.37	1.33
3	B	402	COS	P3B-O3B	2.39	1.63	1.59
3	A	402	COS	C5A-C4A	2.39	1.47	1.40
3	B	402	COS	C2A-N3A	2.28	1.35	1.32
3	A	402	COS	C2A-N3A	2.21	1.35	1.32
3	B	402	COS	C2A-N1A	2.11	1.37	1.33

Continued on next page...

Continued from previous page...

Mol	Chain	Res	Type	Atoms	Z	Observed(Å)	Ideal(Å)
3	A	402	COS	P3B-O3B	2.06	1.63	1.59
3	B	402	COS	C4A-N3A	2.04	1.38	1.35
2	B	401	FAD	C9A-N10	2.01	1.41	1.38

All (72) bond angle outliers are listed below:

Mol	Chain	Res	Type	Atoms	Z	Observed(°)	Ideal(°)
2	A	401	FAD	C4-N3-C2	9.88	123.49	115.14
2	B	401	FAD	C4-N3-C2	9.78	123.40	115.14
2	A	401	FAD	C5X-C9A-N10	8.08	123.57	117.72
2	B	401	FAD	C5X-C9A-N10	6.68	122.56	117.72
2	A	401	FAD	C4-C4X-C10	-6.18	115.86	119.95
2	B	401	FAD	C4-C4X-C10	-5.82	116.10	119.95
2	B	401	FAD	C1'-N10-C10	4.85	122.75	118.41
2	A	401	FAD	C4X-C10-N10	-4.61	115.57	120.30
3	B	402	COS	CEP-CBP-CCP	-4.52	100.85	108.23
3	A	402	COS	CEP-CBP-CCP	-4.35	101.14	108.23
2	A	401	FAD	C4X-C4-N3	-4.24	117.63	123.43
3	A	402	COS	N3A-C2A-N1A	-4.19	122.13	128.68
2	B	401	FAD	C4X-C4-N3	-4.15	117.76	123.43
3	B	402	COS	CEP-CBP-CAP	4.03	115.81	108.82
2	A	401	FAD	C1'-N10-C9A	4.00	121.44	118.29
2	A	401	FAD	O4'-C4'-C5'	-3.99	100.96	109.92
2	B	401	FAD	C9A-N10-C10	-3.93	116.76	121.91
2	A	401	FAD	C6-C5X-C9A	3.92	124.20	119.05
2	A	401	FAD	C10-C4X-N5	3.90	123.95	121.26
3	A	402	COS	CEP-CBP-CAP	3.89	115.56	108.82
2	B	401	FAD	C2A-N1A-C6A	3.71	125.11	118.75
3	B	402	COS	N3A-C2A-N1A	-3.68	122.93	128.68
2	B	401	FAD	N3A-C2A-N1A	-3.66	122.96	128.68
3	A	402	COS	C1B-N9A-C4A	-3.64	120.25	126.64
3	A	402	COS	O5P-C5P-C6P	-3.36	115.88	122.02
2	A	401	FAD	P-O3P-PA	-3.34	121.35	132.83
3	B	402	COS	C1B-N9A-C4A	-3.31	120.82	126.64
2	A	401	FAD	C9A-C5X-N5	-3.28	117.24	122.36
3	A	402	COS	O3B-P3B-O7A	-3.25	96.84	109.39
2	A	401	FAD	O4B-C1B-C2B	-3.23	102.21	106.93
3	A	402	COS	CDP-CBP-CCP	-3.17	103.05	108.23
3	A	402	COS	CEP-CBP-CDP	3.13	115.56	109.17
3	A	402	COS	C6P-C7P-N8P	-3.11	105.61	111.90
2	A	401	FAD	C9-C9A-C5X	-3.10	114.58	119.88
2	A	401	FAD	O2'-C2'-C1'	3.05	116.93	109.59

Continued on next page...

Continued from previous page...

Mol	Chain	Res	Type	Atoms	Z	Observed(°)	Ideal(°)
2	B	401	FAD	N6A-C6A-N1A	3.04	124.89	118.57
3	A	402	COS	C2A-N1A-C6A	2.98	123.86	118.75
2	B	401	FAD	C10-C4X-N5	2.84	123.22	121.26
3	A	402	COS	O9A-P3B-O7A	2.83	121.74	110.68
2	A	401	FAD	C9A-N10-C10	-2.78	118.27	121.91
2	A	401	FAD	O3'-C3'-C2'	-2.77	102.13	108.81
3	B	402	COS	C3P-N4P-C5P	-2.77	117.70	122.84
2	B	401	FAD	C4X-C10-N10	-2.74	117.49	120.30
2	A	401	FAD	N3A-C2A-N1A	-2.70	124.46	128.68
3	B	402	COS	C6P-C7P-N8P	-2.69	106.46	111.90
3	B	402	COS	P2A-O3A-P1A	-2.63	123.79	132.83
2	B	401	FAD	O2'-C2'-C1'	2.61	115.88	109.59
3	A	402	COS	O2A-P1A-O1A	2.59	125.06	112.24
3	B	402	COS	N6A-C6A-N1A	2.58	123.92	118.57
2	A	401	FAD	O2P-P-O1P	2.57	124.94	112.24
3	B	402	COS	CDP-CBP-CAP	2.54	113.23	108.82
2	A	401	FAD	O3B-C3B-C2B	-2.51	103.71	111.82
3	A	402	COS	P2A-O3A-P1A	-2.48	124.33	132.83
2	A	401	FAD	C4X-N5-C5X	2.44	119.21	116.77
2	B	401	FAD	C9A-C5X-N5	-2.44	118.55	122.36
2	A	401	FAD	O5'-C5'-C4'	2.43	115.84	109.36
3	B	402	COS	O3B-P3B-O7A	-2.42	100.05	109.39
2	B	401	FAD	C5A-C6A-N1A	-2.42	114.87	120.35
2	B	401	FAD	O3'-C3'-C2'	-2.42	102.97	108.81
3	A	402	COS	O3B-C3B-C4B	-2.40	101.39	110.08
2	A	401	FAD	O2A-PA-O1A	2.39	124.07	112.24
3	B	402	COS	C2A-N1A-C6A	2.39	122.85	118.75
3	A	402	COS	N6A-C6A-N1A	2.33	123.41	118.57
2	B	401	FAD	C4X-N5-C5X	2.33	119.09	116.77
2	A	401	FAD	O4B-C4B-C3B	2.31	109.69	105.11
2	A	401	FAD	C5A-C6A-N1A	-2.30	115.13	120.35
2	A	401	FAD	N6A-C6A-N1A	2.25	123.25	118.57
3	B	402	COS	O9A-P3B-O8A	2.18	115.97	107.64
2	A	401	FAD	C5'-C4'-C3'	-2.18	108.00	112.20
2	A	401	FAD	C2A-N1A-C6A	2.10	122.34	118.75
2	A	401	FAD	C4A-C5A-N7A	-2.04	107.27	109.40
3	A	402	COS	O9P-C9P-CAP	-2.02	114.90	121.06

There are no chirality outliers.

All (9) torsion outliers are listed below:

Mol	Chain	Res	Type	Atoms
2	B	401	FAD	C2'-C1'-N10-C10
2	A	401	FAD	C2'-C1'-N10-C10
3	A	402	COS	C3B-O3B-P3B-O8A
3	A	402	COS	P1A-O3A-P2A-O4A
3	B	402	COS	P1A-O3A-P2A-O5A
3	B	402	COS	C5P-C6P-C7P-N8P
2	A	401	FAD	O2'-C2'-C3'-O3'
3	B	402	COS	C3B-O3B-P3B-O8A
3	B	402	COS	P1A-O3A-P2A-O4A

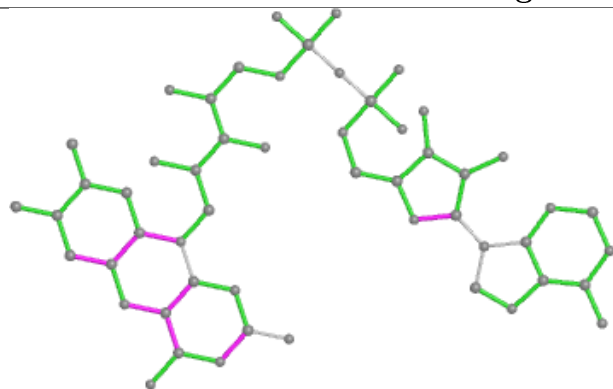
There are no ring outliers.

4 monomers are involved in 10 short contacts:

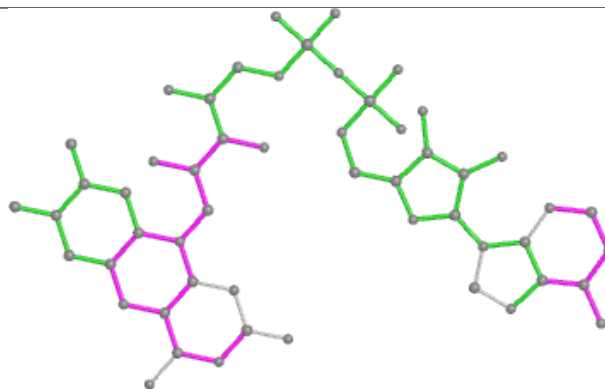
Mol	Chain	Res	Type	Clashes	Symm-Clashes
2	B	401	FAD	5	0
2	A	401	FAD	3	0
5	A	404	PDO	1	0
3	A	402	COS	1	0

The following is a two-dimensional graphical depiction of Mogul quality analysis of bond lengths, bond angles, torsion angles, and ring geometry for all instances of the Ligand of Interest. In addition, ligands with molecular weight > 250 and outliers as shown on the validation Tables will also be included. For torsion angles, if less than 5% of the Mogul distribution of torsion angles is within 10 degrees of the torsion angle in question, then that torsion angle is considered an outlier. Any bond that is central to one or more torsion angles identified as an outlier by Mogul will be highlighted in the graph. For rings, the root-mean-square deviation (RMSD) between the ring in question and similar rings identified by Mogul is calculated over all ring torsion angles. If the average RMSD is greater than 60 degrees and the minimal RMSD between the ring in question and any Mogul-identified rings is also greater than 60 degrees, then that ring is considered an outlier. The outliers are highlighted in purple. The color gray indicates Mogul did not find sufficient equivalents in the CSD to analyse the geometry.

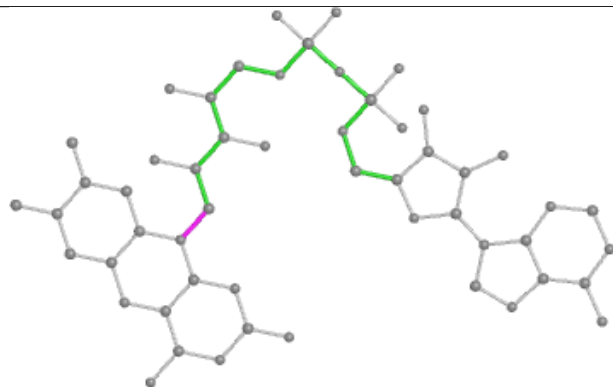
Ligand FAD B 401



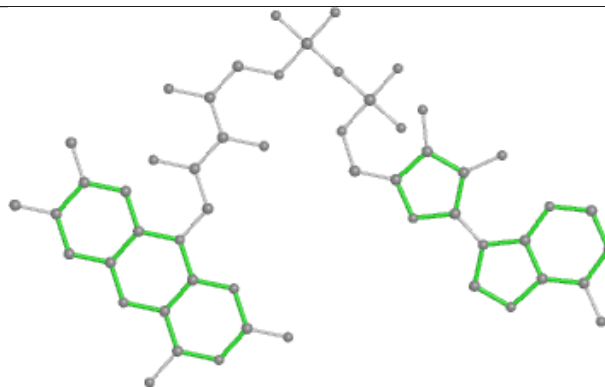
Bond lengths



Bond angles

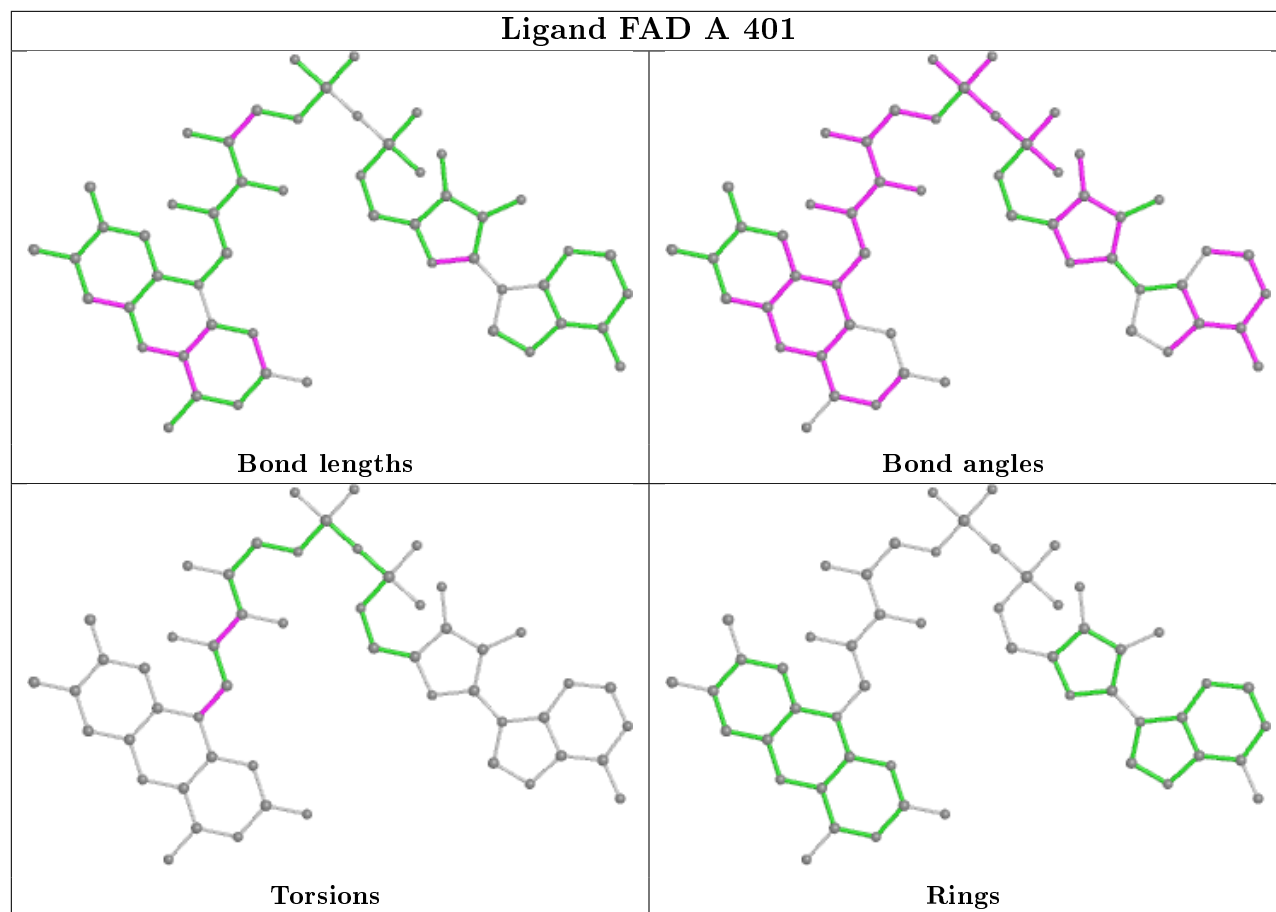


Torsions

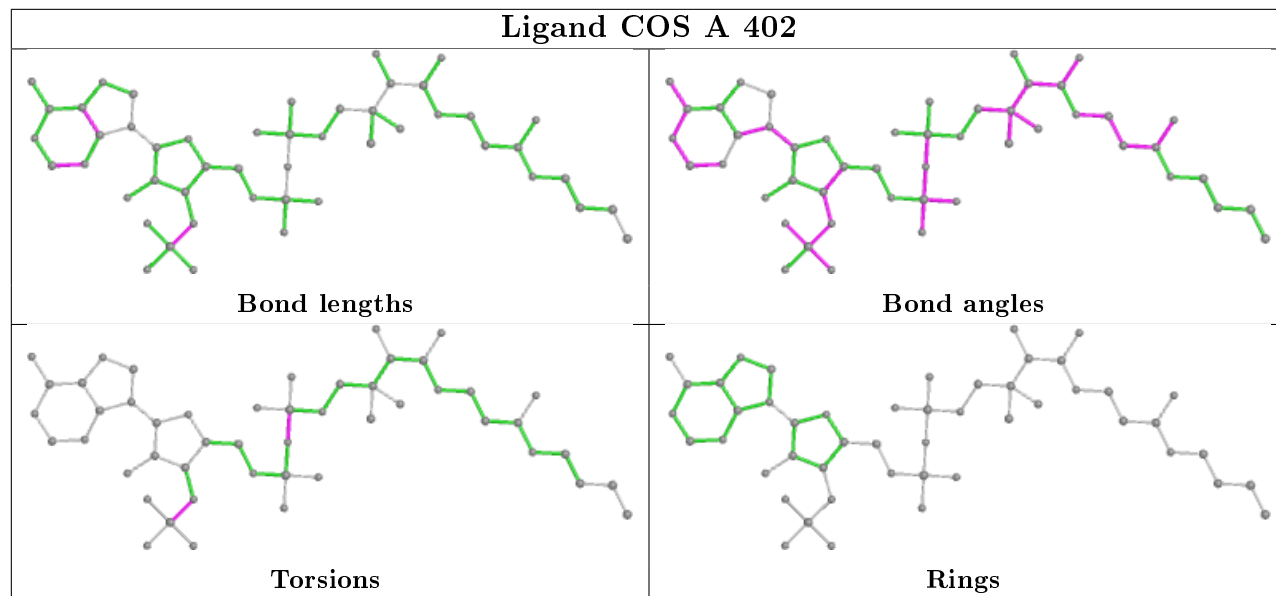


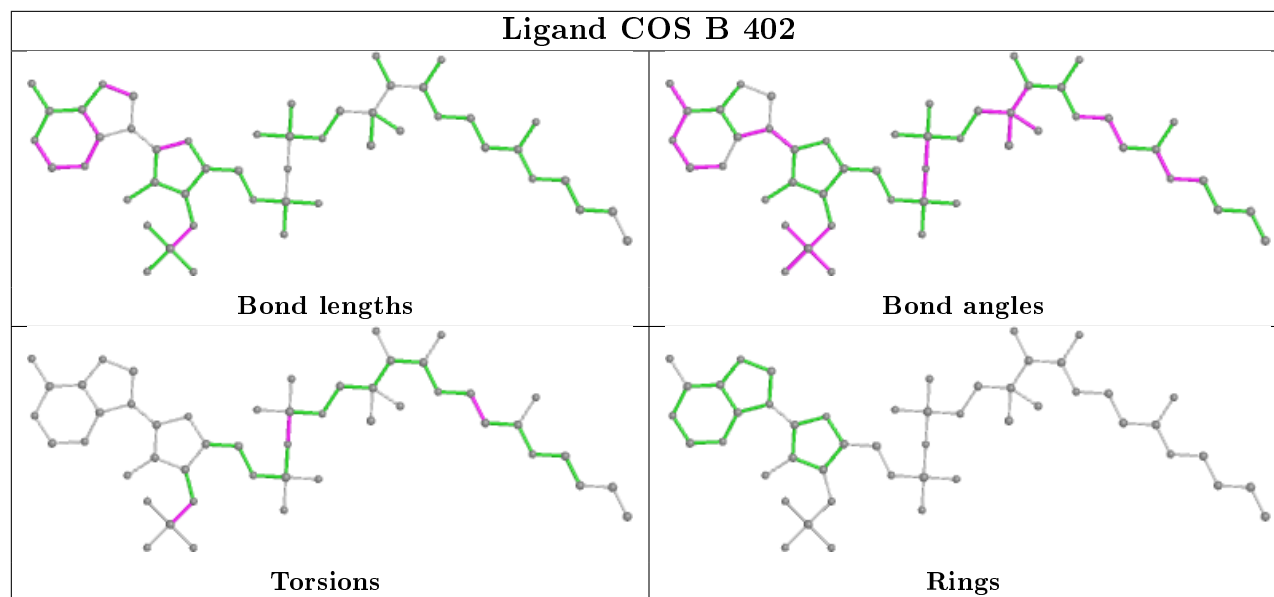
Rings

Ligand FAD A 401



Ligand COS A 402





5.7 Other polymers [i](#)

There are no such residues in this entry.

5.8 Polymer linkage issues [i](#)

There are no chain breaks in this entry.

6 Fit of model and data [i](#)

6.1 Protein, DNA and RNA chains [i](#)

In the following table, the column labelled ‘#RSRZ> 2’ contains the number (and percentage) of RSRZ outliers, followed by percent RSRZ outliers for the chain as percentile scores relative to all X-ray entries and entries of similar resolution. The OWAB column contains the minimum, median, 95th percentile and maximum values of the occupancy-weighted average B-factor per residue. The column labelled ‘Q< 0.9’ lists the number of (and percentage) of residues with an average occupancy less than 0.9.

Mol	Chain	Analysed	<RSRZ>	#RSRZ>2	OWAB(Å ²)	Q<0.9
1	A	380/383 (99%)	-0.24	0 100 100	7, 15, 29, 50	0
1	B	380/383 (99%)	-0.17	2 (0%) 91 89	8, 16, 32, 52	0
All	All	760/766 (99%)	-0.20	2 (0%) 94 92	7, 15, 30, 52	0

All (2) RSRZ outliers are listed below:

Mol	Chain	Res	Type	RSRZ
1	B	379	ARG	3.2
1	B	146	ASP	2.7

6.2 Non-standard residues in protein, DNA, RNA chains [i](#)

There are no non-standard protein/DNA/RNA residues in this entry.

6.3 Carbohydrates [i](#)

There are no carbohydrates in this entry.

6.4 Ligands [i](#)

In the following table, the Atoms column lists the number of modelled atoms in the group and the number defined in the chemical component dictionary. The B-factors column lists the minimum, median, 95th percentile and maximum values of B factors of atoms in the group. The column labelled ‘Q< 0.9’ lists the number of atoms with occupancy less than 0.9.

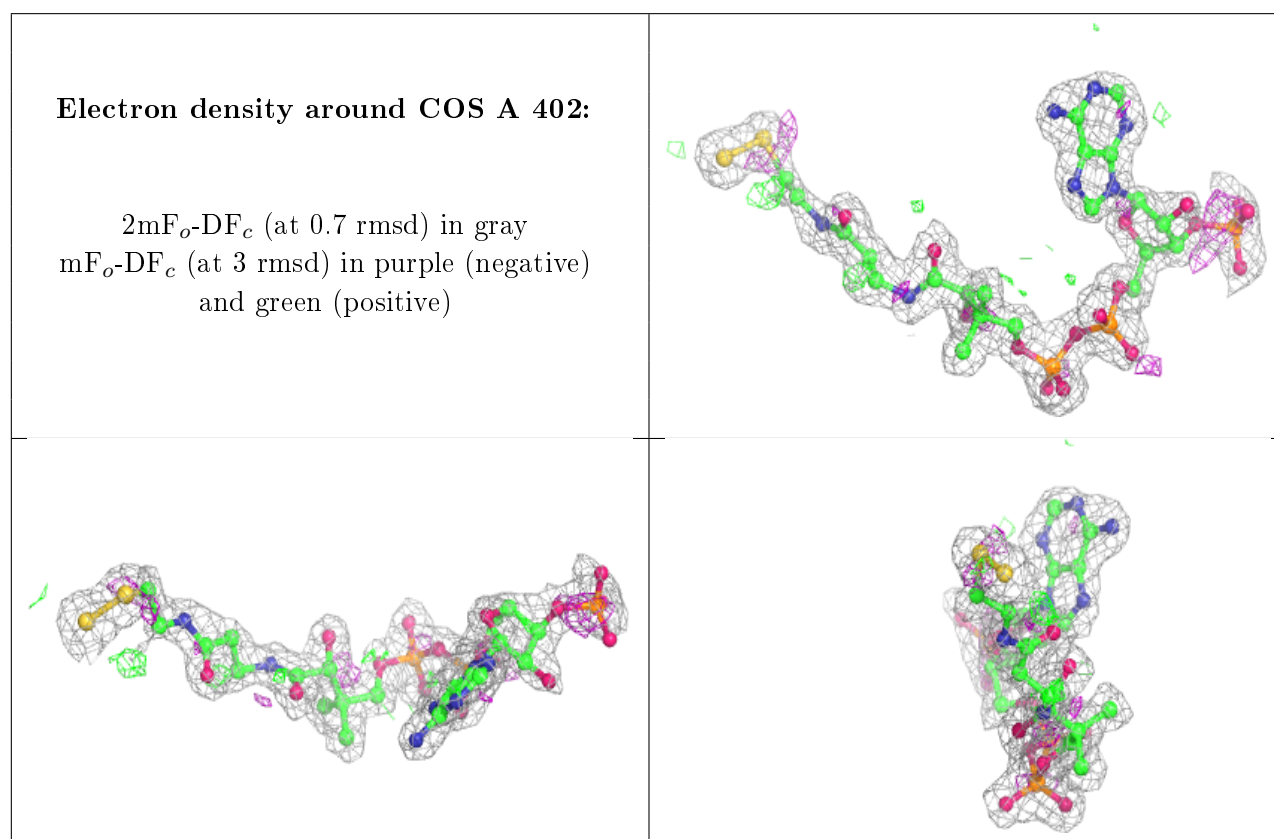
Mol	Type	Chain	Res	Atoms	RSCC	RSR	B-factors(Å ²)	Q<0.9
5	PDO	A	404	5/5	0.69	0.35	44,47,48,49	0
3	COS	A	402	49/49	0.90	0.20	21,30,47,59	0
3	COS	B	402	49/49	0.91	0.20	20,31,50,52	0

Continued on next page...

Continued from previous page...

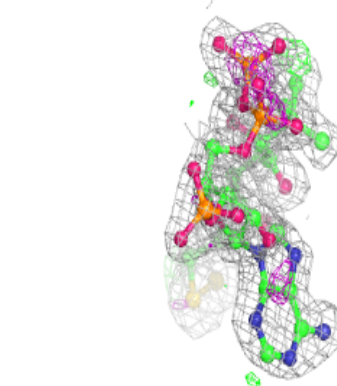
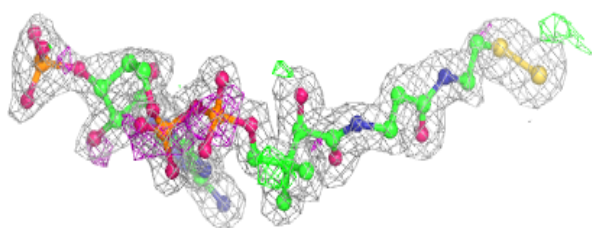
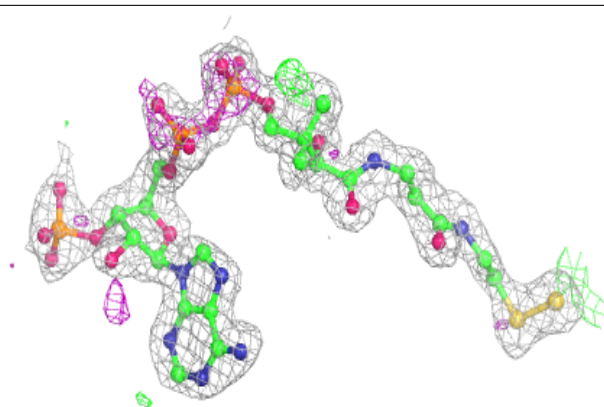
Mol	Type	Chain	Res	Atoms	RSCC	RSR	B-factors(\AA^2)	Q<0.9
6	PO4	B	403	5/5	0.92	0.13	52,60,65,70	0
4	NA	B	404	1/1	0.92	0.09	42,42,42,42	0
4	NA	A	403	1/1	0.96	0.09	31,31,31,31	0
2	FAD	B	401	53/53	0.97	0.07	9,12,18,21	0
2	FAD	A	401	53/53	0.97	0.07	9,13,18,20	0
4	NA	A	405	1/1	0.98	0.10	31,31,31,31	0

The following is a graphical depiction of the model fit to experimental electron density of all instances of the Ligand of Interest. In addition, ligands with molecular weight > 250 and outliers as shown on the geometry validation Tables will also be included. Each fit is shown from different orientation to approximate a three-dimensional view.

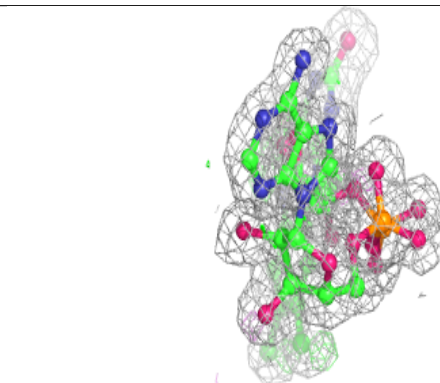
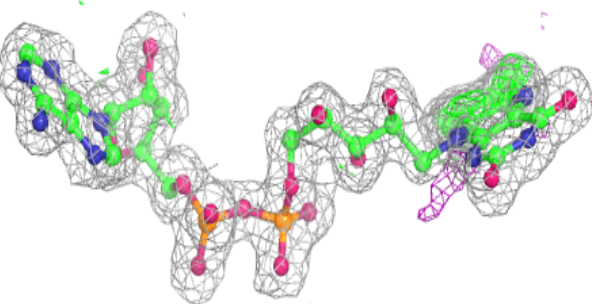
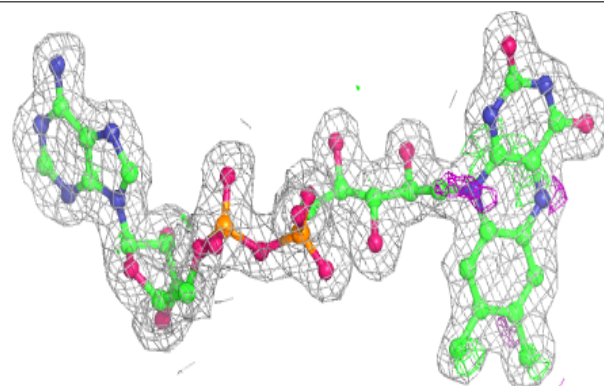


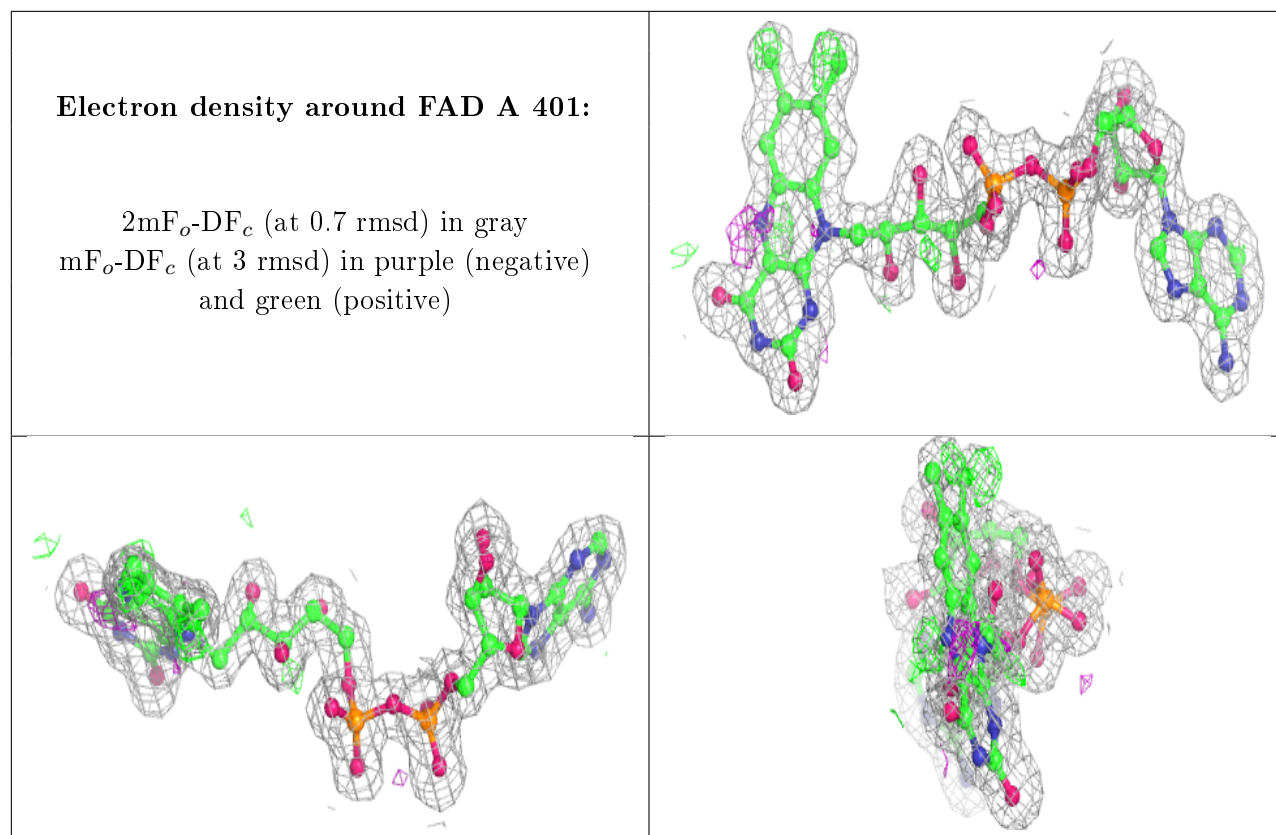
Electron density around COS B 402:

$2mF_o-DF_c$ (at 0.7 rmsd) in gray
 mF_o-DF_c (at 3 rmsd) in purple (negative)
and green (positive)

**Electron density around FAD B 401:**

$2mF_o-DF_c$ (at 0.7 rmsd) in gray
 mF_o-DF_c (at 3 rmsd) in purple (negative)
and green (positive)





6.5 Other polymers [i](#)

There are no such residues in this entry.