



# Full wwPDB X-ray Structure Validation Report ⓘ

Sep 21, 2020 – 06:13 PM JST

PDB ID : 6L1A  
Title : Crystal Structure of P450BM3 with N-enanthoyl-L-prolyl-L-phenylalanine  
Authors : Shoji, O.; Yonemura, K.  
Deposited on : 2019-09-28  
Resolution : 1.84 Å(reported)

This is a Full wwPDB X-ray Structure Validation Report for a publicly released PDB entry.

We welcome your comments at [validation@mail.wwpdb.org](mailto:validation@mail.wwpdb.org)

A user guide is available at

<https://www.wwpdb.org/validation/2017/XrayValidationReportHelp>

with specific help available everywhere you see the ⓘ symbol.

---

The following versions of software and data (see [references ⓘ](#)) were used in the production of this report:

MolProbity : 4.02b-467  
Mogul : 1.8.5 (274361), CSD as541be (2020)  
Xtriage (Phenix) : 1.13  
EDS : 2.14.6  
buster-report : 1.1.7 (2018)  
Percentile statistics : 20191225.v01 (using entries in the PDB archive December 25th 2019)  
Refmac : 5.8.0158  
CCP4 : 7.0.044 (Gargrove)  
Ideal geometry (proteins) : Engh & Huber (2001)  
Ideal geometry (DNA, RNA) : Parkinson et al. (1996)  
Validation Pipeline (wwPDB-VP) : 2.14.6

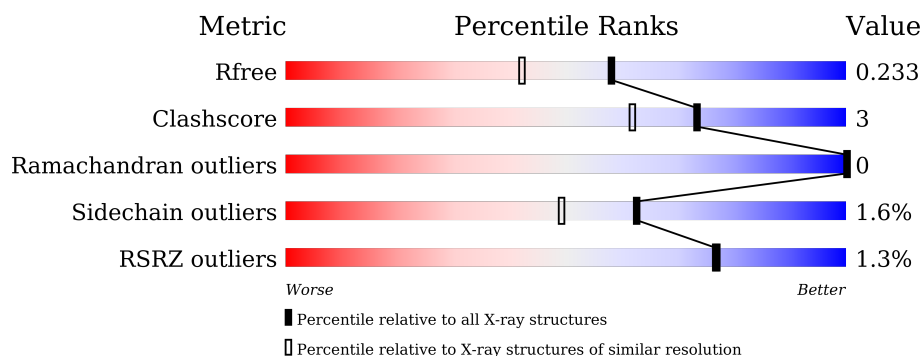
# 1 Overall quality at a glance

The following experimental techniques were used to determine the structure:

*X-RAY DIFFRACTION*

The reported resolution of this entry is 1.84 Å.

Percentile scores (ranging between 0-100) for global validation metrics of the entry are shown in the following graphic. The table shows the number of entries on which the scores are based.



Metric	Whole archive (#Entries)	Similar resolution (#Entries, resolution range(Å))
$R_{free}$	130704	4003 (1.86-1.82)
Clashscore	141614	4233 (1.86-1.82)
Ramachandran outliers	138981	4185 (1.86-1.82)
Sidechain outliers	138945	4186 (1.86-1.82)
RSRZ outliers	127900	3957 (1.86-1.82)

The table below summarises the geometric issues observed across the polymeric chains and their fit to the electron density. The red, orange, yellow and green segments on the lower bar indicate the fraction of residues that contain outliers for  $\geq 3$ , 2, 1 and 0 types of geometric quality criteria respectively. A grey segment represents the fraction of residues that are not modelled. The numeric value for each fraction is indicated below the corresponding segment, with a dot representing fractions  $\leq 5\%$ . The upper red bar (where present) indicates the fraction of residues that have poor fit to the electron density. The numeric value is given above the bar.

Mol	Chain	Length	Quality of chain
1	A	456	 93% 6%
1	B	456	 90% 9%

## 2 Entry composition [i](#)

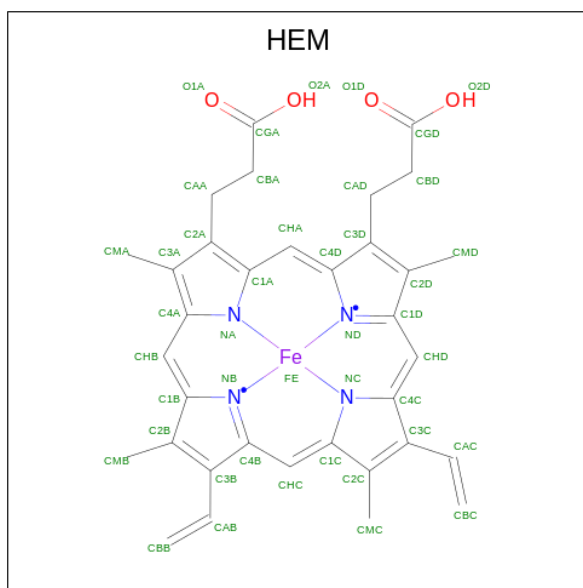
There are 6 unique types of molecules in this entry. The entry contains 8271 atoms, of which 0 are hydrogens and 0 are deuteriums.

In the tables below, the ZeroOcc column contains the number of atoms modelled with zero occupancy, the AltConf column contains the number of residues with at least one atom in alternate conformation and the Trace column contains the number of residues modelled with at most 2 atoms.

- Molecule 1 is a protein called Bifunctional cytochrome P450/NADPH-P450 reductase.

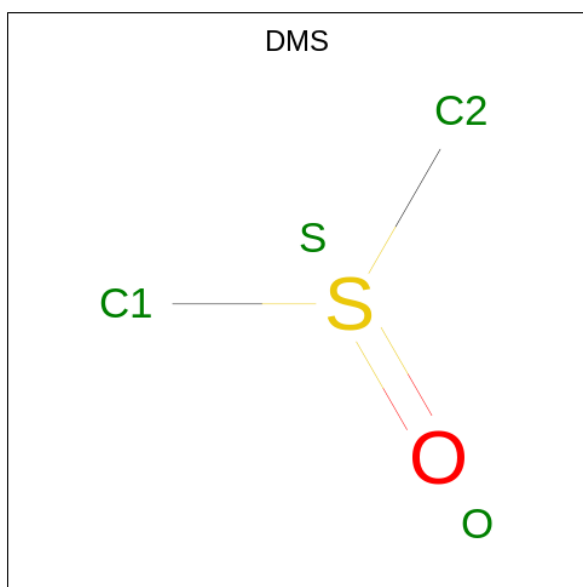
Mol	Chain	Residues	Atoms					ZeroOcc	AltConf	Trace
1	A	454	Total	C	N	O	S	0	12	0
			3758	2399	636	705	18			
1	B	454	Total	C	N	O	S	0	22	0
			3841	2452	652	719	18			

- Molecule 2 is PROTOPORPHYRIN IX CONTAINING FE (three-letter code: HEM) (formula:  $C_{34}H_{32}FeN_4O_4$ ).



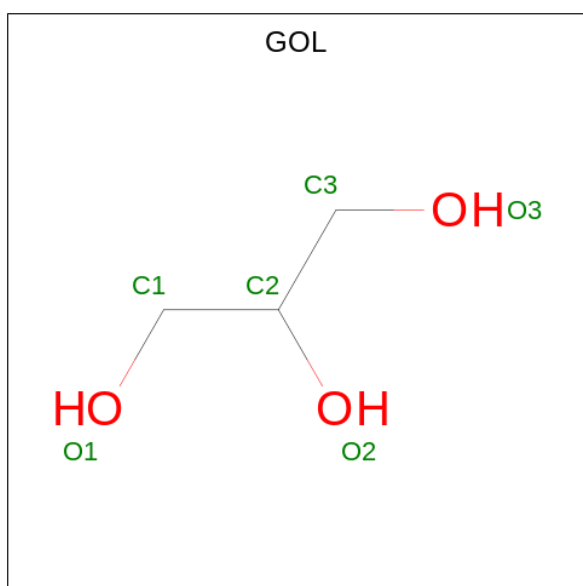
Mol	Chain	Residues	Atoms					ZeroOcc	AltConf
2	A	1	Total	C	Fe	N	O	0	1
			86	68	2	8	8		
2	B	1	Total	C	Fe	N	O	0	1
			86	68	2	8	8		

- Molecule 3 is DIMETHYL SULFOXIDE (three-letter code: DMS) (formula:  $C_2H_6OS$ ).



Mol	Chain	Residues	Atoms				ZeroOcc	AltConf
3	A	1	Total	C	O	S	0	0
			4	2	1	1		
3	B	1	Total	C	O	S	0	0
			4	2	1	1		

- Molecule 4 is GLYCEROL (three-letter code: GOL) (formula:  $C_3H_8O_3$ ).



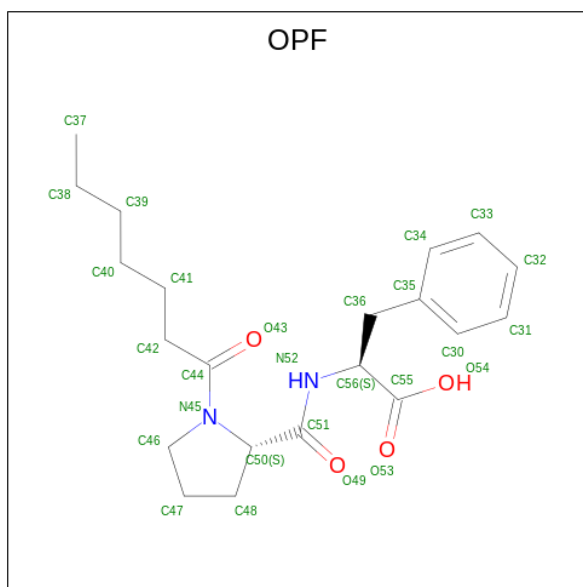
Mol	Chain	Residues	Atoms			ZeroOcc	AltConf
4	A	1	Total	C	O	0	0
			6	3	3		
4	A	1	Total	C	O	0	0
			6	3	3		

*Continued on next page...*

Continued from previous page...

Mol	Chain	Residues	Atoms			ZeroOcc	AltConf
4	A	1	Total	C	O	0	0
			6	3	3		
4	B	1	Total	C	O	0	0
			6	3	3		

- Molecule 5 is (2S)-2-[[[(2S)-1-heptanoylpyrrolidin-2-yl]carbonylamino]-3-phenyl-propanoic acid (three-letter code: OPF) (formula: C<sub>21</sub>H<sub>30</sub>N<sub>2</sub>O<sub>4</sub>) (labeled as "Ligand of Interest" by author).



Mol	Chain	Residues	Atoms				ZeroOcc	AltConf
5	A	1	Total	C	N	O	0	0
			27	21	2	4		
5	B	1	Total	C	N	O	0	0
			27	21	2	4		

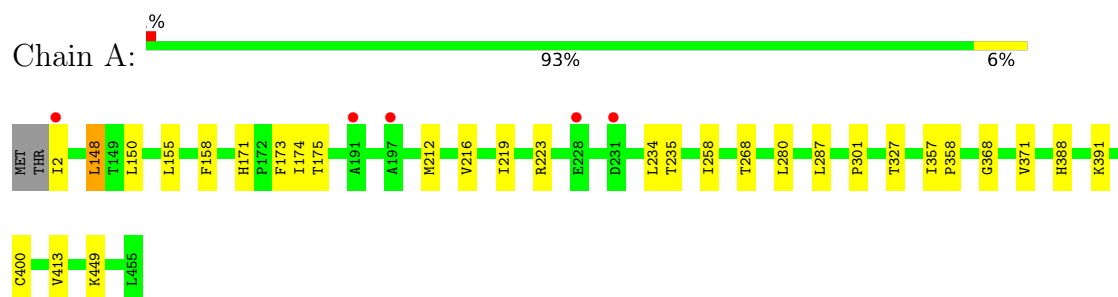
- Molecule 6 is water.

Mol	Chain	Residues	Atoms		ZeroOcc	AltConf
6	A	226	Total	O	0	0
			226	226		
6	B	188	Total	O	0	0
			188	188		

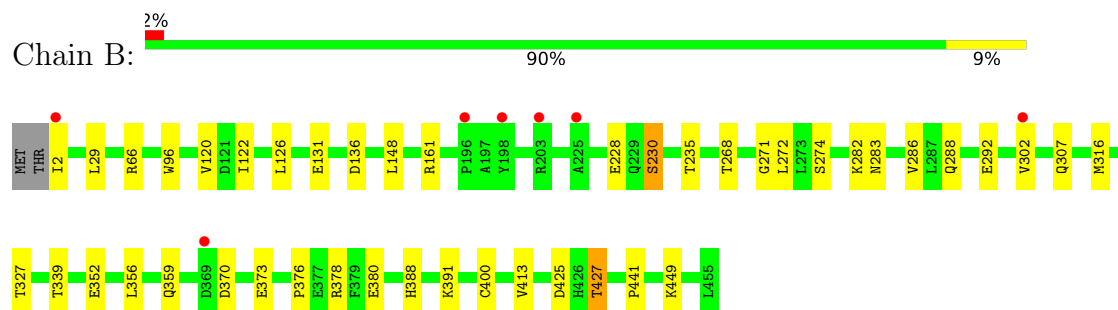
### 3 Residue-property plots

These plots are drawn for all protein, RNA, DNA and oligosaccharide chains in the entry. The first graphic for a chain summarises the proportions of the various outlier classes displayed in the second graphic. The second graphic shows the sequence view annotated by issues in geometry and electron density. Residues are color-coded according to the number of geometric quality criteria for which they contain at least one outlier: green = 0, yellow = 1, orange = 2 and red = 3 or more. A red dot above a residue indicates a poor fit to the electron density ( $RSRZ > 2$ ). Stretches of 2 or more consecutive residues without any outlier are shown as a green connector. Residues present in the sample, but not in the model, are shown in grey.

- Molecule 1: Bifunctional cytochrome P450/NADPH-P450 reductase



- Molecule 1: Bifunctional cytochrome P450/NADPH-P450 reductase



## 4 Data and refinement statistics

Property	Value	Source
Space group	P 21 21 21	Depositor
Cell constants a, b, c, $\alpha$ , $\beta$ , $\gamma$	58.83Å 128.43Å 148.89Å 90.00° 90.00° 90.00°	Depositor
Resolution (Å)	48.62 – 1.84 48.62 – 1.84	Depositor EDS
% Data completeness (in resolution range)	100.0 (48.62-1.84) 100.0 (48.62-1.84)	Depositor EDS
$R_{merge}$	0.15	Depositor
$R_{sym}$	(Not available)	Depositor
$\langle I/\sigma(I) \rangle$ <sup>1</sup>	1.84 (at 1.84Å)	Xtriage
Refinement program	REFMAC 5.8.0257	Depositor
R, $R_{free}$	0.191 , 0.226 0.199 , 0.233	Depositor DCC
$R_{free}$ test set	4925 reflections (5.00%)	wwPDB-VP
Wilson B-factor (Å <sup>2</sup> )	26.0	Xtriage
Anisotropy	0.048	Xtriage
Bulk solvent $k_{sol}$ (e/Å <sup>3</sup> ), $B_{sol}$ (Å <sup>2</sup> )	0.36 , 38.8	EDS
L-test for twinning <sup>2</sup>	$\langle  L  \rangle = 0.46$ , $\langle L^2 \rangle = 0.29$	Xtriage
Estimated twinning fraction	No twinning to report.	Xtriage
$F_o, F_c$ correlation	0.96	EDS
Total number of atoms	8271	wwPDB-VP
Average B, all atoms (Å <sup>2</sup> )	31.0	wwPDB-VP

Xtriage's analysis on translational NCS is as follows: *The analyses of the Patterson function reveals a significant off-origin peak that is 44.73 % of the origin peak, indicating pseudo-translational symmetry. The chance of finding a peak of this or larger height randomly in a structure without pseudo-translational symmetry is equal to 1.4640e-04. The detected translational NCS is most likely also responsible for the elevated intensity ratio.*

<sup>1</sup>Intensities estimated from amplitudes.

<sup>2</sup>Theoretical values of  $\langle |L| \rangle$ ,  $\langle L^2 \rangle$  for acentric reflections are 0.5, 0.333 respectively for untwinned datasets, and 0.375, 0.2 for perfectly twinned datasets.

## 5 Model quality [i](#)

### 5.1 Standard geometry [i](#)

Bond lengths and bond angles in the following residue types are not validated in this section: GOL, OPF, DMS, HEM

The Z score for a bond length (or angle) is the number of standard deviations the observed value is removed from the expected value. A bond length (or angle) with  $|Z| > 5$  is considered an outlier worth inspection. RMSZ is the root-mean-square of all Z scores of the bond lengths (or angles).

Mol	Chain	Bond lengths		Bond angles	
		RMSZ	$\# Z  > 5$	RMSZ	$\# Z  > 5$
1	A	0.76	0/3843	0.81	0/5194
1	B	0.71	0/3926	0.85	2/5308 (0.0%)
All	All	0.74	0/7769	0.83	2/10502 (0.0%)

There are no bond length outliers.

All (2) bond angle outliers are listed below:

Mol	Chain	Res	Type	Atoms	Z	Observed(°)	Ideal(°)
1	B	96	TRP	CA-CB-CG	-5.43	103.38	113.70
1	B	161	ARG	NE-CZ-NH2	-5.40	117.60	120.30

There are no chirality outliers.

There are no planarity outliers.

### 5.2 Too-close contacts [i](#)

In the following table, the Non-H and H(model) columns list the number of non-hydrogen atoms and hydrogen atoms in the chain respectively. The H(added) column lists the number of hydrogen atoms added and optimized by MolProbity. The Clashes column lists the number of clashes within the asymmetric unit, whereas Symm-Clashes lists symmetry related clashes.

Mol	Chain	Non-H	H(model)	H(added)	Clashes	Symm-Clashes
1	A	3758	0	3722	16	0
1	B	3841	0	3808	26	0
2	A	86	0	60	7	0
2	B	86	0	60	5	0
3	A	4	0	6	0	0
3	B	4	0	6	1	0
4	A	18	0	24	0	0

*Continued on next page...*



*Continued from previous page...*

Mol	Chain	Non-H	H(model)	H(added)	Clashes	Symm-Clashes
4	B	6	0	8	3	0
5	A	27	0	0	0	0
5	B	27	0	0	0	0
6	A	226	0	0	0	0
6	B	188	0	0	3	0
All	All	8271	0	7694	52	0

The all-atom clashscore is defined as the number of clashes found per 1000 atoms (including hydrogen atoms). The all-atom clashscore for this structure is 3.

All (52) close contacts within the same asymmetric unit are listed below, sorted by their clash magnitude.

Atom-1	Atom-2	Interatomic distance (Å)	Clash overlap (Å)
1:B:307:GLN:HE21	4:B:503:GOL:H2	1.22	1.03
1:B:427:THR:HB	6:B:693:HOH:O	1.81	0.80
1:A:327[B]:THR:HG22	2:A:501[B]:HEM:CBC	2.19	0.73
1:B:307:GLN:NE2	4:B:503:GOL:H2	2.05	0.69
1:B:126[B]:LEU:C	1:B:126[B]:LEU:HD13	2.17	0.65
2:B:501[B]:HEM:HBC2	2:B:501[B]:HEM:HMC1	1.77	0.65
1:B:122:ILE:HG22	1:B:148[A]:LEU:HD12	1.80	0.63
1:B:66:ARG:HH21	1:B:339[B]:THR:HG23	1.65	0.62
1:A:280:LEU:HB3	1:A:287[B]:LEU:HD23	1.82	0.61
2:A:501[B]:HEM:HMB2	2:A:501[B]:HEM:HBB2	1.83	0.61
1:B:356[B]:LEU:HD22	1:B:359:GLN:HG2	1.84	0.59
1:B:66:ARG:HH21	1:B:339[B]:THR:CG2	2.16	0.58
1:B:148[A]:LEU:HD21	1:B:413:VAL:HG21	1.87	0.57
1:B:272:LEU:N	1:B:327[B]:THR:HG21	2.21	0.56
2:A:501[B]:HEM:HBB2	2:A:501[B]:HEM:CMB	2.36	0.55
2:A:501[B]:HEM:HMC1	2:A:501[B]:HEM:HBC2	1.89	0.54
1:B:370:ASP:O	1:B:378[A]:ARG:NH2	2.38	0.52
1:B:271:GLY:C	1:B:327[B]:THR:HG21	2.30	0.51
4:B:503:GOL:H11	6:B:751:HOH:O	2.11	0.50
1:B:131:GLU:OE2	6:B:601:HOH:O	2.20	0.49
1:B:120:VAL:HG11	1:B:302[A]:VAL:CG1	2.44	0.48
1:B:288:GLN:O	1:B:292:GLU:HG3	2.14	0.47
1:B:29[B]:LEU:HD12	1:B:29[B]:LEU:HA	1.72	0.47
1:B:316:MET:HE3	1:B:376:PRO:O	2.14	0.47
1:B:388:HIS:HA	1:B:391:LYS:HD3	1.97	0.46
1:A:388:HIS:HA	1:A:391:LYS:HD3	1.98	0.46
2:A:501[A]:HEM:HMB2	2:A:501[A]:HEM:HBB2	1.98	0.46
1:B:274:SER:HB3	1:B:441:PRO:HG2	1.96	0.45

*Continued on next page...*

Continued from previous page...

Atom-1	Atom-2	Interatomic distance (Å)	Clash overlap (Å)
2:B:501[B]:HEM:CMB	2:B:501[B]:HEM:HBB2	2.47	0.45
1:A:368:GLY:O	1:A:371:VAL:HG13	2.16	0.45
1:A:223:ARG:NH1	1:A:235[B]:THR:HG23	2.32	0.44
1:A:150:LEU:HD21	1:A:174:ILE:HG13	2.00	0.44
1:A:148:LEU:HD21	1:A:413:VAL:HG21	1.99	0.44
1:A:234:LEU:HD13	1:A:258:ILE:HD11	1.99	0.44
2:B:501[B]:HEM:HMB2	2:B:501[B]:HEM:HBB2	2.00	0.43
1:B:230:SER:O	1:B:235:THR:CB	2.67	0.43
1:B:283:ASN:O	1:B:286[B]:VAL:HG13	2.18	0.43
1:A:400:CYS:HA	2:A:501[B]:HEM:CHA	2.49	0.43
1:A:357:ILE:N	1:A:358:PRO:CD	2.82	0.42
2:A:501[A]:HEM:CMB	2:A:501[A]:HEM:HBB2	2.49	0.42
1:A:268:THR:O	1:A:327[B]:THR:HG21	2.19	0.42
1:A:158:PHE:CD2	1:A:219[A]:ILE:HG21	2.55	0.42
1:A:155[B]:LEU:HA	1:A:155[B]:LEU:HD23	1.81	0.42
1:B:282:LYS:NZ	1:B:425:ASP:OD2	2.44	0.42
1:B:268:THR:HG21	3:B:502:DMS:O	2.19	0.42
1:B:283:ASN:HB3	1:B:286[B]:VAL:CG1	2.51	0.41
1:B:400:CYS:HA	2:B:501[B]:HEM:CHA	2.50	0.41
1:A:171:HIS:O	1:A:175[A]:THR:HG23	2.20	0.41
1:A:216:VAL:HA	1:A:219[A]:ILE:HD12	2.01	0.41
1:B:356[B]:LEU:HD22	1:B:359:GLN:CG	2.50	0.41
2:B:501[A]:HEM:CMB	2:B:501[A]:HEM:HBB2	2.50	0.41
1:A:173:PHE:CE2	1:A:212:MET:HG2	2.57	0.40

There are no symmetry-related clashes.

## 5.3 Torsion angles [i](#)

### 5.3.1 Protein backbone [i](#)

In the following table, the Percentiles column shows the percent Ramachandran outliers of the chain as a percentile score with respect to all X-ray entries followed by that with respect to entries of similar resolution.

The Analysed column shows the number of residues for which the backbone conformation was analysed, and the total number of residues.

Mol	Chain	Analysed	Favoured	Allowed	Outliers	Percentiles
1	A	464/456 (102%)	448 (97%)	16 (3%)	0	<b>100</b> <b>100</b>

Continued on next page...

*Continued from previous page...*

Mol	Chain	Analysed	Favoured	Allowed	Outliers	Percentiles	
1	B	474/456 (104%)	458 (97%)	16 (3%)	0	100	100
All	All	938/912 (103%)	906 (97%)	32 (3%)	0	100	100

There are no Ramachandran outliers to report.

### 5.3.2 Protein sidechains ⓘ

In the following table, the Percentiles column shows the percent sidechain outliers of the chain as a percentile score with respect to all X-ray entries followed by that with respect to entries of similar resolution.

The Analysed column shows the number of residues for which the sidechain conformation was analysed, and the total number of residues.

Mol	Chain	Analysed	Rotameric	Outliers	Percentiles	
1	A	410/400 (102%)	406 (99%)	4 (1%)	76	68
1	B	420/400 (105%)	409 (97%)	11 (3%)	46	29
All	All	830/800 (104%)	815 (98%)	15 (2%)	62	44

All (15) residues with a non-rotameric sidechain are listed below:

Mol	Chain	Res	Type
1	A	2	ILE
1	A	148	LEU
1	A	301	PRO
1	A	449	LYS
1	B	2	ILE
1	B	136	ASP
1	B	228	GLU
1	B	230	SER
1	B	352[A]	GLU
1	B	352[B]	GLU
1	B	373	GLU
1	B	380[A]	GLU
1	B	380[B]	GLU
1	B	427	THR
1	B	449	LYS

Some sidechains can be flipped to improve hydrogen bonding and reduce clashes. There are no such sidechains identified.

### 5.3.3 RNA ⓘ

There are no RNA molecules in this entry.

## 5.4 Non-standard residues in protein, DNA, RNA chains ⓘ

There are no non-standard protein/DNA/RNA residues in this entry.

## 5.5 Carbohydrates ⓘ

There are no monosaccharides in this entry.

## 5.6 Ligand geometry ⓘ

12 ligands are modelled in this entry.

In the following table, the Counts columns list the number of bonds (or angles) for which Mogul statistics could be retrieved, the number of bonds (or angles) that are observed in the model and the number of bonds (or angles) that are defined in the Chemical Component Dictionary. The Link column lists molecule types, if any, to which the group is linked. The Z score for a bond length (or angle) is the number of standard deviations the observed value is removed from the expected value. A bond length (or angle) with  $|Z| > 2$  is considered an outlier worth inspection. RMSZ is the root-mean-square of all Z scores of the bond lengths (or angles).

Mol	Type	Chain	Res	Link	Bond lengths			Bond angles		
					Counts	RMSZ	$\# Z  > 2$	Counts	RMSZ	$\# Z  > 2$
2	HEM	A	501[A]	1,3	27,50,50	1.12	3 (11%)	17,82,82	1.53	3 (17%)
5	OPF	A	506	-	25,28,28	0.61	0	31,36,36	1.19	2 (6%)
4	GOL	B	503	-	5,5,5	0.26	0	5,5,5	0.87	0
2	HEM	A	501[B]	1,3	27,50,50	0.97	2 (7%)	17,82,82	1.67	3 (17%)
3	DMS	A	502	2	3,3,3	0.44	0	3,3,3	0.37	0
2	HEM	B	501[B]	1,3	27,50,50	0.92	1 (3%)	17,82,82	1.54	3 (17%)
2	HEM	B	501[A]	1,3	27,50,50	0.92	2 (7%)	17,82,82	1.60	3 (17%)
4	GOL	A	505	-	5,5,5	0.17	0	5,5,5	0.53	0
5	OPF	B	504	-	25,28,28	0.60	0	31,36,36	0.85	1 (3%)
3	DMS	B	502	2	3,3,3	0.30	0	3,3,3	0.39	0
4	GOL	A	503	-	5,5,5	0.25	0	5,5,5	0.56	0
4	GOL	A	504	-	5,5,5	0.14	0	5,5,5	0.36	0

In the following table, the Chirals column lists the number of chiral outliers, the number of chiral centers analysed, the number of these observed in the model and the number defined in the Chemical Component Dictionary. Similar counts are reported in the Torsion and Rings columns.

'-' means no outliers of that kind were identified.

Mol	Type	Chain	Res	Link	Chirals	Torsions	Rings
2	HEM	A	501[A]	1,3	-	0/6/54/54	-
5	OPF	A	506	-	-	4/22/36/36	0/2/2/2
4	GOL	B	503	-	-	2/4/4/4	-
2	HEM	A	501[B]	1,3	-	0/6/54/54	-
2	HEM	B	501[B]	1,3	-	0/6/54/54	-
2	HEM	B	501[A]	1,3	-	0/6/54/54	-
4	GOL	A	505	-	-	3/4/4/4	-
5	OPF	B	504	-	-	1/22/36/36	0/2/2/2
4	GOL	A	503	-	-	2/4/4/4	-
4	GOL	A	504	-	-	4/4/4/4	-

All (8) bond length outliers are listed below:

Mol	Chain	Res	Type	Atoms	Z	Observed(Å)	Ideal(Å)
2	B	501[B]	HEM	C4D-C3D	2.89	1.49	1.42
2	A	501[B]	HEM	C3B-C2B	-2.76	1.36	1.40
2	A	501[A]	HEM	C4D-C3D	2.76	1.48	1.42
2	A	501[A]	HEM	C3B-C2B	-2.65	1.36	1.40
2	A	501[B]	HEM	C4D-C3D	2.58	1.48	1.42
2	B	501[A]	HEM	C4D-C3D	2.35	1.47	1.42
2	A	501[A]	HEM	C1A-NA	2.32	1.40	1.36
2	B	501[A]	HEM	C3B-C2B	-2.23	1.37	1.40

All (15) bond angle outliers are listed below:

Mol	Chain	Res	Type	Atoms	Z	Observed(°)	Ideal(°)
2	A	501[B]	HEM	CMC-C2C-C3C	3.67	131.55	124.68
2	A	501[A]	HEM	CBD-CAD-C3D	-3.36	106.28	112.48
2	A	501[B]	HEM	CBA-CAA-C2A	-3.31	106.39	112.49
5	A	506	OPF	C48-C50-C51	-3.22	104.35	111.22
2	B	501[B]	HEM	CMA-C3A-C4A	-2.96	123.92	128.46
2	B	501[A]	HEM	CMB-C2B-C3B	2.78	129.88	124.68
2	B	501[A]	HEM	CBD-CAD-C3D	-2.65	107.59	112.48
2	B	501[B]	HEM	CMC-C2C-C3C	2.65	129.63	124.68
2	B	501[A]	HEM	CMC-C2C-C3C	2.53	129.41	124.68
2	B	501[B]	HEM	CBA-CAA-C2A	-2.51	107.86	112.49
2	A	501[A]	HEM	C4C-C3C-C2C	-2.47	105.17	106.90
2	A	501[B]	HEM	CMA-C3A-C4A	-2.24	125.01	128.46
5	A	506	OPF	C39-C40-C41	-2.23	103.11	114.42
2	A	501[A]	HEM	CBA-CAA-C2A	-2.06	108.69	112.49

*Continued on next page...*

*Continued from previous page...*

Mol	Chain	Res	Type	Atoms	Z	Observed(°)	Ideal(°)
5	B	504	OPF	C48-C50-N45	-2.03	100.01	103.03

There are no chirality outliers.

All (16) torsion outliers are listed below:

Mol	Chain	Res	Type	Atoms
5	A	506	OPF	C55-C56-N52-C51
4	A	503	GOL	C1-C2-C3-O3
4	A	504	GOL	C1-C2-C3-O3
4	A	504	GOL	O2-C2-C3-O3
4	B	503	GOL	C1-C2-C3-O3
4	A	505	GOL	O1-C1-C2-C3
4	A	505	GOL	C1-C2-C3-O3
4	A	504	GOL	O1-C1-C2-C3
4	B	503	GOL	O2-C2-C3-O3
4	A	505	GOL	O2-C2-C3-O3
4	A	503	GOL	O2-C2-C3-O3
4	A	504	GOL	O1-C1-C2-O2
5	B	504	OPF	C55-C56-N52-C51
5	A	506	OPF	C37-C38-C39-C40
5	A	506	OPF	C39-C40-C41-C42
5	A	506	OPF	C36-C56-N52-C51

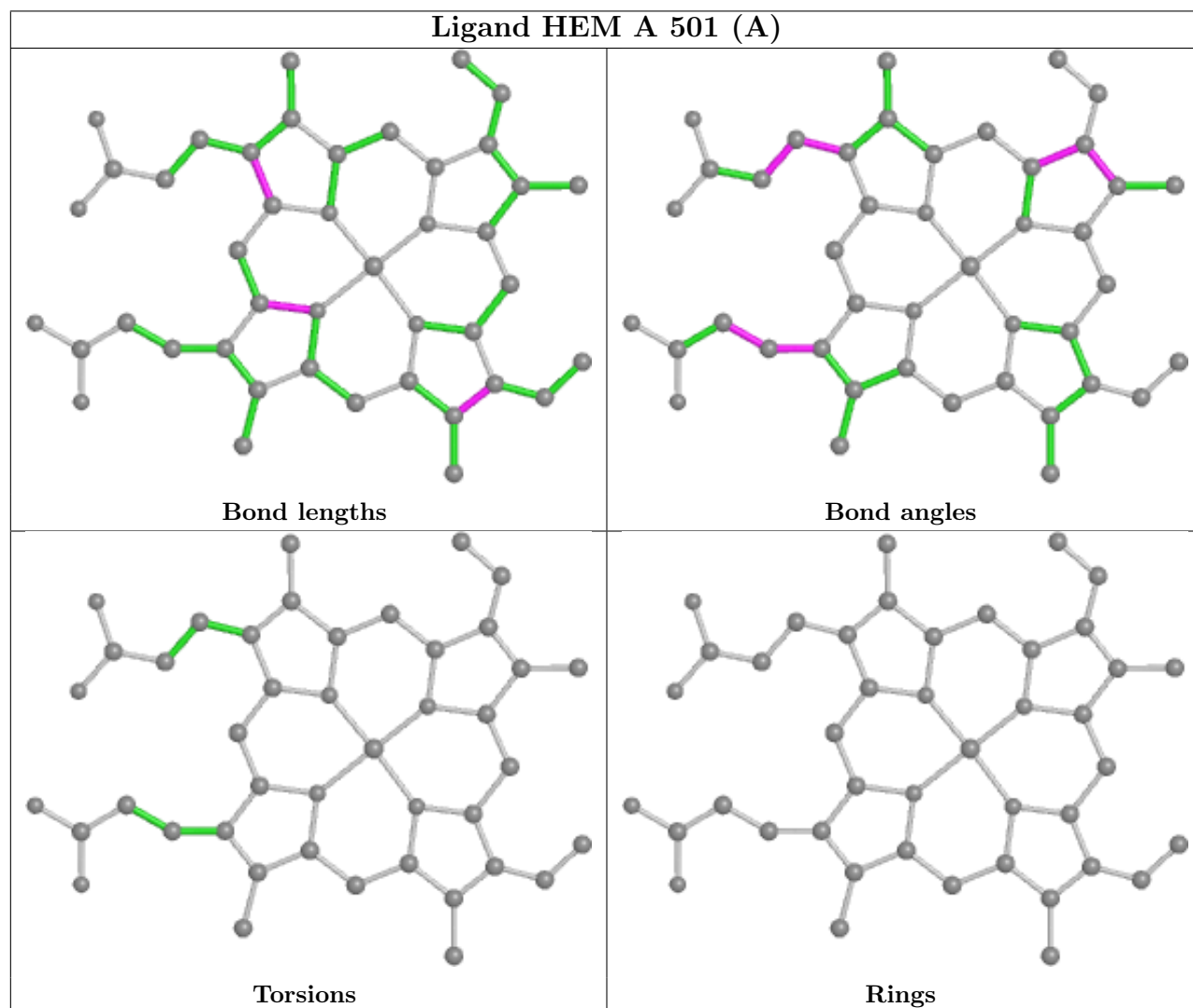
There are no ring outliers.

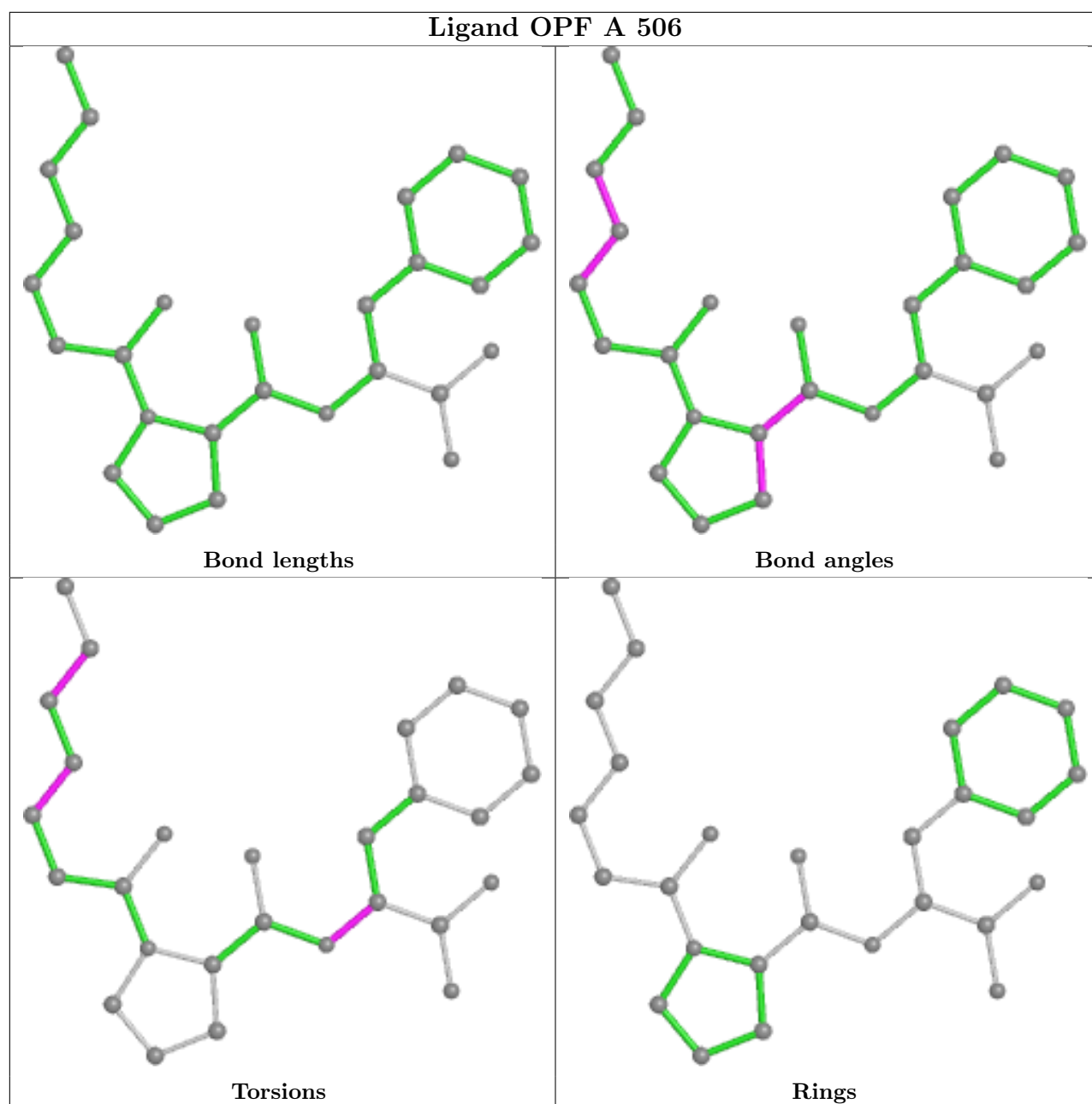
6 monomers are involved in 16 short contacts:

Mol	Chain	Res	Type	Clashes	Symm-Clashes
2	A	501[A]	HEM	2	0
4	B	503	GOL	3	0
2	A	501[B]	HEM	5	0
2	B	501[B]	HEM	4	0
2	B	501[A]	HEM	1	0
3	B	502	DMS	1	0

The following is a two-dimensional graphical depiction of Mogul quality analysis of bond lengths, bond angles, torsion angles, and ring geometry for all instances of the Ligand of Interest. In addition, ligands with molecular weight > 250 and outliers as shown on the validation Tables will also be included. For torsion angles, if less than 5% of the Mogul distribution of torsion angles is within 10 degrees of the torsion angle in question, then that torsion angle is considered an outlier. Any bond that is central to one or more torsion angles identified as an outlier by Mogul will be highlighted in the graph. For rings, the root-mean-square deviation (RMSD) between the ring in question and similar rings identified by Mogul is calculated over all ring torsion angles. If the

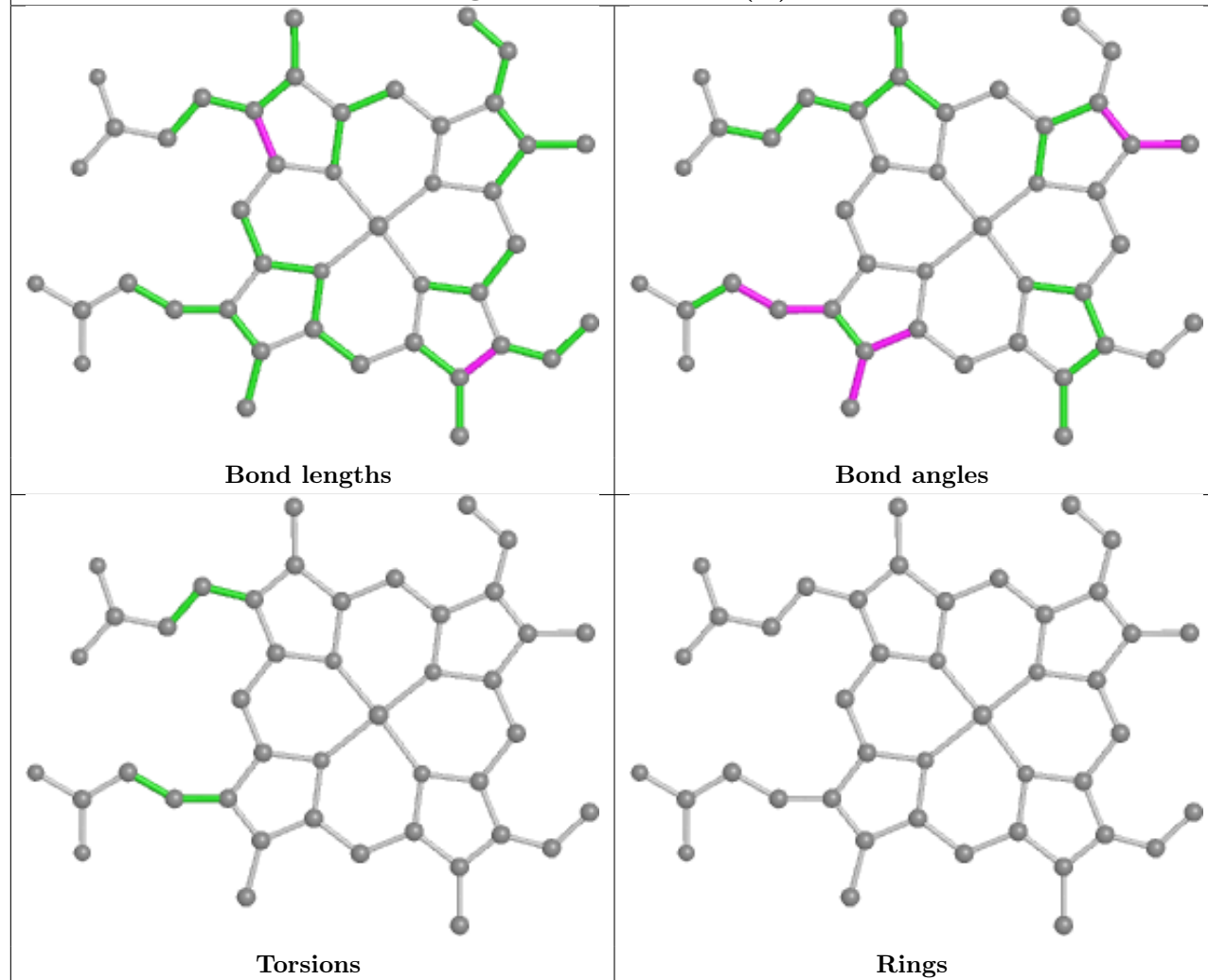
average RMSD is greater than 60 degrees and the minimal RMSD between the ring in question and any Mogul-identified rings is also greater than 60 degrees, then that ring is considered an outlier. The outliers are highlighted in purple. The color gray indicates Mogul did not find sufficient equivalents in the CSD to analyse the geometry.



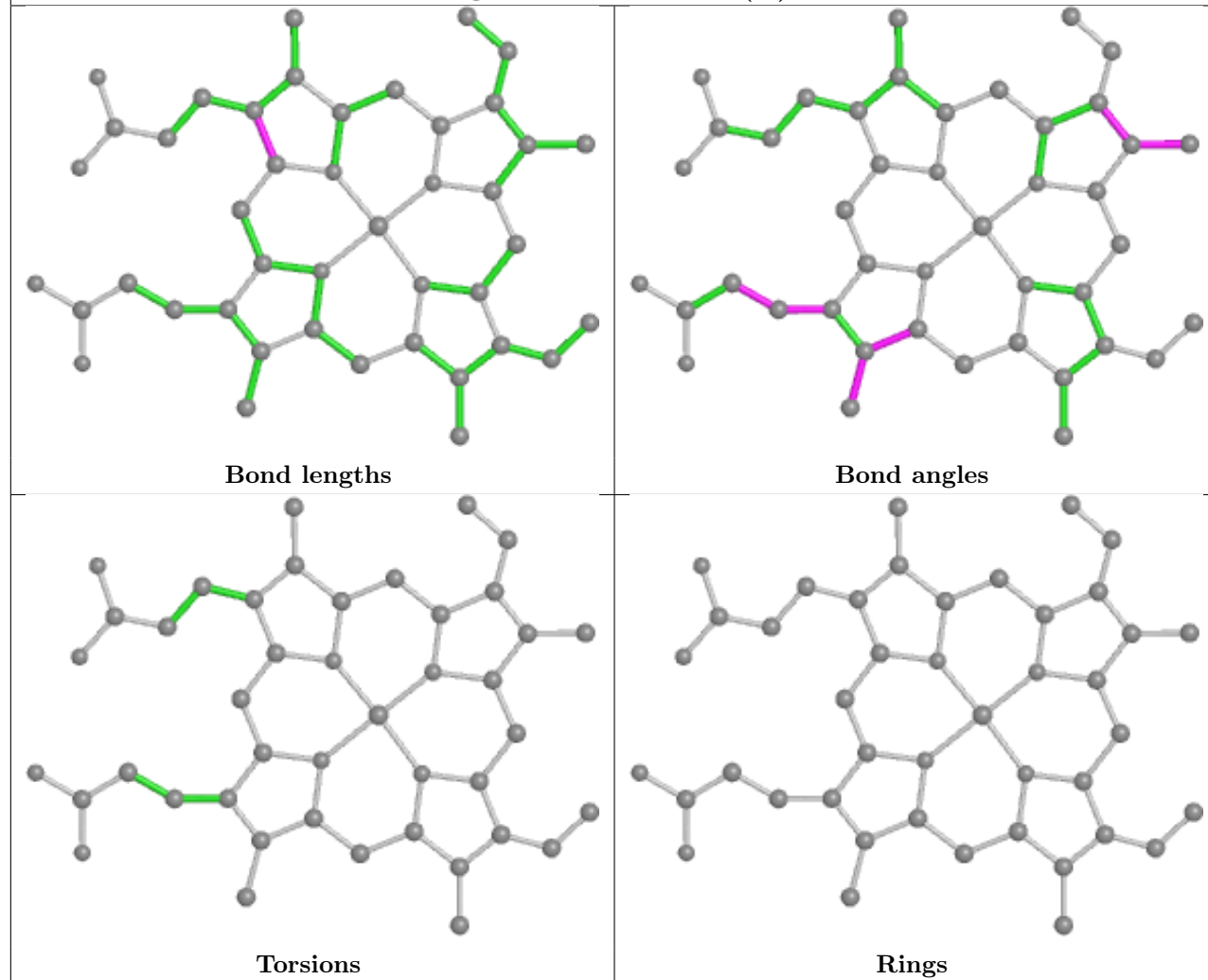




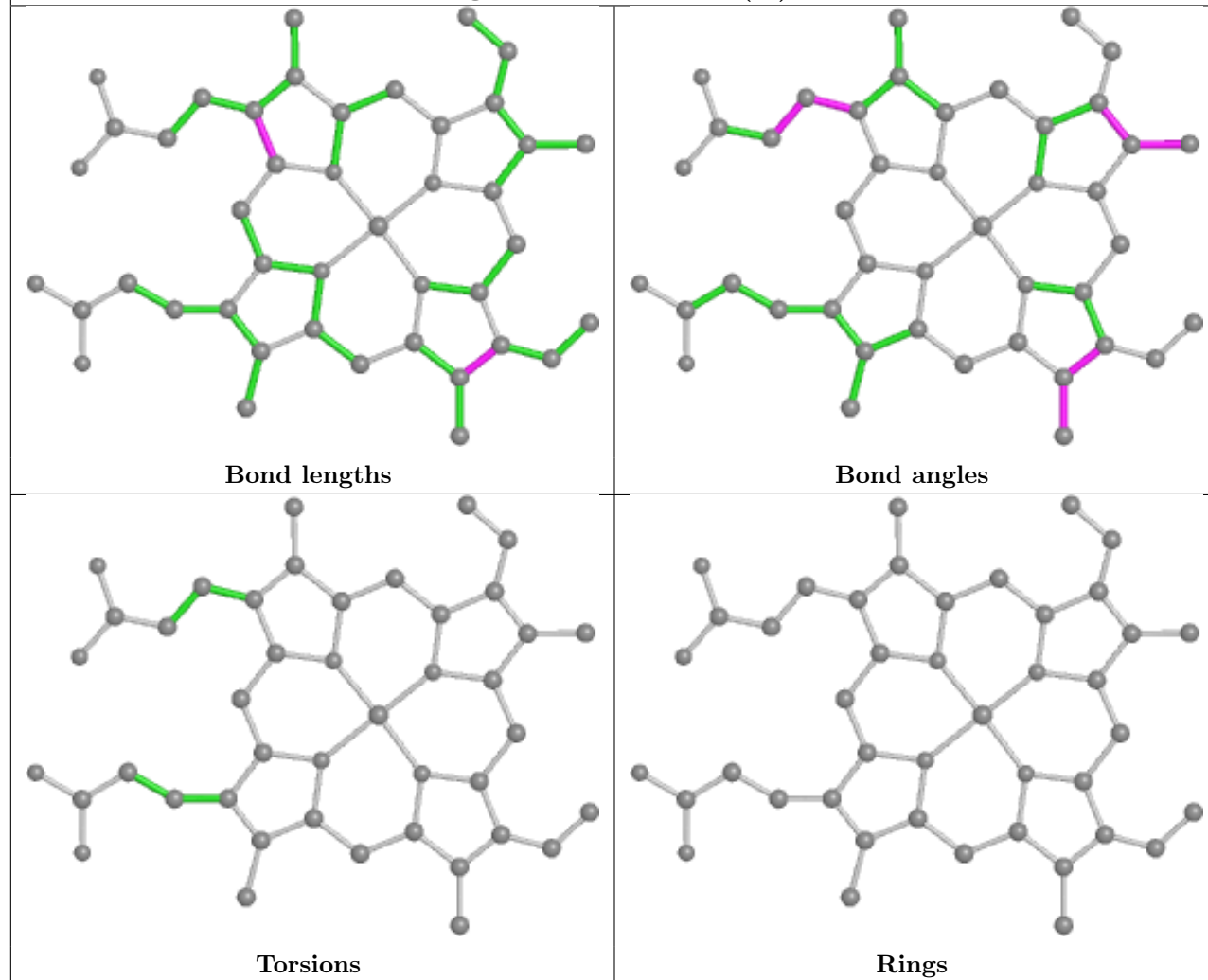
## Ligand HEM A 501 (B)

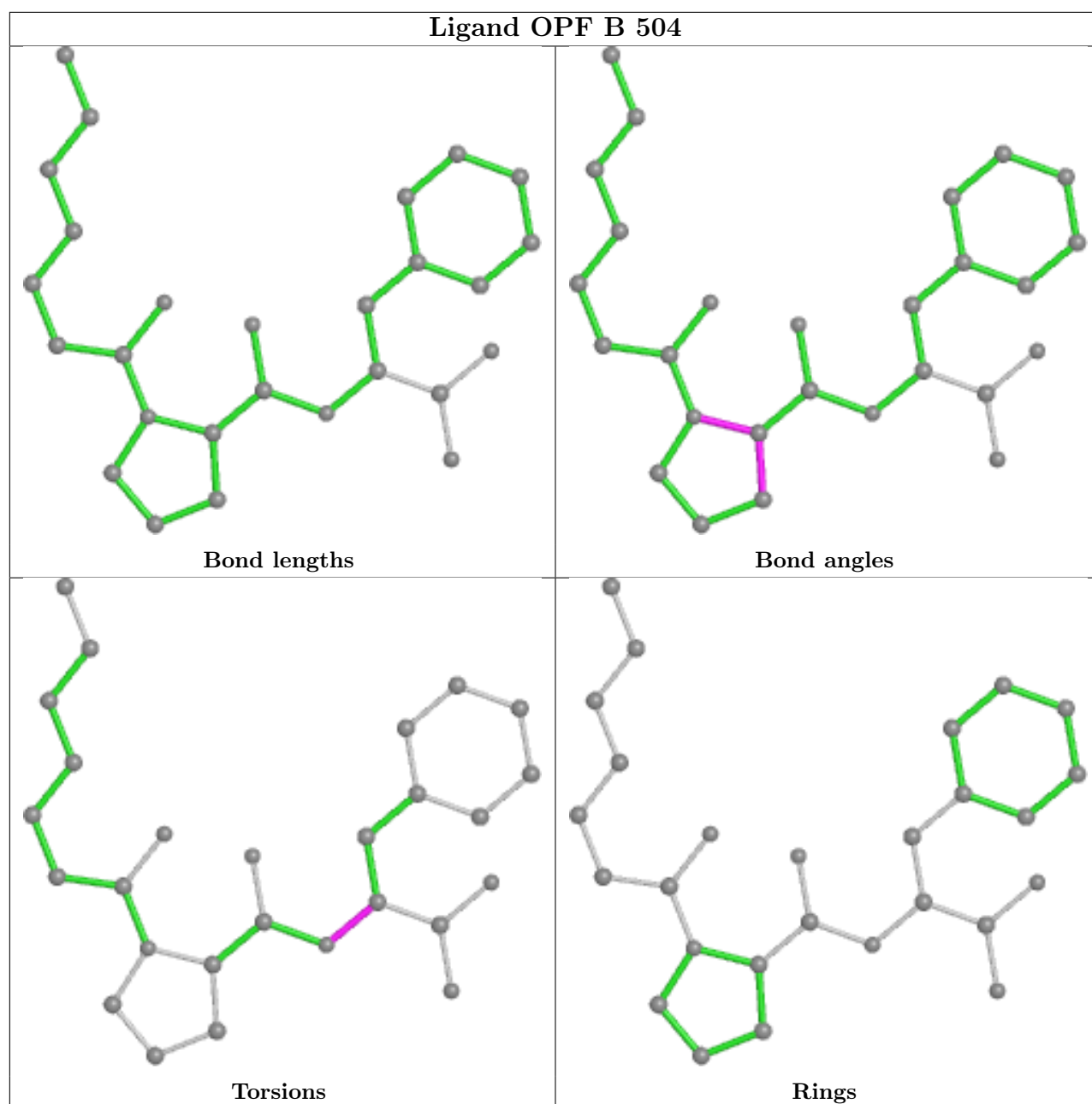


## Ligand HEM B 501 (B)



## Ligand HEM B 501 (A)





## 5.7 Other polymers [i](#)

There are no such residues in this entry.

## 5.8 Polymer linkage issues [i](#)

There are no chain breaks in this entry.

## 6 Fit of model and data [i](#)

### 6.1 Protein, DNA and RNA chains [i](#)

In the following table, the column labelled ‘#RSRZ > 2’ contains the number (and percentage) of RSRZ outliers, followed by percent RSRZ outliers for the chain as percentile scores relative to all X-ray entries and entries of similar resolution. The OWAB column contains the minimum, median, 95<sup>th</sup> percentile and maximum values of the occupancy-weighted average B-factor per residue. The column labelled ‘Q < 0.9’ lists the number of (and percentage) of residues with an average occupancy less than 0.9.

Mol	Chain	Analysed	<RSRZ>	#RSRZ>2	OWAB(Å <sup>2</sup> )	Q<0.9
1	A	454/456 (99%)	-0.19	5 (1%) 80 80	17, 26, 52, 76	0
1	B	454/456 (99%)	-0.13	7 (1%) 73 73	19, 31, 53, 73	0
All	All	908/912 (99%)	-0.16	12 (1%) 77 77	17, 29, 53, 76	0

All (12) RSRZ outliers are listed below:

Mol	Chain	Res	Type	RSRZ
1	B	196	PRO	4.3
1	B	2	ILE	4.2
1	A	2	ILE	3.8
1	B	302[A]	VAL	3.5
1	A	228	GLU	2.6
1	B	369	ASP	2.6
1	A	191	ALA	2.5
1	A	197	ALA	2.3
1	B	203	ARG	2.1
1	B	225	ALA	2.1
1	B	198	TYR	2.1
1	A	231[A]	ASP	2.1

### 6.2 Non-standard residues in protein, DNA, RNA chains [i](#)

There are no non-standard protein/DNA/RNA residues in this entry.

### 6.3 Carbohydrates [i](#)

There are no monosaccharides in this entry.

## 6.4 Ligands

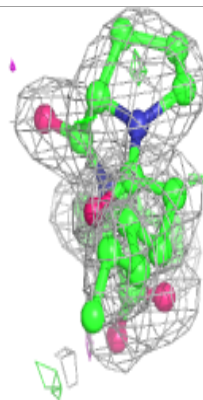
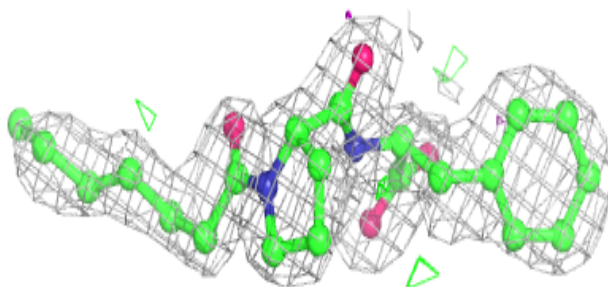
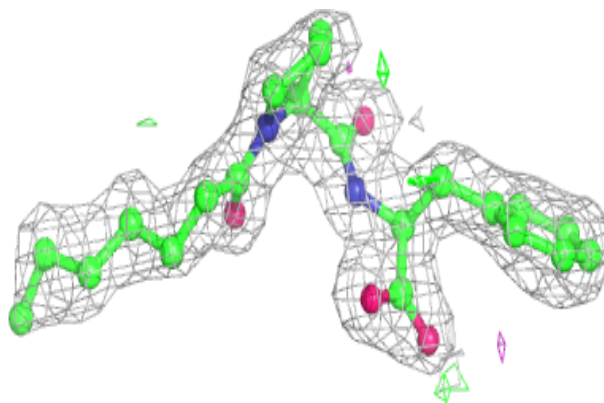
In the following table, the Atoms column lists the number of modelled atoms in the group and the number defined in the chemical component dictionary. The B-factors column lists the minimum, median, 95<sup>th</sup> percentile and maximum values of B factors of atoms in the group. The column labelled 'Q< 0.9' lists the number of atoms with occupancy less than 0.9.

Mol	Type	Chain	Res	Atoms	RSCC	RSR	B-factors(Å <sup>2</sup> )	Q<0.9
4	GOL	A	504	6/6	0.83	0.28	41,55,57,60	0
4	GOL	A	505	6/6	0.85	0.18	44,47,50,51	0
4	GOL	A	503	6/6	0.88	0.14	31,43,44,47	0
4	GOL	B	503	6/6	0.91	0.40	36,45,50,63	0
5	OPF	A	506	27/27	0.91	0.16	32,43,50,51	0
5	OPF	B	504	27/27	0.94	0.11	30,38,43,45	0
3	DMS	A	502	4/4	0.96	0.11	35,35,37,46	0
3	DMS	B	502	4/4	0.97	0.10	35,36,37,37	0
2	HEM	B	501[A]	43/43	0.98	0.10	14,16,19,20	43
2	HEM	B	501[B]	43/43	0.98	0.10	17,20,23,23	43
2	HEM	A	501[A]	43/43	0.99	0.08	17,18,20,21	43
2	HEM	A	501[B]	43/43	0.99	0.08	18,20,22,23	43

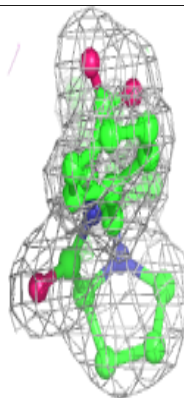
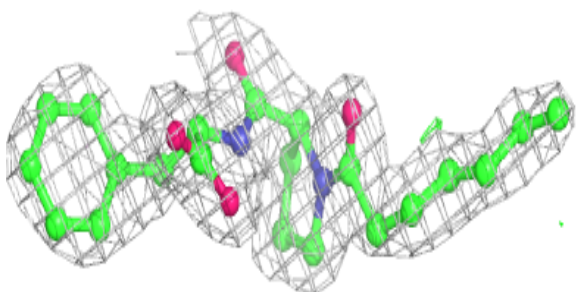
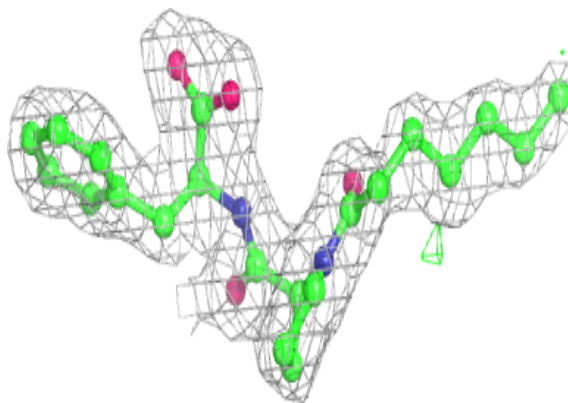
The following is a graphical depiction of the model fit to experimental electron density of all instances of the Ligand of Interest. In addition, ligands with molecular weight > 250 and outliers as shown on the geometry validation Tables will also be included. Each fit is shown from different orientation to approximate a three-dimensional view.

**Electron density around OPF A 506:**

$2mF_o-DF_c$  (at 0.7 rmsd) in gray  
 $mF_o-DF_c$  (at 3 rmsd) in purple (negative)  
and green (positive)

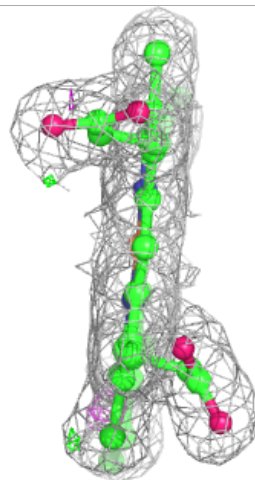
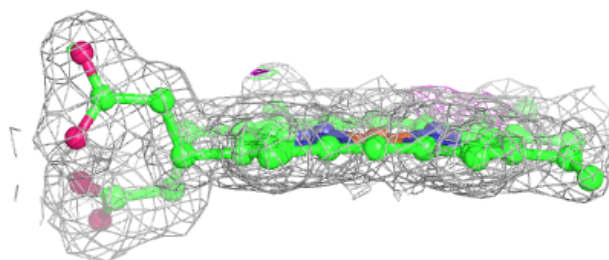
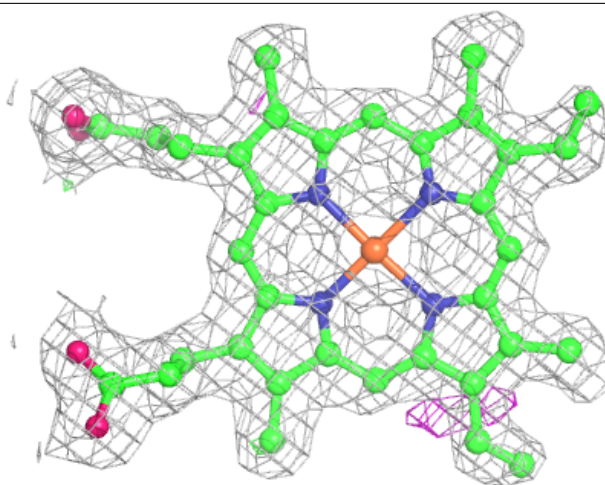
**Electron density around OPF B 504:**

$2mF_o-DF_c$  (at 0.7 rmsd) in gray  
 $mF_o-DF_c$  (at 3 rmsd) in purple (negative)  
and green (positive)



**Electron density around HEM B 501 (A):**

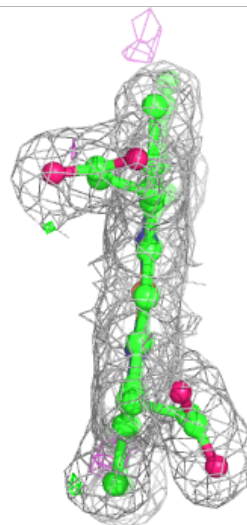
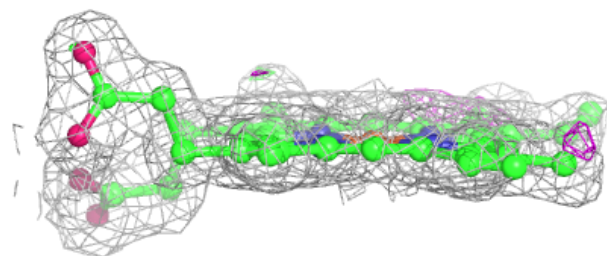
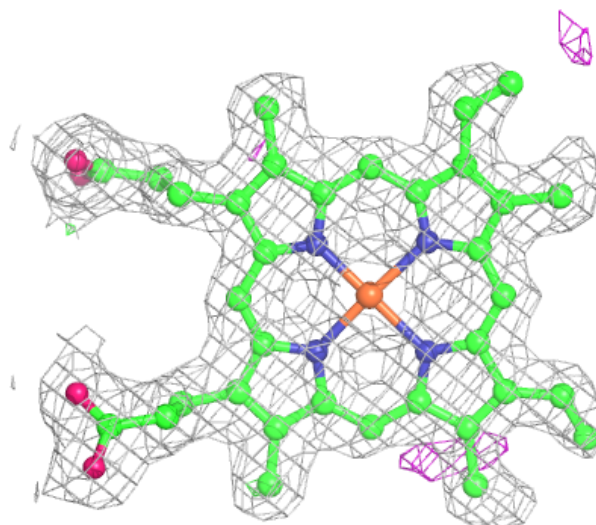
$2mF_o-DF_c$  (at 0.7 rmsd) in gray  
 $mF_o-DF_c$  (at 3 rmsd) in purple (negative)  
and green (positive)





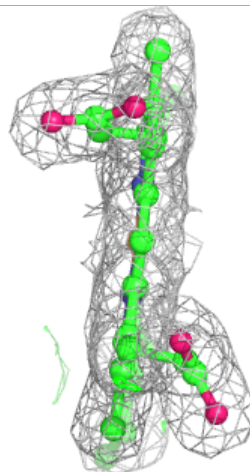
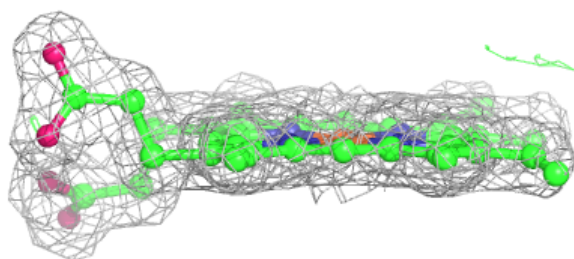
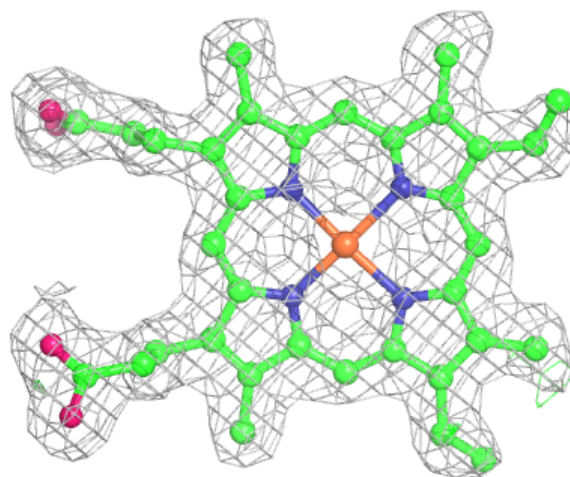
**Electron density around HEM B 501 (B):**

$2mF_o-DF_c$  (at 0.7 rmsd) in gray  
 $mF_o-DF_c$  (at 3 rmsd) in purple (negative)  
and green (positive)



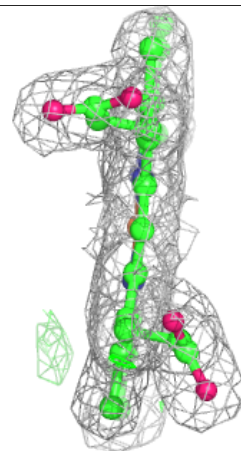
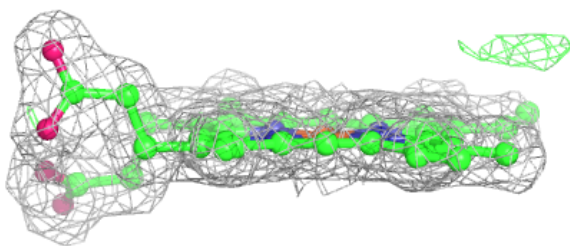
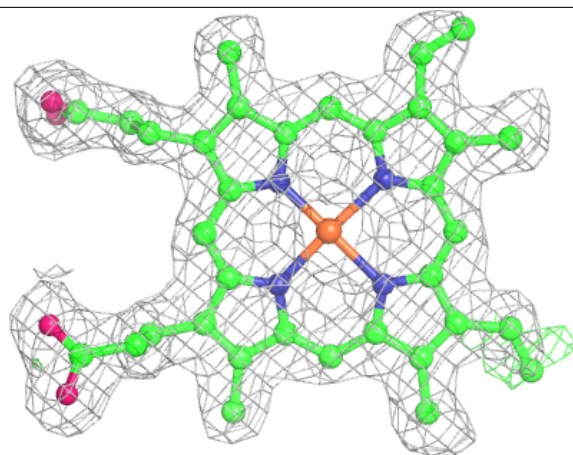
**Electron density around HEM A 501 (A):**

$2mF_o-DF_c$  (at 0.7 rmsd) in gray  
 $mF_o-DF_c$  (at 3 rmsd) in purple (negative)  
and green (positive)



**Electron density around HEM A 501 (B):**

$2mF_o-DF_c$  (at 0.7 rmsd) in gray  
 $mF_o-DF_c$  (at 3 rmsd) in purple (negative)  
and green (positive)



## 6.5 Other polymers [i](#)

There are no such residues in this entry.