



Full wwPDB X-ray Structure Validation Report ⓘ

May 16, 2020 – 12:08 pm BST

PDB ID : 4L63
Title : Apo form of AB5 holotoxin
Authors : Littler, D.R.; Ng, N.M.; Rossjohn, J.; Beddoe, T.
Deposited on : 2013-06-11
Resolution : 1.80 Å(reported)

This is a Full wwPDB X-ray Structure Validation Report for a publicly released PDB entry.

We welcome your comments at validation@mail.wwpdb.org

A user guide is available at

<https://www.wwpdb.org/validation/2017/XrayValidationReportHelp>

with specific help available everywhere you see the ⓘ symbol.

The following versions of software and data (see [references ⓘ](#)) were used in the production of this report:

MolProbity : 4.02b-467
Mogul : 1.8.5 (274361), CSD as541be (2020)
Xtriage (Phenix) : 1.13
EDS : 2.11
Percentile statistics : 20191225.v01 (using entries in the PDB archive December 25th 2019)
Refmac : 5.8.0158
CCP4 : 7.0.044 (Gargrove)
Ideal geometry (proteins) : Engh & Huber (2001)
Ideal geometry (DNA, RNA) : Parkinson et al. (1996)
Validation Pipeline (wwPDB-VP) : 2.11

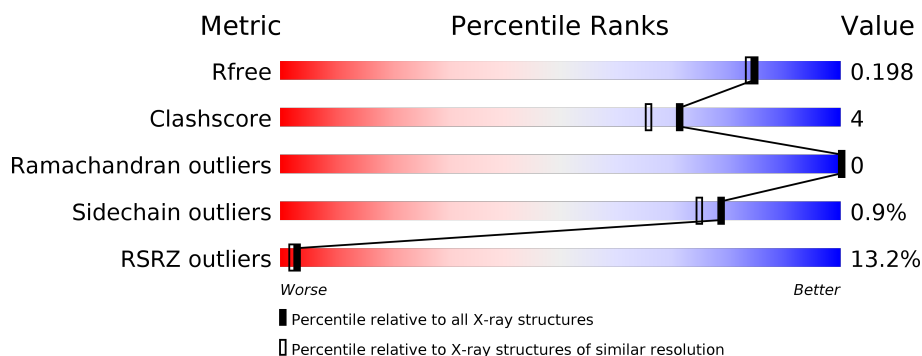
1 Overall quality at a glance

The following experimental techniques were used to determine the structure:

X-RAY DIFFRACTION

The reported resolution of this entry is 1.80 Å.

Percentile scores (ranging between 0-100) for global validation metrics of the entry are shown in the following graphic. The table shows the number of entries on which the scores are based.



Metric	Whole archive (#Entries)	Similar resolution (#Entries, resolution range(Å))
R_{free}	130704	5950 (1.80-1.80)
Clashscore	141614	6793 (1.80-1.80)
Ramachandran outliers	138981	6697 (1.80-1.80)
Sidechain outliers	138945	6696 (1.80-1.80)
RSRZ outliers	127900	5850 (1.80-1.80)

The table below summarises the geometric issues observed across the polymeric chains and their fit to the electron density. The red, orange, yellow and green segments on the lower bar indicate the fraction of residues that contain outliers for ≥ 3 , 2, 1 and 0 types of geometric quality criteria respectively. A grey segment represents the fraction of residues that are not modelled. The numeric value for each fraction is indicated below the corresponding segment, with a dot representing fractions $\leq 5\%$. The upper red bar (where present) indicates the fraction of residues that have poor fit to the electron density. The numeric value is given above the bar.

Mol	Chain	Length	Quality of chain
1	A	266	<div> <div>34%</div> <div> <div></div> <div>76%</div> <div>17%</div> <div>6%</div> </div> </div>
2	B	112	<div> <div>2%</div> <div> <div></div> <div>94%</div> <div>6%</div> </div> </div>
2	C	112	<div> <div>2%</div> <div> <div></div> <div>91%</div> <div>6%</div> </div> </div>
2	D	112	<div> <div>4%</div> <div> <div></div> <div>84%</div> <div>10%</div> <div>6%</div> </div> </div>
2	E	112	<div> <div>3%</div> <div> <div></div> <div>88%</div> <div>5%</div> <div>7%</div> </div> </div>
2	F	112	<div> <div></div> <div> <div></div> <div>88%</div> <div>8%</div> </div> </div>

2 Entry composition

There are 5 unique types of molecules in this entry. The entry contains 6569 atoms, of which 0 are hydrogens and 0 are deuteriums.

In the tables below, the ZeroOcc column contains the number of atoms modelled with zero occupancy, the AltConf column contains the number of residues with at least one atom in alternate conformation and the Trace column contains the number of residues modelled with at most 2 atoms.

- Molecule 1 is a protein called ECXA.

Mol	Chain	Residues	Atoms					ZeroOcc	AltConf	Trace
1	A	249	Total	C	N	O	S	0	1	0
			1952	1221	351	374	6			

There is a discrepancy between the modelled and reference sequences:

Chain	Residue	Modelled	Actual	Comment	Reference
A	20	MET	-	EXPRESSION TAG	UNP Q8GAV4

- Molecule 2 is a protein called ECXB.

Mol	Chain	Residues	Atoms					ZeroOcc	AltConf	Trace
2	B	105	Total	C	N	O	S	0	0	0
			825	518	140	161	6			
2	C	105	Total	C	N	O	S	0	2	0
			826	518	140	163	5			
2	D	105	Total	C	N	O	S	0	0	0
			822	516	140	161	5			
2	E	104	Total	C	N	O	S	0	1	0
			824	517	140	162	5			
2	F	103	Total	C	N	O	S	0	0	0
			809	507	138	159	5			

There are 45 discrepancies between the modelled and reference sequences:

Chain	Residue	Modelled	Actual	Comment	Reference
B	0	MET	-	INITIATING METHIONINE	UNP Q8GAV3
B	104	LEU	-	EXPRESSION TAG	UNP Q8GAV3
B	105	GLU	-	EXPRESSION TAG	UNP Q8GAV3
B	106	HIS	-	EXPRESSION TAG	UNP Q8GAV3
B	107	HIS	-	EXPRESSION TAG	UNP Q8GAV3
B	108	HIS	-	EXPRESSION TAG	UNP Q8GAV3
B	109	HIS	-	EXPRESSION TAG	UNP Q8GAV3

Continued on next page...

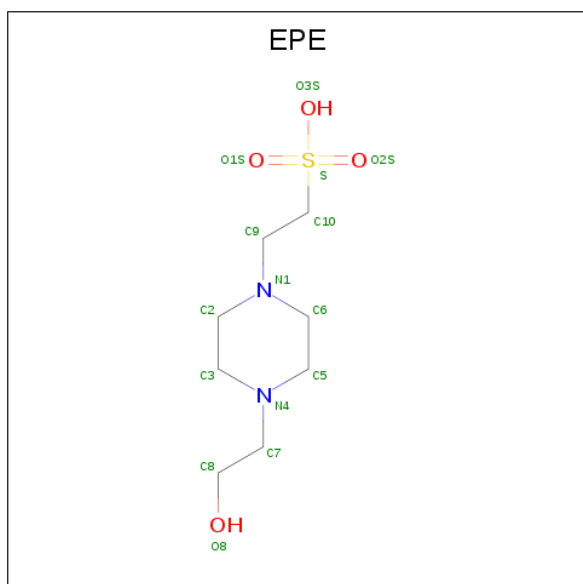
Continued from previous page...

Chain	Residue	Modelled	Actual	Comment	Reference
B	110	HIS	-	EXPRESSION TAG	UNP Q8GAV3
B	111	HIS	-	EXPRESSION TAG	UNP Q8GAV3
C	0	MET	-	INITIATING METHIONINE	UNP Q8GAV3
C	104	LEU	-	EXPRESSION TAG	UNP Q8GAV3
C	105	GLU	-	EXPRESSION TAG	UNP Q8GAV3
C	106	HIS	-	EXPRESSION TAG	UNP Q8GAV3
C	107	HIS	-	EXPRESSION TAG	UNP Q8GAV3
C	108	HIS	-	EXPRESSION TAG	UNP Q8GAV3
C	109	HIS	-	EXPRESSION TAG	UNP Q8GAV3
C	110	HIS	-	EXPRESSION TAG	UNP Q8GAV3
C	111	HIS	-	EXPRESSION TAG	UNP Q8GAV3
D	0	MET	-	INITIATING METHIONINE	UNP Q8GAV3
D	104	LEU	-	EXPRESSION TAG	UNP Q8GAV3
D	105	GLU	-	EXPRESSION TAG	UNP Q8GAV3
D	106	HIS	-	EXPRESSION TAG	UNP Q8GAV3
D	107	HIS	-	EXPRESSION TAG	UNP Q8GAV3
D	108	HIS	-	EXPRESSION TAG	UNP Q8GAV3
D	109	HIS	-	EXPRESSION TAG	UNP Q8GAV3
D	110	HIS	-	EXPRESSION TAG	UNP Q8GAV3
D	111	HIS	-	EXPRESSION TAG	UNP Q8GAV3
E	0	MET	-	INITIATING METHIONINE	UNP Q8GAV3
E	104	LEU	-	EXPRESSION TAG	UNP Q8GAV3
E	105	GLU	-	EXPRESSION TAG	UNP Q8GAV3
E	106	HIS	-	EXPRESSION TAG	UNP Q8GAV3
E	107	HIS	-	EXPRESSION TAG	UNP Q8GAV3
E	108	HIS	-	EXPRESSION TAG	UNP Q8GAV3
E	109	HIS	-	EXPRESSION TAG	UNP Q8GAV3
E	110	HIS	-	EXPRESSION TAG	UNP Q8GAV3
E	111	HIS	-	EXPRESSION TAG	UNP Q8GAV3
F	0	MET	-	INITIATING METHIONINE	UNP Q8GAV3
F	104	LEU	-	EXPRESSION TAG	UNP Q8GAV3
F	105	GLU	-	EXPRESSION TAG	UNP Q8GAV3
F	106	HIS	-	EXPRESSION TAG	UNP Q8GAV3
F	107	HIS	-	EXPRESSION TAG	UNP Q8GAV3
F	108	HIS	-	EXPRESSION TAG	UNP Q8GAV3
F	109	HIS	-	EXPRESSION TAG	UNP Q8GAV3
F	110	HIS	-	EXPRESSION TAG	UNP Q8GAV3
F	111	HIS	-	EXPRESSION TAG	UNP Q8GAV3

- Molecule 3 is ZINC ION (three-letter code: ZN) (formula: Zn).

Mol	Chain	Residues	Atoms		ZeroOcc	AltConf
3	A	1	Total	Zn	0	0
			1	1		

- Molecule 4 is 4-(2-HYDROXYETHYL)-1-PIPERAZINE ETHANESULFONIC ACID (three-letter code: EPE) (formula: C₈H₁₈N₂O₄S).



Mol	Chain	Residues	Atoms					ZeroOcc	AltConf
4	B	1	Total	C	N	O	S	0	0
			15	8	2	4	1		
4	C	1	Total	C	N	O	S	0	0
			15	8	2	4	1		
4	D	1	Total	C	N	O	S	0	0
			15	8	2	4	1		
4	E	1	Total	C	N	O	S	0	0
			15	8	2	4	1		
4	F	1	Total	C	N	O	S	0	0
			15	8	2	4	1		

- Molecule 5 is water.

Mol	Chain	Residues	Atoms		ZeroOcc	AltConf
5	A	64	Total	O	0	0
			64	64		
5	B	56	Total	O	0	0
			56	56		
5	C	88	Total	O	0	0
			88	88		

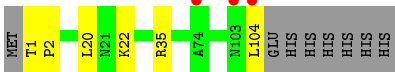
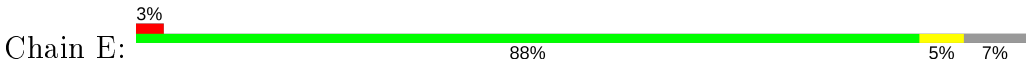
Continued on next page...

Continued from previous page...

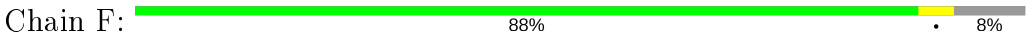
Mol	Chain	Residues	Atoms		ZeroOcc	AltConf
5	D	90	Total	O	0	0
			90	90		
5	E	81	Total	O	0	0
			81	81		
5	F	56	Total	O	0	0
			56	56		

- Molecule 1: ECXA





● Molecule 2: ECXB



4 Data and refinement statistics

Property	Value	Source
Space group	P 65 2 2	Depositor
Cell constants a, b, c, α , β , γ	120.53Å 120.53Å 273.51Å 90.00° 90.00° 120.00°	Depositor
Resolution (Å)	45.21 – 1.80 45.21 – 1.80	Depositor EDS
% Data completeness (in resolution range)	96.9 (45.21-1.80) 96.9 (45.21-1.80)	Depositor EDS
R_{merge}	0.07	Depositor
R_{sym}	(Not available)	Depositor
$\langle I/\sigma(I) \rangle$ ¹	1.93 (at 1.79Å)	Xtriage
Refinement program	PHENIX (phenix.refine: 1.8.1_1168)	Depositor
R, R_{free}	0.177 , 0.197 0.179 , 0.198	Depositor DCC
R_{free} test set	5289 reflections (5.02%)	wwPDB-VP
Wilson B-factor (Å ²)	26.3	Xtriage
Anisotropy	0.198	Xtriage
Bulk solvent k_{sol} (e/Å ³), B_{sol} (Å ²)	0.36 , 53.1	EDS
L-test for twinning ²	$\langle L \rangle = 0.47$, $\langle L^2 \rangle = 0.30$	Xtriage
Estimated twinning fraction	No twinning to report.	Xtriage
F_o, F_c correlation	0.96	EDS
Total number of atoms	6569	wwPDB-VP
Average B, all atoms (Å ²)	48.0	wwPDB-VP

Xtriage's analysis on translational NCS is as follows: *The largest off-origin peak in the Patterson function is 3.91% of the height of the origin peak. No significant pseudotranslation is detected.*

¹Intensities estimated from amplitudes.

²Theoretical values of $\langle |L| \rangle$, $\langle L^2 \rangle$ for acentric reflections are 0.5, 0.333 respectively for untwinned datasets, and 0.375, 0.2 for perfectly twinned datasets.

5 Model quality [i](#)

5.1 Standard geometry [i](#)

Bond lengths and bond angles in the following residue types are not validated in this section: ZN, EPE

The Z score for a bond length (or angle) is the number of standard deviations the observed value is removed from the expected value. A bond length (or angle) with $|Z| > 5$ is considered an outlier worth inspection. RMSZ is the root-mean-square of all Z scores of the bond lengths (or angles).

Mol	Chain	Bond lengths		Bond angles	
		RMSZ	$\# Z > 5$	RMSZ	$\# Z > 5$
1	A	0.35	0/1992	0.52	0/2697
2	B	0.36	0/838	0.53	0/1132
2	C	0.39	0/845	0.55	0/1143
2	D	0.46	0/835	0.58	0/1129
2	E	0.42	0/837	0.55	0/1132
2	F	0.36	0/822	0.50	0/1111
All	All	0.38	0/6169	0.54	0/8344

There are no bond length outliers.

There are no bond angle outliers.

There are no chirality outliers.

There are no planarity outliers.

5.2 Too-close contacts [i](#)

In the following table, the Non-H and H(model) columns list the number of non-hydrogen atoms and hydrogen atoms in the chain respectively. The H(added) column lists the number of hydrogen atoms added and optimized by MolProbity. The Clashes column lists the number of clashes within the asymmetric unit, whereas Symm-Clashes lists symmetry related clashes.

Mol	Chain	Non-H	H(model)	H(added)	Clashes	Symm-Clashes
1	A	1952	0	1902	27	0
2	B	825	0	831	0	0
2	C	826	0	827	2	0
2	D	822	0	824	8	0
2	E	824	0	828	3	0
2	F	809	0	811	2	0
3	A	1	0	0	0	0

Continued on next page...

Continued from previous page...

Mol	Chain	Non-H	H(model)	H(added)	Clashes	Symm-Clashes
4	B	15	0	17	1	0
4	C	15	0	17	1	0
4	D	15	0	17	1	0
4	E	15	0	17	1	0
4	F	15	0	17	0	0
5	A	64	0	0	1	0
5	B	56	0	0	0	0
5	C	88	0	0	0	0
5	D	90	0	0	2	0
5	E	81	0	0	0	0
5	F	56	0	0	1	0
All	All	6569	0	6108	43	0

The all-atom clashscore is defined as the number of clashes found per 1000 atoms (including hydrogen atoms). The all-atom clashscore for this structure is 4.

All (43) close contacts within the same asymmetric unit are listed below, sorted by their clash magnitude.

Atom-1	Atom-2	Interatomic distance (Å)	Clash overlap (Å)
1:A:177:ILE:O	1:A:181:ILE:HG12	1.97	0.64
1:A:66:ILE:HA	1:A:72:ARG:HA	1.82	0.60
1:A:277:ALA:O	5:A:453:HOH:O	2.16	0.59
1:A:52:ILE:HB	1:A:97:VAL:HG12	1.85	0.56
1:A:234:LEU:HD12	1:A:238:VAL:HG22	1.91	0.52
1:A:78:ASN:N	1:A:78:ASN:OD1	2.29	0.52
1:A:174:ARG:HB3	1:A:178:LYS:HE3	1.91	0.52
1:A:64:ASN:N	1:A:143:ASN:OD1	2.43	0.51
2:D:8:LEU:HD21	2:E:35:ARG:HB3	1.92	0.50
1:A:63:ILE:HD11	1:A:173:LEU:HD13	1.94	0.50
1:A:167:GLU:HA	1:A:170:LYS:HD2	1.92	0.49
1:A:89:GLU:OE1	1:A:178:LYS:NZ	2.43	0.49
2:F:94:ASN:ND2	5:F:329:HOH:O	2.45	0.49
2:F:20:LEU:O	2:F:22:LYS:HG3	2.12	0.48
2:D:20:LEU:O	2:D:22:LYS:HG3	2.14	0.48
1:A:171:LEU:HD13	1:A:240:GLU:HG2	1.95	0.48
1:A:152:LYS:HD2	1:A:152:LYS:HA	1.42	0.46
1:A:82:TYR:HB3	1:A:177:ILE:HD12	1.97	0.46
1:A:21:ALA:N	2:C:81:LYS:HZ2	2.13	0.46
1:A:61:ILE:HG23	1:A:139:ILE:HD12	1.97	0.46
1:A:166:GLU:O	1:A:170:LYS:HG3	2.17	0.45
4:D:201:EPE:H31	4:D:201:EPE:H81	1.78	0.45

Continued on next page...

Continued from previous page...

Atom-1	Atom-2	Interatomic distance (Å)	Clash overlap (Å)
4:C:201:EPE:H62	5:D:369:HOH:O	2.16	0.45
4:B:201:EPE:H31	4:B:201:EPE:H82	1.74	0.44
1:A:54:TYR:CE2	1:A:99:GLN:HG3	2.53	0.44
2:E:20:LEU:O	2:E:22:LYS:HG3	2.17	0.44
1:A:80:SER:O	1:A:84:ARG:HB2	2.18	0.44
2:D:104:LEU:HD23	2:D:104:LEU:HA	1.70	0.43
1:A:138:ASP:O	1:A:142:PHE:HD1	2.01	0.43
2:C:26[B]:THR:OG1	2:C:41:SER:OG	2.24	0.43
2:D:1:THR:HA	2:D:2:PRO:HD3	1.88	0.43
1:A:126:ILE:HD12	1:A:134:ARG:HE	1.84	0.42
2:D:2:PRO:HB3	2:D:7:ASP:CB	2.49	0.42
1:A:216:SER:O	1:A:219:LEU:HG	2.19	0.42
2:D:63:ARG:HB3	2:D:64:PRO:HD3	2.02	0.42
4:E:201:EPE:H31	4:E:201:EPE:H81	1.88	0.41
1:A:23:ARG:NH2	2:D:77:PHE:O	2.54	0.41
1:A:141:SER:O	1:A:145:ILE:HG12	2.21	0.41
1:A:86:ALA:O	1:A:89:GLU:HB2	2.20	0.40
1:A:142:PHE:CZ	1:A:173:LEU:HD12	2.56	0.40
1:A:176:THR:O	1:A:180:GLU:HG2	2.21	0.40
2:E:1:THR:HA	2:E:2:PRO:HD3	1.96	0.40
2:D:90:ASN:HB3	5:D:341:HOH:O	2.21	0.40

There are no symmetry-related clashes.

5.3 Torsion angles ⓘ

5.3.1 Protein backbone ⓘ

In the following table, the Percentiles column shows the percent Ramachandran outliers of the chain as a percentile score with respect to all X-ray entries followed by that with respect to entries of similar resolution.

The Analysed column shows the number of residues for which the backbone conformation was analysed, and the total number of residues.

Mol	Chain	Analysed	Favoured	Allowed	Outliers	Percentiles	
1	A	244/266 (92%)	237 (97%)	7 (3%)	0	100	100
2	B	103/112 (92%)	103 (100%)	0	0	100	100
2	C	105/112 (94%)	105 (100%)	0	0	100	100
2	D	103/112 (92%)	103 (100%)	0	0	100	100

Continued on next page...

Continued from previous page...

Mol	Chain	Analysed	Favoured	Allowed	Outliers	Percentiles	
2	E	103/112 (92%)	103 (100%)	0	0	100	100
2	F	101/112 (90%)	101 (100%)	0	0	100	100
All	All	759/826 (92%)	752 (99%)	7 (1%)	0	100	100

There are no Ramachandran outliers to report.

5.3.2 Protein sidechains ⓘ

In the following table, the Percentiles column shows the percent sidechain outliers of the chain as a percentile score with respect to all X-ray entries followed by that with respect to entries of similar resolution.

The Analysed column shows the number of residues for which the sidechain conformation was analysed, and the total number of residues.

Mol	Chain	Analysed	Rotameric	Outliers	Percentiles	
1	A	214/228 (94%)	210 (98%)	4 (2%)	57	46
2	B	93/100 (93%)	93 (100%)	0	100	100
2	C	93/100 (93%)	93 (100%)	0	100	100
2	D	92/100 (92%)	92 (100%)	0	100	100
2	E	93/100 (93%)	92 (99%)	1 (1%)	73	68
2	F	91/100 (91%)	90 (99%)	1 (1%)	73	68
All	All	676/728 (93%)	670 (99%)	6 (1%)	78	75

All (6) residues with a non-rotameric sidechain are listed below:

Mol	Chain	Res	Type
1	A	34	TYR
1	A	78	ASN
1	A	87	PHE
1	A	154	LYS
2	E	104	LEU
2	F	103	ASN

Some sidechains can be flipped to improve hydrogen bonding and reduce clashes. There are no such sidechains identified.

5.3.3 RNA ⓘ

There are no RNA molecules in this entry.

5.4 Non-standard residues in protein, DNA, RNA chains ⓘ

There are no non-standard protein/DNA/RNA residues in this entry.

5.5 Carbohydrates ⓘ

There are no carbohydrates in this entry.

5.6 Ligand geometry ⓘ

Of 6 ligands modelled in this entry, 1 is monoatomic - leaving 5 for Mogul analysis.

In the following table, the Counts columns list the number of bonds (or angles) for which Mogul statistics could be retrieved, the number of bonds (or angles) that are observed in the model and the number of bonds (or angles) that are defined in the Chemical Component Dictionary. The Link column lists molecule types, if any, to which the group is linked. The Z score for a bond length (or angle) is the number of standard deviations the observed value is removed from the expected value. A bond length (or angle) with $|Z| > 2$ is considered an outlier worth inspection. RMSZ is the root-mean-square of all Z scores of the bond lengths (or angles).

Mol	Type	Chain	Res	Link	Bond lengths			Bond angles		
					Counts	RMSZ	# Z > 2	Counts	RMSZ	# Z > 2
4	EPE	F	201	-	15,15,15	0.83	1 (6%)	18,20,20	1.77	5 (27%)
4	EPE	D	201	-	15,15,15	0.83	1 (6%)	18,20,20	1.66	4 (22%)
4	EPE	E	201	-	15,15,15	0.85	1 (6%)	18,20,20	1.71	5 (27%)
4	EPE	B	201	-	15,15,15	0.83	1 (6%)	18,20,20	1.69	4 (22%)
4	EPE	C	201	-	15,15,15	0.86	1 (6%)	18,20,20	1.98	5 (27%)

In the following table, the Chirals column lists the number of chiral outliers, the number of chiral centers analysed, the number of these observed in the model and the number defined in the Chemical Component Dictionary. Similar counts are reported in the Torsion and Rings columns. '-' means no outliers of that kind were identified.

Mol	Type	Chain	Res	Link	Chirals	Torsions	Rings
4	EPE	F	201	-	-	6/9/19/19	0/1/1/1
4	EPE	D	201	-	-	7/9/19/19	0/1/1/1
4	EPE	E	201	-	-	6/9/19/19	0/1/1/1

Continued on next page...

Continued from previous page...

Mol	Type	Chain	Res	Link	Chirals	Torsions	Rings
4	EPE	B	201	-	-	7/9/19/19	0/1/1/1
4	EPE	C	201	-	-	4/9/19/19	0/1/1/1

All (5) bond length outliers are listed below:

Mol	Chain	Res	Type	Atoms	Z	Observed(Å)	Ideal(Å)
4	C	201	EPE	C10-S	2.93	1.81	1.77
4	E	201	EPE	C10-S	2.92	1.81	1.77
4	D	201	EPE	C10-S	2.81	1.81	1.77
4	F	201	EPE	C10-S	2.80	1.81	1.77
4	B	201	EPE	C10-S	2.79	1.81	1.77

All (23) bond angle outliers are listed below:

Mol	Chain	Res	Type	Atoms	Z	Observed(°)	Ideal(°)
4	C	201	EPE	C5-N4-C3	5.29	120.73	108.83
4	F	201	EPE	C5-N4-C3	4.80	119.64	108.83
4	B	201	EPE	C5-N4-C3	4.25	118.40	108.83
4	E	201	EPE	C5-N4-C3	4.23	118.36	108.83
4	D	201	EPE	C5-N4-C3	4.06	117.96	108.83
4	B	201	EPE	O3S-S-C10	3.04	110.69	105.77
4	F	201	EPE	C7-N4-C3	2.89	118.61	111.23
4	C	201	EPE	O3S-S-C10	2.83	110.34	105.77
4	B	201	EPE	C7-N4-C3	2.81	118.42	111.23
4	E	201	EPE	C7-N4-C3	2.79	118.38	111.23
4	C	201	EPE	C7-N4-C3	2.71	118.15	111.23
4	D	201	EPE	C7-N4-C3	2.70	118.13	111.23
4	E	201	EPE	O3S-S-C10	2.67	110.09	105.77
4	D	201	EPE	O3S-S-C10	2.62	110.01	105.77
4	C	201	EPE	C9-N1-C6	-2.61	104.56	111.23
4	E	201	EPE	C7-N4-C5	2.39	117.34	111.23
4	F	201	EPE	O3S-S-C10	2.38	109.61	105.77
4	D	201	EPE	C7-N4-C5	2.36	117.26	111.23
4	E	201	EPE	O2S-S-C10	2.35	109.75	106.92
4	C	201	EPE	C7-N4-C5	2.29	117.10	111.23
4	B	201	EPE	C7-N4-C5	2.19	116.84	111.23
4	F	201	EPE	C7-N4-C5	2.16	116.76	111.23
4	F	201	EPE	O2S-S-C10	2.02	109.34	106.92

There are no chirality outliers.

All (30) torsion outliers are listed below:

Mol	Chain	Res	Type	Atoms
4	F	201	EPE	C9-C10-S-O1S
4	F	201	EPE	C9-C10-S-O2S
4	B	201	EPE	C10-C9-N1-C6
4	B	201	EPE	C8-C7-N4-C3
4	B	201	EPE	C9-C10-S-O1S
4	B	201	EPE	C9-C10-S-O2S
4	B	201	EPE	C9-C10-S-O3S
4	C	201	EPE	C10-C9-N1-C2
4	C	201	EPE	C8-C7-N4-C5
4	E	201	EPE	C8-C7-N4-C3
4	D	201	EPE	C8-C7-N4-C3
4	F	201	EPE	C9-C10-S-O3S
4	C	201	EPE	N4-C7-C8-O8
4	B	201	EPE	N4-C7-C8-O8
4	E	201	EPE	C10-C9-N1-C2
4	E	201	EPE	C10-C9-N1-C6
4	F	201	EPE	C10-C9-N1-C2
4	F	201	EPE	C10-C9-N1-C6
4	D	201	EPE	C10-C9-N1-C6
4	B	201	EPE	C10-C9-N1-C2
4	C	201	EPE	C10-C9-N1-C6
4	E	201	EPE	C9-C10-S-O3S
4	D	201	EPE	C9-C10-S-O3S
4	F	201	EPE	C8-C7-N4-C5
4	E	201	EPE	C9-C10-S-O1S
4	E	201	EPE	C9-C10-S-O2S
4	D	201	EPE	C9-C10-S-O1S
4	D	201	EPE	C9-C10-S-O2S
4	D	201	EPE	N4-C7-C8-O8
4	D	201	EPE	C10-C9-N1-C2

There are no ring outliers.

4 monomers are involved in 4 short contacts:

Mol	Chain	Res	Type	Clashes	Symm-Clashes
4	D	201	EPE	1	0
4	E	201	EPE	1	0
4	B	201	EPE	1	0
4	C	201	EPE	1	0

5.7 Other polymers [i](#)

There are no such residues in this entry.

5.8 Polymer linkage issues [i](#)

There are no chain breaks in this entry.

6 Fit of model and data ⓘ

6.1 Protein, DNA and RNA chains ⓘ

In the following table, the column labelled ‘#RSRZ> 2’ contains the number (and percentage) of RSRZ outliers, followed by percent RSRZ outliers for the chain as percentile scores relative to all X-ray entries and entries of similar resolution. The OWAB column contains the minimum, median, 95th percentile and maximum values of the occupancy-weighted average B-factor per residue. The column labelled ‘Q< 0.9’ lists the number of (and percentage) of residues with an average occupancy less than 0.9.

Mol	Chain	Analysed	<RSRZ>	#RSRZ>2	OWAB(Å ²)	Q<0.9
1	A	249/266 (93%)	1.74	91 (36%) 0 0	29, 71, 127, 153	0
2	B	105/112 (93%)	-0.07	2 (1%) 66 63	24, 42, 59, 98	0
2	C	105/112 (93%)	-0.11	2 (1%) 66 63	20, 28, 47, 84	0
2	D	105/112 (93%)	0.11	4 (3%) 40 35	17, 25, 50, 97	0
2	E	104/112 (92%)	-0.09	3 (2%) 51 46	21, 29, 52, 95	0
2	F	103/112 (91%)	-0.19	0 100 100	25, 41, 61, 95	0
All	All	771/826 (93%)	0.51	102 (13%) 3 2	17, 40, 109, 153	0

All (102) RSRZ outliers are listed below:

Mol	Chain	Res	Type	RSRZ
1	A	66	ILE	9.9
1	A	150	PHE	9.8
1	A	155	SER	8.9
1	A	77	ILE	8.7
1	A	61	ILE	8.5
1	A	63	ILE	8.1
1	A	165	PRO	7.9
1	A	65	THR	7.3
1	A	79	TYR	7.2
1	A	159	ILE	7.0
1	A	154	LYS	6.9
1	A	169	ILE	6.8
1	A	153	LEU	6.7
1	A	168	TYR	6.5
1	A	156	ARG	6.4
2	D	0	MET	6.4
2	E	104	LEU	6.2
1	A	152	LYS	5.9
1	A	157	GLY	5.6

Continued on next page...

Continued from previous page...

Mol	Chain	Res	Type	RSRZ
1	A	161	ALA	5.6
1	A	58	ASP	5.5
1	A	73	THR	5.4
1	A	75	LEU	5.4
1	A	67	ASN	5.3
1	A	239	THR	5.0
1	A	151	GLU	5.0
1	A	162	ASN	4.7
1	A	163	MET	4.7
1	A	147	MET	4.6
1	A	64	ASN	4.6
1	A	56	VAL	4.5
1	A	74	GLN	4.5
1	A	62	THR	4.5
1	A	237	PRO	4.3
1	A	146	VAL	4.2
1	A	57	PRO	4.2
1	A	144	ARG	4.2
1	A	78	ASN	4.1
1	A	160	PRO	4.0
1	A	51	VAL	4.0
1	A	143	ASN	3.9
1	A	49	GLY	3.9
1	A	102	SER	3.8
1	A	243	ILE	3.8
1	A	171	LEU	3.8
1	A	117	TYR	3.8
1	A	101	SER	3.8
1	A	48	TYR	3.6
1	A	52	ILE	3.6
1	A	137	ILE	3.5
1	A	167	GLU	3.5
1	A	109	VAL	3.5
1	A	60	ASN	3.4
2	C	0	MET	3.3
1	A	82	TYR	3.3
1	A	100	VAL	3.3
1	A	240	GLU	3.3
1	A	145	ILE	3.2
1	A	173	LEU	3.2
1	A	39	GLY	3.1
1	A	84	ARG	3.1

Continued on next page...

Continued from previous page...

Mol	Chain	Res	Type	RSRZ
1	A	81	ASP	3.1
1	A	72	ARG	3.0
1	A	149	ASN	3.0
1	A	116	ASN	3.0
1	A	278	PHE	3.0
1	A	158	ALA	3.0
1	A	164	SER	2.9
1	A	238	VAL	2.9
1	A	112	PHE	2.9
1	A	119	ASP	2.9
1	A	37	HIS	2.9
1	A	96	ARG	2.9
1	A	97	VAL	2.8
1	A	166	GLU	2.8
1	A	50	PRO	2.7
1	A	148	ASN	2.7
1	A	38	ASN	2.6
1	A	118	ALA	2.6
2	E	103	ASN	2.6
1	A	170	LYS	2.6
1	A	54	TYR	2.5
1	A	241	THR	2.5
1	A	136	ARG	2.5
1	A	172	LYS	2.4
1	A	232	HIS	2.4
1	A	99	GLN	2.4
2	D	74	ALA	2.3
2	B	104	LEU	2.3
1	A	47	ILE	2.3
2	B	74	ALA	2.3
1	A	59	GLU	2.2
2	D	104	LEU	2.2
1	A	175	ILE	2.2
2	E	74	ALA	2.2
1	A	277	ALA	2.1
2	D	77	PHE	2.1
1	A	114	THR	2.1
2	C	75	ALA	2.1
1	A	234	LEU	2.1
1	A	130	SER	2.0
1	A	115	THR	2.0

6.2 Non-standard residues in protein, DNA, RNA chains [i](#)

There are no non-standard protein/DNA/RNA residues in this entry.

6.3 Carbohydrates [i](#)

There are no carbohydrates in this entry.

6.4 Ligands [i](#)

In the following table, the Atoms column lists the number of modelled atoms in the group and the number defined in the chemical component dictionary. The B-factors column lists the minimum, median, 95th percentile and maximum values of B factors of atoms in the group. The column labelled 'Q< 0.9' lists the number of atoms with occupancy less than 0.9.

Mol	Type	Chain	Res	Atoms	RSCC	RSR	B-factors(\AA^2)	Q<0.9
4	EPE	D	201	15/15	0.82	0.30	67,72,96,99	0
4	EPE	F	201	15/15	0.83	0.41	83,86,115,116	0
4	EPE	E	201	15/15	0.88	0.33	71,80,93,96	0
4	EPE	B	201	15/15	0.88	0.25	64,73,92,95	0
4	EPE	C	201	15/15	0.89	0.20	61,65,76,76	0
3	ZN	A	301	1/1	0.98	0.06	56,56,56,56	0

6.5 Other polymers [i](#)

There are no such residues in this entry.