



Full wwPDB X-ray Structure Validation Report ⓘ

Jun 6, 2020 – 11:50 pm BST

PDB ID : 3L9X
Title : KefC C-terminal domain in complex with KefF and ESG
Authors : Roosild, T.P.
Deposited on : 2010-01-05
Resolution : 2.10 Å(reported)

This is a Full wwPDB X-ray Structure Validation Report for a publicly released PDB entry.

We welcome your comments at validation@mail.wwpdb.org

A user guide is available at

<https://www.wwpdb.org/validation/2017/XrayValidationReportHelp>

with specific help available everywhere you see the ⓘ symbol.

The following versions of software and data (see [references ⓘ](#)) were used in the production of this report:

MolProbity : 4.02b-467
Mogul : 1.8.5 (274361), CSD as541be (2020)
Xtriage (Phenix) : 1.13
EDS : 2.11
buster-report : 1.1.7 (2018)
Percentile statistics : 20191225.v01 (using entries in the PDB archive December 25th 2019)
Refmac : 5.8.0158
CCP4 : 7.0.044 (Gargrove)
Ideal geometry (proteins) : Engh & Huber (2001)
Ideal geometry (DNA, RNA) : Parkinson et al. (1996)
Validation Pipeline (wwPDB-VP) : 2.11

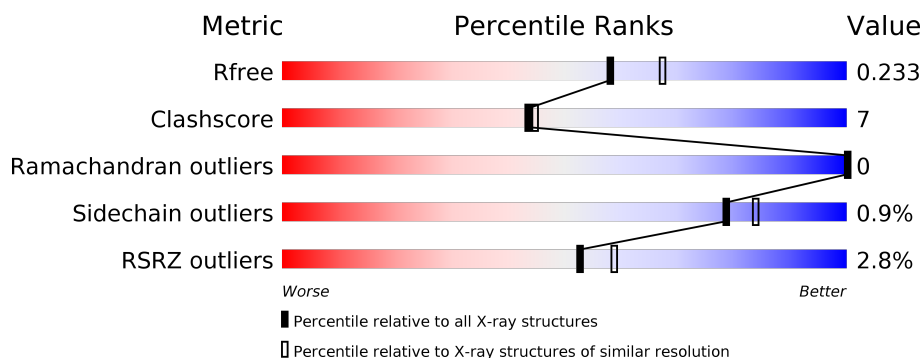
1 Overall quality at a glance

The following experimental techniques were used to determine the structure:

X-RAY DIFFRACTION

The reported resolution of this entry is 2.10 Å.

Percentile scores (ranging between 0-100) for global validation metrics of the entry are shown in the following graphic. The table shows the number of entries on which the scores are based.



Metric	Whole archive (#Entries)	Similar resolution (#Entries, resolution range(Å))
R_{free}	130704	5197 (2.10-2.10)
Clashscore	141614	5710 (2.10-2.10)
Ramachandran outliers	138981	5647 (2.10-2.10)
Sidechain outliers	138945	5648 (2.10-2.10)
RSRZ outliers	127900	5083 (2.10-2.10)

The table below summarises the geometric issues observed across the polymeric chains and their fit to the electron density. The red, orange, yellow and green segments on the lower bar indicate the fraction of residues that contain outliers for ≥ 3 , 2, 1 and 0 types of geometric quality criteria respectively. A grey segment represents the fraction of residues that are not modelled. The numeric value for each fraction is indicated below the corresponding segment, with a dot representing fractions $\leq 5\%$. The upper red bar (where present) indicates the fraction of residues that have poor fit to the electron density. The numeric value is given above the bar.

Mol	Chain	Length	Quality of chain
1	A	413	<div> <div>3%</div> <div> <div></div> <div>69%</div> <div>12%</div> <div>19%</div> </div> </div>
1	B	413	<div> <div>%</div> <div> <div></div> <div>69%</div> <div>12%</div> <div>19%</div> </div> </div>

The following table lists non-polymeric compounds, carbohydrate monomers and non-standard residues in protein, DNA, RNA chains that are outliers for geometric or electron-density-fit criteria:

Mol	Type	Chain	Res	Chirality	Geometry	Clashes	Electron density
5	ESG	B	1177[A]	X	-	-	-
6	L9X	B	1178[B]	X	-	-	-

2 Entry composition

There are 7 unique types of molecules in this entry. The entry contains 5774 atoms, of which 0 are hydrogens and 0 are deuteriums.

In the tables below, the ZeroOcc column contains the number of atoms modelled with zero occupancy, the AltConf column contains the number of residues with at least one atom in alternate conformation and the Trace column contains the number of residues modelled with at most 2 atoms.

- Molecule 1 is a protein called Glutathione-regulated potassium-efflux system protein kefC, linker, ancillary protein kefF.

Mol	Chain	Residues	Atoms					ZeroOcc	AltConf	Trace
1	A	336	Total	C	N	O	S	0	0	0
			2699	1728	478	478	15			
1	B	336	Total	C	N	O	S	0	0	0
			2699	1728	478	478	15			

There are 34 discrepancies between the modelled and reference sequences:

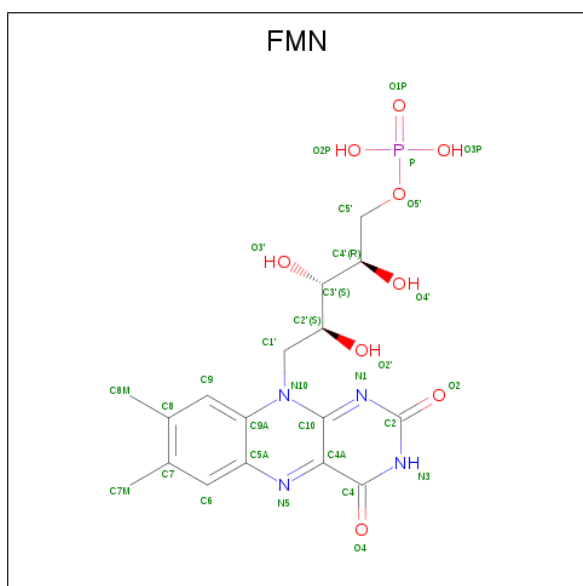
Chain	Residue	Modelled	Actual	Comment	Reference
A	396	GLY	-	EXPRESSION TAG	UNP P03819
A	397	SER	-	EXPRESSION TAG	UNP P03819
A	398	HIS	-	EXPRESSION TAG	UNP P03819
A	399	GLY	-	EXPRESSION TAG	UNP P03819
A	400	MET	-	EXPRESSION TAG	UNP P03819
A	989	THR	-	linker	UNP P03819
A	990	SER	-	linker	UNP P03819
A	991	GLY	-	linker	UNP P03819
A	992	GLY	-	linker	UNP P03819
A	993	LEU	-	linker	UNP P03819
A	994	VAL	-	linker	UNP P03819
A	995	PRO	-	linker	UNP P03819
A	996	ARG	-	linker	UNP P03819
A	997	GLY	-	linker	UNP P03819
A	998	SER	-	linker	UNP P03819
A	999	SER	-	linker	UNP P03819
A	1000	GLY	-	linker	UNP P03819
B	396	GLY	-	EXPRESSION TAG	UNP P03819
B	397	SER	-	EXPRESSION TAG	UNP P03819
B	398	HIS	-	EXPRESSION TAG	UNP P03819
B	399	GLY	-	EXPRESSION TAG	UNP P03819
B	400	MET	-	EXPRESSION TAG	UNP P03819
B	989	THR	-	linker	UNP P03819
B	990	SER	-	linker	UNP P03819

Continued on next page...

Continued from previous page...

Chain	Residue	Modelled	Actual	Comment	Reference
B	991	GLY	-	linker	UNP P03819
B	992	GLY	-	linker	UNP P03819
B	993	LEU	-	linker	UNP P03819
B	994	VAL	-	linker	UNP P03819
B	995	PRO	-	linker	UNP P03819
B	996	ARG	-	linker	UNP P03819
B	997	GLY	-	linker	UNP P03819
B	998	SER	-	linker	UNP P03819
B	999	SER	-	linker	UNP P03819
B	1000	GLY	-	linker	UNP P03819

- Molecule 2 is FLAVIN MONONUCLEOTIDE (three-letter code: FMN) (formula: $C_{17}H_{21}N_4O_9P$).

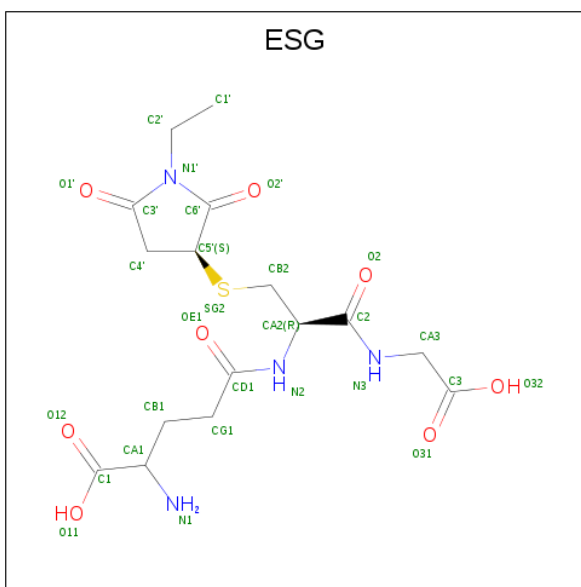


- Molecule 4 is SULFATE ION (three-letter code: SO4) (formula: O₄S).



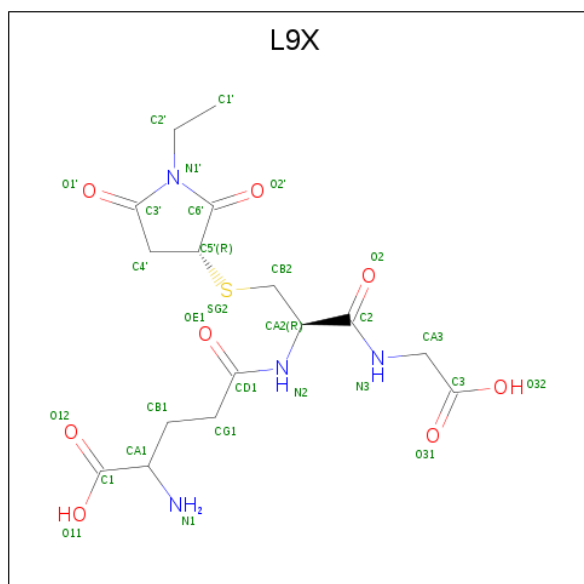
Mol	Chain	Residues	Atoms			ZeroOcc	AltConf
4	A	1	Total	O	S	0	0
			5	4	1		
4	B	1	Total	O	S	0	0
			5	4	1		

- Molecule 5 is L-gamma-glutamyl-S-[(3S)-1-ethyl-2,5-dioxopyrrolidin-3-yl]-L-cysteinylglycine (three-letter code: ESG) (formula: C₁₆H₂₄N₄O₈S).



Mol	Chain	Residues	Atoms					ZeroOcc	AltConf
5	B	1	Total	C	N	O	S	0	1
			29	16	4	8	1		

- Molecule 6 is L-gamma-glutamyl-S-[(3R)-1-ethyl-2,5-dioxopyrrolidin-3-yl]-L-cysteinylglycine (three-letter code: L9X) (formula: C₁₆H₂₄N₄O₈S).



Mol	Chain	Residues	Atoms					ZeroOcc	AltConf
6	B	1	Total	C	N	O	S	0	1
			29	16	4	8	1		

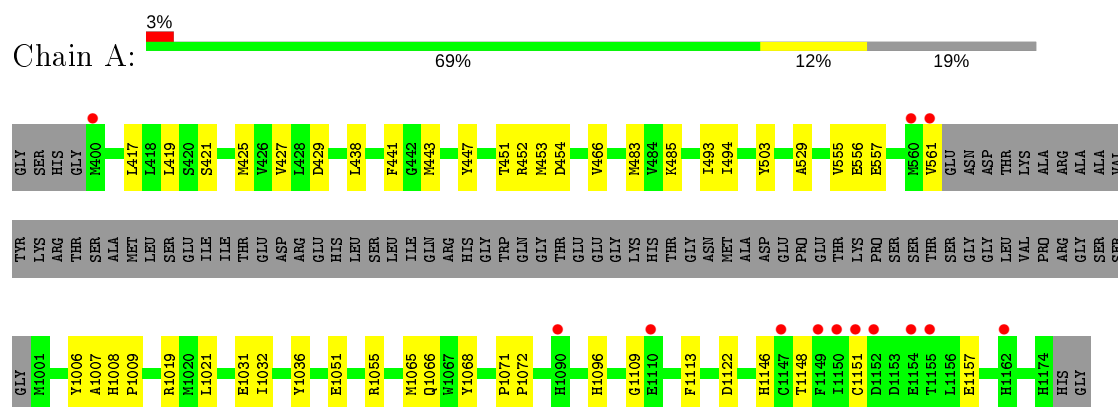
- Molecule 7 is water.

Mol	Chain	Residues	Atoms		ZeroOcc	AltConf
7	A	138	Total	O	0	0
			138	138		
7	B	106	Total	O	0	0
			106	106		

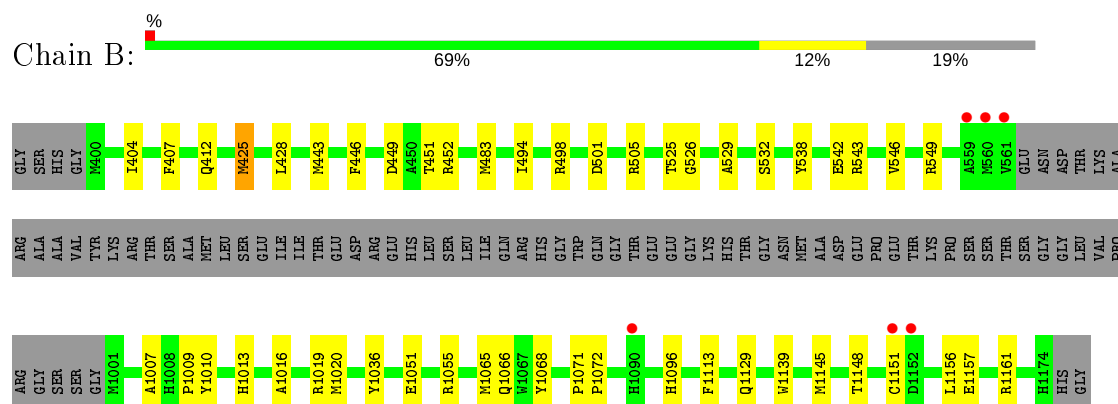
3 Residue-property plots [i](#)

These plots are drawn for all protein, RNA and DNA chains in the entry. The first graphic for a chain summarises the proportions of the various outlier classes displayed in the second graphic. The second graphic shows the sequence view annotated by issues in geometry and electron density. Residues are color-coded according to the number of geometric quality criteria for which they contain at least one outlier: green = 0, yellow = 1, orange = 2 and red = 3 or more. A red dot above a residue indicates a poor fit to the electron density ($RSRZ > 2$). Stretches of 2 or more consecutive residues without any outlier are shown as a green connector. Residues present in the sample, but not in the model, are shown in grey.

- Molecule 1: Glutathione-regulated potassium-efflux system protein kefC, linker, ancillary protein keff



- Molecule 1: Glutathione-regulated potassium-efflux system protein kefC, linker, ancillary protein keff



4 Data and refinement statistics

Property	Value	Source
Space group	P 21 21 21	Depositor
Cell constants a, b, c, α , β , γ	64.95Å 85.94Å 189.41Å 90.00° 90.00° 90.00°	Depositor
Resolution (Å)	38.26 – 2.10 38.26 – 2.10	Depositor EDS
% Data completeness (in resolution range)	98.5 (38.26-2.10) 98.5 (38.26-2.10)	Depositor EDS
R_{merge}	0.09	Depositor
R_{sym}	(Not available)	Depositor
$\langle I/\sigma(I) \rangle$ ¹	2.49 (at 2.10Å)	Xtriage
Refinement program	REFMAC 5.2.0019	Depositor
R, R_{free}	0.203 , 0.236 0.203 , 0.233	Depositor DCC
R_{free} test set	3110 reflections (5.03%)	wwPDB-VP
Wilson B-factor (Å ²)	27.3	Xtriage
Anisotropy	0.512	Xtriage
Bulk solvent k_{sol} (e/Å ³), B_{sol} (Å ²)	0.37 , 41.7	EDS
L-test for twinning ²	$\langle L \rangle = 0.49$, $\langle L^2 \rangle = 0.32$	Xtriage
Estimated twinning fraction	No twinning to report.	Xtriage
F_o, F_c correlation	0.94	EDS
Total number of atoms	5774	wwPDB-VP
Average B, all atoms (Å ²)	29.0	wwPDB-VP

Xtriage's analysis on translational NCS is as follows: *The largest off-origin peak in the Patterson function is 4.52% of the height of the origin peak. No significant pseudotranslation is detected.*

¹Intensities estimated from amplitudes.

²Theoretical values of $\langle |L| \rangle$, $\langle L^2 \rangle$ for acentric reflections are 0.5, 0.333 respectively for untwinned datasets, and 0.375, 0.2 for perfectly twinned datasets.

5 Model quality ⓘ

5.1 Standard geometry ⓘ

Bond lengths and bond angles in the following residue types are not validated in this section: ESG, FMN, ZN, L9X, SO4

The Z score for a bond length (or angle) is the number of standard deviations the observed value is removed from the expected value. A bond length (or angle) with $|Z| > 5$ is considered an outlier worth inspection. RMSZ is the root-mean-square of all Z scores of the bond lengths (or angles).

Mol	Chain	Bond lengths		Bond angles	
		RMSZ	$\# Z > 5$	RMSZ	$\# Z > 5$
1	A	0.77	0/2770	0.72	0/3751
1	B	0.73	0/2770	0.70	0/3751
All	All	0.75	0/5540	0.71	0/7502

There are no bond length outliers.

There are no bond angle outliers.

There are no chirality outliers.

There are no planarity outliers.

5.2 Too-close contacts ⓘ

In the following table, the Non-H and H(model) columns list the number of non-hydrogen atoms and hydrogen atoms in the chain respectively. The H(added) column lists the number of hydrogen atoms added and optimized by MolProbity. The Clashes column lists the number of clashes within the asymmetric unit, whereas Symm-Clashes lists symmetry related clashes.

Mol	Chain	Non-H	H(model)	H(added)	Clashes	Symm-Clashes
1	A	2699	0	2653	40	0
1	B	2699	0	2653	40	0
2	A	31	0	19	1	0
2	B	31	0	19	2	0
3	A	1	0	0	0	0
3	B	1	0	0	0	0
4	A	5	0	0	0	0
4	B	5	0	0	0	0
5	B	29	0	21	0	0
6	B	29	0	21	0	0
7	A	138	0	0	1	0

Continued on next page...

Continued from previous page...

Mol	Chain	Non-H	H(model)	H(added)	Clashes	Symm-Clashes
7	B	106	0	0	1	0
All	All	5774	0	5386	73	0

The all-atom clashscore is defined as the number of clashes found per 1000 atoms (including hydrogen atoms). The all-atom clashscore for this structure is 7.

All (73) close contacts within the same asymmetric unit are listed below, sorted by their clash magnitude.

Atom-1	Atom-2	Interatomic distance (Å)	Clash overlap (Å)
1:A:425:MET:H	1:A:443:MET:HE2	1.33	0.93
1:B:1065:MET:CE	1:B:1113:PHE:HE2	1.96	0.78
1:A:1065:MET:CE	1:A:1113:PHE:HE2	2.02	0.72
1:A:1051:GLU:OE1	1:A:1055:ARG:NH1	2.23	0.71
1:B:1010:TYR:HB3	1:B:1013:HIS:HD2	1.56	0.70
1:A:1148:THR:HA	1:A:1151:CYS:HB2	1.74	0.69
1:B:1051:GLU:OE2	1:B:1055:ARG:HD3	1.95	0.67
1:B:1065:MET:CE	1:B:1068:TYR:HA	2.25	0.66
1:B:1065:MET:HE2	1:B:1113:PHE:CE2	2.30	0.66
1:B:1065:MET:CE	1:B:1113:PHE:CE2	2.79	0.65
1:B:1065:MET:HE1	1:B:1113:PHE:HE2	1.60	0.64
1:B:1065:MET:HE2	1:B:1113:PHE:HE2	1.61	0.64
1:A:1019:ARG:NH1	1:A:1157:GLU:HG2	2.13	0.62
1:A:485:LYS:HE2	1:A:493:ILE:HD12	1.82	0.61
1:A:1065:MET:HE2	1:A:1113:PHE:HE2	1.64	0.60
1:A:1065:MET:HE2	1:A:1113:PHE:CE2	2.36	0.60
1:A:1065:MET:CE	1:A:1068:TYR:HA	2.31	0.59
1:A:1065:MET:CE	1:A:1113:PHE:CE2	2.84	0.58
1:A:451:THR:O	1:A:483:MET:SD	2.61	0.58
1:B:549:ARG:NH2	7:B:204:HOH:O	2.37	0.58
1:A:425:MET:N	1:A:443:MET:HE2	2.12	0.58
1:A:1031:GLU:OE1	1:A:1055:ARG:NH2	2.37	0.57
1:A:1021:LEU:HD22	1:A:1032:ILE:HD13	1.87	0.57
1:A:1065:MET:HE1	1:A:1113:PHE:HE2	1.69	0.56
1:A:421:SER:HB3	1:B:543:ARG:HH11	1.71	0.55
1:A:425:MET:HG2	1:A:443:MET:HG3	1.87	0.55
1:A:452:ARG:HB3	1:A:454:ASP:OD1	2.07	0.55
1:A:503:TYR:CE1	1:A:555:VAL:HG12	2.43	0.53
1:B:1016:ALA:HA	1:B:1156:LEU:HD11	1.89	0.53
1:B:1157:GLU:O	1:B:1161:ARG:HG3	2.10	0.52
1:B:428:LEU:HD23	1:B:446:PHE:HB2	1.92	0.51
1:B:407:PHE:CE1	1:B:412:GLN:HG2	2.47	0.49

Continued on next page...

Continued from previous page...

Atom-1	Atom-2	Interatomic distance (Å)	Clash overlap (Å)
1:A:494:ILE:HG22	1:B:525:THR:HG23	1.94	0.49
1:B:1010:TYR:HB3	1:B:1013:HIS:CD2	2.42	0.49
1:B:1066:GLN:HA	2:B:2400:FMN:C5A	2.43	0.49
1:B:1065:MET:HE1	1:B:1068:TYR:HA	1.95	0.48
1:B:1148:THR:HA	1:B:1151:CYS:HB2	1.95	0.48
1:B:451:THR:HB	1:B:483:MET:HE1	1.96	0.48
1:A:1065:MET:HE3	1:A:1068:TYR:HA	1.96	0.48
1:A:1009:PRO:HA	1:A:1036:TYR:CG	2.49	0.47
1:B:407:PHE:CD1	1:B:412:GLN:HG2	2.49	0.47
1:B:1019:ARG:NH1	1:B:1157:GLU:HG2	2.30	0.47
1:B:1065:MET:HE3	1:B:1068:TYR:HA	1.96	0.46
1:B:1009:PRO:HA	1:B:1036:TYR:CG	2.51	0.46
1:B:538:TYR:O	1:B:542:GLU:HG3	2.16	0.46
1:A:1065:MET:HE1	1:A:1113:PHE:CE2	2.49	0.45
1:B:1065:MET:HE3	2:B:2400:FMN:O4	2.17	0.45
1:B:501:ASP:HB3	1:B:505:ARG:NH1	2.32	0.45
1:A:427:VAL:HG11	1:A:438:LEU:HD21	1.99	0.44
1:A:419:LEU:HD12	1:A:441:PHE:CE1	2.53	0.43
1:A:1006:TYR:CZ	1:A:1008:HIS:HB2	2.53	0.43
1:B:1129:GLN:HG3	1:B:1139:TRP:CG	2.53	0.43
1:A:503:TYR:OH	1:A:556:GLU:OE2	2.26	0.42
1:A:1109:GLY:HA2	1:A:1146:HIS:HB3	2.02	0.42
1:A:1122:ASP:CG	7:A:284:HOH:O	2.57	0.42
1:B:1065:MET:HE1	1:B:1113:PHE:CE2	2.45	0.41
1:A:1007:ALA:O	1:A:1071:PRO:HG2	2.21	0.41
1:B:1007:ALA:O	1:B:1071:PRO:HG2	2.20	0.41
1:B:449:ASP:HB2	1:B:452:ARG:HG3	2.02	0.41
1:A:466:VAL:HG21	1:B:532:SER:OG	2.21	0.41
1:A:417:LEU:HD23	1:B:526:GLY:HA3	2.02	0.41
1:B:542:GLU:O	1:B:546:VAL:HG23	2.21	0.41
1:A:1071:PRO:HA	1:A:1072:PRO:HD3	1.99	0.41
1:A:453:MET:HE2	1:A:453:MET:HA	2.01	0.41
1:A:494:ILE:HD13	1:B:529:ALA:HA	2.03	0.41
1:A:557:GLU:O	1:A:561:VAL:HG23	2.20	0.41
1:A:429:ASP:O	1:A:447:TYR:HA	2.21	0.41
1:A:494:ILE:CD1	1:B:529:ALA:HA	2.50	0.41
1:A:1066:GLN:HA	2:A:2400:FMN:C5A	2.51	0.41
1:B:404:ILE:HD11	1:B:425:MET:SD	2.61	0.40
1:B:1020:MET:SD	1:B:1145:MET:HE3	2.61	0.40
1:A:529:ALA:HA	1:B:494:ILE:CD1	2.50	0.40
1:B:1071:PRO:HA	1:B:1072:PRO:HD3	1.97	0.40

There are no symmetry-related clashes.

5.3 Torsion angles [i](#)

5.3.1 Protein backbone [i](#)

In the following table, the Percentiles column shows the percent Ramachandran outliers of the chain as a percentile score with respect to all X-ray entries followed by that with respect to entries of similar resolution.

The Analysed column shows the number of residues for which the backbone conformation was analysed, and the total number of residues.

Mol	Chain	Analysed	Favoured	Allowed	Outliers	Percentiles	
1	A	332/413 (80%)	326 (98%)	6 (2%)	0	100	100
1	B	332/413 (80%)	329 (99%)	3 (1%)	0	100	100
All	All	664/826 (80%)	655 (99%)	9 (1%)	0	100	100

There are no Ramachandran outliers to report.

5.3.2 Protein sidechains [i](#)

In the following table, the Percentiles column shows the percent sidechain outliers of the chain as a percentile score with respect to all X-ray entries followed by that with respect to entries of similar resolution.

The Analysed column shows the number of residues for which the sidechain conformation was analysed, and the total number of residues.

Mol	Chain	Analysed	Rotameric	Outliers	Percentiles	
1	A	279/340 (82%)	278 (100%)	1 (0%)	91	94
1	B	279/340 (82%)	275 (99%)	4 (1%)	67	73
All	All	558/680 (82%)	553 (99%)	5 (1%)	78	84

All (5) residues with a non-rotameric sidechain are listed below:

Mol	Chain	Res	Type
1	A	1096	HIS
1	B	425	MET
1	B	443	MET
1	B	498	ARG
1	B	1096	HIS

Some sidechains can be flipped to improve hydrogen bonding and reduce clashes. There are no such sidechains identified.

5.3.3 RNA [i](#)

There are no RNA molecules in this entry.

5.4 Non-standard residues in protein, DNA, RNA chains [i](#)

There are no non-standard protein/DNA/RNA residues in this entry.

5.5 Carbohydrates [i](#)

There are no carbohydrates in this entry.

5.6 Ligand geometry [i](#)

Of 8 ligands modelled in this entry, 2 are monoatomic - leaving 6 for Mogul analysis.

In the following table, the Counts columns list the number of bonds (or angles) for which Mogul statistics could be retrieved, the number of bonds (or angles) that are observed in the model and the number of bonds (or angles) that are defined in the Chemical Component Dictionary. The Link column lists molecule types, if any, to which the group is linked. The Z score for a bond length (or angle) is the number of standard deviations the observed value is removed from the expected value. A bond length (or angle) with $|Z| > 2$ is considered an outlier worth inspection. RMSZ is the root-mean-square of all Z scores of the bond lengths (or angles).

Mol	Type	Chain	Res	Link	Bond lengths			Bond angles		
					Counts	RMSZ	# Z > 2	Counts	RMSZ	# Z > 2
6	L9X	B	1178[B]	-	20,29,29	2.93	5 (25%)	23,39,39	2.05	6 (26%)
2	FMN	B	2400	-	31,33,33	1.88	6 (19%)	40,50,50	2.06	6 (15%)
4	SO4	A	1190	-	4,4,4	0.25	0	6,6,6	1.23	0
2	FMN	A	2400	-	31,33,33	1.53	5 (16%)	40,50,50	2.05	10 (25%)
4	SO4	B	1180	-	4,4,4	0.43	0	6,6,6	0.66	0
5	ESG	B	1177[A]	-	20,29,29	2.96	5 (25%)	23,39,39	2.08	6 (26%)

In the following table, the Chirals column lists the number of chiral outliers, the number of chiral centers analysed, the number of these observed in the model and the number defined in the Chemical Component Dictionary. Similar counts are reported in the Torsion and Rings columns. '-' means no outliers of that kind were identified.

Mol	Type	Chain	Res	Link	Chirals	Torsions	Rings
2	FMN	A	2400	-	-	0/18/18/18	0/3/3/3
2	FMN	B	2400	-	-	0/18/18/18	0/3/3/3
6	L9X	B	1178[B]	-	1/1/10/12	2/22/45/45	0/1/1/1
5	ESG	B	1177[A]	-	1/1/10/12	1/22/45/45	0/1/1/1

All (21) bond length outliers are listed below:

Mol	Chain	Res	Type	Atoms	Z	Observed(Å)	Ideal(Å)
6	B	1178[B]	L9X	CA1-N1	-8.70	1.27	1.47
5	B	1177[A]	ESG	CA1-N1	-8.70	1.27	1.47
5	B	1177[A]	ESG	C6'-N1'	-7.78	1.27	1.38
6	B	1178[B]	L9X	C6'-N1'	-7.51	1.28	1.38
2	B	2400	FMN	C10-N1	4.98	1.39	1.33
2	B	2400	FMN	C4A-N5	4.87	1.40	1.33
6	B	1178[B]	L9X	C5'-SG2	-4.57	1.78	1.83
5	B	1177[A]	ESG	C5'-SG2	-4.32	1.78	1.83
2	A	2400	FMN	C4A-N5	4.05	1.39	1.33
2	A	2400	FMN	C1'-N10	3.73	1.52	1.48
2	B	2400	FMN	C1'-N10	3.56	1.51	1.48
2	B	2400	FMN	C4-N3	3.33	1.38	1.33
2	B	2400	FMN	C4A-C10	3.28	1.42	1.38
6	B	1178[B]	L9X	CB2-SG2	-3.27	1.78	1.82
5	B	1177[A]	ESG	CB2-SG2	-3.27	1.78	1.82
2	A	2400	FMN	C10-N1	3.03	1.37	1.33
2	A	2400	FMN	C4-N3	2.84	1.38	1.33
5	B	1177[A]	ESG	C3'-N1'	-2.77	1.34	1.38
6	B	1178[B]	L9X	C3'-N1'	-2.46	1.34	1.38
2	B	2400	FMN	C5A-N5	2.42	1.39	1.35
2	A	2400	FMN	C5A-N5	2.03	1.38	1.35

All (28) bond angle outliers are listed below:

Mol	Chain	Res	Type	Atoms	Z	Observed(°)	Ideal(°)
2	B	2400	FMN	C4-N3-C2	8.58	122.39	115.14
2	A	2400	FMN	C1'-N10-C9A	6.14	123.12	118.29
6	B	1178[B]	L9X	C4'-C3'-N1'	5.83	111.56	108.13
2	A	2400	FMN	C4-N3-C2	5.82	120.06	115.14
5	B	1177[A]	ESG	C6'-N1'-C3'	-5.58	109.73	113.04
2	B	2400	FMN	C1'-N10-C9A	4.99	122.22	118.29
2	B	2400	FMN	C4A-C4-N3	-4.00	117.95	123.43
5	B	1177[A]	ESG	C4'-C3'-N1'	3.89	110.42	108.13
2	A	2400	FMN	C5A-C9A-N10	3.80	120.47	117.72
6	B	1178[B]	L9X	C6'-N1'-C3'	-3.58	110.92	113.04

Continued on next page...

Continued from previous page...

Mol	Chain	Res	Type	Atoms	Z	Observed(°)	Ideal(°)
2	B	2400	FMN	C10-C4A-N5	-3.55	118.80	121.26
6	B	1178[B]	L9X	CB1-CG1-CD1	-3.52	105.19	113.04
5	B	1177[A]	ESG	CB1-CG1-CD1	-3.52	105.19	113.04
6	B	1178[B]	L9X	O1'-C3'-C4'	-3.51	122.13	127.24
2	A	2400	FMN	C4A-N5-C5A	3.48	120.24	116.77
2	B	2400	FMN	C4A-N5-C5A	3.42	120.19	116.77
5	B	1177[A]	ESG	O1'-C3'-C4'	-3.29	122.45	127.24
2	A	2400	FMN	C4-C4A-N5	3.12	122.17	118.60
2	A	2400	FMN	C10-C4A-N5	-3.06	119.14	121.26
5	B	1177[A]	ESG	O1'-C3'-N1'	2.87	127.10	123.92
2	B	2400	FMN	C4-C4A-N5	2.81	121.81	118.60
2	A	2400	FMN	C9A-N10-C10	-2.54	118.58	121.91
2	A	2400	FMN	C8M-C8-C9	-2.41	114.58	120.34
2	A	2400	FMN	C4A-C4-N3	-2.32	120.26	123.43
6	B	1178[B]	L9X	O1'-C3'-N1'	2.13	126.28	123.92
6	B	1178[B]	L9X	C3-CA3-N3	-2.08	106.41	110.43
5	B	1177[A]	ESG	C3-CA3-N3	-2.08	106.41	110.43
2	A	2400	FMN	C8M-C8-C7	2.08	125.00	120.74

All (2) chirality outliers are listed below:

Mol	Chain	Res	Type	Atom
6	B	1178[B]	L9X	CA1
5	B	1177[A]	ESG	CA1

All (3) torsion outliers are listed below:

Mol	Chain	Res	Type	Atoms
6	B	1178[B]	L9X	C4'-C5'-SG2-CB2
6	B	1178[B]	L9X	N1-CA1-CB1-CG1
5	B	1177[A]	ESG	N1-CA1-CB1-CG1

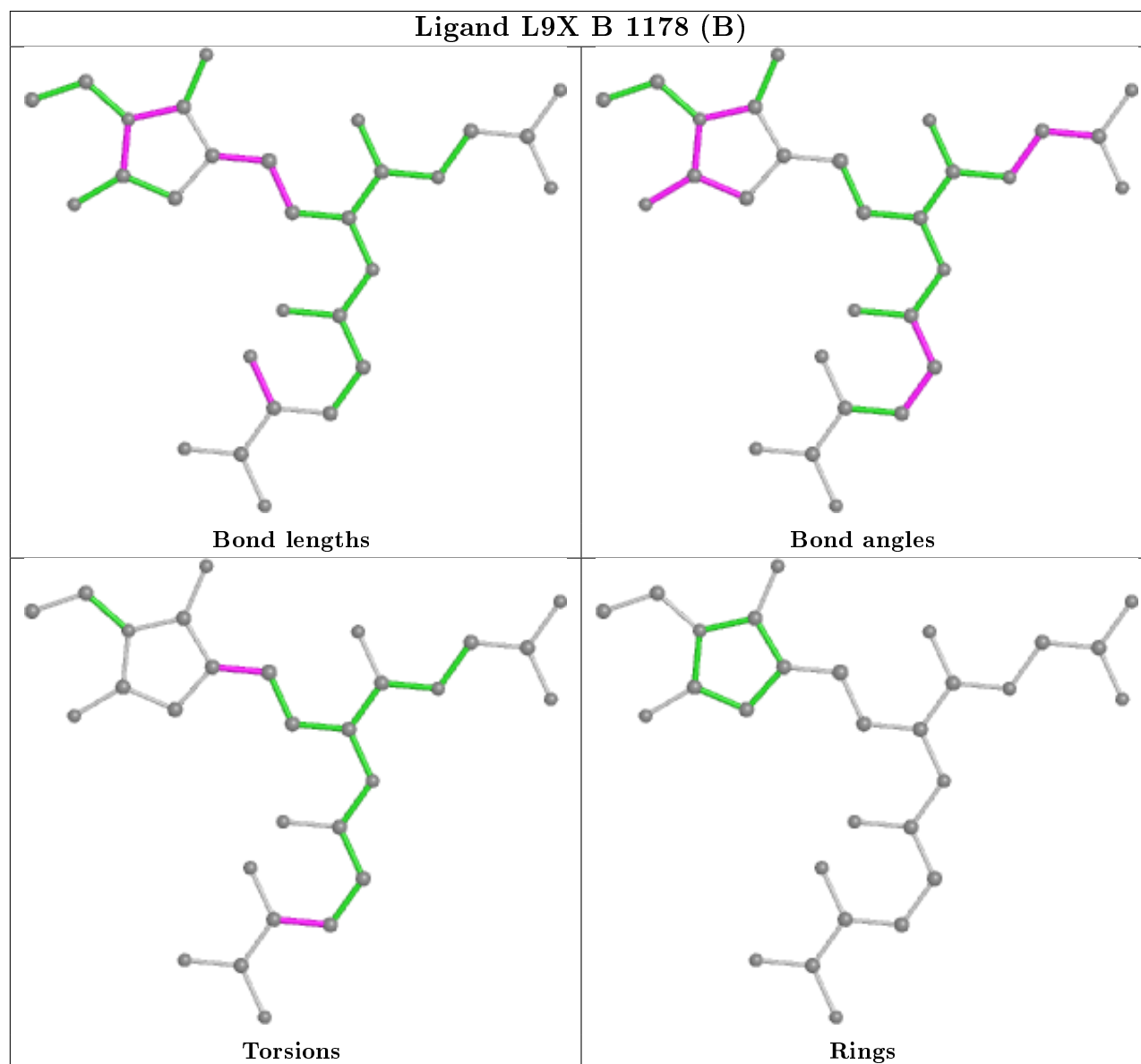
There are no ring outliers.

2 monomers are involved in 3 short contacts:

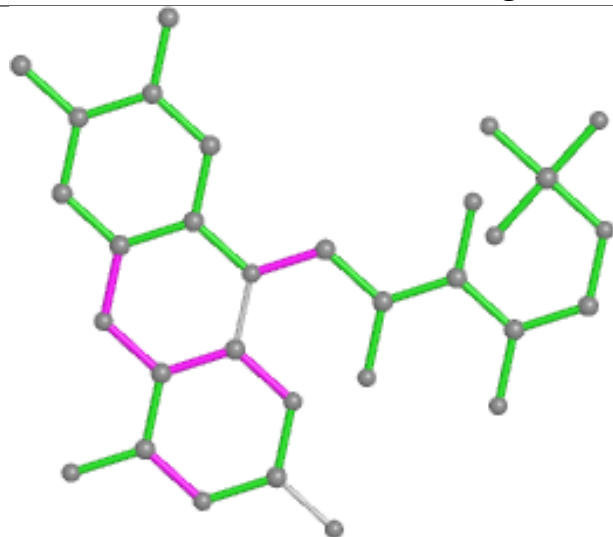
Mol	Chain	Res	Type	Clashes	Symm-Clashes
2	B	2400	FMN	2	0
2	A	2400	FMN	1	0

The following is a two-dimensional graphical depiction of Mogul quality analysis of bond lengths, bond angles, torsion angles, and ring geometry for all instances of the Ligand of Interest. In addition, ligands with molecular weight > 250 and outliers as shown on the validation Tables will

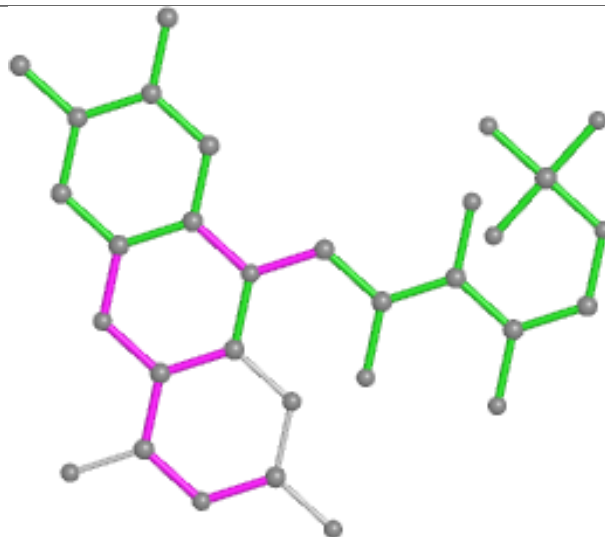
also be included. For torsion angles, if less than 5% of the Mogul distribution of torsion angles is within 10 degrees of the torsion angle in question, then that torsion angle is considered an outlier. Any bond that is central to one or more torsion angles identified as an outlier by Mogul will be highlighted in the graph. For rings, the root-mean-square deviation (RMSD) between the ring in question and similar rings identified by Mogul is calculated over all ring torsion angles. If the average RMSD is greater than 60 degrees and the minimal RMSD between the ring in question and any Mogul-identified rings is also greater than 60 degrees, then that ring is considered an outlier. The outliers are highlighted in purple. The color gray indicates Mogul did not find sufficient equivalents in the CSD to analyse the geometry.



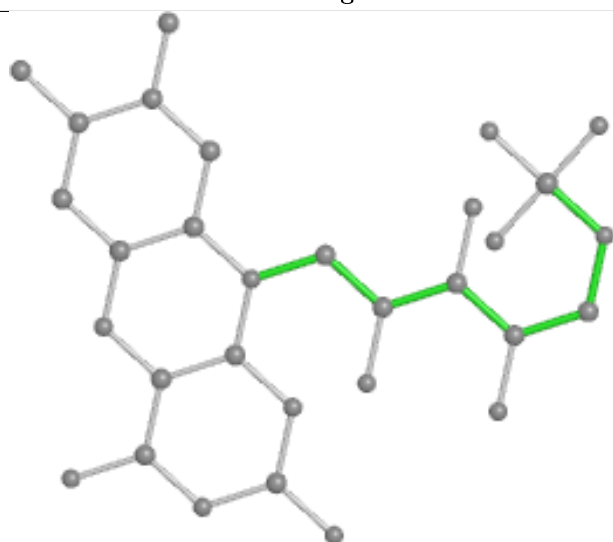
Ligand FMN B 2400



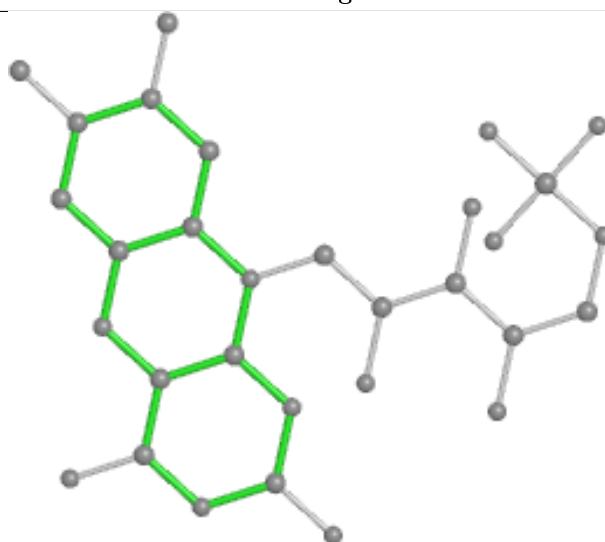
Bond lengths



Bond angles

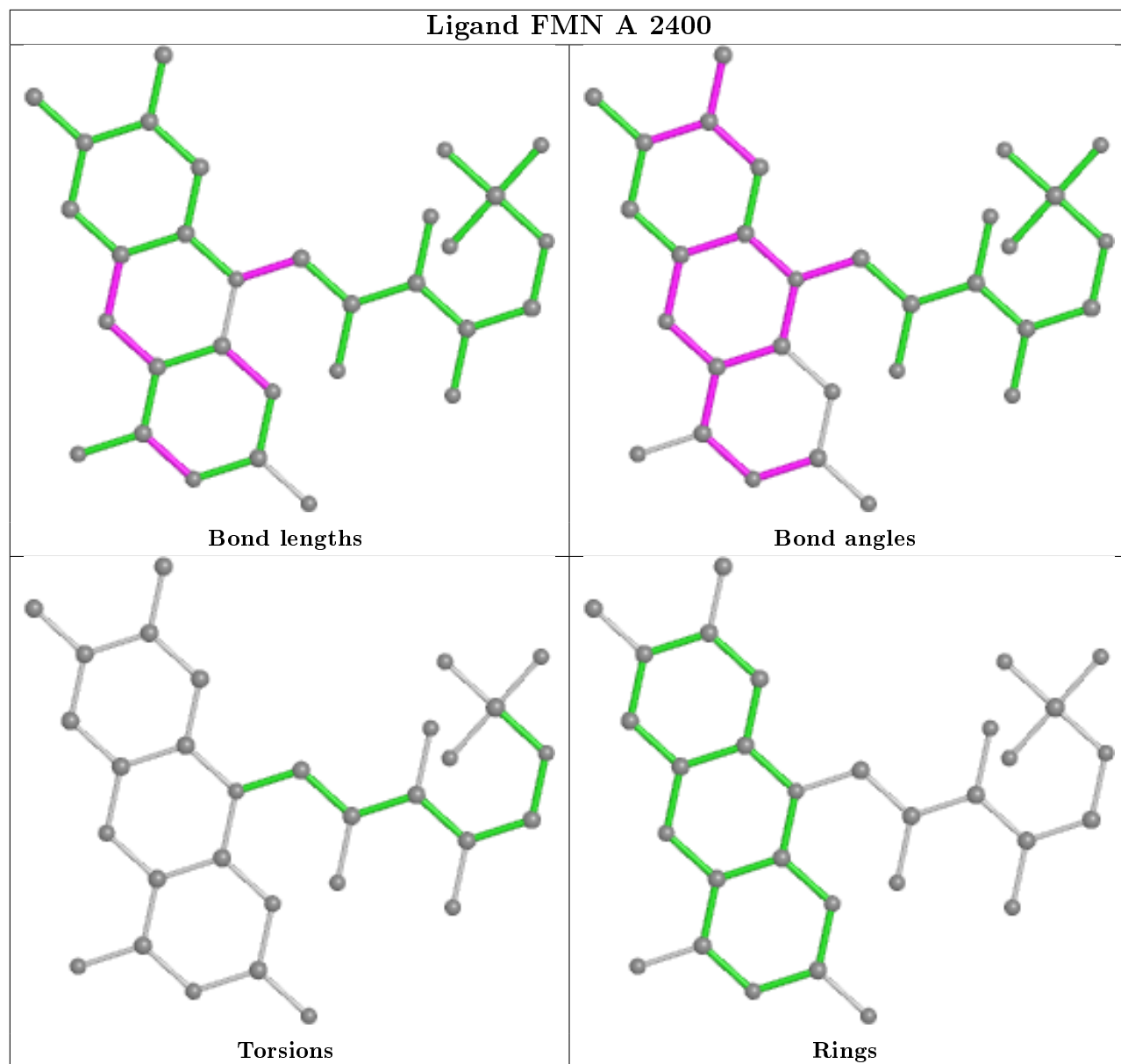


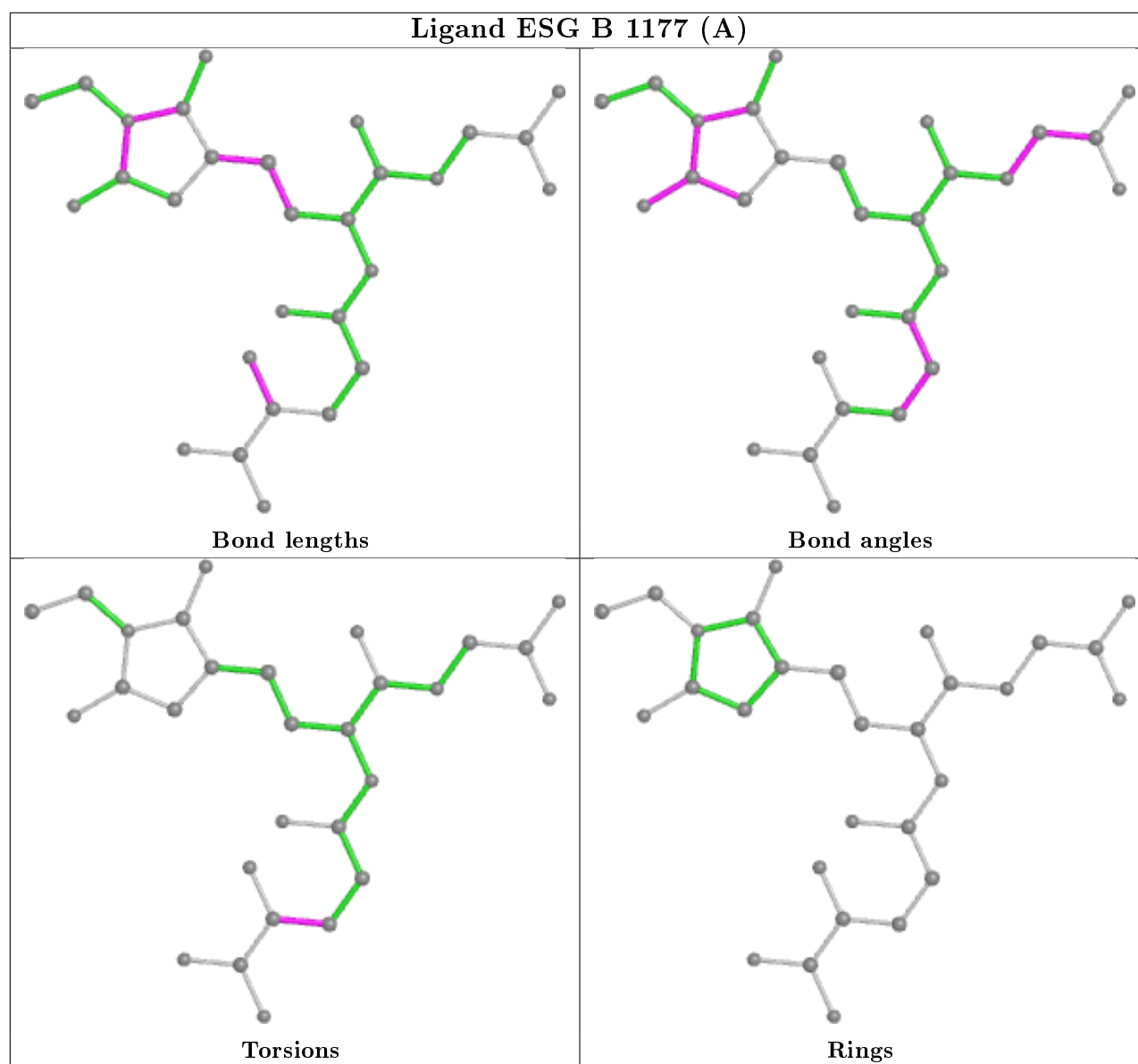
Torsions



Rings

Ligand FMN A 2400





5.7 Other polymers [i](#)

There are no such residues in this entry.

5.8 Polymer linkage issues [i](#)

There are no chain breaks in this entry.

6 Fit of model and data [i](#)

6.1 Protein, DNA and RNA chains [i](#)

In the following table, the column labelled ‘#RSRZ> 2’ contains the number (and percentage) of RSRZ outliers, followed by percent RSRZ outliers for the chain as percentile scores relative to all X-ray entries and entries of similar resolution. The OWAB column contains the minimum, median, 95th percentile and maximum values of the occupancy-weighted average B-factor per residue. The column labelled ‘Q< 0.9’ lists the number of (and percentage) of residues with an average occupancy less than 0.9.

Mol	Chain	Analysed	<RSRZ>	#RSRZ>2	OWAB(Å ²)	Q<0.9
1	A	336/413 (81%)	-0.10	13 (3%) 39 45	16, 27, 49, 69	0
1	B	336/413 (81%)	-0.28	6 (1%) 68 72	16, 27, 47, 66	0
All	All	672/826 (81%)	-0.19	19 (2%) 53 59	16, 27, 49, 69	0

All (19) RSRZ outliers are listed below:

Mol	Chain	Res	Type	RSRZ
1	A	1152	ASP	7.7
1	A	1149	PHE	7.3
1	A	1150	ILE	5.7
1	A	1151	CYS	4.4
1	A	1147	CYS	3.6
1	B	560	MET	3.4
1	B	1151	CYS	3.4
1	B	1152	ASP	3.2
1	A	1155	THR	3.1
1	A	400	MET	3.1
1	A	1090	HIS	2.8
1	A	1154	GLU	2.7
1	B	559	ALA	2.7
1	B	1090	HIS	2.5
1	A	1110	GLU	2.5
1	A	1162	HIS	2.4
1	A	560	MET	2.2
1	B	561	VAL	2.1
1	A	561	VAL	2.0

6.2 Non-standard residues in protein, DNA, RNA chains [i](#)

There are no non-standard protein/DNA/RNA residues in this entry.

6.3 Carbohydrates

There are no carbohydrates in this entry.

6.4 Ligands

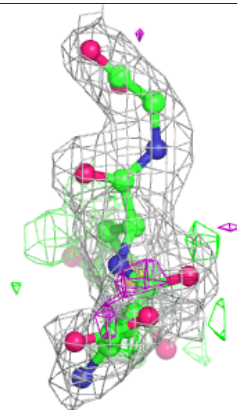
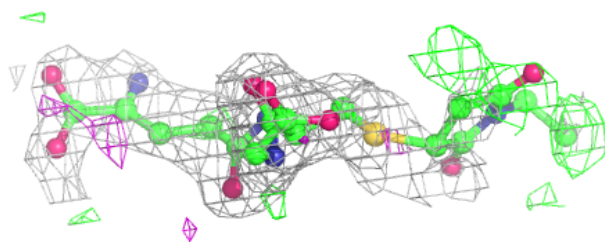
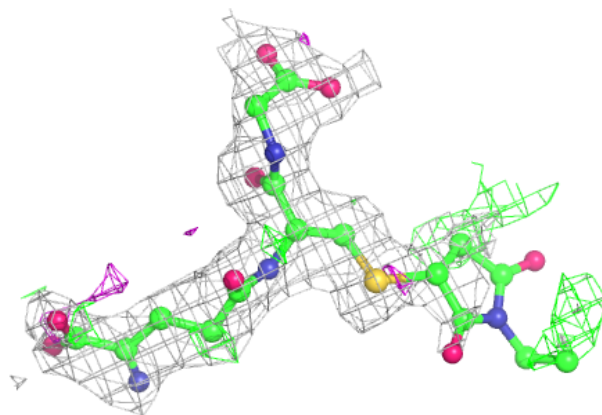
In the following table, the Atoms column lists the number of modelled atoms in the group and the number defined in the chemical component dictionary. The B-factors column lists the minimum, median, 95th percentile and maximum values of B factors of atoms in the group. The column labelled 'Q< 0.9' lists the number of atoms with occupancy less than 0.9.

Mol	Type	Chain	Res	Atoms	RSCC	RSR	B-factors(\AA^2)	Q<0.9
6	L9X	B	1178[B]	29/29	0.85	0.18	35,49,61,61	29
5	ESG	B	1177[A]	29/29	0.87	0.15	35,49,57,58	29
2	FMN	B	2400	31/31	0.96	0.11	24,31,34,35	0
2	FMN	A	2400	31/31	0.97	0.08	22,31,32,34	0
3	ZN	A	2402	1/1	0.99	0.12	47,47,47,47	0
3	ZN	B	2402	1/1	0.99	0.13	43,43,43,43	0
4	SO4	B	1180	5/5	0.99	0.08	20,23,25,26	0
4	SO4	A	1190	5/5	0.99	0.10	20,20,23,23	0

The following is a graphical depiction of the model fit to experimental electron density of all instances of the Ligand of Interest. In addition, ligands with molecular weight > 250 and outliers as shown on the geometry validation Tables will also be included. Each fit is shown from different orientation to approximate a three-dimensional view.

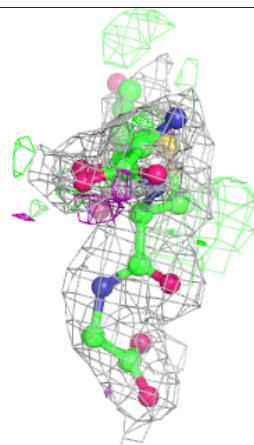
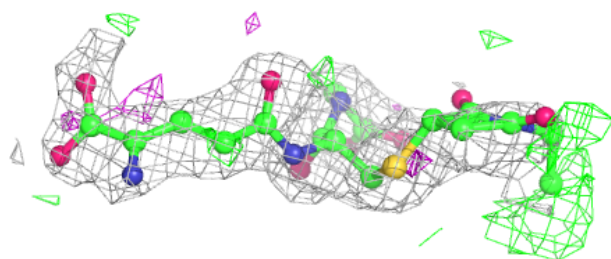
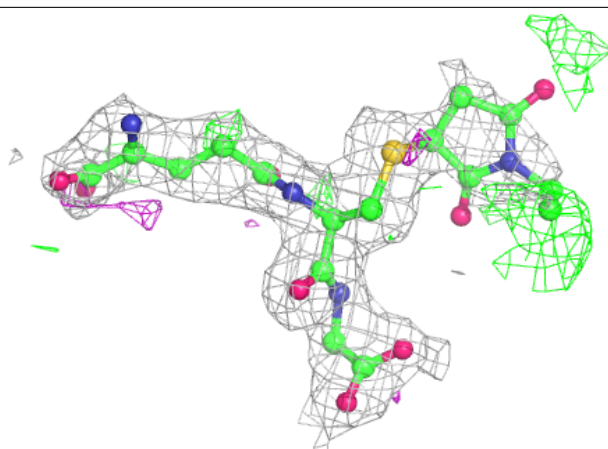
Electron density around L9X B 1178 (B):

$2mF_o-DF_c$ (at 0.7 rmsd) in gray
 mF_o-DF_c (at 3 rmsd) in purple (negative)
and green (positive)



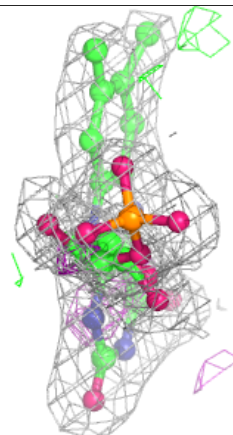
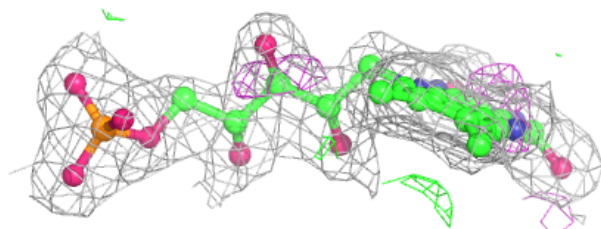
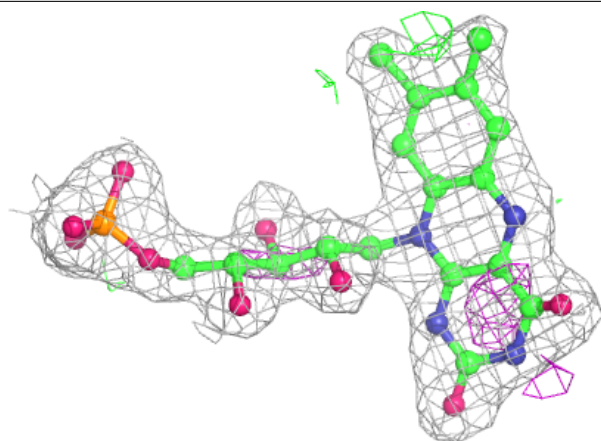
Electron density around ESG B 1177 (A):

$2mF_o-DF_c$ (at 0.7 rmsd) in gray
 mF_o-DF_c (at 3 rmsd) in purple (negative)
and green (positive)



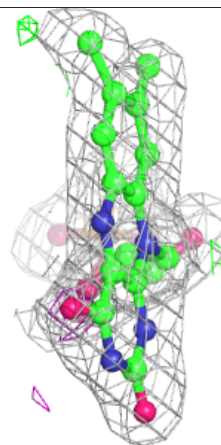
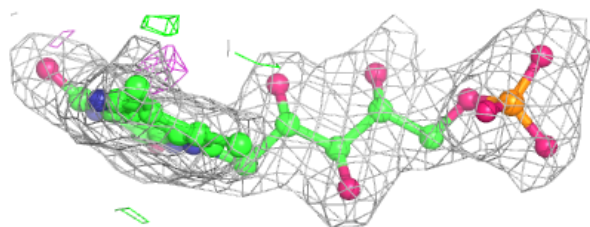
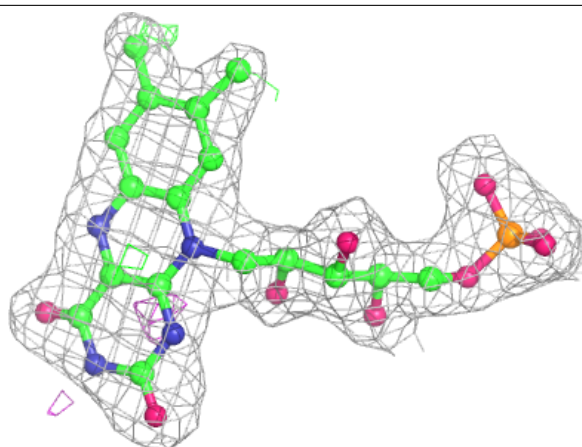
Electron density around FMN B 2400:

$2mF_o-DF_c$ (at 0.7 rmsd) in gray
 mF_o-DF_c (at 3 rmsd) in purple (negative)
and green (positive)



Electron density around FMN A 2400:

$2mF_o-DF_c$ (at 0.7 rmsd) in gray
 mF_o-DF_c (at 3 rmsd) in purple (negative)
and green (positive)



6.5 Other polymers ⓘ

There are no such residues in this entry.