



Full wwPDB X-ray Structure Validation Report ⓘ

Jan 5, 2022 – 02:06 PM EST

PDB ID : 7L9M
Title : Crystal structure of the first bromodomain (BD1) of human BRD4 in complex with bivalent inhibitor GXH-II-083
Authors : Karim, M.R.; Schonbrunn, E.
Deposited on : 2021-01-04
Resolution : 1.45 Å(reported)

This is a Full wwPDB X-ray Structure Validation Report for a publicly released PDB entry.

We welcome your comments at validation@mail.wwpdb.org

A user guide is available at

<https://www.wwpdb.org/validation/2017/XrayValidationReportHelp>

with specific help available everywhere you see the ⓘ symbol.

The following versions of software and data (see [references ⓘ](#)) were used in the production of this report:

MolProbity : 4.02b-467
Mogul : 1.8.5 (274361), CSD as541be (2020)
Xtriage (Phenix) : 1.13
EDS : 2.25
buster-report : 1.1.7 (2018)
Percentile statistics : 20191225.v01 (using entries in the PDB archive December 25th 2019)
Refmac : 5.8.0158
CCP4 : 7.0.044 (Gargrove)
Ideal geometry (proteins) : Engh & Huber (2001)
Ideal geometry (DNA, RNA) : Parkinson et al. (1996)
Validation Pipeline (wwPDB-VP) : 2.25

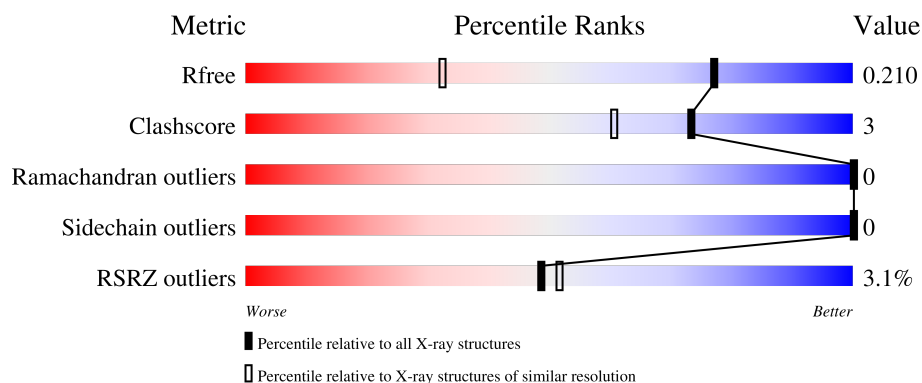
1 Overall quality at a glance

The following experimental techniques were used to determine the structure:

X-RAY DIFFRACTION

The reported resolution of this entry is 1.45 Å.

Percentile scores (ranging between 0-100) for global validation metrics of the entry are shown in the following graphic. The table shows the number of entries on which the scores are based.



Metric	Whole archive (#Entries)	Similar resolution (#Entries, resolution range(Å))
R_{free}	130704	1156 (1.46-1.46)
Clashscore	141614	1202 (1.46-1.46)
Ramachandran outliers	138981	1178 (1.46-1.46)
Sidechain outliers	138945	1178 (1.46-1.46)
RSRZ outliers	127900	1139 (1.46-1.46)

The table below summarises the geometric issues observed across the polymeric chains and their fit to the electron density. The red, orange, yellow and green segments of the lower bar indicate the fraction of residues that contain outliers for ≥ 3 , 2, 1 and 0 types of geometric quality criteria respectively. A grey segment represents the fraction of residues that are not modelled. The numeric value for each fraction is indicated below the corresponding segment, with a dot representing fractions $\leq 5\%$. The upper red bar (where present) indicates the fraction of residues that have poor fit to the electron density. The numeric value is given above the bar.

Mol	Chain	Length	Quality of chain
1	A	127	<div> <div>3%</div> <div> <div></div> <div>91%</div> <div>9%</div> </div> </div>
1	B	127	<div> <div>3%</div> <div> <div></div> <div>95%</div> <div>5%</div> </div> </div>

2 Entry composition [i](#)

There are 4 unique types of molecules in this entry. The entry contains 2535 atoms, of which 0 are hydrogens and 0 are deuteriums.

In the tables below, the ZeroOcc column contains the number of atoms modelled with zero occupancy, the AltConf column contains the number of residues with at least one atom in alternate conformation and the Trace column contains the number of residues modelled with at most 2 atoms.

- Molecule 1 is a protein called Bromodomain-containing protein 4.

Mol	Chain	Residues	Atoms					ZeroOcc	AltConf	Trace
1	A	127	Total	C	N	O	S	0	2	0
			1045	677	171	191	6			
1	B	127	Total	C	N	O	S	0	0	0
			1053	683	174	190	6			

There are 4 discrepancies between the modelled and reference sequences:

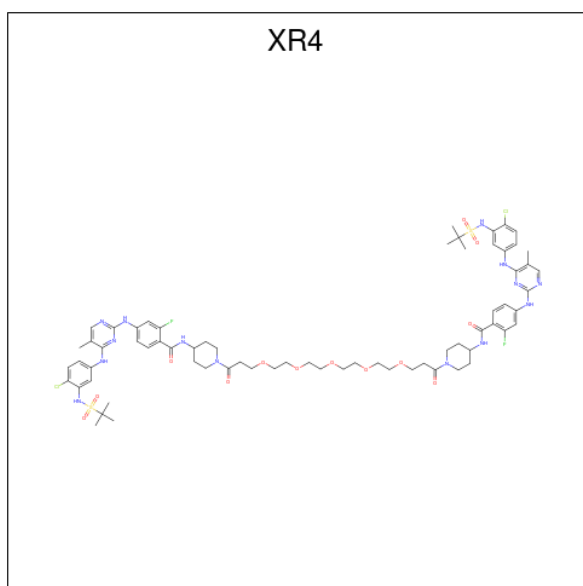
Chain	Residue	Modelled	Actual	Comment	Reference
A	42	SER	-	expression tag	UNP O60885
A	43	MET	-	expression tag	UNP O60885
B	42	SER	-	expression tag	UNP O60885
B	43	MET	-	expression tag	UNP O60885

- Molecule 2 is 1,2-ETHANEDIOL (three-letter code: EDO) (formula: C₂H₆O₂).



Mol	Chain	Residues	Atoms	ZeroOcc	AltConf
2	A	1	Total C O 4 2 2	0	0
2	A	1	Total C O 4 2 2	0	0
2	A	1	Total C O 4 2 2	0	0
2	B	1	Total C O 4 2 2	0	0

- Molecule 3 is N,N'-[(1,19-dioxo-4,7,10,13,16-pentaoxanonadecane-1,19-diyl)di(piperidine-1,4-diyl)]bis(4-{[4-({3-[(tert-butylsulfonyl)amino]-4-chlorophenyl}amino)-5-methylpyrimidin-2-yl]amino}-2-fluorobenzamide) (three-letter code: XR4) (formula: C₆₈H₈₈Cl₂F₂N₁₄O₁₃S₂) (labeled as "Ligand of Interest" by depositor).



Mol	Chain	Residues	Atoms						ZeroOcc	AltConf
3	A	1	Total	C	Cl	F	N	O	S	
			101	68	2	2	14	13	2	

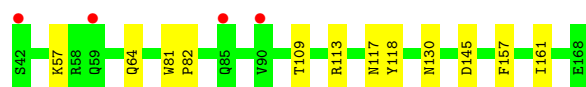
- Molecule 4 is water.

Mol	Chain	Residues	Atoms	ZeroOcc	AltConf
4	A	148	Total O 148 148	0	0
4	B	172	Total O 172 172	0	0

3 Residue-property plots [i](#)

These plots are drawn for all protein, RNA, DNA and oligosaccharide chains in the entry. The first graphic for a chain summarises the proportions of the various outlier classes displayed in the second graphic. The second graphic shows the sequence view annotated by issues in geometry and electron density. Residues are color-coded according to the number of geometric quality criteria for which they contain at least one outlier: green = 0, yellow = 1, orange = 2 and red = 3 or more. A red dot above a residue indicates a poor fit to the electron density ($RSRZ > 2$). Stretches of 2 or more consecutive residues without any outlier are shown as a green connector. Residues present in the sample, but not in the model, are shown in grey.

- Molecule 1: Bromodomain-containing protein 4



- Molecule 1: Bromodomain-containing protein 4



4 Data and refinement statistics

Property	Value	Source
Space group	P 1	Depositor
Cell constants a, b, c, α , β , γ	30.27Å 40.07Å 57.35Å 100.10° 104.61° 90.07°	Depositor
Resolution (Å)	29.08 – 1.45 54.57 – 1.45	Depositor EDS
% Data completeness (in resolution range)	88.9 (29.08-1.45) 88.9 (54.57-1.45)	Depositor EDS
R_{merge}	0.20	Depositor
R_{sym}	(Not available)	Depositor
$\langle I/\sigma(I) \rangle$ ¹	3.28 (at 1.45Å)	Xtriage
Refinement program	PHENIX 1.18.2-3874 _3874	Depositor
R, R_{free}	0.176 , 0.202 0.184 , 0.210	Depositor DCC
R_{free} test set	1012 reflections (2.50%)	wwPDB-VP
Wilson B-factor (Å ²)	15.5	Xtriage
Anisotropy	0.434	Xtriage
Bulk solvent k_{sol} (e/Å ³), B_{sol} (Å ²)	0.34 , 43.4	EDS
L-test for twinning ²	$\langle L \rangle = 0.50$, $\langle L^2 \rangle = 0.33$	Xtriage
Estimated twinning fraction	0.033 for h,-k,-h-l	Xtriage
F_o, F_c correlation	0.96	EDS
Total number of atoms	2535	wwPDB-VP
Average B, all atoms (Å ²)	21.0	wwPDB-VP

Xtriage's analysis on translational NCS is as follows: *The largest off-origin peak in the Patterson function is 11.43% of the height of the origin peak. No significant pseudotranslation is detected.*

¹Intensities estimated from amplitudes.

²Theoretical values of $\langle |L| \rangle$, $\langle L^2 \rangle$ for acentric reflections are 0.5, 0.333 respectively for untwinned datasets, and 0.375, 0.2 for perfectly twinned datasets.

5 Model quality [i](#)

5.1 Standard geometry [i](#)

Bond lengths and bond angles in the following residue types are not validated in this section: XR4, EDO

The Z score for a bond length (or angle) is the number of standard deviations the observed value is removed from the expected value. A bond length (or angle) with $|Z| > 5$ is considered an outlier worth inspection. RMSZ is the root-mean-square of all Z scores of the bond lengths (or angles).

Mol	Chain	Bond lengths		Bond angles	
		RMSZ	$\# Z > 5$	RMSZ	$\# Z > 5$
1	A	0.82	0/1085	0.86	0/1481
1	B	0.86	0/1083	0.88	0/1475
All	All	0.84	0/2168	0.87	0/2956

There are no bond length outliers.

There are no bond angle outliers.

There are no chirality outliers.

There are no planarity outliers.

5.2 Too-close contacts [i](#)

In the following table, the Non-H and H(model) columns list the number of non-hydrogen atoms and hydrogen atoms in the chain respectively. The H(added) column lists the number of hydrogen atoms added and optimized by MolProbity. The Clashes column lists the number of clashes within the asymmetric unit, whereas Symm-Clashes lists symmetry-related clashes.

Mol	Chain	Non-H	H(model)	H(added)	Clashes	Symm-Clashes
1	A	1045	0	1018	8	0
1	B	1053	0	1042	6	0
2	A	12	0	18	0	0
2	B	4	0	6	0	0
3	A	101	0	0	0	0
4	A	148	0	0	3	0
4	B	172	0	0	2	0
All	All	2535	0	2084	14	0

The all-atom clashscore is defined as the number of clashes found per 1000 atoms (including hydrogen atoms). The all-atom clashscore for this structure is 3.

All (14) close contacts within the same asymmetric unit are listed below, sorted by their clash magnitude.

Atom-1	Atom-2	Interatomic distance (Å)	Clash overlap (Å)
1:B:60:THR:O	1:B:64:GLN:HG3	1.84	0.77
1:A:130[A]:ASN:ND2	4:A:302:HOH:O	2.22	0.69
1:B:71:LEU:O	1:B:71:LEU:HD13	1.95	0.66
1:B:155:LYS:O	1:B:159:GLN:HG3	1.98	0.64
1:A:145:ASP:OD1	4:A:301:HOH:O	2.17	0.60
1:B:72:LYS:HE3	4:B:420:HOH:O	2.06	0.55
1:A:57:LYS:HD3	1:A:117:ASN:HB2	1.89	0.53
1:A:109:THR:O	1:A:113:ARG:HG3	2.09	0.52
1:A:81:TRP:CG	1:A:82:PRO:HD3	2.48	0.48
1:A:64:GLN:NE2	4:A:303:HOH:O	2.32	0.47
1:A:113:ARG:HD3	1:A:118:TYR:CD2	2.51	0.45
1:B:71:LEU:HD13	1:B:71:LEU:C	2.37	0.43
1:A:157:PHE:O	1:A:161:ILE:HG12	2.20	0.42
1:B:64:GLN:HG2	4:B:427:HOH:O	2.21	0.41

There are no symmetry-related clashes.

5.3 Torsion angles [i](#)

5.3.1 Protein backbone [i](#)

In the following table, the Percentiles column shows the percent Ramachandran outliers of the chain as a percentile score with respect to all X-ray entries followed by that with respect to entries of similar resolution.

The Analysed column shows the number of residues for which the backbone conformation was analysed, and the total number of residues.

Mol	Chain	Analysed	Favoured	Allowed	Outliers	Percentiles	
1	A	127/127 (100%)	126 (99%)	1 (1%)	0	100	100
1	B	125/127 (98%)	124 (99%)	1 (1%)	0	100	100
All	All	252/254 (99%)	250 (99%)	2 (1%)	0	100	100

There are no Ramachandran outliers to report.

5.3.2 Protein sidechains [i](#)

In the following table, the Percentiles column shows the percent sidechain outliers of the chain as a percentile score with respect to all X-ray entries followed by that with respect to entries of similar resolution.

The Analysed column shows the number of residues for which the sidechain conformation was analysed, and the total number of residues.

Mol	Chain	Analysed	Rotameric	Outliers	Percentiles	
1	A	116/120 (97%)	116 (100%)	0	100	100
1	B	117/120 (98%)	117 (100%)	0	100	100
All	All	233/240 (97%)	233 (100%)	0	100	100

There are no protein residues with a non-rotameric sidechain to report.

Sometimes sidechains can be flipped to improve hydrogen bonding and reduce clashes. There are no such sidechains identified.

5.3.3 RNA [i](#)

There are no RNA molecules in this entry.

5.4 Non-standard residues in protein, DNA, RNA chains [i](#)

There are no non-standard protein/DNA/RNA residues in this entry.

5.5 Carbohydrates [i](#)

There are no monosaccharides in this entry.

5.6 Ligand geometry [i](#)

5 ligands are modelled in this entry.

In the following table, the Counts columns list the number of bonds (or angles) for which Mogul statistics could be retrieved, the number of bonds (or angles) that are observed in the model and the number of bonds (or angles) that are defined in the Chemical Component Dictionary. The Link column lists molecule types, if any, to which the group is linked. The Z score for a bond length (or angle) is the number of standard deviations the observed value is removed from the expected value. A bond length (or angle) with $|Z| > 2$ is considered an outlier worth inspection. RMSZ is the root-mean-square of all Z scores of the bond lengths (or angles).

Mol	Type	Chain	Res	Link	Bond lengths			Bond angles		
					Counts	RMSZ	# Z > 2	Counts	RMSZ	# Z > 2
2	EDO	A	202	-	3,3,3	0.40	0	2,2,2	0.21	0
3	XR4	A	204	-	108,108,108	2.34	29 (26%)	147,153,153	1.97	37 (25%)
2	EDO	A	203	-	3,3,3	0.80	0	2,2,2	0.23	0
2	EDO	B	201	-	3,3,3	0.58	0	2,2,2	0.37	0
2	EDO	A	201	-	3,3,3	0.43	0	2,2,2	0.44	0

In the following table, the Chirals column lists the number of chiral outliers, the number of chiral centers analysed, the number of these observed in the model and the number defined in the Chemical Component Dictionary. Similar counts are reported in the Torsion and Rings columns. '-' means no outliers of that kind were identified.

Mol	Type	Chain	Res	Link	Chirals	Torsions	Rings
2	EDO	A	202	-	-	0/1/1/1	-
3	XR4	A	204	-	-	15/88/108/108	0/8/8/8
2	EDO	A	203	-	-	0/1/1/1	-
2	EDO	B	201	-	-	0/1/1/1	-
2	EDO	A	201	-	-	0/1/1/1	-

All (29) bond length outliers are listed below:

Mol	Chain	Res	Type	Atoms	Z	Observed(Å)	Ideal(Å)
3	A	204	XR4	O93-S91	9.75	1.61	1.43
3	A	204	XR4	O92-S91	7.35	1.57	1.43
3	A	204	XR4	O68-S66	7.11	1.56	1.43
3	A	204	XR4	S91-N90	7.05	1.69	1.59
3	A	204	XR4	S66-N65	6.85	1.69	1.59
3	A	204	XR4	O67-S66	5.14	1.53	1.43
3	A	204	XR4	C50-C48	-4.44	1.41	1.50
3	A	204	XR4	C50-C79	4.22	1.44	1.38
3	A	204	XR4	C10-C11	-3.70	1.42	1.50
3	A	204	XR4	C78-C79	3.48	1.43	1.37
3	A	204	XR4	C69-S66	3.36	1.84	1.81
3	A	204	XR4	O49-C48	2.96	1.29	1.23
3	A	204	XR4	C01-C02	-2.77	1.45	1.51
3	A	204	XR4	C39-N41	2.74	1.40	1.35
3	A	204	XR4	C20-N17	2.70	1.40	1.35
3	A	204	XR4	O40-C39	2.57	1.28	1.23
3	A	204	XR4	C22-C23	2.55	1.58	1.51
3	A	204	XR4	C15-C14	2.55	1.58	1.52
3	A	204	XR4	C87-N86	-2.47	1.35	1.40
3	A	204	XR4	C71-C69	2.45	1.57	1.52
3	A	204	XR4	O12-C11	2.43	1.28	1.23

Continued on next page...

Continued from previous page...

Mol	Chain	Res	Type	Atoms	Z	Observed(Å)	Ideal(Å)
3	A	204	XR4	C97-C94	2.39	1.57	1.52
3	A	204	XR4	C61-C60	2.21	1.42	1.38
3	A	204	XR4	C51-C50	-2.20	1.36	1.39
3	A	204	XR4	F80-C79	-2.18	1.30	1.35
3	A	204	XR4	C83-C81	2.17	1.41	1.37
3	A	204	XR4	C07-N06	-2.12	1.36	1.40
3	A	204	XR4	C10-C81	2.11	1.41	1.38
3	A	204	XR4	C96-C94	2.08	1.56	1.52

All (37) bond angle outliers are listed below:

Mol	Chain	Res	Type	Atoms	Z	Observed(°)	Ideal(°)
3	A	204	XR4	N04-C05-N84	-6.90	120.01	126.55
3	A	204	XR4	C02-C03-N04	-6.38	118.58	125.11
3	A	204	XR4	N77-C55-N56	-6.23	120.65	126.55
3	A	204	XR4	O67-S66-C69	5.47	111.99	107.60
3	A	204	XR4	C22-C20-N17	4.44	124.95	118.01
3	A	204	XR4	O92-S91-C94	-4.38	104.08	107.60
3	A	204	XR4	C38-C39-N41	4.29	124.72	118.01
3	A	204	XR4	C03-N04-C05	4.22	122.25	115.88
3	A	204	XR4	C53-C78-C79	-3.92	115.55	118.76
3	A	204	XR4	C51-C52-C53	3.81	124.70	120.30
3	A	204	XR4	C98-C89-N90	-3.80	117.21	120.74
3	A	204	XR4	C10-C11-N13	3.75	123.75	116.80
3	A	204	XR4	C14-N13-C11	-3.33	117.94	122.55
3	A	204	XR4	C62-C64-N65	-3.32	117.65	120.74
3	A	204	XR4	C50-C48-N47	3.24	122.80	116.80
3	A	204	XR4	C83-C07-N06	3.03	130.57	120.32
3	A	204	XR4	C08-C07-N06	-2.99	110.63	120.64
3	A	204	XR4	O93-S91-O92	-2.94	114.60	120.57
3	A	204	XR4	C74-C76-N77	-2.86	122.19	125.11
3	A	204	XR4	C02-C85-N84	-2.84	120.13	123.37
3	A	204	XR4	C74-C57-N56	-2.64	120.35	123.37
3	A	204	XR4	C43-C44-N47	2.57	115.88	110.56
3	A	204	XR4	O68-S66-O67	-2.46	115.57	120.57
3	A	204	XR4	C52-C53-N54	-2.41	112.57	120.64
3	A	204	XR4	N86-C85-N84	2.40	122.69	119.12
3	A	204	XR4	F80-C79-C78	-2.32	113.98	118.61
3	A	204	XR4	C76-N77-C55	2.32	119.37	115.88
3	A	204	XR4	C55-N56-C57	2.30	121.67	116.39
3	A	204	XR4	C64-C62-CL63	2.25	122.11	119.54
3	A	204	XR4	O49-C48-C50	-2.22	116.97	121.01

Continued on next page...

Continued from previous page...

Mol	Chain	Res	Type	Atoms	Z	Observed(°)	Ideal(°)
3	A	204	XR4	C45-C44-N47	-2.16	106.10	110.56
3	A	204	XR4	C18-N17-C16	2.15	116.75	112.62
3	A	204	XR4	C52-C51-C50	-2.14	117.46	120.94
3	A	204	XR4	O12-C11-C10	-2.13	117.11	121.01
3	A	204	XR4	O49-C48-N47	-2.13	118.54	122.45
3	A	204	XR4	C89-C98-CL99	2.05	121.87	119.54
3	A	204	XR4	C78-C53-N54	2.01	127.12	120.32

There are no chirality outliers.

All (15) torsion outliers are listed below:

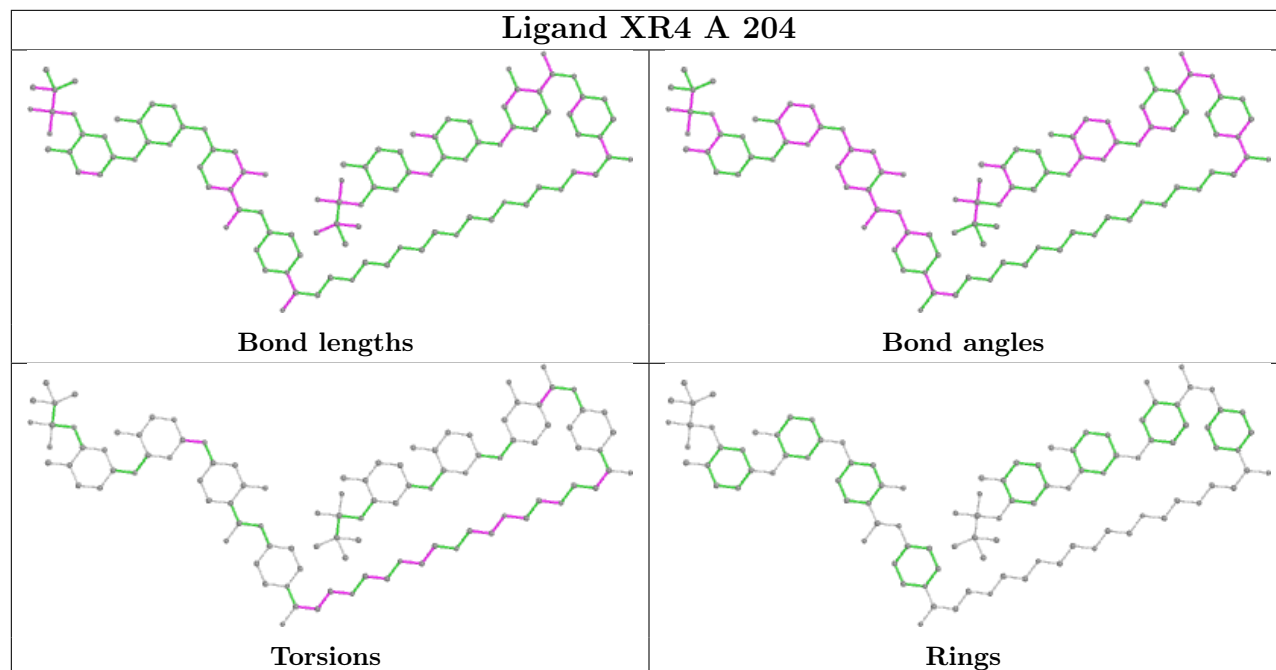
Mol	Chain	Res	Type	Atoms
3	A	204	XR4	O36-C37-C38-C39
3	A	204	XR4	C37-C38-C39-N41
3	A	204	XR4	C37-C38-C39-O40
3	A	204	XR4	C26-C25-O24-C23
3	A	204	XR4	C38-C37-O36-C35
3	A	204	XR4	C29-C28-O27-C26
3	A	204	XR4	O30-C31-C32-O33
3	A	204	XR4	O33-C34-C35-O36
3	A	204	XR4	C81-C10-C11-O12
3	A	204	XR4	C31-C32-O33-C34
3	A	204	XR4	C81-C10-C11-N13
3	A	204	XR4	N56-C55-N54-C53
3	A	204	XR4	C25-C26-O27-C28
3	A	204	XR4	O21-C20-C22-C23
3	A	204	XR4	O27-C28-C29-O30

There are no ring outliers.

No monomer is involved in short contacts.

The following is a two-dimensional graphical depiction of Mogul quality analysis of bond lengths, bond angles, torsion angles, and ring geometry for all instances of the Ligand of Interest. In addition, ligands with molecular weight > 250 and outliers as shown on the validation Tables will also be included. For torsion angles, if less than 5% of the Mogul distribution of torsion angles is within 10 degrees of the torsion angle in question, then that torsion angle is considered an outlier. Any bond that is central to one or more torsion angles identified as an outlier by Mogul will be highlighted in the graph. For rings, the root-mean-square deviation (RMSD) between the ring in question and similar rings identified by Mogul is calculated over all ring torsion angles. If the average RMSD is greater than 60 degrees and the minimal RMSD between the ring in question and any Mogul-identified rings is also greater than 60 degrees, then that ring is considered an outlier. The outliers are highlighted in purple. The color gray indicates Mogul did not find sufficient

equivalents in the CSD to analyse the geometry.



5.7 Other polymers [i](#)

There are no such residues in this entry.

5.8 Polymer linkage issues [i](#)

There are no chain breaks in this entry.

6 Fit of model and data [i](#)

6.1 Protein, DNA and RNA chains [i](#)

In the following table, the column labelled ‘#RSRZ> 2’ contains the number (and percentage) of RSRZ outliers, followed by percent RSRZ outliers for the chain as percentile scores relative to all X-ray entries and entries of similar resolution. The OWAB column contains the minimum, median, 95th percentile and maximum values of the occupancy-weighted average B-factor per residue. The column labelled ‘Q< 0.9’ lists the number of (and percentage) of residues with an average occupancy less than 0.9.

Mol	Chain	Analysed	<RSRZ>	#RSRZ>2	OWAB(Å ²)	Q<0.9
1	A	127/127 (100%)	0.11	4 (3%) 49 52	12, 19, 32, 46	0
1	B	127/127 (100%)	0.02	4 (3%) 49 52	11, 18, 29, 42	0
All	All	254/254 (100%)	0.07	8 (3%) 49 52	11, 18, 32, 46	0

All (8) RSRZ outliers are listed below:

Mol	Chain	Res	Type	RSRZ
1	A	42	SER	3.8
1	B	168	GLU	2.9
1	A	59	GLN	2.7
1	A	85	GLN	2.5
1	B	42	SER	2.4
1	A	90	VAL	2.2
1	B	161	ILE	2.0
1	B	54	ASN	2.0

6.2 Non-standard residues in protein, DNA, RNA chains [i](#)

There are no non-standard protein/DNA/RNA residues in this entry.

6.3 Carbohydrates [i](#)

There are no monosaccharides in this entry.

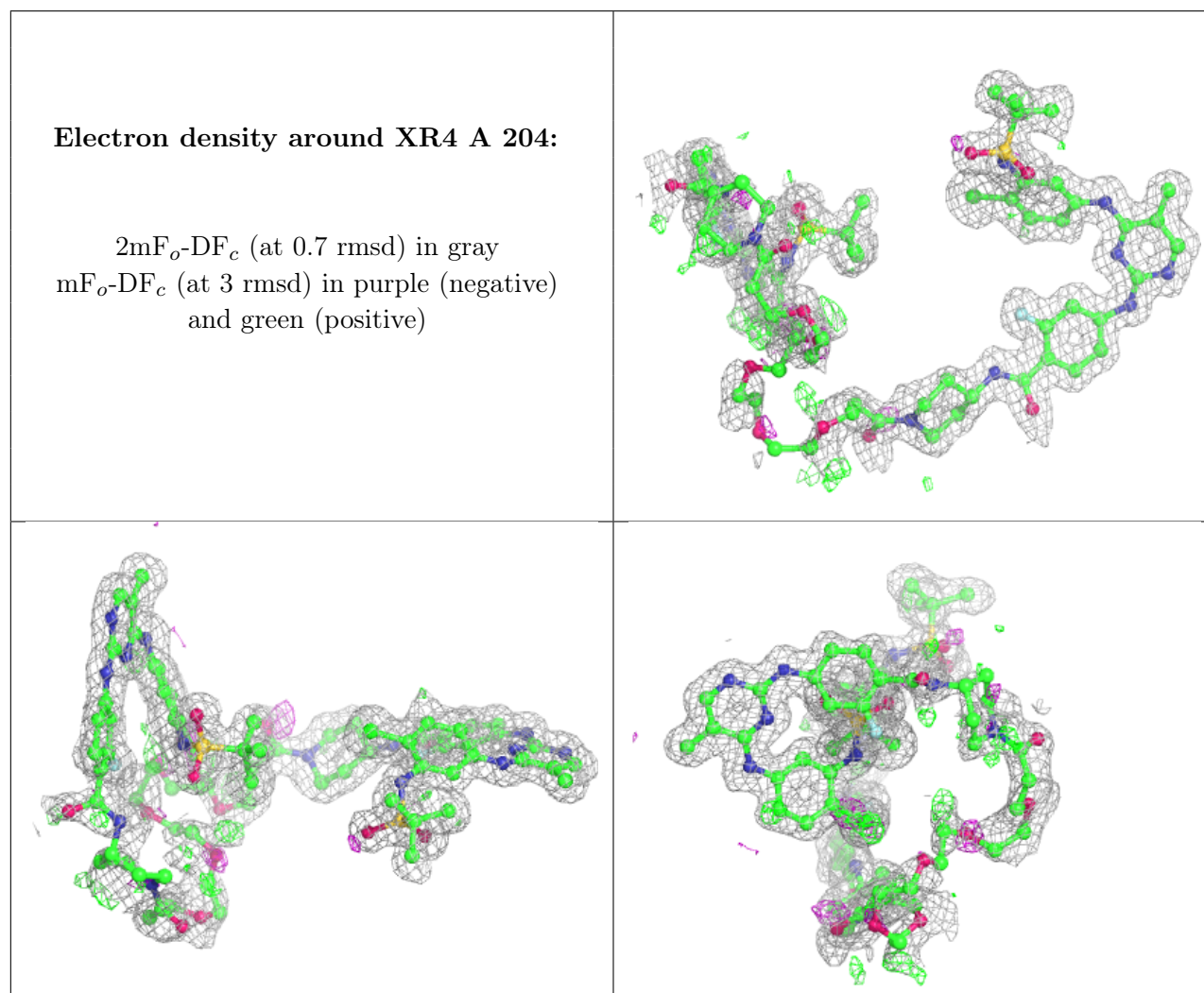
6.4 Ligands [i](#)

In the following table, the Atoms column lists the number of modelled atoms in the group and the number defined in the chemical component dictionary. The B-factors column lists the minimum,

median, 95th percentile and maximum values of B factors of atoms in the group. The column labelled 'Q<0.9' lists the number of atoms with occupancy less than 0.9.

Mol	Type	Chain	Res	Atoms	RSCC	RSR	B-factors(\AA^2)	Q<0.9
2	EDO	A	203	4/4	0.70	0.31	32,34,37,39	0
3	XR4	A	204	101/101	0.94	0.12	11,20,48,57	0
2	EDO	A	202	4/4	0.95	0.13	24,26,30,34	0
2	EDO	B	201	4/4	0.96	0.09	17,21,22,24	0
2	EDO	A	201	4/4	0.97	0.08	16,19,22,26	0

The following is a graphical depiction of the model fit to experimental electron density of all instances of the Ligand of Interest. In addition, ligands with molecular weight > 250 and outliers as shown on the geometry validation Tables will also be included. Each fit is shown from different orientation to approximate a three-dimensional view.



6.5 Other polymers ⓘ

There are no such residues in this entry.