



wwPDB X-ray Structure Validation Summary Report ⓘ

Aug 7, 2020 – 11:19 AM BST

PDB ID : 3LBC
Title : D-sialic acid aldolase complexed with L-arabinose
Authors : Chou, C.-Y.; Ko, T.-P.; Wang, A.H.-J.
Deposited on : 2010-01-08
Resolution : 1.85 Å(reported)

This is a wwPDB X-ray Structure Validation Summary Report for a publicly released PDB entry.

We welcome your comments at validation@mail.wwpdb.org

A user guide is available at

<https://www.wwpdb.org/validation/2017/XrayValidationReportHelp>

with specific help available everywhere you see the ⓘ symbol.

The following versions of software and data (see [references ⓘ](#)) were used in the production of this report:

MolProbity : 4.02b-467
Mogul : 1.8.5 (274361), CSD as541be (2020)
Xtriage (Phenix) : 1.13
EDS : 2.13.1
Percentile statistics : 20191225.v01 (using entries in the PDB archive December 25th 2019)
Refmac : 5.8.0158
CCP4 : 7.0.044 (Gargrove)
Ideal geometry (proteins) : Engh & Huber (2001)
Ideal geometry (DNA, RNA) : Parkinson et al. (1996)
Validation Pipeline (wwPDB-VP) : 2.13.1

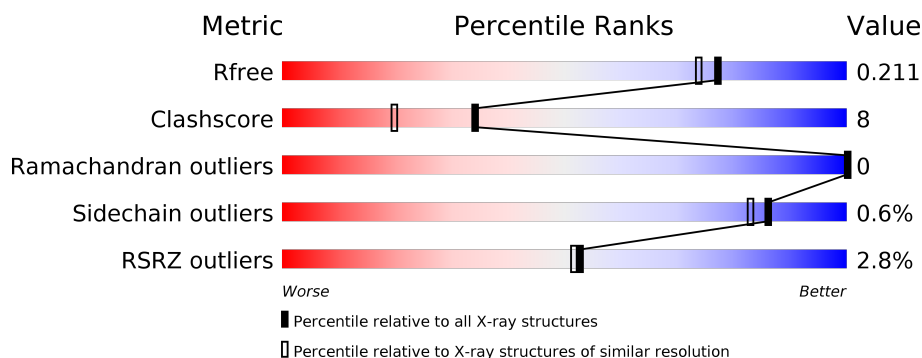
1 Overall quality at a glance ⓘ

The following experimental techniques were used to determine the structure:

X-RAY DIFFRACTION

The reported resolution of this entry is 1.85 Å.

Percentile scores (ranging between 0-100) for global validation metrics of the entry are shown in the following graphic. The table shows the number of entries on which the scores are based.



Metric	Whole archive (#Entries)	Similar resolution (#Entries, resolution range(Å))
R_{free}	130704	2469 (1.86-1.86)
Clashscore	141614	2625 (1.86-1.86)
Ramachandran outliers	138981	2592 (1.86-1.86)
Sidechain outliers	138945	2592 (1.86-1.86)
RSRZ outliers	127900	2436 (1.86-1.86)

The table below summarises the geometric issues observed across the polymeric chains and their fit to the electron density. The red, orange, yellow and green segments on the lower bar indicate the fraction of residues that contain outliers for ≥ 3 , 2, 1 and 0 types of geometric quality criteria respectively. A grey segment represents the fraction of residues that are not modelled. The numeric value for each fraction is indicated below the corresponding segment, with a dot representing fractions $\leq 5\%$. The upper red bar (where present) indicates the fraction of residues that have poor fit to the electron density. The numeric value is given above the bar.

Mol	Chain	Length	Quality of chain
1	A	319	<div> <div>3%</div> <div> <div></div> <div>75%</div> <div>17%</div> <div>8%</div> </div> </div>
1	B	319	<div> <div>2%</div> <div> <div></div> <div>76%</div> <div>16%</div> <div>8%</div> </div> </div>
1	C	319	<div> <div>4%</div> <div> <div></div> <div>74%</div> <div>18%</div> <div>8%</div> </div> </div>
1	D	319	<div> <div>2%</div> <div> <div></div> <div>76%</div> <div>17%</div> <div>7%</div> </div> </div>

2 Entry composition

There are 4 unique types of molecules in this entry. The entry contains 10437 atoms, of which 0 are hydrogens and 0 are deuteriums.

In the tables below, the ZeroOcc column contains the number of atoms modelled with zero occupancy, the AltConf column contains the number of residues with at least one atom in alternate conformation and the Trace column contains the number of residues modelled with at most 2 atoms.

- Molecule 1 is a protein called N-acetylneuraminase lyase.

Mol	Chain	Residues	Atoms					ZeroOcc	AltConf	Trace
1	A	293	Total	C	N	O	S	0	0	0
			2267	1445	384	428	10			
1	B	295	Total	C	N	O	S	0	0	0
			2279	1452	386	431	10			
1	C	294	Total	C	N	O	S	0	0	0
			2274	1449	385	430	10			
1	D	296	Total	C	N	O	S	0	0	0
			2287	1457	387	432	11			

There are 88 discrepancies between the modelled and reference sequences:

Chain	Residue	Modelled	Actual	Comment	Reference
A	-21	MET	-	expression tag	UNP P0A6L4
A	-20	GLY	-	expression tag	UNP P0A6L4
A	-19	HIS	-	expression tag	UNP P0A6L4
A	-18	HIS	-	expression tag	UNP P0A6L4
A	-17	HIS	-	expression tag	UNP P0A6L4
A	-16	HIS	-	expression tag	UNP P0A6L4
A	-15	HIS	-	expression tag	UNP P0A6L4
A	-14	HIS	-	expression tag	UNP P0A6L4
A	-13	HIS	-	expression tag	UNP P0A6L4
A	-12	HIS	-	expression tag	UNP P0A6L4
A	-11	HIS	-	expression tag	UNP P0A6L4
A	-10	HIS	-	expression tag	UNP P0A6L4
A	-9	SER	-	expression tag	UNP P0A6L4
A	-8	SER	-	expression tag	UNP P0A6L4
A	-7	GLY	-	expression tag	UNP P0A6L4
A	-6	HIS	-	expression tag	UNP P0A6L4
A	-5	ILE	-	expression tag	UNP P0A6L4
A	-4	GLU	-	expression tag	UNP P0A6L4
A	-3	GLY	-	expression tag	UNP P0A6L4
A	-2	ARG	-	expression tag	UNP P0A6L4
A	-1	HIS	-	expression tag	UNP P0A6L4

Continued on next page...

Continued from previous page...

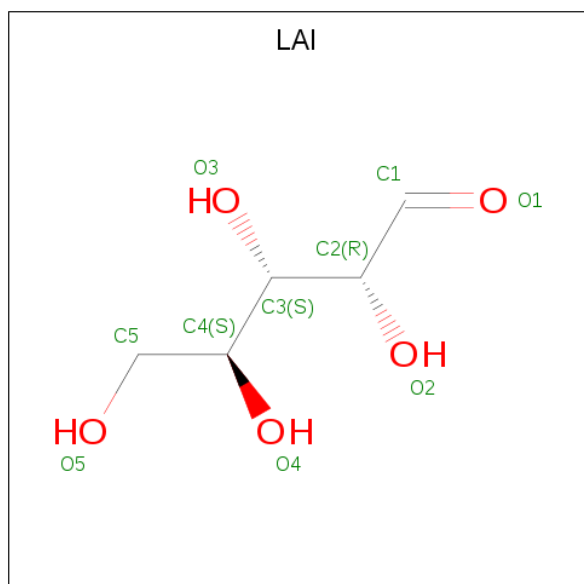
Chain	Residue	Modelled	Actual	Comment	Reference
A	0	MET	-	expression tag	UNP P0A6L4
B	-21	MET	-	expression tag	UNP P0A6L4
B	-20	GLY	-	expression tag	UNP P0A6L4
B	-19	HIS	-	expression tag	UNP P0A6L4
B	-18	HIS	-	expression tag	UNP P0A6L4
B	-17	HIS	-	expression tag	UNP P0A6L4
B	-16	HIS	-	expression tag	UNP P0A6L4
B	-15	HIS	-	expression tag	UNP P0A6L4
B	-14	HIS	-	expression tag	UNP P0A6L4
B	-13	HIS	-	expression tag	UNP P0A6L4
B	-12	HIS	-	expression tag	UNP P0A6L4
B	-11	HIS	-	expression tag	UNP P0A6L4
B	-10	HIS	-	expression tag	UNP P0A6L4
B	-9	SER	-	expression tag	UNP P0A6L4
B	-8	SER	-	expression tag	UNP P0A6L4
B	-7	GLY	-	expression tag	UNP P0A6L4
B	-6	HIS	-	expression tag	UNP P0A6L4
B	-5	ILE	-	expression tag	UNP P0A6L4
B	-4	GLU	-	expression tag	UNP P0A6L4
B	-3	GLY	-	expression tag	UNP P0A6L4
B	-2	ARG	-	expression tag	UNP P0A6L4
B	-1	HIS	-	expression tag	UNP P0A6L4
B	0	MET	-	expression tag	UNP P0A6L4
C	-21	MET	-	expression tag	UNP P0A6L4
C	-20	GLY	-	expression tag	UNP P0A6L4
C	-19	HIS	-	expression tag	UNP P0A6L4
C	-18	HIS	-	expression tag	UNP P0A6L4
C	-17	HIS	-	expression tag	UNP P0A6L4
C	-16	HIS	-	expression tag	UNP P0A6L4
C	-15	HIS	-	expression tag	UNP P0A6L4
C	-14	HIS	-	expression tag	UNP P0A6L4
C	-13	HIS	-	expression tag	UNP P0A6L4
C	-12	HIS	-	expression tag	UNP P0A6L4
C	-11	HIS	-	expression tag	UNP P0A6L4
C	-10	HIS	-	expression tag	UNP P0A6L4
C	-9	SER	-	expression tag	UNP P0A6L4
C	-8	SER	-	expression tag	UNP P0A6L4
C	-7	GLY	-	expression tag	UNP P0A6L4
C	-6	HIS	-	expression tag	UNP P0A6L4
C	-5	ILE	-	expression tag	UNP P0A6L4
C	-4	GLU	-	expression tag	UNP P0A6L4
C	-3	GLY	-	expression tag	UNP P0A6L4

Continued on next page...

Continued from previous page...

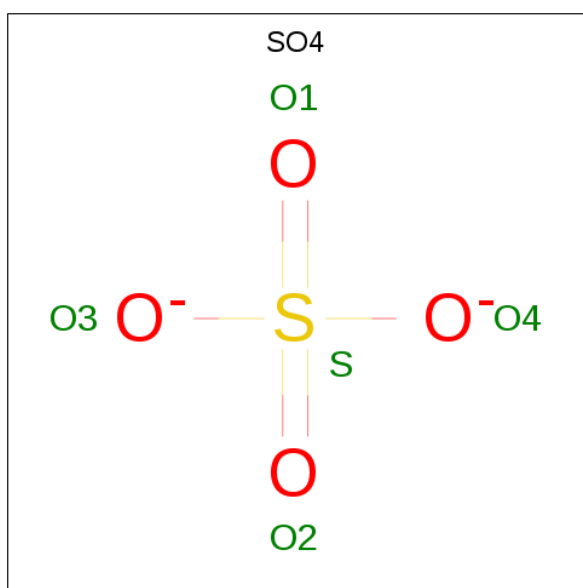
Chain	Residue	Modelled	Actual	Comment	Reference
C	-2	ARG	-	expression tag	UNP P0A6L4
C	-1	HIS	-	expression tag	UNP P0A6L4
C	0	MET	-	expression tag	UNP P0A6L4
D	-21	MET	-	expression tag	UNP P0A6L4
D	-20	GLY	-	expression tag	UNP P0A6L4
D	-19	HIS	-	expression tag	UNP P0A6L4
D	-18	HIS	-	expression tag	UNP P0A6L4
D	-17	HIS	-	expression tag	UNP P0A6L4
D	-16	HIS	-	expression tag	UNP P0A6L4
D	-15	HIS	-	expression tag	UNP P0A6L4
D	-14	HIS	-	expression tag	UNP P0A6L4
D	-13	HIS	-	expression tag	UNP P0A6L4
D	-12	HIS	-	expression tag	UNP P0A6L4
D	-11	HIS	-	expression tag	UNP P0A6L4
D	-10	HIS	-	expression tag	UNP P0A6L4
D	-9	SER	-	expression tag	UNP P0A6L4
D	-8	SER	-	expression tag	UNP P0A6L4
D	-7	GLY	-	expression tag	UNP P0A6L4
D	-6	HIS	-	expression tag	UNP P0A6L4
D	-5	ILE	-	expression tag	UNP P0A6L4
D	-4	GLU	-	expression tag	UNP P0A6L4
D	-3	GLY	-	expression tag	UNP P0A6L4
D	-2	ARG	-	expression tag	UNP P0A6L4
D	-1	HIS	-	expression tag	UNP P0A6L4
D	0	MET	-	expression tag	UNP P0A6L4

- Molecule 2 is L-arabinose (three-letter code: LAI) (formula: C₅H₁₀O₅).



Mol	Chain	Residues	Atoms			ZeroOcc	AltConf
2	A	1	Total	C	O	0	0
			10	5	5		
2	B	1	Total	C	O	0	0
			10	5	5		
2	C	1	Total	C	O	0	0
			10	5	5		
2	D	1	Total	C	O	0	0
			10	5	5		

- Molecule 3 is SULFATE ION (three-letter code: SO4) (formula: O₄S).



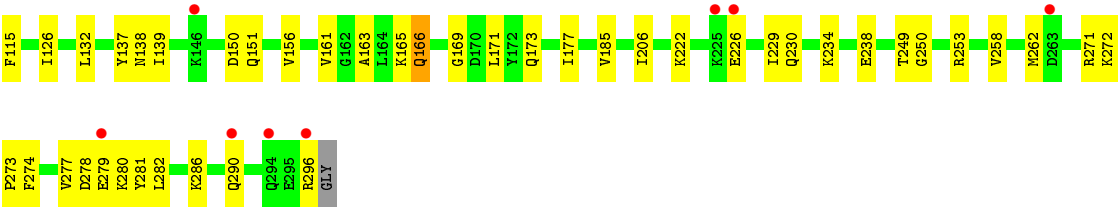
Mol	Chain	Residues	Atoms			ZeroOcc	AltConf
3	A	1	Total	O	S	0	0
			5	4	1		
3	A	1	Total	O	S	0	0
			5	4	1		
3	B	1	Total	O	S	0	0
			5	4	1		
3	B	1	Total	O	S	0	0
			5	4	1		
3	C	1	Total	O	S	0	0
			5	4	1		
3	C	1	Total	O	S	0	0
			5	4	1		
3	D	1	Total	O	S	0	0
			5	4	1		
3	D	1	Total	O	S	0	0
			5	4	1		

- Molecule 4 is water.

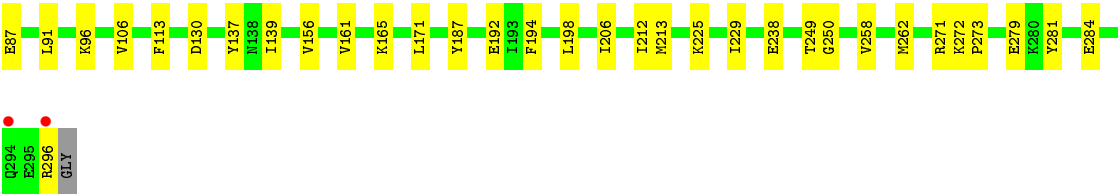
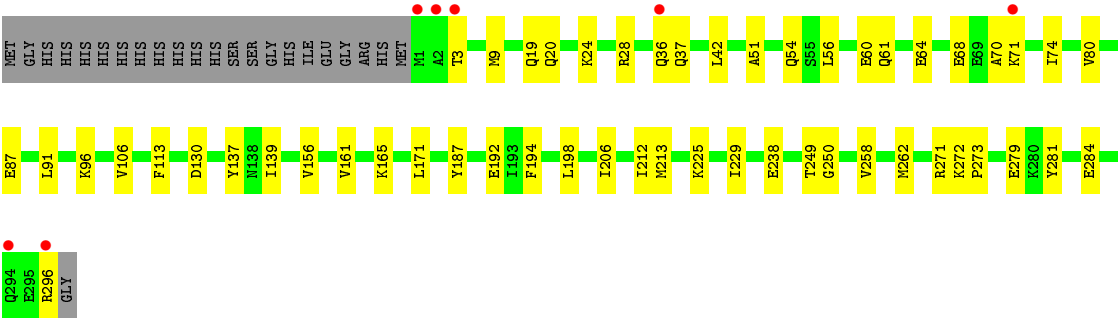
Mol	Chain	Residues	Atoms		ZeroOcc	AltConf
4	A	306	Total 306	O 306	0	0
4	B	305	Total 305	O 305	0	0
4	C	288	Total 288	O 288	0	0
4	D	351	Total 351	O 351	0	0

- Molecule 1: N-acetylneuraminate lyase





● Molecule 1: N-acetylneuraminate lyase



4 Data and refinement statistics

Property	Value	Source
Space group	P 32 2 1	Depositor
Cell constants a, b, c, α , β , γ	121.17Å 121.17Å 199.51Å 90.00° 90.00° 120.00°	Depositor
Resolution (Å)	26.24 – 1.85 26.23 – 1.85	Depositor EDS
% Data completeness (in resolution range)	89.0 (26.24-1.85) 93.7 (26.23-1.85)	Depositor EDS
R_{merge}	0.05	Depositor
R_{sym}	(Not available)	Depositor
$\langle I/\sigma(I) \rangle$ ¹	2.97 (at 1.85Å)	Xtriage
Refinement program	CNS	Depositor
R, R_{free}	0.188 , 0.215 0.185 , 0.211	Depositor DCC
R_{free} test set	7236 reflections (5.05%)	wwPDB-VP
Wilson B-factor (Å ²)	27.0	Xtriage
Anisotropy	0.012	Xtriage
Bulk solvent k_{sol} (e/Å ³), B_{sol} (Å ²)	0.38 , 54.2	EDS
L-test for twinning ²	$\langle L \rangle = 0.49$, $\langle L^2 \rangle = 0.32$	Xtriage
Estimated twinning fraction	0.019 for -h,-k,l	Xtriage
F_o, F_c correlation	0.96	EDS
Total number of atoms	10437	wwPDB-VP
Average B, all atoms (Å ²)	32.0	wwPDB-VP

Xtriage's analysis on translational NCS is as follows: *The largest off-origin peak in the Patterson function is 2.41% of the height of the origin peak. No significant pseudotranslation is detected.*

¹Intensities estimated from amplitudes.

²Theoretical values of $\langle |L| \rangle$, $\langle L^2 \rangle$ for acentric reflections are 0.5, 0.333 respectively for untwinned datasets, and 0.375, 0.2 for perfectly twinned datasets.

5 Model quality [i](#)

5.1 Standard geometry [i](#)

Bond lengths and bond angles in the following residue types are not validated in this section: SO4, LAI

The Z score for a bond length (or angle) is the number of standard deviations the observed value is removed from the expected value. A bond length (or angle) with $|Z| > 5$ is considered an outlier worth inspection. RMSZ is the root-mean-square of all Z scores of the bond lengths (or angles).

Mol	Chain	Bond lengths		Bond angles	
		RMSZ	$\# Z > 5$	RMSZ	$\# Z > 5$
1	A	0.31	0/2307	0.60	1/3122 (0.0%)
1	B	0.30	0/2319	0.59	1/3139 (0.0%)
1	C	0.29	0/2314	0.57	1/3132 (0.0%)
1	D	0.32	0/2327	0.60	1/3149 (0.0%)
All	All	0.30	0/9267	0.59	4/12542 (0.0%)

There are no bond length outliers.

All (4) bond angle outliers are listed below:

Mol	Chain	Res	Type	Atoms	Z	Observed(°)	Ideal(°)
1	A	250	GLY	N-CA-C	-5.99	98.13	113.10
1	D	250	GLY	N-CA-C	-5.95	98.23	113.10
1	B	250	GLY	N-CA-C	-5.53	99.27	113.10
1	C	250	GLY	N-CA-C	-5.38	99.66	113.10

There are no chirality outliers.

There are no planarity outliers.

5.2 Too-close contacts [i](#)

In the following table, the Non-H and H(model) columns list the number of non-hydrogen atoms and hydrogen atoms in the chain respectively. The H(added) column lists the number of hydrogen atoms added and optimized by MolProbity. The Clashes column lists the number of clashes within the asymmetric unit, whereas Symm-Clashes lists symmetry related clashes.

Mol	Chain	Non-H	H(model)	H(added)	Clashes	Symm-Clashes
1	A	2267	0	2288	43	0
1	B	2279	0	2300	39	0
1	C	2274	0	2295	43	0

Continued on next page...

Continued from previous page...

Mol	Chain	Non-H	H(model)	H(added)	Clashes	Symm-Clashes
1	D	2287	0	2312	44	0
2	A	10	0	0	0	0
2	B	10	0	0	1	0
2	C	10	0	0	1	0
2	D	10	0	0	0	0
3	A	10	0	0	0	0
3	B	10	0	0	0	0
3	C	10	0	0	0	0
3	D	10	0	0	0	0
4	A	306	0	0	7	0
4	B	305	0	0	4	0
4	C	288	0	0	6	0
4	D	351	0	0	5	0
All	All	10437	0	9195	155	0

The all-atom clashscore is defined as the number of clashes found per 1000 atoms (including hydrogen atoms). The all-atom clashscore for this structure is 8.

The worst 5 of 155 close contacts within the same asymmetric unit are listed below, sorted by their clash magnitude.

Atom-1	Atom-2	Interatomic distance (Å)	Clash overlap (Å)
1:D:20:GLN:HE22	1:D:272:LYS:H	1.25	0.84
1:B:70:ALA:HB1	1:B:74:ILE:CD1	2.09	0.81
1:B:70:ALA:HB1	1:B:74:ILE:HD11	1.62	0.79
1:A:20:GLN:HE22	1:A:272:LYS:H	1.26	0.79
1:A:171:LEU:HD12	1:C:171:LEU:HD12	1.64	0.79

There are no symmetry-related clashes.

5.3 Torsion angles [i](#)

5.3.1 Protein backbone [i](#)

In the following table, the Percentiles column shows the percent Ramachandran outliers of the chain as a percentile score with respect to all X-ray entries followed by that with respect to entries of similar resolution.

The Analysed column shows the number of residues for which the backbone conformation was analysed, and the total number of residues.

Mol	Chain	Analysed	Favoured	Allowed	Outliers	Percentiles	
1	A	291/319 (91%)	286 (98%)	5 (2%)	0	100	100
1	B	293/319 (92%)	287 (98%)	6 (2%)	0	100	100
1	C	292/319 (92%)	287 (98%)	5 (2%)	0	100	100
1	D	294/319 (92%)	288 (98%)	6 (2%)	0	100	100
All	All	1170/1276 (92%)	1148 (98%)	22 (2%)	0	100	100

There are no Ramachandran outliers to report.

5.3.2 Protein sidechains ⓘ

In the following table, the Percentiles column shows the percent sidechain outliers of the chain as a percentile score with respect to all X-ray entries followed by that with respect to entries of similar resolution.

The Analysed column shows the number of residues for which the sidechain conformation was analysed, and the total number of residues.

Mol	Chain	Analysed	Rotameric	Outliers	Percentiles	
1	A	242/263 (92%)	240 (99%)	2 (1%)	81	76
1	B	243/263 (92%)	240 (99%)	3 (1%)	71	62
1	C	243/263 (92%)	242 (100%)	1 (0%)	91	89
1	D	244/263 (93%)	244 (100%)	0	100	100
All	All	972/1052 (92%)	966 (99%)	6 (1%)	86	83

5 of 6 residues with a non-rotameric sidechain are listed below:

Mol	Chain	Res	Type
1	B	74	ILE
1	C	166	GLN
1	B	97	ARG
1	A	218	GLN
1	B	166	GLN

Some sidechains can be flipped to improve hydrogen bonding and reduce clashes. 5 of 28 such sidechains are listed below:

Mol	Chain	Res	Type
1	B	173	GLN
1	C	19	GLN
1	D	290	GLN

Continued on next page...

Continued from previous page...

Mol	Chain	Res	Type
1	B	290	GLN
1	C	18	GLN

5.3.3 RNA ⓘ

There are no RNA molecules in this entry.

5.4 Non-standard residues in protein, DNA, RNA chains ⓘ

There are no non-standard protein/DNA/RNA residues in this entry.

5.5 Carbohydrates ⓘ

There are no monosaccharides in this entry.

5.6 Ligand geometry ⓘ

12 ligands are modelled in this entry.

In the following table, the Counts columns list the number of bonds (or angles) for which Mogul statistics could be retrieved, the number of bonds (or angles) that are observed in the model and the number of bonds (or angles) that are defined in the Chemical Component Dictionary. The Link column lists molecule types, if any, to which the group is linked. The Z score for a bond length (or angle) is the number of standard deviations the observed value is removed from the expected value. A bond length (or angle) with $|Z| > 2$ is considered an outlier worth inspection. RMSZ is the root-mean-square of all Z scores of the bond lengths (or angles).

Mol	Type	Chain	Res	Link	Bond lengths			Bond angles		
					Counts	RMSZ	$\# Z > 2$	Counts	RMSZ	$\# Z > 2$
2	LAI	D	1553	-	8,9,9	0.84	0	10,11,11	2.44	4 (40%)
3	SO4	A	1561	-	4,4,4	0.23	0	6,6,6	0.06	0
3	SO4	D	1559	-	4,4,4	0.26	0	6,6,6	0.08	0
3	SO4	C	1560	-	4,4,4	0.24	0	6,6,6	0.10	0
2	LAI	A	1550	-	8,9,9	0.72	0	10,11,11	0.77	0
3	SO4	D	1555	-	4,4,4	0.27	0	6,6,6	0.09	0
3	SO4	B	1558	-	4,4,4	0.26	0	6,6,6	0.06	0
3	SO4	C	1557	-	4,4,4	0.29	0	6,6,6	0.09	0
2	LAI	B	1551	-	8,9,9	0.83	0	10,11,11	2.54	3 (30%)
3	SO4	A	1554	-	4,4,4	0.25	0	6,6,6	0.07	0
3	SO4	B	1556	-	4,4,4	0.23	0	6,6,6	0.06	0

Mol	Type	Chain	Res	Link	Bond lengths			Bond angles		
					Counts	RMSZ	# Z > 2	Counts	RMSZ	# Z > 2
2	LAI	C	1552	-	8,9,9	2.51	2 (25%)	10,11,11	3.53	3 (30%)

In the following table, the Chirals column lists the number of chiral outliers, the number of chiral centers analysed, the number of these observed in the model and the number defined in the Chemical Component Dictionary. Similar counts are reported in the Torsion and Rings columns. '-' means no outliers of that kind were identified.

Mol	Type	Chain	Res	Link	Chirals	Torsions	Rings
2	LAI	D	1553	-	-	1/10/12/12	-
2	LAI	A	1550	-	-	0/10/12/12	-
2	LAI	B	1551	-	-	0/10/12/12	-
2	LAI	C	1552	-	-	2/10/12/12	-

All (2) bond length outliers are listed below:

Mol	Chain	Res	Type	Atoms	Z	Observed(Å)	Ideal(Å)
2	C	1552	LAI	C5-C4	6.07	1.68	1.52
2	C	1552	LAI	O4-C4	3.03	1.49	1.43

The worst 5 of 10 bond angle outliers are listed below:

Mol	Chain	Res	Type	Atoms	Z	Observed(°)	Ideal(°)
2	C	1552	LAI	O3-C3-C2	9.34	126.29	109.17
2	B	1551	LAI	C5-C4-C3	6.04	125.51	112.41
2	D	1553	LAI	C3-C2-C1	5.59	128.70	111.10
2	C	1552	LAI	C4-C3-C2	-3.97	102.51	112.97
2	D	1553	LAI	O2-C2-C3	-3.54	101.06	109.46

There are no chirality outliers.

All (3) torsion outliers are listed below:

Mol	Chain	Res	Type	Atoms
2	D	1553	LAI	O4-C4-C5-O5
2	C	1552	LAI	O4-C4-C5-O5
2	C	1552	LAI	C3-C4-C5-O5

There are no ring outliers.

2 monomers are involved in 2 short contacts:

Mol	Chain	Res	Type	Clashes	Symm-Clashes
2	B	1551	LAI	1	0
2	C	1552	LAI	1	0

5.7 Other polymers [i](#)

There are no such residues in this entry.

5.8 Polymer linkage issues [i](#)

There are no chain breaks in this entry.

6 Fit of model and data ⓘ

6.1 Protein, DNA and RNA chains ⓘ

In the following table, the column labelled ‘#RSRZ> 2’ contains the number (and percentage) of RSRZ outliers, followed by percent RSRZ outliers for the chain as percentile scores relative to all X-ray entries and entries of similar resolution. The OWAB column contains the minimum, median, 95th percentile and maximum values of the occupancy-weighted average B-factor per residue. The column labelled ‘Q< 0.9’ lists the number of (and percentage) of residues with an average occupancy less than 0.9.

Mol	Chain	Analysed	<RSRZ>	#RSRZ>2	OWAB(Å ²)	Q<0.9
1	A	293/319 (91%)	-0.19	8 (2%) 54 53	19, 26, 41, 76	0
1	B	295/319 (92%)	-0.12	6 (2%) 65 64	20, 28, 46, 77	0
1	C	294/319 (92%)	0.09	12 (4%) 37 35	23, 31, 49, 79	0
1	D	296/319 (92%)	-0.25	7 (2%) 59 57	18, 25, 43, 75	0
All	All	1178/1276 (92%)	-0.12	33 (2%) 53 52	18, 28, 46, 79	0

The worst 5 of 33 RSRZ outliers are listed below:

Mol	Chain	Res	Type	RSRZ
1	C	3	THR	7.2
1	B	3	THR	7.1
1	B	2	ALA	6.3
1	A	296	ARG	5.7
1	D	1	MET	5.2

6.2 Non-standard residues in protein, DNA, RNA chains ⓘ

There are no non-standard protein/DNA/RNA residues in this entry.

6.3 Carbohydrates ⓘ

There are no monosaccharides in this entry.

6.4 Ligands ⓘ

In the following table, the Atoms column lists the number of modelled atoms in the group and the number defined in the chemical component dictionary. The B-factors column lists the minimum, median, 95th percentile and maximum values of B factors of atoms in the group. The column labelled ‘Q< 0.9’ lists the number of atoms with occupancy less than 0.9.

Mol	Type	Chain	Res	Atoms	RSCC	RSR	B-factors(\AA^2)	Q<0.9
2	LAI	B	1551	10/10	0.51	0.19	51,53,53,55	0
2	LAI	D	1553	10/10	0.56	0.22	50,54,55,55	0
2	LAI	C	1552	10/10	0.58	0.22	58,60,62,63	0
2	LAI	A	1550	10/10	0.65	0.21	56,58,59,61	0
3	SO4	D	1559	5/5	0.94	0.14	55,55,57,58	0
3	SO4	C	1560	5/5	0.95	0.17	51,53,54,55	0
3	SO4	A	1561	5/5	0.96	0.16	54,54,56,57	0
3	SO4	B	1558	5/5	0.96	0.16	50,50,53,55	0
3	SO4	D	1555	5/5	0.99	0.06	23,24,25,26	0
3	SO4	A	1554	5/5	0.99	0.08	23,23,24,25	0
3	SO4	C	1557	5/5	0.99	0.05	30,31,32,32	0
3	SO4	B	1556	5/5	1.00	0.04	26,27,29,29	0

6.5 Other polymers [i](#)

There are no such residues in this entry.