



## Full wwPDB EM Validation Report ⓘ

Nov 15, 2022 – 01:08 PM JST

PDB ID : 6LBA  
EMDB ID : EMD-0868  
Title : Cryo-EM structure of the AtMLKL2 tetramer  
Authors : Lisa, M.; Huang, M.; Zhang, X.; Ryohei, T.N.; Leila, B.K.; Isabel, M.L.S.;  
Florence, J.; Viera, K.; Dmitry, L.; Jane, E.P.; James, M.M.; Kay, H.; Paul,  
S.L.; Chai, J.; Takaki, M.  
Deposited on : 2019-11-13  
Resolution : 4.10 Å(reported)

This is a Full wwPDB EM Validation Report for a publicly released PDB entry.

We welcome your comments at [validation@mail.wwpdb.org](mailto:validation@mail.wwpdb.org)

A user guide is available at

<https://www.wwpdb.org/validation/2017/EMValidationReportHelp>  
with specific help available everywhere you see the ⓘ symbol.

The types of validation reports are described at

<http://www.wwpdb.org/validation/2017/FAQs#types>.

---

The following versions of software and data (see [references ⓘ](#)) were used in the production of this report:

EMDB validation analysis : 0.0.1.dev43  
MolProbity : 4.02b-467  
Percentile statistics : 20191225.v01 (using entries in the PDB archive December 25th 2019)  
MapQ : 1.9.9  
Ideal geometry (proteins) : Engh & Huber (2001)  
Ideal geometry (DNA, RNA) : Parkinson et al. (1996)  
Validation Pipeline (wwPDB-VP) : 2.31.2

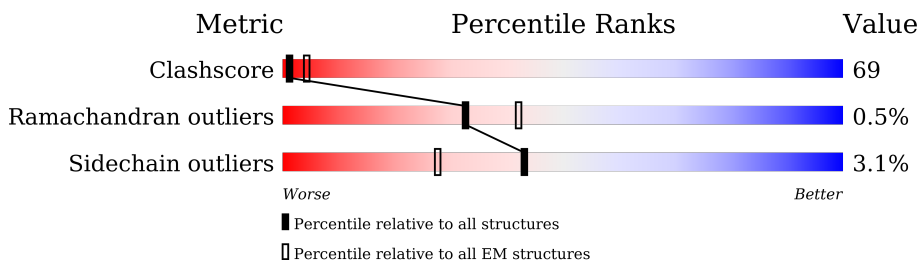
# 1 Overall quality at a glance

The following experimental techniques were used to determine the structure:

*ELECTRON MICROSCOPY*

The reported resolution of this entry is 4.10 Å.

Percentile scores (ranging between 0-100) for global validation metrics of the entry are shown in the following graphic. The table shows the number of entries on which the scores are based.



Metric	Whole archive (#Entries)	EM structures (#Entries)
Clashscore	158937	4297
Ramachandran outliers	154571	4023
Sidechain outliers	154315	3826

The table below summarises the geometric issues observed across the polymeric chains and their fit to the map. The red, orange, yellow and green segments of the bar indicate the fraction of residues that contain outliers for  $\geq 3$ , 2, 1 and 0 types of geometric quality criteria respectively. A grey segment represents the fraction of residues that are not modelled. The numeric value for each fraction is indicated below the corresponding segment, with a dot representing fractions  $\leq 5\%$ . The upper red bar (where present) indicates the fraction of residues that have poor fit to the EM map (all-atom inclusion  $< 40\%$ ). The numeric value is given above the bar.

Mol	Chain	Length	Quality of chain
1	A	572	
1	B	572	
1	C	572	
1	D	572	

## 2 Entry composition

There is only 1 type of molecule in this entry. The entry contains 14992 atoms, of which 0 are hydrogens and 0 are deuteriums.

In the tables below, the AltConf column contains the number of residues with at least one atom in alternate conformation and the Trace column contains the number of residues modelled with at most 2 atoms.

- Molecule 1 is a protein called Protein kinase family protein.

Mol	Chain	Residues	Atoms					AltConf	Trace
1	A	466	Total	C	N	O	S	0	0
			3748	2414	656	653	25		
1	C	466	Total	C	N	O	S	0	0
			3748	2414	656	653	25		
1	B	466	Total	C	N	O	S	0	0
			3748	2414	656	653	25		
1	D	466	Total	C	N	O	S	0	0
			3748	2414	656	653	25		

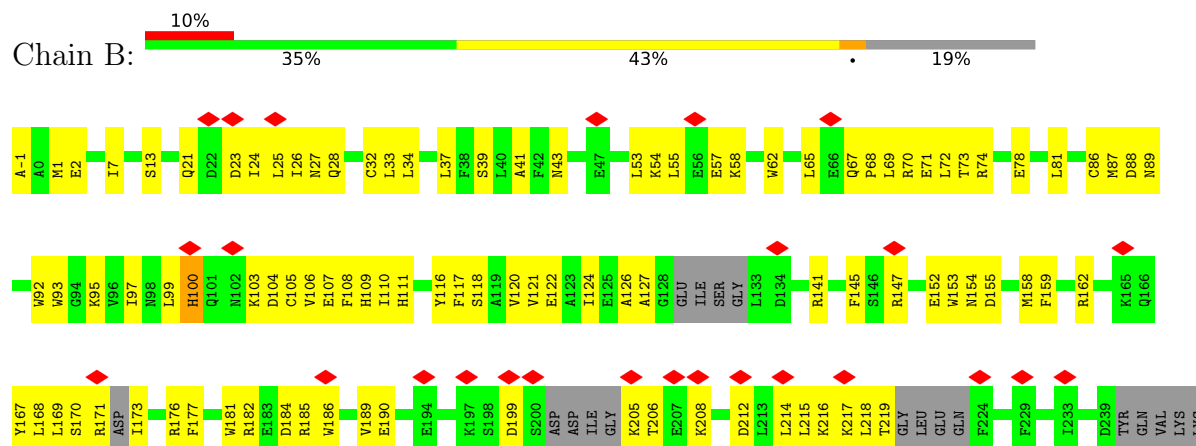
There are 20 discrepancies between the modelled and reference sequences:

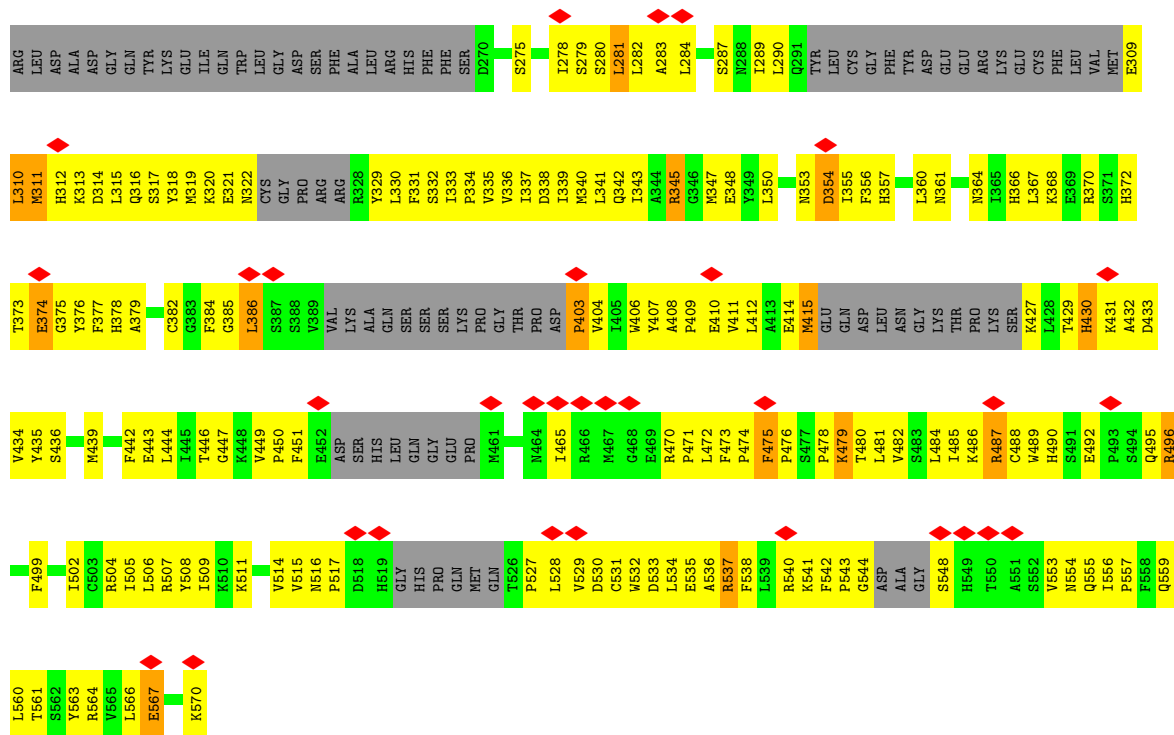
Chain	Residue	Modelled	Actual	Comment	Reference
A	-1	ALA	-	expression tag	UNP Q9FGG5
A	0	ALA	-	expression tag	UNP Q9FGG5
A	73	THR	TYR	conflict	UNP Q9FGG5
A	480	THR	TYR	conflict	UNP Q9FGG5
A	561	THR	TYR	conflict	UNP Q9FGG5
C	-1	ALA	-	expression tag	UNP Q9FGG5
C	0	ALA	-	expression tag	UNP Q9FGG5
C	73	THR	TYR	conflict	UNP Q9FGG5
C	480	THR	TYR	conflict	UNP Q9FGG5
C	561	THR	TYR	conflict	UNP Q9FGG5
B	-1	ALA	-	expression tag	UNP Q9FGG5
B	0	ALA	-	expression tag	UNP Q9FGG5
B	73	THR	TYR	conflict	UNP Q9FGG5
B	480	THR	TYR	conflict	UNP Q9FGG5
B	561	THR	TYR	conflict	UNP Q9FGG5
D	-1	ALA	-	expression tag	UNP Q9FGG5
D	0	ALA	-	expression tag	UNP Q9FGG5
D	73	THR	TYR	conflict	UNP Q9FGG5
D	480	THR	TYR	conflict	UNP Q9FGG5
D	561	THR	TYR	conflict	UNP Q9FGG5



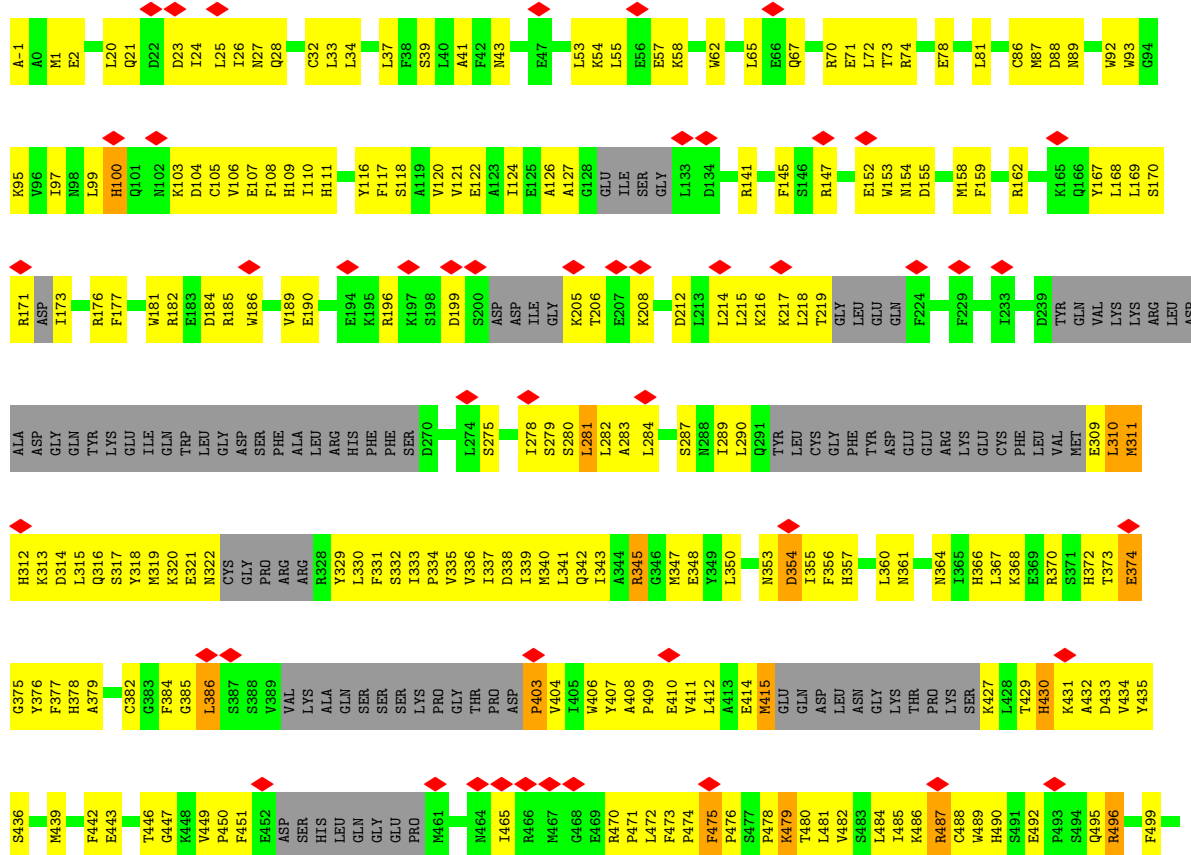


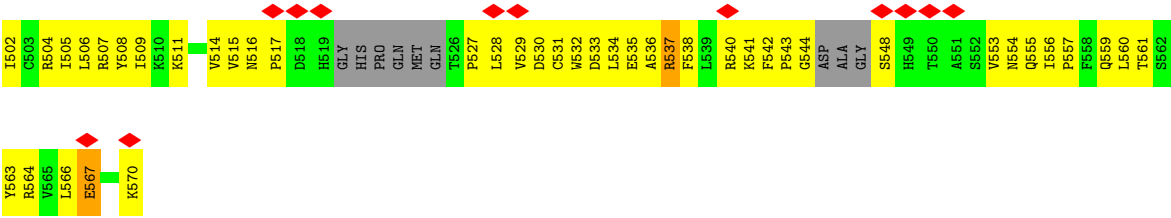
• Molecule 1: Protein kinase family protein





• Molecule 1: Protein kinase family protein





## 4 Experimental information

Property	Value	Source
EM reconstruction method	SINGLE PARTICLE	Depositor
Imposed symmetry	POINT, Not provided	
Number of particles used	1527009	Depositor
Resolution determination method	FSC 0.143 CUT-OFF	Depositor
CTF correction method	NONE	Depositor
Microscope	FEI TITAN KRIOS	Depositor
Voltage (kV)	300	Depositor
Electron dose ( $e^-/\text{\AA}^2$ )	1.5625	Depositor
Minimum defocus (nm)	Not provided	
Maximum defocus (nm)	Not provided	
Magnification	Not provided	
Image detector	GATAN K2 SUMMIT (4k x 4k)	Depositor
Maximum map value	0.105	Depositor
Minimum map value	-0.065	Depositor
Average map value	0.000	Depositor
Map value standard deviation	0.004	Depositor
Recommended contour level	0.026	Depositor
Map size ( $\text{\AA}$ )	261.308, 261.308, 261.308	wwPDB
Map dimensions	200, 200, 200	wwPDB
Map angles ( $^\circ$ )	90.0, 90.0, 90.0	wwPDB
Pixel spacing ( $\text{\AA}$ )	1.30654, 1.30654, 1.30654	Depositor



## 5 Model quality

### 5.1 Standard geometry

The Z score for a bond length (or angle) is the number of standard deviations the observed value is removed from the expected value. A bond length (or angle) with  $|Z| > 5$  is considered an outlier worth inspection. RMSZ is the root-mean-square of all Z scores of the bond lengths (or angles).

Mol	Chain	Bond lengths		Bond angles	
		RMSZ	$\# Z  > 5$	RMSZ	$\# Z  > 5$
1	A	0.31	0/3830	0.52	3/5160 (0.1%)
1	B	0.31	0/3830	0.52	3/5160 (0.1%)
1	C	0.31	0/3830	0.52	3/5160 (0.1%)
1	D	0.31	0/3830	0.52	3/5160 (0.1%)
All	All	0.31	0/15320	0.52	12/20640 (0.1%)

Chiral center outliers are detected by calculating the chiral volume of a chiral center and verifying if the center is modelled as a planar moiety or with the opposite hand. A planarity outlier is detected by checking planarity of atoms in a peptide group, atoms in a mainchain group or atoms of a sidechain that are expected to be planar.

Mol	Chain	#Chirality outliers	#Planarity outliers
1	A	0	1
1	B	0	1
1	C	0	1
1	D	0	1
All	All	0	4

There are no bond length outliers.

All (12) bond angle outliers are listed below:

Mol	Chain	Res	Type	Atoms	Z	Observed(°)	Ideal(°)
1	B	403	PRO	CA-N-CD	-8.96	98.96	111.50
1	C	403	PRO	CA-N-CD	-8.95	98.97	111.50
1	A	403	PRO	CA-N-CD	-8.94	98.98	111.50
1	D	403	PRO	CA-N-CD	-8.93	99.00	111.50
1	C	354	ASP	CB-CG-OD2	5.28	123.06	118.30
1	A	354	ASP	CB-CG-OD2	5.22	123.00	118.30
1	C	533	ASP	CB-CG-OD2	5.22	123.00	118.30
1	B	354	ASP	CB-CG-OD2	5.22	123.00	118.30
1	B	533	ASP	CB-CG-OD2	5.21	122.99	118.30
1	D	354	ASP	CB-CG-OD2	5.21	122.99	118.30

*Continued on next page...*

*Continued from previous page...*

Mol	Chain	Res	Type	Atoms	Z	Observed(°)	Ideal(°)
1	A	533	ASP	CB-CG-OD2	5.20	122.98	118.30
1	D	533	ASP	CB-CG-OD2	5.14	122.93	118.30

There are no chirality outliers.

All (4) planarity outliers are listed below:

Mol	Chain	Res	Type	Group
1	A	100	HIS	Peptide
1	B	100	HIS	Peptide
1	C	100	HIS	Peptide
1	D	100	HIS	Peptide

## 5.2 Too-close contacts [i](#)

In the following table, the Non-H and H(model) columns list the number of non-hydrogen atoms and hydrogen atoms in the chain respectively. The H(added) column lists the number of hydrogen atoms added and optimized by MolProbity. The Clashes column lists the number of clashes within the asymmetric unit, whereas Symm-Clashes lists symmetry-related clashes.

Mol	Chain	Non-H	H(model)	H(added)	Clashes	Symm-Clashes
1	A	3748	0	3653	525	0
1	B	3748	0	3653	521	0
1	C	3748	0	3653	508	0
1	D	3748	0	3653	509	0
All	All	14992	0	14612	2047	0

The all-atom clashscore is defined as the number of clashes found per 1000 atoms (including hydrogen atoms). The all-atom clashscore for this structure is 69.

All (2047) close contacts within the same asymmetric unit are listed below, sorted by their clash magnitude.

Atom-1	Atom-2	Interatomic distance (Å)	Clash overlap (Å)
1:B:470:ARG:HB2	1:B:489:TRP:CZ2	1.47	1.48
1:A:470:ARG:HB2	1:A:489:TRP:CZ2	1.47	1.48
1:C:470:ARG:HB2	1:C:489:TRP:CZ2	1.47	1.46
1:D:470:ARG:HB2	1:D:489:TRP:CZ2	1.47	1.46
1:D:411:VAL:HG12	1:D:427:LYS:CB	1.53	1.38
1:C:411:VAL:HG12	1:C:427:LYS:CB	1.53	1.38
1:C:170:SER:HB3	1:C:173:ILE:N	1.39	1.38

*Continued on next page...*

*Continued from previous page...*

Atom-1	Atom-2	Interatomic distance (Å)	Clash overlap (Å)
1:D:170:SER:HB3	1:D:173:ILE:N	1.39	1.38
1:B:411:VAL:HG12	1:B:427:LYS:CB	1.53	1.37
1:A:411:VAL:HG12	1:A:427:LYS:CB	1.53	1.36
1:C:118:SER:CB	1:C:560:LEU:HD23	1.58	1.34
1:D:118:SER:CB	1:D:560:LEU:HD23	1.58	1.34
1:A:118:SER:CB	1:A:560:LEU:HD23	1.58	1.33
1:B:118:SER:CB	1:B:560:LEU:HD23	1.58	1.33
1:C:470:ARG:HB2	1:C:489:TRP:CE2	1.65	1.32
1:D:470:ARG:HB2	1:D:489:TRP:CE2	1.65	1.32
1:A:170:SER:HB3	1:A:173:ILE:N	1.39	1.31
1:B:170:SER:HB3	1:B:173:ILE:N	1.39	1.31
1:B:470:ARG:HB2	1:B:489:TRP:CE2	1.65	1.31
1:A:470:ARG:HB2	1:A:489:TRP:CE2	1.65	1.30
1:C:275:SER:O	1:C:278:ILE:HG22	1.11	1.28
1:D:275:SER:O	1:D:278:ILE:HG22	1.11	1.28
1:C:118:SER:CB	1:C:560:LEU:CD2	2.13	1.26
1:D:118:SER:CB	1:D:560:LEU:CD2	2.13	1.26
1:A:118:SER:CB	1:A:560:LEU:CD2	2.13	1.25
1:C:470:ARG:HD2	1:C:489:TRP:CD2	1.71	1.25
1:B:118:SER:CB	1:B:560:LEU:CD2	2.13	1.25
1:D:470:ARG:HD2	1:D:489:TRP:CD2	1.71	1.25
1:A:470:ARG:HD2	1:A:489:TRP:CD2	1.71	1.25
1:B:470:ARG:HD2	1:B:489:TRP:CD2	1.71	1.24
1:B:275:SER:O	1:B:278:ILE:HG22	1.11	1.23
1:D:290:LEU:HD11	1:D:309:GLU:O	1.38	1.23
1:C:290:LEU:HD11	1:C:309:GLU:O	1.38	1.23
1:A:275:SER:O	1:A:278:ILE:HG22	1.11	1.22
1:C:290:LEU:HD23	1:C:382:CYS:SG	1.80	1.21
1:D:290:LEU:HD23	1:D:382:CYS:SG	1.80	1.21
1:A:290:LEU:HD23	1:A:382:CYS:SG	1.80	1.21
1:B:290:LEU:HD23	1:B:382:CYS:SG	1.80	1.21
1:C:538:PHE:O	1:C:543:PRO:HD3	1.40	1.20
1:D:538:PHE:O	1:D:543:PRO:HD3	1.40	1.20
1:B:118:SER:HB2	1:B:560:LEU:CD2	1.72	1.19
1:A:118:SER:HB2	1:A:560:LEU:CD2	1.72	1.19
1:A:538:PHE:O	1:A:543:PRO:HD3	1.40	1.19
1:B:538:PHE:O	1:B:543:PRO:HD3	1.40	1.19
1:A:290:LEU:HD11	1:A:309:GLU:O	1.38	1.18
1:B:290:LEU:HD11	1:B:309:GLU:O	1.38	1.18
1:A:356:PHE:HE1	1:A:430:HIS:CB	1.56	1.18
1:B:356:PHE:HE1	1:B:430:HIS:CB	1.56	1.18

*Continued on next page...*

*Continued from previous page...*

Atom-1	Atom-2	Interatomic distance (Å)	Clash overlap (Å)
1:D:356:PHE:HE1	1:D:430:HIS:CB	1.56	1.18
1:C:356:PHE:HE1	1:C:430:HIS:CB	1.56	1.18
1:B:290:LEU:HD11	1:B:309:GLU:C	1.63	1.18
1:A:290:LEU:HD11	1:A:309:GLU:C	1.63	1.17
1:C:310:LEU:HD22	1:C:311:MET:N	1.59	1.17
1:D:310:LEU:HD22	1:D:311:MET:N	1.59	1.17
1:C:290:LEU:HD11	1:C:309:GLU:C	1.63	1.17
1:D:290:LEU:HD11	1:D:309:GLU:C	1.63	1.17
1:A:471:PRO:HD2	1:A:489:TRP:CZ2	1.80	1.17
1:B:471:PRO:HD2	1:B:489:TRP:CZ2	1.80	1.16
1:A:310:LEU:HD22	1:A:311:MET:N	1.59	1.16
1:C:53:LEU:HD23	1:C:126:ALA:HB1	1.24	1.16
1:B:431:LYS:O	1:B:434:VAL:HG12	1.45	1.16
1:A:431:LYS:O	1:A:434:VAL:HG12	1.45	1.16
1:B:310:LEU:HD22	1:B:311:MET:N	1.59	1.16
1:A:408:ALA:HA	1:A:435:TYR:CD2	1.81	1.15
1:C:312:HIS:HD2	1:C:368:LYS:CG	1.59	1.15
1:B:408:ALA:HA	1:B:435:TYR:CD2	1.81	1.15
1:D:312:HIS:HD2	1:D:368:LYS:CG	1.59	1.15
1:C:408:ALA:HA	1:C:435:TYR:CD2	1.81	1.15
1:D:53:LEU:HD23	1:D:126:ALA:HB1	1.24	1.15
1:C:356:PHE:HE1	1:C:430:HIS:HB2	1.01	1.15
1:C:118:SER:HB2	1:C:560:LEU:CD2	1.72	1.15
1:D:471:PRO:HD2	1:D:489:TRP:CZ2	1.79	1.15
1:D:118:SER:HB2	1:D:560:LEU:CD2	1.72	1.14
1:D:408:ALA:HA	1:D:435:TYR:CD2	1.81	1.14
1:C:431:LYS:O	1:C:434:VAL:HG12	1.45	1.14
1:C:471:PRO:HD2	1:C:489:TRP:CZ2	1.80	1.14
1:B:284:LEU:HD22	1:B:353:ASN:HD22	1.08	1.14
1:D:431:LYS:O	1:D:434:VAL:HG12	1.45	1.14
1:C:284:LEU:HD22	1:C:353:ASN:HD22	1.09	1.14
1:D:356:PHE:HE1	1:D:430:HIS:HB2	1.01	1.14
1:A:284:LEU:HD22	1:A:353:ASN:HD22	1.09	1.14
1:D:284:LEU:HD22	1:D:353:ASN:HD22	1.09	1.14
1:B:312:HIS:HD2	1:B:368:LYS:CG	1.59	1.13
1:A:312:HIS:HD2	1:A:368:LYS:CG	1.59	1.13
1:C:290:LEU:HD22	1:C:311:MET:HG3	1.18	1.13
1:D:290:LEU:HD22	1:D:311:MET:HG3	1.18	1.13
1:A:442:PHE:HE1	1:A:485:ILE:HB	1.07	1.13
1:B:442:PHE:HE1	1:B:485:ILE:HB	1.07	1.12
1:A:471:PRO:HD2	1:A:489:TRP:HZ2	0.96	1.12

*Continued on next page...*

*Continued from previous page...*

Atom-1	Atom-2	Interatomic distance (Å)	Clash overlap (Å)
1:B:471:PRO:HD2	1:B:489:TRP:HZ2	0.96	1.12
1:C:312:HIS:HD2	1:C:368:LYS:HG3	1.06	1.12
1:B:312:HIS:HD2	1:B:368:LYS:HG3	1.06	1.12
1:A:170:SER:CB	1:A:173:ILE:N	2.12	1.11
1:C:170:SER:CB	1:C:173:ILE:N	2.12	1.11
1:C:284:LEU:CD2	1:C:353:ASN:HD22	1.62	1.11
1:A:312:HIS:HD2	1:A:368:LYS:HG3	1.06	1.11
1:B:170:SER:CB	1:B:173:ILE:N	2.12	1.11
1:D:170:SER:CB	1:D:173:ILE:N	2.12	1.11
1:D:442:PHE:HE1	1:D:485:ILE:HB	1.07	1.11
1:C:442:PHE:HE1	1:C:485:ILE:HB	1.07	1.11
1:B:284:LEU:CD2	1:B:353:ASN:HD22	1.62	1.11
1:D:284:LEU:CD2	1:D:353:ASN:HD22	1.62	1.11
1:D:312:HIS:HD2	1:D:368:LYS:HG3	1.06	1.11
1:A:284:LEU:CD2	1:A:353:ASN:HD22	1.62	1.11
1:A:356:PHE:HE1	1:A:430:HIS:HB2	1.01	1.10
1:B:332:SER:OG	1:B:334:PRO:HG2	1.51	1.10
1:B:356:PHE:HE1	1:B:430:HIS:HB2	1.01	1.10
1:A:332:SER:OG	1:A:334:PRO:HG2	1.51	1.10
1:A:53:LEU:HD23	1:A:126:ALA:HB1	1.24	1.10
1:A:53:LEU:CD2	1:A:126:ALA:HB1	1.82	1.10
1:C:332:SER:OG	1:C:334:PRO:HG2	1.51	1.10
1:B:53:LEU:CD2	1:B:126:ALA:HB1	1.82	1.10
1:C:311:MET:HB3	1:C:366:HIS:HB3	1.34	1.09
1:D:332:SER:OG	1:D:334:PRO:HG2	1.51	1.09
1:B:53:LEU:HD23	1:B:126:ALA:HB1	1.24	1.09
1:B:290:LEU:HD22	1:B:311:MET:HG3	1.18	1.09
1:D:311:MET:HB3	1:D:366:HIS:HB3	1.34	1.09
1:D:53:LEU:CD2	1:D:126:ALA:HB1	1.82	1.09
1:A:290:LEU:HD22	1:A:311:MET:HG3	1.18	1.09
1:A:470:ARG:CB	1:A:489:TRP:CE2	2.34	1.09
1:C:53:LEU:CD2	1:C:126:ALA:HB1	1.82	1.09
1:B:470:ARG:CB	1:B:489:TRP:CE2	2.34	1.09
1:D:470:ARG:CB	1:D:489:TRP:CE2	2.34	1.08
1:A:356:PHE:CE1	1:A:430:HIS:CB	2.37	1.08
1:C:470:ARG:CB	1:C:489:TRP:CE2	2.34	1.08
1:B:356:PHE:CE1	1:B:430:HIS:CB	2.37	1.08
1:A:411:VAL:CG1	1:A:427:LYS:CB	2.32	1.07
1:C:367:LEU:HD23	1:C:379:ALA:HB2	1.14	1.07
1:C:411:VAL:CG1	1:C:427:LYS:CB	2.32	1.07
1:B:411:VAL:CG1	1:B:427:LYS:CB	2.32	1.07

*Continued on next page...*

*Continued from previous page...*

Atom-1	Atom-2	Interatomic distance (Å)	Clash overlap (Å)
1:D:367:LEU:HD23	1:D:379:ALA:HB2	1.14	1.07
1:D:411:VAL:CG1	1:D:427:LYS:CB	2.32	1.07
1:A:312:HIS:CD2	1:A:368:LYS:HG3	1.89	1.07
1:B:312:HIS:CD2	1:B:368:LYS:HG3	1.89	1.07
1:A:275:SER:O	1:A:278:ILE:CG2	2.03	1.07
1:A:367:LEU:HD23	1:A:379:ALA:HB2	1.14	1.07
1:B:275:SER:O	1:B:278:ILE:CG2	2.03	1.07
1:C:356:PHE:CE1	1:C:430:HIS:CB	2.37	1.06
1:C:275:SER:O	1:C:278:ILE:CG2	2.03	1.06
1:C:471:PRO:HD2	1:C:489:TRP:HZ2	0.96	1.06
1:B:367:LEU:HD23	1:B:379:ALA:HB2	1.14	1.06
1:D:275:SER:O	1:D:278:ILE:CG2	2.03	1.06
1:D:356:PHE:CE1	1:D:430:HIS:CB	2.36	1.06
1:D:471:PRO:HD2	1:D:489:TRP:HZ2	0.96	1.06
1:C:470:ARG:HB3	1:C:489:TRP:NE1	1.71	1.05
1:C:312:HIS:CD2	1:C:368:LYS:HG3	1.89	1.05
1:D:470:ARG:HB3	1:D:489:TRP:NE1	1.71	1.05
1:D:312:HIS:CD2	1:D:368:LYS:HG3	1.89	1.05
1:A:470:ARG:HB3	1:A:489:TRP:NE1	1.71	1.04
1:A:81:LEU:HD11	1:A:372:HIS:CE1	1.93	1.04
1:B:81:LEU:HD11	1:B:372:HIS:CE1	1.93	1.04
1:A:311:MET:HB3	1:A:366:HIS:HB3	1.34	1.03
1:A:356:PHE:CE1	1:A:430:HIS:HB2	1.93	1.03
1:B:356:PHE:CE1	1:B:430:HIS:HB2	1.93	1.03
1:B:470:ARG:HB3	1:B:489:TRP:NE1	1.71	1.03
1:C:81:LEU:HD11	1:C:372:HIS:CE1	1.93	1.03
1:C:470:ARG:CB	1:C:489:TRP:NE1	2.21	1.03
1:D:470:ARG:CB	1:D:489:TRP:NE1	2.21	1.03
1:B:311:MET:HB3	1:B:366:HIS:HB3	1.34	1.03
1:D:81:LEU:HD11	1:D:372:HIS:CE1	1.93	1.03
1:A:490:HIS:O	1:A:496:ARG:HD2	1.59	1.03
1:A:470:ARG:CB	1:A:489:TRP:NE1	2.21	1.02
1:C:81:LEU:HD11	1:C:372:HIS:ND1	1.74	1.02
1:B:470:ARG:CB	1:B:489:TRP:NE1	2.21	1.02
1:B:490:HIS:O	1:B:496:ARG:HD2	1.59	1.02
1:D:81:LEU:HD11	1:D:372:HIS:ND1	1.74	1.02
1:C:312:HIS:CD2	1:C:368:LYS:CG	2.43	1.02
1:B:470:ARG:HD2	1:B:489:TRP:CE2	1.94	1.02
1:D:312:HIS:CD2	1:D:368:LYS:CG	2.43	1.02
1:D:312:HIS:CD2	1:D:368:LYS:HE2	1.94	1.02
1:A:470:ARG:HD2	1:A:489:TRP:CE2	1.94	1.02

*Continued on next page...*

*Continued from previous page...*

Atom-1	Atom-2	Interatomic distance (Å)	Clash overlap (Å)
1:C:312:HIS:CD2	1:C:368:LYS:HE2	1.95	1.02
1:D:470:ARG:HD2	1:D:489:TRP:CE2	1.94	1.02
1:A:312:HIS:CD2	1:A:368:LYS:HE2	1.94	1.01
1:C:470:ARG:HD2	1:C:489:TRP:CE2	1.94	1.01
1:B:312:HIS:CD2	1:B:368:LYS:CG	2.43	1.01
1:B:312:HIS:CD2	1:B:368:LYS:HE2	1.95	1.01
1:A:81:LEU:HD11	1:A:372:HIS:ND1	1.74	1.01
1:C:356:PHE:CE1	1:C:430:HIS:HB2	1.93	1.01
1:B:81:LEU:HD11	1:B:372:HIS:ND1	1.74	1.01
1:D:356:PHE:CE1	1:D:430:HIS:HB2	1.93	1.01
1:D:490:HIS:O	1:D:496:ARG:HD2	1.59	1.01
1:A:412:LEU:HD11	1:A:465:ILE:CG2	1.91	1.01
1:C:470:ARG:CB	1:C:489:TRP:CZ2	2.44	1.01
1:C:490:HIS:O	1:C:496:ARG:HD2	1.59	1.01
1:B:412:LEU:HD11	1:B:465:ILE:CG2	1.91	1.01
1:D:470:ARG:CB	1:D:489:TRP:CZ2	2.44	1.01
1:C:367:LEU:HD23	1:C:379:ALA:CB	1.92	1.00
1:D:367:LEU:HD23	1:D:379:ALA:CB	1.92	1.00
1:D:412:LEU:HD11	1:D:465:ILE:CG2	1.91	1.00
1:C:412:LEU:HD11	1:C:465:ILE:CG2	1.91	1.00
1:A:311:MET:HG2	1:A:366:HIS:CD2	1.98	0.99
1:B:121:VAL:HG11	1:B:564:ARG:HH12	1.27	0.99
1:D:121:VAL:HG11	1:D:564:ARG:HH12	1.27	0.99
1:A:121:VAL:HG11	1:A:564:ARG:HH12	1.27	0.99
1:B:311:MET:HG2	1:B:366:HIS:CD2	1.98	0.99
1:A:67:GLN:HG3	1:A:517:PRO:HB3	1.43	0.99
1:C:312:HIS:CD2	1:C:368:LYS:CD	2.45	0.99
1:D:312:HIS:CD2	1:D:368:LYS:CD	2.45	0.99
1:A:470:ARG:CB	1:A:489:TRP:CZ2	2.44	0.99
1:C:67:GLN:HG3	1:C:517:PRO:HB3	1.43	0.99
1:D:67:GLN:HG3	1:D:517:PRO:HB3	1.43	0.99
1:A:367:LEU:HD23	1:A:379:ALA:CB	1.92	0.99
1:C:121:VAL:HG11	1:C:564:ARG:HH12	1.27	0.99
1:B:67:GLN:HG3	1:B:517:PRO:HB3	1.43	0.99
1:B:367:LEU:HD23	1:B:379:ALA:CB	1.92	0.99
1:B:470:ARG:CB	1:B:489:TRP:CZ2	2.44	0.99
1:D:111:HIS:CE1	1:D:345:ARG:CD	2.46	0.99
1:C:111:HIS:CE1	1:C:345:ARG:CD	2.46	0.98
1:A:312:HIS:CD2	1:A:368:LYS:CG	2.43	0.98
1:B:313:LYS:HD2	1:B:318:TYR:CE2	1.99	0.98
1:A:312:HIS:CD2	1:A:368:LYS:CD	2.45	0.98

*Continued on next page...*



*Continued from previous page...*

Atom-1	Atom-2	Interatomic distance (Å)	Clash overlap (Å)
1:A:313:LYS:HD2	1:A:318:TYR:CE2	1.99	0.98
1:B:312:HIS:CD2	1:B:368:LYS:CD	2.45	0.98
1:A:470:ARG:HD3	1:A:489:TRP:CD1	1.98	0.98
1:B:470:ARG:HD3	1:B:489:TRP:CD1	1.98	0.98
1:C:118:SER:OG	1:C:560:LEU:HD23	1.62	0.98
1:C:311:MET:HG2	1:C:366:HIS:CD2	1.98	0.98
1:B:111:HIS:CE1	1:B:345:ARG:CD	2.46	0.98
1:B:470:ARG:HB3	1:B:489:TRP:HE1	1.28	0.98
1:A:111:HIS:CE1	1:A:345:ARG:CD	2.46	0.98
1:A:470:ARG:HB3	1:A:489:TRP:HE1	1.28	0.98
1:D:311:MET:HG2	1:D:366:HIS:CD2	1.98	0.98
1:B:412:LEU:HD11	1:B:465:ILE:HG22	1.46	0.98
1:D:118:SER:OG	1:D:560:LEU:HD23	1.62	0.98
1:A:412:LEU:HD11	1:A:465:ILE:HG22	1.46	0.98
1:C:313:LYS:HD2	1:C:318:TYR:CE2	1.99	0.97
1:B:367:LEU:CD2	1:B:379:ALA:HB2	1.94	0.97
1:D:313:LYS:HD2	1:D:318:TYR:CE2	1.99	0.97
1:D:470:ARG:HD3	1:D:489:TRP:CD1	1.98	0.97
1:A:118:SER:OG	1:A:560:LEU:HD23	1.62	0.97
1:A:367:LEU:CD2	1:A:379:ALA:HB2	1.94	0.97
1:C:442:PHE:CE1	1:C:485:ILE:HB	2.00	0.97
1:B:118:SER:OG	1:B:560:LEU:HD23	1.62	0.97
1:C:470:ARG:HD3	1:C:489:TRP:CD1	1.98	0.97
1:D:442:PHE:CE1	1:D:485:ILE:HB	2.00	0.97
1:D:367:LEU:CD2	1:D:379:ALA:HB2	1.94	0.97
1:D:118:SER:CB	1:D:560:LEU:HD21	1.95	0.96
1:C:118:SER:CB	1:C:560:LEU:HD21	1.95	0.96
1:C:367:LEU:CD2	1:C:379:ALA:HB2	1.94	0.96
1:A:53:LEU:CD2	1:A:126:ALA:CB	2.44	0.96
1:A:442:PHE:CE1	1:A:485:ILE:HB	2.00	0.96
1:B:442:PHE:CE1	1:B:485:ILE:HB	2.00	0.96
1:B:53:LEU:CD2	1:B:126:ALA:CB	2.44	0.96
1:A:111:HIS:CE1	1:A:345:ARG:HD2	2.01	0.96
1:B:111:HIS:CE1	1:B:345:ARG:HD2	2.01	0.96
1:A:118:SER:CB	1:A:560:LEU:HD21	1.95	0.95
1:B:118:SER:CB	1:B:560:LEU:HD21	1.95	0.95
1:C:370:ARG:HG2	1:C:377:PHE:HA	1.47	0.95
1:A:370:ARG:HG3	1:A:376:TYR:C	1.87	0.95
1:C:53:LEU:CD2	1:C:126:ALA:CB	2.44	0.95
1:B:370:ARG:HG3	1:B:376:TYR:C	1.87	0.95
1:D:370:ARG:HG3	1:D:376:TYR:C	1.87	0.95

*Continued on next page...*



*Continued from previous page...*

Atom-1	Atom-2	Interatomic distance (Å)	Clash overlap (Å)
1:C:370:ARG:HG3	1:C:376:TYR:C	1.87	0.95
1:D:53:LEU:CD2	1:D:126:ALA:CB	2.44	0.95
1:D:370:ARG:HG2	1:D:377:PHE:HA	1.47	0.95
1:D:484:LEU:HD21	1:D:502:ILE:HD11	1.48	0.95
1:C:484:LEU:HD21	1:C:502:ILE:HD11	1.48	0.94
1:A:407:TYR:O	1:A:435:TYR:HE2	1.50	0.94
1:C:412:LEU:HD11	1:C:465:ILE:HG22	1.46	0.94
1:B:407:TYR:O	1:B:435:TYR:HE2	1.50	0.94
1:B:484:LEU:HD21	1:B:502:ILE:HD11	1.48	0.94
1:A:370:ARG:HG2	1:A:377:PHE:HA	1.47	0.94
1:B:332:SER:OG	1:B:334:PRO:CG	2.16	0.94
1:D:412:LEU:HD11	1:D:465:ILE:HG22	1.46	0.94
1:A:332:SER:OG	1:A:334:PRO:CG	2.16	0.94
1:A:484:LEU:HD21	1:A:502:ILE:HD11	1.48	0.94
1:A:313:LYS:HD2	1:A:318:TYR:HE2	1.32	0.94
1:B:313:LYS:HD2	1:B:318:TYR:HE2	1.32	0.94
1:B:370:ARG:HG2	1:B:377:PHE:HA	1.47	0.94
1:D:111:HIS:CE1	1:D:345:ARG:HD2	2.01	0.94
1:C:111:HIS:CE1	1:C:345:ARG:HD2	2.01	0.94
1:D:470:ARG:HB3	1:D:489:TRP:HE1	1.28	0.94
1:C:290:LEU:HD22	1:C:311:MET:CG	1.99	0.94
1:D:290:LEU:HD22	1:D:311:MET:CG	1.99	0.94
1:D:407:TYR:O	1:D:435:TYR:HE2	1.50	0.94
1:A:290:LEU:HD22	1:A:311:MET:CG	1.98	0.93
1:A:360:LEU:O	1:A:361:ASN:OD1	1.86	0.93
1:B:360:LEU:O	1:B:361:ASN:OD1	1.86	0.93
1:C:407:TYR:O	1:C:435:TYR:HE2	1.50	0.93
1:B:290:LEU:HD22	1:B:311:MET:CG	1.99	0.93
1:D:290:LEU:CD2	1:D:382:CYS:SG	2.56	0.93
1:C:290:LEU:CD2	1:C:382:CYS:SG	2.56	0.93
1:C:470:ARG:HB3	1:C:489:TRP:HE1	1.28	0.93
1:A:385:GLY:O	1:A:386:LEU:HB2	1.69	0.93
1:D:332:SER:OG	1:D:334:PRO:CG	2.16	0.93
1:B:385:GLY:O	1:B:386:LEU:HB2	1.69	0.93
1:C:332:SER:OG	1:C:334:PRO:CG	2.16	0.92
1:D:312:HIS:CD2	1:D:368:LYS:CE	2.52	0.92
1:C:312:HIS:CD2	1:C:368:LYS:CE	2.52	0.92
1:A:280:SER:O	1:A:282:LEU:N	2.02	0.92
1:B:280:SER:O	1:B:282:LEU:N	2.02	0.92
1:A:312:HIS:CD2	1:A:368:LYS:CE	2.52	0.92
1:C:360:LEU:O	1:C:361:ASN:OD1	1.86	0.92

*Continued on next page...*

*Continued from previous page...*

Atom-1	Atom-2	Interatomic distance (Å)	Clash overlap (Å)
1:B:312:HIS:CD2	1:B:368:LYS:CE	2.52	0.92
1:A:290:LEU:CD2	1:A:382:CYS:SG	2.56	0.92
1:B:290:LEU:CD2	1:B:382:CYS:SG	2.57	0.92
1:D:360:LEU:O	1:D:361:ASN:OD1	1.86	0.92
1:D:488:CYS:O	1:D:496:ARG:HG2	1.70	0.92
1:A:199:ASP:CB	1:A:208:LYS:HD3	2.00	0.92
1:A:311:MET:HB3	1:A:366:HIS:CB	2.00	0.92
1:C:488:CYS:O	1:C:496:ARG:HG2	1.70	0.92
1:B:199:ASP:CB	1:B:208:LYS:HD3	2.00	0.92
1:B:311:MET:HB3	1:B:366:HIS:CB	2.00	0.92
1:D:280:SER:O	1:D:282:LEU:N	2.02	0.92
1:C:280:SER:O	1:C:282:LEU:N	2.02	0.91
1:A:488:CYS:O	1:A:496:ARG:HG2	1.70	0.91
1:C:370:ARG:HB2	1:C:376:TYR:O	1.70	0.91
1:B:370:ARG:HB2	1:B:376:TYR:O	1.70	0.91
1:B:488:CYS:O	1:B:496:ARG:HG2	1.70	0.91
1:D:370:ARG:HB2	1:D:376:TYR:O	1.71	0.91
1:D:385:GLY:O	1:D:386:LEU:HB2	1.69	0.91
1:A:370:ARG:HB2	1:A:376:TYR:O	1.70	0.91
1:C:385:GLY:O	1:C:386:LEU:HB2	1.69	0.91
1:C:311:MET:HB3	1:C:366:HIS:CB	2.00	0.91
1:D:311:MET:HB3	1:D:366:HIS:CB	2.00	0.91
1:D:412:LEU:O	1:D:415:MET:SD	2.29	0.91
1:C:313:LYS:HD2	1:C:318:TYR:HE2	1.32	0.91
1:C:412:LEU:O	1:C:415:MET:SD	2.29	0.91
1:D:199:ASP:CB	1:D:208:LYS:HD3	2.00	0.91
1:C:199:ASP:CB	1:C:208:LYS:HD3	2.00	0.91
1:A:412:LEU:O	1:A:415:MET:SD	2.29	0.90
1:B:412:LEU:O	1:B:415:MET:SD	2.29	0.90
1:D:313:LYS:HD2	1:D:318:TYR:HE2	1.32	0.90
1:A:290:LEU:CD2	1:A:311:MET:HG3	2.02	0.90
1:A:370:ARG:CG	1:A:376:TYR:O	2.20	0.90
1:B:290:LEU:CD2	1:B:311:MET:HG3	2.02	0.90
1:B:370:ARG:CG	1:B:376:TYR:O	2.20	0.90
1:B:475:PHE:CD2	1:B:476:PRO:HD3	2.06	0.90
1:C:370:ARG:CG	1:C:376:TYR:O	2.20	0.90
1:D:370:ARG:CG	1:D:376:TYR:O	2.20	0.90
1:A:475:PHE:CD2	1:A:476:PRO:HD3	2.07	0.90
1:A:442:PHE:CZ	1:A:489:TRP:CE3	2.60	0.90
1:B:442:PHE:CZ	1:B:489:TRP:CE3	2.60	0.90
1:C:442:PHE:CZ	1:C:489:TRP:CE3	2.60	0.89

*Continued on next page...*

*Continued from previous page...*

Atom-1	Atom-2	Interatomic distance (Å)	Clash overlap (Å)
1:D:442:PHE:CZ	1:D:489:TRP:CE3	2.60	0.89
1:D:311:MET:HE2	1:D:311:MET:H	1.36	0.89
1:C:311:MET:H	1:C:311:MET:HE2	1.36	0.89
1:C:407:TYR:O	1:C:435:TYR:CE2	2.26	0.89
1:D:407:TYR:O	1:D:435:TYR:CE2	2.26	0.89
1:C:475:PHE:CD2	1:C:476:PRO:HD3	2.06	0.88
1:C:290:LEU:HB3	1:C:382:CYS:SG	2.14	0.88
1:B:290:LEU:HB3	1:B:382:CYS:SG	2.14	0.88
1:D:290:LEU:CD2	1:D:311:MET:HG3	2.02	0.88
1:A:290:LEU:HB3	1:A:382:CYS:SG	2.14	0.88
1:D:290:LEU:HB3	1:D:382:CYS:SG	2.14	0.88
1:D:118:SER:HB3	1:D:560:LEU:CD2	2.03	0.88
1:D:475:PHE:CD2	1:D:476:PRO:HD3	2.07	0.88
1:C:290:LEU:CD2	1:C:311:MET:HG3	2.02	0.88
1:C:118:SER:HB3	1:C:560:LEU:CD2	2.03	0.88
1:D:508:TYR:OH	1:D:528:LEU:HD12	1.74	0.87
1:A:370:ARG:CB	1:A:376:TYR:O	2.23	0.87
1:C:508:TYR:OH	1:C:528:LEU:HD12	1.74	0.87
1:B:407:TYR:O	1:B:435:TYR:CE2	2.26	0.87
1:A:407:TYR:O	1:A:435:TYR:CE2	2.26	0.87
1:B:370:ARG:CB	1:B:376:TYR:O	2.23	0.87
1:B:118:SER:HB3	1:B:560:LEU:CD2	2.03	0.87
1:B:508:TYR:OH	1:B:528:LEU:HD12	1.74	0.87
1:A:118:SER:HB3	1:A:560:LEU:CD2	2.03	0.87
1:B:332:SER:CB	1:B:334:PRO:HD2	2.05	0.87
1:A:332:SER:CB	1:A:334:PRO:HD2	2.05	0.87
1:A:479:LYS:NZ	1:A:479:LYS:HB3	1.90	0.87
1:A:508:TYR:OH	1:A:528:LEU:HD12	1.74	0.87
1:C:374:GLU:N	1:C:374:GLU:OE2	2.08	0.87
1:D:374:GLU:N	1:D:374:GLU:OE2	2.08	0.87
1:D:470:ARG:HD2	1:D:489:TRP:CG	2.09	0.87
1:B:479:LYS:NZ	1:B:479:LYS:HB3	1.90	0.86
1:C:284:LEU:CD2	1:C:353:ASN:ND2	2.37	0.86
1:C:321:GLU:OE1	1:C:321:GLU:N	2.08	0.86
1:C:370:ARG:CB	1:C:376:TYR:O	2.23	0.86
1:B:470:ARG:HD2	1:B:489:TRP:CG	2.09	0.86
1:D:284:LEU:CD2	1:D:353:ASN:ND2	2.37	0.86
1:A:284:LEU:CD2	1:A:353:ASN:ND2	2.37	0.86
1:C:470:ARG:HD2	1:C:489:TRP:CG	2.09	0.86
1:B:284:LEU:CD2	1:B:353:ASN:ND2	2.37	0.86
1:A:470:ARG:HD2	1:A:489:TRP:CG	2.09	0.86

*Continued on next page...*

*Continued from previous page...*

Atom-1	Atom-2	Interatomic distance (Å)	Clash overlap (Å)
1:C:479:LYS:NZ	1:C:479:LYS:HB3	1.90	0.86
1:D:321:GLU:OE1	1:D:321:GLU:N	2.08	0.86
1:D:370:ARG:CB	1:D:376:TYR:O	2.23	0.86
1:C:446:THR:HG21	1:C:473:PHE:HD2	1.40	0.86
1:D:446:THR:HG21	1:D:473:PHE:HD2	1.40	0.86
1:C:318:TYR:O	1:C:322:ASN:CG	2.14	0.86
1:A:321:GLU:OE1	1:A:321:GLU:N	2.08	0.86
1:B:446:THR:HG21	1:B:473:PHE:HD2	1.40	0.86
1:D:318:TYR:O	1:D:322:ASN:CG	2.14	0.86
1:D:479:LYS:NZ	1:D:479:LYS:HB3	1.90	0.86
1:B:311:MET:H	1:B:311:MET:HE2	1.40	0.86
1:B:321:GLU:OE1	1:B:321:GLU:N	2.08	0.86
1:A:446:THR:HG21	1:A:473:PHE:HD2	1.40	0.86
1:D:332:SER:CB	1:D:334:PRO:HD2	2.05	0.86
1:C:332:SER:CB	1:C:334:PRO:HD2	2.05	0.86
1:A:199:ASP:HB2	1:A:208:LYS:HD3	1.58	0.85
1:B:199:ASP:HB2	1:B:208:LYS:HD3	1.58	0.85
1:C:312:HIS:HD2	1:C:368:LYS:CD	1.83	0.85
1:C:415:MET:SD	1:C:415:MET:N	2.48	0.85
1:B:370:ARG:CG	1:B:376:TYR:C	2.45	0.85
1:A:370:ARG:CG	1:A:376:TYR:C	2.45	0.85
1:A:374:GLU:N	1:A:374:GLU:OE2	2.08	0.85
1:B:374:GLU:N	1:B:374:GLU:OE2	2.08	0.85
1:D:415:MET:SD	1:D:415:MET:N	2.48	0.85
1:D:312:HIS:HD2	1:D:368:LYS:CD	1.83	0.85
1:C:470:ARG:HB2	1:C:489:TRP:HZ2	1.38	0.85
1:B:318:TYR:O	1:B:322:ASN:CG	2.14	0.85
1:A:318:TYR:O	1:A:322:ASN:CG	2.14	0.85
1:D:370:ARG:CG	1:D:376:TYR:C	2.45	0.84
1:A:118:SER:HB2	1:A:560:LEU:HD21	1.57	0.84
1:D:431:LYS:O	1:D:434:VAL:CG1	2.25	0.84
1:C:370:ARG:CG	1:C:376:TYR:C	2.45	0.84
1:C:431:LYS:O	1:C:434:VAL:CG1	2.25	0.84
1:B:310:LEU:HD22	1:B:311:MET:H	1.41	0.84
1:D:470:ARG:HB2	1:D:489:TRP:HZ2	1.38	0.84
1:A:311:MET:HE2	1:A:311:MET:H	1.41	0.84
1:B:118:SER:HB2	1:B:560:LEU:HD21	1.57	0.84
1:A:310:LEU:HD22	1:A:311:MET:H	1.41	0.84
1:A:488:CYS:O	1:A:496:ARG:CG	2.26	0.84
1:B:284:LEU:HD22	1:B:353:ASN:ND2	1.91	0.84
1:B:470:ARG:CD	1:B:489:TRP:CE2	2.60	0.84

*Continued on next page...*

*Continued from previous page...*

Atom-1	Atom-2	Interatomic distance (Å)	Clash overlap (Å)
1:D:118:SER:HB2	1:D:560:LEU:HD23	1.35	0.84
1:A:431:LYS:O	1:A:434:VAL:CG1	2.25	0.84
1:A:470:ARG:CD	1:A:489:TRP:CE2	2.60	0.84
1:B:488:CYS:O	1:B:496:ARG:CG	2.26	0.84
1:A:284:LEU:HD22	1:A:353:ASN:ND2	1.92	0.84
1:B:431:LYS:O	1:B:434:VAL:CG1	2.25	0.84
1:D:488:CYS:O	1:D:496:ARG:CG	2.26	0.84
1:C:284:LEU:HD22	1:C:353:ASN:ND2	1.92	0.84
1:C:442:PHE:CD1	1:C:473:PHE:HZ	1.96	0.84
1:D:284:LEU:HD22	1:D:353:ASN:ND2	1.92	0.84
1:D:442:PHE:CD1	1:D:473:PHE:HZ	1.96	0.84
1:D:470:ARG:CD	1:D:489:TRP:CE2	2.60	0.84
1:A:336:VAL:HG12	1:A:340:MET:HE2	1.60	0.83
1:C:470:ARG:CD	1:C:489:TRP:CE2	2.60	0.83
1:C:488:CYS:O	1:C:496:ARG:CG	2.26	0.83
1:B:336:VAL:HG12	1:B:340:MET:HE2	1.60	0.83
1:C:118:SER:HB2	1:C:560:LEU:HD23	1.36	0.83
1:C:332:SER:OG	1:C:334:PRO:CD	2.27	0.83
1:A:332:SER:OG	1:A:334:PRO:CD	2.27	0.83
1:B:332:SER:OG	1:B:334:PRO:CD	2.27	0.83
1:D:332:SER:OG	1:D:334:PRO:CD	2.27	0.83
1:D:470:ARG:CD	1:D:489:TRP:CD1	2.61	0.83
1:C:470:ARG:CD	1:C:489:TRP:CD1	2.61	0.83
1:C:199:ASP:HB2	1:C:208:LYS:HD3	1.58	0.83
1:D:199:ASP:HB2	1:D:208:LYS:HD3	1.58	0.83
1:B:370:ARG:HG2	1:B:377:PHE:CA	2.09	0.83
1:B:415:MET:SD	1:B:415:MET:N	2.48	0.83
1:A:312:HIS:HD2	1:A:368:LYS:CD	1.83	0.82
1:A:370:ARG:HG2	1:A:377:PHE:CA	2.09	0.82
1:A:415:MET:SD	1:A:415:MET:N	2.48	0.82
1:B:442:PHE:CD1	1:B:473:PHE:HZ	1.96	0.82
1:A:470:ARG:CD	1:A:489:TRP:CD1	2.61	0.82
1:B:312:HIS:HD2	1:B:368:LYS:CD	1.83	0.82
1:A:442:PHE:CD1	1:A:473:PHE:HZ	1.96	0.82
1:B:470:ARG:CD	1:B:489:TRP:CD1	2.61	0.82
1:B:111:HIS:CE1	1:B:345:ARG:HD3	2.14	0.82
1:A:111:HIS:CE1	1:A:345:ARG:HD3	2.14	0.82
1:D:336:VAL:HG12	1:D:340:MET:HE2	1.61	0.82
1:C:336:VAL:HG12	1:C:340:MET:HE2	1.61	0.82
1:D:370:ARG:HG2	1:D:377:PHE:CA	2.09	0.82
1:C:111:HIS:CE1	1:C:345:ARG:HD3	2.14	0.82

*Continued on next page...*

*Continued from previous page...*

Atom-1	Atom-2	Interatomic distance (Å)	Clash overlap (Å)
1:D:111:HIS:CE1	1:D:345:ARG:HD3	2.14	0.82
1:D:311:MET:CG	1:D:366:HIS:CD2	2.63	0.82
1:C:311:MET:CG	1:C:366:HIS:CD2	2.63	0.82
1:C:370:ARG:HG2	1:C:377:PHE:CA	2.09	0.81
1:D:310:LEU:HD22	1:D:311:MET:H	1.41	0.81
1:C:470:ARG:CD	1:C:489:TRP:CD2	2.62	0.81
1:A:311:MET:CG	1:A:366:HIS:CD2	2.63	0.81
1:C:118:SER:HB3	1:C:560:LEU:HD21	1.61	0.81
1:D:470:ARG:CD	1:D:489:TRP:CD2	2.62	0.81
1:C:310:LEU:HD22	1:C:311:MET:H	1.41	0.81
1:A:446:THR:CG2	1:A:473:PHE:HD2	1.94	0.81
1:B:311:MET:CG	1:B:366:HIS:CD2	2.63	0.81
1:B:446:THR:CG2	1:B:473:PHE:HD2	1.94	0.81
1:B:538:PHE:O	1:B:543:PRO:CD	2.26	0.81
1:D:118:SER:HB3	1:D:560:LEU:HD21	1.61	0.81
1:A:538:PHE:O	1:A:543:PRO:CD	2.26	0.80
1:C:471:PRO:HG2	1:C:489:TRP:HH2	1.45	0.80
1:A:471:PRO:HG2	1:A:489:TRP:HH2	1.45	0.80
1:C:557:PRO:O	1:C:561:THR:HG23	1.81	0.80
1:B:471:PRO:HG2	1:B:489:TRP:HH2	1.45	0.80
1:A:159:PHE:CZ	1:A:561:THR:HG21	2.16	0.80
1:B:515:VAL:C	1:B:516:ASN:HD22	1.84	0.80
1:D:470:ARG:CD	1:D:489:TRP:CG	2.64	0.80
1:D:471:PRO:HG2	1:D:489:TRP:HH2	1.45	0.80
1:D:557:PRO:O	1:D:561:THR:HG23	1.81	0.80
1:A:515:VAL:C	1:A:516:ASN:HD22	1.84	0.80
1:C:470:ARG:CD	1:C:489:TRP:CG	2.65	0.80
1:B:159:PHE:CZ	1:B:561:THR:HG21	2.16	0.80
1:C:472:LEU:HD12	1:C:472:LEU:O	1.82	0.80
1:C:515:VAL:C	1:C:516:ASN:HD22	1.84	0.80
1:D:116:TYR:CE1	1:D:514:VAL:HG21	2.17	0.80
1:D:446:THR:CG2	1:D:473:PHE:HD2	1.94	0.80
1:D:472:LEU:HD12	1:D:472:LEU:O	1.82	0.80
1:D:515:VAL:C	1:D:516:ASN:HD22	1.84	0.80
1:A:290:LEU:CD1	1:A:309:GLU:C	2.47	0.80
1:C:116:TYR:CE1	1:C:514:VAL:HG21	2.17	0.80
1:B:290:LEU:CD1	1:B:309:GLU:C	2.47	0.80
1:C:446:THR:CG2	1:C:473:PHE:HD2	1.94	0.80
1:D:538:PHE:O	1:D:543:PRO:CD	2.26	0.80
1:C:311:MET:HG2	1:C:366:HIS:CG	2.17	0.79
1:C:538:PHE:O	1:C:543:PRO:CD	2.26	0.79

*Continued on next page...*

*Continued from previous page...*

Atom-1	Atom-2	Interatomic distance (Å)	Clash overlap (Å)
1:B:557:PRO:O	1:B:561:THR:HG23	1.81	0.79
1:A:470:ARG:HB2	1:A:489:TRP:HZ2	1.38	0.79
1:A:557:PRO:O	1:A:561:THR:HG23	1.81	0.79
1:D:311:MET:HG2	1:D:366:HIS:CG	2.17	0.79
1:D:505:ILE:HD11	1:D:531:CYS:HB3	1.64	0.79
1:A:116:TYR:CE1	1:A:514:VAL:HG21	2.17	0.79
1:A:470:ARG:CD	1:A:489:TRP:CG	2.64	0.79
1:B:311:MET:HG2	1:B:366:HIS:CG	2.17	0.79
1:A:570:LYS:NZ	1:A:570:LYS:HB2	1.98	0.79
1:C:159:PHE:CZ	1:C:561:THR:HG21	2.16	0.79
1:C:505:ILE:HD11	1:C:531:CYS:HB3	1.64	0.79
1:B:116:TYR:CE1	1:B:514:VAL:HG21	2.17	0.79
1:B:470:ARG:HB2	1:B:489:TRP:HZ2	1.38	0.79
1:B:470:ARG:CD	1:B:489:TRP:CG	2.65	0.79
1:B:570:LYS:HB2	1:B:570:LYS:NZ	1.98	0.79
1:D:159:PHE:CZ	1:D:561:THR:HG21	2.16	0.79
1:A:311:MET:HG2	1:A:366:HIS:CG	2.17	0.79
1:A:118:SER:HB3	1:A:560:LEU:HD21	1.61	0.79
1:D:336:VAL:HG12	1:D:340:MET:CE	2.13	0.79
1:C:336:VAL:HG12	1:C:340:MET:CE	2.13	0.79
1:B:118:SER:HB3	1:B:560:LEU:HD21	1.61	0.79
1:C:208:LYS:HB2	1:C:208:LYS:NZ	1.98	0.79
1:C:290:LEU:CD1	1:C:309:GLU:C	2.47	0.79
1:B:336:VAL:HG12	1:B:340:MET:CE	2.13	0.79
1:B:505:ILE:HD11	1:B:531:CYS:CB	2.13	0.79
1:D:290:LEU:CD1	1:D:309:GLU:C	2.47	0.79
1:A:336:VAL:HG12	1:A:340:MET:CE	2.13	0.78
1:A:505:ILE:HD11	1:A:531:CYS:CB	2.13	0.78
1:D:208:LYS:HB2	1:D:208:LYS:NZ	1.98	0.78
1:A:385:GLY:O	1:A:386:LEU:CB	2.31	0.78
1:B:385:GLY:O	1:B:386:LEU:CB	2.31	0.78
1:C:81:LEU:CD1	1:C:372:HIS:ND1	2.46	0.78
1:A:472:LEU:HD12	1:A:472:LEU:O	1.82	0.78
1:C:408:ALA:HB3	1:C:411:VAL:HG22	1.66	0.78
1:B:81:LEU:CD1	1:B:372:HIS:ND1	2.46	0.78
1:B:472:LEU:HD12	1:B:472:LEU:O	1.82	0.78
1:D:81:LEU:CD1	1:D:372:HIS:ND1	2.46	0.78
1:A:81:LEU:CD1	1:A:372:HIS:ND1	2.46	0.78
1:D:408:ALA:HB3	1:D:411:VAL:HG22	1.66	0.78
1:A:470:ARG:CD	1:A:489:TRP:CD2	2.62	0.78
1:C:414:GLU:OE1	1:C:414:GLU:N	2.16	0.78

*Continued on next page...*



*Continued from previous page...*

Atom-1	Atom-2	Interatomic distance (Å)	Clash overlap (Å)
1:D:414:GLU:OE1	1:D:414:GLU:N	2.16	0.78
1:A:505:ILE:HD11	1:A:531:CYS:HB3	1.64	0.77
1:C:74:ARG:CZ	1:C:376:TYR:CE1	2.67	0.77
1:C:385:GLY:O	1:C:386:LEU:CB	2.31	0.77
1:D:74:ARG:CZ	1:D:376:TYR:CE1	2.67	0.77
1:A:408:ALA:HB3	1:A:411:VAL:HG22	1.66	0.77
1:B:408:ALA:HB3	1:B:411:VAL:HG22	1.66	0.77
1:B:505:ILE:HD11	1:B:531:CYS:HB3	1.64	0.77
1:D:385:GLY:O	1:D:386:LEU:CB	2.31	0.77
1:A:356:PHE:CE1	1:A:430:HIS:HB3	2.18	0.77
1:C:505:ILE:HD11	1:C:531:CYS:CB	2.13	0.77
1:B:537:ARG:HB2	1:B:566:LEU:HD13	1.67	0.77
1:A:537:ARG:HB2	1:A:566:LEU:HD13	1.67	0.77
1:B:356:PHE:CE1	1:B:430:HIS:HB3	2.18	0.77
1:D:505:ILE:HD11	1:D:531:CYS:CB	2.13	0.77
1:A:74:ARG:CZ	1:A:376:TYR:CE1	2.67	0.77
1:A:414:GLU:N	1:A:414:GLU:OE1	2.16	0.77
1:A:555:GLN:O	1:A:559:GLN:HG3	1.84	0.77
1:B:74:ARG:CZ	1:B:376:TYR:CE1	2.67	0.77
1:B:470:ARG:CD	1:B:489:TRP:CD2	2.62	0.77
1:D:311:MET:SD	1:D:366:HIS:CD2	2.77	0.77
1:C:555:GLN:O	1:C:559:GLN:HG3	1.84	0.77
1:C:570:LYS:HB2	1:C:570:LYS:NZ	1.98	0.77
1:C:311:MET:SD	1:C:366:HIS:CD2	2.77	0.77
1:B:555:GLN:O	1:B:559:GLN:HG3	1.84	0.77
1:D:356:PHE:CE1	1:D:430:HIS:HB3	2.18	0.77
1:C:406:TRP:CZ3	1:C:439:MET:HB3	2.20	0.77
1:B:414:GLU:OE1	1:B:414:GLU:N	2.16	0.77
1:B:53:LEU:HD21	1:B:126:ALA:CB	2.14	0.77
1:B:208:LYS:NZ	1:B:208:LYS:HB2	1.98	0.77
1:B:406:TRP:CZ3	1:B:439:MET:HB3	2.20	0.77
1:D:313:LYS:CD	1:D:318:TYR:HE2	1.98	0.77
1:D:406:TRP:CZ3	1:D:439:MET:HB3	2.20	0.77
1:D:555:GLN:O	1:D:559:GLN:HG3	1.84	0.77
1:D:570:LYS:HB2	1:D:570:LYS:NZ	1.98	0.77
1:A:53:LEU:HD21	1:A:126:ALA:CB	2.14	0.76
1:A:208:LYS:HB2	1:A:208:LYS:NZ	1.98	0.76
1:C:313:LYS:CD	1:C:318:TYR:HE2	1.98	0.76
1:C:412:LEU:CD1	1:C:465:ILE:HG22	2.15	0.76
1:B:33:LEU:HD21	1:B:177:PHE:HD1	1.50	0.76
1:D:412:LEU:CD1	1:D:465:ILE:HG22	2.15	0.76

*Continued on next page...*



*Continued from previous page...*

Atom-1	Atom-2	Interatomic distance (Å)	Clash overlap (Å)
1:A:33:LEU:HD21	1:A:177:PHE:HD1	1.50	0.76
1:A:406:TRP:CZ3	1:A:439:MET:HB3	2.20	0.76
1:C:356:PHE:CE1	1:C:430:HIS:HB3	2.18	0.76
1:A:479:LYS:HB3	1:A:479:LYS:HZ3	1.48	0.76
1:C:537:ARG:HB2	1:C:566:LEU:HD13	1.67	0.76
1:B:311:MET:SD	1:B:366:HIS:CD2	2.78	0.76
1:D:537:ARG:HB2	1:D:566:LEU:HD13	1.67	0.76
1:A:311:MET:SD	1:A:366:HIS:CD2	2.77	0.76
1:C:53:LEU:HD21	1:C:126:ALA:CB	2.14	0.76
1:D:53:LEU:HD21	1:D:126:ALA:CB	2.14	0.76
1:B:311:MET:CG	1:B:366:HIS:CG	2.68	0.76
1:C:214:LEU:O	1:C:218:LEU:HD12	1.86	0.76
1:D:471:PRO:CD	1:D:489:TRP:HZ2	1.90	0.76
1:A:311:MET:CG	1:A:366:HIS:CG	2.69	0.75
1:D:214:LEU:O	1:D:218:LEU:HD12	1.86	0.75
1:B:121:VAL:CG1	1:B:564:ARG:HH12	1.99	0.75
1:A:37:LEU:HD11	1:A:177:PHE:HE1	1.51	0.75
1:A:214:LEU:O	1:A:218:LEU:HD12	1.86	0.75
1:B:37:LEU:HD11	1:B:177:PHE:HE1	1.51	0.75
1:B:214:LEU:O	1:B:218:LEU:HD12	1.86	0.75
1:A:121:VAL:CG1	1:A:564:ARG:HH12	1.99	0.75
1:A:290:LEU:CB	1:A:382:CYS:SG	2.74	0.75
1:C:471:PRO:CD	1:C:489:TRP:HZ2	1.90	0.75
1:B:290:LEU:CB	1:B:382:CYS:SG	2.74	0.75
1:C:21:GLN:NE2	1:C:32:CYS:SG	2.60	0.75
1:D:33:LEU:HD21	1:D:177:PHE:HD1	1.50	0.75
1:A:21:GLN:NE2	1:A:32:CYS:SG	2.60	0.75
1:C:33:LEU:HD21	1:C:177:PHE:HD1	1.50	0.75
1:C:311:MET:CG	1:C:366:HIS:CG	2.69	0.75
1:B:311:MET:H	1:B:311:MET:CE	2.00	0.75
1:D:21:GLN:NE2	1:D:32:CYS:SG	2.60	0.75
1:C:290:LEU:CB	1:C:382:CYS:SG	2.74	0.75
1:B:21:GLN:NE2	1:B:32:CYS:SG	2.60	0.75
1:D:311:MET:CG	1:D:366:HIS:CG	2.69	0.75
1:A:311:MET:H	1:A:311:MET:CE	2.00	0.75
1:B:118:SER:HB2	1:B:560:LEU:HD23	1.36	0.75
1:A:313:LYS:CD	1:A:318:TYR:HE2	1.98	0.74
1:C:515:VAL:HG12	1:C:516:ASN:ND2	2.02	0.74
1:B:412:LEU:CD1	1:B:465:ILE:HG22	2.15	0.74
1:B:542:PHE:N	1:B:543:PRO:HD2	2.02	0.74
1:D:515:VAL:HG12	1:D:516:ASN:ND2	2.02	0.74

*Continued on next page...*

*Continued from previous page...*

Atom-1	Atom-2	Interatomic distance (Å)	Clash overlap (Å)
1:A:542:PHE:N	1:A:543:PRO:HD2	2.02	0.74
1:C:490:HIS:O	1:C:496:ARG:CD	2.36	0.74
1:B:313:LYS:CD	1:B:318:TYR:HE2	1.98	0.74
1:B:408:ALA:HA	1:B:435:TYR:HD2	1.51	0.74
1:D:290:LEU:CB	1:D:382:CYS:SG	2.74	0.74
1:A:217:LYS:HB2	1:A:217:LYS:NZ	2.00	0.74
1:A:412:LEU:CD1	1:A:465:ILE:HG22	2.15	0.74
1:C:217:LYS:HB2	1:C:217:LYS:NZ	2.00	0.74
1:B:368:LYS:O	1:B:377:PHE:HB3	1.87	0.74
1:D:368:LYS:O	1:D:377:PHE:HB3	1.87	0.74
1:A:118:SER:HB2	1:A:560:LEU:HD23	1.36	0.74
1:A:368:LYS:O	1:A:377:PHE:HB3	1.87	0.74
1:A:408:ALA:HA	1:A:435:TYR:HD2	1.51	0.74
1:C:368:LYS:O	1:C:377:PHE:HB3	1.87	0.74
1:C:529:VAL:HG13	1:C:530:ASP:O	1.88	0.74
1:B:217:LYS:HB2	1:B:217:LYS:NZ	2.00	0.74
1:A:490:HIS:O	1:A:496:ARG:CD	2.36	0.74
1:B:490:HIS:O	1:B:496:ARG:CD	2.36	0.74
1:D:529:VAL:HG13	1:D:530:ASP:O	1.88	0.74
1:C:311:MET:H	1:C:311:MET:CE	2.00	0.74
1:D:217:LYS:HB2	1:D:217:LYS:NZ	2.00	0.74
1:D:311:MET:H	1:D:311:MET:CE	2.00	0.74
1:D:37:LEU:HD11	1:D:177:PHE:HE1	1.51	0.74
1:C:37:LEU:HD11	1:C:177:PHE:HE1	1.51	0.74
1:C:332:SER:O	1:C:336:VAL:HG23	1.88	0.74
1:B:515:VAL:HG12	1:B:516:ASN:ND2	2.02	0.74
1:D:332:SER:O	1:D:336:VAL:HG23	1.88	0.74
1:A:515:VAL:HG12	1:A:516:ASN:ND2	2.02	0.74
1:D:205:LYS:HG3	1:D:206:THR:HG23	1.70	0.74
1:C:205:LYS:HG3	1:C:206:THR:HG23	1.70	0.73
1:A:332:SER:O	1:A:336:VAL:HG23	1.88	0.73
1:C:118:SER:HB2	1:C:560:LEU:HD21	1.57	0.73
1:A:529:VAL:HG13	1:A:530:ASP:O	1.88	0.73
1:C:542:PHE:N	1:C:543:PRO:HD2	2.02	0.73
1:B:332:SER:O	1:B:336:VAL:HG23	1.88	0.73
1:D:118:SER:HB2	1:D:560:LEU:HD21	1.57	0.73
1:D:449:VAL:HG13	1:D:450:PRO:HD2	1.69	0.73
1:C:332:SER:HB2	1:C:334:PRO:HD2	1.70	0.73
1:B:529:VAL:HG13	1:B:530:ASP:O	1.88	0.73
1:D:542:PHE:N	1:D:543:PRO:HD2	2.02	0.73
1:C:449:VAL:HG13	1:C:450:PRO:HD2	1.69	0.73

*Continued on next page...*

*Continued from previous page...*

Atom-1	Atom-2	Interatomic distance (Å)	Clash overlap (Å)
1:D:332:SER:HB2	1:D:334:PRO:HD2	1.70	0.73
1:C:116:TYR:HE1	1:C:514:VAL:HG21	1.53	0.73
1:D:93:TRP:HZ3	1:D:214:LEU:HD12	1.52	0.73
1:D:116:TYR:HE1	1:D:514:VAL:HG21	1.53	0.73
1:D:439:MET:SD	1:D:442:PHE:CD2	2.82	0.73
1:A:439:MET:SD	1:A:442:PHE:CD2	2.82	0.73
1:A:449:VAL:HG13	1:A:450:PRO:HD2	1.69	0.73
1:C:439:MET:SD	1:C:442:PHE:CD2	2.82	0.73
1:C:439:MET:SD	1:C:442:PHE:HD2	2.12	0.73
1:B:439:MET:SD	1:B:442:PHE:CD2	2.82	0.73
1:B:449:VAL:HG13	1:B:450:PRO:HD2	1.69	0.73
1:D:439:MET:SD	1:D:442:PHE:HD2	2.12	0.73
1:A:93:TRP:HZ3	1:A:214:LEU:HD12	1.52	0.73
1:C:93:TRP:HZ3	1:C:214:LEU:HD12	1.52	0.73
1:B:93:TRP:HZ3	1:B:214:LEU:HD12	1.52	0.73
1:A:439:MET:SD	1:A:442:PHE:HD2	2.12	0.72
1:B:570:LYS:HB2	1:B:570:LYS:HZ2	1.54	0.72
1:A:205:LYS:HG3	1:A:206:THR:HG23	1.70	0.72
1:C:121:VAL:CG1	1:C:564:ARG:HH12	1.99	0.72
1:B:333:ILE:N	1:B:334:PRO:CD	2.52	0.72
1:B:439:MET:SD	1:B:442:PHE:HD2	2.12	0.72
1:D:121:VAL:CG1	1:D:564:ARG:HH12	1.99	0.72
1:A:333:ILE:N	1:A:334:PRO:CD	2.52	0.72
1:B:205:LYS:HG3	1:B:206:THR:HG23	1.71	0.72
1:D:311:MET:SD	1:D:366:HIS:NE2	2.63	0.72
1:A:332:SER:HB2	1:A:334:PRO:HD2	1.70	0.72
1:C:311:MET:SD	1:C:366:HIS:NE2	2.63	0.72
1:B:332:SER:HB2	1:B:334:PRO:HD2	1.70	0.72
1:B:409:PRO:HG2	1:B:410:GLU:OE1	1.90	0.71
1:C:280:SER:O	1:C:281:LEU:C	2.28	0.71
1:A:409:PRO:HG2	1:A:410:GLU:OE1	1.91	0.71
1:C:333:ILE:N	1:C:334:PRO:HD2	2.05	0.71
1:B:111:HIS:HE1	1:B:345:ARG:HD2	1.54	0.71
1:D:333:ILE:N	1:D:334:PRO:HD2	2.05	0.71
1:D:408:ALA:HA	1:D:435:TYR:HD2	1.51	0.71
1:D:470:ARG:HH21	1:D:486:LYS:CE	2.02	0.71
1:A:116:TYR:HE1	1:A:514:VAL:HG21	1.53	0.71
1:D:280:SER:O	1:D:281:LEU:C	2.28	0.71
1:A:111:HIS:HE1	1:A:345:ARG:HD2	1.54	0.71
1:A:470:ARG:HH21	1:A:486:LYS:CE	2.02	0.71
1:C:470:ARG:HH21	1:C:486:LYS:CE	2.02	0.71

*Continued on next page...*

*Continued from previous page...*

Atom-1	Atom-2	Interatomic distance (Å)	Clash overlap (Å)
1:B:470:ARG:HH21	1:B:486:LYS:CE	2.02	0.71
1:C:408:ALA:HA	1:C:435:TYR:HD2	1.51	0.71
1:B:116:TYR:HE1	1:B:514:VAL:HG21	1.53	0.71
1:A:511:LYS:O	1:A:515:VAL:HG23	1.91	0.71
1:B:511:LYS:O	1:B:515:VAL:HG23	1.91	0.71
1:C:290:LEU:CD1	1:C:309:GLU:O	2.31	0.71
1:B:311:MET:SD	1:B:366:HIS:NE2	2.63	0.71
1:C:409:PRO:HG2	1:C:410:GLU:OE1	1.91	0.71
1:B:471:PRO:CD	1:B:489:TRP:CZ2	2.67	0.71
1:A:471:PRO:CD	1:A:489:TRP:CZ2	2.67	0.70
1:D:333:ILE:N	1:D:334:PRO:CD	2.52	0.70
1:D:409:PRO:HG2	1:D:410:GLU:OE1	1.91	0.70
1:A:311:MET:SD	1:A:366:HIS:NE2	2.63	0.70
1:A:333:ILE:N	1:A:334:PRO:HD2	2.05	0.70
1:C:333:ILE:N	1:C:334:PRO:CD	2.52	0.70
1:B:333:ILE:N	1:B:334:PRO:HD2	2.05	0.70
1:D:490:HIS:O	1:D:496:ARG:CD	2.36	0.70
1:D:471:PRO:CD	1:D:489:TRP:CZ2	2.67	0.70
1:C:169:LEU:HD11	1:C:557:PRO:HG3	1.74	0.70
1:D:169:LEU:HD11	1:D:557:PRO:HG3	1.74	0.70
1:D:311:MET:CB	1:D:366:HIS:HB3	2.18	0.70
1:A:451:PHE:HZ	1:A:465:ILE:HD11	1.56	0.70
1:C:111:HIS:HE1	1:C:345:ARG:HD2	1.54	0.70
1:B:451:PHE:HZ	1:B:465:ILE:HD11	1.56	0.70
1:A:332:SER:HG	1:A:334:PRO:HG2	1.55	0.69
1:C:471:PRO:CD	1:C:489:TRP:CZ2	2.67	0.69
1:B:332:SER:HG	1:B:334:PRO:HG2	1.55	0.69
1:A:169:LEU:HD11	1:A:557:PRO:HG3	1.74	0.69
1:A:313:LYS:CD	1:A:318:TYR:CE2	2.75	0.69
1:A:439:MET:HA	1:A:442:PHE:CD2	2.27	0.69
1:C:311:MET:CB	1:C:366:HIS:HB3	2.18	0.69
1:B:313:LYS:CD	1:B:318:TYR:CE2	2.75	0.69
1:D:111:HIS:HE1	1:D:345:ARG:HD2	1.55	0.69
1:B:169:LEU:HD11	1:B:557:PRO:HG3	1.74	0.69
1:B:439:MET:HA	1:B:442:PHE:CD2	2.27	0.69
1:C:511:LYS:O	1:C:515:VAL:HG23	1.91	0.69
1:D:535:GLU:OE1	1:D:563:TYR:OH	2.10	0.69
1:C:451:PHE:HZ	1:C:465:ILE:HD11	1.56	0.69
1:B:280:SER:O	1:B:281:LEU:C	2.28	0.69
1:D:508:TYR:OH	1:D:528:LEU:CD1	2.40	0.69
1:D:511:LYS:O	1:D:515:VAL:HG23	1.91	0.69

*Continued on next page...*

*Continued from previous page...*

Atom-1	Atom-2	Interatomic distance (Å)	Clash overlap (Å)
1:C:312:HIS:CD2	1:C:368:LYS:HD3	2.28	0.69
1:C:508:TYR:OH	1:C:528:LEU:CD1	2.40	0.69
1:A:280:SER:O	1:A:281:LEU:C	2.28	0.69
1:C:535:GLU:OE1	1:C:563:TYR:OH	2.10	0.69
1:D:312:HIS:CD2	1:D:368:LYS:HD3	2.28	0.69
1:A:312:HIS:CD2	1:A:368:LYS:HD3	2.28	0.69
1:B:312:HIS:CD2	1:B:368:LYS:HD3	2.28	0.69
1:D:451:PHE:HZ	1:D:465:ILE:HD11	1.56	0.69
1:D:470:ARG:HH21	1:D:486:LYS:HE3	1.58	0.69
1:C:74:ARG:NH2	1:C:376:TYR:CE1	2.61	0.69
1:C:470:ARG:HH21	1:C:486:LYS:HE3	1.58	0.69
1:D:74:ARG:NH2	1:D:376:TYR:CE1	2.61	0.69
1:A:475:PHE:N	1:A:476:PRO:HD2	2.08	0.68
1:A:508:TYR:OH	1:A:528:LEU:CD1	2.40	0.68
1:D:570:LYS:HB2	1:D:570:LYS:HZ2	1.58	0.68
1:A:535:GLU:OE1	1:A:563:TYR:OH	2.10	0.68
1:C:570:LYS:HB2	1:C:570:LYS:HZ2	1.59	0.68
1:B:475:PHE:N	1:B:476:PRO:HD2	2.08	0.68
1:D:479:LYS:HB3	1:D:479:LYS:HZ3	1.56	0.68
1:C:33:LEU:HD21	1:C:177:PHE:CD1	2.28	0.68
1:B:508:TYR:OH	1:B:528:LEU:CD1	2.40	0.68
1:B:535:GLU:OE1	1:B:563:TYR:OH	2.10	0.68
1:C:37:LEU:HD11	1:C:177:PHE:CE1	2.28	0.68
1:D:33:LEU:HD21	1:D:177:PHE:CD1	2.28	0.68
1:D:37:LEU:HD11	1:D:177:PHE:CE1	2.28	0.68
1:A:33:LEU:HD21	1:A:177:PHE:CD1	2.28	0.68
1:A:37:LEU:HD11	1:A:177:PHE:CE1	2.28	0.68
1:A:74:ARG:NH2	1:A:376:TYR:CE1	2.61	0.68
1:C:439:MET:HA	1:C:442:PHE:CD2	2.27	0.68
1:C:446:THR:CG2	1:C:473:PHE:CD2	2.77	0.68
1:B:33:LEU:HD21	1:B:177:PHE:CD1	2.28	0.68
1:B:74:ARG:NH2	1:B:376:TYR:CE1	2.61	0.68
1:D:439:MET:HA	1:D:442:PHE:CD2	2.27	0.68
1:B:37:LEU:HD11	1:B:177:PHE:CE1	2.28	0.68
1:D:446:THR:CG2	1:D:473:PHE:CD2	2.77	0.68
1:C:475:PHE:N	1:C:476:PRO:HD2	2.08	0.68
1:B:311:MET:CB	1:B:366:HIS:HB3	2.18	0.68
1:A:311:MET:CB	1:A:366:HIS:HB3	2.18	0.68
1:C:375:GLY:O	1:C:377:PHE:CE2	2.47	0.68
1:C:471:PRO:HG2	1:C:489:TRP:CH2	2.30	0.67
1:D:375:GLY:O	1:D:377:PHE:CE2	2.47	0.67

*Continued on next page...*

*Continued from previous page...*

Atom-1	Atom-2	Interatomic distance (Å)	Clash overlap (Å)
1:C:479:LYS:HB3	1:C:479:LYS:HZ3	1.58	0.67
1:D:475:PHE:N	1:D:476:PRO:HD2	2.08	0.67
1:B:471:PRO:HG2	1:B:489:TRP:CH2	2.30	0.67
1:A:570:LYS:HB2	1:A:570:LYS:HZ3	1.57	0.67
1:B:78:GLU:HG3	1:B:109:HIS:CE1	2.30	0.67
1:B:470:ARG:HH21	1:B:486:LYS:HE3	1.58	0.67
1:A:78:GLU:HG3	1:A:109:HIS:CE1	2.30	0.67
1:A:470:ARG:HH21	1:A:486:LYS:HE3	1.58	0.67
1:A:471:PRO:HG2	1:A:489:TRP:CH2	2.30	0.67
1:A:499:PHE:HA	1:A:502:ILE:HG22	1.76	0.67
1:B:499:PHE:HA	1:B:502:ILE:HG22	1.76	0.67
1:D:499:PHE:HA	1:D:502:ILE:HG22	1.76	0.67
1:A:446:THR:CG2	1:A:473:PHE:CD2	2.77	0.67
1:C:74:ARG:HG3	1:C:373:THR:HG22	1.77	0.67
1:B:74:ARG:HG3	1:B:373:THR:HG22	1.77	0.67
1:D:74:ARG:HG3	1:D:373:THR:HG22	1.77	0.67
1:A:375:GLY:O	1:A:377:PHE:CE2	2.47	0.67
1:B:375:GLY:O	1:B:377:PHE:CE2	2.47	0.67
1:B:446:THR:CG2	1:B:473:PHE:CD2	2.77	0.67
1:A:74:ARG:HG3	1:A:373:THR:HG22	1.77	0.67
1:A:159:PHE:HZ	1:A:561:THR:HG21	1.60	0.67
1:C:499:PHE:HA	1:C:502:ILE:HG22	1.76	0.67
1:C:216:LYS:HA	1:C:219:THR:CG2	2.25	0.66
1:B:159:PHE:HZ	1:B:561:THR:HG21	1.60	0.66
1:B:311:MET:CB	1:B:366:HIS:CG	2.79	0.66
1:D:215:LEU:O	1:D:219:THR:HG23	1.95	0.66
1:D:216:LYS:HA	1:D:219:THR:CG2	2.25	0.66
1:A:216:LYS:HA	1:A:219:THR:CG2	2.25	0.66
1:A:311:MET:CB	1:A:366:HIS:CG	2.79	0.66
1:B:216:LYS:HA	1:B:219:THR:CG2	2.25	0.66
1:B:484:LEU:HD23	1:B:484:LEU:C	2.16	0.66
1:A:484:LEU:C	1:A:484:LEU:HD23	2.15	0.66
1:C:215:LEU:O	1:C:219:THR:HG23	1.96	0.66
1:D:78:GLU:HG3	1:D:109:HIS:CE1	2.30	0.66
1:C:78:GLU:HG3	1:C:109:HIS:CE1	2.30	0.66
1:B:290:LEU:CD1	1:B:309:GLU:O	2.31	0.66
1:A:290:LEU:CD1	1:A:309:GLU:O	2.31	0.66
1:B:406:TRP:HZ3	1:B:439:MET:HB3	1.61	0.66
1:D:484:LEU:C	1:D:484:LEU:HD23	2.15	0.66
1:D:492:GLU:O	1:D:496:ARG:NE	2.29	0.66
1:A:311:MET:CB	1:A:366:HIS:CB	2.74	0.66

*Continued on next page...*

*Continued from previous page...*

Atom-1	Atom-2	Interatomic distance (Å)	Clash overlap (Å)
1:C:484:LEU:HD23	1:C:484:LEU:C	2.16	0.66
1:C:492:GLU:O	1:C:496:ARG:NE	2.29	0.66
1:B:311:MET:CB	1:B:366:HIS:CB	2.74	0.66
1:A:406:TRP:HZ3	1:A:439:MET:HB3	1.61	0.66
1:A:471:PRO:CD	1:A:489:TRP:HZ2	1.90	0.66
1:C:127:ALA:HB2	1:C:141:ARG:HD2	1.78	0.66
1:D:127:ALA:HB2	1:D:141:ARG:HD2	1.78	0.66
1:A:215:LEU:O	1:A:219:THR:HG23	1.96	0.65
1:C:182:ARG:NH1	1:B:190:GLU:OE1	2.29	0.65
1:B:208:LYS:HB2	1:B:208:LYS:HZ3	1.59	0.65
1:A:208:LYS:HB2	1:A:208:LYS:HZ3	1.59	0.65
1:A:442:PHE:CD1	1:A:473:PHE:CZ	2.84	0.65
1:B:215:LEU:O	1:B:219:THR:HG23	1.96	0.65
1:B:471:PRO:CD	1:B:489:TRP:HZ2	1.90	0.65
1:D:182:ARG:HB3	1:D:186:TRP:CZ3	2.31	0.65
1:C:190:GLU:OE1	1:B:182:ARG:NH1	2.30	0.65
1:C:182:ARG:HB3	1:C:186:TRP:CZ3	2.31	0.65
1:B:182:ARG:HB3	1:B:186:TRP:CZ3	2.31	0.65
1:A:182:ARG:HB3	1:A:186:TRP:CZ3	2.31	0.65
1:A:492:GLU:O	1:A:496:ARG:NE	2.29	0.65
1:D:311:MET:CB	1:D:366:HIS:CG	2.79	0.65
1:B:492:GLU:O	1:B:496:ARG:NE	2.29	0.65
1:C:311:MET:CB	1:C:366:HIS:CG	2.79	0.65
1:B:442:PHE:CE2	1:B:489:TRP:CZ3	2.85	0.65
1:A:442:PHE:CE2	1:A:489:TRP:CZ3	2.85	0.65
1:B:216:LYS:HA	1:B:219:THR:HG23	1.79	0.65
1:B:470:ARG:CD	1:B:489:TRP:NE1	2.60	0.65
1:D:478:PRO:O	1:D:482:VAL:HG23	1.97	0.65
1:A:67:GLN:CG	1:A:517:PRO:HB3	2.24	0.65
1:A:216:LYS:HA	1:A:219:THR:HG23	1.79	0.65
1:A:310:LEU:O	1:A:310:LEU:HD13	1.97	0.65
1:A:470:ARG:CD	1:A:489:TRP:NE1	2.60	0.65
1:A:504:ARG:NH1	1:A:535:GLU:OE2	2.30	0.65
1:C:478:PRO:O	1:C:482:VAL:HG23	1.97	0.65
1:D:470:ARG:CD	1:D:489:TRP:NE1	2.60	0.65
1:D:310:LEU:O	1:D:310:LEU:HD13	1.97	0.64
1:C:310:LEU:O	1:C:310:LEU:HD13	1.97	0.64
1:C:470:ARG:CD	1:C:489:TRP:NE1	2.60	0.64
1:B:310:LEU:O	1:B:310:LEU:HD13	1.97	0.64
1:B:504:ARG:NH1	1:B:535:GLU:OE2	2.30	0.64
1:A:127:ALA:HB2	1:A:141:ARG:HD2	1.78	0.64

*Continued on next page...*



*Continued from previous page...*

Atom-1	Atom-2	Interatomic distance (Å)	Clash overlap (Å)
1:C:442:PHE:CE2	1:C:489:TRP:CE3	2.85	0.64
1:B:67:GLN:CG	1:B:517:PRO:HB3	2.24	0.64
1:B:127:ALA:HB2	1:B:141:ARG:HD2	1.78	0.64
1:D:442:PHE:CE2	1:D:489:TRP:CE3	2.85	0.64
1:A:24:ILE:HD11	1:A:87:MET:HG2	1.79	0.64
1:C:67:GLN:CG	1:C:517:PRO:HB3	2.24	0.64
1:C:504:ARG:NH1	1:C:535:GLU:OE2	2.30	0.64
1:B:24:ILE:HD11	1:B:87:MET:HG2	1.79	0.64
1:D:313:LYS:CD	1:D:318:TYR:CE2	2.75	0.64
1:C:279:SER:O	1:C:282:LEU:HD23	1.97	0.64
1:B:25:LEU:HB2	1:B:92:TRP:HE1	1.63	0.64
1:D:504:ARG:NH1	1:D:535:GLU:OE2	2.30	0.64
1:A:25:LEU:HB2	1:A:92:TRP:HE1	1.63	0.64
1:B:490:HIS:HB3	1:B:495:GLN:NE2	2.13	0.64
1:D:279:SER:O	1:D:282:LEU:HD23	1.97	0.64
1:A:490:HIS:HB3	1:A:495:GLN:NE2	2.13	0.64
1:C:313:LYS:CD	1:C:318:TYR:CE2	2.75	0.64
1:D:67:GLN:CG	1:D:517:PRO:HB3	2.24	0.64
1:A:310:LEU:HD13	1:A:310:LEU:C	2.18	0.64
1:C:442:PHE:CE2	1:C:489:TRP:CZ3	2.85	0.64
1:B:442:PHE:CD1	1:B:473:PHE:CZ	2.84	0.64
1:D:442:PHE:CE2	1:D:489:TRP:CZ3	2.85	0.64
1:D:24:ILE:HD11	1:D:87:MET:HG2	1.79	0.64
1:D:332:SER:HG	1:D:334:PRO:HG2	1.62	0.64
1:A:310:LEU:HD22	1:A:310:LEU:C	2.18	0.63
1:C:24:ILE:HD11	1:C:87:MET:HG2	1.79	0.63
1:D:25:LEU:HB2	1:D:92:TRP:HE1	1.63	0.63
1:D:412:LEU:HD11	1:D:465:ILE:HG21	1.79	0.63
1:C:332:SER:HG	1:C:334:PRO:HG2	1.62	0.63
1:B:310:LEU:HD22	1:B:310:LEU:C	2.18	0.63
1:B:310:LEU:HD13	1:B:310:LEU:C	2.18	0.63
1:A:319:MET:HA	1:A:322:ASN:CG	2.19	0.63
1:A:478:PRO:O	1:A:482:VAL:HG23	1.97	0.63
1:C:25:LEU:HB2	1:C:92:TRP:HE1	1.63	0.63
1:C:159:PHE:HZ	1:C:561:THR:HG21	1.60	0.63
1:C:311:MET:CB	1:C:366:HIS:CB	2.74	0.63
1:D:311:MET:CB	1:D:366:HIS:CB	2.74	0.63
1:A:279:SER:O	1:A:282:LEU:HD23	1.98	0.63
1:B:279:SER:O	1:B:282:LEU:HD23	1.97	0.63
1:B:319:MET:HA	1:B:322:ASN:CG	2.19	0.63
1:B:439:MET:CE	1:B:450:PRO:HG2	2.29	0.63

*Continued on next page...*



*Continued from previous page...*

Atom-1	Atom-2	Interatomic distance (Å)	Clash overlap (Å)
1:D:310:LEU:HD13	1:D:310:LEU:C	2.18	0.63
1:A:439:MET:CE	1:A:450:PRO:HG2	2.29	0.63
1:A:442:PHE:CE2	1:A:489:TRP:CE3	2.85	0.63
1:A:515:VAL:HG12	1:A:516:ASN:HD21	1.64	0.63
1:C:310:LEU:HD13	1:C:310:LEU:C	2.18	0.63
1:C:412:LEU:HD11	1:C:465:ILE:HG21	1.79	0.63
1:C:555:GLN:HB3	1:C:559:GLN:HE21	1.64	0.63
1:C:216:LYS:HA	1:C:219:THR:HG23	1.79	0.63
1:B:442:PHE:CE2	1:B:489:TRP:CE3	2.85	0.63
1:B:478:PRO:O	1:B:482:VAL:HG23	1.97	0.63
1:B:515:VAL:HG12	1:B:516:ASN:HD21	1.64	0.63
1:D:216:LYS:HA	1:D:219:THR:HG23	1.79	0.63
1:D:555:GLN:HB3	1:D:559:GLN:HE21	1.64	0.63
1:A:475:PHE:CG	1:A:476:PRO:CD	2.82	0.63
1:D:159:PHE:HZ	1:D:561:THR:HG21	1.60	0.63
1:D:442:PHE:CD1	1:D:473:PHE:CZ	2.84	0.63
1:C:169:LEU:HD21	1:C:557:PRO:HG3	1.80	0.63
1:C:442:PHE:CD1	1:C:473:PHE:CZ	2.84	0.63
1:B:475:PHE:CG	1:B:476:PRO:CD	2.82	0.63
1:A:280:SER:O	1:A:283:ALA:N	2.32	0.63
1:B:280:SER:O	1:B:283:ALA:N	2.32	0.63
1:D:490:HIS:HB3	1:D:495:GLN:NE2	2.13	0.63
1:D:536:ALA:O	1:D:540:ARG:N	2.31	0.63
1:C:439:MET:CE	1:C:450:PRO:HG2	2.29	0.62
1:B:479:LYS:HB3	1:B:479:LYS:HZ2	1.63	0.62
1:D:439:MET:CE	1:D:450:PRO:HG2	2.29	0.62
1:D:475:PHE:CG	1:D:476:PRO:CD	2.82	0.62
1:C:515:VAL:HG12	1:C:516:ASN:HD21	1.64	0.62
1:D:169:LEU:HD21	1:D:557:PRO:HG3	1.80	0.62
1:C:475:PHE:CG	1:C:476:PRO:CD	2.82	0.62
1:C:490:HIS:HB3	1:C:495:GLN:NE2	2.13	0.62
1:A:555:GLN:HB3	1:A:559:GLN:HE21	1.64	0.62
1:C:536:ALA:O	1:C:540:ARG:N	2.31	0.62
1:B:312:HIS:HD2	1:B:368:LYS:CE	2.04	0.62
1:D:515:VAL:HG12	1:D:516:ASN:HD21	1.64	0.62
1:A:312:HIS:HD2	1:A:368:LYS:CE	2.04	0.62
1:A:487:ARG:NH2	1:A:532:TRP:HD1	1.98	0.62
1:C:171:ARG:O	1:C:173:ILE:HA	1.99	0.62
1:C:319:MET:HA	1:C:322:ASN:CG	2.19	0.62
1:B:536:ALA:O	1:B:540:ARG:N	2.31	0.62
1:D:154:ASN:HB3	1:D:542:PHE:CE1	2.35	0.62

*Continued on next page...*

*Continued from previous page...*

Atom-1	Atom-2	Interatomic distance (Å)	Clash overlap (Å)
1:D:319:MET:HA	1:D:322:ASN:CG	2.19	0.62
1:C:108:PHE:HZ	1:C:370:ARG:HH12	1.48	0.62
1:C:154:ASN:HB3	1:C:542:PHE:CE1	2.35	0.62
1:C:280:SER:C	1:C:282:LEU:N	2.53	0.62
1:B:487:ARG:NH2	1:B:532:TRP:HD1	1.98	0.62
1:A:536:ALA:O	1:A:540:ARG:N	2.31	0.62
1:B:409:PRO:HA	1:B:412:LEU:HG	1.82	0.62
1:D:108:PHE:HZ	1:D:370:ARG:HH12	1.48	0.62
1:D:171:ARG:O	1:D:173:ILE:HA	2.00	0.62
1:D:280:SER:C	1:D:282:LEU:N	2.53	0.62
1:A:409:PRO:HA	1:A:412:LEU:HG	1.82	0.62
1:A:541:LYS:NZ	1:A:541:LYS:HB3	2.15	0.62
1:C:360:LEU:HB3	1:C:436:SER:HB2	1.81	0.62
1:B:541:LYS:NZ	1:B:541:LYS:HB3	2.15	0.62
1:B:555:GLN:HB3	1:B:559:GLN:HE21	1.64	0.62
1:D:360:LEU:HB3	1:D:436:SER:HB2	1.81	0.62
1:D:471:PRO:HG2	1:D:489:TRP:CH2	2.30	0.62
1:B:411:VAL:HA	1:B:414:GLU:OE2	2.00	0.62
1:A:171:ARG:O	1:A:173:ILE:HA	1.99	0.62
1:A:411:VAL:HA	1:A:414:GLU:OE2	2.00	0.62
1:C:104:ASP:O	1:C:107:GLU:HG3	2.00	0.62
1:D:104:ASP:O	1:D:107:GLU:HG3	2.00	0.62
1:A:278:ILE:O	1:A:278:ILE:HG12	1.99	0.61
1:C:403:PRO:O	1:C:403:PRO:HD2	2.00	0.61
1:D:375:GLY:O	1:D:377:PHE:CZ	2.52	0.61
1:A:169:LEU:HD21	1:A:557:PRO:HG3	1.80	0.61
1:C:541:LYS:NZ	1:C:541:LYS:HB3	2.15	0.61
1:B:171:ARG:O	1:B:173:ILE:HA	2.00	0.61
1:B:278:ILE:HG12	1:B:278:ILE:O	1.99	0.61
1:C:312:HIS:HD2	1:C:368:LYS:CE	2.04	0.61
1:C:375:GLY:O	1:C:377:PHE:CZ	2.53	0.61
1:C:411:VAL:HA	1:C:414:GLU:OE2	2.00	0.61
1:D:403:PRO:HD2	1:D:403:PRO:O	2.00	0.61
1:A:104:ASP:O	1:A:107:GLU:HG3	2.00	0.61
1:A:108:PHE:HZ	1:A:370:ARG:HH12	1.48	0.61
1:A:280:SER:C	1:A:282:LEU:N	2.53	0.61
1:C:487:ARG:NH2	1:C:532:TRP:HD1	1.98	0.61
1:B:375:GLY:O	1:B:377:PHE:CZ	2.52	0.61
1:D:312:HIS:HD2	1:D:368:LYS:CE	2.04	0.61
1:D:541:LYS:NZ	1:D:541:LYS:HB3	2.15	0.61
1:A:375:GLY:O	1:A:377:PHE:CZ	2.53	0.61

*Continued on next page...*

*Continued from previous page...*

Atom-1	Atom-2	Interatomic distance (Å)	Clash overlap (Å)
1:C:560:LEU:HD12	1:C:560:LEU:O	2.00	0.61
1:B:104:ASP:O	1:B:107:GLU:HG3	2.00	0.61
1:B:108:PHE:HZ	1:B:370:ARG:HH12	1.48	0.61
1:B:154:ASN:HB3	1:B:542:PHE:CE1	2.35	0.61
1:B:169:LEU:HD21	1:B:557:PRO:HG3	1.80	0.61
1:B:280:SER:C	1:B:282:LEU:N	2.53	0.61
1:D:411:VAL:HA	1:D:414:GLU:OE2	2.00	0.61
1:D:487:ARG:NH2	1:D:532:TRP:HD1	1.98	0.61
1:A:154:ASN:HB3	1:A:542:PHE:CE1	2.35	0.61
1:D:560:LEU:HD12	1:D:560:LEU:O	2.01	0.61
1:A:404:VAL:O	1:A:404:VAL:HG12	2.00	0.61
1:B:404:VAL:O	1:B:404:VAL:HG12	2.00	0.61
1:A:360:LEU:HB3	1:A:436:SER:HB2	1.81	0.61
1:C:310:LEU:HD22	1:C:310:LEU:C	2.18	0.61
1:B:360:LEU:HB3	1:B:436:SER:HB2	1.81	0.60
1:B:479:LYS:HB3	1:B:479:LYS:HZ3	1.62	0.60
1:D:278:ILE:O	1:D:278:ILE:HG12	1.99	0.60
1:D:290:LEU:CD1	1:D:309:GLU:O	2.31	0.60
1:D:310:LEU:HD22	1:D:310:LEU:C	2.18	0.60
1:A:560:LEU:HD12	1:A:560:LEU:O	2.00	0.60
1:C:409:PRO:HA	1:C:412:LEU:HG	1.82	0.60
1:B:412:LEU:HD11	1:B:465:ILE:HG21	1.79	0.60
1:B:475:PHE:CG	1:B:476:PRO:HD3	2.36	0.60
1:D:409:PRO:HA	1:D:412:LEU:HG	1.82	0.60
1:A:475:PHE:CG	1:A:476:PRO:HD3	2.36	0.60
1:C:278:ILE:O	1:C:278:ILE:HG12	1.99	0.60
1:D:406:TRP:HZ3	1:D:439:MET:HB3	1.61	0.60
1:B:560:LEU:O	1:B:560:LEU:HD12	2.01	0.60
1:A:412:LEU:HD11	1:A:465:ILE:HG21	1.79	0.60
1:C:479:LYS:HG3	1:C:527:PRO:HG3	1.83	0.60
1:C:208:LYS:HB2	1:C:208:LYS:HZ2	1.67	0.60
1:D:404:VAL:O	1:D:404:VAL:HG12	2.00	0.60
1:C:404:VAL:O	1:C:404:VAL:HG12	2.00	0.60
1:C:406:TRP:HZ3	1:C:439:MET:HB3	1.61	0.60
1:B:403:PRO:HD2	1:B:403:PRO:O	2.00	0.60
1:D:310:LEU:HD22	1:D:311:MET:HE2	1.82	0.60
1:D:479:LYS:HG3	1:D:527:PRO:HG3	1.84	0.60
1:C:78:GLU:OE1	1:C:78:GLU:HA	2.01	0.60
1:D:78:GLU:OE1	1:D:78:GLU:HA	2.01	0.60
1:A:403:PRO:O	1:A:403:PRO:HD2	2.00	0.60
1:B:356:PHE:CE1	1:B:430:HIS:CA	2.84	0.60

*Continued on next page...*

*Continued from previous page...*

Atom-1	Atom-2	Interatomic distance (Å)	Clash overlap (Å)
1:D:472:LEU:HD12	1:D:472:LEU:C	2.22	0.60
1:A:78:GLU:OE1	1:A:78:GLU:HA	2.01	0.59
1:A:356:PHE:CE1	1:A:430:HIS:CA	2.84	0.59
1:C:310:LEU:HD22	1:C:311:MET:HE2	1.82	0.59
1:C:472:LEU:HD12	1:C:472:LEU:C	2.22	0.59
1:C:475:PHE:CG	1:C:476:PRO:HD3	2.36	0.59
1:D:475:PHE:CG	1:D:476:PRO:HD3	2.36	0.59
1:D:541:LYS:C	1:D:543:PRO:HD2	2.22	0.59
1:C:541:LYS:C	1:C:543:PRO:HD2	2.22	0.59
1:B:78:GLU:OE1	1:B:78:GLU:HA	2.01	0.59
1:D:53:LEU:CD2	1:D:126:ALA:HB2	2.31	0.59
1:D:356:PHE:CE1	1:D:430:HIS:CA	2.84	0.59
1:C:53:LEU:CD2	1:C:126:ALA:HB2	2.31	0.59
1:C:108:PHE:HZ	1:C:370:ARG:NH1	2.01	0.59
1:D:108:PHE:HZ	1:D:370:ARG:NH1	2.00	0.59
1:A:108:PHE:HZ	1:A:370:ARG:NH1	2.00	0.59
1:A:479:LYS:HG3	1:A:527:PRO:HG3	1.83	0.59
1:A:534:LEU:O	1:A:537:ARG:HG2	2.02	0.59
1:C:356:PHE:CE1	1:C:430:HIS:CA	2.84	0.59
1:B:108:PHE:HZ	1:B:370:ARG:NH1	2.00	0.59
1:B:479:LYS:HG3	1:B:527:PRO:HG3	1.84	0.59
1:B:534:LEU:O	1:B:537:ARG:HG2	2.02	0.59
1:C:53:LEU:HD13	1:C:62:TRP:CE2	2.37	0.59
1:D:553:VAL:O	1:D:556:ILE:HG13	2.02	0.59
1:A:356:PHE:CD1	1:A:430:HIS:HA	2.38	0.59
1:A:411:VAL:CA	1:A:414:GLU:OE2	2.51	0.59
1:C:280:SER:O	1:C:283:ALA:N	2.32	0.59
1:C:411:VAL:CA	1:C:414:GLU:OE2	2.51	0.59
1:C:553:VAL:O	1:C:556:ILE:HG13	2.03	0.59
1:B:356:PHE:CD1	1:B:430:HIS:HA	2.38	0.59
1:B:411:VAL:CA	1:B:414:GLU:OE2	2.51	0.59
1:B:472:LEU:HD12	1:B:472:LEU:C	2.22	0.59
1:D:53:LEU:HD13	1:D:62:TRP:CE2	2.37	0.59
1:D:411:VAL:CA	1:D:414:GLU:OE2	2.51	0.59
1:D:534:LEU:O	1:D:537:ARG:HG2	2.02	0.59
1:C:534:LEU:O	1:C:537:ARG:HG2	2.02	0.59
1:D:217:LYS:HB2	1:D:217:LYS:HZ3	1.66	0.59
1:A:116:TYR:HE1	1:A:514:VAL:CG2	2.15	0.59
1:A:408:ALA:CA	1:A:435:TYR:CD2	2.74	0.59
1:A:472:LEU:HD12	1:A:472:LEU:C	2.22	0.59
1:C:313:LYS:HD2	1:C:318:TYR:CZ	2.37	0.59

*Continued on next page...*

*Continued from previous page...*

Atom-1	Atom-2	Interatomic distance (Å)	Clash overlap (Å)
1:C:373:THR:C	1:C:374:GLU:OE2	2.41	0.59
1:D:154:ASN:HB3	1:D:542:PHE:CZ	2.38	0.59
1:D:280:SER:O	1:D:283:ALA:N	2.32	0.59
1:D:373:THR:C	1:D:374:GLU:OE2	2.41	0.59
1:A:214:LEU:O	1:A:218:LEU:CD1	2.51	0.59
1:C:154:ASN:HB3	1:C:542:PHE:CZ	2.38	0.59
1:C:214:LEU:O	1:C:218:LEU:CD1	2.51	0.59
1:B:116:TYR:HE1	1:B:514:VAL:CG2	2.15	0.59
1:B:214:LEU:O	1:B:218:LEU:CD1	2.50	0.59
1:B:408:ALA:CA	1:B:435:TYR:CD2	2.74	0.59
1:D:116:TYR:HE1	1:D:514:VAL:CG2	2.15	0.59
1:D:214:LEU:O	1:D:218:LEU:CD1	2.51	0.59
1:A:541:LYS:C	1:A:543:PRO:HD2	2.22	0.59
1:C:217:LYS:HB2	1:C:217:LYS:HZ3	1.66	0.59
1:B:313:LYS:HD2	1:B:318:TYR:CZ	2.37	0.59
1:D:124:ILE:O	1:D:124:ILE:HG22	2.03	0.59
1:D:208:LYS:HB2	1:D:208:LYS:HZ2	1.68	0.59
1:D:313:LYS:HD2	1:D:318:TYR:CZ	2.37	0.59
1:A:53:LEU:HD13	1:A:62:TRP:CE2	2.37	0.58
1:A:313:LYS:HD2	1:A:318:TYR:CZ	2.37	0.58
1:C:116:TYR:HE1	1:C:514:VAL:CG2	2.15	0.58
1:C:124:ILE:O	1:C:124:ILE:HG22	2.03	0.58
1:B:541:LYS:C	1:B:543:PRO:HD2	2.22	0.58
1:A:406:TRP:CE3	1:A:439:MET:HB3	2.38	0.58
1:B:53:LEU:HD13	1:B:62:TRP:CE2	2.37	0.58
1:B:147:ARG:NH2	1:D:152:GLU:OE2	2.36	0.58
1:B:406:TRP:CE3	1:B:439:MET:HB3	2.38	0.58
1:A:553:VAL:O	1:A:556:ILE:HG13	2.02	0.58
1:A:199:ASP:OD2	1:A:208:LYS:CD	2.51	0.58
1:B:124:ILE:HG22	1:B:124:ILE:O	2.03	0.58
1:B:199:ASP:OD2	1:B:208:LYS:CD	2.51	0.58
1:B:332:SER:H	1:B:335:VAL:HG22	1.68	0.58
1:B:553:VAL:O	1:B:556:ILE:HG13	2.02	0.58
1:D:356:PHE:CD1	1:D:430:HIS:HA	2.38	0.58
1:D:370:ARG:HG3	1:D:377:PHE:N	2.18	0.58
1:A:124:ILE:O	1:A:124:ILE:HG22	2.03	0.58
1:D:350:LEU:HB3	1:D:355:ILE:HG23	1.84	0.58
1:A:332:SER:H	1:A:335:VAL:HG22	1.68	0.58
1:C:70:ARG:O	1:C:73:THR:HG22	2.04	0.58
1:C:350:LEU:HB3	1:C:355:ILE:HG23	1.84	0.58
1:C:356:PHE:CD1	1:C:430:HIS:HA	2.38	0.58

*Continued on next page...*

*Continued from previous page...*

Atom-1	Atom-2	Interatomic distance (Å)	Clash overlap (Å)
1:B:186:TRP:HA	1:B:189:VAL:HG22	1.86	0.58
1:D:70:ARG:O	1:D:73:THR:HG22	2.04	0.58
1:A:186:TRP:HA	1:A:189:VAL:HG22	1.86	0.58
1:C:370:ARG:HG3	1:C:377:PHE:N	2.19	0.58
1:D:332:SER:CB	1:D:334:PRO:CD	2.81	0.58
1:A:350:LEU:HB3	1:A:355:ILE:HG23	1.84	0.58
1:C:319:MET:O	1:C:322:ASN:CG	2.42	0.58
1:B:81:LEU:CD1	1:B:372:HIS:CE1	2.80	0.58
1:B:350:LEU:HB3	1:B:355:ILE:HG23	1.84	0.58
1:D:319:MET:O	1:D:322:ASN:CG	2.42	0.58
1:A:81:LEU:CD1	1:A:372:HIS:CE1	2.80	0.57
1:A:217:LYS:HB2	1:A:217:LYS:HZ2	1.69	0.57
1:B:70:ARG:O	1:B:73:THR:HG22	2.04	0.57
1:D:199:ASP:OD2	1:D:208:LYS:CD	2.51	0.57
1:D:542:PHE:N	1:D:543:PRO:CD	2.67	0.57
1:A:70:ARG:O	1:A:73:THR:HG22	2.04	0.57
1:C:199:ASP:OD2	1:C:208:LYS:CD	2.51	0.57
1:C:542:PHE:N	1:C:543:PRO:CD	2.67	0.57
1:A:154:ASN:HB3	1:A:542:PHE:CZ	2.38	0.57
1:A:373:THR:C	1:A:374:GLU:OE2	2.41	0.57
1:A:515:VAL:C	1:A:516:ASN:ND2	2.56	0.57
1:B:312:HIS:NE2	1:B:368:LYS:HD3	2.19	0.57
1:B:373:THR:C	1:B:374:GLU:OE2	2.41	0.57
1:B:542:PHE:N	1:B:543:PRO:CD	2.67	0.57
1:A:312:HIS:NE2	1:A:368:LYS:HD3	2.19	0.57
1:A:542:PHE:N	1:A:543:PRO:CD	2.67	0.57
1:C:290:LEU:CD2	1:C:311:MET:CG	2.72	0.57
1:C:406:TRP:CE3	1:C:439:MET:HB3	2.38	0.57
1:B:154:ASN:HB3	1:B:542:PHE:CZ	2.38	0.57
1:D:310:LEU:CD2	1:D:311:MET:HE2	2.35	0.57
1:A:290:LEU:CD2	1:A:311:MET:CG	2.72	0.57
1:A:370:ARG:HG3	1:A:377:PHE:N	2.19	0.57
1:C:310:LEU:CD2	1:C:311:MET:HE2	2.35	0.57
1:C:312:HIS:NE2	1:C:368:LYS:HD3	2.19	0.57
1:B:515:VAL:C	1:B:516:ASN:ND2	2.56	0.57
1:D:332:SER:H	1:D:335:VAL:HG22	1.68	0.57
1:D:406:TRP:CE3	1:D:439:MET:HB3	2.38	0.57
1:A:319:MET:O	1:A:322:ASN:CG	2.42	0.57
1:A:484:LEU:HD23	1:A:484:LEU:O	2.05	0.57
1:C:332:SER:H	1:C:335:VAL:HG22	1.68	0.57
1:D:312:HIS:NE2	1:D:368:LYS:HD3	2.19	0.57

*Continued on next page...*

*Continued from previous page...*

Atom-1	Atom-2	Interatomic distance (Å)	Clash overlap (Å)
1:D:330:LEU:HD12	1:D:330:LEU:O	2.05	0.57
1:B:310:LEU:HD22	1:B:311:MET:HE2	1.86	0.57
1:B:370:ARG:HG3	1:B:377:PHE:N	2.19	0.57
1:C:27:ASN:ND2	1:C:86:CYS:SG	2.78	0.57
1:C:484:LEU:HD23	1:C:484:LEU:O	2.05	0.57
1:B:317:SER:O	1:B:321:GLU:OE2	2.23	0.57
1:B:319:MET:O	1:B:322:ASN:CG	2.42	0.57
1:D:484:LEU:HD23	1:D:484:LEU:O	2.05	0.57
1:A:317:SER:O	1:A:321:GLU:OE2	2.23	0.57
1:C:479:LYS:HB3	1:C:479:LYS:HZ2	1.67	0.57
1:B:290:LEU:CD2	1:B:311:MET:CG	2.72	0.57
1:B:484:LEU:HD23	1:B:484:LEU:O	2.05	0.57
1:D:27:ASN:ND2	1:D:86:CYS:SG	2.78	0.57
1:D:290:LEU:CD2	1:D:311:MET:CG	2.72	0.57
1:C:155:ASP:HB3	1:C:158:MET:HB3	1.87	0.56
1:C:330:LEU:HD12	1:C:330:LEU:O	2.05	0.56
1:D:155:ASP:HB3	1:D:158:MET:HB3	1.87	0.56
1:C:199:ASP:OD2	1:C:208:LYS:HD2	2.05	0.56
1:B:27:ASN:ND2	1:B:86:CYS:SG	2.78	0.56
1:B:439:MET:HE2	1:B:450:PRO:HG2	1.86	0.56
1:D:186:TRP:HA	1:D:189:VAL:HG22	1.86	0.56
1:D:208:LYS:HB2	1:D:208:LYS:HZ3	1.69	0.56
1:D:360:LEU:C	1:D:361:ASN:OD1	2.44	0.56
1:A:27:ASN:ND2	1:A:86:CYS:SG	2.78	0.56
1:A:314:ASP:HA	1:A:366:HIS:HA	1.88	0.56
1:A:330:LEU:HD12	1:A:330:LEU:O	2.05	0.56
1:C:186:TRP:HA	1:C:189:VAL:HG22	1.86	0.56
1:C:216:LYS:HD2	1:C:219:THR:OG1	2.06	0.56
1:C:314:ASP:HA	1:C:366:HIS:HA	1.88	0.56
1:C:360:LEU:C	1:C:361:ASN:OD1	2.44	0.56
1:B:199:ASP:OD2	1:B:208:LYS:HD2	2.05	0.56
1:B:314:ASP:HA	1:B:366:HIS:HA	1.88	0.56
1:B:330:LEU:HD12	1:B:330:LEU:O	2.05	0.56
1:B:443:GLU:O	1:B:447:GLY:N	2.29	0.56
1:D:216:LYS:HD2	1:D:219:THR:OG1	2.06	0.56
1:D:515:VAL:C	1:D:516:ASN:ND2	2.56	0.56
1:C:515:VAL:C	1:C:516:ASN:ND2	2.56	0.56
1:D:199:ASP:OD2	1:D:208:LYS:HD2	2.05	0.56
1:D:314:ASP:HA	1:D:366:HIS:HA	1.88	0.56
1:A:443:GLU:O	1:A:447:GLY:N	2.29	0.56
1:D:343:ILE:O	1:D:347:MET:N	2.38	0.56

*Continued on next page...*



*Continued from previous page...*

Atom-1	Atom-2	Interatomic distance (Å)	Clash overlap (Å)
1:A:199:ASP:OD2	1:A:208:LYS:HD2	2.05	0.56
1:C:343:ILE:O	1:C:347:MET:N	2.38	0.56
1:B:53:LEU:CD2	1:B:126:ALA:HB2	2.31	0.56
1:B:155:ASP:HB3	1:B:158:MET:HB3	1.87	0.56
1:A:155:ASP:HB3	1:A:158:MET:HB3	1.87	0.56
1:A:370:ARG:HG2	1:A:376:TYR:O	2.04	0.56
1:B:370:ARG:HG2	1:B:376:TYR:O	2.04	0.56
1:C:317:SER:O	1:C:321:GLU:OE2	2.23	0.56
1:C:439:MET:HE2	1:C:450:PRO:HG2	1.86	0.56
1:A:53:LEU:CD2	1:A:126:ALA:HB2	2.31	0.56
1:A:343:ILE:O	1:A:347:MET:N	2.38	0.56
1:D:370:ARG:CG	1:D:377:PHE:CA	2.84	0.56
1:D:439:MET:HE2	1:D:450:PRO:HG2	1.86	0.56
1:C:370:ARG:CG	1:C:377:PHE:CA	2.84	0.55
1:B:216:LYS:O	1:B:219:THR:OG1	2.12	0.55
1:B:343:ILE:O	1:B:347:MET:N	2.38	0.55
1:D:317:SER:O	1:D:321:GLU:OE2	2.23	0.55
1:A:310:LEU:HD22	1:A:311:MET:HE2	1.87	0.55
1:A:439:MET:HE2	1:A:450:PRO:HG2	1.86	0.55
1:A:470:ARG:CG	1:A:489:TRP:CE2	2.90	0.55
1:C:208:LYS:HB2	1:C:208:LYS:HZ3	1.71	0.55
1:B:470:ARG:CG	1:B:489:TRP:CE2	2.90	0.55
1:D:370:ARG:HG2	1:D:376:TYR:O	2.04	0.55
1:D:449:VAL:CG1	1:D:450:PRO:HD2	2.37	0.55
1:B:310:LEU:CD2	1:B:311:MET:HE2	2.37	0.55
1:A:216:LYS:O	1:A:219:THR:OG1	2.12	0.55
1:A:316:GLN:O	1:A:320:LYS:NZ	2.40	0.55
1:C:449:VAL:CG1	1:C:450:PRO:HD2	2.37	0.55
1:B:170:SER:C	1:B:173:ILE:N	2.60	0.55
1:A:170:SER:C	1:A:173:ILE:N	2.60	0.55
1:A:216:LYS:HD2	1:A:219:THR:OG1	2.06	0.55
1:C:345:ARG:HE	1:C:345:ARG:CA	2.20	0.55
1:C:370:ARG:HG2	1:C:376:TYR:O	2.04	0.55
1:B:216:LYS:HD2	1:B:219:THR:OG1	2.06	0.55
1:B:316:GLN:O	1:B:320:LYS:NZ	2.40	0.55
1:D:345:ARG:HE	1:D:345:ARG:CA	2.20	0.55
1:D:479:LYS:HB3	1:D:479:LYS:HZ2	1.69	0.55
1:D:490:HIS:O	1:D:496:ARG:NH1	2.40	0.55
1:C:490:HIS:O	1:C:496:ARG:NH1	2.40	0.55
1:B:345:ARG:HE	1:B:345:ARG:CA	2.20	0.55
1:A:310:LEU:CD2	1:A:311:MET:HE2	2.37	0.54

*Continued on next page...*



*Continued from previous page...*

Atom-1	Atom-2	Interatomic distance (Å)	Clash overlap (Å)
1:A:345:ARG:CA	1:A:345:ARG:HE	2.20	0.54
1:B:331:PHE:HB3	1:B:336:VAL:HG22	1.89	0.54
1:A:331:PHE:HB3	1:A:336:VAL:HG22	1.89	0.54
1:C:170:SER:C	1:C:173:ILE:N	2.60	0.54
1:B:366:HIS:CD2	1:B:382:CYS:HB2	2.43	0.54
1:D:315:LEU:HD13	1:D:367:LEU:CD1	2.37	0.54
1:D:470:ARG:CG	1:D:489:TRP:CE2	2.90	0.54
1:A:315:LEU:HD13	1:A:367:LEU:CD1	2.37	0.54
1:A:366:HIS:CD2	1:A:382:CYS:HB2	2.43	0.54
1:A:411:VAL:O	1:A:414:GLU:CD	2.46	0.54
1:C:55:LEU:HB2	1:D:23:ASP:HB3	1.90	0.54
1:B:360:LEU:C	1:B:361:ASN:OD1	2.44	0.54
1:B:411:VAL:O	1:B:414:GLU:CD	2.46	0.54
1:D:170:SER:C	1:D:173:ILE:N	2.60	0.54
1:A:360:LEU:C	1:A:361:ASN:OD1	2.44	0.54
1:C:65:LEU:HA	1:C:122:GLU:HG2	1.90	0.54
1:C:315:LEU:HD13	1:C:367:LEU:CD1	2.37	0.54
1:C:316:GLN:O	1:C:320:LYS:NZ	2.40	0.54
1:C:470:ARG:CG	1:C:489:TRP:CE2	2.90	0.54
1:B:315:LEU:HD13	1:B:367:LEU:CD1	2.37	0.54
1:D:316:GLN:O	1:D:320:LYS:NZ	2.40	0.54
1:A:116:TYR:CD1	1:A:514:VAL:HG21	2.43	0.54
1:A:310:LEU:CD2	1:A:311:MET:CE	2.86	0.54
1:A:470:ARG:HH21	1:A:486:LYS:HE2	1.73	0.54
1:C:331:PHE:HB3	1:C:336:VAL:HG22	1.89	0.54
1:B:116:TYR:CD1	1:B:514:VAL:HG21	2.43	0.54
1:B:470:ARG:HH21	1:B:486:LYS:HE2	1.73	0.54
1:A:65:LEU:HA	1:A:122:GLU:HG2	1.90	0.54
1:C:199:ASP:OD1	1:C:199:ASP:N	2.41	0.54
1:C:366:HIS:CD2	1:C:382:CYS:HB2	2.43	0.54
1:B:310:LEU:CD2	1:B:311:MET:CE	2.86	0.54
1:B:490:HIS:O	1:B:496:ARG:NH1	2.40	0.54
1:D:65:LEU:HA	1:D:122:GLU:HG2	1.90	0.54
1:D:366:HIS:CD2	1:D:382:CYS:HB2	2.43	0.54
1:A:490:HIS:O	1:A:496:ARG:NH1	2.40	0.54
1:C:411:VAL:O	1:C:414:GLU:CD	2.46	0.54
1:D:199:ASP:N	1:D:199:ASP:OD1	2.41	0.54
1:D:331:PHE:HB3	1:D:336:VAL:HG22	1.89	0.54
1:A:429:THR:OG1	1:A:432:ALA:CB	2.56	0.54
1:C:116:TYR:CD1	1:C:514:VAL:HG21	2.43	0.54
1:B:65:LEU:HA	1:B:122:GLU:HG2	1.90	0.54

*Continued on next page...*

*Continued from previous page...*

Atom-1	Atom-2	Interatomic distance (Å)	Clash overlap (Å)
1:B:199:ASP:OD1	1:B:199:ASP:N	2.41	0.54
1:B:429:THR:OG1	1:B:432:ALA:CB	2.56	0.54
1:D:116:TYR:CD1	1:D:514:VAL:HG21	2.43	0.54
1:A:199:ASP:N	1:A:199:ASP:OD1	2.41	0.53
1:A:504:ARG:HA	1:A:507:ARG:HE	1.72	0.53
1:B:473:PHE:HB3	1:B:474:PRO:HD2	1.91	0.53
1:B:504:ARG:HA	1:B:507:ARG:HE	1.72	0.53
1:D:411:VAL:O	1:D:414:GLU:CD	2.46	0.53
1:C:321:GLU:H	1:C:321:GLU:CD	2.12	0.53
1:D:473:PHE:HB3	1:D:474:PRO:HD2	1.91	0.53
1:A:311:MET:SD	1:A:366:HIS:CE1	3.01	0.53
1:A:473:PHE:HB3	1:A:474:PRO:HD2	1.91	0.53
1:C:473:PHE:HB3	1:C:474:PRO:HD2	1.91	0.53
1:B:217:LYS:HB2	1:B:217:LYS:HZ2	1.73	0.53
1:B:311:MET:SD	1:B:366:HIS:CE1	3.01	0.53
1:D:368:LYS:O	1:D:377:PHE:CD1	2.62	0.53
1:A:429:THR:OG1	1:A:432:ALA:HB2	2.09	0.53
1:C:107:GLU:HA	1:C:110:ILE:HG12	1.89	0.53
1:C:310:LEU:CD2	1:C:311:MET:CE	2.86	0.53
1:C:368:LYS:O	1:C:377:PHE:CD1	2.62	0.53
1:C:429:THR:OG1	1:C:432:ALA:HB2	2.09	0.53
1:B:429:THR:OG1	1:B:432:ALA:HB2	2.09	0.53
1:D:310:LEU:CD2	1:D:311:MET:CE	2.86	0.53
1:D:321:GLU:H	1:D:321:GLU:CD	2.12	0.53
1:D:429:THR:OG1	1:D:432:ALA:HB2	2.09	0.53
1:A:107:GLU:HA	1:A:110:ILE:HG12	1.89	0.53
1:B:107:GLU:HA	1:B:110:ILE:HG12	1.89	0.53
1:B:314:ASP:CG	1:B:366:HIS:CE1	2.82	0.53
1:D:107:GLU:HA	1:D:110:ILE:HG12	1.89	0.53
1:C:311:MET:SD	1:C:366:HIS:CE1	3.01	0.53
1:C:429:THR:OG1	1:C:432:ALA:CB	2.56	0.53
1:D:311:MET:SD	1:D:366:HIS:CE1	3.01	0.53
1:A:314:ASP:CG	1:A:366:HIS:CE1	2.82	0.53
1:C:505:ILE:CD1	1:C:531:CYS:HB3	2.36	0.53
1:D:505:ILE:CD1	1:D:531:CYS:HB3	2.36	0.53
1:C:314:ASP:CG	1:C:366:HIS:CE1	2.82	0.53
1:C:439:MET:CE	1:C:450:PRO:CG	2.86	0.53
1:C:504:ARG:HA	1:C:507:ARG:HE	1.72	0.53
1:D:429:THR:OG1	1:D:432:ALA:CB	2.56	0.53
1:A:281:LEU:HD11	1:A:385:GLY:HA3	1.91	0.53
1:B:281:LEU:HD11	1:B:385:GLY:HA3	1.91	0.53

*Continued on next page...*

*Continued from previous page...*

Atom-1	Atom-2	Interatomic distance (Å)	Clash overlap (Å)
1:D:439:MET:CE	1:D:450:PRO:CG	2.87	0.53
1:D:504:ARG:HA	1:D:507:ARG:HE	1.72	0.53
1:B:439:MET:CE	1:B:450:PRO:CG	2.86	0.53
1:D:314:ASP:CG	1:D:366:HIS:CE1	2.82	0.53
1:A:439:MET:CE	1:A:450:PRO:CG	2.87	0.52
1:A:442:PHE:CZ	1:A:489:TRP:HE3	2.25	0.52
1:B:368:LYS:O	1:B:377:PHE:CD1	2.62	0.52
1:B:442:PHE:CZ	1:B:489:TRP:HE3	2.25	0.52
1:A:124:ILE:HG23	1:A:145:PHE:CE2	2.45	0.52
1:A:169:LEU:HD11	1:A:557:PRO:CG	2.38	0.52
1:A:370:ARG:CG	1:A:377:PHE:CA	2.84	0.52
1:C:23:ASP:HB3	1:D:55:LEU:HB2	1.92	0.52
1:C:443:GLU:O	1:C:447:GLY:N	2.29	0.52
1:B:124:ILE:HG23	1:B:145:PHE:CE2	2.45	0.52
1:B:370:ARG:CG	1:B:377:PHE:CA	2.84	0.52
1:D:443:GLU:O	1:D:447:GLY:N	2.29	0.52
1:A:287:SER:O	1:A:378:HIS:CE1	2.62	0.52
1:A:368:LYS:O	1:A:377:PHE:CD1	2.62	0.52
1:A:321:GLU:H	1:A:321:GLU:CD	2.12	0.52
1:C:310:LEU:HD22	1:C:311:MET:CE	2.40	0.52
1:B:169:LEU:HD11	1:B:557:PRO:CG	2.38	0.52
1:D:169:LEU:HD11	1:D:557:PRO:CG	2.38	0.52
1:D:310:LEU:HD22	1:D:311:MET:CE	2.39	0.52
1:A:310:LEU:HD22	1:A:311:MET:CE	2.39	0.52
1:C:169:LEU:HD11	1:C:557:PRO:CG	2.38	0.52
1:B:287:SER:O	1:B:378:HIS:CE1	2.62	0.52
1:B:310:LEU:HD22	1:B:311:MET:CE	2.39	0.52
1:A:505:ILE:CD1	1:A:531:CYS:HB3	2.36	0.52
1:C:281:LEU:HD11	1:C:385:GLY:HA3	1.91	0.52
1:B:321:GLU:H	1:B:321:GLU:CD	2.12	0.52
1:D:281:LEU:HD11	1:D:385:GLY:HA3	1.91	0.52
1:B:345:ARG:HE	1:B:345:ARG:HA	1.75	0.52
1:B:429:THR:OG1	1:B:432:ALA:N	2.41	0.52
1:A:310:LEU:CD2	1:A:311:MET:N	2.53	0.52
1:A:345:ARG:HE	1:A:345:ARG:HA	1.75	0.52
1:C:335:VAL:HG12	1:C:376:TYR:CD2	2.44	0.52
1:B:310:LEU:CD2	1:B:311:MET:N	2.53	0.52
1:B:315:LEU:HD13	1:B:367:LEU:HD11	1.92	0.52
1:B:505:ILE:CD1	1:B:531:CYS:HB3	2.36	0.52
1:D:370:ARG:CG	1:D:377:PHE:N	2.73	0.52
1:A:315:LEU:HD13	1:A:367:LEU:HD11	1.92	0.52

*Continued on next page...*

*Continued from previous page...*

Atom-1	Atom-2	Interatomic distance (Å)	Clash overlap (Å)
1:A:370:ARG:CG	1:A:377:PHE:N	2.73	0.52
1:C:287:SER:O	1:C:378:HIS:CE1	2.62	0.52
1:B:370:ARG:CG	1:B:377:PHE:N	2.73	0.52
1:C:370:ARG:CG	1:C:377:PHE:N	2.73	0.51
1:D:335:VAL:HG12	1:D:376:TYR:CD2	2.44	0.51
1:D:170:SER:CA	1:D:173:ILE:N	2.73	0.51
1:D:408:ALA:CA	1:D:435:TYR:CD2	2.74	0.51
1:A:335:VAL:HG12	1:A:376:TYR:CD2	2.44	0.51
1:C:170:SER:CA	1:C:173:ILE:N	2.72	0.51
1:C:345:ARG:HE	1:C:345:ARG:HA	1.75	0.51
1:B:335:VAL:HG12	1:B:376:TYR:CD2	2.44	0.51
1:D:287:SER:O	1:D:378:HIS:CE1	2.62	0.51
1:D:315:LEU:HD13	1:D:367:LEU:HD11	1.92	0.51
1:D:345:ARG:HE	1:D:345:ARG:HA	1.75	0.51
1:B:570:LYS:NZ	1:B:570:LYS:CB	2.73	0.51
1:D:124:ILE:HG23	1:D:145:PHE:CE2	2.45	0.51
1:C:315:LEU:HD13	1:C:367:LEU:HD11	1.92	0.51
1:A:570:LYS:NZ	1:A:570:LYS:CB	2.73	0.51
1:C:53:LEU:HG	1:C:126:ALA:HB2	1.91	0.51
1:C:124:ILE:HG23	1:C:145:PHE:CE2	2.45	0.51
1:C:442:PHE:CG	1:C:473:PHE:HZ	2.29	0.51
1:D:442:PHE:CG	1:D:473:PHE:HZ	2.29	0.51
1:A:104:ASP:OD1	1:A:181:TRP:NE1	2.40	0.51
1:C:408:ALA:CA	1:C:435:TYR:CD2	2.74	0.51
1:B:104:ASP:OD1	1:B:181:TRP:NE1	2.40	0.51
1:B:449:VAL:CG1	1:B:450:PRO:HD2	2.37	0.51
1:A:449:VAL:CG1	1:A:450:PRO:HD2	2.37	0.51
1:C:104:ASP:OD1	1:C:181:TRP:NE1	2.40	0.51
1:C:341:LEU:HD21	1:C:345:ARG:HG3	1.93	0.51
1:D:53:LEU:HG	1:D:126:ALA:HB2	1.91	0.51
1:B:53:LEU:HD21	1:B:126:ALA:HB2	1.93	0.51
1:B:53:LEU:HG	1:B:126:ALA:HB2	1.91	0.51
1:A:53:LEU:HD21	1:A:126:ALA:HB2	1.93	0.51
1:A:53:LEU:HG	1:A:126:ALA:HB2	1.91	0.51
1:A:71:GLU:OE2	1:A:74:ARG:NH1	2.44	0.51
1:B:71:GLU:OE2	1:B:74:ARG:NH1	2.44	0.51
1:D:341:LEU:HD21	1:D:345:ARG:HG3	1.93	0.51
1:D:104:ASP:OD1	1:D:181:TRP:NE1	2.40	0.50
1:A:430:HIS:O	1:A:433:ASP:OD1	2.30	0.50
1:C:429:THR:OG1	1:C:432:ALA:N	2.41	0.50
1:B:368:LYS:O	1:B:377:PHE:HD1	1.95	0.50

*Continued on next page...*

*Continued from previous page...*

Atom-1	Atom-2	Interatomic distance (Å)	Clash overlap (Å)
1:B:430:HIS:O	1:B:433:ASP:OD1	2.30	0.50
1:A:170:SER:CA	1:A:173:ILE:N	2.73	0.50
1:A:368:LYS:O	1:A:377:PHE:HD1	1.95	0.50
1:D:430:HIS:O	1:D:433:ASP:OD1	2.29	0.50
1:A:408:ALA:CB	1:A:411:VAL:HG22	2.39	0.50
1:C:430:HIS:O	1:C:433:ASP:OD1	2.30	0.50
1:B:170:SER:CA	1:B:173:ILE:N	2.73	0.50
1:C:71:GLU:OE2	1:C:74:ARG:NH1	2.44	0.50
1:B:408:ALA:CB	1:B:411:VAL:HG22	2.39	0.50
1:D:71:GLU:OE2	1:D:74:ARG:NH1	2.44	0.50
1:D:74:ARG:NH2	1:D:376:TYR:HE1	2.09	0.50
1:A:541:LYS:HB3	1:A:541:LYS:HZ3	1.75	0.50
1:C:314:ASP:CG	1:C:366:HIS:ND1	2.65	0.50
1:C:368:LYS:O	1:C:377:PHE:HD1	1.95	0.50
1:D:368:LYS:O	1:D:377:PHE:HD1	1.95	0.50
1:D:429:THR:OG1	1:D:432:ALA:N	2.41	0.50
1:D:470:ARG:HH21	1:D:486:LYS:HE2	1.73	0.50
1:C:74:ARG:NH2	1:C:376:TYR:HE1	2.09	0.50
1:A:516:ASN:HD22	1:A:516:ASN:N	2.08	0.50
1:C:408:ALA:CB	1:C:411:VAL:HG22	2.39	0.50
1:C:470:ARG:HH21	1:C:486:LYS:HE2	1.73	0.50
1:B:516:ASN:HD22	1:B:516:ASN:N	2.08	0.50
1:D:216:LYS:O	1:D:219:THR:OG1	2.12	0.50
1:D:314:ASP:CG	1:D:366:HIS:ND1	2.65	0.50
1:D:442:PHE:CZ	1:D:489:TRP:HE3	2.25	0.50
1:A:199:ASP:HB3	1:A:208:LYS:HG2	1.94	0.50
1:B:199:ASP:HB3	1:B:208:LYS:HG2	1.94	0.50
1:A:442:PHE:CG	1:A:473:PHE:HZ	2.29	0.49
1:C:199:ASP:CB	1:C:208:LYS:CD	2.83	0.49
1:C:505:ILE:HD11	1:C:531:CYS:C	2.32	0.49
1:B:442:PHE:CG	1:B:473:PHE:HZ	2.29	0.49
1:B:505:ILE:HD11	1:B:531:CYS:C	2.32	0.49
1:D:41:ALA:HB1	1:D:117:PHE:HE2	1.77	0.49
1:D:505:ILE:HD11	1:D:531:CYS:C	2.32	0.49
1:A:505:ILE:HD11	1:A:531:CYS:C	2.32	0.49
1:C:41:ALA:HB1	1:C:117:PHE:HE2	1.77	0.49
1:C:199:ASP:HB3	1:C:208:LYS:HG2	1.94	0.49
1:B:57:GLU:OE1	1:B:57:GLU:N	2.43	0.49
1:D:199:ASP:CB	1:D:208:LYS:CD	2.83	0.49
1:D:199:ASP:HB3	1:D:208:LYS:HG2	1.94	0.49
1:D:408:ALA:CB	1:D:411:VAL:HG22	2.39	0.49

*Continued on next page...*

*Continued from previous page...*

Atom-1	Atom-2	Interatomic distance (Å)	Clash overlap (Å)
1:A:57:GLU:OE1	1:A:57:GLU:N	2.43	0.49
1:C:216:LYS:O	1:C:219:THR:OG1	2.12	0.49
1:B:314:ASP:CG	1:B:366:HIS:ND1	2.65	0.49
1:A:314:ASP:CG	1:A:366:HIS:ND1	2.65	0.49
1:A:341:LEU:HD21	1:A:345:ARG:HG3	1.93	0.49
1:B:341:LEU:HD21	1:B:345:ARG:HG3	1.93	0.49
1:B:516:ASN:ND2	1:B:516:ASN:N	2.60	0.49
1:A:516:ASN:ND2	1:A:516:ASN:N	2.60	0.49
1:C:284:LEU:HD23	1:C:353:ASN:ND2	2.26	0.49
1:C:442:PHE:CZ	1:C:489:TRP:HE3	2.25	0.49
1:C:516:ASN:ND2	1:C:516:ASN:N	2.60	0.49
1:B:41:ALA:HB1	1:B:117:PHE:HE2	1.76	0.49
1:A:23:ASP:HB3	1:B:55:LEU:HB2	1.93	0.49
1:C:333:ILE:O	1:C:337:ILE:CG1	2.61	0.49
1:D:284:LEU:HD23	1:D:353:ASN:ND2	2.26	0.49
1:D:333:ILE:O	1:D:337:ILE:CG1	2.61	0.49
1:D:516:ASN:ND2	1:D:516:ASN:N	2.60	0.49
1:A:41:ALA:HB1	1:A:117:PHE:HE2	1.77	0.49
1:A:411:VAL:O	1:A:414:GLU:OE1	2.31	0.49
1:A:554:ASN:O	1:A:557:PRO:HD2	2.13	0.49
1:B:411:VAL:O	1:B:414:GLU:OE1	2.31	0.49
1:A:184:ASP:N	1:A:184:ASP:OD1	2.46	0.49
1:B:199:ASP:OD2	1:B:208:LYS:HD3	2.13	0.49
1:A:333:ILE:O	1:A:337:ILE:CG1	2.61	0.49
1:A:338:ASP:OD1	1:A:342:GLN:NE2	2.46	0.49
1:B:333:ILE:O	1:B:337:ILE:CG1	2.61	0.49
1:B:338:ASP:OD1	1:B:342:GLN:NE2	2.46	0.49
1:B:554:ASN:O	1:B:557:PRO:HD2	2.13	0.49
1:A:199:ASP:OD2	1:A:208:LYS:HD3	2.13	0.49
1:B:284:LEU:HD23	1:B:353:ASN:ND2	2.26	0.49
1:C:57:GLU:OE1	1:C:57:GLU:N	2.43	0.48
1:A:284:LEU:HD23	1:A:353:ASN:ND2	2.26	0.48
1:C:338:ASP:OD1	1:C:342:GLN:NE2	2.46	0.48
1:C:492:GLU:HB2	1:C:495:GLN:NE2	2.29	0.48
1:C:570:LYS:HB2	1:C:570:LYS:HZ3	1.77	0.48
1:B:184:ASP:OD1	1:B:184:ASP:N	2.46	0.48
1:D:57:GLU:OE1	1:D:57:GLU:N	2.43	0.48
1:D:121:VAL:HG11	1:D:564:ARG:NH1	2.11	0.48
1:D:338:ASP:OD1	1:D:342:GLN:NE2	2.46	0.48
1:D:492:GLU:HB2	1:D:495:GLN:NE2	2.29	0.48
1:B:411:VAL:HG11	1:B:427:LYS:CB	2.38	0.48

*Continued on next page...*

*Continued from previous page...*

Atom-1	Atom-2	Interatomic distance (Å)	Clash overlap (Å)
1:C:173:ILE:HB	1:C:176:ARG:CB	2.44	0.48
1:B:360:LEU:HB3	1:B:436:SER:CB	2.43	0.48
1:D:173:ILE:HB	1:D:176:ARG:CB	2.44	0.48
1:C:556:ILE:N	1:C:557:PRO:HD2	2.29	0.48
1:D:556:ILE:N	1:D:557:PRO:HD2	2.29	0.48
1:D:570:LYS:HB2	1:D:570:LYS:HZ3	1.77	0.48
1:A:411:VAL:HG11	1:A:427:LYS:CB	2.37	0.48
1:B:312:HIS:NE2	1:B:368:LYS:CE	2.76	0.48
1:B:470:ARG:HD3	1:B:489:TRP:CG	2.36	0.48
1:D:310:LEU:HD21	1:D:311:MET:O	2.14	0.48
1:A:312:HIS:NE2	1:A:368:LYS:CE	2.76	0.48
1:B:556:ILE:N	1:B:557:PRO:HD2	2.29	0.48
1:D:411:VAL:O	1:D:414:GLU:OE1	2.31	0.48
1:A:95:LYS:O	1:A:99:LEU:HB2	2.13	0.48
1:A:556:ILE:N	1:A:557:PRO:HD2	2.29	0.48
1:C:310:LEU:HD21	1:C:311:MET:O	2.14	0.48
1:C:411:VAL:O	1:C:414:GLU:OE1	2.31	0.48
1:B:95:LYS:O	1:B:99:LEU:HB2	2.14	0.48
1:D:312:HIS:NE2	1:D:368:LYS:CE	2.76	0.48
1:A:429:THR:OG1	1:A:432:ALA:N	2.41	0.48
1:A:470:ARG:HD3	1:A:489:TRP:CG	2.36	0.48
1:C:184:ASP:OD1	1:C:185:ARG:N	2.47	0.48
1:C:199:ASP:OD2	1:C:208:LYS:HD3	2.13	0.48
1:C:312:HIS:NE2	1:C:368:LYS:CE	2.76	0.48
1:A:411:VAL:O	1:A:414:GLU:OE2	2.31	0.48
1:A:415:MET:N	1:A:415:MET:HE3	2.29	0.48
1:C:121:VAL:HG11	1:C:564:ARG:NH1	2.11	0.48
1:B:37:LEU:CD1	1:B:177:PHE:HE1	2.25	0.48
1:B:411:VAL:O	1:B:414:GLU:OE2	2.31	0.48
1:B:492:GLU:HB2	1:B:495:GLN:NE2	2.29	0.48
1:D:184:ASP:OD1	1:D:185:ARG:N	2.47	0.48
1:D:199:ASP:OD2	1:D:208:LYS:HD3	2.13	0.48
1:A:492:GLU:HB2	1:A:495:GLN:NE2	2.29	0.47
1:C:95:LYS:O	1:C:99:LEU:HB2	2.14	0.47
1:B:415:MET:N	1:B:415:MET:HE3	2.29	0.47
1:D:95:LYS:O	1:D:99:LEU:HB2	2.13	0.47
1:D:216:LYS:CA	1:D:219:THR:HG23	2.43	0.47
1:A:37:LEU:CD1	1:A:177:PHE:HE1	2.25	0.47
1:C:312:HIS:NE2	1:C:368:LYS:CD	2.76	0.47
1:C:554:ASN:O	1:C:557:PRO:HD2	2.13	0.47
1:A:216:LYS:CA	1:A:219:THR:HG23	2.43	0.47

*Continued on next page...*



*Continued from previous page...*

Atom-1	Atom-2	Interatomic distance (Å)	Clash overlap (Å)
1:C:216:LYS:CA	1:C:219:THR:HG23	2.43	0.47
1:C:404:VAL:O	1:C:404:VAL:CG1	2.62	0.47
1:D:411:VAL:O	1:D:414:GLU:OE2	2.31	0.47
1:D:554:ASN:O	1:D:557:PRO:HD2	2.13	0.47
1:C:360:LEU:HB3	1:C:436:SER:CB	2.43	0.47
1:C:411:VAL:O	1:C:414:GLU:OE2	2.31	0.47
1:B:74:ARG:NH2	1:B:376:TYR:HE1	2.09	0.47
1:B:216:LYS:CA	1:B:219:THR:HG23	2.43	0.47
1:D:53:LEU:HD23	1:D:53:LEU:HA	1.78	0.47
1:D:312:HIS:NE2	1:D:368:LYS:CD	2.76	0.47
1:A:74:ARG:NH2	1:A:376:TYR:HE1	2.09	0.47
1:A:361:ASN:O	1:A:364:ASN:N	2.45	0.47
1:C:439:MET:SD	1:C:442:PHE:CE2	3.08	0.47
1:B:361:ASN:O	1:B:364:ASN:N	2.45	0.47
1:D:404:VAL:O	1:D:404:VAL:CG1	2.62	0.47
1:C:439:MET:CE	1:C:442:PHE:HD2	2.27	0.47
1:B:310:LEU:HD21	1:B:311:MET:O	2.14	0.47
1:B:487:ARG:HG2	1:B:532:TRP:CD1	2.50	0.47
1:D:81:LEU:CD1	1:D:372:HIS:CE1	2.80	0.47
1:D:360:LEU:HB3	1:D:436:SER:CB	2.43	0.47
1:D:439:MET:SD	1:D:442:PHE:CE2	3.08	0.47
1:A:33:LEU:CD2	1:A:177:PHE:HD1	2.24	0.47
1:A:169:LEU:HD21	1:A:557:PRO:CG	2.44	0.47
1:A:199:ASP:CB	1:A:208:LYS:CD	2.83	0.47
1:A:310:LEU:HD21	1:A:311:MET:O	2.14	0.47
1:A:409:PRO:O	1:A:412:LEU:HB2	2.14	0.47
1:A:439:MET:SD	1:A:442:PHE:CE2	3.08	0.47
1:A:487:ARG:HG2	1:A:532:TRP:CD1	2.50	0.47
1:C:55:LEU:HD22	1:D:20:LEU:HB3	1.94	0.47
1:C:313:LYS:HD2	1:C:318:TYR:OH	2.15	0.47
1:C:341:LEU:CD2	1:C:345:ARG:HG3	2.45	0.47
1:C:409:PRO:O	1:C:412:LEU:HB2	2.14	0.47
1:C:487:ARG:HG2	1:C:532:TRP:CD1	2.50	0.47
1:B:33:LEU:CD2	1:B:177:PHE:HD1	2.24	0.47
1:B:439:MET:SD	1:B:442:PHE:CE2	3.08	0.47
1:D:313:LYS:HD2	1:D:318:TYR:OH	2.15	0.47
1:D:341:LEU:CD2	1:D:345:ARG:HG3	2.45	0.47
1:D:409:PRO:O	1:D:412:LEU:HB2	2.14	0.47
1:D:415:MET:N	1:D:415:MET:HE3	2.29	0.47
1:D:487:ARG:HG2	1:D:532:TRP:CD1	2.50	0.47
1:A:173:ILE:HB	1:A:176:ARG:CB	2.44	0.47

*Continued on next page...*

*Continued from previous page...*

Atom-1	Atom-2	Interatomic distance (Å)	Clash overlap (Å)
1:C:88:ASP:O	1:C:95:LYS:HE3	2.15	0.47
1:C:415:MET:N	1:C:415:MET:HE3	2.29	0.47
1:B:169:LEU:HD21	1:B:557:PRO:CG	2.44	0.47
1:D:439:MET:CE	1:D:442:PHE:HD2	2.27	0.47
1:B:53:LEU:CG	1:B:126:ALA:HB2	2.45	0.47
1:B:199:ASP:CB	1:B:208:LYS:CD	2.83	0.47
1:B:409:PRO:O	1:B:412:LEU:HB2	2.14	0.47
1:D:88:ASP:O	1:D:95:LYS:HE3	2.15	0.47
1:A:53:LEU:CG	1:A:126:ALA:HB2	2.45	0.47
1:A:529:VAL:HG22	1:A:530:ASP:H	1.80	0.47
1:B:173:ILE:HB	1:B:176:ARG:CB	2.44	0.47
1:B:529:VAL:HG22	1:B:530:ASP:H	1.80	0.47
1:A:439:MET:CE	1:A:442:PHE:HD2	2.27	0.46
1:C:81:LEU:CD1	1:C:372:HIS:CE1	2.80	0.46
1:C:529:VAL:HG22	1:C:530:ASP:H	1.80	0.46
1:A:354:ASP:O	1:A:356:PHE:CE2	2.69	0.46
1:B:53:LEU:HD23	1:B:53:LEU:HA	1.79	0.46
1:B:354:ASP:O	1:B:356:PHE:CE2	2.69	0.46
1:B:439:MET:CE	1:B:442:PHE:HD2	2.27	0.46
1:A:341:LEU:CD2	1:A:345:ARG:HG3	2.45	0.46
1:B:208:LYS:HB2	1:B:208:LYS:HZ2	1.78	0.46
1:B:341:LEU:CD2	1:B:345:ARG:HG3	2.45	0.46
1:B:411:VAL:C	1:B:414:GLU:OE2	2.54	0.46
1:D:489:TRP:O	1:D:489:TRP:HD1	1.99	0.46
1:A:53:LEU:HD23	1:A:53:LEU:HA	1.78	0.46
1:A:411:VAL:C	1:A:414:GLU:OE2	2.54	0.46
1:C:489:TRP:HD1	1:C:489:TRP:O	1.99	0.46
1:B:54:LYS:HB2	1:B:57:GLU:OE2	2.15	0.46
1:A:54:LYS:HB2	1:A:57:GLU:OE2	2.15	0.46
1:A:360:LEU:HB3	1:A:436:SER:CB	2.43	0.46
1:A:479:LYS:HB3	1:A:479:LYS:HZ2	1.77	0.46
1:C:335:VAL:O	1:C:339:ILE:HG13	2.16	0.46
1:D:529:VAL:HG22	1:D:530:ASP:H	1.80	0.46
1:A:182:ARG:NH1	1:D:190:GLU:OE1	2.49	0.46
1:A:208:LYS:HB2	1:A:208:LYS:HZ2	1.78	0.46
1:A:216:LYS:HA	1:A:219:THR:HG21	1.96	0.46
1:A:404:VAL:O	1:A:404:VAL:CG1	2.62	0.46
1:A:570:LYS:HB2	1:A:570:LYS:HZ2	1.79	0.46
1:C:169:LEU:HD21	1:C:557:PRO:CG	2.44	0.46
1:D:54:LYS:HB2	1:D:57:GLU:OE2	2.15	0.46
1:D:335:VAL:O	1:D:339:ILE:HG13	2.16	0.46

*Continued on next page...*

*Continued from previous page...*

Atom-1	Atom-2	Interatomic distance (Å)	Clash overlap (Å)
1:C:335:VAL:HG12	1:C:376:TYR:CE2	2.51	0.46
1:C:354:ASP:O	1:C:356:PHE:CE2	2.69	0.46
1:C:449:VAL:HG13	1:C:450:PRO:CD	2.43	0.46
1:B:404:VAL:O	1:B:404:VAL:CG1	2.62	0.46
1:D:169:LEU:HD21	1:D:557:PRO:CG	2.44	0.46
1:D:354:ASP:O	1:D:356:PHE:CE2	2.69	0.46
1:D:449:VAL:HG13	1:D:450:PRO:CD	2.43	0.46
1:A:313:LYS:HD2	1:A:318:TYR:OH	2.15	0.46
1:A:470:ARG:HD2	1:A:489:TRP:CD1	2.41	0.46
1:C:54:LYS:HB2	1:C:57:GLU:OE2	2.15	0.46
1:B:216:LYS:HA	1:B:219:THR:HG21	1.96	0.46
1:B:470:ARG:HD2	1:B:489:TRP:CD1	2.41	0.46
1:D:356:PHE:CE1	1:D:430:HIS:HA	2.51	0.46
1:D:570:LYS:NZ	1:D:570:LYS:CB	2.73	0.46
1:A:335:VAL:O	1:A:339:ILE:HG13	2.16	0.46
1:A:570:LYS:HZ3	1:A:570:LYS:CB	2.27	0.46
1:C:20:LEU:HB3	1:D:55:LEU:HD22	1.97	0.46
1:C:370:ARG:HB2	1:C:373:THR:OG1	2.16	0.46
1:C:411:VAL:C	1:C:414:GLU:OE2	2.54	0.46
1:C:412:LEU:C	1:C:414:GLU:OE1	2.55	0.46
1:B:313:LYS:HD2	1:B:318:TYR:OH	2.15	0.46
1:B:335:VAL:O	1:B:339:ILE:HG13	2.16	0.46
1:B:490:HIS:O	1:B:496:ARG:CZ	2.64	0.46
1:D:335:VAL:HG12	1:D:376:TYR:CE2	2.51	0.46
1:D:370:ARG:HB2	1:D:373:THR:OG1	2.16	0.46
1:D:411:VAL:C	1:D:414:GLU:OE2	2.54	0.46
1:D:412:LEU:C	1:D:414:GLU:OE1	2.55	0.46
1:D:446:THR:HG23	1:D:473:PHE:CD2	2.51	0.46
1:D:490:HIS:O	1:D:496:ARG:CZ	2.64	0.46
1:A:490:HIS:O	1:A:496:ARG:CZ	2.64	0.46
1:C:88:ASP:OD1	1:C:89:ASN:N	2.49	0.46
1:C:184:ASP:OD1	1:C:184:ASP:N	2.46	0.46
1:C:356:PHE:CE1	1:C:430:HIS:HA	2.51	0.46
1:C:446:THR:HG23	1:C:473:PHE:CD2	2.51	0.46
1:C:470:ARG:CB	1:C:489:TRP:HE1	2.02	0.46
1:C:490:HIS:O	1:C:496:ARG:CZ	2.64	0.46
1:B:356:PHE:CE1	1:B:430:HIS:HA	2.51	0.46
1:A:88:ASP:OD1	1:A:89:ASN:N	2.49	0.45
1:A:171:ARG:O	1:A:173:ILE:CA	2.64	0.45
1:A:356:PHE:CE1	1:A:430:HIS:HA	2.51	0.45
1:B:88:ASP:OD1	1:B:89:ASN:N	2.49	0.45

*Continued on next page...*

*Continued from previous page...*

Atom-1	Atom-2	Interatomic distance (Å)	Clash overlap (Å)
1:D:21:GLN:HE21	1:D:28:GLN:HB2	1.81	0.45
1:D:88:ASP:OD1	1:D:89:ASN:N	2.49	0.45
1:D:171:ARG:O	1:D:173:ILE:CA	2.64	0.45
1:D:184:ASP:OD1	1:D:184:ASP:N	2.46	0.45
1:A:184:ASP:OD1	1:A:185:ARG:N	2.47	0.45
1:C:21:GLN:HE21	1:C:28:GLN:HB2	1.81	0.45
1:C:53:LEU:CG	1:C:126:ALA:HB2	2.45	0.45
1:C:171:ARG:O	1:C:173:ILE:CA	2.64	0.45
1:C:570:LYS:NZ	1:C:570:LYS:CB	2.73	0.45
1:B:152:GLU:OE2	1:D:147:ARG:NH2	2.49	0.45
1:B:312:HIS:NE2	1:B:368:LYS:CD	2.76	0.45
1:B:475:PHE:N	1:B:476:PRO:CD	2.78	0.45
1:D:53:LEU:CG	1:D:126:ALA:HB2	2.45	0.45
1:A:88:ASP:O	1:A:95:LYS:HE3	2.15	0.45
1:A:312:HIS:NE2	1:A:368:LYS:CD	2.76	0.45
1:B:88:ASP:O	1:B:95:LYS:HE3	2.15	0.45
1:B:171:ARG:O	1:B:173:ILE:CA	2.64	0.45
1:B:366:HIS:HD2	1:B:382:CYS:SG	2.40	0.45
1:A:366:HIS:HD2	1:A:382:CYS:SG	2.40	0.45
1:A:489:TRP:O	1:A:489:TRP:HD1	1.99	0.45
1:B:184:ASP:OD1	1:B:185:ARG:N	2.47	0.45
1:B:331:PHE:HB3	1:B:336:VAL:CG2	2.46	0.45
1:B:335:VAL:HG12	1:B:376:TYR:CE2	2.51	0.45
1:D:348:GLU:HB3	1:D:499:PHE:HB2	1.99	0.45
1:A:74:ARG:NH1	1:A:376:TYR:CZ	2.84	0.45
1:A:331:PHE:HB3	1:A:336:VAL:CG2	2.46	0.45
1:A:335:VAL:HG12	1:A:376:TYR:CE2	2.51	0.45
1:C:74:ARG:NH1	1:C:376:TYR:CZ	2.84	0.45
1:D:366:HIS:HD2	1:D:382:CYS:SG	2.40	0.45
1:A:408:ALA:N	1:A:411:VAL:CG2	2.79	0.45
1:C:78:GLU:HG3	1:C:109:HIS:HE1	1.80	0.45
1:C:366:HIS:HD2	1:C:382:CYS:SG	2.40	0.45
1:C:408:ALA:N	1:C:411:VAL:CG2	2.79	0.45
1:B:74:ARG:NH1	1:B:376:TYR:CZ	2.84	0.45
1:B:489:TRP:O	1:B:489:TRP:HD1	1.99	0.45
1:D:74:ARG:NH1	1:D:376:TYR:CZ	2.84	0.45
1:D:78:GLU:HG3	1:D:109:HIS:HE1	1.80	0.45
1:D:152:GLU:HB2	1:D:153:TRP:CZ3	2.52	0.45
1:D:216:LYS:HA	1:D:219:THR:HG21	1.96	0.45
1:D:470:ARG:CB	1:D:489:TRP:HE1	2.02	0.45
1:D:475:PHE:N	1:D:476:PRO:CD	2.78	0.45

*Continued on next page...*

*Continued from previous page...*

Atom-1	Atom-2	Interatomic distance (Å)	Clash overlap (Å)
1:A:348:GLU:HB3	1:A:499:PHE:HB2	1.99	0.45
1:C:152:GLU:HB2	1:C:153:TRP:CZ3	2.52	0.45
1:C:348:GLU:HB3	1:C:499:PHE:HB2	1.99	0.45
1:C:350:LEU:O	1:C:355:ILE:HG22	2.17	0.45
1:C:475:PHE:N	1:C:476:PRO:CD	2.78	0.45
1:B:170:SER:OG	1:B:171:ARG:N	2.50	0.45
1:D:408:ALA:N	1:D:411:VAL:CG2	2.79	0.45
1:D:489:TRP:CD1	1:D:489:TRP:O	2.70	0.45
1:A:21:GLN:HE21	1:A:28:GLN:HB2	1.81	0.45
1:A:170:SER:OG	1:A:171:ARG:N	2.50	0.45
1:C:37:LEU:CD1	1:C:177:PHE:HE1	2.25	0.45
1:C:173:ILE:HB	1:C:176:ARG:HB2	1.99	0.45
1:C:489:TRP:CD1	1:C:489:TRP:O	2.70	0.45
1:B:21:GLN:HE21	1:B:28:GLN:HB2	1.81	0.45
1:B:408:ALA:N	1:B:411:VAL:CG2	2.80	0.45
1:D:37:LEU:CD1	1:D:177:PHE:HE1	2.25	0.45
1:D:350:LEU:O	1:D:355:ILE:HG22	2.17	0.45
1:A:412:LEU:C	1:A:414:GLU:OE1	2.55	0.45
1:A:489:TRP:CD1	1:A:489:TRP:O	2.70	0.45
1:C:216:LYS:HA	1:C:219:THR:HG21	1.96	0.45
1:B:348:GLU:HB3	1:B:499:PHE:HB2	1.99	0.45
1:D:173:ILE:HB	1:D:176:ARG:HB2	1.99	0.45
1:A:332:SER:CB	1:A:334:PRO:CD	2.81	0.45
1:A:350:LEU:O	1:A:355:ILE:HG22	2.17	0.45
1:C:361:ASN:O	1:C:364:ASN:N	2.45	0.45
1:D:542:PHE:H	1:D:542:PHE:HD2	1.65	0.45
1:C:33:LEU:CD2	1:C:177:PHE:HD1	2.24	0.44
1:C:310:LEU:CD2	1:C:311:MET:O	2.65	0.44
1:C:329:TYR:O	1:C:329:TYR:CD1	2.70	0.44
1:C:542:PHE:H	1:C:542:PHE:HD2	1.65	0.44
1:B:280:SER:C	1:B:282:LEU:H	2.19	0.44
1:B:332:SER:CB	1:B:334:PRO:CD	2.81	0.44
1:B:350:LEU:O	1:B:355:ILE:HG22	2.17	0.44
1:B:412:LEU:C	1:B:414:GLU:OE1	2.55	0.44
1:B:489:TRP:CD1	1:B:489:TRP:O	2.70	0.44
1:D:310:LEU:CD2	1:D:311:MET:O	2.65	0.44
1:D:329:TYR:CD1	1:D:329:TYR:O	2.70	0.44
1:D:537:ARG:HB3	1:D:537:ARG:HH21	1.82	0.44
1:C:537:ARG:HH21	1:C:537:ARG:HB3	1.82	0.44
1:B:34:LEU:HD23	1:B:34:LEU:HA	1.77	0.44
1:A:152:GLU:HB2	1:A:153:TRP:CZ3	2.52	0.44

*Continued on next page...*

*Continued from previous page...*

Atom-1	Atom-2	Interatomic distance (Å)	Clash overlap (Å)
1:A:152:GLU:OE2	1:C:147:ARG:NH2	2.51	0.44
1:A:370:ARG:HB2	1:A:373:THR:OG1	2.16	0.44
1:A:480:THR:CG2	1:A:527:PRO:HB3	2.48	0.44
1:C:475:PHE:CG	1:C:476:PRO:HD2	2.53	0.44
1:B:34:LEU:HG	1:B:106:VAL:HG23	2.00	0.44
1:B:103:LYS:NZ	1:B:105:CYS:HB2	2.33	0.44
1:B:370:ARG:HB2	1:B:373:THR:OG1	2.16	0.44
1:B:403:PRO:O	1:B:403:PRO:CD	2.66	0.44
1:D:34:LEU:HA	1:D:34:LEU:HD23	1.77	0.44
1:D:331:PHE:HB3	1:D:336:VAL:CG2	2.46	0.44
1:D:361:ASN:O	1:D:364:ASN:N	2.45	0.44
1:A:34:LEU:HG	1:A:106:VAL:HG23	2.00	0.44
1:A:55:LEU:HB2	1:B:23:ASP:HB3	1.98	0.44
1:A:103:LYS:NZ	1:A:105:CYS:HB2	2.33	0.44
1:A:173:ILE:HB	1:A:176:ARG:HB2	1.99	0.44
1:A:190:GLU:OE1	1:D:182:ARG:NH1	2.49	0.44
1:A:280:SER:C	1:A:282:LEU:H	2.19	0.44
1:A:329:TYR:O	1:A:329:TYR:CD1	2.70	0.44
1:A:484:LEU:C	1:A:484:LEU:CD2	2.85	0.44
1:C:72:LEU:HD12	1:C:72:LEU:HA	1.78	0.44
1:B:310:LEU:CD2	1:B:311:MET:O	2.65	0.44
1:B:329:TYR:CD1	1:B:329:TYR:O	2.70	0.44
1:B:480:THR:CG2	1:B:527:PRO:HB3	2.48	0.44
1:D:442:PHE:CZ	1:D:489:TRP:CZ3	3.02	0.44
1:D:475:PHE:CG	1:D:476:PRO:HD2	2.53	0.44
1:A:310:LEU:CD2	1:A:311:MET:O	2.65	0.44
1:A:482:VAL:O	1:A:486:LYS:HG3	2.18	0.44
1:C:331:PHE:HB3	1:C:336:VAL:CG2	2.46	0.44
1:B:152:GLU:HB2	1:B:153:TRP:CZ3	2.52	0.44
1:B:484:LEU:C	1:B:484:LEU:CD2	2.85	0.44
1:B:537:ARG:HB3	1:B:537:ARG:HH21	1.82	0.44
1:A:537:ARG:HB3	1:A:537:ARG:HH21	1.82	0.44
1:B:173:ILE:HB	1:B:176:ARG:HB2	1.99	0.44
1:D:33:LEU:CD2	1:D:177:PHE:HD1	2.24	0.44
1:A:34:LEU:HD23	1:A:34:LEU:HA	1.77	0.44
1:A:488:CYS:HA	1:A:496:ARG:HG3	2.00	0.44
1:C:280:SER:C	1:C:282:LEU:H	2.19	0.44
1:C:332:SER:H	1:C:335:VAL:CG2	2.31	0.44
1:B:39:SER:O	1:B:43:ASN:ND2	2.50	0.44
1:B:482:VAL:O	1:B:486:LYS:HG3	2.18	0.44
1:D:39:SER:O	1:D:43:ASN:ND2	2.50	0.44

*Continued on next page...*

*Continued from previous page...*

Atom-1	Atom-2	Interatomic distance (Å)	Clash overlap (Å)
1:D:488:CYS:O	1:D:496:ARG:HG3	2.17	0.44
1:A:39:SER:O	1:A:43:ASN:ND2	2.50	0.44
1:C:39:SER:O	1:C:43:ASN:ND2	2.51	0.44
1:C:69:LEU:HA	1:C:69:LEU:HD23	1.79	0.44
1:C:120:VAL:HG11	1:C:167:TYR:CE1	2.53	0.44
1:C:170:SER:OG	1:C:171:ARG:N	2.50	0.44
1:C:442:PHE:CZ	1:C:489:TRP:CZ3	3.02	0.44
1:B:53:LEU:CG	1:B:126:ALA:CB	2.96	0.44
1:D:93:TRP:O	1:D:97:ILE:HG13	2.18	0.44
1:D:332:SER:H	1:D:335:VAL:CG2	2.31	0.44
1:A:53:LEU:CG	1:A:126:ALA:CB	2.96	0.44
1:B:488:CYS:HA	1:B:496:ARG:HG3	2.00	0.44
1:D:120:VAL:HG11	1:D:167:TYR:CE1	2.53	0.44
1:C:93:TRP:O	1:C:97:ILE:HG13	2.18	0.43
1:C:479:LYS:NZ	1:C:479:LYS:CB	2.73	0.43
1:C:488:CYS:HA	1:C:496:ARG:HG3	2.00	0.43
1:B:1:MET:HG2	1:B:58:LYS:HD2	2.00	0.43
1:D:170:SER:OG	1:D:171:ARG:N	2.50	0.43
1:A:1:MET:HG2	1:A:58:LYS:HD2	2.01	0.43
1:C:415:MET:N	1:C:415:MET:CE	2.81	0.43
1:D:488:CYS:HA	1:D:496:ARG:HG3	2.00	0.43
1:A:69:LEU:HD23	1:A:69:LEU:HA	1.78	0.43
1:A:120:VAL:HG11	1:A:167:TYR:CE1	2.53	0.43
1:A:370:ARG:HG3	1:A:376:TYR:HB3	2.01	0.43
1:A:433:ASP:O	1:A:436:SER:OG	2.29	0.43
1:A:475:PHE:N	1:A:476:PRO:CD	2.78	0.43
1:C:480:THR:CG2	1:C:527:PRO:HB3	2.48	0.43
1:B:370:ARG:HG3	1:B:376:TYR:HB3	2.01	0.43
1:B:433:ASP:O	1:B:436:SER:OG	2.29	0.43
1:D:280:SER:C	1:D:282:LEU:H	2.19	0.43
1:D:480:THR:CG2	1:D:527:PRO:HB3	2.48	0.43
1:A:289:ILE:CG2	1:A:384:PHE:CZ	3.01	0.43
1:C:26:ILE:HG21	1:C:99:LEU:HB3	2.01	0.43
1:B:120:VAL:HG11	1:B:167:TYR:CE1	2.53	0.43
1:B:289:ILE:CG2	1:B:384:PHE:CZ	3.02	0.43
1:B:313:LYS:HB2	1:B:318:TYR:HE2	1.84	0.43
1:D:26:ILE:HG21	1:D:99:LEU:HB3	2.01	0.43
1:D:72:LEU:HA	1:D:72:LEU:HD12	1.79	0.43
1:D:415:MET:N	1:D:415:MET:CE	2.81	0.43
1:A:313:LYS:HB2	1:A:318:TYR:HE2	1.84	0.43
1:A:415:MET:N	1:A:415:MET:CE	2.81	0.43

*Continued on next page...*



*Continued from previous page...*

Atom-1	Atom-2	Interatomic distance (Å)	Clash overlap (Å)
1:A:506:LEU:HA	1:A:509:ILE:HD12	2.00	0.43
1:B:506:LEU:HA	1:B:509:ILE:HD12	2.00	0.43
1:D:199:ASP:CG	1:D:208:LYS:HD3	2.39	0.43
1:C:34:LEU:HG	1:C:106:VAL:HG23	2.00	0.43
1:C:199:ASP:CG	1:C:208:LYS:HD3	2.39	0.43
1:C:289:ILE:CG2	1:C:384:PHE:CZ	3.01	0.43
1:B:199:ASP:CG	1:B:208:LYS:HD3	2.39	0.43
1:B:415:MET:N	1:B:415:MET:CE	2.81	0.43
1:A:199:ASP:CG	1:A:208:LYS:HD3	2.39	0.43
1:D:34:LEU:HG	1:D:106:VAL:HG23	2.00	0.43
1:D:289:ILE:CG2	1:D:384:PHE:CZ	3.01	0.43
1:D:446:THR:HG21	1:D:473:PHE:CD2	2.32	0.43
1:A:93:TRP:O	1:A:97:ILE:HG13	2.18	0.43
1:A:147:ARG:NH2	1:C:152:GLU:OE2	2.52	0.43
1:A:357:HIS:CD2	1:A:360:LEU:HD13	2.54	0.43
1:A:446:THR:HG23	1:A:473:PHE:CD2	2.51	0.43
1:A:542:PHE:H	1:A:542:PHE:HD2	1.65	0.43
1:C:170:SER:HG	1:C:173:ILE:N	2.16	0.43
1:B:357:HIS:CD2	1:B:360:LEU:HD13	2.54	0.43
1:B:446:THR:HG23	1:B:473:PHE:CD2	2.51	0.43
1:D:170:SER:HG	1:D:173:ILE:N	2.16	0.43
1:A:84:LYS:HE2	1:A:84:LYS:HB3	1.89	0.43
1:A:153:TRP:HE1	1:A:162:ARG:CZ	2.32	0.43
1:C:482:VAL:O	1:C:486:LYS:HG3	2.18	0.43
1:A:26:ILE:HG21	1:A:99:LEU:HB3	2.01	0.43
1:A:170:SER:HG	1:A:173:ILE:N	2.17	0.43
1:B:69:LEU:HD23	1:B:69:LEU:HA	1.78	0.43
1:B:93:TRP:O	1:B:97:ILE:HG13	2.18	0.43
1:B:153:TRP:HE1	1:B:162:ARG:CZ	2.32	0.43
1:B:332:SER:C	1:B:334:PRO:N	2.69	0.43
1:B:542:PHE:HD2	1:B:542:PHE:H	1.65	0.43
1:D:153:TRP:HE1	1:D:162:ARG:CZ	2.32	0.43
1:D:506:LEU:HA	1:D:509:ILE:HD12	2.00	0.43
1:A:20:LEU:HB3	1:B:55:LEU:HD22	2.01	0.42
1:A:78:GLU:HG3	1:A:109:HIS:HE1	1.79	0.42
1:A:332:SER:C	1:A:334:PRO:N	2.69	0.42
1:C:153:TRP:HE1	1:C:162:ARG:CZ	2.32	0.42
1:C:403:PRO:O	1:C:403:PRO:CD	2.66	0.42
1:C:506:LEU:HA	1:C:509:ILE:HD12	2.00	0.42
1:C:516:ASN:HD22	1:C:516:ASN:N	2.08	0.42
1:B:26:ILE:HG21	1:B:99:LEU:HB3	2.01	0.42

*Continued on next page...*

*Continued from previous page...*

Atom-1	Atom-2	Interatomic distance (Å)	Clash overlap (Å)
1:D:-1:ALA:HB3	1:D:2:GLU:HB3	2.01	0.42
1:D:118:SER:HG	1:D:560:LEU:HD23	1.75	0.42
1:D:287:SER:O	1:D:378:HIS:NE2	2.52	0.42
1:D:482:VAL:O	1:D:486:LYS:HG3	2.18	0.42
1:A:154:ASN:O	1:A:542:PHE:HE1	2.03	0.42
1:C:-1:ALA:HB3	1:C:2:GLU:HB3	2.00	0.42
1:C:287:SER:O	1:C:378:HIS:NE2	2.53	0.42
1:B:154:ASN:O	1:B:542:PHE:HE1	2.02	0.42
1:B:541:LYS:HB3	1:B:541:LYS:HZ2	1.83	0.42
1:A:374:GLU:N	1:A:374:GLU:CD	2.73	0.42
1:C:103:LYS:NZ	1:C:105:CYS:HB2	2.33	0.42
1:C:446:THR:HG21	1:C:473:PHE:CD2	2.32	0.42
1:B:170:SER:HG	1:B:173:ILE:N	2.17	0.42
1:B:374:GLU:N	1:B:374:GLU:CD	2.73	0.42
1:D:103:LYS:NZ	1:D:105:CYS:HB2	2.33	0.42
1:A:407:TYR:HB3	1:A:411:VAL:HG23	2.01	0.42
1:C:407:TYR:HB3	1:C:411:VAL:HG23	2.01	0.42
1:B:78:GLU:HG3	1:B:109:HIS:HE1	1.80	0.42
1:D:403:PRO:O	1:D:403:PRO:CD	2.66	0.42
1:A:481:LEU:HD23	1:A:481:LEU:HA	1.89	0.42
1:A:559:GLN:O	1:A:563:TYR:HD2	2.02	0.42
1:B:332:SER:H	1:B:335:VAL:CG2	2.31	0.42
1:B:407:TYR:HB3	1:B:411:VAL:HG23	2.01	0.42
1:B:492:GLU:HB2	1:B:495:GLN:CD	2.40	0.42
1:B:559:GLN:O	1:B:563:TYR:HD2	2.02	0.42
1:D:516:ASN:HD22	1:D:516:ASN:N	2.08	0.42
1:A:122:GLU:C	1:A:124:ILE:N	2.73	0.42
1:A:332:SER:H	1:A:335:VAL:CG2	2.31	0.42
1:A:347:MET:HB3	1:A:499:PHE:CE2	2.55	0.42
1:A:414:GLU:N	1:A:414:GLU:CD	2.73	0.42
1:A:492:GLU:HB2	1:A:495:GLN:CD	2.40	0.42
1:C:118:SER:HG	1:C:560:LEU:HD23	1.75	0.42
1:C:337:ILE:HG22	1:C:481:LEU:HD21	2.02	0.42
1:C:541:LYS:HB3	1:C:541:LYS:HZ3	1.81	0.42
1:C:559:GLN:O	1:C:563:TYR:HD2	2.02	0.42
1:B:122:GLU:C	1:B:124:ILE:N	2.73	0.42
1:B:570:LYS:HB2	1:B:570:LYS:HZ3	1.82	0.42
1:D:1:MET:HG2	1:D:58:LYS:HD2	2.00	0.42
1:A:-1:ALA:HB3	1:A:2:GLU:HB3	2.01	0.42
1:A:449:VAL:CG1	1:A:450:PRO:CD	2.97	0.42
1:B:414:GLU:N	1:B:414:GLU:CD	2.73	0.42

*Continued on next page...*

*Continued from previous page...*

Atom-1	Atom-2	Interatomic distance (Å)	Clash overlap (Å)
1:B:449:VAL:CG1	1:B:450:PRO:CD	2.97	0.42
1:B:544:GLY:O	1:B:548:SER:N	2.53	0.42
1:A:408:ALA:H	1:A:411:VAL:CG2	2.33	0.42
1:A:449:VAL:HG13	1:A:450:PRO:CD	2.43	0.42
1:A:475:PHE:N	1:A:475:PHE:CD1	2.73	0.42
1:A:544:GLY:O	1:A:548:SER:N	2.53	0.42
1:C:1:MET:HG2	1:C:58:LYS:HD2	2.01	0.42
1:C:122:GLU:C	1:C:124:ILE:N	2.73	0.42
1:B:-1:ALA:HB3	1:B:2:GLU:HB3	2.01	0.42
1:B:347:MET:HB3	1:B:499:PHE:CE2	2.55	0.42
1:D:337:ILE:HG22	1:D:481:LEU:HD21	2.02	0.42
1:D:407:TYR:HB3	1:D:411:VAL:HG23	2.01	0.42
1:D:411:VAL:HG11	1:D:427:LYS:CB	2.38	0.42
1:D:559:GLN:O	1:D:563:TYR:HD2	2.02	0.42
1:A:475:PHE:CG	1:A:476:PRO:HD2	2.53	0.42
1:C:53:LEU:CG	1:C:126:ALA:CB	2.96	0.42
1:C:370:ARG:HG3	1:C:376:TYR:HB3	2.01	0.42
1:B:408:ALA:H	1:B:411:VAL:CG2	2.33	0.42
1:B:444:LEU:HD23	1:B:444:LEU:HA	1.87	0.42
1:D:449:VAL:CG1	1:D:450:PRO:CD	2.97	0.42
1:D:563:TYR:O	1:D:567:GLU:HB3	2.20	0.42
1:A:72:LEU:HD12	1:A:72:LEU:HA	1.79	0.42
1:C:332:SER:C	1:C:334:PRO:N	2.69	0.42
1:C:357:HIS:CD2	1:C:360:LEU:HD13	2.54	0.42
1:C:563:TYR:O	1:C:567:GLU:HB3	2.20	0.42
1:B:337:ILE:HG22	1:B:481:LEU:HD21	2.02	0.42
1:B:449:VAL:HG13	1:B:450:PRO:CD	2.43	0.42
1:B:475:PHE:CG	1:B:476:PRO:HD2	2.53	0.42
1:D:53:LEU:CG	1:D:126:ALA:CB	2.96	0.42
1:D:212:ASP:HA	1:D:215:LEU:CD2	2.50	0.42
1:D:370:ARG:HG3	1:D:376:TYR:HB3	2.01	0.42
1:A:337:ILE:HG22	1:A:481:LEU:HD21	2.02	0.41
1:A:563:TYR:O	1:A:567:GLU:HB3	2.20	0.41
1:C:212:ASP:HA	1:C:215:LEU:CD2	2.50	0.41
1:C:347:MET:HB3	1:C:499:PHE:CE2	2.55	0.41
1:C:449:VAL:CG1	1:C:450:PRO:CD	2.97	0.41
1:D:332:SER:C	1:D:334:PRO:N	2.69	0.41
1:D:357:HIS:CD2	1:D:360:LEU:HD13	2.54	0.41
1:D:544:GLY:O	1:D:548:SER:N	2.53	0.41
1:A:343:ILE:O	1:A:347:MET:HG2	2.20	0.41
1:A:444:LEU:HD23	1:A:444:LEU:HA	1.87	0.41

*Continued on next page...*

*Continued from previous page...*

Atom-1	Atom-2	Interatomic distance (Å)	Clash overlap (Å)
1:B:99:LEU:HD23	1:B:99:LEU:HA	1.79	0.41
1:B:343:ILE:O	1:B:347:MET:HG2	2.20	0.41
1:D:310:LEU:CD2	1:D:311:MET:N	2.53	0.41
1:D:347:MET:HB3	1:D:499:PHE:CE2	2.55	0.41
1:A:287:SER:O	1:A:378:HIS:NE2	2.52	0.41
1:C:99:LEU:HA	1:C:99:LEU:HD23	1.79	0.41
1:C:544:GLY:O	1:C:548:SER:N	2.53	0.41
1:B:212:ASP:HA	1:B:215:LEU:CD2	2.50	0.41
1:B:481:LEU:HD23	1:B:481:LEU:HA	1.89	0.41
1:B:563:TYR:O	1:B:567:GLU:HB3	2.20	0.41
1:A:212:ASP:HA	1:A:215:LEU:CD2	2.50	0.41
1:C:313:LYS:HB2	1:C:318:TYR:HE2	1.84	0.41
1:C:414:GLU:N	1:C:414:GLU:CD	2.73	0.41
1:B:57:GLU:H	1:B:57:GLU:CD	2.24	0.41
1:B:127:ALA:CB	1:B:141:ARG:HD2	2.48	0.41
1:B:287:SER:O	1:B:378:HIS:NE2	2.52	0.41
1:B:442:PHE:CZ	1:B:489:TRP:CZ3	3.02	0.41
1:B:475:PHE:N	1:B:475:PHE:CD1	2.73	0.41
1:B:505:ILE:CG1	1:B:531:CYS:HB3	2.51	0.41
1:A:57:GLU:H	1:A:57:GLU:CD	2.24	0.41
1:A:108:PHE:O	1:A:111:HIS:HB3	2.21	0.41
1:A:127:ALA:CB	1:A:141:ARG:HD2	2.48	0.41
1:A:185:ARG:NE	1:A:218:LEU:HD23	2.36	0.41
1:A:215:LEU:C	1:A:215:LEU:HD12	2.41	0.41
1:A:505:ILE:CG1	1:A:531:CYS:HB3	2.51	0.41
1:C:319:MET:CA	1:C:322:ASN:CG	2.88	0.41
1:C:374:GLU:N	1:C:374:GLU:CD	2.73	0.41
1:C:492:GLU:HB2	1:C:495:GLN:CD	2.40	0.41
1:B:108:PHE:O	1:B:111:HIS:HB3	2.21	0.41
1:B:185:ARG:NE	1:B:218:LEU:HD23	2.36	0.41
1:D:374:GLU:N	1:D:374:GLU:CD	2.73	0.41
1:A:5:ARG:NH2	1:B:13:SER:OG	2.44	0.41
1:C:108:PHE:O	1:C:111:HIS:HB3	2.21	0.41
1:C:408:ALA:H	1:C:411:VAL:CG2	2.33	0.41
1:C:411:VAL:HG11	1:C:427:LYS:CB	2.38	0.41
1:C:484:LEU:C	1:C:484:LEU:CD2	2.85	0.41
1:B:215:LEU:C	1:B:215:LEU:HD12	2.41	0.41
1:D:319:MET:CA	1:D:322:ASN:CG	2.88	0.41
1:D:408:ALA:H	1:D:411:VAL:CG2	2.33	0.41
1:D:484:LEU:C	1:D:484:LEU:CD2	2.85	0.41
1:D:492:GLU:HB2	1:D:495:GLN:CD	2.40	0.41

*Continued on next page...*

*Continued from previous page...*

Atom-1	Atom-2	Interatomic distance (Å)	Clash overlap (Å)
1:A:99:LEU:HD23	1:A:99:LEU:HA	1.79	0.41
1:A:100:HIS:HA	1:A:103:LYS:HB2	2.03	0.41
1:C:127:ALA:CB	1:C:141:ARG:HD2	2.48	0.41
1:C:153:TRP:HA	1:C:158:MET:SD	2.61	0.41
1:C:310:LEU:CD2	1:C:311:MET:N	2.53	0.41
1:C:505:ILE:CG1	1:C:531:CYS:HB3	2.51	0.41
1:B:72:LEU:HD12	1:B:72:LEU:HA	1.79	0.41
1:B:100:HIS:HA	1:B:103:LYS:HB2	2.03	0.41
1:B:407:TYR:O	1:B:435:TYR:CD2	2.72	0.41
1:D:53:LEU:HD21	1:D:126:ALA:HB2	1.93	0.41
1:D:108:PHE:O	1:D:111:HIS:HB3	2.21	0.41
1:D:127:ALA:CB	1:D:141:ARG:HD2	2.48	0.41
1:D:153:TRP:HA	1:D:158:MET:SD	2.61	0.41
1:D:215:LEU:C	1:D:215:LEU:HD12	2.41	0.41
1:D:313:LYS:HB2	1:D:318:TYR:HE2	1.84	0.41
1:D:505:ILE:CG1	1:D:531:CYS:HB3	2.51	0.41
1:A:407:TYR:O	1:A:435:TYR:CD2	2.72	0.41
1:A:442:PHE:CZ	1:A:489:TRP:CZ3	3.02	0.41
1:C:117:PHE:CE2	1:C:168:LEU:HD11	2.56	0.41
1:C:215:LEU:C	1:C:215:LEU:HD12	2.41	0.41
1:C:343:ILE:O	1:C:347:MET:HG2	2.20	0.41
1:B:470:ARG:HD3	1:B:489:TRP:NE1	2.27	0.41
1:A:153:TRP:HA	1:A:158:MET:SD	2.61	0.41
1:A:403:PRO:O	1:A:403:PRO:CD	2.66	0.41
1:A:470:ARG:HD3	1:A:489:TRP:NE1	2.27	0.41
1:A:488:CYS:O	1:A:496:ARG:HG3	2.16	0.41
1:C:475:PHE:N	1:C:475:PHE:CD1	2.73	0.41
1:C:475:PHE:H	1:C:475:PHE:HD1	1.59	0.41
1:B:121:VAL:HG11	1:B:564:ARG:NH1	2.11	0.41
1:B:488:CYS:O	1:B:496:ARG:HG3	2.17	0.41
1:D:117:PHE:CE2	1:D:168:LEU:HD11	2.56	0.41
1:A:310:LEU:C	1:A:310:LEU:CD1	2.85	0.41
1:D:99:LEU:HA	1:D:99:LEU:HD23	1.79	0.41
1:D:343:ILE:O	1:D:347:MET:HG2	2.20	0.41
1:A:536:ALA:O	1:A:540:ARG:CB	2.69	0.40
1:C:154:ASN:O	1:C:542:PHE:HE1	2.03	0.40
1:B:74:ARG:CZ	1:B:376:TYR:CZ	3.04	0.40
1:B:153:TRP:HA	1:B:158:MET:SD	2.61	0.40
1:D:154:ASN:O	1:D:542:PHE:HE1	2.02	0.40
1:D:185:ARG:NE	1:D:218:LEU:HD23	2.36	0.40
1:D:414:GLU:N	1:D:414:GLU:CD	2.73	0.40

*Continued on next page...*

*Continued from previous page...*

Atom-1	Atom-2	Interatomic distance (Å)	Clash overlap (Å)
1:A:74:ARG:CZ	1:A:376:TYR:CZ	3.05	0.40
1:A:332:SER:C	1:A:334:PRO:HD2	2.42	0.40
1:A:408:ALA:CA	1:A:435:TYR:HD2	2.28	0.40
1:C:53:LEU:HD21	1:C:126:ALA:HB2	1.93	0.40
1:C:185:ARG:NE	1:C:218:LEU:HD23	2.36	0.40
1:B:67:GLN:N	1:B:68:PRO:HD2	2.36	0.40
1:B:310:LEU:C	1:B:310:LEU:CD1	2.85	0.40
1:B:332:SER:C	1:B:334:PRO:HD2	2.42	0.40
1:B:536:ALA:O	1:B:540:ARG:CB	2.69	0.40
1:A:67:GLN:N	1:A:68:PRO:HD2	2.36	0.40
1:A:117:PHE:CE2	1:A:168:LEU:HD11	2.56	0.40
1:A:556:ILE:HG13	1:A:556:ILE:H	1.69	0.40
1:B:117:PHE:CE2	1:B:168:LEU:HD11	2.56	0.40
1:D:100:HIS:HA	1:D:103:LYS:HB2	2.03	0.40
1:D:475:PHE:N	1:D:475:PHE:CD1	2.73	0.40
1:A:124:ILE:HG23	1:A:145:PHE:CZ	2.57	0.40
1:A:319:MET:CA	1:A:322:ASN:CG	2.88	0.40
1:C:100:HIS:HA	1:C:103:LYS:HB2	2.03	0.40
1:C:290:LEU:CG	1:C:382:CYS:SG	3.10	0.40
1:B:124:ILE:HG23	1:B:145:PHE:CZ	2.57	0.40
1:B:556:ILE:HG13	1:B:556:ILE:H	1.69	0.40
1:D:196:ARG:HD2	1:D:212:ASP:OD1	2.22	0.40
1:D:290:LEU:CG	1:D:382:CYS:SG	3.10	0.40
1:A:148:LYS:O	1:A:148:LYS:HG2	2.22	0.40
1:A:196:ARG:HD2	1:A:212:ASP:OD1	2.22	0.40
1:A:500:SER:HA	1:A:503:CYS:SG	2.62	0.40
1:C:196:ARG:HD2	1:C:212:ASP:OD1	2.22	0.40
1:B:7:ILE:H	1:B:7:ILE:HG12	1.70	0.40
1:B:319:MET:CA	1:B:322:ASN:CG	2.88	0.40
1:D:122:GLU:C	1:D:124:ILE:N	2.73	0.40
1:D:475:PHE:H	1:D:475:PHE:HD1	1.59	0.40

There are no symmetry-related clashes.

## 5.3 Torsion angles [i](#)

### 5.3.1 Protein backbone [i](#)

In the following table, the Percentiles column shows the percent Ramachandran outliers of the chain as a percentile score with respect to all PDB entries followed by that with respect to all EM entries.

The Analysed column shows the number of residues for which the backbone conformation was analysed, and the total number of residues.

Mol	Chain	Analysed	Favoured	Allowed	Outliers	Percentiles	
1	A	440/572 (77%)	390 (89%)	48 (11%)	2 (0%)	29	67
1	B	440/572 (77%)	390 (89%)	48 (11%)	2 (0%)	29	67
1	C	440/572 (77%)	390 (89%)	48 (11%)	2 (0%)	29	67
1	D	440/572 (77%)	390 (89%)	48 (11%)	2 (0%)	29	67
All	All	1760/2288 (77%)	1560 (89%)	192 (11%)	8 (0%)	32	67

All (8) Ramachandran outliers are listed below:

Mol	Chain	Res	Type
1	A	281	LEU
1	A	386	LEU
1	C	281	LEU
1	C	386	LEU
1	B	281	LEU
1	B	386	LEU
1	D	281	LEU
1	D	386	LEU

### 5.3.2 Protein sidechains ⓘ

In the following table, the Percentiles column shows the percent sidechain outliers of the chain as a percentile score with respect to all PDB entries followed by that with respect to all EM entries.

The Analysed column shows the number of residues for which the sidechain conformation was analysed, and the total number of residues.

Mol	Chain	Analysed	Rotameric	Outliers	Percentiles	
1	A	393/518 (76%)	381 (97%)	12 (3%)	40	63
1	B	393/518 (76%)	381 (97%)	12 (3%)	40	63
1	C	393/518 (76%)	381 (97%)	12 (3%)	40	63
1	D	393/518 (76%)	381 (97%)	12 (3%)	40	63
All	All	1572/2072 (76%)	1524 (97%)	48 (3%)	43	63

All (48) residues with a non-rotameric sidechain are listed below:



Mol	Chain	Res	Type
1	A	310	LEU
1	A	311	MET
1	A	345	ARG
1	A	374	GLU
1	A	415	MET
1	A	430	HIS
1	A	475	PHE
1	A	479	LYS
1	A	487	ARG
1	A	496	ARG
1	A	537	ARG
1	A	567	GLU
1	C	310	LEU
1	C	311	MET
1	C	345	ARG
1	C	374	GLU
1	C	415	MET
1	C	430	HIS
1	C	475	PHE
1	C	479	LYS
1	C	487	ARG
1	C	496	ARG
1	C	537	ARG
1	C	567	GLU
1	B	310	LEU
1	B	311	MET
1	B	345	ARG
1	B	374	GLU
1	B	415	MET
1	B	430	HIS
1	B	475	PHE
1	B	479	LYS
1	B	487	ARG
1	B	496	ARG
1	B	537	ARG
1	B	567	GLU
1	D	310	LEU
1	D	311	MET
1	D	345	ARG
1	D	374	GLU
1	D	415	MET
1	D	430	HIS
1	D	475	PHE

*Continued on next page...*

*Continued from previous page...*

Mol	Chain	Res	Type
1	D	479	LYS
1	D	487	ARG
1	D	496	ARG
1	D	537	ARG
1	D	567	GLU

Sometimes sidechains can be flipped to improve hydrogen bonding and reduce clashes. All (47) such sidechains are listed below:

Mol	Chain	Res	Type
1	A	21	GLN
1	A	27	ASN
1	A	43	ASN
1	A	51	GLN
1	A	109	HIS
1	A	111	HIS
1	A	312	HIS
1	A	353	ASN
1	A	366	HIS
1	A	495	GLN
1	A	516	ASN
1	A	559	GLN
1	C	21	GLN
1	C	27	ASN
1	C	43	ASN
1	C	51	GLN
1	C	109	HIS
1	C	111	HIS
1	C	312	HIS
1	C	353	ASN
1	C	366	HIS
1	C	495	GLN
1	C	516	ASN
1	C	559	GLN
1	B	21	GLN
1	B	27	ASN
1	B	43	ASN
1	B	51	GLN
1	B	109	HIS
1	B	111	HIS
1	B	312	HIS
1	B	353	ASN
1	B	366	HIS

*Continued on next page...*

*Continued from previous page...*

Mol	Chain	Res	Type
1	B	495	GLN
1	B	516	ASN
1	B	559	GLN
1	D	21	GLN
1	D	27	ASN
1	D	43	ASN
1	D	109	HIS
1	D	111	HIS
1	D	312	HIS
1	D	353	ASN
1	D	366	HIS
1	D	495	GLN
1	D	516	ASN
1	D	559	GLN

### 5.3.3 RNA [i](#)

There are no RNA molecules in this entry.

## 5.4 Non-standard residues in protein, DNA, RNA chains [i](#)

There are no non-standard protein/DNA/RNA residues in this entry.

## 5.5 Carbohydrates [i](#)

There are no monosaccharides in this entry.

## 5.6 Ligand geometry [i](#)

There are no ligands in this entry.

## 5.7 Other polymers [i](#)

There are no such residues in this entry.

## 5.8 Polymer linkage issues [i](#)

There are no chain breaks in this entry.

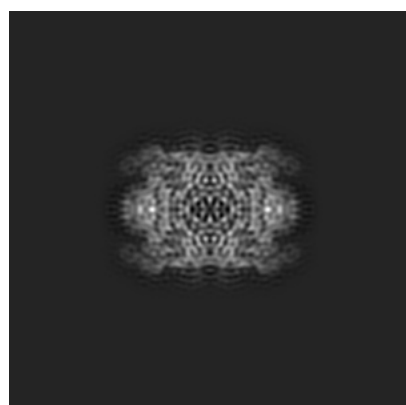
## 6 Map visualisation [i](#)

This section contains visualisations of the EMDB entry EMD-0868. These allow visual inspection of the internal detail of the map and identification of artifacts.

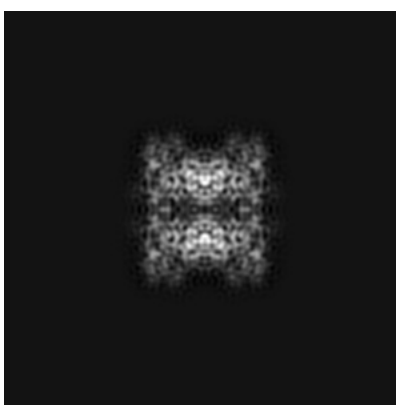
No raw map or half-maps were deposited for this entry and therefore no images, graphs, etc. pertaining to the raw map can be shown.

### 6.1 Orthogonal projections [i](#)

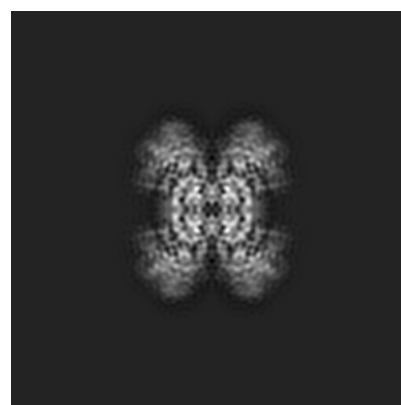
#### 6.1.1 Primary map



X



Y



Z

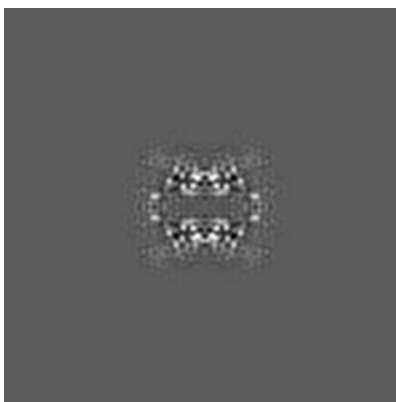
The images above show the map projected in three orthogonal directions.

### 6.2 Central slices [i](#)

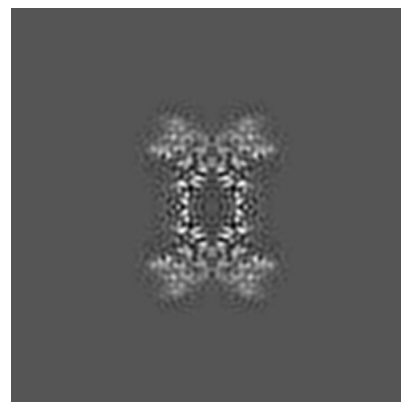
#### 6.2.1 Primary map



X Index: 100



Y Index: 100

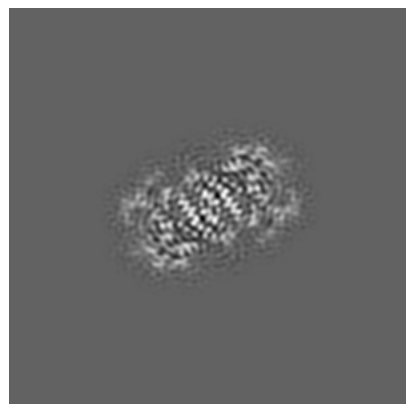


Z Index: 100

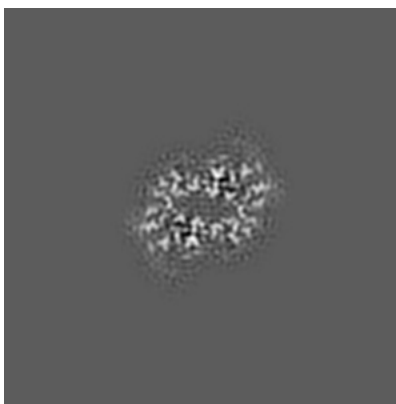
The images above show central slices of the map in three orthogonal directions.

## 6.3 Largest variance slices [i](#)

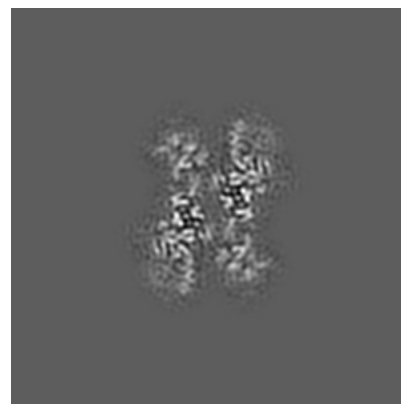
### 6.3.1 Primary map



X Index: 84



Y Index: 93



Z Index: 92

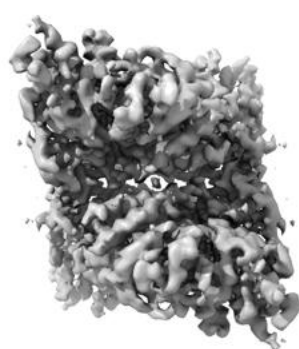
The images above show the largest variance slices of the map in three orthogonal directions.

## 6.4 Orthogonal surface views [i](#)

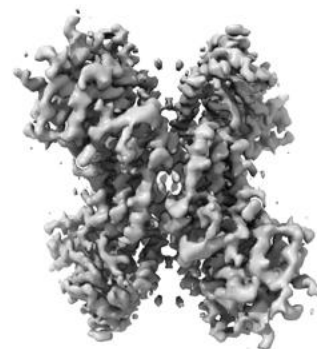
### 6.4.1 Primary map



X



Y



Z

The images above show the 3D surface view of the map at the recommended contour level 0.026. These images, in conjunction with the slice images, may facilitate assessment of whether an appropriate contour level has been provided.

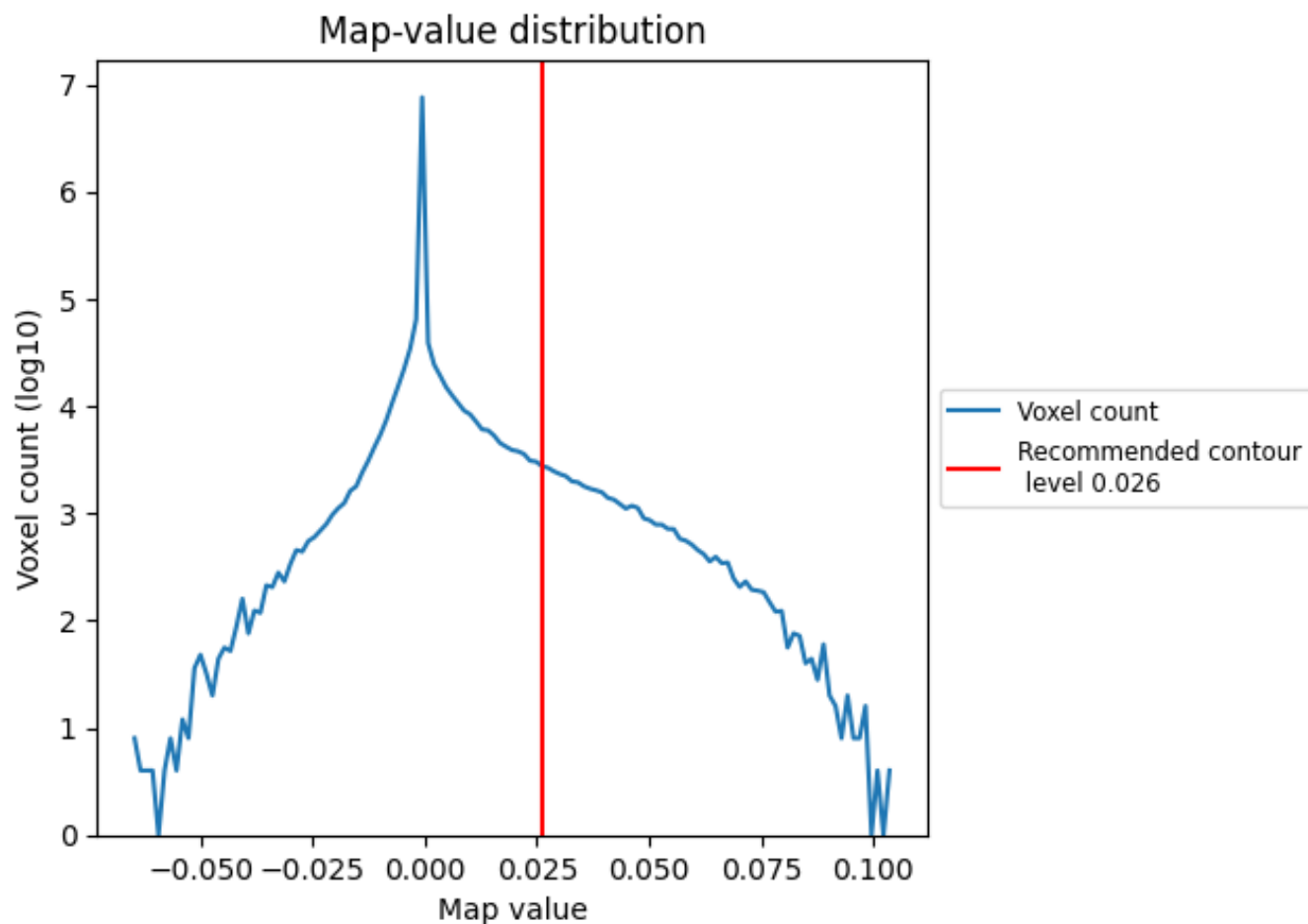
## 6.5 Mask visualisation

This section was not generated. No masks/segmentation were deposited.

## 7 Map analysis [i](#)

This section contains the results of statistical analysis of the map.

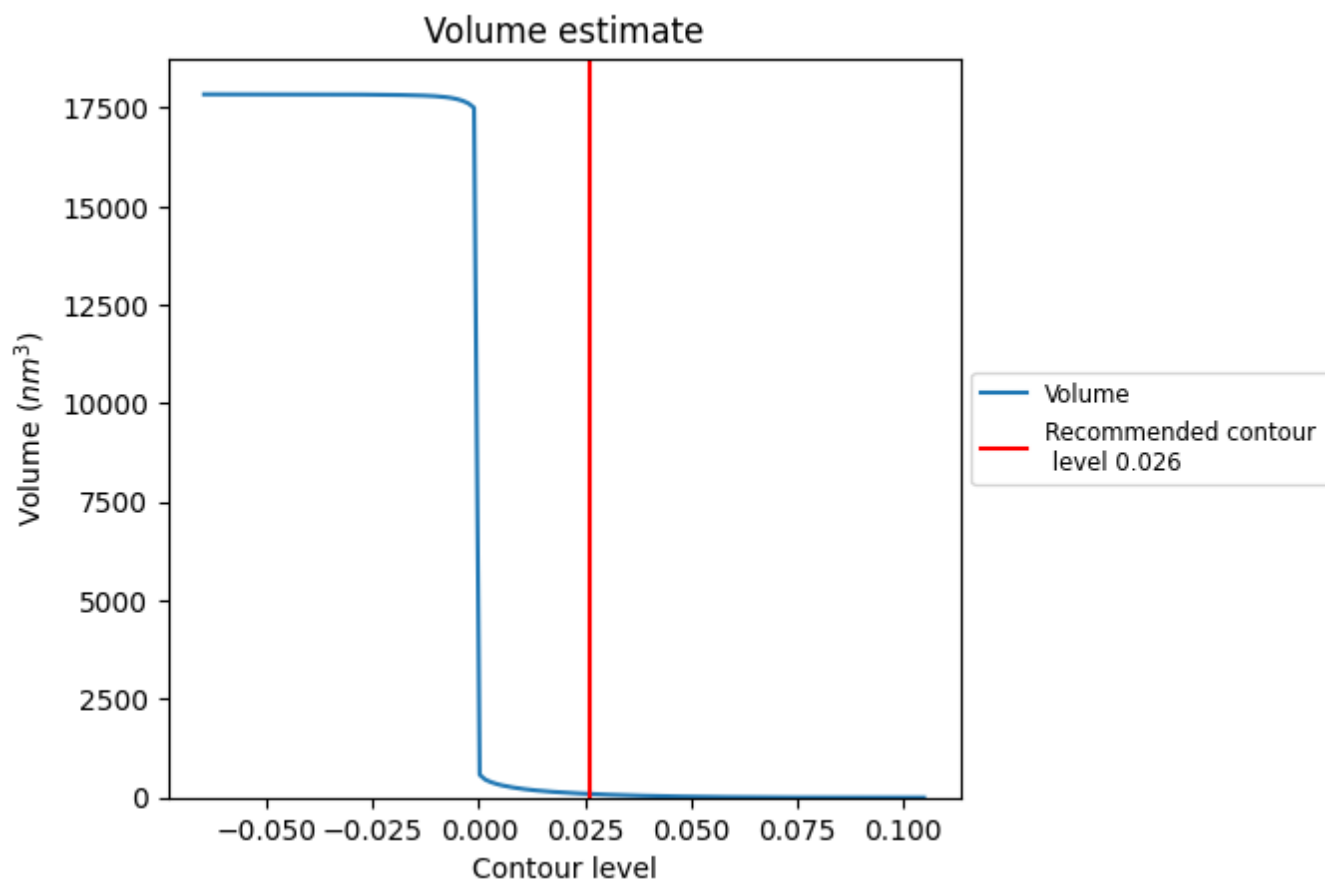
### 7.1 Map-value distribution [i](#)



The map-value distribution is plotted in 128 intervals along the x-axis. The y-axis is logarithmic. A spike in this graph at zero usually indicates that the volume has been masked.



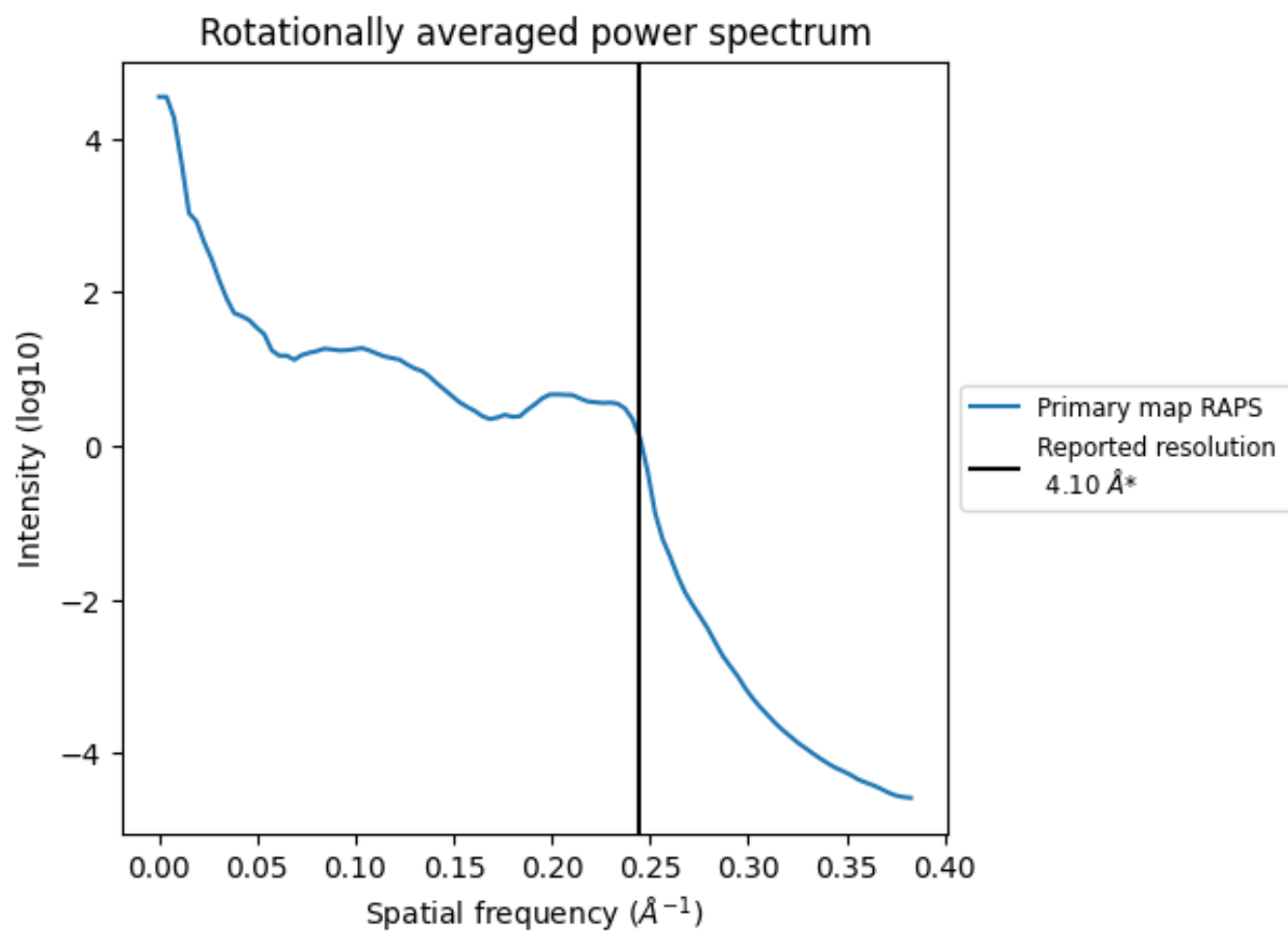
## 7.2 Volume estimate [i](#)



The volume at the recommended contour level is 93 nm<sup>3</sup>; this corresponds to an approximate mass of 84 kDa.

The volume estimate graph shows how the enclosed volume varies with the contour level. The recommended contour level is shown as a vertical line and the intersection between the line and the curve gives the volume of the enclosed surface at the given level.

### 7.3 Rotationally averaged power spectrum ⓘ



\*Reported resolution corresponds to spatial frequency of 0.244 Å<sup>-1</sup>

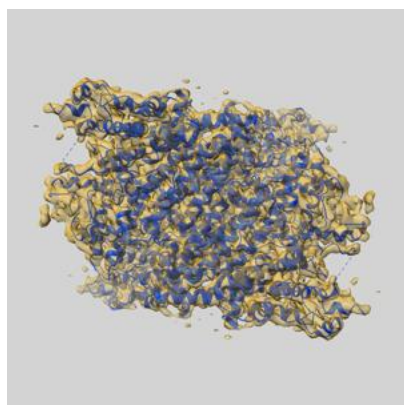
## 8 Fourier-Shell correlation

This section was not generated. No FSC curve or half-maps provided.

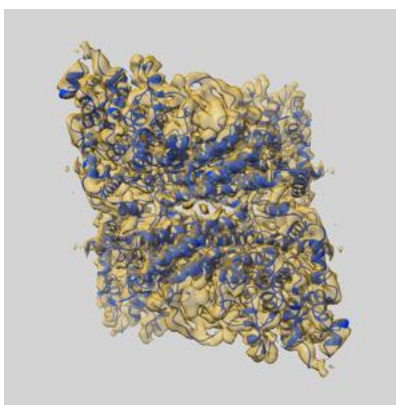
## 9 Map-model fit [i](#)

This section contains information regarding the fit between EMDB map EMD-0868 and PDB model 6LBA. Per-residue inclusion information can be found in [section 3](#) on [page 4](#).

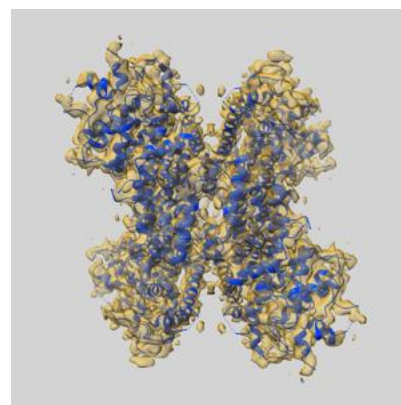
### 9.1 Map-model overlay [i](#)



X



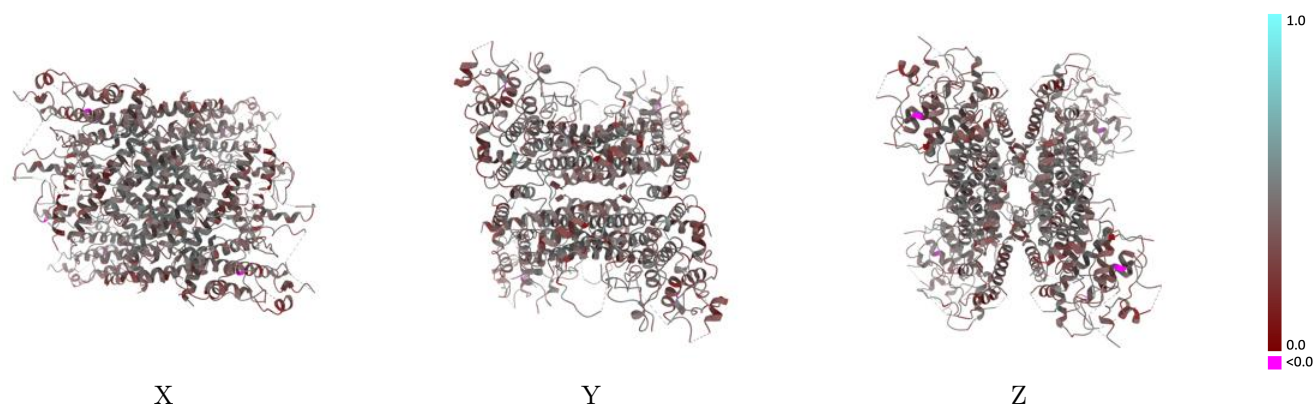
Y



Z

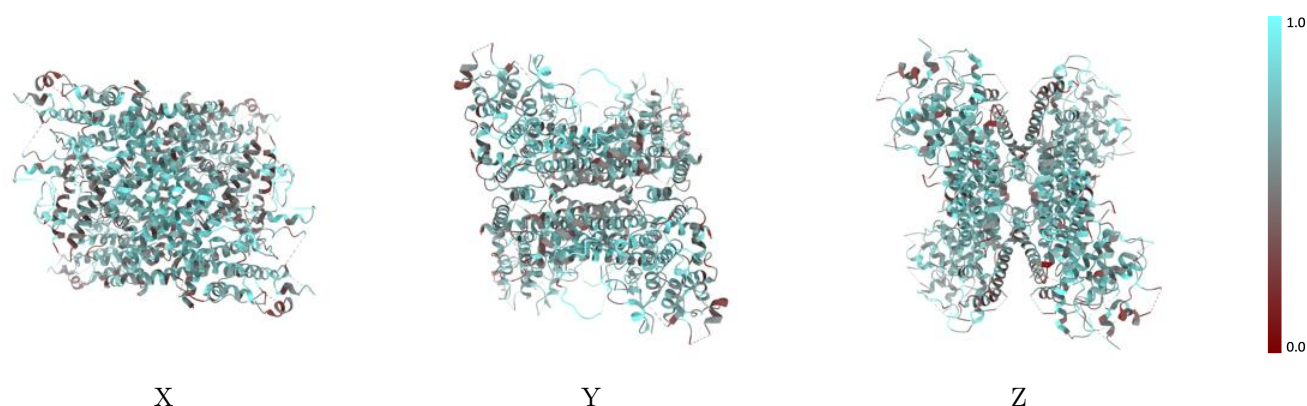
The images above show the 3D surface view of the map at the recommended contour level 0.026 at 50% transparency in yellow overlaid with a ribbon representation of the model coloured in blue. These images allow for the visual assessment of the quality of fit between the atomic model and the map.

## 9.2 Q-score mapped to coordinate model [i](#)



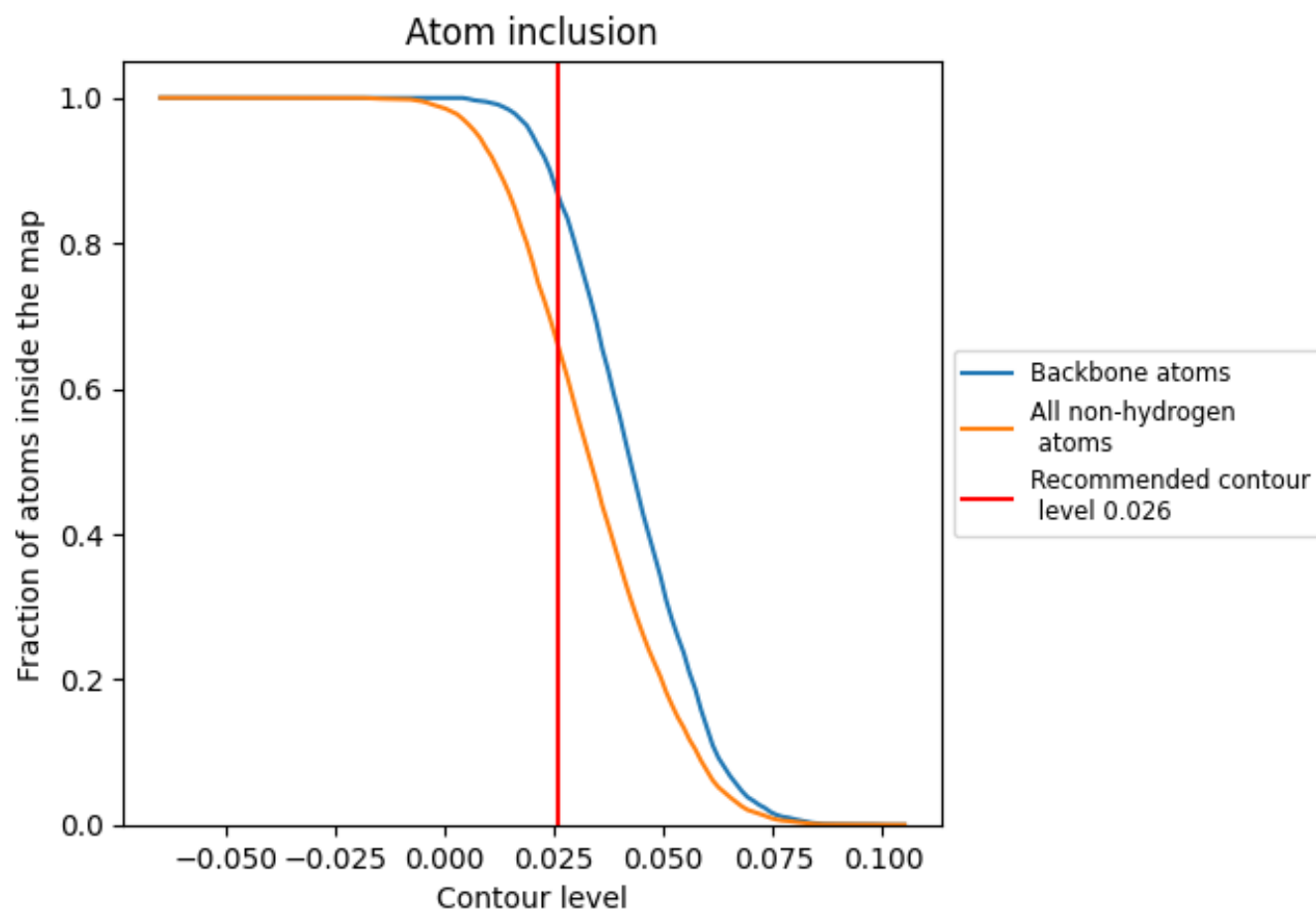
The images above show the model with each residue coloured according to its Q-score. This shows their resolvability in the map with higher Q-score values reflecting better resolvability. Please note: Q-score is calculating the resolvability of atoms, and thus high values are only expected at resolutions at which atoms can be resolved. Low Q-score values may therefore be expected for many entries.

## 9.3 Atom inclusion mapped to coordinate model [i](#)



The images above show the model with each residue coloured according to its atom inclusion. This shows to what extent they are inside the map at the recommended contour level (0.026).

## 9.4 Atom inclusion [i](#)



At the recommended contour level, 86% of all backbone atoms, 66% of all non-hydrogen atoms, are inside the map.

9.5 Map-model fit summary ⓘ

The table lists the average atom inclusion at the recommended contour level (0.026) and Q-score for the entire model and for each chain.

Chain	Atom inclusion	Q-score
All	<div></div> 0.6572	<div></div> 0.3920
A	<div></div> 0.6570	<div></div> 0.3930
B	<div></div> 0.6549	<div></div> 0.3930
C	<div></div> 0.6584	<div></div> 0.3930
D	<div></div> 0.6587	<div></div> 0.3920

