



# Full wwPDB X-ray Structure Validation Report ⓘ

Sep 26, 2022 – 12:26 PM JST

PDB ID : 6LBV  
Title : Crystal structure of barley exohydrolaseI W434F mutant in complex with methyl 6-thio-beta-gentiobioside  
Authors : Luang, S.; Streltsov, V.A.; Hrmova, M.  
Deposited on : 2019-11-15  
Resolution : 1.89 Å(reported)

This is a Full wwPDB X-ray Structure Validation Report for a publicly released PDB entry.

We welcome your comments at [validation@mail.wwpdb.org](mailto:validation@mail.wwpdb.org)

A user guide is available at

<https://www.wwpdb.org/validation/2017/XrayValidationReportHelp>

with specific help available everywhere you see the ⓘ symbol.

The types of validation reports are described at

<http://www.wwpdb.org/validation/2017/FAQs#types>.

---

The following versions of software and data (see [references ⓘ](#)) were used in the production of this report:

MolProbity	:	4.02b-467
Mogul	:	1.8.5 (274361), CSD as541be (2020)
Xtriage (Phenix)	:	1.13
EDS	:	2.31.2
buster-report	:	1.1.7 (2018)
Percentile statistics	:	20191225.v01 (using entries in the PDB archive December 25th 2019)
Refmac	:	5.8.0158
CCP4	:	7.0.044 (Gargrove)
Ideal geometry (proteins)	:	Engh & Huber (2001)
Ideal geometry (DNA, RNA)	:	Parkinson et al. (1996)
Validation Pipeline (wwPDB-VP)	:	2.31.2

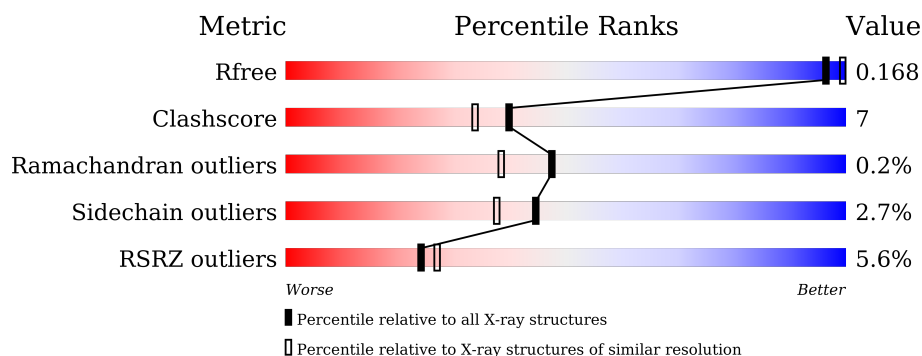
# 1 Overall quality at a glance

The following experimental techniques were used to determine the structure:

*X-RAY DIFFRACTION*

The reported resolution of this entry is 1.89 Å.

Percentile scores (ranging between 0-100) for global validation metrics of the entry are shown in the following graphic. The table shows the number of entries on which the scores are based.



Metric	Whole archive (#Entries)	Similar resolution (#Entries, resolution range(Å))
$R_{free}$	130704	6207 (1.90-1.90)
Clashscore	141614	6847 (1.90-1.90)
Ramachandran outliers	138981	6760 (1.90-1.90)
Sidechain outliers	138945	6760 (1.90-1.90)
RSRZ outliers	127900	6082 (1.90-1.90)

The table below summarises the geometric issues observed across the polymeric chains and their fit to the electron density. The red, orange, yellow and green segments of the lower bar indicate the fraction of residues that contain outliers for  $\geq 3$ , 2, 1 and 0 types of geometric quality criteria respectively. A grey segment represents the fraction of residues that are not modelled. The numeric value for each fraction is indicated below the corresponding segment, with a dot representing fractions  $\leq 5\%$ . The upper red bar (where present) indicates the fraction of residues that have poor fit to the electron density. The numeric value is given above the bar.

Mol	Chain	Length	Quality of chain
1	A	609	<div> <div>6%</div> <div> <div></div> <div>85%</div> <div>12%</div> <div>..</div> </div> </div>
2	B	2	<div> <div>100%</div> </div>

## 2 Entry composition

There are 7 unique types of molecules in this entry. The entry contains 5295 atoms, of which 0 are hydrogens and 0 are deuteriums.

In the tables below, the ZeroOcc column contains the number of atoms modelled with zero occupancy, the AltConf column contains the number of residues with at least one atom in alternate conformation and the Trace column contains the number of residues modelled with at most 2 atoms.

- Molecule 1 is a protein called Beta-D-glucan exohydrolase isoenzyme ExoI.

Mol	Chain	Residues	Atoms					ZeroOcc	AltConf	Trace
1	A	603	Total	C	N	O	S	0	15	0
			4596	2908	794	867	27			

There are 5 discrepancies between the modelled and reference sequences:

Chain	Residue	Modelled	Actual	Comment	Reference
A	-3	HIS	-	expression tag	UNP Q9XEI3
A	-2	HIS	-	expression tag	UNP Q9XEI3
A	-1	ALA	-	expression tag	UNP Q9XEI3
A	320	LYS	ASN	See sequence details	UNP Q9XEI3
A	434	PHE	TRP	engineered mutation	UNP Q9XEI3

- Molecule 2 is an oligosaccharide called beta-D-glucopyranose-(1-6)-methyl 6-thio-beta-D-glucopyranoside.

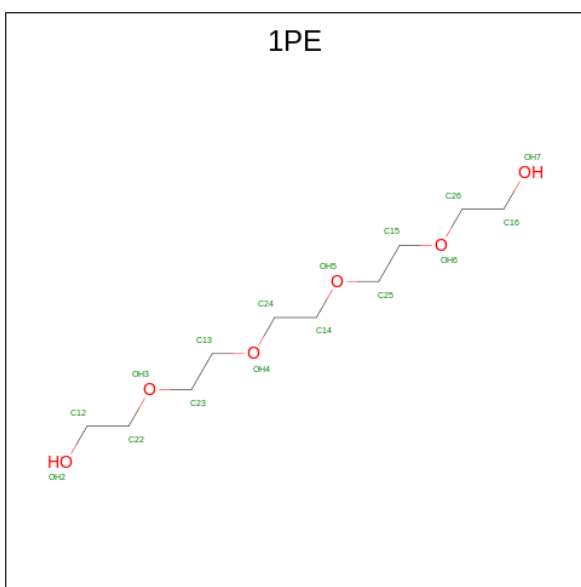
Mol	Chain	Residues	Atoms				ZeroOcc	AltConf	Trace
2	B	2	Total	C	O	S	0	1	0
			25	14	10	1			

- Molecule 3 is GLYCEROL (three-letter code: GOL) (formula: C<sub>3</sub>H<sub>8</sub>O<sub>3</sub>).



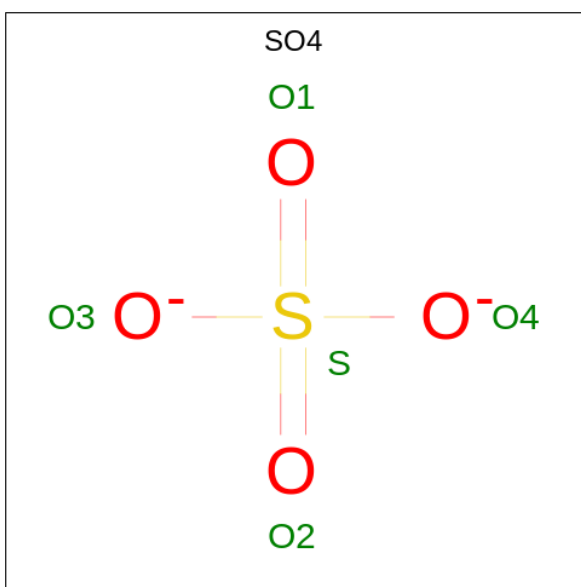
Mol	Chain	Residues	Atoms			ZeroOcc	AltConf
3	A	1	Total	C	O	0	0
			6	3	3		
3	A	1	Total	C	O	0	0
			6	3	3		
3	A	1	Total	C	O	0	0
			6	3	3		
3	A	1	Total	C	O	0	0
			6	3	3		
3	A	1	Total	C	O	0	0
			6	3	3		

- Molecule 4 is PENTAETHYLENE GLYCOL (three-letter code: 1PE) (formula: C<sub>10</sub>H<sub>22</sub>O<sub>6</sub>) (labeled as "Ligand of Interest" by depositor).



Mol	Chain	Residues	Atoms			ZeroOcc	AltConf
4	A	1	Total	C	O	0	1
			5	3	2		
4	A	1	Total	C	O	0	1
			6	4	2		
4	A	1	Total	C	O	0	0
			7	4	3		

- Molecule 5 is SULFATE ION (three-letter code: SO4) (formula: O<sub>4</sub>S).



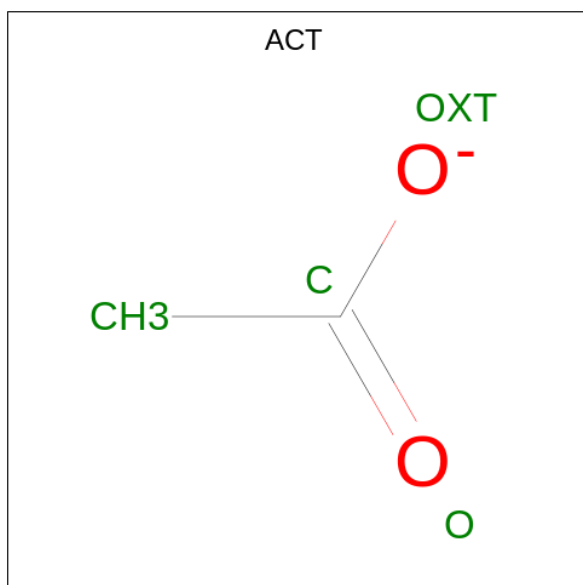
Mol	Chain	Residues	Atoms			ZeroOcc	AltConf
5	A	1	Total	O	S	0	0
			5	4	1		

*Continued on next page...*

Continued from previous page...

Mol	Chain	Residues	Atoms			ZeroOcc	AltConf
5	A	1	Total	O	S	0	0
			5	4	1		
5	A	1	Total	O	S	0	0
			5	4	1		

- Molecule 6 is ACETATE ION (three-letter code: ACT) (formula:  $C_2H_3O_2$ ).



Mol	Chain	Residues	Atoms			ZeroOcc	AltConf
6	A	1	Total	C	O	0	0
			4	2	2		

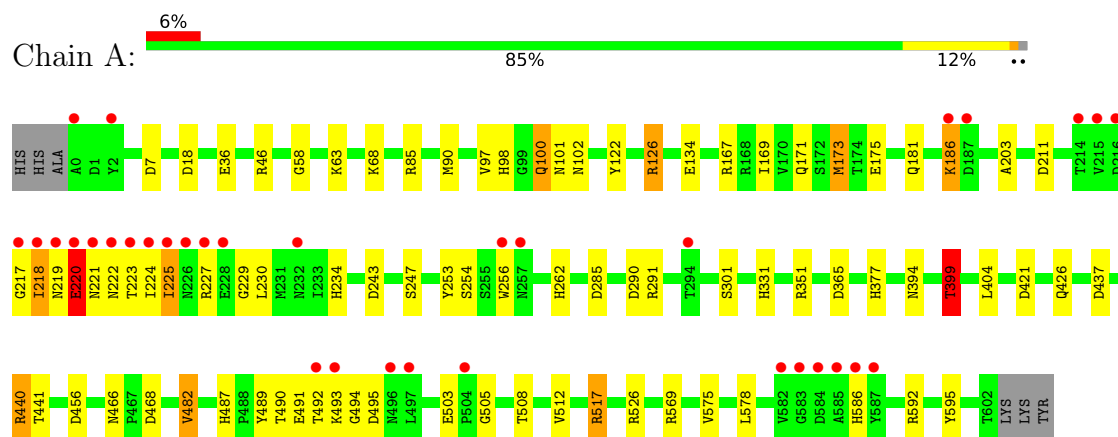
- Molecule 7 is water.

Mol	Chain	Residues	Atoms		ZeroOcc	AltConf
7	A	601	Total	O	0	0
			601	601		

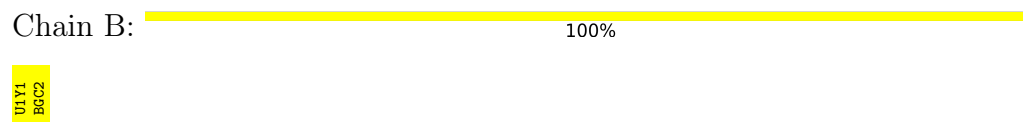
### 3 Residue-property plots [i](#)

These plots are drawn for all protein, RNA, DNA and oligosaccharide chains in the entry. The first graphic for a chain summarises the proportions of the various outlier classes displayed in the second graphic. The second graphic shows the sequence view annotated by issues in geometry and electron density. Residues are color-coded according to the number of geometric quality criteria for which they contain at least one outlier: green = 0, yellow = 1, orange = 2 and red = 3 or more. A red dot above a residue indicates a poor fit to the electron density ( $RSRZ > 2$ ). Stretches of 2 or more consecutive residues without any outlier are shown as a green connector. Residues present in the sample, but not in the model, are shown in grey.

- Molecule 1: Beta-D-glucan exohydrolase isoenzyme ExoI



- Molecule 2: beta-D-glucopyranose-(1-6)-methyl 6-thio-beta-D-glucopyranoside



## 4 Data and refinement statistics

Property	Value	Source
Space group	P 43 21 2	Depositor
Cell constants a, b, c, $\alpha$ , $\beta$ , $\gamma$	100.61Å 100.61Å 180.38Å 90.00° 90.00° 90.00°	Depositor
Resolution (Å)	45.96 – 1.89 45.09 – 1.89	Depositor EDS
% Data completeness (in resolution range)	99.7 (45.96-1.89) 99.8 (45.09-1.89)	Depositor EDS
$R_{merge}$	0.12	Depositor
$R_{sym}$	(Not available)	Depositor
$\langle I/\sigma(I) \rangle$ <sup>1</sup>	3.59 (at 1.89Å)	Xtriage
Refinement program	REFMAC 5.7.0029	Depositor
R, $R_{free}$	0.129 , 0.158 0.141 , 0.168	Depositor DCC
$R_{free}$ test set	3757 reflections (5.04%)	wwPDB-VP
Wilson B-factor (Å <sup>2</sup> )	23.6	Xtriage
Anisotropy	0.096	Xtriage
Bulk solvent $k_{sol}$ (e/Å <sup>3</sup> ), $B_{sol}$ (Å <sup>2</sup> )	0.40 , 54.8	EDS
L-test for twinning <sup>2</sup>	$\langle  L  \rangle = 0.48$ , $\langle L^2 \rangle = 0.31$	Xtriage
Estimated twinning fraction	No twinning to report.	Xtriage
$F_o, F_c$ correlation	0.97	EDS
Total number of atoms	5295	wwPDB-VP
Average B, all atoms (Å <sup>2</sup> )	29.0	wwPDB-VP

Xtriage's analysis on translational NCS is as follows: *The largest off-origin peak in the Patterson function is 3.55% of the height of the origin peak. No significant pseudotranslation is detected.*

<sup>1</sup>Intensities estimated from amplitudes.

<sup>2</sup>Theoretical values of  $\langle |L| \rangle$ ,  $\langle L^2 \rangle$  for acentric reflections are 0.5, 0.333 respectively for untwinned datasets, and 0.375, 0.2 for perfectly twinned datasets.



## 5 Model quality

### 5.1 Standard geometry

Bond lengths and bond angles in the following residue types are not validated in this section: SO4, BGC, U1Y, GOL, ACT, 1PE

The Z score for a bond length (or angle) is the number of standard deviations the observed value is removed from the expected value. A bond length (or angle) with  $|Z| > 5$  is considered an outlier worth inspection. RMSZ is the root-mean-square of all Z scores of the bond lengths (or angles).

Mol	Chain	Bond lengths		Bond angles	
		RMSZ	$\# Z  > 5$	RMSZ	$\# Z  > 5$
1	A	1.13	11/4755 (0.2%)	1.14	29/6454 (0.4%)

Chiral center outliers are detected by calculating the chiral volume of a chiral center and verifying if the center is modelled as a planar moiety or with the opposite hand. A planarity outlier is detected by checking planarity of atoms in a peptide group, atoms in a mainchain group or atoms of a sidechain that are expected to be planar.

Mol	Chain	#Chirality outliers	#Planarity outliers
1	A	0	3

All (11) bond length outliers are listed below:

Mol	Chain	Res	Type	Atoms	Z	Observed(Å)	Ideal(Å)
1	A	503	GLU	CD-OE2	11.25	1.38	1.25
1	A	254	SER	CB-OG	8.86	1.53	1.42
1	A	253	TYR	CB-CG	-7.48	1.40	1.51
1	A	426	GLN	CB-CG	-6.01	1.36	1.52
1	A	517[A]	ARG	CZ-NH1	5.98	1.40	1.33
1	A	399	THR	CB-CG2	-5.89	1.32	1.52
1	A	126	ARG	CD-NE	-5.55	1.37	1.46
1	A	254	SER	CA-CB	5.41	1.61	1.52
1	A	440[A]	ARG	CZ-NH1	5.39	1.40	1.33
1	A	175	GLU	CD-OE1	-5.38	1.19	1.25
1	A	595	TYR	CE2-CZ	-5.10	1.31	1.38

All (29) bond angle outliers are listed below:

Mol	Chain	Res	Type	Atoms	Z	Observed(°)	Ideal(°)
1	A	126	ARG	NE-CZ-NH2	-17.88	111.36	120.30
1	A	126	ARG	NE-CZ-NH1	16.76	128.68	120.30

*Continued on next page...*

Continued from previous page...

Mol	Chain	Res	Type	Atoms	Z	Observed(°)	Ideal(°)
1	A	440[A]	ARG	NE-CZ-NH2	-10.52	115.04	120.30
1	A	495	ASP	CB-CG-OD1	9.94	127.24	118.30
1	A	456	ASP	CB-CG-OD1	-9.21	110.02	118.30
1	A	351	ARG	NE-CZ-NH1	9.07	124.84	120.30
1	A	526	ARG	NE-CZ-NH2	-8.38	116.11	120.30
1	A	440[A]	ARG	NE-CZ-NH1	8.19	124.39	120.30
1	A	7	ASP	CB-CG-OD2	-8.01	111.09	118.30
1	A	243	ASP	CB-CG-OD2	-7.52	111.53	118.30
1	A	399	THR	N-CA-CB	-7.20	96.61	110.30
1	A	526	ARG	NE-CZ-NH1	6.76	123.68	120.30
1	A	592[A]	ARG	CG-CD-NE	-6.59	97.95	111.80
1	A	46	ARG	NE-CZ-NH2	6.29	123.44	120.30
1	A	173[A]	MET	CG-SD-CE	6.06	109.90	100.20
1	A	173[B]	MET	CG-SD-CE	6.06	109.90	100.20
1	A	85	ARG	NE-CZ-NH1	5.48	123.04	120.30
1	A	592[A]	ARG	NE-CZ-NH1	-5.43	117.58	120.30
1	A	18	ASP	CB-CG-OD2	5.41	123.17	118.30
1	A	468	ASP	CB-CG-OD1	5.31	123.08	118.30
1	A	569	ARG	NE-CZ-NH2	-5.29	117.66	120.30
1	A	126	ARG	CD-NE-CZ	5.26	130.96	123.60
1	A	211	ASP	CB-CG-OD1	5.25	123.02	118.30
1	A	456	ASP	CB-CG-OD2	5.20	122.98	118.30
1	A	468	ASP	CB-CG-OD2	-5.18	113.64	118.30
1	A	365	ASP	CB-CG-OD2	-5.10	113.71	118.30
1	A	421	ASP	CB-CG-OD1	5.07	122.86	118.30
1	A	517[A]	ARG	NE-CZ-NH1	-5.05	117.77	120.30
1	A	440[A]	ARG	CG-CD-NE	-5.02	101.26	111.80

There are no chirality outliers.

All (3) planarity outliers are listed below:

Mol	Chain	Res	Type	Group
1	A	217	GLY	Peptide
1	A	220	GLU	Peptide
1	A	492	THR	Peptide

## 5.2 Too-close contacts ⓘ

In the following table, the Non-H and H(model) columns list the number of non-hydrogen atoms and hydrogen atoms in the chain respectively. The H(added) column lists the number of hydrogen atoms added and optimized by MolProbity. The Clashes column lists the number of clashes within

the asymmetric unit, whereas Symm-Clashes lists symmetry-related clashes.

Mol	Chain	Non-H	H(model)	H(added)	Clashes	Symm-Clashes
1	A	4596	0	4569	61	0
2	B	25	0	10	0	0
3	A	36	0	48	4	0
4	A	18	0	12	5	0
5	A	15	0	0	0	0
6	A	4	0	3	0	0
7	A	601	0	0	19	1
All	All	5295	0	4642	69	1

The all-atom clashscore is defined as the number of clashes found per 1000 atoms (including hydrogen atoms). The all-atom clashscore for this structure is 7.

All (69) close contacts within the same asymmetric unit are listed below, sorted by their clash magnitude.

Atom-1	Atom-2	Interatomic distance (Å)	Clash overlap (Å)
4:A:708[B]:1PE:C23	7:A:848:HOH:O	1.97	1.10
1:A:466[A]:ASN:ND2	1:A:508:THR:OG1	1.94	1.00
1:A:225:ILE:HD11	1:A:229:GLY:HA3	1.48	0.93
1:A:394:ASN:HD21	1:A:404:LEU:H	1.22	0.82
3:A:705:GOL:H32	7:A:1238:HOH:O	1.81	0.79
1:A:186:LYS:NZ	7:A:807:HOH:O	2.17	0.77
1:A:227:ARG:NH2	7:A:806:HOH:O	2.16	0.76
1:A:122:TYR:CE2	1:A:126:ARG:HD2	2.20	0.76
1:A:167:ARG:HH21	1:A:171:GLN:HE22	1.34	0.75
4:A:709[A]:1PE:H152	7:A:810:HOH:O	1.86	0.74
1:A:225:ILE:HG23	1:A:256:TRP:CH2	2.26	0.70
1:A:100:GLN:HE21	1:A:100:GLN:HA	1.57	0.68
1:A:487:HIS:H	4:A:709[A]:1PE:C25	2.07	0.68
1:A:181:GLN:HE21	1:A:203:ALA:H	1.41	0.67
1:A:262:HIS:HE1	1:A:285:ASP:H	1.43	0.66
4:A:709[A]:1PE:C15	7:A:810:HOH:O	2.42	0.64
1:A:68:LYS:HE3	7:A:874:HOH:O	1.96	0.63
1:A:234:HIS:HD2	7:A:1122:HOH:O	1.81	0.63
1:A:219:ASN:OD1	1:A:220:GLU:N	2.32	0.63
1:A:493:LYS:HB3	7:A:820:HOH:O	1.99	0.62
1:A:219:ASN:CG	1:A:220:GLU:H	2.03	0.61
1:A:97:VAL:H	1:A:101:ASN:HD21	1.47	0.61
1:A:167:ARG:HH21	1:A:171:GLN:NE2	2.00	0.59
1:A:517[A]:ARG:HD3	3:A:706:GOL:O1	2.03	0.58
1:A:482[B]:VAL:CG2	1:A:512:VAL:HG11	2.34	0.58

*Continued on next page...*

*Continued from previous page...*

Atom-1	Atom-2	Interatomic distance (Å)	Clash overlap (Å)
1:A:134:GLU:OE2	1:A:377:HIS:HD2	1.87	0.58
1:A:331:HIS:HD2	7:A:1268:HOH:O	1.86	0.58
1:A:100:GLN:HE21	1:A:100:GLN:CA	2.17	0.57
1:A:225:ILE:HD11	1:A:229:GLY:CA	2.30	0.57
1:A:219:ASN:ND2	7:A:804:HOH:O	2.10	0.56
1:A:262:HIS:CE1	1:A:285:ASP:H	2.22	0.56
1:A:219:ASN:O	1:A:220:GLU:HB2	2.06	0.56
1:A:230:LEU:HB2	1:A:256:TRP:CZ2	2.41	0.55
1:A:223:THR:CG2	1:A:256:TRP:CZ3	2.90	0.54
1:A:58:GLY:H	1:A:102:ASN:ND2	2.06	0.54
3:A:706:GOL:H32	7:A:856:HOH:O	2.08	0.53
1:A:234:HIS:HE1	7:A:1290:HOH:O	1.93	0.52
4:A:710:1PE:H142	7:A:857:HOH:O	2.10	0.51
3:A:705:GOL:C3	7:A:1238:HOH:O	2.50	0.51
1:A:223:THR:HG21	1:A:256:TRP:CZ3	2.46	0.51
1:A:167:ARG:NH2	1:A:171:GLN:HE22	2.05	0.50
1:A:220:GLU:HG2	1:A:291[B]:ARG:NH2	2.27	0.50
1:A:220:GLU:HA	1:A:291[B]:ARG:NH2	2.27	0.50
1:A:575[A]:VAL:HG22	7:A:1125:HOH:O	2.11	0.49
1:A:219:ASN:CG	1:A:220:GLU:N	2.66	0.49
1:A:482[B]:VAL:HG21	1:A:512:VAL:HG11	1.95	0.49
1:A:223:THR:HG22	1:A:256:TRP:CZ3	2.49	0.48
1:A:466[A]:ASN:ND2	1:A:508:THR:HG1	2.09	0.48
1:A:301:SER:O	1:A:331:HIS:HE1	1.97	0.47
1:A:97:VAL:H	1:A:101:ASN:ND2	2.12	0.47
1:A:186:LYS:HE2	1:A:186:LYS:H	1.80	0.46
1:A:490:THR:O	1:A:491[B]:GLU:C	2.53	0.46
1:A:181:GLN:HE22	1:A:247:SER:H	1.64	0.46
1:A:437:ASP:HB3	1:A:441:THR:HG21	1.99	0.45
1:A:575[B]:VAL:HG13	1:A:578:LEU:HD12	1.98	0.45
1:A:134:GLU:OE2	1:A:377:HIS:CD2	2.68	0.44
1:A:399:THR:CG2	7:A:869:HOH:O	2.66	0.43
1:A:586:HIS:HD2	7:A:1142:HOH:O	2.02	0.43
1:A:225:ILE:CD1	1:A:229:GLY:HA3	2.35	0.42
1:A:222:ASN:ND2	1:A:224:ILE:HD13	2.35	0.42
1:A:218:ILE:HD11	1:A:221:ASN:OD1	2.19	0.42
1:A:489:TYR:CD1	1:A:494:GLY:HA3	2.55	0.42
1:A:224:ILE:HG23	1:A:224:ILE:O	2.21	0.41
1:A:225:ILE:HG23	1:A:256:TRP:CZ2	2.55	0.41
1:A:169:ILE:O	1:A:173[A]:MET:HG2	2.21	0.40
1:A:219:ASN:HB3	1:A:491[B]:GLU:OE1	2.21	0.40

*Continued on next page...*

*Continued from previous page...*

Atom-1	Atom-2	Interatomic distance (Å)	Clash overlap (Å)
1:A:223:THR:HG21	1:A:256:TRP:HZ3	1.86	0.40

All (1) symmetry-related close contacts are listed below. The label for Atom-2 includes the symmetry operator and encoded unit-cell translations to be applied.

Atom-1	Atom-2	Interatomic distance (Å)	Clash overlap (Å)
7:A:1250:HOH:O	7:A:1270:HOH:O[6_455]	2.14	0.06

## 5.3 Torsion angles [i](#)

### 5.3.1 Protein backbone [i](#)

In the following table, the Percentiles column shows the percent Ramachandran outliers of the chain as a percentile score with respect to all X-ray entries followed by that with respect to entries of similar resolution.

The Analysed column shows the number of residues for which the backbone conformation was analysed, and the total number of residues.

Mol	Chain	Analysed	Favoured	Allowed	Outliers	Percentiles
1	A	612/609 (100%)	591 (97%)	20 (3%)	1 (0%)	47 38

All (1) Ramachandran outliers are listed below:

Mol	Chain	Res	Type
1	A	505	GLY

### 5.3.2 Protein sidechains [i](#)

In the following table, the Percentiles column shows the percent sidechain outliers of the chain as a percentile score with respect to all X-ray entries followed by that with respect to entries of similar resolution.

The Analysed column shows the number of residues for which the sidechain conformation was analysed, and the total number of residues.

Mol	Chain	Analysed	Rotameric	Outliers	Percentiles
1	A	496/490 (101%)	482 (97%)	14 (3%)	43 36

All (14) residues with a non-rotameric sidechain are listed below:

Mol	Chain	Res	Type
1	A	36	GLU
1	A	63	LYS
1	A	90	MET
1	A	98	HIS
1	A	100	GLN
1	A	186	LYS
1	A	218	ILE
1	A	220	GLU
1	A	225	ILE
1	A	290	ASP
1	A	399	THR
1	A	440[A]	ARG
1	A	482[A]	VAL
1	A	482[B]	VAL

Sometimes sidechains can be flipped to improve hydrogen bonding and reduce clashes. All (13) such sidechains are listed below:

Mol	Chain	Res	Type
1	A	71	GLN
1	A	100	GLN
1	A	101	ASN
1	A	102	ASN
1	A	112	ASN
1	A	171	GLN
1	A	181	GLN
1	A	199	ASN
1	A	234	HIS
1	A	262	HIS
1	A	331	HIS
1	A	377	HIS
1	A	394	ASN

### 5.3.3 RNA ⓘ

There are no RNA molecules in this entry.

## 5.4 Non-standard residues in protein, DNA, RNA chains ⓘ

There are no non-standard protein/DNA/RNA residues in this entry.

## 5.5 Carbohydrates ⓘ

3 monosaccharides are modelled in this entry.

In the following table, the Counts columns list the number of bonds (or angles) for which Mogul statistics could be retrieved, the number of bonds (or angles) that are observed in the model and the number of bonds (or angles) that are defined in the Chemical Component Dictionary. The Link column lists molecule types, if any, to which the group is linked. The Z score for a bond length (or angle) is the number of standard deviations the observed value is removed from the expected value. A bond length (or angle) with  $|Z| > 2$  is considered an outlier worth inspection. RMSZ is the root-mean-square of all Z scores of the bond lengths (or angles).

Mol	Type	Chain	Res	Link	Bond lengths			Bond angles		
					Counts	RMSZ	# Z  > 2	Counts	RMSZ	# Z  > 2
2	U1Y	B	1[A]	-	13,13,13	1.42	3 (23%)	18,18,18	1.89	6 (33%)
2	U1Y	B	1[B]	-	13,13,13	1.42	3 (23%)	18,18,18	2.09	6 (33%)
2	BGC	B	2	2	11,11,12	1.71	3 (27%)	15,15,17	1.66	4 (26%)

In the following table, the Chirals column lists the number of chiral outliers, the number of chiral centers analysed, the number of these observed in the model and the number defined in the Chemical Component Dictionary. Similar counts are reported in the Torsion and Rings columns. '-' means no outliers of that kind were identified.

Mol	Type	Chain	Res	Link	Chirals	Torsions	Rings
2	U1Y	B	1[A]	-	-	0/4/24/24	0/1/1/1
2	U1Y	B	1[B]	-	-	2/4/24/24	0/1/1/1
2	BGC	B	2	2	-	0/2/19/22	0/1/1/1

All (9) bond length outliers are listed below:

Mol	Chain	Res	Type	Atoms	Z	Observed(Å)	Ideal(Å)
2	B	2	BGC	O3-C3	3.30	1.50	1.43
2	B	1[A]	U1Y	O5-C1	2.45	1.48	1.41
2	B	1[B]	U1Y	O5-C1	2.45	1.48	1.41
2	B	1[A]	U1Y	O1-C1	2.27	1.44	1.40
2	B	1[B]	U1Y	O1-C1	2.27	1.44	1.40
2	B	2	BGC	C1-C2	2.23	1.57	1.52
2	B	1[A]	U1Y	C3-C4	2.07	1.57	1.52
2	B	1[B]	U1Y	C3-C4	2.07	1.57	1.52
2	B	2	BGC	O5-C1	2.04	1.47	1.43

All (16) bond angle outliers are listed below:

Mol	Chain	Res	Type	Atoms	Z	Observed(°)	Ideal(°)
2	B	1[B]	U1Y	C7-O1-C1	4.37	120.03	113.27
2	B	1[A]	U1Y	O1-C1-C2	4.08	112.93	108.15
2	B	1[B]	U1Y	O1-C1-C2	4.08	112.93	108.15
2	B	1[A]	U1Y	O3-C3-C4	-3.07	103.24	110.35
2	B	1[B]	U1Y	O3-C3-C4	-3.07	103.24	110.35
2	B	2	BGC	C3-C4-C5	-2.93	105.02	110.24
2	B	2	BGC	O5-C5-C4	-2.89	103.80	110.83
2	B	1[A]	U1Y	C1-C2-C3	-2.82	104.12	110.00
2	B	1[B]	U1Y	C1-C2-C3	-2.82	104.12	110.00
2	B	2	BGC	O5-C5-C6	2.72	111.47	107.20
2	B	1[A]	U1Y	O2-C2-C1	-2.65	103.60	110.05
2	B	1[B]	U1Y	O2-C2-C1	-2.65	103.60	110.05
2	B	1[A]	U1Y	O5-C1-O1	-2.57	105.02	110.97
2	B	1[B]	U1Y	O5-C1-O1	-2.57	105.02	110.97
2	B	2	BGC	C1-O5-C5	2.39	115.44	112.19
2	B	1[A]	U1Y	C7-O1-C1	2.31	116.84	113.27

There are no chirality outliers.

All (2) torsion outliers are listed below:

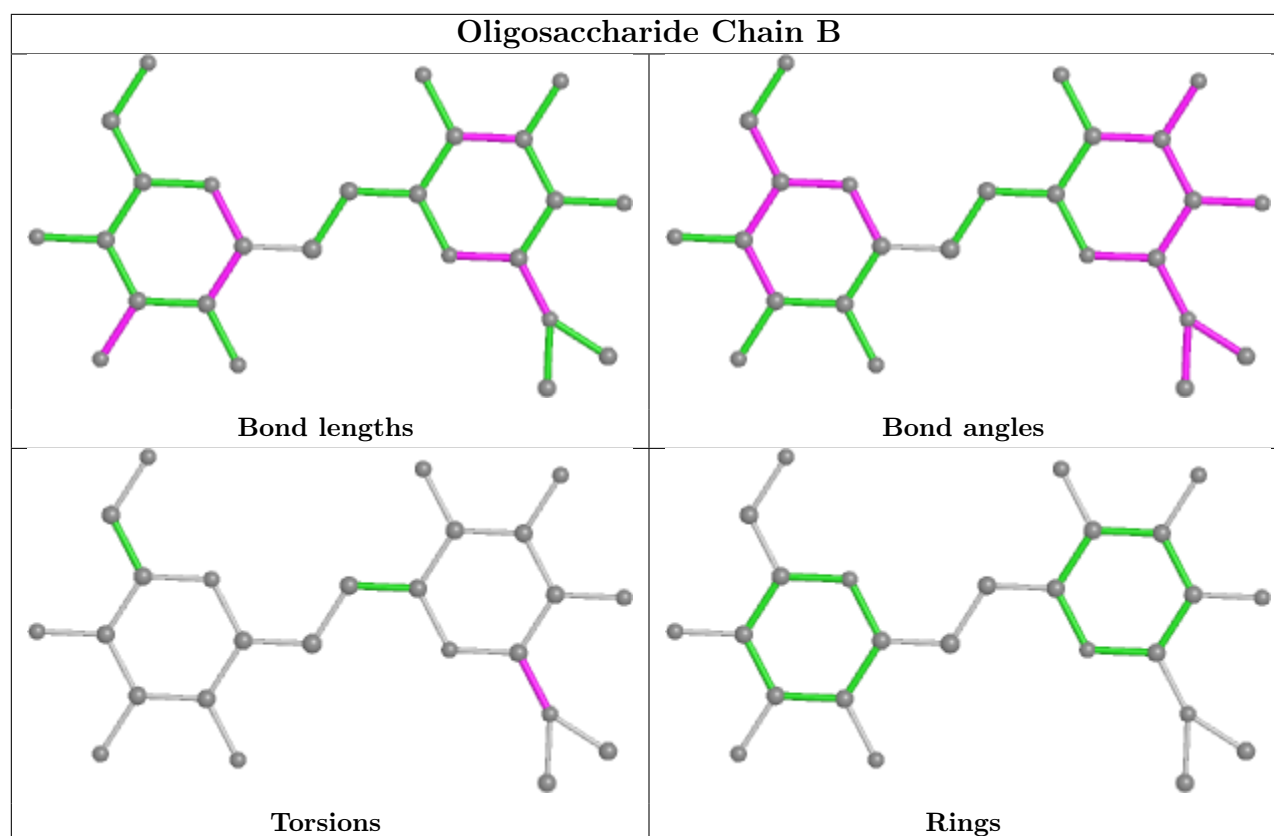
Mol	Chain	Res	Type	Atoms
2	B	1[B]	U1Y	O5-C1-O1-C7
2	B	1[B]	U1Y	C2-C1-O1-C7

There are no ring outliers.

No monomer is involved in short contacts.

The following is a two-dimensional graphical depiction of Mogul quality analysis of bond lengths, bond angles, torsion angles, and ring geometry for oligosaccharide.





## 5.6 Ligand geometry [i](#)

13 ligands are modelled in this entry.

In the following table, the Counts columns list the number of bonds (or angles) for which Mogul statistics could be retrieved, the number of bonds (or angles) that are observed in the model and the number of bonds (or angles) that are defined in the Chemical Component Dictionary. The Link column lists molecule types, if any, to which the group is linked. The Z score for a bond length (or angle) is the number of standard deviations the observed value is removed from the expected value. A bond length (or angle) with  $|Z| > 2$  is considered an outlier worth inspection. RMSZ is the root-mean-square of all Z scores of the bond lengths (or angles).

Mol	Type	Chain	Res	Link	Bond lengths			Bond angles		
					Counts	RMSZ	$\# Z  > 2$	Counts	RMSZ	$\# Z  > 2$
3	GOL	A	706	-	5,5,5	0.53	0	5,5,5	0.73	0
3	GOL	A	707	-	5,5,5	0.72	0	5,5,5	1.00	0
3	GOL	A	703	-	5,5,5	0.54	0	5,5,5	1.49	0
5	SO4	A	713	-	4,4,4	0.52	0	6,6,6	1.19	1 (16%)
5	SO4	A	711	-	4,4,4	0.60	0	6,6,6	0.89	0
3	GOL	A	705	-	5,5,5	0.41	0	5,5,5	0.95	0
5	SO4	A	712	-	4,4,4	0.56	0	6,6,6	0.33	0
4	1PE	A	710	-	6,6,15	0.81	0	5,5,14	0.72	0
6	ACT	A	714	-	3,3,3	0.91	0	3,3,3	1.46	0

Mol	Type	Chain	Res	Link	Bond lengths			Bond angles		
					Counts	RMSZ	# Z  > 2	Counts	RMSZ	# Z  > 2
3	GOL	A	704	-	5,5,5	0.59	0	5,5,5	0.90	0
3	GOL	A	702	-	5,5,5	0.57	0	5,5,5	0.95	0

In the following table, the Chirals column lists the number of chiral outliers, the number of chiral centers analysed, the number of these observed in the model and the number defined in the Chemical Component Dictionary. Similar counts are reported in the Torsion and Rings columns. '-' means no outliers of that kind were identified.

Mol	Type	Chain	Res	Link	Chirals	Torsions	Rings
3	GOL	A	706	-	-	4/4/4/4	-
3	GOL	A	707	-	-	0/4/4/4	-
3	GOL	A	703	-	-	3/4/4/4	-
3	GOL	A	705	-	-	2/4/4/4	-
4	1PE	A	710	-	-	0/4/4/13	-
3	GOL	A	704	-	-	3/4/4/4	-
3	GOL	A	702	-	-	3/4/4/4	-

There are no bond length outliers.

All (1) bond angle outliers are listed below:

Mol	Chain	Res	Type	Atoms	Z	Observed(°)	Ideal(°)
5	A	713	SO4	O4-S-O3	-2.56	98.13	109.06

There are no chirality outliers.

All (15) torsion outliers are listed below:

Mol	Chain	Res	Type	Atoms
3	A	703	GOL	C1-C2-C3-O3
3	A	703	GOL	O2-C2-C3-O3
3	A	704	GOL	C1-C2-C3-O3
3	A	705	GOL	C1-C2-C3-O3
3	A	706	GOL	O1-C1-C2-C3
3	A	706	GOL	C1-C2-C3-O3
3	A	702	GOL	O1-C1-C2-O2
3	A	702	GOL	O1-C1-C2-C3
3	A	703	GOL	O1-C1-C2-C3
3	A	704	GOL	O1-C1-C2-C3
3	A	705	GOL	O2-C2-C3-O3
3	A	706	GOL	O2-C2-C3-O3
3	A	706	GOL	O1-C1-C2-O2

*Continued on next page...*

*Continued from previous page...*

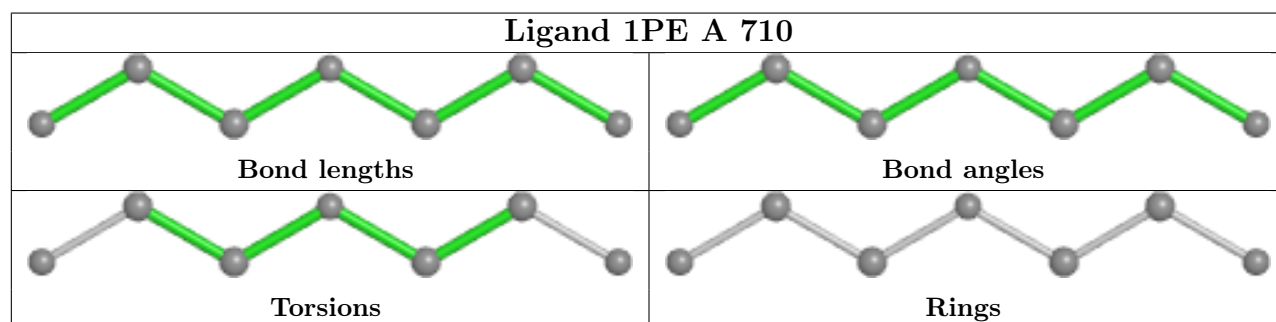
Mol	Chain	Res	Type	Atoms
3	A	704	GOL	O2-C2-C3-O3
3	A	702	GOL	O2-C2-C3-O3

There are no ring outliers.

3 monomers are involved in 5 short contacts:

Mol	Chain	Res	Type	Clashes	Symm-Clashes
3	A	706	GOL	2	0
3	A	705	GOL	2	0
4	A	710	1PE	1	0

The following is a two-dimensional graphical depiction of Mogul quality analysis of bond lengths, bond angles, torsion angles, and ring geometry for all instances of the Ligand of Interest. In addition, ligands with molecular weight > 250 and outliers as shown on the validation Tables will also be included. For torsion angles, if less than 5% of the Mogul distribution of torsion angles is within 10 degrees of the torsion angle in question, then that torsion angle is considered an outlier. Any bond that is central to one or more torsion angles identified as an outlier by Mogul will be highlighted in the graph. For rings, the root-mean-square deviation (RMSD) between the ring in question and similar rings identified by Mogul is calculated over all ring torsion angles. If the average RMSD is greater than 60 degrees and the minimal RMSD between the ring in question and any Mogul-identified rings is also greater than 60 degrees, then that ring is considered an outlier. The outliers are highlighted in purple. The color gray indicates Mogul did not find sufficient equivalents in the CSD to analyse the geometry.



## 5.7 Other polymers [i](#)

There are no such residues in this entry.

## 5.8 Polymer linkage issues [i](#)

There are no chain breaks in this entry.

## 6 Fit of model and data ⓘ

### 6.1 Protein, DNA and RNA chains ⓘ

In the following table, the column labelled ‘#RSRZ> 2’ contains the number (and percentage) of RSRZ outliers, followed by percent RSRZ outliers for the chain as percentile scores relative to all X-ray entries and entries of similar resolution. The OWAB column contains the minimum, median, 95<sup>th</sup> percentile and maximum values of the occupancy-weighted average B-factor per residue. The column labelled ‘Q< 0.9’ lists the number of (and percentage) of residues with an average occupancy less than 0.9.

Mol	Chain	Analysed	<RSRZ>	#RSRZ>2	OWAB(Å <sup>2</sup> )	Q<0.9
1	A	603/609 (99%)	-0.08	34 (5%) 24 27	15, 22, 52, 147	0

All (34) RSRZ outliers are listed below:

Mol	Chain	Res	Type	RSRZ
1	A	219	ASN	9.0
1	A	215	VAL	7.7
1	A	218	ILE	7.6
1	A	220	GLU	7.3
1	A	224	ILE	7.0
1	A	586	HIS	6.8
1	A	497	LEU	5.4
1	A	216	ASP	5.3
1	A	585	ALA	5.3
1	A	227	ARG	5.1
1	A	228	GLU	5.1
1	A	226	ASN	4.9
1	A	186	LYS	4.9
1	A	217	GLY	4.8
1	A	256	TRP	4.7
1	A	225	ILE	4.6
1	A	222	ASN	4.3
1	A	582	VAL	4.2
1	A	187	ASP	4.0
1	A	492	THR	4.0
1	A	294	THR	3.2
1	A	221	ASN	3.1
1	A	587	TYR	3.1
1	A	257	ASN	3.0
1	A	493	LYS	2.8
1	A	496	ASN	2.7
1	A	584	ASP	2.6

*Continued on next page...*

*Continued from previous page...*

Mol	Chain	Res	Type	RSRZ
1	A	0	ALA	2.5
1	A	214	THR	2.5
1	A	2	TYR	2.4
1	A	232	ASN	2.4
1	A	583	GLY	2.3
1	A	223	THR	2.2
1	A	504	PRO	2.1

## 6.2 Non-standard residues in protein, DNA, RNA chains [i](#)

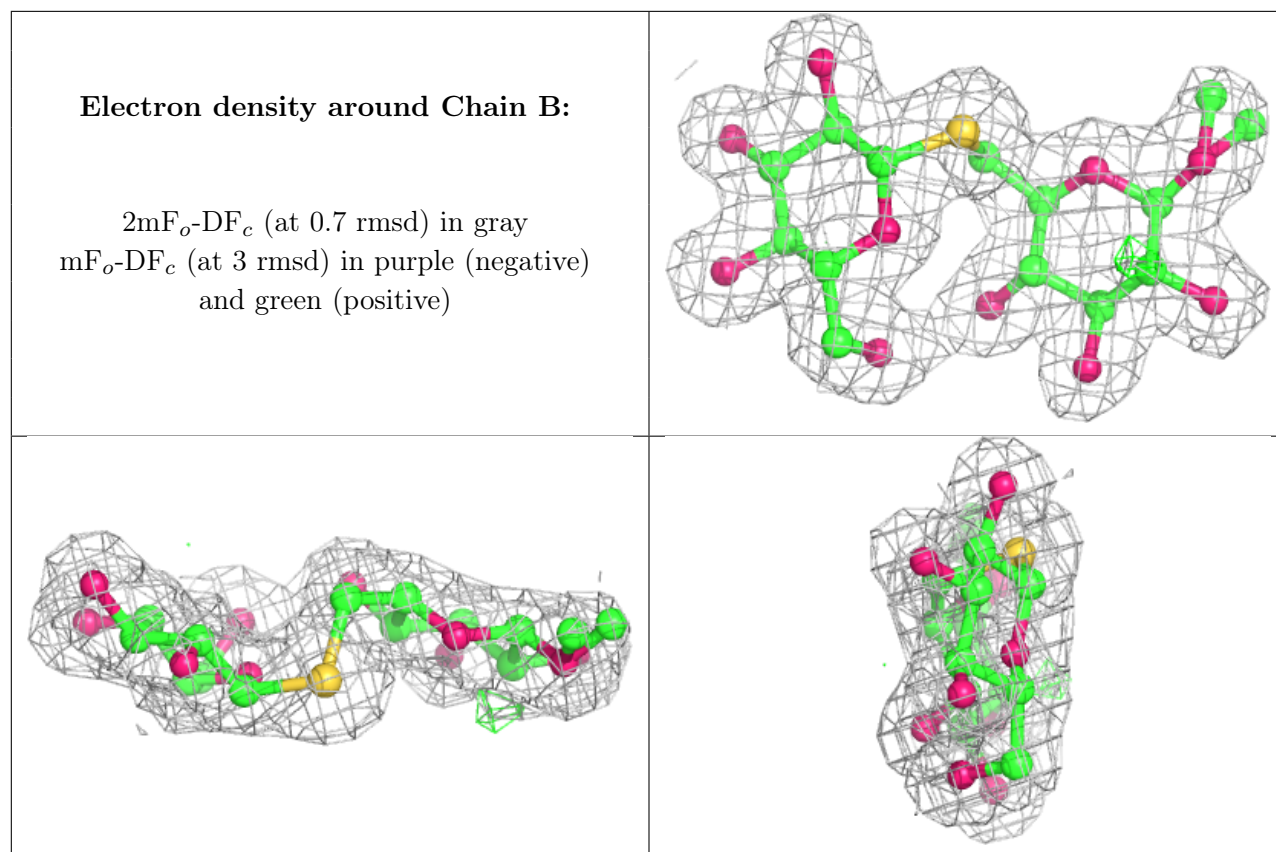
There are no non-standard protein/DNA/RNA residues in this entry.

## 6.3 Carbohydrates [i](#)

In the following table, the Atoms column lists the number of modelled atoms in the group and the number defined in the chemical component dictionary. The B-factors column lists the minimum, median, 95<sup>th</sup> percentile and maximum values of B factors of atoms in the group. The column labelled 'Q< 0.9' lists the number of atoms with occupancy less than 0.9.

Mol	Type	Chain	Res	Atoms	RSCC	RSR	B-factors(Å <sup>2</sup> )	Q<0.9
2	U1Y	B	1[A]	13/13	0.99	0.10	17,20,26,26	1
2	U1Y	B	1[B]	13/13	0.99	0.10	17,20,23,26	1
2	BGC	B	2	11/12	0.99	0.15	15,16,19,19	0

The following is a graphical depiction of the model fit to experimental electron density for oligosaccharide. Each fit is shown from different orientation to approximate a three-dimensional view.

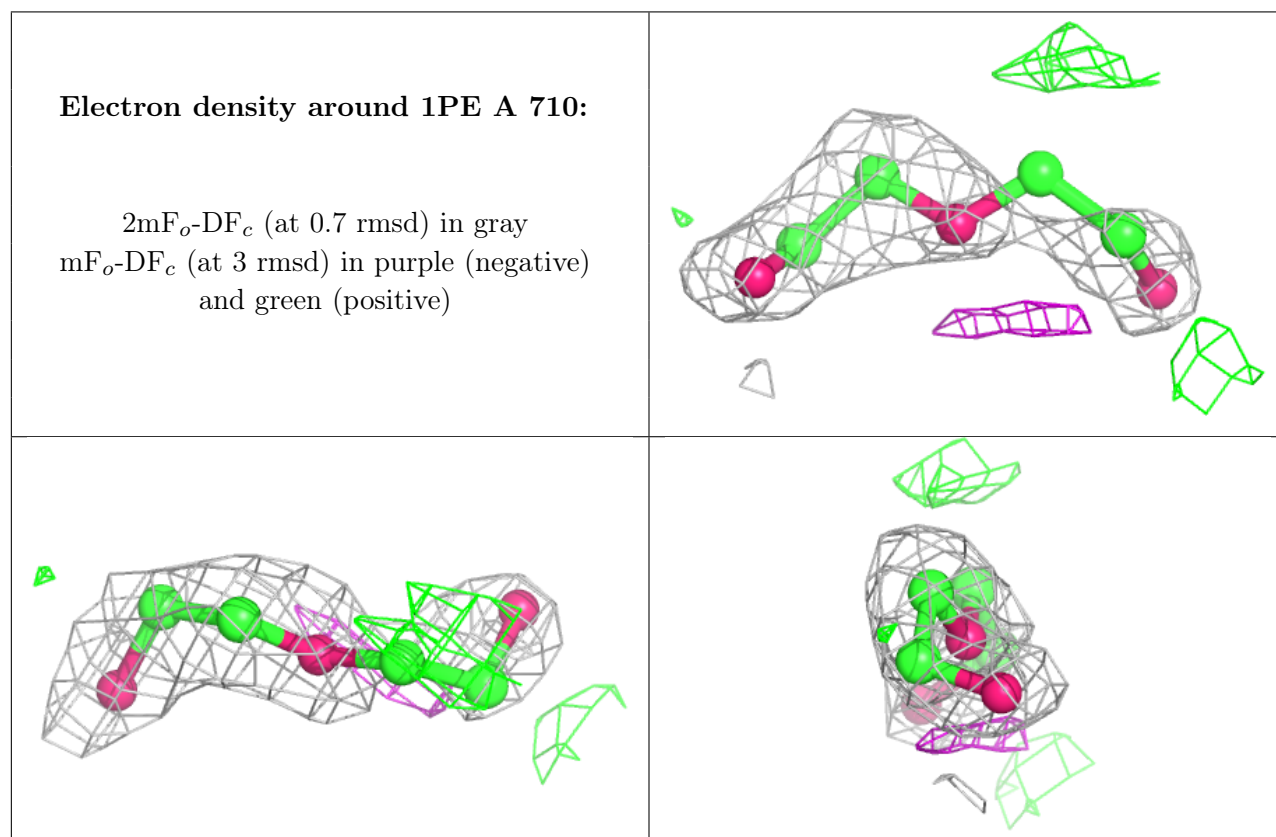


## 6.4 Ligands [i](#)

In the following table, the Atoms column lists the number of modelled atoms in the group and the number defined in the chemical component dictionary. The B-factors column lists the minimum, median, 95<sup>th</sup> percentile and maximum values of B factors of atoms in the group. The column labelled 'Q<0.9' lists the number of atoms with occupancy less than 0.9.

Mol	Type	Chain	Res	Atoms	RSCC	RSR	B-factors( $\text{\AA}^2$ )	Q<0.9
3	GOL	A	704	6/6	0.84	0.13	53,56,57,65	0
6	ACT	A	714	4/4	0.85	0.25	37,57,59,67	0
4	1PE	A	710	7/16	0.87	0.26	50,55,64,73	0
4	1PE	A	709[A]	6/16	0.89	0.15	22,62,66,67	0
3	GOL	A	705	6/6	0.90	0.19	36,55,57,65	0
4	1PE	A	708[B]	5/16	0.93	0.23	33,46,49,57	0
5	SO4	A	712	5/5	0.93	0.24	73,76,88,95	0
3	GOL	A	702	6/6	0.93	0.13	28,35,37,37	0
3	GOL	A	707	6/6	0.94	0.13	21,35,41,44	0
5	SO4	A	711	5/5	0.95	0.11	25,28,31,35	5
3	GOL	A	703	6/6	0.95	0.12	52,58,59,61	0
3	GOL	A	706	6/6	0.95	0.12	33,41,58,59	0
5	SO4	A	713	5/5	0.97	0.07	21,26,31,31	5

The following is a graphical depiction of the model fit to experimental electron density of all instances of the Ligand of Interest. In addition, ligands with molecular weight > 250 and outliers as shown on the geometry validation Tables will also be included. Each fit is shown from different orientation to approximate a three-dimensional view.



## 6.5 Other polymers [i](#)

There are no such residues in this entry.