



Full wwPDB X-ray Structure Validation Report ⓘ

Aug 7, 2020 – 01:40 PM BST

PDB ID : 5LFU
Title : Myelin-associated glycoprotein (MAG) glycosylated and lysine-methylated full extracellular domain
Authors : Pronker, M.F.; Janssen, B.J.C.
Deposited on : 2016-07-04
Resolution : 4.30 Å(reported)

This is a Full wwPDB X-ray Structure Validation Report for a publicly released PDB entry.

We welcome your comments at validation@mail.wwpdb.org

A user guide is available at

<https://www.wwpdb.org/validation/2017/XrayValidationReportHelp>

with specific help available everywhere you see the ⓘ symbol.

The following versions of software and data (see [references ⓘ](#)) were used in the production of this report:

MolProbity : 4.02b-467
Mogul : 1.8.5 (274361), CSD as541be (2020)
Xtriage (Phenix) : 1.13
EDS : 2.13.1
Percentile statistics : 20191225.v01 (using entries in the PDB archive December 25th 2019)
Refmac : 5.8.0158
CCP4 : 7.0.044 (Gargrove)
Ideal geometry (proteins) : Engh & Huber (2001)
Ideal geometry (DNA, RNA) : Parkinson et al. (1996)
Validation Pipeline (wwPDB-VP) : 2.13.1

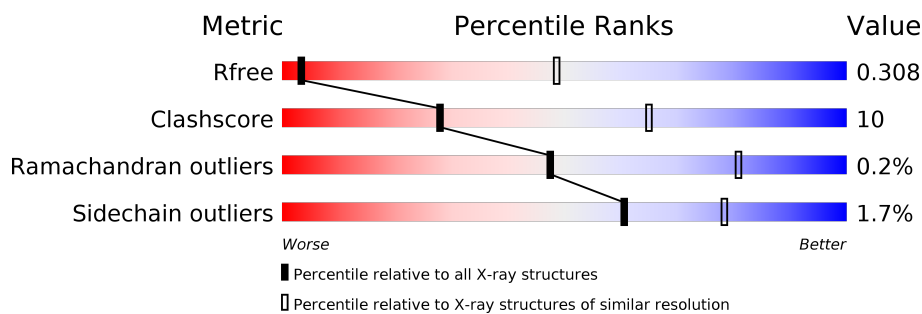
1 Overall quality at a glance

The following experimental techniques were used to determine the structure:

X-RAY DIFFRACTION

The reported resolution of this entry is 4.30 Å.

Percentile scores (ranging between 0-100) for global validation metrics of the entry are shown in the following graphic. The table shows the number of entries on which the scores are based.



Metric	Whole archive (#Entries)	Similar resolution (#Entries, resolution range(Å))
R_{free}	130704	1014 (4.80-3.80)
Clashscore	141614	1077 (4.80-3.80)
Ramachandran outliers	138981	1029 (4.80-3.80)
Sidechain outliers	138945	1012 (4.80-3.80)

The table below summarises the geometric issues observed across the polymeric chains and their fit to the electron density. The red, orange, yellow and green segments on the lower bar indicate the fraction of residues that contain outliers for ≥ 3 , 2, 1 and 0 types of geometric quality criteria respectively. A grey segment represents the fraction of residues that are not modelled. The numeric value for each fraction is indicated below the corresponding segment, with a dot representing fractions $\leq 5\%$.

Mol	Chain	Length	Quality of chain
1	A	500	
2	B	5	
3	C	2	
4	D	2	

The following table lists non-polymeric compounds, carbohydrate monomers and non-standard residues in protein, DNA, RNA chains that are outliers for geometric or electron-density-fit criteria:

Mol	Type	Chain	Res	Chirality	Geometry	Clashes	Electron density
3	NAG	C	1	X	-	-	-

2 Entry composition [i](#)

There are 6 unique types of molecules in this entry. The entry contains 3942 atoms, of which 0 are hydrogens and 0 are deuteriums.

In the tables below, the ZeroOcc column contains the number of atoms modelled with zero occupancy, the AltConf column contains the number of residues with at least one atom in alternate conformation and the Trace column contains the number of residues modelled with at most 2 atoms.

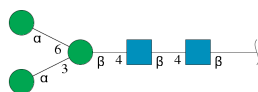
- Molecule 1 is a protein called Myelin-associated glycoprotein.

Mol	Chain	Residues	Atoms					ZeroOcc	AltConf	Trace
1	A	487	Total	C	N	O	S	0	0	0
			3776	2397	630	729	20			

There are 11 discrepancies between the modelled and reference sequences:

Chain	Residue	Modelled	Actual	Comment	Reference
A	18	GLY	-	expression tag	UNP P20917
A	19	SER	-	expression tag	UNP P20917
A	509	ALA	-	expression tag	UNP P20917
A	510	ALA	-	expression tag	UNP P20917
A	511	ALA	-	expression tag	UNP P20917
A	512	HIS	-	expression tag	UNP P20917
A	513	HIS	-	expression tag	UNP P20917
A	514	HIS	-	expression tag	UNP P20917
A	515	HIS	-	expression tag	UNP P20917
A	516	HIS	-	expression tag	UNP P20917
A	517	HIS	-	expression tag	UNP P20917

- Molecule 2 is an oligosaccharide called alpha-D-mannopyranose-(1-3)-[alpha-D-mannopyranose-(1-6)]beta-D-mannopyranose-(1-4)-2-acetamido-2-deoxy-beta-D-glucopyranose-(1-4)-2-acetamido-2-deoxy-beta-D-glucopyranose.



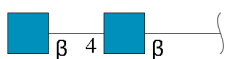
Mol	Chain	Residues	Atoms				ZeroOcc	AltConf	Trace
2	B	5	Total	C	N	O	0	0	0
			61	34	2	25			

- Molecule 3 is an oligosaccharide called alpha-L-fucopyranose-(1-6)-2-acetamido-2-deoxy-beta-D-glucopyranose.



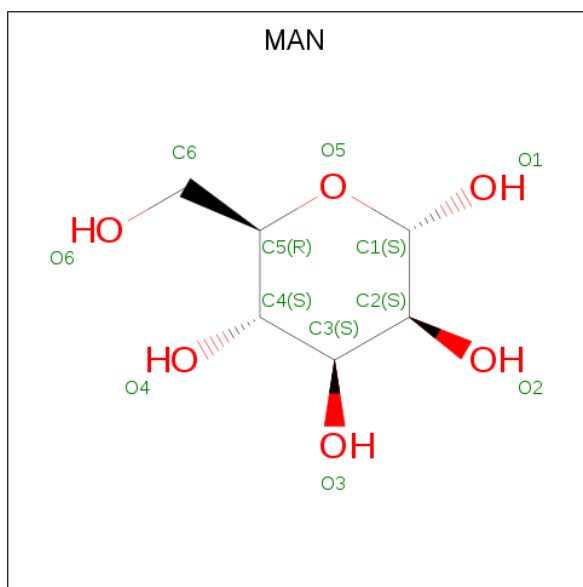
Mol	Chain	Residues	Atoms				ZeroOcc	AltConf	Trace
3	C	2	Total	C	N	O	0	0	0
			24	14	1	9			

- Molecule 4 is an oligosaccharide called 2-acetamido-2-deoxy-beta-D-glucopyranose-(1-4)-2-acetamido-2-deoxy-beta-D-glucopyranose.



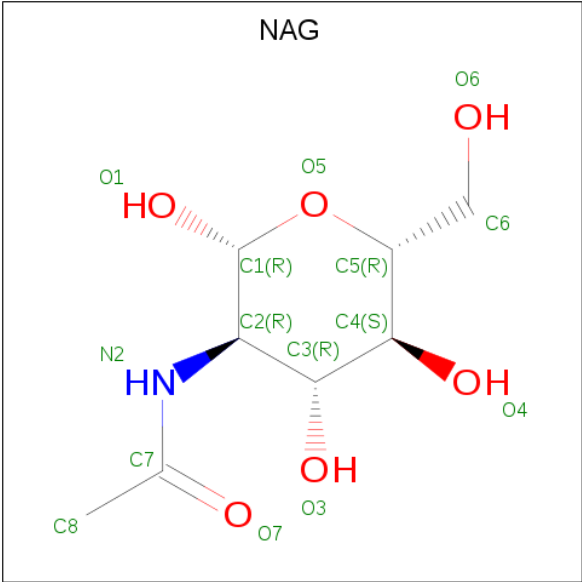
Mol	Chain	Residues	Atoms				ZeroOcc	AltConf	Trace
4	D	2	Total	C	N	O	0	0	0
			28	16	2	10			

- Molecule 5 is alpha-D-mannopyranose (three-letter code: MAN) (formula: C₆H₁₂O₆).



Mol	Chain	Residues	Atoms			ZeroOcc	AltConf
5	A	1	Total	C	O	0	0
			11	6	5		

- Molecule 6 is 2-acetamido-2-deoxy-beta-D-glucopyranose (three-letter code: NAG) (formula: C₈H₁₅NO₆).

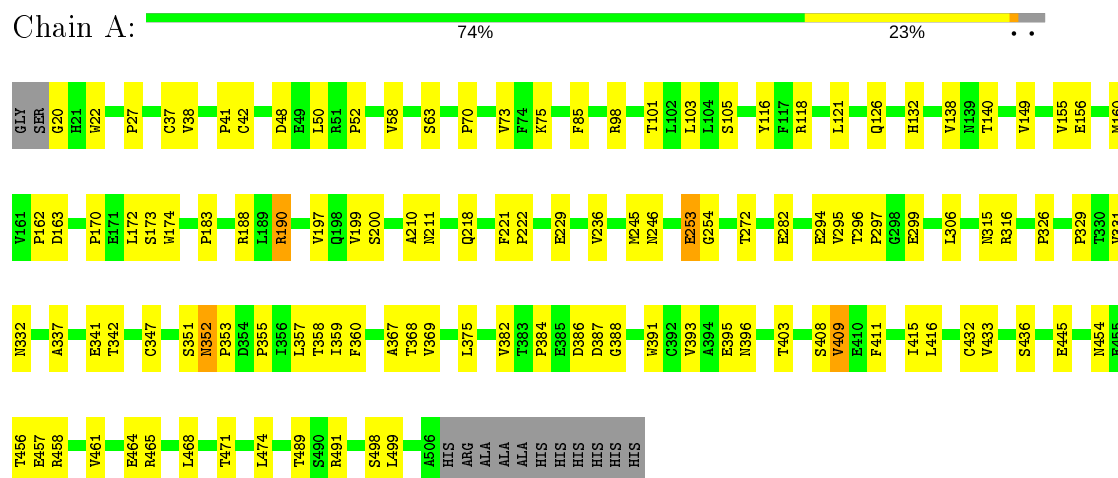


Mol	Chain	Residues	Atoms				ZeroOcc	AltConf
6	A	1	Total	C	N	O	0	0
			14	8	1	5		
6	A	1	Total	C	N	O	0	0
			14	8	1	5		
6	A	1	Total	C	N	O	0	0
			14	8	1	5		

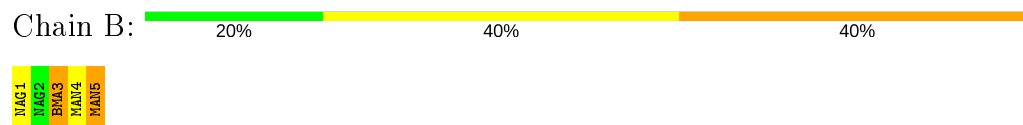
3 Residue-property plots [i](#)

These plots are drawn for all protein, RNA, DNA and oligosaccharide chains in the entry. The first graphic for a chain summarises the proportions of the various outlier classes displayed in the second graphic. The second graphic shows the sequence view annotated by issues in geometry. Residues are color-coded according to the number of geometric quality criteria for which they contain at least one outlier: green = 0, yellow = 1, orange = 2 and red = 3 or more. Stretches of 2 or more consecutive residues without any outlier are shown as a green connector. Residues present in the sample, but not in the model, are shown in grey.

- Molecule 1: Myelin-associated glycoprotein



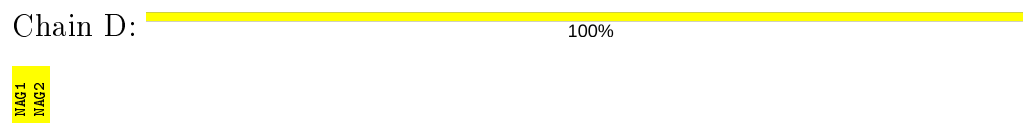
- Molecule 2: alpha-D-mannopyranose-(1-3)-[alpha-D-mannopyranose-(1-6)]beta-D-mannopyranose-(1-4)-2-acetamido-2-deoxy-beta-D-glucopyranose-(1-4)-2-acetamido-2-deoxy-beta-D-glucopyranose



- Molecule 3: alpha-L-fucopyranose-(1-6)-2-acetamido-2-deoxy-beta-D-glucopyranose



- Molecule 4: 2-acetamido-2-deoxy-beta-D-glucopyranose-(1-4)-2-acetamido-2-deoxy-beta-D-glucopyranose



4 Data and refinement statistics

Property	Value	Source
Space group	P 65 2 2	Depositor
Cell constants a, b, c, α , β , γ	101.24Å 101.24Å 687.48Å 90.00° 90.00° 120.00°	Depositor
Resolution (Å)	114.58 – 4.30 114.58 – 4.30	Depositor EDS
% Data completeness (in resolution range)	100.0 (114.58-4.30) 91.0 (114.58-4.30)	Depositor EDS
R_{merge}	0.12	Depositor
R_{sym}	(Not available)	Depositor
$\langle I/\sigma(I) \rangle$ ¹	0.79 (at 4.30Å)	Xtriage
Refinement program	PHENIX 1.9_1692	Depositor
R, R_{free}	0.285 , 0.295 0.296 , 0.308	Depositor DCC
R_{free} test set	769 reflections (4.98%)	wwPDB-VP
Wilson B-factor (Å ²)	240.5	Xtriage
Anisotropy	0.226	Xtriage
Bulk solvent k_{sol} (e/Å ³), B_{sol} (Å ²)	0.39 , 592.6	EDS
L-test for twinning ²	$\langle L \rangle = 0.44$, $\langle L^2 \rangle = 0.27$	Xtriage
Estimated twinning fraction	No twinning to report.	Xtriage
F_o, F_c correlation	0.89	EDS
Total number of atoms	3942	wwPDB-VP
Average B, all atoms (Å ²)	420.0	wwPDB-VP

Xtriage's analysis on translational NCS is as follows: *The largest off-origin peak in the Patterson function is 2.84% of the height of the origin peak. No significant pseudotranslation is detected.*

¹Intensities estimated from amplitudes.

²Theoretical values of $\langle |L| \rangle$, $\langle L^2 \rangle$ for acentric reflections are 0.5, 0.333 respectively for untwinned datasets, and 0.375, 0.2 for perfectly twinned datasets.

5 Model quality [i](#)

5.1 Standard geometry [i](#)

Bond lengths and bond angles in the following residue types are not validated in this section: FUC, BMA, NAG, MAN

The Z score for a bond length (or angle) is the number of standard deviations the observed value is removed from the expected value. A bond length (or angle) with $|Z| > 5$ is considered an outlier worth inspection. RMSZ is the root-mean-square of all Z scores of the bond lengths (or angles).

Mol	Chain	Bond lengths		Bond angles	
		RMSZ	$\# Z > 5$	RMSZ	$\# Z > 5$
1	A	0.37	0/3872	0.57	1/5297 (0.0%)

There are no bond length outliers.

All (1) bond angle outliers are listed below:

Mol	Chain	Res	Type	Atoms	Z	Observed($^{\circ}$)	Ideal($^{\circ}$)
1	A	468	LEU	CA-CB-CG	5.35	127.60	115.30

There are no chirality outliers.

There are no planarity outliers.

5.2 Too-close contacts [i](#)

In the following table, the Non-H and H(model) columns list the number of non-hydrogen atoms and hydrogen atoms in the chain respectively. The H(added) column lists the number of hydrogen atoms added and optimized by MolProbity. The Clashes column lists the number of clashes within the asymmetric unit, whereas Symm-Clashes lists symmetry related clashes.

Mol	Chain	Non-H	H(model)	H(added)	Clashes	Symm-Clashes
1	A	3776	0	3655	76	1
2	B	61	0	52	1	0
3	C	24	0	22	3	0
4	D	28	0	25	0	0
5	A	11	0	10	1	0
6	A	42	0	39	0	0
All	All	3942	0	3803	77	1

The all-atom clashscore is defined as the number of clashes found per 1000 atoms (including hydrogen atoms). The all-atom clashscore for this structure is 10.

All (77) close contacts within the same asymmetric unit are listed below, sorted by their clash magnitude.

Atom-1	Atom-2	Interatomic distance (Å)	Clash overlap (Å)
1:A:63:SER:HB2	1:A:70:PRO:HB3	1.55	0.86
1:A:382:VAL:HG11	1:A:409:VAL:HG11	1.61	0.80
1:A:20:GLY:N	1:A:48:ASP:OD2	2.17	0.78
1:A:52:PRO:HG2	1:A:121:LEU:HB2	1.67	0.76
1:A:48:ASP:OD1	1:A:98:ARG:NH2	2.19	0.76
1:A:272:THR:HG22	1:A:282:GLU:HG3	1.71	0.73
1:A:436:SER:O	1:A:465:ARG:NH1	2.21	0.72
1:A:27:PRO:HG3	1:A:41:PRO:HG2	1.71	0.72
1:A:149:VAL:HG13	1:A:155:VAL:HG21	1.79	0.63
1:A:387:ASP:OD2	1:A:408:SER:HA	1.99	0.63
1:A:357:LEU:HD11	1:A:375:LEU:HB3	1.81	0.62
1:A:190:ARG:HD3	1:A:190:ARG:H	1.65	0.61
1:A:332:ASN:HB3	3:C:1:NAG:H82	1.83	0.59
1:A:352:ASN:N	1:A:352:ASN:OD1	2.35	0.59
1:A:163:ASP:OD2	1:A:188:ARG:NH2	2.33	0.59
1:A:162:PRO:HA	1:A:197:VAL:HG22	1.86	0.57
1:A:138:VAL:HG22	1:A:140:THR:H	1.70	0.56
1:A:329:PRO:HG2	1:A:403:THR:HB	1.88	0.56
1:A:461:VAL:HG12	1:A:474:LEU:HA	1.88	0.56
1:A:218:GLN:HG3	1:A:229:GLU:HG2	1.88	0.56
1:A:489:THR:HG22	1:A:498:SER:HB3	1.87	0.56
1:A:253:GLU:HA	1:A:295:VAL:HB	1.89	0.55
1:A:331:VAL:HG22	1:A:347:CYS:HA	1.89	0.55
1:A:306:LEU:HD13	1:A:315:ASN:HB3	1.90	0.52
1:A:210:ALA:HB3	1:A:236:VAL:HG11	1.91	0.52
1:A:351:SER:HB3	1:A:355:PRO:HG3	1.92	0.52
1:A:369:VAL:HB	1:A:375:LEU:HD13	1.92	0.52
1:A:415:ILE:HD13	1:A:499:LEU:HB3	1.90	0.51
1:A:41:PRO:HA	1:A:101:THR:HG22	1.92	0.51
1:A:42:CYS:H	1:A:101:THR:HG22	1.74	0.51
1:A:174:TRP:CD1	1:A:183:PRO:HB3	2.46	0.51
1:A:116:TYR:CD1	1:A:132:HIS:HB3	2.46	0.50
1:A:254:GLY:HA2	1:A:294:GLU:HA	1.94	0.49
1:A:170:PRO:HB3	1:A:221:PHE:CE2	2.48	0.49
1:A:358:THR:HG22	1:A:368:THR:HA	1.95	0.49
1:A:37:CYS:HA	1:A:105:SER:HA	1.95	0.49
1:A:149:VAL:HB	1:A:236:VAL:HA	1.94	0.49
1:A:357:LEU:HG	1:A:369:VAL:HG12	1.95	0.48
1:A:456:THR:OG1	1:A:457:GLU:N	2.46	0.48
1:A:332:ASN:HB3	3:C:1:NAG:N2	2.28	0.48

Continued on next page...

Continued from previous page...

Atom-1	Atom-2	Interatomic distance (Å)	Clash overlap (Å)
1:A:387:ASP:OD1	1:A:388:GLY:N	2.47	0.48
1:A:384:PRO:HA	1:A:411:PHE:CE1	2.49	0.47
1:A:416:LEU:HB2	1:A:433:VAL:HG23	1.95	0.47
1:A:326:PRO:HB3	1:A:351:SER:HB2	1.96	0.47
1:A:353:PRO:HG2	1:A:396:ASN:HD21	1.79	0.47
1:A:73:VAL:HG22	1:A:85:PHE:CE2	2.50	0.47
1:A:50:LEU:HD13	1:A:121:LEU:HD13	1.97	0.47
1:A:170:PRO:HB3	1:A:221:PHE:HE2	1.81	0.46
1:A:454:ASN:H	1:A:458:ARG:HD2	1.81	0.46
1:A:353:PRO:HG2	1:A:396:ASN:ND2	2.31	0.46
1:A:433:VAL:HG12	1:A:471:THR:HA	1.96	0.46
1:A:173:SER:HB2	1:A:218:GLN:HB3	1.98	0.45
1:A:464:GLU:OE1	1:A:465:ARG:N	2.49	0.45
1:A:337:ALA:HB1	1:A:341:GLU:OE2	2.16	0.45
1:A:359:ILE:HG12	1:A:367:ALA:HB3	1.98	0.45
1:A:50:LEU:HD12	1:A:50:LEU:O	2.16	0.45
1:A:393:VAL:HG22	1:A:395:GLU:HG3	1.99	0.44
1:A:245:MET:HB3	1:A:316:ARG:HH11	1.83	0.43
1:A:387:ASP:CG	1:A:408:SER:HA	2.38	0.43
1:A:22:TRP:N	5:A:601:MAN:O2	2.50	0.43
1:A:211:ASN:HB2	1:A:236:VAL:HG12	2.01	0.43
1:A:38:VAL:O	1:A:103:LEU:HA	2.18	0.43
2:B:3:BMA:H61	2:B:5:MAN:H2	1.44	0.43
1:A:297:PRO:HG3	1:A:352:ASN:HD21	1.84	0.43
1:A:118:ARG:NH1	1:A:126:GLN:HB2	2.34	0.42
1:A:382:VAL:HG13	1:A:386:ASP:HB2	2.01	0.42
1:A:172:LEU:HD13	1:A:200:SER:HB2	2.02	0.42
1:A:296:THR:OG1	1:A:299:GLU:HG2	2.19	0.42
1:A:58:VAL:HG11	1:A:75:LYS:HE2	2.02	0.42
1:A:489:THR:HG22	1:A:498:SER:CB	2.49	0.42
1:A:341:GLU:HG2	1:A:342:THR:H	1.85	0.41
1:A:160:MET:HG2	1:A:199:VAL:HG13	2.01	0.41
1:A:332:ASN:HB3	3:C:1:NAG:C8	2.50	0.41
1:A:454:ASN:N	1:A:458:ARG:HD2	2.36	0.40
1:A:156:GLU:O	1:A:156:GLU:HG3	2.21	0.40
1:A:218:GLN:HG3	1:A:229:GLU:CG	2.51	0.40
1:A:360:PHE:CE1	1:A:391:TRP:HB2	2.56	0.40

All (1) symmetry-related close contacts are listed below. The label for Atom-2 includes the symmetry operator and encoded unit-cell translations to be applied.

Atom-1	Atom-2	Interatomic distance (Å)	Clash overlap (Å)
1:A:75:LYS:NZ	1:A:445:GLU:OE2[6_644]	2.08	0.12

5.3 Torsion angles [i](#)

5.3.1 Protein backbone [i](#)

In the following table, the Percentiles column shows the percent Ramachandran outliers of the chain as a percentile score with respect to all X-ray entries followed by that with respect to entries of similar resolution.

The Analysed column shows the number of residues for which the backbone conformation was analysed, and the total number of residues.

Mol	Chain	Analysed	Favoured	Allowed	Outliers	Percentiles
1	A	485/500 (97%)	441 (91%)	43 (9%)	1 (0%)	47 81

All (1) Ramachandran outliers are listed below:

Mol	Chain	Res	Type
1	A	222	PRO

5.3.2 Protein sidechains [i](#)

In the following table, the Percentiles column shows the percent sidechain outliers of the chain as a percentile score with respect to all X-ray entries followed by that with respect to entries of similar resolution.

The Analysed column shows the number of residues for which the sidechain conformation was analysed, and the total number of residues.

Mol	Chain	Analysed	Rotameric	Outliers	Percentiles
1	A	422/431 (98%)	415 (98%)	7 (2%)	60 78

All (7) residues with a non-rotameric sidechain are listed below:

Mol	Chain	Res	Type
1	A	190	ARG
1	A	246	ASN
1	A	253	GLU
1	A	352	ASN
1	A	409	VAL

Continued on next page...

Continued from previous page...

Mol	Chain	Res	Type
1	A	432	CYS
1	A	491	ARG

Some sidechains can be flipped to improve hydrogen bonding and reduce clashes. There are no such sidechains identified.

5.3.3 RNA ⓘ

There are no RNA molecules in this entry.

5.4 Non-standard residues in protein, DNA, RNA chains ⓘ

There are no non-standard protein/DNA/RNA residues in this entry.

5.5 Carbohydrates ⓘ

9 monosaccharides are modelled in this entry.

In the following table, the Counts columns list the number of bonds (or angles) for which Mogul statistics could be retrieved, the number of bonds (or angles) that are observed in the model and the number of bonds (or angles) that are defined in the Chemical Component Dictionary. The Link column lists molecule types, if any, to which the group is linked. The Z score for a bond length (or angle) is the number of standard deviations the observed value is removed from the expected value. A bond length (or angle) with $|Z| > 2$ is considered an outlier worth inspection. RMSZ is the root-mean-square of all Z scores of the bond lengths (or angles).

Mol	Type	Chain	Res	Link	Bond lengths			Bond angles		
					Counts	RMSZ	# Z > 2	Counts	RMSZ	# Z > 2
2	NAG	B	1	1,2	14,14,15	0.69	1 (7%)	17,19,21	0.69	0
2	NAG	B	2	2	14,14,15	0.35	0	17,19,21	0.52	0
2	BMA	B	3	2	11,11,12	1.53	2 (18%)	15,15,17	1.57	3 (20%)
2	MAN	B	4	2	11,11,12	1.14	1 (9%)	15,15,17	1.00	1 (6%)
2	MAN	B	5	2	11,11,12	1.52	2 (18%)	15,15,17	1.53	1 (6%)
3	NAG	C	1	1,3	14,14,15	2.08	1 (7%)	17,19,21	1.90	1 (5%)
3	FUC	C	2	3	10,10,11	0.26	0	14,14,16	0.71	0
4	NAG	D	1	1,4	14,14,15	0.86	1 (7%)	17,19,21	1.10	2 (11%)
4	NAG	D	2	4	14,14,15	0.90	1 (7%)	17,19,21	0.76	1 (5%)

In the following table, the Chirals column lists the number of chiral outliers, the number of chiral centers analysed, the number of these observed in the model and the number defined in the

Chemical Component Dictionary. Similar counts are reported in the Torsion and Rings columns.
'-' means no outliers of that kind were identified.

Mol	Type	Chain	Res	Link	Chirals	Torsions	Rings
2	NAG	B	1	1,2	-	1/6/23/26	0/1/1/1
2	NAG	B	2	2	-	2/6/23/26	0/1/1/1
2	BMA	B	3	2	-	1/2/19/22	0/1/1/1
2	MAN	B	4	2	-	1/2/19/22	0/1/1/1
2	MAN	B	5	2	-	2/2/19/22	0/1/1/1
3	NAG	C	1	1,3	1/1/5/7	0/6/23/26	0/1/1/1
3	FUC	C	2	3	-	-	0/1/1/1
4	NAG	D	1	1,4	-	0/6/23/26	0/1/1/1
4	NAG	D	2	4	-	2/6/23/26	0/1/1/1

All (9) bond length outliers are listed below:

Mol	Chain	Res	Type	Atoms	Z	Observed(Å)	Ideal(Å)
3	C	1	NAG	C1-C2	7.71	1.63	1.52
2	B	5	MAN	C2-C3	3.59	1.57	1.52
2	B	3	BMA	C4-C3	3.01	1.60	1.52
2	B	3	BMA	C2-C3	2.75	1.56	1.52
4	D	1	NAG	O5-C1	2.69	1.48	1.43
4	D	2	NAG	C1-C2	2.64	1.56	1.52
2	B	1	NAG	O5-C1	-2.35	1.40	1.43
2	B	5	MAN	C1-C2	2.34	1.57	1.52
2	B	4	MAN	C4-C5	2.14	1.57	1.53

All (9) bond angle outliers are listed below:

Mol	Chain	Res	Type	Atoms	Z	Observed(°)	Ideal(°)
3	C	1	NAG	O5-C1-C2	-7.39	99.62	111.29
2	B	5	MAN	C1-O5-C5	4.66	118.51	112.19
2	B	3	BMA	C2-C3-C4	3.28	116.58	110.89
2	B	3	BMA	C3-C4-C5	3.17	115.89	110.24
2	B	3	BMA	C1-C2-C3	3.03	113.39	109.67
4	D	1	NAG	O4-C4-C5	2.91	116.51	109.30
4	D	1	NAG	C1-O5-C5	2.74	115.90	112.19
4	D	2	NAG	C1-O5-C5	2.65	115.78	112.19
2	B	4	MAN	C1-O5-C5	2.46	115.52	112.19

All (1) chirality outliers are listed below:

Mol	Chain	Res	Type	Atom
3	C	1	NAG	C1

All (9) torsion outliers are listed below:

Mol	Chain	Res	Type	Atoms
4	D	2	NAG	O5-C5-C6-O6
2	B	2	NAG	O5-C5-C6-O6
4	D	2	NAG	C4-C5-C6-O6
2	B	5	MAN	O5-C5-C6-O6
2	B	5	MAN	C4-C5-C6-O6
2	B	2	NAG	C4-C5-C6-O6
2	B	3	BMA	O5-C5-C6-O6
2	B	1	NAG	O5-C5-C6-O6
2	B	4	MAN	O5-C5-C6-O6

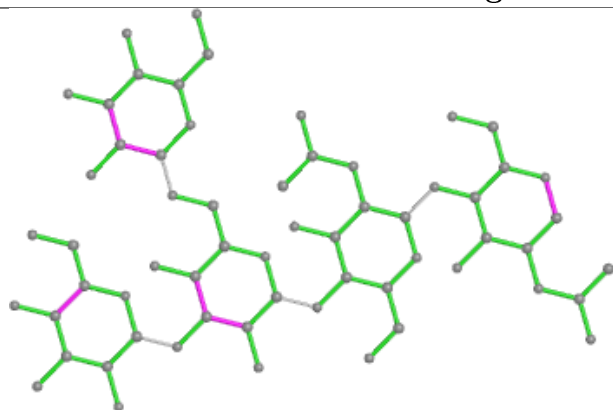
There are no ring outliers.

3 monomers are involved in 4 short contacts:

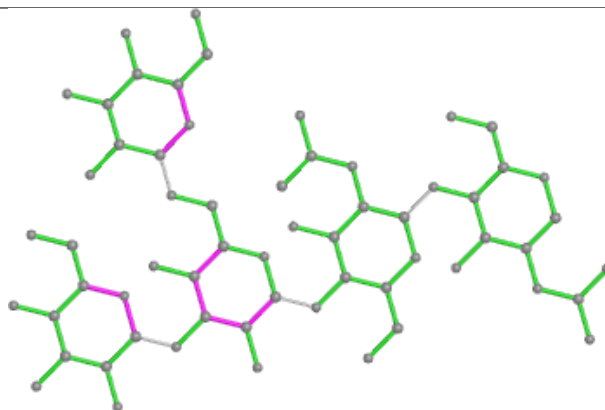
Mol	Chain	Res	Type	Clashes	Symm-Clashes
3	C	1	NAG	3	0
2	B	5	MAN	1	0
2	B	3	BMA	1	0

The following is a two-dimensional graphical depiction of Mogul quality analysis of bond lengths, bond angles, torsion angles, and ring geometry for oligosaccharide.

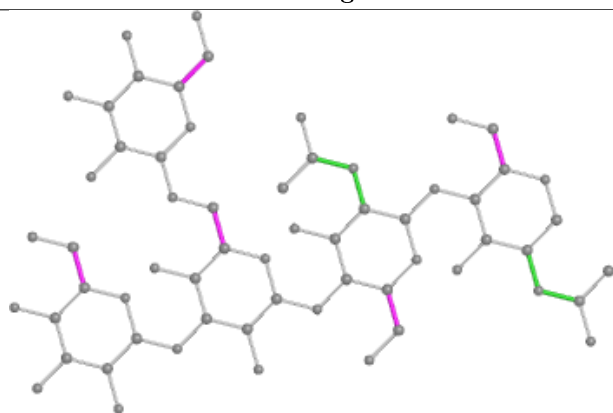
Oligosaccharide Chain B



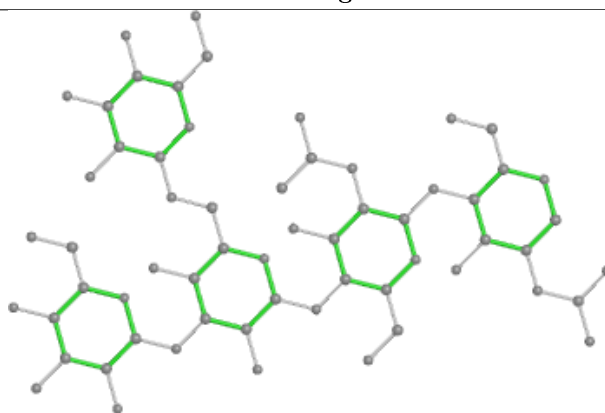
Bond lengths



Bond angles

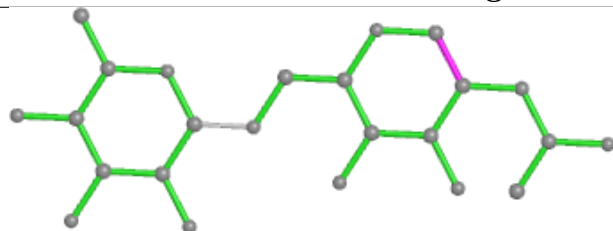


Torsions

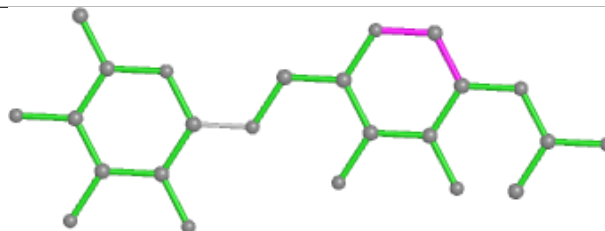


Rings

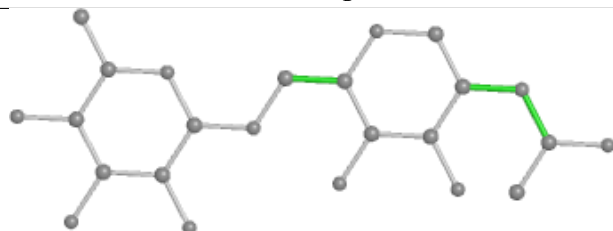
Oligosaccharide Chain C



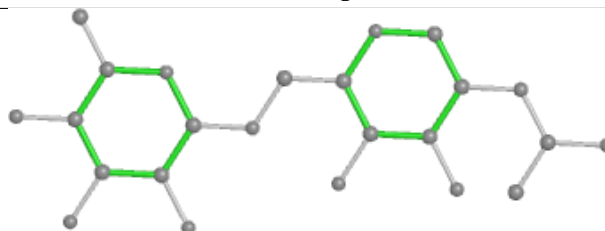
Bond lengths



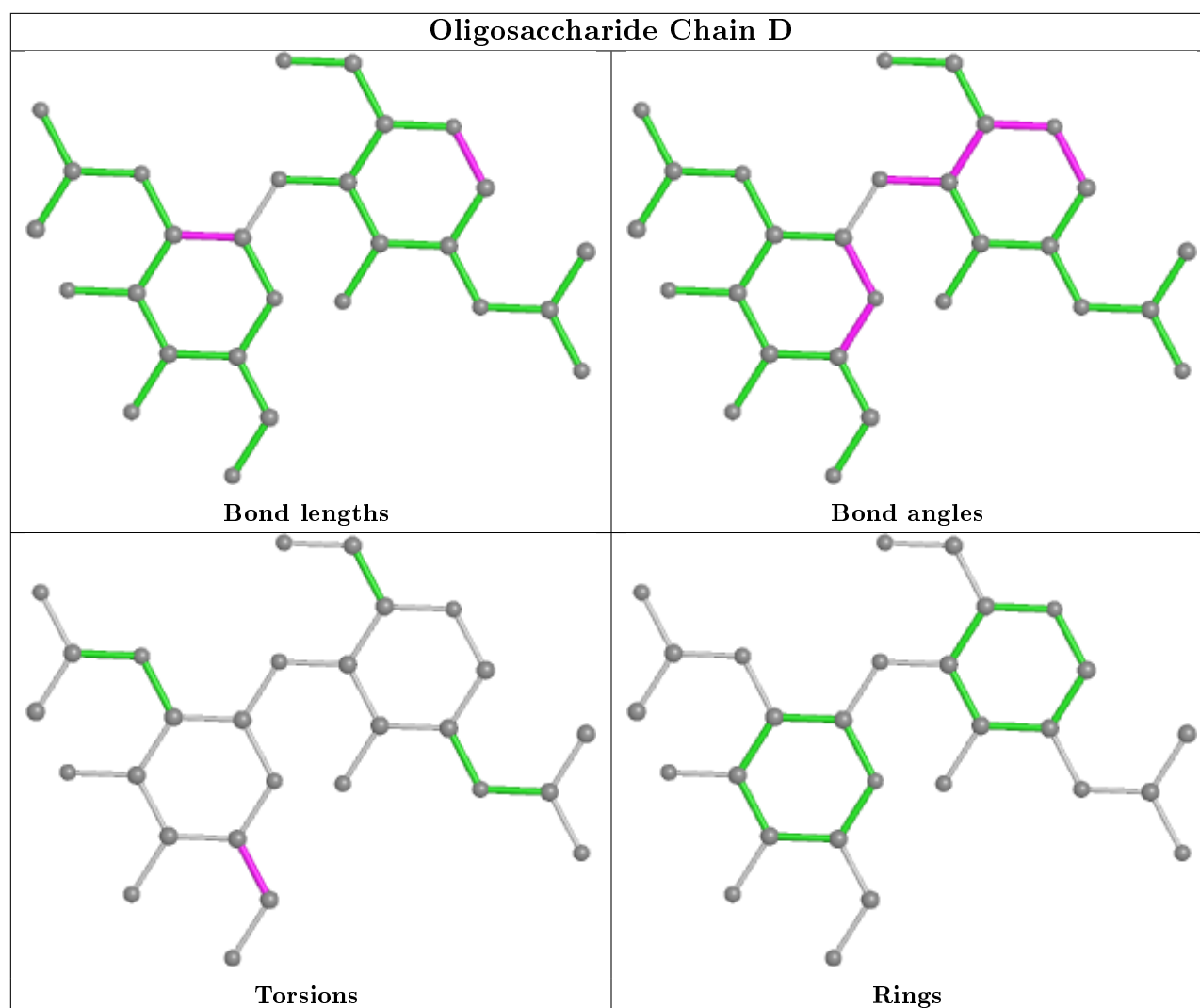
Bond angles



Torsions



Rings



5.6 Ligand geometry ⓘ

4 ligands are modelled in this entry.

In the following table, the Counts columns list the number of bonds (or angles) for which Mogul statistics could be retrieved, the number of bonds (or angles) that are observed in the model and the number of bonds (or angles) that are defined in the Chemical Component Dictionary. The Link column lists molecule types, if any, to which the group is linked. The Z score for a bond length (or angle) is the number of standard deviations the observed value is removed from the expected value. A bond length (or angle) with $|Z| > 2$ is considered an outlier worth inspection. RMSZ is the root-mean-square of all Z scores of the bond lengths (or angles).

Mol	Type	Chain	Res	Link	Bond lengths			Bond angles		
					Counts	RMSZ	# $ Z > 2$	Counts	RMSZ	# $ Z > 2$
6	NAG	A	608	1	14,14,15	0.79	1 (7%)	17,19,21	0.67	1 (5%)
5	MAN	A	601	1	11,11,12	1.62	2 (18%)	15,15,17	1.79	1 (6%)
6	NAG	A	607	1	14,14,15	0.76	1 (7%)	17,19,21	0.82	1 (5%)

Mol	Type	Chain	Res	Link	Bond lengths			Bond angles		
					Counts	RMSZ	# Z > 2	Counts	RMSZ	# Z > 2
6	NAG	A	609	1	14,14,15	0.53	0	17,19,21	0.46	0

In the following table, the Chirals column lists the number of chiral outliers, the number of chiral centers analysed, the number of these observed in the model and the number defined in the Chemical Component Dictionary. Similar counts are reported in the Torsion and Rings columns. '-' means no outliers of that kind were identified.

Mol	Type	Chain	Res	Link	Chirals	Torsions	Rings
6	NAG	A	608	1	-	2/6/23/26	0/1/1/1
5	MAN	A	601	1	-	1/2/19/22	0/1/1/1
6	NAG	A	607	1	-	2/6/23/26	0/1/1/1
6	NAG	A	609	1	-	2/6/23/26	0/1/1/1

All (4) bond length outliers are listed below:

Mol	Chain	Res	Type	Atoms	Z	Observed(Å)	Ideal(Å)
5	A	601	MAN	O5-C5	3.76	1.51	1.43
5	A	601	MAN	C4-C5	3.06	1.59	1.53
6	A	607	NAG	C1-C2	2.57	1.56	1.52
6	A	608	NAG	C1-C2	2.11	1.55	1.52

All (3) bond angle outliers are listed below:

Mol	Chain	Res	Type	Atoms	Z	Observed(°)	Ideal(°)
5	A	601	MAN	C1-O5-C5	5.73	119.96	112.19
6	A	607	NAG	C1-O5-C5	2.55	115.65	112.19
6	A	608	NAG	C1-O5-C5	2.22	115.20	112.19

There are no chirality outliers.

All (7) torsion outliers are listed below:

Mol	Chain	Res	Type	Atoms
6	A	609	NAG	O5-C5-C6-O6
6	A	609	NAG	C4-C5-C6-O6
6	A	608	NAG	C4-C5-C6-O6
6	A	608	NAG	O5-C5-C6-O6
6	A	607	NAG	C4-C5-C6-O6
6	A	607	NAG	O5-C5-C6-O6
5	A	601	MAN	O5-C5-C6-O6

There are no ring outliers.

1 monomer is involved in 1 short contact:

Mol	Chain	Res	Type	Clashes	Symm-Clashes
5	A	601	MAN	1	0

5.7 Other polymers [i](#)

There are no such residues in this entry.

5.8 Polymer linkage issues [i](#)

There are no chain breaks in this entry.

6 Fit of model and data [i](#)

6.1 Protein, DNA and RNA chains [i](#)

Unable to reproduce the depositors R factor - this section is therefore empty.

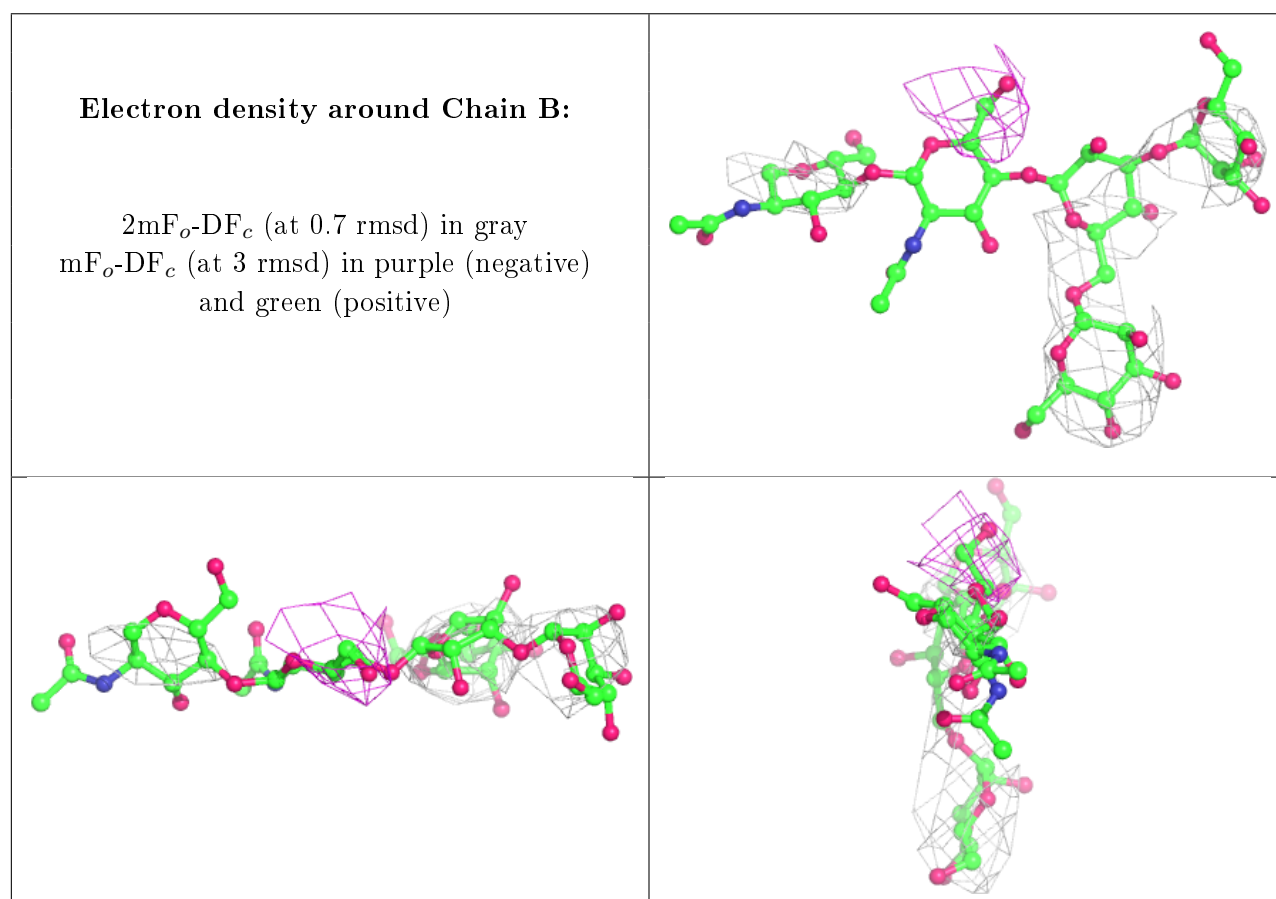
6.2 Non-standard residues in protein, DNA, RNA chains [i](#)

Unable to reproduce the depositors R factor - this section is therefore empty.

6.3 Carbohydrates [i](#)

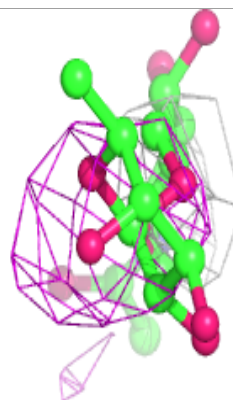
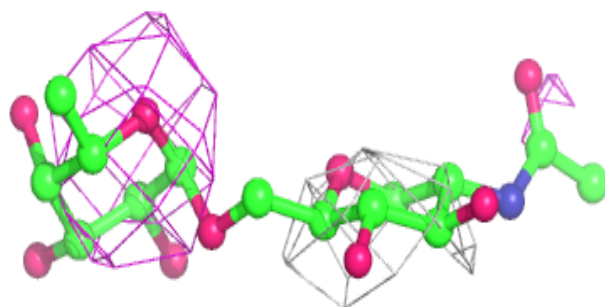
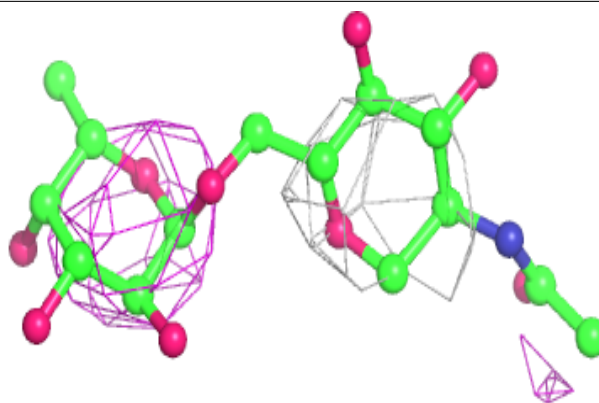
Unable to reproduce the depositors R factor - this section is therefore empty.

The following is a graphical depiction of the model fit to experimental electron density for oligosaccharide. Each fit is shown from different orientation to approximate a three-dimensional view.

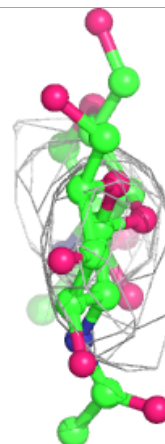
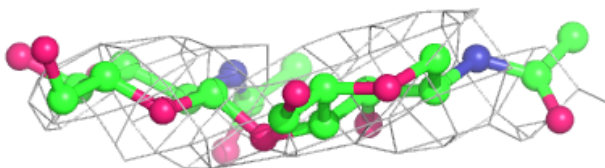
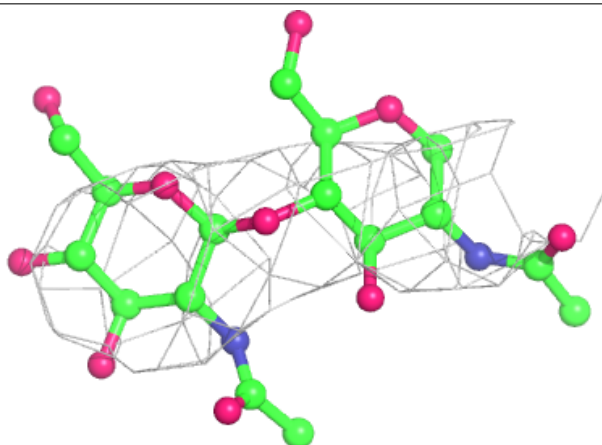


Electron density around Chain C:

$2mF_o-DF_c$ (at 0.7 rmsd) in gray
 mF_o-DF_c (at 3 rmsd) in purple (negative)
and green (positive)

**Electron density around Chain D:**

$2mF_o-DF_c$ (at 0.7 rmsd) in gray
 mF_o-DF_c (at 3 rmsd) in purple (negative)
and green (positive)



6.4 Ligands

Unable to reproduce the depositors R factor - this section is therefore empty.

6.5 Other polymers

Unable to reproduce the depositors R factor - this section is therefore empty.