



# Full wwPDB X-ray Structure Validation Report ⓘ

Feb 16, 2021 – 04:03 PM GMT

PDB ID : 5LGA  
Title : Structural analysis and biological activities of BXL0124, a Gemini analog of Vitamin D  
Authors : Belorusova, A.Y.; Rochel, N.  
Deposited on : 2016-07-06  
Resolution : 2.50 Å(reported)

This is a Full wwPDB X-ray Structure Validation Report for a publicly released PDB entry.

We welcome your comments at [validation@mail.wwpdb.org](mailto:validation@mail.wwpdb.org)

A user guide is available at

<https://www.wwpdb.org/validation/2017/XrayValidationReportHelp>

with specific help available everywhere you see the ⓘ symbol.

---

The following versions of software and data (see [references ⓘ](#)) were used in the production of this report:

MolProbity : 4.02b-467  
Mogul : 1.8.5 (274361), CSD as541be (2020)  
Xtriage (Phenix) : 1.13  
EDS : 2.17.1.dev1  
buster-report : 1.1.7 (2018)  
Percentile statistics : 20191225.v01 (using entries in the PDB archive December 25th 2019)  
Refmac : 5.8.0158  
CCP4 : 7.0.044 (Gargrove)  
Ideal geometry (proteins) : Engh & Huber (2001)  
Ideal geometry (DNA, RNA) : Parkinson et al. (1996)  
Validation Pipeline (wwPDB-VP) : 2.17.1.dev1

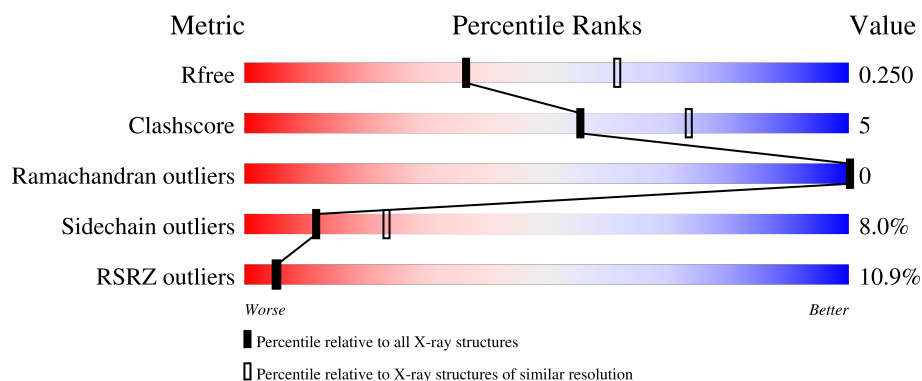
# 1 Overall quality at a glance

The following experimental techniques were used to determine the structure:

*X-RAY DIFFRACTION*

The reported resolution of this entry is 2.50 Å.

Percentile scores (ranging between 0-100) for global validation metrics of the entry are shown in the following graphic. The table shows the number of entries on which the scores are based.



Metric	Whole archive (#Entries)	Similar resolution (#Entries, resolution range(Å))
$R_{free}$	130704	4661 (2.50-2.50)
Clashscore	141614	5346 (2.50-2.50)
Ramachandran outliers	138981	5231 (2.50-2.50)
Sidechain outliers	138945	5233 (2.50-2.50)
RSRZ outliers	127900	4559 (2.50-2.50)

The table below summarises the geometric issues observed across the polymeric chains and their fit to the electron density. The red, orange, yellow and green segments of the lower bar indicate the fraction of residues that contain outliers for  $\geq 3$ , 2, 1 and 0 types of geometric quality criteria respectively. A grey segment represents the fraction of residues that are not modelled. The numeric value for each fraction is indicated below the corresponding segment, with a dot representing fractions  $\leq 5\%$ . The upper red bar (where present) indicates the fraction of residues that have poor fit to the electron density. The numeric value is given above the bar.

Mol	Chain	Length	Quality of chain
1	A	300	<div> <div>9%</div> <div>65%</div> <div>13%</div> <div>•</div> <div>21%</div> </div>
2	B	13	<div> <div>62%</div> <div>15%</div> <div>23%</div> </div>

## 2 Entry composition

There are 4 unique types of molecules in this entry. The entry contains 2090 atoms, of which 0 are hydrogens and 0 are deuteriums.

In the tables below, the ZeroOcc column contains the number of atoms modelled with zero occupancy, the AltConf column contains the number of residues with at least one atom in alternate conformation and the Trace column contains the number of residues modelled with at most 2 atoms.

- Molecule 1 is a protein called Vitamin D3 receptor A.

Mol	Chain	Residues	Atoms					ZeroOcc	AltConf	Trace
1	A	238	Total	C	N	O	S	58	0	0
			1909	1217	328	351	13			

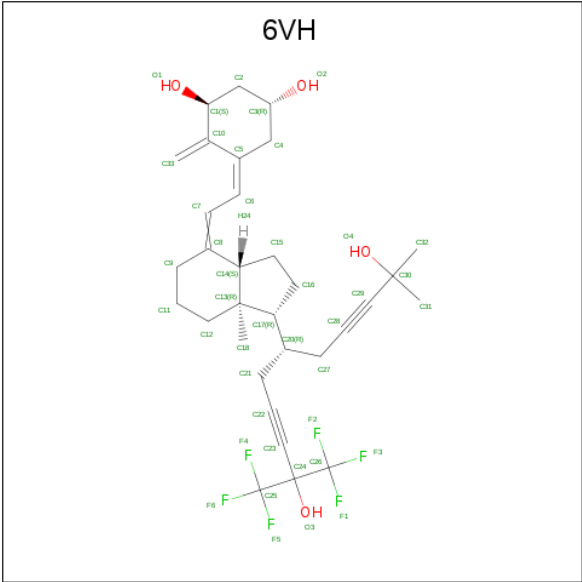
There are 2 discrepancies between the modelled and reference sequences:

Chain	Residue	Modelled	Actual	Comment	Reference
A	154	HIS	-	expression tag	UNP Q9PTN2
A	155	MET	-	expression tag	UNP Q9PTN2

- Molecule 2 is a protein called SRC-2.

Mol	Chain	Residues	Atoms				ZeroOcc	AltConf	Trace
2	B	10	Total	C	N	O	0	0	0
			85	55	19	11			

- Molecule 3 is (1 {R},3 {S},5 {Z})-5-[2-[(1 {R},3 {a} {S},7 {a} {R})-7 {a}-methyl-1-[(6 {R})-1,1,1-tris(fluoranyl)-10-methyl-2,10-bis(oxidanyl)-2-(trifluoromethyl)undeca-3,8-diyn-6-yl]-2,3,3 {a},5,6,7-hexahydro-1 {H}-inden-4-ylidene]ethylidene]-4-methylidene-cyclohexane-1,3-diol (three-letter code: 6VH) (formula: C<sub>32</sub>H<sub>40</sub>F<sub>6</sub>O<sub>4</sub>).



Mol	Chain	Residues	Atoms				ZeroOcc	AltConf
3	A	1	Total	C	F	O	0	0
			42	32	6	4		

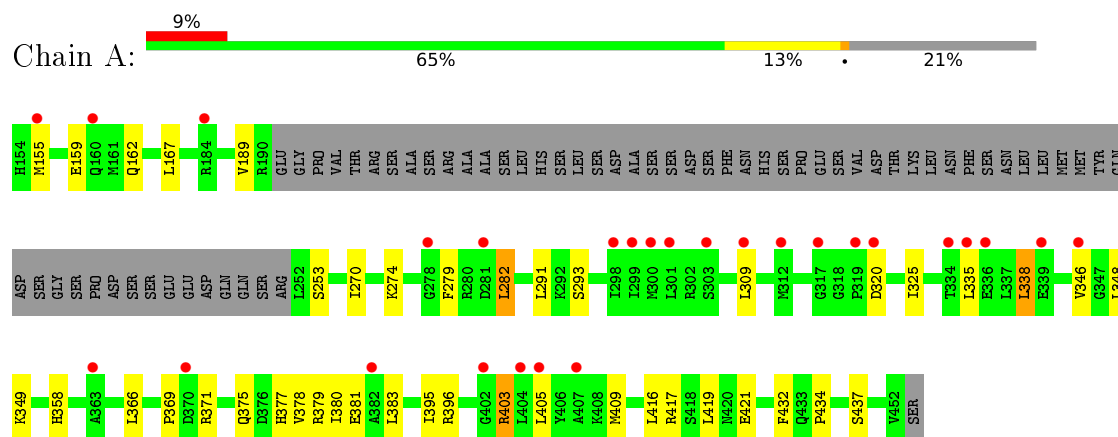
- Molecule 4 is water.

Mol	Chain	Residues	Atoms		ZeroOcc	AltConf
4	A	50	Total	O	0	0
			50	50		
4	B	4	Total	O	0	0
			4	4		

### 3 Residue-property plots [i](#)

These plots are drawn for all protein, RNA, DNA and oligosaccharide chains in the entry. The first graphic for a chain summarises the proportions of the various outlier classes displayed in the second graphic. The second graphic shows the sequence view annotated by issues in geometry and electron density. Residues are color-coded according to the number of geometric quality criteria for which they contain at least one outlier: green = 0, yellow = 1, orange = 2 and red = 3 or more. A red dot above a residue indicates a poor fit to the electron density ( $RSRZ > 2$ ). Stretches of 2 or more consecutive residues without any outlier are shown as a green connector. Residues present in the sample, but not in the model, are shown in grey.

- Molecule 1: Vitamin D3 receptor A



## 4 Data and refinement statistics

Property	Value	Source
Space group	P 65 2 2	Depositor
Cell constants a, b, c, $\alpha$ , $\beta$ , $\gamma$	65.86 Å 65.86 Å 263.83 Å 90.00° 90.00° 120.00°	Depositor
Resolution (Å)	24.80 – 2.50 24.80 – 2.50	Depositor EDS
% Data completeness (in resolution range)	95.4 (24.80-2.50) 95.4 (24.80-2.50)	Depositor EDS
$R_{merge}$	0.05	Depositor
$R_{sym}$	(Not available)	Depositor
$\langle I/\sigma(I) \rangle$ <sup>1</sup>	4.78 (at 2.50 Å)	Xtriage
Refinement program	BUSTER 2.10.2	Depositor
R, $R_{free}$	0.199 , 0.241 0.208 , 0.250	Depositor DCC
$R_{free}$ test set	645 reflections (5.37%)	wwPDB-VP
Wilson B-factor (Å <sup>2</sup> )	67.1	Xtriage
Anisotropy	0.686	Xtriage
Bulk solvent $k_{sol}$ (e/Å <sup>3</sup> ), $B_{sol}$ (Å <sup>2</sup> )	0.34 , 95.1	EDS
L-test for twinning <sup>2</sup>	$\langle  L  \rangle = 0.50$ , $\langle L^2 \rangle = 0.33$	Xtriage
Estimated twinning fraction	No twinning to report.	Xtriage
$F_o, F_c$ correlation	0.96	EDS
Total number of atoms	2090	wwPDB-VP
Average B, all atoms (Å <sup>2</sup> )	103.0	wwPDB-VP

Xtriage's analysis on translational NCS is as follows: *The largest off-origin peak in the Patterson function is 5.14% of the height of the origin peak. No significant pseudotranslation is detected.*

<sup>1</sup>Intensities estimated from amplitudes.

<sup>2</sup>Theoretical values of  $\langle |L| \rangle$ ,  $\langle L^2 \rangle$  for acentric reflections are 0.5, 0.333 respectively for untwinned datasets, and 0.375, 0.2 for perfectly twinned datasets.

## 5 Model quality

### 5.1 Standard geometry

Bond lengths and bond angles in the following residue types are not validated in this section: 6VH

The Z score for a bond length (or angle) is the number of standard deviations the observed value is removed from the expected value. A bond length (or angle) with  $|Z| > 5$  is considered an outlier worth inspection. RMSZ is the root-mean-square of all Z scores of the bond lengths (or angles).

Mol	Chain	Bond lengths		Bond angles	
		RMSZ	# Z  >5	RMSZ	# Z  >5
1	A	0.50	0/1947	0.66	0/2627
2	B	0.51	0/86	0.62	0/113
All	All	0.50	0/2033	0.66	0/2740

There are no bond length outliers.

There are no bond angle outliers.

There are no chirality outliers.

There are no planarity outliers.

### 5.2 Too-close contacts

In the following table, the Non-H and H(model) columns list the number of non-hydrogen atoms and hydrogen atoms in the chain respectively. The H(added) column lists the number of hydrogen atoms added and optimized by MolProbity. The Clashes column lists the number of clashes within the asymmetric unit, whereas Symm-Clashes lists symmetry-related clashes.

Mol	Chain	Non-H	H(model)	H(added)	Clashes	Symm-Clashes
1	A	1909	0	1928	20	0
2	B	85	0	92	1	0
3	A	42	0	0	0	0
4	A	50	0	0	1	0
4	B	4	0	0	0	0
All	All	2090	0	2020	20	0

The all-atom clashscore is defined as the number of clashes found per 1000 atoms (including hydrogen atoms). The all-atom clashscore for this structure is 5.

All (20) close contacts within the same asymmetric unit are listed below, sorted by their clash magnitude.

Atom-1	Atom-2	Interatomic distance (Å)	Clash overlap (Å)
1:A:293:SER:CB	1:A:371:ARG:HG2	2.24	0.66
1:A:293:SER:HB3	1:A:371:ARG:HG2	1.86	0.57
1:A:325:ILE:HG23	1:A:338:LEU:HD22	1.89	0.54
1:A:274:LYS:HD3	2:B:694:LEU:HA	1.91	0.52
1:A:416:LEU:HA	1:A:419:LEU:HD12	1.93	0.51
1:A:417:ARG:O	1:A:421:GLU:HG2	2.13	0.48
1:A:358:HIS:HE1	4:A:601:HOH:O	1.95	0.48
1:A:369:PRO:HA	1:A:380:ILE:HD11	1.96	0.47
1:A:432:PHE:O	1:A:434:PRO:HD3	2.15	0.47
1:A:279:PHE:O	1:A:282:LEU:HB2	2.16	0.46
1:A:279:PHE:HA	1:A:282:LEU:HD22	1.98	0.45
1:A:189:VAL:HB	1:A:253:SER:HB2	1.98	0.45
1:A:403:ARG:H	1:A:403:ARG:HD2	1.82	0.44
1:A:159:GLU:HA	1:A:162:GLN:HG2	1.98	0.44
1:A:309:LEU:HD22	1:A:346:VAL:HG23	2.00	0.43
1:A:270:ILE:HG12	1:A:291:LEU:HD13	2.01	0.43
1:A:405:LEU:HG	1:A:409:MET:HE2	2.01	0.42
1:A:395:ILE:HD11	1:A:409:MET:HE1	2.02	0.42
1:A:270:ILE:O	1:A:274:LYS:HG3	2.21	0.41
1:A:309:LEU:HD21	1:A:349:LYS:HB3	2.03	0.41

There are no symmetry-related clashes.

## 5.3 Torsion angles [i](#)

### 5.3.1 Protein backbone [i](#)

In the following table, the Percentiles column shows the percent Ramachandran outliers of the chain as a percentile score with respect to all X-ray entries followed by that with respect to entries of similar resolution.

The Analysed column shows the number of residues for which the backbone conformation was analysed, and the total number of residues.

Mol	Chain	Analysed	Favoured	Allowed	Outliers	Percentiles	
1	A	234/300 (78%)	226 (97%)	8 (3%)	0	100	100
2	B	8/13 (62%)	7 (88%)	1 (12%)	0	100	100
All	All	242/313 (77%)	233 (96%)	9 (4%)	0	100	100

There are no Ramachandran outliers to report.



### 5.3.2 Protein sidechains ⓘ

In the following table, the Percentiles column shows the percent sidechain outliers of the chain as a percentile score with respect to all X-ray entries followed by that with respect to entries of similar resolution.

The Analysed column shows the number of residues for which the sidechain conformation was analysed, and the total number of residues.

Mol	Chain	Analysed	Rotameric	Outliers	Percentiles	
1	A	216/272 (79%)	199 (92%)	17 (8%)	12	24
2	B	9/13 (69%)	8 (89%)	1 (11%)	6	11
All	All	225/285 (79%)	207 (92%)	18 (8%)	12	23

All (18) residues with a non-rotameric sidechain are listed below:

Mol	Chain	Res	Type
1	A	155	MET
1	A	167	LEU
1	A	282	LEU
1	A	320	ASP
1	A	335	LEU
1	A	338	LEU
1	A	348	LEU
1	A	366	LEU
1	A	375	GLN
1	A	377	HIS
1	A	378	VAL
1	A	379	ARG
1	A	381	GLU
1	A	383	LEU
1	A	396	ARG
1	A	403	ARG
1	A	437	SER
2	B	691	HIS

Sometimes sidechains can be flipped to improve hydrogen bonding and reduce clashes. All (4) such sidechains are listed below:

Mol	Chain	Res	Type
1	A	160	GLN
1	A	165	ASN
1	A	398	GLN
1	A	399	HIS

### 5.3.3 RNA [i](#)

There are no RNA molecules in this entry.

## 5.4 Non-standard residues in protein, DNA, RNA chains [i](#)

There are no non-standard protein/DNA/RNA residues in this entry.

## 5.5 Carbohydrates [i](#)

There are no monosaccharides in this entry.

## 5.6 Ligand geometry [i](#)

1 ligand is modelled in this entry.

In the following table, the Counts columns list the number of bonds (or angles) for which Mogul statistics could be retrieved, the number of bonds (or angles) that are observed in the model and the number of bonds (or angles) that are defined in the Chemical Component Dictionary. The Link column lists molecule types, if any, to which the group is linked. The Z score for a bond length (or angle) is the number of standard deviations the observed value is removed from the expected value. A bond length (or angle) with  $|Z| > 2$  is considered an outlier worth inspection. RMSZ is the root-mean-square of all Z scores of the bond lengths (or angles).

Mol	Type	Chain	Res	Link	Bond lengths			Bond angles		
					Counts	RMSZ	# Z  > 2	Counts	RMSZ	# Z  > 2
3	6VH	A	501	-	39,44,44	3.76	4 (10%)	48,69,69	2.54	19 (39%)

In the following table, the Chirals column lists the number of chiral outliers, the number of chiral centers analysed, the number of these observed in the model and the number defined in the Chemical Component Dictionary. Similar counts are reported in the Torsion and Rings columns. '-' means no outliers of that kind were identified.

Mol	Type	Chain	Res	Link	Chirals	Torsions	Rings
3	6VH	A	501	-	-	11/36/85/85	0/3/3/3

All (4) bond length outliers are listed below:

Mol	Chain	Res	Type	Atoms	Z	Observed(Å)	Ideal(Å)
3	A	501	6VH	C28-C29	20.89	1.53	1.18
3	A	501	6VH	C27-C28	6.71	1.54	1.47
3	A	501	6VH	C30-C29	4.80	1.55	1.48

*Continued on next page...*

*Continued from previous page...*

Mol	Chain	Res	Type	Atoms	Z	Observed(Å)	Ideal(Å)
3	A	501	6VH	C1-C10	3.61	1.55	1.51

All (19) bond angle outliers are listed below:

Mol	Chain	Res	Type	Atoms	Z	Observed(°)	Ideal(°)
3	A	501	6VH	C16-C17-C20	10.76	120.34	112.04
3	A	501	6VH	C18-C13-C14	4.31	117.23	110.24
3	A	501	6VH	C14-C8-C7	-3.90	117.06	123.55
3	A	501	6VH	C6-C5-C10	-3.80	117.60	124.57
3	A	501	6VH	C20-C27-C28	3.66	118.62	113.47
3	A	501	6VH	C9-C8-C14	-3.33	105.17	113.15
3	A	501	6VH	C32-C30-C29	3.03	114.72	109.92
3	A	501	6VH	C2-C1-C10	2.97	114.89	110.36
3	A	501	6VH	C3-C2-C1	-2.86	108.11	111.12
3	A	501	6VH	C4-C5-C6	-2.85	116.01	120.85
3	A	501	6VH	C15-C14-C13	-2.79	101.72	104.21
3	A	501	6VH	C12-C13-C17	-2.59	112.70	116.57
3	A	501	6VH	C9-C8-C7	-2.53	122.39	125.26
3	A	501	6VH	C2-C3-C4	-2.37	106.10	110.12
3	A	501	6VH	C11-C9-C8	2.37	117.26	111.83
3	A	501	6VH	C13-C14-C8	2.35	116.95	113.13
3	A	501	6VH	C16-C15-C14	-2.26	101.58	105.30
3	A	501	6VH	C26-C24-C25	-2.17	108.23	110.15
3	A	501	6VH	C18-C13-C17	2.17	115.76	111.71

There are no chirality outliers.

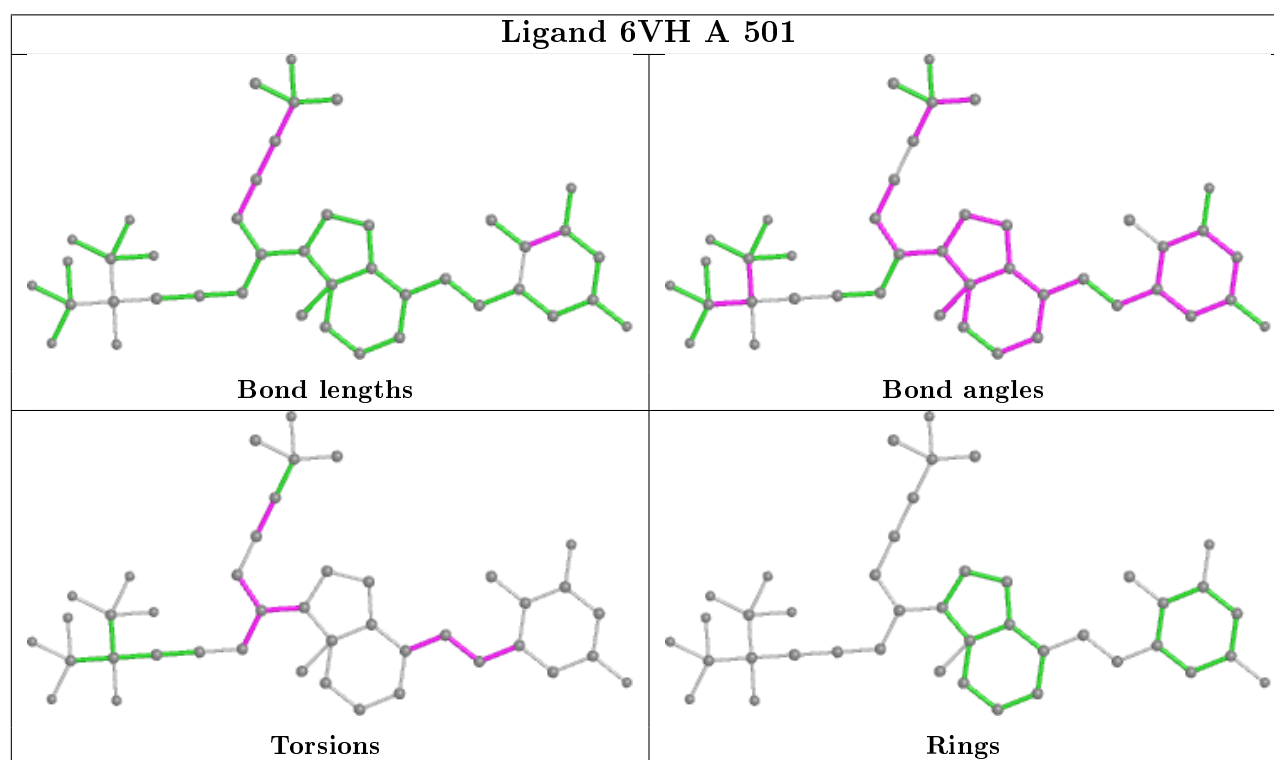
All (11) torsion outliers are listed below:

Mol	Chain	Res	Type	Atoms
3	A	501	6VH	C10-C5-C6-C7
3	A	501	6VH	C6-C7-C8-C9
3	A	501	6VH	C17-C20-C27-C28
3	A	501	6VH	C21-C20-C27-C28
3	A	501	6VH	C16-C17-C20-C27
3	A	501	6VH	C13-C17-C20-C27
3	A	501	6VH	C13-C17-C20-C21
3	A	501	6VH	C16-C17-C20-C21
3	A	501	6VH	C5-C6-C7-C8
3	A	501	6VH	C17-C20-C21-C22
3	A	501	6VH	C27-C28-C29-C30

There are no ring outliers.

No monomer is involved in short contacts.

The following is a two-dimensional graphical depiction of Mogul quality analysis of bond lengths, bond angles, torsion angles, and ring geometry for all instances of the Ligand of Interest. In addition, ligands with molecular weight > 250 and outliers as shown on the validation Tables will also be included. For torsion angles, if less than 5% of the Mogul distribution of torsion angles is within 10 degrees of the torsion angle in question, then that torsion angle is considered an outlier. Any bond that is central to one or more torsion angles identified as an outlier by Mogul will be highlighted in the graph. For rings, the root-mean-square deviation (RMSD) between the ring in question and similar rings identified by Mogul is calculated over all ring torsion angles. If the average RMSD is greater than 60 degrees and the minimal RMSD between the ring in question and any Mogul-identified rings is also greater than 60 degrees, then that ring is considered an outlier. The outliers are highlighted in purple. The color gray indicates Mogul did not find sufficient equivalents in the CSD to analyse the geometry.



## 5.7 Other polymers [i](#)

There are no such residues in this entry.







## 5.8 Polymer linkage issues [i](#)

There are no chain breaks in this entry.

## 6 Fit of model and data

### 6.1 Protein, DNA and RNA chains

In the following table, the column labelled ‘#RSRZ> 2’ contains the number (and percentage) of RSRZ outliers, followed by percent RSRZ outliers for the chain as percentile scores relative to all X-ray entries and entries of similar resolution. The OWAB column contains the minimum, median, 95<sup>th</sup> percentile and maximum values of the occupancy-weighted average B-factor per residue. The column labelled ‘Q< 0.9’ lists the number of (and percentage) of residues with an average occupancy less than 0.9.

Mol	Chain	Analysed	<RSRZ>	#RSRZ>2	OWAB(Å <sup>2</sup> )	Q<0.9
1	A	238/300 (79%)	0.48	27 (11%)  	62, 103, 142, 176	21 (8%)
2	B	10/13 (76%)	-0.20	0  	71, 89, 100, 131	0
All	All	248/313 (79%)	0.45	27 (10%)  	62, 101, 142, 176	21 (8%)

All (27) RSRZ outliers are listed below:

Mol	Chain	Res	Type	RSRZ
1	A	335	LEU	6.6
1	A	336	GLU	5.1
1	A	309	LEU	4.5
1	A	334	THR	4.2
1	A	407	ALA	4.1
1	A	320	ASP	4.0
1	A	363	ALA	4.0
1	A	278	GLY	3.7
1	A	404	LEU	3.4
1	A	299	ILE	3.3
1	A	300	MET	3.1
1	A	370	ASP	3.0
1	A	312	MET	2.9
1	A	317	GLY	2.9
1	A	160	GLN	2.8
1	A	298	ILE	2.6
1	A	402	GLY	2.6
1	A	155	MET	2.5
1	A	382	ALA	2.5
1	A	319	PRO	2.4
1	A	184	ARG	2.4
1	A	405	LEU	2.2
1	A	301	LEU	2.2
1	A	303	SER	2.1

*Continued on next page...*

*Continued from previous page...*

Mol	Chain	Res	Type	RSRZ
1	A	281	ASP	2.1
1	A	339	GLU	2.0
1	A	346	VAL	2.0

## 6.2 Non-standard residues in protein, DNA, RNA chains [i](#)

There are no non-standard protein/DNA/RNA residues in this entry.

## 6.3 Carbohydrates [i](#)

There are no monosaccharides in this entry.

## 6.4 Ligands [i](#)

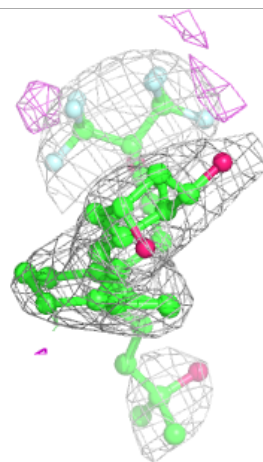
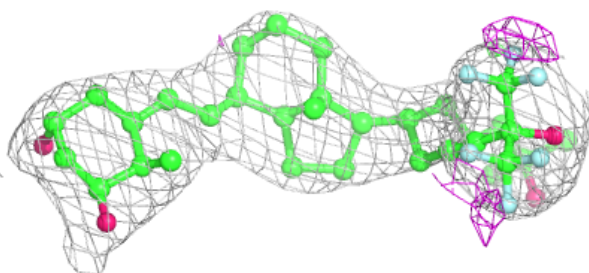
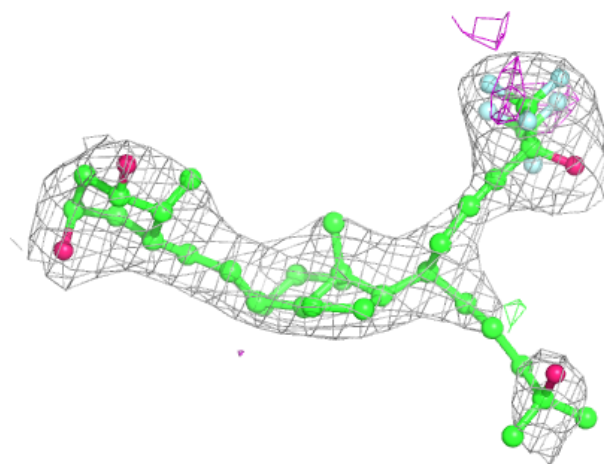
In the following table, the Atoms column lists the number of modelled atoms in the group and the number defined in the chemical component dictionary. The B-factors column lists the minimum, median, 95<sup>th</sup> percentile and maximum values of B factors of atoms in the group. The column labelled 'Q< 0.9' lists the number of atoms with occupancy less than 0.9.

Mol	Type	Chain	Res	Atoms	RSCC	RSR	B-factors( $\text{\AA}^2$ )	Q<0.9
3	6VH	A	501	42/42	0.93	0.27	65,79,111,117	0

The following is a graphical depiction of the model fit to experimental electron density of all instances of the Ligand of Interest. In addition, ligands with molecular weight > 250 and outliers as shown on the geometry validation Tables will also be included. Each fit is shown from different orientation to approximate a three-dimensional view.

**Electron density around 6VH A 501:**

$2mF_o-DF_c$  (at 0.7 rmsd) in gray  
 $mF_o-DF_c$  (at 3 rmsd) in purple (negative)  
and green (positive)



## 6.5 Other polymers [i](#)

There are no such residues in this entry.