



Full wwPDB EM Validation Report ⓘ

Nov 19, 2022 – 08:25 AM EST

PDB ID : 7LHL
EMDB ID : EMD-23345
Title : cryo-EM structure of Mycobacterium smegmatis Lhr helicase C-terminal domain
Authors : Wang, J.; Warren, G.M.; Shuman, S.; Patel, D.J.
Deposited on : 2021-01-25
Resolution : 3.60 Å(reported)

This is a Full wwPDB EM Validation Report for a publicly released PDB entry.

We welcome your comments at validation@mail.wwpdb.org

A user guide is available at

<https://www.wwpdb.org/validation/2017/EMValidationReportHelp>
with specific help available everywhere you see the ⓘ symbol.

The types of validation reports are described at

<http://www.wwpdb.org/validation/2017/FAQs#types>.

The following versions of software and data (see [references ⓘ](#)) were used in the production of this report:

EMDB validation analysis : 0.0.1.dev43
MolProbity : 4.02b-467
Percentile statistics : 20191225.v01 (using entries in the PDB archive December 25th 2019)
MapQ : 1.9.9
Ideal geometry (proteins) : Engh & Huber (2001)
Ideal geometry (DNA, RNA) : Parkinson et al. (1996)
Validation Pipeline (wwPDB-VP) : 2.31.2

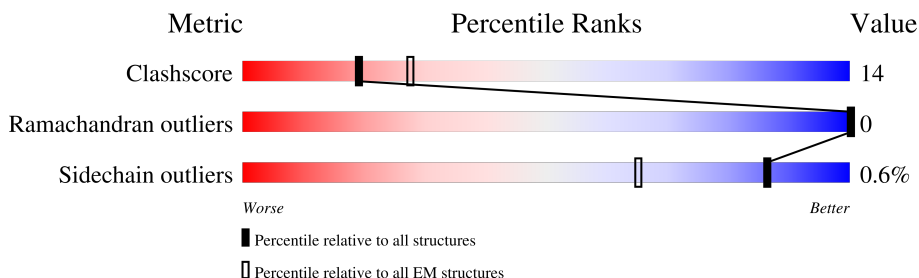
1 Overall quality at a glance

The following experimental techniques were used to determine the structure:

ELECTRON MICROSCOPY

The reported resolution of this entry is 3.60 Å.

Percentile scores (ranging between 0-100) for global validation metrics of the entry are shown in the following graphic. The table shows the number of entries on which the scores are based.



Metric	Whole archive (#Entries)	EM structures (#Entries)
Clashscore	158937	4297
Ramachandran outliers	154571	4023
Sidechain outliers	154315	3826

The table below summarises the geometric issues observed across the polymeric chains and their fit to the map. The red, orange, yellow and green segments of the bar indicate the fraction of residues that contain outliers for ≥ 3 , 2, 1 and 0 types of geometric quality criteria respectively. A grey segment represents the fraction of residues that are not modelled. The numeric value for each fraction is indicated below the corresponding segment, with a dot representing fractions $\leq 5\%$. The upper red bar (where present) indicates the fraction of residues that have poor fit to the EM map (all-atom inclusion $< 40\%$). The numeric value is given above the bar.

Mol	Chain	Length	Quality of chain
1	A	1508	 27% 10% 62%
1	B	1508	 27% 11% 62%
1	C	1508	 26% 11% 62%
1	D	1508	 28% 10% 62%

2 Entry composition

There is only 1 type of molecule in this entry. The entry contains 17075 atoms, of which 0 are hydrogens and 0 are deuteriums.

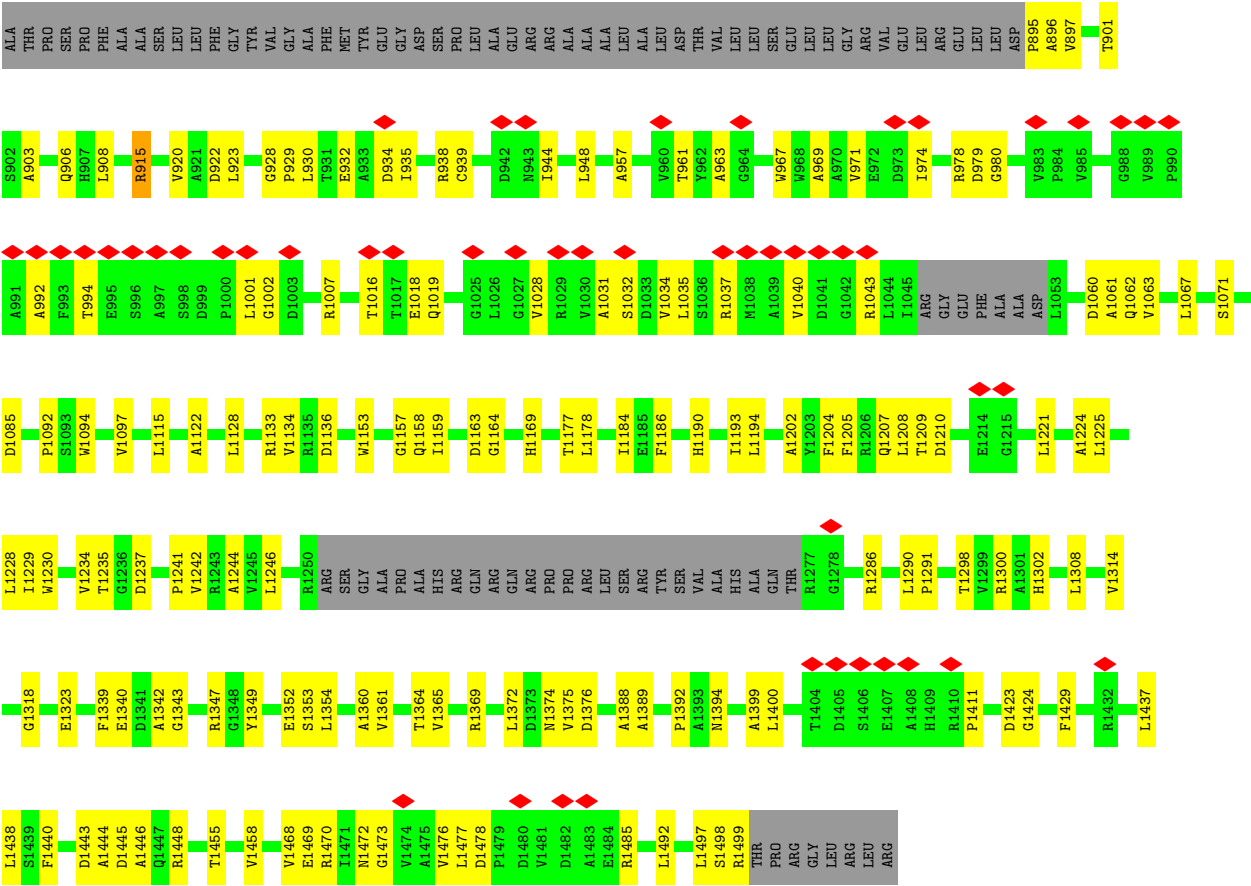
In the tables below, the AltConf column contains the number of residues with at least one atom in alternate conformation and the Trace column contains the number of residues modelled with at most 2 atoms.

- Molecule 1 is a protein called ATP-dependent DNA helicase.

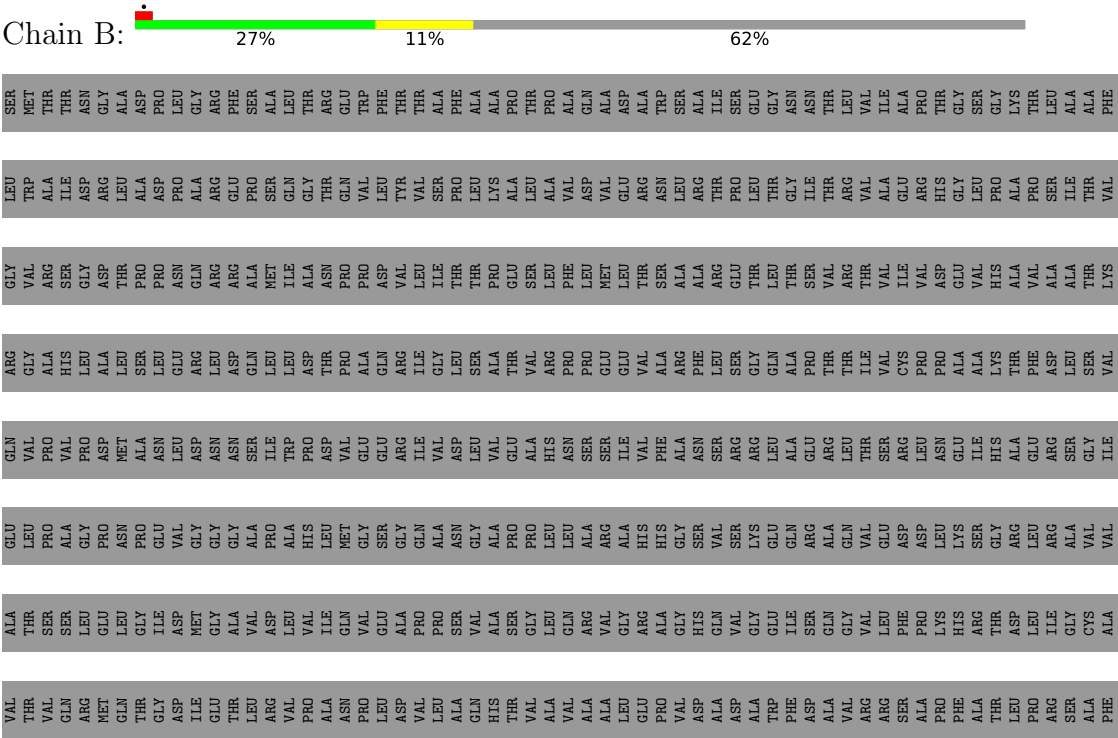
Mol	Chain	Residues	Atoms					AltConf	Trace
1	A	572	Total	C	N	O	S	0	0
			4270	2689	769	806	6		
1	B	569	Total	C	N	O	S	0	0
			4249	2676	764	804	5		
1	C	568	Total	C	N	O	S	0	0
			4254	2677	769	803	5		
1	D	576	Total	C	N	O	S	0	0
			4302	2709	777	811	5		

There are 4 discrepancies between the modelled and reference sequences:

Chain	Residue	Modelled	Actual	Comment	Reference
A	0	SER	-	expression tag	UNP A0A0D6HFY2
B	0	SER	-	expression tag	UNP A0A0D6HFY2
C	0	SER	-	expression tag	UNP A0A0D6HFY2
D	0	SER	-	expression tag	UNP A0A0D6HFY2



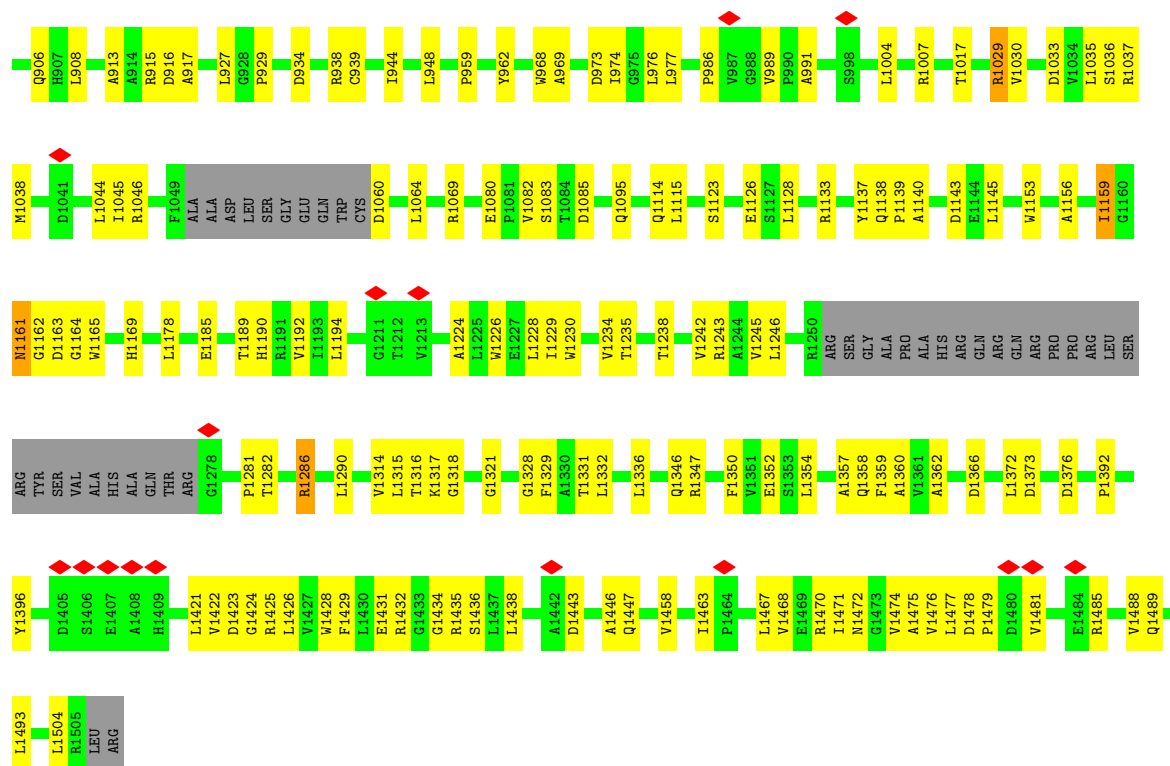
● Molecule 1: ATP-dependent DNA helicase











4 Experimental information

Property	Value	Source
EM reconstruction method	SINGLE PARTICLE	Depositor
Imposed symmetry	POINT, C1	Depositor
Number of particles used	101323	Depositor
Resolution determination method	FSC 0.143 CUT-OFF	Depositor
CTF correction method	PHASE FLIPPING AND AMPLITUDE CORRECTION	Depositor
Microscope	FEI TITAN KRIOS	Depositor
Voltage (kV)	300	Depositor
Electron dose ($e^-/\text{\AA}^2$)	53	Depositor
Minimum defocus (nm)	Not provided	
Maximum defocus (nm)	Not provided	
Magnification	47262	Depositor
Image detector	GATAN K3 (6k x 4k)	Depositor
Maximum map value	0.102	Depositor
Minimum map value	-0.068	Depositor
Average map value	-0.000	Depositor
Map value standard deviation	0.004	Depositor
Recommended contour level	0.015	Depositor
Map size (\AA)	272.384, 272.384, 272.384	wwPDB
Map dimensions	256, 256, 256	wwPDB
Map angles ($^\circ$)	90.0, 90.0, 90.0	wwPDB
Pixel spacing (\AA)	1.064, 1.064, 1.064	Depositor

5 Model quality [i](#)

5.1 Standard geometry [i](#)

The Z score for a bond length (or angle) is the number of standard deviations the observed value is removed from the expected value. A bond length (or angle) with $|Z| > 5$ is considered an outlier worth inspection. RMSZ is the root-mean-square of all Z scores of the bond lengths (or angles).

Mol	Chain	Bond lengths		Bond angles	
		RMSZ	$\# Z > 5$	RMSZ	$\# Z > 5$
1	A	0.39	0/4361	0.50	0/5951
1	B	0.40	0/4339	0.51	0/5922
1	C	0.41	0/4342	0.51	0/5920
1	D	0.43	0/4393	0.51	0/5994
All	All	0.41	0/17435	0.51	0/23787

There are no bond length outliers.

There are no bond angle outliers.

There are no chirality outliers.

There are no planarity outliers.

5.2 Too-close contacts [i](#)

In the following table, the Non-H and H(model) columns list the number of non-hydrogen atoms and hydrogen atoms in the chain respectively. The H(added) column lists the number of hydrogen atoms added and optimized by MolProbity. The Clashes column lists the number of clashes within the asymmetric unit, whereas Symm-Clashes lists symmetry-related clashes.

Mol	Chain	Non-H	H(model)	H(added)	Clashes	Symm-Clashes
1	A	4270	0	4214	113	0
1	B	4249	0	4191	116	0
1	C	4254	0	4199	137	0
1	D	4302	0	4252	126	0
All	All	17075	0	16856	481	0

The all-atom clashscore is defined as the number of clashes found per 1000 atoms (including hydrogen atoms). The all-atom clashscore for this structure is 14.

All (481) close contacts within the same asymmetric unit are listed below, sorted by their clash magnitude.

Atom-1	Atom-2	Interatomic distance (Å)	Clash overlap (Å)
1:D:1164:GLY:HA3	1:D:1230:TRP:CZ3	1.81	1.15
1:D:1164:GLY:HA3	1:D:1230:TRP:CH2	2.04	0.91
1:C:1336:LEU:HB3	1:C:1359:PHE:CE2	2.07	0.89
1:C:1340:GLU:OE1	1:C:1347:ARG:HB2	1.73	0.88
1:C:1419:VAL:HG22	1:C:1421:LEU:HD23	1.55	0.87
1:D:1316:THR:HG21	1:D:1354:LEU:HD13	1.61	0.82
1:B:1468:VAL:HG22	1:B:1499:ARG:HG2	1.60	0.82
1:C:1314:VAL:HG12	1:C:1360:ALA:HB2	1.63	0.80
1:C:1347:ARG:HG3	1:C:1347:ARG:HH11	1.47	0.79
1:C:1471:ILE:HG12	1:C:1472:ASN:H	1.47	0.79
1:A:1122:ALA:HB3	1:A:1163:ASP:O	1.83	0.78
1:C:1426:LEU:CD1	1:C:1428:TRP:O	2.32	0.77
1:A:903:ALA:HB1	1:A:908:LEU:HB2	1.65	0.77
1:B:1314:VAL:HA	1:B:1360:ALA:HB2	1.67	0.77
1:B:1485:ARG:HB3	1:B:1489:GLN:HE22	1.50	0.77
1:A:1290:LEU:HD12	1:A:1291:PRO:HD2	1.67	0.76
1:C:1419:VAL:HG22	1:C:1421:LEU:CD2	2.15	0.76
1:D:1431:GLU:HG2	1:D:1432:ARG:HG2	1.65	0.76
1:A:1472:ASN:OD1	1:A:1473:GLY:N	2.17	0.76
1:B:1316:THR:HG21	1:B:1354:LEU:HD23	1.67	0.75
1:B:1384:ALA:HA	1:B:1422:VAL:HA	1.69	0.75
1:C:1027:GLY:O	1:C:1029:ARG:NH1	2.19	0.74
1:C:1336:LEU:HB3	1:C:1359:PHE:CD2	2.21	0.74
1:C:1008:TYR:O	1:C:1012:ARG:NH1	2.21	0.74
1:A:1353:SER:HB2	1:A:1354:LEU:HD12	1.70	0.73
1:B:1349:TYR:OH	1:B:1352:GLU:O	2.03	0.72
1:D:1159:ILE:HG22	1:D:1162:GLY:H	1.54	0.72
1:D:1139:PRO:O	1:D:1243:ARG:NH2	2.23	0.72
1:D:1443:ASP:HB2	1:D:1446:ALA:HB3	1.71	0.72
1:D:1476:VAL:HG11	1:D:1485:ARG:HE	1.55	0.72
1:D:1164:GLY:CA	1:D:1230:TRP:CZ3	2.69	0.71
1:B:1290:LEU:HD12	1:B:1291:PRO:HD2	1.73	0.71
1:B:1034:VAL:HG12	1:B:1037:ARG:HH11	1.55	0.70
1:C:1426:LEU:HD13	1:C:1428:TRP:O	1.91	0.70
1:C:1358:GLN:OE1	1:C:1358:GLN:N	2.25	0.70
1:D:1164:GLY:CA	1:D:1230:TRP:CH2	2.76	0.69
1:C:915:ARG:NH1	1:D:1366:ASP:OD2	2.25	0.69
1:D:973:ASP:OD2	1:D:1007:ARG:NH2	2.23	0.69
1:C:1361:VAL:HG12	1:C:1364:THR:H	1.58	0.68
1:D:1336:LEU:HB3	1:D:1359:PHE:HE2	1.58	0.68
1:C:1474:VAL:O	1:C:1485:ARG:NH1	2.27	0.68
1:A:1470:ARG:NH1	1:A:1498:SER:O	2.28	0.67

Continued on next page...

Continued from previous page...

Atom-1	Atom-2	Interatomic distance (Å)	Clash overlap (Å)
1:B:1369:ARG:HH12	1:B:1372:LEU:HD22	1.60	0.67
1:B:1369:ARG:HA	1:B:1369:ARG:HH11	1.60	0.67
1:C:1492:LEU:HD12	1:C:1497:LEU:HD13	1.77	0.67
1:A:1032:SER:HA	1:A:1035:LEU:HD12	1.77	0.66
1:C:1290:LEU:HD12	1:C:1291:PRO:HD2	1.76	0.66
1:B:1222:LYS:NZ	1:B:1280:ASP:OD2	2.29	0.66
1:C:1034:VAL:HA	1:C:1037:ARG:HB2	1.76	0.66
1:C:1186:PHE:O	1:C:1191:ARG:NH1	2.26	0.66
1:D:1435:ARG:HG2	1:D:1470:ARG:HE	1.60	0.66
1:A:929:PRO:HD3	1:A:1007:ARG:HH21	1.61	0.66
1:D:989:VAL:HG13	1:D:991:ALA:HB2	1.79	0.65
1:C:1346:GLN:HB3	1:C:1350:PHE:HZ	1.61	0.65
1:C:1349:TYR:HE1	1:C:1355:GLY:HA2	1.61	0.65
1:B:934:ASP:OD1	1:B:938:ARG:NH2	2.29	0.65
1:A:1178:LEU:O	1:A:1300:ARG:NH2	2.30	0.65
1:C:1366:ASP:OD2	1:D:915:ARG:NH2	2.29	0.65
1:B:1474:VAL:HG12	1:B:1476:VAL:HG23	1.79	0.65
1:A:980:GLY:HA3	1:A:1001:LEU:HD21	1.80	0.64
1:C:957:ALA:H	1:C:971:VAL:HG13	1.62	0.64
1:D:1336:LEU:HB3	1:D:1359:PHE:CE2	2.32	0.64
1:B:1347:ARG:HA	1:B:1359:PHE:HB3	1.79	0.64
1:C:961:THR:HG22	1:C:966:THR:HA	1.80	0.63
1:C:1426:LEU:C	1:C:1426:LEU:HD12	2.18	0.63
1:A:1205:PHE:HD1	1:A:1208:LEU:HD12	1.63	0.63
1:D:976:LEU:HB3	1:D:1004:LEU:HD21	1.79	0.63
1:A:1159:ILE:H	1:A:1164:GLY:HA2	1.63	0.63
1:C:1021:ALA:HB1	1:C:1027:GLY:HA2	1.81	0.63
1:D:1161:ASN:C	1:D:1161:ASN:HD22	2.01	0.63
1:A:1470:ARG:HG3	1:D:1504:LEU:HD11	1.81	0.62
1:B:1476:VAL:HG12	1:B:1478:ASP:H	1.64	0.62
1:C:1347:ARG:HH11	1:C:1347:ARG:CG	2.12	0.62
1:B:1351:VAL:HG21	1:B:1354:LEU:HD22	1.80	0.62
1:D:944:ILE:HG23	1:D:948:LEU:HD23	1.82	0.62
1:B:1153:TRP:CH2	1:B:1229:ILE:HD11	2.35	0.61
1:C:934:ASP:HA	1:C:937:GLN:HE21	1.64	0.61
1:C:1128:LEU:HD23	1:C:1388:ALA:HB2	1.81	0.61
1:A:1018:GLU:HG3	1:A:1028:VAL:HG22	1.81	0.61
1:C:1153:TRP:CZ2	1:C:1229:ILE:HD11	2.35	0.61
1:B:1169:HIS:HD2	1:B:1177:THR:HG23	1.66	0.61
1:C:1346:GLN:HA	1:C:1346:GLN:OE1	2.01	0.61
1:D:1481:VAL:HG12	1:D:1485:ARG:HH22	1.65	0.61

Continued on next page...

Continued from previous page...

Atom-1	Atom-2	Interatomic distance (Å)	Clash overlap (Å)
1:D:1069:ARG:NH2	1:D:1080:GLU:OE2	2.34	0.60
1:A:1092:PRO:HB3	1:A:1097:VAL:HG11	1.84	0.60
1:B:978:ARG:NH1	1:B:995:GLU:O	2.29	0.60
1:C:1033:ASP:O	1:C:1037:ARG:N	2.32	0.60
1:C:1406:SER:OG	1:C:1409:HIS:O	2.13	0.60
1:C:1431:GLU:HB3	1:C:1436:SER:HB3	1.84	0.60
1:B:978:ARG:HG3	1:B:984:PRO:HD3	1.83	0.60
1:A:963:ALA:HB3	1:A:967:TRP:HE1	1.67	0.59
1:D:1082:VAL:HG12	1:D:1372:LEU:HD13	1.84	0.59
1:D:1143:ASP:HB2	1:D:1243:ARG:HH22	1.66	0.59
1:B:1066:ILE:HD13	1:B:1375:VAL:HG12	1.84	0.59
1:B:1320:VAL:HG13	1:B:1325:VAL:HG21	1.85	0.59
1:A:1128:LEU:HD23	1:A:1388:ALA:HB2	1.84	0.58
1:A:1237:ASP:OD2	1:C:1286:ARG:NH1	2.36	0.58
1:B:1333:TYR:OH	1:B:1347:ARG:NH2	2.27	0.58
1:A:895:PRO:HG2	1:A:897:VAL:HG22	1.85	0.58
1:C:1350:PHE:CE2	1:C:1360:ALA:HB3	2.39	0.58
1:A:1343:GLY:HA3	1:B:917:ALA:HB2	1.86	0.58
1:D:989:VAL:HG22	1:D:991:ALA:H	1.68	0.58
1:A:1235:THR:HG21	1:A:1290:LEU:HD13	1.86	0.58
1:A:1037:ARG:HG3	1:A:1043:ARG:HH22	1.70	0.57
1:A:1153:TRP:HZ2	1:A:1242:VAL:HB	1.69	0.57
1:C:1395:PRO:HB2	1:C:1400:LEU:HD13	1.85	0.57
1:B:1137:TYR:O	1:B:1138:GLN:NE2	2.38	0.57
1:B:958:LEU:HG	1:B:971:VAL:HG12	1.86	0.57
1:B:1186:PHE:O	1:B:1191:ARG:NH1	2.37	0.57
1:D:1153:TRP:CH2	1:D:1229:ILE:HD11	2.40	0.57
1:A:934:ASP:O	1:A:938:ARG:NH2	2.37	0.57
1:A:1229:ILE:HD13	1:A:1234:VAL:HG23	1.86	0.57
1:D:1017:THR:HG22	1:D:1035:LEU:HD13	1.86	0.57
1:A:1184:ILE:HG23	1:A:1186:PHE:H	1.70	0.57
1:A:1060:ASP:OD1	1:A:1062:GLN:N	2.35	0.56
1:A:1352:GLU:OE1	1:A:1352:GLU:N	2.33	0.56
1:A:1369:ARG:HH11	1:A:1369:ARG:HA	1.70	0.56
1:B:997:ALA:H	1:B:1000:PRO:HG3	1.70	0.56
1:B:934:ASP:OD1	1:B:937:GLN:NE2	2.31	0.56
1:B:1237:ASP:CG	1:D:1286:ARG:HH21	2.09	0.56
1:C:1008:TYR:HE1	1:C:1023:ARG:HH11	1.54	0.56
1:C:1226:TRP:HE1	1:C:1282:THR:HG22	1.69	0.56
1:D:1085:ASP:HB2	1:D:1425:ARG:HH12	1.71	0.56
1:D:1153:TRP:O	1:D:1235:THR:OG1	2.17	0.56

Continued on next page...

Continued from previous page...

Atom-1	Atom-2	Interatomic distance (Å)	Clash overlap (Å)
1:A:957:ALA:H	1:A:971:VAL:HG23	1.71	0.56
1:D:1467:LEU:HD23	1:D:1467:LEU:H	1.70	0.56
1:C:1418:LEU:HB2	1:C:1430:LEU:HB2	1.88	0.55
1:B:917:ALA:O	1:B:920:VAL:HG12	2.06	0.55
1:B:1485:ARG:HB3	1:B:1489:GLN:NE2	2.21	0.55
1:C:1451:ALA:O	1:C:1455:THR:HG23	2.05	0.55
1:D:1095:GLN:HA	1:D:1114:GLN:HE22	1.71	0.55
1:A:1031:ALA:O	1:A:1035:LEU:N	2.32	0.55
1:B:906:GLN:HG3	1:B:938:ARG:HH11	1.72	0.55
1:D:1435:ARG:HA	1:D:1470:ARG:HE	1.72	0.55
1:B:909:THR:OG1	1:B:911:GLU:O	2.22	0.55
1:D:1422:VAL:HG23	1:D:1423:ASP:H	1.72	0.55
1:D:1376:ASP:N	1:D:1376:ASP:OD1	2.39	0.54
1:C:1125:VAL:HA	1:C:1129:VAL:HG22	1.89	0.54
1:C:1038:MET:HG3	1:C:1044:LEU:HD12	1.89	0.54
1:B:1472:ASN:HD22	1:B:1485:ARG:HH12	1.54	0.54
1:D:1346:GLN:HE21	1:D:1362:ALA:HA	1.72	0.54
1:D:1428:TRP:HE1	1:D:1447:GLN:NE2	2.05	0.54
1:B:1139:PRO:O	1:B:1243:ARG:NH2	2.40	0.54
1:B:1226:TRP:HA	1:B:1229:ILE:HG22	1.89	0.54
1:C:1153:TRP:HZ2	1:C:1229:ILE:HD11	1.72	0.54
1:B:1463:ILE:HG22	1:B:1465:SER:H	1.73	0.53
1:D:1044:LEU:HD13	1:D:1060:ASP:N	2.23	0.53
1:A:1298:THR:O	1:A:1302:HIS:ND1	2.35	0.53
1:B:1021:ALA:HA	1:B:1025:GLY:HA3	1.91	0.53
1:C:1197:LEU:HD23	1:C:1203:TYR:HD2	1.72	0.53
1:C:1153:TRP:CZ3	1:C:1236:GLY:HA3	2.43	0.53
1:D:1347:ARG:HH21	1:D:1357:ALA:HA	1.73	0.53
1:C:973:ASP:OD2	1:C:1007:ARG:NH2	2.41	0.53
1:C:1034:VAL:O	1:C:1038:MET:N	2.38	0.53
1:C:1481:VAL:HG23	1:C:1485:ARG:HE	1.72	0.53
1:D:895:PRO:HA	1:D:898:VAL:HG12	1.91	0.53
1:D:1476:VAL:HG11	1:D:1485:ARG:NE	2.24	0.53
1:C:1435:ARG:N	1:C:1468:VAL:HG23	2.24	0.52
1:D:1045:ILE:HG22	1:D:1046:ARG:H	1.74	0.52
1:B:1180:HIS:CD2	1:B:1181:GLY:H	2.27	0.52
1:C:1155:GLY:HA2	1:C:1166:VAL:HA	1.91	0.52
1:D:1115:LEU:HD12	1:D:1392:PRO:HG2	1.91	0.52
1:D:1421:LEU:HD12	1:D:1424:GLY:HA2	1.91	0.52
1:A:1094:TRP:CH2	1:A:1364:THR:HG22	2.45	0.52
1:C:1489:GLN:O	1:C:1493:LEU:HG	2.09	0.52

Continued on next page...

Continued from previous page...

Atom-1	Atom-2	Interatomic distance (Å)	Clash overlap (Å)
1:C:898:VAL:HA	1:C:1067:LEU:HD11	1.92	0.52
1:A:1340:GLU:HG3	1:A:1347:ARG:HG2	1.90	0.52
1:C:1164:GLY:HA3	1:C:1230:TRP:CZ3	2.44	0.52
1:C:1182:ALA:HB3	1:C:1231:ALA:HB1	1.90	0.52
1:B:1159:ILE:HG13	1:B:1160:GLY:N	2.24	0.52
1:C:1225:LEU:O	1:C:1228:LEU:N	2.42	0.52
1:D:1033:ASP:O	1:D:1036:SER:OG	2.24	0.52
1:D:1126:GLU:HB2	1:D:1137:TYR:HE2	1.75	0.52
1:A:1122:ALA:CB	1:A:1163:ASP:O	2.56	0.52
1:C:1090:PHE:HE2	1:C:1313:GLY:HA3	1.75	0.52
1:C:1361:VAL:HG13	1:C:1363:SER:H	1.75	0.52
1:D:1060:ASP:O	1:D:1064:LEU:HD23	2.11	0.51
1:A:1169:HIS:HD2	1:A:1177:THR:HG23	1.76	0.51
1:B:1153:TRP:HH2	1:B:1229:ILE:HD11	1.75	0.51
1:C:1387:LEU:HD13	1:C:1393:ALA:O	2.11	0.51
1:A:939:CYS:SG	1:A:944:ILE:HD12	2.50	0.51
1:A:906:GLN:HB3	1:A:908:LEU:HD23	1.92	0.51
1:C:1435:ARG:H	1:C:1468:VAL:HG23	1.75	0.51
1:B:1034:VAL:HA	1:B:1037:ARG:HB2	1.92	0.51
1:B:1037:ARG:O	1:B:1038:MET:HG2	2.11	0.51
1:C:1188:ASP:O	1:C:1192:VAL:HG23	2.11	0.51
1:C:1242:VAL:HA	1:C:1245:VAL:HG12	1.93	0.51
1:A:1429:PHE:HB3	1:A:1438:LEU:HB2	1.93	0.50
1:B:976:LEU:HD23	1:B:1004:LEU:HD21	1.94	0.50
1:B:1095:GLN:HA	1:B:1114:GLN:HE22	1.75	0.50
1:C:928:GLY:HA2	1:C:1007:ARG:HH12	1.77	0.50
1:B:1114:GLN:HG3	1:B:1115:LEU:HD12	1.94	0.50
1:C:909:THR:HG22	1:C:911:GLU:H	1.75	0.50
1:B:1156:ALA:O	1:B:1165:TRP:HB2	2.12	0.50
1:A:932:GLU:HA	1:A:935:ILE:HG22	1.92	0.50
1:C:1340:GLU:CD	1:C:1347:ARG:HB2	2.31	0.50
1:C:1426:LEU:HG	1:C:1426:LEU:O	2.11	0.50
1:A:1374:ASN:ND2	1:A:1376:ASP:OD2	2.45	0.50
1:B:1067:LEU:O	1:B:1071:SER:OG	2.27	0.50
1:D:1164:GLY:HA3	1:D:1230:TRP:CE3	2.38	0.50
1:D:1226:TRP:CZ2	1:D:1245:VAL:HG21	2.47	0.50
1:B:1129:VAL:O	1:B:1133:ARG:HG2	2.12	0.49
1:C:1157:GLY:O	1:C:1165:TRP:N	2.33	0.49
1:D:1314:VAL:HG12	1:D:1360:ALA:HB2	1.95	0.49
1:D:1194:LEU:CD2	1:D:1228:LEU:HD21	2.41	0.49
1:D:1431:GLU:HB3	1:D:1436:SER:HB3	1.94	0.49

Continued on next page...

Continued from previous page...

Atom-1	Atom-2	Interatomic distance (Å)	Clash overlap (Å)
1:D:916:ASP:OD1	1:D:917:ALA:N	2.44	0.49
1:A:1443:ASP:HB3	1:A:1446:ALA:HB3	1.94	0.49
1:B:1434:GLY:HA2	1:B:1468:VAL:HB	1.93	0.49
1:C:1070:ARG:O	1:C:1074:ALA:N	2.41	0.49
1:A:1365:VAL:O	1:A:1369:ARG:HG2	2.12	0.49
1:B:1142:LEU:O	1:B:1146:LEU:HD23	2.13	0.49
1:A:1497:LEU:HG	1:A:1499:ARG:H	1.76	0.49
1:B:1169:HIS:CD2	1:B:1178:LEU:HD22	2.48	0.49
1:C:1347:ARG:HD2	1:C:1347:ARG:O	2.13	0.49
1:D:1190:HIS:CD2	1:D:1224:ALA:HB1	2.48	0.49
1:A:971:VAL:O	1:A:974:ILE:HG22	2.13	0.48
1:A:1115:LEU:HD11	1:A:1133:ARG:NH1	2.28	0.48
1:C:1497:LEU:HD23	1:C:1498:SER:O	2.14	0.48
1:D:1458:VAL:HA	1:D:1463:ILE:HG22	1.95	0.48
1:A:1437:LEU:HG	1:A:1438:LEU:N	2.28	0.48
1:D:934:ASP:OD1	1:D:938:ARG:NH1	2.46	0.48
1:B:1044:LEU:HA	1:B:1060:ASP:N	2.29	0.48
1:B:1095:GLN:NE2	1:B:1311:ARG:O	2.45	0.48
1:C:1244:ALA:O	1:C:1247:SER:N	2.46	0.48
1:A:1369:ARG:HH12	1:A:1372:LEU:HD23	1.77	0.48
1:A:1389:ALA:HA	1:A:1394:ASN:HD22	1.79	0.48
1:B:1086:ALA:HA	1:B:1089:ARG:NH1	2.28	0.48
1:C:1474:VAL:HB	1:C:1485:ARG:HG3	1.95	0.48
1:D:1350:PHE:N	1:D:1358:GLN:OE1	2.40	0.48
1:A:929:PRO:HB3	1:A:969:ALA:HB2	1.95	0.48
1:C:981:ILE:HG22	1:C:982:GLY:H	1.79	0.48
1:B:936:ALA:HA	1:B:944:ILE:HG13	1.94	0.48
1:C:960:VAL:O	1:C:967:TRP:HB2	2.14	0.48
1:C:1235:THR:OG1	1:C:1290:LEU:HD13	2.13	0.48
1:D:1138:GLN:O	1:D:1140:ALA:N	2.47	0.48
1:B:1073:ALA:HA	1:B:1076:ARG:HG2	1.95	0.47
1:B:1226:TRP:NE1	1:B:1282:THR:HG22	2.29	0.47
1:B:1470:ARG:HG3	1:B:1471:ILE:HG12	1.96	0.47
1:C:1029:ARG:O	1:C:1032:SER:OG	2.26	0.47
1:C:1159:ILE:HD11	1:C:1165:TRP:CE2	2.48	0.47
1:C:1429:PHE:HB3	1:C:1438:LEU:HB2	1.96	0.47
1:D:906:GLN:HB3	1:D:908:LEU:HD23	1.95	0.47
1:D:1038:MET:HB3	1:D:1044:LEU:HD23	1.96	0.47
1:C:993:PHE:O	1:C:996:SER:OG	2.23	0.47
1:C:1242:VAL:O	1:C:1246:LEU:HG	2.15	0.47
1:C:1418:LEU:HD11	1:C:1463:ILE:HD12	1.96	0.47

Continued on next page...

Continued from previous page...

Atom-1	Atom-2	Interatomic distance (Å)	Clash overlap (Å)
1:A:1190:HIS:CD2	1:A:1224:ALA:HB1	2.49	0.47
1:A:1308:LEU:HD21	1:A:1323:GLU:HG2	1.95	0.47
1:B:1072:LEU:HD12	1:B:1073:ALA:H	1.79	0.47
1:C:1126:GLU:CD	1:C:1243:ARG:HE	2.16	0.47
1:C:1376:ASP:OD1	1:C:1376:ASP:N	2.47	0.47
1:D:1226:TRP:CE2	1:D:1245:VAL:HG21	2.49	0.47
1:C:1154:SER:O	1:C:1154:SER:OG	2.30	0.47
1:A:1016:THR:O	1:A:1019:GLN:HG2	2.15	0.47
1:A:1476:VAL:O	1:A:1485:ARG:NE	2.47	0.47
1:B:1092:PRO:HB3	1:B:1097:VAL:HG11	1.97	0.47
1:B:1279:THR:OG1	1:B:1280:ASP:N	2.43	0.47
1:B:1365:VAL:O	1:B:1369:ARG:HG2	2.14	0.47
1:C:1041:ASP:O	1:C:1043:ARG:NH1	2.46	0.47
1:C:1146:LEU:HD13	1:C:1151:VAL:HG23	1.95	0.47
1:D:1169:HIS:CE1	1:D:1178:LEU:HD23	2.49	0.47
1:B:985:VAL:HG22	1:B:987:VAL:HG12	1.96	0.47
1:C:1143:ASP:OD1	1:C:1243:ARG:NH2	2.48	0.47
1:D:1354:LEU:HB2	1:D:1358:GLN:NE2	2.30	0.47
1:D:1434:GLY:HA3	1:D:1468:VAL:H	1.80	0.47
1:A:1349:TYR:OH	1:A:1352:GLU:O	2.23	0.47
1:D:1336:LEU:HD13	1:D:1359:PHE:CD2	2.49	0.47
1:A:992:ALA:HB1	1:A:994:THR:HG23	1.96	0.46
1:B:1202:ALA:HB1	1:B:1286:ARG:HB3	1.96	0.46
1:C:1126:GLU:HG3	1:C:1137:TYR:HE2	1.80	0.46
1:D:1123:SER:HB3	1:D:1163:ASP:OD2	2.16	0.46
1:D:1229:ILE:HG13	1:D:1234:VAL:O	2.15	0.46
1:B:1110:THR:O	1:B:1113:GLU:HB3	2.15	0.46
1:C:1194:LEU:C	1:C:1196:THR:H	2.19	0.46
1:D:1485:ARG:NH1	1:D:1489:GLN:HG3	2.31	0.46
1:B:1063:VAL:HG12	1:B:1067:LEU:HD23	1.98	0.46
1:C:967:TRP:HZ3	1:C:1023:ARG:HH21	1.64	0.46
1:C:1407:GLU:H	1:C:1407:GLU:CD	2.19	0.46
1:C:1349:TYR:CE1	1:C:1355:GLY:HA2	2.44	0.46
1:A:1314:VAL:HG12	1:A:1360:ALA:HB2	1.97	0.46
1:A:1423:ASP:OD1	1:A:1424:GLY:N	2.47	0.46
1:D:1477:LEU:HD23	1:D:1477:LEU:H	1.80	0.46
1:B:1161:ASN:OD1	1:B:1162:GLY:N	2.49	0.46
1:C:1309:LEU:HD23	1:C:1309:LEU:HA	1.67	0.46
1:C:1381:GLU:OE1	1:C:1383:HIS:HB2	2.16	0.46
1:B:1396:TYR:CD2	1:B:1426:LEU:HD23	2.51	0.45
1:B:1469:GLU:O	1:B:1469:GLU:HG2	2.15	0.45

Continued on next page...

Continued from previous page...

Atom-1	Atom-2	Interatomic distance (Å)	Clash overlap (Å)
1:C:1346:GLN:HB3	1:C:1350:PHE:CZ	2.47	0.45
1:A:1169:HIS:CD2	1:A:1177:THR:HG23	2.51	0.45
1:A:930:LEU:HD12	1:A:934:ASP:HB3	1.98	0.45
1:D:1143:ASP:OD1	1:D:1238:THR:HB	2.17	0.45
1:A:961:THR:OG1	1:A:963:ALA:O	2.33	0.45
1:A:1060:ASP:HB3	1:A:1063:VAL:HG12	1.99	0.45
1:C:1238:THR:HG23	1:C:1240:ALA:H	1.82	0.45
1:B:1244:ALA:O	1:B:1247:SER:OG	2.26	0.45
1:A:1134:VAL:HG12	1:A:1136:ASP:H	1.81	0.45
1:B:1470:ARG:NH1	1:C:1501:PRO:O	2.33	0.45
1:B:1473:GLY:C	1:B:1475:ALA:H	2.20	0.45
1:A:1339:PHE:O	1:A:1342:ALA:N	2.50	0.45
1:B:1182:ALA:HB3	1:B:1231:ALA:HB1	1.99	0.45
1:B:1476:VAL:HG12	1:B:1478:ASP:N	2.30	0.45
1:C:1347:ARG:CG	1:C:1347:ARG:NH1	2.73	0.45
1:D:1318:GLY:O	1:D:1321:GLY:N	2.46	0.45
1:D:1429:PHE:HB3	1:D:1438:LEU:HB2	1.99	0.45
1:D:1474:VAL:O	1:D:1474:VAL:HG13	2.17	0.45
1:A:932:GLU:O	1:A:935:ILE:HG22	2.17	0.45
1:C:1481:VAL:HG23	1:C:1485:ARG:HH21	1.81	0.45
1:D:1373:ASP:OD1	1:D:1373:ASP:N	2.48	0.45
1:A:1060:ASP:OD1	1:A:1061:ALA:N	2.50	0.44
1:B:1384:ALA:HB2	1:B:1422:VAL:HG12	1.99	0.44
1:B:1394:ASN:HD21	1:B:1419:VAL:HG21	1.82	0.44
1:D:898:VAL:O	1:D:902:SER:OG	2.15	0.44
1:D:1281:PRO:O	1:D:1282:THR:OG1	2.30	0.44
1:D:1489:GLN:O	1:D:1493:LEU:HG	2.16	0.44
1:A:1455:THR:HA	1:A:1458:VAL:HG22	1.98	0.44
1:A:1469:GLU:OE2	1:A:1492:LEU:HD22	2.17	0.44
1:B:1010:ARG:HG2	1:B:1377:PRO:HB3	1.99	0.44
1:C:1471:ILE:HG12	1:C:1472:ASN:N	2.25	0.44
1:B:1429:PHE:HB3	1:B:1438:LEU:HB2	1.99	0.44
1:B:1467:LEU:O	1:B:1499:ARG:HB3	2.17	0.44
1:D:1114:GLN:HG2	1:D:1115:LEU:HD22	2.00	0.44
1:A:1242:VAL:O	1:A:1246:LEU:HD23	2.18	0.44
1:A:1318:GLY:HA3	1:A:1399:ALA:HA	2.00	0.44
1:B:1469:GLU:OE1	1:B:1469:GLU:N	2.50	0.44
1:C:1138:GLN:H	1:C:1141:MET:HE3	1.82	0.44
1:C:1185:GLU:OE2	1:C:1185:GLU:N	2.49	0.44
1:B:1127:SER:OG	1:B:1462:ARG:O	2.35	0.44
1:C:1453:ALA:HA	1:C:1456:ASP:OD2	2.17	0.44

Continued on next page...

Continued from previous page...

Atom-1	Atom-2	Interatomic distance (Å)	Clash overlap (Å)
1:D:906:GLN:OE1	1:D:927:LEU:HD22	2.17	0.44
1:D:1060:ASP:N	1:D:1060:ASP:OD1	2.50	0.44
1:D:1226:TRP:NE1	1:D:1245:VAL:HG21	2.33	0.44
1:D:1477:LEU:HG	1:D:1479:PRO:HD2	1.99	0.44
1:A:920:VAL:HG13	1:A:935:ILE:HD11	1.99	0.44
1:B:1225:LEU:O	1:B:1228:LEU:N	2.49	0.44
1:C:975:GLY:HA3	1:C:996:SER:HB3	1.99	0.44
1:A:895:PRO:HB2	1:A:896:ALA:H	1.65	0.44
1:A:922:ASP:OD1	1:A:923:LEU:N	2.51	0.44
1:D:1030:VAL:HA	1:D:1033:ASP:OD2	2.18	0.44
1:D:1422:VAL:HG23	1:D:1423:ASP:N	2.32	0.44
1:B:1336:LEU:HB3	1:B:1359:PHE:CZ	2.53	0.43
1:D:962:TYR:CE1	1:D:977:LEU:HD21	2.53	0.43
1:A:1443:ASP:OD1	1:A:1444:ALA:N	2.45	0.43
1:C:1458:VAL:HG12	1:C:1463:ILE:HG23	2.00	0.43
1:A:1031:ALA:HA	1:A:1034:VAL:HG22	2.00	0.43
1:A:1193:ILE:HD11	1:A:1221:LEU:HD11	2.00	0.43
1:C:930:LEU:HD23	1:C:1023:ARG:HH22	1.84	0.43
1:A:1184:ILE:HD12	1:A:1184:ILE:HA	1.92	0.43
1:A:1225:LEU:O	1:A:1228:LEU:N	2.51	0.43
1:A:1241:PRO:O	1:A:1244:ALA:N	2.46	0.43
1:A:1476:VAL:O	1:A:1476:VAL:HG23	2.18	0.43
1:C:1153:TRP:CD1	1:C:1153:TRP:C	2.92	0.43
1:C:1445:ASP:HA	1:C:1448:ARG:HG3	1.99	0.43
1:D:1435:ARG:HA	1:D:1470:ARG:NE	2.32	0.43
1:A:980:GLY:CA	1:A:1001:LEU:HD21	2.47	0.43
1:C:1332:LEU:HD23	1:C:1332:LEU:HA	1.81	0.43
1:C:1485:ARG:HD2	1:C:1485:ARG:O	2.19	0.43
1:D:929:PRO:HB3	1:D:969:ALA:HB2	2.01	0.43
1:D:1045:ILE:HG22	1:D:1046:ARG:N	2.33	0.43
1:D:1153:TRP:CZ2	1:D:1242:VAL:HG21	2.53	0.43
1:D:1328:GLY:O	1:D:1331:THR:OG1	2.34	0.43
1:D:1332:LEU:HA	1:D:1332:LEU:HD23	1.78	0.43
1:D:1347:ARG:HE	1:D:1359:PHE:HE1	1.65	0.43
1:A:1002:GLY:O	1:A:1037:ARG:NE	2.51	0.43
1:A:1308:LEU:HD23	1:A:1308:LEU:HA	1.85	0.43
1:B:1187:THR:HG22	1:B:1190:HIS:ND1	2.34	0.43
1:A:1190:HIS:HD2	1:A:1224:ALA:HB1	1.83	0.43
1:A:1375:VAL:O	1:A:1375:VAL:HG23	2.18	0.43
1:B:1035:LEU:HG	1:B:1044:LEU:HD22	2.00	0.43
1:B:1085:ASP:HA	1:B:1424:GLY:HA3	2.01	0.43

Continued on next page...

Continued from previous page...

Atom-1	Atom-2	Interatomic distance (Å)	Clash overlap (Å)
1:B:1438:LEU:C	1:B:1440:PHE:H	2.22	0.43
1:D:1396:TYR:OH	1:D:1424:GLY:O	2.25	0.43
1:D:1443:ASP:O	1:D:1447:GLN:HG2	2.18	0.43
1:B:1209:THR:O	1:B:1209:THR:OG1	2.35	0.43
1:C:928:GLY:HA2	1:C:1007:ARG:NH1	2.32	0.43
1:C:1153:TRP:HZ3	1:C:1236:GLY:HA3	1.82	0.43
1:C:1194:LEU:HD23	1:C:1228:LEU:HD21	2.00	0.43
1:C:1336:LEU:HD23	1:C:1359:PHE:CG	2.54	0.43
1:D:1033:ASP:O	1:D:1037:ARG:HG2	2.19	0.43
1:A:1067:LEU:O	1:A:1071:SER:OG	2.22	0.43
1:A:1158:GLN:HA	1:A:1164:GLY:HA2	2.01	0.43
1:C:1091:LEU:HA	1:C:1091:LEU:HD23	1.76	0.43
1:A:1445:ASP:O	1:A:1448:ARG:HB3	2.19	0.42
1:C:1136:ASP:OD1	1:C:1136:ASP:N	2.52	0.42
1:D:1478:ASP:HB2	1:D:1479:PRO:HD3	2.01	0.42
1:D:1485:ARG:HD2	1:D:1485:ARG:O	2.19	0.42
1:A:1085:ASP:HB2	1:A:1424:GLY:HA3	2.01	0.42
1:A:1477:LEU:HG	1:A:1478:ASP:N	2.35	0.42
1:A:1492:LEU:HD21	1:A:1498:SER:HB3	2.00	0.42
1:D:1164:GLY:N	1:D:1230:TRP:CH2	2.86	0.42
1:D:1317:LYS:HA	1:D:1329:PHE:CD1	2.53	0.42
1:D:1354:LEU:HB2	1:D:1358:GLN:HE21	1.84	0.42
1:B:956:ARG:HD2	1:B:956:ARG:HA	1.86	0.42
1:A:944:ILE:O	1:A:948:LEU:HD12	2.20	0.42
1:A:1115:LEU:HD11	1:A:1133:ARG:HH11	1.84	0.42
1:A:1202:ALA:HB2	1:C:1286:ARG:CZ	2.50	0.42
1:B:1045:ILE:HD13	1:B:1045:ILE:HA	1.86	0.42
1:B:1408:ALA:O	1:B:1410:ARG:NH1	2.53	0.42
1:B:1443:ASP:O	1:B:1447:GLN:NE2	2.52	0.42
1:C:1347:ARG:HA	1:C:1347:ARG:HD3	1.83	0.42
1:D:959:PRO:HA	1:D:968:TRP:HA	2.01	0.42
1:D:1083:SER:HA	1:D:1352:GLU:HB2	2.00	0.42
1:D:1314:VAL:O	1:D:1314:VAL:HG23	2.19	0.42
1:C:1067:LEU:HD13	1:C:1067:LEU:HA	1.84	0.42
1:D:913:ALA:HB1	1:D:938:ARG:O	2.20	0.42
1:D:1336:LEU:HD13	1:D:1359:PHE:HD2	1.85	0.42
1:B:1290:LEU:HD12	1:B:1290:LEU:HA	1.82	0.42
1:B:1369:ARG:HA	1:B:1369:ARG:NH1	2.30	0.42
1:A:978:ARG:NH2	1:A:979:ASP:OD1	2.53	0.42
1:B:1178:LEU:O	1:B:1300:ARG:NH2	2.51	0.42
1:B:1474:VAL:O	1:B:1475:ALA:HB3	2.20	0.42

Continued on next page...

Continued from previous page...

Atom-1	Atom-2	Interatomic distance (Å)	Clash overlap (Å)
1:C:1118:VAL:HG21	1:C:1392:PRO:HG3	2.02	0.42
1:D:1145:LEU:HD12	1:D:1145:LEU:HA	1.86	0.42
1:A:1235:THR:CG2	1:A:1290:LEU:HD13	2.49	0.42
1:C:1092:PRO:HB3	1:C:1097:VAL:HG11	2.02	0.42
1:B:1082:VAL:HG12	1:B:1086:ALA:HB3	2.02	0.41
1:C:1385:VAL:O	1:C:1385:VAL:HG13	2.20	0.41
1:D:1290:LEU:HD23	1:D:1290:LEU:HA	1.79	0.41
1:D:1471:ILE:HB	1:D:1475:ALA:H	1.85	0.41
1:D:1472:ASN:HD21	1:D:1488:VAL:HG11	1.85	0.41
1:D:1156:ALA:O	1:D:1165:TRP:HB2	2.20	0.41
1:B:1429:PHE:O	1:B:1430:LEU:HD23	2.20	0.41
1:B:1069:ARG:NH1	1:B:1352:GLU:OE1	2.52	0.41
1:C:974:ILE:HD12	1:C:977:LEU:HD13	2.02	0.41
1:C:1174:ALA:N	1:C:1175:PRO:HD2	2.35	0.41
1:A:915:ARG:NH1	1:B:1366:ASP:OD2	2.53	0.41
1:B:1229:ILE:HG23	1:B:1230:TRP:N	2.35	0.41
1:C:1226:TRP:HA	1:C:1229:ILE:HG22	2.01	0.41
1:C:1369:ARG:HD3	1:C:1369:ARG:HA	1.74	0.41
1:D:1029:ARG:HD3	1:D:1029:ARG:H	1.85	0.41
1:D:1426:LEU:HD23	1:D:1426:LEU:O	2.21	0.41
1:A:1468:VAL:O	1:A:1470:ARG:NH1	2.48	0.41
1:B:1213:VAL:O	1:B:1218:GLY:HA3	2.21	0.41
1:D:974:ILE:HD12	1:D:974:ILE:HA	1.90	0.41
1:A:1040:VAL:HG23	1:A:1040:VAL:O	2.20	0.41
1:A:1157:GLY:O	1:A:1230:TRP:HB3	2.21	0.41
1:A:1399:ALA:O	1:A:1400:LEU:HD23	2.20	0.41
1:B:1336:LEU:HD13	1:B:1359:PHE:CE1	2.55	0.41
1:C:1143:ASP:OD1	1:C:1243:ARG:NH1	2.53	0.41
1:D:1128:LEU:HA	1:D:1128:LEU:HD12	1.84	0.41
1:D:1315:LEU:HD11	1:D:1336:LEU:HD11	2.03	0.41
1:D:1336:LEU:HD22	1:D:1359:PHE:HD2	1.86	0.41
1:A:928:GLY:HA2	1:A:1007:ARG:NH2	2.35	0.41
1:A:1204:PHE:HB2	1:A:1207:GLN:HE21	1.85	0.41
1:A:1209:THR:OG1	1:A:1210:ASP:N	2.53	0.41
1:A:1369:ARG:HA	1:A:1369:ARG:HD2	1.84	0.41
1:A:1411:PRO:HG3	1:A:1440:PHE:HZ	1.85	0.41
1:B:1065:LYS:HA	1:B:1065:LYS:HD3	1.84	0.41
1:C:958:LEU:HD23	1:C:958:LEU:H	1.85	0.41
1:A:897:VAL:O	1:A:901:THR:HG22	2.20	0.41
1:A:1286:ARG:NE	1:C:1237:ASP:OD1	2.42	0.41
1:B:980:GLY:HA2	1:B:1001:LEU:HD11	2.02	0.41

Continued on next page...

Continued from previous page...

Atom-1	Atom-2	Interatomic distance (Å)	Clash overlap (Å)
1:B:1106:ASP:OD1	1:B:1107:GLY:N	2.53	0.41
1:B:1143:ASP:OD1	1:B:1243:ARG:NH1	2.54	0.41
1:C:1030:VAL:O	1:C:1034:VAL:HG23	2.21	0.41
1:C:1081:PRO:HB2	1:C:1352:GLU:HB3	2.03	0.41
1:C:1332:LEU:HA	1:C:1335:VAL:HG12	2.03	0.41
1:D:1458:VAL:HG21	1:D:1467:LEU:HD22	2.03	0.41
1:D:986:PRO:O	1:D:989:VAL:HG12	2.20	0.41
1:A:915:ARG:HH12	1:B:1366:ASP:CG	2.23	0.40
1:A:1115:LEU:HD22	1:A:1392:PRO:HG2	2.03	0.40
1:C:1240:ALA:N	1:C:1241:PRO:HD2	2.37	0.40
1:D:944:ILE:HD13	1:D:944:ILE:HA	1.91	0.40
1:D:1133:ARG:H	1:D:1133:ARG:HG2	1.71	0.40
1:B:1169:HIS:NE2	1:B:1177:THR:O	2.55	0.40
1:B:1197:LEU:HB3	1:B:1289:ALA:HB2	2.03	0.40
1:D:1185:GLU:OE1	1:D:1185:GLU:N	2.54	0.40
1:D:1242:VAL:O	1:D:1246:LEU:HG	2.21	0.40
1:A:1194:LEU:HD23	1:A:1194:LEU:HA	1.93	0.40
1:A:1246:LEU:HA	1:A:1246:LEU:HD13	1.89	0.40
1:C:1391:ASP:O	1:C:1393:ALA:N	2.54	0.40
1:C:1457:LEU:HD12	1:C:1457:LEU:HA	1.86	0.40
1:D:1163:ASP:N	1:D:1163:ASP:OD1	2.54	0.40
1:B:1297:SER:OG	1:B:1299:VAL:HG12	2.21	0.40
1:B:1497:LEU:HD13	1:B:1500:THR:OG1	2.22	0.40
1:C:1065:LYS:HE3	1:C:1065:LYS:HB2	1.86	0.40
1:D:1189:THR:O	1:D:1192:VAL:HG12	2.22	0.40
1:A:1361:VAL:HG13	1:A:1364:THR:HG23	2.03	0.40
1:B:931:THR:HG23	1:B:934:ASP:HB2	2.03	0.40
1:B:1176:LEU:O	1:B:1300:ARG:NH2	2.54	0.40
1:D:939:CYS:SG	1:D:944:ILE:HD11	2.62	0.40

There are no symmetry-related clashes.

5.3 Torsion angles ⓘ

5.3.1 Protein backbone ⓘ

In the following table, the Percentiles column shows the percent Ramachandran outliers of the chain as a percentile score with respect to all PDB entries followed by that with respect to all EM entries.

The Analysed column shows the number of residues for which the backbone conformation was analysed, and the total number of residues.

Mol	Chain	Analysed	Favoured	Allowed	Outliers	Percentiles	
1	A	566/1508 (38%)	507 (90%)	59 (10%)	0	100	100
1	B	563/1508 (37%)	514 (91%)	49 (9%)	0	100	100
1	C	560/1508 (37%)	513 (92%)	47 (8%)	0	100	100
1	D	570/1508 (38%)	512 (90%)	58 (10%)	0	100	100
All	All	2259/6032 (38%)	2046 (91%)	213 (9%)	0	100	100

There are no Ramachandran outliers to report.

5.3.2 Protein sidechains ⓘ

In the following table, the Percentiles column shows the percent sidechain outliers of the chain as a percentile score with respect to all PDB entries followed by that with respect to all EM entries.

The Analysed column shows the number of residues for which the sidechain conformation was analysed, and the total number of residues.

Mol	Chain	Analysed	Rotameric	Outliers	Percentiles	
1	A	426/1178 (36%)	425 (100%)	1 (0%)	93	98
1	B	424/1178 (36%)	424 (100%)	0	100	100
1	C	424/1178 (36%)	418 (99%)	6 (1%)	67	85
1	D	429/1178 (36%)	425 (99%)	4 (1%)	78	90
All	All	1703/4712 (36%)	1692 (99%)	11 (1%)	86	94

All (11) residues with a non-rotameric sidechain are listed below:

Mol	Chain	Res	Type
1	A	915	ARG
1	C	1153	TRP
1	C	1347	ARG
1	C	1361	VAL
1	C	1421	LEU
1	C	1425	ARG
1	C	1426	LEU
1	D	1029	ARG
1	D	1159	ILE
1	D	1161	ASN
1	D	1286	ARG

Sometimes sidechains can be flipped to improve hydrogen bonding and reduce clashes. All (22)

such sidechains are listed below:

Mol	Chain	Res	Type
1	A	1114	GLN
1	A	1161	ASN
1	A	1207	GLN
1	B	906	GLN
1	B	952	HIS
1	B	1019	GLN
1	B	1114	GLN
1	B	1138	GLN
1	B	1158	GLN
1	B	1180	HIS
1	B	1489	GLN
1	C	906	GLN
1	C	937	GLN
1	C	952	HIS
1	C	1114	GLN
1	C	1409	HIS
1	D	952	HIS
1	D	1114	GLN
1	D	1161	ASN
1	D	1190	HIS
1	D	1346	GLN
1	D	1447	GLN

5.3.3 RNA [i](#)

There are no RNA molecules in this entry.

5.4 Non-standard residues in protein, DNA, RNA chains [i](#)

There are no non-standard protein/DNA/RNA residues in this entry.

5.5 Carbohydrates [i](#)

There are no monosaccharides in this entry.

5.6 Ligand geometry [i](#)

There are no ligands in this entry.

5.7 Other polymers [i](#)

There are no such residues in this entry.

5.8 Polymer linkage issues [i](#)

There are no chain breaks in this entry.

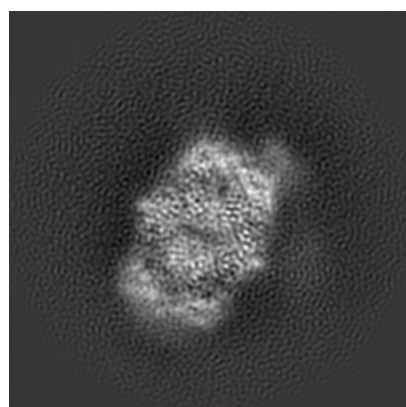
6 Map visualisation [i](#)

This section contains visualisations of the EMDB entry EMD-23345. These allow visual inspection of the internal detail of the map and identification of artifacts.

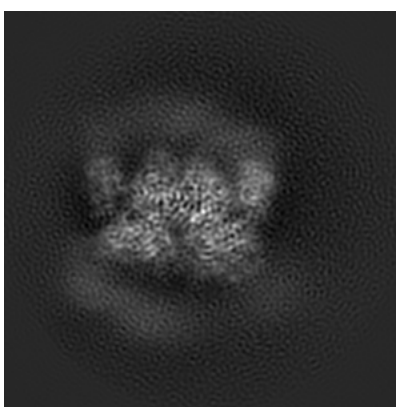
No raw map or half-maps were deposited for this entry and therefore no images, graphs, etc. pertaining to the raw map can be shown.

6.1 Orthogonal projections [i](#)

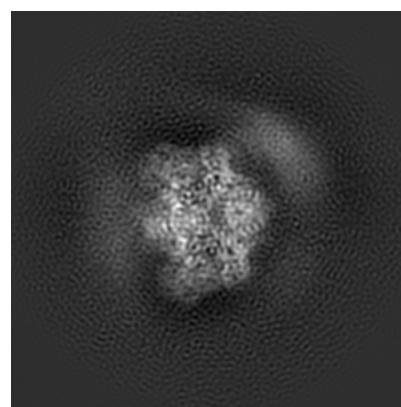
6.1.1 Primary map



X



Y

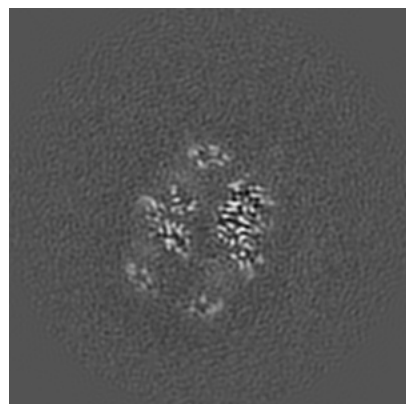


Z

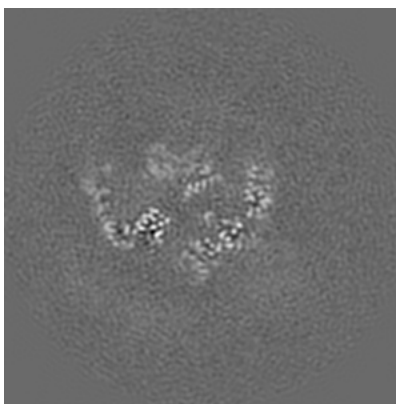
The images above show the map projected in three orthogonal directions.

6.2 Central slices [i](#)

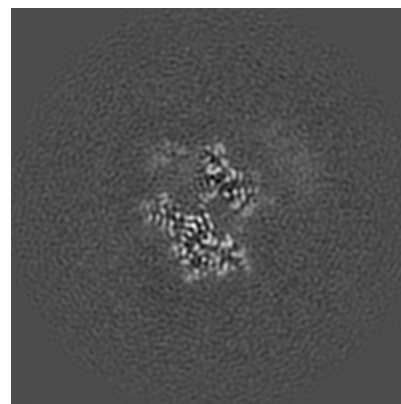
6.2.1 Primary map



X Index: 128



Y Index: 128

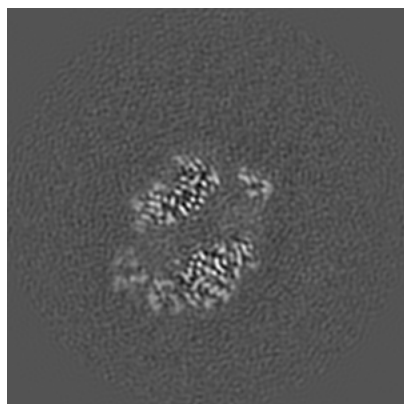


Z Index: 128

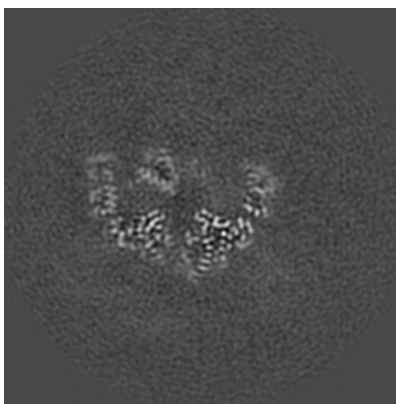
The images above show central slices of the map in three orthogonal directions.

6.3 Largest variance slices [i](#)

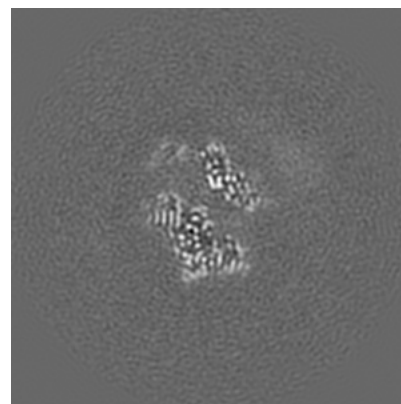
6.3.1 Primary map



X Index: 114



Y Index: 122



Z Index: 130

The images above show the largest variance slices of the map in three orthogonal directions.

6.4 Orthogonal surface views [i](#)

6.4.1 Primary map



X



Y



Z

The images above show the 3D surface view of the map at the recommended contour level 0.015. These images, in conjunction with the slice images, may facilitate assessment of whether an appropriate contour level has been provided.

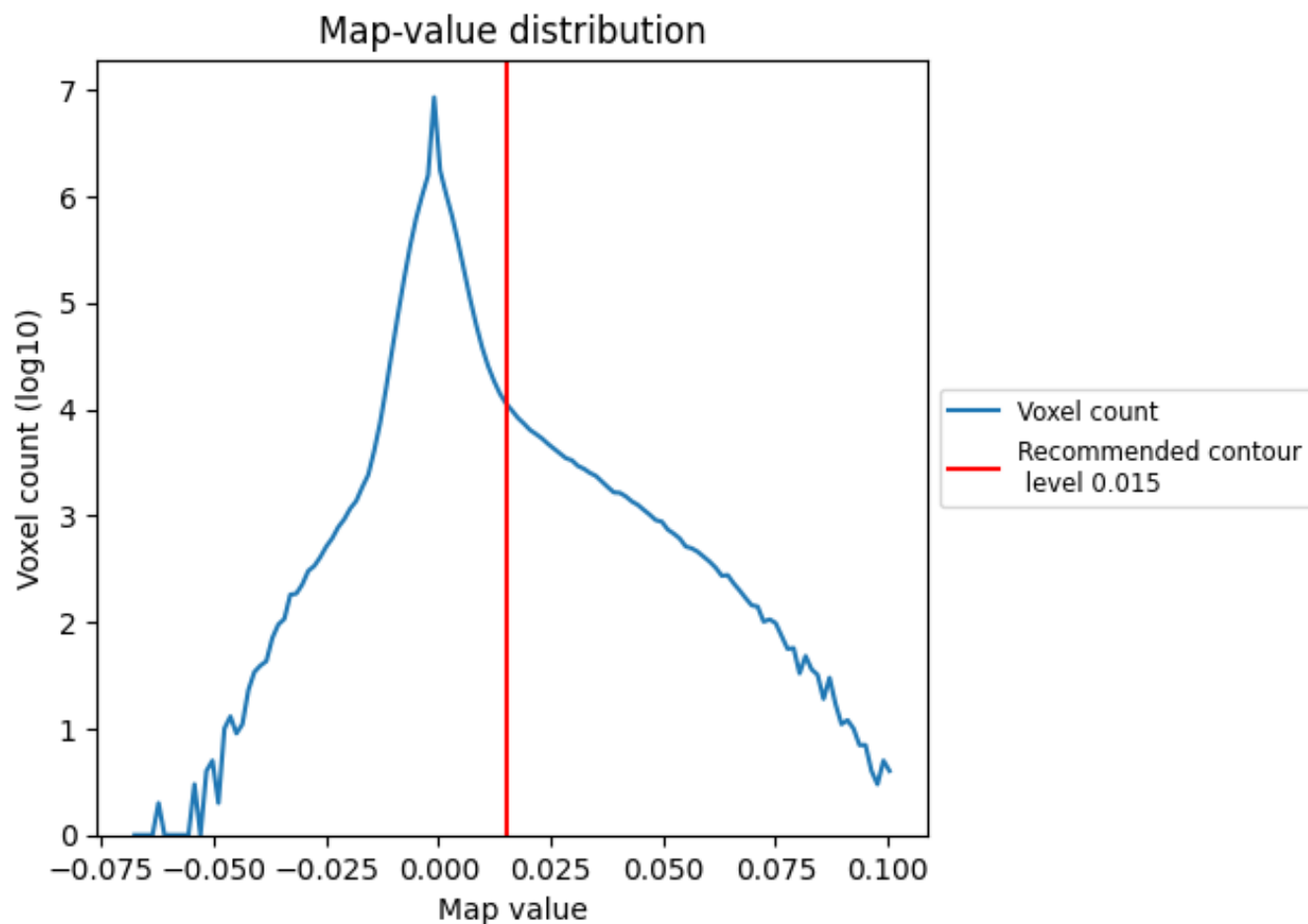
6.5 Mask visualisation

This section was not generated. No masks/segmentation were deposited.

7 Map analysis [i](#)

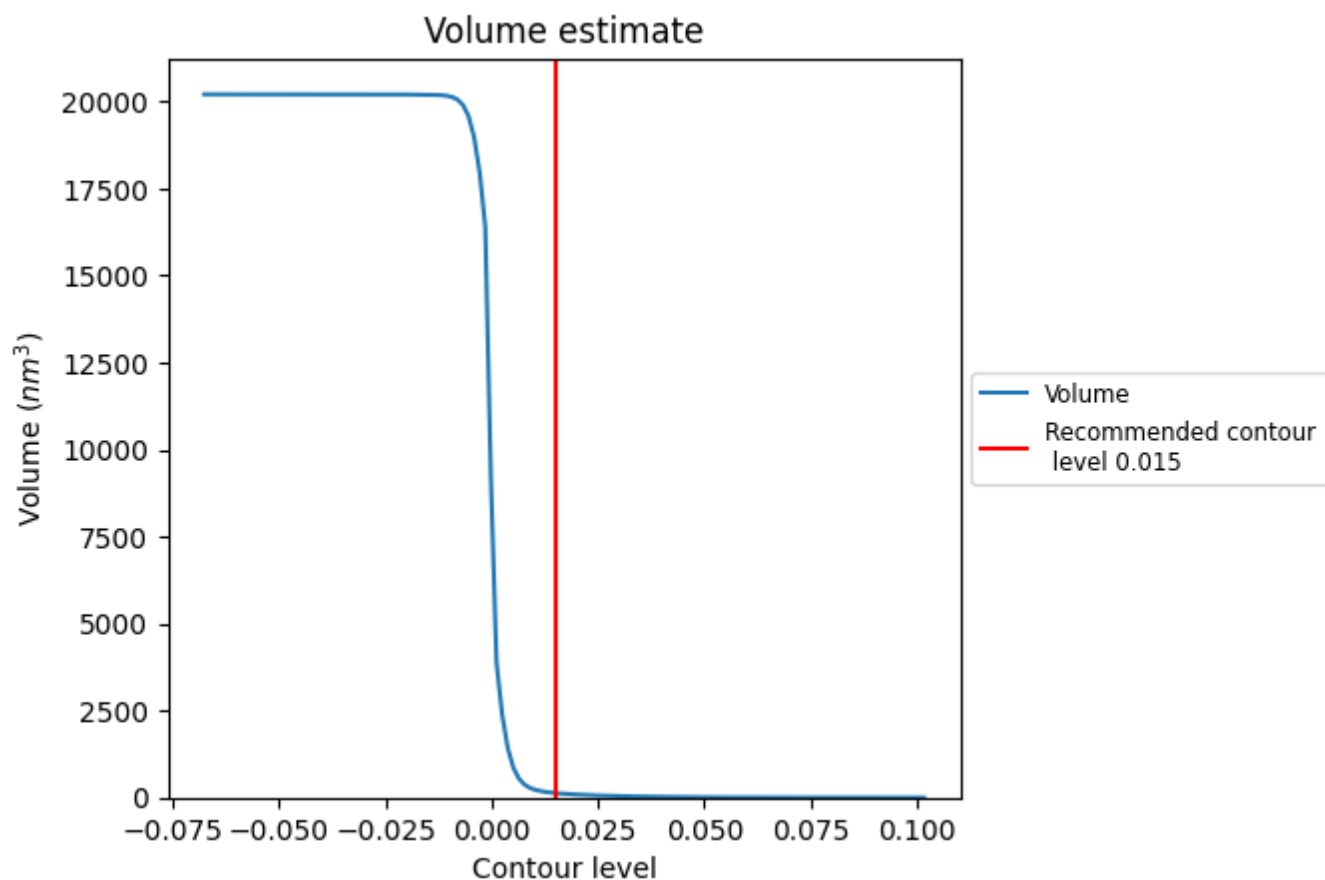
This section contains the results of statistical analysis of the map.

7.1 Map-value distribution [i](#)



The map-value distribution is plotted in 128 intervals along the x-axis. The y-axis is logarithmic. A spike in this graph at zero usually indicates that the volume has been masked.

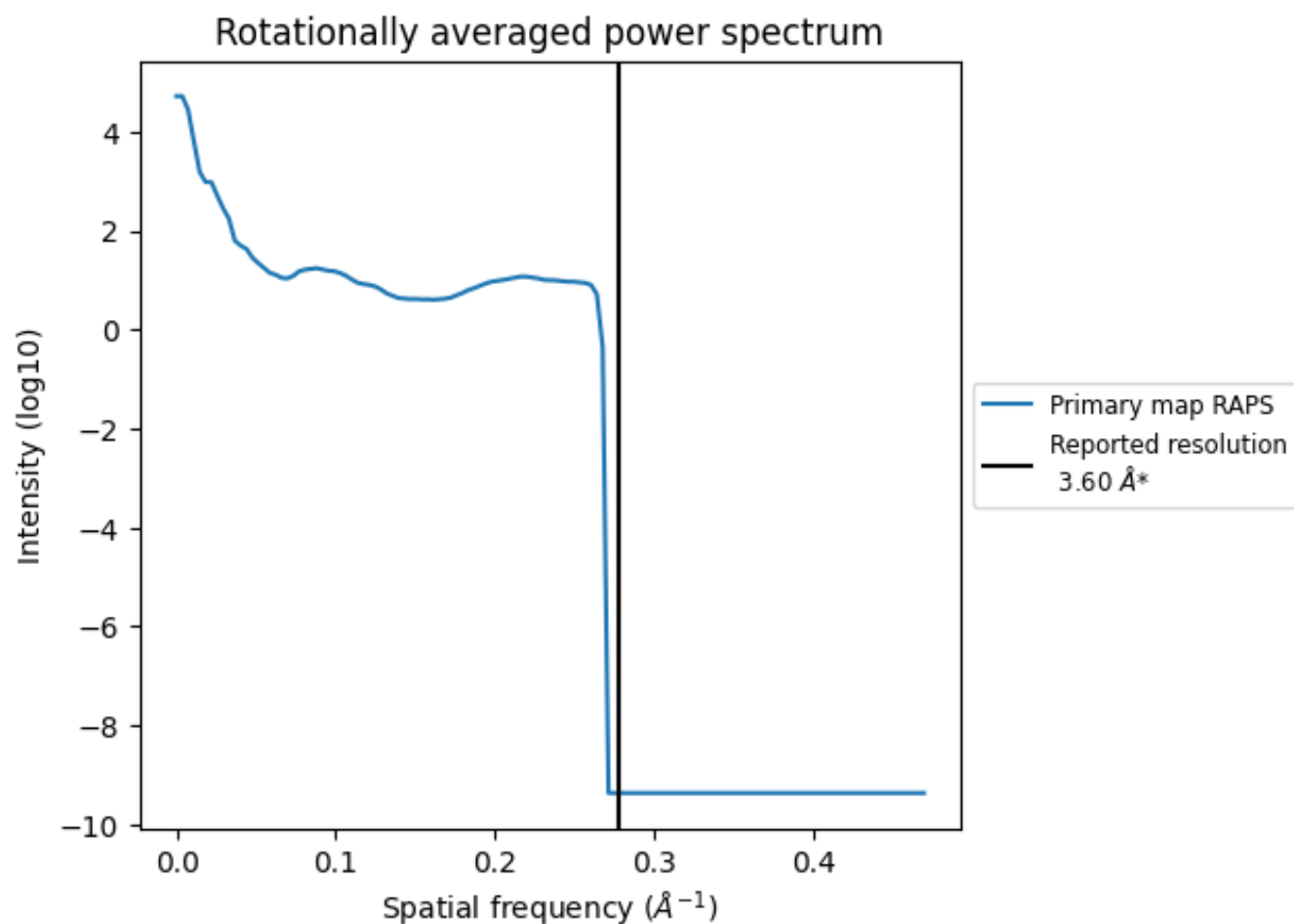
7.2 Volume estimate [i](#)



The volume at the recommended contour level is 129 nm³; this corresponds to an approximate mass of 116 kDa.

The volume estimate graph shows how the enclosed volume varies with the contour level. The recommended contour level is shown as a vertical line and the intersection between the line and the curve gives the volume of the enclosed surface at the given level.

7.3 Rotationally averaged power spectrum ⓘ



*Reported resolution corresponds to spatial frequency of 0.278 Å⁻¹

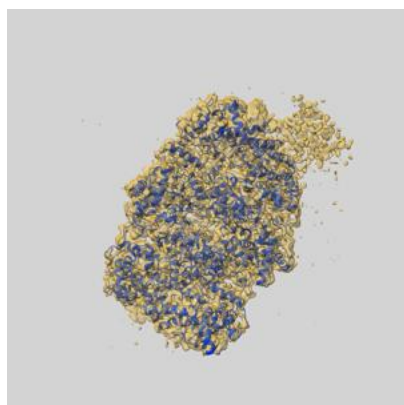
8 Fourier-Shell correlation

This section was not generated. No FSC curve or half-maps provided.

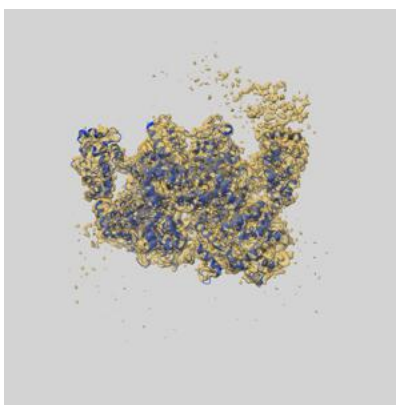
9 Map-model fit [i](#)

This section contains information regarding the fit between EMDB map EMD-23345 and PDB model 7LHL. Per-residue inclusion information can be found in [section 3](#) on [page 4](#).

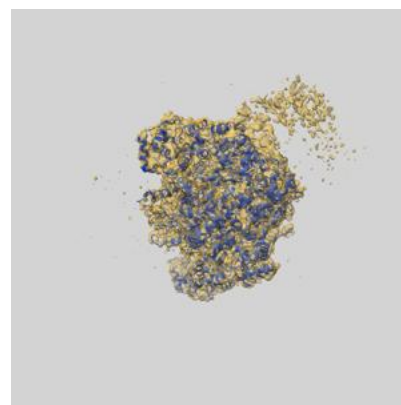
9.1 Map-model overlay [i](#)



X



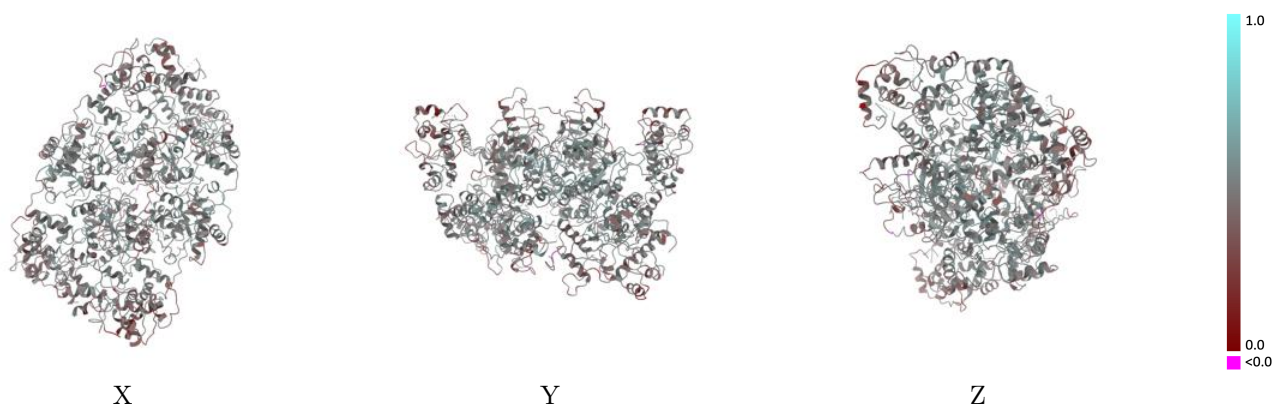
Y



Z

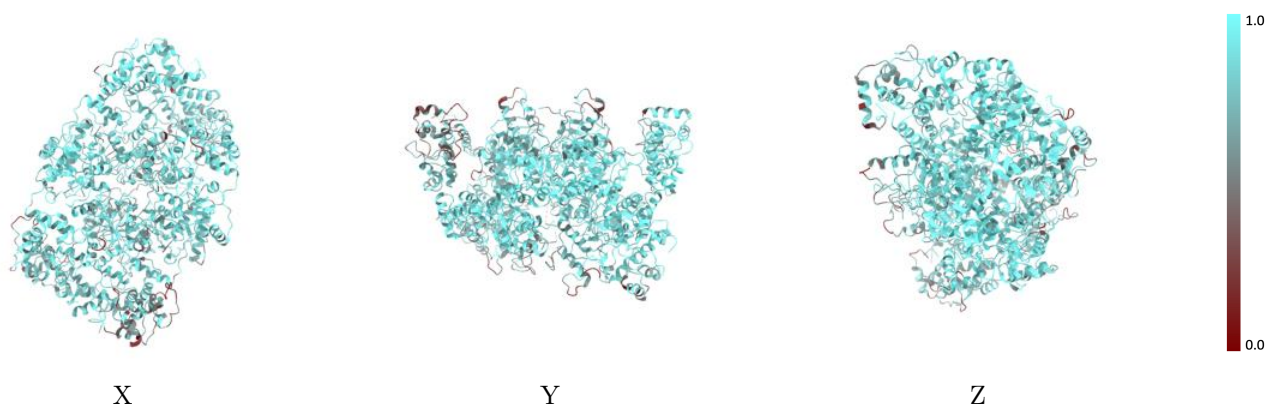
The images above show the 3D surface view of the map at the recommended contour level 0.015 at 50% transparency in yellow overlaid with a ribbon representation of the model coloured in blue. These images allow for the visual assessment of the quality of fit between the atomic model and the map.

9.2 Q-score mapped to coordinate model [i](#)



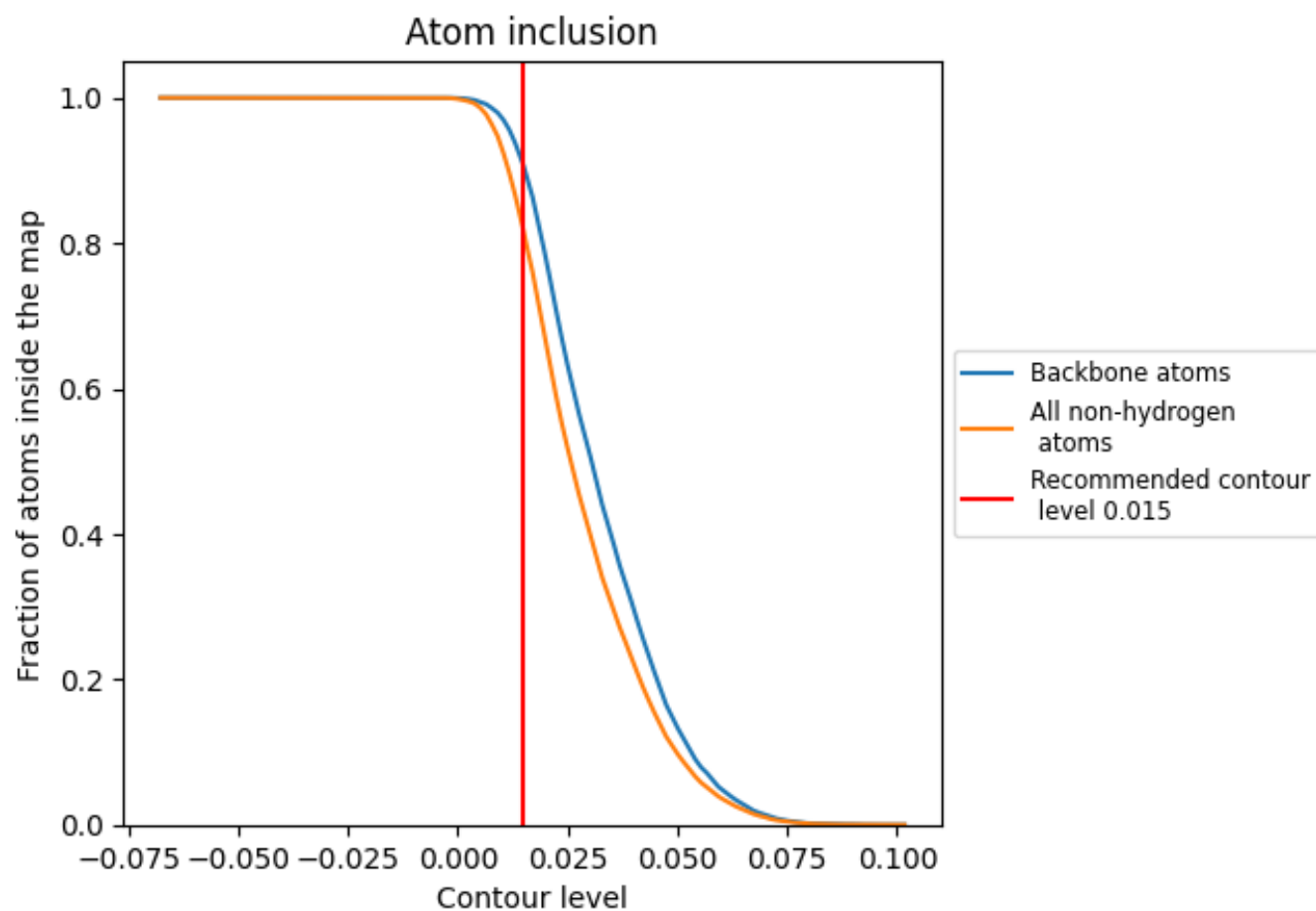
The images above show the model with each residue coloured according to its Q-score. This shows their resolvability in the map with higher Q-score values reflecting better resolvability. Please note: Q-score is calculating the resolvability of atoms, and thus high values are only expected at resolutions at which atoms can be resolved. Low Q-score values may therefore be expected for many entries.

9.3 Atom inclusion mapped to coordinate model [i](#)



The images above show the model with each residue coloured according to its atom inclusion. This shows to what extent they are inside the map at the recommended contour level (0.015).

9.4 Atom inclusion [i](#)



At the recommended contour level, 91% of all backbone atoms, 82% of all non-hydrogen atoms, are inside the map.

9.5 Map-model fit summary ⓘ

The table lists the average atom inclusion at the recommended contour level (0.015) and Q-score for the entire model and for each chain.

Chain	Atom inclusion	Q-score
All	<div></div> 0.8161	<div></div> 0.4710
A	<div></div> 0.7779	<div></div> 0.4640
B	<div></div> 0.7909	<div></div> 0.4630
C	<div></div> 0.8407	<div></div> 0.4780
D	<div></div> 0.8547	<div></div> 0.4790

