



Full wwPDB X-ray Structure Validation Report ⓘ

Oct 17, 2021 – 07:20 AM EDT

PDB ID : 1LI3
Title : T4 lysozyme mutant L99A/M102Q bound by 3-chlorophenol
Authors : Wei, B.Q.; Baase, W.A.; Weaver, L.H.; Matthews, B.W.; Shoichet, B.K.
Deposited on : 2002-04-17
Resolution : 1.85 Å(reported)

This is a Full wwPDB X-ray Structure Validation Report for a publicly released PDB entry.

We welcome your comments at validation@mail.wwpdb.org

A user guide is available at

<https://www.wwpdb.org/validation/2017/XrayValidationReportHelp>

with specific help available everywhere you see the ⓘ symbol.

The following versions of software and data (see [references ⓘ](#)) were used in the production of this report:

MolProbity : 4.02b-467
Mogul : 1.8.5 (274361), CSD as541be (2020)
Xtriage (Phenix) : 1.13
EDS : 2.23.2
Percentile statistics : 20191225.v01 (using entries in the PDB archive December 25th 2019)
Refmac : 5.8.0158
CCP4 : 7.0.044 (Gargrove)
Ideal geometry (proteins) : Engh & Huber (2001)
Ideal geometry (DNA, RNA) : Parkinson et al. (1996)
Validation Pipeline (wwPDB-VP) : 2.23.2

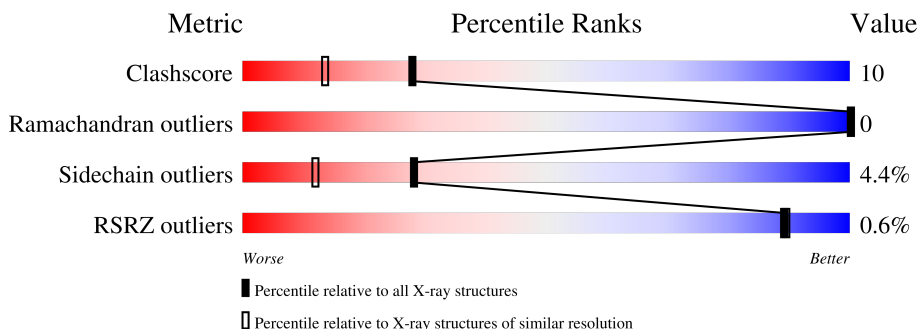
1 Overall quality at a glance

The following experimental techniques were used to determine the structure:

X-RAY DIFFRACTION

The reported resolution of this entry is 1.85 Å.

Percentile scores (ranging between 0-100) for global validation metrics of the entry are shown in the following graphic. The table shows the number of entries on which the scores are based.



Metric	Whole archive (#Entries)	Similar resolution (#Entries, resolution range(Å))
Clashscore	141614	2625 (1.86-1.86)
Ramachandran outliers	138981	2592 (1.86-1.86)
Sidechain outliers	138945	2592 (1.86-1.86)
RSRZ outliers	127900	2436 (1.86-1.86)

The table below summarises the geometric issues observed across the polymeric chains and their fit to the electron density. The red, orange, yellow and green segments of the lower bar indicate the fraction of residues that contain outliers for ≥ 3 , 2, 1 and 0 types of geometric quality criteria respectively. A grey segment represents the fraction of residues that are not modelled. The numeric value for each fraction is indicated below the corresponding segment, with a dot representing fractions $\leq 5\%$. The upper red bar (where present) indicates the fraction of residues that have poor fit to the electron density. The numeric value is given above the bar.

Mol	Chain	Length	Quality of chain
1	A	164	

2 Entry composition [i](#)

There are 5 unique types of molecules in this entry. The entry contains 1369 atoms, of which 0 are hydrogens and 0 are deuteriums.

In the tables below, the ZeroOcc column contains the number of atoms modelled with zero occupancy, the AltConf column contains the number of residues with at least one atom in alternate conformation and the Trace column contains the number of residues modelled with at most 2 atoms.

- Molecule 1 is a protein called Lysozyme.

Mol	Chain	Residues	Atoms					ZeroOcc	AltConf	Trace
1	A	162	Total	C	N	O	S	0	0	0
			1290	810	236	238	6			

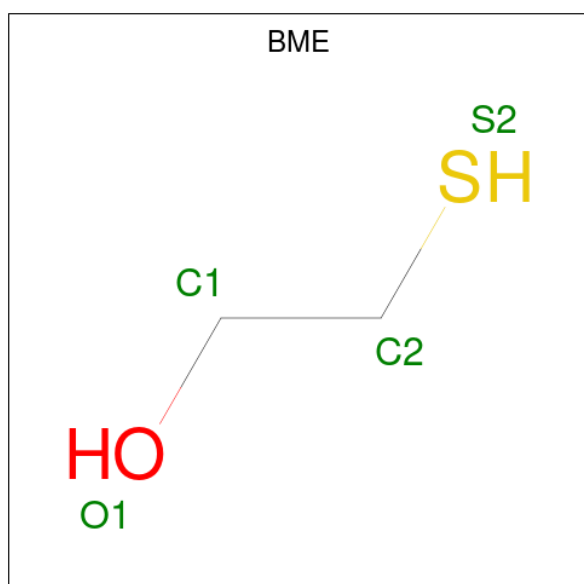
There are 2 discrepancies between the modelled and reference sequences:

Chain	Residue	Modelled	Actual	Comment	Reference
A	99	ALA	LEU	engineered mutation	UNP P00720
A	102	GLN	MET	engineered mutation	UNP P00720

- Molecule 2 is CHLORIDE ION (three-letter code: CL) (formula: Cl).

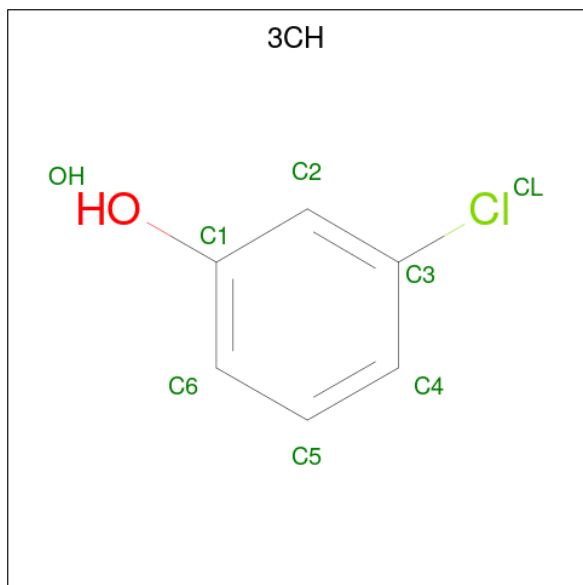
Mol	Chain	Residues	Atoms		ZeroOcc	AltConf
2	A	2	Total	Cl	0	0
			2	2		

- Molecule 3 is BETA-MERCAPTOETHANOL (three-letter code: BME) (formula: C₂H₆OS).



Mol	Chain	Residues	Atoms				ZeroOcc	AltConf
3	A	1	Total	C	O	S	0	0
			4	2	1	1		
3	A	1	Total	C	O	S	0	0
			4	2	1	1		

- Molecule 4 is 3-CHLOROPHENOL (three-letter code: 3CH) (formula: C₆H₅ClO).



Mol	Chain	Residues	Atoms				ZeroOcc	AltConf
4	A	1	Total	C	Cl	O	0	0
			8	6	1	1		

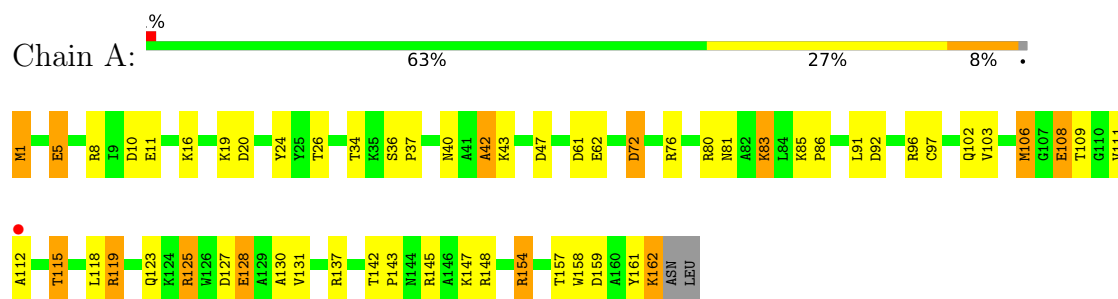
- Molecule 5 is water.

Mol	Chain	Residues	Atoms		ZeroOcc	AltConf
5	A	61	Total	O	0	0
			61	61		

3 Residue-property plots

These plots are drawn for all protein, RNA, DNA and oligosaccharide chains in the entry. The first graphic for a chain summarises the proportions of the various outlier classes displayed in the second graphic. The second graphic shows the sequence view annotated by issues in geometry and electron density. Residues are color-coded according to the number of geometric quality criteria for which they contain at least one outlier: green = 0, yellow = 1, orange = 2 and red = 3 or more. A red dot above a residue indicates a poor fit to the electron density ($RSRZ > 2$). Stretches of 2 or more consecutive residues without any outlier are shown as a green connector. Residues present in the sample, but not in the model, are shown in grey.

• Molecule 1: Lysozyme



4 Data and refinement statistics

Property	Value	Source
Space group	P 32 2 1	Depositor
Cell constants a, b, c, α , β , γ	60.82Å 60.82Å 97.39Å 90.00° 90.00° 120.00°	Depositor
Resolution (Å)	15.00 – 1.85 18.43 – 1.83	Depositor EDS
% Data completeness (in resolution range)	88.0 (15.00-1.85) 88.1 (18.43-1.83)	Depositor EDS
R_{merge}	0.05	Depositor
R_{sym}	(Not available)	Depositor
$\langle I/\sigma(I) \rangle$ ¹	1.27 (at 1.84Å)	Xtriage
Refinement program	TNT	Depositor
R, R_{free}	0.185 , (Not available) 0.174 , (Not available)	Depositor DCC
R_{free} test set	No test flags present.	wwPDB-VP
Wilson B-factor (Å ²)	19.0	Xtriage
Anisotropy	0.154	Xtriage
Bulk solvent k_{sol} (e/Å ³), B_{sol} (Å ²)	0.30 , 88.5	EDS
L-test for twinning ²	$\langle L \rangle = 0.48$, $\langle L^2 \rangle = 0.31$	Xtriage
Estimated twinning fraction	0.046 for -h,-k,l	Xtriage
F_o, F_c correlation	0.96	EDS
Total number of atoms	1369	wwPDB-VP
Average B, all atoms (Å ²)	27.0	wwPDB-VP

Xtriage's analysis on translational NCS is as follows: *The largest off-origin peak in the Patterson function is 6.81% of the height of the origin peak. No significant pseudotranslation is detected.*

¹Intensities estimated from amplitudes.

²Theoretical values of $\langle |L| \rangle$, $\langle L^2 \rangle$ for acentric reflections are 0.5, 0.333 respectively for untwinned datasets, and 0.375, 0.2 for perfectly twinned datasets.

5 Model quality

5.1 Standard geometry

Bond lengths and bond angles in the following residue types are not validated in this section: BME, CL, 3CH

The Z score for a bond length (or angle) is the number of standard deviations the observed value is removed from the expected value. A bond length (or angle) with $|Z| > 5$ is considered an outlier worth inspection. RMSZ is the root-mean-square of all Z scores of the bond lengths (or angles).

Mol	Chain	Bond lengths		Bond angles	
		RMSZ	$\# Z > 5$	RMSZ	$\# Z > 5$
1	A	1.10	5/1310 (0.4%)	1.99	49/1764 (2.8%)

All (5) bond length outliers are listed below:

Mol	Chain	Res	Type	Atoms	Z	Observed(Å)	Ideal(Å)
1	A	128	GLU	CD-OE2	6.28	1.32	1.25
1	A	108	GLU	CD-OE2	5.78	1.32	1.25
1	A	62	GLU	CD-OE2	5.42	1.31	1.25
1	A	11	GLU	CD-OE2	5.19	1.31	1.25
1	A	5	GLU	CD-OE2	5.06	1.31	1.25

All (49) bond angle outliers are listed below:

Mol	Chain	Res	Type	Atoms	Z	Observed(°)	Ideal(°)
1	A	80	ARG	NE-CZ-NH1	13.38	126.99	120.30
1	A	112	ALA	CB-CA-C	12.96	129.53	110.10
1	A	40	ASN	CB-CA-C	11.70	133.79	110.40
1	A	127	ASP	CB-CG-OD1	11.52	128.67	118.30
1	A	115	THR	CA-CB-CG2	-11.08	96.89	112.40
1	A	42	ALA	CB-CA-C	10.85	126.38	110.10
1	A	8	ARG	NE-CZ-NH1	10.77	125.69	120.30
1	A	109	THR	CA-CB-CG2	-10.42	97.81	112.40
1	A	127	ASP	CB-CG-OD2	-10.10	109.21	118.30
1	A	148	ARG	NE-CZ-NH1	9.86	125.23	120.30
1	A	103	VAL	CG1-CB-CG2	-9.74	95.31	110.90
1	A	47	ASP	CB-CG-OD1	9.43	126.79	118.30
1	A	159	ASP	CB-CG-OD1	8.68	126.11	118.30
1	A	161	TYR	CB-CG-CD1	-8.66	115.80	121.00
1	A	154	ARG	NE-CZ-NH1	8.64	124.62	120.30
1	A	47	ASP	CB-CG-OD2	-8.25	110.88	118.30

Continued on next page...

Continued from previous page...

Mol	Chain	Res	Type	Atoms	Z	Observed(°)	Ideal(°)
1	A	96	ARG	NE-CZ-NH1	-8.15	116.23	120.30
1	A	159	ASP	CB-CG-OD2	-7.96	111.14	118.30
1	A	61	ASP	CB-CG-OD2	-7.55	111.51	118.30
1	A	154	ARG	NE-CZ-NH2	-7.42	116.59	120.30
1	A	131	VAL	CG1-CB-CG2	-7.38	99.09	110.90
1	A	80	ARG	NE-CZ-NH2	-7.05	116.78	120.30
1	A	72	ASP	CB-CG-OD2	-6.94	112.05	118.30
1	A	111	VAL	CG1-CB-CG2	6.80	121.79	110.90
1	A	81	ASN	CB-CA-C	6.74	123.88	110.40
1	A	61	ASP	CB-CG-OD1	6.62	124.25	118.30
1	A	162	LYS	CB-CA-C	6.56	123.51	110.40
1	A	26	THR	CA-CB-CG2	6.48	121.47	112.40
1	A	115	THR	CB-CA-C	-6.37	94.39	111.60
1	A	142	THR	CA-CB-CG2	-6.37	103.48	112.40
1	A	20	ASP	CB-CG-OD1	6.32	123.99	118.30
1	A	1	MET	CB-CA-C	6.27	122.94	110.40
1	A	108	GLU	CB-CA-C	6.01	122.43	110.40
1	A	8	ARG	NE-CZ-NH2	-6.01	117.30	120.30
1	A	137	ARG	NE-CZ-NH1	5.91	123.25	120.30
1	A	19	LYS	N-CA-CB	5.90	121.22	110.60
1	A	137	ARG	NE-CZ-NH2	-5.69	117.46	120.30
1	A	24	TYR	CB-CA-C	-5.64	99.11	110.40
1	A	80	ARG	CD-NE-CZ	5.62	131.46	123.60
1	A	157	THR	CB-CA-C	-5.59	96.51	111.60
1	A	10	ASP	CB-CG-OD1	5.54	123.29	118.30
1	A	92	ASP	CB-CG-OD1	5.50	123.25	118.30
1	A	145	ARG	CD-NE-CZ	-5.49	115.92	123.60
1	A	106	MET	CA-CB-CG	5.44	122.55	113.30
1	A	91	LEU	CB-CA-C	-5.41	99.91	110.20
1	A	125	ARG	NE-CZ-NH1	5.35	122.97	120.30
1	A	97	CYS	CA-CB-SG	-5.32	104.43	114.00
1	A	83	LYS	CB-CA-C	5.27	120.94	110.40
1	A	148	ARG	NH1-CZ-NH2	-5.26	113.61	119.40

There are no chirality outliers.

There are no planarity outliers.

5.2 Too-close contacts

In the following table, the Non-H and H(model) columns list the number of non-hydrogen atoms and hydrogen atoms in the chain respectively. The H(added) column lists the number of hydrogen

atoms added and optimized by MolProbity. The Clashes column lists the number of clashes within the asymmetric unit, whereas Symm-Clashes lists symmetry-related clashes.

Mol	Chain	Non-H	H(model)	H(added)	Clashes	Symm-Clashes
1	A	1290	0	1310	26	0
2	A	2	0	0	0	0
3	A	8	0	12	3	0
4	A	8	0	5	0	0
5	A	61	0	0	1	0
All	All	1369	0	1327	26	0

The all-atom clashscore is defined as the number of clashes found per 1000 atoms (including hydrogen atoms). The all-atom clashscore for this structure is 10.

All (26) close contacts within the same asymmetric unit are listed below, sorted by their clash magnitude.

Atom-1	Atom-2	Interatomic distance (Å)	Clash overlap (Å)
1:A:102:GLN:CG	1:A:106:MET:HE2	2.04	0.87
1:A:102:GLN:HG2	1:A:106:MET:HE2	1.65	0.75
1:A:85:LYS:HB3	1:A:86:PRO:HD3	1.74	0.70
1:A:143:PRO:O	1:A:147:LYS:HG3	1.93	0.68
1:A:76:ARG:HG3	3:A:169:BME:S2	2.34	0.66
1:A:1:MET:HA	1:A:5:GLU:OE1	1.95	0.66
1:A:115:THR:HA	1:A:118:LEU:HD12	1.81	0.62
1:A:115:THR:O	1:A:115:THR:HG22	1.99	0.61
1:A:128:GLU:HG3	5:A:293:HOH:O	2.01	0.59
1:A:1:MET:HG2	1:A:158:TRP:CD2	2.38	0.58
1:A:34:THR:HG22	1:A:42:ALA:HB2	1.87	0.56
1:A:1:MET:HG2	1:A:158:TRP:CE3	2.45	0.52
1:A:34:THR:CG2	1:A:42:ALA:HB2	2.40	0.52
1:A:123:GLN:HB3	1:A:125:ARG:HH11	1.77	0.49
1:A:102:GLN:HE21	1:A:106:MET:CE	2.28	0.47
1:A:102:GLN:HE21	1:A:106:MET:HE1	1.80	0.46
1:A:130:ALA:HB3	1:A:154:ARG:NH2	2.31	0.46
1:A:72:ASP:OD1	3:A:169:BME:O1	2.26	0.45
1:A:85:LYS:N	1:A:86:PRO:CD	2.79	0.45
1:A:76:ARG:NE	3:A:169:BME:H12	2.33	0.44
1:A:102:GLN:NE2	1:A:106:MET:CE	2.80	0.44
1:A:119:ARG:HD3	1:A:119:ARG:HA	1.74	0.43
1:A:85:LYS:N	1:A:86:PRO:HD2	2.35	0.42
1:A:102:GLN:HG3	1:A:106:MET:HE2	1.92	0.41
1:A:1:MET:HE2	1:A:1:MET:HB2	1.92	0.41
1:A:36:SER:HA	1:A:37:PRO:HD3	1.84	0.41

There are no symmetry-related clashes.

5.3 Torsion angles [i](#)

5.3.1 Protein backbone [i](#)

In the following table, the Percentiles column shows the percent Ramachandran outliers of the chain as a percentile score with respect to all X-ray entries followed by that with respect to entries of similar resolution.

The Analysed column shows the number of residues for which the backbone conformation was analysed, and the total number of residues.

Mol	Chain	Analysed	Favoured	Allowed	Outliers	Percentiles	
1	A	160/164 (98%)	158 (99%)	2 (1%)	0	100	100

There are no Ramachandran outliers to report.

5.3.2 Protein sidechains [i](#)

In the following table, the Percentiles column shows the percent sidechain outliers of the chain as a percentile score with respect to all X-ray entries followed by that with respect to entries of similar resolution.

The Analysed column shows the number of residues for which the sidechain conformation was analysed, and the total number of residues.

Mol	Chain	Analysed	Rotameric	Outliers	Percentiles	
1	A	135/137 (98%)	129 (96%)	6 (4%)	28	12

All (6) residues with a non-rotameric sidechain are listed below:

Mol	Chain	Res	Type
1	A	16	LYS
1	A	43	LYS
1	A	83	LYS
1	A	108	GLU
1	A	119	ARG
1	A	162	LYS

Sometimes sidechains can be flipped to improve hydrogen bonding and reduce clashes. All (1) such sidechains are listed below:

Mol	Chain	Res	Type
1	A	102	GLN

5.3.3 RNA [i](#)

There are no RNA molecules in this entry.

5.4 Non-standard residues in protein, DNA, RNA chains [i](#)

There are no non-standard protein/DNA/RNA residues in this entry.

5.5 Carbohydrates [i](#)

There are no monosaccharides in this entry.

5.6 Ligand geometry [i](#)

Of 5 ligands modelled in this entry, 2 are monoatomic - leaving 3 for Mogul analysis.

In the following table, the Counts columns list the number of bonds (or angles) for which Mogul statistics could be retrieved, the number of bonds (or angles) that are observed in the model and the number of bonds (or angles) that are defined in the Chemical Component Dictionary. The Link column lists molecule types, if any, to which the group is linked. The Z score for a bond length (or angle) is the number of standard deviations the observed value is removed from the expected value. A bond length (or angle) with $|Z| > 2$ is considered an outlier worth inspection. RMSZ is the root-mean-square of all Z scores of the bond lengths (or angles).

Mol	Type	Chain	Res	Link	Bond lengths			Bond angles		
					Counts	RMSZ	# $ Z > 2$	Counts	RMSZ	# $ Z > 2$
3	BME	A	169	-	3,3,3	0.52	0	1,2,2	0.30	0
4	3CH	A	401	-	8,8,8	6.06	1 (12%)	9,10,10	1.19	1 (11%)
3	BME	A	170	-	3,3,3	0.38	0	1,2,2	0.38	0

In the following table, the Chirals column lists the number of chiral outliers, the number of chiral centers analysed, the number of these observed in the model and the number defined in the Chemical Component Dictionary. Similar counts are reported in the Torsion and Rings columns. '-' means no outliers of that kind were identified.

Mol	Type	Chain	Res	Link	Chirals	Torsions	Rings
3	BME	A	169	-	-	0/1/1/1	-
4	3CH	A	401	-	-	-	0/1/1/1
3	BME	A	170	-	-	1/1/1/1	-

All (1) bond length outliers are listed below:

Mol	Chain	Res	Type	Atoms	Z	Observed(Å)	Ideal(Å)
4	A	401	3CH	C3-CL	-17.06	1.37	1.74

All (1) bond angle outliers are listed below:

Mol	Chain	Res	Type	Atoms	Z	Observed(°)	Ideal(°)
4	A	401	3CH	C6-C5-C4	2.80	124.22	120.25

There are no chirality outliers.

All (1) torsion outliers are listed below:

Mol	Chain	Res	Type	Atoms
3	A	170	BME	O1-C1-C2-S2

There are no ring outliers.

1 monomer is involved in 3 short contacts:

Mol	Chain	Res	Type	Clashes	Symm-Clashes
3	A	169	BME	3	0

5.7 Other polymers [i](#)

There are no such residues in this entry.

5.8 Polymer linkage issues [i](#)

There are no chain breaks in this entry.

6 Fit of model and data [i](#)

6.1 Protein, DNA and RNA chains [i](#)

In the following table, the column labelled ‘#RSRZ > 2’ contains the number (and percentage) of RSRZ outliers, followed by percent RSRZ outliers for the chain as percentile scores relative to all X-ray entries and entries of similar resolution. The OWAB column contains the minimum, median, 95th percentile and maximum values of the occupancy-weighted average B-factor per residue. The column labelled ‘Q < 0.9’ lists the number of (and percentage) of residues with an average occupancy less than 0.9.

Mol	Chain	Analysed	<RSRZ>	#RSRZ>2	OWAB(Å ²)	Q<0.9
1	A	162/164 (98%)	-0.88	1 (0%) 89 89	12, 21, 55, 86	0

All (1) RSRZ outliers are listed below:

Mol	Chain	Res	Type	RSRZ
1	A	112	ALA	2.1

6.2 Non-standard residues in protein, DNA, RNA chains [i](#)

There are no non-standard protein/DNA/RNA residues in this entry.

6.3 Carbohydrates [i](#)

There are no monosaccharides in this entry.

6.4 Ligands [i](#)

In the following table, the Atoms column lists the number of modelled atoms in the group and the number defined in the chemical component dictionary. The B-factors column lists the minimum, median, 95th percentile and maximum values of B factors of atoms in the group. The column labelled ‘Q < 0.9’ lists the number of atoms with occupancy less than 0.9.

Mol	Type	Chain	Res	Atoms	RSCC	RSR	B-factors(Å ²)	Q<0.9
3	BME	A	169	4/4	0.63	0.27	56,69,83,85	0
3	BME	A	170	4/4	0.86	0.19	34,47,70,72	0
4	3CH	A	401	8/8	0.96	0.09	20,31,41,46	0
2	CL	A	173	1/1	0.97	0.06	45,45,45,45	0
2	CL	A	178	1/1	0.98	0.06	46,46,46,46	0

6.5 Other polymers [i](#)

There are no such residues in this entry.