



Full wwPDB X-ray Structure Validation Report ⓘ

Aug 10, 2020 – 01:31 PM BST

PDB ID : 1LOF
Title : X-RAY STRUCTURE OF A BIANENNARY OCTASACCHARIDE-LECT
IN COMPLEX AT 2.3 ANGSTROMS RESOLUTION
Authors : Bourne, Y.; Cambillau, C.
Deposited on : 1993-01-27
Resolution : 2.30 Å(reported)

This is a Full wwPDB X-ray Structure Validation Report for a publicly released PDB entry.

We welcome your comments at validation@mail.wwpdb.org

A user guide is available at

<https://www.wwpdb.org/validation/2017/XrayValidationReportHelp>

with specific help available everywhere you see the ⓘ symbol.

The following versions of software and data (see [references ⓘ](#)) were used in the production of this report:

MolProbity : 4.02b-467
Mogul : 1.8.5 (274361), CSD as541be (2020)
Xtriage (Phenix) : 1.13
EDS : 2.13.1
Percentile statistics : 20191225.v01 (using entries in the PDB archive December 25th 2019)
Refmac : 5.8.0158
CCP4 : 7.0.044 (Gargrove)
Ideal geometry (proteins) : Engh & Huber (2001)
Ideal geometry (DNA, RNA) : Parkinson et al. (1996)
Validation Pipeline (wwPDB-VP) : 2.13.1

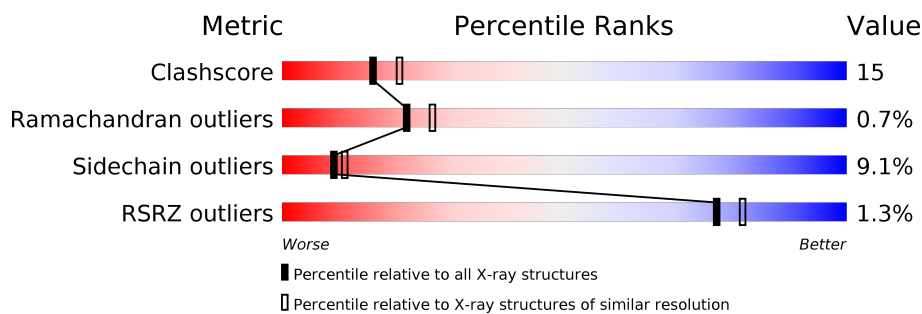
1 Overall quality at a glance

The following experimental techniques were used to determine the structure:

X-RAY DIFFRACTION

The reported resolution of this entry is 2.30 Å.

Percentile scores (ranging between 0-100) for global validation metrics of the entry are shown in the following graphic. The table shows the number of entries on which the scores are based.



Metric	Whole archive (#Entries)	Similar resolution (#Entries, resolution range(Å))
Clashscore	141614	5643 (2.30-2.30)
Ramachandran outliers	138981	5575 (2.30-2.30)
Sidechain outliers	138945	5575 (2.30-2.30)
RSRZ outliers	127900	4938 (2.30-2.30)

The table below summarises the geometric issues observed across the polymeric chains and their fit to the electron density. The red, orange, yellow and green segments on the lower bar indicate the fraction of residues that contain outliers for ≥ 3 , 2, 1 and 0 types of geometric quality criteria respectively. A grey segment represents the fraction of residues that are not modelled. The numeric value for each fraction is indicated below the corresponding segment, with a dot representing fractions $\leq 5\%$. The upper red bar (where present) indicates the fraction of residues that have poor fit to the electron density. The numeric value is given above the bar.

Mol	Chain	Length	Quality of chain
1	A	181	<div> <div>68%</div> <div>25%</div> <div>6%</div> <div>•</div> </div>
2	B	52	<div> <div>58%</div> <div>31%</div> <div>10%</div> <div>•</div> </div>
3	C	181	<div> <div>72%</div> <div>23%</div> <div>•</div> <div>•</div> </div>
4	D	52	<div> <div>65%</div> <div>31%</div> <div>•</div> </div>
5	E	8	<div> <div>13%</div> <div>88%</div> </div>
6	F	3	<div> <div>100%</div> </div>

The following table lists non-polymeric compounds, carbohydrate monomers and non-standard

residues in protein, DNA, RNA chains that are outliers for geometric or electron-density-fit criteria:

Mol	Type	Chain	Res	Chirality	Geometry	Clashes	Electron density
5	NAG	E	7	-	-	X	-
5	GAL	E	8	-	-	X	-

2 Entry composition

There are 9 unique types of molecules in this entry. The entry contains 3969 atoms, of which 0 are hydrogens and 0 are deuteriums.

In the tables below, the ZeroOcc column contains the number of atoms modelled with zero occupancy, the AltConf column contains the number of residues with at least one atom in alternate conformation and the Trace column contains the number of residues modelled with at most 2 atoms.

- Molecule 1 is a protein called LEGUME ISOLECTIN I (ALPHA CHAIN).

Mol	Chain	Residues	Atoms				ZeroOcc	AltConf	Trace
1	A	181	Total	C	N	O	0	0	0
			1406	894	232	280			

There is a discrepancy between the modelled and reference sequences:

Chain	Residue	Modelled	Actual	Comment	Reference
A	153	ALA	LYS	conflict	UNP P04122

- Molecule 2 is a protein called LEGUME ISOLECTIN I (BETA CHAIN).

Mol	Chain	Residues	Atoms				ZeroOcc	AltConf	Trace
2	B	47	Total	C	N	O	0	0	0
			381	251	58	72			

There is a discrepancy between the modelled and reference sequences:

Chain	Residue	Modelled	Actual	Comment	Reference
B	41	TYR	PHE	conflict	UNP P12306

- Molecule 3 is a protein called LEGUME ISOLECTIN I (ALPHA CHAIN).

Mol	Chain	Residues	Atoms				ZeroOcc	AltConf	Trace
3	C	180	Total	C	N	O	0	0	0
			1401	893	231	277			

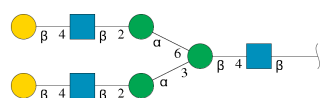
- Molecule 4 is a protein called LEGUME ISOLECTIN I (BETA CHAIN).

Mol	Chain	Residues	Atoms				ZeroOcc	AltConf	Trace
4	D	52	Total	C	N	O	0	0	0
			413	267	64	82			

There are 2 discrepancies between the modelled and reference sequences:

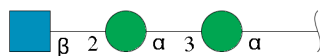
Chain	Residue	Modelled	Actual	Comment	Reference
D	41	TYR	PHE	conflict	UNP P12306
D	?	-	SER	deletion	UNP P12306

- Molecule 5 is an oligosaccharide called beta-D-galactopyranose-(1-4)-2-acetamido-2-deoxy-beta-D-glucopyranose-(1-2)-alpha-D-mannopyranose-(1-3)-[beta-D-galactopyranose-(1-4)-2-acetamido-2-deoxy-beta-D-glucopyranose-(1-2)-alpha-D-mannopyranose-(1-6)]beta-D-mannopyranose-(1-4)-2-acetamido-2-deoxy-beta-D-glucopyranose.



Mol	Chain	Residues	Atoms				ZeroOcc	AltConf	Trace
5	E	8	Total	C	N	O	0	0	0
			98	54	3	41			

- Molecule 6 is an oligosaccharide called 2-acetamido-2-deoxy-beta-D-glucopyranose-(1-2)-alpha-D-mannopyranose-(1-3)-alpha-D-mannopyranose.



Mol	Chain	Residues	Atoms				ZeroOcc	AltConf	Trace
6	F	3	Total	C	N	O	0	0	0
			36	20	1	15			

- Molecule 7 is CALCIUM ION (three-letter code: CA) (formula: Ca).

Mol	Chain	Residues	Atoms		ZeroOcc	AltConf
7	A	1	Total	Ca	0	0
			1	1		
7	C	1	Total	Ca	0	0
			1	1		

- Molecule 8 is MANGANESE (II) ION (three-letter code: MN) (formula: Mn).

Mol	Chain	Residues	Atoms		ZeroOcc	AltConf
8	A	1	Total	Mn	0	0
			1	1		

Continued on next page...

Continued from previous page...

Mol	Chain	Residues	Atoms		ZeroOcc	AltConf
8	C	1	Total 1	Mn 1	0	0

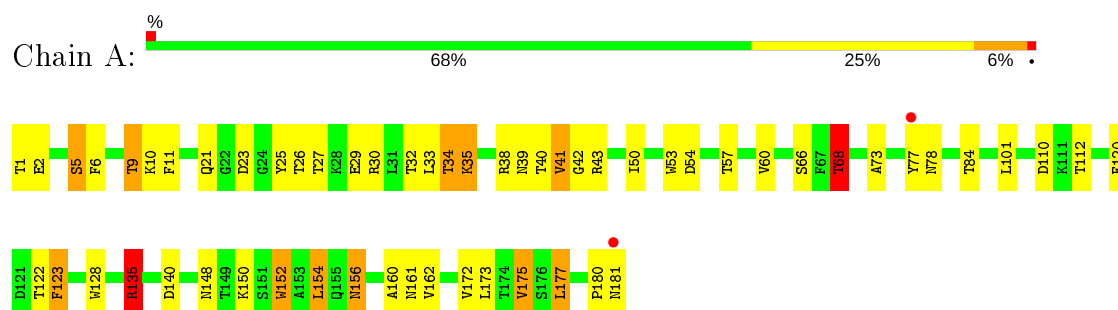
- Molecule 9 is water.

Mol	Chain	Residues	Atoms		ZeroOcc	AltConf
9	A	99	Total 99	O 99	0	0
9	B	15	Total 15	O 15	0	0
9	C	97	Total 97	O 97	0	0
9	D	19	Total 19	O 19	0	0

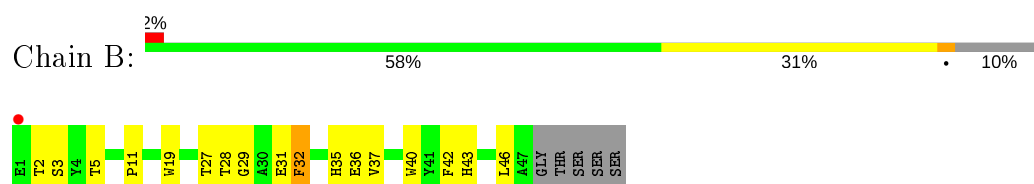
3 Residue-property plots

These plots are drawn for all protein, RNA, DNA and oligosaccharide chains in the entry. The first graphic for a chain summarises the proportions of the various outlier classes displayed in the second graphic. The second graphic shows the sequence view annotated by issues in geometry and electron density. Residues are color-coded according to the number of geometric quality criteria for which they contain at least one outlier: green = 0, yellow = 1, orange = 2 and red = 3 or more. A red dot above a residue indicates a poor fit to the electron density ($RSRZ > 2$). Stretches of 2 or more consecutive residues without any outlier are shown as a green connector. Residues present in the sample, but not in the model, are shown in grey.

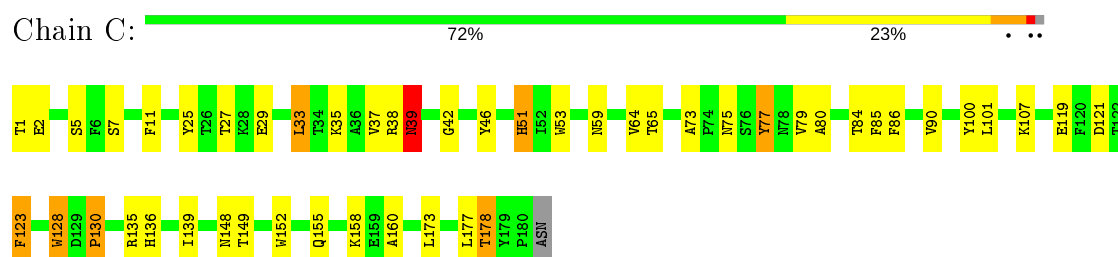
- Molecule 1: LEGUME ISOLECTIN I (ALPHA CHAIN)



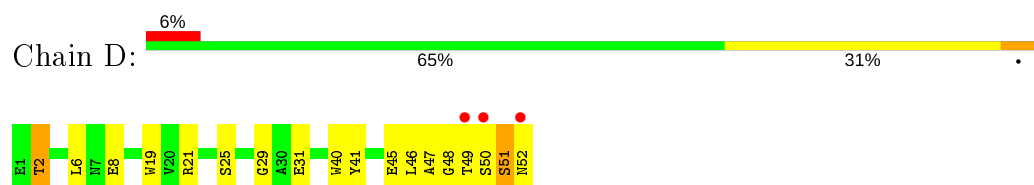
- Molecule 2: LEGUME ISOLECTIN I (BETA CHAIN)



- Molecule 3: LEGUME ISOLECTIN I (ALPHA CHAIN)



- Molecule 4: LEGUME ISOLECTIN I (BETA CHAIN)



- Molecule 5: beta-D-galactopyranose-(1-4)-2-acetamido-2-deoxy-beta-D-glucopyranose-(1-2)-alpha-D-mannopyranose-(1-3)-[beta-D-galactopyranose-(1-4)-2-acetamido-2-deoxy-beta-D-glucopyra

nose-(1-2)-alpha-D-mannopyranose-(1-6)]beta-D-mannopyranose-(1-4)-2-acetamido-2-deoxy-beta-D-glucopyranose

Chain E:  13% 88%

MAN1	MAN2	MAN3	MAN4	MAN5	MAN6	MAN7	MAN8
------	------	------	------	------	------	------	------

- Molecule 6: 2-acetamido-2-deoxy-beta-D-glucopyranose-(1-2)-alpha-D-mannopyranose-(1-3)-alpha-D-mannopyranose

Chain F:  100%

MAN1	MAN2	MAN3
------	------	------

4 Data and refinement statistics

Property	Value	Source
Space group	C 1 2 1	Depositor
Cell constants a, b, c, α , β , γ	78.30 Å 75.40 Å 103.90 Å 90.00° 92.00° 90.00°	Depositor
Resolution (Å)	8.00 – 2.30 7.99 – 2.30	Depositor EDS
% Data completeness (in resolution range)	(Not available) (8.00-2.30) 85.3 (7.99-2.30)	Depositor EDS
R_{merge}	(Not available)	Depositor
R_{sym}	(Not available)	Depositor
$\langle I/\sigma(I) \rangle$ ¹	1.95 (at 2.30 Å)	Xtriage
Refinement program	X-PLOR	Depositor
R, R_{free}	0.190 , (Not available) 0.200 , (Not available)	Depositor DCC
R_{free} test set	No test flags present.	wwPDB-VP
Wilson B-factor (Å ²)	32.5	Xtriage
Anisotropy	0.309	Xtriage
Bulk solvent k_{sol} (e/Å ³), B_{sol} (Å ²)	0.32 , 105.9	EDS
L-test for twinning ²	$\langle L \rangle = 0.49$, $\langle L^2 \rangle = 0.32$	Xtriage
Estimated twinning fraction	0.023 for k,h,-l 0.021 for -k,-h,-l 0.021 for -h,-k,l	Xtriage
F_o, F_c correlation	0.95	EDS
Total number of atoms	3969	wwPDB-VP
Average B, all atoms (Å ²)	34.0	wwPDB-VP

Xtriage's analysis on translational NCS is as follows: *The largest off-origin peak in the Patterson function is 6.35% of the height of the origin peak. No significant pseudotranslation is detected.*

¹ Intensities estimated from amplitudes.

² Theoretical values of $\langle |L| \rangle$, $\langle L^2 \rangle$ for acentric reflections are 0.5, 0.333 respectively for untwinned datasets, and 0.375, 0.2 for perfectly twinned datasets.

5 Model quality

5.1 Standard geometry

Bond lengths and bond angles in the following residue types are not validated in this section: BMA, NAG, CA, MN, GAL, MAN

The Z score for a bond length (or angle) is the number of standard deviations the observed value is removed from the expected value. A bond length (or angle) with $|Z| > 5$ is considered an outlier worth inspection. RMSZ is the root-mean-square of all Z scores of the bond lengths (or angles).

Mol	Chain	Bond lengths		Bond angles	
		RMSZ	$\# Z > 5$	RMSZ	$\# Z > 5$
1	A	0.92	1/1440 (0.1%)	1.63	24/1965 (1.2%)
2	B	1.06	0/394	1.64	5/539 (0.9%)
3	C	0.95	0/1435	1.65	19/1958 (1.0%)
4	D	1.12	0/426	1.71	8/581 (1.4%)
All	All	0.97	1/3695 (0.0%)	1.65	56/5043 (1.1%)

All (1) bond length outliers are listed below:

Mol	Chain	Res	Type	Atoms	Z	Observed(Å)	Ideal(Å)
1	A	68	THR	CA-CB	5.46	1.67	1.53

All (56) bond angle outliers are listed below:

Mol	Chain	Res	Type	Atoms	Z	Observed(°)	Ideal(°)
1	A	172	VAL	CG1-CB-CG2	-10.28	94.45	110.90
3	C	53	TRP	CD1-CG-CD2	9.37	113.80	106.30
3	C	152	TRP	CD1-CG-CD2	9.08	113.56	106.30
1	A	128	TRP	CE2-CD2-CG	-8.81	100.25	107.30
1	A	128	TRP	CD1-CG-CD2	8.71	113.27	106.30
4	D	19	TRP	CE2-CD2-CG	-8.41	100.57	107.30
3	C	152	TRP	CE2-CD2-CG	-8.26	100.69	107.30
3	C	77	TYR	CB-CG-CD2	-7.92	116.25	121.00
3	C	128	TRP	CD1-CG-CD2	7.88	112.61	106.30
1	A	53	TRP	CD1-CG-CD2	7.79	112.53	106.30
1	A	60	VAL	CG1-CB-CG2	-7.53	98.85	110.90
3	C	53	TRP	CE2-CD2-CG	-7.36	101.41	107.30
3	C	128	TRP	CE2-CD2-CG	-7.35	101.42	107.30
4	D	21	ARG	NE-CZ-NH1	7.31	123.95	120.30
4	D	19	TRP	CD1-CG-CD2	7.16	112.03	106.30
2	B	19	TRP	CE2-CD2-CG	-6.88	101.79	107.30

Continued on next page...

Continued from previous page...

Mol	Chain	Res	Type	Atoms	Z	Observed(°)	Ideal(°)
1	A	177	LEU	CA-CB-CG	6.85	131.04	115.30
4	D	40	TRP	CD1-CG-CD2	6.67	111.64	106.30
1	A	120	PHE	N-CA-C	-6.63	93.08	111.00
1	A	152	TRP	CD1-CG-CD2	6.55	111.54	106.30
1	A	53	TRP	CE2-CD2-CG	-6.47	102.12	107.30
1	A	123	PHE	CA-C-N	-6.46	102.98	117.20
1	A	135	ARG	NE-CZ-NH1	6.10	123.35	120.30
3	C	90	VAL	CG1-CB-CG2	-6.10	101.14	110.90
1	A	152	TRP	CE2-CD2-CG	-5.99	102.51	107.30
3	C	46	TYR	CB-CG-CD1	-5.96	117.42	121.00
3	C	53	TRP	CG-CD2-CE3	5.92	139.23	133.90
1	A	128	TRP	CG-CD2-CE3	5.86	139.18	133.90
2	B	19	TRP	CD1-CG-CD2	5.83	110.97	106.30
1	A	135	ARG	NE-CZ-NH2	-5.78	117.41	120.30
4	D	40	TRP	CE2-CD2-CG	-5.70	102.74	107.30
1	A	54	ASP	CB-CG-OD1	5.67	123.40	118.30
3	C	53	TRP	CG-CD1-NE1	-5.64	104.46	110.10
1	A	123	PHE	O-C-N	5.64	131.72	122.70
1	A	135	ARG	O-C-N	-5.62	113.70	122.70
1	A	140	ASP	CB-CG-OD1	5.54	123.28	118.30
1	A	154	LEU	CA-CB-CG	5.50	127.96	115.30
3	C	152	TRP	CG-CD1-NE1	-5.49	104.61	110.10
1	A	53	TRP	CG-CD1-NE1	-5.48	104.62	110.10
4	D	19	TRP	CG-CD2-CE3	5.44	138.79	133.90
1	A	10	LYS	N-CA-C	-5.39	96.45	111.00
2	B	37	VAL	CG1-CB-CG2	-5.34	102.36	110.90
4	D	21	ARG	NE-CZ-NH2	-5.34	117.63	120.30
2	B	40	TRP	CE2-CD2-CG	-5.31	103.05	107.30
1	A	9	THR	N-CA-CB	-5.29	100.25	110.30
2	B	19	TRP	CG-CD2-CE3	5.29	138.66	133.90
3	C	100	TYR	CB-CG-CD2	-5.25	117.85	121.00
3	C	152	TRP	CG-CD2-CE3	5.23	138.61	133.90
3	C	85	PHE	CB-CG-CD1	-5.21	117.16	120.80
1	A	41	VAL	CG1-CB-CG2	-5.18	102.61	110.90
3	C	39	ASN	N-CA-C	5.18	124.99	111.00
3	C	128	TRP	CG-CD2-CE3	5.17	138.55	133.90
4	D	49	THR	CA-CB-CG2	5.09	119.52	112.40
3	C	135	ARG	NE-CZ-NH2	-5.04	117.78	120.30
1	A	57	THR	CA-C-N	5.03	126.25	116.20
3	C	123	PHE	CA-C-N	-5.02	106.16	117.20

There are no chirality outliers.

There are no planarity outliers.

5.2 Too-close contacts

In the following table, the Non-H and H(model) columns list the number of non-hydrogen atoms and hydrogen atoms in the chain respectively. The H(added) column lists the number of hydrogen atoms added and optimized by MolProbity. The Clashes column lists the number of clashes within the asymmetric unit, whereas Symm-Clashes lists symmetry related clashes.

Mol	Chain	Non-H	H(model)	H(added)	Clashes	Symm-Clashes
1	A	1406	0	1352	33	0
2	B	381	0	357	16	0
3	C	1401	0	1354	36	0
4	D	413	0	383	14	0
5	E	98	0	84	19	0
6	F	36	0	31	8	0
7	A	1	0	0	0	0
7	C	1	0	0	0	0
8	A	1	0	0	0	0
8	C	1	0	0	0	0
9	A	99	0	0	12	0
9	B	15	0	0	1	0
9	C	97	0	0	7	0
9	D	19	0	0	1	0
All	All	3969	0	3561	92	0

The all-atom clashscore is defined as the number of clashes found per 1000 atoms (including hydrogen atoms). The all-atom clashscore for this structure is 15.

All (92) close contacts within the same asymmetric unit are listed below, sorted by their clash magnitude.

Atom-1	Atom-2	Interatomic distance (Å)	Clash overlap (Å)
5:E:7:NAG:C1	5:E:7:NAG:O7	2.11	0.99
3:C:39:ASN:HD21	6:F:3:NAG:H3	1.29	0.96
5:E:7:NAG:C4	5:E:8:GAL:C1	2.45	0.95
1:A:122:THR:HA	1:A:135:ARG:HG3	1.54	0.87
9:A:851:HOH:O	5:E:5:GAL:H61	1.74	0.86
9:A:809:HOH:O	5:E:8:GAL:H2	1.80	0.81
3:C:123:PHE:HA	9:C:676:HOH:O	1.88	0.73
5:E:6:MAN:C1	5:E:7:NAG:O7	2.37	0.72
9:A:847:HOH:O	5:E:8:GAL:H4	1.90	0.72
3:C:73:ALA:HB2	3:C:79:VAL:HG13	1.73	0.71

Continued on next page...

Continued from previous page...

Atom-1	Atom-2	Interatomic distance (Å)	Clash overlap (Å)
3:C:39:ASN:HD21	6:F:3:NAG:C3	2.05	0.68
9:A:851:HOH:O	5:E:5:GAL:C6	2.35	0.67
5:E:7:NAG:H4	5:E:8:GAL:C1	2.24	0.67
1:A:35:LYS:HE2	1:A:35:LYS:HA	1.75	0.67
1:A:5:SER:OG	2:B:43:HIS:HD2	1.78	0.67
3:C:160:ALA:HB1	3:C:177:LEU:HD21	1.74	0.67
9:C:821:HOH:O	6:F:3:NAG:H5	1.94	0.66
1:A:73:ALA:H	1:A:156:ASN:HD21	1.44	0.64
3:C:11:PHE:O	3:C:29:GLU:HA	1.98	0.64
1:A:21:GLN:HE22	1:A:43:ARG:HH21	1.46	0.63
3:C:39:ASN:ND2	6:F:3:NAG:H5	2.13	0.62
9:A:835:HOH:O	5:E:2:BMA:H2	2.00	0.62
9:A:809:HOH:O	5:E:8:GAL:C2	2.45	0.61
1:A:41:VAL:HG22	2:B:27:THR:HG22	1.82	0.61
1:A:32:THR:HG22	2:B:36:GLU:HG2	1.85	0.59
1:A:77:TYR:O	5:E:8:GAL:O2	2.21	0.59
3:C:130:PRO:HG2	3:C:149:THR:HG21	1.86	0.57
1:A:123:PHE:CZ	5:E:7:NAG:H5	2.40	0.56
3:C:75:ASN:ND2	3:C:77:TYR:H	2.04	0.55
9:A:844:HOH:O	5:E:8:GAL:C1	2.54	0.55
3:C:107:LYS:HG3	3:C:128:TRP:HB3	1.90	0.54
9:C:798:HOH:O	4:D:45:GLU:HG2	2.08	0.53
1:A:73:ALA:H	1:A:156:ASN:ND2	2.07	0.53
3:C:59:ASN:HD22	4:D:47:ALA:HB3	1.74	0.53
3:C:35:LYS:HG2	9:C:665:HOH:O	2.08	0.53
1:A:123:PHE:CE1	5:E:7:NAG:H5	2.44	0.52
9:A:673:HOH:O	2:B:35:HIS:HE1	1.92	0.52
3:C:39:ASN:ND2	6:F:3:NAG:H3	2.11	0.52
3:C:160:ALA:HB1	3:C:177:LEU:CD2	2.41	0.51
5:E:2:BMA:H61	5:E:7:NAG:O7	2.10	0.51
5:E:1:NAG:H1	5:E:6:MAN:H5	1.93	0.51
3:C:75:ASN:HD22	3:C:77:TYR:H	1.56	0.50
1:A:34:THR:CG2	2:B:35:HIS:HD2	2.24	0.50
9:C:791:HOH:O	6:F:1:MAN:H5	2.11	0.50
3:C:84:THR:HB	4:D:25:SER:OG	2.11	0.50
1:A:1:THR:HA	2:B:46:LEU:O	2.11	0.50
3:C:59:ASN:HD22	4:D:48:GLY:N	2.10	0.50
3:C:39:ASN:HD22	6:F:3:NAG:H5	1.77	0.50
1:A:150:LYS:HD2	2:B:5:THR:O	2.13	0.49
1:A:73:ALA:N	1:A:156:ASN:HD21	2.09	0.49
1:A:66:SER:HA	1:A:162:VAL:O	2.13	0.48

Continued on next page...

Continued from previous page...

Atom-1	Atom-2	Interatomic distance (Å)	Clash overlap (Å)
3:C:136:HIS:CD2	9:C:684:HOH:O	2.66	0.48
3:C:84:THR:HG22	3:C:86:PHE:HD2	1.78	0.48
4:D:47:ALA:HB1	4:D:50:SER:H	1.78	0.47
1:A:110:ASP:OD1	1:A:112:THR:HB	2.15	0.47
1:A:21:GLN:HE21	1:A:43:ARG:HE	1.63	0.47
1:A:11:PHE:O	1:A:29:GLU:HA	2.14	0.47
3:C:51:HIS:CE1	9:D:658:HOH:O	2.68	0.47
1:A:68:THR:HA	1:A:160:ALA:O	2.15	0.46
1:A:78:ASN:HA	2:B:31:GLU:OE2	2.14	0.46
9:A:854:HOH:O	5:E:7:NAG:O3	2.21	0.46
3:C:148:ASN:ND2	4:D:6:LEU:HD11	2.30	0.46
9:A:673:HOH:O	2:B:35:HIS:CE1	2.68	0.46
3:C:155:GLN:OE1	3:C:158:LYS:HD3	2.16	0.46
1:A:26:THR:HG22	9:A:769:HOH:O	2.15	0.45
1:A:39:ASN:HA	2:B:28:THR:O	2.16	0.45
3:C:1:THR:HA	4:D:46:LEU:O	2.15	0.45
1:A:38:ARG:HB2	2:B:29:GLY:O	2.16	0.45
3:C:80:ALA:CB	4:D:31:GLU:HB3	2.47	0.45
3:C:33:LEU:O	3:C:42:GLY:HA3	2.17	0.45
1:A:161:ASN:HB3	9:A:750:HOH:O	2.16	0.45
2:B:31:GLU:OE1	5:E:7:NAG:H3	2.17	0.44
3:C:139:ILE:HD12	4:D:8:GLU:HB2	2.00	0.44
5:E:3:MAN:H2	5:E:4:NAG:H2	1.80	0.44
1:A:21:GLN:NE2	1:A:43:ARG:HE	2.15	0.44
3:C:119:GLU:OE1	3:C:121:ASP:HB2	2.18	0.44
3:C:25:TYR:HE2	3:C:27:THR:HG1	1.65	0.44
1:A:175:VAL:O	2:B:5:THR:HA	2.18	0.43
1:A:6:PHE:CE2	2:B:42:PHE:HB3	2.54	0.43
1:A:33:LEU:O	1:A:42:GLY:HA3	2.18	0.43
1:A:2:GLU:HA	3:C:7:SER:O	2.19	0.42
3:C:107:LYS:HD3	9:C:741:HOH:O	2.19	0.42
6:F:1:MAN:O4	6:F:2:MAN:H5	2.19	0.42
3:C:38:ARG:HG3	4:D:29:GLY:O	2.19	0.42
4:D:47:ALA:HB2	4:D:52:ASN:C	2.40	0.42
1:A:38:ARG:HB3	2:B:32:PHE:HD2	1.85	0.41
3:C:178:THR:HA	4:D:2:THR:O	2.20	0.41
1:A:34:THR:HG22	2:B:35:HIS:HD2	1.84	0.41
3:C:65:THR:HA	4:D:41:TYR:O	2.20	0.41
3:C:59:ASN:ND2	4:D:47:ALA:HB3	2.36	0.41
3:C:2:GLU:OE2	3:C:51:HIS:HD2	2.03	0.41
1:A:101:LEU:HB3	9:B:760:HOH:O	2.21	0.40

There are no symmetry-related clashes.

5.3 Torsion angles [i](#)

5.3.1 Protein backbone [i](#)

In the following table, the Percentiles column shows the percent Ramachandran outliers of the chain as a percentile score with respect to all X-ray entries followed by that with respect to entries of similar resolution.

The Analysed column shows the number of residues for which the backbone conformation was analysed, and the total number of residues.

Mol	Chain	Analysed	Favoured	Allowed	Outliers	Percentiles	
1	A	179/181 (99%)	172 (96%)	6 (3%)	1 (1%)	25	31
2	B	45/52 (86%)	41 (91%)	3 (7%)	1 (2%)	6	5
3	C	178/181 (98%)	170 (96%)	8 (4%)	0	100	100
4	D	50/52 (96%)	45 (90%)	4 (8%)	1 (2%)	7	6
All	All	452/466 (97%)	428 (95%)	21 (5%)	3 (1%)	22	26

All (3) Ramachandran outliers are listed below:

Mol	Chain	Res	Type
4	D	51	SER
2	B	11	PRO
1	A	180	PRO

5.3.2 Protein sidechains [i](#)

In the following table, the Percentiles column shows the percent sidechain outliers of the chain as a percentile score with respect to all X-ray entries followed by that with respect to entries of similar resolution.

The Analysed column shows the number of residues for which the sidechain conformation was analysed, and the total number of residues.

Mol	Chain	Analysed	Rotameric	Outliers	Percentiles	
1	A	155/155 (100%)	134 (86%)	21 (14%)	4	4
2	B	40/44 (91%)	37 (92%)	3 (8%)	13	17
3	C	155/156 (99%)	145 (94%)	10 (6%)	17	23
4	D	44/44 (100%)	42 (96%)	2 (4%)	27	39

Continued on next page...

Continued from previous page...

Mol	Chain	Analysed	Rotameric	Outliers	Percentiles
All	All	394/399 (99%)	358 (91%)	36 (9%)	9 11

All (36) residues with a non-rotameric sidechain are listed below:

Mol	Chain	Res	Type
1	A	5	SER
1	A	9	THR
1	A	23	ASP
1	A	25	TYR
1	A	27	THR
1	A	30	ARG
1	A	34	THR
1	A	35	LYS
1	A	40	THR
1	A	50	ILE
1	A	68	THR
1	A	84	THR
1	A	135	ARG
1	A	148	ASN
1	A	152	TRP
1	A	154	LEU
1	A	156	ASN
1	A	173	LEU
1	A	175	VAL
1	A	177	LEU
1	A	181	ASN
2	B	2	THR
2	B	3	SER
2	B	32	PHE
3	C	5	SER
3	C	33	LEU
3	C	37	VAL
3	C	39	ASN
3	C	51	HIS
3	C	64	VAL
3	C	101	LEU
3	C	130	PRO
3	C	173	LEU
3	C	178	THR
4	D	2	THR
4	D	51	SER

Some sidechains can be flipped to improve hydrogen bonding and reduce clashes. All (15) such sidechains are listed below:

Mol	Chain	Res	Type
1	A	21	GLN
1	A	51	HIS
1	A	148	ASN
1	A	155	GLN
1	A	156	ASN
2	B	7	ASN
2	B	35	HIS
2	B	43	HIS
3	C	39	ASN
3	C	51	HIS
3	C	59	ASN
3	C	75	ASN
3	C	78	ASN
3	C	142	ASN
3	C	161	ASN

5.3.3 RNA ⓘ

There are no RNA molecules in this entry.

5.4 Non-standard residues in protein, DNA, RNA chains ⓘ

There are no non-standard protein/DNA/RNA residues in this entry.

5.5 Carbohydrates ⓘ

11 monosaccharides are modelled in this entry.

In the following table, the Counts columns list the number of bonds (or angles) for which Mogul statistics could be retrieved, the number of bonds (or angles) that are observed in the model and the number of bonds (or angles) that are defined in the Chemical Component Dictionary. The Link column lists molecule types, if any, to which the group is linked. The Z score for a bond length (or angle) is the number of standard deviations the observed value is removed from the expected value. A bond length (or angle) with $|Z| > 2$ is considered an outlier worth inspection. RMSZ is the root-mean-square of all Z scores of the bond lengths (or angles).

Mol	Type	Chain	Res	Link	Bond lengths			Bond angles		
					Counts	RMSZ	$\# Z > 2$	Counts	RMSZ	$\# Z > 2$
5	NAG	E	1	5	15,15,15	1.18	2 (13%)	21,21,21	2.11	1 (4%)
5	BMA	E	2	5	11,11,12	1.14	0	15,15,17	1.68	3 (20%)

Mol	Type	Chain	Res	Link	Bond lengths			Bond angles		
					Counts	RMSZ	# Z > 2	Counts	RMSZ	# Z > 2
5	MAN	E	3	5	11,11,12	0.96	0	15,15,17	1.61	3 (20%)
5	NAG	E	4	5	14,14,15	0.93	1 (7%)	17,19,21	1.13	1 (5%)
5	GAL	E	5	5	11,11,12	0.70	0	15,15,17	1.17	0
5	MAN	E	6	5	11,11,12	0.63	0	15,15,17	1.60	3 (20%)
5	NAG	E	7	5	14,14,15	1.05	1 (7%)	17,19,21	1.70	1 (5%)
5	GAL	E	8	5	11,11,12	0.73	0	15,15,17	1.05	2 (13%)
6	MAN	F	1	6	11,11,12	0.97	0	15,15,17	2.31	4 (26%)
6	MAN	F	2	6	11,11,12	0.58	0	15,15,17	1.54	3 (20%)
6	NAG	F	3	6	14,14,15	0.58	0	17,19,21	1.65	4 (23%)

In the following table, the Chirals column lists the number of chiral outliers, the number of chiral centers analysed, the number of these observed in the model and the number defined in the Chemical Component Dictionary. Similar counts are reported in the Torsion and Rings columns. '-' means no outliers of that kind were identified.

Mol	Type	Chain	Res	Link	Chirals	Torsions	Rings
5	NAG	E	1	5	-	2/6/26/26	0/1/1/1
5	BMA	E	2	5	-	2/2/19/22	0/1/1/1
5	MAN	E	3	5	-	0/2/19/22	0/1/1/1
5	NAG	E	4	5	-	0/6/23/26	0/1/1/1
5	GAL	E	5	5	-	2/2/19/22	0/1/1/1
5	MAN	E	6	5	-	2/2/19/22	0/1/1/1
5	NAG	E	7	5	-	1/6/23/26	0/1/1/1
5	GAL	E	8	5	-	2/2/19/22	0/1/1/1
6	MAN	F	1	6	-	2/2/19/22	0/1/1/1
6	MAN	F	2	6	-	0/2/19/22	0/1/1/1
6	NAG	F	3	6	-	0/6/23/26	0/1/1/1

All (4) bond length outliers are listed below:

Mol	Chain	Res	Type	Atoms	Z	Observed(Å)	Ideal(Å)
5	E	1	NAG	O4-C4	2.66	1.49	1.43
5	E	7	NAG	O4-C4	2.54	1.49	1.43
5	E	1	NAG	C4-C5	2.46	1.58	1.53
5	E	4	NAG	C3-C2	-2.03	1.48	1.52

All (25) bond angle outliers are listed below:

Mol	Chain	Res	Type	Atoms	Z	Observed(°)	Ideal(°)
5	E	1	NAG	C1-C2-N2	-9.17	100.10	110.73
6	F	1	MAN	C6-C5-C4	-7.00	96.60	113.00
5	E	7	NAG	C1-C2-N2	-6.23	99.85	110.49
6	F	3	NAG	C6-C5-C4	-4.26	103.03	113.00
5	E	2	BMA	O3-C3-C2	4.10	117.86	109.99
6	F	2	MAN	C1-O5-C5	3.75	117.27	112.19
6	F	2	MAN	C6-C5-C4	-3.39	105.06	113.00
5	E	3	MAN	O2-C2-C1	3.33	115.97	109.15
5	E	3	MAN	C2-C3-C4	-3.31	105.16	110.89
6	F	1	MAN	O3-C3-C2	3.05	115.84	109.99
5	E	4	NAG	O4-C4-C3	-3.04	103.31	110.35
5	E	2	BMA	C6-C5-C4	2.72	119.39	113.00
6	F	3	NAG	C4-C3-C2	-2.72	107.03	111.02
6	F	1	MAN	C1-C2-C3	-2.67	106.39	109.67
5	E	6	MAN	C1-O5-C5	2.62	115.74	112.19
5	E	8	GAL	C1-C2-C3	-2.60	106.47	109.67
5	E	3	MAN	C1-O5-C5	2.49	115.56	112.19
5	E	6	MAN	O2-C2-C3	2.46	115.08	110.14
6	F	3	NAG	C2-N2-C7	-2.46	119.40	122.90
5	E	6	MAN	C1-C2-C3	-2.43	106.67	109.67
6	F	2	MAN	O5-C1-C2	-2.26	107.28	110.77
6	F	3	NAG	O3-C3-C2	2.13	113.87	109.47
6	F	1	MAN	O5-C1-C2	-2.10	107.52	110.77
5	E	2	BMA	O5-C1-C2	-2.09	107.54	110.77
5	E	8	GAL	C2-C3-C4	-2.01	107.41	110.89

There are no chirality outliers.

All (13) torsion outliers are listed below:

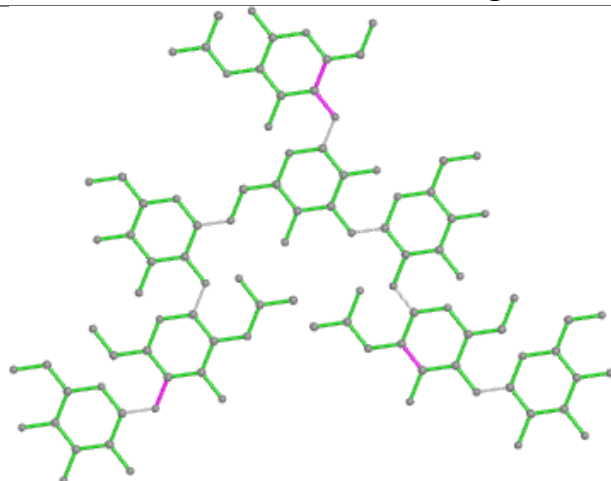
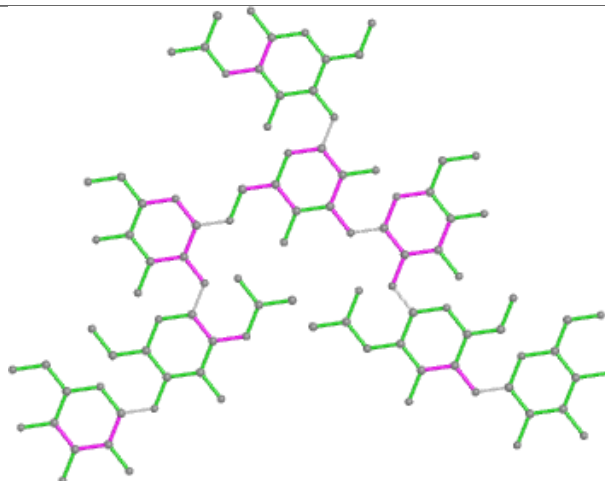
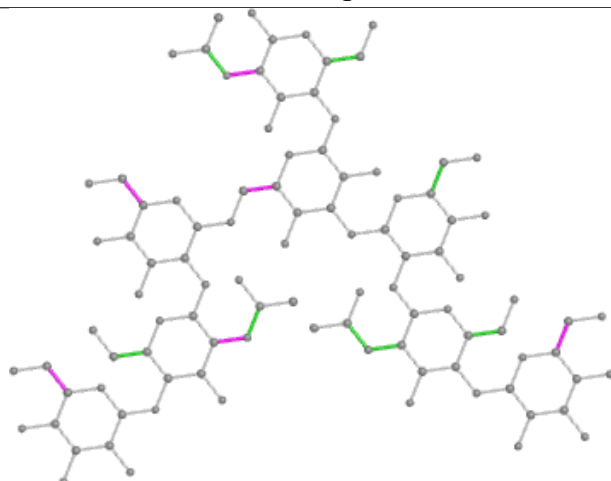
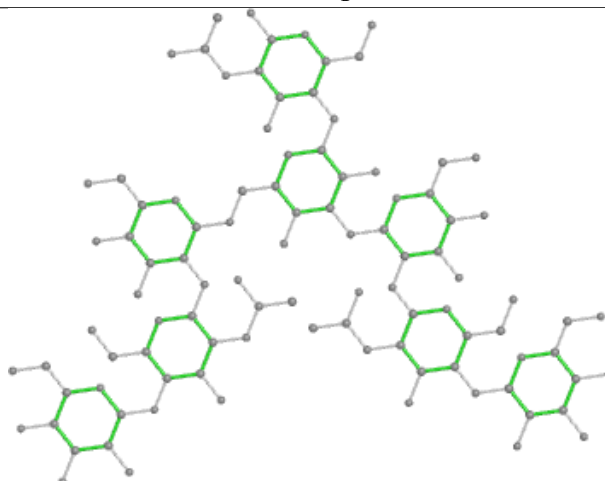
Mol	Chain	Res	Type	Atoms
5	E	7	NAG	C1-C2-N2-C7
5	E	1	NAG	C1-C2-N2-C7
5	E	6	MAN	O5-C5-C6-O6
6	F	1	MAN	O5-C5-C6-O6
5	E	6	MAN	C4-C5-C6-O6
6	F	1	MAN	C4-C5-C6-O6
5	E	5	GAL	O5-C5-C6-O6
5	E	2	BMA	O5-C5-C6-O6
5	E	8	GAL	O5-C5-C6-O6
5	E	8	GAL	C4-C5-C6-O6
5	E	5	GAL	C4-C5-C6-O6
5	E	2	BMA	C4-C5-C6-O6
5	E	1	NAG	C3-C2-N2-C7

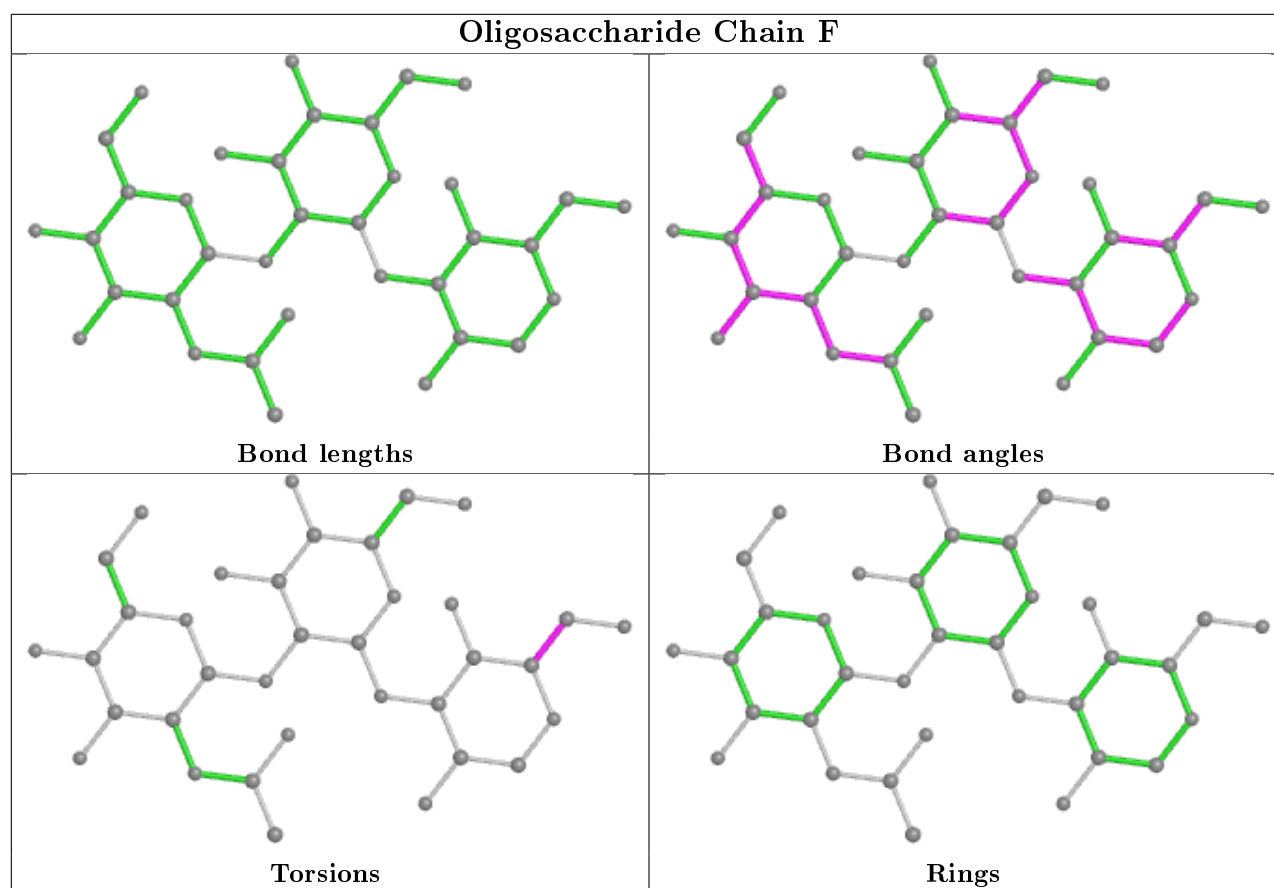
There are no ring outliers.

11 monomers are involved in 27 short contacts:

Mol	Chain	Res	Type	Clashes	Symm-Clashes
5	E	8	GAL	7	0
6	F	3	NAG	6	0
5	E	2	BMA	2	0
5	E	4	NAG	1	0
5	E	7	NAG	9	0
5	E	6	MAN	2	0
6	F	2	MAN	1	0
5	E	1	NAG	1	0
5	E	3	MAN	1	0
6	F	1	MAN	2	0
5	E	5	GAL	2	0

The following is a two-dimensional graphical depiction of Mogul quality analysis of bond lengths, bond angles, torsion angles, and ring geometry for oligosaccharide.

Oligosaccharide Chain E**Bond lengths****Bond angles****Torsions****Rings**



5.6 Ligand geometry [i](#)

Of 4 ligands modelled in this entry, 4 are monoatomic - leaving 0 for Mogul analysis.

There are no bond length outliers.

There are no bond angle outliers.

There are no chirality outliers.

There are no torsion outliers.

There are no ring outliers.

No monomer is involved in short contacts.

5.7 Other polymers [i](#)

There are no such residues in this entry.

5.8 Polymer linkage issues [i](#)

There are no chain breaks in this entry.

6 Fit of model and data [i](#)

6.1 Protein, DNA and RNA chains [i](#)

In the following table, the column labelled ‘#RSRZ> 2’ contains the number (and percentage) of RSRZ outliers, followed by percent RSRZ outliers for the chain as percentile scores relative to all X-ray entries and entries of similar resolution. The OWAB column contains the minimum, median, 95th percentile and maximum values of the occupancy-weighted average B-factor per residue. The column labelled ‘Q< 0.9’ lists the number of (and percentage) of residues with an average occupancy less than 0.9.

Mol	Chain	Analysed	<RSRZ>	#RSRZ>2	OWAB(Å ²)	Q<0.9
1	A	181/181 (100%)	-0.66	2 (1%) 80 85	13, 28, 50, 94	0
2	B	47/52 (90%)	-0.62	1 (2%) 63 70	16, 25, 48, 92	0
3	C	180/181 (99%)	-0.61	0 100 100	12, 28, 51, 65	0
4	D	52/52 (100%)	-0.28	3 (5%) 23 29	13, 26, 69, 93	0
All	All	460/466 (98%)	-0.60	6 (1%) 77 81	12, 28, 53, 94	0

All (6) RSRZ outliers are listed below:

Mol	Chain	Res	Type	RSRZ
4	D	52	ASN	6.9
4	D	49	THR	5.0
4	D	50	SER	3.1
2	B	1	GLU	2.7
1	A	77	TYR	2.3
1	A	181	ASN	2.0

6.2 Non-standard residues in protein, DNA, RNA chains [i](#)

There are no non-standard protein/DNA/RNA residues in this entry.

6.3 Carbohydrates [i](#)

In the following table, the Atoms column lists the number of modelled atoms in the group and the number defined in the chemical component dictionary. The B-factors column lists the minimum, median, 95th percentile and maximum values of B factors of atoms in the group. The column labelled ‘Q< 0.9’ lists the number of atoms with occupancy less than 0.9.

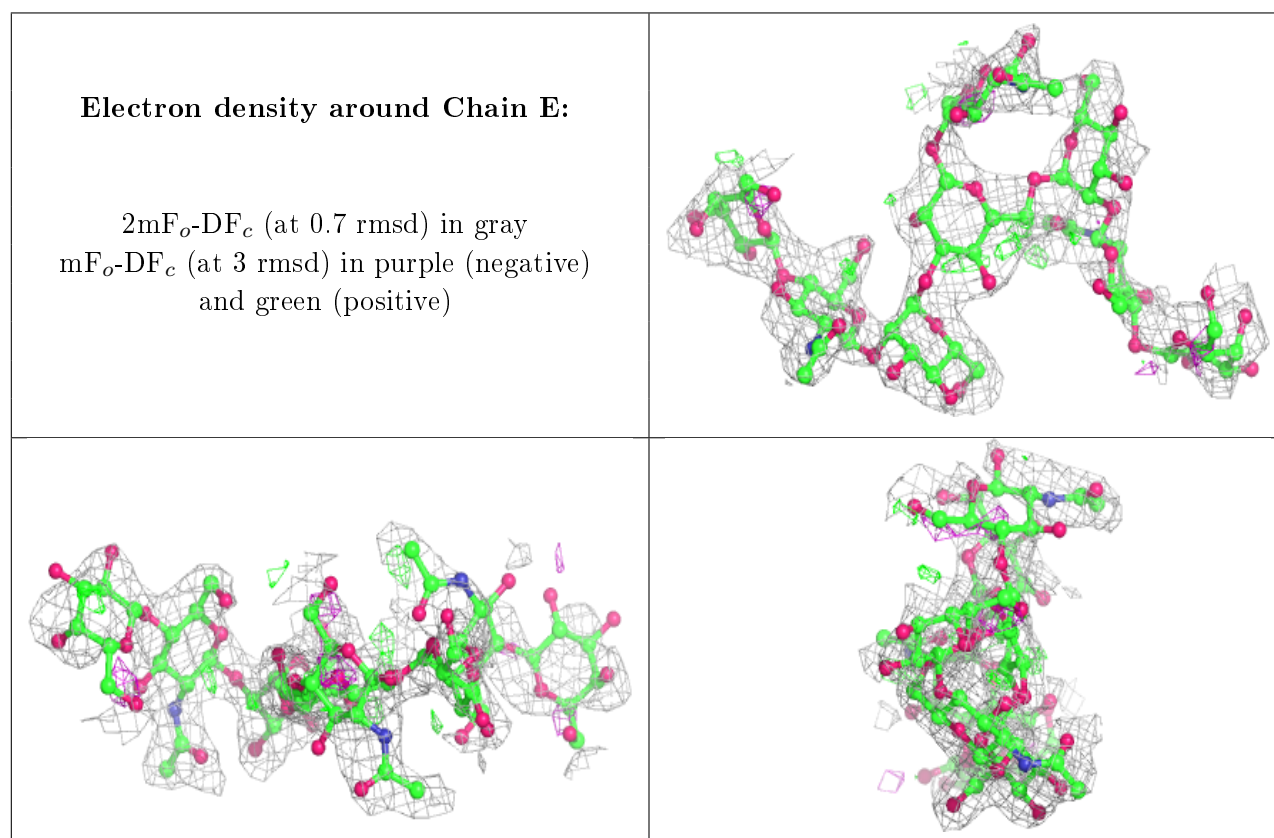
Mol	Type	Chain	Res	Atoms	RSCC	RSR	B-factors(Å ²)	Q<0.9
5	NAG	E	1	15/15	0.53	0.40	81,89,94,98	0

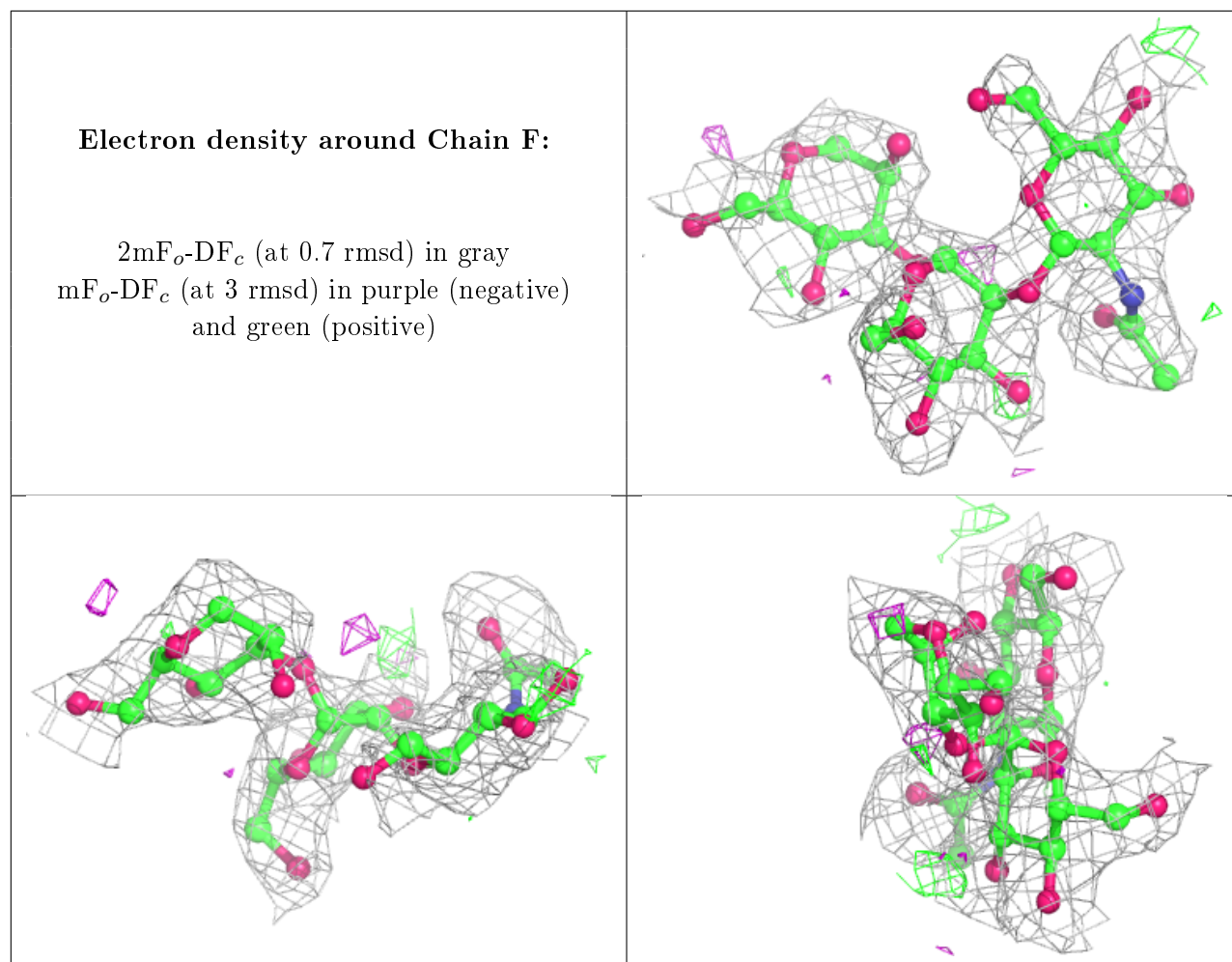
Continued on next page...

Continued from previous page...

Mol	Type	Chain	Res	Atoms	RSCC	RSR	B-factors(\AA^2)	Q<0.9
5	MAN	E	6	11/12	0.59	0.33	84,86,90,91	0
5	NAG	E	7	14/15	0.60	0.40	81,89,94,98	0
5	GAL	E	5	11/12	0.62	0.29	80,86,91,94	0
5	GAL	E	8	11/12	0.62	0.40	90,93,98,99	0
5	BMA	E	2	11/12	0.80	0.20	56,64,71,78	0
6	NAG	F	3	14/15	0.87	0.19	51,65,73,81	0
6	MAN	F	1	11/12	0.87	0.21	67,82,89,98	0
6	MAN	F	2	11/12	0.88	0.17	38,46,55,56	0
5	NAG	E	4	14/15	0.88	0.15	52,57,63,72	0
5	MAN	E	3	11/12	0.93	0.14	38,42,50,50	0

The following is a graphical depiction of the model fit to experimental electron density for oligosaccharide. Each fit is shown from different orientation to approximate a three-dimensional view.





6.4 Ligands [i](#)

In the following table, the Atoms column lists the number of modelled atoms in the group and the number defined in the chemical component dictionary. The B-factors column lists the minimum, median, 95th percentile and maximum values of B factors of atoms in the group. The column labelled 'Q< 0.9' lists the number of atoms with occupancy less than 0.9.

Mol	Type	Chain	Res	Atoms	RSCC	RSR	B-factors(Å ²)	Q<0.9
7	CA	A	227	1/1	0.56	0.25	34,34,34,34	0
8	MN	C	458	1/1	0.86	0.08	44,44,44,44	0
7	CA	C	457	1/1	0.88	0.26	32,32,32,32	0
8	MN	A	228	1/1	0.95	0.04	38,38,38,38	0

6.5 Other polymers [i](#)

There are no such residues in this entry.