



# Full wwPDB X-ray Structure Validation Report ⓘ

Aug 22, 2020 – 01:40 PM BST

PDB ID : 5LRT  
Title : Structure of the Deamidase-Depupylase Dop of the Prokaryotic Ubiquitin-like Modification Pathway in Complex with ADP and Phosphate  
Authors : Bolten, M.; Vahlensieck, C.; Lipp, C.; Leibundgut, M.; Ban, N.; Weber-Ban, E.  
Deposited on : 2016-08-19  
Resolution : 1.85 Å(reported)

This is a Full wwPDB X-ray Structure Validation Report for a publicly released PDB entry.

We welcome your comments at [validation@mail.wwpdb.org](mailto:validation@mail.wwpdb.org)

A user guide is available at

<https://www.wwpdb.org/validation/2017/XrayValidationReportHelp>

with specific help available everywhere you see the ⓘ symbol.

---

The following versions of software and data (see [references ⓘ](#)) were used in the production of this report:

MolProbity : 4.02b-467  
Mogul : 1.8.5 (274361), CSD as541be (2020)  
Xtriage (Phenix) : 1.13  
EDS : 2.13.1  
buster-report : 1.1.7 (2018)  
Percentile statistics : 20191225.v01 (using entries in the PDB archive December 25th 2019)  
Refmac : 5.8.0158  
CCP4 : 7.0.044 (Gargrove)  
Ideal geometry (proteins) : Engh & Huber (2001)  
Ideal geometry (DNA, RNA) : Parkinson et al. (1996)  
Validation Pipeline (wwPDB-VP) : 2.13.1

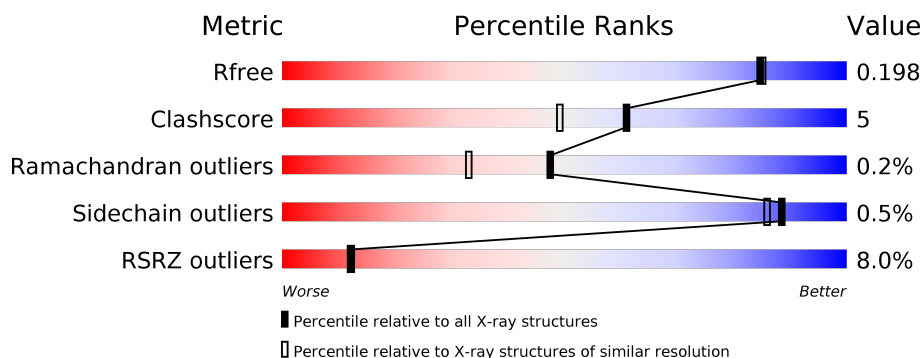
# 1 Overall quality at a glance

The following experimental techniques were used to determine the structure:

## *X-RAY DIFFRACTION*

The reported resolution of this entry is 1.85 Å.

Percentile scores (ranging between 0-100) for global validation metrics of the entry are shown in the following graphic. The table shows the number of entries on which the scores are based.



Metric	Whole archive (#Entries)	Similar resolution (#Entries, resolution range(Å))
$R_{free}$	130704	2469 (1.86-1.86)
Clashscore	141614	2625 (1.86-1.86)
Ramachandran outliers	138981	2592 (1.86-1.86)
Sidechain outliers	138945	2592 (1.86-1.86)
RSRZ outliers	127900	2436 (1.86-1.86)

The table below summarises the geometric issues observed across the polymeric chains and their fit to the electron density. The red, orange, yellow and green segments on the lower bar indicate the fraction of residues that contain outliers for  $\geq 3$ , 2, 1 and 0 types of geometric quality criteria respectively. A grey segment represents the fraction of residues that are not modelled. The numeric value for each fraction is indicated below the corresponding segment, with a dot representing fractions  $\leq 5\%$ . The upper red bar (where present) indicates the fraction of residues that have poor fit to the electron density. The numeric value is given above the bar.

Mol	Chain	Length	Quality of chain
1	A	508	<div> <div>7%</div> <div>83%</div> <div>8%</div> <div>9%</div> </div>

## 2 Entry composition [i](#)

There are 9 unique types of molecules in this entry. The entry contains 3996 atoms, of which 0 are hydrogens and 0 are deuteriums.

In the tables below, the ZeroOcc column contains the number of atoms modelled with zero occupancy, the AltConf column contains the number of residues with at least one atom in alternate conformation and the Trace column contains the number of residues modelled with at most 2 atoms.

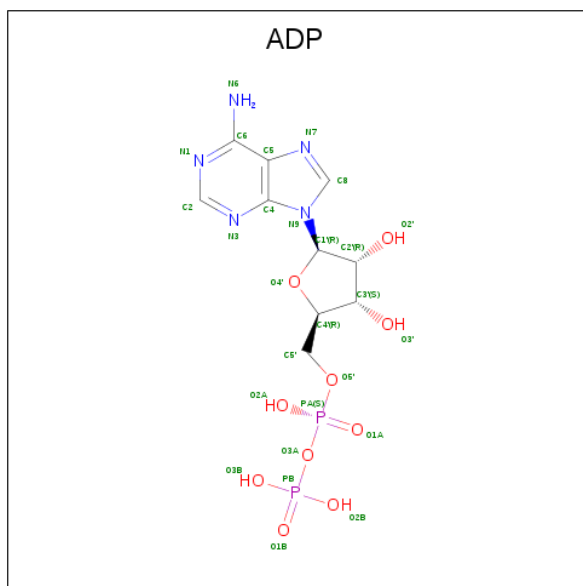
- Molecule 1 is a protein called Depupylase.

Mol	Chain	Residues	Atoms					ZeroOcc	AltConf	Trace
			Total	C	N	O	S			
1	A	464	3689	2314	673	685	17	0	9	0

There are 6 discrepancies between the modelled and reference sequences:

Chain	Residue	Modelled	Actual	Comment	Reference
A	503	GLU	-	expression tag	UNP A0LU48
A	504	ASN	-	expression tag	UNP A0LU48
A	505	LEU	-	expression tag	UNP A0LU48
A	506	TYR	-	expression tag	UNP A0LU48
A	507	PHE	-	expression tag	UNP A0LU48
A	508	GLN	-	expression tag	UNP A0LU48

- Molecule 2 is ADENOSINE-5'-DIPHOSPHATE (three-letter code: ADP) (formula:  $C_{10}H_{15}N_5O_{10}P_2$ ).

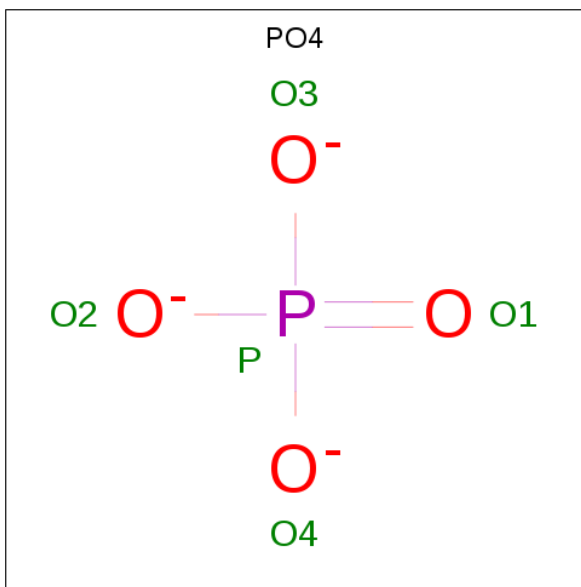


Mol	Chain	Residues	Atoms					ZeroOcc	AltConf
2	A	1	Total	C	N	O	P	0	0
			27	10	5	10	2		

- Molecule 3 is MAGNESIUM ION (three-letter code: MG) (formula: Mg).

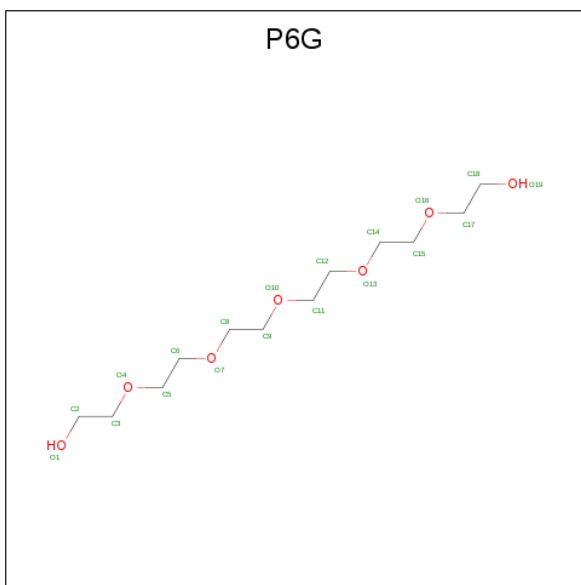
Mol	Chain	Residues	Atoms		ZeroOcc	AltConf
3	A	4	Total	Mg	0	0
			4	4		

- Molecule 4 is PHOSPHATE ION (three-letter code: PO4) (formula: O<sub>4</sub>P).



Mol	Chain	Residues	Atoms			ZeroOcc	AltConf
4	A	1	Total	O	P	0	0
			5	4	1		

- Molecule 5 is HEXAETHYLENE GLYCOL (three-letter code: P6G) (formula: C<sub>12</sub>H<sub>26</sub>O<sub>7</sub>).



Mol	Chain	Residues	Atoms			ZeroOcc	AltConf
5	A	1	Total	C	O	0	0
			19	12	7		

- Molecule 6 is TRIETHYLENE GLYCOL (three-letter code: PGE) (formula:  $C_6H_{14}O_4$ ).



Mol	Chain	Residues	Atoms			ZeroOcc	AltConf
6	A	1	Total	C	O	0	0
			10	6	4		
6	A	1	Total	C	O	0	0
			10	6	4		

- Molecule 7 is DI(HYDROXYETHYL)ETHER (three-letter code: PEG) (formula:  $C_4H_{10}O_3$ ).



Mol	Chain	Residues	Atoms			ZeroOcc	AltConf
7	A	1	Total	C	O	0	0
			7	4	3		

- Molecule 8 is SODIUM ION (three-letter code: NA) (formula: Na).

Mol	Chain	Residues	Atoms		ZeroOcc	AltConf
8	A	1	Total	Na	0	0
			1	1		

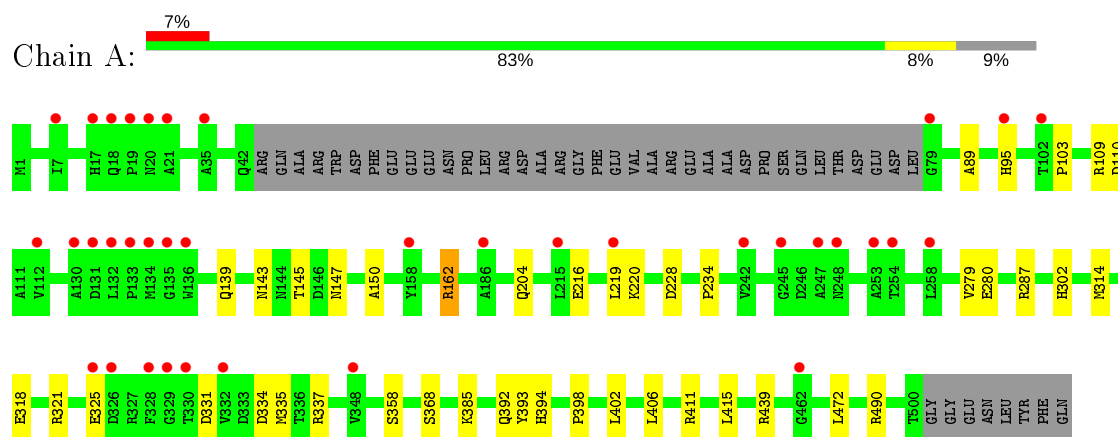
- Molecule 9 is water.

Mol	Chain	Residues	Atoms		ZeroOcc	AltConf
9	A	224	Total	O	0	0
			224	224		

### 3 Residue-property plots [i](#)

These plots are drawn for all protein, RNA, DNA and oligosaccharide chains in the entry. The first graphic for a chain summarises the proportions of the various outlier classes displayed in the second graphic. The second graphic shows the sequence view annotated by issues in geometry and electron density. Residues are color-coded according to the number of geometric quality criteria for which they contain at least one outlier: green = 0, yellow = 1, orange = 2 and red = 3 or more. A red dot above a residue indicates a poor fit to the electron density ( $RSRZ > 2$ ). Stretches of 2 or more consecutive residues without any outlier are shown as a green connector. Residues present in the sample, but not in the model, are shown in grey.

- Molecule 1: Depupylase



## 4 Data and refinement statistics

Property	Value	Source
Space group	P 31 2 1	Depositor
Cell constants a, b, c, $\alpha$ , $\beta$ , $\gamma$	72.40 Å 72.40 Å 215.25 Å 90.00° 90.00° 120.00°	Depositor
Resolution (Å)	36.20 – 1.85 36.20 – 1.85	Depositor EDS
% Data completeness (in resolution range)	100.0 (36.20-1.85) 95.2 (36.20-1.85)	Depositor EDS
$R_{merge}$	0.04	Depositor
$R_{sym}$	(Not available)	Depositor
$\langle I/\sigma(I) \rangle$ <sup>1</sup>	1.40 (at 1.85 Å)	Xtriage
Refinement program	PHENIX 1.10_2155	Depositor
R, $R_{free}$	0.167 , 0.198 0.167 , 0.198	Depositor DCC
$R_{free}$ test set	2880 reflections (5.06%)	wwPDB-VP
Wilson B-factor (Å <sup>2</sup> )	37.1	Xtriage
Anisotropy	0.088	Xtriage
Bulk solvent $k_{sol}$ (e/Å <sup>3</sup> ), $B_{sol}$ (Å <sup>2</sup> )	0.36 , 55.9	EDS
L-test for twinning <sup>2</sup>	$\langle  L  \rangle = 0.49$ , $\langle L^2 \rangle = 0.32$	Xtriage
Estimated twinning fraction	0.028 for -h,-k,l	Xtriage
$F_o, F_c$ correlation	0.97	EDS
Total number of atoms	3996	wwPDB-VP
Average B, all atoms (Å <sup>2</sup> )	49.0	wwPDB-VP

Xtriage's analysis on translational NCS is as follows: *The largest off-origin peak in the Patterson function is 3.87% of the height of the origin peak. No significant pseudotranslation is detected.*

<sup>1</sup>Intensities estimated from amplitudes.

<sup>2</sup>Theoretical values of  $\langle |L| \rangle$ ,  $\langle L^2 \rangle$  for acentric reflections are 0.5, 0.333 respectively for untwinned datasets, and 0.375, 0.2 for perfectly twinned datasets.



## 5 Model quality [i](#)

### 5.1 Standard geometry [i](#)

Bond lengths and bond angles in the following residue types are not validated in this section: MG, PGE, ADP, NA, PO4, P6G, PEG

The Z score for a bond length (or angle) is the number of standard deviations the observed value is removed from the expected value. A bond length (or angle) with  $|Z| > 5$  is considered an outlier worth inspection. RMSZ is the root-mean-square of all Z scores of the bond lengths (or angles).

Mol	Chain	Bond lengths		Bond angles	
		RMSZ	$\# Z  > 5$	RMSZ	$\# Z  > 5$
1	A	0.54	0/3792	0.67	1/5151 (0.0%)

There are no bond length outliers.

All (1) bond angle outliers are listed below:

Mol	Chain	Res	Type	Atoms	Z	Observed( $^{\circ}$ )	Ideal( $^{\circ}$ )
1	A	162	ARG	NE-CZ-NH2	-5.01	117.79	120.30

There are no chirality outliers.

There are no planarity outliers.

### 5.2 Too-close contacts [i](#)

In the following table, the Non-H and H(model) columns list the number of non-hydrogen atoms and hydrogen atoms in the chain respectively. The H(added) column lists the number of hydrogen atoms added and optimized by MolProbity. The Clashes column lists the number of clashes within the asymmetric unit, whereas Symm-Clashes lists symmetry related clashes.

Mol	Chain	Non-H	H(model)	H(added)	Clashes	Symm-Clashes
1	A	3689	0	3638	34	0
2	A	27	0	12	0	0
3	A	4	0	0	0	0
4	A	5	0	0	0	0
5	A	19	0	26	6	0
6	A	20	0	28	4	0
7	A	7	0	10	1	0
8	A	1	0	0	0	0
9	A	224	0	0	8	0
All	All	3996	0	3714	34	0

The all-atom clashscore is defined as the number of clashes found per 1000 atoms (including hydrogen atoms). The all-atom clashscore for this structure is 5.

All (34) close contacts within the same asymmetric unit are listed below, sorted by their clash magnitude.

Atom-1	Atom-2	Interatomic distance (Å)	Clash overlap (Å)
1:A:145[B]:THR:HG22	1:A:147:ASN:H	1.32	0.93
1:A:411:ARG:HH21	5:A:607:P6G:H171	1.44	0.82
1:A:334:ASP:OD1	1:A:337:ARG:NH2	2.19	0.75
1:A:162:ARG:NH2	1:A:228:ASP:OD2	2.21	0.72
1:A:368:SER:HB3	5:A:607:P6G:H141	1.72	0.69
1:A:279:VAL:O	9:A:701:HOH:O	2.15	0.63
1:A:398:PRO:HB3	7:A:610:PEG:H21	1.81	0.62
1:A:358:SER:HB2	5:A:607:P6G:H182	1.84	0.59
1:A:335:MET:HB2	6:A:609:PGE:H5	1.86	0.57
1:A:406:LEU:HD22	5:A:607:P6G:H172	1.89	0.55
1:A:204:GLN:NE2	9:A:710:HOH:O	2.39	0.53
1:A:109[A]:ARG:NH2	6:A:609:PGE:H52	2.23	0.53
1:A:411:ARG:NH2	5:A:607:P6G:H171	2.18	0.53
1:A:109[B]:ARG:NH1	1:A:110:ASP:OD1	2.44	0.51
1:A:139[B]:GLN:NE2	9:A:714:HOH:O	2.44	0.50
1:A:393:TYR:HA	1:A:402:LEU:HB2	1.93	0.50
1:A:143:ASN:HB3	1:A:394:HIS:CG	2.48	0.48
1:A:415:LEU:HD22	6:A:609:PGE:H2	1.96	0.48
1:A:280:GLU:HA	1:A:302:HIS:CE1	2.49	0.47
1:A:162:ARG:HD3	1:A:234:PRO:O	2.14	0.47
1:A:145[B]:THR:HG22	1:A:147:ASN:N	2.14	0.46
1:A:392:GLN:NE2	9:A:705:HOH:O	2.28	0.46
1:A:287[B]:ARG:HD2	9:A:847:HOH:O	2.16	0.45
1:A:219:LEU:O	1:A:220:LYS:C	2.54	0.43
1:A:216:GLU:OE1	1:A:219:LEU:HB2	2.19	0.42
1:A:472:LEU:HD23	1:A:472:LEU:HA	1.82	0.42
1:A:411:ARG:HH22	5:A:607:P6G:H122	1.84	0.42
1:A:314:MET:O	1:A:318:GLU:HG3	2.20	0.42
1:A:335:MET:HA	6:A:609:PGE:H42	2.01	0.42
1:A:150:ALA:N	9:A:709:HOH:O	2.53	0.41
1:A:321:ARG:O	1:A:325:GLU:HG3	2.19	0.41
1:A:385:LYS:NZ	9:A:703:HOH:O	2.24	0.41
1:A:89:ALA:HB2	1:A:103:PRO:HD3	2.02	0.41
1:A:490:ARG:HD3	9:A:712:HOH:O	2.21	0.40

There are no symmetry-related clashes.

## 5.3 Torsion angles [i](#)

### 5.3.1 Protein backbone [i](#)

In the following table, the Percentiles column shows the percent Ramachandran outliers of the chain as a percentile score with respect to all X-ray entries followed by that with respect to entries of similar resolution.

The Analysed column shows the number of residues for which the backbone conformation was analysed, and the total number of residues.

Mol	Chain	Analysed	Favoured	Allowed	Outliers	Percentiles	
1	A	469/508 (92%)	456 (97%)	12 (3%)	1 (0%)	47	33

All (1) Ramachandran outliers are listed below:

Mol	Chain	Res	Type
1	A	95	HIS

### 5.3.2 Protein sidechains [i](#)

In the following table, the Percentiles column shows the percent sidechain outliers of the chain as a percentile score with respect to all X-ray entries followed by that with respect to entries of similar resolution.

The Analysed column shows the number of residues for which the sidechain conformation was analysed, and the total number of residues.

Mol	Chain	Analysed	Rotameric	Outliers	Percentiles	
1	A	386/420 (92%)	384 (100%)	2 (0%)	88	86

All (2) residues with a non-rotameric sidechain are listed below:

Mol	Chain	Res	Type
1	A	331	ASP
1	A	439	ARG

Some sidechains can be flipped to improve hydrogen bonding and reduce clashes. There are no such sidechains identified.

### 5.3.3 RNA [i](#)

There are no RNA molecules in this entry.

## 5.4 Non-standard residues in protein, DNA, RNA chains ⓘ

There are no non-standard protein/DNA/RNA residues in this entry.

## 5.5 Carbohydrates ⓘ

There are no monosaccharides in this entry.

## 5.6 Ligand geometry ⓘ

Of 11 ligands modelled in this entry, 5 are monoatomic - leaving 6 for Mogul analysis.

In the following table, the Counts columns list the number of bonds (or angles) for which Mogul statistics could be retrieved, the number of bonds (or angles) that are observed in the model and the number of bonds (or angles) that are defined in the Chemical Component Dictionary. The Link column lists molecule types, if any, to which the group is linked. The Z score for a bond length (or angle) is the number of standard deviations the observed value is removed from the expected value. A bond length (or angle) with  $|Z| > 2$  is considered an outlier worth inspection. RMSZ is the root-mean-square of all Z scores of the bond lengths (or angles).

Mol	Type	Chain	Res	Link	Bond lengths			Bond angles		
					Counts	RMSZ	$\# Z  > 2$	Counts	RMSZ	$\# Z  > 2$
4	PO4	A	606	8,3	4,4,4	0.64	0	6,6,6	0.95	0
7	PEG	A	610	-	6,6,6	1.42	1 (16%)	5,5,5	0.40	0
5	P6G	A	607	-	18,18,18	1.94	5 (27%)	17,17,17	0.85	0
6	PGE	A	609	-	9,9,9	0.27	0	8,8,8	0.47	0
2	ADP	A	601	3	24,29,29	0.89	1 (4%)	29,45,45	1.64	4 (13%)
6	PGE	A	608	-	9,9,9	0.29	0	8,8,8	0.41	0

In the following table, the Chirals column lists the number of chiral outliers, the number of chiral centers analysed, the number of these observed in the model and the number defined in the Chemical Component Dictionary. Similar counts are reported in the Torsion and Rings columns. '-' means no outliers of that kind were identified.

Mol	Type	Chain	Res	Link	Chirals	Torsions	Rings
6	PGE	A	609	-	-	5/7/7/7	-
7	PEG	A	610	-	-	1/4/4/4	-
5	P6G	A	607	-	-	5/16/16/16	-
2	ADP	A	601	3	-	4/12/32/32	0/3/3/3
6	PGE	A	608	-	-	4/7/7/7	-

All (7) bond length outliers are listed below:

Mol	Chain	Res	Type	Atoms	Z	Observed(Å)	Ideal(Å)
5	A	607	P6G	C12-C11	2.93	1.64	1.49
5	A	607	P6G	C9-C8	2.53	1.62	1.49
5	A	607	P6G	C6-C5	2.40	1.61	1.49
7	A	610	PEG	C2-C1	2.25	1.61	1.49
5	A	607	P6G	O13-C12	2.21	1.51	1.42
5	A	607	P6G	C15-C14	2.08	1.59	1.49
2	A	601	ADP	C2-N3	2.06	1.35	1.32

All (4) bond angle outliers are listed below:

Mol	Chain	Res	Type	Atoms	Z	Observed(°)	Ideal(°)
2	A	601	ADP	N3-C2-N1	-4.44	121.74	128.68
2	A	601	ADP	C1'-N9-C4	-4.19	119.28	126.64
2	A	601	ADP	N6-C6-N1	2.76	124.31	118.57
2	A	601	ADP	C2-N1-C6	2.46	122.96	118.75

There are no chirality outliers.

All (19) torsion outliers are listed below:

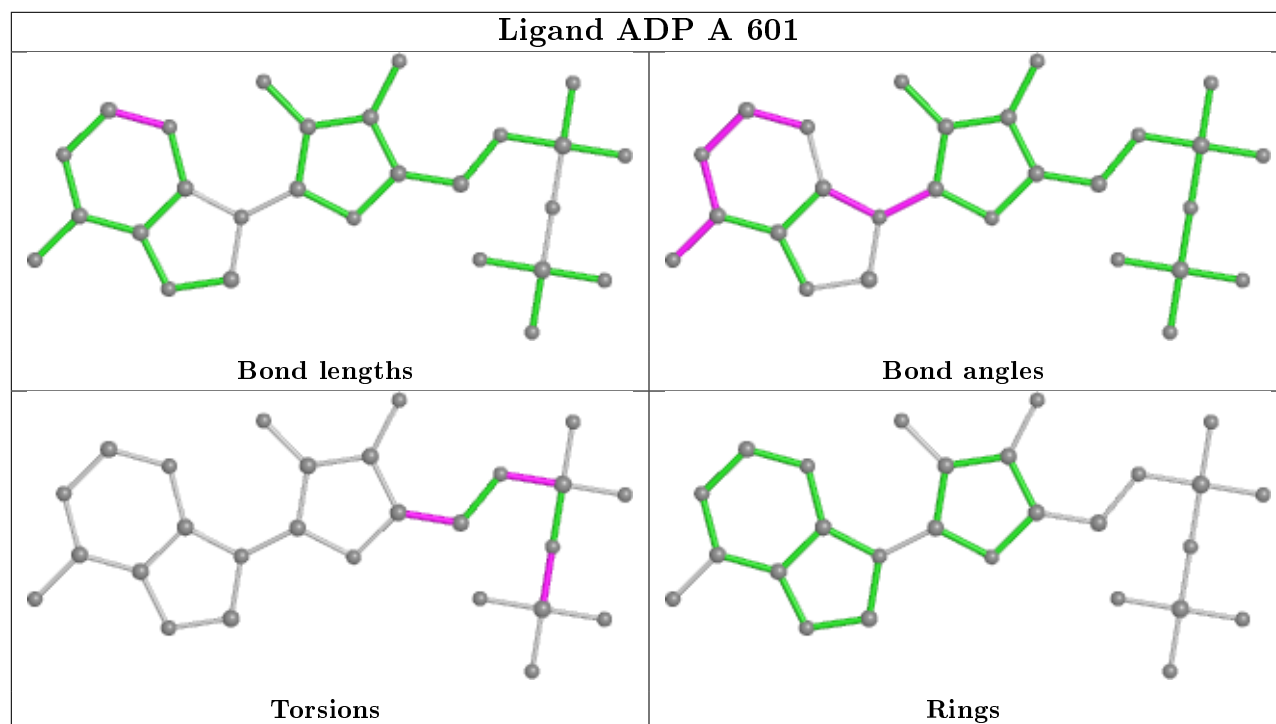
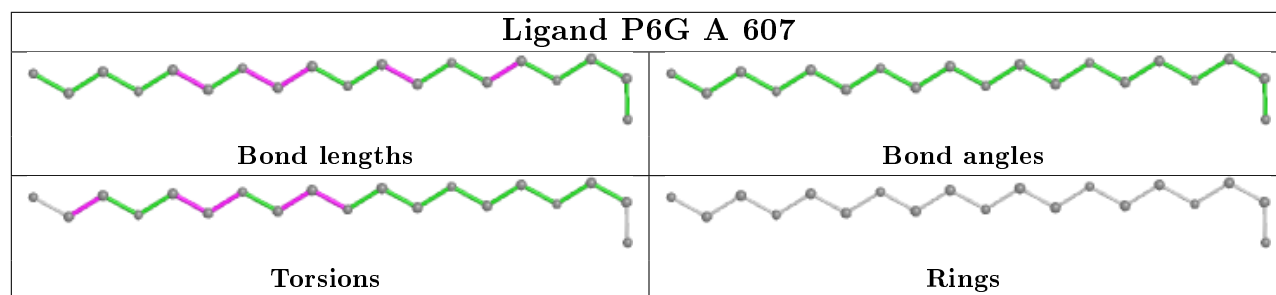
Mol	Chain	Res	Type	Atoms
2	A	601	ADP	PA-O3A-PB-O2B
6	A	609	PGE	O2-C3-C4-O3
6	A	608	PGE	O3-C5-C6-O4
5	A	607	P6G	O13-C14-C15-O16
6	A	609	PGE	O3-C5-C6-O4
5	A	607	P6G	O16-C17-C18-O19
6	A	609	PGE	C3-C4-O3-C5
6	A	608	PGE	C4-C3-O2-C2
6	A	609	PGE	O1-C1-C2-O2
6	A	608	PGE	O1-C1-C2-O2
5	A	607	P6G	C12-C11-O10-C9
6	A	609	PGE	C1-C2-O2-C3
7	A	610	PEG	O2-C3-C4-O4
5	A	607	P6G	O10-C11-C12-O13
5	A	607	P6G	C15-C14-O13-C12
2	A	601	ADP	PA-O3A-PB-O1B
6	A	608	PGE	C6-C5-O3-C4
2	A	601	ADP	C5'-O5'-PA-O1A
2	A	601	ADP	O4'-C4'-C5'-O5'

There are no ring outliers.

3 monomers are involved in 11 short contacts:

Mol	Chain	Res	Type	Clashes	Symm-Clashes
7	A	610	PEG	1	0
5	A	607	P6G	6	0
6	A	609	PGE	4	0

The following is a two-dimensional graphical depiction of Mogul quality analysis of bond lengths, bond angles, torsion angles, and ring geometry for all instances of the Ligand of Interest. In addition, ligands with molecular weight > 250 and outliers as shown on the validation Tables will also be included. For torsion angles, if less than 5% of the Mogul distribution of torsion angles is within 10 degrees of the torsion angle in question, then that torsion angle is considered an outlier. Any bond that is central to one or more torsion angles identified as an outlier by Mogul will be highlighted in the graph. For rings, the root-mean-square deviation (RMSD) between the ring in question and similar rings identified by Mogul is calculated over all ring torsion angles. If the average RMSD is greater than 60 degrees and the minimal RMSD between the ring in question and any Mogul-identified rings is also greater than 60 degrees, then that ring is considered an outlier. The outliers are highlighted in purple. The color gray indicates Mogul did not find sufficient equivalents in the CSD to analyse the geometry.



## 5.7 Other polymers

There are no such residues in this entry.

## 5.8 Polymer linkage issues

There are no chain breaks in this entry.

## 6 Fit of model and data ⓘ

### 6.1 Protein, DNA and RNA chains ⓘ

In the following table, the column labelled ‘#RSRZ> 2’ contains the number (and percentage) of RSRZ outliers, followed by percent RSRZ outliers for the chain as percentile scores relative to all X-ray entries and entries of similar resolution. The OWAB column contains the minimum, median, 95<sup>th</sup> percentile and maximum values of the occupancy-weighted average B-factor per residue. The column labelled ‘Q< 0.9’ lists the number of (and percentage) of residues with an average occupancy less than 0.9.

Mol	Chain	Analysed	<RSRZ>	#RSRZ>2	OWAB(Å <sup>2</sup> )	Q<0.9
1	A	464/508 (91%)	0.24	37 (7%) 12 12	28, 47, 74, 98	0

All (37) RSRZ outliers are listed below:

Mol	Chain	Res	Type	RSRZ
1	A	17	HIS	6.1
1	A	330	THR	5.6
1	A	133	PRO	4.5
1	A	20	ASN	4.3
1	A	19	PRO	4.1
1	A	136	TRP	3.6
1	A	7	ILE	3.6
1	A	134	MET	3.6
1	A	258	LEU	3.4
1	A	219	LEU	3.3
1	A	135	GLY	3.2
1	A	21	ALA	3.1
1	A	131	ASP	3.1
1	A	332	VAL	3.1
1	A	247	ALA	3.1
1	A	326	ASP	2.9
1	A	95	HIS	2.8
1	A	329	GLY	2.7
1	A	328	PHE	2.7
1	A	112	VAL	2.7
1	A	245	GLY	2.4
1	A	242	VAL	2.4
1	A	130	ALA	2.3
1	A	253	ALA	2.3
1	A	254	THR	2.3
1	A	462	GLY	2.3
1	A	18	GLN	2.3

*Continued on next page...*



*Continued from previous page...*

Mol	Chain	Res	Type	RSRZ
1	A	79	GLY	2.2
1	A	35	ALA	2.2
1	A	348	VAL	2.2
1	A	158	TYR	2.2
1	A	325	GLU	2.2
1	A	248	ASN	2.2
1	A	215	LEU	2.1
1	A	186	ALA	2.1
1	A	102	THR	2.0
1	A	132	LEU	2.0

## 6.2 Non-standard residues in protein, DNA, RNA chains [i](#)

There are no non-standard protein/DNA/RNA residues in this entry.

## 6.3 Carbohydrates [i](#)

There are no monosaccharides in this entry.

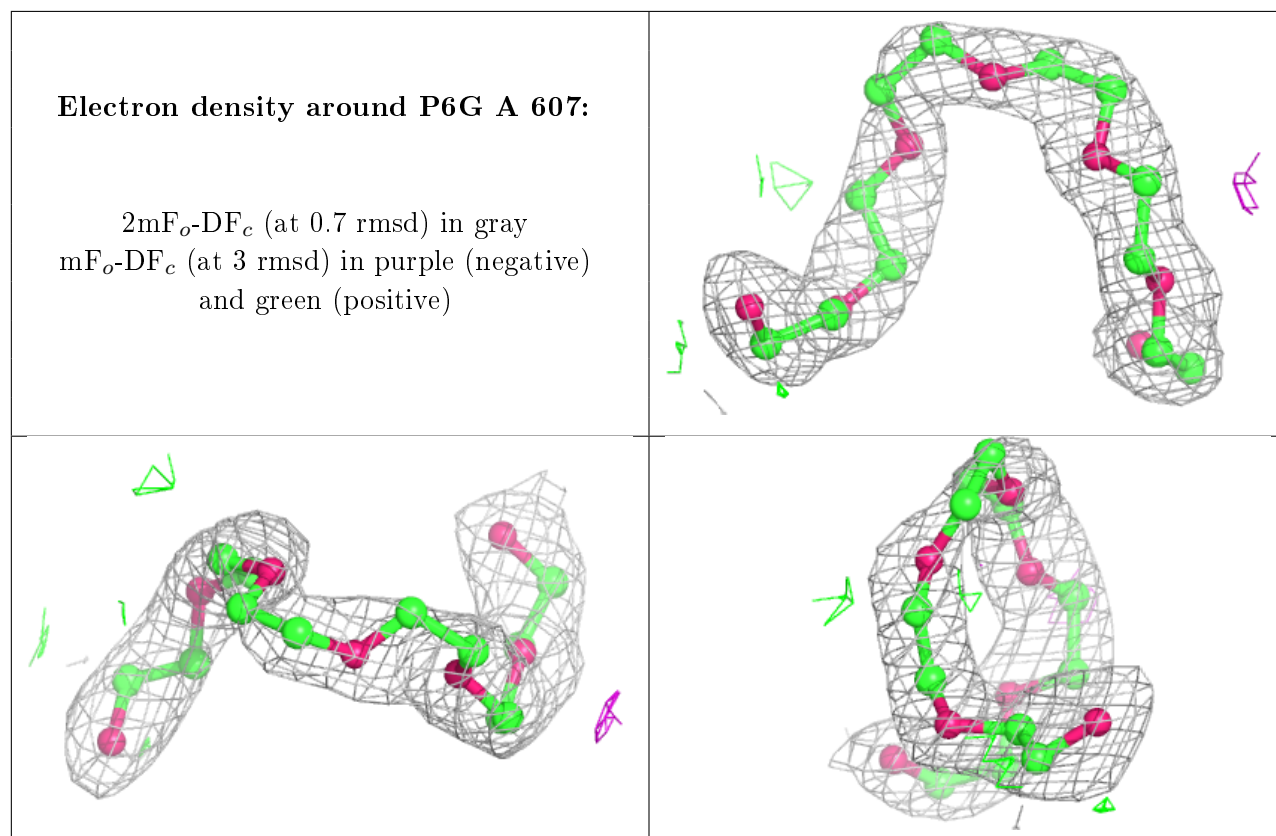
## 6.4 Ligands [i](#)

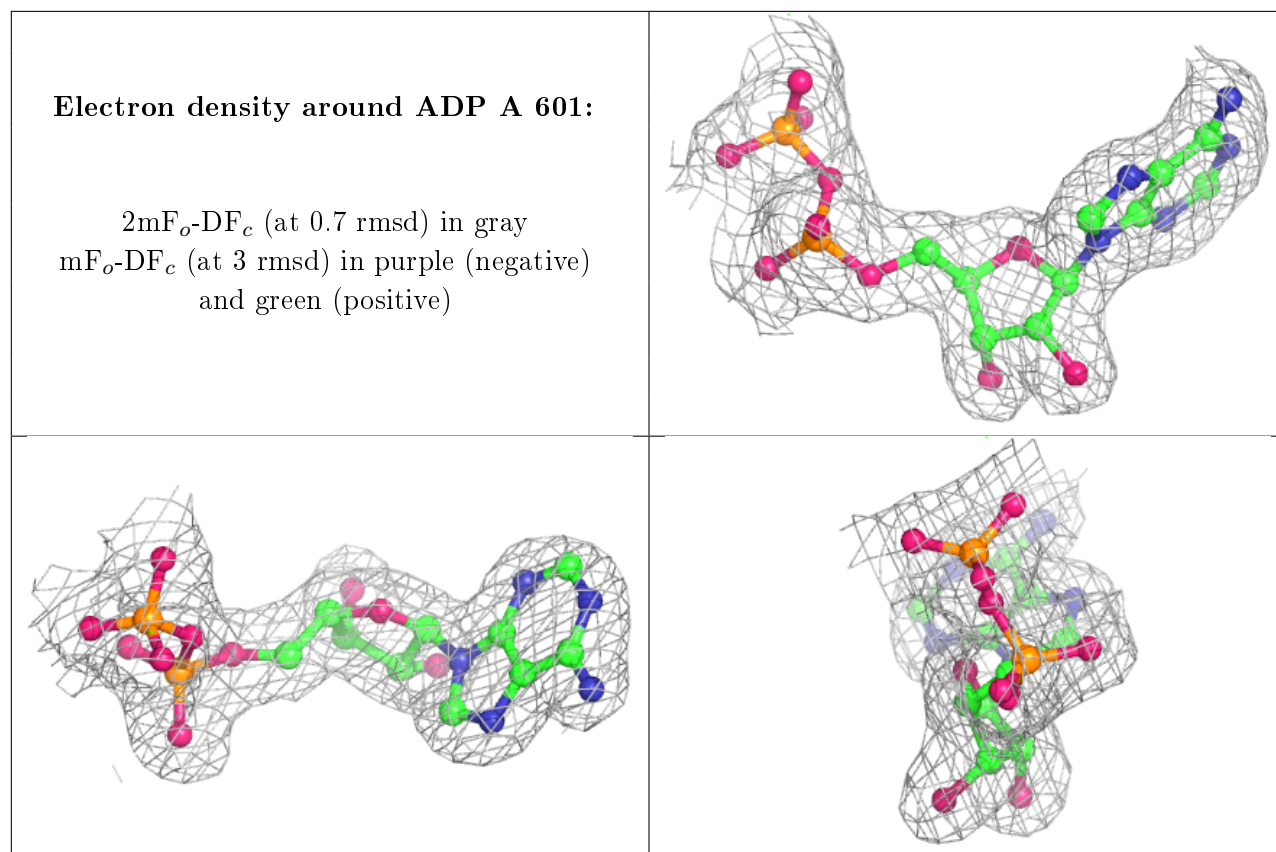
In the following table, the Atoms column lists the number of modelled atoms in the group and the number defined in the chemical component dictionary. The B-factors column lists the minimum, median, 95<sup>th</sup> percentile and maximum values of B factors of atoms in the group. The column labelled 'Q<0.9' lists the number of atoms with occupancy less than 0.9.

Mol	Type	Chain	Res	Atoms	RSCC	RSR	B-factors(Å <sup>2</sup> )	Q<0.9
7	PEG	A	610	7/7	0.81	0.17	70,71,73,73	0
6	PGE	A	609	10/10	0.84	0.14	68,70,71,72	0
5	P6G	A	607	19/19	0.86	0.13	45,67,75,75	0
8	NA	A	611	1/1	0.90	0.17	54,54,54,54	0
6	PGE	A	608	10/10	0.92	0.12	63,66,74,75	0
3	MG	A	605	1/1	0.97	0.05	29,29,29,29	0
3	MG	A	602	1/1	0.97	0.04	39,39,39,39	0
3	MG	A	604	1/1	0.98	0.09	31,31,31,31	0
3	MG	A	603	1/1	0.99	0.09	29,29,29,29	0
4	PO4	A	606	5/5	0.99	0.06	29,30,34,38	0
2	ADP	A	601	27/27	0.99	0.11	28,32,37,39	0

The following is a graphical depiction of the model fit to experimental electron density of all

instances of the Ligand of Interest. In addition, ligands with molecular weight > 250 and outliers as shown on the geometry validation Tables will also be included. Each fit is shown from different orientation to approximate a three-dimensional view.





## 6.5 Other polymers [i](#)

There are no such residues in this entry.