



# Full wwPDB X-ray Structure Validation Report ⓘ

Aug 7, 2020 – 11:22 AM BST

PDB ID : 6LS5  
Title : Structure of human liver FBPase complexed with covalent allosteric inhibitor  
Authors : Yunyuan, H.; Rongrong, S.; Yixiang, X.; Shuaishuai, N.; Yanliang, R.; Jian, L.; Jian, W.  
Deposited on : 2020-01-17  
Resolution : 2.03 Å(reported)

This is a Full wwPDB X-ray Structure Validation Report for a publicly released PDB entry.

We welcome your comments at [validation@mail.wwpdb.org](mailto:validation@mail.wwpdb.org)

A user guide is available at

<https://www.wwpdb.org/validation/2017/XrayValidationReportHelp>

with specific help available everywhere you see the ⓘ symbol.

---

The following versions of software and data (see [references ⓘ](#)) were used in the production of this report:

MolProbity : 4.02b-467  
Mogul : 1.8.5 (274361), CSD as541be (2020)  
Xtriage (Phenix) : 1.13  
EDS : 2.13.1  
buster-report : 1.1.7 (2018)  
Percentile statistics : 20191225.v01 (using entries in the PDB archive December 25th 2019)  
Refmac : 5.8.0158  
CCP4 : 7.0.044 (Gargrove)  
Ideal geometry (proteins) : Engh & Huber (2001)  
Ideal geometry (DNA, RNA) : Parkinson et al. (1996)  
Validation Pipeline (wwPDB-VP) : 2.13.1

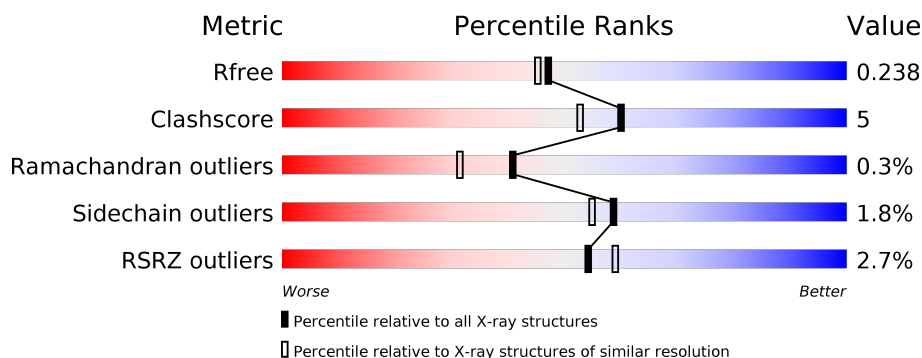
# 1 Overall quality at a glance

The following experimental techniques were used to determine the structure:

## *X-RAY DIFFRACTION*

The reported resolution of this entry is 2.03 Å.

Percentile scores (ranging between 0-100) for global validation metrics of the entry are shown in the following graphic. The table shows the number of entries on which the scores are based.



Metric	Whole archive (#Entries)	Similar resolution (#Entries, resolution range(Å))
$R_{free}$	130704	1692 (2.04-2.04)
Clashscore	141614	1773 (2.04-2.04)
Ramachandran outliers	138981	1752 (2.04-2.04)
Sidechain outliers	138945	1752 (2.04-2.04)
RSRZ outliers	127900	1672 (2.04-2.04)

The table below summarises the geometric issues observed across the polymeric chains and their fit to the electron density. The red, orange, yellow and green segments on the lower bar indicate the fraction of residues that contain outliers for  $\geq 3$ , 2, 1 and 0 types of geometric quality criteria respectively. A grey segment represents the fraction of residues that are not modelled. The numeric value for each fraction is indicated below the corresponding segment, with a dot representing fractions  $\leq 5\%$ . The upper red bar (where present) indicates the fraction of residues that have poor fit to the electron density. The numeric value is given above the bar.

Mol	Chain	Length	Quality of chain
1	A	353	<div> <div>2%</div> <div> <div></div> <div>84%</div> <div>9%</div> <div>7%</div> </div> </div>
1	B	353	<div> <div>3%</div> <div> <div></div> <div>79%</div> <div>12%</div> <div>8%</div> </div> </div>
1	C	353	<div> <div>%</div> <div> <div></div> <div>82%</div> <div>9%</div> <div>9%</div> </div> </div>
1	D	353	<div> <div>3%</div> <div> <div></div> <div>80%</div> <div>11%</div> <div>7%</div> </div> </div>

## 2 Entry composition

There are 5 unique types of molecules in this entry. The entry contains 10651 atoms, of which 0 are hydrogens and 0 are deuteriums.

In the tables below, the ZeroOcc column contains the number of atoms modelled with zero occupancy, the AltConf column contains the number of residues with at least one atom in alternate conformation and the Trace column contains the number of residues modelled with at most 2 atoms.

- Molecule 1 is a protein called Fructose-1,6-bisphosphatase 1.

Mol	Chain	Residues	Atoms					ZeroOcc	AltConf	Trace
1	A	327	Total	C	N	O	S	0	0	0
			2497	1587	419	474	17			
1	B	323	Total	C	N	O	S	0	0	0
			2471	1572	414	468	17			
1	C	320	Total	C	N	O	S	0	0	0
			2447	1559	410	461	17			
1	D	327	Total	C	N	O	S	0	0	0
			2497	1587	419	474	17			

There are 60 discrepancies between the modelled and reference sequences:

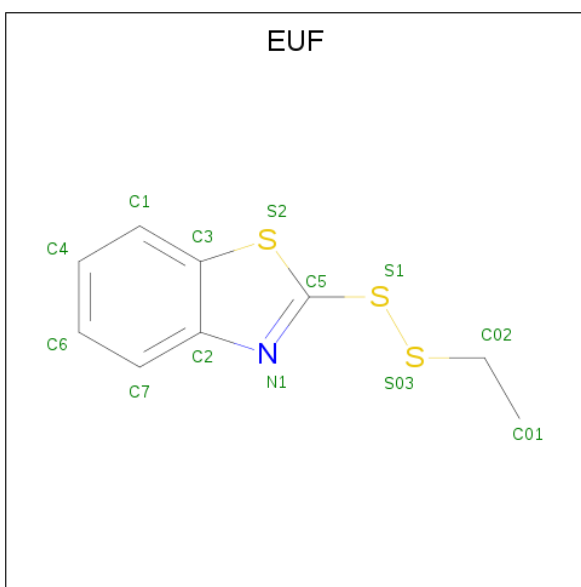
Chain	Residue	Modelled	Actual	Comment	Reference
A	-15	MET	-	initiating methionine	UNP Q2TU34
A	-14	SER	-	expression tag	UNP Q2TU34
A	-13	TYR	-	expression tag	UNP Q2TU34
A	-12	TYR	-	expression tag	UNP Q2TU34
A	-11	HIS	-	expression tag	UNP Q2TU34
A	-10	HIS	-	expression tag	UNP Q2TU34
A	-9	HIS	-	expression tag	UNP Q2TU34
A	-8	HIS	-	expression tag	UNP Q2TU34
A	-7	HIS	-	expression tag	UNP Q2TU34
A	-6	HIS	-	expression tag	UNP Q2TU34
A	-5	GLU	-	expression tag	UNP Q2TU34
A	-4	GLY	-	expression tag	UNP Q2TU34
A	-3	VAL	-	expression tag	UNP Q2TU34
A	-2	ARG	-	expression tag	UNP Q2TU34
A	-1	THR	-	expression tag	UNP Q2TU34
B	-15	MET	-	initiating methionine	UNP Q2TU34
B	-14	SER	-	expression tag	UNP Q2TU34
B	-13	TYR	-	expression tag	UNP Q2TU34
B	-12	TYR	-	expression tag	UNP Q2TU34
B	-11	HIS	-	expression tag	UNP Q2TU34
B	-10	HIS	-	expression tag	UNP Q2TU34

*Continued on next page...*

*Continued from previous page...*

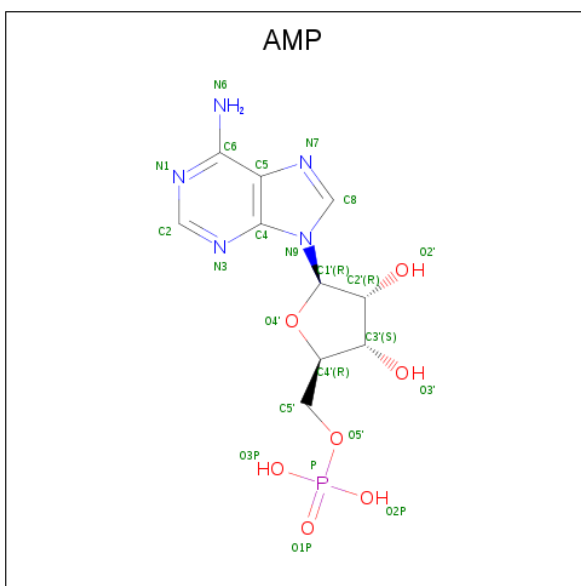
Chain	Residue	Modelled	Actual	Comment	Reference
B	-9	HIS	-	expression tag	UNP Q2TU34
B	-8	HIS	-	expression tag	UNP Q2TU34
B	-7	HIS	-	expression tag	UNP Q2TU34
B	-6	HIS	-	expression tag	UNP Q2TU34
B	-5	GLU	-	expression tag	UNP Q2TU34
B	-4	GLY	-	expression tag	UNP Q2TU34
B	-3	VAL	-	expression tag	UNP Q2TU34
B	-2	ARG	-	expression tag	UNP Q2TU34
B	-1	THR	-	expression tag	UNP Q2TU34
C	-15	MET	-	initiating methionine	UNP Q2TU34
C	-14	SER	-	expression tag	UNP Q2TU34
C	-13	TYR	-	expression tag	UNP Q2TU34
C	-12	TYR	-	expression tag	UNP Q2TU34
C	-11	HIS	-	expression tag	UNP Q2TU34
C	-10	HIS	-	expression tag	UNP Q2TU34
C	-9	HIS	-	expression tag	UNP Q2TU34
C	-8	HIS	-	expression tag	UNP Q2TU34
C	-7	HIS	-	expression tag	UNP Q2TU34
C	-6	HIS	-	expression tag	UNP Q2TU34
C	-5	GLU	-	expression tag	UNP Q2TU34
C	-4	GLY	-	expression tag	UNP Q2TU34
C	-3	VAL	-	expression tag	UNP Q2TU34
C	-2	ARG	-	expression tag	UNP Q2TU34
C	-1	THR	-	expression tag	UNP Q2TU34
D	-15	MET	-	initiating methionine	UNP Q2TU34
D	-14	SER	-	expression tag	UNP Q2TU34
D	-13	TYR	-	expression tag	UNP Q2TU34
D	-12	TYR	-	expression tag	UNP Q2TU34
D	-11	HIS	-	expression tag	UNP Q2TU34
D	-10	HIS	-	expression tag	UNP Q2TU34
D	-9	HIS	-	expression tag	UNP Q2TU34
D	-8	HIS	-	expression tag	UNP Q2TU34
D	-7	HIS	-	expression tag	UNP Q2TU34
D	-6	HIS	-	expression tag	UNP Q2TU34
D	-5	GLU	-	expression tag	UNP Q2TU34
D	-4	GLY	-	expression tag	UNP Q2TU34
D	-3	VAL	-	expression tag	UNP Q2TU34
D	-2	ARG	-	expression tag	UNP Q2TU34
D	-1	THR	-	expression tag	UNP Q2TU34

- Molecule 2 is 2-(ethyldisulfanyl)-1,3-benzothiazole (three-letter code: EUF) (formula: C<sub>9</sub>H<sub>9</sub>NS<sub>3</sub>) (labeled as "Ligand of Interest" by author).



Mol	Chain	Residues	Atoms			ZeroOcc	AltConf
2	A	1	Total	C	S	0	0
			3	2	1		

- Molecule 3 is ADENOSINE MONOPHOSPHATE (three-letter code: AMP) (formula:  $C_{10}H_{14}N_5O_7P$ ).



Mol	Chain	Residues	Atoms					ZeroOcc	AltConf
3	A	1	Total	C	N	O	P	0	0
			23	10	5	7	1		
3	B	1	Total	C	N	O	P	0	0
			23	10	5	7	1		
3	C	1	Total	C	N	O	P	0	0
			23	10	5	7	1		

*Continued on next page...*

*Continued from previous page...*

Mol	Chain	Residues	Atoms					ZeroOcc	AltConf
3	D	1	Total	C	N	O	P	0	0
			23	10	5	7	1		

- Molecule 4 is MAGNESIUM ION (three-letter code: MG) (formula: Mg).

Mol	Chain	Residues	Atoms		ZeroOcc	AltConf
4	B	1	Total	Mg	0	0
			1	1		
4	A	1	Total	Mg	0	0
			1	1		
4	D	1	Total	Mg	0	0
			1	1		
4	C	1	Total	Mg	0	0
			1	1		

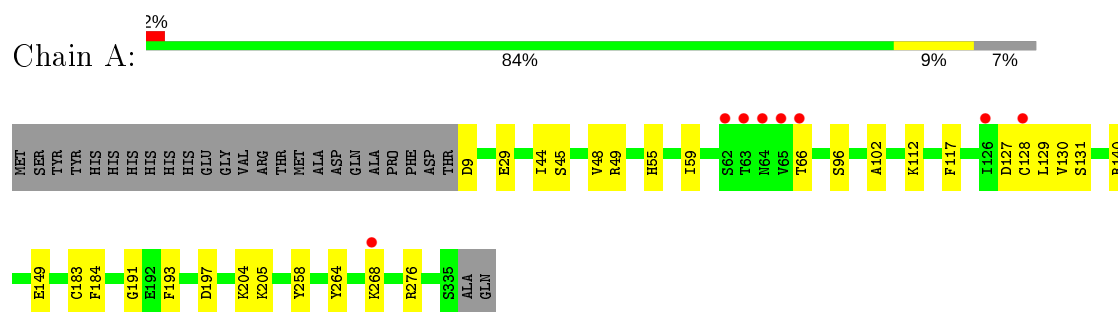
- Molecule 5 is water.

Mol	Chain	Residues	Atoms		ZeroOcc	AltConf
5	A	197	Total	O	0	0
			197	197		
5	B	168	Total	O	0	0
			168	168		
5	C	158	Total	O	0	0
			158	158		
5	D	117	Total	O	0	0
			117	117		

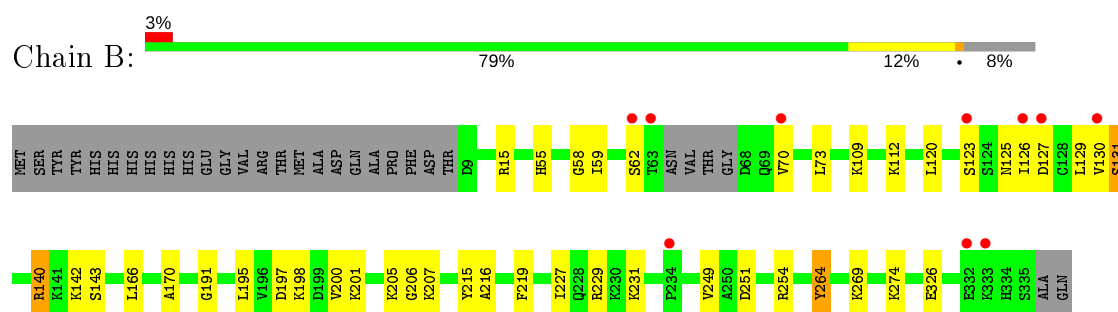
### 3 Residue-property plots [i](#)

These plots are drawn for all protein, RNA, DNA and oligosaccharide chains in the entry. The first graphic for a chain summarises the proportions of the various outlier classes displayed in the second graphic. The second graphic shows the sequence view annotated by issues in geometry and electron density. Residues are color-coded according to the number of geometric quality criteria for which they contain at least one outlier: green = 0, yellow = 1, orange = 2 and red = 3 or more. A red dot above a residue indicates a poor fit to the electron density ( $RSRZ > 2$ ). Stretches of 2 or more consecutive residues without any outlier are shown as a green connector. Residues present in the sample, but not in the model, are shown in grey.

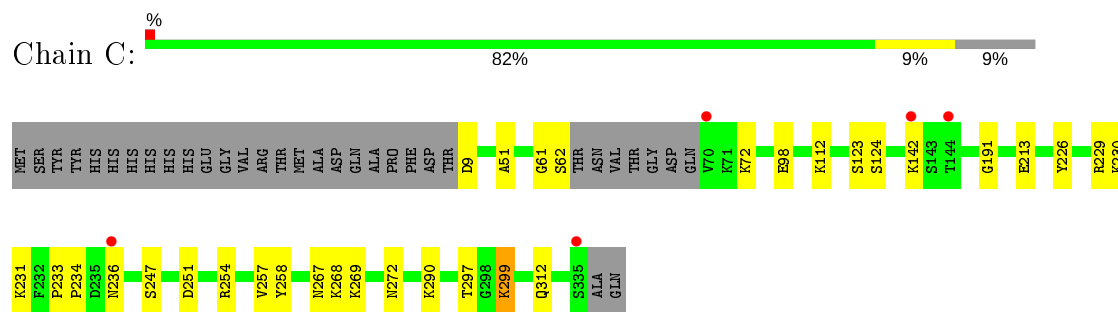
#### • Molecule 1: Fructose-1,6-bisphosphatase 1



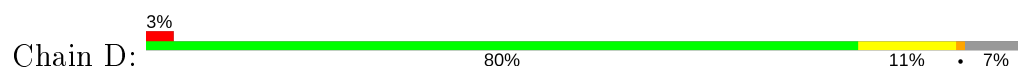
#### • Molecule 1: Fructose-1,6-bisphosphatase 1

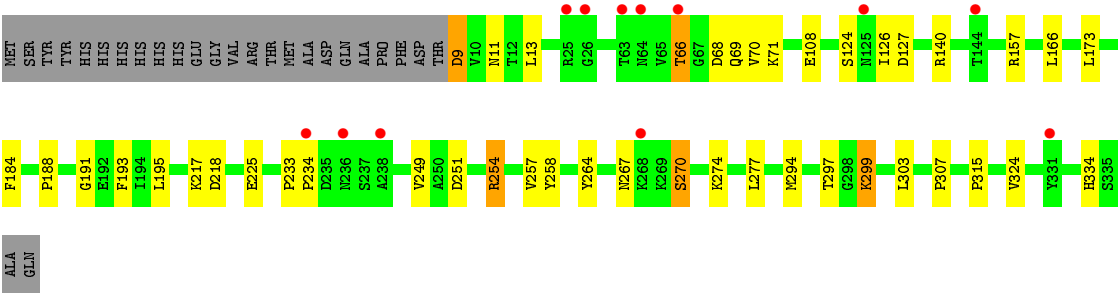


#### • Molecule 1: Fructose-1,6-bisphosphatase 1



#### • Molecule 1: Fructose-1,6-bisphosphatase 1







## 4 Data and refinement statistics

Property	Value	Source
Space group	P 21 21 21	Depositor
Cell constants a, b, c, $\alpha$ , $\beta$ , $\gamma$	67.60 Å 83.52 Å 276.93 Å 90.00° 90.00° 90.00°	Depositor
Resolution (Å)	42.84 – 2.03 42.84 – 2.03	Depositor EDS
% Data completeness (in resolution range)	99.7 (42.84-2.03) 99.7 (42.84-2.03)	Depositor EDS
$R_{merge}$	(Not available)	Depositor
$R_{sym}$	(Not available)	Depositor
$\langle I/\sigma(I) \rangle$ <sup>1</sup>	2.07 (at 2.03 Å)	Xtriage
Refinement program	PHENIX 1.14 _3260	Depositor
R, $R_{free}$	0.194 , 0.237 0.195 , 0.238	Depositor DCC
$R_{free}$ test set	5092 reflections (5.00%)	wwPDB-VP
Wilson B-factor (Å <sup>2</sup> )	30.1	Xtriage
Anisotropy	0.209	Xtriage
Bulk solvent $k_{sol}$ (e/Å <sup>3</sup> ), $B_{sol}$ (Å <sup>2</sup> )	0.37 , 49.8	EDS
L-test for twinning <sup>2</sup>	$\langle  L  \rangle = 0.42$ , $\langle L^2 \rangle = 0.25$	Xtriage
Estimated twinning fraction	No twinning to report.	Xtriage
$F_o, F_c$ correlation	0.95	EDS
Total number of atoms	10651	wwPDB-VP
Average B, all atoms (Å <sup>2</sup> )	33.0	wwPDB-VP

Xtriage's analysis on translational NCS is as follows: *The largest off-origin peak in the Patterson function is 3.39% of the height of the origin peak. No significant pseudotranslation is detected.*

<sup>1</sup>Intensities estimated from amplitudes.

<sup>2</sup>Theoretical values of  $\langle |L| \rangle$ ,  $\langle L^2 \rangle$  for acentric reflections are 0.5, 0.333 respectively for untwinned datasets, and 0.375, 0.2 for perfectly twinned datasets.

## 5 Model quality [i](#)

### 5.1 Standard geometry [i](#)

Bond lengths and bond angles in the following residue types are not validated in this section: AMP, MG, EUF

The Z score for a bond length (or angle) is the number of standard deviations the observed value is removed from the expected value. A bond length (or angle) with  $|Z| > 5$  is considered an outlier worth inspection. RMSZ is the root-mean-square of all Z scores of the bond lengths (or angles).

Mol	Chain	Bond lengths		Bond angles	
		RMSZ	$\# Z  > 5$	RMSZ	$\# Z  > 5$
1	A	0.42	0/2541	0.59	0/3434
1	B	0.42	0/2514	0.56	0/3395
1	C	0.40	0/2490	0.56	0/3362
1	D	0.41	0/2541	0.58	2/3434 (0.1%)
All	All	0.41	0/10086	0.57	2/13625 (0.0%)

There are no bond length outliers.

All (2) bond angle outliers are listed below:

Mol	Chain	Res	Type	Atoms	Z	Observed(°)	Ideal(°)
1	D	66	THR	N-CA-C	6.11	127.50	111.00
1	D	254	ARG	NE-CZ-NH2	-5.35	117.63	120.30

There are no chirality outliers.

There are no planarity outliers.

### 5.2 Too-close contacts [i](#)

In the following table, the Non-H and H(model) columns list the number of non-hydrogen atoms and hydrogen atoms in the chain respectively. The H(added) column lists the number of hydrogen atoms added and optimized by MolProbity. The Clashes column lists the number of clashes within the asymmetric unit, whereas Symm-Clashes lists symmetry related clashes.

Mol	Chain	Non-H	H(model)	H(added)	Clashes	Symm-Clashes
1	A	2497	0	2540	19	0
1	B	2471	0	2515	30	0
1	C	2447	0	2496	21	1
1	D	2497	0	2541	28	1
2	A	3	0	0	0	0

*Continued on next page...*

*Continued from previous page...*

Mol	Chain	Non-H	H(model)	H(added)	Clashes	Symm-Clashes
3	A	23	0	12	0	0
3	B	23	0	12	0	0
3	C	23	0	12	0	0
3	D	23	0	12	2	0
4	A	1	0	0	0	0
4	B	1	0	0	0	0
4	C	1	0	0	0	0
4	D	1	0	0	0	0
5	A	197	0	0	5	0
5	B	168	0	0	5	0
5	C	158	0	0	8	0
5	D	117	0	0	5	0
All	All	10651	0	10140	92	1

The all-atom clashscore is defined as the number of clashes found per 1000 atoms (including hydrogen atoms). The all-atom clashscore for this structure is 5.

All (92) close contacts within the same asymmetric unit are listed below, sorted by their clash magnitude.

Atom-1	Atom-2	Interatomic distance (Å)	Clash overlap (Å)
1:B:264:TYR:CZ	1:B:274:LYS:HD2	2.10	0.86
1:A:129:LEU:HD11	1:B:170:ALA:HB3	1.65	0.77
1:B:191:GLY:HA3	1:D:191:GLY:HA3	1.72	0.72
1:B:70:VAL:HB	1:B:126:ILE:HG22	1.72	0.72
1:C:72:LYS:NZ	5:C:502:HOH:O	2.24	0.71
1:B:142:LYS:NZ	5:B:501:HOH:O	2.04	0.70
1:C:142:LYS:NZ	5:C:505:HOH:O	2.25	0.70
1:B:205:LYS:NZ	5:B:502:HOH:O	2.20	0.69
1:A:9:ASP:N	5:A:504:HOH:O	2.26	0.68
1:C:290:LYS:NZ	5:C:506:HOH:O	2.25	0.68
1:B:264:TYR:OH	1:B:274:LYS:HD2	1.92	0.67
1:A:130:VAL:O	5:A:501:HOH:O	2.12	0.67
1:A:205:LYS:NZ	5:A:506:HOH:O	2.29	0.64
1:D:299:LYS:NZ	5:D:503:HOH:O	2.30	0.64
1:B:229:ARG:NH1	1:B:326:GLU:OE2	2.31	0.63
1:B:109:LYS:NZ	1:D:9:ASP:OD2	2.33	0.62
1:D:270:SER:OG	1:D:274:LYS:HE3	2.01	0.61
1:C:267:ASN:C	1:C:268:LYS:HE2	2.22	0.59
1:A:191:GLY:HA3	1:C:191:GLY:HA3	1.84	0.58
1:D:251:ASP:OD1	1:D:254:ARG:NH2	2.35	0.58
1:A:131:SER:N	5:A:510:HOH:O	2.36	0.58

*Continued on next page...*

*Continued from previous page...*

Atom-1	Atom-2	Interatomic distance (Å)	Clash overlap (Å)
1:B:70:VAL:HB	1:B:126:ILE:CG2	2.34	0.57
1:B:131:SER:N	5:B:507:HOH:O	2.38	0.56
1:C:251:ASP:OD1	1:C:254:ARG:NH2	2.38	0.56
1:D:157:ARG:NH2	5:D:502:HOH:O	2.27	0.55
1:A:102:ALA:HB3	1:A:149:GLU:HG2	1.87	0.55
1:D:225:GLU:OE1	1:D:334:HIS:NE2	2.30	0.54
1:D:297:THR:HB	1:D:315:PRO:HG2	1.91	0.53
1:A:55:HIS:HA	1:A:59:ILE:HG22	1.88	0.53
1:B:125:ASN:O	1:B:130:VAL:HG12	2.09	0.53
1:C:213:GLU:OE1	1:C:231:LYS:NZ	2.34	0.53
1:D:184:PHE:HB3	1:D:193:PHE:HB3	1.91	0.53
1:D:294:MET:HE2	1:D:324:VAL:HB	1.92	0.52
1:D:68:ASP:HA	1:D:71:LYS:HD2	1.92	0.52
1:B:206:GLY:O	1:B:207:LYS:HD2	2.11	0.51
1:B:215:TYR:HE1	1:B:269:LYS:HD3	1.76	0.50
1:C:290:LYS:NZ	5:C:504:HOH:O	2.44	0.50
1:B:166:LEU:HD13	1:B:249:VAL:HG12	1.95	0.49
1:D:13:LEU:HD22	1:D:173:LEU:HD23	1.94	0.49
1:A:184:PHE:HB3	1:A:193:PHE:HB3	1.94	0.49
1:B:73:LEU:HD23	1:B:126:ILE:CD1	2.43	0.48
1:B:216:ALA:HA	1:B:219:PHE:CD2	2.49	0.48
1:C:297:THR:OG1	1:C:299:LYS:HG2	2.14	0.48
1:B:227:ILE:HG22	1:B:231:LYS:HE3	1.97	0.47
1:D:218:ASP:O	1:D:267:ASN:HB2	2.15	0.47
1:A:45:SER:O	1:A:49:ARG:HD3	2.15	0.47
1:B:55:HIS:HA	1:B:59:ILE:HG22	1.96	0.47
1:D:140:ARG:NH2	3:D:401:AMP:O3'	2.48	0.47
1:C:233:PRO:HA	1:C:234:PRO:HD3	1.77	0.46
1:D:218:ASP:O	5:D:501:HOH:O	2.20	0.46
1:D:70:VAL:O	1:D:70:VAL:HG22	2.14	0.46
1:A:44:ILE:O	1:A:48:VAL:HG23	2.16	0.46
1:B:120:LEU:HD12	1:B:120:LEU:HA	1.77	0.46
1:B:200:VAL:O	1:B:201:LYS:HD3	2.16	0.46
1:C:272:ASN:HA	5:C:524:HOH:O	2.15	0.46
1:A:127:ASP:OD2	1:A:130:VAL:HB	2.15	0.46
1:C:268:LYS:HE2	1:C:268:LYS:N	2.30	0.46
1:C:98:GLU:HB3	5:C:501:HOH:O	2.15	0.46
1:B:142:LYS:HG2	5:B:501:HOH:O	2.15	0.46
1:C:229:ARG:HD2	5:C:508:HOH:O	2.16	0.46
1:C:98:GLU:OE1	5:C:501:HOH:O	2.20	0.45
1:D:233:PRO:HA	1:D:234:PRO:HD3	1.83	0.45

*Continued on next page...*

*Continued from previous page...*

Atom-1	Atom-2	Interatomic distance (Å)	Clash overlap (Å)
1:C:51:ALA:HA	1:D:188:PRO:HD2	1.98	0.45
1:C:258:TYR:OH	1:D:127:ASP:HB2	2.16	0.45
1:D:11:ASN:ND2	5:D:504:HOH:O	2.31	0.45
1:B:195:LEU:HD21	1:B:198:LYS:HG2	1.98	0.45
1:C:257:VAL:HG12	1:C:258:TYR:CD1	2.52	0.45
1:C:226:TYR:CZ	1:C:230:LYS:HE3	2.52	0.45
1:D:217:LYS:HE3	1:D:217:LYS:HB3	1.53	0.44
1:A:112:LYS:HD3	1:A:140:ARG:HD2	2.00	0.43
1:C:61:GLY:O	1:C:62:SER:OG	2.35	0.43
1:D:157:ARG:HG2	1:D:303:LEU:O	2.17	0.43
1:B:58:GLY:HA2	1:B:62:SER:O	2.18	0.43
1:A:258:TYR:OH	1:B:127:ASP:HB2	2.18	0.43
1:D:277:LEU:HD23	1:D:307:PRO:HB3	2.00	0.43
1:C:269:LYS:HD2	1:C:269:LYS:HA	1.72	0.43
1:B:112:LYS:HD2	1:B:140:ARG:NH2	2.34	0.42
1:D:126:ILE:HA	5:D:508:HOH:O	2.18	0.42
1:A:96:SER:HB2	1:A:117:PHE:CZ	2.54	0.42
1:A:130:VAL:HG12	1:A:131:SER:H	1.84	0.42
1:D:108:GLU:CD	1:D:108:GLU:H	2.23	0.42
1:D:184:PHE:CE2	1:D:195:LEU:HD13	2.55	0.42
1:A:183:CYS:HB2	1:A:197:ASP:HB2	2.01	0.42
1:A:29:GLU:OE1	1:A:112:LYS:HG2	2.20	0.42
1:A:268:LYS:HB3	5:A:639:HOH:O	2.19	0.41
1:D:166:LEU:HD13	1:D:249:VAL:HG12	2.01	0.41
1:B:120:LEU:O	1:B:123:SER:HB3	2.20	0.41
1:D:257:VAL:HG12	1:D:258:TYR:CD1	2.56	0.41
1:B:15:ARG:NE	5:B:526:HOH:O	2.54	0.41
1:B:129:LEU:HA	1:B:129:LEU:HD23	1.84	0.40
1:B:251:ASP:OD1	1:B:254:ARG:NH2	2.43	0.40
3:D:401:AMP:O5'	3:D:401:AMP:H8	2.05	0.40

All (1) symmetry-related close contacts are listed below. The label for Atom-2 includes the symmetry operator and encoded unit-cell translations to be applied.

Atom-1	Atom-2	Interatomic distance (Å)	Clash overlap (Å)
1:C:236:ASN:ND2	1:D:70:VAL:O[4_455]	2.07	0.13

## 5.3 Torsion angles

### 5.3.1 Protein backbone

In the following table, the Percentiles column shows the percent Ramachandran outliers of the chain as a percentile score with respect to all X-ray entries followed by that with respect to entries of similar resolution.

The Analysed column shows the number of residues for which the backbone conformation was analysed, and the total number of residues.

Mol	Chain	Analysed	Favoured	Allowed	Outliers	Percentiles	
1	A	325/353 (92%)	309 (95%)	14 (4%)	2 (1%)	25	15
1	B	319/353 (90%)	314 (98%)	5 (2%)	0	100	100
1	C	316/353 (90%)	308 (98%)	7 (2%)	1 (0%)	41	31
1	D	325/353 (92%)	313 (96%)	11 (3%)	1 (0%)	41	31
All	All	1285/1412 (91%)	1244 (97%)	37 (3%)	4 (0%)	41	31

All (4) Ramachandran outliers are listed below:

Mol	Chain	Res	Type
1	A	128	CYS
1	A	66	THR
1	D	124	SER
1	C	124	SER

### 5.3.2 Protein sidechains

In the following table, the Percentiles column shows the percent sidechain outliers of the chain as a percentile score with respect to all X-ray entries followed by that with respect to entries of similar resolution.

The Analysed column shows the number of residues for which the sidechain conformation was analysed, and the total number of residues.

Mol	Chain	Analysed	Rotameric	Outliers	Percentiles	
1	A	273/295 (92%)	270 (99%)	3 (1%)	73	73
1	B	270/295 (92%)	265 (98%)	5 (2%)	57	53
1	C	267/295 (90%)	261 (98%)	6 (2%)	52	46
1	D	273/295 (92%)	267 (98%)	6 (2%)	52	46
All	All	1083/1180 (92%)	1063 (98%)	20 (2%)	59	55

All (20) residues with a non-rotameric sidechain are listed below:

Mol	Chain	Res	Type
1	A	204	LYS
1	A	264	TYR
1	A	276	ARG
1	B	131	SER
1	B	140	ARG
1	B	143	SER
1	B	197	ASP
1	B	264	TYR
1	C	9	ASP
1	C	112	LYS
1	C	123	SER
1	C	247	SER
1	C	299	LYS
1	C	312	GLN
1	D	9	ASP
1	D	66	THR
1	D	69	GLN
1	D	264	TYR
1	D	270	SER
1	D	299	LYS

Some sidechains can be flipped to improve hydrogen bonding and reduce clashes. There are no such sidechains identified.

### 5.3.3 RNA [i](#)

There are no RNA molecules in this entry.

### 5.4 Non-standard residues in protein, DNA, RNA chains [i](#)

There are no non-standard protein/DNA/RNA residues in this entry.

### 5.5 Carbohydrates [i](#)

There are no monosaccharides in this entry.

### 5.6 Ligand geometry [i](#)

Of 9 ligands modelled in this entry, 4 are monoatomic - leaving 5 for Mogul analysis.

In the following table, the Counts columns list the number of bonds (or angles) for which Mogul statistics could be retrieved, the number of bonds (or angles) that are observed in the model and the number of bonds (or angles) that are defined in the Chemical Component Dictionary. The Link column lists molecule types, if any, to which the group is linked. The Z score for a bond length (or angle) is the number of standard deviations the observed value is removed from the expected value. A bond length (or angle) with  $|Z| > 2$  is considered an outlier worth inspection. RMSZ is the root-mean-square of all Z scores of the bond lengths (or angles).

Mol	Type	Chain	Res	Link	Bond lengths			Bond angles		
					Counts	RMSZ	# $ Z  > 2$	Counts	RMSZ	# $ Z  > 2$
3	AMP	A	402	-	22,25,25	0.87	1 (4%)	25,38,38	1.24	4 (16%)
2	EUF	A	401	1	2,2,14	0.70	0	0,1,18	0.00	-
3	AMP	B	401	-	22,25,25	0.97	2 (9%)	25,38,38	1.17	2 (8%)
3	AMP	D	401	-	22,25,25	0.95	2 (9%)	25,38,38	1.19	2 (8%)
3	AMP	C	401	-	22,25,25	0.97	2 (9%)	25,38,38	1.10	3 (12%)

In the following table, the Chirals column lists the number of chiral outliers, the number of chiral centers analysed, the number of these observed in the model and the number defined in the Chemical Component Dictionary. Similar counts are reported in the Torsion and Rings columns. '-' means no outliers of that kind were identified.

Mol	Type	Chain	Res	Link	Chirals	Torsions	Rings
3	AMP	A	402	-	-	0/6/26/26	0/3/3/3
3	AMP	B	401	-	-	0/6/26/26	0/3/3/3
3	AMP	D	401	-	-	0/6/26/26	0/3/3/3
3	AMP	C	401	-	-	0/6/26/26	0/3/3/3

All (7) bond length outliers are listed below:

Mol	Chain	Res	Type	Atoms	Z	Observed(Å)	Ideal(Å)
3	C	401	AMP	C5-C4	2.61	1.47	1.40
3	D	401	AMP	C5-C4	2.59	1.47	1.40
3	B	401	AMP	C5-C4	2.54	1.47	1.40
3	A	402	AMP	C5-C4	2.45	1.47	1.40
3	B	401	AMP	C2-N3	2.28	1.35	1.32
3	C	401	AMP	C2-N3	2.24	1.35	1.32
3	D	401	AMP	C2-N3	2.09	1.35	1.32

All (11) bond angle outliers are listed below:

Mol	Chain	Res	Type	Atoms	Z	Observed(°)	Ideal(°)
3	A	402	AMP	N3-C2-N1	-3.40	123.36	128.68
3	D	401	AMP	N3-C2-N1	-3.19	123.70	128.68

*Continued on next page...*



*Continued from previous page...*

Mol	Chain	Res	Type	Atoms	Z	Observed(°)	Ideal(°)
3	B	401	AMP	N3-C2-N1	-2.74	124.39	128.68
3	C	401	AMP	C4-C5-N7	-2.60	106.69	109.40
3	D	401	AMP	C4-C5-N7	-2.57	106.72	109.40
3	B	401	AMP	C4-C5-N7	-2.49	106.81	109.40
3	C	401	AMP	N3-C2-N1	-2.44	124.86	128.68
3	A	402	AMP	C4-C5-N7	-2.30	107.01	109.40
3	A	402	AMP	C2-N1-C6	2.13	122.39	118.75
3	A	402	AMP	O3P-P-O2P	2.10	115.66	107.64
3	C	401	AMP	O3P-P-O2P	2.01	115.31	107.64

There are no chirality outliers.

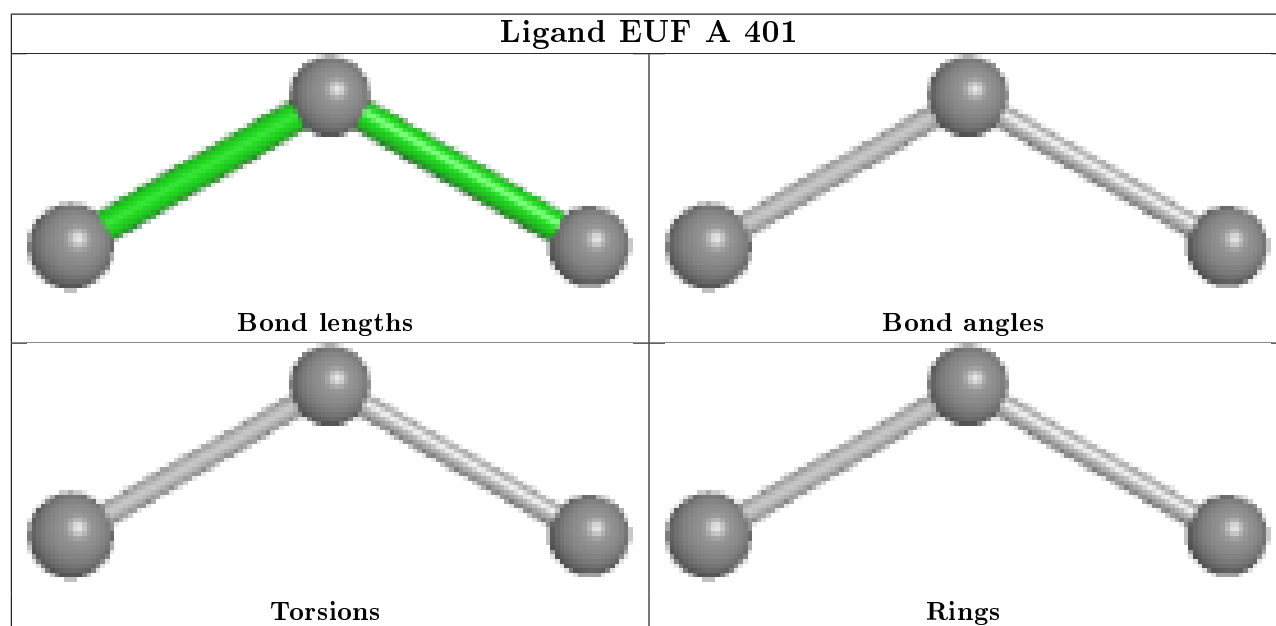
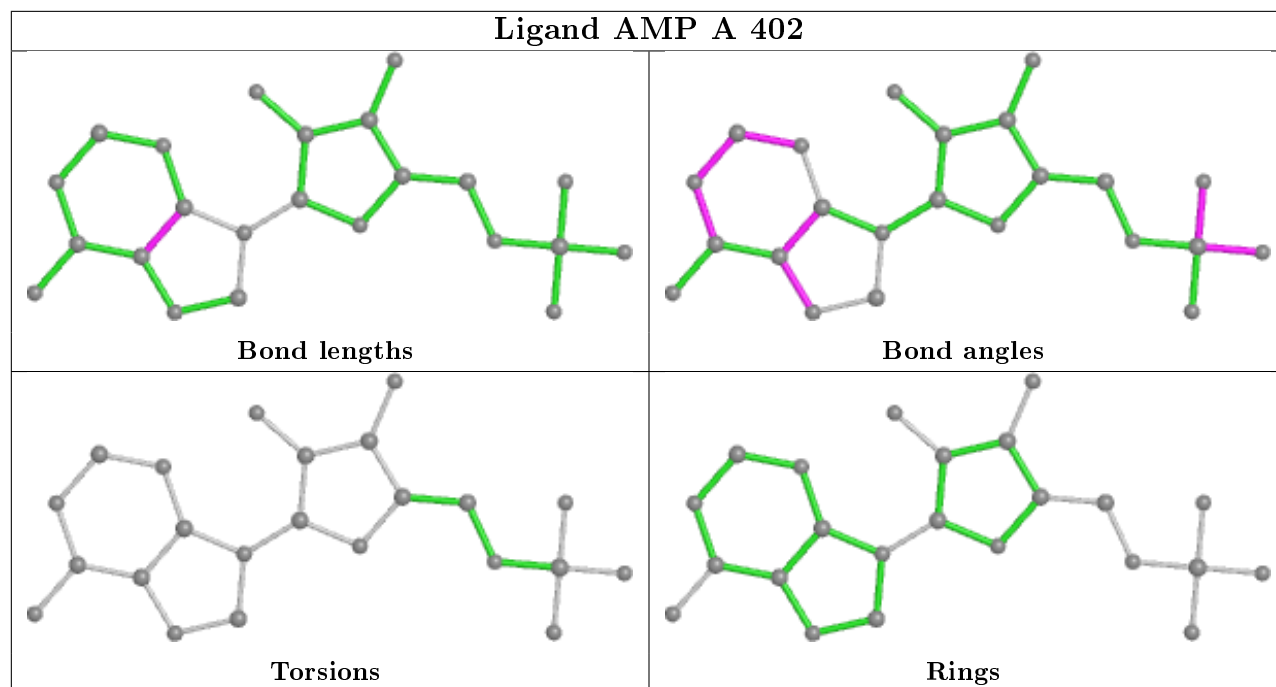
There are no torsion outliers.

There are no ring outliers.

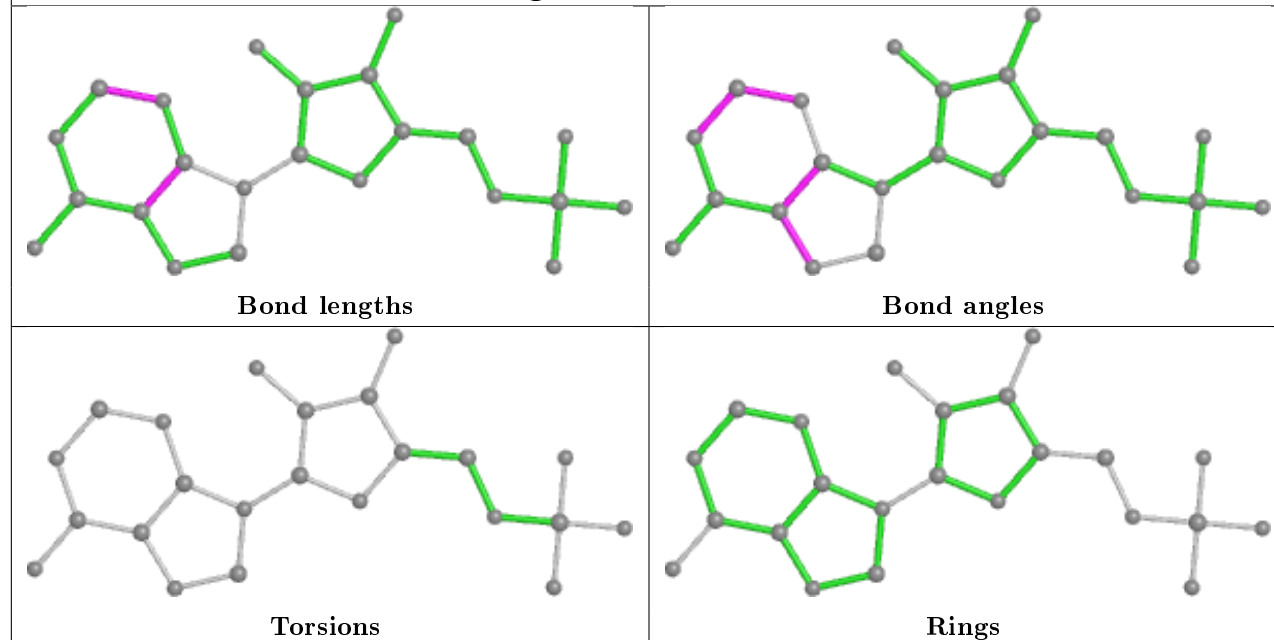
1 monomer is involved in 2 short contacts:

Mol	Chain	Res	Type	Clashes	Symm-Clashes
3	D	401	AMP	2	0

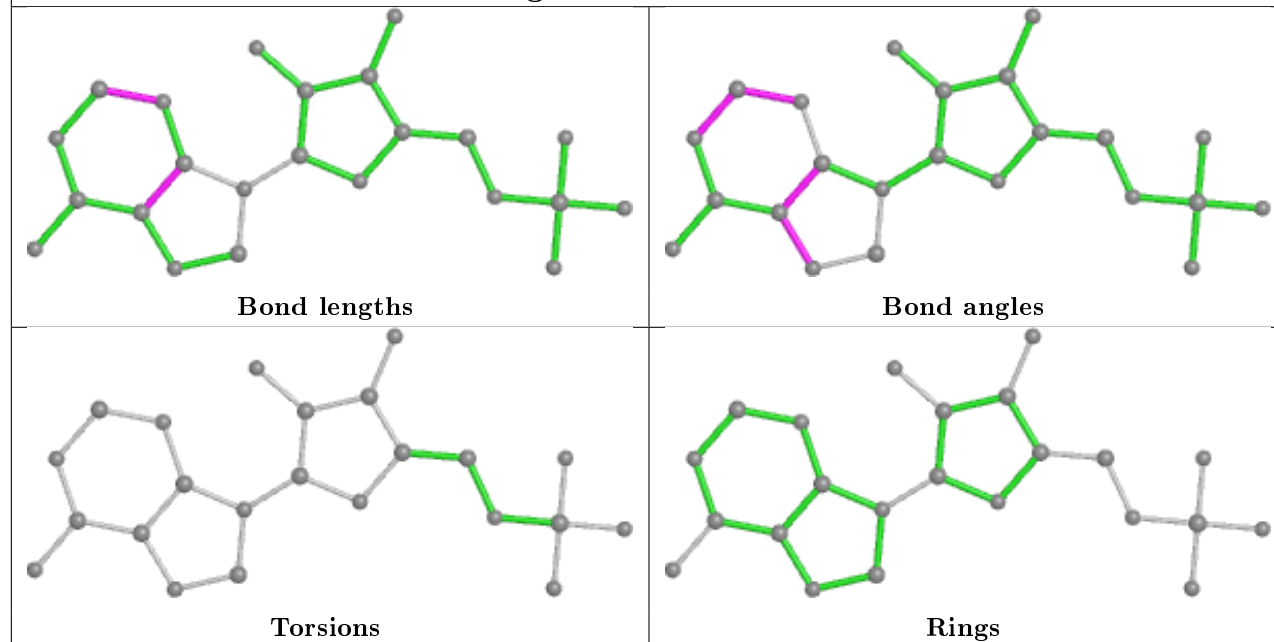
The following is a two-dimensional graphical depiction of Mogul quality analysis of bond lengths, bond angles, torsion angles, and ring geometry for all instances of the Ligand of Interest. In addition, ligands with molecular weight > 250 and outliers as shown on the validation Tables will also be included. For torsion angles, if less than 5% of the Mogul distribution of torsion angles is within 10 degrees of the torsion angle in question, then that torsion angle is considered an outlier. Any bond that is central to one or more torsion angles identified as an outlier by Mogul will be highlighted in the graph. For rings, the root-mean-square deviation (RMSD) between the ring in question and similar rings identified by Mogul is calculated over all ring torsion angles. If the average RMSD is greater than 60 degrees and the minimal RMSD between the ring in question and any Mogul-identified rings is also greater than 60 degrees, then that ring is considered an outlier. The outliers are highlighted in purple. The color gray indicates Mogul did not find sufficient equivalents in the CSD to analyse the geometry.

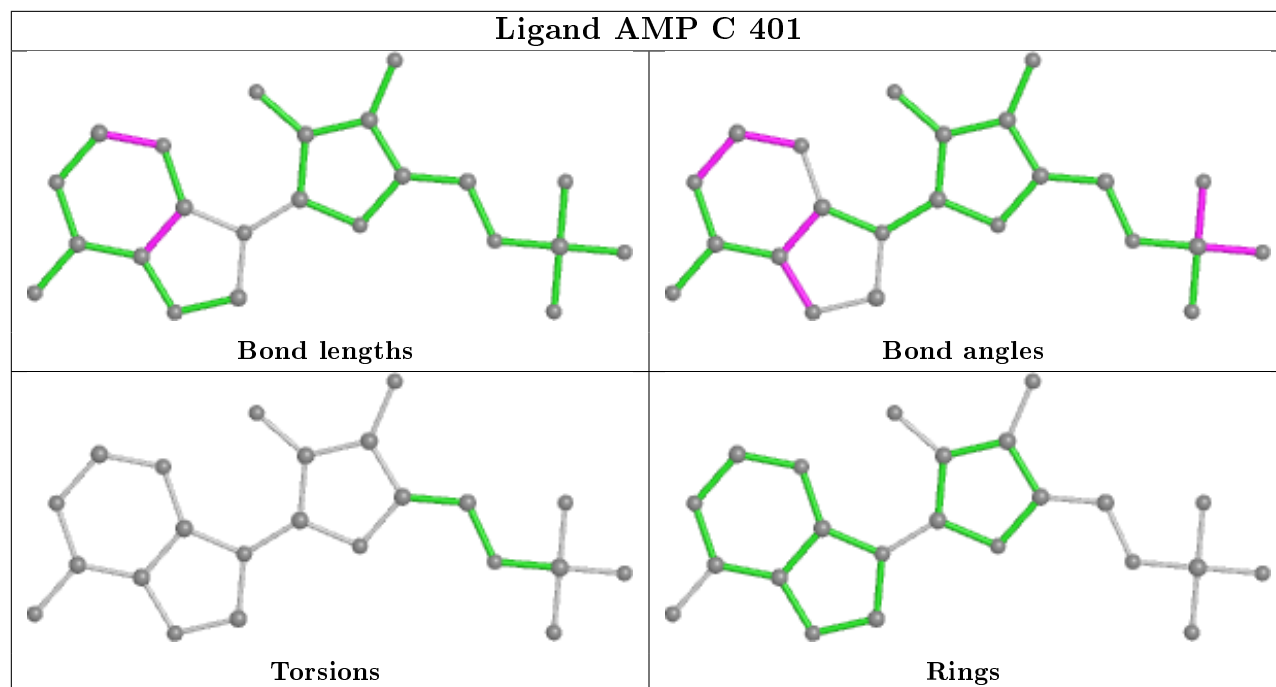


## Ligand AMP B 401



## Ligand AMP D 401





## 5.7 Other polymers [i](#)

There are no such residues in this entry.

## 5.8 Polymer linkage issues [i](#)

There are no chain breaks in this entry.

## 6 Fit of model and data ⓘ

### 6.1 Protein, DNA and RNA chains ⓘ

In the following table, the column labelled ‘#RSRZ> 2’ contains the number (and percentage) of RSRZ outliers, followed by percent RSRZ outliers for the chain as percentile scores relative to all X-ray entries and entries of similar resolution. The OWAB column contains the minimum, median, 95<sup>th</sup> percentile and maximum values of the occupancy-weighted average B-factor per residue. The column labelled ‘Q< 0.9’ lists the number of (and percentage) of residues with an average occupancy less than 0.9.

Mol	Chain	Analysed	<RSRZ>	#RSRZ>2	OWAB(Å <sup>2</sup> )	Q<0.9
1	A	327/353 (92%)	-0.26	8 (2%) 59 63	19, 28, 45, 63	0
1	B	323/353 (91%)	-0.06	10 (3%) 49 53	19, 29, 49, 60	0
1	C	320/353 (90%)	-0.15	5 (1%) 72 74	20, 29, 49, 66	0
1	D	327/353 (92%)	0.10	12 (3%) 41 45	21, 34, 56, 70	0
All	All	1297/1412 (91%)	-0.09	35 (2%) 54 59	19, 30, 51, 70	0

All (35) RSRZ outliers are listed below:

Mol	Chain	Res	Type	RSRZ
1	C	70	VAL	6.6
1	A	126	ILE	6.4
1	D	144	THR	5.4
1	B	126	ILE	4.9
1	D	66	THR	4.8
1	A	128	CYS	4.2
1	B	62	SER	4.0
1	D	236	ASN	3.8
1	C	236	ASN	3.8
1	A	64	ASN	3.7
1	D	63	THR	3.5
1	D	25	ARG	3.5
1	C	142	LYS	3.4
1	D	268	LYS	3.4
1	B	127	ASP	3.4
1	B	332	GLU	3.2
1	D	234	PRO	3.1
1	C	144	THR	2.8
1	A	66	THR	2.6
1	D	125	ASN	2.5
1	B	130	VAL	2.5

*Continued on next page...*

*Continued from previous page...*

Mol	Chain	Res	Type	RSRZ
1	A	65	VAL	2.4
1	B	234	PRO	2.4
1	C	335	SER	2.3
1	D	26	GLY	2.3
1	B	63	THR	2.2
1	B	333	LYS	2.2
1	D	331	TYR	2.2
1	B	123	SER	2.2
1	D	238	ALA	2.2
1	A	268	LYS	2.1
1	B	70	VAL	2.1
1	A	63	THR	2.1
1	D	64	ASN	2.0
1	A	62	SER	2.0

## 6.2 Non-standard residues in protein, DNA, RNA chains ⓘ

There are no non-standard protein/DNA/RNA residues in this entry.

## 6.3 Carbohydrates ⓘ

There are no monosaccharides in this entry.

## 6.4 Ligands ⓘ

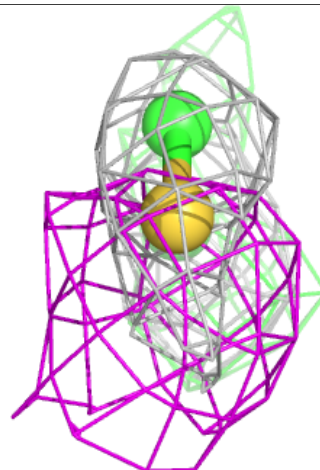
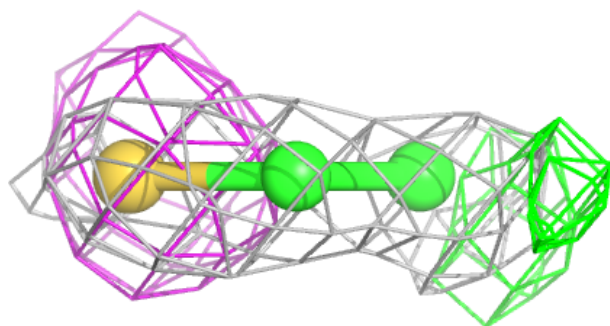
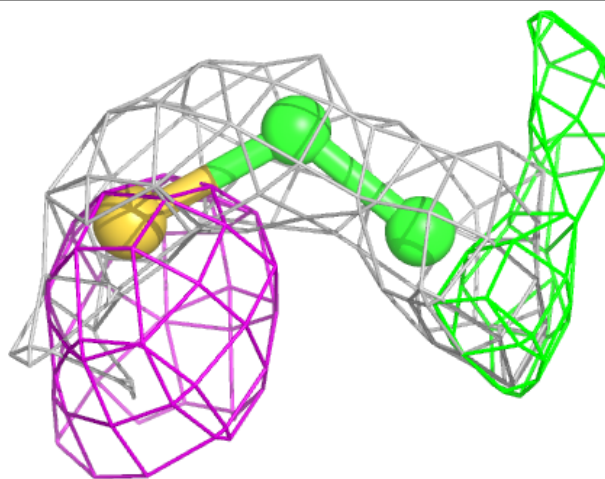
In the following table, the Atoms column lists the number of modelled atoms in the group and the number defined in the chemical component dictionary. The B-factors column lists the minimum, median, 95<sup>th</sup> percentile and maximum values of B factors of atoms in the group. The column labelled 'Q<0.9' lists the number of atoms with occupancy less than 0.9.

Mol	Type	Chain	Res	Atoms	RSCC	RSR	B-factors(Å <sup>2</sup> )	Q<0.9
2	EUF	A	401	3/13	0.39	0.34	45,45,46,71	0
3	AMP	D	401	23/23	0.88	0.21	34,46,50,53	0
4	MG	C	402	1/1	0.92	0.13	45,45,45,45	0
4	MG	D	402	1/1	0.94	0.14	41,41,41,41	0
3	AMP	B	401	23/23	0.94	0.20	34,41,49,51	0
3	AMP	C	401	23/23	0.94	0.19	27,40,43,47	0
3	AMP	A	402	23/23	0.95	0.10	30,37,42,44	0
4	MG	B	402	1/1	0.98	0.09	26,26,26,26	0
4	MG	A	403	1/1	1.00	0.10	19,19,19,19	0

The following is a graphical depiction of the model fit to experimental electron density of all instances of the Ligand of Interest. In addition, ligands with molecular weight > 250 and outliers as shown on the geometry validation Tables will also be included. Each fit is shown from different orientation to approximate a three-dimensional view.

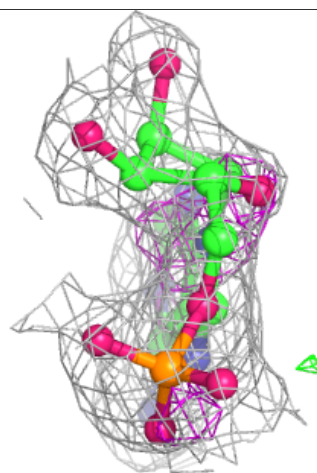
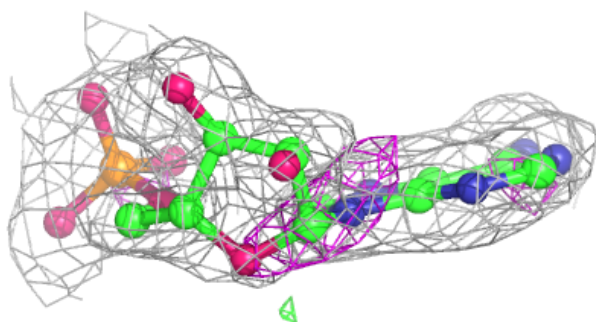
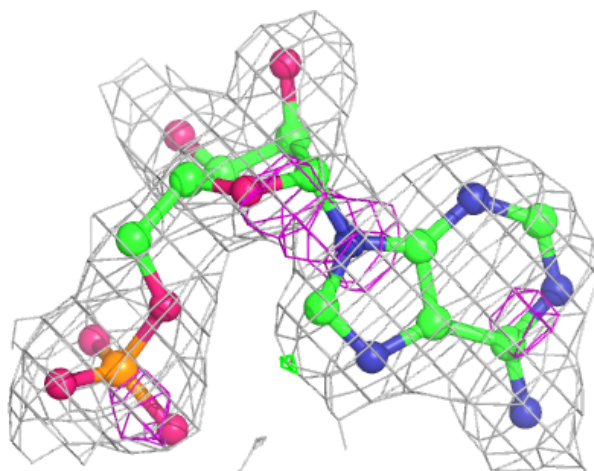
**Electron density around EUF A 401:**

$2mF_o-DF_c$  (at 0.7 rmsd) in gray  
 $mF_o-DF_c$  (at 3 rmsd) in purple (negative)  
and green (positive)



**Electron density around AMP D 401:**

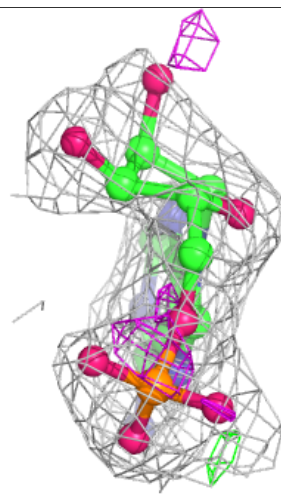
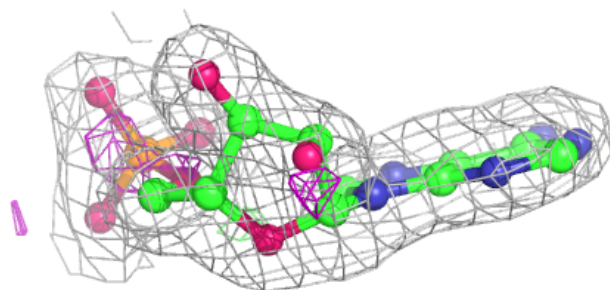
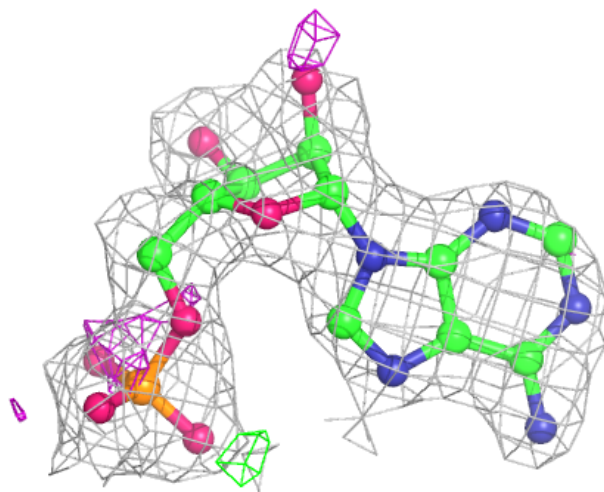
$2mF_o-DF_c$  (at 0.7 rmsd) in gray  
 $mF_o-DF_c$  (at 3 rmsd) in purple (negative)  
and green (positive)





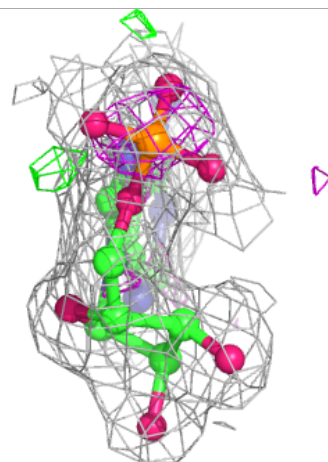
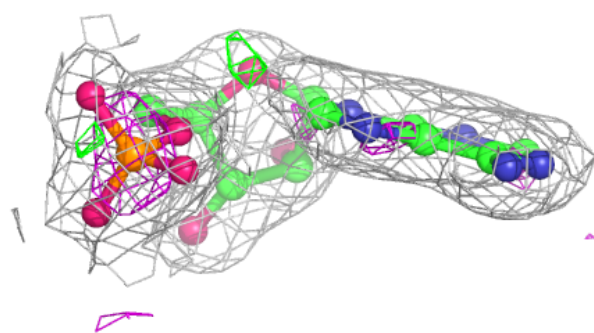
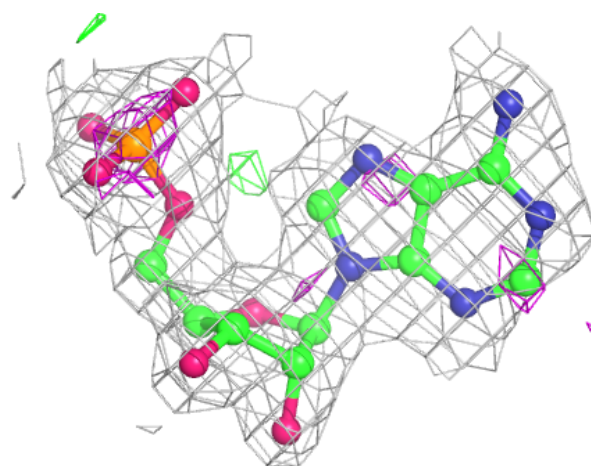
**Electron density around AMP B 401:**

$2mF_o-DF_c$  (at 0.7 rmsd) in gray  
 $mF_o-DF_c$  (at 3 rmsd) in purple (negative)  
and green (positive)



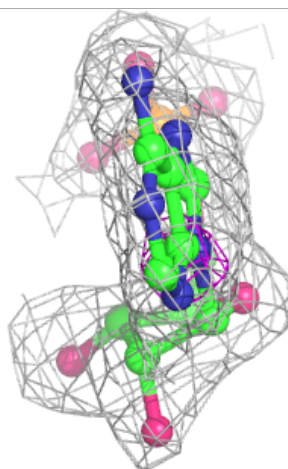
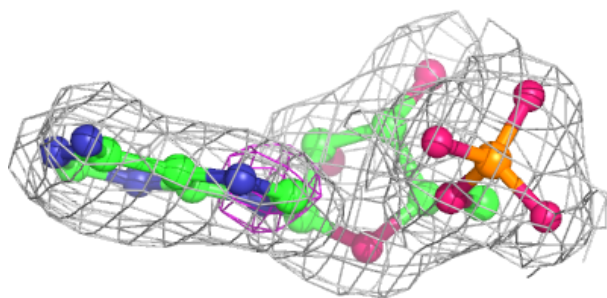
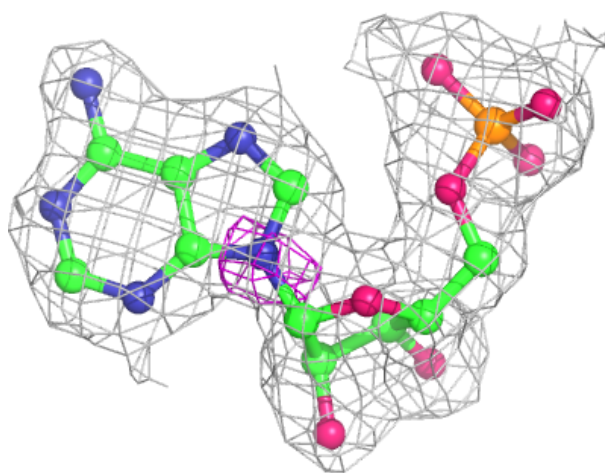
**Electron density around AMP C 401:**

$2mF_o-DF_c$  (at 0.7 rmsd) in gray  
 $mF_o-DF_c$  (at 3 rmsd) in purple (negative)  
and green (positive)



**Electron density around AMP A 402:**

$2mF_o-DF_c$  (at 0.7 rmsd) in gray  
 $mF_o-DF_c$  (at 3 rmsd) in purple (negative)  
and green (positive)



## 6.5 Other polymers [i](#)

There are no such residues in this entry.