



Full wwPDB X-ray Structure Validation Report ⓘ

Aug 17, 2021 – 08:03 AM EDT

PDB ID : 7LS3
Title : Co-complex CYP46A1 with 8114 (3f)
Authors : Lane, W.; Yano, J.
Deposited on : 2021-02-17
Resolution : 2.15 Å(reported)

This is a Full wwPDB X-ray Structure Validation Report for a publicly released PDB entry.

We welcome your comments at validation@mail.wwpdb.org

A user guide is available at

<https://www.wwpdb.org/validation/2017/XrayValidationReportHelp>

with specific help available everywhere you see the ⓘ symbol.

The following versions of software and data (see [references ⓘ](#)) were used in the production of this report:

MolProbity : 4.02b-467
Mogul : 1.8.5 (274361), CSD as541be (2020)
Xtriage (Phenix) : 1.13
EDS : 2.23.1
buster-report : 1.1.7 (2018)
Percentile statistics : 20191225.v01 (using entries in the PDB archive December 25th 2019)
Refmac : 5.8.0158
CCP4 : 7.0.044 (Gargrove)
Ideal geometry (proteins) : Engh & Huber (2001)
Ideal geometry (DNA, RNA) : Parkinson et al. (1996)
Validation Pipeline (wwPDB-VP) : 2.23.1

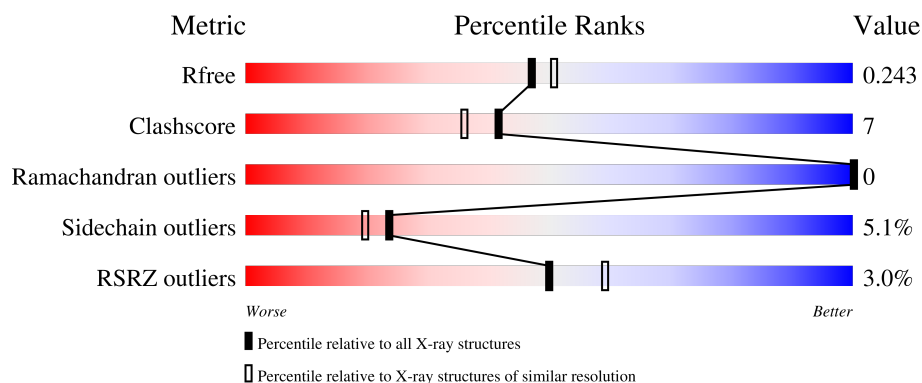
1 Overall quality at a glance

The following experimental techniques were used to determine the structure:

X-RAY DIFFRACTION

The reported resolution of this entry is 2.15 Å.

Percentile scores (ranging between 0-100) for global validation metrics of the entry are shown in the following graphic. The table shows the number of entries on which the scores are based.



Metric	Whole archive (#Entries)	Similar resolution (#Entries, resolution range(Å))
R_{free}	130704	1479 (2.16-2.16)
Clashscore	141614	1585 (2.16-2.16)
Ramachandran outliers	138981	1560 (2.16-2.16)
Sidechain outliers	138945	1559 (2.16-2.16)
RSRZ outliers	127900	1456 (2.16-2.16)

The table below summarises the geometric issues observed across the polymeric chains and their fit to the electron density. The red, orange, yellow and green segments of the lower bar indicate the fraction of residues that contain outliers for ≥ 3 , 2, 1 and 0 types of geometric quality criteria respectively. A grey segment represents the fraction of residues that are not modelled. The numeric value for each fraction is indicated below the corresponding segment, with a dot representing fractions $\leq 5\%$. The upper red bar (where present) indicates the fraction of residues that have poor fit to the electron density. The numeric value is given above the bar.

Mol	Chain	Length	Quality of chain
1	A	474	

2 Entry composition [i](#)

There are 4 unique types of molecules in this entry. The entry contains 3704 atoms, of which 0 are hydrogens and 0 are deuteriums.

In the tables below, the ZeroOcc column contains the number of atoms modelled with zero occupancy, the AltConf column contains the number of residues with at least one atom in alternate conformation and the Trace column contains the number of residues modelled with at most 2 atoms.

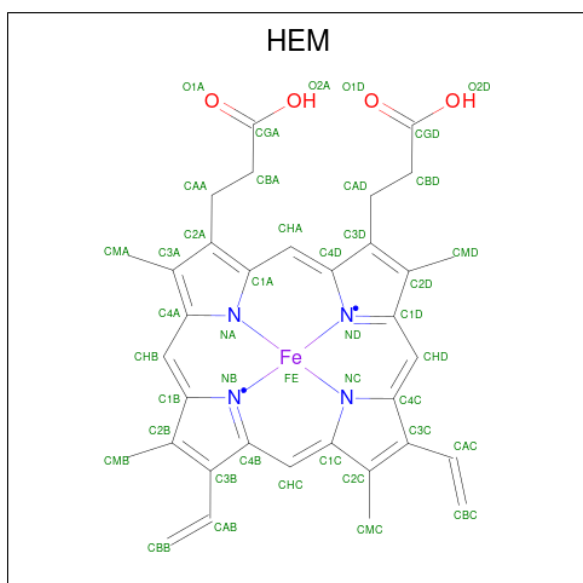
- Molecule 1 is a protein called Cholesterol 24-hydroxylase.

Mol	Chain	Residues	Atoms					ZeroOcc	AltConf	Trace
			Total	C	N	O	S			
1	A	429	3447	2204	598	628	17	0	0	0

There are 7 discrepancies between the modelled and reference sequences:

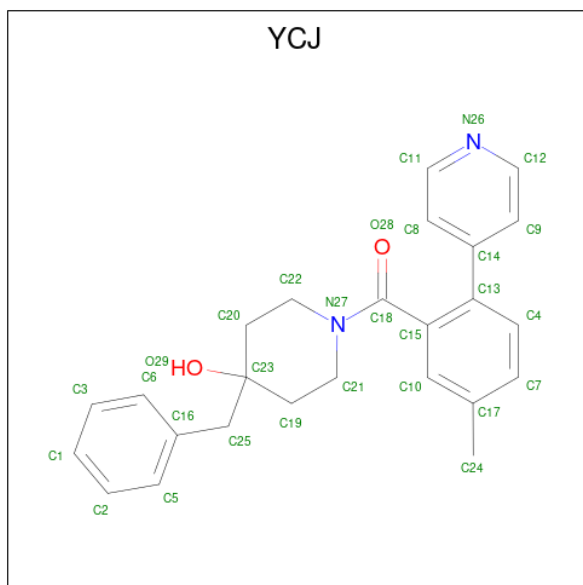
Chain	Residue	Modelled	Actual	Comment	Reference
A	21	MET	-	initiating methionine	UNP Q9Y6A2
A	22	HIS	-	expression tag	UNP Q9Y6A2
A	23	HIS	-	expression tag	UNP Q9Y6A2
A	24	HIS	-	expression tag	UNP Q9Y6A2
A	25	HIS	-	expression tag	UNP Q9Y6A2
A	26	HIS	-	expression tag	UNP Q9Y6A2
A	27	HIS	-	expression tag	UNP Q9Y6A2

- Molecule 2 is PROTOPORPHYRIN IX CONTAINING FE (three-letter code: HEM) (formula: $C_{34}H_{32}FeN_4O_4$).



Mol	Chain	Residues	Atoms				ZeroOcc	AltConf
2	A	1	Total	C	Fe	N	O	
			43	34	1	4	4	
							0	0

- Molecule 3 is (5-methyl-2-pyridin-4-yl-phenyl)-[4-oxidanyl-4-(phenylmethyl)piperidin-1-yl]methanone (three-letter code: YCJ) (formula: C₂₅H₂₆N₂O₂) (labeled as "Ligand of Interest" by depositor).



Mol	Chain	Residues	Atoms				ZeroOcc	AltConf
3	A	1	Total	C	N	O		
			29	25	2	2		
							0	0

- Molecule 4 is water.

Mol	Chain	Residues	Atoms		ZeroOcc	AltConf
4	A	185	Total	O		
			185	185		
					0	0

- Molecule 1: Cholesterol 24-hydroxylase

4 Data and refinement statistics

Property	Value	Source
Space group	P 21 21 21	Depositor
Cell constants a, b, c, α , β , γ	58.35Å 63.60Å 123.11Å 90.00° 90.00° 90.00°	Depositor
Resolution (Å)	35.25 – 2.15 35.25 – 2.15	Depositor EDS
% Data completeness (in resolution range)	95.8 (35.25-2.15) 95.9 (35.25-2.15)	Depositor EDS
R_{merge}	(Not available)	Depositor
R_{sym}	0.10	Depositor
$\langle I/\sigma(I) \rangle$ ¹	2.10 (at 2.16Å)	Xtriage
Refinement program	REFMAC 5.8.0267	Depositor
R, R_{free}	0.194 , 0.244 0.194 , 0.243	Depositor DCC
R_{free} test set	1236 reflections (5.06%)	wwPDB-VP
Wilson B-factor (Å ²)	30.5	Xtriage
Anisotropy	0.289	Xtriage
Bulk solvent k_{sol} (e/Å ³), B_{sol} (Å ²)	0.34 , 39.3	EDS
L-test for twinning ²	$\langle L \rangle = 0.49$, $\langle L^2 \rangle = 0.33$	Xtriage
Estimated twinning fraction	No twinning to report.	Xtriage
F_o, F_c correlation	0.95	EDS
Total number of atoms	3704	wwPDB-VP
Average B, all atoms (Å ²)	38.0	wwPDB-VP

Xtriage's analysis on translational NCS is as follows: *The largest off-origin peak in the Patterson function is 6.51% of the height of the origin peak. No significant pseudotranslation is detected.*

¹Intensities estimated from amplitudes.

²Theoretical values of $\langle |L| \rangle$, $\langle L^2 \rangle$ for acentric reflections are 0.5, 0.333 respectively for untwinned datasets, and 0.375, 0.2 for perfectly twinned datasets.

5 Model quality

5.1 Standard geometry

Bond lengths and bond angles in the following residue types are not validated in this section: HEM, YCJ

The Z score for a bond length (or angle) is the number of standard deviations the observed value is removed from the expected value. A bond length (or angle) with $|Z| > 5$ is considered an outlier worth inspection. RMSZ is the root-mean-square of all Z scores of the bond lengths (or angles).

Mol	Chain	Bond lengths		Bond angles	
		RMSZ	$\# Z > 5$	RMSZ	$\# Z > 5$
1	A	0.61	7/3516 (0.2%)	0.78	4/4744 (0.1%)

All (7) bond length outliers are listed below:

Mol	Chain	Res	Type	Atoms	Z	Observed(Å)	Ideal(Å)
1	A	384	ARG	CD-NE	9.24	1.62	1.46
1	A	267	ARG	C-N	9.09	1.49	1.33
1	A	269	GLU	C-O	6.52	1.35	1.23
1	A	384	ARG	NE-CZ	6.25	1.41	1.33
1	A	262	ARG	CZ-NH1	-6.07	1.25	1.33
1	A	33	ILE	CA-C	5.76	1.68	1.52
1	A	384	ARG	CZ-NH2	-5.64	1.25	1.33

All (4) bond angle outliers are listed below:

Mol	Chain	Res	Type	Atoms	Z	Observed(°)	Ideal(°)
1	A	262	ARG	NE-CZ-NH2	7.10	123.85	120.30
1	A	384	ARG	NE-CZ-NH2	-6.97	116.82	120.30
1	A	262	ARG	NE-CZ-NH1	-6.65	116.97	120.30
1	A	76	ARG	CG-CD-NE	-5.18	100.92	111.80

There are no chirality outliers.

There are no planarity outliers.

5.2 Too-close contacts

In the following table, the Non-H and H(model) columns list the number of non-hydrogen atoms and hydrogen atoms in the chain respectively. The H(added) column lists the number of hydrogen atoms added and optimized by MolProbity. The Clashes column lists the number of clashes within

the asymmetric unit, whereas Symm-Clashes lists symmetry-related clashes.

Mol	Chain	Non-H	H(model)	H(added)	Clashes	Symm-Clashes
1	A	3447	0	3479	46	0
2	A	43	0	30	2	0
3	A	29	0	0	1	0
4	A	185	0	0	5	0
All	All	3704	0	3509	49	0

The all-atom clashscore is defined as the number of clashes found per 1000 atoms (including hydrogen atoms). The all-atom clashscore for this structure is 7.

All (49) close contacts within the same asymmetric unit are listed below, sorted by their clash magnitude.

Atom-1	Atom-2	Interatomic distance (Å)	Clash overlap (Å)
1:A:241:ARG:HH22	1:A:248:ARG:HH22	1.19	0.91
1:A:406:GLU:CD	1:A:406:GLU:H	1.70	0.91
1:A:80:PHE:O	1:A:82:LYS:N	2.03	0.90
1:A:368:TRP:HZ3	1:A:392:LEU:HD11	1.41	0.85
1:A:368:TRP:CZ3	1:A:392:LEU:HD11	2.21	0.75
1:A:181:GLN:O	1:A:185:THR:CG2	2.38	0.71
1:A:181:GLN:O	1:A:185:THR:HG22	1.92	0.70
1:A:250:LEU:HD23	1:A:297:VAL:HG13	1.76	0.68
1:A:241:ARG:NH2	1:A:248:ARG:HH22	1.90	0.67
1:A:392:LEU:HD12	1:A:393:PHE:N	2.12	0.65
1:A:406:GLU:CD	1:A:406:GLU:N	2.49	0.59
1:A:241:ARG:NH2	1:A:248:ARG:HH12	2.00	0.58
1:A:217:LEU:HD22	1:A:242:GLU:HB3	1.86	0.57
1:A:203:MET:HE3	1:A:212:SER:HB2	1.88	0.56
1:A:181:GLN:O	1:A:185:THR:HG23	2.06	0.54
1:A:110:ARG:HG2	4:A:751:HOH:O	2.08	0.54
1:A:265:LEU:HD23	1:A:271:VAL:HG21	1.90	0.54
1:A:250:LEU:CD2	1:A:297:VAL:HG13	2.38	0.53
1:A:281:LYS:O	1:A:284:GLU:HG3	2.09	0.53
3:A:502:YCJ:C18	3:A:502:YCJ:C9	2.86	0.52
1:A:161:ALA:HB3	1:A:453:LYS:HE2	1.91	0.52
1:A:265:LEU:CD2	1:A:271:VAL:HG21	2.40	0.51
1:A:281:LYS:HD2	1:A:284:GLU:OE2	2.11	0.51
1:A:203:MET:CE	1:A:212:SER:HB2	2.40	0.50
2:A:501:HEM:HBB2	2:A:501:HEM:HMB2	1.94	0.50
1:A:473:GLN:HB3	4:A:638:HOH:O	2.13	0.49
1:A:241:ARG:NH2	1:A:248:ARG:NH2	2.60	0.49
1:A:335:VAL:HG23	1:A:336:ILE:HG23	1.95	0.49

Continued on next page...

Continued from previous page...

Atom-1	Atom-2	Interatomic distance (Å)	Clash overlap (Å)
1:A:209:LYS:N	1:A:210:PRO:CD	2.77	0.48
1:A:392:LEU:HD12	1:A:392:LEU:C	2.33	0.47
1:A:241:ARG:HH22	1:A:248:ARG:NH2	2.00	0.47
1:A:239:GLN:O	1:A:243:VAL:HG23	2.16	0.45
1:A:403:THR:HG23	4:A:682:HOH:O	2.17	0.45
1:A:336:ILE:O	1:A:339:LYS:HB2	2.17	0.45
1:A:61:GLN:HB3	1:A:396:TYR:CD1	2.52	0.45
1:A:36:PRO:HG3	1:A:67:TRP:CE2	2.53	0.44
1:A:65:LEU:CD1	1:A:69:LYS:HD2	2.48	0.44
1:A:485:THR:C	1:A:486:LEU:HD12	2.38	0.44
1:A:110:ARG:HD2	1:A:110:ARG:HA	1.75	0.44
1:A:471:GLN:HG3	1:A:477:LYS:HG2	2.01	0.43
1:A:306:THR:HG22	1:A:366:PRO:HB2	2.00	0.42
2:A:501:HEM:HBB2	2:A:501:HEM:CMB	2.48	0.42
1:A:199:MET:HG3	1:A:257:TRP:CD2	2.54	0.42
1:A:477:LYS:HD3	4:A:714:HOH:O	2.19	0.42
1:A:430:PHE:CG	1:A:440:GLN:HG3	2.55	0.41
1:A:69:LYS:HE3	4:A:663:HOH:O	2.19	0.41
1:A:241:ARG:NH2	1:A:248:ARG:NH1	2.67	0.41
1:A:264:ALA:O	1:A:268:GLY:N	2.55	0.40
1:A:204:LEU:HD23	1:A:204:LEU:HA	1.92	0.40

There are no symmetry-related clashes.

5.3 Torsion angles [i](#)

5.3.1 Protein backbone [i](#)

In the following table, the Percentiles column shows the percent Ramachandran outliers of the chain as a percentile score with respect to all X-ray entries followed by that with respect to entries of similar resolution.

The Analysed column shows the number of residues for which the backbone conformation was analysed, and the total number of residues.

Mol	Chain	Analysed	Favoured	Allowed	Outliers	Percentiles	
1	A	421/474 (89%)	410 (97%)	11 (3%)	0	100	100

There are no Ramachandran outliers to report.

5.3.2 Protein sidechains ⓘ

In the following table, the Percentiles column shows the percent sidechain outliers of the chain as a percentile score with respect to all X-ray entries followed by that with respect to entries of similar resolution.

The Analysed column shows the number of residues for which the sidechain conformation was analysed, and the total number of residues.

Mol	Chain	Analysed	Rotameric	Outliers	Percentiles	
1	A	374/414 (90%)	355 (95%)	19 (5%)	24	20

All (19) residues with a non-rotameric sidechain are listed below:

Mol	Chain	Res	Type
1	A	59	VAL
1	A	132	GLU
1	A	185	THR
1	A	192	LEU
1	A	241	ARG
1	A	266	LYS
1	A	267	ARG
1	A	271	VAL
1	A	279	ILE
1	A	290	GLU
1	A	305	GLU
1	A	388	ASN
1	A	392	LEU
1	A	403	THR
1	A	406	GLU
1	A	422	LYS
1	A	424	ARG
1	A	442	PHE
1	A	473	GLN

Sometimes sidechains can be flipped to improve hydrogen bonding and reduce clashes. All (2) such sidechains are listed below:

Mol	Chain	Res	Type
1	A	388	ASN
1	A	473	GLN

5.3.3 RNA ⓘ

There are no RNA molecules in this entry.

5.4 Non-standard residues in protein, DNA, RNA chains ⓘ

There are no non-standard protein/DNA/RNA residues in this entry.

5.5 Carbohydrates ⓘ

There are no monosaccharides in this entry.

5.6 Ligand geometry ⓘ

2 ligands are modelled in this entry.

In the following table, the Counts columns list the number of bonds (or angles) for which Mogul statistics could be retrieved, the number of bonds (or angles) that are observed in the model and the number of bonds (or angles) that are defined in the Chemical Component Dictionary. The Link column lists molecule types, if any, to which the group is linked. The Z score for a bond length (or angle) is the number of standard deviations the observed value is removed from the expected value. A bond length (or angle) with $|Z| > 2$ is considered an outlier worth inspection. RMSZ is the root-mean-square of all Z scores of the bond lengths (or angles).

Mol	Type	Chain	Res	Link	Bond lengths			Bond angles		
					Counts	RMSZ	# Z > 2	Counts	RMSZ	# Z > 2
2	HEM	A	501	1,3	27,50,50	1.01	3 (11%)	17,82,82	1.76	3 (17%)
3	YCJ	A	502	2	31,32,32	0.89	2 (6%)	39,45,45	1.07	2 (5%)

In the following table, the Chirals column lists the number of chiral outliers, the number of chiral centers analysed, the number of these observed in the model and the number defined in the Chemical Component Dictionary. Similar counts are reported in the Torsion and Rings columns. '-' means no outliers of that kind were identified.

Mol	Type	Chain	Res	Link	Chirals	Torsions	Rings
2	HEM	A	501	1,3	-	0/6/54/54	-
3	YCJ	A	502	2	-	4/17/29/29	0/4/4/4

All (5) bond length outliers are listed below:

Mol	Chain	Res	Type	Atoms	Z	Observed(Å)	Ideal(Å)
2	A	501	HEM	C4D-C3D	2.46	1.48	1.42

Continued on next page...

Continued from previous page...

Mol	Chain	Res	Type	Atoms	Z	Observed(Å)	Ideal(Å)
3	A	502	YCJ	C13-C14	-2.44	1.45	1.49
3	A	502	YCJ	C15-C18	-2.33	1.47	1.50
2	A	501	HEM	C3B-C2B	-2.06	1.37	1.40
2	A	501	HEM	C4A-NA	2.04	1.40	1.36

All (5) bond angle outliers are listed below:

Mol	Chain	Res	Type	Atoms	Z	Observed(°)	Ideal(°)
2	A	501	HEM	CBA-CAA-C2A	-4.48	104.22	112.49
3	A	502	YCJ	C19-C23-C20	3.24	113.64	109.85
3	A	502	YCJ	C10-C15-C13	2.46	122.39	119.96
2	A	501	HEM	CMC-C2C-C3C	2.41	129.18	124.68
2	A	501	HEM	CBD-CAD-C3D	-2.38	108.09	112.48

There are no chirality outliers.

All (4) torsion outliers are listed below:

Mol	Chain	Res	Type	Atoms
3	A	502	YCJ	C15-C13-C14-C8
3	A	502	YCJ	C15-C13-C14-C9
3	A	502	YCJ	C4-C13-C14-C8
3	A	502	YCJ	C4-C13-C14-C9

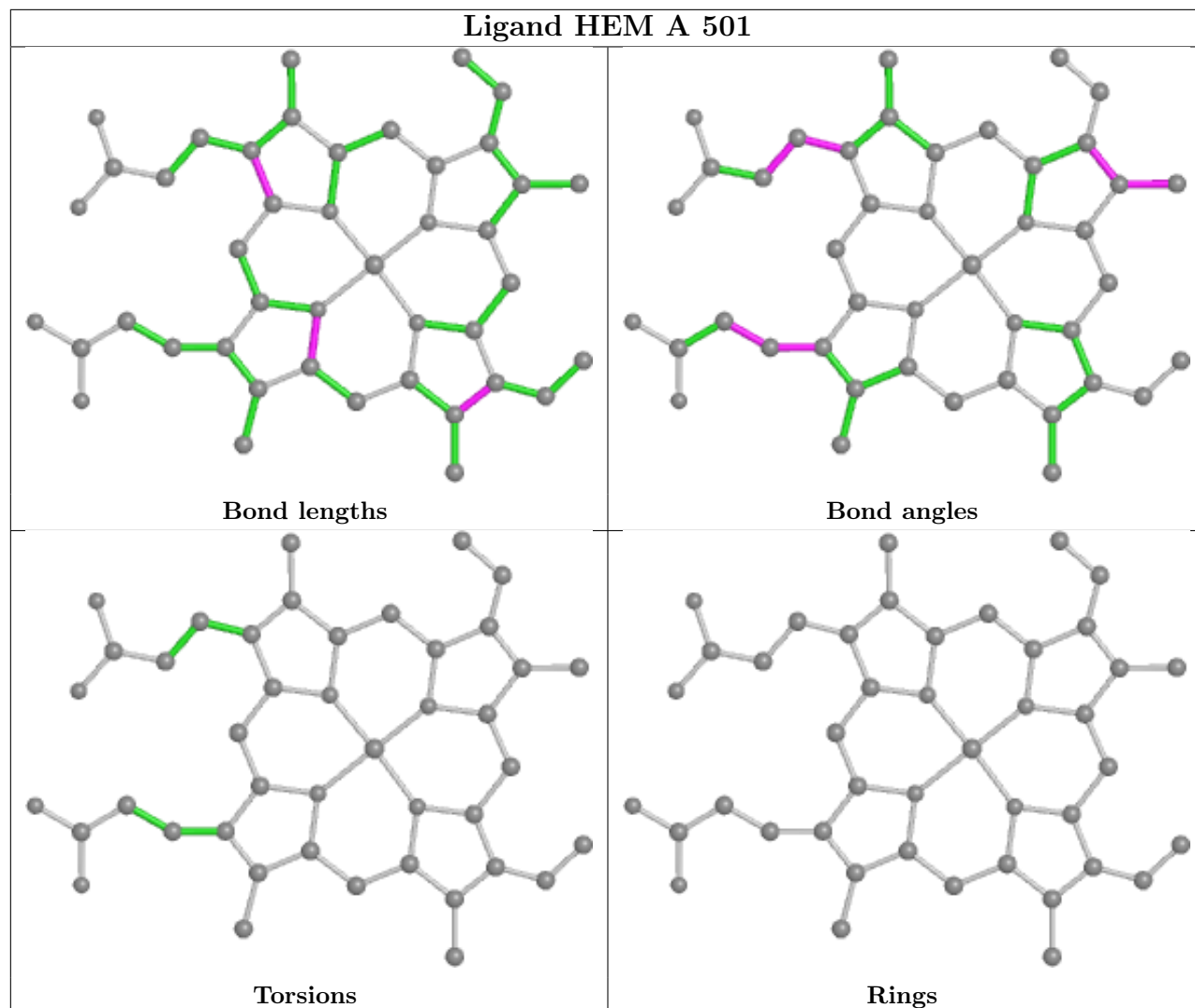
There are no ring outliers.

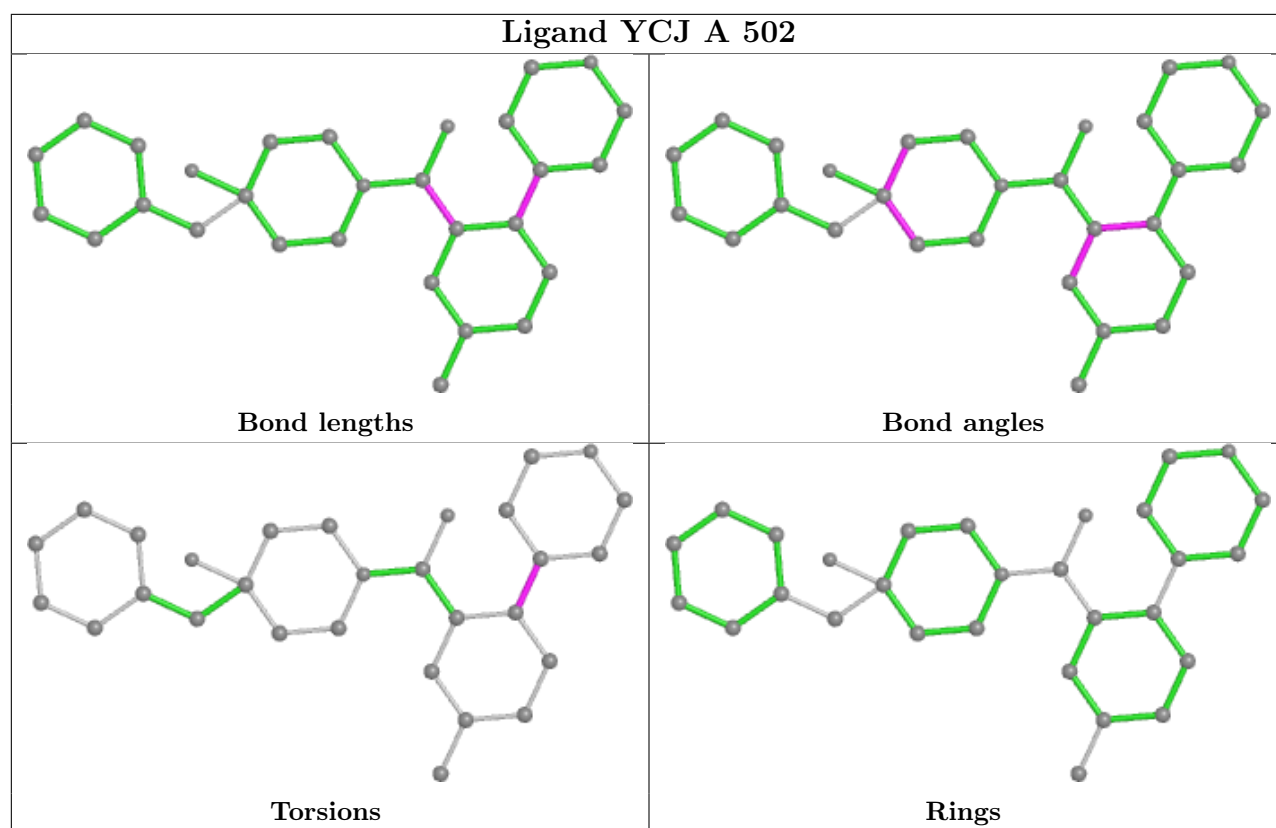
2 monomers are involved in 3 short contacts:

Mol	Chain	Res	Type	Clashes	Symm-Clashes
2	A	501	HEM	2	0
3	A	502	YCJ	1	0

The following is a two-dimensional graphical depiction of Mogul quality analysis of bond lengths, bond angles, torsion angles, and ring geometry for all instances of the Ligand of Interest. In addition, ligands with molecular weight > 250 and outliers as shown on the validation Tables will also be included. For torsion angles, if less than 5% of the Mogul distribution of torsion angles is within 10 degrees of the torsion angle in question, then that torsion angle is considered an outlier. Any bond that is central to one or more torsion angles identified as an outlier by Mogul will be highlighted in the graph. For rings, the root-mean-square deviation (RMSD) between the ring in question and similar rings identified by Mogul is calculated over all ring torsion angles. If the average RMSD is greater than 60 degrees and the minimal RMSD between the ring in question and any Mogul-identified rings is also greater than 60 degrees, then that ring is considered an outlier. The outliers are highlighted in purple. The color gray indicates Mogul did not find sufficient

equivalents in the CSD to analyse the geometry.





5.7 Other polymers [i](#)

There are no such residues in this entry.

5.8 Polymer linkage issues [i](#)

There are no chain breaks in this entry.

6 Fit of model and data [i](#)

6.1 Protein, DNA and RNA chains [i](#)

In the following table, the column labelled ‘#RSRZ > 2’ contains the number (and percentage) of RSRZ outliers, followed by percent RSRZ outliers for the chain as percentile scores relative to all X-ray entries and entries of similar resolution. The OWAB column contains the minimum, median, 95th percentile and maximum values of the occupancy-weighted average B-factor per residue. The column labelled ‘Q < 0.9’ lists the number of (and percentage) of residues with an average occupancy less than 0.9.

Mol	Chain	Analysed	<RSRZ>	#RSRZ>2	OWAB(Å ²)	Q<0.9
1	A	429/474 (90%)	-0.05	13 (3%) 50 59	19, 34, 64, 85	0

All (13) RSRZ outliers are listed below:

Mol	Chain	Res	Type	RSRZ
1	A	287	GLN	4.3
1	A	80	PHE	3.5
1	A	285	GLY	3.4
1	A	37	PRO	3.0
1	A	241	ARG	2.7
1	A	338	SER	2.7
1	A	259	GLN	2.6
1	A	267	ARG	2.6
1	A	269	GLU	2.1
1	A	266	LYS	2.1
1	A	260	ARG	2.1
1	A	460	PHE	2.0
1	A	286	ALA	2.0

6.2 Non-standard residues in protein, DNA, RNA chains [i](#)

There are no non-standard protein/DNA/RNA residues in this entry.

6.3 Carbohydrates [i](#)

There are no monosaccharides in this entry.

6.4 Ligands [i](#)

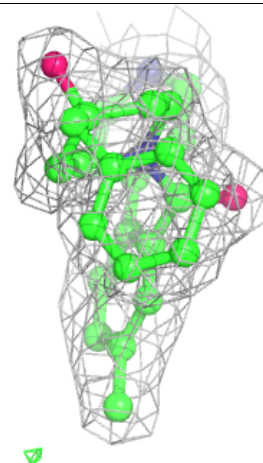
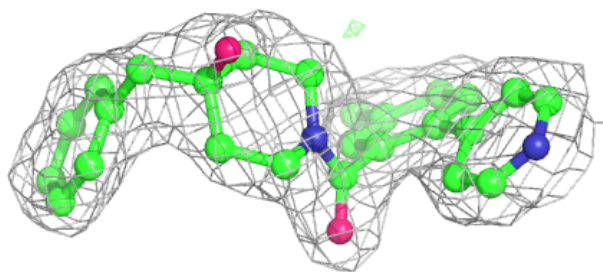
In the following table, the Atoms column lists the number of modelled atoms in the group and the number defined in the chemical component dictionary. The B-factors column lists the minimum, median, 95th percentile and maximum values of B factors of atoms in the group. The column labelled 'Q < 0.9' lists the number of atoms with occupancy less than 0.9.

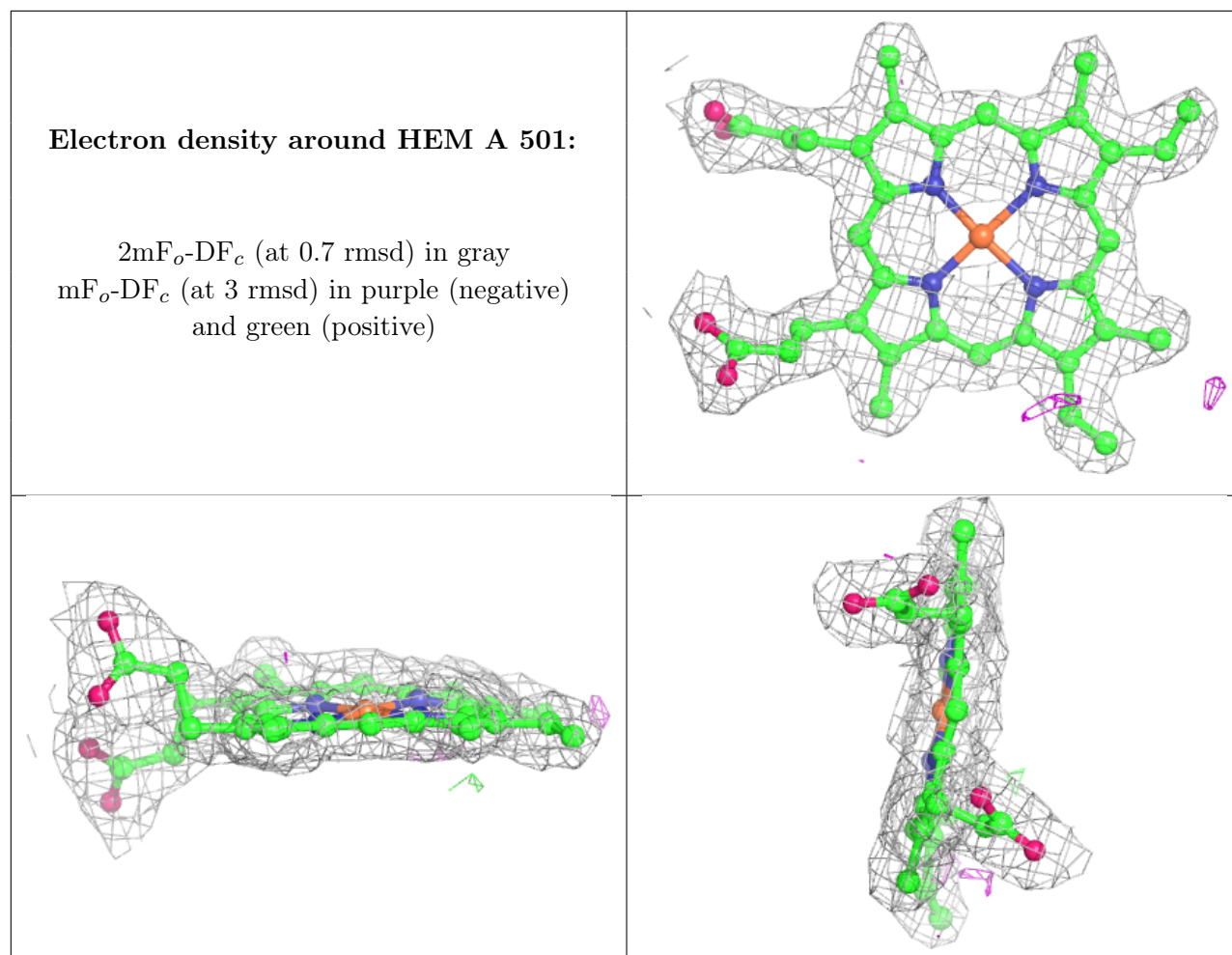
Mol	Type	Chain	Res	Atoms	RSCC	RSR	B-factors(Å ²)	Q<0.9
3	YCJ	A	502	29/29	0.97	0.12	18,22,25,25	0
2	HEM	A	501	43/43	0.98	0.14	19,20,25,28	0

The following is a graphical depiction of the model fit to experimental electron density of all instances of the Ligand of Interest. In addition, ligands with molecular weight > 250 and outliers as shown on the geometry validation Tables will also be included. Each fit is shown from different orientation to approximate a three-dimensional view.

Electron density around YCJ A 502:

2mF_o-DF_c (at 0.7 rmsd) in gray
mF_o-DF_c (at 3 rmsd) in purple (negative)
and green (positive)





6.5 Other polymers [i](#)

There are no such residues in this entry.