



Full wwPDB X-ray Structure Validation Report ⓘ

Feb 2, 2021 – 02:10 PM JST

PDB ID : 6LTQ
Title : Crystal structure of pyrrolidone carboxyl peptidase from thermophilic keratin degrading bacterium *Fervidobacterium islandicum* AW-1 (FiPcp)
Authors : Dhanasingh, I.; Jin, H.S.; Lee, D.W.; Lee, S.H.
Deposited on : 2020-01-23
Resolution : 1.85 Å(reported)

This is a Full wwPDB X-ray Structure Validation Report for a publicly released PDB entry.

We welcome your comments at validation@mail.wwpdb.org

A user guide is available at

<https://www.wwpdb.org/validation/2017/XrayValidationReportHelp>

with specific help available everywhere you see the ⓘ symbol.

The following versions of software and data (see [references ⓘ](#)) were used in the production of this report:

MolProbity	:	4.02b-467
Mogul	:	1.8.5 (274361), CSD as541be (2020)
Xtriage (Phenix)	:	1.13
EDS	:	2.16
Percentile statistics	:	20191225.v01 (using entries in the PDB archive December 25th 2019)
Refmac	:	5.8.0158
CCP4	:	7.0.044 (Gargrove)
Ideal geometry (proteins)	:	Engh & Huber (2001)
Ideal geometry (DNA, RNA)	:	Parkinson et al. (1996)
Validation Pipeline (wwPDB-VP)	:	2.16

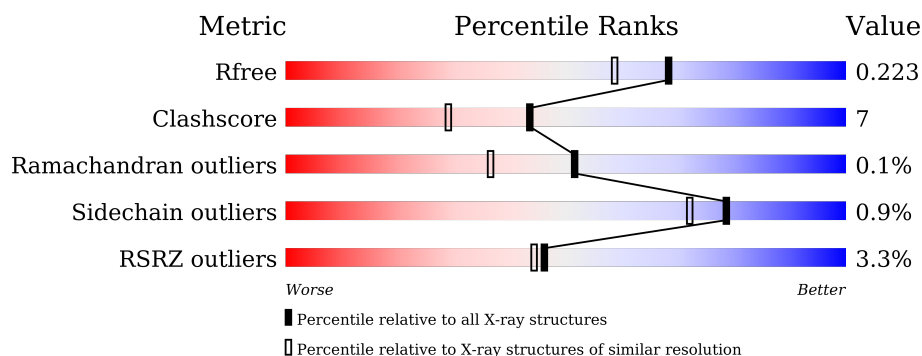
1 Overall quality at a glance

The following experimental techniques were used to determine the structure:

X-RAY DIFFRACTION

The reported resolution of this entry is 1.85 Å.

Percentile scores (ranging between 0-100) for global validation metrics of the entry are shown in the following graphic. The table shows the number of entries on which the scores are based.



Metric	Whole archive (#Entries)	Similar resolution (#Entries, resolution range(Å))
R_{free}	130704	2469 (1.86-1.86)
Clashscore	141614	2625 (1.86-1.86)
Ramachandran outliers	138981	2592 (1.86-1.86)
Sidechain outliers	138945	2592 (1.86-1.86)
RSRZ outliers	127900	2436 (1.86-1.86)

The table below summarises the geometric issues observed across the polymeric chains and their fit to the electron density. The red, orange, yellow and green segments of the lower bar indicate the fraction of residues that contain outliers for ≥ 3 , 2, 1 and 0 types of geometric quality criteria respectively. A grey segment represents the fraction of residues that are not modelled. The numeric value for each fraction is indicated below the corresponding segment, with a dot representing fractions $\leq 5\%$. The upper red bar (where present) indicates the fraction of residues that have poor fit to the electron density. The numeric value is given above the bar.

Mol	Chain	Length	Quality of chain
1	A	221	<div> <div>2%</div> <div> <div></div> <div>84%</div> <div>10%</div> <div>5%</div> </div> </div>
1	B	221	<div> <div>2%</div> <div> <div></div> <div>81%</div> <div>12%</div> <div>5%</div> </div> </div>
1	C	221	<div> <div>2%</div> <div> <div></div> <div>86%</div> <div>8%</div> <div>6%</div> </div> </div>
1	D	221	<div> <div>7%</div> <div> <div></div> <div>79%</div> <div>16%</div> <div>• •</div> </div> </div>

The following table lists non-polymeric compounds, carbohydrate monomers and non-standard residues in protein, DNA, RNA chains that are outliers for geometric or electron-density-fit crite-

ria:

Mol	Type	Chain	Res	Chirality	Geometry	Clashes	Electron density
2	GOL	A	302	-	-	-	X
2	GOL	C	302	-	-	X	-

2 Entry composition [i](#)

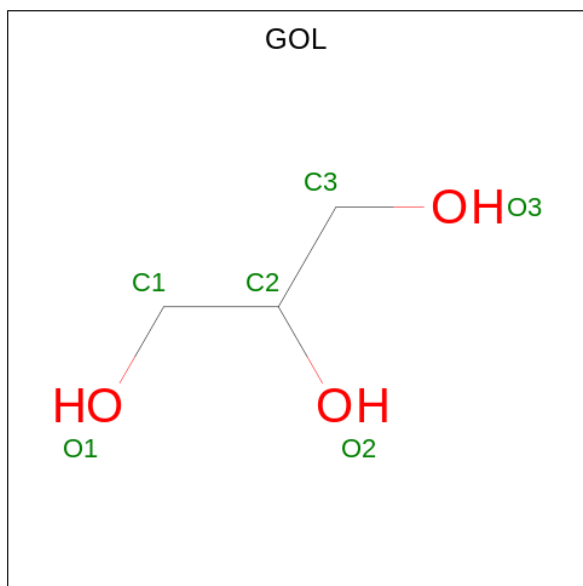
There are 4 unique types of molecules in this entry. The entry contains 7545 atoms, of which 0 are hydrogens and 0 are deuteriums.

In the tables below, the ZeroOcc column contains the number of atoms modelled with zero occupancy, the AltConf column contains the number of residues with at least one atom in alternate conformation and the Trace column contains the number of residues modelled with at most 2 atoms.

- Molecule 1 is a protein called Pyroglutamyl-peptidase I.

Mol	Chain	Residues	Atoms					ZeroOcc	AltConf	Trace
1	A	210	Total	C	N	O	S	0	1	0
			1666	1073	282	307	4			
1	B	209	Total	C	N	O	S	0	1	0
			1661	1071	280	306	4			
1	C	208	Total	C	N	O	S	0	0	0
			1646	1061	278	303	4			
1	D	215	Total	C	N	O	S	0	1	0
			1699	1092	286	317	4			

- Molecule 2 is GLYCEROL (three-letter code: GOL) (formula: C₃H₈O₃).



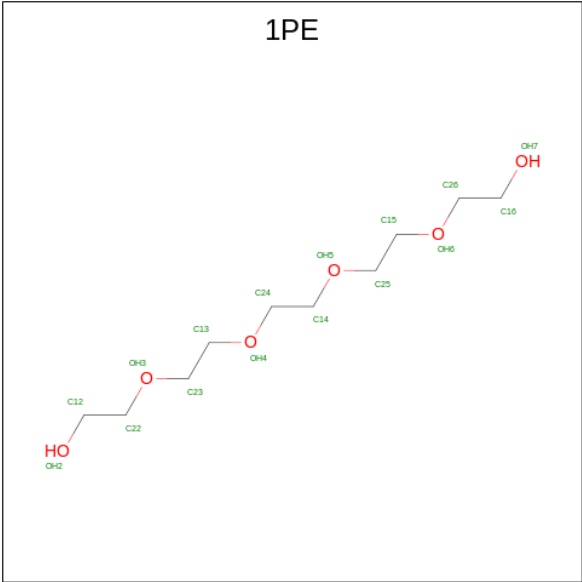
Mol	Chain	Residues	Atoms			ZeroOcc	AltConf
2	A	1	Total	C	O	0	0
			6	3	3		
2	A	1	Total	C	O	0	0
			6	3	3		

Continued on next page...

Continued from previous page...

Mol	Chain	Residues	Atoms			ZeroOcc	AltConf
2	A	1	Total	C	O	0	0
			6	3	3		
2	A	1	Total	C	O	0	0
			6	3	3		
2	B	1	Total	C	O	0	0
			6	3	3		
2	B	1	Total	C	O	0	0
			6	3	3		
2	B	1	Total	C	O	0	0
			6	3	3		
2	B	1	Total	C	O	0	0
			6	3	3		
2	C	1	Total	C	O	0	0
			6	3	3		
2	C	1	Total	C	O	0	0
			6	3	3		
2	C	1	Total	C	O	0	0
			6	3	3		
2	C	1	Total	C	O	0	0
			6	3	3		
2	C	1	Total	C	O	0	0
			6	3	3		
2	C	1	Total	C	O	0	0
			6	3	3		
2	D	1	Total	C	O	0	0
			6	3	3		
2	D	1	Total	C	O	0	0
			6	3	3		
2	D	1	Total	C	O	0	0
			6	3	3		
2	D	1	Total	C	O	0	0
			6	3	3		

- Molecule 3 is PENTAETHYLENE GLYCOL (three-letter code: 1PE) (formula: C₁₀H₂₂O₆).



Mol	Chain	Residues	Atoms			ZeroOcc	AltConf
3	B	1	Total	C	O	0	0
			16	10	6		

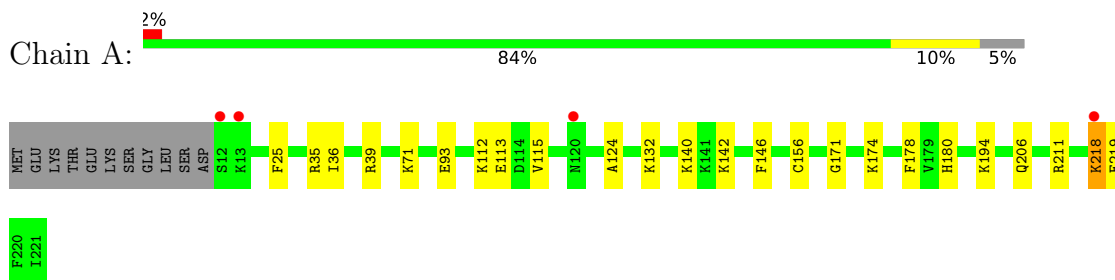
- Molecule 4 is water.

Mol	Chain	Residues	Atoms		ZeroOcc	AltConf
4	A	225	Total	O	0	0
			225	225		
4	B	194	Total	O	0	0
			194	194		
4	C	170	Total	O	0	0
			170	170		
4	D	160	Total	O	0	0
			160	160		

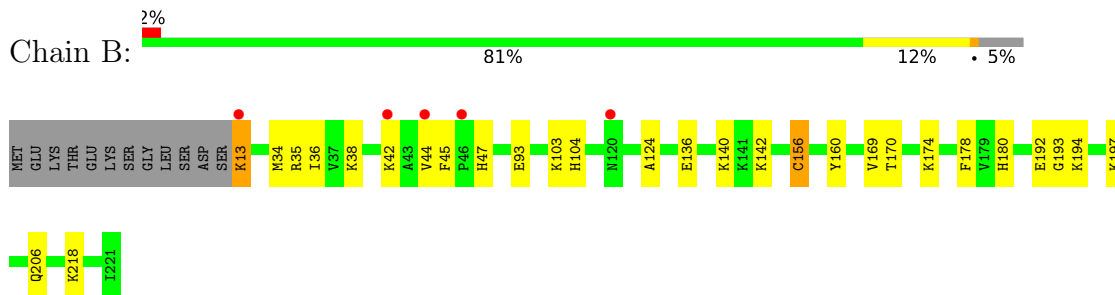
3 Residue-property plots [i](#)

These plots are drawn for all protein, RNA, DNA and oligosaccharide chains in the entry. The first graphic for a chain summarises the proportions of the various outlier classes displayed in the second graphic. The second graphic shows the sequence view annotated by issues in geometry and electron density. Residues are color-coded according to the number of geometric quality criteria for which they contain at least one outlier: green = 0, yellow = 1, orange = 2 and red = 3 or more. A red dot above a residue indicates a poor fit to the electron density ($RSRZ > 2$). Stretches of 2 or more consecutive residues without any outlier are shown as a green connector. Residues present in the sample, but not in the model, are shown in grey.

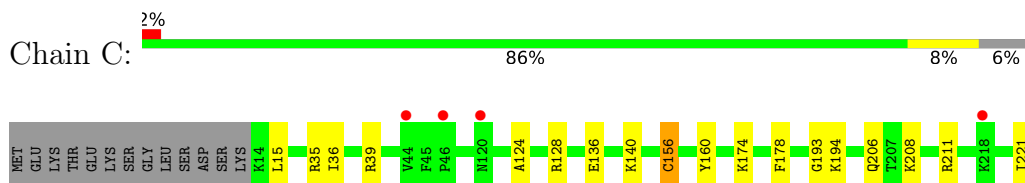
- Molecule 1: Pyroglutamyl-peptidase I



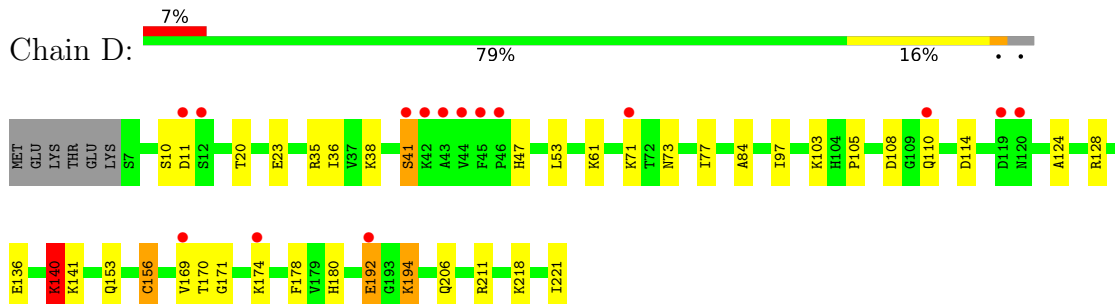
- Molecule 1: Pyroglutamyl-peptidase I



- Molecule 1: Pyroglutamyl-peptidase I



- Molecule 1: Pyroglutamyl-peptidase I



4 Data and refinement statistics

Property	Value	Source
Space group	P 1 21 1	Depositor
Cell constants a, b, c, α , β , γ	61.03Å 86.61Å 93.53Å 90.00° 105.18° 90.00°	Depositor
Resolution (Å)	28.29 – 1.85 28.29 – 1.84	Depositor EDS
% Data completeness (in resolution range)	97.3 (28.29-1.85) 97.3 (28.29-1.84)	Depositor EDS
R_{merge}	0.06	Depositor
R_{sym}	(Not available)	Depositor
$\langle I/\sigma(I) \rangle$ ¹	3.51 (at 1.84Å)	Xtriage
Refinement program	PHENIX 1.14_3260	Depositor
R, R_{free}	0.174 , 0.224 0.174 , 0.223	Depositor DCC
R_{free} test set	3956 reflections (5.03%)	wwPDB-VP
Wilson B-factor (Å ²)	18.6	Xtriage
Anisotropy	0.065	Xtriage
Bulk solvent k_{sol} (e/Å ³), B_{sol} (Å ²)	0.39 , 64.3	EDS
L-test for twinning ²	$\langle L \rangle = 0.51$, $\langle L^2 \rangle = 0.35$	Xtriage
Estimated twinning fraction	No twinning to report.	Xtriage
F_o, F_c correlation	0.96	EDS
Total number of atoms	7545	wwPDB-VP
Average B, all atoms (Å ²)	26.0	wwPDB-VP

Xtriage's analysis on translational NCS is as follows: *The largest off-origin peak in the Patterson function is 4.10% of the height of the origin peak. No significant pseudotranslation is detected.*

¹Intensities estimated from amplitudes.

²Theoretical values of $\langle |L| \rangle$, $\langle L^2 \rangle$ for acentric reflections are 0.5, 0.333 respectively for untwinned datasets, and 0.375, 0.2 for perfectly twinned datasets.

5 Model quality

5.1 Standard geometry

Bond lengths and bond angles in the following residue types are not validated in this section: GOL, OCS, 1PE

The Z score for a bond length (or angle) is the number of standard deviations the observed value is removed from the expected value. A bond length (or angle) with $|Z| > 5$ is considered an outlier worth inspection. RMSZ is the root-mean-square of all Z scores of the bond lengths (or angles).

Mol	Chain	Bond lengths		Bond angles	
		RMSZ	$\# Z > 5$	RMSZ	$\# Z > 5$
1	A	0.48	0/1692	0.63	1/2286 (0.0%)
1	B	0.47	0/1687	0.66	3/2279 (0.1%)
1	C	0.44	0/1669	0.58	0/2256
1	D	0.53	1/1725 (0.1%)	0.80	9/2330 (0.4%)
All	All	0.48	1/6773 (0.0%)	0.67	13/9151 (0.1%)

All (1) bond length outliers are listed below:

Mol	Chain	Res	Type	Atoms	Z	Observed(Å)	Ideal(Å)
1	D	194	LYS	CE-NZ	6.79	1.66	1.49

All (13) bond angle outliers are listed below:

Mol	Chain	Res	Type	Atoms	Z	Observed(°)	Ideal(°)
1	D	194	LYS	CD-CE-NZ	-7.87	93.60	111.70
1	D	71	LYS	CA-CB-CG	-7.86	96.10	113.40
1	D	71	LYS	CB-CG-CD	7.44	130.95	111.60
1	B	42	LYS	CD-CE-NZ	7.04	127.89	111.70
1	D	140	LYS	CD-CE-NZ	7.00	127.81	111.70
1	D	194	LYS	CB-CG-CD	6.89	129.52	111.60
1	D	71	LYS	CD-CE-NZ	-6.80	96.07	111.70
1	B	103	LYS	CA-CB-CG	6.20	127.04	113.40
1	D	194	LYS	CA-CB-CG	6.08	126.78	113.40
1	D	194	LYS	CG-CD-CE	5.87	129.52	111.90
1	D	192	GLU	CA-CB-CG	-5.79	100.66	113.40
1	A	71	LYS	CD-CE-NZ	-5.55	98.94	111.70
1	B	44	VAL	CG1-CB-CG2	5.06	119.00	110.90

There are no chirality outliers.

There are no planarity outliers.

5.2 Too-close contacts ⓘ

In the following table, the Non-H and H(model) columns list the number of non-hydrogen atoms and hydrogen atoms in the chain respectively. The H(added) column lists the number of hydrogen atoms added and optimized by MolProbity. The Clashes column lists the number of clashes within the asymmetric unit, whereas Symm-Clashes lists symmetry-related clashes.

Mol	Chain	Non-H	H(model)	H(added)	Clashes	Symm-Clashes
1	A	1666	0	1731	21	0
1	B	1661	0	1726	23	0
1	C	1646	0	1707	16	0
1	D	1699	0	1759	36	0
2	A	24	0	32	3	0
2	B	24	0	32	4	0
2	C	36	0	48	10	0
2	D	24	0	32	2	0
3	B	16	0	22	0	0
4	A	225	0	0	7	0
4	B	194	0	0	4	0
4	C	170	0	0	2	0
4	D	160	0	0	9	0
All	All	7545	0	7089	93	0

The all-atom clashscore is defined as the number of clashes found per 1000 atoms (including hydrogen atoms). The all-atom clashscore for this structure is 7.

All (93) close contacts within the same asymmetric unit are listed below, sorted by their clash magnitude.

Atom-1	Atom-2	Interatomic distance (Å)	Clash overlap (Å)
1:A:218:LYS:HD3	4:A:487:HOH:O	1.48	1.14
1:D:192:GLU:OE1	4:D:401:HOH:O	1.78	1.01
1:A:218:LYS:NZ	4:A:401:HOH:O	2.08	0.84
1:A:218:LYS:NZ	4:A:402:HOH:O	2.12	0.81
1:C:35:ARG:HH12	2:C:302:GOL:H11	1.47	0.80
1:C:39:ARG:HE	2:C:302:GOL:H31	1.47	0.79
1:B:194:LYS:H	2:B:304:GOL:H32	1.46	0.79
1:D:38:LYS:NZ	4:D:403:HOH:O	2.16	0.78
1:A:194:LYS:HG3	2:A:304:GOL:H2	1.65	0.78
1:B:218:LYS:NZ	4:B:401:HOH:O	2.17	0.77
1:D:171:GLY:O	1:D:174:LYS:HD2	1.86	0.76
1:C:194:LYS:HG3	2:C:303:GOL:H11	1.69	0.75
1:B:47:HIS:CD2	1:B:218:LYS:NZ	2.59	0.70
1:B:47:HIS:CD2	1:B:218:LYS:HZ1	2.11	0.69

Continued on next page...

Continued from previous page...

Atom-1	Atom-2	Interatomic distance (Å)	Clash overlap (Å)
1:C:193:GLY:HA3	2:C:303:GOL:H2	1.79	0.64
1:A:93:GLU:OE2	1:A:180:HIS:ND1	2.23	0.64
1:A:124:ALA:HB3	1:D:124:ALA:HB3	1.80	0.63
1:A:171:GLY:O	1:A:174:LYS:HD3	1.98	0.62
1:D:103:LYS:NZ	4:D:411:HOH:O	2.32	0.62
1:B:124:ALA:HB3	1:C:124:ALA:HB3	1.81	0.61
1:C:35:ARG:NH1	4:C:406:HOH:O	2.32	0.61
1:A:39:ARG:HH11	2:A:301:GOL:H11	1.67	0.59
1:A:112:LYS:HD2	1:A:115:VAL:HG21	1.85	0.59
1:A:140:LYS:NZ	4:A:408:HOH:O	2.37	0.57
1:D:169:VAL:HG23	1:D:170:THR:HG23	1.86	0.57
1:D:174:LYS:HD3	4:D:511:HOH:O	2.04	0.56
1:B:93:GLU:OE2	1:B:180:HIS:ND1	2.32	0.56
1:C:128:ARG:NH1	1:C:174:LYS:O	2.39	0.55
1:B:13:LYS:HE2	1:B:45:PHE:O	2.07	0.55
1:B:156:OCS:OD3	2:B:302:GOL:O1	2.21	0.54
1:D:103:LYS:HE2	1:D:103:LYS:H	1.72	0.54
1:A:178:PHE:HE1	1:A:180:HIS:CD2	2.26	0.54
1:B:104:HIS:NE2	2:D:301:GOL:H12	2.23	0.54
1:D:218:LYS:HD3	1:D:218:LYS:H	1.73	0.54
1:C:36:ILE:HD11	1:C:206:GLN:HB3	1.90	0.54
1:D:38:LYS:O	1:D:41:SER:HB2	2.08	0.54
1:B:142:LYS:NZ	4:B:404:HOH:O	2.40	0.53
1:C:208:LYS:HE3	2:C:306:GOL:H32	1.90	0.52
1:D:47:HIS:CD2	1:D:218:LYS:HD2	2.45	0.52
1:C:15:LEU:HD11	1:C:221:ILE:HD11	1.92	0.51
1:D:97:ILE:HD11	1:D:153:GLN:HG3	1.92	0.51
1:A:36:ILE:HD11	1:A:206:GLN:HB3	1.91	0.51
1:D:194:LYS:HG2	2:D:301:GOL:O3	2.11	0.50
1:D:35:ARG:HA	1:D:38:LYS:HE2	1.92	0.50
1:A:178:PHE:CE1	1:A:180:HIS:CD2	2.99	0.50
1:D:47:HIS:HD2	1:D:218:LYS:HD2	1.77	0.50
1:B:47:HIS:HD2	1:B:218:LYS:HZ2	1.59	0.49
1:A:132:LYS:HD2	1:D:114:ASP:OD1	2.13	0.49
1:A:211:ARG:NE	4:A:411:HOH:O	2.47	0.48
1:C:39:ARG:NE	2:C:302:GOL:H31	2.24	0.48
1:D:128:ARG:NH2	1:D:174:LYS:O	2.47	0.48
1:C:156:OCS:HB2	1:C:178:PHE:CZ	2.49	0.47
1:B:174:LYS:NZ	4:B:408:HOH:O	2.47	0.47
1:B:218:LYS:HZ3	1:B:218:LYS:H	1.61	0.47
1:D:10:SER:OG	1:D:11:ASP:N	2.47	0.46

Continued on next page...

Continued from previous page...

Atom-1	Atom-2	Interatomic distance (Å)	Clash overlap (Å)
1:B:192:GLU:H	1:B:192:GLU:CD	2.19	0.46
1:C:136:GLU:O	1:C:140:LYS:HG3	2.15	0.46
1:D:73:ASN:ND2	4:D:406:HOH:O	2.24	0.46
1:B:156:OCS:HB2	1:B:178:PHE:CZ	2.52	0.45
1:D:218:LYS:HD3	1:D:218:LYS:N	2.31	0.45
1:B:169:VAL:HG23	1:B:170:THR:HG23	1.97	0.45
1:D:192:GLU:O	1:D:192:GLU:HG3	2.17	0.45
1:A:146:PHE:CD1	1:B:197:LYS:HE3	2.52	0.44
1:A:140:LYS:HD3	1:A:140:LYS:HA	1.59	0.44
1:D:141:LYS:NZ	4:D:416:HOH:O	2.49	0.44
1:D:211:ARG:NH2	4:D:402:HOH:O	2.11	0.44
1:D:105:PRO:HA	1:D:110:GLN:O	2.18	0.44
1:A:218:LYS:HG2	1:A:219:GLU:N	2.33	0.43
1:B:34:MET:O	1:B:38:LYS:HG2	2.18	0.43
1:C:39:ARG:HH11	2:C:302:GOL:C1	2.31	0.43
1:D:77:ILE:HD11	1:D:221:ILE:HD13	2.00	0.43
1:D:114:ASP:OD1	4:D:405:HOH:O	2.21	0.43
1:D:140:LYS:HD2	1:D:140:LYS:HA	1.62	0.43
1:B:36:ILE:HD11	1:B:206:GLN:HB3	2.00	0.43
1:A:142:LYS:HD2	4:A:603:HOH:O	2.18	0.42
1:D:218:LYS:H	1:D:218:LYS:CD	2.31	0.42
1:C:194:LYS:CG	2:C:303:GOL:H11	2.44	0.42
1:D:192:GLU:H	1:D:192:GLU:HG2	0.95	0.42
1:A:113:GLU:HB3	4:A:536:HOH:O	2.20	0.42
1:B:35:ARG:NH1	4:B:412:HOH:O	2.51	0.42
1:D:84:ALA:HB2	1:D:180:HIS:CG	2.55	0.42
1:D:36:ILE:HD11	1:D:206:GLN:HB3	2.01	0.42
1:B:136:GLU:OE1	1:B:140:LYS:HG3	2.20	0.41
1:D:171:GLY:O	1:D:174:LYS:NZ	2.39	0.41
1:A:25:PHE:HE2	2:A:303:GOL:H12	1.85	0.41
1:B:193:GLY:CA	2:B:304:GOL:H11	2.51	0.41
1:C:211:ARG:HH22	2:C:306:GOL:H2	1.85	0.41
1:D:156:OCS:HB2	1:D:178:PHE:CZ	2.55	0.41
1:D:20:THR:HA	1:D:53:LEU:O	2.20	0.41
1:D:23:GLU:OE2	4:D:404:HOH:O	2.21	0.41
2:C:304:GOL:O2	4:C:401:HOH:O	2.22	0.41
1:D:61:LYS:NZ	1:D:108:ASP:OD2	2.50	0.40
1:B:194:LYS:N	2:B:304:GOL:H32	2.25	0.40

There are no symmetry-related clashes.

5.3 Torsion angles

5.3.1 Protein backbone

In the following table, the Percentiles column shows the percent Ramachandran outliers of the chain as a percentile score with respect to all X-ray entries followed by that with respect to entries of similar resolution.

The Analysed column shows the number of residues for which the backbone conformation was analysed, and the total number of residues.

Mol	Chain	Analysed	Favoured	Allowed	Outliers	Percentiles	
1	A	208/221 (94%)	202 (97%)	6 (3%)	0	100	100
1	B	207/221 (94%)	202 (98%)	5 (2%)	0	100	100
1	C	205/221 (93%)	201 (98%)	4 (2%)	0	100	100
1	D	213/221 (96%)	205 (96%)	7 (3%)	1 (0%)	29	15
All	All	833/884 (94%)	810 (97%)	22 (3%)	1 (0%)	51	36

All (1) Ramachandran outliers are listed below:

Mol	Chain	Res	Type
1	D	41	SER

5.3.2 Protein sidechains

In the following table, the Percentiles column shows the percent sidechain outliers of the chain as a percentile score with respect to all X-ray entries followed by that with respect to entries of similar resolution.

The Analysed column shows the number of residues for which the sidechain conformation was analysed, and the total number of residues.

Mol	Chain	Analysed	Rotameric	Outliers	Percentiles	
1	A	185/194 (95%)	183 (99%)	2 (1%)	73	65
1	B	184/194 (95%)	182 (99%)	2 (1%)	73	65
1	C	182/194 (94%)	181 (100%)	1 (0%)	88	86
1	D	189/194 (97%)	187 (99%)	2 (1%)	73	65
All	All	740/776 (95%)	733 (99%)	7 (1%)	78	72

All (7) residues with a non-rotameric sidechain are listed below:

Mol	Chain	Res	Type
1	A	35	ARG
1	A	218	LYS
1	B	13	LYS
1	B	160	TYR
1	C	160	TYR
1	D	136	GLU
1	D	140	LYS

Sometimes sidechains can be flipped to improve hydrogen bonding and reduce clashes. All (1) such sidechains are listed below:

Mol	Chain	Res	Type
1	B	47	HIS

5.3.3 RNA ⓘ

There are no RNA molecules in this entry.

5.4 Non-standard residues in protein, DNA, RNA chains ⓘ

4 non-standard protein/DNA/RNA residues are modelled in this entry.

In the following table, the Counts columns list the number of bonds (or angles) for which Mogul statistics could be retrieved, the number of bonds (or angles) that are observed in the model and the number of bonds (or angles) that are defined in the Chemical Component Dictionary. The Link column lists molecule types, if any, to which the group is linked. The Z score for a bond length (or angle) is the number of standard deviations the observed value is removed from the expected value. A bond length (or angle) with $|Z| > 2$ is considered an outlier worth inspection. RMSZ is the root-mean-square of all Z scores of the bond lengths (or angles).

Mol	Type	Chain	Res	Link	Bond lengths			Bond angles		
					Counts	RMSZ	$\# Z > 2$	Counts	RMSZ	$\# Z > 2$
1	OCS	C	156	1	7,8,9	1.19	1 (14%)	6,11,13	1.65	2 (33%)
1	OCS	D	156	1	7,8,9	1.14	0	6,11,13	1.89	2 (33%)
1	OCS	A	156	1	7,8,9	1.07	1 (14%)	6,11,13	1.94	2 (33%)
1	OCS	B	156	1	7,8,9	1.06	1 (14%)	6,11,13	1.85	2 (33%)

In the following table, the Chirals column lists the number of chiral outliers, the number of chiral centers analysed, the number of these observed in the model and the number defined in the Chemical Component Dictionary. Similar counts are reported in the Torsion and Rings columns. '-' means no outliers of that kind were identified.

Mol	Type	Chain	Res	Link	Chirals	Torsions	Rings
1	OCS	C	156	1	-	0/4/7/9	-
1	OCS	D	156	1	-	0/4/7/9	-
1	OCS	A	156	1	-	0/4/7/9	-
1	OCS	B	156	1	-	0/4/7/9	-

All (3) bond length outliers are listed below:

Mol	Chain	Res	Type	Atoms	Z	Observed(Å)	Ideal(Å)
1	C	156	OCS	OD2-SG	-2.55	1.38	1.47
1	A	156	OCS	OD1-SG	-2.16	1.38	1.45
1	B	156	OCS	OD1-SG	-2.05	1.39	1.45

All (8) bond angle outliers are listed below:

Mol	Chain	Res	Type	Atoms	Z	Observed(°)	Ideal(°)
1	D	156	OCS	OD3-SG-CB	3.44	111.03	106.94
1	B	156	OCS	OD2-SG-CB	3.31	111.02	105.74
1	A	156	OCS	OD1-SG-CB	3.06	110.57	106.94
1	C	156	OCS	OD2-SG-CB	3.01	110.54	105.74
1	A	156	OCS	OD3-SG-CB	3.00	110.51	106.94
1	B	156	OCS	OD1-SG-CB	2.36	109.75	106.94
1	C	156	OCS	OD1-SG-CB	2.29	109.66	106.94
1	D	156	OCS	OD2-SG-CB	2.19	109.22	105.74

There are no chirality outliers.

There are no torsion outliers.

There are no ring outliers.

3 monomers are involved in 4 short contacts:

Mol	Chain	Res	Type	Clashes	Symm-Clashes
1	C	156	OCS	1	0
1	D	156	OCS	1	0
1	B	156	OCS	2	0

5.5 Carbohydrates

There are no monosaccharides in this entry.

5.6 Ligand geometry

19 ligands are modelled in this entry.

In the following table, the Counts columns list the number of bonds (or angles) for which Mogul statistics could be retrieved, the number of bonds (or angles) that are observed in the model and the number of bonds (or angles) that are defined in the Chemical Component Dictionary. The Link column lists molecule types, if any, to which the group is linked. The Z score for a bond length (or angle) is the number of standard deviations the observed value is removed from the expected value. A bond length (or angle) with $|Z| > 2$ is considered an outlier worth inspection. RMSZ is the root-mean-square of all Z scores of the bond lengths (or angles).

Mol	Type	Chain	Res	Link	Bond lengths			Bond angles		
					Counts	RMSZ	# $ Z > 2$	Counts	RMSZ	# $ Z > 2$
3	1PE	B	305	-	15,15,15	0.54	0	14,14,14	0.20	0
2	GOL	C	304	-	5,5,5	0.77	0	5,5,5	1.01	0
2	GOL	B	302	-	5,5,5	0.95	0	5,5,5	0.88	0
2	GOL	A	304	-	5,5,5	0.78	0	5,5,5	1.07	0
2	GOL	D	302	-	5,5,5	0.88	0	5,5,5	1.01	0
2	GOL	B	301	-	5,5,5	0.91	0	5,5,5	1.05	0
2	GOL	C	301	-	5,5,5	0.96	0	5,5,5	0.93	0
2	GOL	A	301	-	5,5,5	0.74	0	5,5,5	1.13	1 (20%)
2	GOL	D	301	-	5,5,5	0.91	0	5,5,5	1.35	1 (20%)
2	GOL	C	305	-	5,5,5	1.01	0	5,5,5	0.91	0
2	GOL	A	302	-	5,5,5	0.92	0	5,5,5	0.94	0
2	GOL	C	302	-	5,5,5	0.82	0	5,5,5	0.99	0
2	GOL	D	304	-	5,5,5	0.88	0	5,5,5	1.03	0
2	GOL	C	306	-	5,5,5	0.91	0	5,5,5	0.91	0
2	GOL	B	304	-	5,5,5	0.91	0	5,5,5	0.91	0
2	GOL	B	303	-	5,5,5	0.93	0	5,5,5	1.03	0
2	GOL	A	303	-	5,5,5	0.92	0	5,5,5	0.87	0
2	GOL	D	303	-	5,5,5	0.96	0	5,5,5	0.97	0
2	GOL	C	303	-	5,5,5	0.94	0	5,5,5	0.95	0

In the following table, the Chirals column lists the number of chiral outliers, the number of chiral centers analysed, the number of these observed in the model and the number defined in the Chemical Component Dictionary. Similar counts are reported in the Torsion and Rings columns. '-' means no outliers of that kind were identified.

Mol	Type	Chain	Res	Link	Chirals	Torsions	Rings
3	1PE	B	305	-	-	4/13/13/13	-
2	GOL	C	304	-	-	2/4/4/4	-
2	GOL	B	302	-	-	2/4/4/4	-
2	GOL	A	304	-	-	0/4/4/4	-

Continued on next page...

Continued from previous page...

Mol	Type	Chain	Res	Link	Chirals	Torsions	Rings
2	GOL	D	302	-	-	0/4/4/4	-
2	GOL	B	301	-	-	0/4/4/4	-
2	GOL	C	301	-	-	2/4/4/4	-
2	GOL	A	301	-	-	2/4/4/4	-
2	GOL	D	301	-	-	2/4/4/4	-
2	GOL	C	305	-	-	0/4/4/4	-
2	GOL	A	302	-	-	0/4/4/4	-
2	GOL	C	302	-	-	2/4/4/4	-
2	GOL	D	304	-	-	2/4/4/4	-
2	GOL	C	306	-	-	0/4/4/4	-
2	GOL	B	304	-	-	2/4/4/4	-
2	GOL	B	303	-	-	1/4/4/4	-
2	GOL	A	303	-	-	3/4/4/4	-
2	GOL	D	303	-	-	0/4/4/4	-
2	GOL	C	303	-	-	0/4/4/4	-

There are no bond length outliers.

All (2) bond angle outliers are listed below:

Mol	Chain	Res	Type	Atoms	Z	Observed(°)	Ideal(°)
2	D	301	GOL	C3-C2-C1	-2.72	101.14	111.70
2	A	301	GOL	C3-C2-C1	-2.08	103.61	111.70

There are no chirality outliers.

All (24) torsion outliers are listed below:

Mol	Chain	Res	Type	Atoms
2	C	304	GOL	O1-C1-C2-C3
2	B	302	GOL	O1-C1-C2-C3
2	C	301	GOL	O1-C1-C2-C3
2	D	301	GOL	O1-C1-C2-C3
2	D	304	GOL	C1-C2-C3-O3
2	B	304	GOL	O1-C1-C2-C3
2	A	301	GOL	O1-C1-C2-C3
2	C	302	GOL	O1-C1-C2-C3
3	B	305	1PE	OH7-C16-C26-OH6
2	B	302	GOL	O1-C1-C2-O2
2	C	301	GOL	O1-C1-C2-O2
2	D	301	GOL	O1-C1-C2-O2

Continued on next page...

Continued from previous page...

Mol	Chain	Res	Type	Atoms
2	D	304	GOL	O2-C2-C3-O3
2	B	304	GOL	O1-C1-C2-O2
2	C	304	GOL	O1-C1-C2-O2
3	B	305	1PE	OH6-C15-C25-OH5
3	B	305	1PE	OH4-C13-C23-OH3
2	A	303	GOL	O1-C1-C2-O2
2	B	303	GOL	C1-C2-C3-O3
2	C	302	GOL	O1-C1-C2-O2
2	A	301	GOL	O1-C1-C2-O2
3	B	305	1PE	C25-C15-OH6-C26
2	A	303	GOL	O1-C1-C2-C3
2	A	303	GOL	O2-C2-C3-O3

There are no ring outliers.

10 monomers are involved in 19 short contacts:

Mol	Chain	Res	Type	Clashes	Symm-Clashes
2	C	304	GOL	1	0
2	B	302	GOL	1	0
2	A	304	GOL	1	0
2	A	301	GOL	1	0
2	D	301	GOL	2	0
2	C	302	GOL	4	0
2	C	306	GOL	2	0
2	B	304	GOL	3	0
2	A	303	GOL	1	0
2	C	303	GOL	3	0

5.7 Other polymers [i](#)

There are no such residues in this entry.

5.8 Polymer linkage issues [i](#)

There are no chain breaks in this entry.

6 Fit of model and data

6.1 Protein, DNA and RNA chains

In the following table, the column labelled ‘#RSRZ > 2’ contains the number (and percentage) of RSRZ outliers, followed by percent RSRZ outliers for the chain as percentile scores relative to all X-ray entries and entries of similar resolution. The OWAB column contains the minimum, median, 95th percentile and maximum values of the occupancy-weighted average B-factor per residue. The column labelled ‘Q < 0.9’ lists the number of (and percentage) of residues with an average occupancy less than 0.9.

Mol	Chain	Analysed	<RSRZ>	#RSRZ>2	OWAB(Å ²)	Q<0.9
1	A	209/221 (94%)	-0.41	4 (1%) 66 66	7, 17, 37, 65	0
1	B	208/221 (94%)	-0.16	5 (2%) 59 57	8, 20, 46, 65	0
1	C	207/221 (93%)	-0.27	4 (1%) 66 66	9, 21, 43, 51	0
1	D	214/221 (96%)	0.21	15 (7%) 16 15	12, 27, 57, 71	0
All	All	838/884 (94%)	-0.15	28 (3%) 46 44	7, 21, 47, 71	0

All (28) RSRZ outliers are listed below:

Mol	Chain	Res	Type	RSRZ
1	D	44	VAL	5.3
1	D	43	ALA	5.1
1	B	13	LYS	5.0
1	D	11	ASP	4.5
1	B	46	PRO	4.0
1	D	42	LYS	4.0
1	A	12	SER	3.8
1	B	44	VAL	3.7
1	D	120	ASN	3.6
1	B	42	LYS	3.4
1	D	46	PRO	3.4
1	A	13	LYS	3.0
1	D	119	ASP	3.0
1	D	192	GLU	2.9
1	B	120	ASN	2.8
1	D	12	SER	2.8
1	C	120	ASN	2.6
1	D	169	VAL	2.6
1	C	44	VAL	2.5
1	D	71	LYS	2.5
1	A	120	ASN	2.4

Continued on next page...

Continued from previous page...

Mol	Chain	Res	Type	RSRZ
1	D	41	SER	2.3
1	D	45	PHE	2.3
1	D	174	LYS	2.3
1	C	46	PRO	2.3
1	A	218	LYS	2.1
1	D	110	GLN	2.0
1	C	218	LYS	2.0

6.2 Non-standard residues in protein, DNA, RNA chains [i](#)

In the following table, the Atoms column lists the number of modelled atoms in the group and the number defined in the chemical component dictionary. The B-factors column lists the minimum, median, 95th percentile and maximum values of B factors of atoms in the group. The column labelled 'Q< 0.9' lists the number of atoms with occupancy less than 0.9.

Mol	Type	Chain	Res	Atoms	RSCC	RSR	B-factors(Å ²)	Q<0.9
1	OCS	D	156	9/10	0.94	0.12	13,18,49,52	0
1	OCS	A	156	9/10	0.94	0.11	7,11,34,38	0
1	OCS	B	156	9/10	0.94	0.13	9,14,40,43	0
1	OCS	C	156	9/10	0.95	0.12	10,11,35,37	0

6.3 Carbohydrates [i](#)

There are no monosaccharides in this entry.

6.4 Ligands [i](#)

In the following table, the Atoms column lists the number of modelled atoms in the group and the number defined in the chemical component dictionary. The B-factors column lists the minimum, median, 95th percentile and maximum values of B factors of atoms in the group. The column labelled 'Q< 0.9' lists the number of atoms with occupancy less than 0.9.

Mol	Type	Chain	Res	Atoms	RSCC	RSR	B-factors(Å ²)	Q<0.9
2	GOL	A	302	6/6	0.59	0.42	77,79,82,88	0
2	GOL	C	305	6/6	0.66	0.19	43,51,57,58	0
2	GOL	A	303	6/6	0.72	0.20	48,52,57,59	0
2	GOL	C	303	6/6	0.74	0.22	47,51,54,56	0
2	GOL	D	301	6/6	0.75	0.23	50,52,58,64	0
2	GOL	D	302	6/6	0.76	0.33	45,60,63,69	0
2	GOL	C	301	6/6	0.77	0.24	46,47,58,61	0

Continued on next page...

Continued from previous page...

Mol	Type	Chain	Res	Atoms	RSCC	RSR	B-factors(\AA^2)	Q<0.9
2	GOL	B	301	6/6	0.79	0.32	38,54,64,73	0
2	GOL	B	304	6/6	0.81	0.19	47,52,60,63	0
2	GOL	D	304	6/6	0.83	0.21	43,52,54,70	0
2	GOL	B	303	6/6	0.83	0.31	45,58,62,64	0
2	GOL	B	302	6/6	0.84	0.17	37,48,52,55	0
2	GOL	D	303	6/6	0.86	0.21	48,56,61,66	0
2	GOL	A	304	6/6	0.87	0.16	43,46,51,59	0
2	GOL	C	304	6/6	0.87	0.14	47,48,55,55	0
2	GOL	A	301	6/6	0.87	0.13	32,44,51,76	0
3	1PE	B	305	16/16	0.89	0.17	33,46,57,58	0
2	GOL	C	302	6/6	0.90	0.15	37,45,55,60	0
2	GOL	C	306	6/6	0.93	0.22	42,47,67,68	0

6.5 Other polymers [i](#)

There are no such residues in this entry.