



Full wwPDB X-ray Structure Validation Report ⓘ

Feb 14, 2022 – 02:15 PM EST

PDB ID : 7LTP
Title : The internal aldimine form of the wild-type Salmonella typhimurium Tryptophan Synthase in complex with inhibitor N-(4'-trifluoromethoxybenzenesulfonyl)-2-amino-1-ethylphosphate (F9F) at the enzyme alpha-site, cesium ion at the metal coordination site and the product L-tryptophan at the enzyme beta-site at 1.47 Angstrom resolution
Authors : Hilario, E.; Dunn, M.F.; Mueller, L.J.
Deposited on : 2021-02-19
Resolution : 1.47 Å(reported)

This is a Full wwPDB X-ray Structure Validation Report for a publicly released PDB entry.

We welcome your comments at validation@mail.wwpdb.org

A user guide is available at

<https://www.wwpdb.org/validation/2017/XrayValidationReportHelp>

with specific help available everywhere you see the ⓘ symbol.

The following versions of software and data (see [references ⓘ](#)) were used in the production of this report:

MolProbity : 4.02b-467
Mogul : 1.8.5 (274361), CSD as541be (2020)
Xtriage (Phenix) : 1.13
EDS : 2.26
buster-report : 1.1.7 (2018)
Percentile statistics : 20191225.v01 (using entries in the PDB archive December 25th 2019)
Refmac : 5.8.0158
CCP4 : 7.0.044 (Gargrove)
Ideal geometry (proteins) : Engh & Huber (2001)
Ideal geometry (DNA, RNA) : Parkinson et al. (1996)
Validation Pipeline (wwPDB-VP) : 2.26

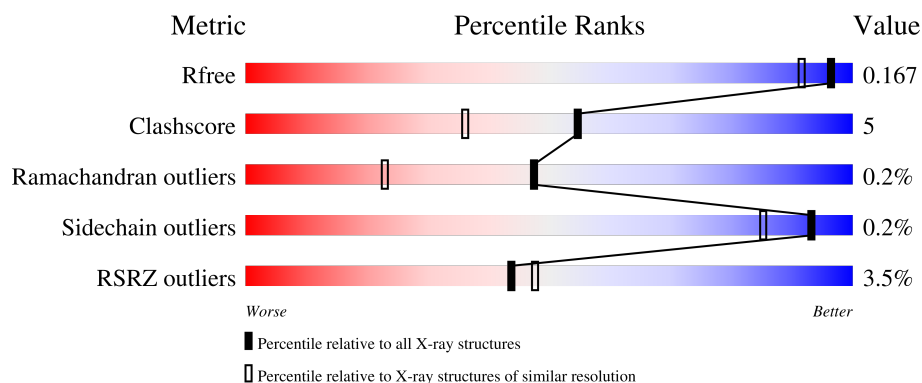
1 Overall quality at a glance

The following experimental techniques were used to determine the structure:

X-RAY DIFFRACTION

The reported resolution of this entry is 1.47 Å.

Percentile scores (ranging between 0-100) for global validation metrics of the entry are shown in the following graphic. The table shows the number of entries on which the scores are based.



Metric	Whole archive (#Entries)	Similar resolution (#Entries, resolution range(Å))
R_{free}	130704	4690 (1.50-1.46)
Clashscore	141614	4955 (1.50-1.46)
Ramachandran outliers	138981	4846 (1.50-1.46)
Sidechain outliers	138945	4844 (1.50-1.46)
RSRZ outliers	127900	4614 (1.50-1.46)

The table below summarises the geometric issues observed across the polymeric chains and their fit to the electron density. The red, orange, yellow and green segments of the lower bar indicate the fraction of residues that contain outliers for ≥ 3 , 2, 1 and 0 types of geometric quality criteria respectively. A grey segment represents the fraction of residues that are not modelled. The numeric value for each fraction is indicated below the corresponding segment, with a dot representing fractions $\leq 5\%$. The upper red bar (where present) indicates the fraction of residues that have poor fit to the electron density. The numeric value is given above the bar.

Mol	Chain	Length	Quality of chain
1	A	268	<div> <div>5%</div> <div> <div></div> <div>91%</div> <div>9%</div> </div> </div>
2	B	397	<div> <div>2%</div> <div> <div></div> <div>91%</div> <div>7%</div> </div> </div>

The following table lists non-polymeric compounds, carbohydrate monomers and non-standard residues in protein, DNA, RNA chains that are outliers for geometric or electron-density-fit criteria:

Mol	Type	Chain	Res	Chirality	Geometry	Clashes	Electron density
8	EDO	B	408	-	-	X	-

2 Entry composition [i](#)

There are 12 unique types of molecules in this entry. The entry contains 5921 atoms, of which 0 are hydrogens and 0 are deuteriums.

In the tables below, the ZeroOcc column contains the number of atoms modelled with zero occupancy, the AltConf column contains the number of residues with at least one atom in alternate conformation and the Trace column contains the number of residues modelled with at most 2 atoms.

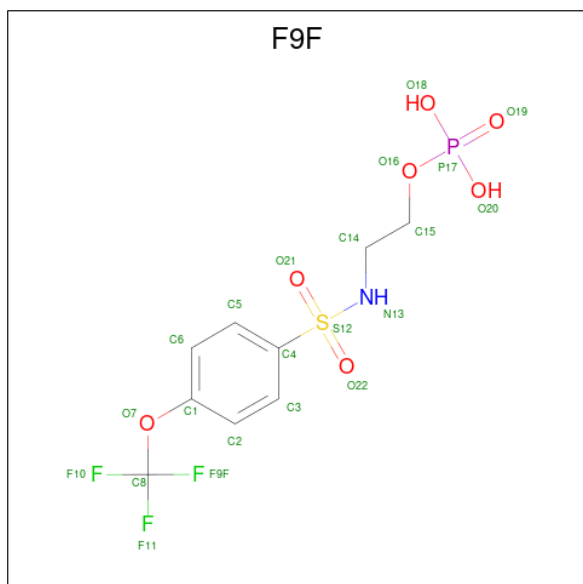
- Molecule 1 is a protein called Tryptophan synthase alpha chain.

Mol	Chain	Residues	Atoms					ZeroOcc	AltConf	Trace
1	A	268	Total	C	N	O	S	0	7	0
			2034	1284	354	388	8			

- Molecule 2 is a protein called Tryptophan synthase beta chain.

Mol	Chain	Residues	Atoms					ZeroOcc	AltConf	Trace
2	B	393	Total	C	N	O	S	0	17	0
			3087	1937	543	586	21			

- Molecule 3 is 2-([4-(TRIFLUOROMETHOXY)PHENYL]SULFONYL)AMINO)ETHYL DIHYDROGEN PHOSPHATE (three-letter code: F9F) (formula: C₉H₁₁F₃NO₇PS) (labeled as "Ligand of Interest" by depositor).

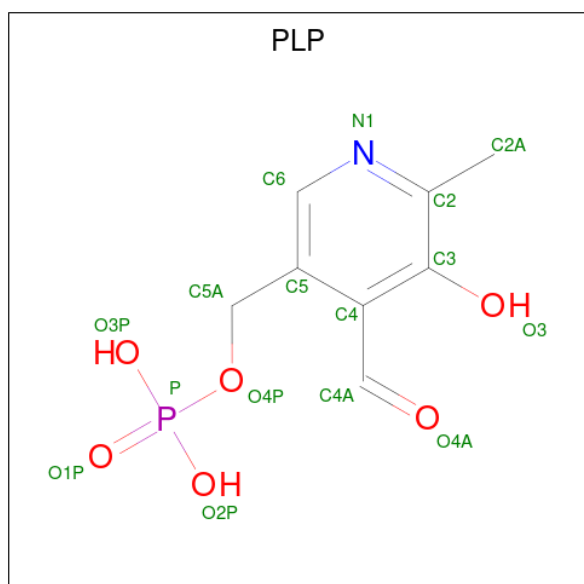


Mol	Chain	Residues	Atoms							ZeroOcc	AltConf
3	A	1	Total	C	F	N	O	P	S	0	0
			22	9	3	1	7	1	1		

- Molecule 4 is CESIUM ION (three-letter code: CS) (formula: Cs) (labeled as "Ligand of Interest" by depositor).

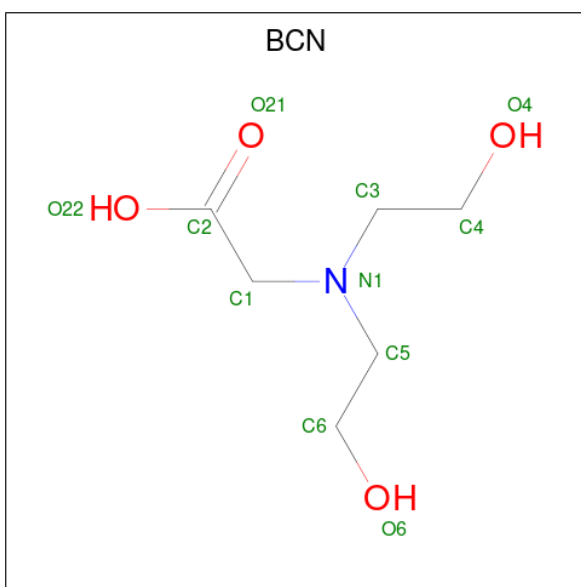
Mol	Chain	Residues	Atoms	ZeroOcc	AltConf
4	A	1	Total Cs 1 1	0	0
4	B	3	Total Cs 4 4	0	1

- Molecule 5 is PYRIDOXAL-5'-PHOSPHATE (three-letter code: PLP) (formula: C₈H₁₀NO₆P) (labeled as "Ligand of Interest" by depositor).



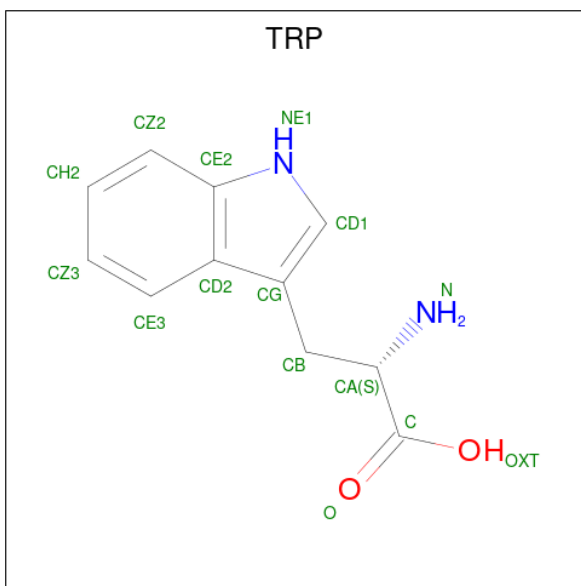
Mol	Chain	Residues	Atoms	ZeroOcc	AltConf
5	B	1	Total C N O P 15 8 1 5 1	0	0

- Molecule 6 is BICINE (three-letter code: BCN) (formula: C₆H₁₃NO₄).



Mol	Chain	Residues	Atoms				ZeroOcc	AltConf
6	B	1	Total	C	N	O	0	0
			11	6	1	4		

- Molecule 7 is TRYPTOPHAN (three-letter code: TRP) (formula: $C_{11}H_{12}N_2O_2$) (labeled as "Ligand of Interest" by depositor).



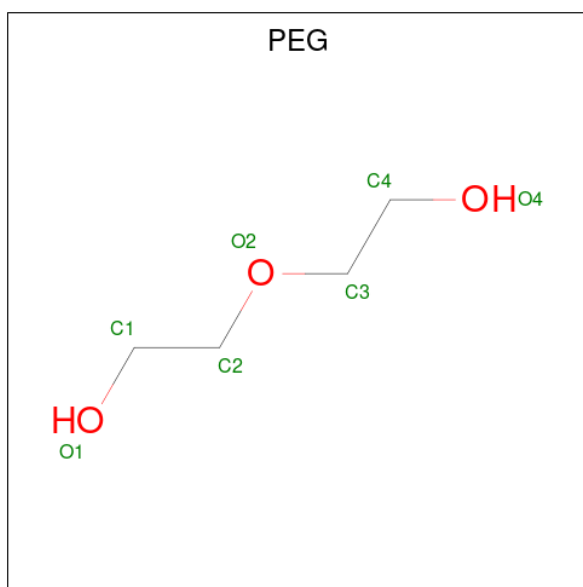
Mol	Chain	Residues	Atoms				ZeroOcc	AltConf
7	B	1	Total	C	N	O	0	0
			15	11	2	2		

- Molecule 8 is 1,2-ETHANEDIOL (three-letter code: EDO) (formula: $C_2H_6O_2$).



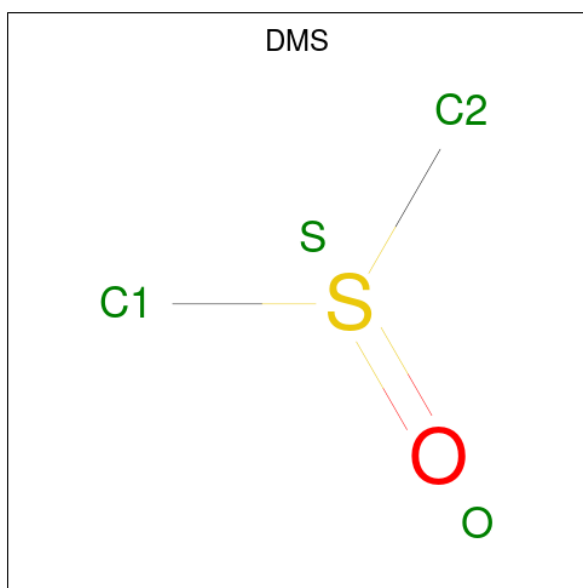
Mol	Chain	Residues	Atoms			ZeroOcc	AltConf
8	B	1	Total	C	O	0	0
			4	2	2		
8	B	1	Total	C	O	0	0
			4	2	2		
8	B	1	Total	C	O	0	0
			4	2	2		

- Molecule 9 is DI(HYDROXYETHYL)ETHER (three-letter code: PEG) (formula: $C_4H_{10}O_3$).



Mol	Chain	Residues	Atoms			ZeroOcc	AltConf
9	B	1	Total	C	O	0	0
			7	4	3		

- Molecule 10 is DIMETHYL SULFOXIDE (three-letter code: DMS) (formula: C_2H_6OS).



Mol	Chain	Residues	Atoms				ZeroOcc	AltConf
10	B	1	Total	C	O	S	0	0
			4	2	1	1		

- Molecule 11 is CHLORIDE ION (three-letter code: CL) (formula: Cl).

Mol	Chain	Residues	Atoms		ZeroOcc	AltConf
11	B	2	Total	Cl	0	0
			2	2		

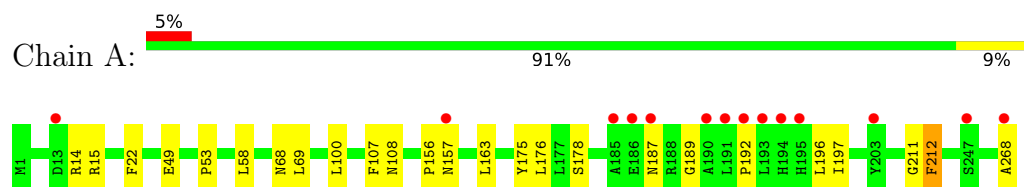
- Molecule 12 is water.

Mol	Chain	Residues	Atoms		ZeroOcc	AltConf
12	A	259	Total	O	0	3
			262	262		
12	B	433	Total	O	0	12
			445	445		

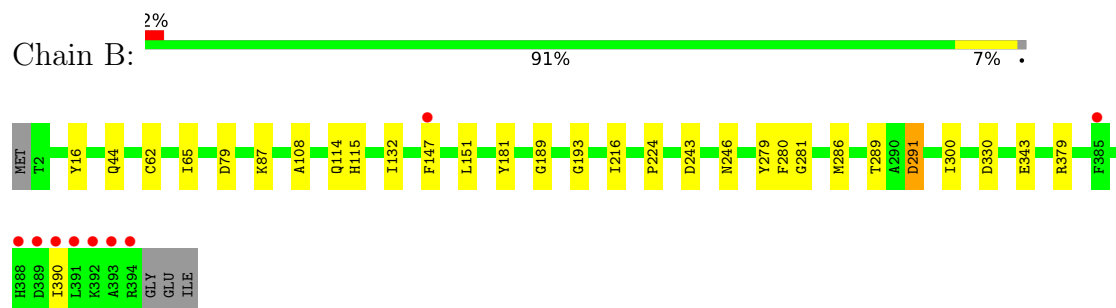
3 Residue-property plots [i](#)

These plots are drawn for all protein, RNA, DNA and oligosaccharide chains in the entry. The first graphic for a chain summarises the proportions of the various outlier classes displayed in the second graphic. The second graphic shows the sequence view annotated by issues in geometry and electron density. Residues are color-coded according to the number of geometric quality criteria for which they contain at least one outlier: green = 0, yellow = 1, orange = 2 and red = 3 or more. A red dot above a residue indicates a poor fit to the electron density ($RSRZ > 2$). Stretches of 2 or more consecutive residues without any outlier are shown as a green connector. Residues present in the sample, but not in the model, are shown in grey.

- Molecule 1: Tryptophan synthase alpha chain



- Molecule 2: Tryptophan synthase beta chain



4 Data and refinement statistics

Property	Value	Source
Space group	C 1 2 1	Depositor
Cell constants a, b, c, α , β , γ	182.41 Å 59.22 Å 67.19 Å 90.00° 94.84° 90.00°	Depositor
Resolution (Å)	39.16 – 1.47 39.16 – 1.47	Depositor EDS
% Data completeness (in resolution range)	86.1 (39.16-1.47) 86.1 (39.16-1.47)	Depositor EDS
R_{merge}	0.03	Depositor
R_{sym}	0.03	Depositor
$\langle I/\sigma(I) \rangle$ ¹	2.41 (at 1.47 Å)	Xtriage
Refinement program	REFMAC 5.8.0258	Depositor
R, R_{free}	0.133 , 0.167 0.133 , 0.167	Depositor DCC
R_{free} test set	5132 reflections (4.91%)	wwPDB-VP
Wilson B-factor (Å ²)	12.4	Xtriage
Anisotropy	0.457	Xtriage
Bulk solvent k_{sol} (e/Å ³), B_{sol} (Å ²)	0.33 , 51.4	EDS
L-test for twinning ²	$\langle L \rangle = 0.50$, $\langle L^2 \rangle = 0.34$	Xtriage
Estimated twinning fraction	No twinning to report.	Xtriage
F_o, F_c correlation	0.97	EDS
Total number of atoms	5921	wwPDB-VP
Average B, all atoms (Å ²)	19.0	wwPDB-VP

Xtriage's analysis on translational NCS is as follows: *The largest off-origin peak in the Patterson function is 6.12% of the height of the origin peak. No significant pseudotranslation is detected.*

¹Intensities estimated from amplitudes.

²Theoretical values of $\langle |L| \rangle$, $\langle L^2 \rangle$ for acentric reflections are 0.5, 0.333 respectively for untwinned datasets, and 0.375, 0.2 for perfectly twinned datasets.

5 Model quality [i](#)

5.1 Standard geometry [i](#)

Bond lengths and bond angles in the following residue types are not validated in this section: BCN, PLP, CL, DMS, CS, F9F, EDO, PEG

The Z score for a bond length (or angle) is the number of standard deviations the observed value is removed from the expected value. A bond length (or angle) with $|Z| > 5$ is considered an outlier worth inspection. RMSZ is the root-mean-square of all Z scores of the bond lengths (or angles).

Mol	Chain	Bond lengths		Bond angles	
		RMSZ	$\# Z > 5$	RMSZ	$\# Z > 5$
1	A	0.29	0/2073	0.58	0/2821
2	B	0.31	0/3146	0.61	1/4250 (0.0%)
All	All	0.30	0/5219	0.60	1/7071 (0.0%)

Chiral center outliers are detected by calculating the chiral volume of a chiral center and verifying if the center is modelled as a planar moiety or with the opposite hand. A planarity outlier is detected by checking planarity of atoms in a peptide group, atoms in a mainchain group or atoms of a sidechain that are expected to be planar.

Mol	Chain	#Chirality outliers	#Planarity outliers
1	A	0	1

There are no bond length outliers.

All (1) bond angle outliers are listed below:

Mol	Chain	Res	Type	Atoms	Z	Observed($^{\circ}$)	Ideal($^{\circ}$)
2	B	291	ASP	CB-CA-C	-5.01	100.37	110.40

There are no chirality outliers.

All (1) planarity outliers are listed below:

Mol	Chain	Res	Type	Group
1	A	107	PHE	Peptide

5.2 Too-close contacts [i](#)

In the following table, the Non-H and H(model) columns list the number of non-hydrogen atoms and hydrogen atoms in the chain respectively. The H(added) column lists the number of hydrogen atoms added and optimized by MolProbity. The Clashes column lists the number of clashes within

the asymmetric unit, whereas Symm-Clashes lists symmetry-related clashes.

Mol	Chain	Non-H	H(model)	H(added)	Clashes	Symm-Clashes
1	A	2034	0	1986	24	0
2	B	3087	0	3020	29	0
3	A	22	0	9	2	0
4	A	1	0	0	0	0
4	B	4	0	0	0	0
5	B	15	0	6	0	0
6	B	11	0	12	0	0
7	B	15	0	9	1	0
8	B	12	0	18	9	0
9	B	7	0	10	0	0
10	B	4	0	6	2	0
11	B	2	0	0	0	0
12	A	262	0	0	4	0
12	B	445	0	0	9	0
All	All	5921	0	5076	54	0

The all-atom clashscore is defined as the number of clashes found per 1000 atoms (including hydrogen atoms). The all-atom clashscore for this structure is 5.

All (54) close contacts within the same asymmetric unit are listed below, sorted by their clash magnitude.

Atom-1	Atom-2	Interatomic distance (Å)	Clash overlap (Å)
1:A:108[A]:ASN:HB2	12:B:681:HOH:O	1.16	1.29
1:A:108[A]:ASN:CB	12:B:681:HOH:O	1.66	1.28
2:B:330:ASP:H	10:B:409:DMS:H23	1.45	0.80
2:B:330:ASP:HB2	10:B:409:DMS:H13	1.70	0.74
1:A:15:ARG:O	1:A:268:ALA:HB2	1.96	0.65
1:A:58:LEU:HD23	12:B:584:HOH:O	1.96	0.64
2:B:246:ASN:HB2	8:B:408:EDO:H21	1.79	0.64
2:B:291:ASP:HB2	8:B:407:EDO:H11	1.78	0.64
2:B:243:ASP:O	8:B:408:EDO:H22	1.99	0.62
2:B:181[B]:TYR:CZ	12:B:557:HOH:O	2.54	0.60
1:A:192:PRO:CB	1:A:197:ILE:HD11	2.32	0.60
2:B:181[B]:TYR:CE2	12:B:557:HOH:O	2.51	0.59
1:A:58:LEU:C	1:A:58:LEU:HD12	2.24	0.58
1:A:156:PRO:O	1:A:196:LEU:HD11	2.04	0.57
2:B:62[B]:CYS:HB2	2:B:343:GLU:CD	2.25	0.57
1:A:108[A]:ASN:HA	12:B:681:HOH:O	1.98	0.56
1:A:192:PRO:HB2	1:A:197:ILE:CD1	2.35	0.56
2:B:300:ILE:HD11	2:B:390:ILE:CD1	2.36	0.56

Continued on next page...

Continued from previous page...

Atom-1	Atom-2	Interatomic distance (Å)	Clash overlap (Å)
1:A:108[B]:ASN:O	12:A:401:HOH:O	2.18	0.55
2:B:44[A]:GLN:HG3	12:B:785:HOH:O	2.07	0.54
1:A:69:LEU:HD11	12:B:669:HOH:O	2.07	0.53
2:B:108:ALA:HB3	2:B:132[B]:ILE:HD13	1.90	0.52
1:A:192:PRO:HB2	1:A:197:ILE:HD11	1.91	0.52
2:B:115:HIS:CE1	2:B:189:GLY:HA2	2.44	0.52
2:B:246:ASN:H	8:B:408:EDO:H21	1.74	0.52
1:A:175:TYR:CE2	3:A:301:F9F:H5	2.46	0.51
2:B:289:THR:OG1	8:B:407:EDO:H11	2.12	0.49
2:B:246:ASN:HB2	8:B:408:EDO:C2	2.43	0.49
2:B:87:LYS:HE3	12:B:595:HOH:O	2.13	0.48
2:B:246:ASN:N	8:B:408:EDO:H21	2.29	0.47
3:A:301:F9F:H3	12:A:518:HOH:O	2.15	0.47
2:B:108:ALA:HB3	2:B:132[B]:ILE:CD1	2.45	0.47
1:A:187:ASN:ND2	12:A:405:HOH:O	2.49	0.45
1:A:176:LEU:HD21	1:A:192:PRO:HB3	1.97	0.45
1:A:211:GLY:O	1:A:212:PHE:HB2	2.17	0.45
2:B:193:GLY:HA2	2:B:280:PHE:O	2.17	0.44
2:B:87:LYS:HD2	2:B:114:GLN:HG3	2.00	0.43
2:B:246:ASN:CB	8:B:408:EDO:H21	2.46	0.43
1:A:53:PRO:HA	1:A:68:ASN:OD1	2.18	0.43
2:B:246:ASN:CA	8:B:408:EDO:H21	2.48	0.43
2:B:87:LYS:HE2	7:B:404:TRP:OXT	2.19	0.43
2:B:16:TYR:O	2:B:281:GLY:HA2	2.19	0.43
2:B:216:ILE:HG21	2:B:224:PRO:HD3	2.01	0.43
1:A:163:LEU:HD21	1:A:196:LEU:HD22	1.99	0.43
1:A:22:PHE:HA	1:A:49:GLU:O	2.19	0.42
1:A:100:LEU:C	1:A:100:LEU:HD13	2.39	0.42
1:A:14:ARG:NH2	12:A:408:HOH:O	2.52	0.42
2:B:79:ASP:HB2	2:B:379:ARG:HB3	2.02	0.42
1:A:157:ASN:OD1	1:A:157:ASN:N	2.52	0.41
2:B:279:TYR:HB3	2:B:286[B]:MET:HE1	2.03	0.41
2:B:286[B]:MET:HE3	2:B:286[B]:MET:HB3	1.44	0.41
1:A:192:PRO:HB2	1:A:197:ILE:HD12	2.03	0.40
2:B:147:PHE:CE2	2:B:151:LEU:HD11	2.56	0.40
1:A:178[B]:SER:HB3	1:A:189:GLY:HA3	2.03	0.40

There are no symmetry-related clashes.

5.3 Torsion angles

5.3.1 Protein backbone

In the following table, the Percentiles column shows the percent Ramachandran outliers of the chain as a percentile score with respect to all X-ray entries followed by that with respect to entries of similar resolution.

The Analysed column shows the number of residues for which the backbone conformation was analysed, and the total number of residues.

Mol	Chain	Analysed	Favoured	Allowed	Outliers	Percentiles	
1	A	273/268 (102%)	267 (98%)	5 (2%)	1 (0%)	34	13
2	B	408/397 (103%)	402 (98%)	6 (2%)	0	100	100
All	All	681/665 (102%)	669 (98%)	11 (2%)	1 (0%)	47	25

All (1) Ramachandran outliers are listed below:

Mol	Chain	Res	Type
1	A	212	PHE

5.3.2 Protein sidechains

In the following table, the Percentiles column shows the percent sidechain outliers of the chain as a percentile score with respect to all X-ray entries followed by that with respect to entries of similar resolution.

The Analysed column shows the number of residues for which the sidechain conformation was analysed, and the total number of residues.

Mol	Chain	Analysed	Rotameric	Outliers	Percentiles	
1	A	205/208 (99%)	205 (100%)	0	100	100
2	B	317/311 (102%)	316 (100%)	1 (0%)	92	84
All	All	522/519 (101%)	521 (100%)	1 (0%)	93	85

All (1) residues with a non-rotameric sidechain are listed below:

Mol	Chain	Res	Type
2	B	65	ILE

Sometimes sidechains can be flipped to improve hydrogen bonding and reduce clashes. There are no such sidechains identified.

5.3.3 RNA ⓘ

There are no RNA molecules in this entry.

5.4 Non-standard residues in protein, DNA, RNA chains ⓘ

There are no non-standard protein/DNA/RNA residues in this entry.

5.5 Carbohydrates ⓘ

There are no monosaccharides in this entry.

5.6 Ligand geometry ⓘ

Of 16 ligands modelled in this entry, 7 are monoatomic - leaving 9 for Mogul analysis.

In the following table, the Counts columns list the number of bonds (or angles) for which Mogul statistics could be retrieved, the number of bonds (or angles) that are observed in the model and the number of bonds (or angles) that are defined in the Chemical Component Dictionary. The Link column lists molecule types, if any, to which the group is linked. The Z score for a bond length (or angle) is the number of standard deviations the observed value is removed from the expected value. A bond length (or angle) with $|Z| > 2$ is considered an outlier worth inspection. RMSZ is the root-mean-square of all Z scores of the bond lengths (or angles).

Mol	Type	Chain	Res	Link	Bond lengths			Bond angles		
					Counts	RMSZ	$\# Z > 2$	Counts	RMSZ	$\# Z > 2$
5	PLP	B	401	2	15,15,16	0.77	1 (6%)	20,22,23	1.11	2 (10%)
8	EDO	B	408	-	3,3,3	0.09	0	2,2,2	0.22	0
3	F9F	A	301	-	22,22,22	0.38	0	32,33,33	0.66	0
9	PEG	B	406	-	6,6,6	0.20	0	5,5,5	0.11	0
10	DMS	B	409	-	3,3,3	0.38	0	3,3,3	0.12	0
8	EDO	B	407	-	3,3,3	0.22	0	2,2,2	0.40	0
7	TRP	B	404	-	12,16,16	0.77	0	12,22,22	0.90	1 (8%)
8	EDO	B	405	-	3,3,3	0.04	0	2,2,2	0.22	0
6	BCN	B	402	-	7,10,10	0.16	0	8,11,11	0.75	0

In the following table, the Chirals column lists the number of chiral outliers, the number of chiral centers analysed, the number of these observed in the model and the number defined in the Chemical Component Dictionary. Similar counts are reported in the Torsion and Rings columns. '-' means no outliers of that kind were identified.

Mol	Type	Chain	Res	Link	Chirals	Torsions	Rings
5	PLP	B	401	2	-	0/6/6/8	0/1/1/1

Continued on next page...

Continued from previous page...

Mol	Type	Chain	Res	Link	Chirals	Torsions	Rings
8	EDO	B	408	-	-	0/1/1/1	-
3	F9F	A	301	-	-	5/20/20/20	0/1/1/1
9	PEG	B	406	-	-	0/4/4/4	-
8	EDO	B	407	-	-	1/1/1/1	-
7	TRP	B	404	-	-	0/3/8/8	0/2/2/2
8	EDO	B	405	-	-	1/1/1/1	-
6	BCN	B	402	-	-	2/8/10/10	-

All (1) bond length outliers are listed below:

Mol	Chain	Res	Type	Atoms	Z	Observed(Å)	Ideal(Å)
5	B	401	PLP	C4A-C4	-2.18	1.47	1.51

All (3) bond angle outliers are listed below:

Mol	Chain	Res	Type	Atoms	Z	Observed(°)	Ideal(°)
5	B	401	PLP	O4P-C5A-C5	2.70	114.49	109.35
5	B	401	PLP	C4A-C4-C5	2.35	123.36	120.94
7	B	404	TRP	CH2-CZ2-CE2	-2.03	117.15	120.08

There are no chirality outliers.

All (9) torsion outliers are listed below:

Mol	Chain	Res	Type	Atoms
8	B	407	EDO	O1-C1-C2-O2
3	A	301	F9F	C3-C4-S12-O21
8	B	405	EDO	O1-C1-C2-O2
3	A	301	F9F	C5-C4-S12-O21
6	B	402	BCN	C2-C1-N1-C3
6	B	402	BCN	C2-C1-N1-C5
3	A	301	F9F	C2-C1-O7-C8
3	A	301	F9F	C6-C1-O7-C8
3	A	301	F9F	C3-C4-S12-N13

There are no ring outliers.

5 monomers are involved in 14 short contacts:

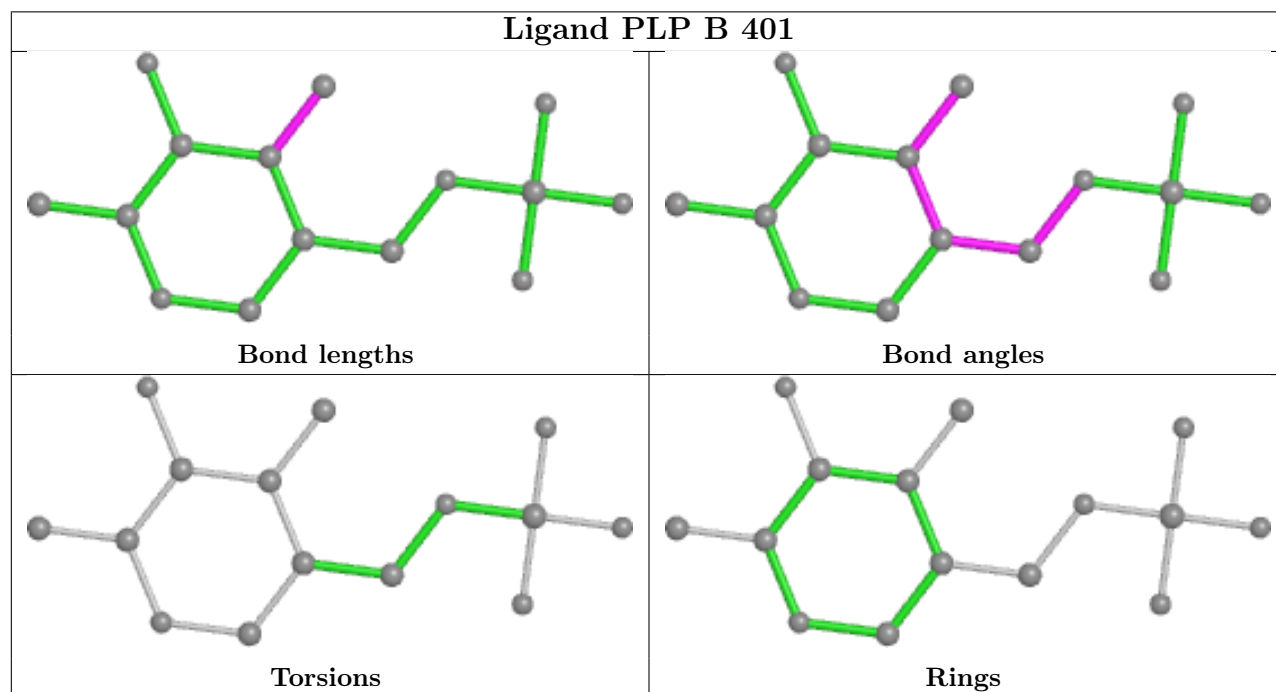
Mol	Chain	Res	Type	Clashes	Symm-Clashes
8	B	408	EDO	7	0
3	A	301	F9F	2	0

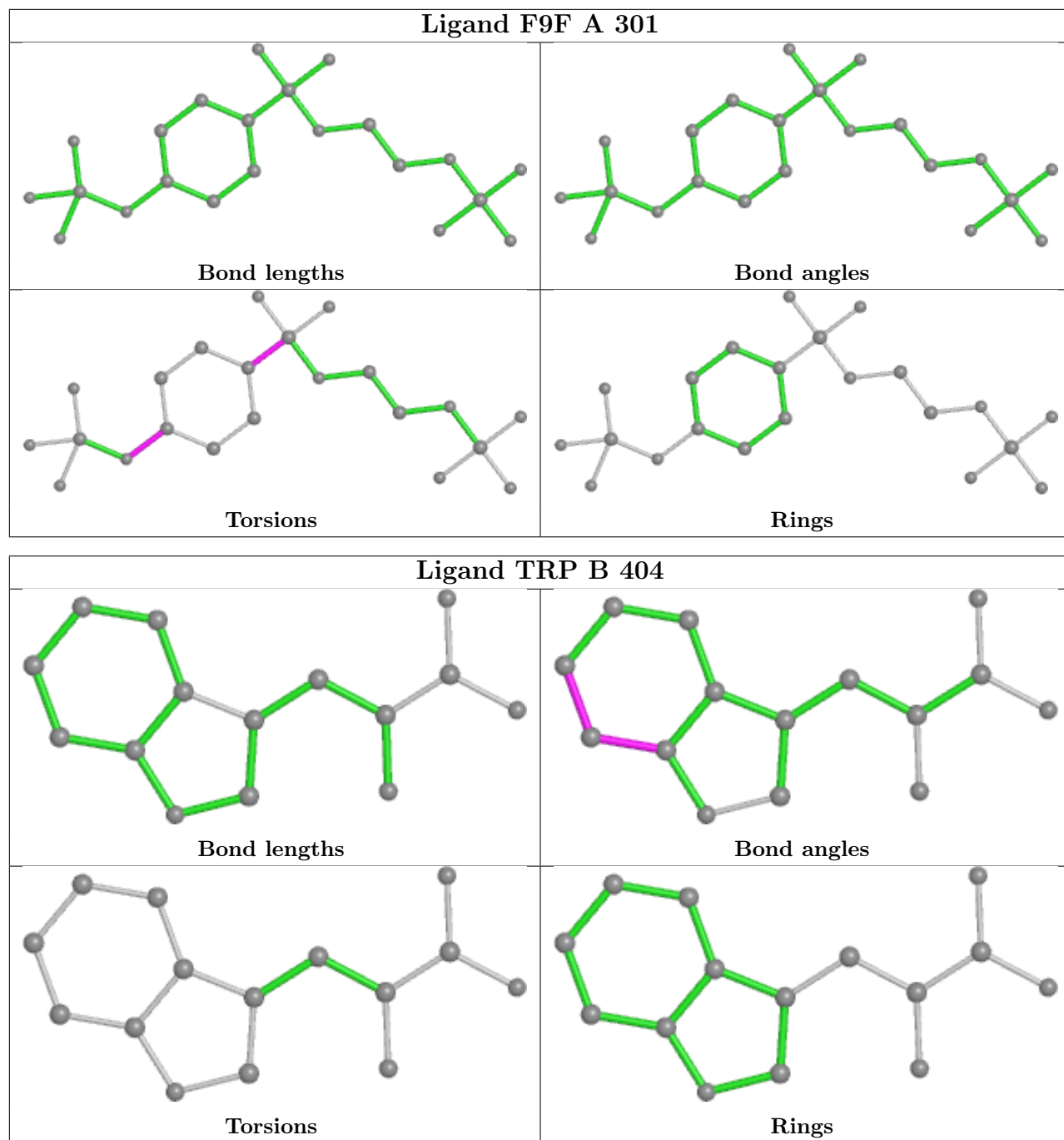
Continued on next page...

Continued from previous page...

Mol	Chain	Res	Type	Clashes	Symm-Clashes
10	B	409	DMS	2	0
8	B	407	EDO	2	0
7	B	404	TRP	1	0

The following is a two-dimensional graphical depiction of Mogul quality analysis of bond lengths, bond angles, torsion angles, and ring geometry for all instances of the Ligand of Interest. In addition, ligands with molecular weight > 250 and outliers as shown on the validation Tables will also be included. For torsion angles, if less than 5% of the Mogul distribution of torsion angles is within 10 degrees of the torsion angle in question, then that torsion angle is considered an outlier. Any bond that is central to one or more torsion angles identified as an outlier by Mogul will be highlighted in the graph. For rings, the root-mean-square deviation (RMSD) between the ring in question and similar rings identified by Mogul is calculated over all ring torsion angles. If the average RMSD is greater than 60 degrees and the minimal RMSD between the ring in question and any Mogul-identified rings is also greater than 60 degrees, then that ring is considered an outlier. The outliers are highlighted in purple. The color gray indicates Mogul did not find sufficient equivalents in the CSD to analyse the geometry.





5.7 Other polymers [i](#)

There are no such residues in this entry.

5.8 Polymer linkage issues [i](#)

There are no chain breaks in this entry.

6 Fit of model and data

6.1 Protein, DNA and RNA chains

In the following table, the column labelled ‘#RSRZ > 2’ contains the number (and percentage) of RSRZ outliers, followed by percent RSRZ outliers for the chain as percentile scores relative to all X-ray entries and entries of similar resolution. The OWAB column contains the minimum, median, 95th percentile and maximum values of the occupancy-weighted average B-factor per residue. The column labelled ‘Q < 0.9’ lists the number of (and percentage) of residues with an average occupancy less than 0.9.

Mol	Chain	Analysed	<RSRZ>	#RSRZ>2	OWAB(Å ²)	Q<0.9
1	A	268/268 (100%)	-0.03	14 (5%) 27 29	10, 18, 37, 57	0
2	B	393/397 (98%)	-0.21	9 (2%) 60 65	8, 13, 25, 73	0
All	All	661/665 (99%)	-0.14	23 (3%) 44 48	8, 15, 33, 73	0

All (23) RSRZ outliers are listed below:

Mol	Chain	Res	Type	RSRZ
2	B	393	ALA	5.8
1	A	192	PRO	5.7
1	A	191	LEU	5.5
2	B	390	ILE	5.3
2	B	394	ARG	4.9
2	B	391	LEU	4.8
1	A	190	ALA	4.3
2	B	147	PHE	4.1
2	B	388	HIS	4.0
2	B	392	LYS	3.9
2	B	385	PHE	3.8
1	A	194	HIS	3.6
1	A	157	ASN	3.4
1	A	193	LEU	3.3
1	A	268	ALA	3.2
1	A	195	HIS	3.2
1	A	13	ASP	3.0
1	A	185	ALA	2.9
2	B	389	ASP	2.8
1	A	203	TYR	2.4
1	A	187	ASN	2.3
1	A	186	GLU	2.2
1	A	247	SER	2.0

6.2 Non-standard residues in protein, DNA, RNA chains ⓘ

There are no non-standard protein/DNA/RNA residues in this entry.

6.3 Carbohydrates ⓘ

There are no monosaccharides in this entry.

6.4 Ligands ⓘ

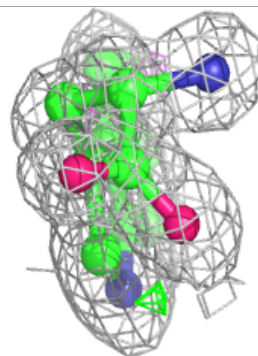
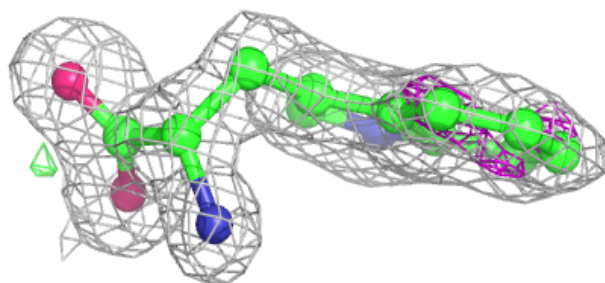
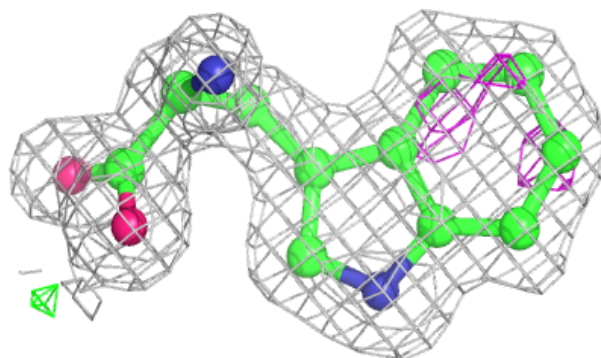
In the following table, the Atoms column lists the number of modelled atoms in the group and the number defined in the chemical component dictionary. The B-factors column lists the minimum, median, 95th percentile and maximum values of B factors of atoms in the group. The column labelled 'Q< 0.9' lists the number of atoms with occupancy less than 0.9.

Mol	Type	Chain	Res	Atoms	RSCC	RSR	B-factors(Å ²)	Q<0.9
10	DMS	B	409	4/4	0.58	0.30	18,30,48,53	0
11	CL	B	412	1/1	0.84	0.06	72,72,72,72	0
8	EDO	B	405	4/4	0.86	0.09	40,41,45,47	0
9	PEG	B	406	7/7	0.88	0.19	30,34,38,43	0
8	EDO	B	408	4/4	0.93	0.27	27,27,32,38	0
11	CL	B	413	1/1	0.93	0.12	61,61,61,61	0
6	BCN	B	402	11/11	0.94	0.12	12,21,25,26	0
8	EDO	B	407	4/4	0.95	0.26	30,33,34,38	0
7	TRP	B	404	15/15	0.97	0.07	16,17,18,19	0
3	F9F	A	301	22/22	0.97	0.08	16,19,21,24	0
5	PLP	B	401	15/16	0.99	0.09	9,10,19,19	0
4	CS	A	302	1/1	1.00	0.02	16,16,16,16	1
4	CS	B	403	1/1	1.00	0.02	17,17,17,17	1
4	CS	B	410	1/1	1.00	0.01	30,30,30,30	1
4	CS	B	411[A]	1/1	1.00	0.06	26,26,26,26	1
4	CS	B	411[B]	1/1	1.00	0.06	12,12,12,12	1

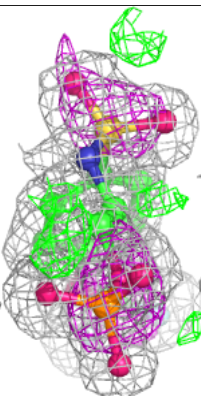
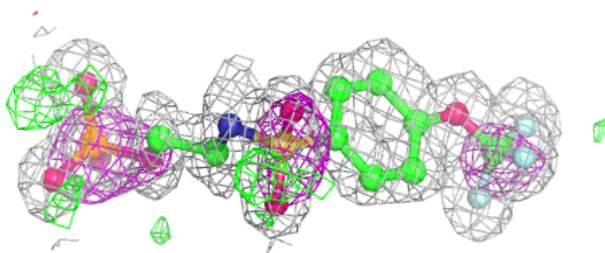
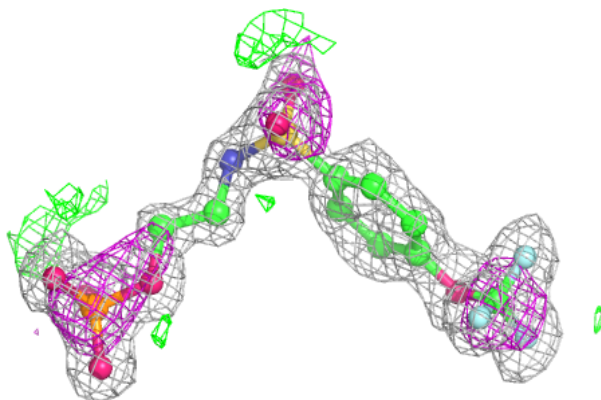
The following is a graphical depiction of the model fit to experimental electron density of all instances of the Ligand of Interest. In addition, ligands with molecular weight > 250 and outliers as shown on the geometry validation Tables will also be included. Each fit is shown from different orientation to approximate a three-dimensional view.

Electron density around TRP B 404:

$2mF_o-DF_c$ (at 0.7 rmsd) in gray
 mF_o-DF_c (at 3 rmsd) in purple (negative)
and green (positive)

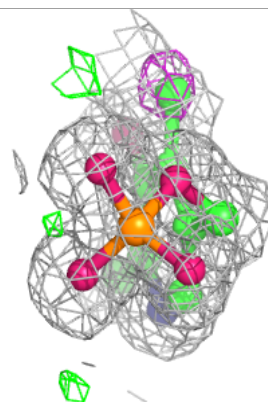
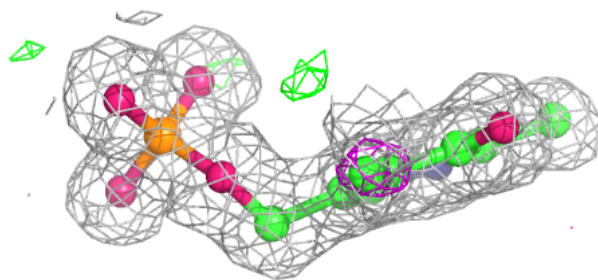
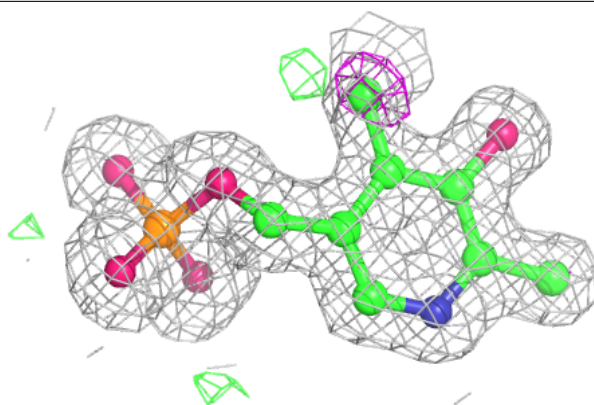
**Electron density around F9F A 301:**

$2mF_o-DF_c$ (at 0.7 rmsd) in gray
 mF_o-DF_c (at 3 rmsd) in purple (negative)
and green (positive)



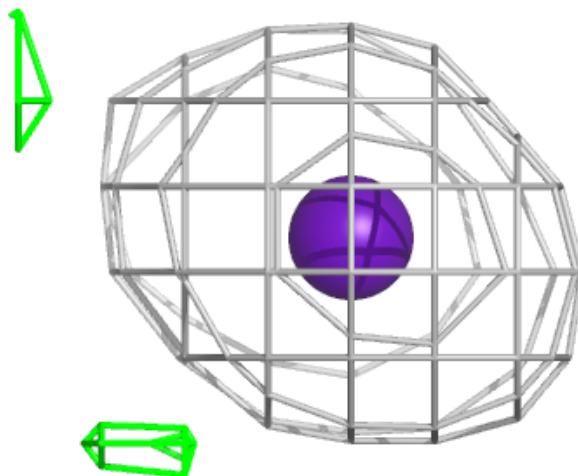
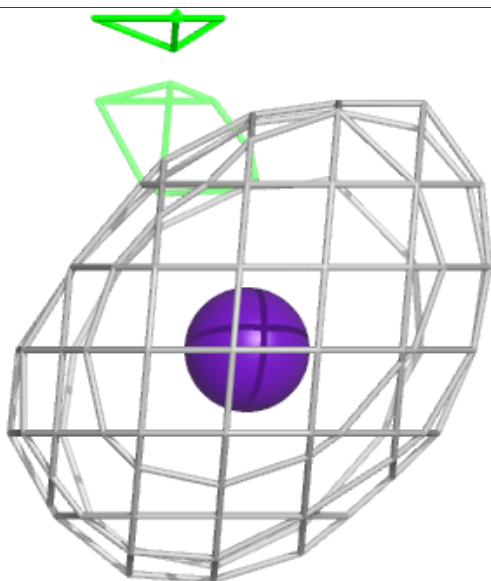
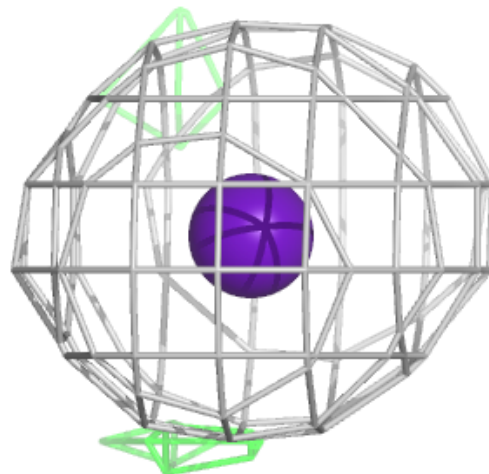
Electron density around PLP B 401:

$2mF_o-DF_c$ (at 0.7 rmsd) in gray
 mF_o-DF_c (at 3 rmsd) in purple (negative)
and green (positive)



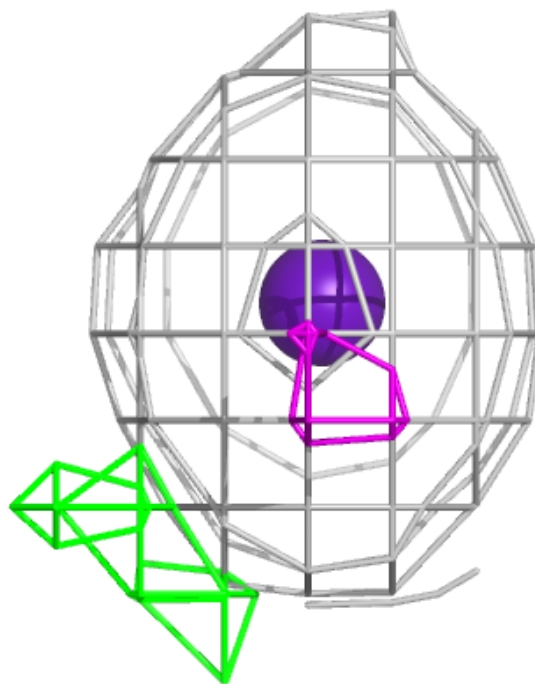
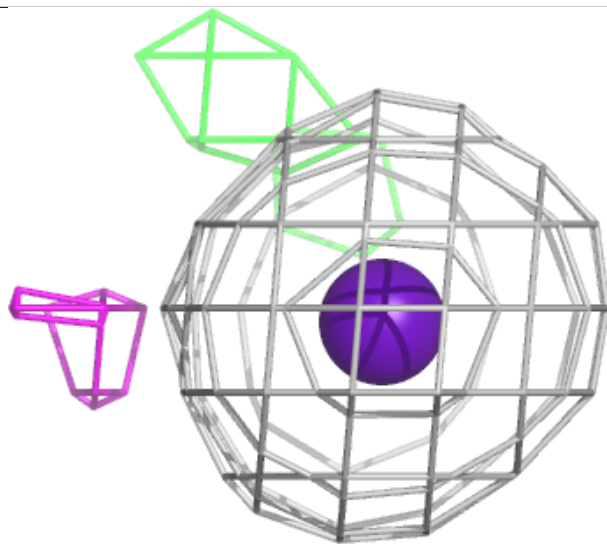
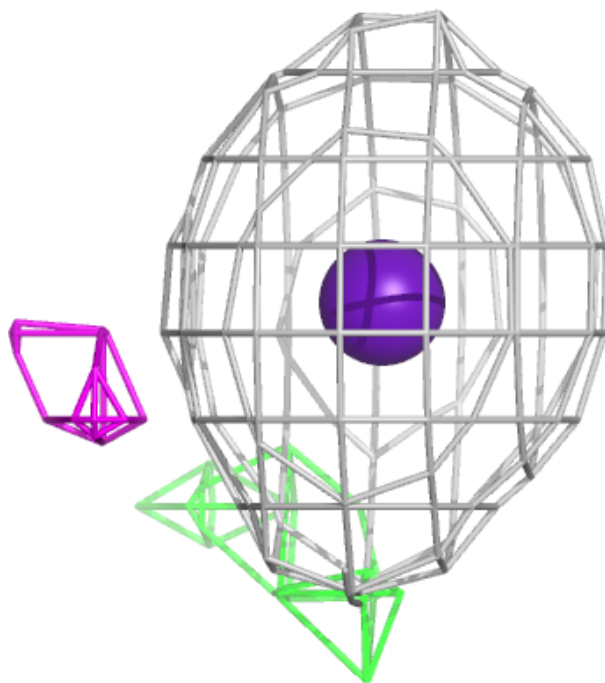
Electron density around CS A 302:

$2mF_o-DF_c$ (at 0.7 rmsd) in gray
 mF_o-DF_c (at 3 rmsd) in purple (negative)
and green (positive)



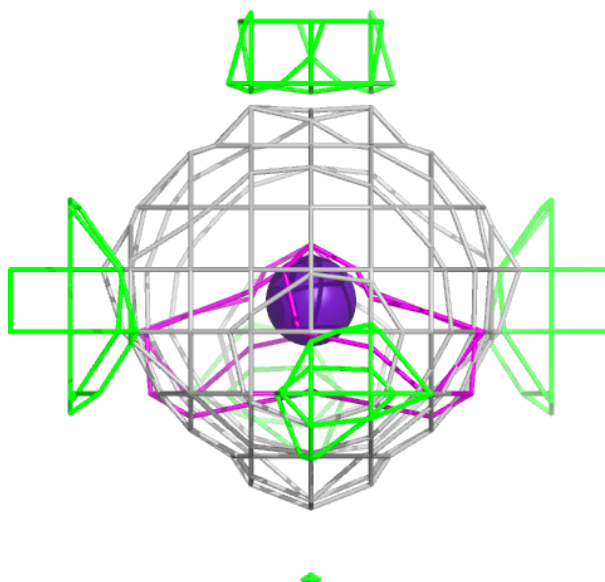
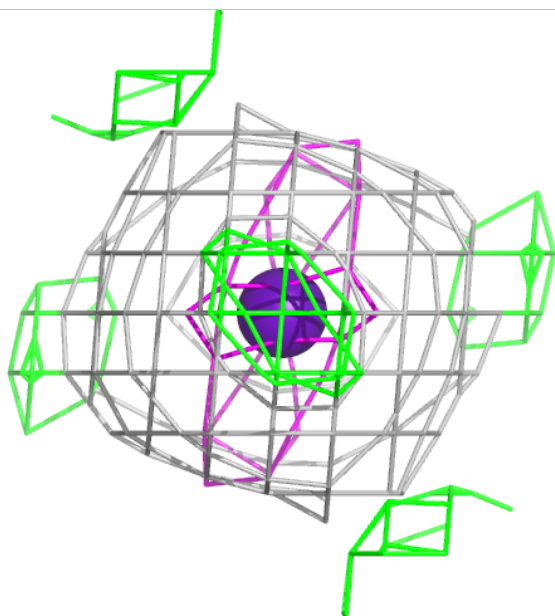
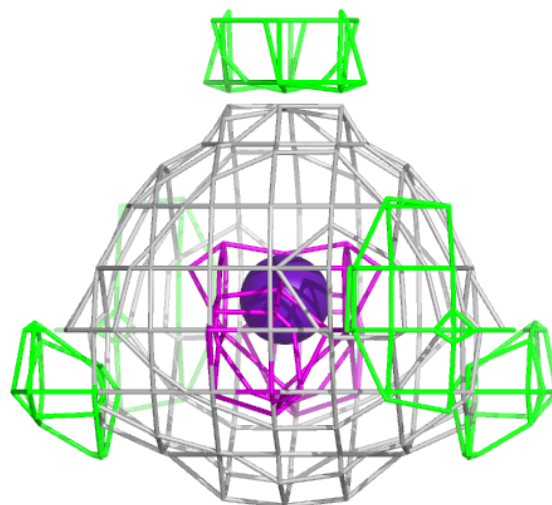
Electron density around CS B 403:

$2mF_o - DF_c$ (at 0.7 rmsd) in gray
 $mF_o - DF_c$ (at 3 rmsd) in purple (negative)
and green (positive)



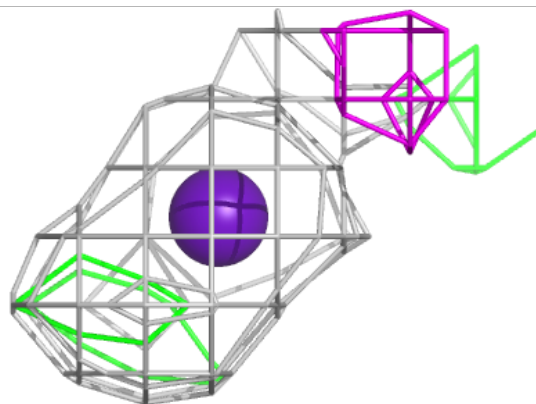
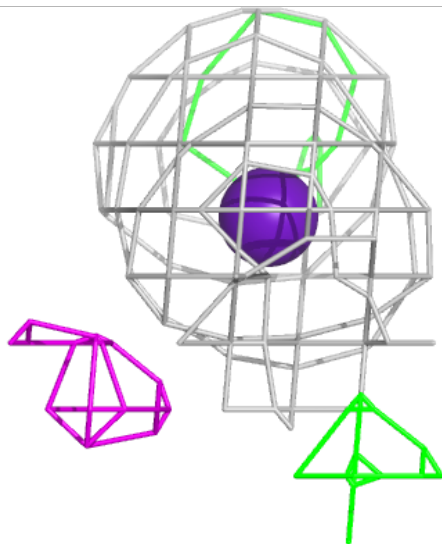
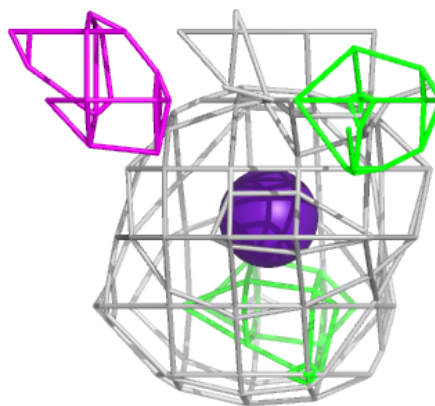
Electron density around CS B 410:

$2mF_o-DF_c$ (at 0.7 rmsd) in gray
 mF_o-DF_c (at 3 rmsd) in purple (negative)
and green (positive)



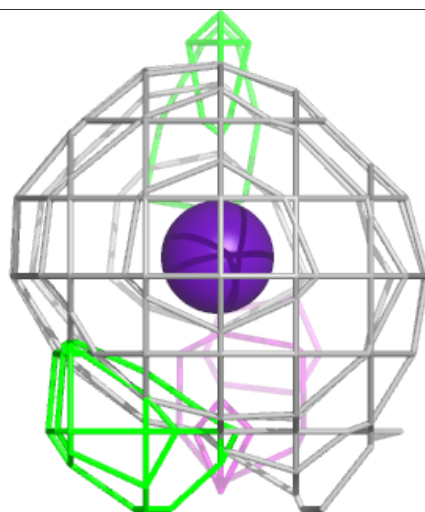
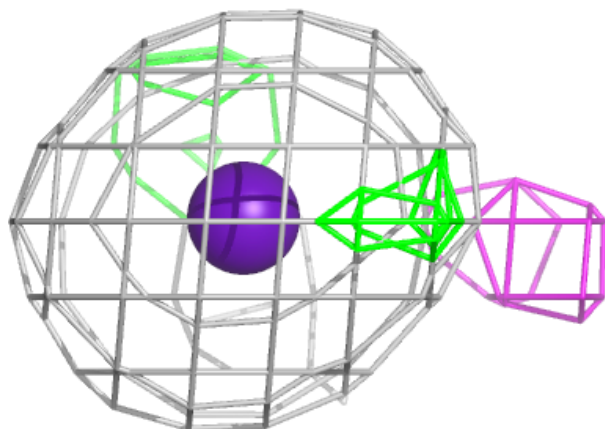
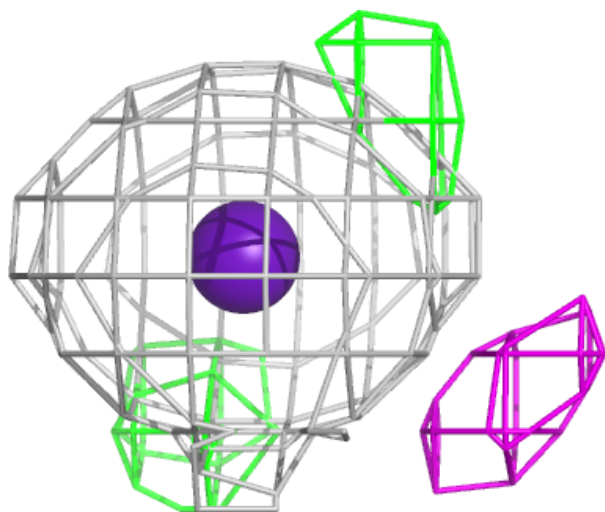
Electron density around CS B 411 (A):

$2mF_o-DF_c$ (at 0.7 rmsd) in gray
 mF_o-DF_c (at 3 rmsd) in purple (negative)
and green (positive)



Electron density around CS B 411 (B):

$2mF_o-DF_c$ (at 0.7 rmsd) in gray
 mF_o-DF_c (at 3 rmsd) in purple (negative)
and green (positive)



6.5 Other polymers [i](#)

There are no such residues in this entry.