



# Full wwPDB X-ray Structure Validation Report ⓘ

Dec 20, 2022 – 06:03 PM EST

PDB ID : 7LYU  
Title : Reelin repeat 8  
Authors : Turk, L.S.; Comoletti, D.  
Deposited on : 2021-03-08  
Resolution : 3.00 Å(reported)

This is a Full wwPDB X-ray Structure Validation Report for a publicly released PDB entry.

We welcome your comments at [validation@mail.wwpdb.org](mailto:validation@mail.wwpdb.org)

A user guide is available at

<https://www.wwpdb.org/validation/2017/XrayValidationReportHelp>

with specific help available everywhere you see the ⓘ symbol.

The types of validation reports are described at

<http://www.wwpdb.org/validation/2017/FAQs#types>.

---

The following versions of software and data (see [references ⓘ](#)) were used in the production of this report:

MolProbity : 4.02b-467  
Mogul : 1.8.5 (274361), CSD as541be (2020)  
Xtriage (Phenix) : 1.13  
EDS : 2.31.2  
Percentile statistics : 20191225.v01 (using entries in the PDB archive December 25th 2019)  
Refmac : 5.8.0158  
CCP4 : 7.0.044 (Gargrove)  
Ideal geometry (proteins) : Engh & Huber (2001)  
Ideal geometry (DNA, RNA) : Parkinson et al. (1996)  
Validation Pipeline (wwPDB-VP) : 2.31.2

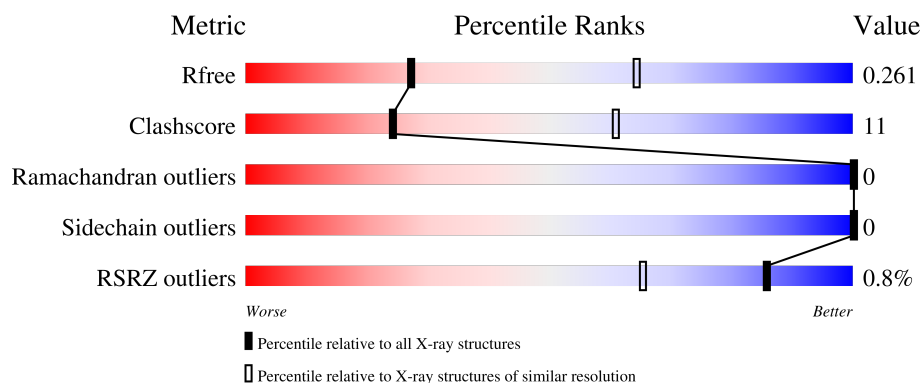
# 1 Overall quality at a glance

The following experimental techniques were used to determine the structure:

## *X-RAY DIFFRACTION*





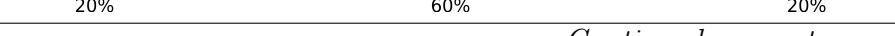
The reported resolution of this entry is 3.00 Å.

Percentile scores (ranging between 0-100) for global validation metrics of the entry are shown in the following graphic. The table shows the number of entries on which the scores are based.



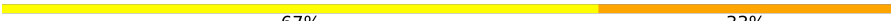
Metric	Whole archive (#Entries)	Similar resolution (#Entries, resolution range(Å))
$R_{free}$	130704	2092 (3.00-3.00)
Clashscore	141614	2416 (3.00-3.00)
Ramachandran outliers	138981	2333 (3.00-3.00)
Sidechain outliers	138945	2336 (3.00-3.00)
RSRZ outliers	127900	1990 (3.00-3.00)

The table below summarises the geometric issues observed across the polymeric chains and their fit to the electron density. The red, orange, yellow and green segments of the lower bar indicate the fraction of residues that contain outliers for  $\geq 3$ , 2, 1 and 0 types of geometric quality criteria respectively. A grey segment represents the fraction of residues that are not modelled. The numeric value for each fraction is indicated below the corresponding segment, with a dot representing fractions  $\leq 5\%$ . The upper red bar (where present) indicates the fraction of residues that have poor fit to the electron density. The numeric value is given above the bar.

Mol	Chain	Length	Quality of chain
1	A	414	 72% 16% 12%
1	B	414	 67% 23% 10%
2	C	6	 33% 67%
3	D	4	 50% 50%
4	E	5	 20% 60% 20%

*Continued on next page...*

*Continued from previous page...*

Mol	Chain	Length	Quality of chain
5	F	3	 67% 33%

## 2 Entry composition

There are 6 unique types of molecules in this entry. The entry contains 5683 atoms, of which 0 are hydrogens and 0 are deuteriums.

In the tables below, the ZeroOcc column contains the number of atoms modelled with zero occupancy, the AltConf column contains the number of residues with at least one atom in alternate conformation and the Trace column contains the number of residues modelled with at most 2 atoms.

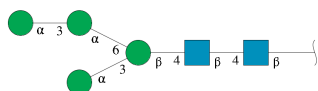
- Molecule 1 is a protein called Reelin.

Mol	Chain	Residues	Atoms					ZeroOcc	AltConf	Trace
1	A	364	Total	C	N	O	S	0	0	0
			2688	1691	467	511	19			
1	B	371	Total	C	N	O	S	0	1	0
			2769	1753	478	519	19			

There are 20 discrepancies between the modelled and reference sequences:

Chain	Residue	Modelled	Actual	Comment	Reference
A	3042	ASP	-	expression tag	UNP Q60841
A	3043	TYR	-	expression tag	UNP Q60841
A	3044	LYS	-	expression tag	UNP Q60841
A	3045	ASP	-	expression tag	UNP Q60841
A	3046	ASP	-	expression tag	UNP Q60841
A	3047	ASP	-	expression tag	UNP Q60841
A	3048	ASP	-	expression tag	UNP Q60841
A	3049	LYS	-	expression tag	UNP Q60841
A	3050	ALA	-	expression tag	UNP Q60841
A	3051	ALA	-	expression tag	UNP Q60841
B	3042	ASP	-	expression tag	UNP Q60841
B	3043	TYR	-	expression tag	UNP Q60841
B	3044	LYS	-	expression tag	UNP Q60841
B	3045	ASP	-	expression tag	UNP Q60841
B	3046	ASP	-	expression tag	UNP Q60841
B	3047	ASP	-	expression tag	UNP Q60841
B	3048	ASP	-	expression tag	UNP Q60841
B	3049	LYS	-	expression tag	UNP Q60841
B	3050	ALA	-	expression tag	UNP Q60841
B	3051	ALA	-	expression tag	UNP Q60841

- Molecule 2 is an oligosaccharide called alpha-D-mannopyranose-(1-3)-alpha-D-mannopyranose-(1-6)-[alpha-D-mannopyranose-(1-3)]beta-D-mannopyranose-(1-4)-2-acetamido-2-deoxy-beta-D-glucopyranose-(1-4)-2-acetamido-2-deoxy-beta-D-glucopyranose.



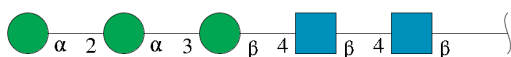
Mol	Chain	Residues	Atoms				ZeroOcc	AltConf	Trace
2	C	6	Total	C	N	O	0	0	0
			72	40	2	30			

- Molecule 3 is an oligosaccharide called alpha-D-mannopyranose-(1-6)-beta-D-mannopyranose-(1-4)-2-acetamido-2-deoxy-beta-D-glucopyranose-(1-4)-2-acetamido-2-deoxy-beta-D-glucopyranose.



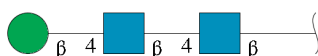
Mol	Chain	Residues	Atoms				ZeroOcc	AltConf	Trace
3	D	4	Total	C	N	O	0	0	0
			50	28	2	20			

- Molecule 4 is an oligosaccharide called alpha-D-mannopyranose-(1-2)-alpha-D-mannopyranose-(1-3)-beta-D-mannopyranose-(1-4)-2-acetamido-2-deoxy-beta-D-glucopyranose-(1-4)-2-acetamido-2-deoxy-beta-D-glucopyranose.



Mol	Chain	Residues	Atoms				ZeroOcc	AltConf	Trace
4	E	5	Total	C	N	O	0	0	0
			61	34	2	25			

- Molecule 5 is an oligosaccharide called beta-D-mannopyranose-(1-4)-2-acetamido-2-deoxy-beta-D-glucopyranose-(1-4)-2-acetamido-2-deoxy-beta-D-glucopyranose.



Mol	Chain	Residues	Atoms				ZeroOcc	AltConf	Trace
5	F	3	Total	C	N	O	0	0	0
			39	22	2	15			

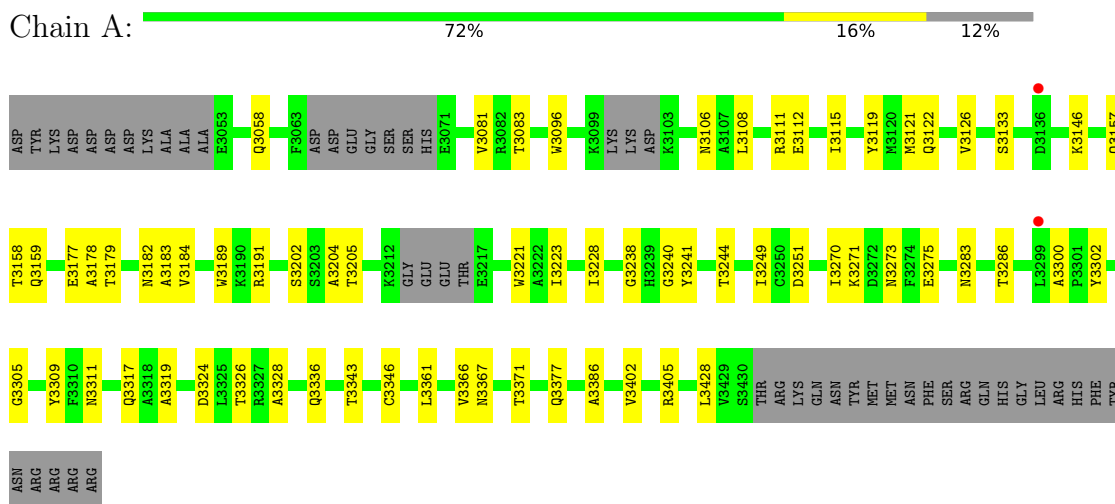
- Molecule 6 is CALCIUM ION (three-letter code: CA) (formula: Ca).

Mol	Chain	Residues	Atoms		ZeroOcc	AltConf
6	A	2	Total 2	Ca 2	0	0
6	B	2	Total 2	Ca 2	0	0

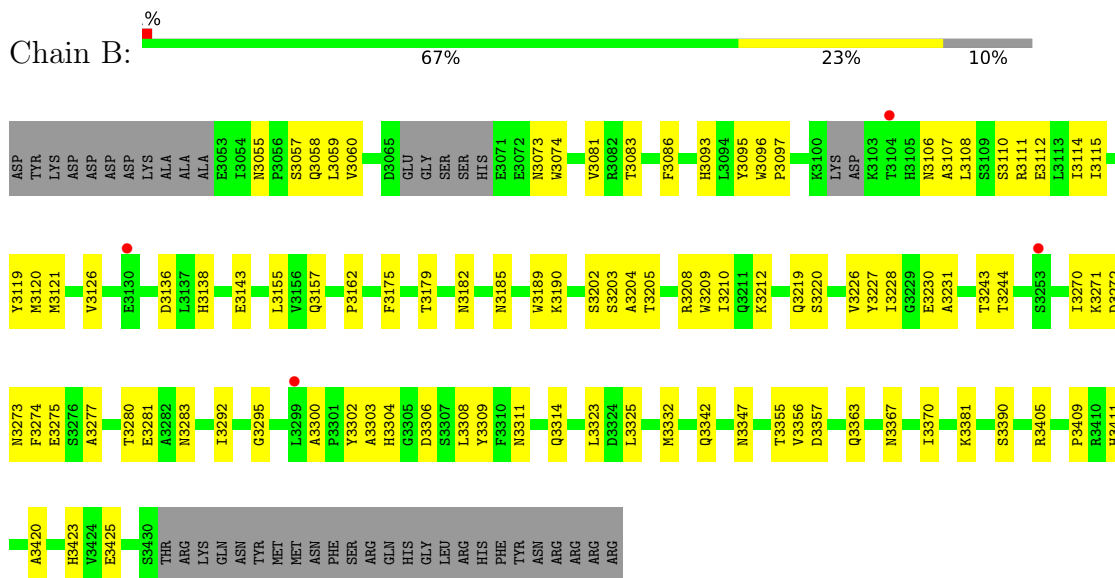
### 3 Residue-property plots

These plots are drawn for all protein, RNA, DNA and oligosaccharide chains in the entry. The first graphic for a chain summarises the proportions of the various outlier classes displayed in the second graphic. The second graphic shows the sequence view annotated by issues in geometry and electron density. Residues are color-coded according to the number of geometric quality criteria for which they contain at least one outlier: green = 0, yellow = 1, orange = 2 and red = 3 or more. A red dot above a residue indicates a poor fit to the electron density ( $RSRZ > 2$ ). Stretches of 2 or more consecutive residues without any outlier are shown as a green connector. Residues present in the sample, but not in the model, are shown in grey.

#### • Molecule 1: Reelin



#### • Molecule 1: Reelin



#### • Molecule 2: alpha-D-mannopyranose-(1-3)-alpha-D-mannopyranose-(1-6)-[alpha-D-mannopyranose-(1-3)]beta-D-mannopyranose-(1-4)-2-acetamido-2-deoxy-beta-D-glucopyranose-(1-4)-2-acetamido-2-deoxy-beta-D-glucopyranose

Chain C:  33% 67%



- Molecule 3: alpha-D-mannopyranose-(1-6)-beta-D-mannopyranose-(1-4)-2-acetamido-2-deoxy-beta-D-glucopyranose-(1-4)-2-acetamido-2-deoxy-beta-D-glucopyranose

Chain D:  50% 50%

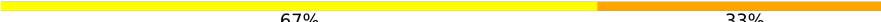


- Molecule 4: alpha-D-mannopyranose-(1-2)-alpha-D-mannopyranose-(1-3)-beta-D-mannopyranose-(1-4)-2-acetamido-2-deoxy-beta-D-glucopyranose-(1-4)-2-acetamido-2-deoxy-beta-D-glucopyranose

Chain E:  20% 60% 20%



- Molecule 5: beta-D-mannopyranose-(1-4)-2-acetamido-2-deoxy-beta-D-glucopyranose-(1-4)-2-acetamido-2-deoxy-beta-D-glucopyranose

Chain F:  67% 33%





## 4 Data and refinement statistics

Property	Value	Source
Space group	P 1 21 1	Depositor
Cell constants a, b, c, $\alpha$ , $\beta$ , $\gamma$	60.17Å 104.06Å 67.61Å 90.00° 104.11° 90.00°	Depositor
Resolution (Å)	45.12 – 3.00 45.12 – 3.00	Depositor EDS
% Data completeness (in resolution range)	99.9 (45.12-3.00) 91.8 (45.12-3.00)	Depositor EDS
$R_{merge}$	(Not available)	Depositor
$R_{sym}$	(Not available)	Depositor
$\langle I/\sigma(I) \rangle$ <sup>1</sup>	1.13 (at 3.01Å)	Xtriage
Refinement program	PHENIX 1.19.1_4122	Depositor
R, $R_{free}$	0.227 , 0.264 0.226 , 0.261	Depositor DCC
$R_{free}$ test set	826 reflections (5.08%)	wwPDB-VP
Wilson B-factor (Å <sup>2</sup> )	55.4	Xtriage
Anisotropy	0.260	Xtriage
Bulk solvent $k_{sol}$ (e/Å <sup>3</sup> ), $B_{sol}$ (Å <sup>2</sup> )	0.32 , 42.3	EDS
L-test for twinning <sup>2</sup>	$\langle  L  \rangle = 0.48$ , $\langle L^2 \rangle = 0.31$	Xtriage
Estimated twinning fraction	No twinning to report.	Xtriage
$F_o, F_c$ correlation	0.90	EDS
Total number of atoms	5683	wwPDB-VP
Average B, all atoms (Å <sup>2</sup> )	64.0	wwPDB-VP

Xtriage's analysis on translational NCS is as follows: *The largest off-origin peak in the Patterson function is 5.57% of the height of the origin peak. No significant pseudotranslation is detected.*

<sup>1</sup>Intensities estimated from amplitudes.

<sup>2</sup>Theoretical values of  $\langle |L| \rangle$ ,  $\langle L^2 \rangle$  for acentric reflections are 0.5, 0.333 respectively for untwinned datasets, and 0.375, 0.2 for perfectly twinned datasets.

## 5 Model quality

### 5.1 Standard geometry

Bond lengths and bond angles in the following residue types are not validated in this section: BMA, NAG, CA, MAN

The Z score for a bond length (or angle) is the number of standard deviations the observed value is removed from the expected value. A bond length (or angle) with  $|Z| > 5$  is considered an outlier worth inspection. RMSZ is the root-mean-square of all Z scores of the bond lengths (or angles).

Mol	Chain	Bond lengths		Bond angles	
		RMSZ	$\# Z  > 5$	RMSZ	$\# Z  > 5$
1	A	0.29	0/2760	0.56	0/3774
1	B	0.31	0/2844	0.57	0/3883
All	All	0.30	0/5604	0.56	0/7657

There are no bond length outliers.

There are no bond angle outliers.

There are no chirality outliers.

There are no planarity outliers.

### 5.2 Too-close contacts

In the following table, the Non-H and H(model) columns list the number of non-hydrogen atoms and hydrogen atoms in the chain respectively. The H(added) column lists the number of hydrogen atoms added and optimized by MolProbity. The Clashes column lists the number of clashes within the asymmetric unit, whereas Symm-Clashes lists symmetry-related clashes.

Mol	Chain	Non-H	H(model)	H(added)	Clashes	Symm-Clashes
1	A	2688	0	2371	48	0
1	B	2769	0	2482	69	0
2	C	72	0	61	0	0
3	D	50	0	43	8	0
4	E	61	0	52	1	0
5	F	39	0	34	1	0
6	A	2	0	0	0	0
6	B	2	0	0	0	0
All	All	5683	0	5043	118	0

The all-atom clashscore is defined as the number of clashes found per 1000 atoms (including hydrogen atoms). The all-atom clashscore for this structure is 11.

All (118) close contacts within the same asymmetric unit are listed below, sorted by their clash magnitude.

Atom-1	Atom-2	Interatomic distance (Å)	Clash overlap (Å)
1:A:3184:VAL:HG21	3:D:1:NAG:H83	1.63	0.79
1:B:3274:PHE:CE2	1:B:3308:LEU:HB2	2.17	0.79
1:B:3059:LEU:HD11	1:B:3073:ASN:HB3	1.67	0.76
1:A:3096:TRP:CD1	1:A:3106:ASN:HB2	2.23	0.74
1:B:3182:ASN:HD22	4:E:1:NAG:H62	1.53	0.73
1:A:3336:GLN:HB2	1:A:3386:ALA:HB2	1.72	0.72
1:A:3324:ASP:OD1	1:A:3326:THR:HG22	1.91	0.71
1:A:3177:GLU:HB3	3:D:1:NAG:H62	1.72	0.70
1:B:3243:THR:HG22	1:B:3244:THR:H	1.56	0.70
1:A:3367:ASN:HD21	1:A:3371:THR:HB	1.55	0.70
1:B:3274:PHE:HE2	1:B:3308:LEU:HB2	1.54	0.69
1:A:3178:ALA:H	3:D:2:NAG:H82	1.58	0.69
1:A:3096:TRP:HD1	1:A:3106:ASN:HB2	1.57	0.68
1:A:3157:GLN:HB2	1:A:3179:THR:HG23	1.76	0.67
1:A:3328:ALA:HA	1:A:3428:LEU:HA	1.76	0.67
1:B:3314:GLN:O	1:B:3411:HIS:NE2	2.24	0.66
1:B:3136:ASP:O	1:B:3182:ASN:ND2	2.30	0.63
1:A:3184:VAL:CG2	3:D:1:NAG:H83	2.29	0.63
1:B:3273:ASN:HB3	1:B:3423:HIS:HD2	1.65	0.62
1:A:3182:ASN:OD1	1:A:3183:ALA:N	2.33	0.61
1:A:3112:GLU:HB3	1:A:3204:ALA:HB1	1.83	0.61
1:A:3058:GLN:HE22	1:A:3244:THR:HA	1.67	0.59
1:A:3221:TRP:CZ3	1:A:3223:ILE:HD11	2.38	0.58
1:B:3114:ILE:CD1	1:B:3203:SER:HA	2.33	0.58
1:B:3367:ASN:HB3	1:B:3370:ILE:HB	1.84	0.58
1:B:3271:LYS:HD2	1:B:3425:GLU:HG3	1.85	0.58
1:B:3115:ILE:HD12	1:B:3205:THR:HB	1.86	0.58
1:B:3114:ILE:HD12	1:B:3203:SER:HA	1.85	0.58
1:A:3191:ARG:NH2	1:A:3251:ASP:OD2	2.37	0.57
1:B:3096:TRP:CD1	1:B:3106:ASN:HB3	2.39	0.57
1:B:3059:LEU:HD23	1:B:3228:ILE:HD12	1.87	0.57
1:B:3073:ASN:O	1:B:3111:ARG:HG3	2.04	0.57
1:B:3202:SER:HB3	1:B:3205:THR:OG1	2.04	0.57
1:A:3366:VAL:HG12	1:A:3402:VAL:HG22	1.87	0.56
1:A:3182:ASN:HB3	3:D:1:NAG:HN2	1.72	0.55
1:B:3055:ASN:ND2	1:B:3203:SER:O	2.37	0.55
1:B:3095:TYR:CE1	1:B:3220:SER:HB2	2.42	0.55
1:B:3342:GLN:HG3	1:B:3347:ASN:HB2	1.89	0.55
1:B:3074:TRP:HH2	1:B:3226:VAL:HG11	1.72	0.55
1:B:3243:THR:HG22	1:B:3244:THR:N	2.22	0.55

*Continued on next page...*

*Continued from previous page...*

Atom-1	Atom-2	Interatomic distance (Å)	Clash overlap (Å)
1:B:3274:PHE:CD2	1:B:3308:LEU:HB2	2.42	0.54
1:B:3120:MET:HG2	1:B:3231:ALA:HA	1.89	0.54
1:B:3112:GLU:HB3	1:B:3204:ALA:HB1	1.89	0.54
1:B:3121:MET:HG3	1:B:3228:ILE:HG12	1.89	0.54
1:B:3300:ALA:HB1	1:B:3302:TYR:HD1	1.73	0.54
1:B:3357:ASP:O	1:B:3409:PRO:HG2	2.08	0.53
1:B:3270:ILE:HD11	1:B:3283:ASN:HB3	1.89	0.53
1:A:3300:ALA:HB1	1:A:3302:TYR:HD1	1.74	0.53
1:B:3157:GLN:HB2	1:B:3179:THR:HG23	1.91	0.52
1:A:3058:GLN:NE2	1:A:3244:THR:HA	2.24	0.52
1:B:3096:TRP:O	1:B:3220:SER:HA	2.08	0.52
1:B:3057:SER:HB3	1:B:3114:ILE:HG23	1.90	0.52
1:B:3272:ASP:HB3	1:B:3274:PHE:HE1	1.74	0.52
1:A:3159:GLN:HB3	3:D:2:NAG:H83	1.91	0.52
1:B:3057:SER:O	1:B:3058:GLN:NE2	2.41	0.51
1:B:3355:THR:OG1	1:B:3381:LYS:NZ	2.44	0.51
1:A:3202:SER:HB3	1:A:3205:THR:OG1	2.11	0.51
1:B:3273:ASN:HB3	1:B:3423:HIS:CD2	2.45	0.51
1:A:3271:LYS:O	1:A:3283:ASN:ND2	2.43	0.51
1:A:3178:ALA:H	3:D:2:NAG:C8	2.22	0.51
1:B:3096:TRP:CZ2	1:B:3108:LEU:HB2	2.45	0.51
1:B:3303:ALA:HA	1:B:3423:HIS:CE1	2.45	0.50
1:B:3332:MET:HG2	1:B:3390:SER:HB2	1.92	0.50
1:B:3185:ASN:O	1:B:3190:LYS:HD2	2.12	0.50
1:B:3138:HIS:HD2	1:B:3219:GLN:HG2	1.76	0.50
1:B:3143:GLU:HG2	1:B:3155:LEU:HD23	1.94	0.50
1:A:3133:SER:O	1:A:3184:VAL:HG22	2.12	0.50
1:A:3096:TRP:CZ2	1:A:3108:LEU:HB2	2.47	0.49
1:B:3059:LEU:CD1	1:B:3073:ASN:HB3	2.39	0.49
1:A:3121:MET:HG3	1:A:3228:ILE:HG12	1.94	0.49
1:A:3146:LYS:HD3	1:A:3202:SER:HB2	1.94	0.48
1:A:3309:TYR:CZ	1:A:3311:ASN:HB2	2.48	0.48
1:B:3210:ILE:HG12	1:B:3212:LYS:HG3	1.95	0.48
1:B:3308:LEU:O	1:B:3420:ALA:HA	2.13	0.48
1:B:3060:VAL:HG22	1:B:3227:TYR:HD1	1.79	0.47
1:B:3309:TYR:CE2	1:B:3311:ASN:HB2	2.49	0.47
1:B:3107:ALA:HA	1:B:3209:TRP:O	2.14	0.47
1:A:3126:VAL:HG23	1:A:3189:TRP:CD2	2.49	0.47
1:B:3119:TYR:CD1	1:B:3230:GLU:HA	2.49	0.47
1:A:3286:THR:OG1	1:A:3319:ALA:HB3	2.16	0.47
1:B:3162:PRO:HB2	1:B:3356:VAL:HG12	1.96	0.46

*Continued on next page...*

*Continued from previous page...*

Atom-1	Atom-2	Interatomic distance (Å)	Clash overlap (Å)
1:A:3111:ARG:HG2	1:A:3112:GLU:N	2.30	0.46
1:A:3361:LEU:HD22	1:A:3377:GLN:HG2	1.98	0.46
1:A:3249:ILE:O	1:A:3249:ILE:HG13	2.14	0.46
1:B:3363:GLN:OE1	1:B:3405:ARG:NH2	2.35	0.46
1:B:3275:GLU:OE2	1:B:3304:HIS:CE1	2.69	0.45
1:B:3111:ARG:HG3	1:B:3111:ARG:H	1.59	0.45
1:B:3274:PHE:N	1:B:3274:PHE:CD1	2.83	0.44
1:B:3108:LEU:O	1:B:3208:ARG:HA	2.17	0.44
1:A:3309:TYR:CE2	1:A:3311:ASN:HB2	2.52	0.44
1:A:3191:ARG:NH1	1:A:3240:GLY:O	2.51	0.43
1:A:3273:ASN:OD1	1:A:3273:ASN:N	2.45	0.43
1:B:3086:PHE:HB3	1:B:3093:HIS:CE1	2.54	0.43
5:F:1:NAG:H83	5:F:1:NAG:H3	2.00	0.43
1:B:3162:PRO:HG3	1:B:3175:PHE:CE2	2.54	0.43
1:A:3115:ILE:HG23	1:A:3119:TYR:CD2	2.53	0.43
1:B:3302:TYR:CD1	1:B:3302:TYR:N	2.87	0.43
1:B:3126:VAL:HG23	1:B:3189:TRP:CD2	2.54	0.42
1:B:3323:LEU:HD23	1:B:3325:LEU:HD21	2.02	0.42
1:A:3122:GLN:HE22	1:A:3241:TYR:HA	1.83	0.42
1:A:3238:GLY:HA3	1:A:3367:ASN:O	2.20	0.42
1:A:3343:THR:HG23	1:A:3346:CYS:H	1.84	0.42
1:B:3280:THR:HG21	1:B:3292:ILE:HD11	2.00	0.42
1:A:3182:ASN:CB	3:D:1:NAG:HN2	2.32	0.42
1:B:3096:TRP:HZ2	1:B:3108:LEU:HB2	1.84	0.41
1:A:3367:ASN:ND2	1:A:3371:THR:HB	2.31	0.41
1:A:3081:VAL:HG12	1:A:3083:THR:HG23	2.02	0.41
1:B:3277:ALA:O	1:B:3281:GLU:HG3	2.20	0.41
1:B:3081:VAL:HG12	1:B:3083:THR:HG23	2.02	0.41
1:A:3275:GLU:OE2	1:A:3305:GLY:HA3	2.21	0.41
1:B:3292:ILE:HG23	1:B:3306[A]:ASP:HB3	2.02	0.41
1:B:3096:TRP:HA	1:B:3097:PRO:HD3	1.86	0.41
1:A:3270:ILE:HD11	1:A:3283:ASN:HB3	2.03	0.40
1:A:3317:GLN:HG3	1:A:3405:ARG:HD2	2.02	0.40
1:A:3158:THR:HG22	1:A:3159:GLN:N	2.36	0.40
1:B:3292:ILE:HG23	1:B:3306[B]:ASP:HB3	2.02	0.40
1:B:3074:TRP:HA	1:B:3110:SER:HA	2.02	0.40
1:B:3295:GLY:HA3	1:B:3309:TYR:CZ	2.57	0.40

There are no symmetry-related clashes.

## 5.3 Torsion angles

### 5.3.1 Protein backbone

In the following table, the Percentiles column shows the percent Ramachandran outliers of the chain as a percentile score with respect to all X-ray entries followed by that with respect to entries of similar resolution.

The Analysed column shows the number of residues for which the backbone conformation was analysed, and the total number of residues.

Mol	Chain	Analysed	Favoured	Allowed	Outliers	Percentiles	
1	A	356/414 (86%)	340 (96%)	16 (4%)	0	100	100
1	B	366/414 (88%)	348 (95%)	18 (5%)	0	100	100
All	All	722/828 (87%)	688 (95%)	34 (5%)	0	100	100

There are no Ramachandran outliers to report.

### 5.3.2 Protein sidechains

In the following table, the Percentiles column shows the percent sidechain outliers of the chain as a percentile score with respect to all X-ray entries followed by that with respect to entries of similar resolution.

The Analysed column shows the number of residues for which the sidechain conformation was analysed, and the total number of residues.

Mol	Chain	Analysed	Rotameric	Outliers	Percentiles	
1	A	269/360 (75%)	269 (100%)	0	100	100
1	B	276/360 (77%)	276 (100%)	0	100	100
All	All	545/720 (76%)	545 (100%)	0	100	100

There are no protein residues with a non-rotameric sidechain to report.

Sometimes sidechains can be flipped to improve hydrogen bonding and reduce clashes. All (3) such sidechains are listed below:

Mol	Chain	Res	Type
1	A	3058	GLN
1	B	3138	HIS
1	B	3423	HIS

### 5.3.3 RNA ⓘ

There are no RNA molecules in this entry.

## 5.4 Non-standard residues in protein, DNA, RNA chains ⓘ

There are no non-standard protein/DNA/RNA residues in this entry.

## 5.5 Carbohydrates ⓘ

18 monosaccharides are modelled in this entry.

In the following table, the Counts columns list the number of bonds (or angles) for which Mogul statistics could be retrieved, the number of bonds (or angles) that are observed in the model and the number of bonds (or angles) that are defined in the Chemical Component Dictionary. The Link column lists molecule types, if any, to which the group is linked. The Z score for a bond length (or angle) is the number of standard deviations the observed value is removed from the expected value. A bond length (or angle) with  $|Z| > 2$  is considered an outlier worth inspection. RMSZ is the root-mean-square of all Z scores of the bond lengths (or angles).

Mol	Type	Chain	Res	Link	Bond lengths			Bond angles		
					Counts	RMSZ	$\# Z  > 2$	Counts	RMSZ	$\# Z  > 2$
2	NAG	C	1	2,1	14,14,15	0.18	0	17,19,21	0.98	1 (5%)
2	NAG	C	2	2	14,14,15	0.29	0	17,19,21	0.37	0
2	BMA	C	3	2	11,11,12	0.63	0	15,15,17	0.88	0
2	MAN	C	4	2	11,11,12	0.76	0	15,15,17	1.00	2 (13%)
2	MAN	C	5	2	11,11,12	1.06	1 (9%)	15,15,17	0.96	1 (6%)
2	MAN	C	6	2	11,11,12	0.80	0	15,15,17	1.01	2 (13%)
3	NAG	D	1	3,1	14,14,15	0.95	1 (7%)	17,19,21	1.26	3 (17%)
3	NAG	D	2	3	14,14,15	1.01	2 (14%)	17,19,21	0.98	0
3	BMA	D	3	3	11,11,12	0.86	0	15,15,17	1.31	2 (13%)
3	MAN	D	4	3	11,11,12	1.41	2 (18%)	15,15,17	2.23	4 (26%)
4	NAG	E	1	4,1	14,14,15	0.62	1 (7%)	17,19,21	0.72	0
4	NAG	E	2	4	14,14,15	0.43	0	17,19,21	0.41	0
4	BMA	E	3	4	11,11,12	0.74	0	15,15,17	0.94	1 (6%)
4	MAN	E	4	4	11,11,12	1.77	3 (27%)	15,15,17	2.05	3 (20%)
4	MAN	E	5	4	11,11,12	0.86	1 (9%)	15,15,17	1.90	3 (20%)
5	NAG	F	1	5,1	14,14,15	0.37	0	17,19,21	1.33	2 (11%)
5	NAG	F	2	5	14,14,15	0.33	0	17,19,21	0.98	1 (5%)
5	BMA	F	3	5	11,11,12	0.92	0	15,15,17	0.91	1 (6%)

In the following table, the Chirals column lists the number of chiral outliers, the number of chiral centers analysed, the number of these observed in the model and the number defined in the Chemical Component Dictionary. Similar counts are reported in the Torsion and Rings columns. '-' means no outliers of that kind were identified.

Mol	Type	Chain	Res	Link	Chirals	Torsions	Rings
2	NAG	C	1	2,1	-	1/6/23/26	0/1/1/1
2	NAG	C	2	2	-	0/6/23/26	0/1/1/1
2	BMA	C	3	2	-	0/2/19/22	0/1/1/1
2	MAN	C	4	2	-	0/2/19/22	0/1/1/1
2	MAN	C	5	2	-	0/2/19/22	0/1/1/1
2	MAN	C	6	2	-	1/2/19/22	0/1/1/1
3	NAG	D	1	3,1	-	3/6/23/26	0/1/1/1
3	NAG	D	2	3	-	0/6/23/26	0/1/1/1
3	BMA	D	3	3	-	2/2/19/22	0/1/1/1
3	MAN	D	4	3	-	2/2/19/22	0/1/1/1
4	NAG	E	1	4,1	-	2/6/23/26	0/1/1/1
4	NAG	E	2	4	-	4/6/23/26	0/1/1/1
4	BMA	E	3	4	-	2/2/19/22	0/1/1/1
4	MAN	E	4	4	-	2/2/19/22	0/1/1/1
4	MAN	E	5	4	-	0/2/19/22	1/1/1/1
5	NAG	F	1	5,1	-	6/6/23/26	0/1/1/1
5	NAG	F	2	5	-	0/6/23/26	0/1/1/1
5	BMA	F	3	5	-	2/2/19/22	0/1/1/1

All (11) bond length outliers are listed below:

Mol	Chain	Res	Type	Atoms	Z	Observed(Å)	Ideal(Å)
4	E	4	MAN	C2-C3	3.63	1.57	1.52
3	D	1	NAG	O5-C1	-3.09	1.38	1.43
3	D	4	MAN	C1-C2	3.00	1.59	1.52
4	E	4	MAN	O2-C2	2.94	1.49	1.43
4	E	4	MAN	C1-C2	2.85	1.58	1.52
3	D	4	MAN	O5-C1	2.79	1.48	1.43
2	C	5	MAN	O5-C1	-2.55	1.39	1.43
3	D	2	NAG	C1-C2	-2.32	1.48	1.52
4	E	1	NAG	O5-C1	-2.16	1.40	1.43
3	D	2	NAG	O5-C1	-2.15	1.40	1.43
4	E	5	MAN	C1-C2	2.04	1.56	1.52

All (26) bond angle outliers are listed below:



Mol	Chain	Res	Type	Atoms	Z	Observed(°)	Ideal(°)
4	E	5	MAN	C1-O5-C5	6.32	120.75	112.19
3	D	4	MAN	C1-O5-C5	6.06	120.40	112.19
4	E	4	MAN	C1-O5-C5	4.98	118.94	112.19
5	F	1	NAG	C2-N2-C7	4.47	129.27	122.90
4	E	4	MAN	C1-C2-C3	4.21	114.83	109.67
3	D	4	MAN	O5-C1-C2	3.78	116.61	110.77
5	F	2	NAG	C1-O5-C5	3.44	116.85	112.19
3	D	4	MAN	O2-C2-C3	-2.85	104.42	110.14
2	C	6	MAN	C1-O5-C5	2.64	115.77	112.19
3	D	3	BMA	O5-C1-C2	2.57	114.74	110.77
4	E	4	MAN	O2-C2-C1	2.57	114.41	109.15
2	C	1	NAG	C1-O5-C5	2.55	115.65	112.19
3	D	4	MAN	C1-C2-C3	2.51	112.75	109.67
3	D	1	NAG	C1-C2-N2	2.42	114.62	110.49
5	F	1	NAG	C1-C2-N2	2.39	114.57	110.49
2	C	5	MAN	O2-C2-C3	-2.30	105.54	110.14
2	C	4	MAN	C1-O5-C5	2.26	115.25	112.19
4	E	3	BMA	O2-C2-C3	-2.23	105.67	110.14
2	C	4	MAN	O2-C2-C3	-2.22	105.69	110.14
3	D	1	NAG	O4-C4-C3	-2.18	105.32	110.35
5	F	3	BMA	O2-C2-C3	-2.16	105.82	110.14
4	E	5	MAN	O2-C2-C3	-2.08	105.97	110.14
3	D	3	BMA	C1-C2-C3	2.07	112.21	109.67
2	C	6	MAN	O2-C2-C3	-2.07	105.99	110.14
4	E	5	MAN	C1-C2-C3	2.06	112.20	109.67
3	D	1	NAG	C4-C3-C2	2.06	114.03	111.02

There are no chirality outliers.

All (27) torsion outliers are listed below:

Mol	Chain	Res	Type	Atoms
3	D	3	BMA	C4-C5-C6-O6
3	D	3	BMA	O5-C5-C6-O6
3	D	4	MAN	O5-C5-C6-O6
4	E	4	MAN	O5-C5-C6-O6
4	E	2	NAG	O5-C5-C6-O6
4	E	1	NAG	C8-C7-N2-C2
4	E	1	NAG	O7-C7-N2-C2
4	E	2	NAG	C8-C7-N2-C2
4	E	2	NAG	O7-C7-N2-C2
5	F	1	NAG	C8-C7-N2-C2
5	F	1	NAG	O7-C7-N2-C2
3	D	1	NAG	O5-C5-C6-O6

*Continued on next page...*

*Continued from previous page...*

Mol	Chain	Res	Type	Atoms
4	E	4	MAN	C4-C5-C6-O6
3	D	4	MAN	C4-C5-C6-O6
4	E	2	NAG	C4-C5-C6-O6
3	D	1	NAG	C4-C5-C6-O6
4	E	3	BMA	C4-C5-C6-O6
5	F	3	BMA	C4-C5-C6-O6
3	D	1	NAG	C3-C2-N2-C7
5	F	1	NAG	C4-C5-C6-O6
4	E	3	BMA	O5-C5-C6-O6
2	C	6	MAN	O5-C5-C6-O6
2	C	1	NAG	C3-C2-N2-C7
5	F	3	BMA	O5-C5-C6-O6
5	F	1	NAG	O5-C5-C6-O6
5	F	1	NAG	C3-C2-N2-C7
5	F	1	NAG	C1-C2-N2-C7

All (1) ring outliers are listed below:

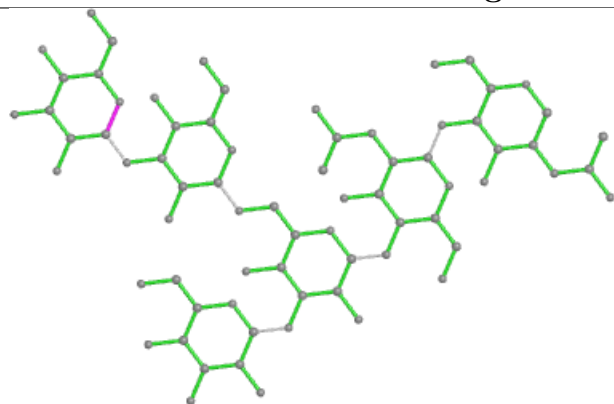
Mol	Chain	Res	Type	Atoms
4	E	5	MAN	C1-C2-C3-C4-C5-O5

4 monomers are involved in 10 short contacts:

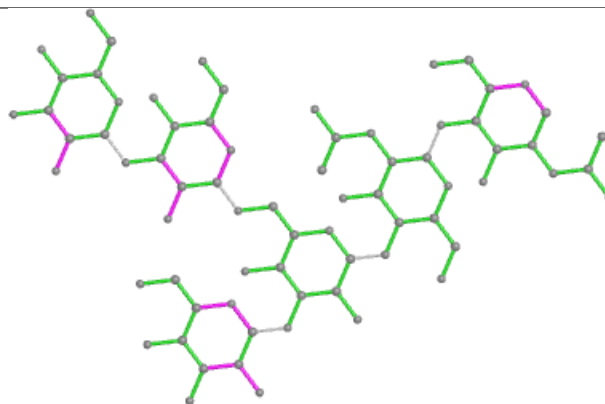
Mol	Chain	Res	Type	Clashes	Symm-Clashes
4	E	1	NAG	1	0
3	D	2	NAG	3	0
3	D	1	NAG	5	0
5	F	1	NAG	1	0

The following is a two-dimensional graphical depiction of Mogul quality analysis of bond lengths, bond angles, torsion angles, and ring geometry for oligosaccharide.

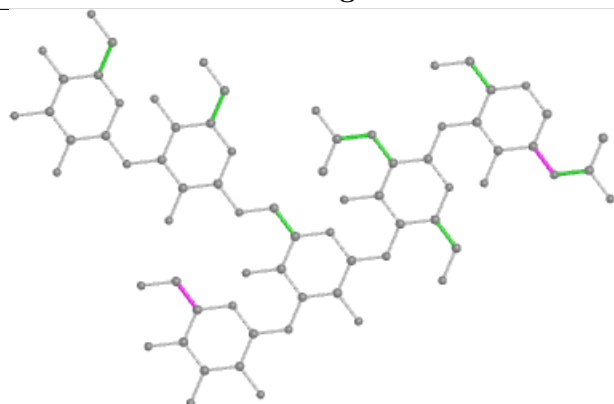
## Oligosaccharide Chain C



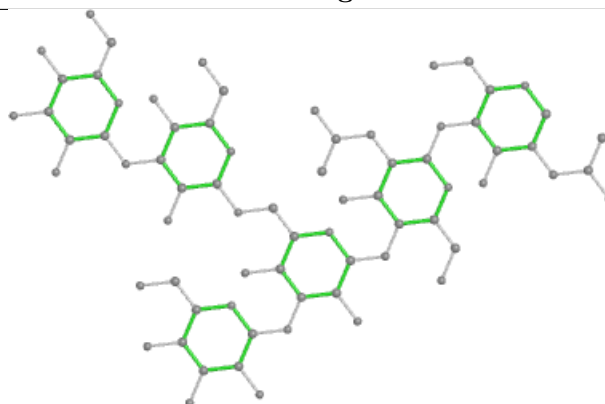
Bond lengths



Bond angles

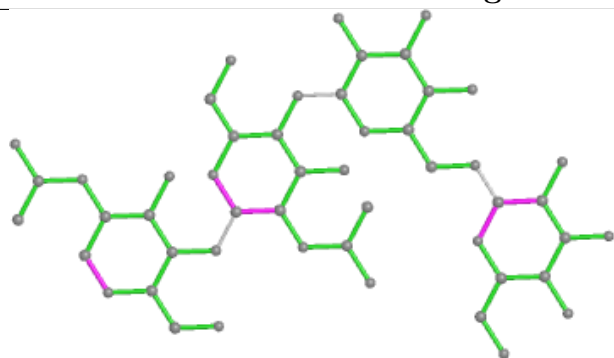


Torsions

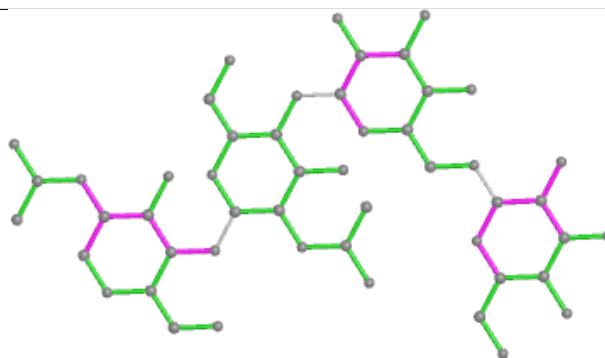


Rings

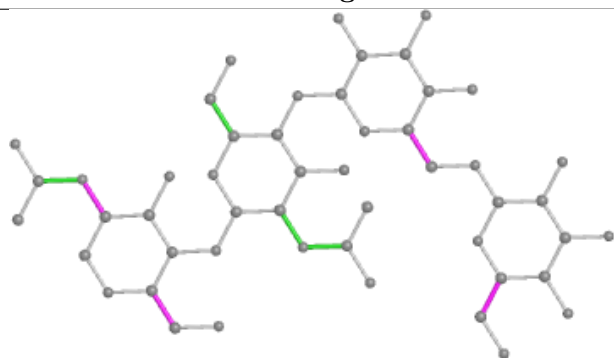
## Oligosaccharide Chain D



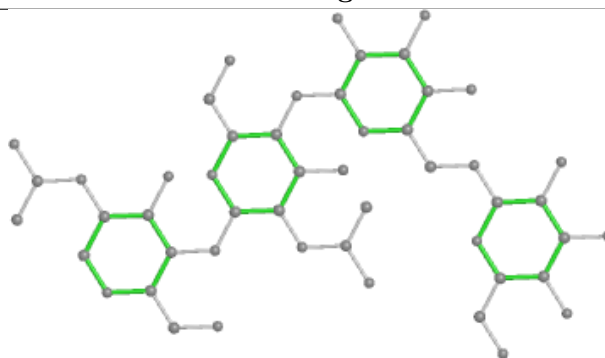
Bond lengths



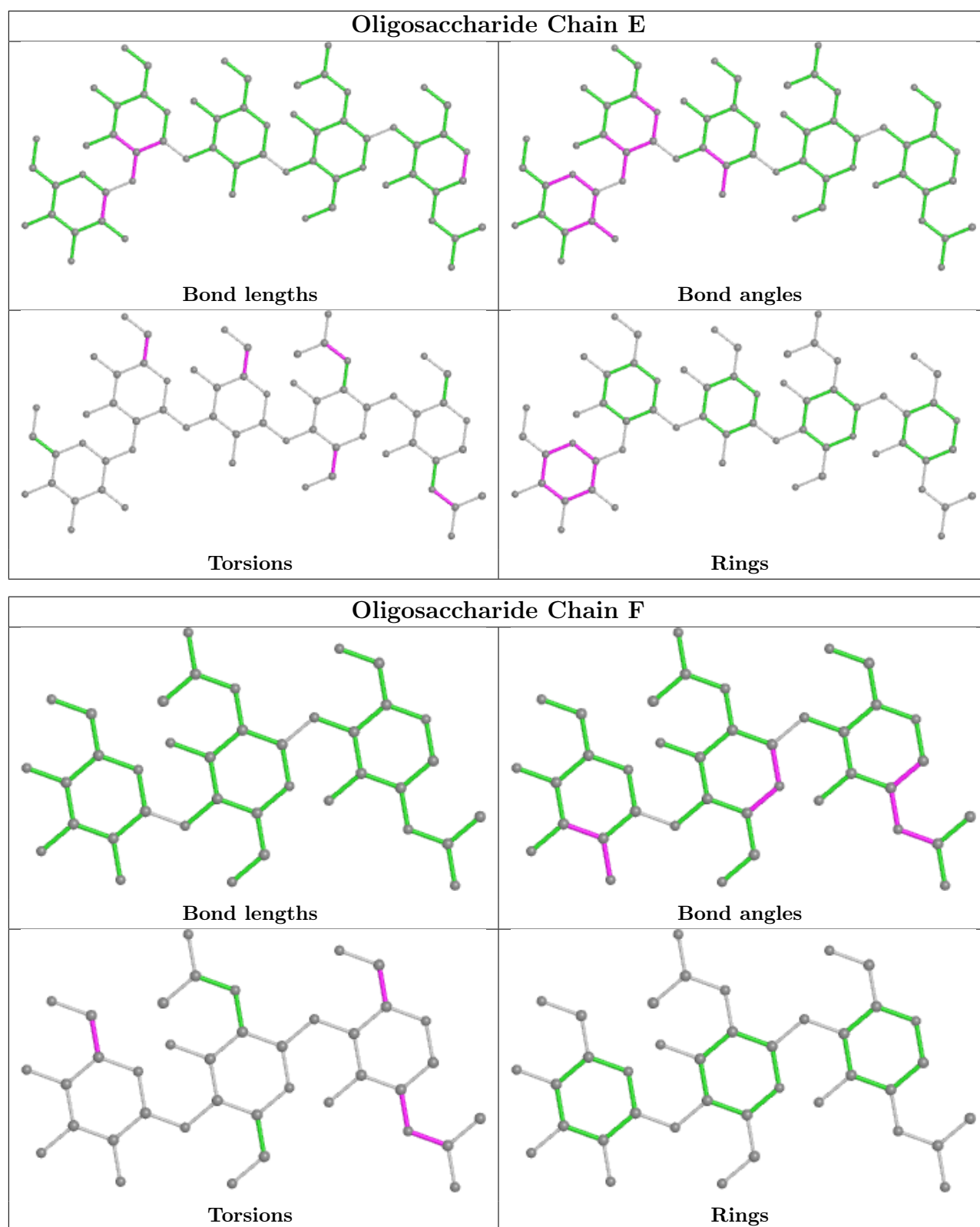
Bond angles



Torsions



Rings



## 5.6 Ligand geometry [i](#)

Of 4 ligands modelled in this entry, 4 are monoatomic - leaving 0 for Mogul analysis.

There are no bond length outliers.

There are no bond angle outliers.

There are no chirality outliers.

There are no torsion outliers.

There are no ring outliers.

No monomer is involved in short contacts.

## 5.7 Other polymers [i](#)

There are no such residues in this entry.

## 5.8 Polymer linkage issues [i](#)

There are no chain breaks in this entry.

## 6 Fit of model and data [i](#)

### 6.1 Protein, DNA and RNA chains [i](#)

In the following table, the column labelled ‘#RSRZ > 2’ contains the number (and percentage) of RSRZ outliers, followed by percent RSRZ outliers for the chain as percentile scores relative to all X-ray entries and entries of similar resolution. The OWAB column contains the minimum, median, 95<sup>th</sup> percentile and maximum values of the occupancy-weighted average B-factor per residue. The column labelled ‘Q < 0.9’ lists the number of (and percentage) of residues with an average occupancy less than 0.9.

Mol	Chain	Analysed	<RSRZ>	#RSRZ>2	OWAB(Å <sup>2</sup> )	Q<0.9
1	A	364/414 (87%)	-0.18	2 (0%) 91 75	40, 64, 104, 134	0
1	B	371/414 (89%)	-0.18	4 (1%) 80 56	34, 60, 95, 142	0
All	All	735/828 (88%)	-0.18	6 (0%) 86 65	34, 62, 99, 142	0

All (6) RSRZ outliers are listed below:

Mol	Chain	Res	Type	RSRZ
1	A	3136	ASP	4.6
1	B	3130	GLU	3.3
1	A	3299	LEU	3.2
1	B	3104	THR	2.2
1	B	3299	LEU	2.2
1	B	3253	SER	2.1

### 6.2 Non-standard residues in protein, DNA, RNA chains [i](#)

There are no non-standard protein/DNA/RNA residues in this entry.

### 6.3 Carbohydrates [i](#)

In the following table, the Atoms column lists the number of modelled atoms in the group and the number defined in the chemical component dictionary. The B-factors column lists the minimum, median, 95<sup>th</sup> percentile and maximum values of B factors of atoms in the group. The column labelled ‘Q < 0.9’ lists the number of atoms with occupancy less than 0.9.

Mol	Type	Chain	Res	Atoms	RSCC	RSR	B-factors(Å <sup>2</sup> )	Q<0.9
4	MAN	E	5	11/12	0.68	0.30	93,111,117,128	0
5	NAG	F	2	14/15	0.75	0.26	84,97,102,102	0
4	MAN	E	4	11/12	0.79	0.24	70,91,107,114	0

*Continued on next page...*

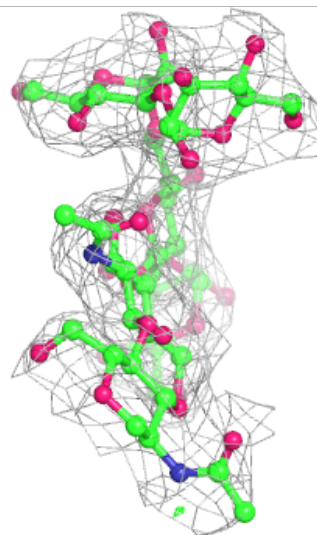
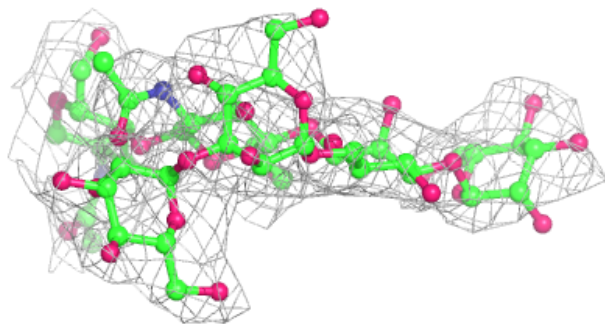
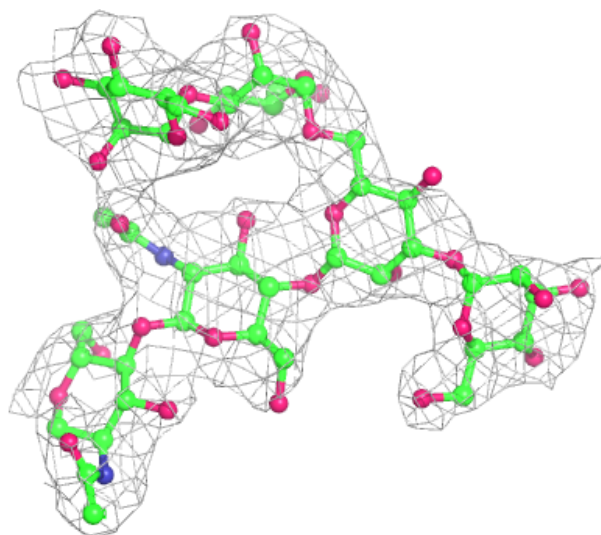
*Continued from previous page...*

Mol	Type	Chain	Res	Atoms	RSCC	RSR	B-factors( $\text{\AA}^2$ )	Q<0.9
3	MAN	D	4	11/12	0.81	0.22	74,79,87,93	0
5	BMA	F	3	11/12	0.82	0.21	80,93,95,98	0
3	BMA	D	3	11/12	0.83	0.22	72,79,90,94	0
4	BMA	E	3	11/12	0.84	0.19	71,76,87,91	0
5	NAG	F	1	14/15	0.84	0.29	75,86,91,97	0
2	NAG	C	1	14/15	0.86	0.17	61,68,73,74	0
3	NAG	D	2	14/15	0.86	0.25	54,60,73,73	0
3	NAG	D	1	14/15	0.90	0.30	55,65,91,92	0
2	MAN	C	6	11/12	0.90	0.25	67,74,80,81	0
2	BMA	C	3	11/12	0.92	0.19	72,75,77,84	0
4	NAG	E	2	14/15	0.92	0.15	42,48,55,56	0
2	MAN	C	5	11/12	0.93	0.13	55,66,75,76	0
2	MAN	C	4	11/12	0.94	0.15	70,76,85,93	0
2	NAG	C	2	14/15	0.94	0.13	65,71,78,80	0
4	NAG	E	1	14/15	0.95	0.18	43,48,52,54	0

The following is a graphical depiction of the model fit to experimental electron density for oligosaccharide. Each fit is shown from different orientation to approximate a three-dimensional view.

**Electron density around Chain C:**

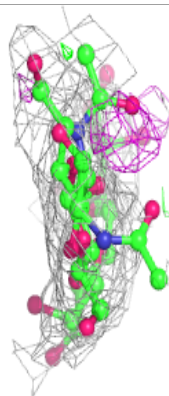
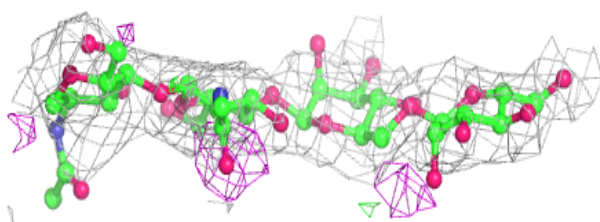
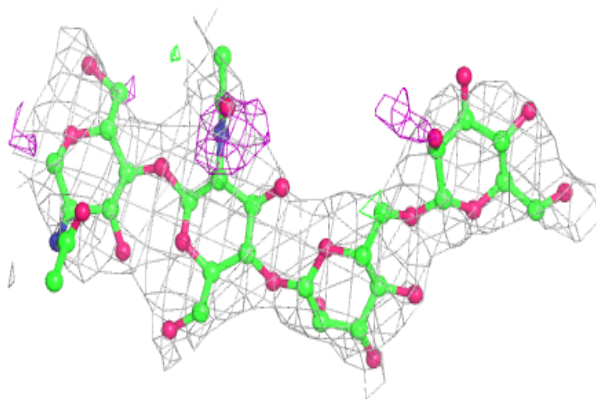
$2mF_o-DF_c$  (at 0.7 rmsd) in gray  
 $mF_o-DF_c$  (at 3 rmsd) in purple (negative)  
and green (positive)



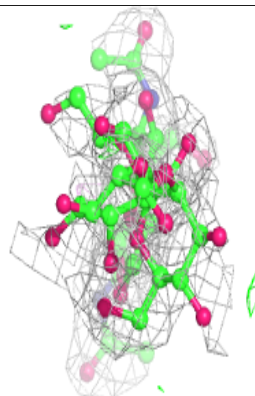
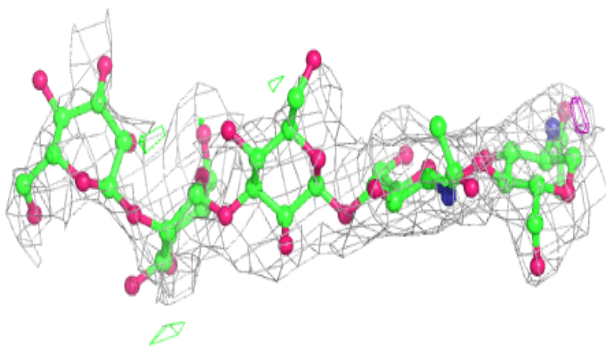
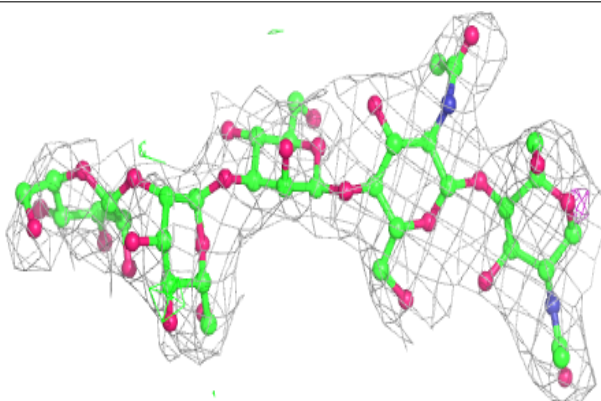


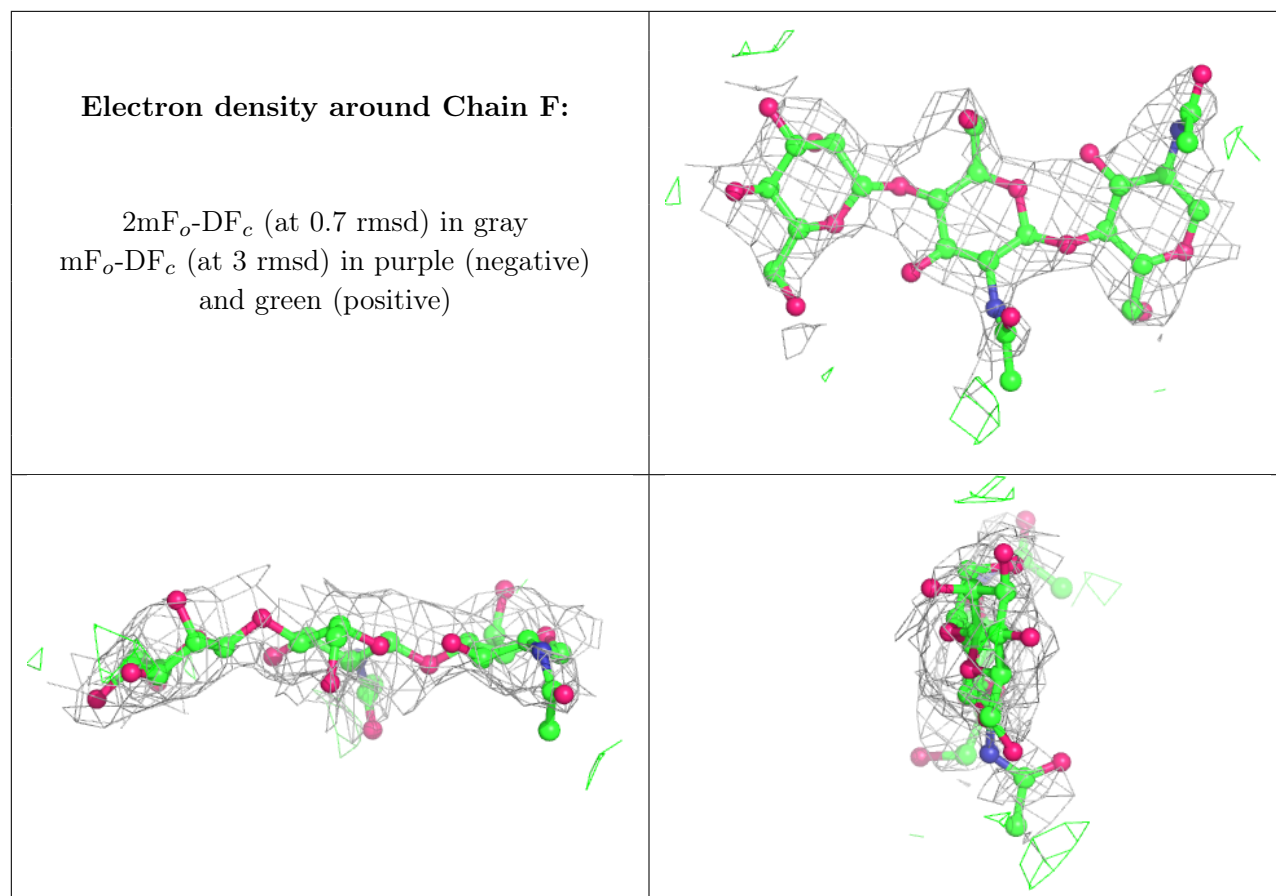
**Electron density around Chain D:**

$2mF_o-DF_c$  (at 0.7 rmsd) in gray  
 $mF_o-DF_c$  (at 3 rmsd) in purple (negative)  
and green (positive)

**Electron density around Chain E:**

$2mF_o-DF_c$  (at 0.7 rmsd) in gray  
 $mF_o-DF_c$  (at 3 rmsd) in purple (negative)  
and green (positive)





## 6.4 Ligands [i](#)

In the following table, the Atoms column lists the number of modelled atoms in the group and the number defined in the chemical component dictionary. The B-factors column lists the minimum, median, 95<sup>th</sup> percentile and maximum values of B factors of atoms in the group. The column labelled 'Q<0.9' lists the number of atoms with occupancy less than 0.9.

Mol	Type	Chain	Res	Atoms	RSCC	RSR	B-factors( $\text{\AA}^2$ )	Q<0.9
6	CA	A	3501	1/1	0.67	0.20	104,104,104,104	0
6	CA	B	3502	1/1	0.91	0.06	74,74,74,74	0
6	CA	A	3502	1/1	0.94	0.12	78,78,78,78	0
6	CA	B	3501	1/1	0.97	0.09	68,68,68,68	0

## 6.5 Other polymers [i](#)

There are no such residues in this entry.