



Full wwPDB X-ray Structure Validation Report ⓘ

Aug 7, 2020 – 05:14 PM BST

PDB ID : 4M0F
Title : Structure of human acetylcholinesterase in complex with territrem B
Authors : Cheung, J.; Gary, E.N.; Shiomi, K.; Rosenberry, T.L.
Deposited on : 2013-08-01
Resolution : 2.30 Å(reported)

This is a Full wwPDB X-ray Structure Validation Report for a publicly released PDB entry.

We welcome your comments at validation@mail.wwpdb.org

A user guide is available at

<https://www.wwpdb.org/validation/2017/XrayValidationReportHelp>

with specific help available everywhere you see the ⓘ symbol.

The following versions of software and data (see [references ⓘ](#)) were used in the production of this report:

MolProbity : 4.02b-467
Mogul : 1.8.5 (274361), CSD as541be (2020)
Xtriage (Phenix) : 1.13
EDS : 2.13.1
buster-report : 1.1.7 (2018)
Percentile statistics : 20191225.v01 (using entries in the PDB archive December 25th 2019)
Refmac : 5.8.0158
CCP4 : 7.0.044 (Gargrove)
Ideal geometry (proteins) : Engh & Huber (2001)
Ideal geometry (DNA, RNA) : Parkinson et al. (1996)
Validation Pipeline (wwPDB-VP) : 2.13.1

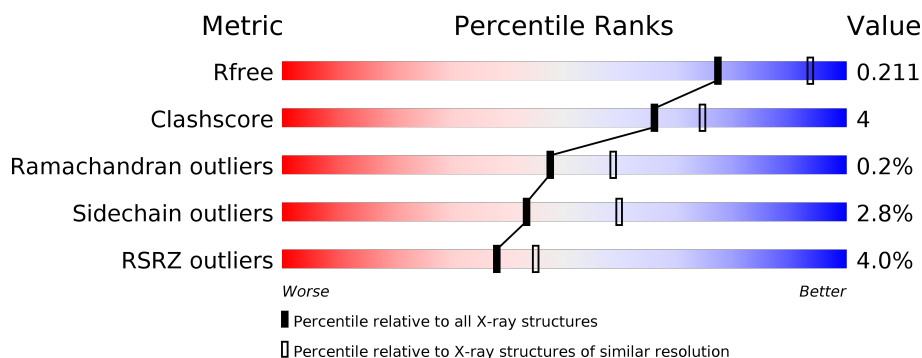
1 Overall quality at a glance

The following experimental techniques were used to determine the structure:

X-RAY DIFFRACTION

The reported resolution of this entry is 2.30 Å.

Percentile scores (ranging between 0-100) for global validation metrics of the entry are shown in the following graphic. The table shows the number of entries on which the scores are based.



Metric	Whole archive (#Entries)	Similar resolution (#Entries, resolution range(Å))
R_{free}	130704	5042 (2.30-2.30)
Clashscore	141614	5643 (2.30-2.30)
Ramachandran outliers	138981	5575 (2.30-2.30)
Sidechain outliers	138945	5575 (2.30-2.30)
RSRZ outliers	127900	4938 (2.30-2.30)

The table below summarises the geometric issues observed across the polymeric chains and their fit to the electron density. The red, orange, yellow and green segments on the lower bar indicate the fraction of residues that contain outliers for ≥ 3 , 2, 1 and 0 types of geometric quality criteria respectively. A grey segment represents the fraction of residues that are not modelled. The numeric value for each fraction is indicated below the corresponding segment, with a dot representing fractions $\leq 5\%$. The upper red bar (where present) indicates the fraction of residues that have poor fit to the electron density. The numeric value is given above the bar.

Mol	Chain	Length	Quality of chain
1	A	542	<div> <div>4%</div> <div> <div></div> <div>88%</div> <div>9%</div> <div>••</div> </div> </div>
1	B	542	<div> <div>4%</div> <div> <div></div> <div>87%</div> <div>11%</div> <div>••</div> </div> </div>
2	C	3	<div> <div>67%</div> <div>33%</div> </div>
2	D	3	<div> <div>33%</div> <div>67%</div> </div>

2 Entry composition [i](#)

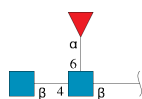
There are 7 unique types of molecules in this entry. The entry contains 8936 atoms, of which 0 are hydrogens and 0 are deuteriums.

In the tables below, the ZeroOcc column contains the number of atoms modelled with zero occupancy, the AltConf column contains the number of residues with at least one atom in alternate conformation and the Trace column contains the number of residues modelled with at most 2 atoms.

- Molecule 1 is a protein called Acetylcholinesterase.

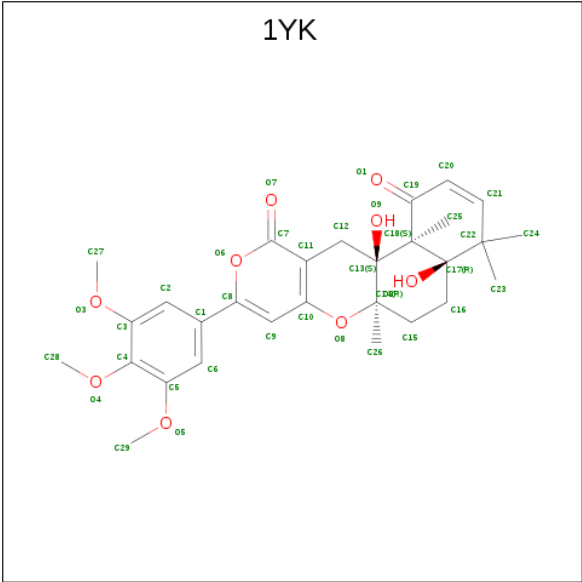
Mol	Chain	Residues	Atoms					ZeroOcc	AltConf	Trace
1	A	530	Total	C	N	O	S	0	7	0
			4199	2690	740	756	13			
1	B	535	Total	C	N	O	S	0	2	0
			4173	2679	729	752	13			

- Molecule 2 is an oligosaccharide called 2-acetamido-2-deoxy-beta-D-glucopyranose-(1-4)-[alpha-L-fucopyranose-(1-6)]2-acetamido-2-deoxy-beta-D-glucopyranose.



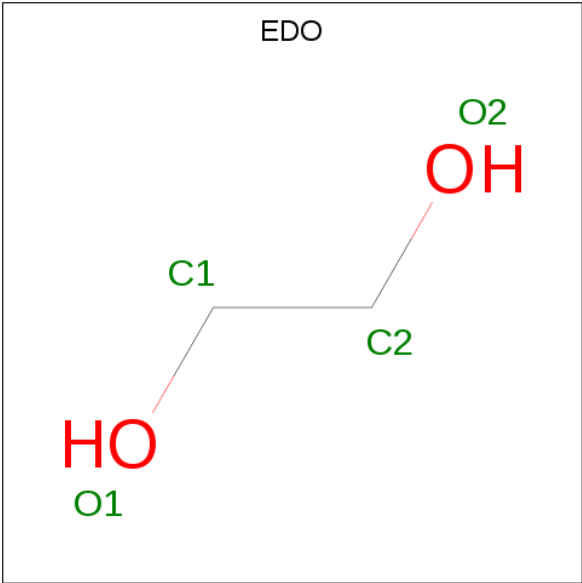
Mol	Chain	Residues	Atoms				ZeroOcc	AltConf	Trace
2	C	3	Total	C	N	O	0	0	0
			38	22	2	14			
2	D	3	Total	C	N	O	0	0	0
			38	22	2	14			

- Molecule 3 is territrem B (three-letter code: 1YK) (formula: C₂₉H₃₄O₉).



Mol	Chain	Residues	Atoms			ZeroOcc	AltConf
3	A	1	Total	C	O	0	0
			38	29	9		
3	B	1	Total	C	O	0	0
			38	29	9		

- Molecule 4 is 1,2-ETHANEDIOL (three-letter code: EDO) (formula: C₂H₆O₂).



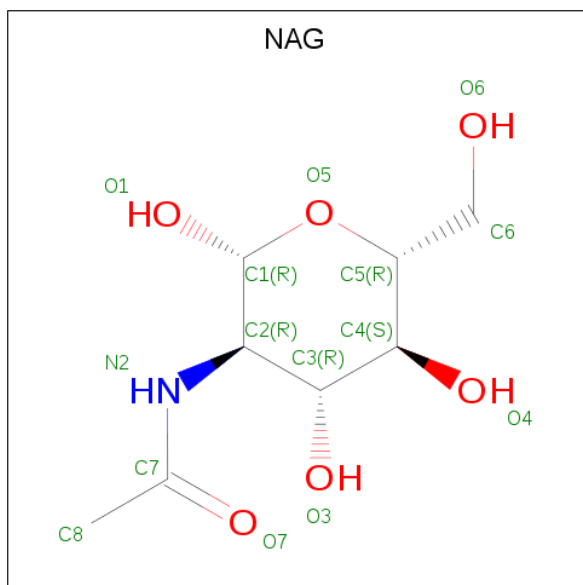
Mol	Chain	Residues	Atoms			ZeroOcc	AltConf
4	A	1	Total	C	O	0	0
			4	2	2		
4	A	1	Total	C	O	0	0
			4	2	2		

Continued on next page...

Continued from previous page...

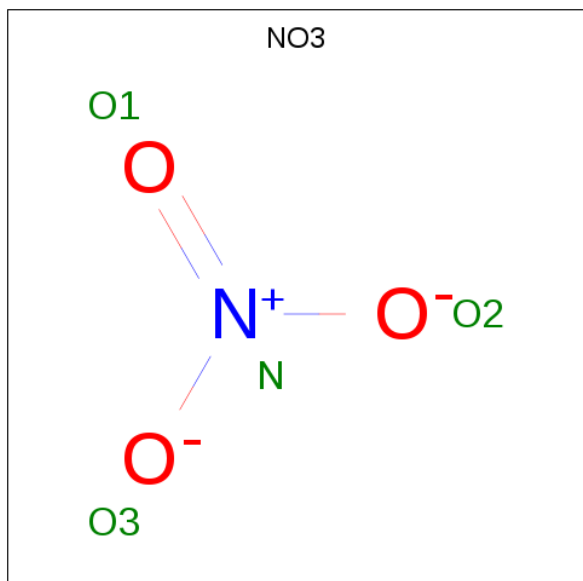
Mol	Chain	Residues	Atoms			ZeroOcc	AltConf
			Total	C	O		
4	B	1	4	2	2	0	0

- Molecule 5 is 2-acetamido-2-deoxy-beta-D-glucopyranose (three-letter code: NAG) (formula: $C_8H_{15}NO_6$).



Mol	Chain	Residues	Atoms				ZeroOcc	AltConf
			Total	C	N	O		
5	B	1	14	8	1	5	0	0

- Molecule 6 is NITRATE ION (three-letter code: NO3) (formula: NO_3).



Mol	Chain	Residues	Atoms			ZeroOcc	AltConf
6	B	1	Total 4	N 1	O 3	0	0
6	B	1	Total 4	N 1	O 3	0	0

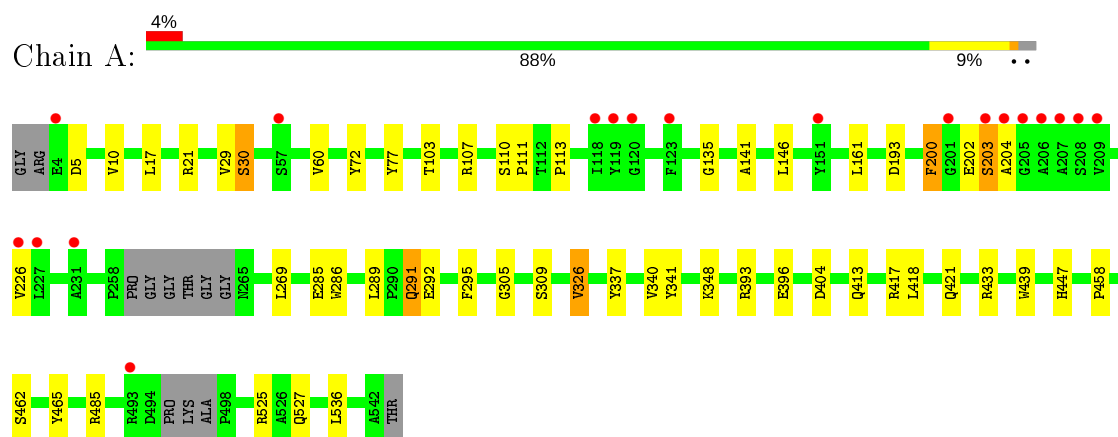
- Molecule 7 is water.

Mol	Chain	Residues	Atoms		ZeroOcc	AltConf
7	A	204	Total 204	O 204	0	0
7	B	174	Total 174	O 174	0	0

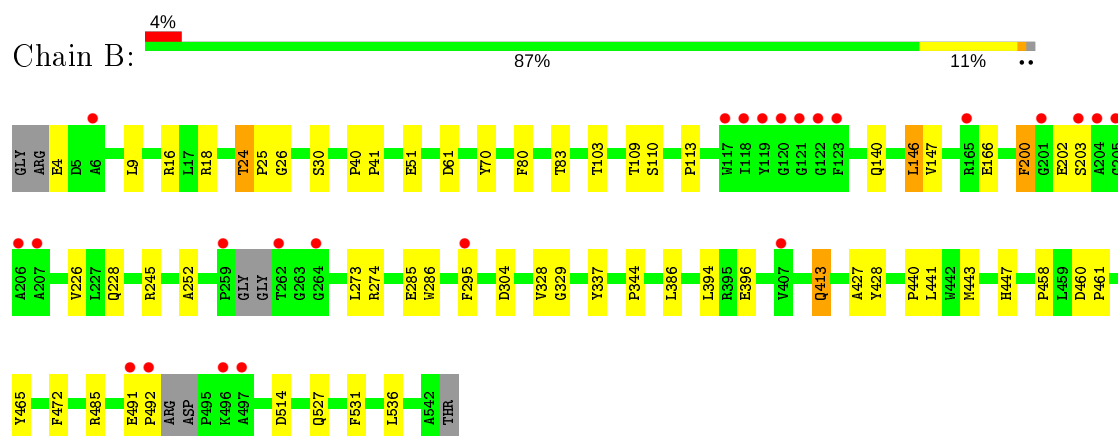
3 Residue-property plots

These plots are drawn for all protein, RNA, DNA and oligosaccharide chains in the entry. The first graphic for a chain summarises the proportions of the various outlier classes displayed in the second graphic. The second graphic shows the sequence view annotated by issues in geometry and electron density. Residues are color-coded according to the number of geometric quality criteria for which they contain at least one outlier: green = 0, yellow = 1, orange = 2 and red = 3 or more. A red dot above a residue indicates a poor fit to the electron density ($RSRZ > 2$). Stretches of 2 or more consecutive residues without any outlier are shown as a green connector. Residues present in the sample, but not in the model, are shown in grey.

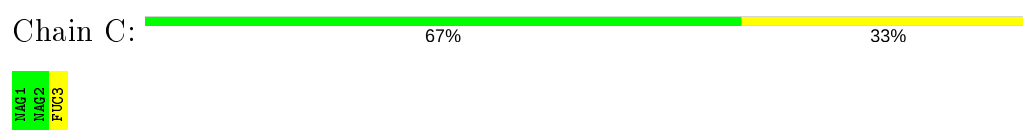
• Molecule 1: Acetylcholinesterase



• Molecule 1: Acetylcholinesterase



• Molecule 2: 2-acetamido-2-deoxy-beta-D-glucopyranose-(1-4)-[alpha-L-fucopyranose-(1-6)]2-acetamido-2-deoxy-beta-D-glucopyranose



• Molecule 2: 2-acetamido-2-deoxy-beta-D-glucopyranose-(1-4)-[alpha-L-fucopyranose-(1-6)]2-acetamido-2-deoxy-beta-D-glucopyranose

Chain D:

33%

67%



4 Data and refinement statistics

Property	Value	Source
Space group	P 31 2 1	Depositor
Cell constants a, b, c, α , β , γ	105.14Å 105.14Å 322.28Å 90.00° 90.00° 120.00°	Depositor
Resolution (Å)	41.09 – 2.30 41.09 – 2.30	Depositor EDS
% Data completeness (in resolution range)	99.2 (41.09-2.30) 99.1 (41.09-2.30)	Depositor EDS
R_{merge}	0.08	Depositor
R_{sym}	(Not available)	Depositor
$\langle I/\sigma(I) \rangle$ ¹	1.90 (at 2.32Å)	Xtriage
Refinement program	PHENIX 1.8.2 _1309	Depositor
R, R_{free}	0.175 , 0.211 0.175 , 0.211	Depositor DCC
R_{free} test set	4622 reflections (5.04%)	wwPDB-VP
Wilson B-factor (Å ²)	45.7	Xtriage
Anisotropy	0.504	Xtriage
Bulk solvent k_{sol} (e/Å ³), B_{sol} (Å ²)	0.32 , 33.7	EDS
L-test for twinning ²	$\langle L \rangle = 0.49$, $\langle L^2 \rangle = 0.32$	Xtriage
Estimated twinning fraction	0.024 for -h,-k,l	Xtriage
F_o, F_c correlation	0.96	EDS
Total number of atoms	8936	wwPDB-VP
Average B, all atoms (Å ²)	46.0	wwPDB-VP

Xtriage's analysis on translational NCS is as follows: *The largest off-origin peak in the Patterson function is 2.39% of the height of the origin peak. No significant pseudotranslation is detected.*

¹Intensities estimated from amplitudes.

²Theoretical values of $\langle |L| \rangle$, $\langle L^2 \rangle$ for acentric reflections are 0.5, 0.333 respectively for untwinned datasets, and 0.375, 0.2 for perfectly twinned datasets.

5 Model quality

5.1 Standard geometry

Bond lengths and bond angles in the following residue types are not validated in this section: FUC, NO3, NAG, 1YK, EDO

The Z score for a bond length (or angle) is the number of standard deviations the observed value is removed from the expected value. A bond length (or angle) with $|Z| > 5$ is considered an outlier worth inspection. RMSZ is the root-mean-square of all Z scores of the bond lengths (or angles).

Mol	Chain	Bond lengths		Bond angles	
		RMSZ	# Z >5	RMSZ	# Z >5
1	A	0.51	0/4326	0.64	0/5909
1	B	0.52	0/4301	0.64	0/5878
All	All	0.52	0/8627	0.64	0/11787

There are no bond length outliers.

There are no bond angle outliers.

There are no chirality outliers.

There are no planarity outliers.

5.2 Too-close contacts

In the following table, the Non-H and H(model) columns list the number of non-hydrogen atoms and hydrogen atoms in the chain respectively. The H(added) column lists the number of hydrogen atoms added and optimized by MolProbity. The Clashes column lists the number of clashes within the asymmetric unit, whereas Symm-Clashes lists symmetry related clashes.

Mol	Chain	Non-H	H(model)	H(added)	Clashes	Symm-Clashes
1	A	4199	0	4064	29	0
1	B	4173	0	4048	35	0
2	C	38	0	34	0	0
2	D	38	0	34	1	0
3	A	38	0	34	3	0
3	B	38	0	34	3	0
4	A	8	0	12	1	0
4	B	4	0	6	2	0
5	B	14	0	13	0	0
6	B	8	0	0	1	0
7	A	204	0	0	2	0

Continued on next page...

Continued from previous page...

Mol	Chain	Non-H	H(model)	H(added)	Clashes	Symm-Clashes
7	B	174	0	0	4	0
All	All	8936	0	8279	68	0

The all-atom clashscore is defined as the number of clashes found per 1000 atoms (including hydrogen atoms). The all-atom clashscore for this structure is 4.

All (68) close contacts within the same asymmetric unit are listed below, sorted by their clash magnitude.

Atom-1	Atom-2	Interatomic distance (Å)	Clash overlap (Å)
1:A:527:GLN:NE2	7:A:868:HOH:O	2.17	0.76
1:B:527:GLN:NE2	7:B:835:HOH:O	2.18	0.75
1:A:286:TRP:HB3	3:A:604:1YK:H18	1.69	0.74
1:B:24:THR:OG1	1:B:140:GLN:HG3	1.94	0.68
1:B:113:PRO:HG3	1:B:485:ARG:HG2	1.76	0.68
1:A:203:SER:OG	1:A:204:ALA:N	2.27	0.67
1:B:304:ASP:OD1	7:B:765:HOH:O	2.15	0.64
1:A:141:ALA:HB2	7:A:880:HOH:O	2.02	0.60
1:B:30:SER:HB2	1:B:103:THR:HG22	1.84	0.59
1:A:161:LEU:HD11	1:A:269:LEU:HD22	1.86	0.58
3:B:605:1YK:H32	3:B:605:1YK:H3	1.87	0.57
1:B:245:ARG:NE	6:B:607:NO3:O3	2.27	0.56
1:A:433:ARG:NH2	1:A:439:TRP:O	2.37	0.54
1:A:30:SER:HB2	1:A:103:THR:HG22	1.92	0.52
1:B:531:PHE:CZ	1:B:536:LEU:HD13	2.45	0.52
1:B:413:GLN:NE2	7:B:847:HOH:O	2.43	0.51
1:A:113:PRO:HG3	1:A:485:ARG:HG2	1.93	0.51
3:A:604:1YK:H3	3:A:604:1YK:H32	1.92	0.51
1:A:200:PHE:CB	1:A:226:VAL:HB	2.41	0.50
1:B:286:TRP:HB3	3:B:605:1YK:H18	1.93	0.50
1:A:111:PRO:HB3	1:A:193:ASP:HB2	1.92	0.50
1:A:135:GLY:HA3	1:A:146:LEU:HD23	1.93	0.50
1:B:394:LEU:HD23	4:B:606:EDO:H12	1.94	0.50
1:B:440:PRO:HD2	1:B:443:MET:HE3	1.94	0.49
1:B:200:PHE:CB	1:B:226:VAL:HB	2.41	0.49
1:A:203:SER:HB2	1:A:447:HIS:NE2	2.27	0.49
1:A:10:VAL:HG22	1:A:107:ARG:NH2	2.28	0.49
1:A:393:ARG:HB3	4:A:605:EDO:H12	1.94	0.49
1:A:417:ARG:NH1	1:A:421:GLN:OE1	2.44	0.48
3:A:604:1YK:H29	3:A:604:1YK:H33	1.95	0.48
1:B:328:VAL:O	1:B:427:ALA:HA	2.13	0.48
1:A:17:LEU:HD23	1:A:60:VAL:HB	1.96	0.47

Continued on next page...

Continued from previous page...

Atom-1	Atom-2	Interatomic distance (Å)	Clash overlap (Å)
1:A:291:GLN:HG3	1:A:292:GLU:O	2.15	0.47
1:A:305:GLY:HA2	1:A:309:SER:HA	1.97	0.47
1:B:166:GLU:OE1	1:B:274:ARG:NH2	2.43	0.46
1:A:458:PRO:HA	1:A:465:TYR:CD1	2.51	0.45
1:B:16:ARG:HD2	7:B:873:HOH:O	2.16	0.45
1:B:344:PRO:HA	2:D:2:NAG:H81	1.99	0.45
1:B:252:ALA:HA	1:B:273:LEU:HD21	1.99	0.45
1:B:458:PRO:HA	1:B:465:TYR:CD1	2.52	0.45
1:B:472:PHE:CZ	1:B:514:ASP:HA	2.53	0.44
1:B:202:GLU:HA	1:B:228:GLN:O	2.18	0.44
1:A:404:ASP:OD2	1:A:525[B]:ARG:NH2	2.51	0.44
1:B:4:GLU:CG	1:B:9:LEU:HD11	2.48	0.44
1:B:203:SER:HB3	1:B:447:HIS:NE2	2.34	0.43
1:B:40:PRO:HA	1:B:41:PRO:HD3	1.92	0.43
1:A:202:GLU:OE1	1:A:203:SER:HB3	2.19	0.43
1:B:18:ARG:HD2	1:B:61:ASP:OD1	2.19	0.43
1:B:491:GLU:HA	1:B:492:PRO:HD3	1.82	0.43
1:A:536:LEU:HD12	1:A:536:LEU:HA	1.80	0.42
1:B:329:GLY:HA3	1:B:428:TYR:CE2	2.54	0.42
3:B:605:1YK:H29	3:B:605:1YK:H33	2.01	0.42
1:A:72:TYR:HB2	1:A:285:GLU:HG3	2.02	0.42
1:B:394:LEU:CD2	4:B:606:EDO:H12	2.50	0.42
1:A:326:VAL:HG21	1:A:418:LEU:HD12	2.03	0.41
1:B:460:ASP:HA	1:B:461:PRO:HD3	1.83	0.41
1:B:329:GLY:HA3	1:B:428:TYR:CZ	2.56	0.41
1:B:146:LEU:HD12	1:B:147:VAL:N	2.35	0.41
1:B:200:PHE:HB2	1:B:226:VAL:HB	2.02	0.41
1:A:289:LEU:HD23	1:A:289:LEU:HA	1.97	0.41
1:B:24:THR:O	1:B:26:GLY:N	2.54	0.41
1:A:5:ASP:OD1	1:A:21:ARG:NH1	2.53	0.41
1:A:340:VAL:HG23	1:A:341:TYR:CD2	2.56	0.41
1:B:536:LEU:HA	1:B:536:LEU:HD12	1.88	0.41
1:A:200:PHE:HB3	1:A:226:VAL:HB	2.04	0.40
1:A:77:TYR:CD2	1:A:348:LYS:HD3	2.56	0.40
1:B:386:LEU:HA	1:B:386:LEU:HD23	1.83	0.40
1:B:80:PHE:HD2	1:B:83:THR:HG23	1.87	0.40

There are no symmetry-related clashes.

5.3 Torsion angles ⓘ

5.3.1 Protein backbone ⓘ

In the following table, the Percentiles column shows the percent Ramachandran outliers of the chain as a percentile score with respect to all X-ray entries followed by that with respect to entries of similar resolution.

The Analysed column shows the number of residues for which the backbone conformation was analysed, and the total number of residues.

Mol	Chain	Analysed	Favoured	Allowed	Outliers	Percentiles	
1	A	531/542 (98%)	513 (97%)	17 (3%)	1 (0%)	47	58
1	B	531/542 (98%)	516 (97%)	14 (3%)	1 (0%)	47	58
All	All	1062/1084 (98%)	1029 (97%)	31 (3%)	2 (0%)	47	58

All (2) Ramachandran outliers are listed below:

Mol	Chain	Res	Type
1	A	462	SER
1	B	25	PRO

5.3.2 Protein sidechains ⓘ

In the following table, the Percentiles column shows the percent sidechain outliers of the chain as a percentile score with respect to all X-ray entries followed by that with respect to entries of similar resolution.

The Analysed column shows the number of residues for which the sidechain conformation was analysed, and the total number of residues.

Mol	Chain	Analysed	Rotameric	Outliers	Percentiles	
1	A	438/437 (100%)	427 (98%)	11 (2%)	47	65
1	B	435/437 (100%)	422 (97%)	13 (3%)	41	57
All	All	873/874 (100%)	849 (97%)	24 (3%)	43	61

All (24) residues with a non-rotameric sidechain are listed below:

Mol	Chain	Res	Type
1	A	29	VAL
1	A	30	SER
1	A	110	SER
1	A	200	PHE

Continued on next page...

Continued from previous page...

Mol	Chain	Res	Type
1	A	203	SER
1	A	291	GLN
1	A	295	PHE
1	A	326	VAL
1	A	337	TYR
1	A	396	GLU
1	A	413	GLN
1	B	24	THR
1	B	51	GLU
1	B	70	TYR
1	B	109	THR
1	B	110	SER
1	B	146	LEU
1	B	200	PHE
1	B	285	GLU
1	B	295	PHE
1	B	337	TYR
1	B	396	GLU
1	B	413	GLN
1	B	441	LEU

Some sidechains can be flipped to improve hydrogen bonding and reduce clashes. There are no such sidechains identified.

5.3.3 RNA ⓘ

There are no RNA molecules in this entry.

5.4 Non-standard residues in protein, DNA, RNA chains ⓘ

There are no non-standard protein/DNA/RNA residues in this entry.

5.5 Carbohydrates ⓘ

6 monosaccharides are modelled in this entry.

In the following table, the Counts columns list the number of bonds (or angles) for which Mogul statistics could be retrieved, the number of bonds (or angles) that are observed in the model and the number of bonds (or angles) that are defined in the Chemical Component Dictionary. The Link column lists molecule types, if any, to which the group is linked. The Z score for a bond length (or angle) is the number of standard deviations the observed value is removed from the

expected value. A bond length (or angle) with $|Z| > 2$ is considered an outlier worth inspection. RMSZ is the root-mean-square of all Z scores of the bond lengths (or angles).

Mol	Type	Chain	Res	Link	Bond lengths			Bond angles		
					Counts	RMSZ	$\# Z > 2$	Counts	RMSZ	$\# Z > 2$
2	NAG	C	1	1,2	14,14,15	0.57	0	17,19,21	0.50	0
2	NAG	C	2	2	14,14,15	0.34	0	17,19,21	0.40	0
2	FUC	C	3	2	10,10,11	1.33	2 (20%)	14,14,16	1.12	1 (7%)
2	NAG	D	1	1,2	14,14,15	0.47	0	17,19,21	0.70	0
2	NAG	D	2	2	14,14,15	0.47	0	17,19,21	0.47	0
2	FUC	D	3	2	10,10,11	1.36	2 (20%)	14,14,16	0.97	0

In the following table, the Chirals column lists the number of chiral outliers, the number of chiral centers analysed, the number of these observed in the model and the number defined in the Chemical Component Dictionary. Similar counts are reported in the Torsion and Rings columns. '-' means no outliers of that kind were identified.

Mol	Type	Chain	Res	Link	Chirals	Torsions	Rings
2	NAG	C	1	1,2	-	2/6/23/26	0/1/1/1
2	NAG	C	2	2	-	0/6/23/26	0/1/1/1
2	FUC	C	3	2	-	-	0/1/1/1
2	NAG	D	1	1,2	-	2/6/23/26	0/1/1/1
2	NAG	D	2	2	-	4/6/23/26	0/1/1/1
2	FUC	D	3	2	-	-	0/1/1/1

All (4) bond length outliers are listed below:

Mol	Chain	Res	Type	Atoms	Z	Observed(Å)	Ideal(Å)
2	C	3	FUC	C2-C3	2.65	1.56	1.52
2	D	3	FUC	C2-C3	2.52	1.56	1.52
2	D	3	FUC	C4-C5	2.16	1.57	1.52
2	C	3	FUC	C1-C2	2.12	1.57	1.52

All (1) bond angle outliers are listed below:

Mol	Chain	Res	Type	Atoms	Z	Observed(°)	Ideal(°)
2	C	3	FUC	O5-C1-C2	2.34	114.39	110.77

There are no chirality outliers.

All (8) torsion outliers are listed below:

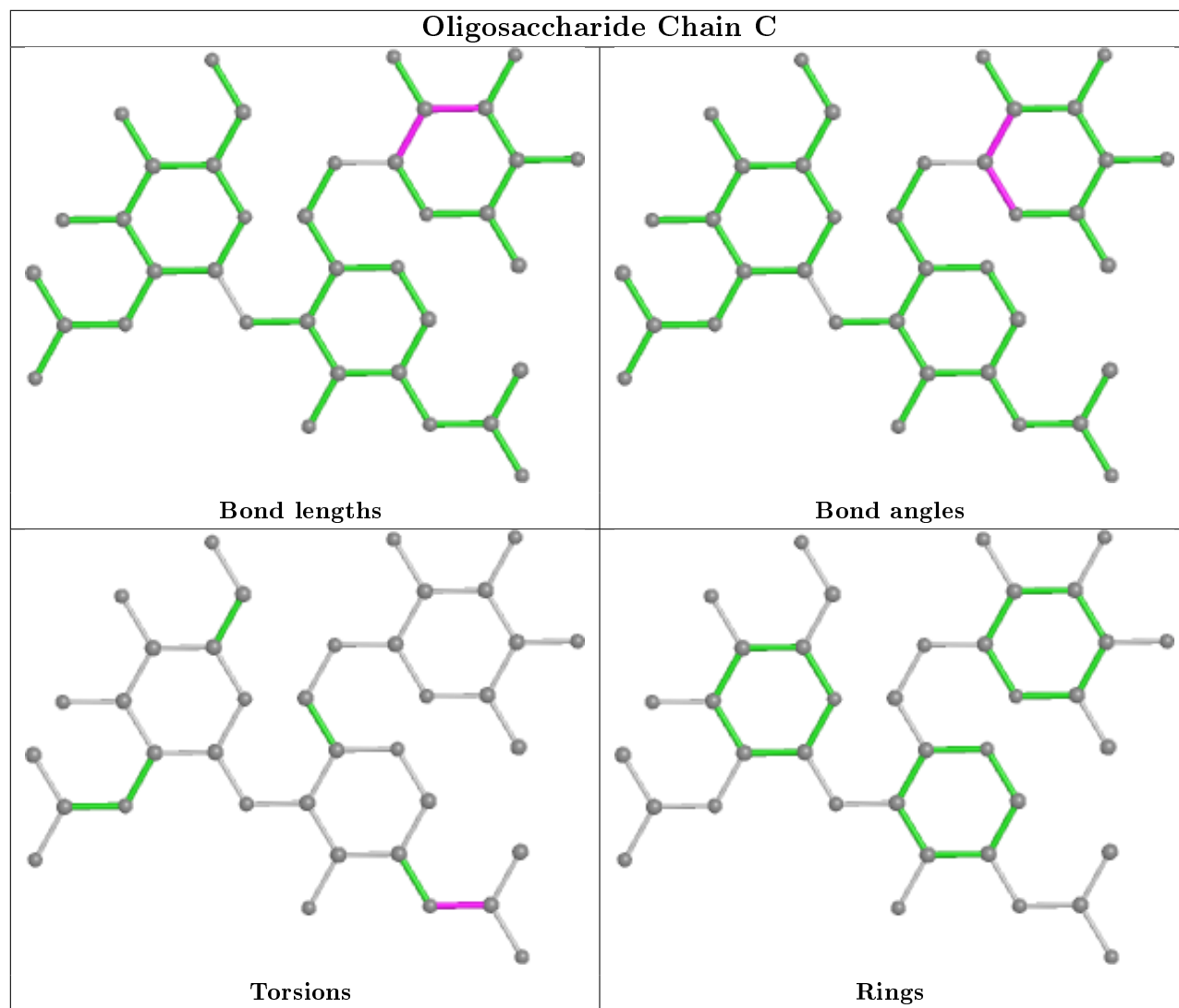
Mol	Chain	Res	Type	Atoms
2	D	2	NAG	C8-C7-N2-C2
2	D	2	NAG	O7-C7-N2-C2
2	C	1	NAG	C8-C7-N2-C2
2	C	1	NAG	O7-C7-N2-C2
2	D	1	NAG	C8-C7-N2-C2
2	D	1	NAG	O7-C7-N2-C2
2	D	2	NAG	O5-C5-C6-O6
2	D	2	NAG	C4-C5-C6-O6

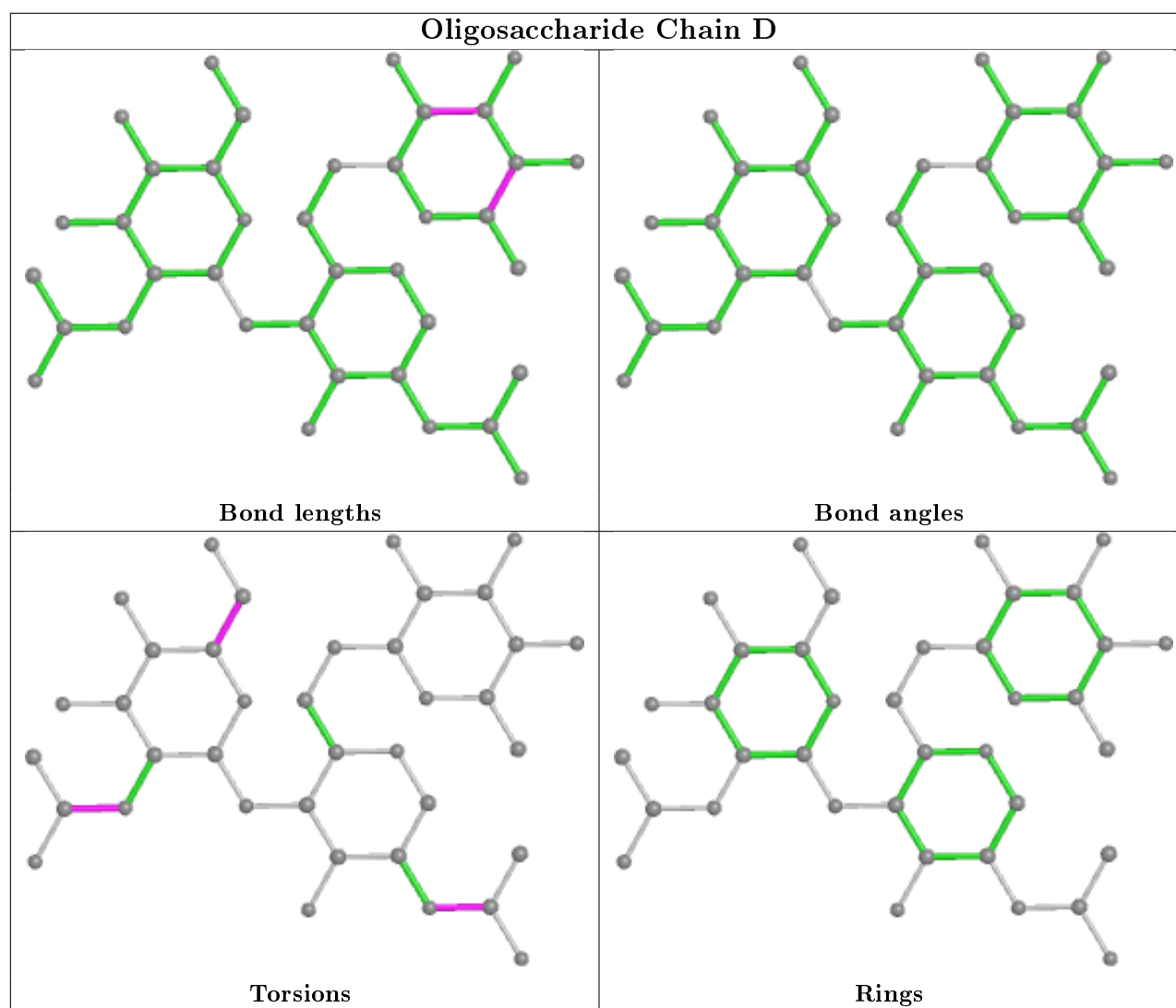
There are no ring outliers.

1 monomer is involved in 1 short contact:

Mol	Chain	Res	Type	Clashes	Symm-Clashes
2	D	2	NAG	1	0

The following is a two-dimensional graphical depiction of Mogul quality analysis of bond lengths, bond angles, torsion angles, and ring geometry for oligosaccharide.





5.6 Ligand geometry [i](#)

8 ligands are modelled in this entry.

In the following table, the Counts columns list the number of bonds (or angles) for which Mogul statistics could be retrieved, the number of bonds (or angles) that are observed in the model and the number of bonds (or angles) that are defined in the Chemical Component Dictionary. The Link column lists molecule types, if any, to which the group is linked. The Z score for a bond length (or angle) is the number of standard deviations the observed value is removed from the expected value. A bond length (or angle) with $|Z| > 2$ is considered an outlier worth inspection. RMSZ is the root-mean-square of all Z scores of the bond lengths (or angles).

Mol	Type	Chain	Res	Link	Bond lengths			Bond angles		
					Counts	RMSZ	$\# Z > 2$	Counts	RMSZ	$\# Z > 2$
3	1YK	B	605	-	36,42,42	2.39	12 (33%)	40,70,70	2.13	10 (25%)
5	NAG	B	604	1	14,14,15	0.96	1 (7%)	17,19,21	1.02	1 (5%)

Mol	Type	Chain	Res	Link	Bond lengths			Bond angles		
					Counts	RMSZ	# Z > 2	Counts	RMSZ	# Z > 2
6	NO3	B	608	-	1,3,3	3.80	1 (100%)	0,3,3	0.00	-
4	EDO	B	606	-	3,3,3	0.45	0	2,2,2	0.07	0
4	EDO	A	606	-	3,3,3	0.52	0	2,2,2	0.13	0
6	NO3	B	607	-	1,3,3	3.56	1 (100%)	0,3,3	0.00	-
4	EDO	A	605	-	3,3,3	0.49	0	2,2,2	0.10	0
3	1YK	A	604	-	36,42,42	2.34	9 (25%)	40,70,70	2.40	13 (32%)

In the following table, the Chirals column lists the number of chiral outliers, the number of chiral centers analysed, the number of these observed in the model and the number defined in the Chemical Component Dictionary. Similar counts are reported in the Torsion and Rings columns. '-' means no outliers of that kind were identified.

Mol	Type	Chain	Res	Link	Chirals	Torsions	Rings
3	1YK	B	605	-	-	4/10/75/75	0/5/5/5
5	NAG	B	604	1	-	0/6/23/26	0/1/1/1
4	EDO	B	606	-	-	0/1/1/1	-
4	EDO	A	606	-	-	0/1/1/1	-
4	EDO	A	605	-	-	0/1/1/1	-
3	1YK	A	604	-	-	6/10/75/75	0/5/5/5

All (24) bond length outliers are listed below:

Mol	Chain	Res	Type	Atoms	Z	Observed(Å)	Ideal(Å)
3	B	605	1YK	C9-C10	7.37	1.52	1.38
3	A	604	1YK	C9-C10	7.13	1.51	1.38
3	A	604	1YK	C5-C4	-5.35	1.29	1.41
3	A	604	1YK	C3-C4	-4.74	1.30	1.41
3	B	605	1YK	C2-C1	4.73	1.47	1.39
3	B	605	1YK	C3-C4	-4.66	1.31	1.41
3	B	605	1YK	C5-C4	-4.40	1.31	1.41
3	B	605	1YK	C6-C1	4.32	1.47	1.39
3	A	604	1YK	C6-C1	4.29	1.47	1.39
3	A	604	1YK	C2-C1	3.87	1.46	1.39
6	B	608	NO3	O1-N	3.80	1.41	1.24
6	B	607	NO3	O1-N	3.56	1.40	1.24
5	B	604	NAG	O5-C1	3.35	1.49	1.43
3	B	605	1YK	O3-C3	3.08	1.42	1.37
3	B	605	1YK	C1-C8	3.06	1.51	1.46
3	A	604	1YK	C10-C11	-3.04	1.33	1.38
3	B	605	1YK	C7-C11	2.88	1.49	1.40
3	A	604	1YK	O3-C3	2.87	1.41	1.37

Continued on next page...

Continued from previous page...

Mol	Chain	Res	Type	Atoms	Z	Observed(Å)	Ideal(Å)
3	B	605	1YK	C10-C11	-2.68	1.33	1.38
3	A	604	1YK	C7-C11	2.40	1.48	1.40
3	A	604	1YK	C1-C8	2.30	1.50	1.46
3	B	605	1YK	O5-C5	2.23	1.40	1.37
3	B	605	1YK	C12-C13	-2.05	1.51	1.55
3	B	605	1YK	O4-C4	2.04	1.42	1.38

All (24) bond angle outliers are listed below:

Mol	Chain	Res	Type	Atoms	Z	Observed(°)	Ideal(°)
3	A	604	1YK	C6-C1-C8	7.07	129.35	120.42
3	B	605	1YK	C6-C1-C8	6.07	128.09	120.42
3	A	604	1YK	O3-C3-C2	-5.11	115.32	124.12
3	A	604	1YK	O3-C3-C4	5.09	124.11	115.16
3	B	605	1YK	O5-C5-C6	-4.96	115.58	124.12
3	B	605	1YK	C2-C1-C6	-4.61	111.49	118.31
3	A	604	1YK	C6-C5-C4	4.30	125.08	120.22
3	B	605	1YK	O3-C3-C2	-4.08	117.09	124.12
3	A	604	1YK	C2-C1-C6	-4.07	112.29	118.31
3	B	605	1YK	O3-C3-C4	3.92	122.05	115.16
5	B	604	NAG	C1-O5-C5	3.76	117.29	112.19
3	A	604	1YK	O4-C4-C5	-3.73	114.76	120.12
3	B	605	1YK	C6-C5-C4	3.50	124.18	120.22
3	A	604	1YK	C29-O5-C5	-3.18	112.74	117.53
3	A	604	1YK	O5-C5-C6	-3.10	118.79	124.12
3	B	605	1YK	O5-C5-C4	2.89	120.24	115.16
3	B	605	1YK	C29-O5-C5	-2.88	113.18	117.53
3	A	604	1YK	O4-C4-C3	2.63	123.91	120.12
3	B	605	1YK	O1-C19-C20	-2.57	116.85	121.40
3	A	604	1YK	O1-C19-C20	-2.49	116.99	121.40
3	A	604	1YK	C27-O3-C3	-2.32	114.03	117.53
3	A	604	1YK	O8-C10-C11	2.17	124.39	122.45
3	A	604	1YK	C25-C18-C19	-2.15	103.83	107.80
3	B	605	1YK	C26-C14-C15	-2.06	109.47	111.50

There are no chirality outliers.

All (10) torsion outliers are listed below:

Mol	Chain	Res	Type	Atoms
3	B	605	1YK	C4-C3-O3-C27
3	A	604	1YK	C4-C3-O3-C27
3	B	605	1YK	C4-C5-O5-C29

Continued on next page...

Continued from previous page...

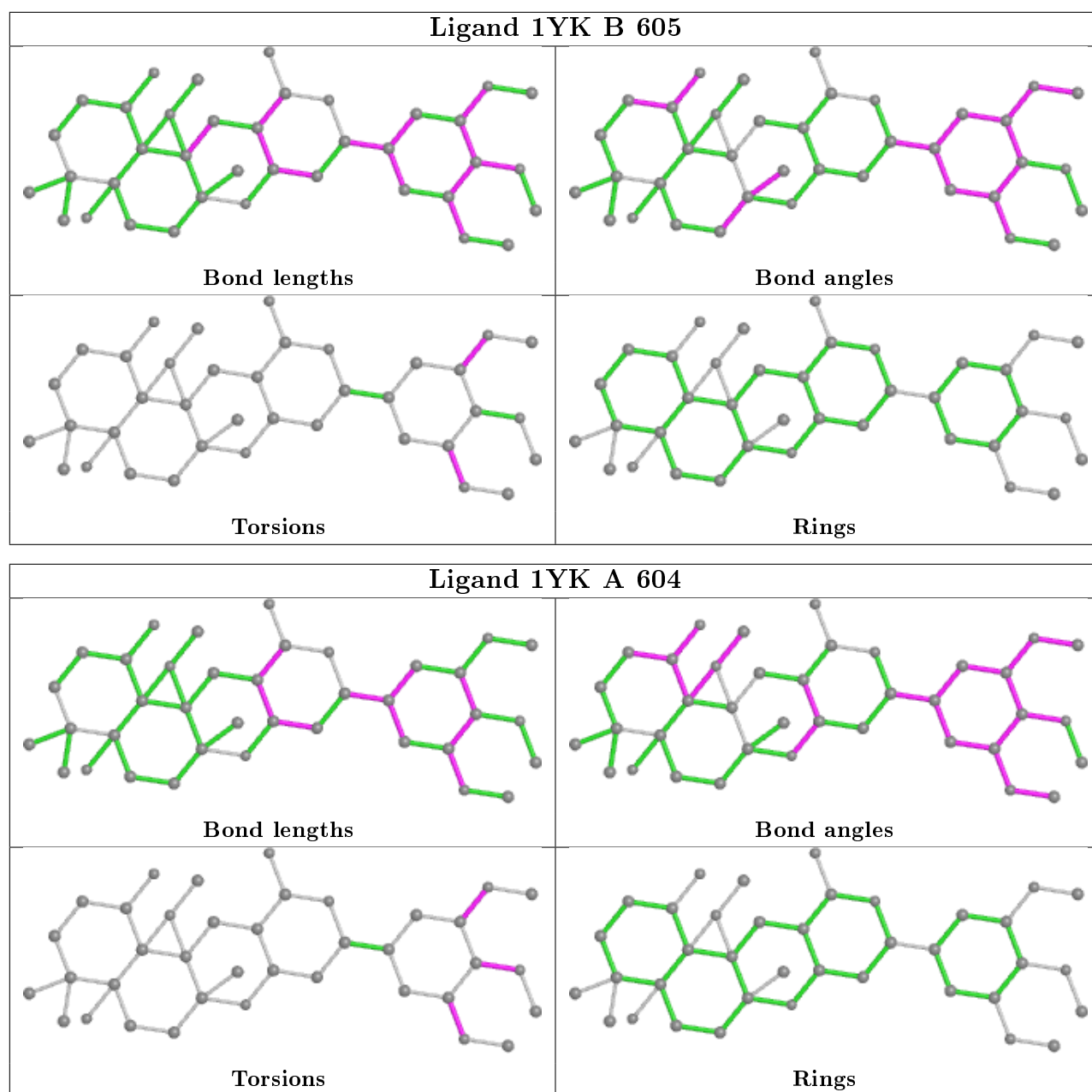
Mol	Chain	Res	Type	Atoms
3	B	605	1YK	C2-C3-O3-C27
3	A	604	1YK	C2-C3-O3-C27
3	B	605	1YK	C6-C5-O5-C29
3	A	604	1YK	C4-C5-O5-C29
3	A	604	1YK	C5-C4-O4-C28
3	A	604	1YK	C6-C5-O5-C29
3	A	604	1YK	C3-C4-O4-C28

There are no ring outliers.

5 monomers are involved in 10 short contacts:

Mol	Chain	Res	Type	Clashes	Symm-Clashes
3	B	605	1YK	3	0
4	B	606	EDO	2	0
6	B	607	NO3	1	0
4	A	605	EDO	1	0
3	A	604	1YK	3	0

The following is a two-dimensional graphical depiction of Mogul quality analysis of bond lengths, bond angles, torsion angles, and ring geometry for all instances of the Ligand of Interest. In addition, ligands with molecular weight > 250 and outliers as shown on the validation Tables will also be included. For torsion angles, if less than 5% of the Mogul distribution of torsion angles is within 10 degrees of the torsion angle in question, then that torsion angle is considered an outlier. Any bond that is central to one or more torsion angles identified as an outlier by Mogul will be highlighted in the graph. For rings, the root-mean-square deviation (RMSD) between the ring in question and similar rings identified by Mogul is calculated over all ring torsion angles. If the average RMSD is greater than 60 degrees and the minimal RMSD between the ring in question and any Mogul-identified rings is also greater than 60 degrees, then that ring is considered an outlier. The outliers are highlighted in purple. The color gray indicates Mogul did not find sufficient equivalents in the CSD to analyse the geometry.



5.7 Other polymers [i](#)

There are no such residues in this entry.

5.8 Polymer linkage issues [i](#)

There are no chain breaks in this entry.

6 Fit of model and data

6.1 Protein, DNA and RNA chains

In the following table, the column labelled ‘#RSRZ> 2’ contains the number (and percentage) of RSRZ outliers, followed by percent RSRZ outliers for the chain as percentile scores relative to all X-ray entries and entries of similar resolution. The OWAB column contains the minimum, median, 95th percentile and maximum values of the occupancy-weighted average B-factor per residue. The column labelled ‘Q< 0.9’ lists the number of (and percentage) of residues with an average occupancy less than 0.9.

Mol	Chain	Analysed	<RSRZ>	#RSRZ>2		OWAB(Å ²)	Q<0.9
1	A	530/542 (97%)	-0.17	19 (3%)	42 49	29, 43, 63, 110	0
1	B	535/542 (98%)	-0.06	24 (4%)	33 40	31, 45, 66, 104	0
All	All	1065/1084 (98%)	-0.12	43 (4%)	38 45	29, 44, 64, 110	0

All (43) RSRZ outliers are listed below:

Mol	Chain	Res	Type	RSRZ
1	B	262	THR	5.7
1	B	496	LYS	3.7
1	A	118	ILE	3.6
1	A	493	ARG	3.5
1	B	497	ALA	3.4
1	B	259	PRO	3.2
1	A	4	GLU	3.2
1	B	118	ILE	3.2
1	B	120	GLY	3.2
1	B	203	SER	3.0
1	B	165	ARG	2.9
1	A	204	ALA	2.9
1	A	206	ALA	2.9
1	B	119	TYR	2.8
1	B	491	GLU	2.8
1	A	227	LEU	2.8
1	A	207	ALA	2.7
1	B	264	GLY	2.7
1	B	207	ALA	2.6
1	B	204	ALA	2.6
1	A	209	VAL	2.6
1	A	201	GLY	2.6
1	A	203	SER	2.5
1	A	151	TYR	2.5

Continued on next page...

Continued from previous page...

Mol	Chain	Res	Type	RSRZ
1	B	121	GLY	2.5
1	B	123	PHE	2.4
1	B	122	GLY	2.4
1	B	117	TRP	2.4
1	B	407	VAL	2.4
1	A	57	SER	2.4
1	B	205	GLY	2.3
1	A	123	PHE	2.3
1	A	119	TYR	2.3
1	B	201	GLY	2.3
1	B	492	PRO	2.2
1	A	226	VAL	2.2
1	A	208	SER	2.2
1	A	120	GLY	2.2
1	A	205	GLY	2.2
1	A	231	ALA	2.2
1	B	295	PHE	2.1
1	B	206	ALA	2.0
1	B	6	ALA	2.0

6.2 Non-standard residues in protein, DNA, RNA chains [i](#)

There are no non-standard protein/DNA/RNA residues in this entry.

6.3 Carbohydrates [i](#)

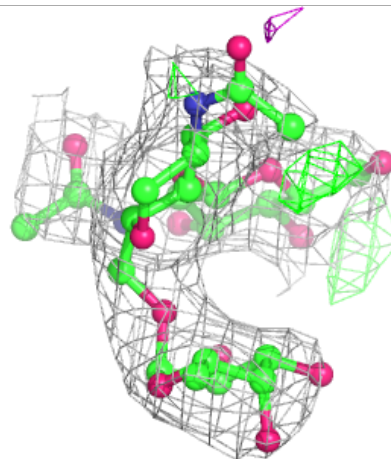
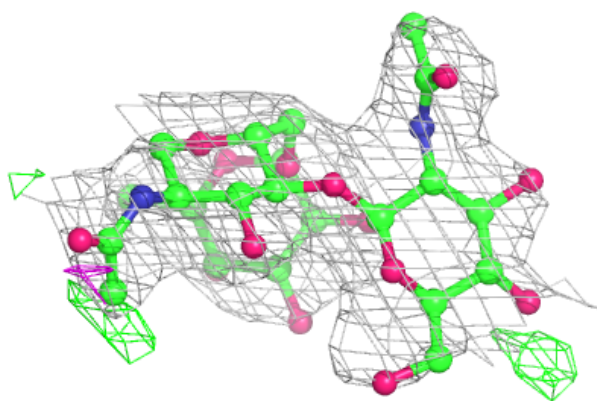
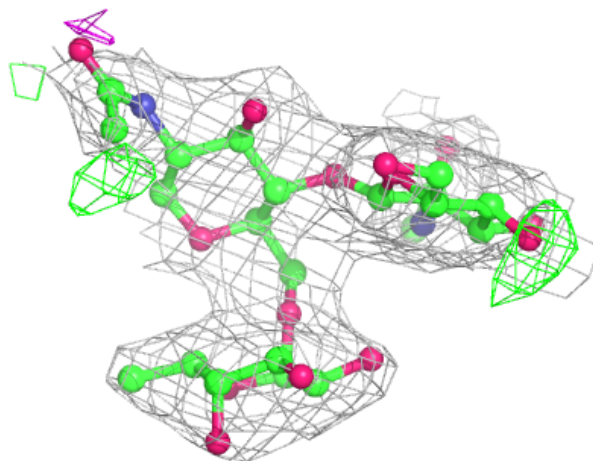
In the following table, the Atoms column lists the number of modelled atoms in the group and the number defined in the chemical component dictionary. The B-factors column lists the minimum, median, 95th percentile and maximum values of B factors of atoms in the group. The column labelled 'Q< 0.9' lists the number of atoms with occupancy less than 0.9.

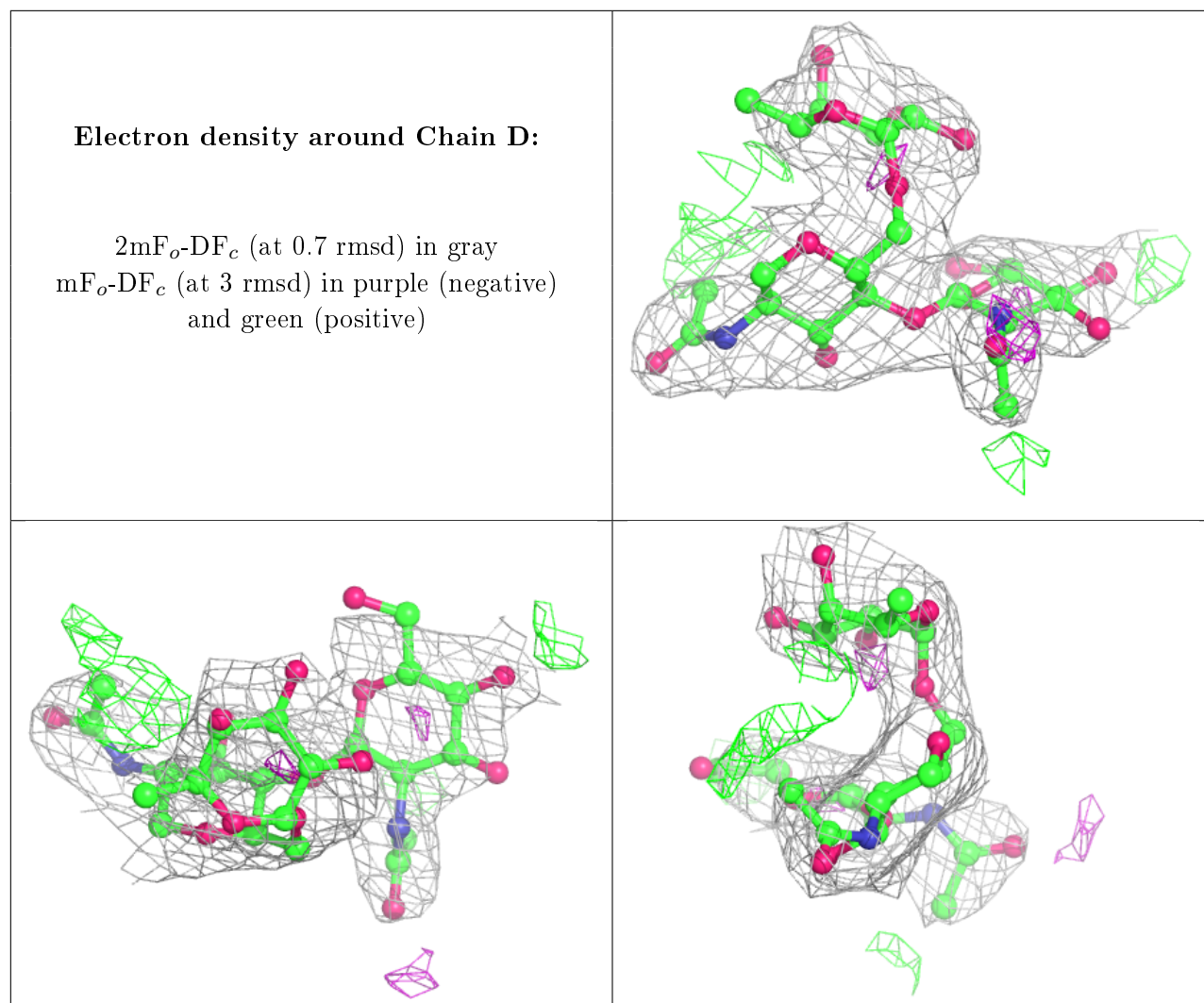
Mol	Type	Chain	Res	Atoms	RSCC	RSR	B-factors(\AA^2)	Q<0.9
2	NAG	C	2	14/15	0.86	0.34	63,94,105,106	0
2	NAG	D	2	14/15	0.86	0.40	61,89,99,100	0
2	FUC	D	3	10/11	0.92	0.34	72,89,96,96	0
2	NAG	C	1	14/15	0.93	0.22	59,68,79,89	0
2	FUC	C	3	10/11	0.94	0.37	57,83,87,92	0
2	NAG	D	1	14/15	0.94	0.20	63,73,82,82	0

The following is a graphical depiction of the model fit to experimental electron density for oligosaccharide. Each fit is shown from different orientation to approximate a three-dimensional view.

Electron density around Chain C:

$2mF_o-DF_c$ (at 0.7 rmsd) in gray
 mF_o-DF_c (at 3 rmsd) in purple (negative)
and green (positive)





6.4 Ligands [i](#)

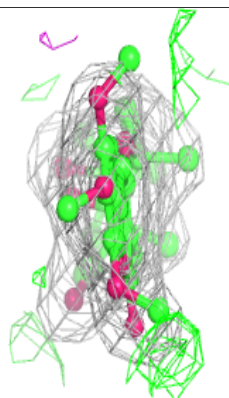
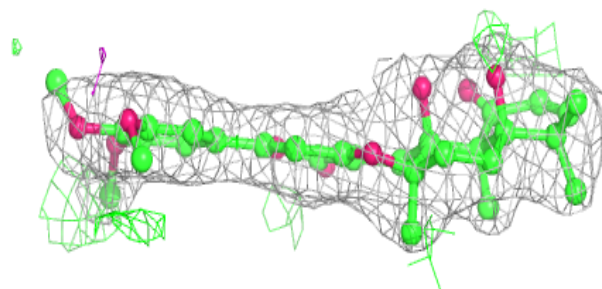
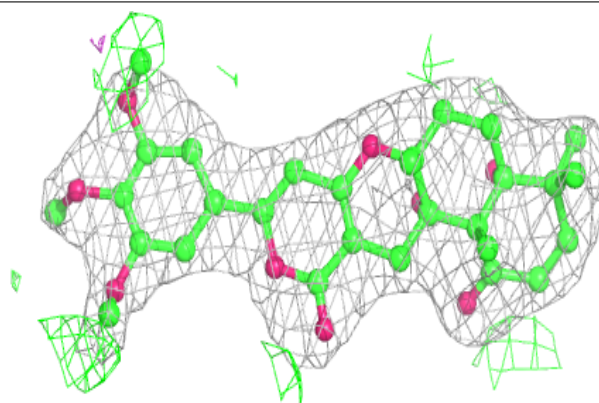
In the following table, the Atoms column lists the number of modelled atoms in the group and the number defined in the chemical component dictionary. The B-factors column lists the minimum, median, 95th percentile and maximum values of B factors of atoms in the group. The column labelled 'Q< 0.9' lists the number of atoms with occupancy less than 0.9.

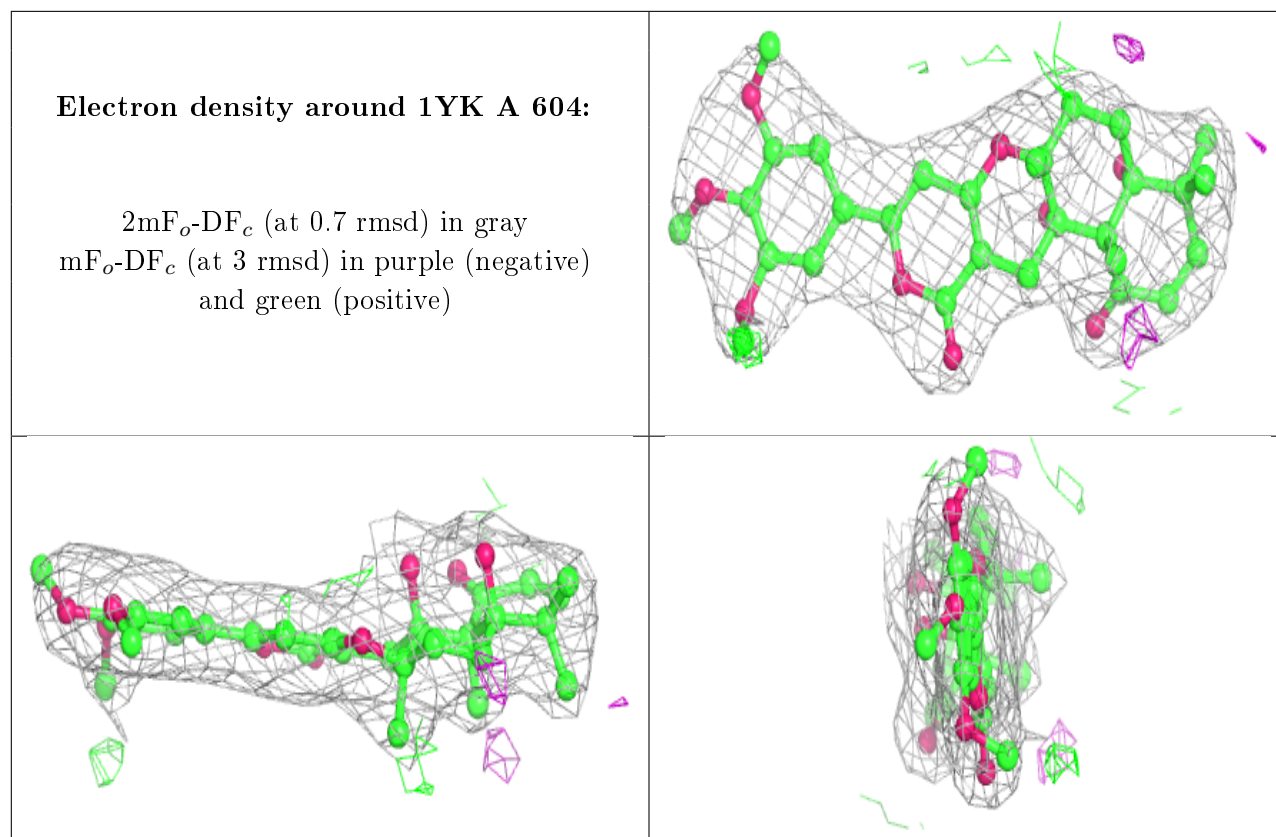
Mol	Type	Chain	Res	Atoms	RSCC	RSR	B-factors(\AA^2)	Q<0.9
5	NAG	B	604	14/15	0.72	0.26	72,89,97,98	0
3	1YK	B	605	38/38	0.93	0.18	31,41,69,70	0
6	NO3	B	608	4/4	0.93	0.21	38,44,48,48	4
4	EDO	B	606	4/4	0.95	0.18	41,43,47,51	0
4	EDO	A	605	4/4	0.95	0.12	39,39,46,52	0
3	1YK	A	604	38/38	0.95	0.14	29,36,63,67	0
6	NO3	B	607	4/4	0.96	0.22	45,46,46,51	4
4	EDO	A	606	4/4	0.98	0.11	43,45,46,46	0

The following is a graphical depiction of the model fit to experimental electron density of all instances of the Ligand of Interest. In addition, ligands with molecular weight > 250 and outliers as shown on the geometry validation Tables will also be included. Each fit is shown from different orientation to approximate a three-dimensional view.

Electron density around 1YK B 605:

2mF_o-DF_c (at 0.7 rmsd) in gray
mF_o-DF_c (at 3 rmsd) in purple (negative)
and green (positive)





6.5 Other polymers [i](#)

There are no such residues in this entry.