



Full wwPDB X-ray Structure Validation Report ⓘ

Apr 14, 2021 – 08:02 AM EDT

PDB ID : 7M1V
Title : Structure of Zika virus NS2b-NS3 protease mutant binding the compound NSC86314 in the super-open conformation
Authors : Aleshin, A.E.; Shiryaev, S.A.; Liddington, R.C.
Deposited on : 2021-03-15
Resolution : 1.60 Å(reported)

This is a Full wwPDB X-ray Structure Validation Report for a publicly released PDB entry.

We welcome your comments at validation@mail.wwpdb.org

A user guide is available at

<https://www.wwpdb.org/validation/2017/XrayValidationReportHelp>

with specific help available everywhere you see the ⓘ symbol.

The following versions of software and data (see [references ⓘ](#)) were used in the production of this report:

MolProbity : 4.02b-467
Mogul : 1.8.5 (274361), CSD as541be (2020)
Xtriage (Phenix) : 1.13
EDS : 2.18
buster-report : 1.1.7 (2018)
Percentile statistics : 20191225.v01 (using entries in the PDB archive December 25th 2019)
Refmac : 5.8.0158
CCP4 : 7.0.044 (Gargrove)
Ideal geometry (proteins) : Engh & Huber (2001)
Ideal geometry (DNA, RNA) : Parkinson et al. (1996)
Validation Pipeline (wwPDB-VP) : 2.18

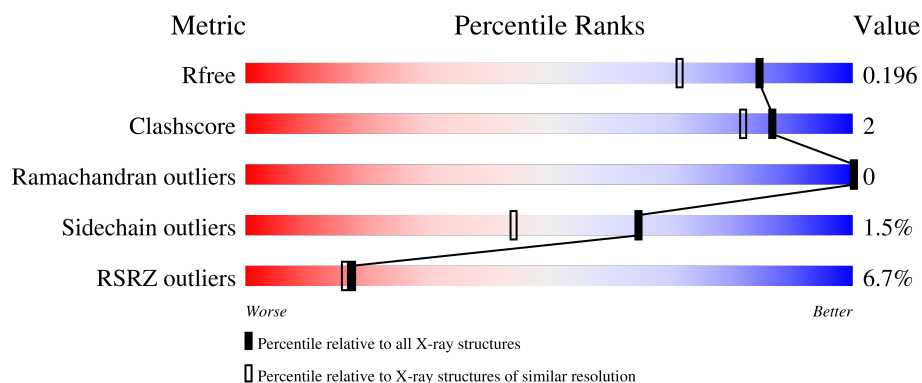
1 Overall quality at a glance

The following experimental techniques were used to determine the structure:

X-RAY DIFFRACTION

The reported resolution of this entry is 1.60 Å.

Percentile scores (ranging between 0-100) for global validation metrics of the entry are shown in the following graphic. The table shows the number of entries on which the scores are based.



Metric	Whole archive (#Entries)	Similar resolution (#Entries, resolution range(Å))
R_{free}	130704	3398 (1.60-1.60)
Clashscore	141614	3665 (1.60-1.60)
Ramachandran outliers	138981	3564 (1.60-1.60)
Sidechain outliers	138945	3563 (1.60-1.60)
RSRZ outliers	127900	3321 (1.60-1.60)

The table below summarises the geometric issues observed across the polymeric chains and their fit to the electron density. The red, orange, yellow and green segments of the lower bar indicate the fraction of residues that contain outliers for ≥ 3 , 2, 1 and 0 types of geometric quality criteria respectively. A grey segment represents the fraction of residues that are not modelled. The numeric value for each fraction is indicated below the corresponding segment, with a dot representing fractions $\leq 5\%$. The upper red bar (where present) indicates the fraction of residues that have poor fit to the electron density. The numeric value is given above the bar.

Mol	Chain	Length	Quality of chain
1	A	221	<div> <div>4%</div> <div> <div></div> <div>72%</div> <div>•</div> <div>25%</div> </div> </div>
1	B	221	<div> <div>6%</div> <div> <div></div> <div>70%</div> <div>•</div> <div>26%</div> </div> </div>

2 Entry composition

There are 6 unique types of molecules in this entry. The entry contains 2936 atoms, of which 0 are hydrogens and 0 are deuteriums.

In the tables below, the ZeroOcc column contains the number of atoms modelled with zero occupancy, the AltConf column contains the number of residues with at least one atom in alternate conformation and the Trace column contains the number of residues modelled with at most 2 atoms.

- Molecule 1 is a protein called Core protein.

Mol	Chain	Residues	Atoms					ZeroOcc	AltConf	Trace
1	A	166	Total	C	N	O	S	0	3	0
			1278	798	224	250	6			
1	B	163	Total	C	N	O	S	0	7	0
			1299	811	227	253	8			

There are 46 discrepancies between the modelled and reference sequences:

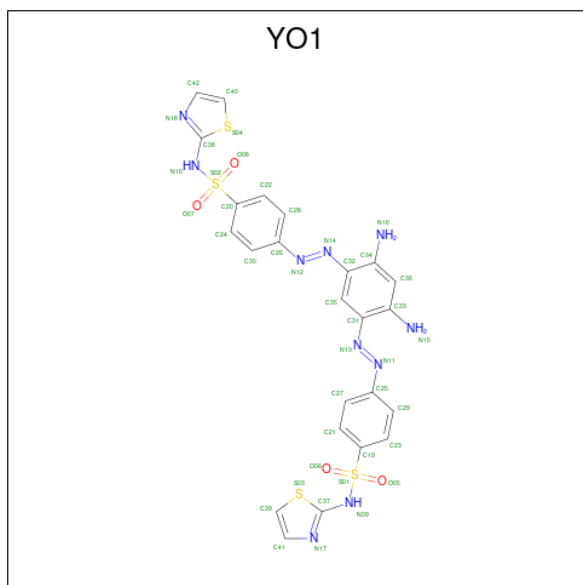
Chain	Residue	Modelled	Actual	Comment	Reference
A	43	GLY	-	expression tag	UNP A0A219YLK5
A	44	PRO	-	expression tag	UNP A0A219YLK5
A	45	LEU	-	expression tag	UNP A0A219YLK5
A	46	GLY	-	expression tag	UNP A0A219YLK5
A	47	SER	-	expression tag	UNP A0A219YLK5
A	67	VAL	ILE	conflict	UNP A0A219YLK5
A	991	ALA	-	linker	UNP A0A219YLK5
A	992	GLY	-	linker	UNP A0A219YLK5
A	993	GLY	-	linker	UNP A0A219YLK5
A	994	GLY	-	linker	UNP A0A219YLK5
A	995	GLY	-	linker	UNP A0A219YLK5
A	996	SER	-	linker	UNP A0A219YLK5
A	997	GLY	-	linker	UNP A0A219YLK5
A	998	GLY	-	linker	UNP A0A219YLK5
A	999	GLY	-	linker	UNP A0A219YLK5
A	1000	GLY	-	linker	UNP A0A219YLK5
A	1001	SER	-	linker	UNP A0A219YLK5
A	1030	THR	LEU	conflict	UNP A0A219YLK5
A	1031	SER	LEU	conflict	UNP A0A219YLK5
A	1080	SER	CYS	conflict	UNP A0A219YLK5
A	1088	CYS	ALA	conflict	UNP A0A219YLK5
A	1143	SER	CYS	conflict	UNP A0A219YLK5
A	1157	CYS	LYS	conflict	UNP A0A219YLK5
B	43	GLY	-	expression tag	UNP A0A219YLK5
B	44	PRO	-	expression tag	UNP A0A219YLK5

Continued on next page...

Continued from previous page...

Chain	Residue	Modelled	Actual	Comment	Reference
B	45	LEU	-	expression tag	UNP A0A219YLK5
B	46	GLY	-	expression tag	UNP A0A219YLK5
B	47	SER	-	expression tag	UNP A0A219YLK5
B	67	VAL	ILE	conflict	UNP A0A219YLK5
B	991	ALA	-	linker	UNP A0A219YLK5
B	992	GLY	-	linker	UNP A0A219YLK5
B	993	GLY	-	linker	UNP A0A219YLK5
B	994	GLY	-	linker	UNP A0A219YLK5
B	995	GLY	-	linker	UNP A0A219YLK5
B	996	SER	-	linker	UNP A0A219YLK5
B	997	GLY	-	linker	UNP A0A219YLK5
B	998	GLY	-	linker	UNP A0A219YLK5
B	999	GLY	-	linker	UNP A0A219YLK5
B	1000	GLY	-	linker	UNP A0A219YLK5
B	1001	SER	-	linker	UNP A0A219YLK5
B	1030	THR	LEU	conflict	UNP A0A219YLK5
B	1031	SER	LEU	conflict	UNP A0A219YLK5
B	1080	SER	CYS	conflict	UNP A0A219YLK5
B	1088	CYS	ALA	conflict	UNP A0A219YLK5
B	1143	SER	CYS	conflict	UNP A0A219YLK5
B	1157	CYS	LYS	conflict	UNP A0A219YLK5

- Molecule 2 is 4-(2-{2,4-diamino-5-[2-(4-{[(2E)-1,3-thiazolidin-2-ylidene]sulfamoyl}phenyl)hydrazinyl]phenyl}hydrazinyl)-N-[(2S)-1,3-thiazolidin-2-yl]benzene-1-sulfonamide (three-letter code: YO1) (formula: C₂₄H₂₀N₁₀O₄S₄) (labeled as "Ligand of Interest" by depositor).



Mol	Chain	Residues	Atoms					ZeroOcc	AltConf
2	A	1	Total	C	N	O	S	0	1
			42	24	10	4	4		

- Molecule 3 is 1,2-ETHANEDIOL (three-letter code: EDO) (formula: $C_2H_6O_2$).

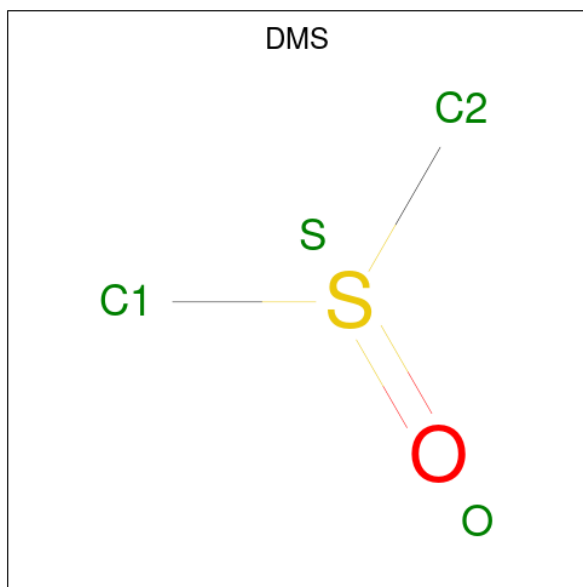


Mol	Chain	Residues	Atoms			ZeroOcc	AltConf
3	A	1	Total	C	O	0	0
			4	2	2		
3	B	1	Total	C	O	0	0
			4	2	2		
3	B	1	Total	C	O	0	0
			4	2	2		

- Molecule 4 is CHLORIDE ION (three-letter code: CL) (formula: Cl).

Mol	Chain	Residues	Atoms		ZeroOcc	AltConf
4	A	1	Total	Cl	0	0
			1	1		

- Molecule 5 is DIMETHYL SULFOXIDE (three-letter code: DMS) (formula: C_2H_6OS).



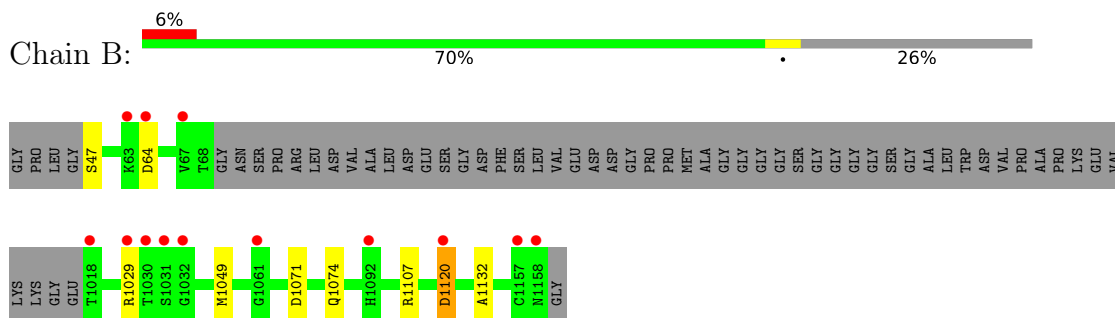
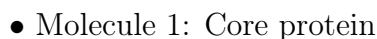
Mol	Chain	Residues	Atoms				ZeroOcc	AltConf
5	B	1	Total	C	O	S	0	0
			4	2	1	1		

- Molecule 6 is water.

Mol	Chain	Residues	Atoms		ZeroOcc	AltConf
6	A	166	Total	O	0	10
			166	166		
6	B	134	Total	O	0	1
			134	134		

i

- Molecule 1: Core protein



4 Data and refinement statistics

Property	Value	Source
Space group	P 1	Depositor
Cell constants a, b, c, α , β , γ	40.81Å 42.64Å 46.30Å 98.88° 92.11° 90.41°	Depositor
Resolution (Å)	33.68 – 1.60 33.68 – 1.60	Depositor EDS
% Data completeness (in resolution range)	94.0 (33.68-1.60) 93.9 (33.68-1.60)	Depositor EDS
R_{merge}	0.02	Depositor
R_{sym}	(Not available)	Depositor
$\langle I/\sigma(I) \rangle$ ¹	6.38 (at 1.60Å)	Xtriage
Refinement program	REFMAC 5.8.0257	Depositor
R, R_{free}	0.160 , 0.189 0.173 , 0.196	Depositor DCC
R_{free} test set	1872 reflections (4.90%)	wwPDB-VP
Wilson B-factor (Å ²)	19.2	Xtriage
Anisotropy	0.463	Xtriage
Bulk solvent k_{sol} (e/Å ³), B_{sol} (Å ²)	0.32 , 41.1	EDS
L-test for twinning ²	$\langle L \rangle = 0.50$, $\langle L^2 \rangle = 0.33$	Xtriage
Estimated twinning fraction	0.017 for h,-k,-l	Xtriage
F_o, F_c correlation	0.97	EDS
Total number of atoms	2936	wwPDB-VP
Average B, all atoms (Å ²)	28.0	wwPDB-VP

Xtriage's analysis on translational NCS is as follows: *The largest off-origin peak in the Patterson function is 8.03% of the height of the origin peak. No significant pseudotranslation is detected.*

¹Intensities estimated from amplitudes.

²Theoretical values of $\langle |L| \rangle$, $\langle L^2 \rangle$ for acentric reflections are 0.5, 0.333 respectively for untwinned datasets, and 0.375, 0.2 for perfectly twinned datasets.

5 Model quality

5.1 Standard geometry

Bond lengths and bond angles in the following residue types are not validated in this section: YO1, DMS, EDO, CL

The Z score for a bond length (or angle) is the number of standard deviations the observed value is removed from the expected value. A bond length (or angle) with $|Z| > 5$ is considered an outlier worth inspection. RMSZ is the root-mean-square of all Z scores of the bond lengths (or angles).

Mol	Chain	Bond lengths		Bond angles	
		RMSZ	$\# Z > 5$	RMSZ	$\# Z > 5$
1	A	0.81	0/1305	0.95	0/1770
1	B	0.77	0/1326	0.94	0/1798
All	All	0.79	0/2631	0.95	0/3568

There are no bond length outliers.

There are no bond angle outliers.

There are no chirality outliers.

There are no planarity outliers.

5.2 Too-close contacts

In the following table, the Non-H and H(model) columns list the number of non-hydrogen atoms and hydrogen atoms in the chain respectively. The H(added) column lists the number of hydrogen atoms added and optimized by MolProbity. The Clashes column lists the number of clashes within the asymmetric unit, whereas Symm-Clashes lists symmetry-related clashes.

Mol	Chain	Non-H	H(model)	H(added)	Clashes	Symm-Clashes
1	A	1278	0	1232	3	0
1	B	1299	0	1253	6	0
2	A	42	0	0	0	0
3	A	4	0	6	0	0
3	B	8	0	12	1	0
4	A	1	0	0	0	0
5	B	4	0	6	0	0
6	A	166	0	0	1	0
6	B	134	0	0	1	0
All	All	2936	0	2509	9	0

The all-atom clashscore is defined as the number of clashes found per 1000 atoms (including

hydrogen atoms). The all-atom clashscore for this structure is 2.

All (9) close contacts within the same asymmetric unit are listed below, sorted by their clash magnitude.

Atom-1	Atom-2	Interatomic distance (Å)	Clash overlap (Å)
1:B:1120:ASP:OD1	1:B:1120:ASP:N	2.10	0.83
1:B:47:SER:N	6:B:1305:HOH:O	2.43	0.51
1:A:1071:ASP:OD2	1:A:1074:GLN:NE2	2.42	0.47
1:A:1118:THR:HG23	6:A:1339:HOH:O	2.14	0.46
1:B:1132:ALA:HA	3:B:1201:EDO:H12	1.98	0.46
1:B:1029:ARG:N	1:B:1029:ARG:HD2	2.31	0.45
1:A:1055:GLY:O	1:A:1067:PRO:HG3	2.17	0.44
1:B:1071:ASP:OD2	1:B:1074:GLN:NE2	2.47	0.41
1:B:1049:MET:H	1:B:1049:MET:HG2	1.66	0.40

There are no symmetry-related clashes.

5.3 Torsion angles ⓘ

5.3.1 Protein backbone ⓘ

In the following table, the Percentiles column shows the percent Ramachandran outliers of the chain as a percentile score with respect to all X-ray entries followed by that with respect to entries of similar resolution.

The Analysed column shows the number of residues for which the backbone conformation was analysed, and the total number of residues.

Mol	Chain	Analysed	Favoured	Allowed	Outliers	Percentiles	
1	A	165/221 (75%)	160 (97%)	5 (3%)	0	100	100
1	B	166/221 (75%)	162 (98%)	4 (2%)	0	100	100
All	All	331/442 (75%)	322 (97%)	9 (3%)	0	100	100

There are no Ramachandran outliers to report.

5.3.2 Protein sidechains ⓘ

In the following table, the Percentiles column shows the percent sidechain outliers of the chain as a percentile score with respect to all X-ray entries followed by that with respect to entries of similar resolution.

The Analysed column shows the number of residues for which the sidechain conformation was

analysed, and the total number of residues.

Mol	Chain	Analysed	Rotameric	Outliers	Percentiles	
1	A	136/170 (80%)	135 (99%)	1 (1%)	84	73
1	B	140/170 (82%)	137 (98%)	3 (2%)	53	29
All	All	276/340 (81%)	272 (99%)	4 (1%)	65	47

All (4) residues with a non-rotameric sidechain are listed below:

Mol	Chain	Res	Type
1	A	1107	ARG
1	B	64	ASP
1	B	1107	ARG
1	B	1120	ASP

Sometimes sidechains can be flipped to improve hydrogen bonding and reduce clashes. All (1) such sidechains are listed below:

Mol	Chain	Res	Type
1	B	1152	ASN

5.3.3 RNA [i](#)

There are no RNA molecules in this entry.

5.4 Non-standard residues in protein, DNA, RNA chains [i](#)

There are no non-standard protein/DNA/RNA residues in this entry.

5.5 Carbohydrates [i](#)

There are no monosaccharides in this entry.

5.6 Ligand geometry [i](#)

Of 6 ligands modelled in this entry, 1 is monoatomic - leaving 5 for Mogul analysis.

In the following table, the Counts columns list the number of bonds (or angles) for which Mogul statistics could be retrieved, the number of bonds (or angles) that are observed in the model and the number of bonds (or angles) that are defined in the Chemical Component Dictionary. The Link column lists molecule types, if any, to which the group is linked. The Z score for a bond

length (or angle) is the number of standard deviations the observed value is removed from the expected value. A bond length (or angle) with $|Z| > 2$ is considered an outlier worth inspection. RMSZ is the root-mean-square of all Z scores of the bond lengths (or angles).

Mol	Type	Chain	Res	Link	Bond lengths			Bond angles		
					Counts	RMSZ	# Z > 2	Counts	RMSZ	# Z > 2
5	DMS	B	1202	-	3,3,3	0.20	0	3,3,3	0.12	0
3	EDO	B	1203	-	3,3,3	0.23	0	2,2,2	0.25	0
3	EDO	B	1201	-	3,3,3	0.36	0	2,2,2	0.66	0
3	EDO	A	1202	-	3,3,3	0.38	0	2,2,2	0.73	0
2	YO1	A	1201[A]	-	42,46,46	5.54	33 (78%)	50,66,66	3.39	16 (32%)

In the following table, the Chirals column lists the number of chiral outliers, the number of chiral centers analysed, the number of these observed in the model and the number defined in the Chemical Component Dictionary. Similar counts are reported in the Torsion and Rings columns. '-' means no outliers of that kind were identified.

Mol	Type	Chain	Res	Link	Chirals	Torsions	Rings
3	EDO	B	1201	-	-	1/1/1/1	-
3	EDO	B	1203	-	-	0/1/1/1	-
2	YO1	A	1201[A]	-	-	8/28/32/32	0/5/5/5
3	EDO	A	1202	-	-	0/1/1/1	-

All (33) bond length outliers are listed below:

Mol	Chain	Res	Type	Atoms	Z	Observed(Å)	Ideal(Å)
2	A	1201[A]	YO1	C36-C33	9.67	1.54	1.40
2	A	1201[A]	YO1	C24-C20	9.60	1.53	1.38
2	A	1201[A]	YO1	C36-C34	9.05	1.53	1.40
2	A	1201[A]	YO1	C23-C19	8.97	1.52	1.38
2	A	1201[A]	YO1	C22-C20	8.95	1.52	1.38
2	A	1201[A]	YO1	C35-C32	7.89	1.52	1.40
2	A	1201[A]	YO1	C30-C24	7.74	1.52	1.38
2	A	1201[A]	YO1	C29-C23	7.57	1.52	1.38
2	A	1201[A]	YO1	C28-C22	7.48	1.52	1.38
2	A	1201[A]	YO1	C21-C19	7.45	1.50	1.38
2	A	1201[A]	YO1	C35-C31	7.28	1.51	1.40
2	A	1201[A]	YO1	C30-C26	7.22	1.53	1.39
2	A	1201[A]	YO1	C28-C26	7.19	1.53	1.39
2	A	1201[A]	YO1	C33-C31	7.19	1.53	1.41
2	A	1201[A]	YO1	C29-C25	6.62	1.51	1.39
2	A	1201[A]	YO1	C34-C32	6.34	1.51	1.41
2	A	1201[A]	YO1	C27-C21	6.25	1.50	1.38
2	A	1201[A]	YO1	C27-C25	5.34	1.49	1.39

Continued on next page...

Continued from previous page...

Mol	Chain	Res	Type	Atoms	Z	Observed(Å)	Ideal(Å)
2	A	1201[A]	YO1	S02-N10	5.12	1.72	1.63
2	A	1201[A]	YO1	C41-N17	4.42	1.58	1.37
2	A	1201[A]	YO1	C42-N18	4.24	1.57	1.37
2	A	1201[A]	YO1	C20-S02	4.09	1.82	1.76
2	A	1201[A]	YO1	S01-N09	4.04	1.70	1.63
2	A	1201[A]	YO1	O06-S01	3.96	1.48	1.43
2	A	1201[A]	YO1	C40-S04	-3.94	1.52	1.71
2	A	1201[A]	YO1	C39-S03	-3.69	1.53	1.71
2	A	1201[A]	YO1	C38-N10	3.55	1.46	1.40
2	A	1201[A]	YO1	O08-S02	3.29	1.47	1.43
2	A	1201[A]	YO1	O07-S02	3.19	1.47	1.43
2	A	1201[A]	YO1	C37-N09	3.10	1.45	1.40
2	A	1201[A]	YO1	C33-N15	2.41	1.45	1.37
2	A	1201[A]	YO1	C19-S01	2.26	1.79	1.76
2	A	1201[A]	YO1	C34-N16	2.25	1.45	1.37

All (16) bond angle outliers are listed below:

Mol	Chain	Res	Type	Atoms	Z	Observed(°)	Ideal(°)
2	A	1201[A]	YO1	O08-S02-O07	-14.74	101.43	119.55
2	A	1201[A]	YO1	O06-S01-O05	-12.32	104.41	119.55
2	A	1201[A]	YO1	C21-C19-S01	-5.60	113.68	119.77
2	A	1201[A]	YO1	C23-C19-S01	4.87	125.06	119.77
2	A	1201[A]	YO1	C20-S02-N10	3.92	111.77	106.83
2	A	1201[A]	YO1	O06-S01-N09	3.74	116.10	106.73
2	A	1201[A]	YO1	C37-N09-S01	-3.67	117.49	124.16
2	A	1201[A]	YO1	O05-S01-C19	-3.49	103.66	107.97
2	A	1201[A]	YO1	C25-N11-N13	3.44	130.07	112.99
2	A	1201[A]	YO1	O06-S01-C19	3.05	111.72	107.97
2	A	1201[A]	YO1	C26-N12-N14	2.75	126.62	112.99
2	A	1201[A]	YO1	C31-N13-N11	-2.74	108.25	114.56
2	A	1201[A]	YO1	C31-C33-N15	2.73	123.83	120.18
2	A	1201[A]	YO1	C19-S01-N09	2.49	109.97	106.83
2	A	1201[A]	YO1	O07-S02-C20	2.43	110.96	107.97
2	A	1201[A]	YO1	O08-S02-C20	2.22	110.70	107.97

There are no chirality outliers.

All (9) torsion outliers are listed below:

Mol	Chain	Res	Type	Atoms
2	A	1201[A]	YO1	C37-N09-S01-O06
3	B	1201	EDO	O1-C1-C2-O2

Continued on next page...

Continued from previous page...

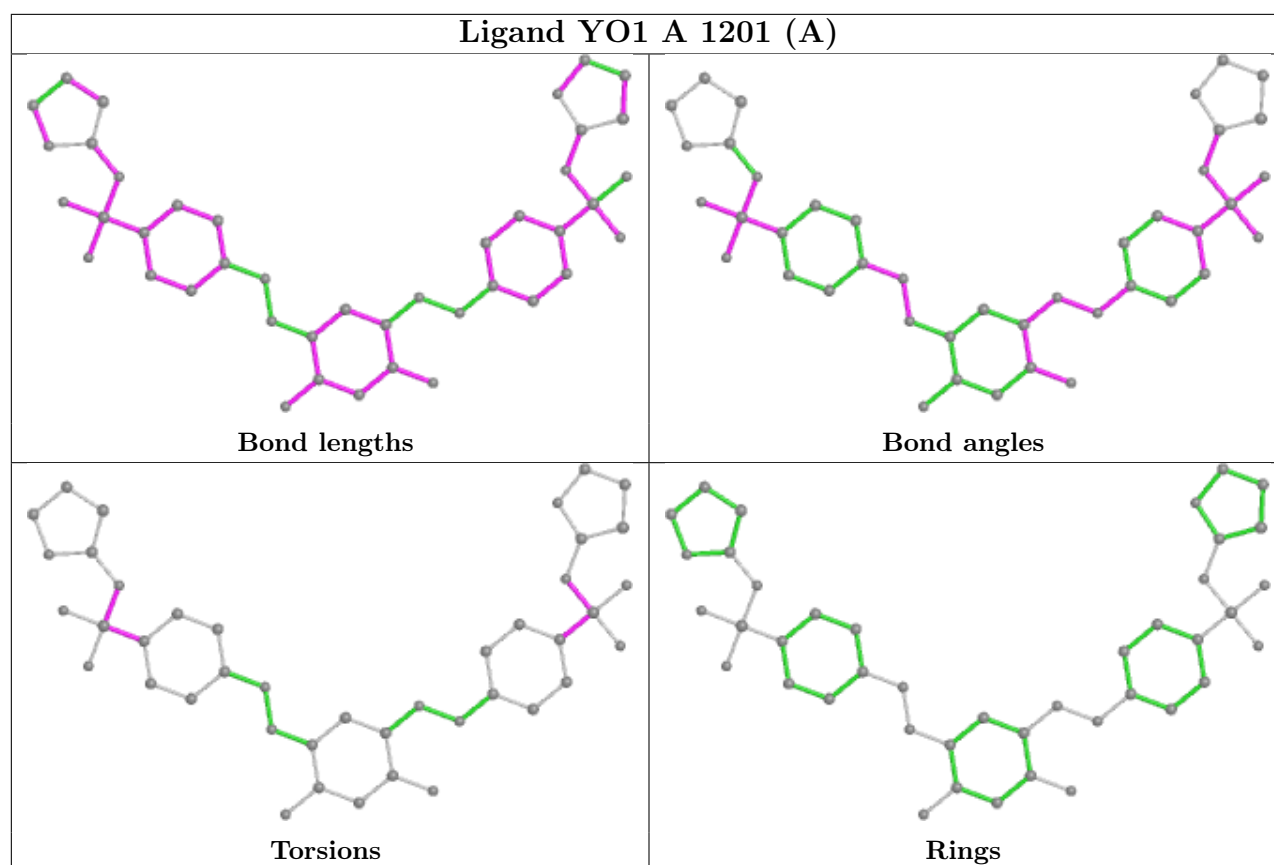
Mol	Chain	Res	Type	Atoms
2	A	1201[A]	YO1	C37-N09-S01-O05
2	A	1201[A]	YO1	C22-C20-S02-O07
2	A	1201[A]	YO1	C24-C20-S02-O07
2	A	1201[A]	YO1	C38-N10-S02-O08
2	A	1201[A]	YO1	C21-C19-S01-O05
2	A	1201[A]	YO1	C23-C19-S01-O05
2	A	1201[A]	YO1	C37-N09-S01-C19

There are no ring outliers.

1 monomer is involved in 1 short contact:

Mol	Chain	Res	Type	Clashes	Symm-Clashes
3	B	1201	EDO	1	0

The following is a two-dimensional graphical depiction of Mogul quality analysis of bond lengths, bond angles, torsion angles, and ring geometry for all instances of the Ligand of Interest. In addition, ligands with molecular weight > 250 and outliers as shown on the validation Tables will also be included. For torsion angles, if less than 5% of the Mogul distribution of torsion angles is within 10 degrees of the torsion angle in question, then that torsion angle is considered an outlier. Any bond that is central to one or more torsion angles identified as an outlier by Mogul will be highlighted in the graph. For rings, the root-mean-square deviation (RMSD) between the ring in question and similar rings identified by Mogul is calculated over all ring torsion angles. If the average RMSD is greater than 60 degrees and the minimal RMSD between the ring in question and any Mogul-identified rings is also greater than 60 degrees, then that ring is considered an outlier. The outliers are highlighted in purple. The color gray indicates Mogul did not find sufficient equivalents in the CSD to analyse the geometry.



5.7 Other polymers [i](#)

There are no such residues in this entry.

5.8 Polymer linkage issues [i](#)

There are no chain breaks in this entry.

6 Fit of model and data [i](#)

6.1 Protein, DNA and RNA chains [i](#)

In the following table, the column labelled ‘#RSRZ > 2’ contains the number (and percentage) of RSRZ outliers, followed by percent RSRZ outliers for the chain as percentile scores relative to all X-ray entries and entries of similar resolution. The OWAB column contains the minimum, median, 95th percentile and maximum values of the occupancy-weighted average B-factor per residue. The column labelled ‘Q < 0.9’ lists the number of (and percentage) of residues with an average occupancy less than 0.9.

Mol	Chain	Analysed	<RSRZ>	#RSRZ>2	OWAB(Å ²)	Q<0.9
1	A	166/221 (75%)	0.07	9 (5%) 25 23	13, 22, 46, 95	0
1	B	163/221 (73%)	0.22	13 (7%) 12 11	14, 24, 55, 83	0
All	All	329/442 (74%)	0.14	22 (6%) 17 16	13, 23, 55, 95	0

All (22) RSRZ outliers are listed below:

Mol	Chain	Res	Type	RSRZ
1	B	1030	THR	8.2
1	B	1018	THR	7.0
1	A	68	THR	5.3
1	A	1018	THR	4.8
1	A	1120	ASP	4.6
1	B	1031	SER	4.3
1	B	1032	GLY	4.2
1	A	64	ASP	4.1
1	B	1158[A]	ASN	3.9
1	B	1061	GLY	3.5
1	B	64	ASP	3.3
1	A	1119	LYS	3.0
1	A	1159	GLY	3.0
1	B	63	LYS	2.7
1	B	1029	ARG	2.6
1	B	67	VAL	2.5
1	A	1118	THR	2.4
1	B	1092	HIS	2.3
1	B	1120	ASP	2.3
1	A	1019	THR	2.2
1	B	1157[A]	CYS	2.1
1	A	1117	LYS	2.1

6.2 Non-standard residues in protein, DNA, RNA chains [i](#)

There are no non-standard protein/DNA/RNA residues in this entry.

6.3 Carbohydrates [i](#)

There are no monosaccharides in this entry.

6.4 Ligands [i](#)

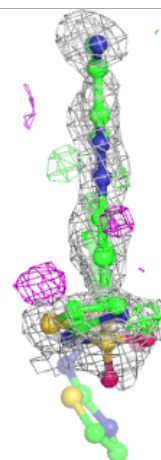
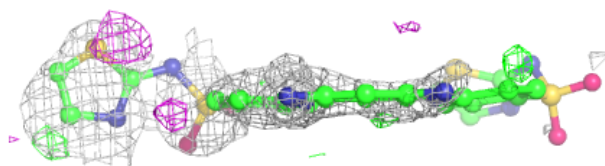
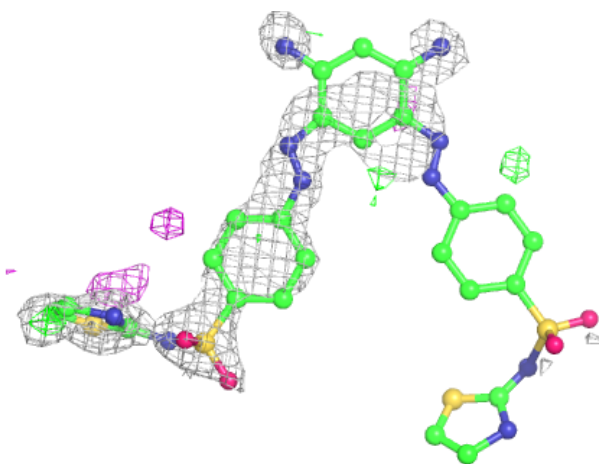
In the following table, the Atoms column lists the number of modelled atoms in the group and the number defined in the chemical component dictionary. The B-factors column lists the minimum, median, 95th percentile and maximum values of B factors of atoms in the group. The column labelled 'Q< 0.9' lists the number of atoms with occupancy less than 0.9.

Mol	Type	Chain	Res	Atoms	RSCC	RSR	B-factors(\AA^2)	Q<0.9
3	EDO	A	1202	4/4	0.79	0.28	42,43,44,47	0
3	EDO	B	1203	4/4	0.80	0.20	38,41,42,44	0
2	YO1	A	1201[A]	42/42	0.83	0.33	40,53,119,129	42
5	DMS	B	1202	4/4	0.83	0.16	66,70,77,79	0
3	EDO	B	1201	4/4	0.88	0.18	40,41,46,47	0
4	CL	A	1203	1/1	1.00	0.10	19,19,19,19	0

The following is a graphical depiction of the model fit to experimental electron density of all instances of the Ligand of Interest. In addition, ligands with molecular weight > 250 and outliers as shown on the geometry validation Tables will also be included. Each fit is shown from different orientation to approximate a three-dimensional view.

Electron density around YO1 A 1201 (A):

$2mF_o-DF_c$ (at 0.7 rmsd) in gray
 mF_o-DF_c (at 3 rmsd) in purple (negative)
and green (positive)



6.5 Other polymers [i](#)

There are no such residues in this entry.