



# Full wwPDB X-ray Structure Validation Report ⓘ

May 21, 2020 – 08:43 pm BST

PDB ID : 1M22  
Title : X-ray structure of native peptide amidase from *Stenotrophomonas maltophilia* at 1.4 Å  
Authors : Labahn, J.; Neumann, S.; Buldt, G.; Kula, M.-R.; Granzin, J.  
Deposited on : 2002-06-21  
Resolution : 1.40 Å(reported)

This is a Full wwPDB X-ray Structure Validation Report for a publicly released PDB entry.

We welcome your comments at [validation@mail.wwpdb.org](mailto:validation@mail.wwpdb.org)

A user guide is available at

<https://www.wwpdb.org/validation/2017/XrayValidationReportHelp>

with specific help available everywhere you see the ⓘ symbol.

---

The following versions of software and data (see [references ⓘ](#)) were used in the production of this report:

MolProbity : 4.02b-467  
Mogul : 1.8.5 (274361), CSD as541be (2020)  
Xtriage (Phenix) : 1.13  
EDS : 2.11  
Percentile statistics : 20191225.v01 (using entries in the PDB archive December 25th 2019)  
Refmac : 5.8.0158  
CCP4 : 7.0.044 (Gargrove)  
Ideal geometry (proteins) : Engh & Huber (2001)  
Ideal geometry (DNA, RNA) : Parkinson et al. (1996)  
Validation Pipeline (wwPDB-VP) : 2.11

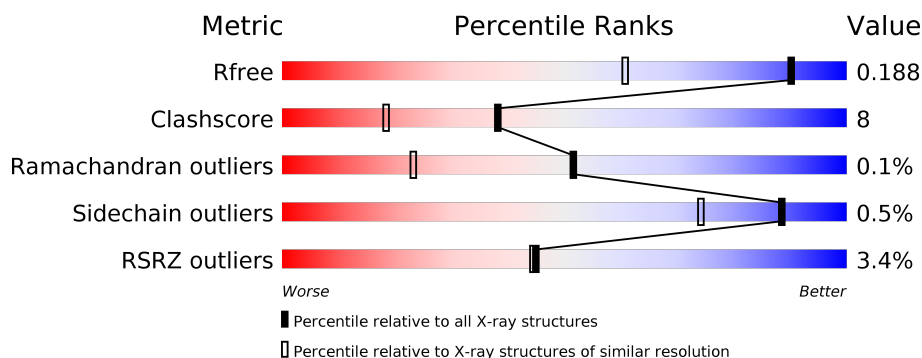
# 1 Overall quality at a glance ⓘ

The following experimental techniques were used to determine the structure:

## *X-RAY DIFFRACTION*

The reported resolution of this entry is 1.40 Å.

Percentile scores (ranging between 0-100) for global validation metrics of the entry are shown in the following graphic. The table shows the number of entries on which the scores are based.



Metric	Whole archive (#Entries)	Similar resolution (#Entries, resolution range(Å))
$R_{free}$	130704	1714 (1.40-1.40)
Clashscore	141614	1812 (1.40-1.40)
Ramachandran outliers	138981	1763 (1.40-1.40)
Sidechain outliers	138945	1762 (1.40-1.40)
RSRZ outliers	127900	1674 (1.40-1.40)

The table below summarises the geometric issues observed across the polymeric chains and their fit to the electron density. The red, orange, yellow and green segments on the lower bar indicate the fraction of residues that contain outliers for  $\geq 3$ , 2, 1 and 0 types of geometric quality criteria respectively. A grey segment represents the fraction of residues that are not modelled. The numeric value for each fraction is indicated below the corresponding segment, with a dot representing fractions  $\leq 5\%$ . The upper red bar (where present) indicates the fraction of residues that have poor fit to the electron density. The numeric value is given above the bar.

Mol	Chain	Length	Quality of chain
1	A	503	<div> <div>3%</div> <div> <div></div> <div>84%</div> <div>12%</div> <div></div> </div> <div></div> </div>
1	B	503	<div> <div>4%</div> <div> <div></div> <div>84%</div> <div>12%</div> <div></div> </div> <div></div> </div>

The following table lists non-polymeric compounds, carbohydrate monomers and non-standard residues in protein, DNA, RNA chains that are outliers for geometric or electron-density-fit criteria:

Mol	Type	Chain	Res	Chirality	Geometry	Clashes	Electron density
2	EPE	A	2001	-	-	X	-

## 2 Entry composition [i](#)

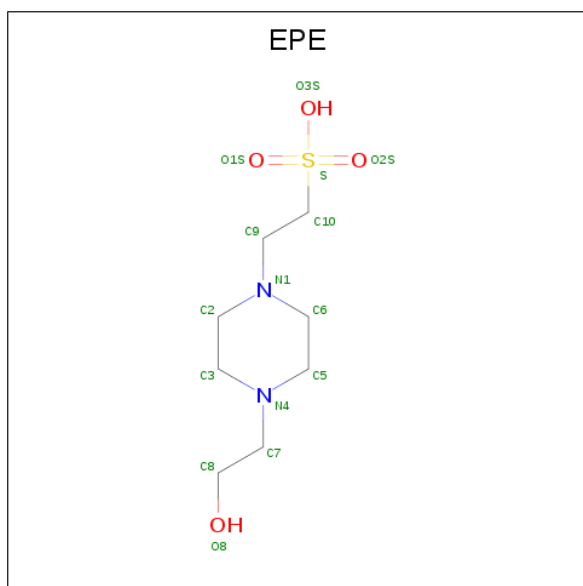
There are 3 unique types of molecules in this entry. The entry contains 8477 atoms, of which 0 are hydrogens and 0 are deuteriums.

In the tables below, the ZeroOcc column contains the number of atoms modelled with zero occupancy, the AltConf column contains the number of residues with at least one atom in alternate conformation and the Trace column contains the number of residues modelled with at most 2 atoms.

- Molecule 1 is a protein called peptide amidase.

Mol	Chain	Residues	Atoms					ZeroOcc	AltConf	Trace
1	A	487	Total	C	N	O	S	0	0	0
			3649	2284	667	688	10			
1	B	487	Total	C	N	O	S	0	0	0
			3649	2284	667	688	10			

- Molecule 2 is 4-(2-HYDROXYETHYL)-1-PIPERAZINE ETHANESULFONIC ACID (three-letter code: EPE) (formula: C<sub>8</sub>H<sub>18</sub>N<sub>2</sub>O<sub>4</sub>S).



Mol	Chain	Residues	Atoms					ZeroOcc	AltConf
2	A	1	Total	C	N	O	S	0	0
			15	8	2	4	1		
2	B	1	Total	C	N	O	S	0	0
			15	8	2	4	1		

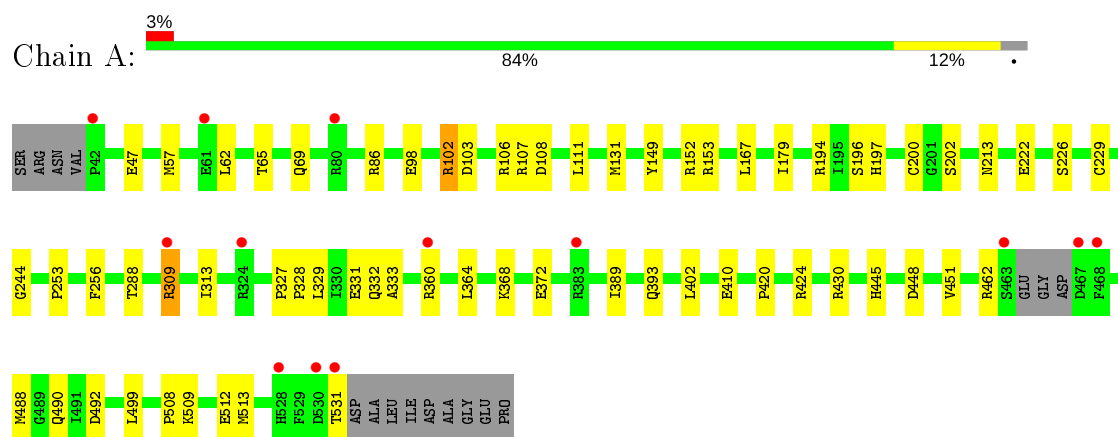
- Molecule 3 is water.

Mol	Chain	Residues	Atoms		ZeroOcc	AltConf
3	A	608	Total 608	O 608	2	0
3	B	541	Total 541	O 541	0	0

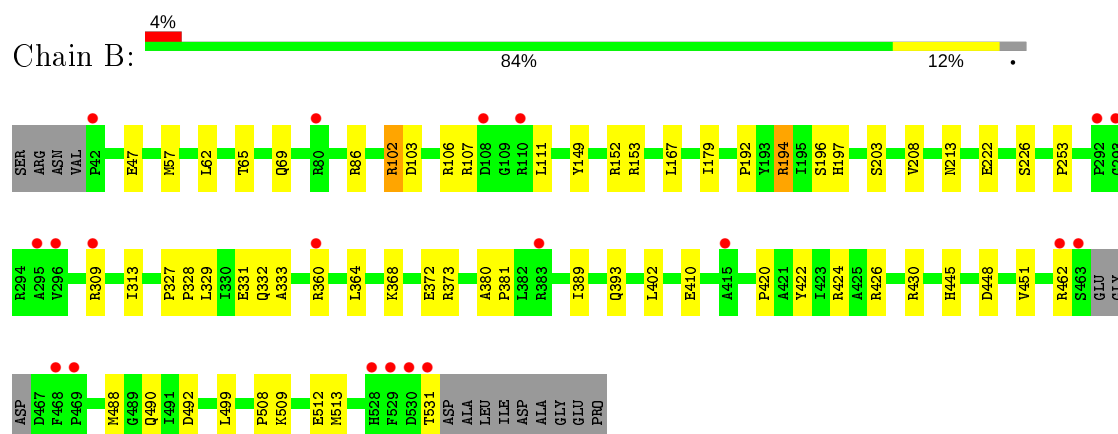
### 3 Residue-property plots [i](#)

These plots are drawn for all protein, RNA and DNA chains in the entry. The first graphic for a chain summarises the proportions of the various outlier classes displayed in the second graphic. The second graphic shows the sequence view annotated by issues in geometry and electron density. Residues are color-coded according to the number of geometric quality criteria for which they contain at least one outlier: green = 0, yellow = 1, orange = 2 and red = 3 or more. A red dot above a residue indicates a poor fit to the electron density ( $RSRZ > 2$ ). Stretches of 2 or more consecutive residues without any outlier are shown as a green connector. Residues present in the sample, but not in the model, are shown in grey.

- Molecule 1: peptide amidase



- Molecule 1: peptide amidase



## 4 Data and refinement statistics

Property	Value	Source
Space group	P 1 21 1	Depositor
Cell constants a, b, c, $\alpha$ , $\beta$ , $\gamma$	74.18Å 62.60Å 101.91Å 90.00° 90.00° 90.00°	Depositor
Resolution (Å)	79.00 – 1.40 74.18 – 1.40	Depositor EDS
% Data completeness (in resolution range)	99.0 (79.00-1.40) 99.2 (74.18-1.40)	Depositor EDS
$R_{merge}$	0.10	Depositor
$R_{sym}$	(Not available)	Depositor
$\langle I/\sigma(I) \rangle$ <sup>1</sup>	5.10 (at 1.40Å)	Xtriage
Refinement program	CNS 1.0	Depositor
R, $R_{free}$	0.188 , 0.199 0.176 , 0.188	Depositor DCC
$R_{free}$ test set	8947 reflections (4.91%)	wwPDB-VP
Wilson B-factor (Å <sup>2</sup> )	12.0	Xtriage
Anisotropy	0.025	Xtriage
Bulk solvent $k_{sol}$ (e/Å <sup>3</sup> ), $B_{sol}$ (Å <sup>2</sup> )	0.36 , 35.3	EDS
L-test for twinning <sup>2</sup>	$\langle  L  \rangle = 0.49$ , $\langle L^2 \rangle = 0.32$	Xtriage
Estimated twinning fraction	0.469 for h,-k,-l	Xtriage
$F_o, F_c$ correlation	0.96	EDS
Total number of atoms	8477	wwPDB-VP
Average B, all atoms (Å <sup>2</sup> )	15.0	wwPDB-VP

Xtriage's analysis on translational NCS is as follows: *The largest off-origin peak in the Patterson function is 5.33% of the height of the origin peak. No significant pseudotranslation is detected.*

<sup>1</sup>Intensities estimated from amplitudes.

<sup>2</sup>Theoretical values of  $\langle |L| \rangle$ ,  $\langle L^2 \rangle$  for acentric reflections are 0.5, 0.333 respectively for untwinned datasets, and 0.375, 0.2 for perfectly twinned datasets.

## 5 Model quality [i](#)

### 5.1 Standard geometry [i](#)

Bond lengths and bond angles in the following residue types are not validated in this section: EPE

The Z score for a bond length (or angle) is the number of standard deviations the observed value is removed from the expected value. A bond length (or angle) with  $|Z| > 5$  is considered an outlier worth inspection. RMSZ is the root-mean-square of all Z scores of the bond lengths (or angles).

Mol	Chain	Bond lengths		Bond angles	
		RMSZ	$\# Z  > 5$	RMSZ	$\# Z  > 5$
1	A	0.28	0/3722	0.73	7/5067 (0.1%)
1	B	0.29	0/3722	0.74	6/5067 (0.1%)
All	All	0.29	0/7444	0.74	13/10134 (0.1%)

There are no bond length outliers.

All (13) bond angle outliers are listed below:

Mol	Chain	Res	Type	Atoms	Z	Observed(°)	Ideal(°)
1	B	102	ARG	NE-CZ-NH1	-15.99	112.30	120.30
1	B	102	ARG	NE-CZ-NH2	15.30	127.95	120.30
1	A	194	ARG	NE-CZ-NH2	-15.14	112.73	120.30
1	A	194	ARG	NE-CZ-NH1	14.95	127.78	120.30
1	B	194	ARG	NE-CZ-NH1	-14.12	113.24	120.30
1	B	194	ARG	NE-CZ-NH2	13.91	127.26	120.30
1	A	102	ARG	NE-CZ-NH2	-13.09	113.75	120.30
1	A	102	ARG	NE-CZ-NH1	13.03	126.81	120.30
1	A	194	ARG	CD-NE-CZ	8.00	134.80	123.60
1	B	194	ARG	CD-NE-CZ	7.75	134.45	123.60
1	B	102	ARG	CD-NE-CZ	7.64	134.30	123.60
1	A	202	SER	N-CA-CB	7.39	121.58	110.50
1	A	102	ARG	CD-NE-CZ	7.01	133.42	123.60

There are no chirality outliers.

There are no planarity outliers.

### 5.2 Too-close contacts [i](#)

In the following table, the Non-H and H(model) columns list the number of non-hydrogen atoms and hydrogen atoms in the chain respectively. The H(added) column lists the number of hydrogen



atoms added and optimized by MolProbity. The Clashes column lists the number of clashes within the asymmetric unit, whereas Symm-Clashes lists symmetry related clashes.

Mol	Chain	Non-H	H(model)	H(added)	Clashes	Symm-Clashes
1	A	3649	0	3648	55	0
1	B	3649	0	3648	49	0
2	A	15	0	17	9	0
2	B	15	0	17	1	0
3	A	608	0	0	28	0
3	B	541	0	0	19	0
All	All	8477	0	7330	111	0

The all-atom clashscore is defined as the number of clashes found per 1000 atoms (including hydrogen atoms). The all-atom clashscore for this structure is 8.

All (111) close contacts within the same asymmetric unit are listed below, sorted by their clash magnitude.

Atom-1	Atom-2	Interatomic distance (Å)	Clash overlap (Å)
1:A:488:MET:SD	3:A:2428:HOH:O	2.12	1.05
1:B:488:MET:SD	3:B:3437:HOH:O	2.13	1.04
2:A:2001:EPE:H61	3:A:2432:HOH:O	1.65	0.96
2:A:2001:EPE:H31	3:A:2199:HOH:O	1.74	0.85
1:A:492:ASP:HB3	3:A:2558:HOH:O	1.78	0.83
1:A:331:GLU:HG3	3:A:2344:HOH:O	1.78	0.83
1:B:430:ARG:HD3	3:B:3230:HOH:O	1.87	0.74
1:A:448:ASP:HB3	1:A:509:LYS:HD3	1.71	0.72
1:B:448:ASP:HB3	1:B:509:LYS:HD3	1.70	0.72
1:A:86:ARG:HD2	3:A:2313:HOH:O	1.89	0.72
1:B:331:GLU:HG3	3:B:3354:HOH:O	1.91	0.70
1:A:309:ARG:HG3	3:A:2571:HOH:O	1.90	0.70
1:A:430:ARG:HD3	3:A:2218:HOH:O	1.92	0.70
2:B:3001:EPE:N1	3:B:3441:HOH:O	2.27	0.68
1:B:430:ARG:CD	3:B:3230:HOH:O	2.40	0.68
2:A:2001:EPE:H51	3:A:2335:HOH:O	1.95	0.67
1:A:333:ALA:HB2	1:A:488:MET:CE	2.26	0.66
1:B:333:ALA:HB2	1:B:488:MET:CE	2.26	0.65
1:A:430:ARG:CD	3:A:2218:HOH:O	2.42	0.65
1:B:332:GLN:HG2	3:B:3004:HOH:O	1.97	0.64
1:A:256:PHE:CZ	2:A:2001:EPE:H62	2.33	0.64
1:A:332:GLN:HG2	3:A:2594:HOH:O	1.99	0.63
1:B:86:ARG:HD2	3:B:3323:HOH:O	1.99	0.62
1:B:445:HIS:HD2	3:B:3182:HOH:O	1.82	0.61
1:A:329:LEU:O	1:A:488:MET:HE1	2.01	0.61

*Continued on next page...*

*Continued from previous page...*

Atom-1	Atom-2	Interatomic distance (Å)	Clash overlap (Å)
1:A:492:ASP:HB2	3:A:2358:HOH:O	2.01	0.60
2:A:2001:EPE:H32	3:A:2601:HOH:O	2.01	0.59
1:A:327:PRO:HB2	1:A:328:PRO:HD3	1.85	0.59
1:A:47:GLU:H	1:A:213:ASN:HD21	1.50	0.59
1:A:333:ALA:HB2	1:A:488:MET:HE3	1.85	0.59
1:A:445:HIS:HD2	3:A:2170:HOH:O	1.86	0.58
1:B:327:PRO:HB2	1:B:328:PRO:HD3	1.85	0.58
1:B:47:GLU:H	1:B:213:ASN:HD21	1.51	0.58
1:B:360:ARG:HG3	3:B:3232:HOH:O	2.04	0.57
1:B:329:LEU:O	1:B:488:MET:HE1	2.05	0.57
1:B:333:ALA:HB2	1:B:488:MET:HE1	1.86	0.56
1:B:508:PRO:O	1:B:512:GLU:HG3	2.05	0.55
1:A:508:PRO:O	1:A:512:GLU:HG3	2.06	0.54
1:B:179:ILE:HD12	1:B:402:LEU:HD13	1.90	0.54
1:A:196:SER:OG	1:A:197:HIS:HD2	1.91	0.54
1:B:492:ASP:HB2	3:B:3368:HOH:O	2.08	0.54
1:B:333:ALA:HB2	1:B:488:MET:HE3	1.90	0.53
1:A:179:ILE:HD12	1:A:402:LEU:HD13	1.89	0.53
1:A:360:ARG:HG3	3:A:2220:HOH:O	2.08	0.53
1:B:196:SER:OG	1:B:197:HIS:HD2	1.90	0.53
1:A:107:ARG:NE	3:A:2566:HOH:O	2.38	0.52
1:B:364:LEU:HD13	1:B:410:GLU:HG2	1.92	0.52
1:B:65:THR:O	1:B:69:GLN:HG3	2.10	0.51
1:A:65:THR:O	1:A:69:GLN:HG3	2.10	0.51
1:A:222:GLU:HA	1:A:226:SER:HB2	1.92	0.51
1:A:333:ALA:HB2	1:A:488:MET:HE1	1.92	0.51
1:A:364:LEU:HD13	1:A:410:GLU:HG2	1.93	0.51
1:B:462:ARG:HD2	3:B:3152:HOH:O	2.10	0.51
1:B:222:GLU:HA	1:B:226:SER:HB2	1.93	0.51
1:A:197:HIS:HE1	3:A:2219:HOH:O	1.94	0.50
1:A:531:THR:HA	3:A:2261:HOH:O	2.11	0.50
1:A:531:THR:HG23	3:A:2527:HOH:O	2.12	0.50
1:B:107:ARG:NH1	3:B:3542:HOH:O	2.34	0.49
1:B:197:HIS:HE1	3:B:3231:HOH:O	1.95	0.49
1:B:329:LEU:O	1:B:488:MET:CE	2.60	0.49
1:A:57:MET:HA	1:A:62:LEU:O	2.13	0.49
1:B:490:GLN:HG3	3:B:3174:HOH:O	2.12	0.49
1:A:329:LEU:O	1:A:488:MET:CE	2.60	0.48
1:B:368:LYS:O	1:B:372:GLU:HG3	2.13	0.48
1:A:368:LYS:O	1:A:372:GLU:HG3	2.13	0.48
1:B:420:PRO:O	1:B:424:ARG:HG3	2.14	0.48

*Continued on next page...*

*Continued from previous page...*

Atom-1	Atom-2	Interatomic distance (Å)	Clash overlap (Å)
1:B:430:ARG:HD2	3:B:3230:HOH:O	2.10	0.48
1:A:430:ARG:HD2	3:A:2218:HOH:O	2.09	0.48
1:A:256:PHE:CD1	2:A:2001:EPE:H91	2.49	0.47
1:B:57:MET:HA	1:B:62:LEU:O	2.13	0.47
1:A:420:PRO:O	1:A:424:ARG:HG3	2.14	0.47
1:B:149:TYR:CE2	1:B:153:ARG:HD2	2.50	0.47
1:A:47:GLU:H	1:A:213:ASN:ND2	2.13	0.46
1:A:149:TYR:CE2	1:A:153:ARG:HD2	2.50	0.46
1:A:256:PHE:CE1	2:A:2001:EPE:H62	2.50	0.46
1:A:462:ARG:HD2	3:A:2140:HOH:O	2.14	0.46
2:A:2001:EPE:H92	3:A:2432:HOH:O	2.17	0.45
1:A:106:ARG:HG3	1:A:111:LEU:HD21	1.99	0.45
1:A:131:MET:HB2	3:A:2257:HOH:O	2.16	0.45
1:B:47:GLU:H	1:B:213:ASN:ND2	2.14	0.45
1:A:490:GLN:HG3	3:A:2162:HOH:O	2.16	0.45
1:A:98:GLU:O	1:A:102:ARG:HG2	2.17	0.45
1:B:451:VAL:HA	1:B:499:LEU:O	2.18	0.44
1:A:200:CYS:HG	1:A:229:CYS:HG	1.65	0.44
1:B:194:ARG:NH2	3:B:3445:HOH:O	2.46	0.44
1:A:488:MET:HE3	1:A:488:MET:HB2	1.89	0.44
1:B:102:ARG:HD3	1:B:102:ARG:HA	1.67	0.43
1:B:106:ARG:HG3	1:B:111:LEU:HD21	1.99	0.43
1:A:451:VAL:HA	1:A:499:LEU:O	2.18	0.43
1:B:488:MET:HB2	1:B:488:MET:HE3	1.86	0.43
1:A:108:ASP:HB2	3:A:2589:HOH:O	2.17	0.43
1:A:167:LEU:N	1:A:167:LEU:HD23	2.34	0.42
1:B:373:ARG:NH1	3:B:3335:HOH:O	2.45	0.42
1:B:167:LEU:HD23	1:B:167:LEU:N	2.34	0.42
1:B:531:THR:HA	3:B:3273:HOH:O	2.18	0.42
1:B:313:ILE:HD11	1:B:513:MET:CE	2.50	0.42
1:A:103:ASP:O	1:A:107:ARG:HG3	2.20	0.41
1:B:149:TYR:HD1	1:B:152:ARG:NH2	2.18	0.41
1:A:313:ILE:HD11	1:A:513:MET:CE	2.50	0.41
1:A:107:ARG:NH2	3:A:2566:HOH:O	2.52	0.41
2:A:2001:EPE:C6	3:A:2432:HOH:O	2.43	0.41
1:B:103:ASP:O	1:B:107:ARG:HG3	2.20	0.41
1:B:373:ARG:CZ	3:B:3005:HOH:O	2.68	0.41
1:A:244:GLY:O	1:A:288:THR:HA	2.21	0.41
1:B:192:PRO:HD3	1:B:208:VAL:HG13	2.03	0.41
1:B:380:ALA:HB1	1:B:381:PRO:HD2	2.03	0.41
1:B:389:ILE:O	1:B:393:GLN:HG3	2.20	0.41

*Continued on next page...*

*Continued from previous page...*

Atom-1	Atom-2	Interatomic distance (Å)	Clash overlap (Å)
1:A:309:ARG:CZ	3:A:2571:HOH:O	2.69	0.40
1:B:422:TYR:OH	1:B:426:ARG:HD3	2.21	0.40
1:A:149:TYR:HD1	1:A:152:ARG:NH2	2.18	0.40
1:A:389:ILE:O	1:A:393:GLN:HG3	2.21	0.40

There are no symmetry-related clashes.

## 5.3 Torsion angles [i](#)

### 5.3.1 Protein backbone [i](#)

In the following table, the Percentiles column shows the percent Ramachandran outliers of the chain as a percentile score with respect to all X-ray entries followed by that with respect to entries of similar resolution.

The Analysed column shows the number of residues for which the backbone conformation was analysed, and the total number of residues.

Mol	Chain	Analysed	Favoured	Allowed	Outliers	Percentiles	
1	A	483/503 (96%)	466 (96%)	17 (4%)	0	100	100
1	B	483/503 (96%)	465 (96%)	17 (4%)	1 (0%)	47	21
All	All	966/1006 (96%)	931 (96%)	34 (4%)	1 (0%)	51	23

All (1) Ramachandran outliers are listed below:

Mol	Chain	Res	Type
1	B	203	SER

### 5.3.2 Protein sidechains [i](#)

In the following table, the Percentiles column shows the percent sidechain outliers of the chain as a percentile score with respect to all X-ray entries followed by that with respect to entries of similar resolution.

The Analysed column shows the number of residues for which the sidechain conformation was analysed, and the total number of residues.

Mol	Chain	Analysed	Rotameric	Outliers	Percentiles	
1	A	366/379 (97%)	364 (100%)	2 (0%)	88	74

*Continued on next page...*

*Continued from previous page...*

Mol	Chain	Analysed	Rotameric	Outliers	Percentiles	
1	B	366/379 (97%)	364 (100%)	2 (0%)	88	74
All	All	732/758 (97%)	728 (100%)	4 (0%)	88	74

All (4) residues with a non-rotameric sidechain are listed below:

Mol	Chain	Res	Type
1	A	253	PRO
1	A	309	ARG
1	B	253	PRO
1	B	309	ARG

Some sidechains can be flipped to improve hydrogen bonding and reduce clashes. All (12) such sidechains are listed below:

Mol	Chain	Res	Type
1	A	197	HIS
1	A	213	ASN
1	A	376	ASN
1	A	398	GLN
1	A	445	HIS
1	A	490	GLN
1	B	197	HIS
1	B	213	ASN
1	B	306	GLN
1	B	398	GLN
1	B	445	HIS
1	B	490	GLN

### 5.3.3 RNA ⓘ

There are no RNA molecules in this entry.

## 5.4 Non-standard residues in protein, DNA, RNA chains ⓘ

There are no non-standard protein/DNA/RNA residues in this entry.

## 5.5 Carbohydrates ⓘ

There are no carbohydrates in this entry.

## 5.6 Ligand geometry

2 ligands are modelled in this entry.

In the following table, the Counts columns list the number of bonds (or angles) for which Mogul statistics could be retrieved, the number of bonds (or angles) that are observed in the model and the number of bonds (or angles) that are defined in the Chemical Component Dictionary. The Link column lists molecule types, if any, to which the group is linked. The Z score for a bond length (or angle) is the number of standard deviations the observed value is removed from the expected value. A bond length (or angle) with  $|Z| > 2$  is considered an outlier worth inspection. RMSZ is the root-mean-square of all Z scores of the bond lengths (or angles).

Mol	Type	Chain	Res	Link	Bond lengths			Bond angles		
					Counts	RMSZ	# Z  > 2	Counts	RMSZ	# Z  > 2
2	EPE	B	3001	-	15,15,15	2.02	5 (33%)	18,20,20	3.60	8 (44%)
2	EPE	A	2001	-	15,15,15	1.65	4 (26%)	18,20,20	2.99	6 (33%)

In the following table, the Chirals column lists the number of chiral outliers, the number of chiral centers analysed, the number of these observed in the model and the number defined in the Chemical Component Dictionary. Similar counts are reported in the Torsion and Rings columns. '-' means no outliers of that kind were identified.

Mol	Type	Chain	Res	Link	Chirals	Torsions	Rings
2	EPE	B	3001	-	-	1/9/19/19	0/1/1/1
2	EPE	A	2001	-	-	1/9/19/19	0/1/1/1

All (9) bond length outliers are listed below:

Mol	Chain	Res	Type	Atoms	Z	Observed(Å)	Ideal(Å)
2	B	3001	EPE	C2-N1	4.11	1.58	1.46
2	B	3001	EPE	C9-N1	3.30	1.55	1.47
2	B	3001	EPE	O2S-S	3.19	1.54	1.45
2	A	2001	EPE	C9-N1	2.88	1.54	1.47
2	A	2001	EPE	C6-N1	2.84	1.54	1.46
2	B	3001	EPE	C10-S	2.77	1.81	1.77
2	A	2001	EPE	O2S-S	2.64	1.52	1.45
2	A	2001	EPE	C10-S	2.53	1.81	1.77
2	B	3001	EPE	C6-N1	2.42	1.53	1.46

All (14) bond angle outliers are listed below:

Mol	Chain	Res	Type	Atoms	Z	Observed(°)	Ideal(°)
2	B	3001	EPE	O1S-S-C10	-9.64	95.31	106.92
2	B	3001	EPE	O2S-S-C10	9.04	117.80	106.92

*Continued on next page...*

*Continued from previous page...*

Mol	Chain	Res	Type	Atoms	Z	Observed(°)	Ideal(°)
2	A	2001	EPE	O2S-S-C10	7.82	116.34	106.92
2	A	2001	EPE	O1S-S-C10	-7.38	98.03	106.92
2	A	2001	EPE	C3-C2-N1	-3.47	103.53	110.64
2	B	3001	EPE	C3-C2-N1	-3.41	103.65	110.64
2	A	2001	EPE	C9-N1-C6	-3.40	102.53	111.23
2	A	2001	EPE	C7-N4-C5	-2.74	104.23	111.23
2	B	3001	EPE	C9-N1-C6	-2.69	104.34	111.23
2	B	3001	EPE	C7-N4-C5	-2.65	104.46	111.23
2	B	3001	EPE	C5-C6-N1	-2.59	105.32	110.64
2	B	3001	EPE	C6-C5-N4	2.52	115.81	110.64
2	B	3001	EPE	C9-N1-C2	2.36	117.28	111.23
2	A	2001	EPE	C9-N1-C2	2.10	116.60	111.23

There are no chirality outliers.

All (2) torsion outliers are listed below:

Mol	Chain	Res	Type	Atoms
2	B	3001	EPE	C10-C9-N1-C2
2	A	2001	EPE	N4-C7-C8-O8

There are no ring outliers.

2 monomers are involved in 10 short contacts:

Mol	Chain	Res	Type	Clashes	Symm-Clashes
2	B	3001	EPE	1	0
2	A	2001	EPE	9	0

## 5.7 Other polymers [i](#)

There are no such residues in this entry.

## 5.8 Polymer linkage issues [i](#)

There are no chain breaks in this entry.

## 6 Fit of model and data ⓘ

### 6.1 Protein, DNA and RNA chains ⓘ

In the following table, the column labelled ‘#RSRZ> 2’ contains the number (and percentage) of RSRZ outliers, followed by percent RSRZ outliers for the chain as percentile scores relative to all X-ray entries and entries of similar resolution. The OWAB column contains the minimum, median, 95<sup>th</sup> percentile and maximum values of the occupancy-weighted average B-factor per residue. The column labelled ‘Q< 0.9’ lists the number of (and percentage) of residues with an average occupancy less than 0.9.

Mol	Chain	Analysed	<RSRZ>	#RSRZ>2	OWAB(Å <sup>2</sup> )	Q<0.9
1	A	487/503 (96%)	0.09	13 (2%) 54 54	5, 11, 23, 44	0
1	B	487/503 (96%)	0.03	20 (4%) 37 37	5, 11, 23, 44	0
All	All	974/1006 (96%)	0.06	33 (3%) 45 44	5, 11, 23, 44	0

All (33) RSRZ outliers are listed below:

Mol	Chain	Res	Type	RSRZ
1	B	531	THR	12.9
1	A	531	THR	8.3
1	B	42	PRO	5.5
1	A	468	PHE	4.6
1	A	42	PRO	4.4
1	B	383	ARG	4.0
1	B	468	PHE	3.7
1	B	80	ARG	3.7
1	A	383	ARG	3.5
1	B	415	ALA	3.1
1	B	530	ASP	3.1
1	B	292	PRO	3.0
1	B	528	HIS	2.7
1	B	296	VAL	2.7
1	A	309	ARG	2.7
1	B	309	ARG	2.7
1	B	463	SER	2.7
1	A	80	ARG	2.7
1	B	295	ALA	2.6
1	A	360	ARG	2.6
1	B	293	GLY	2.5
1	B	110	ARG	2.4
1	B	462	ARG	2.4
1	A	467	ASP	2.4

*Continued on next page...*



*Continued from previous page...*

Mol	Chain	Res	Type	RSRZ
1	A	530	ASP	2.4
1	B	360	ARG	2.3
1	B	469	PRO	2.2
1	A	463	SER	2.2
1	A	528	HIS	2.2
1	B	108	ASP	2.2
1	B	529	PHE	2.1
1	A	61	GLU	2.1
1	A	324	ARG	2.1

## 6.2 Non-standard residues in protein, DNA, RNA chains [i](#)

There are no non-standard protein/DNA/RNA residues in this entry.

## 6.3 Carbohydrates [i](#)

There are no carbohydrates in this entry.

## 6.4 Ligands [i](#)

In the following table, the Atoms column lists the number of modelled atoms in the group and the number defined in the chemical component dictionary. The B-factors column lists the minimum, median, 95<sup>th</sup> percentile and maximum values of B factors of atoms in the group. The column labelled 'Q<0.9' lists the number of atoms with occupancy less than 0.9.

Mol	Type	Chain	Res	Atoms	RSCC	RSR	B-factors( $\text{\AA}^2$ )	Q<0.9
2	EPE	B	3001	15/15	0.85	0.22	19,21,25,26	0
2	EPE	A	2001	15/15	0.88	0.28	19,24,26,27	0

## 6.5 Other polymers [i](#)

There are no such residues in this entry.