



wwPDB X-ray Structure Validation Summary Report ⓘ

May 21, 2020 – 09:22 am BST

PDB ID : 4M3Q
Title : Crystal structure of the catalytic domain of the proto-oncogene tyrosine-protein kinase MER in complex with inhibitor UNC1917
Authors : Zhang, W.; Zhang, D.; Stashko, M.A.; DeRyckere, D.; Hunter, D.; Kireev, D.B.; Miley, M.; Cummings, C.; Lee, M.; Norris-Drouin, J.; Stewart, W.M.; Sather, S.; Zhou, Y.; Kirkpatrick, G.; Machius, M.; Janzen, W.P.; Earp, H.S.; Graham, D.K.; Frye, S.; Wang, X.
Deposited on : 2013-08-06
Resolution : 2.72 Å(reported)

This is a wwPDB X-ray Structure Validation Summary Report for a publicly released PDB entry.

We welcome your comments at validation@mail.wwpdb.org

A user guide is available at

<https://www.wwpdb.org/validation/2017/XrayValidationReportHelp>

with specific help available everywhere you see the ⓘ symbol.

The following versions of software and data (see [references ⓘ](#)) were used in the production of this report:

MolProbity : 4.02b-467
Mogul : 1.8.5 (274361), CSD as541be (2020)
Xtriage (Phenix) : 1.13
EDS : 2.11
buster-report : 1.1.7 (2018)
Percentile statistics : 20191225.v01 (using entries in the PDB archive December 25th 2019)
Refmac : 5.8.0158
CCP4 : 7.0.044 (Gargrove)
Ideal geometry (proteins) : Engh & Huber (2001)
Ideal geometry (DNA, RNA) : Parkinson et al. (1996)
Validation Pipeline (wwPDB-VP) : 2.11

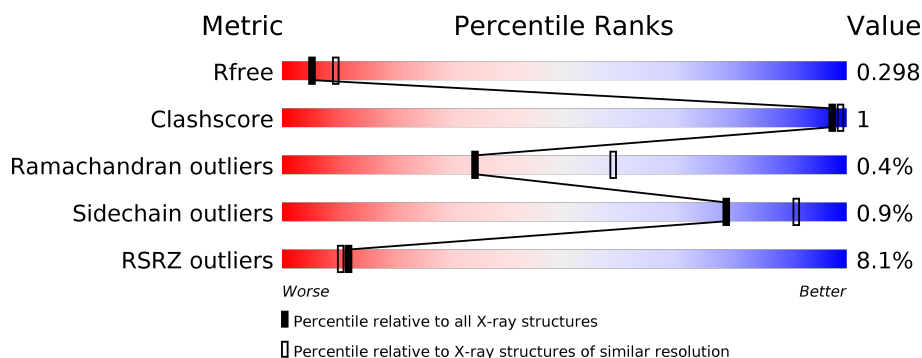
1 Overall quality at a glance

The following experimental techniques were used to determine the structure:

X-RAY DIFFRACTION

The reported resolution of this entry is 2.72 Å.

Percentile scores (ranging between 0-100) for global validation metrics of the entry are shown in the following graphic. The table shows the number of entries on which the scores are based.



Metric	Whole archive (#Entries)	Similar resolution (#Entries, resolution range(Å))
R_{free}	130704	3359 (2.74-2.70)
Clashscore	141614	3686 (2.74-2.70)
Ramachandran outliers	138981	3622 (2.74-2.70)
Sidechain outliers	138945	3623 (2.74-2.70)
RSRZ outliers	127900	3276 (2.74-2.70)

The table below summarises the geometric issues observed across the polymeric chains and their fit to the electron density. The red, orange, yellow and green segments on the lower bar indicate the fraction of residues that contain outliers for ≥ 3 , 2, 1 and 0 types of geometric quality criteria respectively. A grey segment represents the fraction of residues that are not modelled. The numeric value for each fraction is indicated below the corresponding segment, with a dot representing fractions $\leq 5\%$. The upper red bar (where present) indicates the fraction of residues that have poor fit to the electron density. The numeric value is given above the bar.

Mol	Chain	Length	Quality of chain
1	A	313	<div> <div>6%</div> <div> <div></div> <div>75%</div> <div>•</div> <div>22%</div> </div> </div>
1	B	313	<div> <div>7%</div> <div> <div></div> <div>75%</div> <div>•</div> <div>25%</div> </div> </div>

The following table lists non-polymeric compounds, carbohydrate monomers and non-standard residues in protein, DNA, RNA chains that are outliers for geometric or electron-density-fit criteria:

Mol	Type	Chain	Res	Chirality	Geometry	Clashes	Electron density
2	CL	A	904	-	-	X	-

2 Entry composition

There are 5 unique types of molecules in this entry. The entry contains 7899 atoms, of which 3975 are hydrogens and 0 are deuteriums.

In the tables below, the ZeroOcc column contains the number of atoms modelled with zero occupancy, the AltConf column contains the number of residues with at least one atom in alternate conformation and the Trace column contains the number of residues modelled with at most 2 atoms.

- Molecule 1 is a protein called Tyrosine-protein kinase Mer.

Mol	Chain	Residues	Atoms						ZeroOcc	AltConf	Trace
1	A	243	Total	C	H	N	O	S	0	0	0
			3937	1257	1980	326	355	19			
1	B	236	Total	C	H	N	O	S	0	0	0
			3844	1229	1941	317	338	19			

There are 36 discrepancies between the modelled and reference sequences:

Chain	Residue	Modelled	Actual	Comment	Reference
A	552	MET	-	EXPRESSION TAG	UNP Q12866
A	553	GLY	-	EXPRESSION TAG	UNP Q12866
A	554	SER	-	EXPRESSION TAG	UNP Q12866
A	555	SER	-	EXPRESSION TAG	UNP Q12866
A	556	HIS	-	EXPRESSION TAG	UNP Q12866
A	557	HIS	-	EXPRESSION TAG	UNP Q12866
A	558	HIS	-	EXPRESSION TAG	UNP Q12866
A	559	HIS	-	EXPRESSION TAG	UNP Q12866
A	560	HIS	-	EXPRESSION TAG	UNP Q12866
A	561	HIS	-	EXPRESSION TAG	UNP Q12866
A	562	SER	-	EXPRESSION TAG	UNP Q12866
A	563	SER	-	EXPRESSION TAG	UNP Q12866
A	564	GLY	-	EXPRESSION TAG	UNP Q12866
A	565	LEU	-	EXPRESSION TAG	UNP Q12866
A	566	VAL	-	EXPRESSION TAG	UNP Q12866
A	567	PRO	-	EXPRESSION TAG	UNP Q12866
A	568	ARG	-	EXPRESSION TAG	UNP Q12866
A	569	GLY	-	EXPRESSION TAG	UNP Q12866
B	552	MET	-	EXPRESSION TAG	UNP Q12866
B	553	GLY	-	EXPRESSION TAG	UNP Q12866
B	554	SER	-	EXPRESSION TAG	UNP Q12866
B	555	SER	-	EXPRESSION TAG	UNP Q12866
B	556	HIS	-	EXPRESSION TAG	UNP Q12866
B	557	HIS	-	EXPRESSION TAG	UNP Q12866
B	558	HIS	-	EXPRESSION TAG	UNP Q12866

Continued on next page...

Continued from previous page...

Chain	Residue	Modelled	Actual	Comment	Reference
B	559	HIS	-	EXPRESSION TAG	UNP Q12866
B	560	HIS	-	EXPRESSION TAG	UNP Q12866
B	561	HIS	-	EXPRESSION TAG	UNP Q12866
B	562	SER	-	EXPRESSION TAG	UNP Q12866
B	563	SER	-	EXPRESSION TAG	UNP Q12866
B	564	GLY	-	EXPRESSION TAG	UNP Q12866
B	565	LEU	-	EXPRESSION TAG	UNP Q12866
B	566	VAL	-	EXPRESSION TAG	UNP Q12866
B	567	PRO	-	EXPRESSION TAG	UNP Q12866
B	568	ARG	-	EXPRESSION TAG	UNP Q12866
B	569	GLY	-	EXPRESSION TAG	UNP Q12866

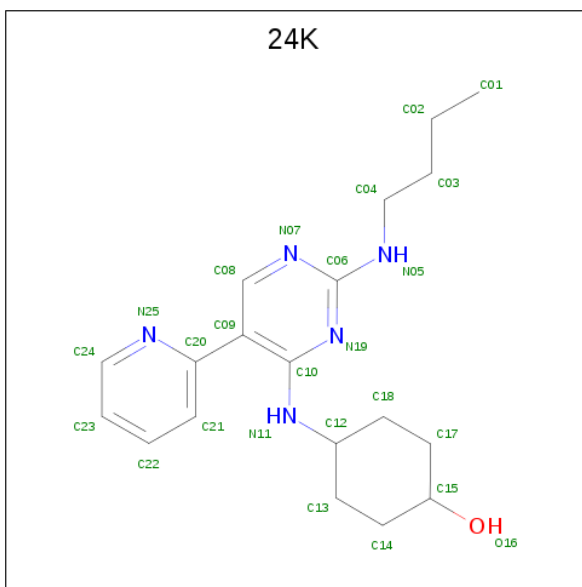
- Molecule 2 is CHLORIDE ION (three-letter code: CL) (formula: Cl).

Mol	Chain	Residues	Atoms	ZeroOcc	AltConf
2	B	3	Total Cl 3 3	0	0
2	A	4	Total Cl 4 4	0	0

- Molecule 3 is MAGNESIUM ION (three-letter code: MG) (formula: Mg).

Mol	Chain	Residues	Atoms	ZeroOcc	AltConf
3	A	1	Total Mg 1 1	0	0

- Molecule 4 is trans-4-{[2-(butylamino)-5-(pyridin-2-yl)pyrimidin-4-yl]amino}cyclohexanol (three-letter code: 24K) (formula: C₁₉H₂₇N₅O).



Mol	Chain	Residues	Atoms					ZeroOcc	AltConf
4	A	1	Total	C	H	N	O	0	0
			52	19	27	5	1		
4	B	1	Total	C	H	N	O	0	0
			52	19	27	5	1		

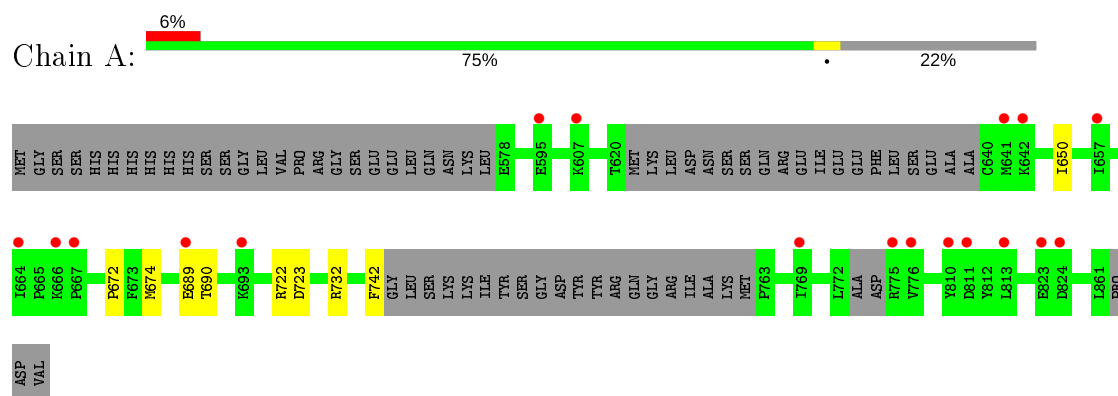
- Molecule 5 is water.

Mol	Chain	Residues	Atoms		ZeroOcc	AltConf
5	A	4	Total	O	0	0
			4	4		
5	B	2	Total	O	0	0
			2	2		

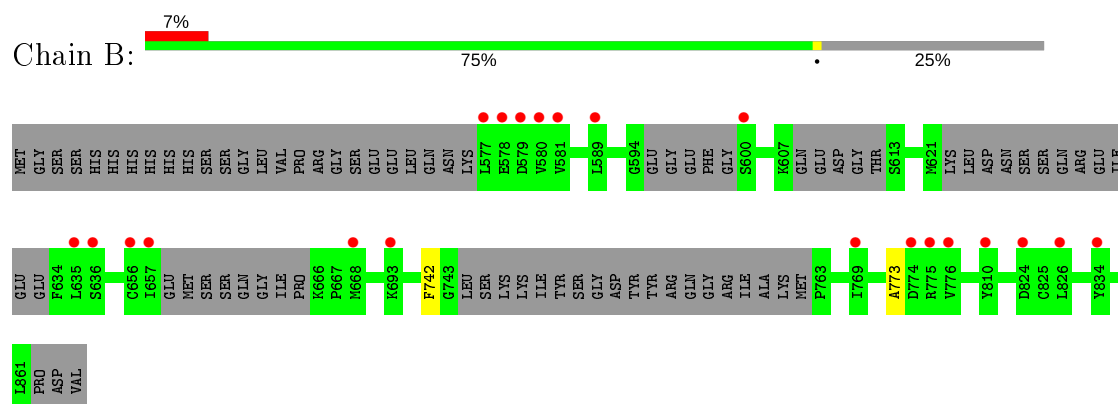
3 Residue-property plots [i](#)

These plots are drawn for all protein, RNA and DNA chains in the entry. The first graphic for a chain summarises the proportions of the various outlier classes displayed in the second graphic. The second graphic shows the sequence view annotated by issues in geometry and electron density. Residues are color-coded according to the number of geometric quality criteria for which they contain at least one outlier: green = 0, yellow = 1, orange = 2 and red = 3 or more. A red dot above a residue indicates a poor fit to the electron density ($RSRZ > 2$). Stretches of 2 or more consecutive residues without any outlier are shown as a green connector. Residues present in the sample, but not in the model, are shown in grey.

• Molecule 1: Tyrosine-protein kinase Mer



• Molecule 1: Tyrosine-protein kinase Mer



4 Data and refinement statistics

Property	Value	Source
Space group	P 1 21 1	Depositor
Cell constants a, b, c, α , β , γ	50.92Å 91.12Å 69.70Å 90.00° 99.81° 90.00°	Depositor
Resolution (Å)	34.74 – 2.72 34.74 – 2.72	Depositor EDS
% Data completeness (in resolution range)	83.6 (34.74-2.72) 79.4 (34.74-2.72)	Depositor EDS
R_{merge}	0.11	Depositor
R_{sym}	(Not available)	Depositor
$\langle I/\sigma(I) \rangle$ ¹	4.36 (at 2.72Å)	Xtriage
Refinement program	PHENIX (phenix.refine: dev_1439)	Depositor
R, R_{free}	0.243 , 0.296 0.249 , 0.298	Depositor DCC
R_{free} test set	1425 reflections (10.01%)	wwPDB-VP
Wilson B-factor (Å ²)	27.2	Xtriage
Anisotropy	0.285	Xtriage
Bulk solvent k_{sol} (e/Å ³), B_{sol} (Å ²)	0.39 , 46.9	EDS
L-test for twinning ²	$\langle L \rangle = 0.51$, $\langle L^2 \rangle = 0.34$	Xtriage
Estimated twinning fraction	No twinning to report.	Xtriage
F_o, F_c correlation	0.84	EDS
Total number of atoms	7899	wwPDB-VP
Average B, all atoms (Å ²)	45.0	wwPDB-VP

Xtriage's analysis on translational NCS is as follows: *The largest off-origin peak in the Patterson function is 7.46% of the height of the origin peak. No significant pseudotranslation is detected.*

¹Intensities estimated from amplitudes.

²Theoretical values of $\langle |L| \rangle$, $\langle L^2 \rangle$ for acentric reflections are 0.5, 0.333 respectively for untwinned datasets, and 0.375, 0.2 for perfectly twinned datasets.

5 Model quality

5.1 Standard geometry

Bond lengths and bond angles in the following residue types are not validated in this section: MG, 24K, CL

The Z score for a bond length (or angle) is the number of standard deviations the observed value is removed from the expected value. A bond length (or angle) with $|Z| > 5$ is considered an outlier worth inspection. RMSZ is the root-mean-square of all Z scores of the bond lengths (or angles).

Mol	Chain	Bond lengths		Bond angles	
		RMSZ	$\# Z > 5$	RMSZ	$\# Z > 5$
1	A	0.21	0/1998	0.37	0/2698
1	B	0.21	0/1941	0.37	0/2619
All	All	0.21	0/3939	0.37	0/5317

There are no bond length outliers.

There are no bond angle outliers.

There are no chirality outliers.

There are no planarity outliers.

5.2 Too-close contacts

In the following table, the Non-H and H(model) columns list the number of non-hydrogen atoms and hydrogen atoms in the chain respectively. The H(added) column lists the number of hydrogen atoms added and optimized by MolProbity. The Clashes column lists the number of clashes within the asymmetric unit, whereas Symm-Clashes lists symmetry related clashes.

Mol	Chain	Non-H	H(model)	H(added)	Clashes	Symm-Clashes
1	A	1957	1980	1971	6	0
1	B	1903	1941	1933	0	0
2	A	4	0	0	5	0
2	B	3	0	0	0	0
3	A	1	0	0	0	0
4	A	25	27	27	0	0
4	B	25	27	27	0	0
5	A	4	0	0	0	0
5	B	2	0	0	0	0
All	All	3924	3975	3958	6	0

The all-atom clashscore is defined as the number of clashes found per 1000 atoms (including

hydrogen atoms). The all-atom clashscore for this structure is 1.

The worst 5 of 6 close contacts within the same asymmetric unit are listed below, sorted by their clash magnitude.

Atom-1	Atom-2	Interatomic distance (Å)	Clash overlap (Å)
1:A:732:ARG:NH1	2:A:904:CL:CL	2.55	0.75
1:A:672:PRO:HG2	2:A:904:CL:CL	2.52	0.46
1:A:732:ARG:NH2	2:A:904:CL:CL	2.88	0.44
1:A:689:GLU:O	1:A:690:THR:OG1	2.13	0.44
1:A:650:ILE:HA	2:A:904:CL:CL	2.57	0.41

There are no symmetry-related clashes.

5.3 Torsion angles [i](#)

5.3.1 Protein backbone [i](#)

In the following table, the Percentiles column shows the percent Ramachandran outliers of the chain as a percentile score with respect to all X-ray entries followed by that with respect to entries of similar resolution.

The Analysed column shows the number of residues for which the backbone conformation was analysed, and the total number of residues.

Mol	Chain	Analysed	Favoured	Allowed	Outliers	Percentiles	
1	A	235/313 (75%)	228 (97%)	6 (3%)	1 (0%)	34	58
1	B	224/313 (72%)	219 (98%)	4 (2%)	1 (0%)	34	58
All	All	459/626 (73%)	447 (97%)	10 (2%)	2 (0%)	34	58

All (2) Ramachandran outliers are listed below:

Mol	Chain	Res	Type
1	A	723	ASP
1	B	773	ALA

5.3.2 Protein sidechains [i](#)

In the following table, the Percentiles column shows the percent sidechain outliers of the chain as a percentile score with respect to all X-ray entries followed by that with respect to entries of similar resolution.

The Analysed column shows the number of residues for which the sidechain conformation was

analysed, and the total number of residues.

Mol	Chain	Analysed	Rotameric	Outliers	Percentiles	
1	A	220/280 (79%)	217 (99%)	3 (1%)	67	85
1	B	213/280 (76%)	212 (100%)	1 (0%)	88	95
All	All	433/560 (77%)	429 (99%)	4 (1%)	78	91

All (4) residues with a non-rotameric sidechain are listed below:

Mol	Chain	Res	Type
1	A	674	MET
1	A	722	ARG
1	A	742	PHE
1	B	742	PHE

Some sidechains can be flipped to improve hydrogen bonding and reduce clashes. All (1) such sidechains are listed below:

Mol	Chain	Res	Type
1	A	648	ASN

5.3.3 RNA [i](#)

There are no RNA molecules in this entry.

5.4 Non-standard residues in protein, DNA, RNA chains [i](#)

There are no non-standard protein/DNA/RNA residues in this entry.

5.5 Carbohydrates [i](#)

There are no carbohydrates in this entry.

5.6 Ligand geometry [i](#)

Of 10 ligands modelled in this entry, 8 are monoatomic - leaving 2 for Mogul analysis.

In the following table, the Counts columns list the number of bonds (or angles) for which Mogul statistics could be retrieved, the number of bonds (or angles) that are observed in the model and the number of bonds (or angles) that are defined in the Chemical Component Dictionary. The Link column lists molecule types, if any, to which the group is linked. The Z score for a bond

length (or angle) is the number of standard deviations the observed value is removed from the expected value. A bond length (or angle) with $|Z| > 2$ is considered an outlier worth inspection. RMSZ is the root-mean-square of all Z scores of the bond lengths (or angles).

Mol	Type	Chain	Res	Link	Bond lengths			Bond angles		
					Counts	RMSZ	# Z > 2	Counts	RMSZ	# Z > 2
4	24K	A	906	-	27,27,27	2.09	3 (11%)	33,35,35	2.14	13 (39%)
4	24K	B	904	-	27,27,27	2.06	3 (11%)	33,35,35	1.94	11 (33%)

In the following table, the Chirals column lists the number of chiral outliers, the number of chiral centers analysed, the number of these observed in the model and the number defined in the Chemical Component Dictionary. Similar counts are reported in the Torsion and Rings columns. '-' means no outliers of that kind were identified.

Mol	Type	Chain	Res	Link	Chirals	Torsions	Rings
4	24K	A	906	-	-	4/13/23/23	0/3/3/3
4	24K	B	904	-	-	5/13/23/23	0/3/3/3

The worst 5 of 6 bond length outliers are listed below:

Mol	Chain	Res	Type	Atoms	Z	Observed(Å)	Ideal(Å)
4	B	904	24K	C06-N05	7.94	1.46	1.34
4	A	906	24K	C06-N05	7.71	1.46	1.34
4	A	906	24K	C10-N11	6.76	1.45	1.35
4	B	904	24K	C10-N11	6.46	1.45	1.35
4	A	906	24K	C09-C20	-2.53	1.42	1.48

The worst 5 of 24 bond angle outliers are listed below:

Mol	Chain	Res	Type	Atoms	Z	Observed(°)	Ideal(°)
4	B	904	24K	N07-C06-N19	-6.77	120.13	126.55
4	A	906	24K	N07-C06-N19	-6.67	120.23	126.55
4	A	906	24K	C24-N25-C20	3.86	122.64	117.23
4	A	906	24K	N05-C06-N07	3.69	122.75	117.22
4	B	904	24K	C24-N25-C20	3.65	122.36	117.23

There are no chirality outliers.

5 of 9 torsion outliers are listed below:

Mol	Chain	Res	Type	Atoms
4	B	904	24K	C03-C04-N05-C06
4	B	904	24K	C09-C10-N11-C12
4	B	904	24K	N19-C10-N11-C12

Continued on next page...

Continued from previous page...

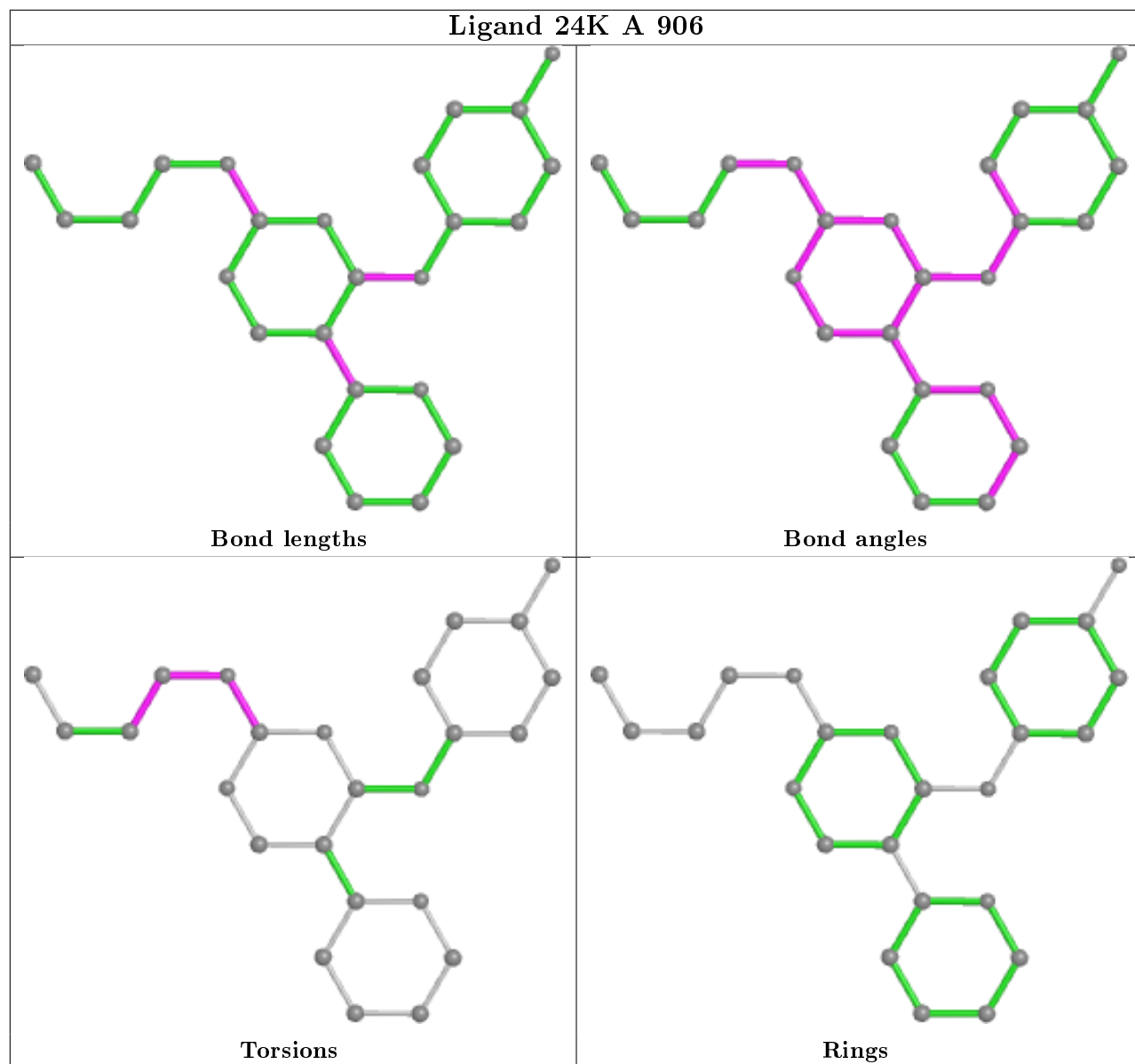
Mol	Chain	Res	Type	Atoms
4	B	904	24K	C18-C12-N11-C10
4	A	906	24K	C02-C03-C04-N05

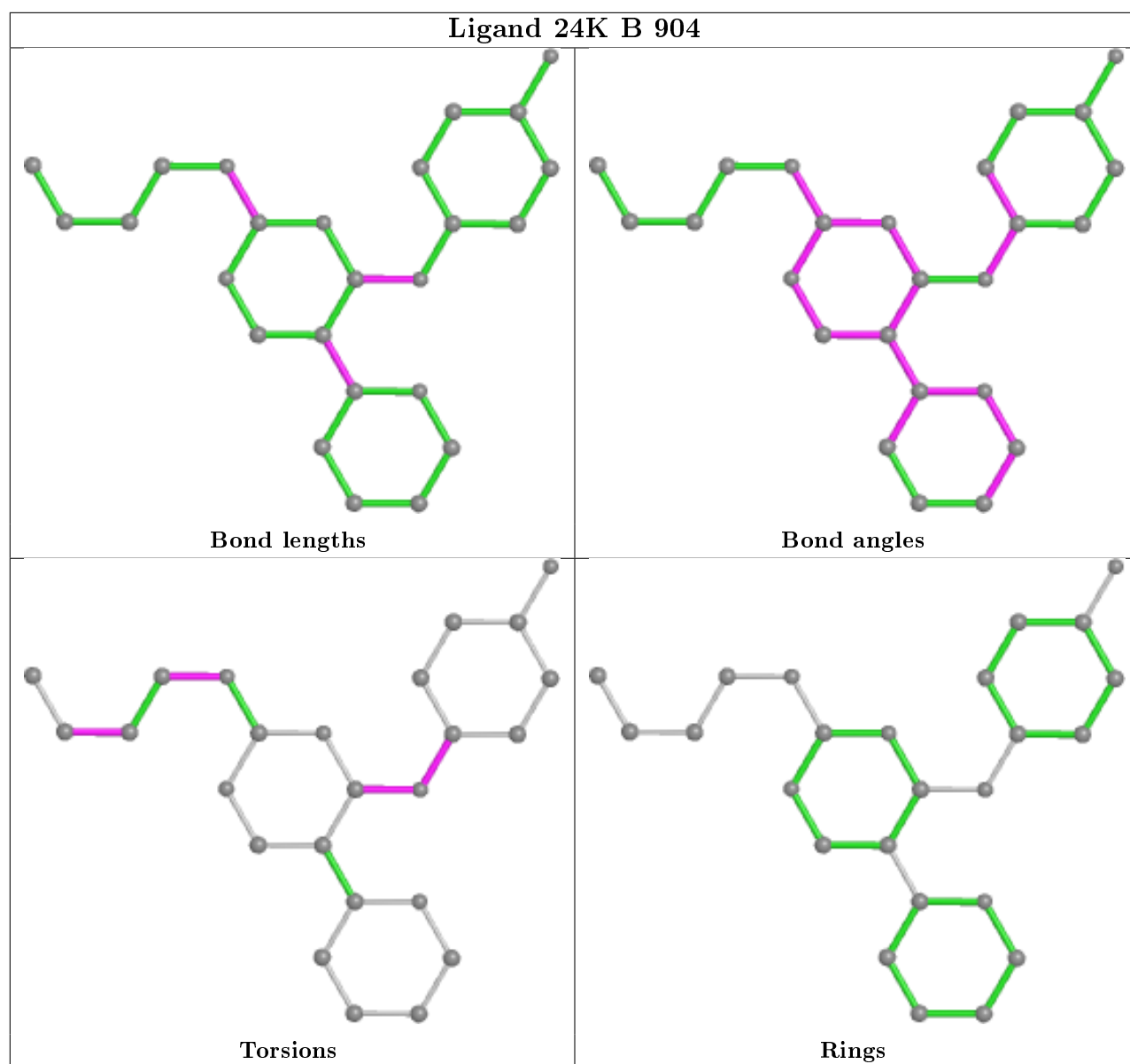
There are no ring outliers.

No monomer is involved in short contacts.

The following is a two-dimensional graphical depiction of Mogul quality analysis of bond lengths, bond angles, torsion angles, and ring geometry for all instances of the Ligand of Interest. In addition, ligands with molecular weight > 250 and outliers as shown on the validation Tables will also be included. For torsion angles, if less than 5% of the Mogul distribution of torsion angles is within 10 degrees of the torsion angle in question, then that torsion angle is considered an outlier. Any bond that is central to one or more torsion angles identified as an outlier by Mogul will be highlighted in the graph. For rings, the root-mean-square deviation (RMSD) between the ring in question and similar rings identified by Mogul is calculated over all ring torsion angles. If the average RMSD is greater than 60 degrees and the minimal RMSD between the ring in question and any Mogul-identified rings is also greater than 60 degrees, then that ring is considered an outlier. The outliers are highlighted in purple. The color gray indicates Mogul did not find sufficient equivalents in the CSD to analyse the geometry.

Ligand 24K A 906





5.7 Other polymers [i](#)

There are no such residues in this entry.

5.8 Polymer linkage issues [i](#)

There are no chain breaks in this entry.

6 Fit of model and data [i](#)

6.1 Protein, DNA and RNA chains [i](#)

In the following table, the column labelled ‘#RSRZ> 2’ contains the number (and percentage) of RSRZ outliers, followed by percent RSRZ outliers for the chain as percentile scores relative to all X-ray entries and entries of similar resolution. The OWAB column contains the minimum, median, 95th percentile and maximum values of the occupancy-weighted average B-factor per residue. The column labelled ‘Q< 0.9’ lists the number of (and percentage) of residues with an average occupancy less than 0.9.

Mol	Chain	Analysed	<RSRZ>	#RSRZ>2	OWAB(Å ²)	Q<0.9
1	A	243/313 (77%)	0.56	18 (7%) 14 13	16, 38, 76, 111	0
1	B	236/313 (75%)	0.58	21 (8%) 9 8	14, 36, 70, 110	0
All	All	479/626 (76%)	0.57	39 (8%) 12 10	14, 38, 73, 111	0

The worst 5 of 39 RSRZ outliers are listed below:

Mol	Chain	Res	Type	RSRZ
1	A	642	LYS	4.9
1	B	775	ARG	4.5
1	B	577	LEU	4.4
1	B	635	LEU	4.0
1	A	824	ASP	3.6

6.2 Non-standard residues in protein, DNA, RNA chains [i](#)

There are no non-standard protein/DNA/RNA residues in this entry.

6.3 Carbohydrates [i](#)

There are no carbohydrates in this entry.

6.4 Ligands [i](#)

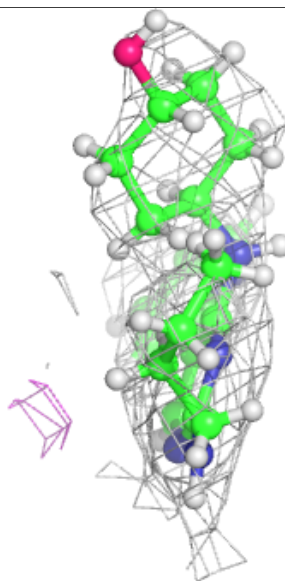
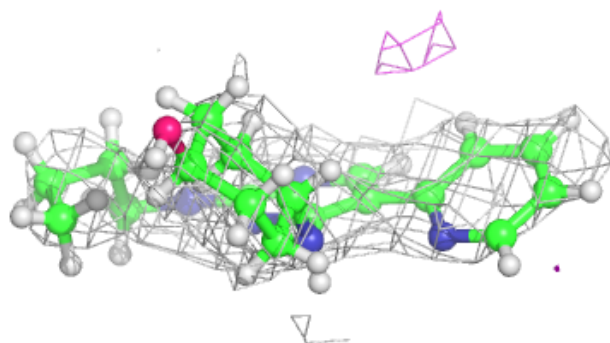
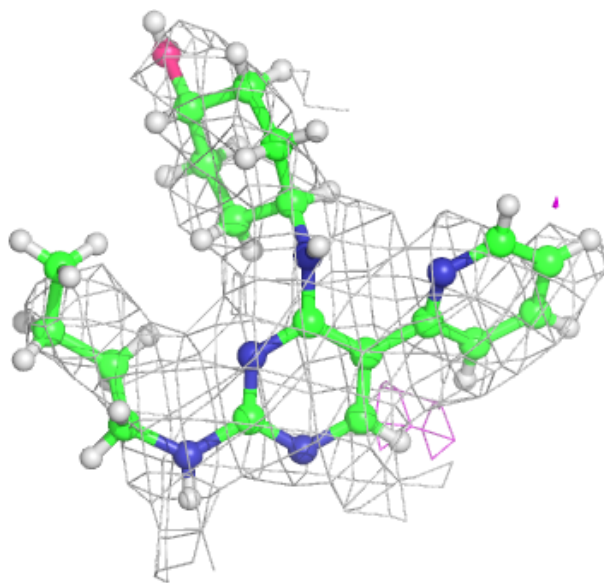
In the following table, the Atoms column lists the number of modelled atoms in the group and the number defined in the chemical component dictionary. The B-factors column lists the minimum, median, 95th percentile and maximum values of B factors of atoms in the group. The column labelled ‘Q< 0.9’ lists the number of atoms with occupancy less than 0.9.

Mol	Type	Chain	Res	Atoms	RSCC	RSR	B-factors(\AA^2)	Q<0.9
2	CL	A	904	1/1	0.64	0.19	75,75,75,75	0
4	24K	B	904	25/25	0.84	0.28	41,52,65,66	0
2	CL	B	903	1/1	0.90	0.22	66,66,66,66	0
3	MG	A	905	1/1	0.93	0.18	18,18,18,18	0
4	24K	A	906	25/25	0.93	0.20	12,32,48,51	0
2	CL	A	903	1/1	0.96	0.11	46,46,46,46	0
2	CL	B	902	1/1	0.96	0.19	44,44,44,44	0
2	CL	A	902	1/1	0.96	0.08	30,30,30,30	0
2	CL	B	901	1/1	0.98	0.07	26,26,26,26	0
2	CL	A	901	1/1	0.99	0.07	28,28,28,28	0

The following is a graphical depiction of the model fit to experimental electron density of all instances of the Ligand of Interest. In addition, ligands with molecular weight > 250 and outliers as shown on the geometry validation Tables will also be included. Each fit is shown from different orientation to approximate a three-dimensional view.

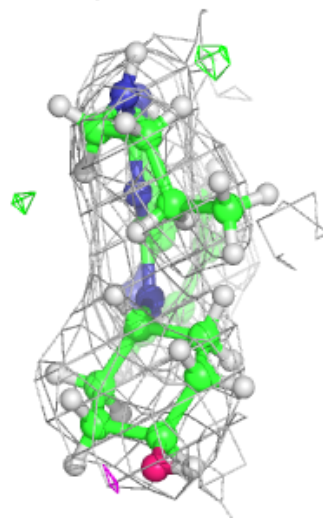
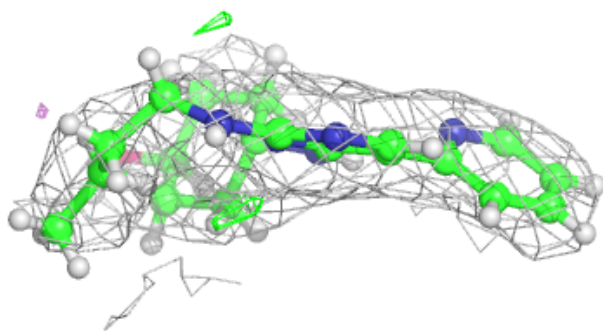
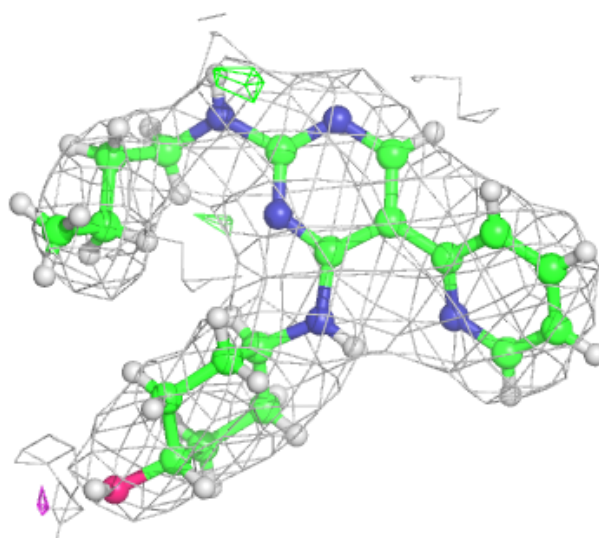
Electron density around 24K B 904:

$2mF_o-DF_c$ (at 0.7 rmsd) in gray
 mF_o-DF_c (at 3 rmsd) in purple (negative)
and green (positive)



Electron density around 24K A 906:

2mF_o-DF_c (at 0.7 rmsd) in gray
mF_o-DF_c (at 3 rmsd) in purple (negative)
and green (positive)



6.5 Other polymers [i](#)

There are no such residues in this entry.