



Full wwPDB X-ray Structure Validation Report ⓘ

Oct 31, 2021 – 06:41 PM EDT

PDB ID : 3M50
Title : Structure of the 14-3-3/PMA2 complex stabilized by Epibestatin
Authors : Ottmann, C.; Rose, R.; Waldmann, H.
Deposited on : 2010-03-12
Resolution : 2.60 Å(reported)

This is a Full wwPDB X-ray Structure Validation Report for a publicly released PDB entry.

We welcome your comments at validation@mail.wwpdb.org

A user guide is available at

<https://www.wwpdb.org/validation/2017/XrayValidationReportHelp>

with specific help available everywhere you see the ⓘ symbol.

The following versions of software and data (see [references ⓘ](#)) were used in the production of this report:

MolProbity : 4.02b-467
Mogul : 1.8.5 (274361), CSD as541be (2020)
Xtriage (Phenix) : 1.13
EDS : 2.23.2
buster-report : 1.1.7 (2018)
Percentile statistics : 20191225.v01 (using entries in the PDB archive December 25th 2019)
Refmac : 5.8.0158
CCP4 : 7.0.044 (Gargrove)
Ideal geometry (proteins) : Engh & Huber (2001)
Ideal geometry (DNA, RNA) : Parkinson et al. (1996)
Validation Pipeline (wwPDB-VP) : 2.23.2

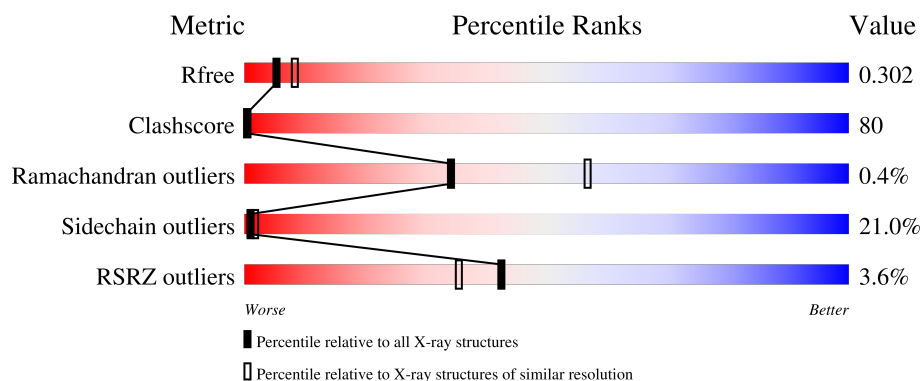
1 Overall quality at a glance

The following experimental techniques were used to determine the structure:

X-RAY DIFFRACTION

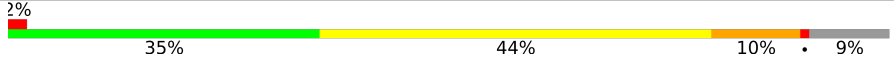
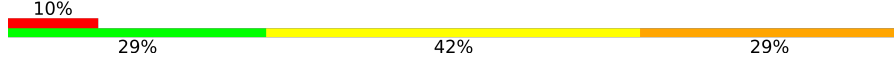
The reported resolution of this entry is 2.60 Å.

Percentile scores (ranging between 0-100) for global validation metrics of the entry are shown in the following graphic. The table shows the number of entries on which the scores are based.



Metric	Whole archive (#Entries)	Similar resolution (#Entries, resolution range(Å))
R_{free}	130704	3163 (2.60-2.60)
Clashscore	141614	3518 (2.60-2.60)
Ramachandran outliers	138981	3455 (2.60-2.60)
Sidechain outliers	138945	3455 (2.60-2.60)
RSRZ outliers	127900	3104 (2.60-2.60)

The table below summarises the geometric issues observed across the polymeric chains and their fit to the electron density. The red, orange, yellow and green segments of the lower bar indicate the fraction of residues that contain outliers for ≥ 3 , 2, 1 and 0 types of geometric quality criteria respectively. A grey segment represents the fraction of residues that are not modelled. The numeric value for each fraction is indicated below the corresponding segment, with a dot representing fractions $\leq 5\%$. The upper red bar (where present) indicates the fraction of residues that have poor fit to the electron density. The numeric value is given above the bar.

Mol	Chain	Length	Quality of chain
1	A	240	
2	P	31	

The following table lists non-polymeric compounds, carbohydrate monomers and non-standard residues in protein, DNA, RNA chains that are outliers for geometric or electron-density-fit criteria:

Mol	Type	Chain	Res	Chirality	Geometry	Clashes	Electron density
3	EBT	A	241	-	-	X	-

2 Entry composition

There are 4 unique types of molecules in this entry. The entry contains 2131 atoms, of which 0 are hydrogens and 0 are deuteriums.

In the tables below, the ZeroOcc column contains the number of atoms modelled with zero occupancy, the AltConf column contains the number of residues with at least one atom in alternate conformation and the Trace column contains the number of residues modelled with at most 2 atoms.

- Molecule 1 is a protein called 14-3-3-like protein C.

Mol	Chain	Residues	Atoms					ZeroOcc	AltConf	Trace
1	A	218	Total	C	N	O	S	0	2	0
			1757	1107	295	348	7			

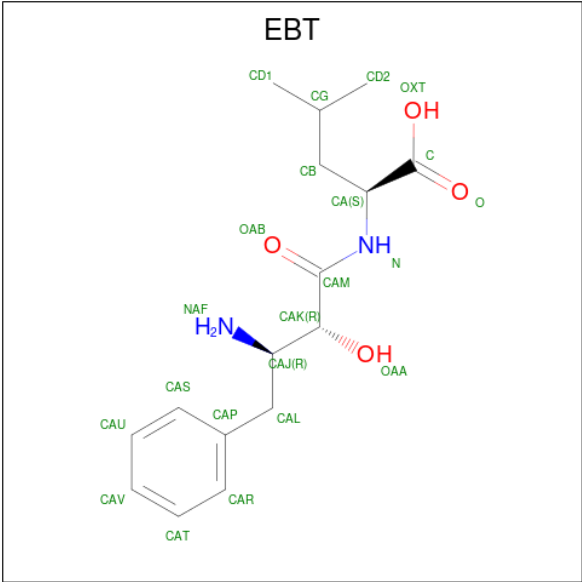
- Molecule 2 is a protein called N.plumbaginifolia H⁺-translocating ATPase mRNA.

Mol	Chain	Residues	Atoms				ZeroOcc	AltConf	Trace
2	P	31	Total	C	N	O	0	0	0
			252	159	46	47			

There are 4 discrepancies between the modelled and reference sequences:

Chain	Residue	Modelled	Actual	Comment	Reference
P	926	ARG	-	expression tag	UNP Q42932
P	938	ALA	SER	engineered mutation	UNP Q42932
P	955	ASP	THR	engineered mutation	UNP Q42932
P	956	ILE	VAL	engineered mutation	UNP Q42932

- Molecule 3 is N-[(2R,3R)-3-amino-2-hydroxy-4-phenylbutanoyl]-L-leucine (three-letter code: EBT) (formula: C₁₆H₂₄N₂O₄).



Mol	Chain	Residues	Atoms				ZeroOcc	AltConf
3	A	1	Total	C	N	O	0	0
			22	16	2	4		

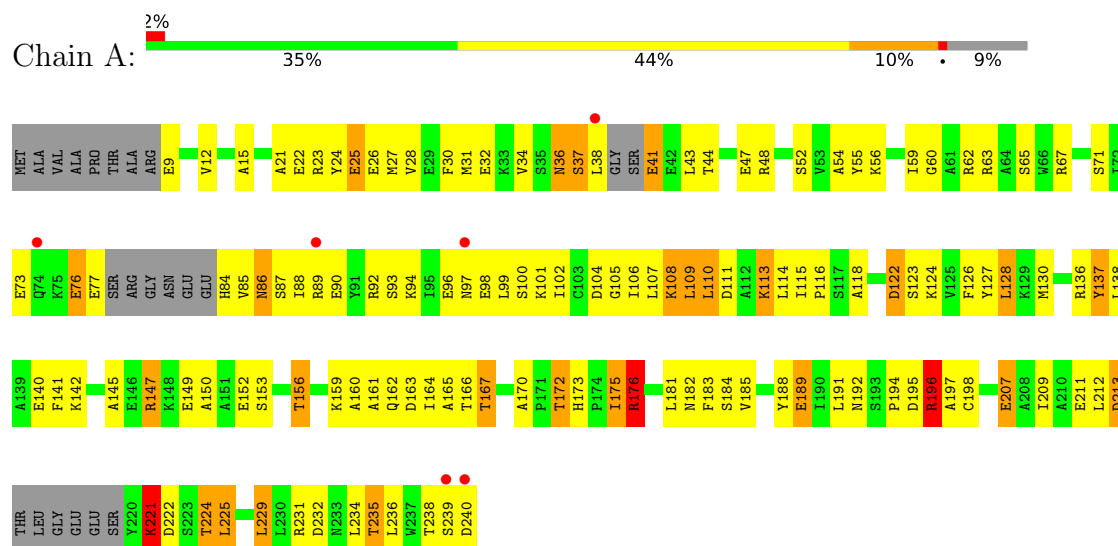
- Molecule 4 is water.

Mol	Chain	Residues	Atoms		ZeroOcc	AltConf
4	A	86	Total	O	0	0
			86	86		
4	P	14	Total	O	0	0
			14	14		

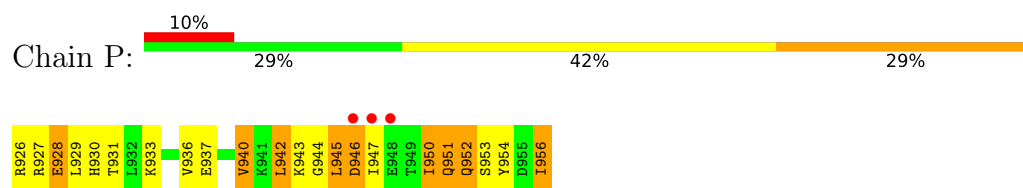
3 Residue-property plots [i](#)

These plots are drawn for all protein, RNA, DNA and oligosaccharide chains in the entry. The first graphic for a chain summarises the proportions of the various outlier classes displayed in the second graphic. The second graphic shows the sequence view annotated by issues in geometry and electron density. Residues are color-coded according to the number of geometric quality criteria for which they contain at least one outlier: green = 0, yellow = 1, orange = 2 and red = 3 or more. A red dot above a residue indicates a poor fit to the electron density ($RSRZ > 2$). Stretches of 2 or more consecutive residues without any outlier are shown as a green connector. Residues present in the sample, but not in the model, are shown in grey.

• Molecule 1: 14-3-3-like protein C



• Molecule 2: N.plumbaginifolia H⁺-translocating ATPase mRNA



4 Data and refinement statistics

Property	Value	Source
Space group	I 41 2 2	Depositor
Cell constants a, b, c, α , β , γ	97.62Å 97.62Å 217.03Å 90.00° 90.00° 90.00°	Depositor
Resolution (Å)	44.51 – 2.60 42.80 – 2.60	Depositor EDS
% Data completeness (in resolution range)	100.0 (44.51-2.60) 99.8 (42.80-2.60)	Depositor EDS
R_{merge}	0.06	Depositor
R_{sym}	(Not available)	Depositor
$\langle I/\sigma(I) \rangle$ ¹	3.10 (at 2.61Å)	Xtriage
Refinement program	REFMAC	Depositor
R, R_{free}	0.255 , 0.324 0.248 , 0.302	Depositor DCC
R_{free} test set	828 reflections (5.00%)	wwPDB-VP
Wilson B-factor (Å ²)	60.9	Xtriage
Anisotropy	0.030	Xtriage
Bulk solvent k_{sol} (e/Å ³), B_{sol} (Å ²)	0.35 , 56.2	EDS
L-test for twinning ²	$\langle L \rangle = 0.49$, $\langle L^2 \rangle = 0.32$	Xtriage
Estimated twinning fraction	No twinning to report.	Xtriage
F_o, F_c correlation	0.92	EDS
Total number of atoms	2131	wwPDB-VP
Average B, all atoms (Å ²)	57.0	wwPDB-VP

Xtriage's analysis on translational NCS is as follows: *The largest off-origin peak in the Patterson function is 5.36% of the height of the origin peak. No significant pseudotranslation is detected.*

¹Intensities estimated from amplitudes.

²Theoretical values of $\langle |L| \rangle$, $\langle L^2 \rangle$ for acentric reflections are 0.5, 0.333 respectively for untwinned datasets, and 0.375, 0.2 for perfectly twinned datasets.

5 Model quality

5.1 Standard geometry

Bond lengths and bond angles in the following residue types are not validated in this section: EBT

The Z score for a bond length (or angle) is the number of standard deviations the observed value is removed from the expected value. A bond length (or angle) with $|Z| > 5$ is considered an outlier worth inspection. RMSZ is the root-mean-square of all Z scores of the bond lengths (or angles).

Mol	Chain	Bond lengths		Bond angles	
		RMSZ	$\# Z > 5$	RMSZ	$\# Z > 5$
1	A	0.99	2/1780 (0.1%)	1.07	5/2395 (0.2%)
2	P	0.81	0/254	0.88	0/340
All	All	0.97	2/2034 (0.1%)	1.05	5/2735 (0.2%)

All (2) bond length outliers are listed below:

Mol	Chain	Res	Type	Atoms	Z	Observed(Å)	Ideal(Å)
1	A	137	TYR	CD1-CE1	-5.72	1.30	1.39
1	A	207	GLU	CG-CD	-5.10	1.44	1.51

All (5) bond angle outliers are listed below:

Mol	Chain	Res	Type	Atoms	Z	Observed(°)	Ideal(°)
1	A	221	LYS	CB-CA-C	-7.87	94.66	110.40
1	A	176	ARG	NE-CZ-NH1	-6.74	116.93	120.30
1	A	221	LYS	N-CA-C	6.43	128.37	111.00
1	A	222	ASP	N-CA-C	-6.26	94.11	111.00
1	A	196	ARG	NE-CZ-NH1	5.83	123.22	120.30

There are no chirality outliers.

There are no planarity outliers.

5.2 Too-close contacts

In the following table, the Non-H and H(model) columns list the number of non-hydrogen atoms and hydrogen atoms in the chain respectively. The H(added) column lists the number of hydrogen atoms added and optimized by MolProbity. The Clashes column lists the number of clashes within the asymmetric unit, whereas Symm-Clashes lists symmetry-related clashes.

Mol	Chain	Non-H	H(model)	H(added)	Clashes	Symm-Clashes
1	A	1757	0	1739	277	0
2	P	252	0	263	49	0
3	A	22	0	23	20	0
4	A	86	0	0	108	0
4	P	14	0	0	18	0
All	All	2131	0	2025	326	0

The all-atom clashscore is defined as the number of clashes found per 1000 atoms (including hydrogen atoms). The all-atom clashscore for this structure is 80.

All (326) close contacts within the same asymmetric unit are listed below, sorted by their clash magnitude.

Atom-1	Atom-2	Interatomic distance (Å)	Clash overlap (Å)
1:A:108:LYS:HZ2	1:A:108:LYS:N	1.04	1.45
1:A:108:LYS:H	1:A:108:LYS:NZ	1.18	1.40
1:A:108:LYS:H	1:A:108:LYS:CE	1.43	1.32
1:A:56[A]:LYS:HD2	3:A:241:EBT:O	1.27	1.31
1:A:104:ASP:O	1:A:108:LYS:HE2	1.21	1.31
1:A:104:ASP:O	1:A:108:LYS:CE	1.77	1.31
1:A:99:LEU:HA	4:A:313:HOH:O	1.27	1.30
2:P:956:ILE:HG23	4:P:60:HOH:O	1.18	1.29
1:A:160:ALA:CB	4:A:250:HOH:O	1.79	1.28
1:A:108:LYS:N	1:A:108:LYS:NZ	1.76	1.27
1:A:221:LYS:HD2	1:A:221:LYS:O	1.33	1.22
2:P:926:ARG:HG2	4:P:85:HOH:O	1.35	1.21
1:A:99:LEU:CA	4:A:313:HOH:O	1.78	1.21
1:A:140:GLU:HG3	4:A:302:HOH:O	1.38	1.19
1:A:73:GLU:OE1	1:A:92:ARG:NH1	1.76	1.19
1:A:90:GLU:HB2	4:A:314:HOH:O	1.38	1.19
1:A:96:GLU:O	4:A:310:HOH:O	1.60	1.18
1:A:172:THR:HG21	4:A:290:HOH:O	0.99	1.16
1:A:235:THR:HG22	4:A:334:HOH:O	1.01	1.16
1:A:163:ASP:O	1:A:167:THR:CG2	1.94	1.14
1:A:15:ALA:HB2	1:A:31:MET:HE2	1.21	1.14
1:A:56[A]:LYS:HE2	4:P:52:HOH:O	1.42	1.14
1:A:27:MET:HA	4:A:325:HOH:O	0.98	1.13
1:A:48:ARG:O	4:A:318:HOH:O	1.66	1.12
1:A:156:THR:HG21	4:A:323:HOH:O	0.95	1.12
2:P:926:ARG:CG	4:P:85:HOH:O	1.92	1.11
1:A:176:ARG:HH11	1:A:176:ARG:CG	1.61	1.11
1:A:189:GLU:HA	4:A:300:HOH:O	0.91	1.09
3:A:241:EBT:HG	4:A:258:HOH:O	1.52	1.09

Continued on next page...

Continued from previous page...

Atom-1	Atom-2	Interatomic distance (Å)	Clash overlap (Å)
1:A:221:LYS:O	1:A:221:LYS:CD	2.01	1.08
1:A:198:CYS:SG	4:A:301:HOH:O	2.12	1.08
1:A:160:ALA:HB2	4:A:250:HOH:O	1.45	1.07
1:A:176:ARG:HH11	1:A:176:ARG:HG2	1.11	1.07
1:A:104:ASP:O	1:A:108:LYS:NZ	1.86	1.07
2:P:951:GLN:HG3	2:P:951:GLN:O	1.53	1.06
1:A:231:ARG:NH1	4:A:247:HOH:O	1.88	1.06
1:A:44:THR:HG23	1:A:47:GLU:OE1	1.57	1.05
1:A:15:ALA:CB	1:A:31:MET:CE	2.34	1.04
1:A:232:ASP:OD2	2:P:927:ARG:NH1	1.89	1.04
1:A:163:ASP:O	1:A:167:THR:HG22	1.56	1.03
1:A:90:GLU:CB	4:A:314:HOH:O	1.98	1.03
1:A:15:ALA:HB2	1:A:31:MET:CE	1.91	1.01
1:A:164:ILE:O	1:A:167:THR:HG23	1.61	1.01
1:A:56[A]:LYS:CD	3:A:241:EBT:O	2.10	0.99
1:A:108:LYS:HZ2	1:A:108:LYS:CA	1.75	0.99
1:A:86:ASN:O	4:A:314:HOH:O	1.81	0.99
1:A:108:LYS:HZ3	1:A:108:LYS:HB2	1.28	0.98
1:A:196:ARG:CG	4:A:257:HOH:O	2.12	0.97
1:A:153:SER:CA	4:A:328:HOH:O	2.12	0.97
1:A:196:ARG:NE	4:A:257:HOH:O	1.90	0.97
1:A:99:LEU:CB	4:A:313:HOH:O	2.02	0.96
1:A:108:LYS:H	1:A:108:LYS:HE3	1.30	0.96
1:A:153:SER:HA	4:A:328:HOH:O	1.63	0.96
1:A:138:LEU:O	4:A:333:HOH:O	1.84	0.95
2:P:928:GLU:H	2:P:928:GLU:CD	1.67	0.95
1:A:15:ALA:CB	1:A:31:MET:HE3	1.96	0.95
1:A:108:LYS:N	1:A:108:LYS:CE	2.23	0.94
1:A:188:TYR:O	4:A:300:HOH:O	1.63	0.94
1:A:27:MET:CA	4:A:325:HOH:O	1.64	0.93
1:A:159:LYS:O	4:A:252:HOH:O	1.86	0.92
1:A:43:LEU:CD2	1:A:48:ARG:HB2	1.98	0.92
1:A:43:LEU:HD21	1:A:48:ARG:CA	2.00	0.92
2:P:928:GLU:OE2	2:P:929:LEU:N	2.02	0.91
1:A:24:TYR:HD1	1:A:27:MET:CE	1.82	0.91
1:A:108:LYS:NZ	1:A:108:LYS:HB2	1.84	0.91
1:A:26:GLU:O	4:A:325:HOH:O	1.87	0.90
1:A:173:HIS:CE1	1:A:175:ILE:HG13	2.05	0.90
1:A:173:HIS:CE1	1:A:175:ILE:CG1	2.55	0.89
1:A:195:ASP:CB	4:A:279:HOH:O	2.20	0.89
2:P:950:ILE:HG22	4:P:46:HOH:O	1.73	0.89

Continued on next page...

Continued from previous page...

Atom-1	Atom-2	Interatomic distance (Å)	Clash overlap (Å)
1:A:147:ARG:HG2	1:A:147:ARG:HH21	1.37	0.88
1:A:213:ASP:HB2	4:A:283:HOH:O	1.74	0.88
1:A:44:THR:CG2	1:A:47:GLU:OE1	2.22	0.88
1:A:176:ARG:HG2	1:A:176:ARG:NH1	1.86	0.87
1:A:213:ASP:CG	4:A:283:HOH:O	2.10	0.87
1:A:108:LYS:NZ	1:A:108:LYS:CB	2.38	0.87
2:P:926:ARG:CB	4:P:85:HOH:O	2.19	0.87
1:A:73:GLU:CD	1:A:92:ARG:NH1	2.28	0.86
1:A:25[B]:GLU:CD	1:A:25[B]:GLU:H	1.79	0.85
1:A:160:ALA:HB3	4:A:250:HOH:O	1.54	0.85
2:P:947:ILE:O	2:P:947:ILE:HD12	1.76	0.85
1:A:52:SER:HB3	4:A:318:HOH:O	1.74	0.85
1:A:104:ASP:C	1:A:108:LYS:HE2	1.96	0.84
1:A:90:GLU:CG	4:A:314:HOH:O	2.21	0.83
1:A:213:ASP:CB	4:A:283:HOH:O	2.26	0.83
1:A:160:ALA:HA	4:A:252:HOH:O	1.77	0.83
1:A:24:TYR:CD1	1:A:27:MET:HE2	2.13	0.83
1:A:160:ALA:CA	4:A:252:HOH:O	2.25	0.82
2:P:931:THR:HA	4:P:35:HOH:O	1.79	0.82
2:P:936:VAL:O	2:P:940:VAL:CG1	2.27	0.82
1:A:195:ASP:CG	4:A:279:HOH:O	2.17	0.82
1:A:163:ASP:O	1:A:167:THR:HG21	1.79	0.82
1:A:24:TYR:HD1	1:A:27:MET:HE2	1.43	0.81
1:A:30:PHE:O	1:A:34:VAL:HG23	1.80	0.81
1:A:73:GLU:CD	1:A:92:ARG:HH12	1.84	0.81
2:P:956:ILE:CG2	2:P:956:ILE:O	2.28	0.81
1:A:147:ARG:HH21	1:A:147:ARG:CG	1.93	0.80
1:A:15:ALA:CB	1:A:31:MET:HE2	1.96	0.80
1:A:173:HIS:HE1	1:A:175:ILE:CG1	1.93	0.80
1:A:62:ARG:NH2	1:A:98:GLU:OE1	2.15	0.80
1:A:43:LEU:HD22	1:A:48:ARG:HB2	1.63	0.80
2:P:950:ILE:HG13	2:P:951:GLN:N	1.98	0.79
1:A:160:ALA:C	4:A:252:HOH:O	2.20	0.79
1:A:176:ARG:CG	1:A:176:ARG:NH1	2.38	0.78
1:A:142:LYS:NZ	4:A:315:HOH:O	1.87	0.78
1:A:140:GLU:N	4:A:302:HOH:O	2.13	0.77
1:A:231:ARG:NE	4:A:334:HOH:O	2.14	0.77
1:A:173:HIS:CE1	1:A:175:ILE:HG12	2.20	0.77
1:A:173:HIS:HE1	1:A:175:ILE:HG13	1.49	0.76
1:A:24:TYR:CD1	1:A:27:MET:CE	2.66	0.76
3:A:241:EBT:CG	4:A:258:HOH:O	2.17	0.76

Continued on next page...

Continued from previous page...

Atom-1	Atom-2	Interatomic distance (Å)	Clash overlap (Å)
2:P:928:GLU:OE2	2:P:928:GLU:N	2.19	0.75
1:A:156:THR:CG2	4:A:323:HOH:O	1.69	0.75
1:A:184:SER:O	4:A:303:HOH:O	2.01	0.75
2:P:926:ARG:HA	4:P:85:HOH:O	1.86	0.75
2:P:936:VAL:O	2:P:940:VAL:HG12	1.85	0.75
2:P:956:ILE:HG23	2:P:956:ILE:O	1.85	0.75
1:A:142:LYS:N	4:A:333:HOH:O	2.17	0.75
1:A:149:GLU:CB	4:A:264:HOH:O	2.34	0.74
2:P:956:ILE:O	4:P:60:HOH:O	2.04	0.74
1:A:43:LEU:HD21	1:A:48:ARG:N	2.02	0.73
1:A:24:TYR:HB2	4:A:266:HOH:O	1.87	0.73
1:A:21:ALA:HB1	4:A:294:HOH:O	1.88	0.72
1:A:108:LYS:N	1:A:108:LYS:HE3	1.92	0.72
1:A:92:ARG:O	1:A:96:GLU:HG3	1.88	0.72
1:A:110:LEU:HA	1:A:114:LEU:HB2	1.72	0.71
1:A:149:GLU:HB2	4:A:264:HOH:O	1.88	0.71
1:A:110:LEU:HD13	1:A:114:LEU:HD12	1.71	0.71
1:A:48:ARG:HD3	1:A:126:PHE:CE2	2.25	0.71
3:A:241:EBT:HD2B	2:P:956:ILE:CD1	2.20	0.71
1:A:56[B]:LYS:NZ	3:A:241:EBT:HB	2.06	0.70
1:A:141:PHE:N	4:A:333:HOH:O	1.59	0.69
1:A:38:LEU:HD22	1:A:41:GLU:HG3	1.73	0.69
2:P:950:ILE:CG2	4:P:46:HOH:O	2.34	0.69
1:A:12:VAL:HA	1:A:31:MET:HE1	1.73	0.69
1:A:111:ASP:O	1:A:116:PRO:HG2	1.91	0.69
1:A:97:ASN:CB	4:A:317:HOH:O	2.41	0.68
1:A:48:ARG:HD3	1:A:126:PHE:CD2	2.28	0.68
1:A:189:GLU:OE2	4:A:281:HOH:O	2.10	0.68
1:A:99:LEU:HD23	4:A:313:HOH:O	1.92	0.67
1:A:99:LEU:CD2	4:A:313:HOH:O	2.42	0.67
1:A:238:THR:HB	4:A:316:HOH:O	1.95	0.67
1:A:21:ALA:CB	4:A:294:HOH:O	2.43	0.66
1:A:38:LEU:O	1:A:41:GLU:HG2	1.94	0.66
1:A:108:LYS:NZ	1:A:108:LYS:CA	2.45	0.66
2:P:926:ARG:CA	4:P:85:HOH:O	2.40	0.66
1:A:43:LEU:HD21	1:A:48:ARG:CB	2.26	0.66
1:A:196:ARG:CD	4:A:257:HOH:O	2.32	0.66
2:P:933:LYS:HE3	2:P:952:GLN:O	1.96	0.65
1:A:149:GLU:CD	4:A:264:HOH:O	2.34	0.65
1:A:182:ASN:HD21	2:P:956:ILE:HG22	1.62	0.64
1:A:59:ILE:HG23	1:A:60:GLY:N	2.12	0.64

Continued on next page...

Continued from previous page...

Atom-1	Atom-2	Interatomic distance (Å)	Clash overlap (Å)
1:A:56[B]:LYS:HD3	3:A:241:EBT:HN	1.60	0.64
1:A:9:GLU:OE1	1:A:9:GLU:N	2.30	0.64
1:A:56[A]:LYS:HD2	3:A:241:EBT:C	2.23	0.64
2:P:951:GLN:O	2:P:951:GLN:CG	2.39	0.64
1:A:93:SER:OG	1:A:94:LYS:N	2.28	0.63
1:A:90:GLU:CD	4:A:305:HOH:O	2.36	0.63
1:A:149:GLU:CG	4:A:264:HOH:O	2.47	0.63
1:A:23:ARG:HG3	4:A:294:HOH:O	1.99	0.63
1:A:43:LEU:CD2	1:A:48:ARG:CB	2.72	0.63
3:A:241:EBT:HD2B	2:P:956:ILE:HD11	1.81	0.63
1:A:122:ASP:OD1	1:A:122:ASP:N	2.19	0.63
1:A:43:LEU:HD21	1:A:48:ARG:HA	1.80	0.62
1:A:24:TYR:CB	4:A:266:HOH:O	2.46	0.62
1:A:38:LEU:HD11	1:A:47:GLU:OE2	2.00	0.62
1:A:48:ARG:NE	4:A:326:HOH:O	2.23	0.62
1:A:59:ILE:CG2	1:A:60:GLY:N	2.62	0.62
3:A:241:EBT:HD1B	2:P:930:HIS:ND1	2.14	0.62
1:A:24:TYR:CD2	4:A:266:HOH:O	2.51	0.62
1:A:44:THR:OG1	1:A:47:GLU:OE1	2.18	0.62
1:A:12:VAL:O	1:A:15:ALA:HB3	2.00	0.62
1:A:156:THR:CB	4:A:323:HOH:O	2.26	0.62
1:A:196:ARG:HG2	4:A:257:HOH:O	1.91	0.61
1:A:221:LYS:HD2	1:A:221:LYS:C	2.17	0.61
1:A:43:LEU:HD21	1:A:48:ARG:HB2	1.81	0.61
1:A:56[B]:LYS:HD3	3:A:241:EBT:N	2.16	0.61
1:A:52:SER:CB	4:A:318:HOH:O	2.28	0.60
1:A:15:ALA:HB1	1:A:31:MET:HE3	1.83	0.60
1:A:100:SER:O	1:A:104:ASP:HB2	2.02	0.60
1:A:97:ASN:N	4:A:317:HOH:O	1.92	0.59
1:A:163:ASP:N	4:A:252:HOH:O	2.07	0.59
2:P:946:ASP:N	2:P:946:ASP:OD1	2.29	0.59
1:A:136:ARG:HD2	4:A:243:HOH:O	2.02	0.59
2:P:952:GLN:CB	4:P:44:HOH:O	2.49	0.59
1:A:211:GLU:O	1:A:211:GLU:HG2	2.03	0.59
1:A:15:ALA:HB3	1:A:31:MET:HE3	1.83	0.59
1:A:221:LYS:HA	1:A:224:THR:OG1	2.03	0.58
1:A:22:GLU:CD	4:A:249:HOH:O	2.42	0.58
1:A:56[B]:LYS:HZ2	3:A:241:EBT:HB	1.68	0.58
1:A:62:ARG:HB2	1:A:99:LEU:HD21	1.86	0.58
3:A:241:EBT:HD2B	2:P:956:ILE:HD12	1.86	0.58
1:A:52:SER:O	1:A:56[A]:LYS:HB2	2.04	0.57

Continued on next page...

Continued from previous page...

Atom-1	Atom-2	Interatomic distance (Å)	Clash overlap (Å)
1:A:44:THR:CB	1:A:47:GLU:OE1	2.52	0.57
1:A:111:ASP:O	1:A:116:PRO:CG	2.53	0.57
1:A:140:GLU:O	4:A:270:HOH:O	2.17	0.57
1:A:105:GLY:O	1:A:108:LYS:NZ	2.37	0.57
2:P:947:ILE:HD12	2:P:947:ILE:C	2.24	0.56
1:A:164:ILE:C	1:A:167:THR:HG23	2.26	0.56
1:A:32:GLU:O	1:A:36:ASN:OD1	2.24	0.56
1:A:55:TYR:CE1	1:A:102:ILE:HG23	2.42	0.55
1:A:194:PRO:O	1:A:197:ALA:N	2.39	0.55
1:A:150:ALA:C	4:A:306:HOH:O	2.45	0.55
1:A:56[B]:LYS:HZ3	3:A:241:EBT:CB	2.20	0.55
2:P:928:GLU:CD	2:P:928:GLU:N	2.40	0.54
1:A:56[A]:LYS:HZ2	3:A:241:EBT:C	2.21	0.54
1:A:153:SER:C	4:A:328:HOH:O	2.39	0.54
1:A:236:LEU:HG	1:A:236:LEU:O	2.07	0.54
1:A:36:ASN:O	1:A:37:SER:C	2.46	0.54
1:A:142:LYS:CE	4:A:315:HOH:O	2.45	0.53
1:A:90:GLU:CA	4:A:305:HOH:O	2.56	0.53
1:A:24:TYR:HD2	4:A:266:HOH:O	1.89	0.53
1:A:56[A]:LYS:CD	4:P:52:HOH:O	2.55	0.53
1:A:189:GLU:HG2	4:A:268:HOH:O	2.08	0.53
1:A:25[B]:GLU:CD	1:A:25[B]:GLU:N	2.58	0.53
1:A:145:ALA:O	1:A:149:GLU:HG3	2.09	0.52
1:A:207:GLU:HB2	4:A:277:HOH:O	2.09	0.52
2:P:926:ARG:N	2:P:928:GLU:OE1	2.43	0.52
1:A:90:GLU:HG3	4:A:314:HOH:O	2.01	0.52
1:A:76:GLU:OE2	1:A:76:GLU:HA	2.10	0.52
1:A:141:PHE:CE1	1:A:142:LYS:HD3	2.45	0.52
2:P:942:LEU:O	2:P:944:GLY:N	2.43	0.52
1:A:225:LEU:HD22	4:A:319:HOH:O	2.09	0.52
1:A:59:ILE:CD1	1:A:99:LEU:HD23	2.40	0.52
1:A:194:PRO:O	1:A:195:ASP:C	2.47	0.52
1:A:25[A]:GLU:O	1:A:28:VAL:N	2.43	0.52
1:A:163:ASP:CB	4:A:252:HOH:O	2.58	0.51
2:P:936:VAL:O	2:P:940:VAL:HG13	2.08	0.51
2:P:926:ARG:NE	4:P:85:HOH:O	2.44	0.51
1:A:86:ASN:HA	1:A:89:ARG:HB3	1.92	0.51
1:A:153:SER:HB3	4:A:328:HOH:O	2.11	0.51
1:A:170:ALA:O	1:A:176:ARG:HD3	2.11	0.51
1:A:229:LEU:HG	2:P:954:TYR:HB3	1.91	0.51
1:A:141:PHE:CA	4:A:333:HOH:O	2.33	0.51

Continued on next page...

Continued from previous page...

Atom-1	Atom-2	Interatomic distance (Å)	Clash overlap (Å)
2:P:937:GLU:HA	4:P:3:HOH:O	2.11	0.50
1:A:27:MET:C	4:A:325:HOH:O	2.20	0.50
1:A:43:LEU:HD22	1:A:127:TYR:OH	2.12	0.50
1:A:239:SER:O	1:A:240:ASP:C	2.48	0.50
3:A:241:EBT:CD1	4:A:258:HOH:O	2.57	0.49
2:P:942:LEU:C	2:P:944:GLY:H	2.16	0.49
1:A:128:LEU:HB3	1:A:161:ALA:HB2	1.94	0.49
1:A:56[A]:LYS:CE	3:A:241:EBT:O	2.59	0.49
2:P:956:ILE:O	2:P:956:ILE:HG22	2.10	0.49
1:A:27:MET:HE3	1:A:54:ALA:HA	1.93	0.49
1:A:86:ASN:N	1:A:86:ASN:OD1	2.46	0.49
2:P:933:LYS:O	2:P:937:GLU:HG3	2.13	0.49
1:A:173:HIS:HE1	1:A:175:ILE:HG12	1.68	0.48
1:A:55:TYR:CD1	1:A:102:ILE:CG2	2.97	0.48
1:A:59:ILE:HD12	1:A:99:LEU:HD23	1.95	0.48
1:A:196:ARG:HG3	4:A:257:HOH:O	1.92	0.48
1:A:115:ILE:HB	1:A:116:PRO:HD3	1.95	0.48
1:A:163:ASP:HB2	4:A:252:HOH:O	2.13	0.47
1:A:147:ARG:CG	1:A:147:ARG:NH2	2.63	0.47
1:A:27:MET:CE	1:A:54:ALA:HA	2.45	0.47
1:A:48:ARG:HD3	1:A:126:PHE:CZ	2.49	0.47
1:A:98:GLU:O	1:A:102:ILE:HD12	2.15	0.47
1:A:38:LEU:O	1:A:41:GLU:N	2.48	0.47
1:A:209:ILE:C	1:A:211:GLU:H	2.17	0.47
1:A:52:SER:N	4:A:318:HOH:O	1.57	0.47
1:A:118:ALA:HB1	1:A:124:LYS:HG3	1.97	0.47
2:P:936:VAL:O	2:P:936:VAL:HG12	2.13	0.47
1:A:195:ASP:HB3	4:A:279:HOH:O	2.01	0.46
1:A:107:LEU:O	1:A:108:LYS:C	2.51	0.46
2:P:952:GLN:HB3	4:P:44:HOH:O	2.13	0.46
1:A:100:SER:O	1:A:104:ASP:CB	2.63	0.46
1:A:209:ILE:C	1:A:211:GLU:N	2.69	0.46
1:A:209:ILE:O	1:A:211:GLU:N	2.49	0.46
1:A:26:GLU:HG3	4:A:274:HOH:O	2.15	0.46
1:A:63:ARG:CZ	1:A:137:TYR:CE2	2.99	0.46
1:A:55:TYR:CZ	1:A:106:ILE:HB	2.51	0.45
1:A:176:ARG:HH11	1:A:176:ARG:HG3	1.68	0.45
1:A:189:GLU:CA	4:A:300:HOH:O	1.78	0.45
1:A:160:ALA:O	1:A:164:ILE:HG13	2.17	0.45
1:A:191:LEU:O	1:A:192:ASN:CB	2.64	0.45
3:A:241:EBT:CD2	4:A:258:HOH:O	2.59	0.45

Continued on next page...

Continued from previous page...

Atom-1	Atom-2	Interatomic distance (Å)	Clash overlap (Å)
2:P:928:GLU:OE2	2:P:928:GLU:CA	2.64	0.45
1:A:15:ALA:HB1	1:A:31:MET:CE	2.40	0.45
1:A:99:LEU:HB3	4:A:313:HOH:O	1.90	0.45
1:A:55:TYR:HD1	1:A:102:ILE:CG2	2.29	0.45
1:A:221:LYS:O	1:A:221:LYS:CG	2.60	0.45
1:A:48:ARG:CD	1:A:126:PHE:CE2	2.99	0.44
1:A:100:SER:N	4:A:310:HOH:O	1.90	0.44
2:P:950:ILE:HG13	2:P:951:GLN:H	1.75	0.44
1:A:118:ALA:CB	1:A:124:LYS:HG3	2.46	0.44
1:A:56[A]:LYS:NZ	3:A:241:EBT:O	2.50	0.44
1:A:104:ASP:CA	1:A:108:LYS:HE2	2.47	0.44
1:A:90:GLU:CB	4:A:305:HOH:O	2.65	0.44
1:A:107:LEU:O	1:A:110:LEU:HB2	2.17	0.44
1:A:24:TYR:CD1	1:A:27:MET:HE1	2.51	0.44
1:A:67:ARG:NH2	2:P:952:GLN:OE1	2.37	0.44
1:A:109:LEU:O	1:A:109:LEU:HD22	2.18	0.44
1:A:115:ILE:O	4:A:261:HOH:O	2.21	0.44
1:A:87:SER:O	1:A:88:ILE:C	2.55	0.44
1:A:105:GLY:C	1:A:108:LYS:HZ1	2.21	0.43
1:A:152:GLU:N	4:A:306:HOH:O	2.50	0.43
1:A:15:ALA:HB3	1:A:31:MET:CE	2.36	0.43
1:A:56[B]:LYS:HZ3	3:A:241:EBT:HB	1.74	0.43
1:A:92:ARG:O	1:A:96:GLU:N	2.46	0.43
1:A:150:ALA:CA	4:A:306:HOH:O	2.67	0.43
1:A:56[A]:LYS:HB2	1:A:56[A]:LYS:HE3	1.82	0.43
2:P:952:GLN:CA	4:P:44:HOH:O	2.66	0.43
1:A:25[A]:GLU:O	1:A:26:GLU:C	2.55	0.43
1:A:24:TYR:N	4:A:266:HOH:O	2.23	0.43
1:A:84:HIS:O	1:A:85:VAL:C	2.56	0.43
1:A:175:ILE:HG12	1:A:175:ILE:H	1.70	0.43
1:A:153:SER:O	4:A:328:HOH:O	2.21	0.43
1:A:97:ASN:HB2	4:A:317:HOH:O	2.12	0.42
2:P:952:GLN:HA	4:P:44:HOH:O	2.20	0.42
1:A:172:THR:CB	4:A:290:HOH:O	2.47	0.42
1:A:181:LEU:O	1:A:185:VAL:HG23	2.17	0.42
1:A:26:GLU:C	4:A:325:HOH:O	2.29	0.42
1:A:38:LEU:O	1:A:41:GLU:OE2	2.38	0.42
1:A:108:LYS:CE	1:A:108:LYS:CA	2.92	0.42
1:A:62:ARG:HB2	1:A:99:LEU:CD2	2.50	0.42
1:A:113:LYS:HZ2	1:A:113:LYS:HG2	1.31	0.42
2:P:945:LEU:HD12	2:P:945:LEU:HA	1.75	0.41

Continued on next page...

Continued from previous page...

Atom-1	Atom-2	Interatomic distance (Å)	Clash overlap (Å)
1:A:137:TYR:HA	4:A:302:HOH:O	2.19	0.41
1:A:165:ALA:C	1:A:167:THR:H	2.24	0.41
1:A:161:ALA:O	1:A:162:GLN:C	2.58	0.41
1:A:48:ARG:CG	1:A:126:PHE:CE2	3.04	0.41
1:A:211:GLU:O	1:A:211:GLU:CG	2.65	0.41
1:A:90:GLU:O	1:A:93:SER:OG	2.24	0.41
1:A:90:GLU:HA	4:A:305:HOH:O	2.21	0.40
1:A:38:LEU:CD1	1:A:47:GLU:OE2	2.67	0.40
1:A:56[B]:LYS:O	1:A:59:ILE:HG22	2.21	0.40
1:A:130:MET:CG	4:A:273:HOH:O	2.68	0.40

There are no symmetry-related clashes.

5.3 Torsion angles [i](#)

5.3.1 Protein backbone [i](#)

In the following table, the Percentiles column shows the percent Ramachandran outliers of the chain as a percentile score with respect to all X-ray entries followed by that with respect to entries of similar resolution.

The Analysed column shows the number of residues for which the backbone conformation was analysed, and the total number of residues.

Mol	Chain	Analysed	Favoured	Allowed	Outliers	Percentiles	
1	A	212/240 (88%)	197 (93%)	15 (7%)	0	100	100
2	P	29/31 (94%)	27 (93%)	1 (3%)	1 (3%)	3	5
All	All	241/271 (89%)	224 (93%)	16 (7%)	1 (0%)	34	57

All (1) Ramachandran outliers are listed below:

Mol	Chain	Res	Type
2	P	943	LYS

5.3.2 Protein sidechains [i](#)

In the following table, the Percentiles column shows the percent sidechain outliers of the chain as a percentile score with respect to all X-ray entries followed by that with respect to entries of similar resolution.

The Analysed column shows the number of residues for which the sidechain conformation was analysed, and the total number of residues.

Mol	Chain	Analysed	Rotameric	Outliers	Percentiles	
1	A	188/204 (92%)	152 (81%)	36 (19%)	1	2
2	P	28/28 (100%)	18 (64%)	10 (36%)	0	0
All	All	216/232 (93%)	170 (79%)	46 (21%)	1	1

All (46) residues with a non-rotameric sidechain are listed below:

Mol	Chain	Res	Type
1	A	25[A]	GLU
1	A	25[B]	GLU
1	A	36	ASN
1	A	37	SER
1	A	41	GLU
1	A	65	SER
1	A	71	SER
1	A	76	GLU
1	A	77	GLU
1	A	86	ASN
1	A	101	LYS
1	A	108	LYS
1	A	109	LEU
1	A	110	LEU
1	A	113	LYS
1	A	122	ASP
1	A	123	SER
1	A	128	LEU
1	A	147	ARG
1	A	156	THR
1	A	166	THR
1	A	167	THR
1	A	172	THR
1	A	175	ILE
1	A	176	ARG
1	A	183	PHE
1	A	189	GLU
1	A	196	ARG
1	A	212	LEU
1	A	213	ASP
1	A	221	LYS
1	A	224	THR
1	A	225	LEU

Continued on next page...

Continued from previous page...

Mol	Chain	Res	Type
1	A	229	LEU
1	A	234	LEU
1	A	235	THR
2	P	928	GLU
2	P	940	VAL
2	P	942	LEU
2	P	945	LEU
2	P	946	ASP
2	P	950	ILE
2	P	951	GLN
2	P	952	GLN
2	P	953	SER
2	P	956	ILE

Sometimes sidechains can be flipped to improve hydrogen bonding and reduce clashes. All (3) such sidechains are listed below:

Mol	Chain	Res	Type
1	A	20	GLN
1	A	203	GLN
1	A	228	GLN

5.3.3 RNA [i](#)

There are no RNA molecules in this entry.

5.4 Non-standard residues in protein, DNA, RNA chains [i](#)

There are no non-standard protein/DNA/RNA residues in this entry.

5.5 Carbohydrates [i](#)

There are no monosaccharides in this entry.

5.6 Ligand geometry [i](#)

1 ligand is modelled in this entry.

In the following table, the Counts columns list the number of bonds (or angles) for which Mogul statistics could be retrieved, the number of bonds (or angles) that are observed in the model and

the number of bonds (or angles) that are defined in the Chemical Component Dictionary. The Link column lists molecule types, if any, to which the group is linked. The Z score for a bond length (or angle) is the number of standard deviations the observed value is removed from the expected value. A bond length (or angle) with $|Z| > 2$ is considered an outlier worth inspection. RMSZ is the root-mean-square of all Z scores of the bond lengths (or angles).

Mol	Type	Chain	Res	Link	Bond lengths			Bond angles		
					Counts	RMSZ	# Z > 2	Counts	RMSZ	# Z > 2
3	EBT	A	241	-	19,22,22	0.81	1 (5%)	23,29,29	0.92	1 (4%)

In the following table, the Chirals column lists the number of chiral outliers, the number of chiral centers analysed, the number of these observed in the model and the number defined in the Chemical Component Dictionary. Similar counts are reported in the Torsion and Rings columns. '-' means no outliers of that kind were identified.

Mol	Type	Chain	Res	Link	Chirals	Torsions	Rings
3	EBT	A	241	-	-	12/20/24/24	0/1/1/1

All (1) bond length outliers are listed below:

Mol	Chain	Res	Type	Atoms	Z	Observed(Å)	Ideal(Å)
3	A	241	EBT	CA-N	2.37	1.49	1.46

All (1) bond angle outliers are listed below:

Mol	Chain	Res	Type	Atoms	Z	Observed(°)	Ideal(°)
3	A	241	EBT	CG-CB-CA	-2.21	107.52	115.04

There are no chirality outliers.

All (12) torsion outliers are listed below:

Mol	Chain	Res	Type	Atoms
3	A	241	EBT	NAF-CAJ-CAK-CAM
3	A	241	EBT	CAL-CAJ-CAK-OAA
3	A	241	EBT	CAL-CAJ-CAK-CAM
3	A	241	EBT	NAF-CAJ-CAL-CAP
3	A	241	EBT	CAK-CAJ-CAL-CAP
3	A	241	EBT	CA-CB-CG-CD2
3	A	241	EBT	CA-CB-CG-CD1
3	A	241	EBT	NAF-CAJ-CAK-OAA
3	A	241	EBT	OAA-CAK-CAM-OAB
3	A	241	EBT	CAJ-CAK-CAM-OAB
3	A	241	EBT	OAA-CAK-CAM-N

Continued on next page...

Continued from previous page...

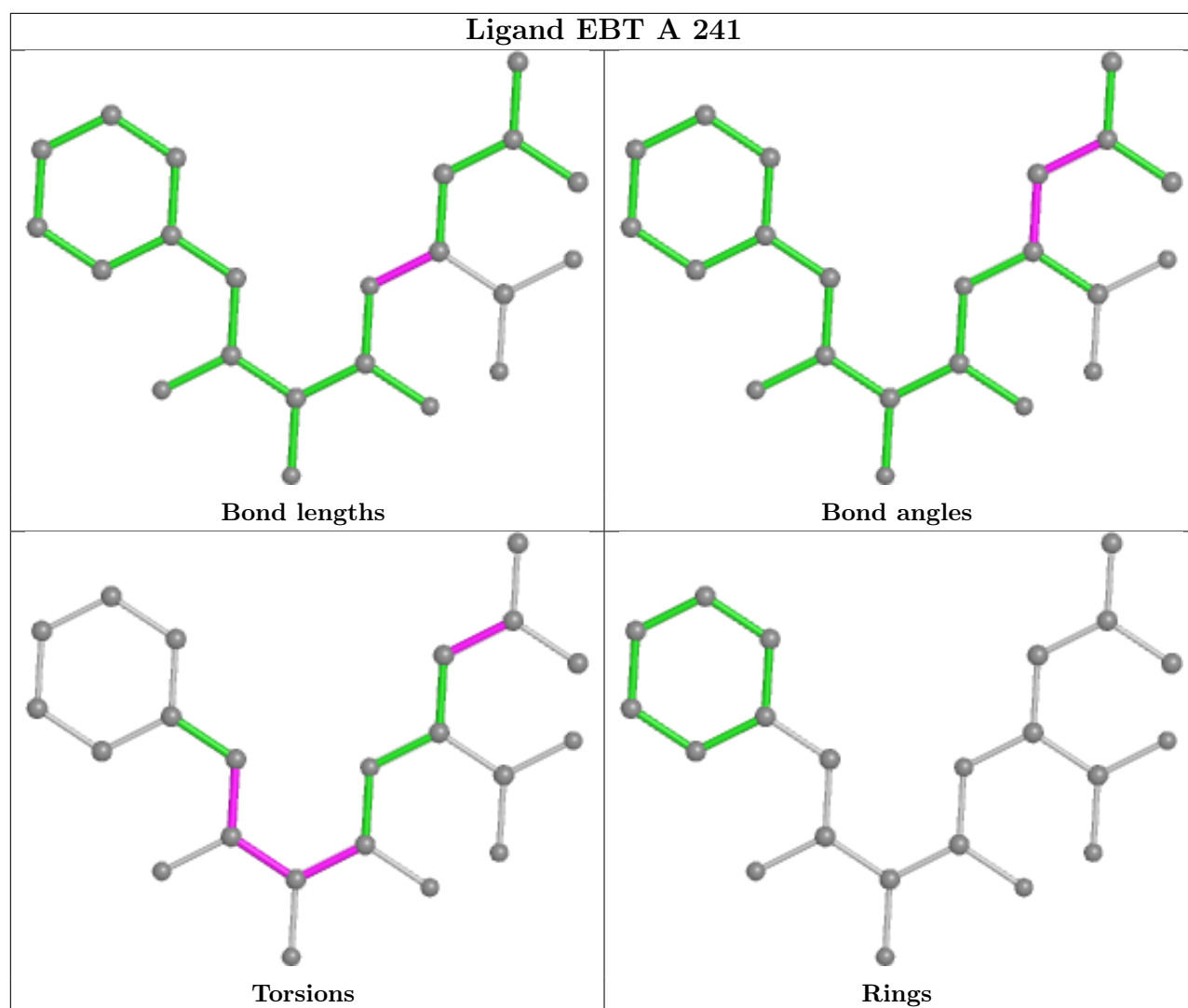
Mol	Chain	Res	Type	Atoms
3	A	241	EBT	CAJ-CAK-CAM-N

There are no ring outliers.

1 monomer is involved in 20 short contacts:

Mol	Chain	Res	Type	Clashes	Symm-Clashes
3	A	241	EBT	20	0

The following is a two-dimensional graphical depiction of Mogul quality analysis of bond lengths, bond angles, torsion angles, and ring geometry for all instances of the Ligand of Interest. In addition, ligands with molecular weight > 250 and outliers as shown on the validation Tables will also be included. For torsion angles, if less than 5% of the Mogul distribution of torsion angles is within 10 degrees of the torsion angle in question, then that torsion angle is considered an outlier. Any bond that is central to one or more torsion angles identified as an outlier by Mogul will be highlighted in the graph. For rings, the root-mean-square deviation (RMSD) between the ring in question and similar rings identified by Mogul is calculated over all ring torsion angles. If the average RMSD is greater than 60 degrees and the minimal RMSD between the ring in question and any Mogul-identified rings is also greater than 60 degrees, then that ring is considered an outlier. The outliers are highlighted in purple. The color gray indicates Mogul did not find sufficient equivalents in the CSD to analyse the geometry.



5.7 Other polymers [i](#)

There are no such residues in this entry.

5.8 Polymer linkage issues [i](#)

There are no chain breaks in this entry.

6 Fit of model and data [i](#)

6.1 Protein, DNA and RNA chains [i](#)

In the following table, the column labelled ‘#RSRZ> 2’ contains the number (and percentage) of RSRZ outliers, followed by percent RSRZ outliers for the chain as percentile scores relative to all X-ray entries and entries of similar resolution. The OWAB column contains the minimum, median, 95th percentile and maximum values of the occupancy-weighted average B-factor per residue. The column labelled ‘Q< 0.9’ lists the number of (and percentage) of residues with an average occupancy less than 0.9.

Mol	Chain	Analysed	<RSRZ>	#RSRZ>2	OWAB(Å ²)	Q<0.9
1	A	218/240 (90%)	-0.07	6 (2%) 53 46	20, 54, 80, 87	0
2	P	31/31 (100%)	0.36	3 (9%) 7 5	50, 67, 89, 91	0
All	All	249/271 (91%)	-0.02	9 (3%) 42 35	20, 55, 82, 91	0

All (9) RSRZ outliers are listed below:

Mol	Chain	Res	Type	RSRZ
1	A	240	ASP	4.1
2	P	947	ILE	3.2
2	P	948	GLU	2.9
1	A	74	GLN	2.9
1	A	38	LEU	2.8
2	P	946	ASP	2.7
1	A	97	ASN	2.7
1	A	239	SER	2.7
1	A	89	ARG	2.0

6.2 Non-standard residues in protein, DNA, RNA chains [i](#)

There are no non-standard protein/DNA/RNA residues in this entry.

6.3 Carbohydrates [i](#)

There are no monosaccharides in this entry.

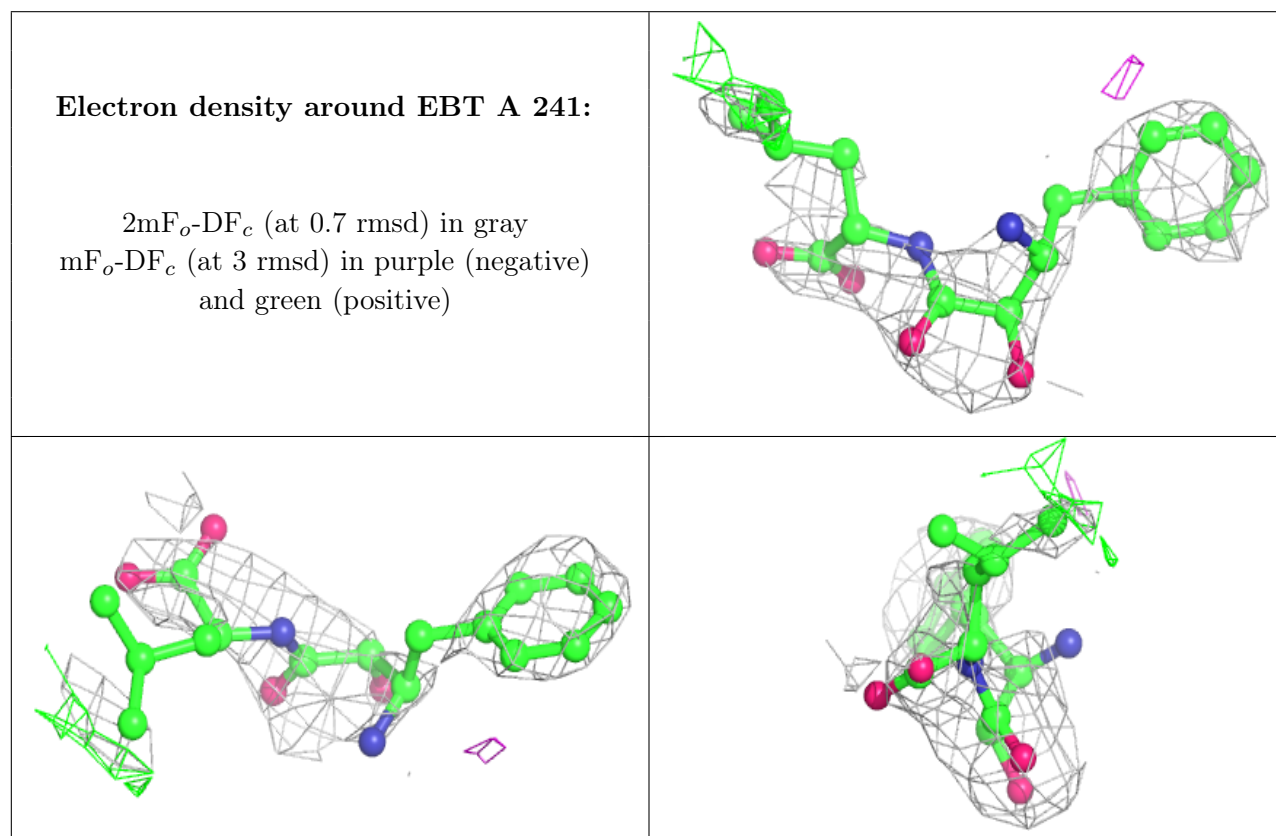
6.4 Ligands [i](#)

In the following table, the Atoms column lists the number of modelled atoms in the group and the number defined in the chemical component dictionary. The B-factors column lists the minimum,

median, 95th percentile and maximum values of B factors of atoms in the group. The column labelled 'Q < 0.9' lists the number of atoms with occupancy less than 0.9.

Mol	Type	Chain	Res	Atoms	RSCC	RSR	B-factors(Å ²)	Q<0.9
3	EBT	A	241	22/22	0.69	0.34	101,107,109,109	0

The following is a graphical depiction of the model fit to experimental electron density of all instances of the Ligand of Interest. In addition, ligands with molecular weight > 250 and outliers as shown on the geometry validation Tables will also be included. Each fit is shown from different orientation to approximate a three-dimensional view.



6.5 Other polymers ⓘ

There are no such residues in this entry.