



# Full wwPDB X-ray Structure Validation Report ⓘ

Sep 13, 2020 – 05:14 PM BST

PDB ID : 4M65  
Title : In situ thermolysin crystallized on a MiTeGen micromesh with asparagine ligand  
Authors : Yin, X.; Scalia, A.; Leroy, L.; Cuttitta, C.M.; Polizzo, G.M.; Ericson, D.L.; Roessler, C.G.; Campos, O.; Agarwal, R.; Allaire, M.; Orville, A.M.; Jackimowicz, R.; Ma, M.Y.; Sweet, R.M.; Soares, A.S.  
Deposited on : 2013-08-08  
Resolution : 1.60 Å(reported)

This is a Full wwPDB X-ray Structure Validation Report for a publicly released PDB entry.

We welcome your comments at [validation@mail.wwpdb.org](mailto:validation@mail.wwpdb.org)

A user guide is available at

<https://www.wwpdb.org/validation/2017/XrayValidationReportHelp>

with specific help available everywhere you see the ⓘ symbol.

---

The following versions of software and data (see [references ⓘ](#)) were used in the production of this report:

MolProbity : 4.02b-467  
Mogul : 1.8.5 (274361), CSD as541be (2020)  
Xtriage (Phenix) : 1.13  
EDS : 2.14.4.dev1  
Percentile statistics : 20191225.v01 (using entries in the PDB archive December 25th 2019)  
Refmac : 5.8.0158  
CCP4 : 7.0.044 (Gargrove)  
Ideal geometry (proteins) : Engh & Huber (2001)  
Ideal geometry (DNA, RNA) : Parkinson et al. (1996)  
Validation Pipeline (wwPDB-VP) : 2.14.4.dev1

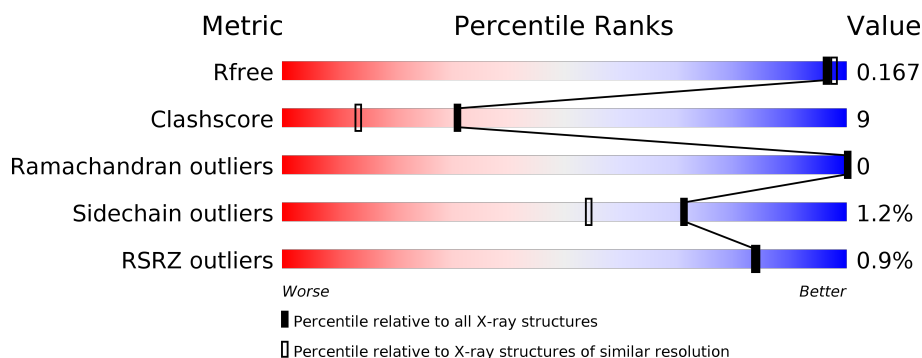
# 1 Overall quality at a glance

The following experimental techniques were used to determine the structure:

*X-RAY DIFFRACTION*

The reported resolution of this entry is 1.60 Å.

Percentile scores (ranging between 0-100) for global validation metrics of the entry are shown in the following graphic. The table shows the number of entries on which the scores are based.



Metric	Whole archive (#Entries)	Similar resolution (#Entries, resolution range(Å))
$R_{free}$	130704	3398 (1.60-1.60)
Clashscore	141614	3665 (1.60-1.60)
Ramachandran outliers	138981	3564 (1.60-1.60)
Sidechain outliers	138945	3563 (1.60-1.60)
RSRZ outliers	127900	3321 (1.60-1.60)

The table below summarises the geometric issues observed across the polymeric chains and their fit to the electron density. The red, orange, yellow and green segments on the lower bar indicate the fraction of residues that contain outliers for  $\geq 3$ , 2, 1 and 0 types of geometric quality criteria respectively. A grey segment represents the fraction of residues that are not modelled. The numeric value for each fraction is indicated below the corresponding segment, with a dot representing fractions  $\leq 5\%$ . The upper red bar (where present) indicates the fraction of residues that have poor fit to the electron density. The numeric value is given above the bar.

Mol	Chain	Length	Quality of chain
1	A	317	<div> <div></div> <div>82%</div> <div>15%</div> <div></div> </div>

The following table lists non-polymeric compounds, carbohydrate monomers and non-standard residues in protein, DNA, RNA chains that are outliers for geometric or electron-density-fit criteria:

Mol	Type	Chain	Res	Chirality	Geometry	Clashes	Electron density
5	EDO	A	409	-	-	X	-
5	EDO	A	415	-	-	-	X

## 2 Entry composition [i](#)

There are 7 unique types of molecules in this entry. The entry contains 3009 atoms, of which 0 are hydrogens and 0 are deuteriums.

In the tables below, the ZeroOcc column contains the number of atoms modelled with zero occupancy, the AltConf column contains the number of residues with at least one atom in alternate conformation and the Trace column contains the number of residues modelled with at most 2 atoms.

- Molecule 1 is a protein called Thermolysin.

Mol	Chain	Residues	Atoms					ZeroOcc	AltConf	Trace
1	A	316	Total	C	N	O	S	0	9	0
			2488	1562	417	506	3			

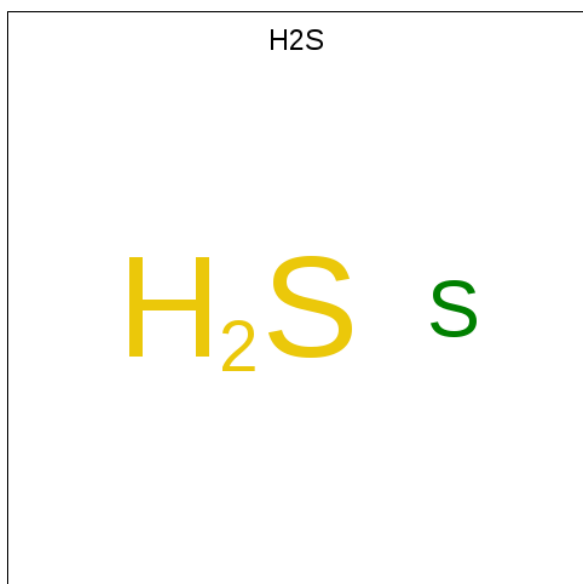
- Molecule 2 is CALCIUM ION (three-letter code: CA) (formula: Ca).

Mol	Chain	Residues	Atoms		ZeroOcc	AltConf
2	A	5	Total	Ca	0	0
			5	5		

- Molecule 3 is ZINC ION (three-letter code: ZN) (formula: Zn).

Mol	Chain	Residues	Atoms		ZeroOcc	AltConf
3	A	1	Total	Zn	0	0
			1	1		

- Molecule 4 is HYDROSULFURIC ACID (three-letter code: H2S) (formula: H<sub>2</sub>S).



Mol	Chain	Residues	Atoms	ZeroOcc	AltConf
4	A	1	Total S 1 1	0	0
4	A	1	Total S 1 1	0	0

- Molecule 5 is 1,2-ETHANEDIOL (three-letter code: EDO) (formula: C<sub>2</sub>H<sub>6</sub>O<sub>2</sub>).



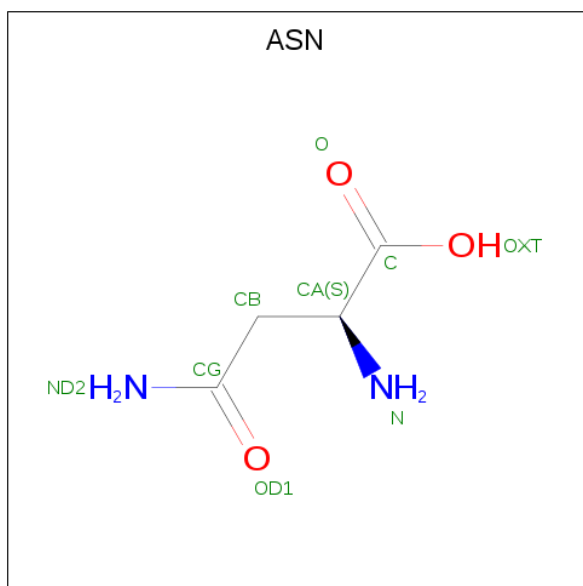
Mol	Chain	Residues	Atoms	ZeroOcc	AltConf
5	A	1	Total C O 4 2 2	0	0
5	A	1	Total C O 4 2 2	0	0
5	A	1	Total C O 4 2 2	0	0
5	A	1	Total C O 4 2 2	0	0
5	A	1	Total C O 4 2 2	0	0
5	A	1	Total C O 4 2 2	0	0
5	A	1	Total C O 4 2 2	0	0
5	A	1	Total C O 4 2 2	0	0
5	A	1	Total C O 4 2 2	0	0
5	A	1	Total C O 4 2 2	0	0

*Continued on next page...*

*Continued from previous page...*

Mol	Chain	Residues	Atoms			ZeroOcc	AltConf
5	A	1	Total	C	O	0	0
			4	2	2		

- Molecule 6 is ASPARAGINE (three-letter code: ASN) (formula:  $C_4H_8N_2O_3$ ).



Mol	Chain	Residues	Atoms				ZeroOcc	AltConf
6	A	1	Total	C	N	O	0	0
			9	4	2	3		

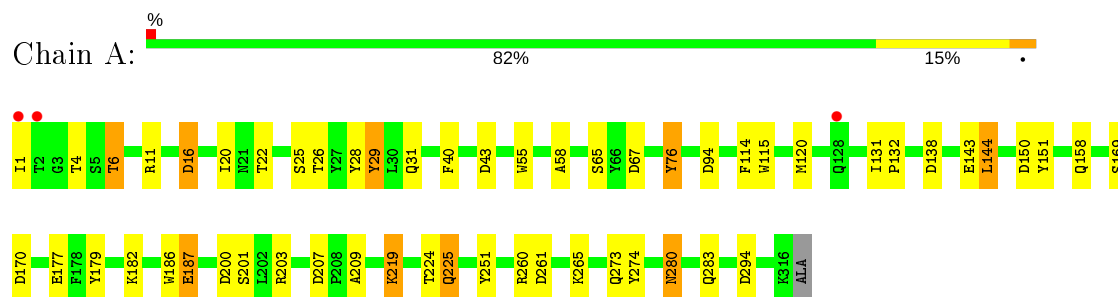
- Molecule 7 is water.

Mol	Chain	Residues	Atoms		ZeroOcc	AltConf
7	A	460	Total	O	0	0
			460	460		

### 3 Residue-property plots

These plots are drawn for all protein, RNA, DNA and oligosaccharide chains in the entry. The first graphic for a chain summarises the proportions of the various outlier classes displayed in the second graphic. The second graphic shows the sequence view annotated by issues in geometry and electron density. Residues are color-coded according to the number of geometric quality criteria for which they contain at least one outlier: green = 0, yellow = 1, orange = 2 and red = 3 or more. A red dot above a residue indicates a poor fit to the electron density ( $RSRZ > 2$ ). Stretches of 2 or more consecutive residues without any outlier are shown as a green connector. Residues present in the sample, but not in the model, are shown in grey.

#### • Molecule 1: Thermolysin



## 4 Data and refinement statistics

Property	Value	Source
Space group	P 61 2 2	Depositor
Cell constants a, b, c, $\alpha$ , $\beta$ , $\gamma$	92.83 Å 92.83 Å 129.17 Å 90.00° 90.00° 120.00°	Depositor
Resolution (Å)	31.59 – 1.60 31.57 – 1.60	Depositor EDS
% Data completeness (in resolution range)	98.2 (31.59-1.60) 98.2 (31.57-1.60)	Depositor EDS
$R_{merge}$	0.05	Depositor
$R_{sym}$	(Not available)	Depositor
$\langle I/\sigma(I) \rangle$ <sup>1</sup>	5.17 (at 1.60 Å)	Xtriage
Refinement program	REFMAC 5.7.0032	Depositor
R, $R_{free}$	0.130 , 0.159 0.144 , 0.167	Depositor DCC
$R_{free}$ test set	2167 reflections (5.04%)	wwPDB-VP
Wilson B-factor (Å <sup>2</sup> )	14.7	Xtriage
Anisotropy	0.531	Xtriage
Bulk solvent $k_{sol}$ (e/Å <sup>3</sup> ), $B_{sol}$ (Å <sup>2</sup> )	0.35 , 62.5	EDS
L-test for twinning <sup>2</sup>	$\langle  L  \rangle = 0.49$ , $\langle L^2 \rangle = 0.32$	Xtriage
Estimated twinning fraction	No twinning to report.	Xtriage
$F_o, F_c$ correlation	0.97	EDS
Total number of atoms	3009	wwPDB-VP
Average B, all atoms (Å <sup>2</sup> )	18.0	wwPDB-VP

Xtriage's analysis on translational NCS is as follows: *The largest off-origin peak in the Patterson function is 4.28% of the height of the origin peak. No significant pseudotranslation is detected.*

<sup>1</sup>Intensities estimated from amplitudes.

<sup>2</sup>Theoretical values of  $\langle |L| \rangle$ ,  $\langle L^2 \rangle$  for acentric reflections are 0.5, 0.333 respectively for untwinned datasets, and 0.375, 0.2 for perfectly twinned datasets.

## 5 Model quality

### 5.1 Standard geometry

Bond lengths and bond angles in the following residue types are not validated in this section: ZN, CA, EDO, H2S

The Z score for a bond length (or angle) is the number of standard deviations the observed value is removed from the expected value. A bond length (or angle) with  $|Z| > 5$  is considered an outlier worth inspection. RMSZ is the root-mean-square of all Z scores of the bond lengths (or angles).

Mol	Chain	Bond lengths		Bond angles	
		RMSZ	$\# Z  > 5$	RMSZ	$\# Z  > 5$
1	A	1.48	16/2562 (0.6%)	1.54	33/3487 (0.9%)

All (16) bond length outliers are listed below:

Mol	Chain	Res	Type	Atoms	Z	Observed(Å)	Ideal(Å)
1	A	187	GLU	CD-OE2	11.06	1.37	1.25
1	A	16	ASP	CB-CG	11.00	1.74	1.51
1	A	65	SER	CB-OG	-9.36	1.30	1.42
1	A	16	ASP	CG-OD1	8.26	1.44	1.25
1	A	143	GLU	CD-OE2	7.88	1.34	1.25
1	A	187	GLU	CB-CG	6.86	1.65	1.52
1	A	177	GLU	CD-OE2	6.28	1.32	1.25
1	A	6	THR	CB-OG1	6.12	1.55	1.43
1	A	186	TRP	CD2-CE2	5.75	1.48	1.41
1	A	25	SER	CB-OG	5.60	1.49	1.42
1	A	274	TYR	CG-CD2	-5.54	1.31	1.39
1	A	179	TYR	CZ-OH	5.34	1.47	1.37
1	A	76	TYR	CG-CD2	-5.33	1.32	1.39
1	A	225	GLN	CG-CD	5.18	1.62	1.51
1	A	76	TYR	CE1-CZ	-5.14	1.31	1.38
1	A	169	SER	CB-OG	5.05	1.48	1.42

All (33) bond angle outliers are listed below:

Mol	Chain	Res	Type	Atoms	Z	Observed(°)	Ideal(°)
1	A	16	ASP	CB-CG-OD1	24.55	140.39	118.30
1	A	16	ASP	CB-CG-OD2	-24.17	96.55	118.30
1	A	179	TYR	CB-CG-CD1	-9.02	115.59	121.00
1	A	43	ASP	CB-CG-OD2	-9.02	110.18	118.30
1	A	200	ASP	CB-CG-OD2	-8.48	110.67	118.30

*Continued on next page...*



*Continued from previous page...*

Mol	Chain	Res	Type	Atoms	Z	Observed(°)	Ideal(°)
1	A	151	TYR	CB-CG-CD1	8.00	125.80	121.00
1	A	29	TYR	CB-CG-CD2	-8.00	116.20	121.00
1	A	207	ASP	CB-CG-OD2	-7.79	111.29	118.30
1	A	138	ASP	CB-CG-OD1	7.61	125.15	118.30
1	A	28	TYR	CB-CG-CD2	-7.35	116.59	121.00
1	A	179	TYR	CG-CD2-CE2	-7.21	115.53	121.30
1	A	294	ASP	CB-CG-OD1	7.16	124.75	118.30
1	A	150[A]	ASP	CB-CG-OD2	-7.05	111.95	118.30
1	A	150[B]	ASP	CB-CG-OD2	-7.05	111.95	118.30
1	A	144	LEU	CB-CG-CD2	-6.95	99.18	111.00
1	A	170	ASP	CB-CG-OD1	6.70	124.33	118.30
1	A	40	PHE	CB-CG-CD2	-6.59	116.19	120.80
1	A	207	ASP	CB-CG-OD1	6.54	124.18	118.30
1	A	219	LYS	CD-CE-NZ	6.50	126.65	111.70
1	A	94	ASP	CB-CG-OD2	-6.46	112.48	118.30
1	A	6	THR	OG1-CB-CG2	6.37	124.64	110.00
1	A	4[A]	THR	CA-CB-CG2	-6.15	103.79	112.40
1	A	4[B]	THR	CA-CB-CG2	-6.15	103.79	112.40
1	A	28	TYR	CD1-CE1-CZ	-5.57	114.78	119.80
1	A	203	ARG	NE-CZ-NH1	5.54	123.07	120.30
1	A	11	ARG	NE-CZ-NH2	5.47	123.03	120.30
1	A	40	PHE	CB-CG-CD1	5.32	124.53	120.80
1	A	260	ARG	NE-CZ-NH2	-5.32	117.64	120.30
1	A	67	ASP	CB-CG-OD1	5.19	122.97	118.30
1	A	114	PHE	CB-CG-CD1	5.09	124.36	120.80
1	A	179	TYR	CD1-CE1-CZ	-5.09	115.22	119.80
1	A	225	GLN	CA-CB-CG	5.08	124.58	113.40
1	A	28	TYR	CZ-CE2-CD2	-5.04	115.26	119.80

There are no chirality outliers.

There are no planarity outliers.

## 5.2 Too-close contacts ⓘ

In the following table, the Non-H and H(model) columns list the number of non-hydrogen atoms and hydrogen atoms in the chain respectively. The H(added) column lists the number of hydrogen atoms added and optimized by MolProbity. The Clashes column lists the number of clashes within the asymmetric unit, whereas Symm-Clashes lists symmetry related clashes.

Mol	Chain	Non-H	H(model)	H(added)	Clashes	Symm-Clashes
1	A	2488	0	2326	44	0

*Continued on next page...*

*Continued from previous page...*

Mol	Chain	Non-H	H(model)	H(added)	Clashes	Symm-Clashes
2	A	5	0	0	0	0
3	A	1	0	0	0	0
4	A	2	0	0	0	0
5	A	44	0	65	11	0
6	A	9	0	5	3	0
7	A	460	0	0	14	1
All	All	3009	0	2396	45	1

The all-atom clashscore is defined as the number of clashes found per 1000 atoms (including hydrogen atoms). The all-atom clashscore for this structure is 9.

All (45) close contacts within the same asymmetric unit are listed below, sorted by their clash magnitude.

Atom-1	Atom-2	Interatomic distance (Å)	Clash overlap (Å)
1:A:16:ASP:CB	1:A:16:ASP:CG	1.74	1.53
1:A:219:LYS:NZ	5:A:409:EDO:O1	1.95	0.99
1:A:261[A]:ASP:OD2	1:A:265:LYS:NZ	1.98	0.97
1:A:219:LYS:HZ2	5:A:409:EDO:C2	1.85	0.89
1:A:182:LYS:HB2	7:A:920:HOH:O	1.74	0.86
1:A:182:LYS:CB	7:A:920:HOH:O	2.22	0.85
1:A:120[B]:MET:SD	1:A:144:LEU:HG	2.21	0.80
1:A:219:LYS:HZ2	5:A:409:EDO:H22	1.45	0.80
1:A:16:ASP:CB	1:A:16:ASP:OD2	2.31	0.78
1:A:158[A]:GLN:OE1	7:A:805:HOH:O	2.03	0.76
1:A:219:LYS:NZ	5:A:409:EDO:C1	2.52	0.73
1:A:58:ALA:O	5:A:417:EDO:H22	1.93	0.69
1:A:26:THR:O	5:A:417:EDO:H21	1.95	0.66
1:A:115:TRP:H	6:A:420:ASN:HD21	1.44	0.65
1:A:219:LYS:HZ3	5:A:409:EDO:C1	2.11	0.63
1:A:219:LYS:NZ	5:A:409:EDO:C2	2.62	0.63
1:A:273:GLN:HG3	7:A:901:HOH:O	2.02	0.59
1:A:182:LYS:CG	7:A:920:HOH:O	2.50	0.58
1:A:1:ILE:N	1:A:31:GLN:HE22	2.02	0.58
1:A:280:ASN:C	1:A:280:ASN:HD22	2.06	0.58
6:A:420:ASN:N	6:A:420:ASN:HD22	2.02	0.56
1:A:273:GLN:CD	7:A:901:HOH:O	2.44	0.56
1:A:219:LYS:NZ	5:A:409:EDO:H22	2.18	0.54
1:A:273:GLN:CG	7:A:901:HOH:O	2.54	0.54
1:A:16:ASP:CA	1:A:16:ASP:CG	2.67	0.53
1:A:225:GLN:HG2	7:A:852:HOH:O	2.09	0.53
1:A:219:LYS:HZ2	5:A:409:EDO:C1	2.22	0.51

*Continued on next page...*

Continued from previous page...

Atom-1	Atom-2	Interatomic distance (Å)	Clash overlap (Å)
1:A:280:ASN:ND2	1:A:283:GLN:H	2.09	0.50
1:A:115:TRP:H	6:A:420:ASN:ND2	2.10	0.47
1:A:6:THR:HG23	1:A:22:THR:OG1	2.14	0.47
1:A:219:LYS:HE3	1:A:251:TYR:OH	2.15	0.46
1:A:219:LYS:HD3	5:A:409:EDO:H22	1.97	0.46
1:A:280:ASN:HD22	1:A:283:GLN:H	1.65	0.45
1:A:225:GLN:CG	7:A:852:HOH:O	2.63	0.45
1:A:224:THR:HG23	7:A:743:HOH:O	2.16	0.44
1:A:187:GLU:OE2	1:A:201:SER:OG	2.32	0.44
1:A:1:ILE:H3	1:A:31:GLN:HE22	1.65	0.43
1:A:131:ILE:HB	1:A:132:PRO:CD	2.50	0.42
1:A:182:LYS:HD2	7:A:604:HOH:O	2.19	0.42
1:A:209:ALA:HB2	7:A:959:HOH:O	2.20	0.42
1:A:76:TYR:OH	1:A:182:LYS:HE3	2.20	0.41
1:A:182:LYS:N	7:A:920:HOH:O	2.45	0.41
1:A:29:TYR:HA	1:A:55:TRP:O	2.20	0.41
1:A:182:LYS:HG3	7:A:920:HOH:O	2.15	0.41
1:A:120[B]:MET:CE	1:A:144:LEU:HG	2.50	0.40

All (1) symmetry-related close contacts are listed below. The label for Atom-2 includes the symmetry operator and encoded unit-cell translations to be applied.

Atom-1	Atom-2	Interatomic distance (Å)	Clash overlap (Å)
7:A:932:HOH:O	7:A:936:HOH:O[6_555]	2.13	0.07

## 5.3 Torsion angles [i](#)

### 5.3.1 Protein backbone [i](#)

In the following table, the Percentiles column shows the percent Ramachandran outliers of the chain as a percentile score with respect to all X-ray entries followed by that with respect to entries of similar resolution.

The Analysed column shows the number of residues for which the backbone conformation was analysed, and the total number of residues.

Mol	Chain	Analysed	Favoured	Allowed	Outliers	Percentiles	
1	A	323/317 (102%)	308 (95%)	15 (5%)	0	100	100

There are no Ramachandran outliers to report.

### 5.3.2 Protein sidechains [i](#)

In the following table, the Percentiles column shows the percent sidechain outliers of the chain as a percentile score with respect to all X-ray entries followed by that with respect to entries of similar resolution.

The Analysed column shows the number of residues for which the sidechain conformation was analysed, and the total number of residues.

Mol	Chain	Analysed	Rotameric	Outliers	Percentiles	
1	A	261/252 (104%)	259 (99%)	2 (1%)	81	70

All (2) residues with a non-rotameric sidechain are listed below:

Mol	Chain	Res	Type
1	A	20	ILE
1	A	280	ASN

Some sidechains can be flipped to improve hydrogen bonding and reduce clashes. All (6) such sidechains are listed below:

Mol	Chain	Res	Type
1	A	31	GLN
1	A	33	ASN
1	A	97	ASN
1	A	225	GLN
1	A	280	ASN
1	A	290	GLN

### 5.3.3 RNA [i](#)

There are no RNA molecules in this entry.

## 5.4 Non-standard residues in protein, DNA, RNA chains [i](#)

There are no non-standard protein/DNA/RNA residues in this entry.

## 5.5 Carbohydrates [i](#)

There are no monosaccharides in this entry.

## 5.6 Ligand geometry

Of 20 ligands modelled in this entry, 2 are modelled with single atom and 6 are monoatomic - leaving 12 for Mogul analysis.

In the following table, the Counts columns list the number of bonds (or angles) for which Mogul statistics could be retrieved, the number of bonds (or angles) that are observed in the model and the number of bonds (or angles) that are defined in the Chemical Component Dictionary. The Link column lists molecule types, if any, to which the group is linked. The Z score for a bond length (or angle) is the number of standard deviations the observed value is removed from the expected value. A bond length (or angle) with  $|Z| > 2$  is considered an outlier worth inspection. RMSZ is the root-mean-square of all Z scores of the bond lengths (or angles).

Mol	Type	Chain	Res	Link	Bond lengths			Bond angles		
					Counts	RMSZ	$\# Z  > 2$	Counts	RMSZ	$\# Z  > 2$
5	EDO	A	415	-	3,3,3	0.64	0	2,2,2	0.24	0
5	EDO	A	414	-	3,3,3	0.85	0	2,2,2	0.70	0
5	EDO	A	411	-	3,3,3	0.27	0	2,2,2	2.00	1 (50%)
5	EDO	A	409	-	3,3,3	2.09	1 (33%)	2,2,2	2.07	1 (50%)
5	EDO	A	410	-	3,3,3	0.74	0	2,2,2	0.68	0
5	EDO	A	419	-	3,3,3	0.56	0	2,2,2	1.30	0
5	EDO	A	417	-	3,3,3	0.72	0	2,2,2	0.84	0
5	EDO	A	418	-	3,3,3	0.78	0	2,2,2	0.95	0
5	EDO	A	413	-	3,3,3	0.35	0	2,2,2	1.29	0
6	ASN	A	420	3	5,8,8	1.74	1 (20%)	5,10,10	0.71	0
5	EDO	A	416	2	3,3,3	1.85	1 (33%)	2,2,2	1.08	0
5	EDO	A	412	-	3,3,3	0.50	0	2,2,2	1.01	0

In the following table, the Chirals column lists the number of chiral outliers, the number of chiral centers analysed, the number of these observed in the model and the number defined in the Chemical Component Dictionary. Similar counts are reported in the Torsion and Rings columns. '-' means no outliers of that kind were identified.

Mol	Type	Chain	Res	Link	Chirals	Torsions	Rings
5	EDO	A	415	-	-	1/1/1/1	-
5	EDO	A	414	-	-	0/1/1/1	-
5	EDO	A	411	-	-	1/1/1/1	-
5	EDO	A	409	-	-	0/1/1/1	-
5	EDO	A	410	-	-	0/1/1/1	-
5	EDO	A	419	-	-	1/1/1/1	-
5	EDO	A	417	-	-	1/1/1/1	-
5	EDO	A	418	-	-	0/1/1/1	-
5	EDO	A	413	-	-	1/1/1/1	-
6	ASN	A	420	3	-	2/4/8/8	-

*Continued on next page...*

*Continued from previous page...*

Mol	Type	Chain	Res	Link	Chirals	Torsions	Rings
5	EDO	A	416	2	-	0/1/1/1	-
5	EDO	A	412	-	-	0/1/1/1	-

All (3) bond length outliers are listed below:

Mol	Chain	Res	Type	Atoms	Z	Observed(Å)	Ideal(Å)
6	A	420	ASN	CG-ND2	-3.26	1.22	1.32
5	A	409	EDO	O2-C2	2.95	1.57	1.42
5	A	416	EDO	O1-C1	2.76	1.56	1.42

All (2) bond angle outliers are listed below:

Mol	Chain	Res	Type	Atoms	Z	Observed(°)	Ideal(°)
5	A	409	EDO	O2-C2-C1	2.52	130.07	111.91
5	A	411	EDO	O2-C2-C1	-2.44	94.39	111.91

There are no chirality outliers.

All (7) torsion outliers are listed below:

Mol	Chain	Res	Type	Atoms
6	A	420	ASN	CA-CB-CG-OD1
6	A	420	ASN	CA-CB-CG-ND2
5	A	419	EDO	O1-C1-C2-O2
5	A	411	EDO	O1-C1-C2-O2
5	A	415	EDO	O1-C1-C2-O2
5	A	417	EDO	O1-C1-C2-O2
5	A	413	EDO	O1-C1-C2-O2

There are no ring outliers.

3 monomers are involved in 14 short contacts:

Mol	Chain	Res	Type	Clashes	Symm-Clashes
5	A	409	EDO	9	0
5	A	417	EDO	2	0
6	A	420	ASN	3	0

## 5.7 Other polymers ⓘ

There are no such residues in this entry.

## 5.8 Polymer linkage issues ⓘ

There are no chain breaks in this entry.

## 6 Fit of model and data [i](#)

### 6.1 Protein, DNA and RNA chains [i](#)

In the following table, the column labelled ‘#RSRZ> 2’ contains the number (and percentage) of RSRZ outliers, followed by percent RSRZ outliers for the chain as percentile scores relative to all X-ray entries and entries of similar resolution. The OWAB column contains the minimum, median, 95<sup>th</sup> percentile and maximum values of the occupancy-weighted average B-factor per residue. The column labelled ‘Q< 0.9’ lists the number of (and percentage) of residues with an average occupancy less than 0.9.

Mol	Chain	Analysed	<RSRZ>	#RSRZ>2	OWAB(Å <sup>2</sup> )	Q<0.9
1	A	316/317 (99%)	-0.53	3 (0%) 84 84	9, 13, 23, 36	0

All (3) RSRZ outliers are listed below:

Mol	Chain	Res	Type	RSRZ
1	A	1	ILE	2.5
1	A	128[A]	GLN	2.3
1	A	2	THR	2.2

### 6.2 Non-standard residues in protein, DNA, RNA chains [i](#)

There are no non-standard protein/DNA/RNA residues in this entry.

### 6.3 Carbohydrates [i](#)

There are no monosaccharides in this entry.

### 6.4 Ligands [i](#)

In the following table, the Atoms column lists the number of modelled atoms in the group and the number defined in the chemical component dictionary. The B-factors column lists the minimum, median, 95<sup>th</sup> percentile and maximum values of B factors of atoms in the group. The column labelled ‘Q< 0.9’ lists the number of atoms with occupancy less than 0.9.

Mol	Type	Chain	Res	Atoms	RSCC	RSR	B-factors(Å <sup>2</sup> )	Q<0.9
5	EDO	A	415	4/4	0.64	0.49	57,75,78,82	0
4	H2S	A	407	1/1	0.81	0.10	74,74,74,74	0
5	EDO	A	409	4/4	0.85	0.18	23,28,30,40	0
5	EDO	A	414	4/4	0.87	0.14	25,25,26,38	0

*Continued on next page...*



*Continued from previous page...*

Mol	Type	Chain	Res	Atoms	RSCC	RSR	B-factors( $\text{\AA}^2$ )	Q<0.9
5	EDO	A	419	4/4	0.89	0.13	27,30,36,41	0
5	EDO	A	417	4/4	0.91	0.20	22,25,29,44	0
5	EDO	A	413	4/4	0.94	0.14	27,30,33,44	0
5	EDO	A	416	4/4	0.94	0.10	19,21,22,31	0
5	EDO	A	412	4/4	0.94	0.09	21,24,27,28	0
5	EDO	A	411	4/4	0.95	0.12	34,42,49,49	0
5	EDO	A	410	4/4	0.96	0.08	17,20,27,28	0
5	EDO	A	418	4/4	0.96	0.08	15,16,16,20	0
6	ASN	A	420	9/9	0.97	0.06	10,14,18,21	0
4	H2S	A	408	1/1	0.98	0.06	32,32,32,32	0
2	CA	A	405	1/1	0.99	0.06	17,17,17,17	1
2	CA	A	404	1/1	0.99	0.04	13,13,13,13	0
2	CA	A	403	1/1	1.00	0.04	11,11,11,11	0
3	ZN	A	406	1/1	1.00	0.03	11,11,11,11	0
2	CA	A	402	1/1	1.00	0.04	13,13,13,13	0
2	CA	A	401	1/1	1.00	0.04	11,11,11,11	0

## 6.5 Other polymers [i](#)

There are no such residues in this entry.