



Full wwPDB X-ray Structure Validation Report ⓘ

May 24, 2020 – 07:46 am BST

PDB ID : 4M74
Title : Mutant structure of methyltransferase from *Streptomyces hygrosopicus*
Authors : Liu, Y.C.; Zou, X.W.; Chan, H.C.; Huang, C.J.; Li, T.L.
Deposited on : 2013-08-12
Resolution : 2.20 Å(reported)

This is a Full wwPDB X-ray Structure Validation Report for a publicly released PDB entry.

We welcome your comments at validation@mail.wwpdb.org

A user guide is available at

<https://www.wwpdb.org/validation/2017/XrayValidationReportHelp>

with specific help available everywhere you see the ⓘ symbol.

The following versions of software and data (see [references ⓘ](#)) were used in the production of this report:

MolProbity : 4.02b-467
Mogul : 1.8.5 (274361), CSD as541be (2020)
Xtriage (Phenix) : 1.13
EDS : 2.11
buster-report : 1.1.7 (2018)
Percentile statistics : 20191225.v01 (using entries in the PDB archive December 25th 2019)
Refmac : 5.8.0158
CCP4 : 7.0.044 (Gargrove)
Ideal geometry (proteins) : Engh & Huber (2001)
Ideal geometry (DNA, RNA) : Parkinson et al. (1996)
Validation Pipeline (wwPDB-VP) : 2.11

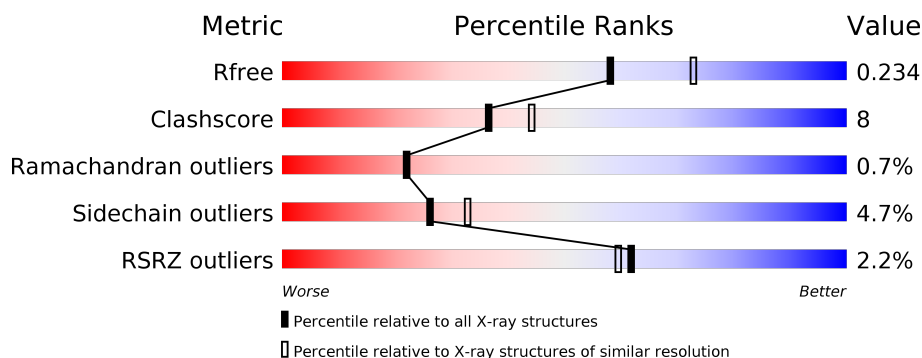
1 Overall quality at a glance

The following experimental techniques were used to determine the structure:

X-RAY DIFFRACTION

The reported resolution of this entry is 2.20 Å.

Percentile scores (ranging between 0-100) for global validation metrics of the entry are shown in the following graphic. The table shows the number of entries on which the scores are based.



Metric	Whole archive (#Entries)	Similar resolution (#Entries, resolution range(Å))
R_{free}	130704	4898 (2.20-2.20)
Clashscore	141614	5594 (2.20-2.20)
Ramachandran outliers	138981	5503 (2.20-2.20)
Sidechain outliers	138945	5504 (2.20-2.20)
RSRZ outliers	127900	4800 (2.20-2.20)

The table below summarises the geometric issues observed across the polymeric chains and their fit to the electron density. The red, orange, yellow and green segments on the lower bar indicate the fraction of residues that contain outliers for ≥ 3 , 2, 1 and 0 types of geometric quality criteria respectively. A grey segment represents the fraction of residues that are not modelled. The numeric value for each fraction is indicated below the corresponding segment, with a dot representing fractions $\leq 5\%$. The upper red bar (where present) indicates the fraction of residues that have poor fit to the electron density. The numeric value is given above the bar.

Mol	Chain	Length	Quality of chain
1	A	357	<div> <div style="width: 100%; height: 10px; background: linear-gradient(to right, red, orange, yellow, green, grey);"></div> <div style="display: flex; justify-content: space-between; margin-top: 5px;"> 81% 11% • 7% </div> </div>
1	B	357	<div> <div style="width: 100%; height: 10px; background: linear-gradient(to right, red, orange, yellow, green, grey);"></div> <div style="display: flex; justify-content: space-between; margin-top: 5px;"> 76% 15% • 5% </div> </div>

The following table lists non-polymeric compounds, carbohydrate monomers and non-standard residues in protein, DNA, RNA chains that are outliers for geometric or electron-density-fit criteria:

Mol	Type	Chain	Res	Chirality	Geometry	Clashes	Electron density
5	HF2	A	404	-	-	X	-

2 Entry composition

There are 7 unique types of molecules in this entry. The entry contains 5828 atoms, of which 0 are hydrogens and 0 are deuteriums.

In the tables below, the ZeroOcc column contains the number of atoms modelled with zero occupancy, the AltConf column contains the number of residues with at least one atom in alternate conformation and the Trace column contains the number of residues modelled with at most 2 atoms.

- Molecule 1 is a protein called Methyltransferase MppJ.

Mol	Chain	Residues	Atoms					ZeroOcc	AltConf	Trace
1	A	333	Total	C	N	O	S	0	1	0
			2596	1642	462	481	11			
1	B	338	Total	C	N	O	S	0	0	0
			2628	1660	466	490	12			

There are 46 discrepancies between the modelled and reference sequences:

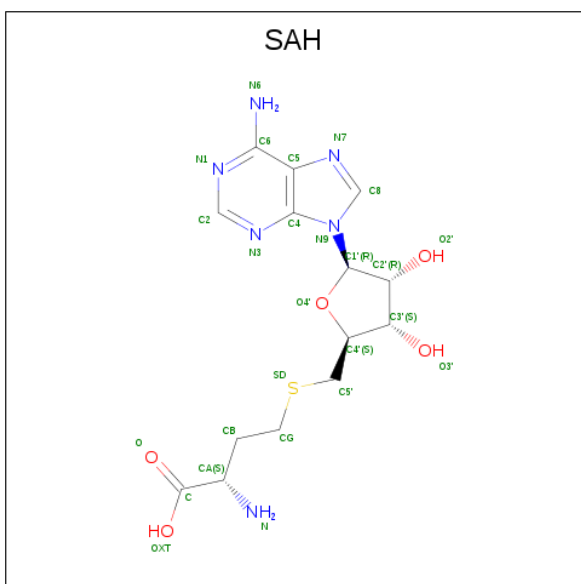
Chain	Residue	Modelled	Actual	Comment	Reference
A	-19	MET	-	EXPRESSION TAG	UNP Q643C8
A	-18	GLY	-	EXPRESSION TAG	UNP Q643C8
A	-17	SER	-	EXPRESSION TAG	UNP Q643C8
A	-16	SER	-	EXPRESSION TAG	UNP Q643C8
A	-15	HIS	-	EXPRESSION TAG	UNP Q643C8
A	-14	HIS	-	EXPRESSION TAG	UNP Q643C8
A	-13	HIS	-	EXPRESSION TAG	UNP Q643C8
A	-12	HIS	-	EXPRESSION TAG	UNP Q643C8
A	-11	HIS	-	EXPRESSION TAG	UNP Q643C8
A	-10	HIS	-	EXPRESSION TAG	UNP Q643C8
A	-9	SER	-	EXPRESSION TAG	UNP Q643C8
A	-8	SER	-	EXPRESSION TAG	UNP Q643C8
A	-7	GLY	-	EXPRESSION TAG	UNP Q643C8
A	-6	LEU	-	EXPRESSION TAG	UNP Q643C8
A	-5	VAL	-	EXPRESSION TAG	UNP Q643C8
A	-4	PRO	-	EXPRESSION TAG	UNP Q643C8
A	-3	ARG	-	EXPRESSION TAG	UNP Q643C8
A	-2	GLY	-	EXPRESSION TAG	UNP Q643C8
A	-1	SER	-	EXPRESSION TAG	UNP Q643C8
A	0	HIS	-	EXPRESSION TAG	UNP Q643C8
A	127	LEU	ARG	ENGINEERED MUTATION	UNP Q643C8
A	244	ALA	ASP	ENGINEERED MUTATION	UNP Q643C8
A	300	GLU	VAL	ENGINEERED MUTATION	UNP Q643C8
B	-19	MET	-	EXPRESSION TAG	UNP Q643C8
B	-18	GLY	-	EXPRESSION TAG	UNP Q643C8

Continued on next page...

Continued from previous page...

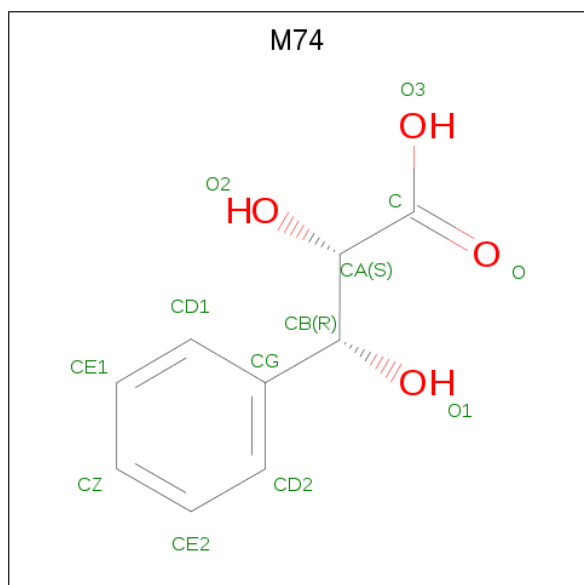
Chain	Residue	Modelled	Actual	Comment	Reference
B	-17	SER	-	EXPRESSION TAG	UNP Q643C8
B	-16	SER	-	EXPRESSION TAG	UNP Q643C8
B	-15	HIS	-	EXPRESSION TAG	UNP Q643C8
B	-14	HIS	-	EXPRESSION TAG	UNP Q643C8
B	-13	HIS	-	EXPRESSION TAG	UNP Q643C8
B	-12	HIS	-	EXPRESSION TAG	UNP Q643C8
B	-11	HIS	-	EXPRESSION TAG	UNP Q643C8
B	-10	HIS	-	EXPRESSION TAG	UNP Q643C8
B	-9	SER	-	EXPRESSION TAG	UNP Q643C8
B	-8	SER	-	EXPRESSION TAG	UNP Q643C8
B	-7	GLY	-	EXPRESSION TAG	UNP Q643C8
B	-6	LEU	-	EXPRESSION TAG	UNP Q643C8
B	-5	VAL	-	EXPRESSION TAG	UNP Q643C8
B	-4	PRO	-	EXPRESSION TAG	UNP Q643C8
B	-3	ARG	-	EXPRESSION TAG	UNP Q643C8
B	-2	GLY	-	EXPRESSION TAG	UNP Q643C8
B	-1	SER	-	EXPRESSION TAG	UNP Q643C8
B	0	HIS	-	EXPRESSION TAG	UNP Q643C8
B	127	LEU	ARG	ENGINEERED MUTATION	UNP Q643C8
B	244	ALA	ASP	ENGINEERED MUTATION	UNP Q643C8
B	300	GLU	VAL	ENGINEERED MUTATION	UNP Q643C8

- Molecule 2 is S-ADENOSYL-L-HOMOCYSTEINE (three-letter code: SAH) (formula: $C_{14}H_{20}N_6O_5S$).



Mol	Chain	Residues	Atoms					ZeroOcc	AltConf
2	A	1	Total	C	N	O	S	0	0
			26	14	6	5	1		
2	B	1	Total	C	N	O	S	0	0
			26	14	6	5	1		

- Molecule 3 is (2S,3R)-2,3-dihydroxy-3-phenylpropanoic acid (three-letter code: M74) (formula: C₉H₁₀O₄).

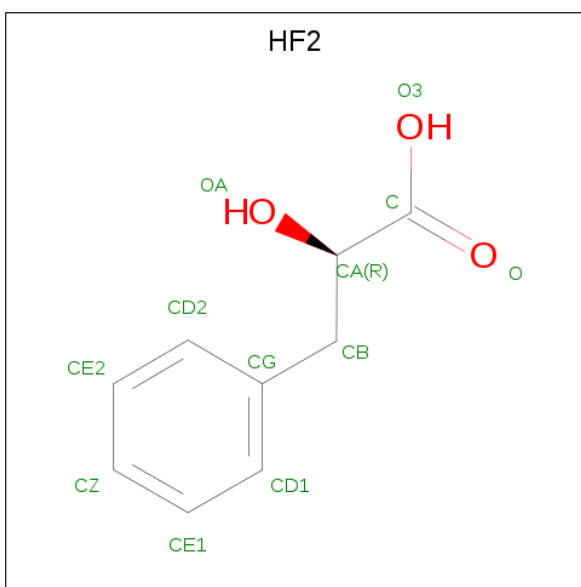


Mol	Chain	Residues	Atoms			ZeroOcc	AltConf
3	A	1	Total	C	O	0	0
			13	9	4		
3	B	1	Total	C	O	0	0
			13	9	4		

- Molecule 4 is FE (III) ION (three-letter code: FE) (formula: Fe).

Mol	Chain	Residues	Atoms		ZeroOcc	AltConf
4	B	1	Total	Fe	0	0
			1	1		
4	A	1	Total	Fe	0	0
			1	1		

- Molecule 5 is (2R)-2-hydroxy-3-phenylpropanoic acid (three-letter code: HF2) (formula: C₉H₁₀O₃).



Mol	Chain	Residues	Atoms			ZeroOcc	AltConf
5	A	1	Total	C	O	0	0
			12	9	3		
5	B	1	Total	C	O	0	0
			12	9	3		

- Molecule 6 is CALCIUM ION (three-letter code: CA) (formula: Ca).

Mol	Chain	Residues	Atoms		ZeroOcc	AltConf
6	B	1	Total	Ca	0	0
			1	1		
6	A	3	Total	Ca	0	0
			3	3		

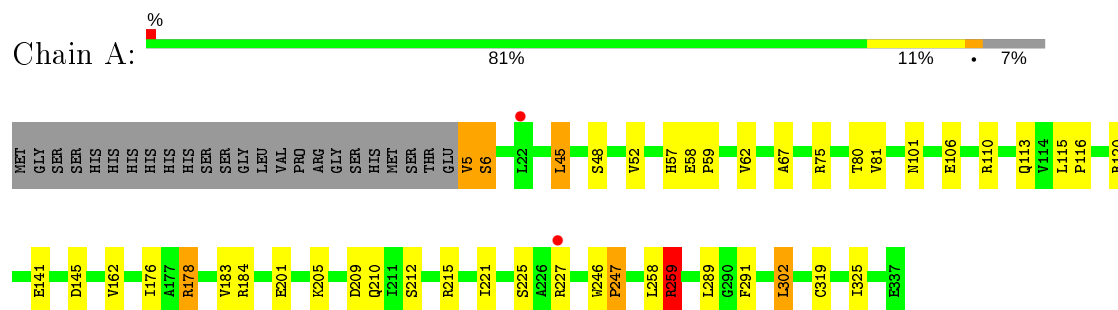
- Molecule 7 is water.

Mol	Chain	Residues	Atoms		ZeroOcc	AltConf
7	A	291	Total	O	0	0
			291	291		
7	B	205	Total	O	0	0
			205	205		

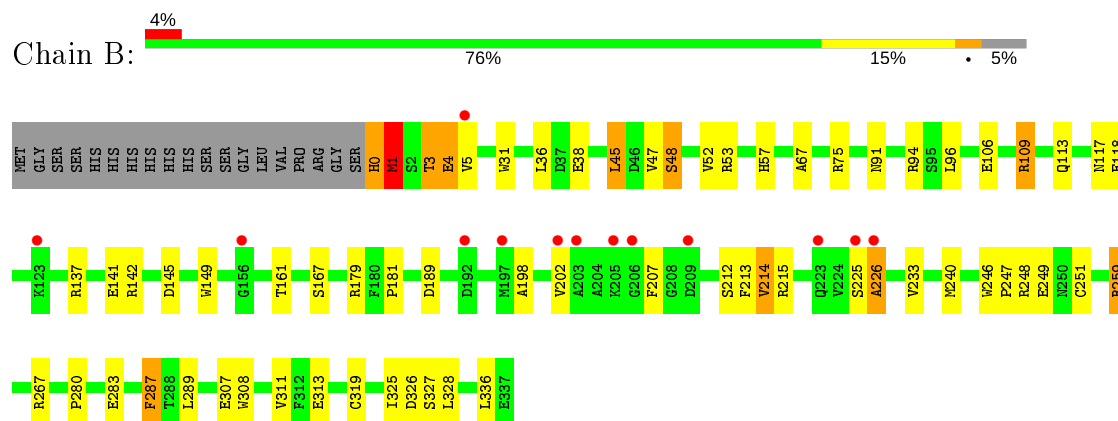
3 Residue-property plots [i](#)

These plots are drawn for all protein, RNA and DNA chains in the entry. The first graphic for a chain summarises the proportions of the various outlier classes displayed in the second graphic. The second graphic shows the sequence view annotated by issues in geometry and electron density. Residues are color-coded according to the number of geometric quality criteria for which they contain at least one outlier: green = 0, yellow = 1, orange = 2 and red = 3 or more. A red dot above a residue indicates a poor fit to the electron density ($RSRZ > 2$). Stretches of 2 or more consecutive residues without any outlier are shown as a green connector. Residues present in the sample, but not in the model, are shown in grey.

• Molecule 1: Methyltransferase MppJ



• Molecule 1: Methyltransferase MppJ



4 Data and refinement statistics

Property	Value	Source
Space group	P 21 21 21	Depositor
Cell constants a, b, c, α , β , γ	57.39 Å 89.92 Å 137.56 Å 90.00° 90.00° 90.00°	Depositor
Resolution (Å)	26.83 – 2.20 26.48 – 2.20	Depositor EDS
% Data completeness (in resolution range)	88.2 (26.83-2.20) 88.2 (26.48-2.20)	Depositor EDS
R_{merge}	(Not available)	Depositor
R_{sym}	(Not available)	Depositor
$\langle I/\sigma(I) \rangle$ ¹	6.24 (at 2.20 Å)	Xtriage
Refinement program	REFMAC 5.7.0032	Depositor
R, R_{free}	0.165 , 0.234 0.171 , 0.234	Depositor DCC
R_{free} test set	1635 reflections (4.99%)	wwPDB-VP
Wilson B-factor (Å ²)	28.2	Xtriage
Anisotropy	0.117	Xtriage
Bulk solvent k_{sol} (e/Å ³), B_{sol} (Å ²)	0.33 , 40.7	EDS
L-test for twinning ²	$\langle L \rangle = 0.49$, $\langle L^2 \rangle = 0.32$	Xtriage
Estimated twinning fraction	No twinning to report.	Xtriage
F_o, F_c correlation	0.96	EDS
Total number of atoms	5828	wwPDB-VP
Average B, all atoms (Å ²)	36.0	wwPDB-VP

Xtriage's analysis on translational NCS is as follows: *The largest off-origin peak in the Patterson function is 5.07% of the height of the origin peak. No significant pseudotranslation is detected.*

¹Intensities estimated from amplitudes.

²Theoretical values of $\langle |L| \rangle$, $\langle L^2 \rangle$ for acentric reflections are 0.5, 0.333 respectively for untwinned datasets, and 0.375, 0.2 for perfectly twinned datasets.

5 Model quality

5.1 Standard geometry

Bond lengths and bond angles in the following residue types are not validated in this section: CA, SAH, FE, HF2, M74

The Z score for a bond length (or angle) is the number of standard deviations the observed value is removed from the expected value. A bond length (or angle) with $|Z| > 5$ is considered an outlier worth inspection. RMSZ is the root-mean-square of all Z scores of the bond lengths (or angles).

Mol	Chain	Bond lengths		Bond angles	
		RMSZ	$\# Z > 5$	RMSZ	$\# Z > 5$
1	A	0.79	0/2658	0.91	3/3597 (0.1%)
1	B	0.74	0/2688	0.83	5/3638 (0.1%)
All	All	0.77	0/5346	0.87	8/7235 (0.1%)

Chiral center outliers are detected by calculating the chiral volume of a chiral center and verifying if the center is modelled as a planar moiety or with the opposite hand. A planarity outlier is detected by checking planarity of atoms in a peptide group, atoms in a mainchain group or atoms of a sidechain that are expected to be planar.

Mol	Chain	#Chirality outliers	#Planarity outliers
1	B	0	1

There are no bond length outliers.

All (8) bond angle outliers are listed below:

Mol	Chain	Res	Type	Atoms	Z	Observed($^{\circ}$)	Ideal($^{\circ}$)
1	A	178	ARG	NE-CZ-NH1	11.38	125.99	120.30
1	A	178	ARG	NE-CZ-NH2	-7.21	116.70	120.30
1	A	259	ARG	NE-CZ-NH2	-6.69	116.95	120.30
1	B	45	LEU	CA-CB-CG	6.06	129.24	115.30
1	B	142	ARG	NE-CZ-NH1	5.58	123.09	120.30
1	B	267	ARG	NE-CZ-NH1	5.18	122.89	120.30
1	B	5	VAL	N-CA-C	5.17	124.95	111.00
1	B	267	ARG	NE-CZ-NH2	-5.13	117.73	120.30

There are no chirality outliers.

All (1) planarity outliers are listed below:

Mol	Chain	Res	Type	Group
1	B	4	GLU	Peptide

5.2 Too-close contacts ⓘ

In the following table, the Non-H and H(model) columns list the number of non-hydrogen atoms and hydrogen atoms in the chain respectively. The H(added) column lists the number of hydrogen atoms added and optimized by MolProbity. The Clashes column lists the number of clashes within the asymmetric unit, whereas Symm-Clashes lists symmetry related clashes.

Mol	Chain	Non-H	H(model)	H(added)	Clashes	Symm-Clashes
1	A	2596	0	2518	39	0
1	B	2628	0	2542	45	0
2	A	26	0	19	0	0
2	B	26	0	19	1	0
3	A	13	0	9	0	0
3	B	13	0	9	1	0
4	A	1	0	0	0	0
4	B	1	0	0	0	0
5	A	12	0	9	8	0
5	B	12	0	9	5	0
6	A	3	0	0	0	0
6	B	1	0	0	0	0
7	A	291	0	0	9	0
7	B	205	0	0	9	0
All	All	5828	0	5134	83	0

The all-atom clashscore is defined as the number of clashes found per 1000 atoms (including hydrogen atoms). The all-atom clashscore for this structure is 8.

All (83) close contacts within the same asymmetric unit are listed below, sorted by their clash magnitude.

Atom-1	Atom-2	Interatomic distance (Å)	Clash overlap (Å)
1:A:319:CYS:SG	5:A:404:HF2:HBA	1.41	1.60
1:A:319:CYS:SG	5:A:404:HF2:CB	2.10	1.40
1:B:319:CYS:SG	5:B:404:HF2:HB	1.64	1.35
1:B:319:CYS:SG	5:B:404:HF2:CB	2.31	1.17
1:B:0:HIS:CD2	1:B:0:HIS:O	1.98	1.15
1:A:319:CYS:SG	5:A:404:HF2:HB	2.06	0.93
1:A:319:CYS:CB	5:A:404:HF2:HBA	2.03	0.88
1:B:0:HIS:CG	1:B:0:HIS:O	2.31	0.83
1:B:179:ARG:HD2	7:B:609:HOH:O	1.81	0.80

Continued on next page...

Continued from previous page...

Atom-1	Atom-2	Interatomic distance (Å)	Clash overlap (Å)
1:B:319:CYS:SG	5:B:404:HF2:HBA	2.21	0.79
1:B:48:SER:O	1:B:52:VAL:HG23	1.85	0.77
1:B:319:CYS:HB3	5:B:404:HF2:HBA	1.67	0.76
1:B:319:CYS:CB	5:B:404:HF2:HBA	2.18	0.74
1:A:325:ILE:O	7:A:723:HOH:O	2.10	0.70
1:A:5:VAL:O	1:A:6:SER:HB3	1.92	0.68
1:A:75:ARG:NH2	7:A:552:HOH:O	2.27	0.66
1:B:325:ILE:O	7:B:705:HOH:O	2.12	0.66
1:A:110:ARG:NE	7:A:760:HOH:O	2.22	0.65
1:B:0:HIS:O	1:B:1:MET:HB3	1.95	0.65
1:B:113:GLN:OE1	7:B:670:HOH:O	2.15	0.63
1:A:319:CYS:SG	5:A:404:HF2:CG	2.87	0.62
1:B:0:HIS:C	1:B:0:HIS:CD2	2.75	0.60
3:B:402:M74:O	7:B:674:HOH:O	2.16	0.58
1:B:3:THR:HG22	1:B:4:GLU:H	1.69	0.58
1:A:45:LEU:HD23	1:A:45:LEU:C	2.23	0.58
1:B:109:ARG:NH1	7:B:573:HOH:O	2.37	0.57
1:A:5:VAL:O	1:A:6:SER:CB	2.52	0.57
1:B:246:TRP:HB3	1:B:247:PRO:HA	1.88	0.56
1:B:179:ARG:NH2	7:B:617:HOH:O	2.38	0.55
1:A:45:LEU:HD22	1:A:81:VAL:HB	1.89	0.54
1:A:246:TRP:HA	1:A:247:PRO:O	2.08	0.54
1:A:110:ARG:CZ	7:A:753:HOH:O	2.56	0.54
1:A:57:HIS:CE1	1:A:59:PRO:HD2	2.43	0.54
1:B:161:THR:HG22	1:B:233:VAL:HG22	1.89	0.53
1:A:58:GLU:O	1:A:62:VAL:HG23	2.09	0.53
1:A:101:ASN:O	1:B:109:ARG:HD2	2.09	0.53
1:A:178:ARG:HD2	7:A:612:HOH:O	2.09	0.51
1:A:259:ARG:O	1:A:259:ARG:HD3	2.11	0.51
1:A:221:ILE:HG21	1:A:258:LEU:HD23	1.94	0.50
1:B:313:GLU:HB2	7:B:675:HOH:O	2.12	0.50
1:A:113:GLN:HG2	7:A:753:HOH:O	2.12	0.49
1:A:227:ARG:NE	7:A:666:HOH:O	2.39	0.48
1:A:183:VAL:O	1:A:210:GLN:HG2	2.14	0.47
1:B:141:GLU:O	1:B:145:ASP:HB2	2.14	0.47
1:A:48:SER:O	1:A:52:VAL:HG23	2.14	0.47
1:A:115:LEU:N	1:A:116:PRO:CD	2.78	0.47
1:A:319:CYS:HB3	5:A:404:HF2:HBA	1.93	0.47
5:A:404:HF2:CD1	5:A:404:HF2:C	2.93	0.47
1:A:120:ARG:NH2	1:B:57:HIS:CD2	2.83	0.47
1:B:31:TRP:HB2	1:B:36:LEU:HD12	1.95	0.47

Continued on next page...

Continued from previous page...

Atom-1	Atom-2	Interatomic distance (Å)	Clash overlap (Å)
1:A:113:GLN:OE1	7:A:550:HOH:O	2.20	0.46
1:B:181:PRO:HA	7:B:598:HOH:O	2.14	0.46
1:A:291:PHE:CD2	1:A:302:LEU:HD11	2.51	0.46
1:B:246:TRP:CH2	1:B:307:GLU:HB3	2.51	0.46
1:B:240:MET:CE	2:B:401:SAH:O	2.64	0.45
1:B:75:ARG:NH2	7:B:535:HOH:O	2.50	0.45
1:A:106:GLU:HG3	1:A:106:GLU:O	2.18	0.44
1:B:202:VAL:HG13	1:B:207:PHE:HB2	2.00	0.44
1:B:248:ARG:O	1:B:251:CYS:N	2.51	0.44
1:B:225:SER:O	1:B:226:ALA:CB	2.66	0.43
1:B:280:PRO:HG2	1:B:283:GLU:OE1	2.18	0.43
1:B:308:TRP:O	1:B:311:VAL:HG12	2.18	0.43
1:B:259:ARG:HA	1:B:259:ARG:HD3	1.63	0.43
1:B:319:CYS:HA	1:B:336:LEU:HD23	2.00	0.43
1:B:91:ASN:O	1:B:94:ARG:HD3	2.19	0.43
1:A:58:GLU:N	1:A:59:PRO:CD	2.81	0.42
1:A:259:ARG:HA	1:A:259:ARG:HD3	1.70	0.42
1:A:201:GLU:OE2	1:A:205:LYS:NZ	2.52	0.42
5:A:404:HF2:HD1	5:A:404:HF2:C	2.50	0.42
1:B:106:GLU:OE1	1:B:109:ARG:NH1	2.52	0.42
1:B:117:ASN:O	1:B:118:GLU:C	2.58	0.42
1:B:96:LEU:HD13	1:B:287:PHE:HB2	2.02	0.41
1:A:289:LEU:HD21	1:B:67:ALA:HA	2.03	0.41
1:A:67:ALA:HA	1:B:289:LEU:HD21	2.01	0.41
1:B:328:LEU:HD12	1:B:328:LEU:HA	1.92	0.41
1:B:38:GLU:OE1	1:B:53:ARG:NH2	2.54	0.41
1:A:162:VAL:HG11	1:A:176:ILE:HG21	2.02	0.41
1:B:198:ALA:HB1	1:B:213:PHE:CZ	2.56	0.41
1:B:149:TRP:HA	1:B:149:TRP:CE3	2.56	0.40
1:B:326:ASP:O	1:B:327:SER:HB2	2.21	0.40
1:A:141:GLU:O	1:A:145:ASP:HB2	2.22	0.40
1:A:215:ARG:HD3	7:A:613:HOH:O	2.22	0.40
1:A:291:PHE:CE2	1:A:302:LEU:HD11	2.57	0.40

There are no symmetry-related clashes.

5.3 Torsion angles [i](#)

5.3.1 Protein backbone [i](#)

In the following table, the Percentiles column shows the percent Ramachandran outliers of the chain as a percentile score with respect to all X-ray entries followed by that with respect to entries of similar resolution.

The Analysed column shows the number of residues for which the backbone conformation was analysed, and the total number of residues.

Mol	Chain	Analysed	Favoured	Allowed	Outliers	Percentiles	
1	A	332/357 (93%)	322 (97%)	9 (3%)	1 (0%)	41	46
1	B	336/357 (94%)	314 (94%)	18 (5%)	4 (1%)	13	10
All	All	668/714 (94%)	636 (95%)	27 (4%)	5 (1%)	22	22

All (5) Ramachandran outliers are listed below:

Mol	Chain	Res	Type
1	B	226	ALA
1	A	6	SER
1	B	1	MET
1	B	214	VAL
1	B	287	PHE

5.3.2 Protein sidechains [i](#)

In the following table, the Percentiles column shows the percent sidechain outliers of the chain as a percentile score with respect to all X-ray entries followed by that with respect to entries of similar resolution.

The Analysed column shows the number of residues for which the sidechain conformation was analysed, and the total number of residues.

Mol	Chain	Analysed	Rotameric	Outliers	Percentiles	
1	A	264/284 (93%)	254 (96%)	10 (4%)	33	42
1	B	268/284 (94%)	253 (94%)	15 (6%)	21	25
All	All	532/568 (94%)	507 (95%)	25 (5%)	26	33

All (25) residues with a non-rotameric sidechain are listed below:

Mol	Chain	Res	Type
1	A	5	VAL

Continued on next page...

Continued from previous page...

Mol	Chain	Res	Type
1	A	45	LEU
1	A	80	THR
1	A	184	ARG
1	A	209	ASP
1	A	212	SER
1	A	225	SER
1	A	247	PRO
1	A	259	ARG
1	A	302	LEU
1	B	0	HIS
1	B	1	MET
1	B	3	THR
1	B	45	LEU
1	B	47	VAL
1	B	48	SER
1	B	109	ARG
1	B	137	ARG
1	B	167	SER
1	B	189	ASP
1	B	212	SER
1	B	214	VAL
1	B	215	ARG
1	B	249	GLU
1	B	259	ARG

Some sidechains can be flipped to improve hydrogen bonding and reduce clashes. All (8) such sidechains are listed below:

Mol	Chain	Res	Type
1	A	54	HIS
1	A	113	GLN
1	A	117	ASN
1	A	250	ASN
1	B	0	HIS
1	B	113	GLN
1	B	117	ASN
1	B	210	GLN

5.3.3 RNA ⓘ

There are no RNA molecules in this entry.

5.4 Non-standard residues in protein, DNA, RNA chains [i](#)

There are no non-standard protein/DNA/RNA residues in this entry.

5.5 Carbohydrates [i](#)

There are no carbohydrates in this entry.

5.6 Ligand geometry [i](#)

Of 12 ligands modelled in this entry, 6 are monoatomic - leaving 6 for Mogul analysis.

In the following table, the Counts columns list the number of bonds (or angles) for which Mogul statistics could be retrieved, the number of bonds (or angles) that are observed in the model and the number of bonds (or angles) that are defined in the Chemical Component Dictionary. The Link column lists molecule types, if any, to which the group is linked. The Z score for a bond length (or angle) is the number of standard deviations the observed value is removed from the expected value. A bond length (or angle) with $|Z| > 2$ is considered an outlier worth inspection. RMSZ is the root-mean-square of all Z scores of the bond lengths (or angles).

Mol	Type	Chain	Res	Link	Bond lengths			Bond angles		
					Counts	RMSZ	# $ Z > 2$	Counts	RMSZ	# $ Z > 2$
3	M74	B	402	4	10,13,13	0.88	0	14,17,17	1.19	1 (7%)
2	SAH	B	401	-	21,28,28	1.06	1 (4%)	20,40,40	1.90	5 (25%)
5	HF2	A	404	-	9,12,12	0.81	0	12,15,15	2.34	3 (25%)
5	HF2	B	404	-	9,12,12	0.55	0	12,15,15	2.75	3 (25%)
2	SAH	A	401	-	21,28,28	1.21	4 (19%)	20,40,40	2.07	6 (30%)
3	M74	A	402	4	10,13,13	0.95	0	14,17,17	1.55	4 (28%)

In the following table, the Chirals column lists the number of chiral outliers, the number of chiral centers analysed, the number of these observed in the model and the number defined in the Chemical Component Dictionary. Similar counts are reported in the Torsion and Rings columns. '-' means no outliers of that kind were identified.

Mol	Type	Chain	Res	Link	Chirals	Torsions	Rings
3	M74	B	402	4	-	0/8/12/12	0/1/1/1
2	SAH	B	401	-	-	5/7/31/31	0/3/3/3
5	HF2	A	404	-	-	4/4/8/8	0/1/1/1
5	HF2	B	404	-	-	2/4/8/8	0/1/1/1
2	SAH	A	401	-	-	4/7/31/31	0/3/3/3
3	M74	A	402	4	-	2/8/12/12	0/1/1/1

All (5) bond length outliers are listed below:

Mol	Chain	Res	Type	Atoms	Z	Observed(Å)	Ideal(Å)
2	B	401	SAH	C5-C4	2.21	1.46	1.40
2	A	401	SAH	C4-N3	-2.19	1.32	1.35
2	A	401	SAH	C5-C4	2.14	1.46	1.40
2	A	401	SAH	O4'-C1'	2.14	1.44	1.41
2	A	401	SAH	C2-N3	2.02	1.35	1.32

All (22) bond angle outliers are listed below:

Mol	Chain	Res	Type	Atoms	Z	Observed(°)	Ideal(°)
5	A	404	HF2	CG-CB-CA	6.33	123.56	113.71
5	B	404	HF2	CB-CA-C	6.28	119.09	111.10
5	B	404	HF2	CG-CB-CA	5.49	122.25	113.71
2	A	401	SAH	N3-C2-N1	-4.73	121.29	128.68
2	B	401	SAH	N3-C2-N1	-4.53	121.60	128.68
2	A	401	SAH	C5'-SD-CG	-4.45	88.93	102.27
5	B	404	HF2	OA-CA-CB	-3.66	100.45	108.50
2	B	401	SAH	C1'-N9-C4	-3.55	120.41	126.64
2	B	401	SAH	C2-N1-C6	3.36	124.51	118.75
2	A	401	SAH	CB-CG-SD	-3.32	105.87	113.31
2	B	401	SAH	N6-C6-N1	3.29	125.39	118.57
3	A	402	M74	O2-CA-C	-3.03	103.81	111.10
5	A	404	HF2	CB-CG-CD2	-2.99	114.97	120.91
3	B	402	M74	C-CA-CB	2.90	119.34	113.11
2	B	401	SAH	CB-CG-SD	-2.52	107.65	113.31
2	A	401	SAH	C5-C6-N6	-2.27	116.90	120.35
3	A	402	M74	C-CA-CB	2.20	117.83	113.11
3	A	402	M74	CG-CB-CA	2.18	118.56	111.70
2	A	401	SAH	C1'-N9-C4	-2.16	122.84	126.64
3	A	402	M74	CD1-CG-CD2	-2.11	115.66	118.29
5	A	404	HF2	CD2-CG-CD1	2.09	121.46	118.17
2	A	401	SAH	N6-C6-N1	2.07	122.86	118.57

There are no chirality outliers.

All (17) torsion outliers are listed below:

Mol	Chain	Res	Type	Atoms
2	B	401	SAH	N-CA-CB-CG
2	B	401	SAH	C-CA-CB-CG
2	B	401	SAH	O4'-C4'-C5'-SD
2	B	401	SAH	C3'-C4'-C5'-SD
5	A	404	HF2	C-CA-CB-CG

Continued on next page...

Continued from previous page...

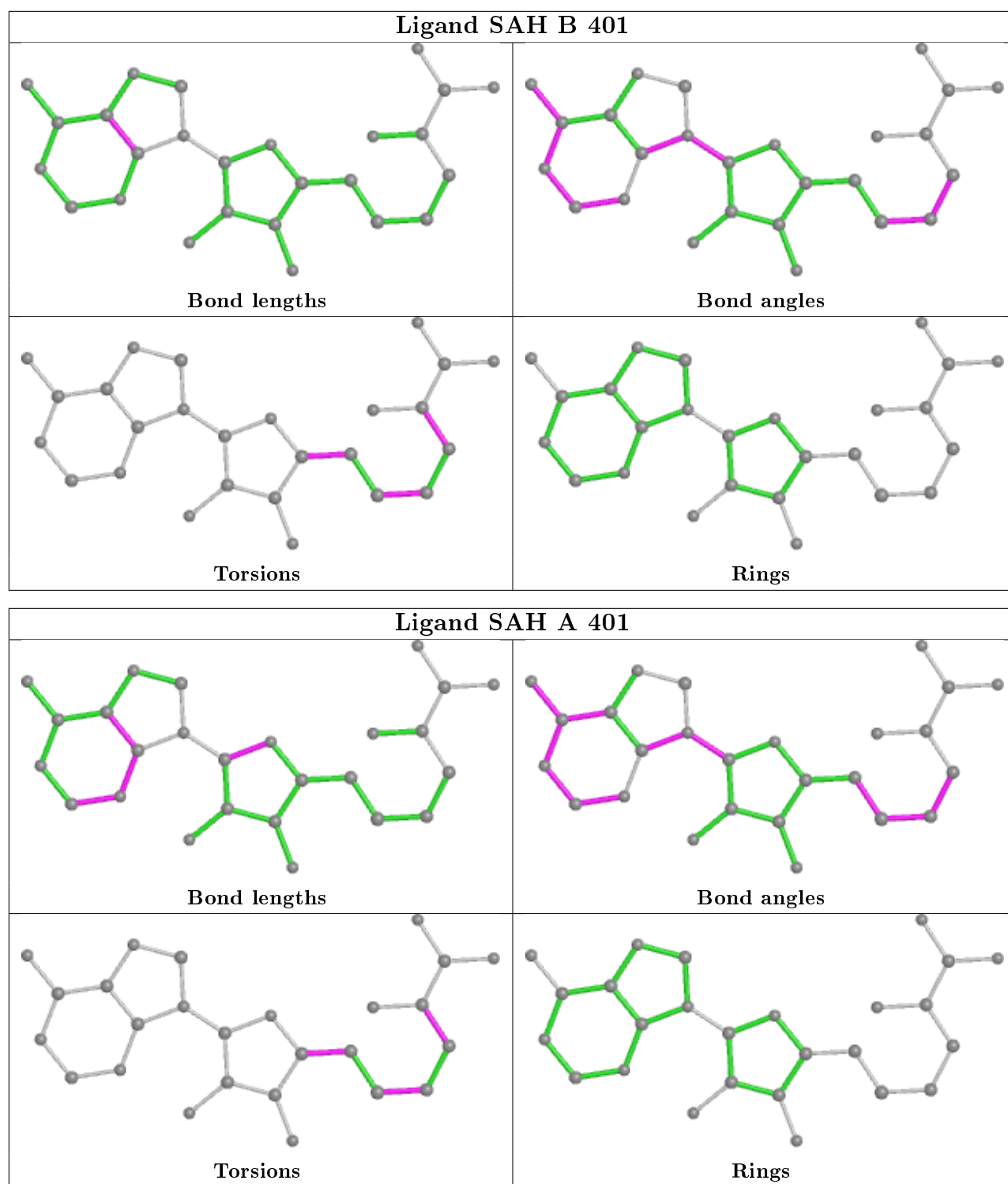
Mol	Chain	Res	Type	Atoms
5	A	404	HF2	OA-CA-CB-CG
5	B	404	HF2	C-CA-CB-CG
2	A	401	SAH	N-CA-CB-CG
2	A	401	SAH	C-CA-CB-CG
5	A	404	HF2	CA-CB-CG-CD2
5	A	404	HF2	CA-CB-CG-CD1
2	A	401	SAH	O4'-C4'-C5'-SD
2	B	401	SAH	CB-CG-SD-C5'
2	A	401	SAH	CB-CG-SD-C5'
3	A	402	M74	O1-CB-CG-CD2
3	A	402	M74	O1-CB-CG-CD1
5	B	404	HF2	OA-CA-CB-CG

There are no ring outliers.

4 monomers are involved in 15 short contacts:

Mol	Chain	Res	Type	Clashes	Symm-Clashes
3	B	402	M74	1	0
2	B	401	SAH	1	0
5	A	404	HF2	8	0
5	B	404	HF2	5	0

The following is a two-dimensional graphical depiction of Mogul quality analysis of bond lengths, bond angles, torsion angles, and ring geometry for all instances of the Ligand of Interest. In addition, ligands with molecular weight > 250 and outliers as shown on the validation Tables will also be included. For torsion angles, if less than 5% of the Mogul distribution of torsion angles is within 10 degrees of the torsion angle in question, then that torsion angle is considered an outlier. Any bond that is central to one or more torsion angles identified as an outlier by Mogul will be highlighted in the graph. For rings, the root-mean-square deviation (RMSD) between the ring in question and similar rings identified by Mogul is calculated over all ring torsion angles. If the average RMSD is greater than 60 degrees and the minimal RMSD between the ring in question and any Mogul-identified rings is also greater than 60 degrees, then that ring is considered an outlier. The outliers are highlighted in purple. The color gray indicates Mogul did not find sufficient equivalents in the CSD to analyse the geometry.



5.7 Other polymers [i](#)

There are no such residues in this entry.

5.8 Polymer linkage issues ⓘ

There are no chain breaks in this entry.

6 Fit of model and data [i](#)

6.1 Protein, DNA and RNA chains [i](#)

In the following table, the column labelled ‘#RSRZ> 2’ contains the number (and percentage) of RSRZ outliers, followed by percent RSRZ outliers for the chain as percentile scores relative to all X-ray entries and entries of similar resolution. The OWAB column contains the minimum, median, 95th percentile and maximum values of the occupancy-weighted average B-factor per residue. The column labelled ‘Q< 0.9’ lists the number of (and percentage) of residues with an average occupancy less than 0.9.

Mol	Chain	Analysed	<RSRZ>	#RSRZ>2	OWAB(Å ²)	Q<0.9
1	A	333/357 (93%)	-0.41	2 (0%) 89 88	13, 26, 53, 84	0
1	B	338/357 (94%)	0.03	13 (3%) 40 38	16, 38, 79, 106	0
All	All	671/714 (93%)	-0.19	15 (2%) 62 59	13, 31, 70, 106	0

All (15) RSRZ outliers are listed below:

Mol	Chain	Res	Type	RSRZ
1	B	225	SER	4.1
1	B	209	ASP	4.0
1	B	226	ALA	3.0
1	B	197	MET	2.9
1	B	192	ASP	2.8
1	B	206	GLY	2.7
1	B	203	ALA	2.7
1	B	156	GLY	2.6
1	B	223	GLN	2.4
1	B	5	VAL	2.4
1	B	202	VAL	2.4
1	B	205	LYS	2.3
1	B	123	LYS	2.3
1	A	22	LEU	2.2
1	A	227	ARG	2.2

6.2 Non-standard residues in protein, DNA, RNA chains [i](#)

There are no non-standard protein/DNA/RNA residues in this entry.

6.3 Carbohydrates [i](#)

There are no carbohydrates in this entry.

6.4 Ligands

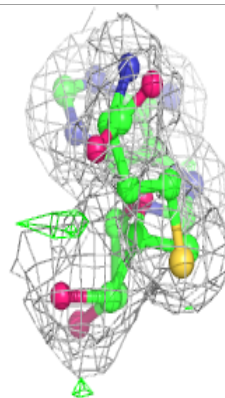
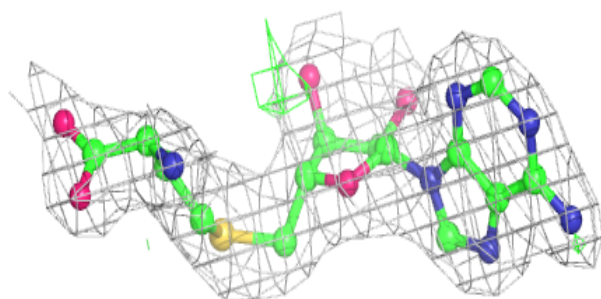
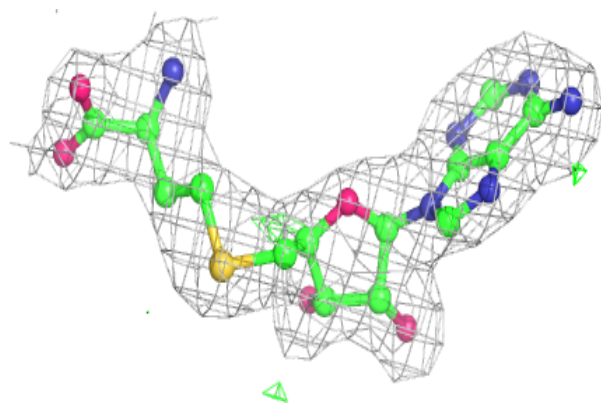
In the following table, the Atoms column lists the number of modelled atoms in the group and the number defined in the chemical component dictionary. The B-factors column lists the minimum, median, 95th percentile and maximum values of B factors of atoms in the group. The column labelled 'Q< 0.9' lists the number of atoms with occupancy less than 0.9.

Mol	Type	Chain	Res	Atoms	RSCC	RSR	B-factors(Å ²)	Q<0.9
5	HF2	B	404	12/12	0.91	0.12	28,34,53,58	0
2	SAH	B	401	26/26	0.92	0.11	32,43,54,63	0
5	HF2	A	404	12/12	0.93	0.12	34,39,44,45	0
6	CA	A	406	1/1	0.94	0.05	51,51,51,51	0
3	M74	B	402	13/13	0.96	0.16	38,61,67,68	0
2	SAH	A	401	26/26	0.96	0.09	18,21,34,34	0
6	CA	B	405	1/1	0.96	0.04	46,46,46,46	0
3	M74	A	402	13/13	0.96	0.14	37,46,60,61	0
6	CA	A	405	1/1	0.99	0.04	38,38,38,38	0
6	CA	A	407	1/1	0.99	0.11	21,21,21,21	0
4	FE	B	403	1/1	0.99	0.10	38,38,38,38	0
4	FE	A	403	1/1	1.00	0.06	22,22,22,22	0

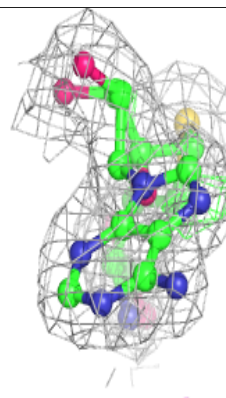
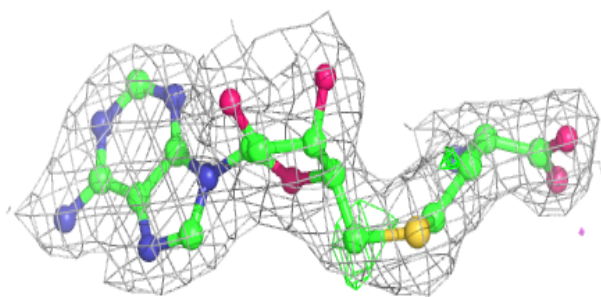
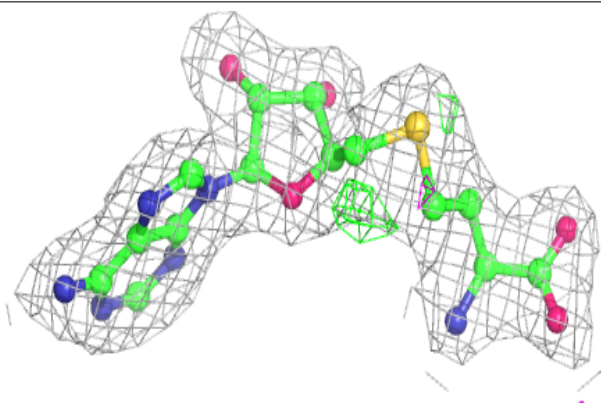
The following is a graphical depiction of the model fit to experimental electron density of all instances of the Ligand of Interest. In addition, ligands with molecular weight > 250 and outliers as shown on the geometry validation Tables will also be included. Each fit is shown from different orientation to approximate a three-dimensional view.

Electron density around SAH B 401:

$2mF_o-DF_c$ (at 0.7 rmsd) in gray
 mF_o-DF_c (at 3 rmsd) in purple (negative)
and green (positive)

**Electron density around SAH A 401:**

$2mF_o-DF_c$ (at 0.7 rmsd) in gray
 mF_o-DF_c (at 3 rmsd) in purple (negative)
and green (positive)



6.5 Other polymers [i](#)

There are no such residues in this entry.