



Full wwPDB X-ray Structure Validation Report ⓘ

May 14, 2020 – 04:31 am BST

PDB ID : 1M8E
Title : inducible nitric oxide synthase with 7-nitroindazole bound
Authors : Rosenfeld, R.J.; Garcin, E.D.; Panda, K.; Andersson, G.; Aberg, A.; Wallace, A.V.; Stuehr, D.J.; Tainer, J.A.; Getzoff, E.D.
Deposited on : 2002-07-24
Resolution : 2.90 Å(reported)

This is a Full wwPDB X-ray Structure Validation Report for a publicly released PDB entry.

We welcome your comments at validation@mail.wwpdb.org

A user guide is available at

<https://www.wwpdb.org/validation/2017/XrayValidationReportHelp>

with specific help available everywhere you see the ⓘ symbol.

The following versions of software and data (see [references ⓘ](#)) were used in the production of this report:

MolProbity : 4.02b-467
Mogul : 1.8.5 (274361), CSD as541be (2020)
Xtriage (Phenix) : **NOT EXECUTED**
EDS : **NOT EXECUTED**
buster-report : 1.1.7 (2018)
Percentile statistics : 20191225.v01 (using entries in the PDB archive December 25th 2019)
Ideal geometry (proteins) : Engh & Huber (2001)
Ideal geometry (DNA, RNA) : Parkinson et al. (1996)
Validation Pipeline (wwPDB-VP) : 2.11

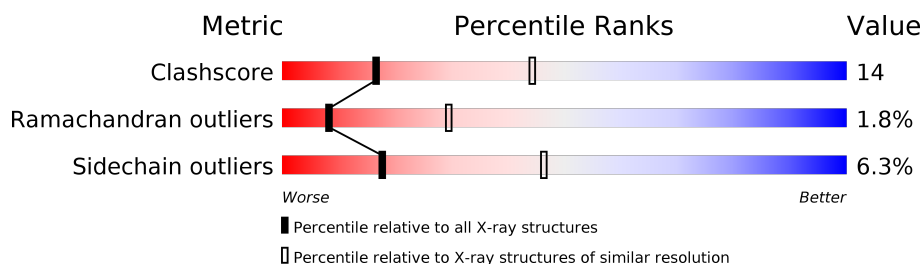
1 Overall quality at a glance

The following experimental techniques were used to determine the structure:

X-RAY DIFFRACTION

The reported resolution of this entry is 2.90 Å.

Percentile scores (ranging between 0-100) for global validation metrics of the entry are shown in the following graphic. The table shows the number of entries on which the scores are based.



Metric	Whole archive (#Entries)	Similar resolution (#Entries, resolution range(Å))
Clashscore	141614	2172 (2.90-2.90)
Ramachandran outliers	138981	2115 (2.90-2.90)
Sidechain outliers	138945	2117 (2.90-2.90)

The table below summarises the geometric issues observed across the polymeric chains and their fit to the electron density. The red, orange, yellow and green segments on the lower bar indicate the fraction of residues that contain outliers for ≥ 3 , 2, 1 and 0 types of geometric quality criteria respectively. A grey segment represents the fraction of residues that are not modelled. The numeric value for each fraction is indicated below the corresponding segment, with a dot representing fractions $\leq 5\%$.

Note EDS was not executed.

Mol	Chain	Length	Quality of chain
1	A	434	
1	B	434	

The following table lists non-polymeric compounds, carbohydrate monomers and non-standard residues in protein, DNA, RNA chains that are outliers for geometric or electron-density-fit criteria:

Mol	Type	Chain	Res	Chirality	Geometry	Clashes	Electron density
3	H4B	A	902	X	-	-	-
3	H4B	B	903	X	-	-	-
4	7NI	B	907[B]	-	-	X	-

i

In the tables below, the ZeroOcc column contains the number of atoms modelled with zero occupancy, the AltConf column contains the number of residues with at least one atom in alternate conformation and the Trace column contains the number of residues modelled with at most 2 atoms.

- Molecule 1 is a protein called inducible Nitric oxide synthase.

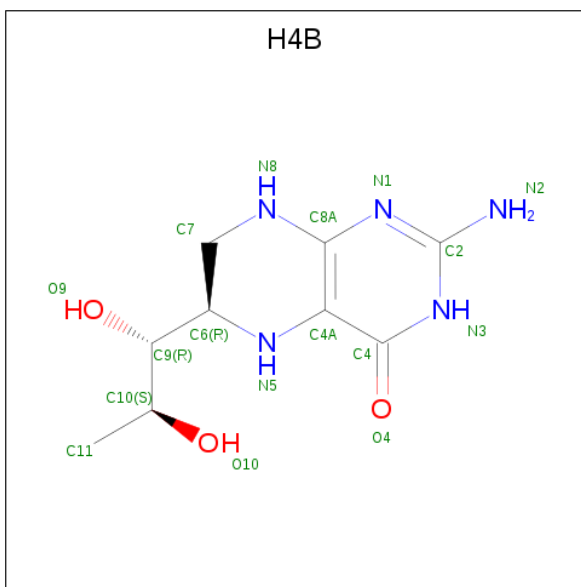
Mol	Chain	Residues	Atoms					ZeroOcc	AltConf	Trace
1	A	412	Total 3361	C 2155	N 579	O 607	S 20	0	0	0
1	B	411	Total 3353	C 2151	N 578	O 604	S 20	0	0	0

- Molecule 2 is PROTOPORPHYRIN IX CONTAINING FE (three-letter code: HEM) (formula: $C_{34}H_{32}FeN_4O_4$).



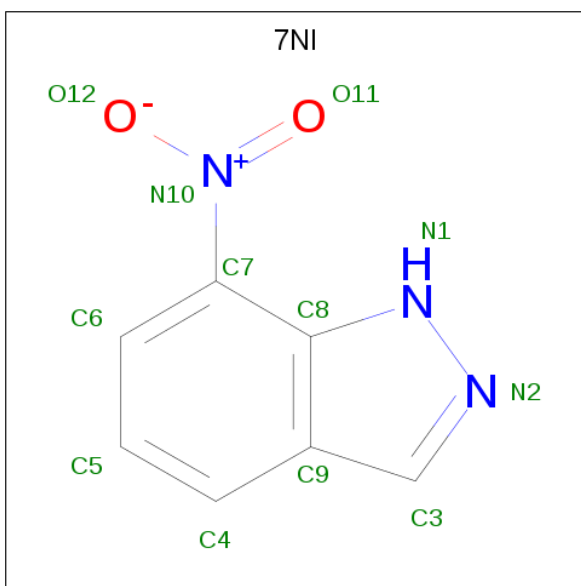
Mol	Chain	Residues	Atoms					ZeroOcc	AltConf
2	A	1	Total 43	C 34	Fe 1	N 4	O 4	0	0
2	B	1	Total 43	C 34	Fe 1	N 4	O 4	0	0

- Molecule 3 is 5,6,7,8-TETRAHYDROBIOPTERIN (three-letter code: H4B) (formula: $\text{C}_9\text{H}_{15}\text{N}_5\text{O}_3$).



Mol	Chain	Residues	Atoms				ZeroOcc	AltConf
3	A	1	Total	C	N	O	0	0
			17	9	5	3		
3	B	1	Total	C	N	O	0	0
			17	9	5	3		

- Molecule 4 is 7-NITROINDAZOLE (three-letter code: 7NI) (formula: $C_7H_5N_3O_2$).



Mol	Chain	Residues	Atoms				ZeroOcc	AltConf
4	A	1	Total	C	N	O	0	1
			24	14	6	4		
4	B	1	Total	C	N	O	0	1
			24	14	6	4		

- Molecule 5 is water.

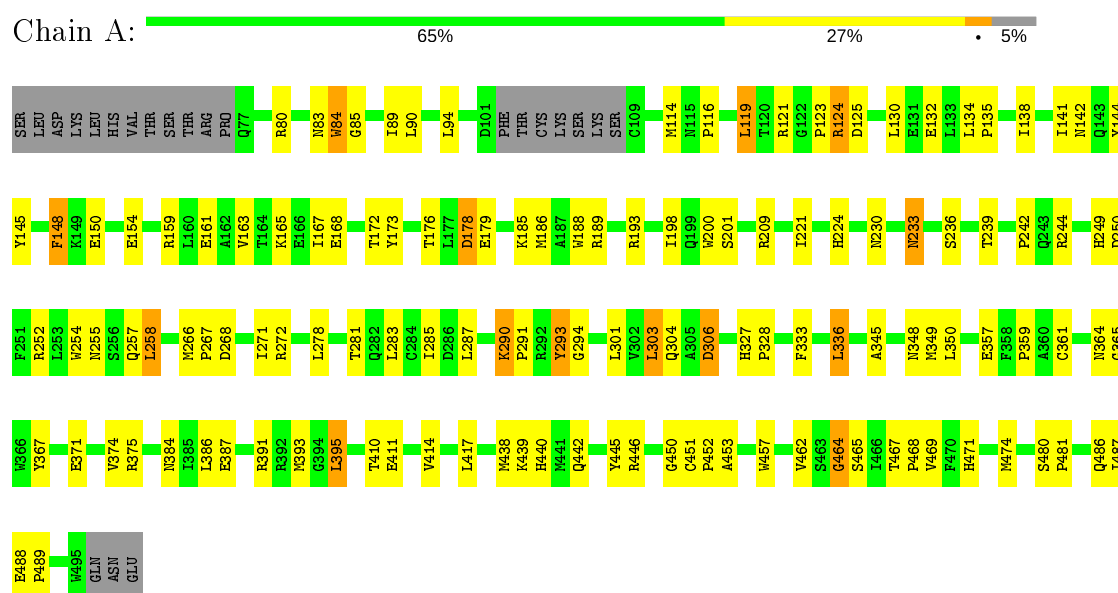
Mol	Chain	Residues	Atoms		ZeroOcc	AltConf
5	A	65	Total 65	O 65	0	0
5	B	103	Total 103	O 103	0	0

3 Residue-property plots

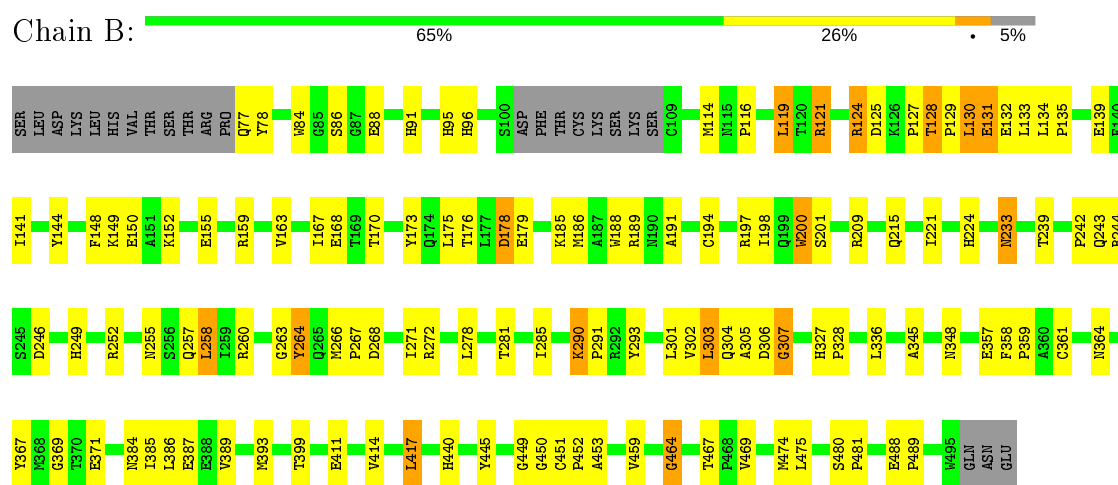
These plots are drawn for all protein, RNA and DNA chains in the entry. The first graphic for a chain summarises the proportions of the various outlier classes displayed in the second graphic. The second graphic shows the sequence view annotated by issues in geometry. Residues are color-coded according to the number of geometric quality criteria for which they contain at least one outlier: green = 0, yellow = 1, orange = 2 and red = 3 or more. Stretches of 2 or more consecutive residues without any outlier are shown as a green connector. Residues present in the sample, but not in the model, are shown in grey.

Note EDS was not executed.

- Molecule 1: inducible Nitric oxide synthase



- Molecule 1: inducible Nitric oxide synthase



4 Data and refinement statistics

Xtriage (Phenix) and EDS were not executed - this section is therefore incomplete.

Property	Value	Source
Space group	P 61 2 2	Depositor
Cell constants a, b, c, α , β , γ	213.07Å 213.07Å 115.78Å 90.00° 90.00° 120.00°	Depositor
Resolution (Å)	19.91 – 2.90	Depositor
% Data completeness (in resolution range)	99.1 (19.91-2.90)	Depositor
R_{merge}	0.05	Depositor
R_{sym}	0.05	Depositor
Refinement program	CNS	Depositor
R, R_{free}	0.235 , 0.280	Depositor
Estimated twinning fraction	No twinning to report.	Xtriage
Total number of atoms	7050	wwPDB-VP
Average B, all atoms (Å ²)	55.0	wwPDB-VP

5 Model quality

5.1 Standard geometry

Bond lengths and bond angles in the following residue types are not validated in this section: HEM, 7NI, H4B

The Z score for a bond length (or angle) is the number of standard deviations the observed value is removed from the expected value. A bond length (or angle) with $|Z| > 5$ is considered an outlier worth inspection. RMSZ is the root-mean-square of all Z scores of the bond lengths (or angles).

Mol	Chain	Bond lengths		Bond angles	
		RMSZ	# Z >5	RMSZ	# Z >5
1	A	0.44	0/3459	0.65	0/4703
1	B	0.44	0/3451	0.65	0/4692
All	All	0.44	0/6910	0.65	0/9395

There are no bond length outliers.

There are no bond angle outliers.

There are no chirality outliers.

There are no planarity outliers.

5.2 Too-close contacts

In the following table, the Non-H and H(model) columns list the number of non-hydrogen atoms and hydrogen atoms in the chain respectively. The H(added) column lists the number of hydrogen atoms added and optimized by MolProbity. The Clashes column lists the number of clashes within the asymmetric unit, whereas Symm-Clashes lists symmetry related clashes.

Mol	Chain	Non-H	H(model)	H(added)	Clashes	Symm-Clashes
1	A	3361	0	3256	93	0
1	B	3353	0	3252	92	0
2	A	43	0	30	3	0
2	B	43	0	30	6	0
3	A	17	0	14	1	0
3	B	17	0	14	0	0
4	A	24	0	10	3	0
4	B	24	0	10	8	0
5	A	65	0	0	4	0
5	B	103	0	0	5	0
All	All	7050	0	6616	192	0

The all-atom clashscore is defined as the number of clashes found per 1000 atoms (including hydrogen atoms). The all-atom clashscore for this structure is 14.

All (192) close contacts within the same asymmetric unit are listed below, sorted by their clash magnitude.

Atom-1	Atom-2	Interatomic distance (Å)	Clash overlap (Å)
2:B:901:HEM:HBA1	4:B:907[B]:7NI:C4	2.11	0.80
2:B:901:HEM:HBA1	4:B:907[B]:7NI:H41	1.63	0.79
1:A:290:LYS:H	1:A:290:LYS:HE2	1.49	0.78
1:B:290:LYS:HE2	1:B:290:LYS:H	1.51	0.75
1:A:221:ILE:HG21	1:A:301:LEU:HD21	1.71	0.73
1:A:252:ARG:HD3	1:A:359:PRO:HB2	1.70	0.73
1:A:271:ILE:HD13	1:A:278:LEU:HD11	1.70	0.72
1:A:134:LEU:O	1:A:138:ILE:HG12	1.90	0.71
1:A:141:ILE:HD11	1:A:163:VAL:HG11	1.72	0.71
1:A:272:ARG:HH21	1:A:294:GLY:HA2	1.56	0.70
1:A:266:MET:SD	1:A:272:ARG:HD3	2.31	0.69
1:B:252:ARG:HD3	1:B:359:PRO:HB2	1.74	0.68
1:B:221:ILE:HG21	1:B:301:LEU:HD21	1.75	0.68
1:A:188:TRP:CE3	1:A:200:TRP:HA	2.29	0.67
1:B:252:ARG:NH2	1:B:489:PRO:HD3	2.12	0.65
1:B:371:GLU:HG2	4:B:907[B]:7NI:H31	1.76	0.65
1:B:188:TRP:CE3	1:B:200:TRP:HA	2.33	0.64
1:B:149:LYS:HD3	1:B:150:GLU:N	2.13	0.63
1:B:290:LYS:H	1:B:290:LYS:CE	2.11	0.62
1:A:290:LYS:CE	1:A:290:LYS:H	2.12	0.62
1:A:163:VAL:O	1:A:167:ILE:HG13	2.00	0.62
1:B:258:LEU:HB2	1:B:345:ALA:HB3	1.82	0.61
1:B:266:MET:CE	1:B:272:ARG:HE	2.12	0.61
1:B:129:PRO:HG2	1:B:132:GLU:HG2	1.83	0.60
1:B:459:VAL:HG22	1:B:469:VAL:HG23	1.84	0.60
1:B:252:ARG:HH21	1:B:489:PRO:HD3	1.67	0.59
2:A:901:HEM:HBA1	4:A:906[B]:7NI:H41	1.83	0.59
1:A:350:LEU:HB2	1:A:486:GLN:NE2	2.17	0.59
1:B:464:GLY:O	1:B:467:THR:HB	2.02	0.59
1:A:439:LYS:O	1:A:442:GLN:HG2	2.03	0.59
2:A:901:HEM:HMC2	2:A:901:HEM:HBC2	1.85	0.58
1:B:453:ALA:HB3	1:B:474:MET:HB2	1.86	0.58
1:B:84:TRP:NE1	1:B:114:MET:HG3	2.19	0.58
1:A:209:ARG:O	1:A:242:PRO:HG3	2.03	0.58
1:A:453:ALA:HB3	1:A:474:MET:HB2	1.85	0.58
1:A:438:MET:HG3	1:A:468:PRO:HB2	1.86	0.57
1:B:124:ARG:HH22	1:B:128:THR:HB	1.67	0.57

Continued on next page...

Continued from previous page...

Atom-1	Atom-2	Interatomic distance (Å)	Clash overlap (Å)
1:A:304:GLN:O	1:A:304:GLN:HG3	2.02	0.57
1:A:159:ARG:O	1:A:163:VAL:HG23	2.05	0.57
1:A:116:PRO:HG2	1:A:119:LEU:HB2	1.87	0.56
1:B:304:GLN:O	1:B:304:GLN:HG3	2.04	0.56
1:A:281:THR:O	1:A:285:ILE:HG12	2.07	0.55
2:A:901:HEM:HH1	2:A:901:HEM:HHB2	1.89	0.55
1:B:144:TYR:OH	1:B:178:ASP:HB3	2.07	0.55
1:A:176:THR:OG1	1:A:179:GLU:HG3	2.06	0.54
1:A:185:LYS:HE2	1:A:201:SER:O	2.06	0.54
1:A:258:LEU:HB2	1:A:345:ALA:HB3	1.89	0.54
1:A:132:GLU:O	1:A:135:PRO:HD2	2.08	0.54
1:B:209:ARG:O	1:B:242:PRO:HG3	2.08	0.53
1:A:411:GLU:O	1:A:414:VAL:HG22	2.07	0.53
1:B:77:GLN:O	1:B:96:HIS:HE1	1.92	0.53
1:A:464:GLY:O	1:A:467:THR:HB	2.08	0.53
1:B:266:MET:HE2	1:B:272:ARG:HE	1.74	0.52
1:A:293:TYR:CD2	1:B:267:PRO:HB3	2.45	0.52
1:A:438:MET:HE3	1:A:469:VAL:HA	1.91	0.52
1:B:141:ILE:HD11	1:B:163:VAL:HG11	1.90	0.52
1:B:281:THR:O	1:B:285:ILE:HG12	2.10	0.52
1:B:411:GLU:O	1:B:414:VAL:HG22	2.10	0.52
1:B:264:TYR:CE1	1:B:293:TYR:HA	2.44	0.52
1:B:116:PRO:HG2	1:B:119:LEU:HB2	1.92	0.52
1:B:159:ARG:O	1:B:163:VAL:HG23	2.10	0.52
1:A:393:MET:HB2	1:A:395:LEU:HD22	1.92	0.51
1:A:257:GLN:HB2	1:A:345:ALA:O	2.11	0.51
1:A:393:MET:HE2	1:A:395:LEU:HD21	1.92	0.51
1:B:257:GLN:HB2	1:B:345:ALA:O	2.10	0.51
1:B:163:VAL:HG13	1:B:173:TYR:CD2	2.47	0.50
1:A:123:PRO:HD3	1:A:487:ILE:HD12	1.92	0.50
1:B:185:LYS:HE2	1:B:201:SER:O	2.11	0.50
1:B:371:GLU:HG2	4:B:907[B]:7NI:C3	2.41	0.50
1:A:148:PHE:N	1:A:148:PHE:CD2	2.78	0.50
1:B:290:LYS:NZ	5:B:1080:HOH:O	2.45	0.50
1:A:224:HIS:HE1	1:A:364:ASN:OD1	1.95	0.50
1:B:198:ILE:HB	1:B:440:HIS:HB2	1.94	0.50
1:A:80:ARG:NE	1:A:89:ILE:HG21	2.26	0.49
1:B:290:LYS:H	1:B:290:LYS:CD	2.25	0.49
1:A:186:MET:HE1	1:A:189:ARG:HH11	1.77	0.49
1:A:252:ARG:HH21	1:A:489:PRO:HD3	1.77	0.49
1:B:271:ILE:HD13	1:B:278:LEU:HD11	1.95	0.49

Continued on next page...

Continued from previous page...

Atom-1	Atom-2	Interatomic distance (Å)	Clash overlap (Å)
1:B:393:MET:HE3	1:B:411:GLU:HG3	1.95	0.49
1:A:410:THR:HA	5:A:1350:HOH:O	2.13	0.48
1:B:131:GLU:CD	1:B:131:GLU:H	2.14	0.48
1:B:445:TYR:O	1:B:449:GLY:HA2	2.14	0.48
1:A:465:SER:O	1:A:471:HIS:HE1	1.96	0.48
1:A:349:MET:C	1:A:486:GLN:HE21	2.16	0.48
1:B:243:GLN:HB3	1:B:358:PHE:CE2	2.49	0.48
1:A:188:TRP:CZ3	1:A:200:TRP:HA	2.48	0.48
1:B:445:TYR:CE2	1:B:450:GLY:HA2	2.49	0.48
1:B:197:ARG:NH2	1:B:452:PRO:O	2.46	0.47
1:B:224:HIS:HE1	1:B:364:ASN:OD1	1.98	0.47
1:B:233:ASN:ND2	5:B:1333:HOH:O	2.47	0.47
1:B:385:ILE:O	1:B:389:VAL:HG23	2.15	0.47
1:A:84:TRP:NE1	1:A:114:MET:HG3	2.30	0.47
1:A:186:MET:CE	1:A:189:ARG:HH11	2.28	0.47
1:A:371:GLU:HG2	4:A:906[B]:7NI:H31	1.96	0.47
2:B:901:HEM:HBC2	2:B:901:HEM:HMC1	1.96	0.47
1:A:480:SER:HA	1:A:481:PRO:C	2.35	0.47
2:B:901:HEM:HBA1	4:B:907[B]:7NI:C5	2.43	0.47
1:B:285:ILE:HD11	1:B:291:PRO:HB3	1.97	0.47
1:A:387:GLU:HG3	1:A:391:ARG:NH2	2.30	0.46
1:A:252:ARG:NH2	1:A:489:PRO:HD3	2.30	0.46
1:B:301:LEU:HG	1:B:303:LEU:HD11	1.96	0.46
1:A:290:LYS:CD	1:A:290:LYS:H	2.27	0.46
1:A:350:LEU:HD21	1:A:357:GLU:HB2	1.98	0.46
1:B:302:VAL:C	1:B:303:LEU:HD13	2.35	0.46
1:B:371:GLU:CG	4:B:907[B]:7NI:H31	2.45	0.46
1:A:198:ILE:HG22	5:A:1328:HOH:O	2.16	0.46
1:A:138:ILE:O	1:A:142:ASN:ND2	2.49	0.46
1:A:236:SER:HA	1:A:364:ASN:O	2.16	0.46
1:B:186:MET:O	1:B:189:ARG:HB3	2.16	0.46
1:A:301:LEU:HG	1:A:303:LEU:HD11	1.98	0.46
1:B:176:THR:OG1	1:B:179:GLU:HG3	2.16	0.46
1:B:186:MET:HE1	1:B:200:TRP:CZ3	2.51	0.45
1:A:144:TYR:OH	1:A:178:ASP:HB3	2.16	0.45
1:A:445:TYR:HA	1:A:450:GLY:H	1.81	0.45
1:B:124:ARG:HH11	1:B:124:ARG:HG2	1.81	0.45
1:A:244:ARG:HD2	1:A:357:GLU:OE2	2.16	0.45
1:A:488:GLU:HA	1:A:489:PRO:HD2	1.78	0.45
1:A:438:MET:HE2	1:A:469:VAL:HG12	1.98	0.45
1:B:252:ARG:CD	1:B:359:PRO:HB2	2.46	0.45

Continued on next page...

Continued from previous page...

Atom-1	Atom-2	Interatomic distance (Å)	Clash overlap (Å)
1:B:86:SER:C	1:B:88:GLU:H	2.19	0.45
1:A:186:MET:O	1:A:189:ARG:HB3	2.17	0.45
1:B:327:HIS:CG	1:B:328:PRO:HD2	2.52	0.45
1:A:272:ARG:NH2	1:A:294:GLY:HA2	2.28	0.44
1:A:121:ARG:HD3	1:A:121:ARG:HA	1.81	0.44
1:B:152:LYS:HD2	1:B:155:GLU:OE2	2.17	0.44
1:B:480:SER:HA	1:B:481:PRO:C	2.37	0.44
1:B:194:CYS:HB3	1:B:197:ARG:HD3	1.98	0.44
1:B:263:GLY:O	1:B:278:LEU:HD23	2.18	0.44
1:B:244:ARG:HD2	1:B:357:GLU:OE2	2.17	0.44
1:B:128:THR:HA	1:B:129:PRO:HD2	1.85	0.44
1:A:124:ARG:HH11	1:A:124:ARG:HG2	1.81	0.44
2:B:901:HEM:HBA1	4:B:907[A]:7NI:C5	2.48	0.44
1:B:188:TRP:CZ3	1:B:200:TRP:HA	2.52	0.43
1:A:123:PRO:CD	1:A:487:ILE:HD12	2.48	0.43
1:B:130:LEU:HD21	1:B:168:GLU:HA	2.00	0.43
1:B:121:ARG:HD3	1:B:121:ARG:HA	1.80	0.43
1:B:301:LEU:HD12	1:B:301:LEU:HA	1.85	0.43
1:B:124:ARG:NH1	1:B:124:ARG:HG2	2.34	0.43
2:B:901:HEM:CMC	2:B:901:HEM:HBC2	2.49	0.43
1:A:283:LEU:O	1:A:287:LEU:HG	2.19	0.43
1:A:124:ARG:NH1	1:A:124:ARG:HG2	2.33	0.43
1:B:445:TYR:HA	1:B:450:GLY:H	1.84	0.43
1:A:250:ASP:N	1:A:306:ASP:O	2.52	0.42
1:A:333:PHE:HA	1:A:336:LEU:HD22	2.01	0.42
1:B:77:GLN:HG3	1:B:78:TYR:H	1.84	0.42
1:A:250:ASP:O	1:A:304:GLN:NE2	2.49	0.42
1:A:193:ARG:HD3	1:A:457:TRP:CD2	2.55	0.42
1:A:230:ASN:HB3	1:A:233:ASN:O	2.19	0.42
1:B:133:LEU:HD12	1:B:167:ILE:HG23	2.00	0.42
1:B:417:LEU:HA	1:B:417:LEU:HD12	1.91	0.42
1:B:152:LYS:HB3	1:B:155:GLU:HG3	2.02	0.42
1:A:83:ASN:O	1:A:85:GLY:N	2.53	0.42
1:B:215:GLN:HB2	5:B:1053:HOH:O	2.19	0.42
1:B:488:GLU:HG3	5:B:1115:HOH:O	2.20	0.42
1:A:285:ILE:HD11	1:A:291:PRO:HB3	2.01	0.42
1:B:488:GLU:HA	1:B:489:PRO:HD2	1.73	0.42
1:A:290:LYS:HA	1:A:291:PRO:HD2	1.88	0.42
1:B:78:TYR:CE1	1:B:91:HIS:HD2	2.38	0.42
1:A:165:LYS:O	1:A:168:GLU:HG2	2.20	0.41
1:A:124:ARG:NH2	5:A:1018:HOH:O	2.52	0.41

Continued on next page...

Continued from previous page...

Atom-1	Atom-2	Interatomic distance (Å)	Clash overlap (Å)
1:A:367:TYR:HA	4:A:906[A]:7NI:O12	2.20	0.41
1:A:451:CYS:HA	1:A:452:PRO:HD2	1.95	0.41
1:B:467:THR:CG2	1:B:469:VAL:HG22	2.50	0.41
1:A:172:THR:OG1	1:A:173:TYR:N	2.54	0.41
1:B:239:THR:O	1:B:361:CYS:HA	2.20	0.41
1:A:145:TYR:HE2	1:A:159:ARG:HG2	1.85	0.41
1:A:301:LEU:HD12	1:A:301:LEU:HA	1.92	0.41
1:A:374:VAL:HG11	1:A:462:VAL:HG13	2.02	0.41
1:B:127:PRO:HG3	1:B:246:ASP:HA	2.03	0.41
1:B:305:ALA:O	1:B:307:GLY:N	2.53	0.41
1:B:260:ARG:HG3	5:B:1074:HOH:O	2.20	0.41
1:B:367:TYR:HA	4:B:907[A]:7NI:O12	2.21	0.41
1:A:236:SER:OG	1:A:365:GLY:HA2	2.20	0.41
1:B:77:GLN:HG3	1:B:78:TYR:N	2.35	0.41
1:B:290:LYS:HA	1:B:291:PRO:HD2	1.89	0.41
1:A:198:ILE:HB	1:A:440:HIS:HB2	2.03	0.41
1:B:124:ARG:NH2	1:B:128:THR:HB	2.35	0.41
1:A:163:VAL:HG13	1:A:173:TYR:CD2	2.57	0.40
1:B:134:LEU:HB3	1:B:135:PRO:HD3	2.03	0.40
1:A:267:PRO:HB3	1:B:293:TYR:CD2	2.56	0.40
1:A:239:THR:O	1:A:361:CYS:HA	2.22	0.40
1:A:254:TRP:CE3	1:A:283:LEU:HD21	2.57	0.40
1:A:375:ARG:HH12	3:A:902:H4B:C4	2.34	0.40
1:A:89:ILE:HG22	1:A:90:LEU:N	2.37	0.40
1:B:186:MET:HE1	1:B:189:ARG:HH11	1.85	0.40
1:A:130:LEU:CD1	1:A:130:LEU:H	2.34	0.40
1:A:186:MET:HE1	1:A:200:TRP:CZ3	2.56	0.40
1:A:327:HIS:CG	1:A:328:PRO:HD2	2.56	0.40
1:B:191:ALA:O	1:B:197:ARG:HD3	2.22	0.40
1:B:451:CYS:HA	1:B:452:PRO:HD2	1.94	0.40
1:A:386:LEU:HB2	5:A:1104:HOH:O	2.21	0.40
1:B:186:MET:CE	1:B:189:ARG:HH11	2.34	0.40

There are no symmetry-related clashes.

5.3 Torsion angles

5.3.1 Protein backbone

In the following table, the Percentiles column shows the percent Ramachandran outliers of the chain as a percentile score with respect to all X-ray entries followed by that with respect to entries

of similar resolution.

The Analysed column shows the number of residues for which the backbone conformation was analysed, and the total number of residues.

Mol	Chain	Analysed	Favoured	Allowed	Outliers	Percentiles	
1	A	408/434 (94%)	357 (88%)	44 (11%)	7 (2%)	9	31
1	B	407/434 (94%)	356 (88%)	43 (11%)	8 (2%)	7	27
All	All	815/868 (94%)	713 (88%)	87 (11%)	15 (2%)	8	29

All (15) Ramachandran outliers are listed below:

Mol	Chain	Res	Type
1	A	150	GLU
1	B	306	ASP
1	A	84	TRP
1	B	384	ASN
1	A	306	ASP
1	A	268	ASP
1	B	95	HIS
1	B	268	ASP
1	A	293	TYR
1	A	384	ASN
1	B	200	TRP
1	B	307	GLY
1	B	369	GLY
1	B	464	GLY
1	A	464	GLY

5.3.2 Protein sidechains ⓘ

In the following table, the Percentiles column shows the percent sidechain outliers of the chain as a percentile score with respect to all X-ray entries followed by that with respect to entries of similar resolution.

The Analysed column shows the number of residues for which the sidechain conformation was analysed, and the total number of residues.

Mol	Chain	Analysed	Rotameric	Outliers	Percentiles	
1	A	360/382 (94%)	341 (95%)	19 (5%)	22	54
1	B	359/382 (94%)	333 (93%)	26 (7%)	14	39
All	All	719/764 (94%)	674 (94%)	45 (6%)	18	46

All (45) residues with a non-rotameric sidechain are listed below:

Mol	Chain	Res	Type
1	A	94	LEU
1	A	119	LEU
1	A	124	ARG
1	A	125	ASP
1	A	148	PHE
1	A	154	GLU
1	A	161	GLU
1	A	178	ASP
1	A	233	ASN
1	A	249	HIS
1	A	255	ASN
1	A	258	LEU
1	A	290	LYS
1	A	303	LEU
1	A	336	LEU
1	A	348	ASN
1	A	395	LEU
1	A	417	LEU
1	A	446	ARG
1	B	119	LEU
1	B	121	ARG
1	B	124	ARG
1	B	125	ASP
1	B	128	THR
1	B	130	LEU
1	B	131	GLU
1	B	139	GLU
1	B	148	PHE
1	B	170	THR
1	B	175	LEU
1	B	178	ASP
1	B	233	ASN
1	B	249	HIS
1	B	255	ASN
1	B	258	LEU
1	B	264	TYR
1	B	290	LYS
1	B	303	LEU
1	B	336	LEU
1	B	348	ASN
1	B	386	LEU
1	B	387	GLU

Continued on next page...

Continued from previous page...

Mol	Chain	Res	Type
1	B	399	THR
1	B	417	LEU
1	B	475	LEU

Some sidechains can be flipped to improve hydrogen bonding and reduce clashes. All (20) such sidechains are listed below:

Mol	Chain	Res	Type
1	A	202	ASN
1	A	204	GLN
1	A	224	HIS
1	A	231	ASN
1	A	233	ASN
1	A	348	ASN
1	A	413	ASN
1	A	471	HIS
1	A	486	GLN
1	B	77	GLN
1	B	91	HIS
1	B	95	HIS
1	B	96	HIS
1	B	202	ASN
1	B	204	GLN
1	B	224	HIS
1	B	231	ASN
1	B	233	ASN
1	B	348	ASN
1	B	493	HIS

5.3.3 RNA ⓘ

There are no RNA molecules in this entry.

5.4 Non-standard residues in protein, DNA, RNA chains ⓘ

There are no non-standard protein/DNA/RNA residues in this entry.

5.5 Carbohydrates ⓘ

There are no carbohydrates in this entry.

5.6 Ligand geometry

8 ligands are modelled in this entry.

In the following table, the Counts columns list the number of bonds (or angles) for which Mogul statistics could be retrieved, the number of bonds (or angles) that are observed in the model and the number of bonds (or angles) that are defined in the Chemical Component Dictionary. The Link column lists molecule types, if any, to which the group is linked. The Z score for a bond length (or angle) is the number of standard deviations the observed value is removed from the expected value. A bond length (or angle) with $|Z| > 2$ is considered an outlier worth inspection. RMSZ is the root-mean-square of all Z scores of the bond lengths (or angles).

Mol	Type	Chain	Res	Link	Bond lengths			Bond angles		
					Counts	RMSZ	# Z > 2	Counts	RMSZ	# Z > 2
2	HEM	B	901	1	27,50,50	1.62	4 (14%)	17,82,82	1.69	5 (29%)
2	HEM	A	901	1	27,50,50	1.81	4 (14%)	17,82,82	1.60	3 (17%)
3	H4B	B	903	-	16,18,18	3.47	4 (25%)	11,26,26	2.22	6 (54%)
3	H4B	A	902	-	16,18,18	3.51	4 (25%)	11,26,26	2.07	5 (45%)
4	7NI	B	907[A]	-	12,13,13	2.46	3 (25%)	7,18,18	1.27	1 (14%)
4	7NI	A	906[B]	-	12,13,13	1.42	1 (8%)	7,18,18	1.14	1 (14%)
4	7NI	B	907[B]	-	12,13,13	1.54	3 (25%)	7,18,18	1.21	1 (14%)
4	7NI	A	906[A]	-	12,13,13	2.53	3 (25%)	7,18,18	1.24	1 (14%)

In the following table, the Chirals column lists the number of chiral outliers, the number of chiral centers analysed, the number of these observed in the model and the number defined in the Chemical Component Dictionary. Similar counts are reported in the Torsion and Rings columns. '-' means no outliers of that kind were identified.

Mol	Type	Chain	Res	Link	Chirals	Torsions	Rings
2	HEM	B	901	1	-	1/6/54/54	-
2	HEM	A	901	1	-	0/6/54/54	-
3	H4B	B	903	-	1/1/3/5	2/8/17/17	0/2/2/2
3	H4B	A	902	-	1/1/3/5	2/8/17/17	0/2/2/2
4	7NI	B	907[A]	-	-	0/2/4/4	0/2/2/2
4	7NI	A	906[B]	-	-	0/2/4/4	0/2/2/2
4	7NI	B	907[B]	-	-	0/2/4/4	0/2/2/2
4	7NI	A	906[A]	-	-	0/2/4/4	0/2/2/2

All (26) bond length outliers are listed below:

Mol	Chain	Res	Type	Atoms	Z	Observed(Å)	Ideal(Å)
3	A	902	H4B	C7-C6	-11.77	1.40	1.52
3	B	903	H4B	C7-C6	-11.55	1.41	1.52

Continued on next page...

Continued from previous page...

Mol	Chain	Res	Type	Atoms	Z	Observed(Å)	Ideal(Å)
4	A	906[A]	7NI	C5-C4	6.46	1.51	1.36
4	B	907[A]	7NI	C5-C4	6.44	1.51	1.36
3	A	902	H4B	C6-N5	-6.25	1.33	1.45
3	B	903	H4B	C6-N5	-6.22	1.33	1.45
2	A	901	HEM	C3B-C2B	-4.90	1.33	1.40
2	A	901	HEM	C3B-CAB	-4.84	1.38	1.47
4	B	907[A]	7NI	C4-C9	4.11	1.51	1.41
2	B	901	HEM	C3B-CAB	-3.97	1.39	1.47
4	A	906[A]	7NI	C4-C9	3.81	1.51	1.41
3	B	903	H4B	C7-N8	-3.72	1.38	1.44
2	B	901	HEM	C3C-CAC	-3.61	1.40	1.47
2	A	901	HEM	C3C-CAC	-3.54	1.40	1.47
3	A	902	H4B	C7-N8	-3.52	1.38	1.44
2	B	901	HEM	C3B-C2B	-3.39	1.35	1.40
4	A	906[B]	7NI	C3-C9	3.15	1.47	1.40
4	B	907[B]	7NI	C3-C9	3.08	1.47	1.40
2	A	901	HEM	C1C-C2C	2.75	1.48	1.42
4	B	907[A]	7NI	C3-C9	2.58	1.46	1.40
2	B	901	HEM	C1C-C2C	2.50	1.48	1.42
4	A	906[A]	7NI	C3-C9	2.40	1.46	1.40
4	B	907[B]	7NI	C5-C4	2.28	1.41	1.36
3	B	903	H4B	C4A-N5	-2.17	1.33	1.38
3	A	902	H4B	C4A-N5	-2.10	1.33	1.38
4	B	907[B]	7NI	C9-C8	2.06	1.45	1.43

All (23) bond angle outliers are listed below:

Mol	Chain	Res	Type	Atoms	Z	Observed(°)	Ideal(°)
2	A	901	HEM	C4C-C3C-C2C	-3.88	104.19	106.90
2	B	901	HEM	C4C-C3C-C2C	-3.55	104.42	106.90
2	A	901	HEM	CBA-CAA-C2A	-3.41	106.20	112.49
3	B	903	H4B	C4-C4A-N5	3.24	121.84	119.12
3	A	902	H4B	C4-C4A-C8A	3.14	117.36	114.57
3	B	903	H4B	C4-N3-C2	3.02	120.72	115.93
3	A	902	H4B	C4-N3-C2	2.98	120.66	115.93
4	B	907[B]	7NI	C9-C3-N2	-2.76	104.23	111.30
3	B	903	H4B	C4-C4A-C8A	2.76	117.02	114.57
3	B	903	H4B	O9-C9-C6	2.75	115.55	108.98
3	A	902	H4B	C4-C4A-N5	2.62	121.32	119.12
3	B	903	H4B	N3-C2-N1	-2.51	121.49	125.42
4	A	906[B]	7NI	C9-C3-N2	-2.49	104.93	111.30
3	B	903	H4B	C2-N1-C8A	2.47	120.08	114.54

Continued on next page...

Continued from previous page...

Mol	Chain	Res	Type	Atoms	Z	Observed(°)	Ideal(°)
4	B	907[A]	7NI	C9-C3-N2	-2.47	104.98	111.30
3	A	902	H4B	N3-C2-N1	-2.36	121.72	125.42
3	A	902	H4B	C2-N1-C8A	2.31	119.73	114.54
4	A	906[A]	7NI	C9-C3-N2	-2.29	105.44	111.30
2	B	901	HEM	CBA-CAA-C2A	-2.28	108.29	112.49
2	A	901	HEM	C1D-C2D-C3D	-2.20	105.47	107.00
2	B	901	HEM	C3B-C4B-NB	2.16	112.00	109.21
2	B	901	HEM	CMC-C2C-C3C	2.14	128.68	124.68
2	B	901	HEM	C1D-C2D-C3D	2.06	108.43	107.00

All (2) chirality outliers are listed below:

Mol	Chain	Res	Type	Atom
3	B	903	H4B	C6
3	A	902	H4B	C6

All (5) torsion outliers are listed below:

Mol	Chain	Res	Type	Atoms
2	B	901	HEM	C1A-C2A-CAA-CBA
3	B	903	H4B	C7-C6-C9-O9
3	B	903	H4B	C7-C6-C9-C10
3	A	902	H4B	C7-C6-C9-O9
3	A	902	H4B	C7-C6-C9-C10

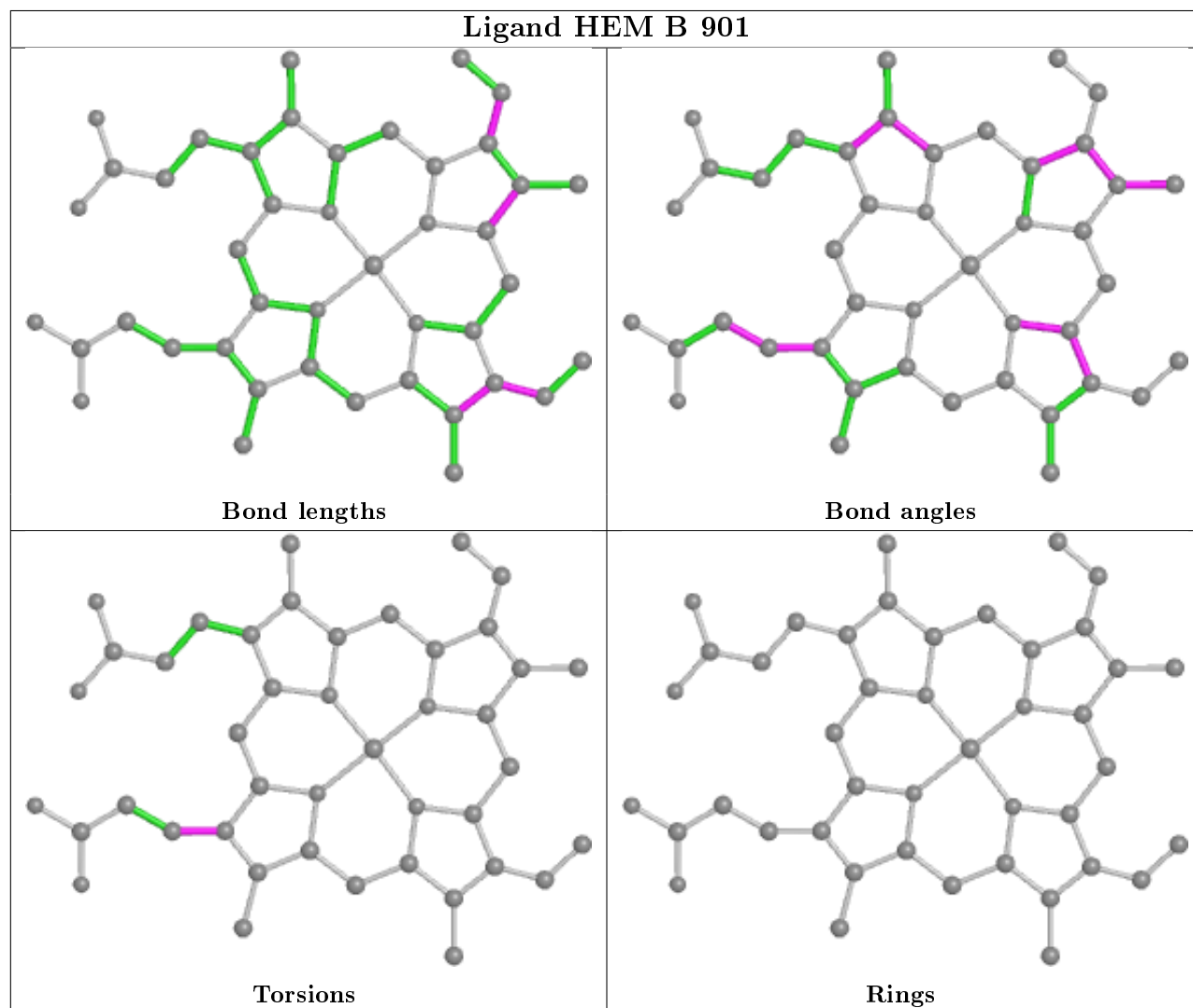
There are no ring outliers.

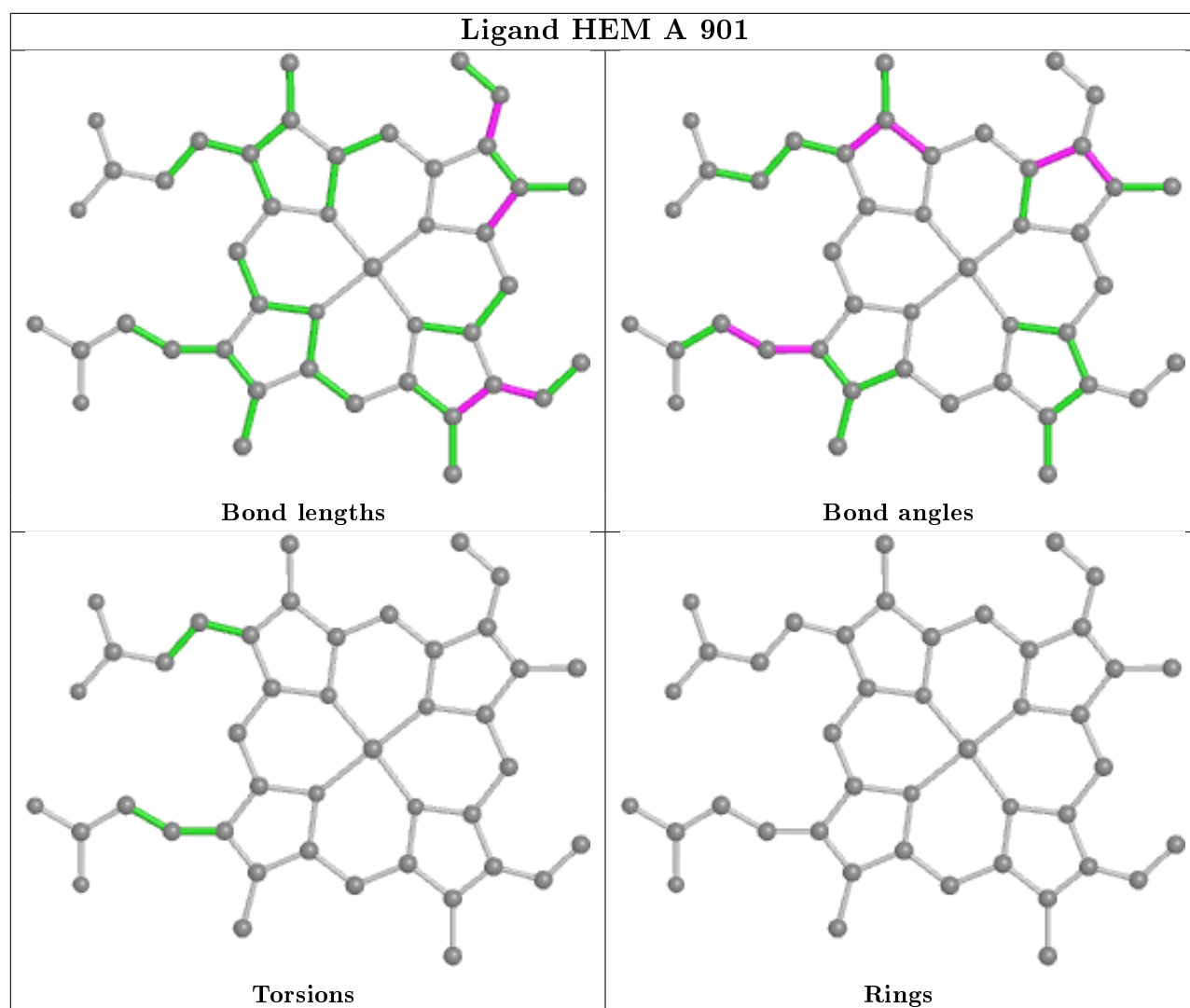
7 monomers are involved in 16 short contacts:

Mol	Chain	Res	Type	Clashes	Symm-Clashes
2	B	901	HEM	6	0
2	A	901	HEM	3	0
3	A	902	H4B	1	0
4	B	907[A]	7NI	2	0
4	A	906[B]	7NI	2	0
4	B	907[B]	7NI	6	0
4	A	906[A]	7NI	1	0

The following is a two-dimensional graphical depiction of Mogul quality analysis of bond lengths, bond angles, torsion angles, and ring geometry for all instances of the Ligand of Interest. In addition, ligands with molecular weight > 250 and outliers as shown on the validation Tables will also be included. For torsion angles, if less than 5% of the Mogul distribution of torsion angles is within 10 degrees of the torsion angle in question, then that torsion angle is considered an outlier.

Any bond that is central to one or more torsion angles identified as an outlier by Mogul will be highlighted in the graph. For rings, the root-mean-square deviation (RMSD) between the ring in question and similar rings identified by Mogul is calculated over all ring torsion angles. If the average RMSD is greater than 60 degrees and the minimal RMSD between the ring in question and any Mogul-identified rings is also greater than 60 degrees, then that ring is considered an outlier. The outliers are highlighted in purple. The color gray indicates Mogul did not find sufficient equivalents in the CSD to analyse the geometry.





5.7 Other polymers [i](#)

There are no such residues in this entry.

5.8 Polymer linkage issues [i](#)

There are no chain breaks in this entry.

6 Fit of model and data ⓘ

6.1 Protein, DNA and RNA chains ⓘ

EDS was not executed - this section is therefore empty.

6.2 Non-standard residues in protein, DNA, RNA chains ⓘ

EDS was not executed - this section is therefore empty.

6.3 Carbohydrates ⓘ

EDS was not executed - this section is therefore empty.

6.4 Ligands ⓘ

EDS was not executed - this section is therefore empty.

6.5 Other polymers ⓘ

EDS was not executed - this section is therefore empty.