



Full wwPDB X-ray Structure Validation Report ⓘ

May 18, 2020 – 10:04 pm BST

PDB ID : 5M8D
Title : Tubulin MTD265-R1 complex
Authors : Bohnacker, T.; Protá, A.E.; Steinmetz, M.O.; Wymann, M.P.
Deposited on : 2016-10-28
Resolution : 2.25 Å(reported)

This is a Full wwPDB X-ray Structure Validation Report for a publicly released PDB entry.

We welcome your comments at validation@mail.wwpdb.org

A user guide is available at

<https://www.wwpdb.org/validation/2017/XrayValidationReportHelp>

with specific help available everywhere you see the ⓘ symbol.

The following versions of software and data (see [references ⓘ](#)) were used in the production of this report:

MolProbity : 4.02b-467
Mogul : 1.8.5 (274361), CSD as541be (2020)
Xtriage (Phenix) : 1.13
EDS : 2.11
buster-report : 1.1.7 (2018)
Percentile statistics : 20191225.v01 (using entries in the PDB archive December 25th 2019)
Refmac : 5.8.0158
CCP4 : 7.0.044 (Gargrove)
Ideal geometry (proteins) : Engh & Huber (2001)
Ideal geometry (DNA, RNA) : Parkinson et al. (1996)
Validation Pipeline (wwPDB-VP) : 2.11

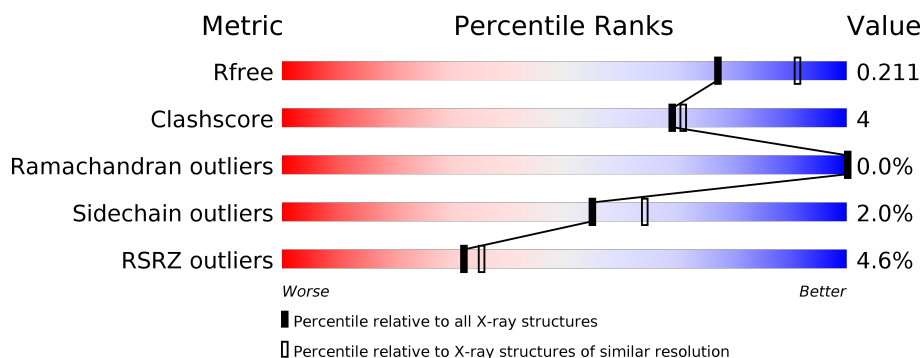
1 Overall quality at a glance

The following experimental techniques were used to determine the structure:

X-RAY DIFFRACTION

The reported resolution of this entry is 2.25 Å.

Percentile scores (ranging between 0-100) for global validation metrics of the entry are shown in the following graphic. The table shows the number of entries on which the scores are based.



Metric	Whole archive (#Entries)	Similar resolution (#Entries, resolution range(Å))
R_{free}	130704	1377 (2.26-2.26)
Clashscore	141614	1487 (2.26-2.26)
Ramachandran outliers	138981	1449 (2.26-2.26)
Sidechain outliers	138945	1450 (2.26-2.26)
RSRZ outliers	127900	1356 (2.26-2.26)

The table below summarises the geometric issues observed across the polymeric chains and their fit to the electron density. The red, orange, yellow and green segments on the lower bar indicate the fraction of residues that contain outliers for ≥ 3 , 2, 1 and 0 types of geometric quality criteria respectively. A grey segment represents the fraction of residues that are not modelled. The numeric value for each fraction is indicated below the corresponding segment, with a dot representing fractions $\leq 5\%$. The upper red bar (where present) indicates the fraction of residues that have poor fit to the electron density. The numeric value is given above the bar.

Mol	Chain	Length	Quality of chain
1	A	451	
1	C	451	
2	B	445	
2	D	445	
3	E	143	
4	F	384	

2 Entry composition

There are 13 unique types of molecules in this entry. The entry contains 18103 atoms, of which 0 are hydrogens and 0 are deuteriums.

In the tables below, the ZeroOcc column contains the number of atoms modelled with zero occupancy, the AltConf column contains the number of residues with at least one atom in alternate conformation and the Trace column contains the number of residues modelled with at most 2 atoms.

- Molecule 1 is a protein called Tubulin alpha-1B chain.

Mol	Chain	Residues	Atoms					ZeroOcc	AltConf	Trace
1	A	438	Total	C	N	O	S	0	0	0
			3424	2167	582	653	22			
1	C	440	Total	C	N	O	S	0	0	0
			3437	2175	584	656	22			

- Molecule 2 is a protein called Tubulin beta-2B chain.

Mol	Chain	Residues	Atoms					ZeroOcc	AltConf	Trace
2	B	423	Total	C	N	O	S	0	0	0
			3331	2094	568	643	26			
2	D	427	Total	C	N	O	S	0	0	0
			3349	2101	572	650	26			

- Molecule 3 is a protein called Stathmin-4.

Mol	Chain	Residues	Atoms					ZeroOcc	AltConf	Trace
3	E	123	Total	C	N	O	S	0	0	0
			1014	625	183	201	5			

There are 2 discrepancies between the modelled and reference sequences:

Chain	Residue	Modelled	Actual	Comment	Reference
E	3	MET	-	initiating methionine	UNP P63043
E	4	ALA	-	expression tag	UNP P63043

- Molecule 4 is a protein called Tubulin-Tyrosine Ligase.

Mol	Chain	Residues	Atoms					ZeroOcc	AltConf	Trace
4	F	344	Total	C	N	O	S	0	0	0
			2808	1800	483	511	14			

There are 6 discrepancies between the modelled and reference sequences:

Chain	Residue	Modelled	Actual	Comment	Reference
F	379	HIS	-	expression tag	UNP E1BQ43
F	380	HIS	-	expression tag	UNP E1BQ43
F	381	HIS	-	expression tag	UNP E1BQ43
F	382	HIS	-	expression tag	UNP E1BQ43
F	383	HIS	-	expression tag	UNP E1BQ43
F	384	HIS	-	expression tag	UNP E1BQ43

- Molecule 5 is GUANOSINE-5'-TRIPHOSPHATE (three-letter code: GTP) (formula: $C_{10}H_{16}N_5O_{14}P_3$).



Mol	Chain	Residues	Atoms					ZeroOcc	AltConf
5	A	1	Total	C	N	O	P	0	0
			32	10	5	14	3		
5	C	1	Total	C	N	O	P	0	0
			32	10	5	14	3		

- Molecule 6 is MAGNESIUM ION (three-letter code: MG) (formula: Mg).

Mol	Chain	Residues	Atoms		ZeroOcc	AltConf
6	B	1	Total	Mg	0	0
			1	1		
6	A	1	Total	Mg	0	0
			1	1		
6	D	1	Total	Mg	0	0
			1	1		
6	C	1	Total	Mg	0	0
			1	1		

Continued on next page...

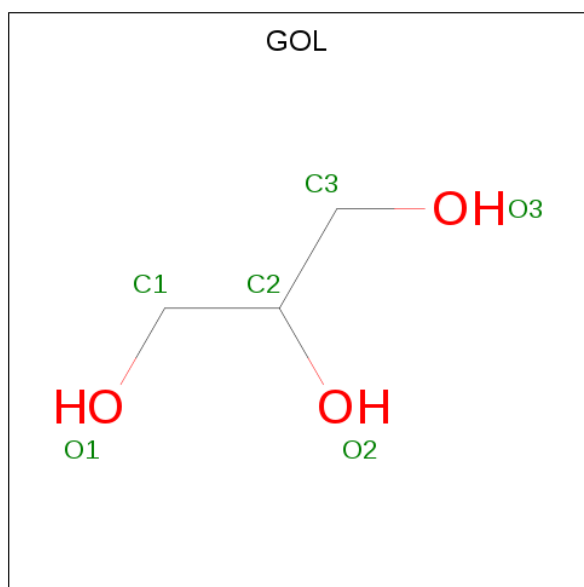
Continued from previous page...

Mol	Chain	Residues	Atoms		ZeroOcc	AltConf
6	F	1	Total	Mg	0	0
			1	1		

- Molecule 7 is CALCIUM ION (three-letter code: CA) (formula: Ca).

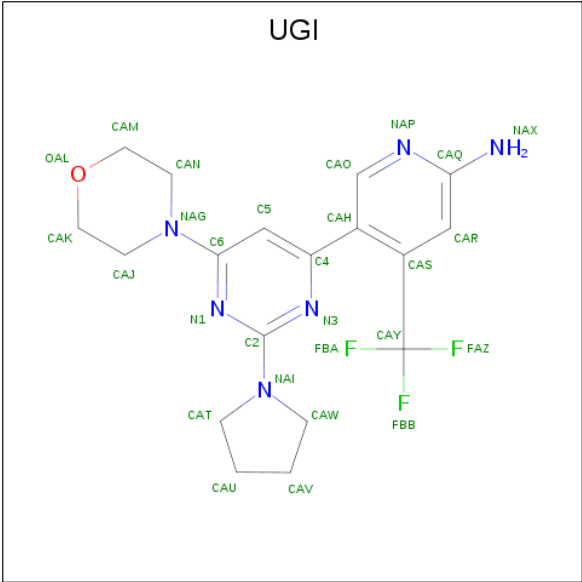
Mol	Chain	Residues	Atoms		ZeroOcc	AltConf
7	B	2	Total	Ca	0	0
			2	2		
7	A	2	Total	Ca	0	0
			2	2		
7	C	1	Total	Ca	0	0
			1	1		

- Molecule 8 is GLYCEROL (three-letter code: GOL) (formula: C₃H₈O₃).



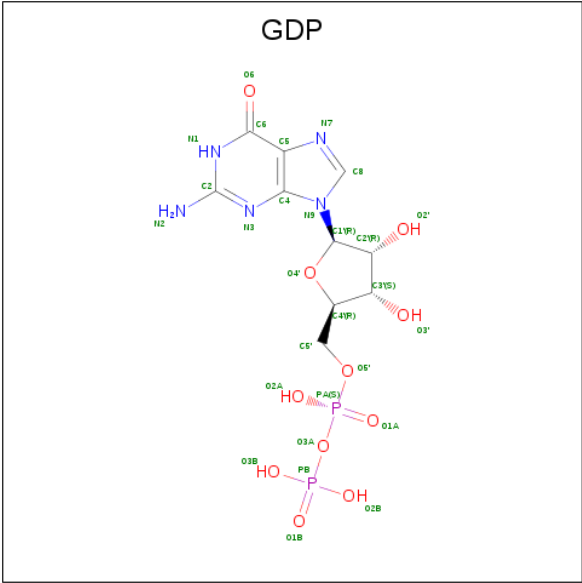
Mol	Chain	Residues	Atoms			ZeroOcc	AltConf
8	A	1	Total	C	O	0	0
			6	3	3		

- Molecule 9 is 5-(6-morpholin-4-yl-2-pyrrolidin-1-yl-pyrimidin-4-yl)-4-(trifluoromethyl)pyridine-2-amine (three-letter code: UGI) (formula: C₁₈H₂₁F₃N₆O).



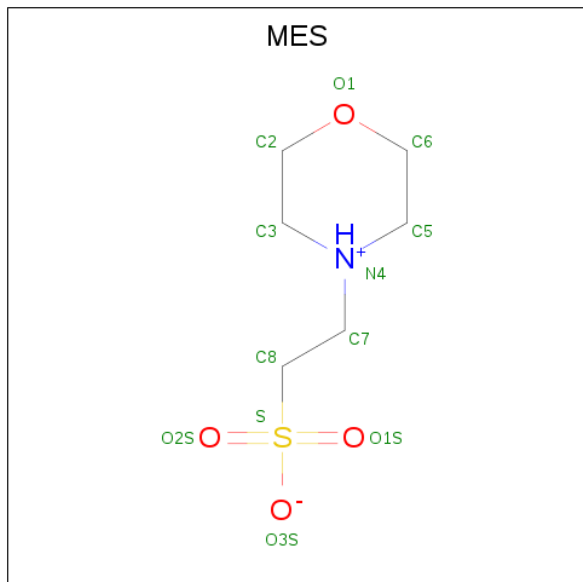
Mol	Chain	Residues	Atoms					ZeroOcc	AltConf
9	B	1	Total	C	F	N	O	0	0
			28	18	3	6	1		

- Molecule 10 is GUANOSINE-5'-DIPHOSPHATE (three-letter code: GDP) (formula: $C_{10}H_{15}N_5O_{11}P_2$).



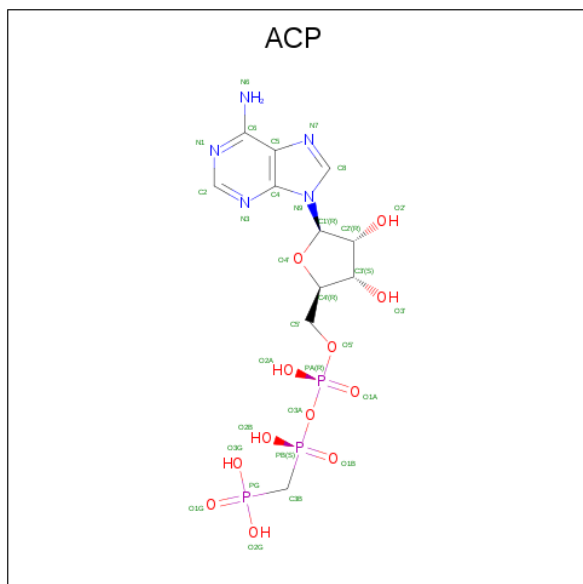
Mol	Chain	Residues	Atoms					ZeroOcc	AltConf
10	B	1	Total	C	N	O	P	0	0
			28	10	5	11	2		
10	D	1	Total	C	N	O	P	0	0
			28	10	5	11	2		

- Molecule 11 is 2-(N-MORPHOLINO)-ETHANESULFONIC ACID (three-letter code: MES) (formula: C₆H₁₃NO₄S).



Mol	Chain	Residues	Atoms					ZeroOcc	AltConf
11	B	1	Total	C	N	O	S	0	0
			12	6	1	4	1		

- Molecule 12 is PHOSPHOMETHYLPHOSPHONIC ACID ADENYLATE ESTER (three-letter code: ACP) (formula: C₁₁H₁₈N₅O₁₂P₃).



Mol	Chain	Residues	Atoms					ZeroOcc	AltConf
12	F	1	Total	C	N	O	P	0	0
			31	11	5	12	3		

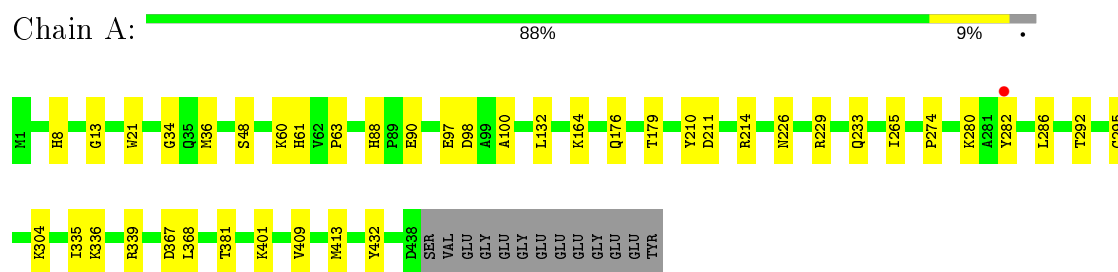
- Molecule 13 is water.

Mol	Chain	Residues	Atoms		ZeroOcc	AltConf
13	A	113	Total 113	O 113	0	0
13	B	95	Total 95	O 95	0	0
13	C	199	Total 199	O 199	0	0
13	D	69	Total 69	O 69	0	0
13	E	18	Total 18	O 18	0	0
13	F	39	Total 39	O 39	0	0

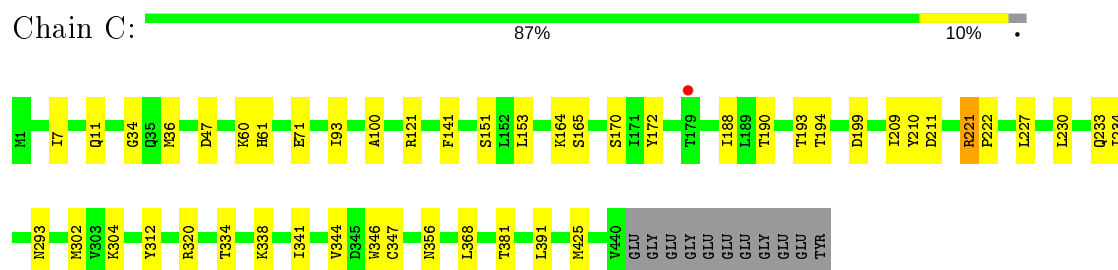
3 Residue-property plots [i](#)

These plots are drawn for all protein, RNA and DNA chains in the entry. The first graphic for a chain summarises the proportions of the various outlier classes displayed in the second graphic. The second graphic shows the sequence view annotated by issues in geometry and electron density. Residues are color-coded according to the number of geometric quality criteria for which they contain at least one outlier: green = 0, yellow = 1, orange = 2 and red = 3 or more. A red dot above a residue indicates a poor fit to the electron density ($RSRZ > 2$). Stretches of 2 or more consecutive residues without any outlier are shown as a green connector. Residues present in the sample, but not in the model, are shown in grey.

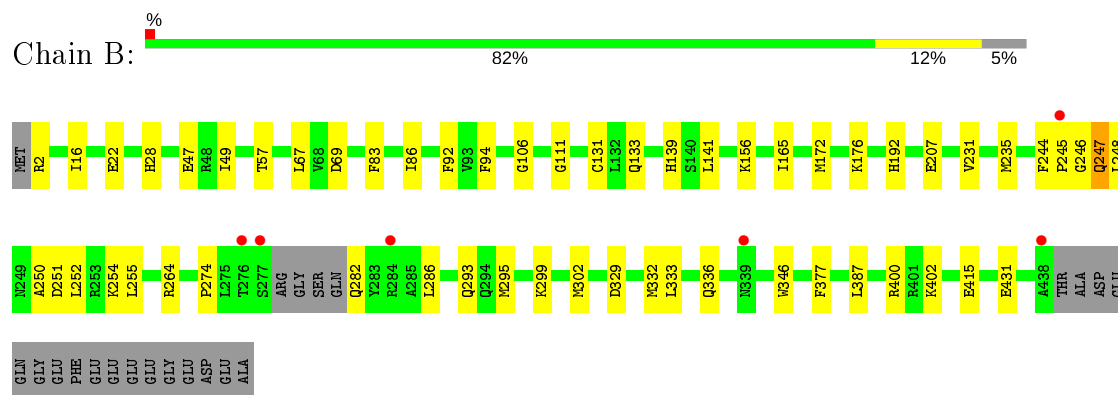
- Molecule 1: Tubulin alpha-1B chain



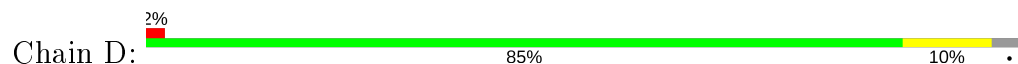
- Molecule 1: Tubulin alpha-1B chain



- Molecule 2: Tubulin beta-2B chain



- Molecule 2: Tubulin beta-2B chain



4 Data and refinement statistics

Property	Value	Source
Space group	P 21 21 21	Depositor
Cell constants a, b, c, α , β , γ	104.18Å 157.02Å 179.98Å 90.00° 90.00° 90.00°	Depositor
Resolution (Å)	68.10 – 2.25 78.19 – 2.25	Depositor EDS
% Data completeness (in resolution range)	99.5 (68.10-2.25) 99.5 (78.19-2.25)	Depositor EDS
R_{merge}	0.12	Depositor
R_{sym}	(Not available)	Depositor
$\langle I/\sigma(I) \rangle$ ¹	1.28 (at 2.25Å)	Xtriage
Refinement program	PHENIX (1.10.1 _2155: ???)	Depositor
R, R_{free}	0.170 , 0.210 0.171 , 0.211	Depositor DCC
R_{free} test set	6885 reflections (4.94%)	wwPDB-VP
Wilson B-factor (Å ²)	45.1	Xtriage
Anisotropy	0.092	Xtriage
Bulk solvent k_{sol} (e/Å ³), B_{sol} (Å ²)	0.33 , 48.7	EDS
L-test for twinning ²	$\langle L \rangle = 0.49$, $\langle L^2 \rangle = 0.32$	Xtriage
Estimated twinning fraction	No twinning to report.	Xtriage
F_o, F_c correlation	0.96	EDS
Total number of atoms	18103	wwPDB-VP
Average B, all atoms (Å ²)	63.0	wwPDB-VP

Xtriage's analysis on translational NCS is as follows: *The largest off-origin peak in the Patterson function is 2.33% of the height of the origin peak. No significant pseudotranslation is detected.*

¹Intensities estimated from amplitudes.

²Theoretical values of $\langle |L| \rangle$, $\langle L^2 \rangle$ for acentric reflections are 0.5, 0.333 respectively for untwinned datasets, and 0.375, 0.2 for perfectly twinned datasets.

5 Model quality

5.1 Standard geometry

Bond lengths and bond angles in the following residue types are not validated in this section: GDP, GOL, MG, CA, UGI, GTP, ACP, MES

The Z score for a bond length (or angle) is the number of standard deviations the observed value is removed from the expected value. A bond length (or angle) with $|Z| > 5$ is considered an outlier worth inspection. RMSZ is the root-mean-square of all Z scores of the bond lengths (or angles).

Mol	Chain	Bond lengths		Bond angles	
		RMSZ	# Z >5	RMSZ	# Z >5
1	A	0.38	0/3502	0.54	0/4754
1	C	0.48	1/3515 (0.0%)	0.58	0/4772
2	B	0.41	0/3405	0.56	0/4612
2	D	0.37	0/3422	0.53	0/4635
3	E	0.39	0/1022	0.48	0/1356
4	F	0.34	0/2872	0.50	0/3878
All	All	0.40	1/17738 (0.0%)	0.54	0/24007

All (1) bond length outliers are listed below:

Mol	Chain	Res	Type	Atoms	Z	Observed(Å)	Ideal(Å)
1	C	347	CYS	CB-SG	-5.17	1.73	1.81

There are no bond angle outliers.

There are no chirality outliers.

There are no planarity outliers.

5.2 Too-close contacts

In the following table, the Non-H and H(model) columns list the number of non-hydrogen atoms and hydrogen atoms in the chain respectively. The H(added) column lists the number of hydrogen atoms added and optimized by MolProbity. The Clashes column lists the number of clashes within the asymmetric unit, whereas Symm-Clashes lists symmetry related clashes.

Mol	Chain	Non-H	H(model)	H(added)	Clashes	Symm-Clashes
1	A	3424	0	3335	22	0
1	C	3437	0	3348	25	0
2	B	3331	0	3208	35	0
2	D	3349	0	3223	28	0

Continued on next page...

Continued from previous page...

Mol	Chain	Non-H	H(model)	H(added)	Clashes	Symm-Clashes
3	E	1014	0	1029	3	0
4	F	2808	0	2776	23	0
5	A	32	0	12	1	0
5	C	32	0	12	0	0
6	A	1	0	0	0	0
6	B	1	0	0	0	0
6	C	1	0	0	0	0
6	D	1	0	0	0	0
6	F	1	0	0	0	0
7	A	2	0	0	0	0
7	B	2	0	0	0	0
7	C	1	0	0	0	0
8	A	6	0	8	0	0
9	B	28	0	0	1	0
10	B	28	0	12	0	0
10	D	28	0	12	1	0
11	B	12	0	12	0	0
12	F	31	0	14	4	0
13	A	113	0	0	1	0
13	B	95	0	0	2	0
13	C	199	0	0	1	0
13	D	69	0	0	2	0
13	E	18	0	0	0	0
13	F	39	0	0	0	0
All	All	18103	0	17001	129	0

The all-atom clashscore is defined as the number of clashes found per 1000 atoms (including hydrogen atoms). The all-atom clashscore for this structure is 4.

All (129) close contacts within the same asymmetric unit are listed below, sorted by their clash magnitude.

Atom-1	Atom-2	Interatomic distance (Å)	Clash overlap (Å)
1:A:97:GLU:OE1	2:B:2:ARG:NH1	2.16	0.78
1:A:229:ARG:NH2	13:A:601:HOH:O	2.19	0.74
2:D:295:MET:HE2	2:D:377:PHE:HB2	1.69	0.73
1:C:211:ASP:OD2	1:C:304:LYS:NZ	2.27	0.67
2:B:299:LYS:NZ	13:B:602:HOH:O	2.30	0.65
4:F:195:GLY:HA3	4:F:197:ARG:HD3	1.80	0.64
2:B:295:MET:HE2	2:B:377:PHE:HB2	1.81	0.62
2:D:12:CYS:HB2	10:D:501:GDP:C8	2.34	0.62
2:D:281:GLN:NE2	13:D:602:HOH:O	2.30	0.62

Continued on next page...

Continued from previous page...

Atom-1	Atom-2	Interatomic distance (Å)	Clash overlap (Å)
1:A:210:TYR:CE2	1:A:214:ARG:HD2	2.35	0.61
2:D:311:ARG:NH2	2:D:345:GLU:OE1	2.33	0.61
2:B:274:PRO:HB3	2:B:286:LEU:HD22	1.82	0.60
2:B:2:ARG:HB3	2:B:133:GLN:HG3	1.82	0.60
4:F:241:THR:OG1	12:F:402:ACP:O2'	2.19	0.60
2:D:269:MET:HG3	2:D:303:ALA:HB3	1.83	0.60
4:F:162:ILE:H	4:F:236:LYS:NZ	2.00	0.59
2:D:167:ASN:ND2	13:D:604:HOH:O	2.36	0.58
2:B:250:ALA:HB1	2:B:255:LEU:HD21	1.86	0.58
12:F:402:ACP:O1A	12:F:402:ACP:O3G	2.22	0.56
2:B:83:PHE:O	2:B:86:ILE:HG12	2.06	0.56
4:F:225:SER:OG	4:F:260:ASN:ND2	2.35	0.56
1:A:132:LEU:O	1:A:164:LYS:NZ	2.34	0.55
2:B:172:MET:HG3	2:B:387:LEU:HD11	1.89	0.55
4:F:161:LEU:HD23	4:F:169:LEU:HD23	1.89	0.55
2:B:329:ASP:O	2:B:333:LEU:HG	2.07	0.55
1:C:312:TYR:CD1	1:C:341:ILE:HG23	2.43	0.54
2:B:16:ILE:HD13	2:B:231:VAL:HG11	1.89	0.53
2:B:69:ASP:O	2:B:94:PHE:HA	2.09	0.53
2:D:347:ILE:HG22	2:D:350:ASN:HB3	1.91	0.53
1:C:7:ILE:HG21	1:C:153:LEU:HD21	1.89	0.53
2:B:47:GLU:HB3	2:B:245:PRO:HG3	1.90	0.53
1:A:226:ASN:ND2	1:A:367:ASP:OD2	2.43	0.53
4:F:101:TYR:HD1	4:F:126:ASP:HB2	1.74	0.52
2:B:251:ASP:O	2:B:255:LEU:HG	2.10	0.52
2:B:2:ARG:HB3	2:B:133:GLN:CG	2.40	0.51
4:F:241:THR:HG1	12:F:402:ACP:HO2'	1.58	0.51
1:C:93:ILE:HD11	1:C:121:ARG:HG3	1.92	0.51
1:C:47:ASP:OD2	13:C:601:HOH:O	2.19	0.51
1:A:100:ALA:HA	2:B:254:LYS:HG3	1.93	0.51
4:F:191:LEU:HD12	4:F:196:HIS:CE1	2.46	0.51
1:C:320:ARG:HA	1:C:356:ASN:O	2.11	0.50
2:B:156:LYS:HD3	3:E:76:ARG:CZ	2.41	0.50
2:B:244:PHE:O	2:B:246:GLY:N	2.44	0.50
2:D:334:ASN:HD21	2:D:338:LYS:NZ	2.09	0.49
1:A:336:LYS:HG2	3:E:24:LEU:HD23	1.93	0.49
1:A:36:MET:HB3	1:A:61:HIS:CE1	2.47	0.49
2:B:165:ILE:HG21	2:B:252:LEU:HB3	1.94	0.49
1:C:334:THR:HG23	1:C:338:LYS:HE2	1.94	0.49
4:F:189:PRO:HG2	4:F:191:LEU:HD21	1.95	0.49
2:B:106:GLY:O	2:B:111:GLY:HA3	2.12	0.49

Continued on next page...

Continued from previous page...

Atom-1	Atom-2	Interatomic distance (Å)	Clash overlap (Å)
1:A:401:LYS:HG3	2:B:346:TRP:CE3	2.48	0.49
2:D:178:SER:CB	2:D:179:ASP:HA	2.43	0.49
1:A:88:HIS:CE1	1:A:90:GLU:HG3	2.48	0.48
1:C:151:SER:HB3	1:C:193:THR:HG21	1.93	0.48
1:C:188:ILE:HG13	1:C:425:MET:HG3	1.94	0.48
2:B:176:LYS:HD3	2:B:207:GLU:HG3	1.97	0.47
1:C:230:LEU:O	1:C:234:ILE:HD12	2.15	0.47
2:B:332:MET:O	2:B:336:GLN:HG3	2.15	0.47
4:F:162:ILE:H	4:F:236:LYS:HZ2	1.61	0.47
1:C:11:GLN:HE22	2:D:247:GLN:HE22	1.63	0.47
4:F:318:ASP:OD2	12:F:402:ACP:O3G	2.32	0.47
2:B:264:ARG:NE	2:B:431:GLU:OE2	2.39	0.47
4:F:101:TYR:CD1	4:F:126:ASP:HB2	2.50	0.46
2:D:136:GLN:HA	2:D:167:ASN:O	2.16	0.46
1:A:274:PRO:HB3	1:A:286:LEU:HD12	1.96	0.46
1:C:190:THR:O	1:C:194:THR:HG23	2.15	0.46
2:D:6:HIS:CD2	2:D:21:TRP:HE1	2.34	0.46
2:D:248:LEU:HD11	2:D:352:LYS:HB3	1.97	0.46
2:D:163:ASP:O	2:D:253:ARG:NH2	2.49	0.46
2:B:67:LEU:HD22	2:B:92:PHE:CE2	2.51	0.46
1:C:221:ARG:HG3	2:D:325:MET:HB3	1.97	0.45
1:A:21:TRP:CZ3	1:A:63:PRO:HB3	2.52	0.45
2:B:402:LYS:HD3	2:B:415:GLU:OE2	2.17	0.45
4:F:184:LYS:NZ	4:F:185:TYR:O	2.47	0.45
1:A:265:ILE:HG23	1:A:432:TYR:CE1	2.52	0.45
2:D:172:MET:HG3	2:D:387:LEU:HD11	1.98	0.44
1:C:209:ILE:HG22	1:C:227:LEU:HD22	1.98	0.44
1:A:34:GLY:HA3	1:A:60:LYS:HG3	2.00	0.44
2:D:156:LYS:HA	2:D:156:LYS:HD2	1.85	0.44
2:B:286:LEU:HD12	2:B:286:LEU:HA	1.85	0.44
1:A:211:ASP:OD2	1:A:304:LYS:NZ	2.31	0.44
1:C:341:ILE:HD12	1:C:341:ILE:H	1.82	0.44
1:A:335:ILE:HG23	1:A:339:ARG:HG3	1.99	0.43
2:B:2:ARG:HA	2:B:131:CYS:O	2.18	0.43
2:B:141:LEU:HD12	2:B:172:MET:SD	2.57	0.43
2:B:293:GLN:NE2	13:B:601:HOH:O	2.28	0.43
3:E:92:ASN:O	3:E:96:MET:HG2	2.18	0.43
4:F:242:ASN:HD22	4:F:245:ILE:HD12	1.83	0.43
4:F:73:ARG:HB2	4:F:76:SER:OG	2.18	0.43
2:B:255:LEU:HD22	9:B:501:UGI:CAO	2.48	0.43
2:D:171:VAL:HA	2:D:204:ILE:O	2.19	0.43

Continued on next page...

Continued from previous page...

Atom-1	Atom-2	Interatomic distance (Å)	Clash overlap (Å)
4:F:101:TYR:N	4:F:126:ASP:OD2	2.31	0.43
2:D:187:ALA:O	2:D:191:VAL:HG23	2.18	0.43
2:D:21:TRP:CZ3	2:D:63:PRO:HB3	2.54	0.43
1:A:280:LYS:HE2	1:A:282:TYR:O	2.18	0.42
2:D:165:ILE:HG21	2:D:252:LEU:HB3	2.01	0.42
4:F:307:LEU:HD22	4:F:308:HIS:CE1	2.53	0.42
2:B:22:GLU:HG2	2:B:83:PHE:CD1	2.54	0.42
1:C:36:MET:HB3	1:C:61:HIS:CE1	2.54	0.42
1:A:292:THR:O	1:A:295:CYS:HB2	2.18	0.42
2:D:106:GLY:O	2:D:111:GLY:HA3	2.19	0.42
4:F:55:GLU:HB3	4:F:58:LEU:HD12	2.00	0.42
2:B:28:HIS:HB3	2:B:49:ILE:HD12	2.02	0.42
1:C:100:ALA:HA	2:D:254:LYS:HG3	2.02	0.42
1:C:172:TYR:CE2	1:C:391:LEU:HD22	2.55	0.42
1:C:210:TYR:CZ	1:C:222:PRO:HD2	2.55	0.42
1:C:165:SER:HA	1:C:199:ASP:OD2	2.19	0.42
2:B:244:PHE:C	2:B:246:GLY:H	2.23	0.41
2:D:312:TYR:CE1	2:D:377:PHE:HZ	2.37	0.41
2:D:104:ALA:HB2	2:D:413:MET:SD	2.60	0.41
2:D:12:CYS:HB3	2:D:140:SER:HB3	2.02	0.41
1:C:344:VAL:HG21	1:C:346:TRP:CE2	2.56	0.41
4:F:197:ARG:NH1	4:F:257:GLU:OE2	2.49	0.41
2:B:235:MET:HE2	2:B:235:MET:HB3	1.88	0.41
2:D:191:VAL:O	2:D:195:VAL:HG23	2.20	0.41
4:F:4:PHE:CZ	4:F:29:ARG:HB2	2.56	0.41
1:A:8:HIS:HB3	1:A:13:GLY:O	2.20	0.41
1:C:233:GLN:HG3	1:C:368:LEU:CD1	2.51	0.41
1:A:233:GLN:HG3	1:A:368:LEU:HD12	2.04	0.40
2:B:402:LYS:NZ	2:B:415:GLU:OE1	2.54	0.40
4:F:284:LEU:HA	4:F:284:LEU:HD12	1.97	0.40
1:C:141:PHE:CE1	1:C:170:SER:HB3	2.56	0.40
2:D:323:MET:HB3	2:D:373:MET:HE2	2.03	0.40
1:A:409:VAL:HA	1:A:413:MET:O	2.21	0.40
1:C:34:GLY:HA3	1:C:60:LYS:HG3	2.02	0.40
4:F:87:LEU:O	4:F:91:CYS:HB2	2.21	0.40
1:C:164:LYS:HB2	1:C:164:LYS:HE2	1.83	0.40
1:A:98:ASP:HB2	5:A:501:GTP:O1G	2.22	0.40
4:F:157:GLY:HA2	4:F:245:ILE:HD11	2.03	0.40

There are no symmetry-related clashes.

5.3 Torsion angles

5.3.1 Protein backbone

In the following table, the Percentiles column shows the percent Ramachandran outliers of the chain as a percentile score with respect to all X-ray entries followed by that with respect to entries of similar resolution.

The Analysed column shows the number of residues for which the backbone conformation was analysed, and the total number of residues.

Mol	Chain	Analysed	Favoured	Allowed	Outliers	Percentiles	
1	A	436/451 (97%)	428 (98%)	8 (2%)	0	100	100
1	C	438/451 (97%)	427 (98%)	11 (2%)	0	100	100
2	B	419/445 (94%)	410 (98%)	8 (2%)	1 (0%)	47	55
2	D	423/445 (95%)	417 (99%)	6 (1%)	0	100	100
3	E	119/143 (83%)	119 (100%)	0	0	100	100
4	F	336/384 (88%)	325 (97%)	11 (3%)	0	100	100
All	All	2171/2319 (94%)	2126 (98%)	44 (2%)	1 (0%)	100	100

All (1) Ramachandran outliers are listed below:

Mol	Chain	Res	Type
2	B	247	GLN

5.3.2 Protein sidechains

In the following table, the Percentiles column shows the percent sidechain outliers of the chain as a percentile score with respect to all X-ray entries followed by that with respect to entries of similar resolution.

The Analysed column shows the number of residues for which the sidechain conformation was analysed, and the total number of residues.

Mol	Chain	Analysed	Rotameric	Outliers	Percentiles	
1	A	369/379 (97%)	365 (99%)	4 (1%)	73	82
1	C	371/379 (98%)	366 (99%)	5 (1%)	69	79
2	B	366/383 (96%)	358 (98%)	8 (2%)	52	61
2	D	368/383 (96%)	362 (98%)	6 (2%)	62	73
3	E	110/127 (87%)	109 (99%)	1 (1%)	78	86
4	F	306/342 (90%)	292 (95%)	14 (5%)	27	30

Continued on next page...

Continued from previous page...

Mol	Chain	Analysed	Rotameric	Outliers	Percentiles
All	All	1890/1993 (95%)	1852 (98%)	38 (2%)	55 64

All (38) residues with a non-rotameric sidechain are listed below:

Mol	Chain	Res	Type
1	A	48	SER
1	A	176	GLN
1	A	179	THR
1	A	381	THR
2	B	57	THR
2	B	139	HIS
2	B	192	HIS
2	B	247	GLN
2	B	248	LEU
2	B	282	GLN
2	B	302	MET
2	B	400	ARG
1	C	71	GLU
1	C	221	ARG
1	C	293	ASN
1	C	302	MET
1	C	381	THR
2	D	90	ASP
2	D	139	HIS
2	D	177	VAL
2	D	178	SER
2	D	200	GLU
2	D	248	LEU
3	E	128	LYS
4	F	12	SER
4	F	76	SER
4	F	125	THR
4	F	140	GLU
4	F	168	GLU
4	F	184	LYS
4	F	217	ARG
4	F	222	ARG
4	F	236	LYS
4	F	241	THR
4	F	257	GLU
4	F	307	LEU
4	F	320	MET

Continued on next page...

Continued from previous page...

Mol	Chain	Res	Type
4	F	381	HIS

Some sidechains can be flipped to improve hydrogen bonding and reduce clashes. All (7) such sidechains are listed below:

Mol	Chain	Res	Type
1	A	101	ASN
1	A	176	GLN
2	D	15	GLN
2	D	247	GLN
2	D	334	ASN
4	F	260	ASN
4	F	381	HIS

5.3.3 RNA [i](#)

There are no RNA molecules in this entry.

5.4 Non-standard residues in protein, DNA, RNA chains [i](#)

There are no non-standard protein/DNA/RNA residues in this entry.

5.5 Carbohydrates [i](#)

There are no carbohydrates in this entry.

5.6 Ligand geometry [i](#)

Of 18 ligands modelled in this entry, 10 are monoatomic - leaving 8 for Mogul analysis.

In the following table, the Counts columns list the number of bonds (or angles) for which Mogul statistics could be retrieved, the number of bonds (or angles) that are observed in the model and the number of bonds (or angles) that are defined in the Chemical Component Dictionary. The Link column lists molecule types, if any, to which the group is linked. The Z score for a bond length (or angle) is the number of standard deviations the observed value is removed from the expected value. A bond length (or angle) with $|Z| > 2$ is considered an outlier worth inspection. RMSZ is the root-mean-square of all Z scores of the bond lengths (or angles).

Mol	Type	Chain	Res	Link	Bond lengths			Bond angles		
					Counts	RMSZ	$\# Z > 2$	Counts	RMSZ	$\# Z > 2$
9	UGI	B	501	-	31,31,31	1.40	6 (19%)	41,45,45	1.76	11 (26%)

Mol	Type	Chain	Res	Link	Bond lengths			Bond angles		
					Counts	RMSZ	# Z > 2	Counts	RMSZ	# Z > 2
10	GDP	B	502	6	24,30,30	1.20	2 (8%)	31,47,47	1.89	9 (29%)
11	MES	B	506	-	12,12,12	1.93	1 (8%)	14,16,16	1.87	3 (21%)
10	GDP	D	501	6	24,30,30	1.12	2 (8%)	31,47,47	1.95	7 (22%)
5	GTP	A	501	6	26,34,34	0.90	1 (3%)	33,54,54	1.89	9 (27%)
5	GTP	C	501	6	26,34,34	1.04	1 (3%)	33,54,54	1.77	7 (21%)
8	GOL	A	505	-	5,5,5	0.35	0	5,5,5	0.44	0
12	ACP	F	402	6	27,33,33	1.71	6 (22%)	32,52,52	1.26	4 (12%)

In the following table, the Chirals column lists the number of chiral outliers, the number of chiral centers analysed, the number of these observed in the model and the number defined in the Chemical Component Dictionary. Similar counts are reported in the Torsion and Rings columns. '-' means no outliers of that kind were identified.

Mol	Type	Chain	Res	Link	Chirals	Torsions	Rings
9	UGI	B	501	-	-	3/18/33/33	0/4/4/4
10	GDP	B	502	6	-	5/12/32/32	0/3/3/3
11	MES	B	506	-	-	3/6/14/14	0/1/1/1
10	GDP	D	501	6	-	5/12/32/32	0/3/3/3
5	GTP	A	501	6	-	5/18/38/38	0/3/3/3
5	GTP	C	501	6	-	6/18/38/38	0/3/3/3
8	GOL	A	505	-	-	2/4/4/4	-
12	ACP	F	402	6	-	5/15/38/38	0/3/3/3

All (19) bond length outliers are listed below:

Mol	Chain	Res	Type	Atoms	Z	Observed(Å)	Ideal(Å)
11	B	506	MES	C8-S	-6.35	1.68	1.77
10	B	502	GDP	C6-C5	4.08	1.48	1.41
9	B	501	UGI	CAY-CAS	-4.07	1.41	1.50
12	F	402	ACP	PB-O1B	4.04	1.61	1.51
12	F	402	ACP	PB-O3A	3.93	1.62	1.58
10	D	501	GDP	C6-C5	3.69	1.47	1.41
9	B	501	UGI	CAH-C4	-3.62	1.39	1.48
5	C	501	GTP	C6-N1	3.35	1.38	1.33
12	F	402	ACP	PB-O2B	-3.03	1.49	1.56
12	F	402	ACP	PG-O2G	2.90	1.61	1.54
12	F	402	ACP	PG-O3G	2.82	1.61	1.54
12	F	402	ACP	C5-C4	2.43	1.47	1.40
5	A	501	GTP	C6-N1	2.35	1.37	1.33

Continued on next page...

Continued from previous page...

Mol	Chain	Res	Type	Atoms	Z	Observed(Å)	Ideal(Å)
9	B	501	UGI	CAO-NAP	2.30	1.39	1.34
9	B	501	UGI	C2-NAI	-2.24	1.31	1.35
10	B	502	GDP	O4'-C1'	2.20	1.44	1.41
9	B	501	UGI	FBB-CAY	-2.18	1.24	1.32
9	B	501	UGI	FBA-CAY	-2.15	1.25	1.32
10	D	501	GDP	C5-C4	2.15	1.46	1.40

All (50) bond angle outliers are listed below:

Mol	Chain	Res	Type	Atoms	Z	Observed(°)	Ideal(°)
5	A	501	GTP	N3-C2-N1	-5.52	119.86	127.22
5	C	501	GTP	N3-C2-N1	-5.33	120.11	127.22
11	B	506	MES	C5-N4-C3	5.16	120.44	108.83
10	D	501	GDP	C2-N3-C4	4.88	120.94	115.36
10	B	502	GDP	C6-C5-C4	-4.73	116.28	120.80
9	B	501	UGI	CAN-NAG-CAJ	4.67	121.83	111.52
10	B	502	GDP	C2-N3-C4	4.64	120.66	115.36
10	D	501	GDP	C6-C5-C4	-4.30	116.70	120.80
9	B	501	UGI	CAO-CAH-C4	-4.24	113.98	121.16
5	C	501	GTP	C2-N3-C4	3.96	119.88	115.36
10	D	501	GDP	C6-N1-C2	3.93	122.17	115.93
5	A	501	GTP	C5-C6-N1	-3.87	118.14	123.43
10	B	502	GDP	C6-N1-C2	3.82	122.00	115.93
5	A	501	GTP	C6-N1-C2	3.78	121.93	115.93
10	D	501	GDP	C5-C6-N1	-3.75	118.31	123.43
10	D	501	GDP	N3-C2-N1	-3.45	122.62	127.22
10	B	502	GDP	C5-C6-N1	-3.40	118.79	123.43
5	C	501	GTP	C5-C6-N1	-3.33	118.88	123.43
10	B	502	GDP	N3-C2-N1	-3.25	122.88	127.22
9	B	501	UGI	C4-C5-C6	3.23	119.15	117.03
12	F	402	ACP	N3-C2-N1	-3.20	123.67	128.68
12	F	402	ACP	C3'-C2'-C1'	3.16	105.73	100.98
5	A	501	GTP	C2-N3-C4	3.13	118.93	115.36
11	B	506	MES	O3S-S-C8	3.11	110.80	105.77
10	D	501	GDP	PA-O3A-PB	-3.04	122.39	132.83
9	B	501	UGI	C5-C4-N3	-2.90	118.91	122.35
5	C	501	GTP	C6-N1-C2	2.83	120.43	115.93
9	B	501	UGI	N3-C2-N1	-2.75	121.76	126.31
9	B	501	UGI	C2-N1-C6	2.67	119.91	115.03
9	B	501	UGI	N3-C2-NAI	2.61	120.34	117.11
9	B	501	UGI	FBA-CAY-CAS	-2.59	108.19	112.70
5	A	501	GTP	C1'-N9-C4	-2.59	122.09	126.64

Continued on next page...

Continued from previous page...

Mol	Chain	Res	Type	Atoms	Z	Observed(°)	Ideal(°)
10	D	501	GDP	C4-C5-N7	-2.53	106.76	109.40
10	B	502	GDP	C4-C5-N7	-2.51	106.78	109.40
5	A	501	GTP	PA-O3A-PB	-2.45	124.41	132.83
5	C	501	GTP	PA-O3A-PB	-2.44	124.45	132.83
11	B	506	MES	C7-N4-C3	2.42	117.42	111.23
12	F	402	ACP	C4-C5-N7	-2.39	106.91	109.40
10	B	502	GDP	C1'-N9-C4	-2.38	122.46	126.64
5	A	501	GTP	C6-C5-C4	-2.37	118.53	120.80
5	A	501	GTP	O2G-PG-O3B	2.34	112.49	104.64
9	B	501	UGI	CAR-CAS-CAH	-2.33	116.96	119.77
12	F	402	ACP	PA-O3A-PB	-2.31	125.24	132.56
5	C	501	GTP	PB-O3B-PG	-2.25	125.09	132.83
10	B	502	GDP	O3'-C3'-C4'	-2.24	104.58	111.05
5	C	501	GTP	N2-C2-N1	2.23	120.72	117.25
9	B	501	UGI	CAM-CAN-NAG	2.20	114.08	110.02
9	B	501	UGI	OAL-CAK-CAJ	-2.13	107.10	111.80
10	B	502	GDP	PA-O3A-PB	-2.08	125.70	132.83
5	A	501	GTP	PB-O3B-PG	-2.07	125.72	132.83

There are no chirality outliers.

All (34) torsion outliers are listed below:

Mol	Chain	Res	Type	Atoms
10	D	501	GDP	C5'-O5'-PA-O1A
10	D	501	GDP	C5'-O5'-PA-O2A
5	A	501	GTP	PB-O3B-PG-O2G
5	A	501	GTP	C5'-O5'-PA-O1A
5	A	501	GTP	C5'-O5'-PA-O2A
5	C	501	GTP	C5'-O5'-PA-O1A
5	C	501	GTP	C5'-O5'-PA-O2A
10	B	502	GDP	C5'-O5'-PA-O1A
10	B	502	GDP	C5'-O5'-PA-O2A
12	F	402	ACP	PG-C3B-PB-O1B
12	F	402	ACP	PG-C3B-PB-O2B
12	F	402	ACP	PG-C3B-PB-O3A
8	A	505	GOL	O1-C1-C2-O2
11	B	506	MES	C7-C8-S-O3S
8	A	505	GOL	O1-C1-C2-C3
11	B	506	MES	C7-C8-S-O1S
11	B	506	MES	C7-C8-S-O2S
9	B	501	UGI	N3-C4-CAH-CAO
5	C	501	GTP	PB-O3B-PG-O1G

Continued on next page...

Continued from previous page...

Mol	Chain	Res	Type	Atoms
9	B	501	UGI	C5-C4-CAH-CAS
10	D	501	GDP	PB-O3A-PA-O2A
9	B	501	UGI	C5-C4-CAH-CAO
5	A	501	GTP	PB-O3B-PG-O3G
5	C	501	GTP	PB-O3B-PG-O3G
12	F	402	ACP	PB-O3A-PA-O2A
10	D	501	GDP	C5'-O5'-PA-O3A
5	A	501	GTP	C5'-O5'-PA-O3A
5	C	501	GTP	C5'-O5'-PA-O3A
10	B	502	GDP	C5'-O5'-PA-O3A
10	D	501	GDP	PB-O3A-PA-O1A
5	C	501	GTP	PB-O3A-PA-O2A
10	B	502	GDP	PB-O3A-PA-O1A
10	B	502	GDP	PB-O3A-PA-O2A
12	F	402	ACP	C5'-O5'-PA-O1A

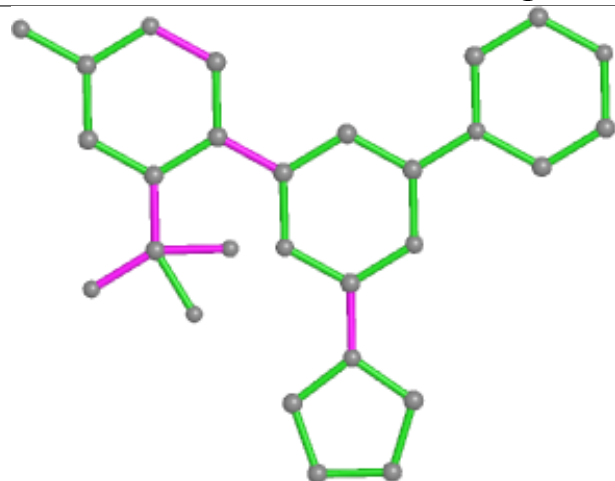
There are no ring outliers.

4 monomers are involved in 7 short contacts:

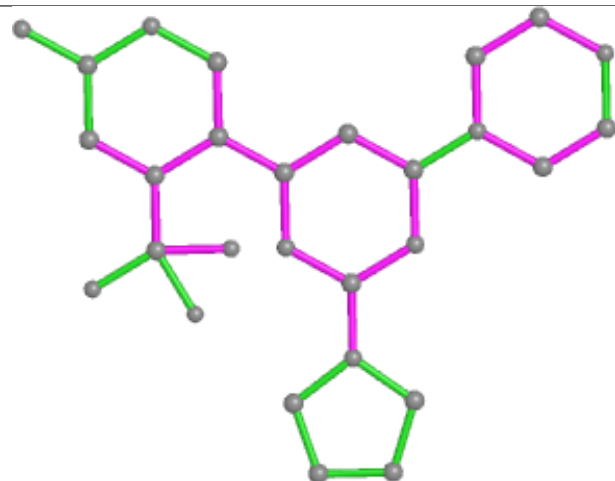
Mol	Chain	Res	Type	Clashes	Symm-Clashes
9	B	501	UGI	1	0
10	D	501	GDP	1	0
5	A	501	GTP	1	0
12	F	402	ACP	4	0

The following is a two-dimensional graphical depiction of Mogul quality analysis of bond lengths, bond angles, torsion angles, and ring geometry for all instances of the Ligand of Interest. In addition, ligands with molecular weight > 250 and outliers as shown on the validation Tables will also be included. For torsion angles, if less than 5% of the Mogul distribution of torsion angles is within 10 degrees of the torsion angle in question, then that torsion angle is considered an outlier. Any bond that is central to one or more torsion angles identified as an outlier by Mogul will be highlighted in the graph. For rings, the root-mean-square deviation (RMSD) between the ring in question and similar rings identified by Mogul is calculated over all ring torsion angles. If the average RMSD is greater than 60 degrees and the minimal RMSD between the ring in question and any Mogul-identified rings is also greater than 60 degrees, then that ring is considered an outlier. The outliers are highlighted in purple. The color gray indicates Mogul did not find sufficient equivalents in the CSD to analyse the geometry.

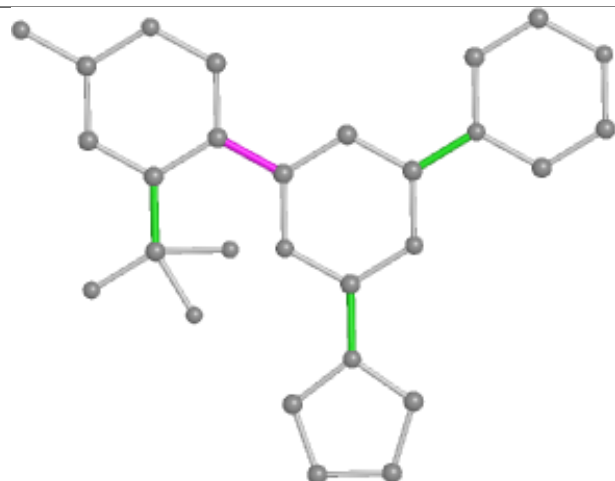
Ligand UGI B 501



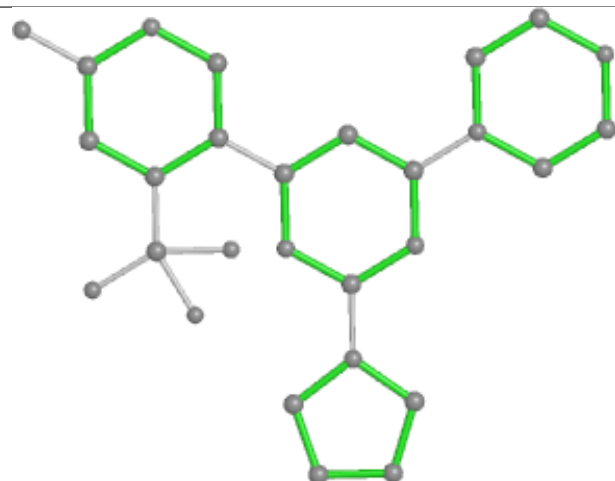
Bond lengths



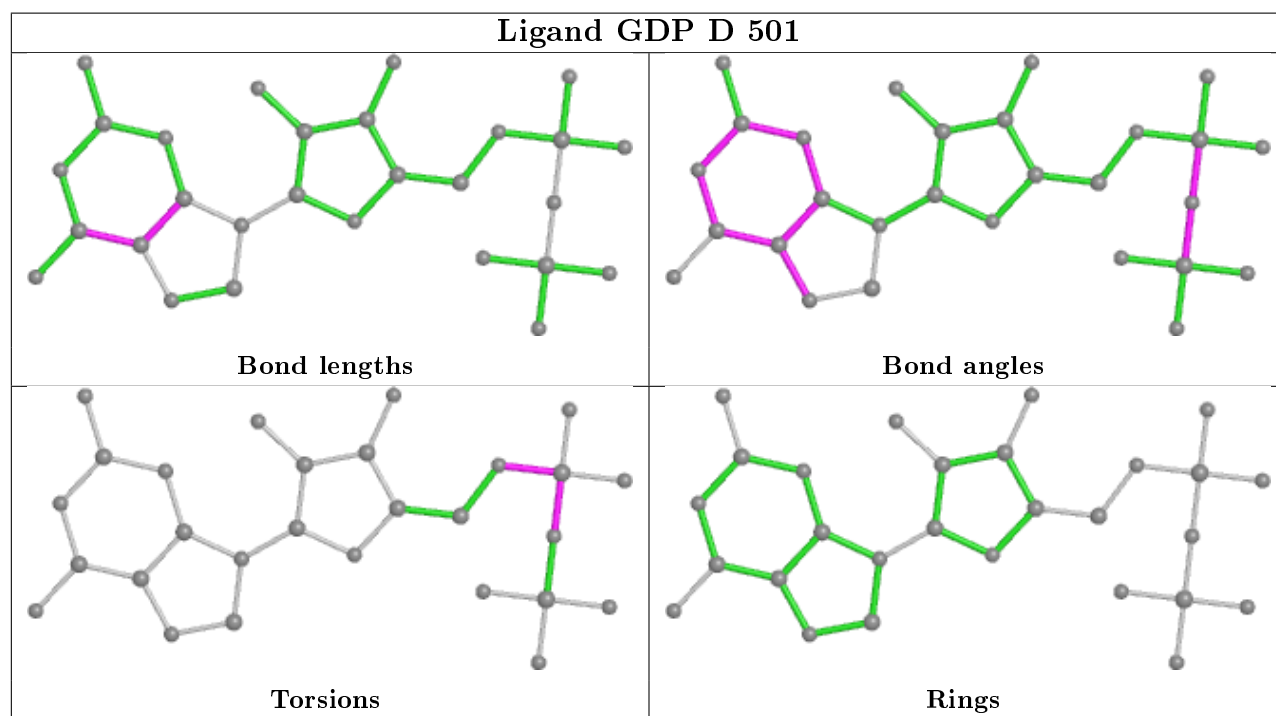
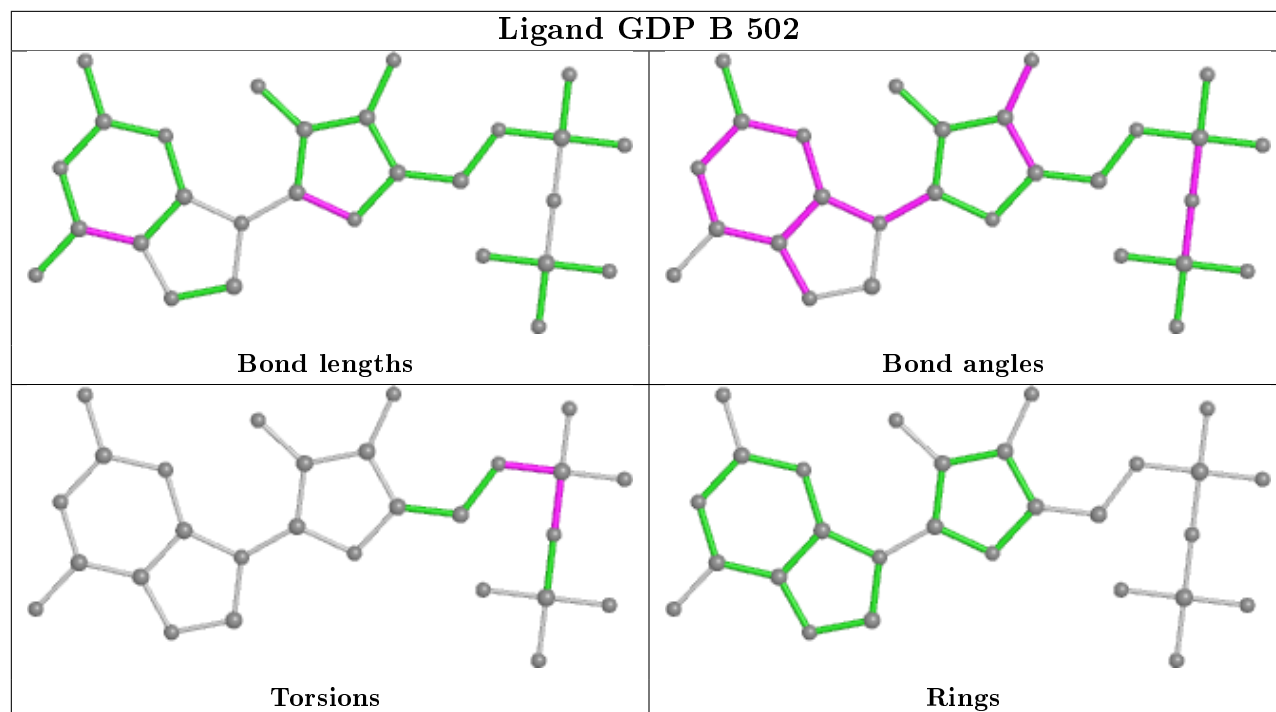
Bond angles

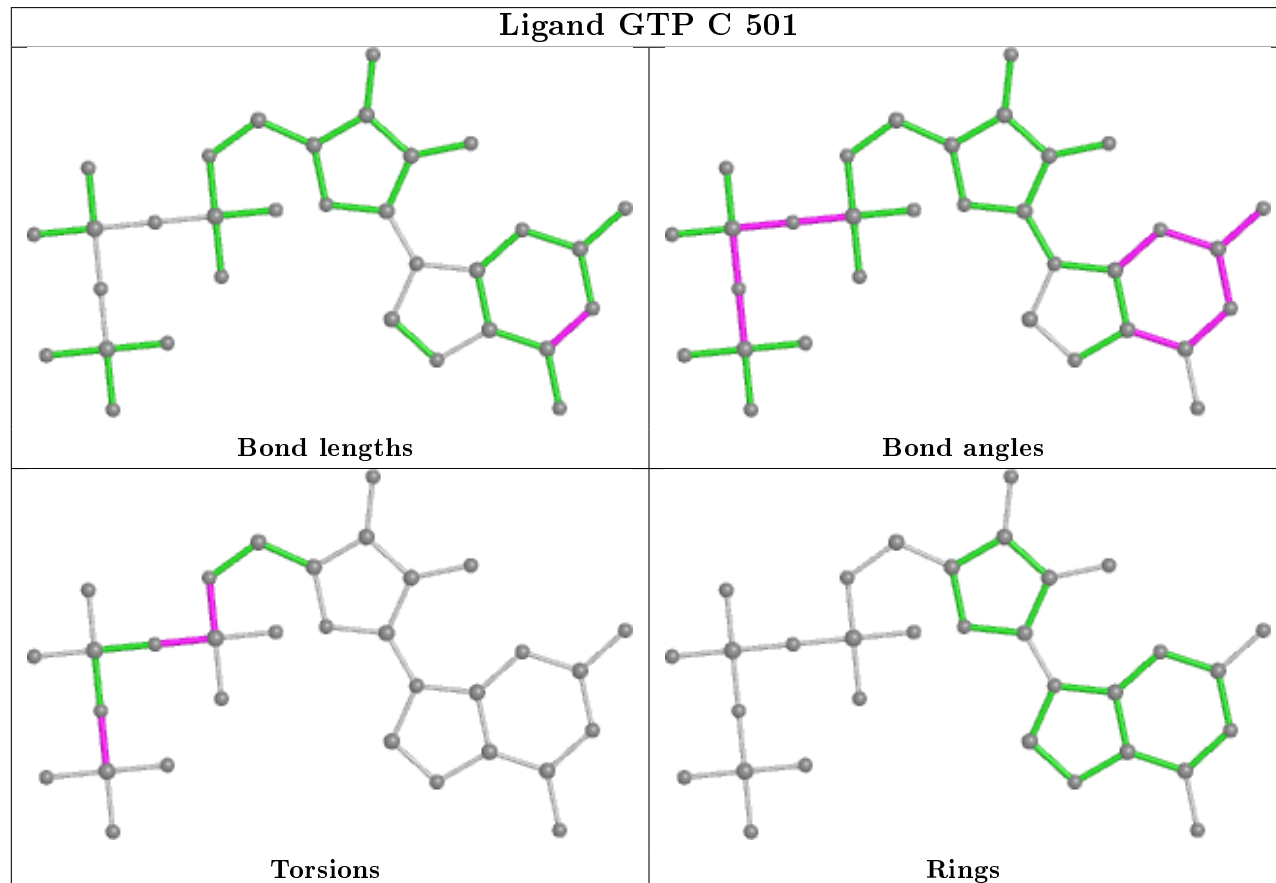
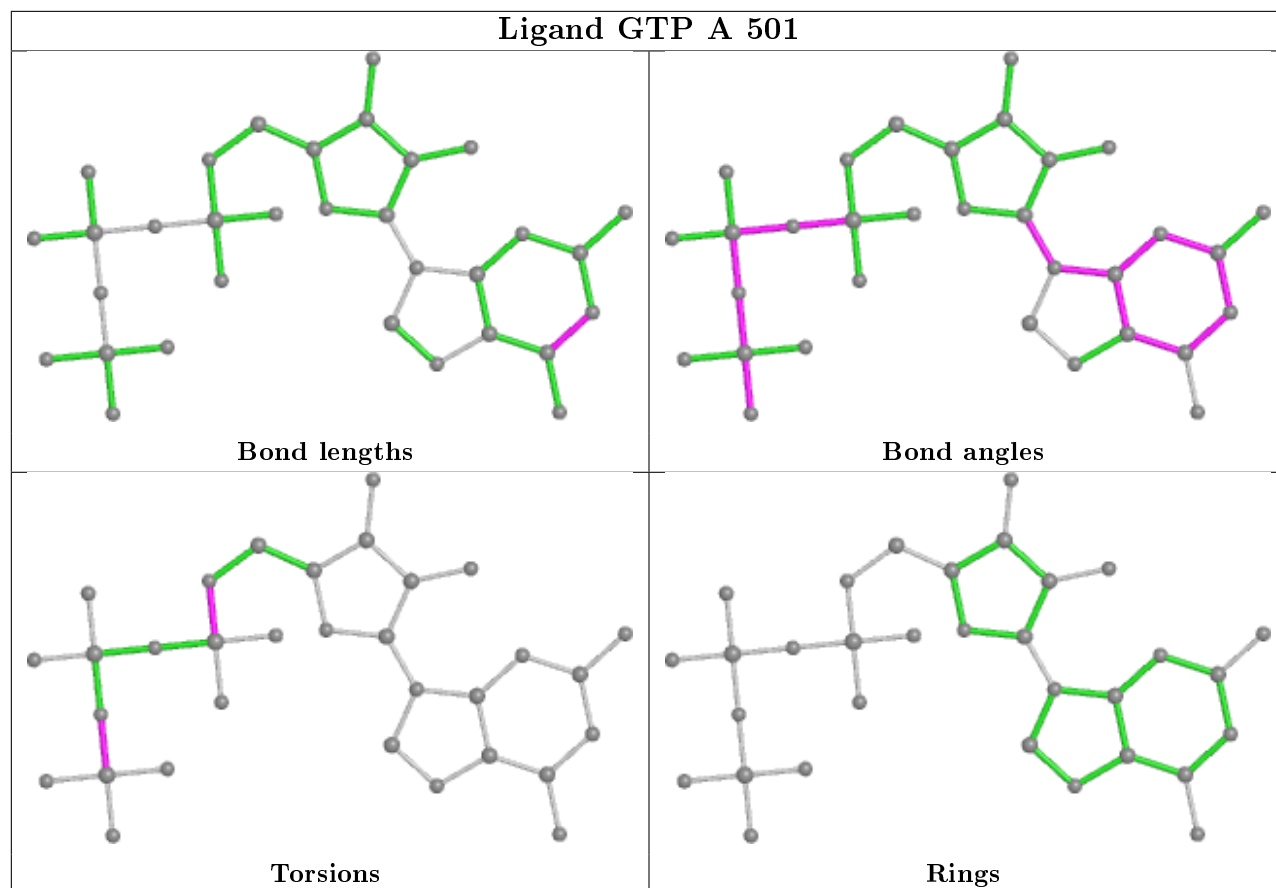


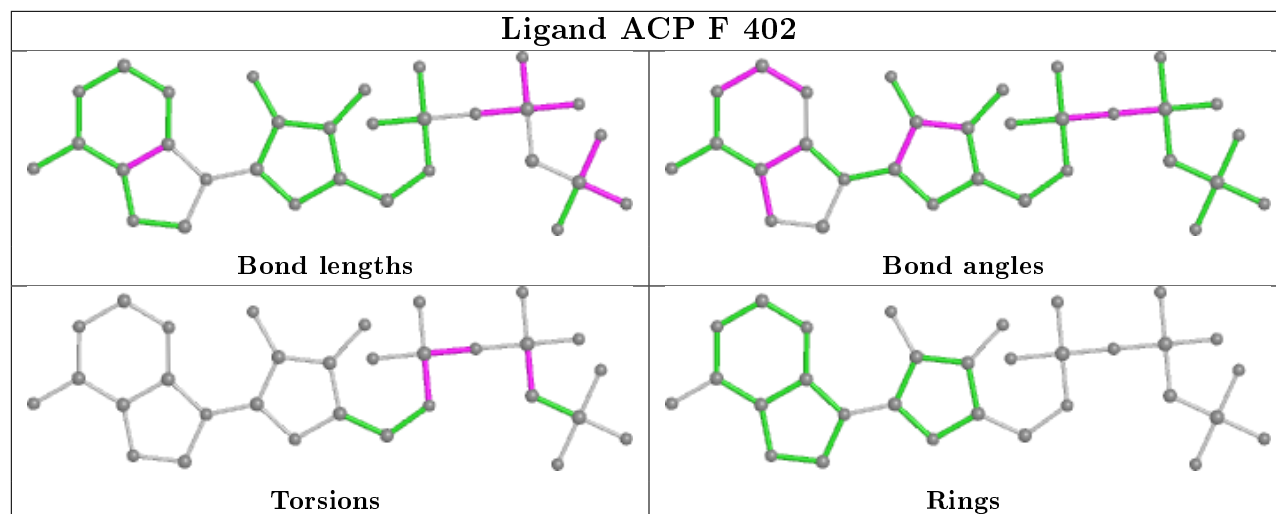
Torsions



Rings







5.7 Other polymers [i](#)

There are no such residues in this entry.

5.8 Polymer linkage issues [i](#)

There are no chain breaks in this entry.

6 Fit of model and data

6.1 Protein, DNA and RNA chains

In the following table, the column labelled ‘#RSRZ> 2’ contains the number (and percentage) of RSRZ outliers, followed by percent RSRZ outliers for the chain as percentile scores relative to all X-ray entries and entries of similar resolution. The OWAB column contains the minimum, median, 95th percentile and maximum values of the occupancy-weighted average B-factor per residue. The column labelled ‘Q< 0.9’ lists the number of (and percentage) of residues with an average occupancy less than 0.9.

Mol	Chain	Analysed	<RSRZ>	#RSRZ>2	OWAB(Å ²)	Q<0.9
1	A	438/451 (97%)	-0.03	1 (0%) 95 96	36, 55, 89, 155	0
1	C	440/451 (97%)	-0.06	1 (0%) 95 96	30, 43, 73, 105	0
2	B	423/445 (95%)	0.06	6 (1%) 75 77	31, 53, 90, 125	2 (0%)
2	D	427/445 (95%)	-0.07	11 (2%) 56 59	37, 62, 98, 129	4 (0%)
3	E	123/143 (86%)	0.18	4 (3%) 46 48	41, 69, 112, 138	0
4	F	344/384 (89%)	1.09	79 (22%) 0 0	43, 81, 147, 165	0
All	All	2195/2319 (94%)	0.16	102 (4%) 32 35	30, 58, 110, 165	6 (0%)

All (102) RSRZ outliers are listed below:

Mol	Chain	Res	Type	RSRZ
4	F	173	ILE	9.6
4	F	134	ALA	6.6
4	F	100	ILE	6.4
4	F	182	ILE	6.2
4	F	130	VAL	5.5
1	A	282	TYR	5.4
4	F	253	TYR	5.3
4	F	143	GLU	5.2
4	F	166	ALA	5.1
4	F	132	LEU	4.9
4	F	179	VAL	4.8
4	F	131	PHE	4.8
4	F	169	LEU	4.8
4	F	177	GLY	4.6
4	F	233	PHE	4.6
4	F	135	TYR	4.3
2	B	284	ARG	4.3
4	F	20	LEU	4.2
4	F	99	VAL	4.2

Continued on next page...

Continued from previous page...

Mol	Chain	Res	Type	RSRZ
4	F	139	ARG	4.1
4	F	90	SER	4.1
2	D	401	ARG	4.1
2	B	276	THR	4.0
3	E	26	PRO	3.9
2	D	57	THR	3.9
4	F	225	SER	3.9
4	F	231	ALA	3.8
4	F	178	GLN	3.8
4	F	152	SER	3.8
4	F	32	LYS	3.6
4	F	170	LEU	3.6
4	F	137	ARG	3.6
4	F	172	PHE	3.6
4	F	161	LEU	3.6
4	F	259	GLY	3.4
4	F	234	GLN	3.4
2	D	400	ARG	3.4
4	F	240	LEU	3.4
4	F	162	ILE	3.3
4	F	181	VAL	3.3
4	F	17	VAL	3.3
4	F	244	CYS	3.2
4	F	101	TYR	3.2
4	F	199	PHE	3.2
4	F	31	ARG	3.2
4	F	256	TYR	3.2
4	F	379	HIS	3.1
4	F	136	ASN	3.0
2	B	277	SER	3.0
3	E	25	LYS	2.9
4	F	176	GLN	2.9
4	F	224	SER	2.9
3	E	143	ALA	2.9
4	F	165	GLU	2.9
4	F	381	HIS	2.9
2	D	177	VAL	2.8
4	F	263	PHE	2.8
4	F	236	LYS	2.8
4	F	133	ALA	2.7
4	F	156	LYS	2.7
4	F	227	PRO	2.7

Continued on next page...

Continued from previous page...

Mol	Chain	Res	Type	RSRZ
2	D	285	ALA	2.7
3	E	142	GLU	2.7
2	D	276	THR	2.7
4	F	147	TRP	2.6
4	F	22	LEU	2.6
4	F	138	ARG	2.6
2	B	245	PRO	2.6
4	F	232	ASN	2.5
4	F	158	GLU	2.5
4	F	267	PHE	2.5
4	F	320	MET	2.5
4	F	191	LEU	2.5
4	F	153	ALA	2.5
2	D	277	SER	2.4
2	D	281	GLN	2.4
4	F	157	GLY	2.3
4	F	243	HIS	2.3
4	F	167	SER	2.3
4	F	245	ILE	2.3
4	F	344	ALA	2.3
4	F	151	SER	2.2
4	F	145	ASN	2.2
4	F	89	GLU	2.2
4	F	168	GLU	2.2
4	F	154	GLY	2.2
4	F	223	THR	2.2
2	B	438	ALA	2.2
4	F	362	ALA	2.2
2	B	339	ASN	2.1
4	F	346	LEU	2.1
1	C	179	THR	2.1
4	F	238	CYS	2.1
2	D	407	TRP	2.1
4	F	155	ALA	2.1
2	D	178	SER	2.1
2	D	404	PHE	2.1
4	F	142	ARG	2.0
4	F	192	LEU	2.0
4	F	343	TYR	2.0
4	F	242	ASN	2.0
4	F	129	GLU	2.0

6.2 Non-standard residues in protein, DNA, RNA chains [i](#)

There are no non-standard protein/DNA/RNA residues in this entry.

6.3 Carbohydrates [i](#)

There are no carbohydrates in this entry.

6.4 Ligands [i](#)

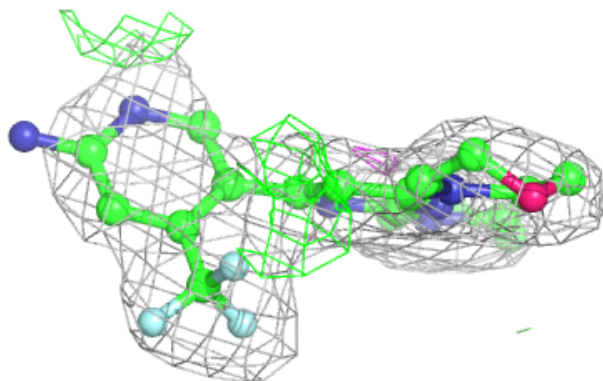
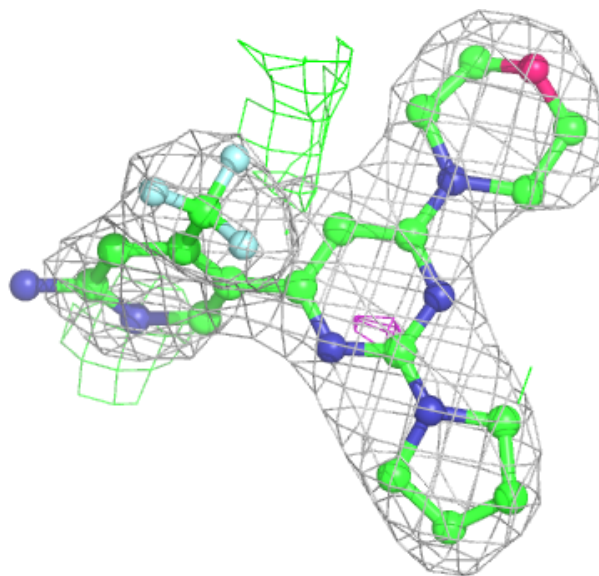
In the following table, the Atoms column lists the number of modelled atoms in the group and the number defined in the chemical component dictionary. The B-factors column lists the minimum, median, 95th percentile and maximum values of B factors of atoms in the group. The column labelled 'Q< 0.9' lists the number of atoms with occupancy less than 0.9.

Mol	Type	Chain	Res	Atoms	RSCC	RSR	B-factors(\AA^2)	Q<0.9
7	CA	A	504	1/1	0.81	0.17	102,102,102,102	0
6	MG	F	401	1/1	0.86	0.05	78,78,78,78	0
6	MG	D	502	1/1	0.90	0.10	55,55,55,55	0
9	UGI	B	501	28/28	0.91	0.17	41,56,73,85	28
12	ACP	F	402	31/31	0.92	0.15	82,98,121,125	0
7	CA	B	505	1/1	0.92	0.25	92,92,92,92	0
7	CA	B	504	1/1	0.93	0.13	118,118,118,118	0
8	GOL	A	505	6/6	0.94	0.12	73,77,90,92	0
7	CA	A	503	1/1	0.95	0.07	71,71,71,71	0
7	CA	C	503	1/1	0.96	0.12	63,63,63,63	0
6	MG	A	502	1/1	0.96	0.14	37,37,37,37	0
10	GDP	D	501	28/28	0.97	0.12	45,55,64,65	0
11	MES	B	506	12/12	0.97	0.14	48,53,69,71	0
6	MG	C	502	1/1	0.98	0.15	36,36,36,36	0
5	GTP	A	501	32/32	0.98	0.14	29,38,43,55	0
10	GDP	B	502	28/28	0.99	0.15	27,37,41,44	0
5	GTP	C	501	32/32	0.99	0.14	27,32,38,46	0
6	MG	B	503	1/1	0.99	0.19	33,33,33,33	0

The following is a graphical depiction of the model fit to experimental electron density of all instances of the Ligand of Interest. In addition, ligands with molecular weight > 250 and outliers as shown on the geometry validation Tables will also be included. Each fit is shown from different orientation to approximate a three-dimensional view.

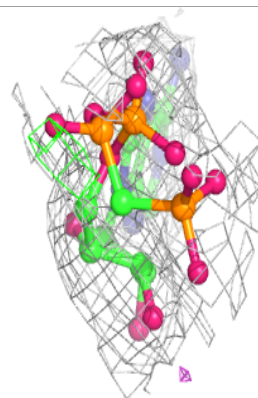
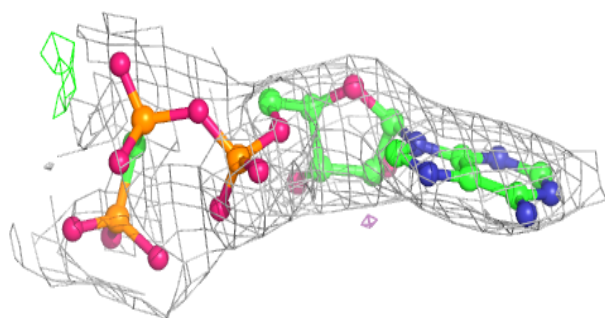
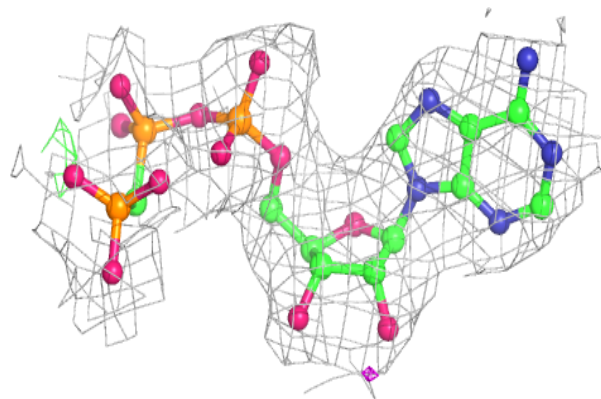
Electron density around UGI B 501:

$2mF_o-DF_c$ (at 0.7 rmsd) in gray
 mF_o-DF_c (at 3 rmsd) in purple (negative)
and green (positive)

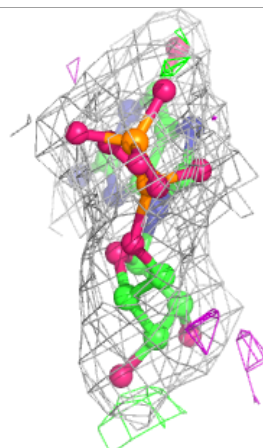
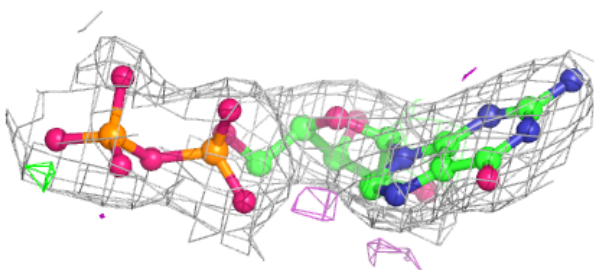
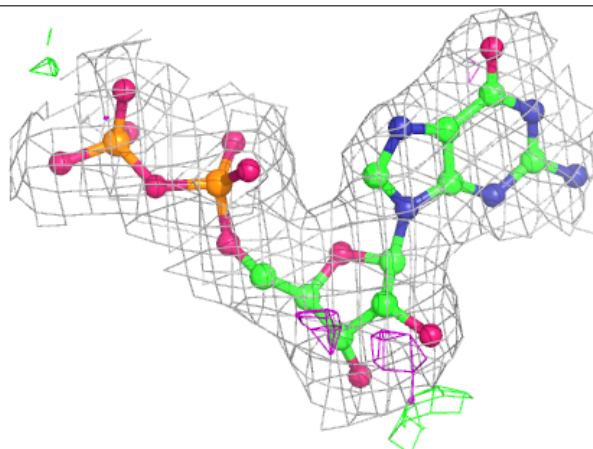


Electron density around ACP F 402:

$2mF_o - DF_c$ (at 0.7 rmsd) in gray
 $mF_o - DF_c$ (at 3 rmsd) in purple (negative)
and green (positive)

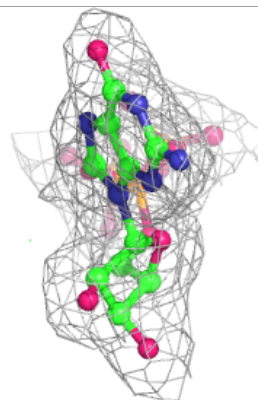
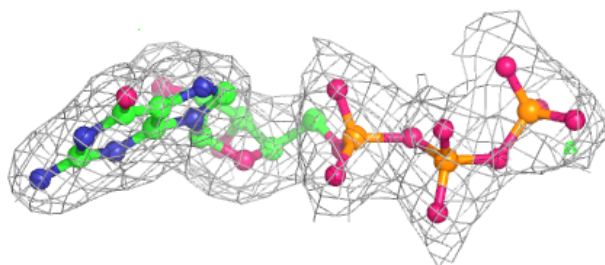
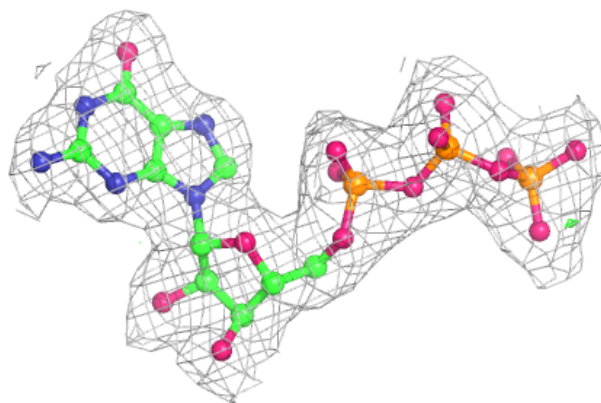
**Electron density around GDP D 501:**

$2mF_o - DF_c$ (at 0.7 rmsd) in gray
 $mF_o - DF_c$ (at 3 rmsd) in purple (negative)
and green (positive)

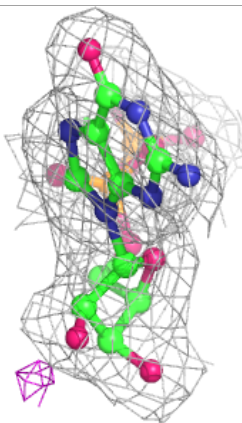
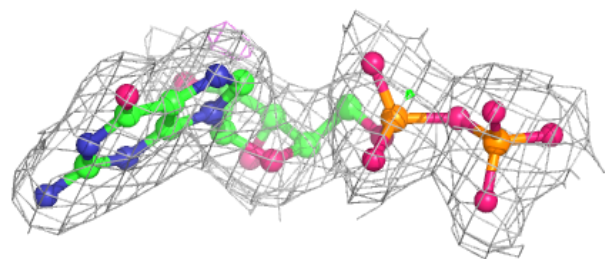
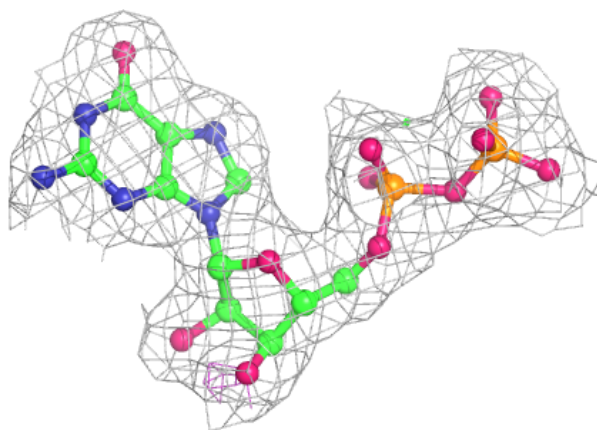


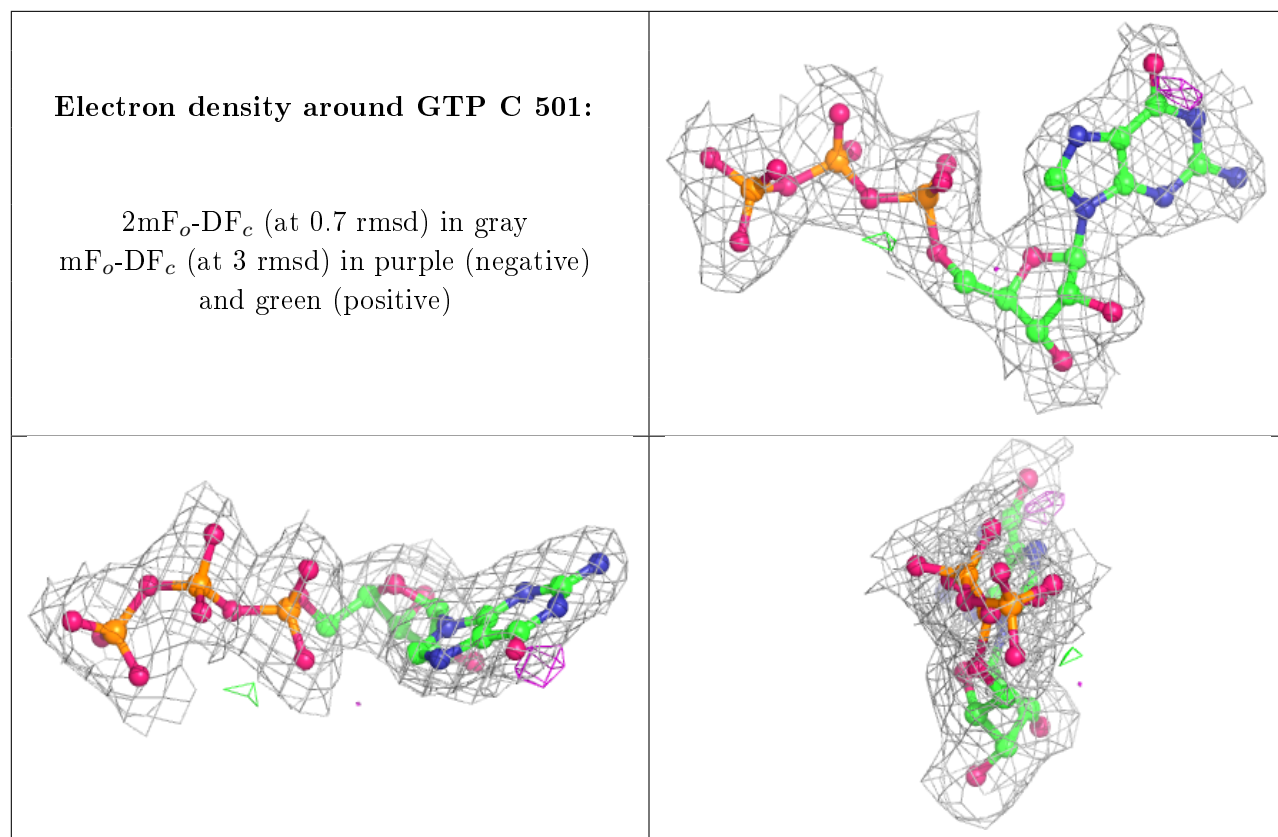
Electron density around GTP A 501:

$2mF_o-DF_c$ (at 0.7 rmsd) in gray
 mF_o-DF_c (at 3 rmsd) in purple (negative)
and green (positive)

**Electron density around GDP B 502:**

$2mF_o-DF_c$ (at 0.7 rmsd) in gray
 mF_o-DF_c (at 3 rmsd) in purple (negative)
and green (positive)





6.5 Other polymers [i](#)

There are no such residues in this entry.