



# wwPDB X-ray Structure Validation Summary Report ⓘ

May 25, 2020 – 04:41 am BST

PDB ID : 5M8G  
Title : Tubulin-MTD265 complex  
Authors : Bohnacker, T.; Protá, A.E.; Steinmetz, M.O.; Wymann, M.P.  
Deposited on : 2016-10-28  
Resolution : 2.15 Å(reported)

This is a wwPDB X-ray Structure Validation Summary Report for a publicly released PDB entry.

We welcome your comments at [validation@mail.wwpdb.org](mailto:validation@mail.wwpdb.org)

A user guide is available at

<https://www.wwpdb.org/validation/2017/XrayValidationReportHelp>

with specific help available everywhere you see the ⓘ symbol.

---

The following versions of software and data (see [references ⓘ](#)) were used in the production of this report:

MolProbity : 4.02b-467  
Mogul : 1.8.5 (274361), CSD as541be (2020)  
Xtriage (Phenix) : 1.13  
EDS : 2.11  
buster-report : 1.1.7 (2018)  
Percentile statistics : 20191225.v01 (using entries in the PDB archive December 25th 2019)  
Refmac : 5.8.0158  
CCP4 : 7.0.044 (Gargrove)  
Ideal geometry (proteins) : Engh & Huber (2001)  
Ideal geometry (DNA, RNA) : Parkinson et al. (1996)  
Validation Pipeline (wwPDB-VP) : 2.11

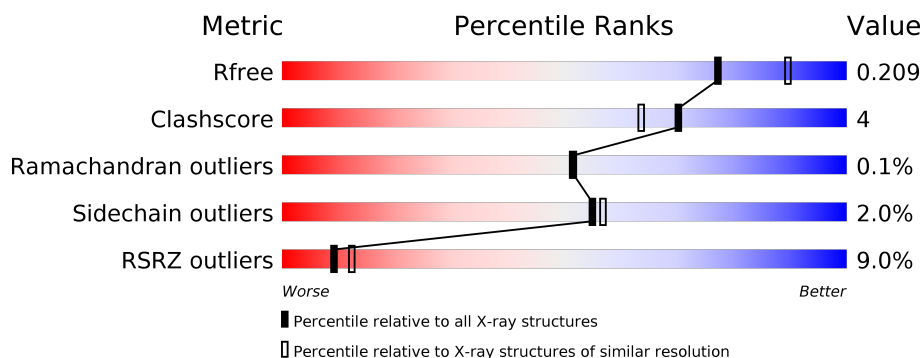
# 1 Overall quality at a glance ⓘ

The following experimental techniques were used to determine the structure:

*X-RAY DIFFRACTION*

The reported resolution of this entry is 2.15 Å.

Percentile scores (ranging between 0-100) for global validation metrics of the entry are shown in the following graphic. The table shows the number of entries on which the scores are based.



Metric	Whole archive (#Entries)	Similar resolution (#Entries, resolution range(Å))
$R_{free}$	130704	2523 (2.16-2.12)
Clashscore	141614	2653 (2.16-2.12)
Ramachandran outliers	138981	2618 (2.16-2.12)
Sidechain outliers	138945	2617 (2.16-2.12)
RSRZ outliers	127900	2485 (2.16-2.12)

The table below summarises the geometric issues observed across the polymeric chains and their fit to the electron density. The red, orange, yellow and green segments on the lower bar indicate the fraction of residues that contain outliers for  $\geq 3$ , 2, 1 and 0 types of geometric quality criteria respectively. A grey segment represents the fraction of residues that are not modelled. The numeric value for each fraction is indicated below the corresponding segment, with a dot representing fractions  $\leq 5\%$ . The upper red bar (where present) indicates the fraction of residues that have poor fit to the electron density. The numeric value is given above the bar.

Mol	Chain	Length	Quality of chain
1	A	451	<div> <div>5%</div> <div> <div></div> <div>86%</div> <div>12%</div> <div>•</div> </div> </div>
1	C	451	<div> <div>2%</div> <div> <div></div> <div>89%</div> <div>8%</div> <div>••</div> </div> </div>
2	B	445	<div> <div>4%</div> <div> <div></div> <div>84%</div> <div>11%</div> <div>5%</div> </div> </div>
2	D	445	<div> <div>9%</div> <div> <div></div> <div>83%</div> <div>13%</div> <div>•</div> </div> </div>
3	E	143	<div> <div>10%</div> <div> <div></div> <div>77%</div> <div>9%</div> <div>14%</div> </div> </div>
4	F	384	<div> <div>24%</div> <div> <div></div> <div>79%</div> <div>7%</div> <div>•</div> <div>14%</div> </div> </div>

## 2 Entry composition

There are 13 unique types of molecules in this entry. The entry contains 18016 atoms, of which 0 are hydrogens and 0 are deuteriums.

In the tables below, the ZeroOcc column contains the number of atoms modelled with zero occupancy, the AltConf column contains the number of residues with at least one atom in alternate conformation and the Trace column contains the number of residues modelled with at most 2 atoms.

- Molecule 1 is a protein called Tubulin alpha-1B chain.

Mol	Chain	Residues	Atoms					ZeroOcc	AltConf	Trace
1	A	440	Total	C	N	O	S	0	1	0
			3436	2172	584	657	23			
1	C	440	Total	C	N	O	S	0	0	0
			3437	2175	584	656	22			

- Molecule 2 is a protein called Tubulin beta-2B chain.

Mol	Chain	Residues	Atoms					ZeroOcc	AltConf	Trace
2	B	423	Total	C	N	O	S	0	0	0
			3331	2094	568	643	26			
2	D	427	Total	C	N	O	S	0	0	0
			3349	2101	572	650	26			

- Molecule 3 is a protein called Stathmin-4.

Mol	Chain	Residues	Atoms					ZeroOcc	AltConf	Trace
3	E	123	Total	C	N	O	S	0	0	0
			1014	625	183	201	5			

There are 2 discrepancies between the modelled and reference sequences:

Chain	Residue	Modelled	Actual	Comment	Reference
E	3	MET	-	initiating methionine	UNP P63043
E	4	ALA	-	expression tag	UNP P63043

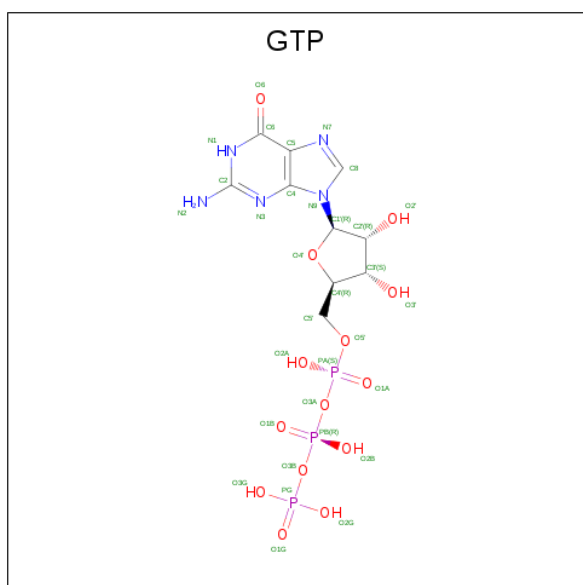
- Molecule 4 is a protein called Tubulin-Tyrosine Ligase.

Mol	Chain	Residues	Atoms					ZeroOcc	AltConf	Trace
4	F	331	Total	C	N	O	S	0	0	0
			2724	1756	461	493	14			

There are 6 discrepancies between the modelled and reference sequences:

Chain	Residue	Modelled	Actual	Comment	Reference
F	379	HIS	-	expression tag	UNP E1BQ43
F	380	HIS	-	expression tag	UNP E1BQ43
F	381	HIS	-	expression tag	UNP E1BQ43
F	382	HIS	-	expression tag	UNP E1BQ43
F	383	HIS	-	expression tag	UNP E1BQ43
F	384	HIS	-	expression tag	UNP E1BQ43

- Molecule 5 is GUANOSINE-5'-TRIPHOSPHATE (three-letter code: GTP) (formula:  $C_{10}H_{16}N_5O_{14}P_3$ ).



Mol	Chain	Residues	Atoms					ZeroOcc	AltConf
5	A	1	Total	C	N	O	P	0	0
			32	10	5	14	3		
5	C	1	Total	C	N	O	P	0	0
			32	10	5	14	3		

- Molecule 6 is MAGNESIUM ION (three-letter code: MG) (formula: Mg).

Mol	Chain	Residues	Atoms		ZeroOcc	AltConf
6	B	1	Total	Mg	0	0
			1	1		
6	A	1	Total	Mg	0	0
			1	1		
6	D	1	Total	Mg	0	0
			1	1		
6	C	1	Total	Mg	0	0
			1	1		

Continued on next page...

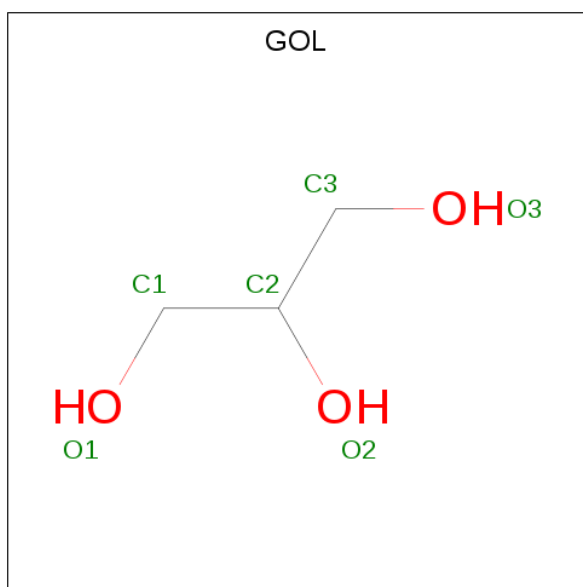
*Continued from previous page...*

Mol	Chain	Residues	Atoms		ZeroOcc	AltConf
6	F	1	Total	Mg	0	0
			1	1		

- Molecule 7 is CALCIUM ION (three-letter code: CA) (formula: Ca).

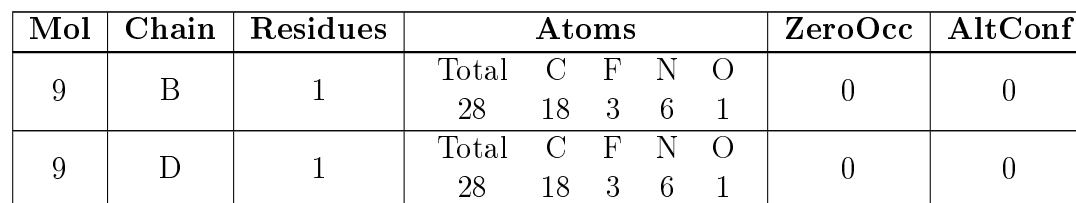
Mol	Chain	Residues	Atoms		ZeroOcc	AltConf
7	B	2	Total	Ca	0	0
			2	2		
7	A	2	Total	Ca	0	0
			2	2		
7	C	1	Total	Ca	0	0
			1	1		

- Molecule 8 is GLYCEROL (three-letter code: GOL) (formula: C<sub>3</sub>H<sub>8</sub>O<sub>3</sub>).



Mol	Chain	Residues	Atoms			ZeroOcc	AltConf
8	A	1	Total	C	O	0	0
			6	3	3		

- Molecule 9 is 5-(2-morpholin-4-yl-6-pyrrolidin-1-yl-pyrimidin-4-yl)-4-(trifluoromethyl)pyridine-2-amine (three-letter code: 918) (formula: C<sub>18</sub>H<sub>21</sub>F<sub>3</sub>N<sub>6</sub>O).



- 

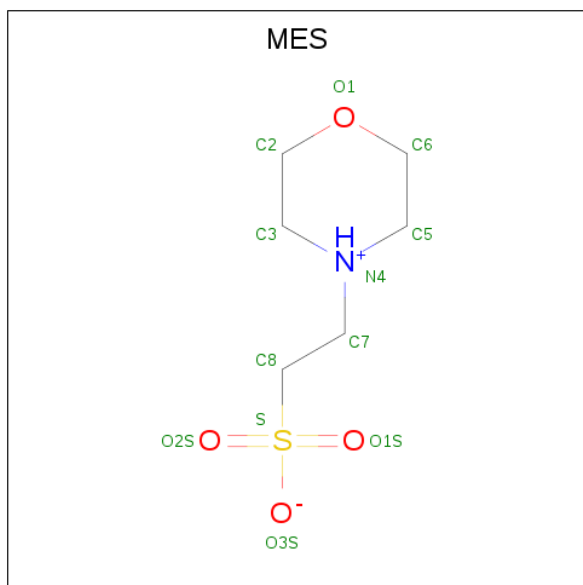
Mol	Chain	Residues	Atoms					ZeroOcc	AltConf
10	B	1	Total	C	N	O	P	0	0
			28	10	5	11	2		

*Continued on next page...*

*Continued from previous page...*

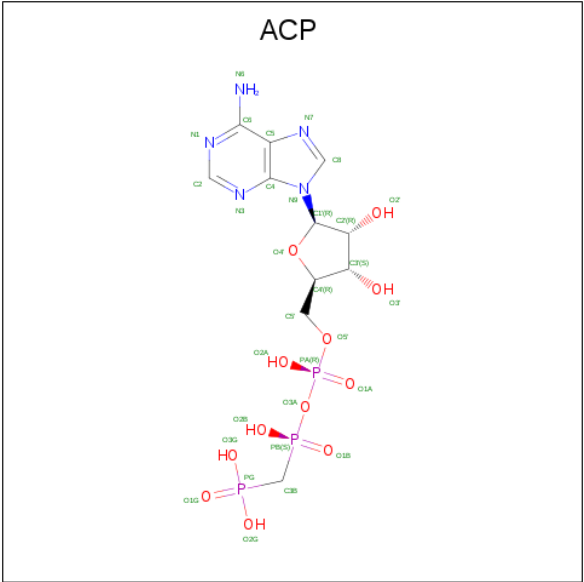
Mol	Chain	Residues	Atoms					ZeroOcc	AltConf
10	D	1	Total	C	N	O	P	0	0
			28	10	5	11	2		

- Molecule 11 is 2-(N-MORPHOLINO)-ETHANESULFONIC ACID (three-letter code: MES) (formula: C<sub>6</sub>H<sub>13</sub>NO<sub>4</sub>S).



Mol	Chain	Residues	Atoms					ZeroOcc	AltConf
11	B	1	Total	C	N	O	S	0	0
			12	6	1	4	1		
11	D	1	Total	C	N	O	S	0	0
			12	6	1	4	1		

- Molecule 12 is PHOSPHOMETHYLPHOSPHONIC ACID ADENYLATE ESTER (three-letter code: ACP) (formula: C<sub>11</sub>H<sub>18</sub>N<sub>5</sub>O<sub>12</sub>P<sub>3</sub>).



Mol	Chain	Residues	Atoms					ZeroOcc	AltConf
12	F	1	Total	C	N	O	P	0	0
			31	11	5	12	3		

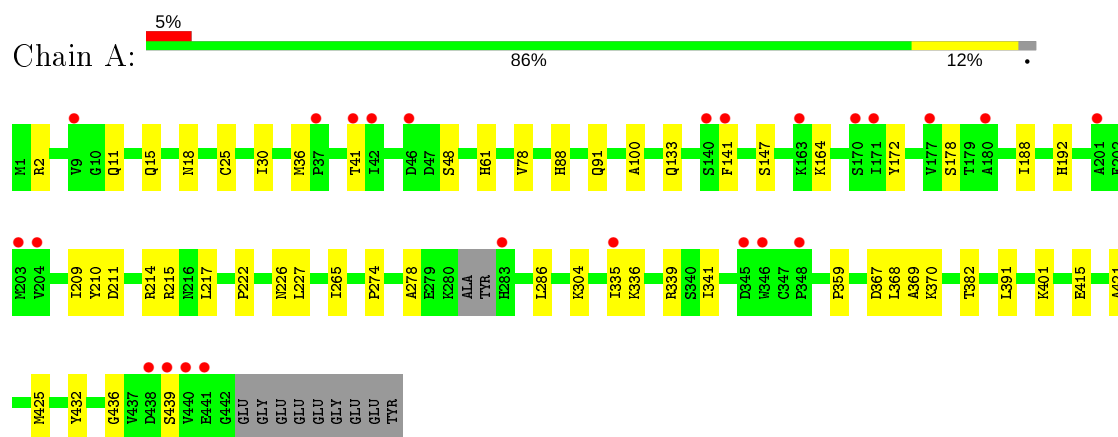
- Molecule 13 is water.

Mol	Chain	Residues	Atoms		ZeroOcc	AltConf
13	A	95	Total	O	0	0
			95	95		
13	B	93	Total	O	0	0
			93	93		
13	C	186	Total	O	0	0
			186	186		
13	D	51	Total	O	0	0
			51	51		
13	E	17	Total	O	0	0
			17	17		
13	F	36	Total	O	0	0
			36	36		

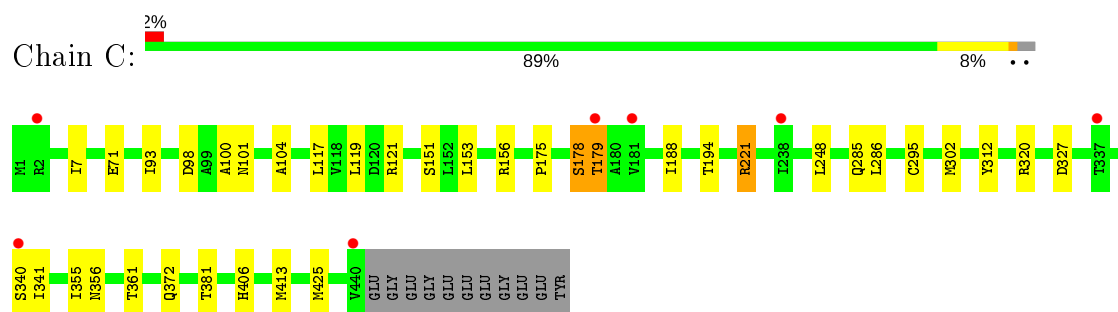
### 3 Residue-property plots [i](#)

These plots are drawn for all protein, RNA and DNA chains in the entry. The first graphic for a chain summarises the proportions of the various outlier classes displayed in the second graphic. The second graphic shows the sequence view annotated by issues in geometry and electron density. Residues are color-coded according to the number of geometric quality criteria for which they contain at least one outlier: green = 0, yellow = 1, orange = 2 and red = 3 or more. A red dot above a residue indicates a poor fit to the electron density ( $RSRZ > 2$ ). Stretches of 2 or more consecutive residues without any outlier are shown as a green connector. Residues present in the sample, but not in the model, are shown in grey.

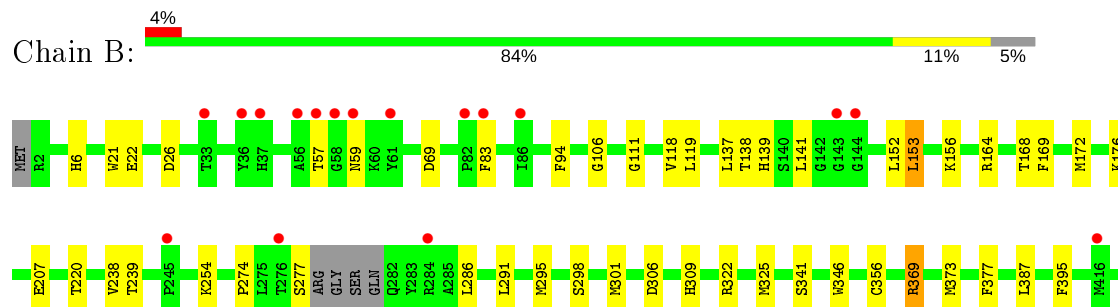
- Molecule 1: Tubulin alpha-1B chain

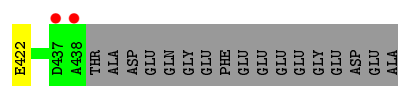


- Molecule 1: Tubulin alpha-1B chain

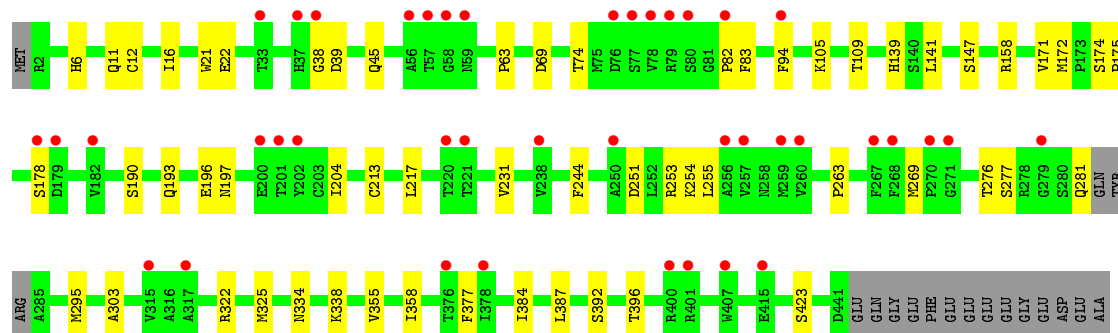
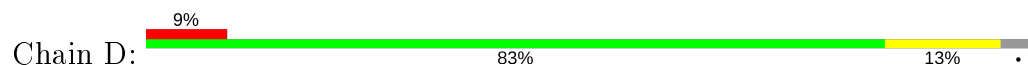


- Molecule 2: Tubulin beta-2B chain

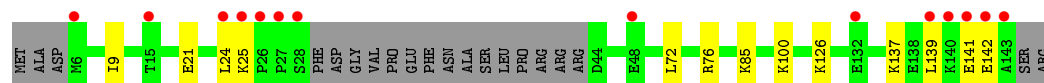
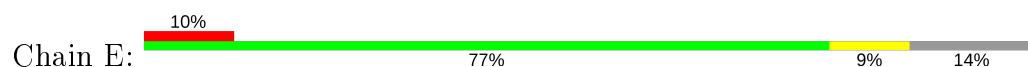




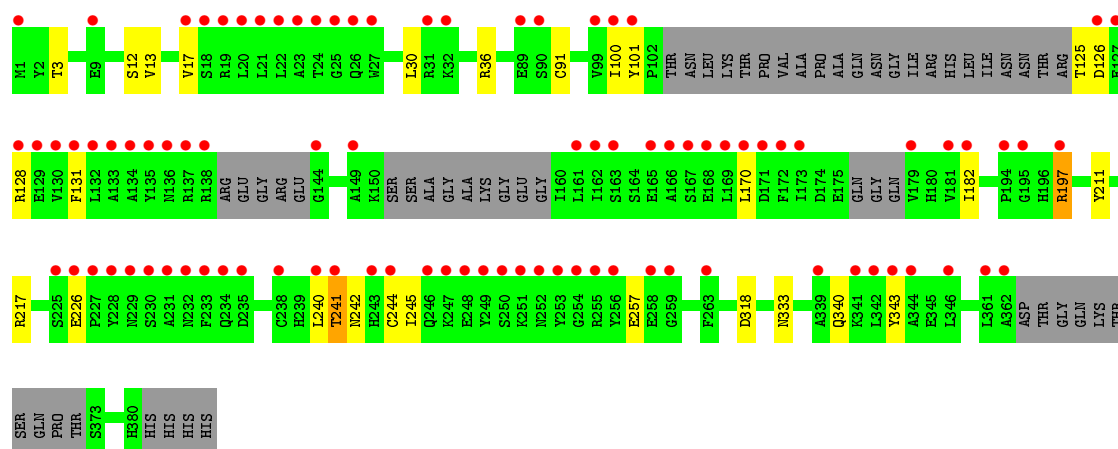
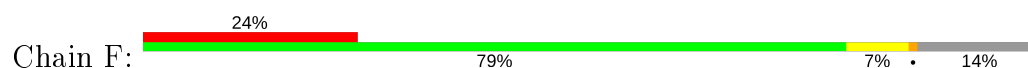
• Molecule 2: Tubulin beta-2B chain



• Molecule 3: Stathmin-4



• Molecule 4: Tubulin-Tyrosine Ligase



## 4 Data and refinement statistics

Property	Value	Source
Space group	P 21 21 21	Depositor
Cell constants a, b, c, $\alpha$ , $\beta$ , $\gamma$	104.77Å 157.51Å 179.24Å 90.00° 90.00° 90.00°	Depositor
Resolution (Å)	49.29 – 2.15 49.29 – 2.15	Depositor EDS
% Data completeness (in resolution range)	99.7 (49.29-2.15) 99.7 (49.29-2.15)	Depositor EDS
$R_{merge}$	0.13	Depositor
$R_{sym}$	(Not available)	Depositor
$\langle I/\sigma(I) \rangle$ <sup>1</sup>	1.16 (at 2.14Å)	Xtriage
Refinement program	PHENIX (1.10.1 _2155: ???)	Depositor
R, $R_{free}$	0.171 , 0.208 0.172 , 0.209	Depositor DCC
$R_{free}$ test set	8071 reflections (5.00%)	wwPDB-VP
Wilson B-factor (Å <sup>2</sup> )	46.0	Xtriage
Anisotropy	0.144	Xtriage
Bulk solvent $k_{sol}$ (e/Å <sup>3</sup> ), $B_{sol}$ (Å <sup>2</sup> )	0.34 , 51.5	EDS
L-test for twinning <sup>2</sup>	$\langle  L  \rangle = 0.49$ , $\langle L^2 \rangle = 0.32$	Xtriage
Estimated twinning fraction	No twinning to report.	Xtriage
$F_o, F_c$ correlation	0.97	EDS
Total number of atoms	18016	wwPDB-VP
Average B, all atoms (Å <sup>2</sup> )	64.0	wwPDB-VP

Xtriage's analysis on translational NCS is as follows: *The largest off-origin peak in the Patterson function is 2.47% of the height of the origin peak. No significant pseudotranslation is detected.*

<sup>1</sup>Intensities estimated from amplitudes.

<sup>2</sup>Theoretical values of  $\langle |L| \rangle$ ,  $\langle L^2 \rangle$  for acentric reflections are 0.5, 0.333 respectively for untwinned datasets, and 0.375, 0.2 for perfectly twinned datasets.

## 5 Model quality [i](#)

### 5.1 Standard geometry [i](#)

Bond lengths and bond angles in the following residue types are not validated in this section: GDP, GOL, MG, CA, GTP, ACP, 918, MES

The Z score for a bond length (or angle) is the number of standard deviations the observed value is removed from the expected value. A bond length (or angle) with  $|Z| > 5$  is considered an outlier worth inspection. RMSZ is the root-mean-square of all Z scores of the bond lengths (or angles).

Mol	Chain	Bond lengths		Bond angles	
		RMSZ	# $ Z  > 5$	RMSZ	# $ Z  > 5$
1	A	0.39	0/3515	0.53	0/4769
1	C	0.48	1/3515 (0.0%)	0.58	0/4772
2	B	0.41	0/3405	0.56	0/4612
2	D	0.36	0/3422	0.52	0/4635
3	E	0.37	0/1022	0.48	0/1356
4	F	0.33	0/2786	0.50	0/3763
All	All	0.40	1/17665 (0.0%)	0.54	0/23907

All (1) bond length outliers are listed below:

Mol	Chain	Res	Type	Atoms	Z	Observed(Å)	Ideal(Å)
1	C	295	CYS	CB-SG	-8.23	1.68	1.82

There are no bond angle outliers.

There are no chirality outliers.

There are no planarity outliers.

### 5.2 Too-close contacts [i](#)

In the following table, the Non-H and H(model) columns list the number of non-hydrogen atoms and hydrogen atoms in the chain respectively. The H(added) column lists the number of hydrogen atoms added and optimized by MolProbity. The Clashes column lists the number of clashes within the asymmetric unit, whereas Symm-Clashes lists symmetry related clashes.

Mol	Chain	Non-H	H(model)	H(added)	Clashes	Symm-Clashes
1	A	3436	0	3348	29	0
1	C	3437	0	3349	19	0
2	B	3331	0	3208	26	0
2	D	3349	0	3223	34	0

*Continued on next page...*

*Continued from previous page...*

Mol	Chain	Non-H	H(model)	H(added)	Clashes	Symm-Clashes
3	E	1014	0	1029	9	0
4	F	2724	0	2698	15	0
5	A	32	0	12	0	0
5	C	32	0	12	0	0
6	A	1	0	0	0	0
6	B	1	0	0	0	0
6	C	1	0	0	0	0
6	D	1	0	0	0	0
6	F	1	0	0	0	0
7	A	2	0	0	0	0
7	B	2	0	0	0	0
7	C	1	0	0	0	0
8	A	6	0	8	0	0
9	B	28	0	0	0	0
9	D	28	0	0	0	0
10	B	28	0	12	0	0
10	D	28	0	12	1	0
11	B	12	0	12	0	0
11	D	12	0	12	1	0
12	F	31	0	14	1	0
13	A	95	0	0	0	0
13	B	93	0	0	2	0
13	C	186	0	0	1	0
13	D	51	0	0	1	0
13	E	17	0	0	1	0
13	F	36	0	0	0	0
All	All	18016	0	16949	124	0

The all-atom clashscore is defined as the number of clashes found per 1000 atoms (including hydrogen atoms). The all-atom clashscore for this structure is 4.

The worst 5 of 124 close contacts within the same asymmetric unit are listed below, sorted by their clash magnitude.

Atom-1	Atom-2	Interatomic distance (Å)	Clash overlap (Å)
2:D:158:ARG:NH1	2:D:197:ASN:OD1	2.22	0.73
4:F:318:ASP:OD2	12:F:402:ACP:O3G	2.06	0.72
2:D:269:MET:HG3	2:D:303:ALA:HB3	1.79	0.65
1:A:335:ILE:HG23	1:A:339:ARG:HG3	1.79	0.64
2:D:295:MET:HE2	2:D:377:PHE:HB2	1.80	0.64

There are no symmetry-related clashes.

## 5.3 Torsion angles [i](#)

### 5.3.1 Protein backbone [i](#)

In the following table, the Percentiles column shows the percent Ramachandran outliers of the chain as a percentile score with respect to all X-ray entries followed by that with respect to entries of similar resolution.

The Analysed column shows the number of residues for which the backbone conformation was analysed, and the total number of residues.

Mol	Chain	Analysed	Favoured	Allowed	Outliers	Percentiles	
1	A	437/451 (97%)	427 (98%)	9 (2%)	1 (0%)	47	45
1	C	438/451 (97%)	431 (98%)	6 (1%)	1 (0%)	47	45
2	B	419/445 (94%)	409 (98%)	10 (2%)	0	100	100
2	D	423/445 (95%)	416 (98%)	7 (2%)	0	100	100
3	E	119/143 (83%)	118 (99%)	1 (1%)	0	100	100
4	F	319/384 (83%)	314 (98%)	5 (2%)	0	100	100
All	All	2155/2319 (93%)	2115 (98%)	38 (2%)	2 (0%)	51	51

All (2) Ramachandran outliers are listed below:

Mol	Chain	Res	Type
1	A	178	SER
1	C	178	SER

### 5.3.2 Protein sidechains [i](#)

In the following table, the Percentiles column shows the percent sidechain outliers of the chain as a percentile score with respect to all X-ray entries followed by that with respect to entries of similar resolution.

The Analysed column shows the number of residues for which the sidechain conformation was analysed, and the total number of residues.

Mol	Chain	Analysed	Rotameric	Outliers	Percentiles	
1	A	372/379 (98%)	367 (99%)	5 (1%)	69	73
1	C	371/379 (98%)	364 (98%)	7 (2%)	57	59
2	B	366/383 (96%)	357 (98%)	9 (2%)	47	47
2	D	368/383 (96%)	361 (98%)	7 (2%)	57	59
3	E	110/127 (87%)	110 (100%)	0	100	100

*Continued on next page...*

*Continued from previous page...*

Mol	Chain	Analysed	Rotameric	Outliers	Percentiles	
4	F	300/342 (88%)	290 (97%)	10 (3%)	38	35
All	All	1887/1993 (95%)	1849 (98%)	38 (2%)	55	57

5 of 38 residues with a non-rotameric sidechain are listed below:

Mol	Chain	Res	Type
1	C	302	MET
2	D	139	HIS
4	F	226	GLU
1	C	361	THR
2	D	196	GLU

Some sidechains can be flipped to improve hydrogen bonding and reduce clashes. All (3) such sidechains are listed below:

Mol	Chain	Res	Type
4	F	242	ASN
4	F	252	ASN
4	F	348	GLN

### 5.3.3 RNA ⓘ

There are no RNA molecules in this entry.

## 5.4 Non-standard residues in protein, DNA, RNA chains ⓘ

There are no non-standard protein/DNA/RNA residues in this entry.

## 5.5 Carbohydrates ⓘ

There are no carbohydrates in this entry.

## 5.6 Ligand geometry ⓘ

Of 20 ligands modelled in this entry, 10 are monoatomic - leaving 10 for Mogul analysis.

In the following table, the Counts columns list the number of bonds (or angles) for which Mogul statistics could be retrieved, the number of bonds (or angles) that are observed in the model and the number of bonds (or angles) that are defined in the Chemical Component Dictionary. The Link column lists molecule types, if any, to which the group is linked. The Z score for a bond

length (or angle) is the number of standard deviations the observed value is removed from the expected value. A bond length (or angle) with  $|Z| > 2$  is considered an outlier worth inspection. RMSZ is the root-mean-square of all Z scores of the bond lengths (or angles).

Mol	Type	Chain	Res	Link	Bond lengths			Bond angles		
					Counts	RMSZ	# Z  > 2	Counts	RMSZ	# Z  > 2
11	MES	B	506	-	12,12,12	1.89	1 (8%)	14,16,16	1.98	4 (28%)
11	MES	D	504	-	12,12,12	2.12	1 (8%)	14,16,16	1.91	4 (28%)
12	ACP	F	402	6	27,33,33	1.72	6 (22%)	32,52,52	1.34	4 (12%)
8	GOL	A	505	-	5,5,5	0.33	0	5,5,5	0.37	0
5	GTP	C	501	6	26,34,34	0.94	1 (3%)	33,54,54	1.81	7 (21%)
5	GTP	A	501	6	26,34,34	0.95	1 (3%)	33,54,54	1.68	6 (18%)
9	918	D	501	-	31,31,31	1.25	4 (12%)	41,45,45	1.91	9 (21%)
10	GDP	B	502	6	24,30,30	1.12	2 (8%)	31,47,47	2.03	7 (22%)
10	GDP	D	502	6	24,30,30	1.18	2 (8%)	31,47,47	1.98	8 (25%)
9	918	B	501	-	31,31,31	1.34	3 (9%)	41,45,45	1.74	11 (26%)

In the following table, the Chirals column lists the number of chiral outliers, the number of chiral centers analysed, the number of these observed in the model and the number defined in the Chemical Component Dictionary. Similar counts are reported in the Torsion and Rings columns. '-' means no outliers of that kind were identified.

Mol	Type	Chain	Res	Link	Chirals	Torsions	Rings
11	MES	B	506	-	-	0/6/14/14	0/1/1/1
11	MES	D	504	-	-	1/6/14/14	0/1/1/1
12	ACP	F	402	6	-	5/15/38/38	0/3/3/3
8	GOL	A	505	-	-	2/4/4/4	-
5	GTP	C	501	6	-	8/18/38/38	0/3/3/3
5	GTP	A	501	6	-	9/18/38/38	0/3/3/3
9	918	D	501	-	-	0/18/33/33	0/4/4/4
10	GDP	B	502	6	-	5/12/32/32	0/3/3/3
10	GDP	D	502	6	-	4/12/32/32	0/3/3/3
9	918	B	501	-	-	0/18/33/33	0/4/4/4

The worst 5 of 21 bond length outliers are listed below:

Mol	Chain	Res	Type	Atoms	Z	Observed(Å)	Ideal(Å)
11	D	504	MES	C8-S	-7.04	1.67	1.77
11	B	506	MES	C8-S	-6.16	1.68	1.77
12	F	402	ACP	PB-O1B	4.04	1.61	1.51
10	D	502	GDP	C6-C5	3.97	1.48	1.41

*Continued on next page...*

*Continued from previous page...*

Mol	Chain	Res	Type	Atoms	Z	Observed(Å)	Ideal(Å)
9	D	501	918	CAO-CAN	-3.96	1.41	1.50

The worst 5 of 60 bond angle outliers are listed below:

Mol	Chain	Res	Type	Atoms	Z	Observed(°)	Ideal(°)
5	C	501	GTP	N3-C2-N1	-5.63	119.71	127.22
11	B	506	MES	C5-N4-C3	5.21	120.56	108.83
10	B	502	GDP	C2-N3-C4	5.07	121.14	115.36
10	B	502	GDP	C6-C5-C4	-4.79	116.22	120.80
5	A	501	GTP	N3-C2-N1	-4.66	121.01	127.22

There are no chirality outliers.

5 of 34 torsion outliers are listed below:

Mol	Chain	Res	Type	Atoms
12	F	402	ACP	PG-C3B-PB-O1B
12	F	402	ACP	PG-C3B-PB-O2B
12	F	402	ACP	PG-C3B-PB-O3A
12	F	402	ACP	C5'-O5'-PA-O1A
10	B	502	GDP	C5'-O5'-PA-O1A

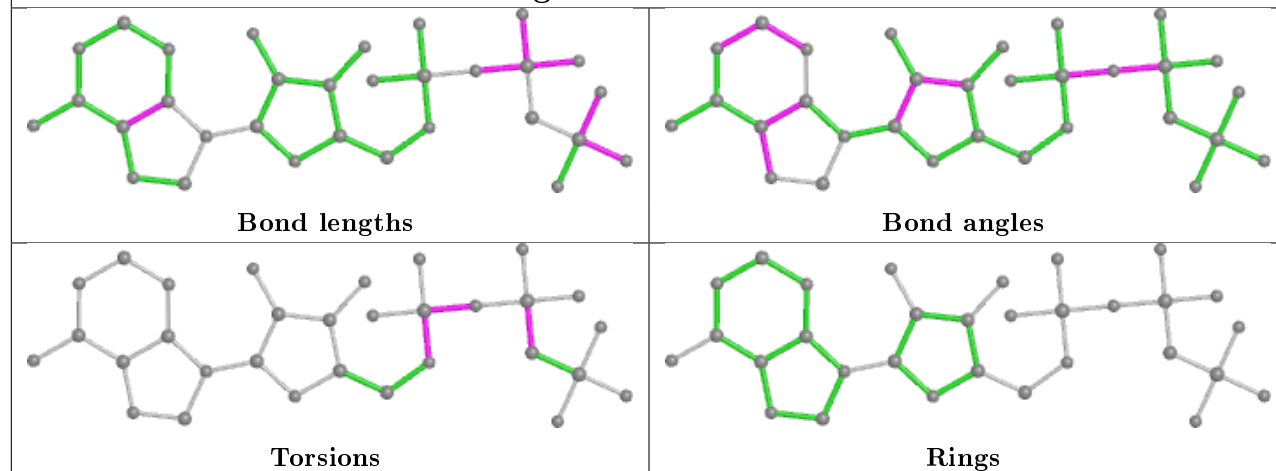
There are no ring outliers.

3 monomers are involved in 3 short contacts:

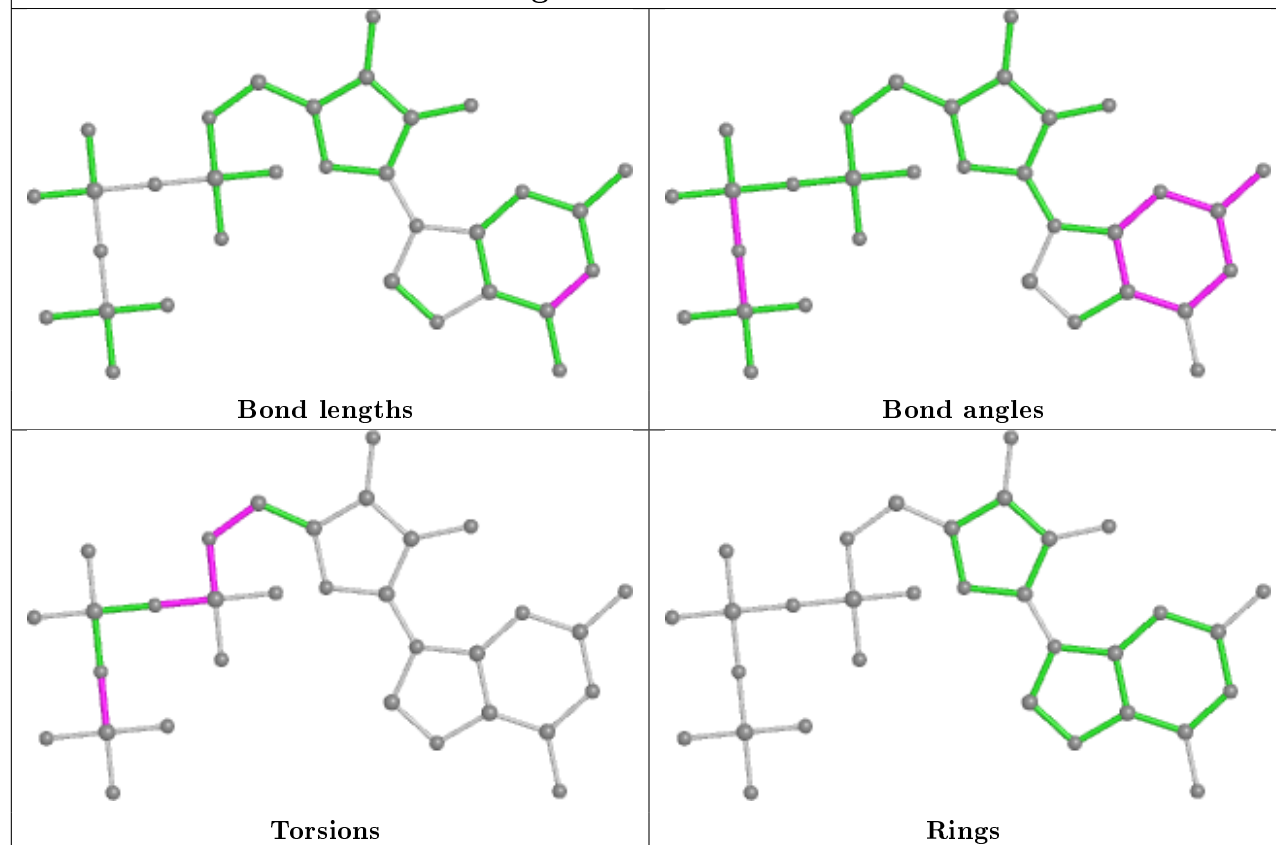
Mol	Chain	Res	Type	Clashes	Symm-Clashes
11	D	504	MES	1	0
12	F	402	ACP	1	0
10	D	502	GDP	1	0

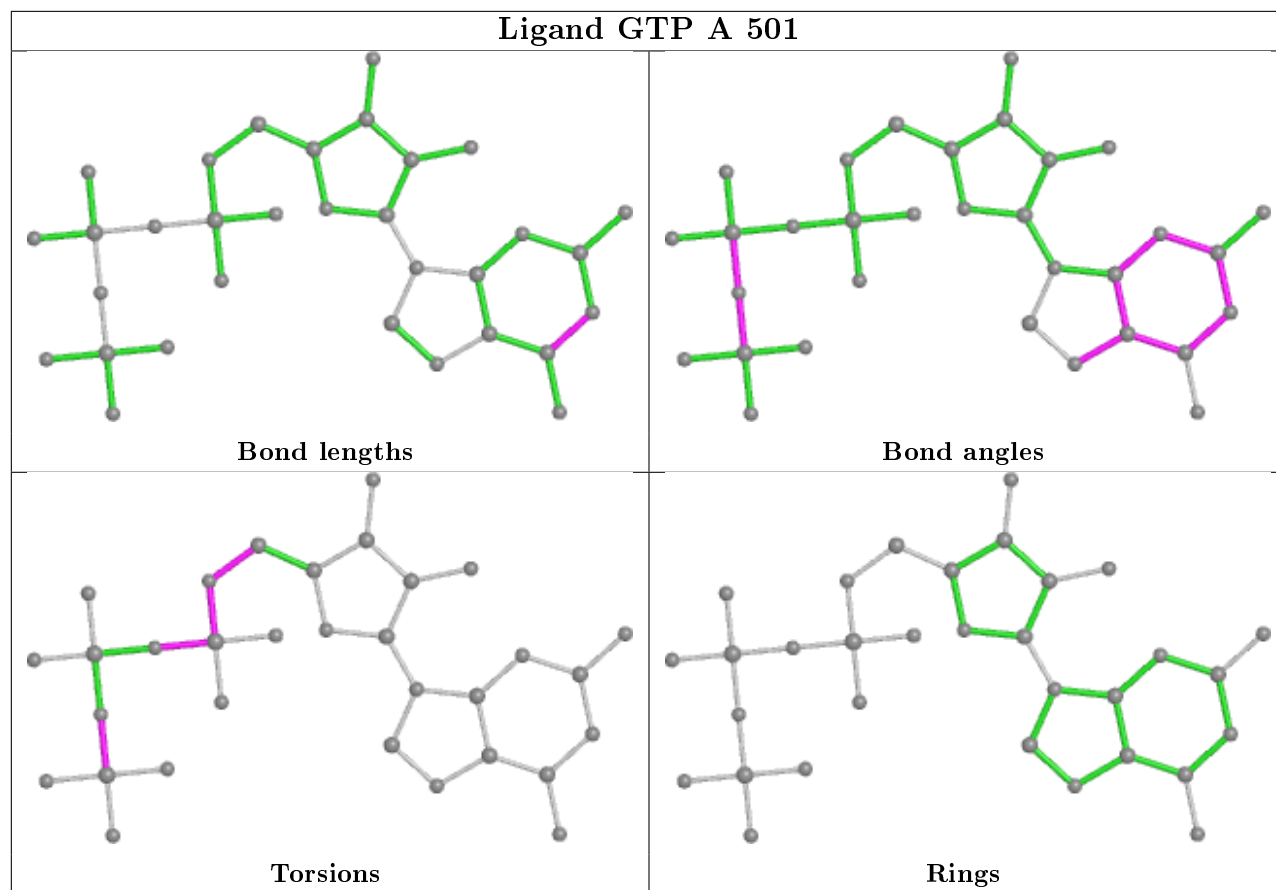
The following is a two-dimensional graphical depiction of Mogul quality analysis of bond lengths, bond angles, torsion angles, and ring geometry for all instances of the Ligand of Interest. In addition, ligands with molecular weight > 250 and outliers as shown on the validation Tables will also be included. For torsion angles, if less than 5% of the Mogul distribution of torsion angles is within 10 degrees of the torsion angle in question, then that torsion angle is considered an outlier. Any bond that is central to one or more torsion angles identified as an outlier by Mogul will be highlighted in the graph. For rings, the root-mean-square deviation (RMSD) between the ring in question and similar rings identified by Mogul is calculated over all ring torsion angles. If the average RMSD is greater than 60 degrees and the minimal RMSD between the ring in question and any Mogul-identified rings is also greater than 60 degrees, then that ring is considered an outlier. The outliers are highlighted in purple. The color gray indicates Mogul did not find sufficient equivalents in the CSD to analyse the geometry.

## Ligand ACP F 402

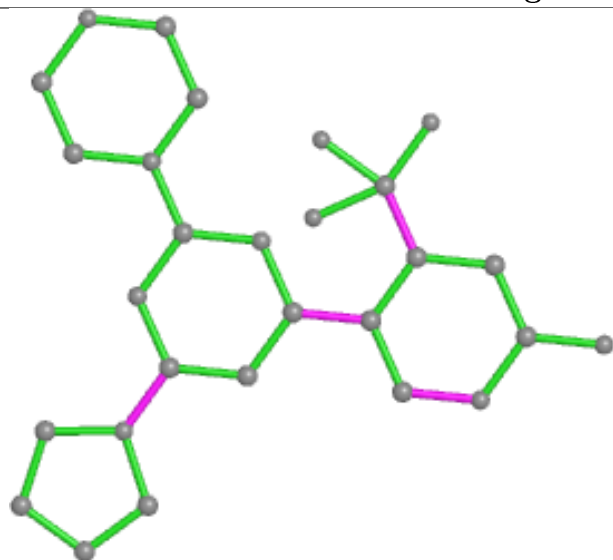


## Ligand GTP C 501

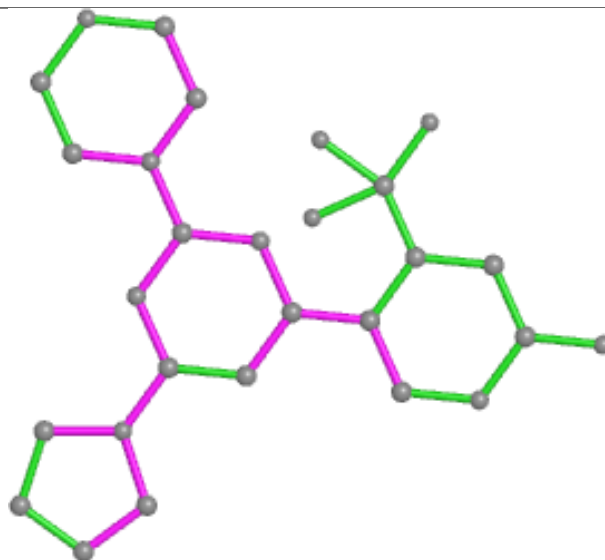




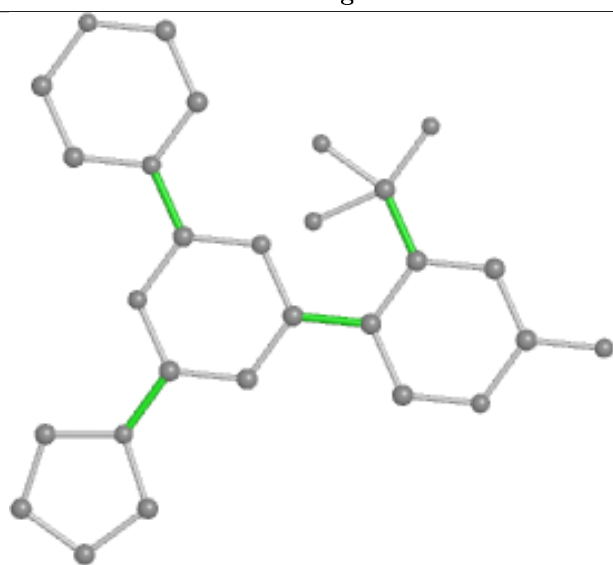
## Ligand 918 D 501



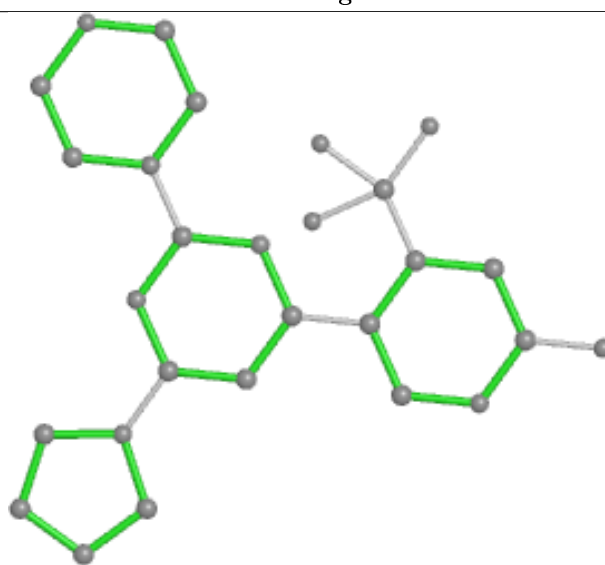
Bond lengths



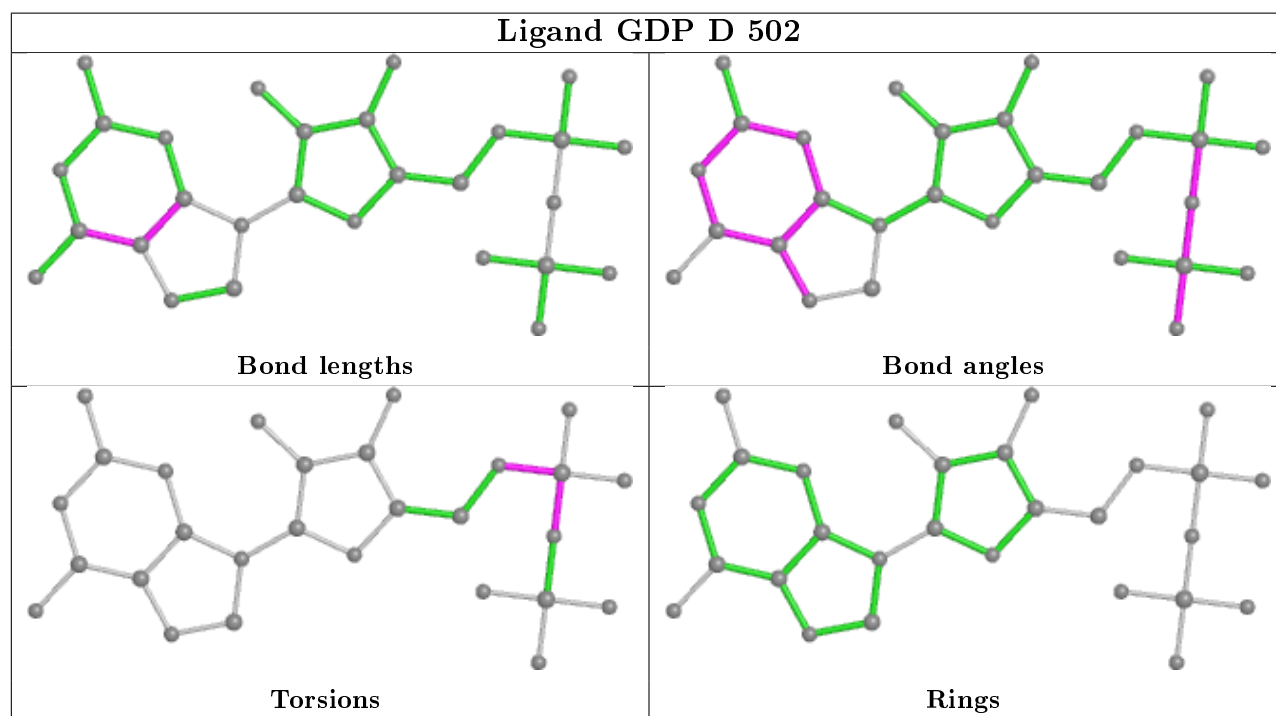
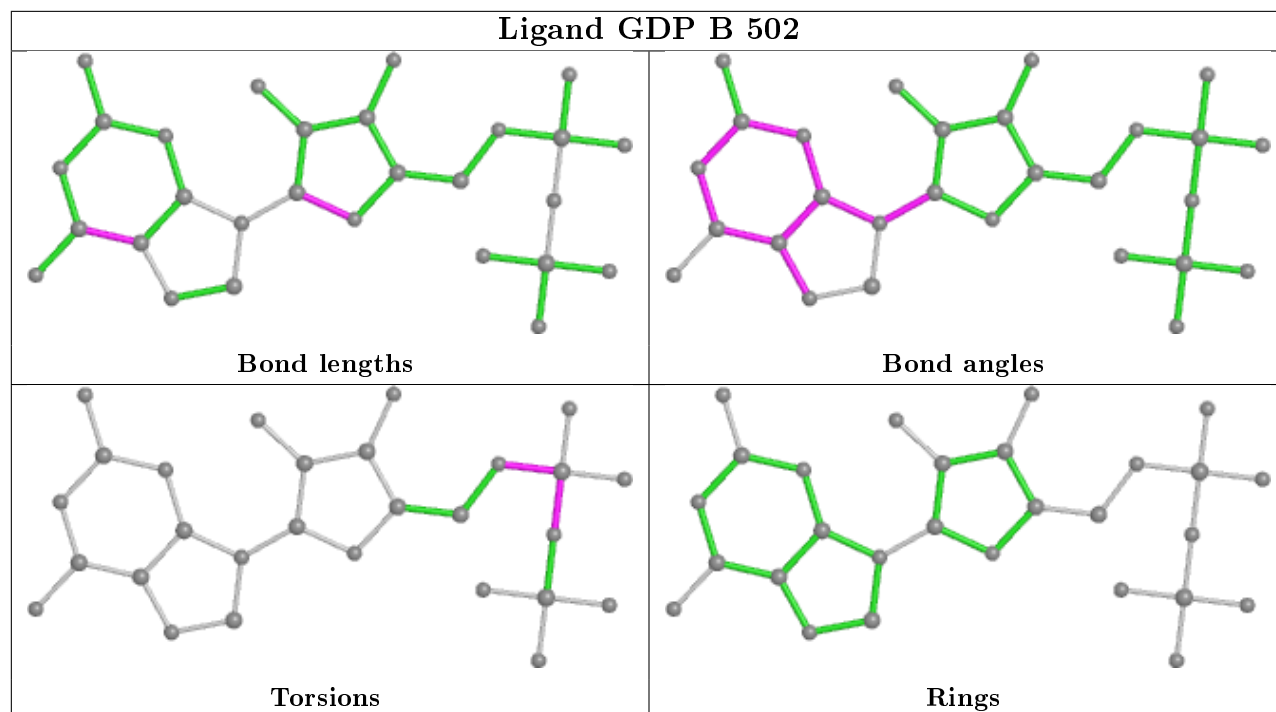
Bond angles

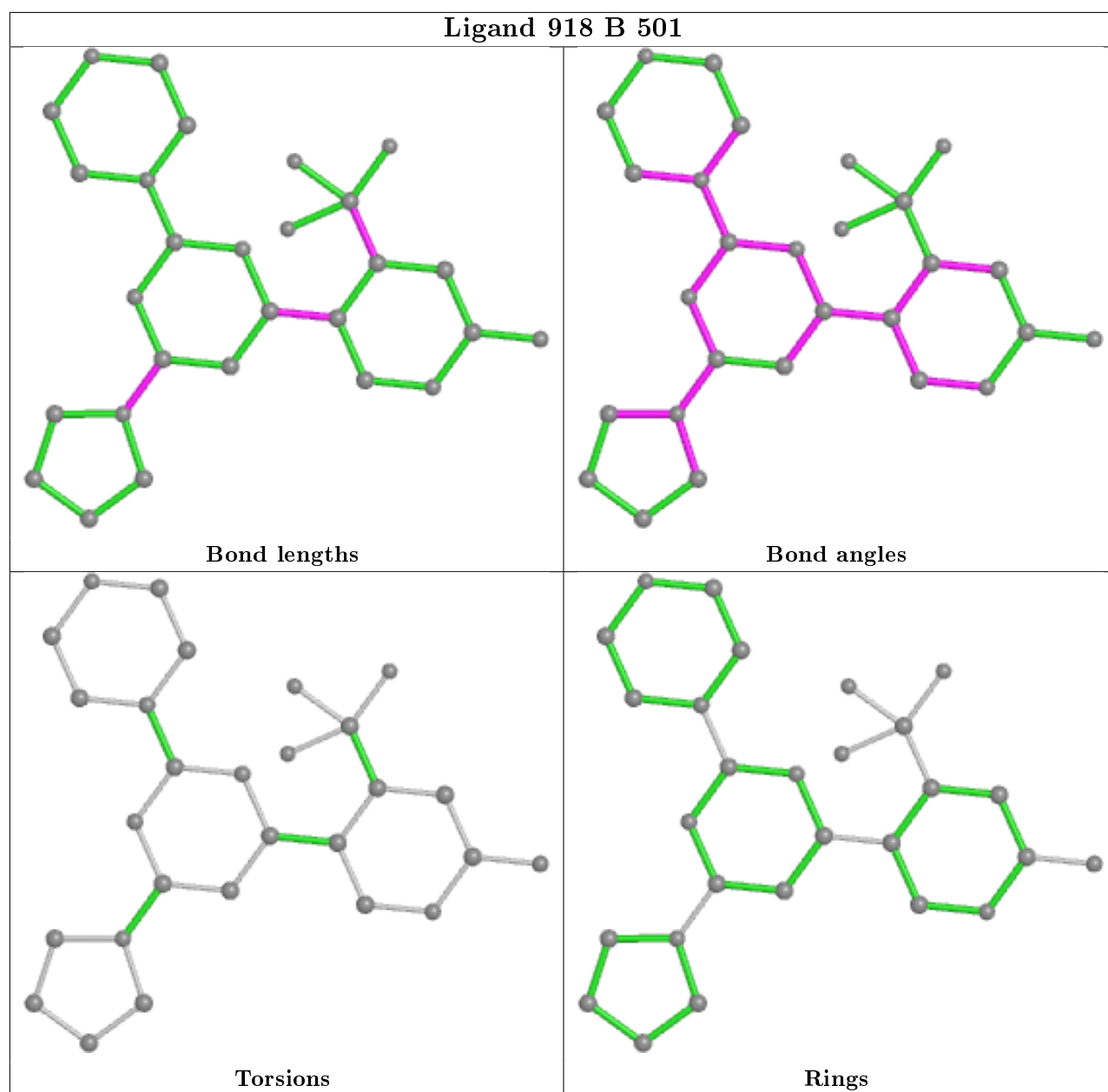


Torsions



Rings





## 5.7 Other polymers [i](#)

There are no such residues in this entry.

## 5.8 Polymer linkage issues [i](#)

There are no chain breaks in this entry.

## 6 Fit of model and data [i](#)

### 6.1 Protein, DNA and RNA chains [i](#)

In the following table, the column labelled ‘#RSRZ> 2’ contains the number (and percentage) of RSRZ outliers, followed by percent RSRZ outliers for the chain as percentile scores relative to all X-ray entries and entries of similar resolution. The OWAB column contains the minimum, median, 95<sup>th</sup> percentile and maximum values of the occupancy-weighted average B-factor per residue. The column labelled ‘Q< 0.9’ lists the number of (and percentage) of residues with an average occupancy less than 0.9.

Mol	Chain	Analysed	<RSRZ>	#RSRZ>2	OWAB(Å <sup>2</sup> )	Q<0.9
1	A	440/451 (97%)	0.37	24 (5%) 25 31	37, 56, 95, 136	0
1	C	440/451 (97%)	0.03	7 (1%) 72 77	31, 44, 77, 119	0
2	B	423/445 (95%)	0.25	19 (4%) 33 40	32, 52, 88, 132	2 (0%)
2	D	427/445 (95%)	0.47	41 (9%) 8 10	38, 65, 100, 132	4 (0%)
3	E	123/143 (86%)	0.38	14 (11%) 5 6	40, 70, 113, 131	0
4	F	331/384 (86%)	1.18	91 (27%) 0 0	47, 83, 141, 168	0
All	All	2184/2319 (94%)	0.42	196 (8%) 9 12	31, 59, 110, 168	6 (0%)

The worst 5 of 196 RSRZ outliers are listed below:

Mol	Chain	Res	Type	RSRZ
4	F	231	ALA	8.7
4	F	173	ILE	8.3
4	F	249	TYR	7.2
4	F	130	VAL	6.9
4	F	169	LEU	6.9

### 6.2 Non-standard residues in protein, DNA, RNA chains [i](#)

There are no non-standard protein/DNA/RNA residues in this entry.

### 6.3 Carbohydrates [i](#)

There are no carbohydrates in this entry.

## 6.4 Ligands ⓘ

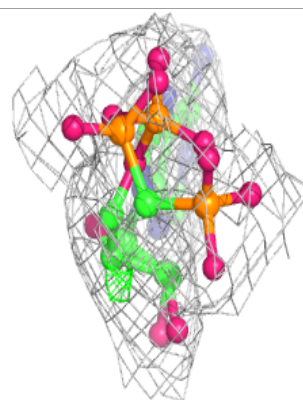
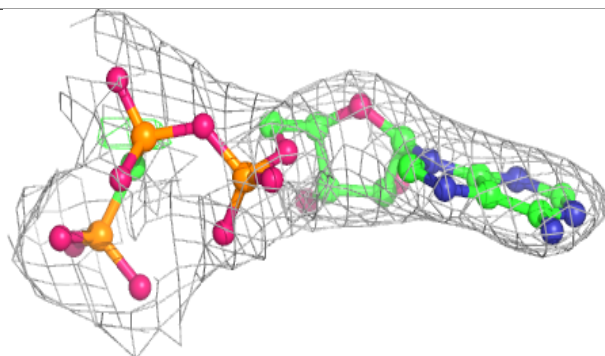
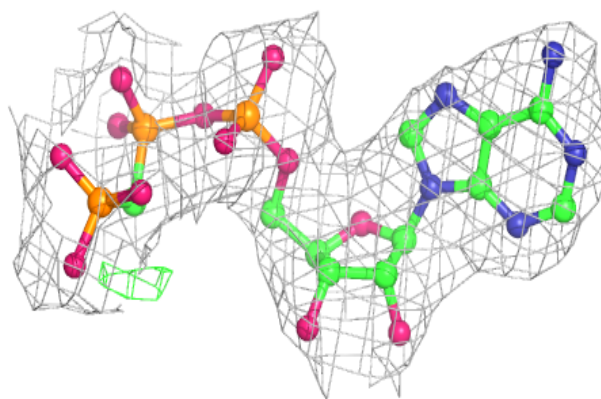
In the following table, the Atoms column lists the number of modelled atoms in the group and the number defined in the chemical component dictionary. The B-factors column lists the minimum, median, 95<sup>th</sup> percentile and maximum values of B factors of atoms in the group. The column labelled 'Q< 0.9' lists the number of atoms with occupancy less than 0.9.

Mol	Type	Chain	Res	Atoms	RSCC	RSR	B-factors(Å <sup>2</sup> )	Q<0.9
7	CA	B	504	1/1	0.82	0.09	112,112,112,112	0
6	MG	F	401	1/1	0.83	0.06	71,71,71,71	0
7	CA	A	504	1/1	0.85	0.11	114,114,114,114	0
11	MES	D	504	12/12	0.89	0.22	89,100,103,107	0
8	GOL	A	505	6/6	0.89	0.19	78,81,88,89	0
7	CA	B	505	1/1	0.90	0.24	92,92,92,92	0
12	ACP	F	402	31/31	0.91	0.12	82,96,119,130	0
9	918	D	501	28/28	0.92	0.16	44,50,57,60	0
6	MG	D	503	1/1	0.93	0.05	61,61,61,61	0
9	918	B	501	28/28	0.95	0.15	34,44,55,60	0
6	MG	A	502	1/1	0.96	0.17	38,38,38,38	0
11	MES	B	506	12/12	0.97	0.12	36,47,67,75	0
7	CA	A	503	1/1	0.97	0.04	75,75,75,75	0
10	GDP	D	502	28/28	0.97	0.10	46,56,66,72	0
6	MG	C	502	1/1	0.97	0.12	39,39,39,39	0
5	GTP	C	501	32/32	0.98	0.14	27,34,40,44	0
5	GTP	A	501	32/32	0.98	0.19	32,40,44,54	0
7	CA	C	503	1/1	0.99	0.05	59,59,59,59	0
10	GDP	B	502	28/28	0.99	0.18	31,37,43,43	0
6	MG	B	503	1/1	0.99	0.25	30,30,30,30	0

The following is a graphical depiction of the model fit to experimental electron density of all instances of the Ligand of Interest. In addition, ligands with molecular weight > 250 and outliers as shown on the geometry validation Tables will also be included. Each fit is shown from different orientation to approximate a three-dimensional view.

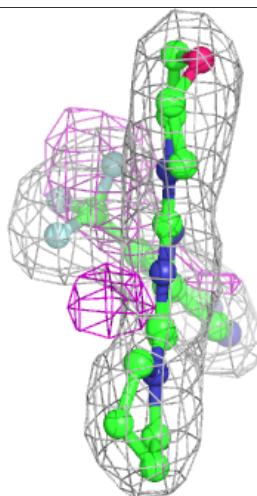
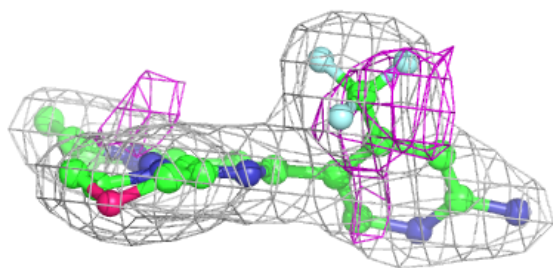
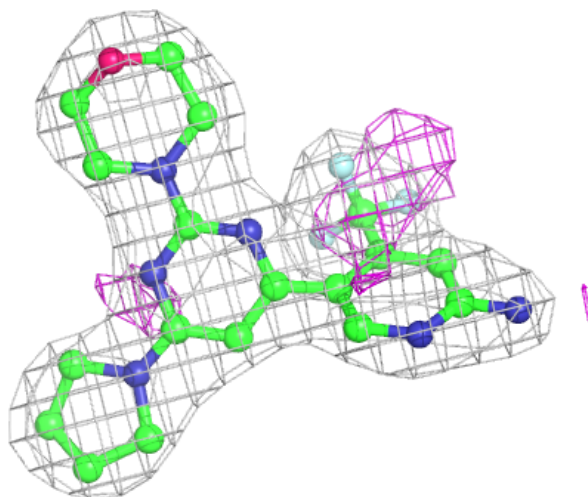
**Electron density around ACP F 402:**

$2mF_o - DF_c$  (at 0.7 rmsd) in gray  
 $mF_o - DF_c$  (at 3 rmsd) in purple (negative)  
and green (positive)



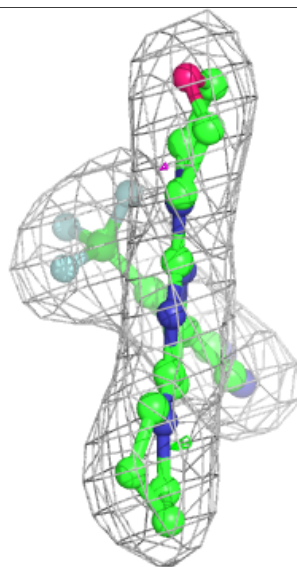
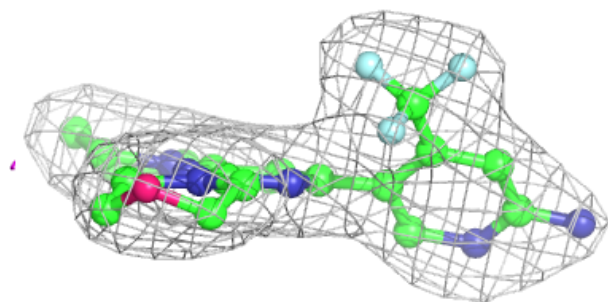
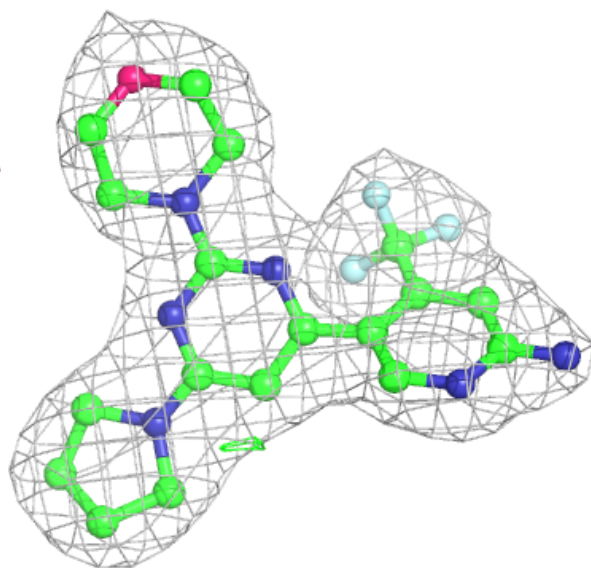
**Electron density around 918 D 501:**

$2mF_o-DF_c$  (at 0.7 rmsd) in gray  
 $mF_o-DF_c$  (at 3 rmsd) in purple (negative)  
and green (positive)



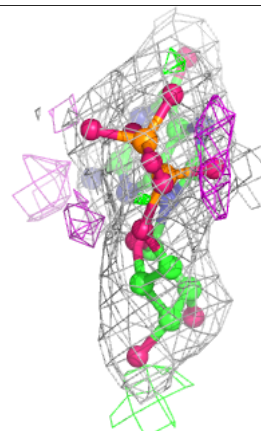
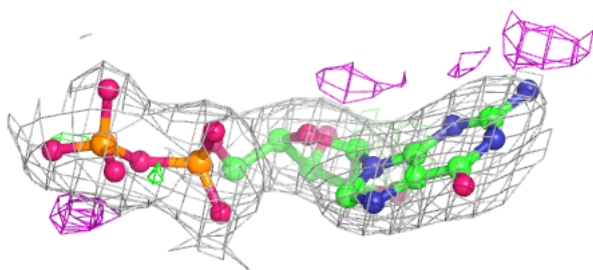
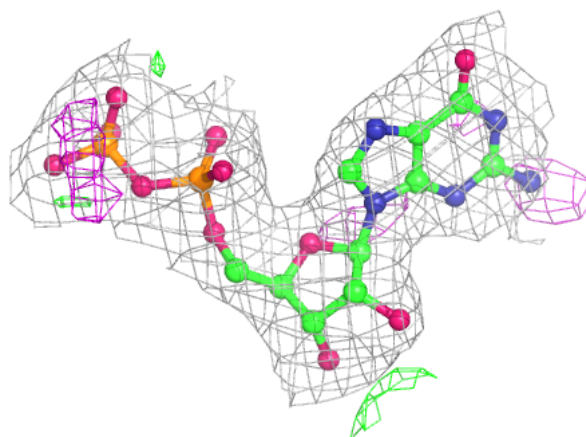
**Electron density around 918 B 501:**

$2mF_o-DF_c$  (at 0.7 rmsd) in gray  
 $mF_o-DF_c$  (at 3 rmsd) in purple (negative)  
and green (positive)

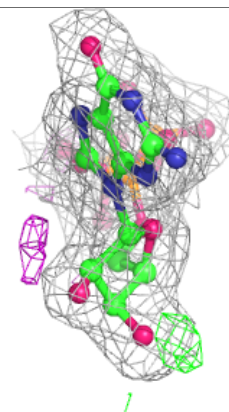
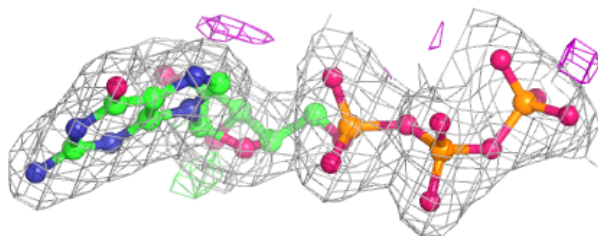
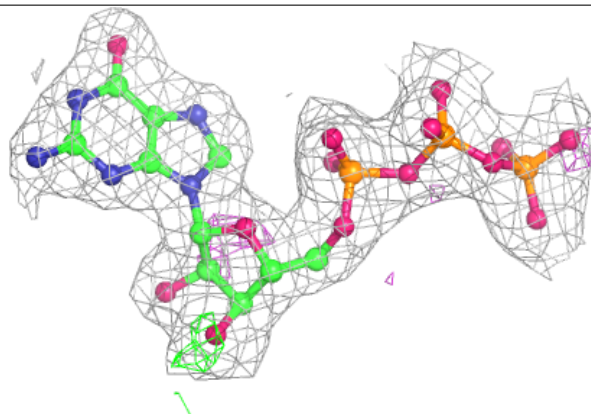


**Electron density around GDP D 502:**

$2mF_o-DF_c$  (at 0.7 rmsd) in gray  
 $mF_o-DF_c$  (at 3 rmsd) in purple (negative)  
and green (positive)

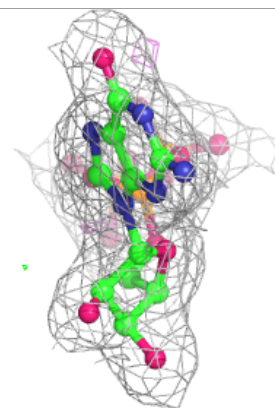
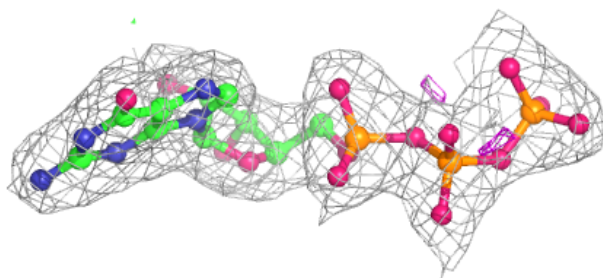
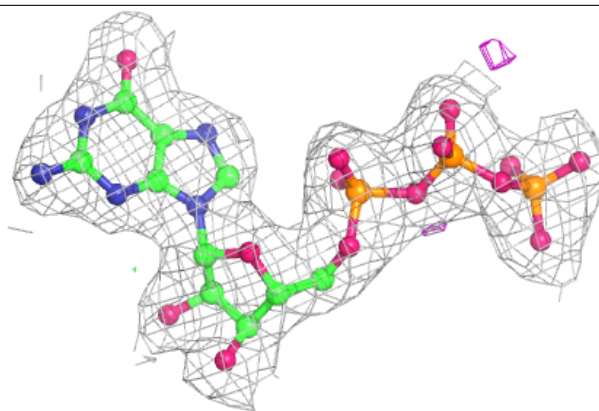
**Electron density around GTP C 501:**

$2mF_o-DF_c$  (at 0.7 rmsd) in gray  
 $mF_o-DF_c$  (at 3 rmsd) in purple (negative)  
and green (positive)

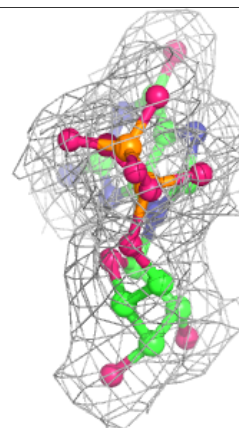
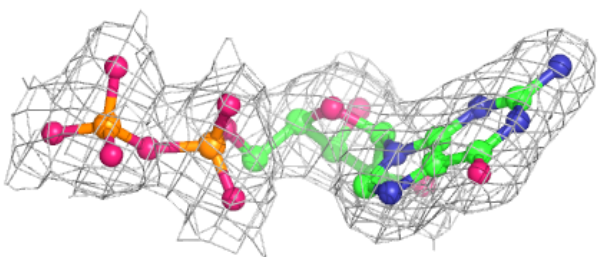
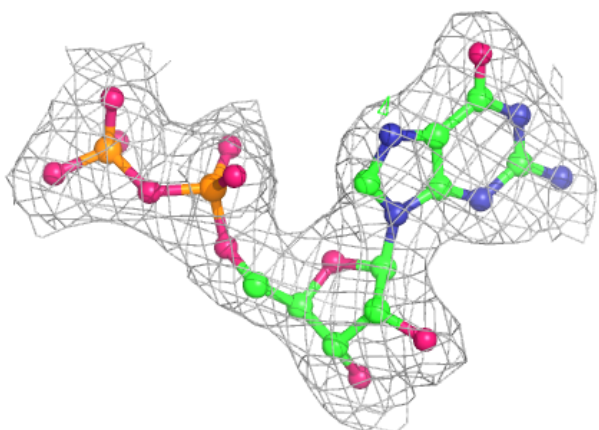


**Electron density around GTP A 501:**

$2mF_o-DF_c$  (at 0.7 rmsd) in gray  
 $mF_o-DF_c$  (at 3 rmsd) in purple (negative)  
and green (positive)

**Electron density around GDP B 502:**

$2mF_o-DF_c$  (at 0.7 rmsd) in gray  
 $mF_o-DF_c$  (at 3 rmsd) in purple (negative)  
and green (positive)



## 6.5 Other polymers [i](#)

There are no such residues in this entry.