



Full wwPDB X-ray Structure Validation Report ⓘ

Aug 6, 2020 – 08:11 AM BST

PDB ID : 1M9T
Title : Inducible Nitric Oxide Synthase with 3-Bromo-7-Nitroindazole bound
Authors : Rosenfeld, R.J.; Garcin, E.D.; Panda, K.; Andersson, G.; Aberg, A.; Wallace, A.V.; Stuehr, D.J.; Tainer, J.A.; Getzoff, E.D.
Deposited on : 2002-09-05
Resolution : 2.40 Å(reported)

This is a Full wwPDB X-ray Structure Validation Report for a publicly released PDB entry.

We welcome your comments at validation@mail.wwpdb.org

A user guide is available at

<https://www.wwpdb.org/validation/2017/XrayValidationReportHelp>

with specific help available everywhere you see the ⓘ symbol.

The following versions of software and data (see [references ⓘ](#)) were used in the production of this report:

MolProbity : 4.02b-467
Mogul : 1.8.5 (274361), CSD as541be (2020)
Xtriage (Phenix) : **NOT EXECUTED**
EDS : **NOT EXECUTED**
buster-report : 1.1.7 (2018)
Percentile statistics : 20191225.v01 (using entries in the PDB archive December 25th 2019)
Ideal geometry (proteins) : Engh & Huber (2001)
Ideal geometry (DNA, RNA) : Parkinson et al. (1996)
Validation Pipeline (wwPDB-VP) : 2.13.1

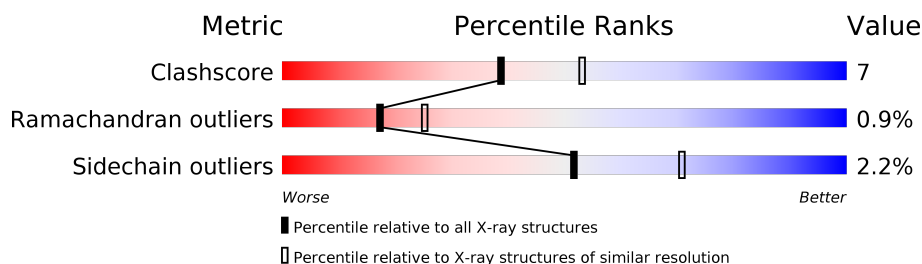
1 Overall quality at a glance

The following experimental techniques were used to determine the structure:

X-RAY DIFFRACTION

The reported resolution of this entry is 2.40 Å.

Percentile scores (ranging between 0-100) for global validation metrics of the entry are shown in the following graphic. The table shows the number of entries on which the scores are based.



Metric	Whole archive (#Entries)	Similar resolution (#Entries, resolution range(Å))
Clashscore	141614	4398 (2.40-2.40)
Ramachandran outliers	138981	4318 (2.40-2.40)
Sidechain outliers	138945	4319 (2.40-2.40)

The table below summarises the geometric issues observed across the polymeric chains and their fit to the electron density. The red, orange, yellow and green segments on the lower bar indicate the fraction of residues that contain outliers for ≥ 3 , 2, 1 and 0 types of geometric quality criteria respectively. A grey segment represents the fraction of residues that are not modelled. The numeric value for each fraction is indicated below the corresponding segment, with a dot representing fractions $\leq 5\%$.

Note EDS was not executed.

Mol	Chain	Length	Quality of chain
1	A	434	
1	B	434	

The following table lists non-polymeric compounds, carbohydrate monomers and non-standard residues in protein, DNA, RNA chains that are outliers for geometric or electron-density-fit criteria:

Mol	Type	Chain	Res	Chirality	Geometry	Clashes	Electron density
3	H4B	A	902	X	-	-	-
3	H4B	B	903	X	-	-	-

2 Entry composition [i](#)

There are 7 unique types of molecules in this entry. The entry contains 7143 atoms, of which 0 are hydrogens and 0 are deuteriums.

In the tables below, the ZeroOcc column contains the number of atoms modelled with zero occupancy, the AltConf column contains the number of residues with at least one atom in alternate conformation and the Trace column contains the number of residues modelled with at most 2 atoms.

- Molecule 1 is a protein called inducible nitric oxide synthase.

Mol	Chain	Residues	Atoms					ZeroOcc	AltConf	Trace
1	A	413	Total	C	N	O	S	0	0	0
			3363	2157	580	606	20			
1	B	412	Total	C	N	O	S	0	0	0
			3353	2152	578	604	19			

- Molecule 2 is PROTOPORPHYRIN IX CONTAINING FE (three-letter code: HEM) (formula: $C_{34}H_{32}FeN_4O_4$).



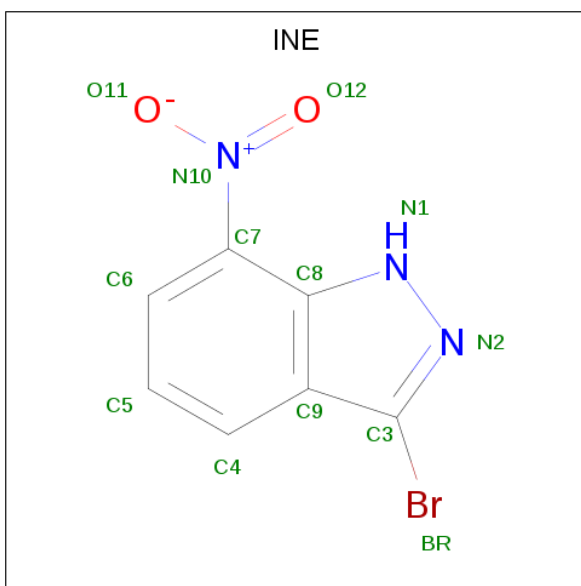
Mol	Chain	Residues	Atoms					ZeroOcc	AltConf
2	A	1	Total	C	Fe	N	O	0	0
			43	34	1	4	4		
2	B	1	Total	C	Fe	N	O	0	0
			43	34	1	4	4		

- Molecule 3 is 5,6,7,8-TETRAHYDROBIOPTERIN (three-letter code: H4B) (formula: $C_9H_{15}N_5O_3$).



Mol	Chain	Residues	Atoms				ZeroOcc	AltConf
3	A	1	Total	C	N	O	0	0
			17	9	5	3		
3	B	1	Total	C	N	O	0	0
			17	9	5	3		

- Molecule 4 is 3-BROMO-7-NITROINDAZOLE (three-letter code: INE) (formula: $C_7H_4BrN_3O_2$).



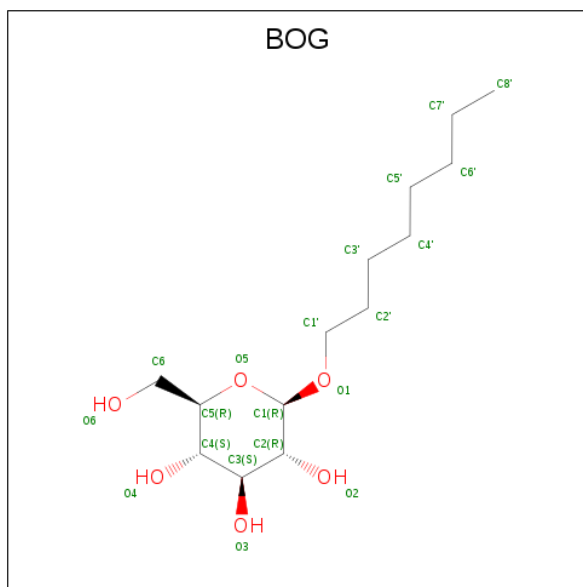
Mol	Chain	Residues	Atoms				ZeroOcc	AltConf
4	A	1	Total	Br	C	N	O	0
			13	1	7	3	2	
4	B	1	Total	Br	C	N	O	0
			13	1	7	3	2	

- Molecule 5 is 1,2-ETHANEDIOL (three-letter code: EDO) (formula: $C_2H_6O_2$).



Mol	Chain	Residues	Atoms			ZeroOcc	AltConf
5	A	1	Total	C	O	0	0
			4	2	2		
5	A	1	Total	C	O	0	0
			4	2	2		

- Molecule 6 is octyl beta-D-glucopyranoside (three-letter code: BOG) (formula: $C_{14}H_{28}O_6$).



Mol	Chain	Residues	Atoms			ZeroOcc	AltConf
6	B	1	Total	C	O	0	0
			20	14	6		

- Molecule 7 is water.

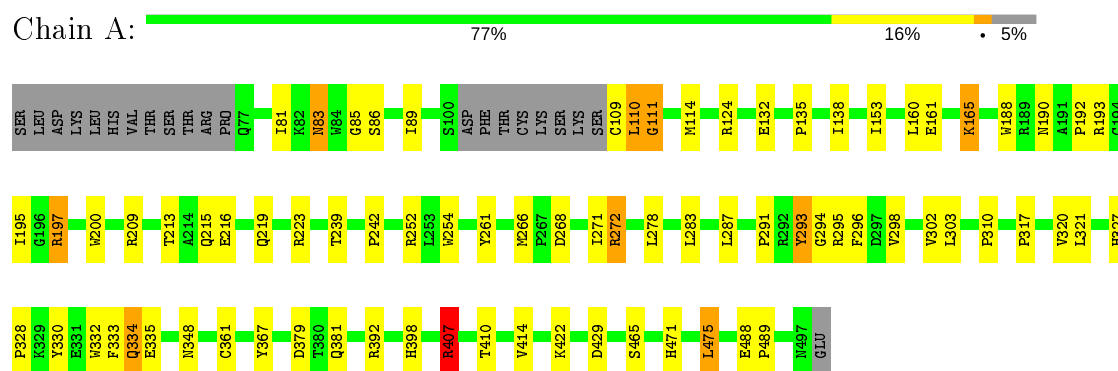
Mol	Chain	Residues	Atoms		ZeroOcc	AltConf
7	A	132	Total 132	O 132	0	0
7	B	121	Total 121	O 121	0	0

3 Residue-property plots [i](#)

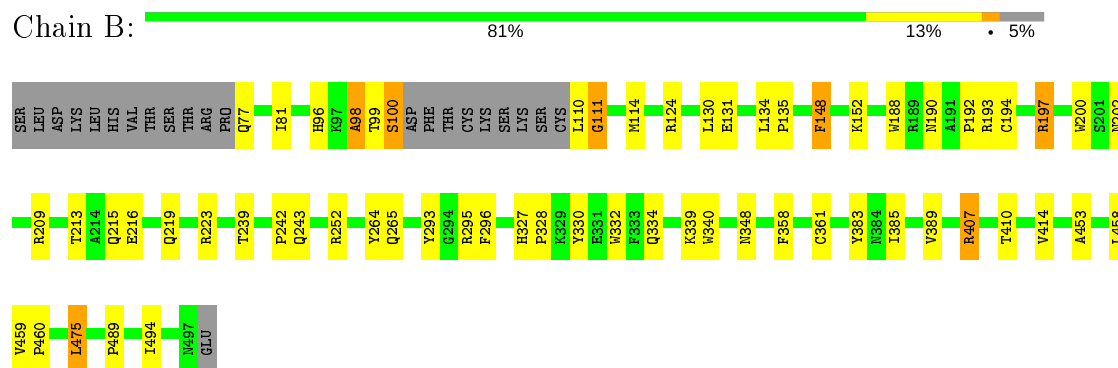
These plots are drawn for all protein, RNA, DNA and oligosaccharide chains in the entry. The first graphic for a chain summarises the proportions of the various outlier classes displayed in the second graphic. The second graphic shows the sequence view annotated by issues in geometry. Residues are color-coded according to the number of geometric quality criteria for which they contain at least one outlier: green = 0, yellow = 1, orange = 2 and red = 3 or more. Stretches of 2 or more consecutive residues without any outlier are shown as a green connector. Residues present in the sample, but not in the model, are shown in grey.

Note EDS was not executed.

- Molecule 1: inducible nitric oxide synthase



- Molecule 1: inducible nitric oxide synthase



4 Data and refinement statistics

Xtriage (Phenix) and EDS were not executed - this section is therefore incomplete.

Property	Value	Source
Space group	P 61 2 2	Depositor
Cell constants a, b, c, α , β , γ	214.42Å 214.42Å 113.27Å 90.00° 90.00° 120.00°	Depositor
Resolution (Å)	19.94 – 2.40	Depositor
% Data completeness (in resolution range)	98.9 (19.94-2.40)	Depositor
R_{merge}	0.07	Depositor
R_{sym}	0.07	Depositor
Refinement program	CNS	Depositor
R, R_{free}	0.250 , 0.284	Depositor
Estimated twinning fraction	No twinning to report.	Xtriage
Total number of atoms	7143	wwPDB-VP
Average B, all atoms (Å ²)	55.0	wwPDB-VP

5 Model quality [i](#)

5.1 Standard geometry [i](#)

Bond lengths and bond angles in the following residue types are not validated in this section: INE, BOG, H4B, HEM, EDO

The Z score for a bond length (or angle) is the number of standard deviations the observed value is removed from the expected value. A bond length (or angle) with $|Z| > 5$ is considered an outlier worth inspection. RMSZ is the root-mean-square of all Z scores of the bond lengths (or angles).

Mol	Chain	Bond lengths		Bond angles	
		RMSZ	# $ Z > 5$	RMSZ	# $ Z > 5$
1	A	0.40	0/3461	0.67	5/4706 (0.1%)
1	B	0.39	0/3451	0.67	6/4693 (0.1%)
All	All	0.40	0/6912	0.67	11/9399 (0.1%)

There are no bond length outliers.

All (11) bond angle outliers are listed below:

Mol	Chain	Res	Type	Atoms	Z	Observed(°)	Ideal(°)
1	B	197	ARG	NE-CZ-NH1	-9.67	115.46	120.30
1	B	197	ARG	NE-CZ-NH2	9.51	125.05	120.30
1	A	197	ARG	NE-CZ-NH2	-7.08	116.76	120.30
1	A	407	ARG	NE-CZ-NH2	-6.67	116.96	120.30
1	A	407	ARG	NE-CZ-NH1	6.39	123.50	120.30
1	B	407	ARG	NE-CZ-NH1	-6.10	117.25	120.30
1	B	124	ARG	NE-CZ-NH2	6.05	123.33	120.30
1	B	124	ARG	NE-CZ-NH1	-5.96	117.32	120.30
1	A	124	ARG	NE-CZ-NH1	5.86	123.23	120.30
1	A	124	ARG	NE-CZ-NH2	-5.50	117.55	120.30
1	B	407	ARG	NE-CZ-NH2	5.36	122.98	120.30

There are no chirality outliers.

There are no planarity outliers.

5.2 Too-close contacts [i](#)

In the following table, the Non-H and H(model) columns list the number of non-hydrogen atoms and hydrogen atoms in the chain respectively. The H(added) column lists the number of hydrogen atoms added and optimized by MolProbity. The Clashes column lists the number of clashes within the asymmetric unit, whereas Symm-Clashes lists symmetry related clashes.

Mol	Chain	Non-H	H(model)	H(added)	Clashes	Symm-Clashes
1	A	3363	0	3256	59	0
1	B	3353	0	3245	41	0
2	A	43	0	30	1	0
2	B	43	0	30	0	0
3	A	17	0	14	0	0
3	B	17	0	14	0	0
4	A	13	0	4	1	0
4	B	13	0	4	0	0
5	A	8	0	12	1	0
6	B	20	0	28	0	0
7	A	132	0	0	17	0
7	B	121	0	0	7	0
All	All	7143	0	6637	101	0

The all-atom clashscore is defined as the number of clashes found per 1000 atoms (including hydrogen atoms). The all-atom clashscore for this structure is 7.

All (101) close contacts within the same asymmetric unit are listed below, sorted by their clash magnitude.

Atom-1	Atom-2	Interatomic distance (Å)	Clash overlap (Å)
1:B:202:ASN:HB3	7:B:1223:HOH:O	1.87	0.74
1:A:407:ARG:HD2	7:A:1231:HOH:O	1.87	0.72
1:B:81:ILE:HD11	1:B:475:LEU:HD13	1.72	0.70
1:A:488:GLU:HG3	7:A:1236:HOH:O	1.94	0.68
1:A:83:ASN:ND2	1:A:86:SER:H	1.92	0.67
1:B:77:GLN:HA	7:B:1172:HOH:O	1.94	0.66
1:B:407:ARG:HA	7:B:1134:HOH:O	1.95	0.65
1:A:294:GLY:HA3	7:A:1179:HOH:O	1.94	0.65
1:B:188:TRP:CE3	1:B:200:TRP:HA	2.32	0.64
1:A:161:GLU:HG2	1:A:165:LYS:NZ	2.13	0.63
1:A:407:ARG:HG2	7:A:1218:HOH:O	1.98	0.62
1:A:161:GLU:CG	1:A:165:LYS:HZ1	2.12	0.62
1:A:209:ARG:O	1:A:242:PRO:HG3	2.00	0.62
1:A:188:TRP:CE3	1:A:200:TRP:HA	2.37	0.60
1:B:209:ARG:O	1:B:242:PRO:HG3	2.02	0.60
1:B:114:MET:HE1	7:B:1076:HOH:O	2.01	0.59
1:A:422:LYS:HD3	7:A:1257:HOH:O	2.02	0.59
1:A:83:ASN:ND2	1:A:85:GLY:H	2.01	0.59
1:B:385:ILE:O	1:B:389:VAL:HG23	2.03	0.58
1:A:348:ASN:HB2	7:A:1042:HOH:O	2.03	0.58
1:B:194:CYS:HB3	1:B:197:ARG:HD3	1.86	0.58
1:B:110:LEU:N	1:B:110:LEU:HD12	2.19	0.58

Continued on next page...

Continued from previous page...

Atom-1	Atom-2	Interatomic distance (Å)	Clash overlap (Å)
1:A:327:HIS:ND1	1:A:328:PRO:HD2	2.20	0.56
1:A:81:ILE:HD11	1:A:475:LEU:HD13	1.87	0.56
1:B:148:PHE:N	1:B:148:PHE:HD2	2.04	0.56
1:B:77:GLN:O	1:B:96:HIS:HE1	1.89	0.56
2:A:901:HEM:HBC2	2:A:901:HEM:HMC2	1.87	0.55
1:A:215:GLN:HE21	1:A:219:GLN:HE21	1.55	0.55
1:B:194:CYS:O	1:B:197:ARG:HG3	2.07	0.54
1:A:161:GLU:CG	1:A:165:LYS:NZ	2.70	0.54
1:B:215:GLN:HE21	1:B:219:GLN:HE21	1.54	0.54
1:B:148:PHE:N	1:B:148:PHE:CD2	2.75	0.54
1:A:317:PRO:HD2	7:A:1104:HOH:O	2.07	0.54
1:A:465:SER:O	1:A:471:HIS:HE1	1.90	0.53
1:A:410:THR:O	1:A:414:VAL:HG23	2.08	0.53
1:B:327:HIS:ND1	1:B:328:PRO:HD2	2.24	0.53
1:A:252:ARG:NH2	1:A:489:PRO:HD3	2.23	0.53
1:B:410:THR:O	1:B:414:VAL:HG23	2.09	0.52
1:A:83:ASN:HD22	1:A:86:SER:H	1.59	0.51
1:A:321:LEU:HD12	7:A:1271:HOH:O	2.10	0.50
1:A:89:ILE:HG21	5:A:3000:EDO:H12	1.92	0.50
1:B:98:ALA:C	1:B:100:SER:H	2.15	0.49
1:B:348:ASN:HB2	7:B:1112:HOH:O	2.12	0.49
1:A:333:PHE:HB3	7:A:1227:HOH:O	2.12	0.49
1:A:161:GLU:HG2	1:A:165:LYS:HZ3	1.77	0.49
1:A:190:ASN:O	1:A:192:PRO:HD3	2.14	0.48
1:A:398:HIS:HB2	7:A:1034:HOH:O	2.14	0.47
1:A:266:MET:CG	1:A:272:ARG:HB2	2.44	0.47
1:B:81:ILE:HD11	1:B:475:LEU:CD1	2.44	0.47
1:A:407:ARG:HA	7:A:1218:HOH:O	2.15	0.46
1:A:271:ILE:HD12	1:A:278:LEU:HD11	1.97	0.46
1:B:213:THR:OG1	1:B:216:GLU:HG3	2.15	0.46
1:A:261:TYR:CE2	1:A:296:PHE:HD1	2.34	0.46
1:A:332:TRP:CH2	1:A:392:ARG:HB2	2.51	0.46
1:A:367:TYR:HA	4:A:906:INE:O12	2.16	0.46
1:B:453:ALA:HB1	1:B:458:LEU:CD1	2.46	0.46
1:A:295:ARG:HG2	1:A:295:ARG:H	1.58	0.45
1:A:138:ILE:HD12	1:A:160:LEU:HD22	1.97	0.45
1:B:188:TRP:CZ3	1:B:200:TRP:HA	2.51	0.45
1:A:188:TRP:O	1:A:197:ARG:HD3	2.17	0.45
1:A:283:LEU:O	1:A:287:LEU:HG	2.17	0.45
1:A:254:TRP:HB2	1:A:302:VAL:HB	1.99	0.45
1:A:379:ASP:HB3	1:A:381:GLN:OE1	2.17	0.45

Continued on next page...

Continued from previous page...

Atom-1	Atom-2	Interatomic distance (Å)	Clash overlap (Å)
1:A:291:PRO:C	1:A:293:TYR:H	2.19	0.45
1:A:298:VAL:HG21	1:A:320:VAL:HG11	1.99	0.45
1:B:239:THR:O	1:B:361:CYS:HA	2.16	0.44
1:A:195:ILE:N	7:A:1210:HOH:O	2.48	0.44
1:B:190:ASN:O	1:B:192:PRO:HD3	2.18	0.44
1:B:264:TYR:CE1	1:B:293:TYR:HA	2.52	0.44
1:A:334:GLN:OE1	1:A:335:GLU:HG3	2.18	0.44
1:A:407:ARG:CG	7:A:1218:HOH:O	2.62	0.43
1:B:148:PHE:CE1	1:B:152:LYS:HE2	2.52	0.43
1:A:188:TRP:CZ3	1:A:200:TRP:HA	2.53	0.43
1:A:303:LEU:O	1:A:310:PRO:HA	2.18	0.43
1:B:148:PHE:HE1	1:B:152:LYS:HE2	1.84	0.43
1:A:132:GLU:O	1:A:135:PRO:HD2	2.18	0.43
1:A:295:ARG:HG2	7:A:1179:HOH:O	2.19	0.43
1:A:213:THR:OG1	1:A:216:GLU:HG3	2.19	0.42
1:A:330:TYR:HB3	1:A:332:TRP:CE2	2.54	0.42
1:B:134:LEU:HB3	1:B:135:PRO:HD3	2.02	0.42
1:B:243:GLN:HB3	1:B:358:PHE:CE2	2.55	0.42
1:B:459:VAL:HA	1:B:460:PRO:HD3	1.93	0.42
1:B:453:ALA:HB1	1:B:458:LEU:HD12	2.01	0.42
1:A:239:THR:O	1:A:361:CYS:HA	2.18	0.42
1:A:327:HIS:ND1	1:A:328:PRO:CD	2.82	0.42
1:A:429:ASP:HA	7:A:1122:HOH:O	2.19	0.42
1:B:81:ILE:HA	1:B:81:ILE:HD13	1.91	0.42
1:A:110:LEU:HD12	1:A:110:LEU:N	2.34	0.42
1:B:340:TRP:HZ3	1:B:383:TYR:CE1	2.38	0.42
1:A:114:MET:HE1	7:A:1091:HOH:O	2.20	0.42
1:B:296:PHE:CD2	1:B:339:LYS:HG2	2.55	0.41
1:B:188:TRP:O	1:B:197:ARG:HD2	2.20	0.41
1:B:111:GLY:HA2	7:B:1272:HOH:O	2.20	0.41
1:A:109:CYS:O	1:A:111:GLY:N	2.54	0.41
1:B:330:TYR:HB3	1:B:332:TRP:CE2	2.56	0.41
1:A:193:ARG:HD2	7:A:1041:HOH:O	2.19	0.41
1:A:153:ILE:HG13	1:A:153:ILE:H	1.69	0.41
1:A:488:GLU:HA	1:A:489:PRO:HD2	1.90	0.40
1:B:494:ILE:HG12	1:B:494:ILE:H	1.66	0.40
1:B:193:ARG:HD2	7:B:1110:HOH:O	2.20	0.40
1:B:252:ARG:NH2	1:B:489:PRO:HD3	2.36	0.40

There are no symmetry-related clashes.

5.3 Torsion angles [i](#)

5.3.1 Protein backbone [i](#)

In the following table, the Percentiles column shows the percent Ramachandran outliers of the chain as a percentile score with respect to all X-ray entries followed by that with respect to entries of similar resolution.

The Analysed column shows the number of residues for which the backbone conformation was analysed, and the total number of residues.

Mol	Chain	Analysed	Favoured	Allowed	Outliers	Percentiles	
1	A	409/434 (94%)	378 (92%)	27 (7%)	4 (1%)	15	23
1	B	408/434 (94%)	374 (92%)	31 (8%)	3 (1%)	22	32
All	All	817/868 (94%)	752 (92%)	58 (7%)	7 (1%)	17	25

All (7) Ramachandran outliers are listed below:

Mol	Chain	Res	Type
1	A	110	LEU
1	A	111	GLY
1	A	293	TYR
1	B	98	ALA
1	B	111	GLY
1	A	268	ASP
1	B	99	THR

5.3.2 Protein sidechains [i](#)

In the following table, the Percentiles column shows the percent sidechain outliers of the chain as a percentile score with respect to all X-ray entries followed by that with respect to entries of similar resolution.

The Analysed column shows the number of residues for which the sidechain conformation was analysed, and the total number of residues.

Mol	Chain	Analysed	Rotameric	Outliers	Percentiles	
1	A	359/382 (94%)	352 (98%)	7 (2%)	57	75
1	B	357/382 (94%)	348 (98%)	9 (2%)	47	67
All	All	716/764 (94%)	700 (98%)	16 (2%)	52	71

All (16) residues with a non-rotameric sidechain are listed below:

Mol	Chain	Res	Type
1	A	83	ASN
1	A	165	LYS
1	A	223	ARG
1	A	272	ARG
1	A	334	GLN
1	A	407	ARG
1	A	475	LEU
1	B	100	SER
1	B	130	LEU
1	B	131	GLU
1	B	148	PHE
1	B	223	ARG
1	B	265	GLN
1	B	295	ARG
1	B	334	GLN
1	B	475	LEU

Some sidechains can be flipped to improve hydrogen bonding and reduce clashes. All (10) such sidechains are listed below:

Mol	Chain	Res	Type
1	A	83	ASN
1	A	143	GLN
1	A	215	GLN
1	A	265	GLN
1	A	421	GLN
1	A	442	GLN
1	A	471	HIS
1	B	96	HIS
1	B	215	GLN
1	B	421	GLN

5.3.3 RNA ⓘ

There are no RNA molecules in this entry.

5.4 Non-standard residues in protein, DNA, RNA chains ⓘ

There are no non-standard protein/DNA/RNA residues in this entry.

5.5 Carbohydrates [i](#)

There are no monosaccharides in this entry.

5.6 Ligand geometry [i](#)

9 ligands are modelled in this entry.

In the following table, the Counts columns list the number of bonds (or angles) for which Mogul statistics could be retrieved, the number of bonds (or angles) that are observed in the model and the number of bonds (or angles) that are defined in the Chemical Component Dictionary. The Link column lists molecule types, if any, to which the group is linked. The Z score for a bond length (or angle) is the number of standard deviations the observed value is removed from the expected value. A bond length (or angle) with $|Z| > 2$ is considered an outlier worth inspection. RMSZ is the root-mean-square of all Z scores of the bond lengths (or angles).

Mol	Type	Chain	Res	Link	Bond lengths			Bond angles		
					Counts	RMSZ	# $ Z > 2$	Counts	RMSZ	# $ Z > 2$
5	EDO	A	3001	-	3,3,3	0.46	0	2,2,2	1.06	0
4	INE	B	907	-	12,14,14	4.00	3 (25%)	7,20,20	2.56	2 (28%)
5	EDO	A	3000	-	3,3,3	0.50	0	2,2,2	0.65	0
2	HEM	A	901	1	27,50,50	1.48	3 (11%)	17,82,82	1.41	2 (11%)
3	H4B	B	903	-	16,18,18	3.57	4 (25%)	11,26,26	2.12	5 (45%)
3	H4B	A	902	-	16,18,18	3.51	4 (25%)	11,26,26	2.09	5 (45%)
6	BOG	B	3100	-	20,20,20	0.48	0	25,25,25	1.26	4 (16%)
2	HEM	B	901	1	27,50,50	1.60	6 (22%)	17,82,82	1.68	4 (23%)
4	INE	A	906	-	12,14,14	3.74	3 (25%)	7,20,20	2.50	2 (28%)

In the following table, the Chirals column lists the number of chiral outliers, the number of chiral centers analysed, the number of these observed in the model and the number defined in the Chemical Component Dictionary. Similar counts are reported in the Torsion and Rings columns. '-' means no outliers of that kind were identified.

Mol	Type	Chain	Res	Link	Chirals	Torsions	Rings
5	EDO	A	3001	-	-	0/1/1/1	-
4	INE	B	907	-	-	0/2/4/4	0/2/2/2
5	EDO	A	3000	-	-	0/1/1/1	-
2	HEM	A	901	1	-	0/6/54/54	-
3	H4B	B	903	-	1/1/3/5	2/8/17/17	0/2/2/2
3	H4B	A	902	-	1/1/3/5	2/8/17/17	0/2/2/2
6	BOG	B	3100	-	-	2/11/31/31	0/1/1/1
2	HEM	B	901	1	-	0/6/54/54	-

Continued on next page...

Continued from previous page...

Mol	Type	Chain	Res	Link	Chirals	Torsions	Rings
4	INE	A	906	-	-	0/2/4/4	0/2/2/2

All (23) bond length outliers are listed below:

Mol	Chain	Res	Type	Atoms	Z	Observed(Å)	Ideal(Å)
3	B	903	H4B	C7-C6	-12.04	1.40	1.52
3	A	902	H4B	C7-C6	-11.78	1.40	1.52
4	B	907	INE	BR-C3	-10.43	1.74	1.90
4	A	906	INE	BR-C3	-9.37	1.75	1.90
4	B	907	INE	C5-C4	6.74	1.52	1.36
4	A	906	INE	C5-C4	6.63	1.51	1.36
3	A	902	H4B	C6-N5	-6.33	1.33	1.45
3	B	903	H4B	C6-N5	-6.23	1.33	1.45
4	B	907	INE	C4-C9	5.21	1.52	1.42
4	A	906	INE	C4-C9	4.99	1.52	1.42
2	A	901	HEM	C3B-CAB	-3.91	1.40	1.47
3	B	903	H4B	C7-N8	-3.68	1.38	1.44
2	B	901	HEM	C3B-CAB	-3.63	1.40	1.47
2	B	901	HEM	C3C-CAC	-3.48	1.40	1.47
3	A	902	H4B	C7-N8	-3.38	1.39	1.44
2	A	901	HEM	C3C-CAC	-3.21	1.41	1.47
2	B	901	HEM	C3B-C2B	-2.76	1.36	1.40
3	A	902	H4B	C4A-N5	-2.29	1.33	1.38
2	A	901	HEM	C3C-C2C	-2.25	1.37	1.40
2	B	901	HEM	C1C-C2C	2.22	1.47	1.42
3	B	903	H4B	C4A-N5	-2.19	1.33	1.38
2	B	901	HEM	C3C-C2C	-2.18	1.37	1.40
2	B	901	HEM	CBC-CAC	2.04	1.42	1.29

All (24) bond angle outliers are listed below:

Mol	Chain	Res	Type	Atoms	Z	Observed(°)	Ideal(°)
4	B	907	INE	C5-C4-C9	-5.88	112.73	120.89
4	A	906	INE	C5-C4-C9	-5.79	112.86	120.89
2	A	901	HEM	CBA-CAA-C2A	-3.95	105.19	112.49
2	B	901	HEM	C1D-C2D-C3D	-3.59	104.50	107.00
6	B	3100	BOG	O1-C1'-C2'	-3.53	97.18	109.56
2	B	901	HEM	CBA-CAA-C2A	-3.27	106.45	112.49
3	B	903	H4B	C4-C4A-N5	3.25	121.85	119.12
3	A	902	H4B	C4-N3-C2	3.24	121.08	115.93
3	B	903	H4B	C4-C4A-C8A	3.10	117.33	114.57
3	A	902	H4B	C4-C4A-C8A	3.08	117.30	114.57

Continued on next page...

Continued from previous page...

Mol	Chain	Res	Type	Atoms	Z	Observed(°)	Ideal(°)
3	B	903	H4B	C4-N3-C2	3.05	120.77	115.93
2	A	901	HEM	CMC-C2C-C3C	2.98	130.25	124.68
3	A	902	H4B	C4-C4A-N5	2.72	121.40	119.12
4	B	907	INE	O12-N10-C7	-2.67	114.46	119.03
3	B	903	H4B	C2-N1-C8A	2.63	120.44	114.54
3	A	902	H4B	C2-N1-C8A	2.62	120.40	114.54
4	A	906	INE	O12-N10-C7	-2.59	114.59	119.03
3	A	902	H4B	N3-C2-N1	-2.50	121.50	125.42
3	B	903	H4B	N3-C2-N1	-2.38	121.69	125.42
6	B	3100	BOG	C1'-O1-C1	2.28	117.62	113.84
6	B	3100	BOG	C6'-C5'-C4'	-2.26	102.95	114.42
2	B	901	HEM	CMB-C2B-C3B	2.18	128.76	124.68
2	B	901	HEM	CMC-C2C-C3C	2.17	128.74	124.68
6	B	3100	BOG	C4'-C3'-C2'	-2.09	103.84	114.42

All (2) chirality outliers are listed below:

Mol	Chain	Res	Type	Atom
3	B	903	H4B	C6
3	A	902	H4B	C6

All (6) torsion outliers are listed below:

Mol	Chain	Res	Type	Atoms
3	B	903	H4B	C7-C6-C9-O9
3	B	903	H4B	C7-C6-C9-C10
3	A	902	H4B	C7-C6-C9-O9
3	A	902	H4B	C7-C6-C9-C10
6	B	3100	BOG	O1-C1'-C2'-C3'
6	B	3100	BOG	C3'-C4'-C5'-C6'

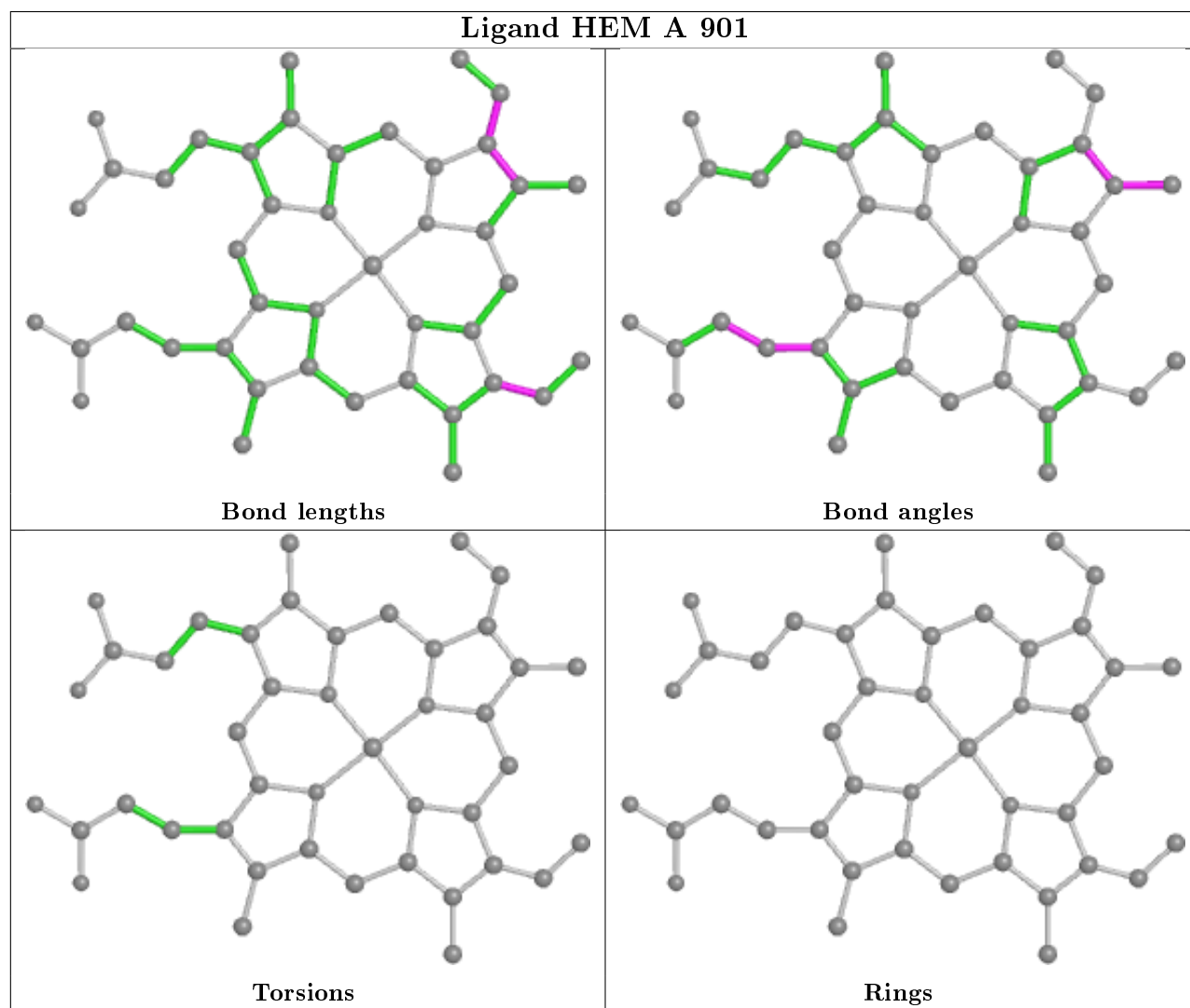
There are no ring outliers.

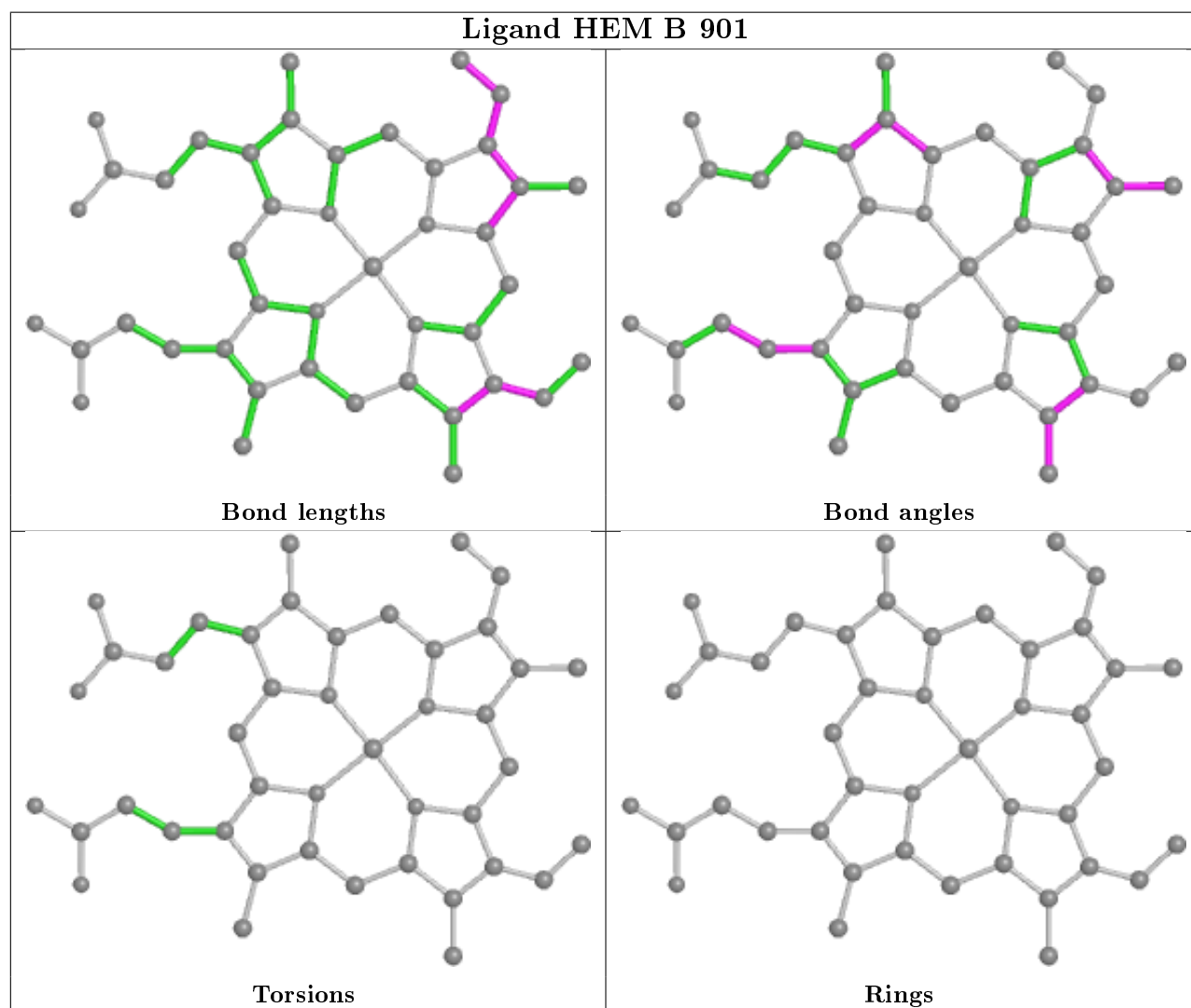
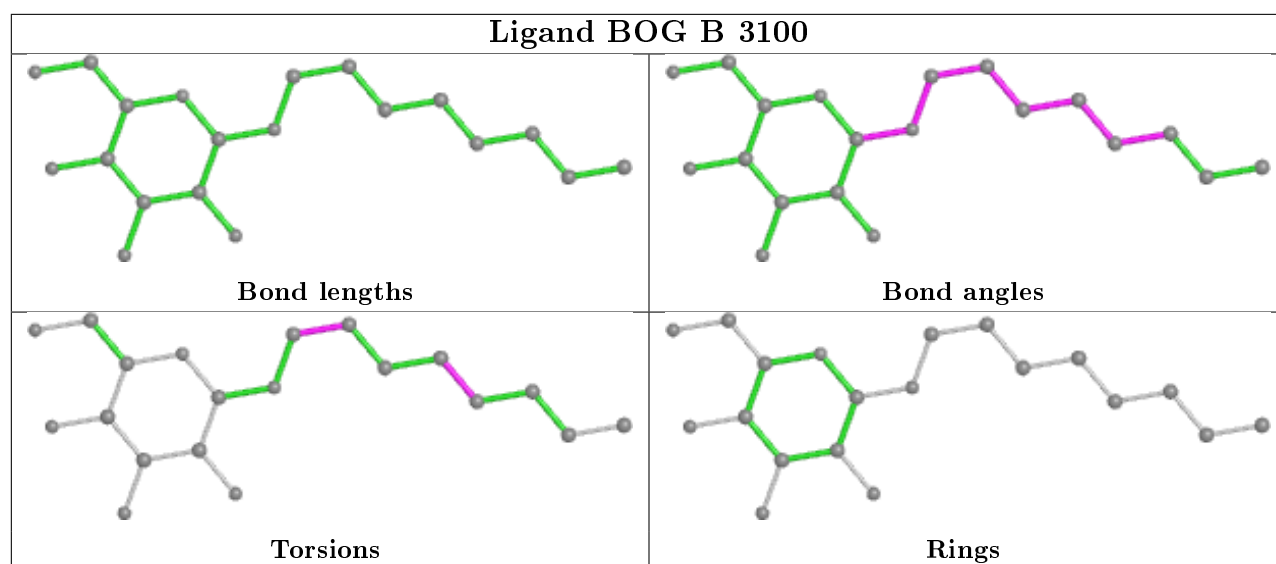
3 monomers are involved in 3 short contacts:

Mol	Chain	Res	Type	Clashes	Symm-Clashes
5	A	3000	EDO	1	0
2	A	901	HEM	1	0
4	A	906	INE	1	0

The following is a two-dimensional graphical depiction of Mogul quality analysis of bond lengths, bond angles, torsion angles, and ring geometry for all instances of the Ligand of Interest. In addition, ligands with molecular weight > 250 and outliers as shown on the validation Tables will

also be included. For torsion angles, if less than 5% of the Mogul distribution of torsion angles is within 10 degrees of the torsion angle in question, then that torsion angle is considered an outlier. Any bond that is central to one or more torsion angles identified as an outlier by Mogul will be highlighted in the graph. For rings, the root-mean-square deviation (RMSD) between the ring in question and similar rings identified by Mogul is calculated over all ring torsion angles. If the average RMSD is greater than 60 degrees and the minimal RMSD between the ring in question and any Mogul-identified rings is also greater than 60 degrees, then that ring is considered an outlier. The outliers are highlighted in purple. The color gray indicates Mogul did not find sufficient equivalents in the CSD to analyse the geometry.





5.7 Other polymers

There are no such residues in this entry.

5.8 Polymer linkage issues

There are no chain breaks in this entry.

6 Fit of model and data ⓘ

6.1 Protein, DNA and RNA chains ⓘ

EDS was not executed - this section is therefore empty.

6.2 Non-standard residues in protein, DNA, RNA chains ⓘ

EDS was not executed - this section is therefore empty.

6.3 Carbohydrates ⓘ

EDS was not executed - this section is therefore empty.

6.4 Ligands ⓘ

EDS was not executed - this section is therefore empty.

6.5 Other polymers ⓘ

EDS was not executed - this section is therefore empty.