



Full wwPDB X-ray Structure Validation Report ⓘ

May 25, 2020 – 11:07 pm BST

PDB ID : 3M9M
Title : Crystal Structure of Dpo4 in complex with DNA containing the major cisplatin lesion
Authors : Wong, J.H.Y.; Ling, H.
Deposited on : 2010-03-22
Resolution : 2.90 Å(reported)

This is a Full wwPDB X-ray Structure Validation Report for a publicly released PDB entry.

We welcome your comments at validation@mail.wwpdb.org

A user guide is available at

<https://www.wwpdb.org/validation/2017/XrayValidationReportHelp>

with specific help available everywhere you see the ⓘ symbol.

The following versions of software and data (see [references ⓘ](#)) were used in the production of this report:

MolProbity : 4.02b-467
Mogul : 1.8.5 (274361), CSD as541be (2020)
Xtriage (Phenix) : 1.13
EDS : 2.11
buster-report : 1.1.7 (2018)
Percentile statistics : 20191225.v01 (using entries in the PDB archive December 25th 2019)
Refmac : 5.8.0158
CCP4 : 7.0.044 (Gargrove)
Ideal geometry (proteins) : Engh & Huber (2001)
Ideal geometry (DNA, RNA) : Parkinson et al. (1996)
Validation Pipeline (wwPDB-VP) : 2.11

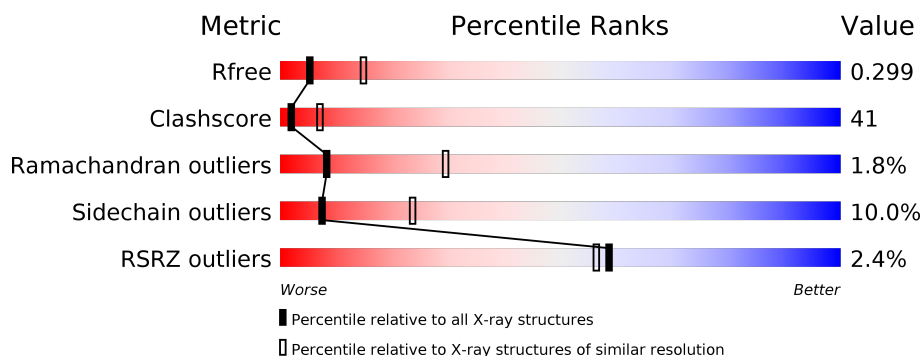
1 Overall quality at a glance

The following experimental techniques were used to determine the structure:

X-RAY DIFFRACTION

The reported resolution of this entry is 2.90 Å.

Percentile scores (ranging between 0-100) for global validation metrics of the entry are shown in the following graphic. The table shows the number of entries on which the scores are based.



Metric	Whole archive (#Entries)	Similar resolution (#Entries, resolution range(Å))
R_{free}	130704	1957 (2.90-2.90)
Clashscore	141614	2172 (2.90-2.90)
Ramachandran outliers	138981	2115 (2.90-2.90)
Sidechain outliers	138945	2117 (2.90-2.90)
RSRZ outliers	127900	1906 (2.90-2.90)

The table below summarises the geometric issues observed across the polymeric chains and their fit to the electron density. The red, orange, yellow and green segments on the lower bar indicate the fraction of residues that contain outliers for ≥ 3 , 2, 1 and 0 types of geometric quality criteria respectively. A grey segment represents the fraction of residues that are not modelled. The numeric value for each fraction is indicated below the corresponding segment, with a dot representing fractions $\leq 5\%$. The upper red bar (where present) indicates the fraction of residues that have poor fit to the electron density. The numeric value is given above the bar.

Mol	Chain	Length	Quality of chain
1	B	352	<div> <div>2%</div> <div> <div></div> <div>53%</div> <div>37%</div> <div>7%</div> <div></div> </div> </div>
2	P	13	<div> <div></div> <div> <div>23%</div> <div>69%</div> <div>8%</div> </div> </div>
3	T	18	<div> <div>6%</div> <div> <div></div> <div>61%</div> <div>11%</div> <div>11%</div> <div>17%</div> </div> </div>

2 Entry composition

There are 8 unique types of molecules in this entry. The entry contains 3401 atoms, of which 0 are hydrogens and 0 are deuteriums.

In the tables below, the ZeroOcc column contains the number of atoms modelled with zero occupancy, the AltConf column contains the number of residues with at least one atom in alternate conformation and the Trace column contains the number of residues modelled with at most 2 atoms.

- Molecule 1 is a protein called DNA polymerase IV.

Mol	Chain	Residues	Atoms					ZeroOcc	AltConf	Trace
1	B	341	Total	C	N	O	S	0	0	0
			2743	1760	472	504	7			

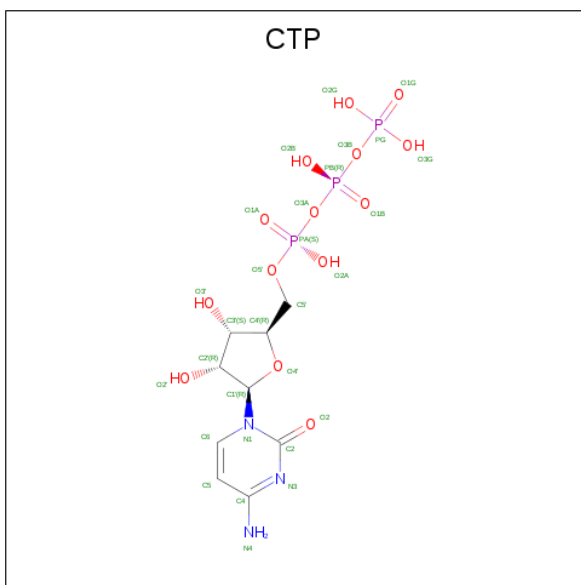
- Molecule 2 is a DNA chain called DNA (5'-D(*GP*GP*GP*GP*GP*AP*AP*GP*GP*AP*AP*AP*G)-3').

Mol	Chain	Residues	Atoms					ZeroOcc	AltConf	Trace
2	P	13	Total	C	N	O	P	0	0	0
			259	120	60	67	12			

- Molecule 3 is a DNA chain called DNA (5'-D(*TP*CP*TP*GP*GP*CP*TP*TP*TP*CP*CP*TP*TP*CP*CP*CP*CP*C)-3').

Mol	Chain	Residues	Atoms					ZeroOcc	AltConf	Trace
3	T	15	Total	C	N	O	P	0	0	0
			295	142	44	95	14			

- Molecule 4 is CYTIDINE-5'-TRIPHOSPHATE (three-letter code: CTP) (formula: C₉H₁₆N₃O₁₄P₃).

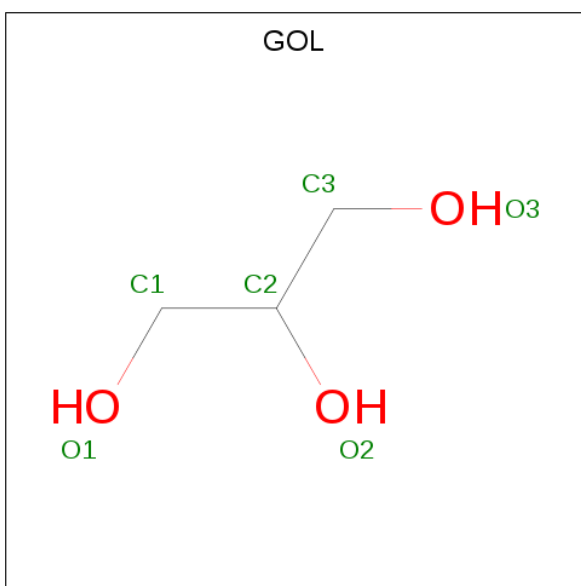


Mol	Chain	Residues	Atoms					ZeroOcc	AltConf
4	B	1	Total	C	N	O	P	0	0
			28	9	3	13	3		

- Molecule 5 is CALCIUM ION (three-letter code: CA) (formula: Ca).

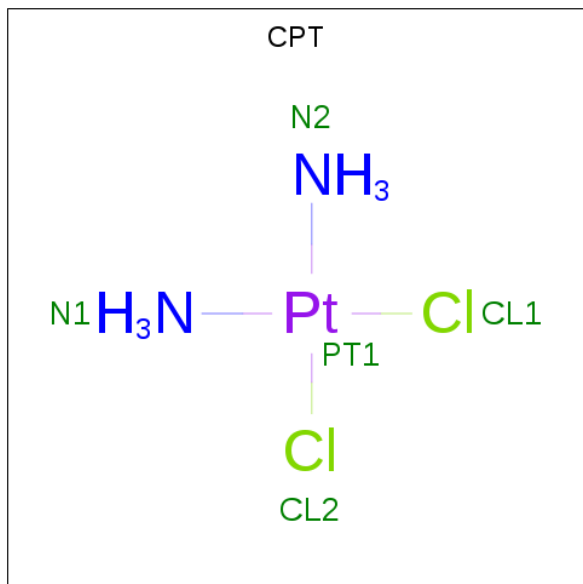
Mol	Chain	Residues	Atoms	ZeroOcc	AltConf
5	B	4	Total Ca 4 4	0	0

- Molecule 6 is GLYCEROL (three-letter code: GOL) (formula: $\text{C}_3\text{H}_8\text{O}_3$).



Mol	Chain	Residues	Atoms			ZeroOcc	AltConf
6	B	1	Total	C	O	0	0
			6	3	3		
6	P	1	Total	C	O	0	0
			6	3	3		
6	P	1	Total	C	O	0	0
			6	3	3		

- Molecule 7 is Cisplatin (three-letter code: CPT) (formula: $\text{Cl}_2\text{H}_6\text{N}_2\text{Pt}$).



Mol	Chain	Residues	Atoms			ZeroOcc	AltConf
7	T	1	Total	N	Pt	0	0
			3	2	1		

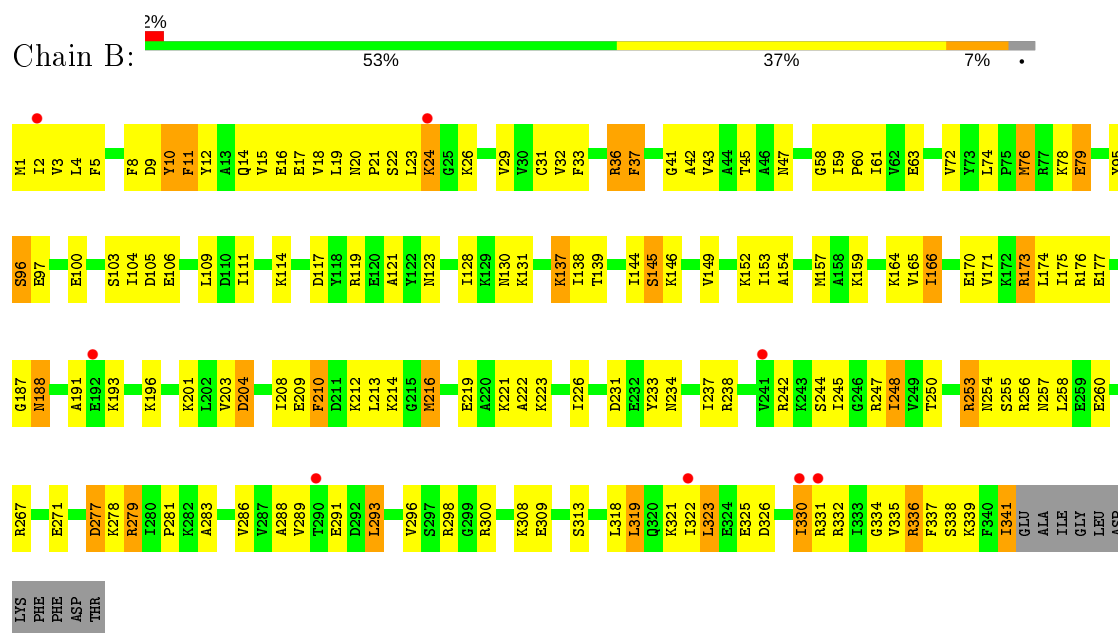
- Molecule 8 is water.

Mol	Chain	Residues	Atoms		ZeroOcc	AltConf
8	B	33	Total	O	0	0
			33	33		
8	P	3	Total	O	0	0
			3	3		
8	T	15	Total	O	0	0
			15	15		

3 Residue-property plots [i](#)

These plots are drawn for all protein, RNA and DNA chains in the entry. The first graphic for a chain summarises the proportions of the various outlier classes displayed in the second graphic. The second graphic shows the sequence view annotated by issues in geometry and electron density. Residues are color-coded according to the number of geometric quality criteria for which they contain at least one outlier: green = 0, yellow = 1, orange = 2 and red = 3 or more. A red dot above a residue indicates a poor fit to the electron density ($RSRZ > 2$). Stretches of 2 or more consecutive residues without any outlier are shown as a green connector. Residues present in the sample, but not in the model, are shown in grey.

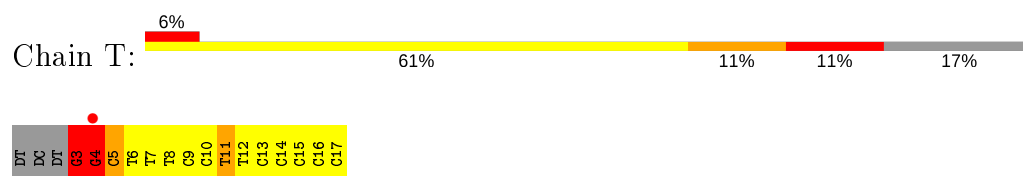
• Molecule 1: DNA polymerase IV



• Molecule 2: DNA (5'-D(*GP*GP*GP*GP*GP*AP*AP*GP*GP*AP*AP*AP*G)-3')



• Molecule 3: DNA (5'-D(*TP*CP*TP*GP*GP*CP*TP*TP*TP*CP*CP*TP*TP*CP*CP*CP*CP*C)-3')



4 Data and refinement statistics

Property	Value	Source
Space group	P 21 21 2	Depositor
Cell constants a, b, c, α , β , γ	98.58Å 101.19Å 52.42Å 90.00° 90.00° 90.00°	Depositor
Resolution (Å)	45.00 – 2.90 46.28 – 2.90	Depositor EDS
% Data completeness (in resolution range)	98.5 (45.00-2.90) 97.7 (46.28-2.90)	Depositor EDS
R_{merge}	0.06	Depositor
R_{sym}	(Not available)	Depositor
$\langle I/\sigma(I) \rangle$ ¹	1.89 (at 2.91Å)	Xtriage
Refinement program	CNS	Depositor
R, R_{free}	0.285 , 0.309 0.281 , 0.299	Depositor DCC
R_{free} test set	1258 reflections (5.90%)	wwPDB-VP
Wilson B-factor (Å ²)	68.4	Xtriage
Anisotropy	0.247	Xtriage
Bulk solvent k_{sol} (e/Å ³), B_{sol} (Å ²)	0.32 , 48.3	EDS
L-test for twinning ²	$\langle L \rangle = 0.48$, $\langle L^2 \rangle = 0.31$	Xtriage
Estimated twinning fraction	0.020 for k,h,-l	Xtriage
F_o, F_c correlation	0.89	EDS
Total number of atoms	3401	wwPDB-VP
Average B, all atoms (Å ²)	62.0	wwPDB-VP

Xtriage's analysis on translational NCS is as follows: *The largest off-origin peak in the Patterson function is 5.52% of the height of the origin peak. No significant pseudotranslation is detected.*

¹Intensities estimated from amplitudes.

²Theoretical values of $\langle |L| \rangle$, $\langle L^2 \rangle$ for acentric reflections are 0.5, 0.333 respectively for untwinned datasets, and 0.375, 0.2 for perfectly twinned datasets.

5 Model quality [i](#)

5.1 Standard geometry [i](#)

Bond lengths and bond angles in the following residue types are not validated in this section: GOL, CA, CTP, CPT

The Z score for a bond length (or angle) is the number of standard deviations the observed value is removed from the expected value. A bond length (or angle) with $|Z| > 5$ is considered an outlier worth inspection. RMSZ is the root-mean-square of all Z scores of the bond lengths (or angles).

Mol	Chain	Bond lengths		Bond angles	
		RMSZ	$\# Z > 5$	RMSZ	$\# Z > 5$
1	B	0.32	0/2782	0.65	0/3736
2	P	0.73	0/294	0.94	2/454 (0.4%)
3	T	2.44	13/323 (4.0%)	2.11	20/492 (4.1%)
All	All	0.83	13/3399 (0.4%)	0.94	22/4682 (0.5%)

Chiral center outliers are detected by calculating the chiral volume of a chiral center and verifying if the center is modelled as a planar moiety or with the opposite hand. A planarity outlier is detected by checking planarity of atoms in a peptide group, atoms in a mainchain group or atoms of a sidechain that are expected to be planar.

Mol	Chain	#Chirality outliers	#Planarity outliers
3	T	0	2

All (13) bond length outliers are listed below:

Mol	Chain	Res	Type	Atoms	Z	Observed(Å)	Ideal(Å)
3	T	3	DG	C8-N7	-15.85	1.21	1.30
3	T	4	DG	N9-C8	15.15	1.48	1.37
3	T	3	DG	N9-C4	14.66	1.49	1.38
3	T	4	DG	N9-C4	-14.48	1.26	1.38
3	T	4	DG	C8-N7	13.38	1.39	1.30
3	T	3	DG	N3-C4	11.64	1.43	1.35
3	T	4	DG	C5-C6	-9.99	1.32	1.42
3	T	4	DG	C1'-N9	9.29	1.61	1.49
3	T	5	DC	C5'-C4'	7.99	1.60	1.51
3	T	3	DG	C2-N3	6.51	1.38	1.32
3	T	4	DG	C2-N3	-5.83	1.28	1.32
3	T	4	DG	N7-C5	-5.46	1.35	1.39
3	T	3	DG	N9-C8	-5.02	1.34	1.37

All (22) bond angle outliers are listed below:

Mol	Chain	Res	Type	Atoms	Z	Observed(°)	Ideal(°)
3	T	3	DG	O4'-C1'-N9	-18.19	95.27	108.00
3	T	3	DG	N3-C4-N9	15.45	135.27	126.00
3	T	3	DG	N3-C4-C5	-10.76	123.22	128.60
3	T	3	DG	N9-C4-C5	-9.72	101.51	105.40
3	T	3	DG	C5-C6-N1	8.12	115.56	111.50
3	T	4	DG	N7-C8-N9	-7.94	109.13	113.10
3	T	4	DG	C4-N9-C1'	-7.73	116.45	126.50
3	T	4	DG	C4-C5-N7	7.49	113.80	110.80
3	T	3	DG	C2-N3-C4	7.33	115.57	111.90
3	T	4	DG	C8-N9-C1'	7.07	136.20	127.00
3	T	4	DG	C6-C5-N7	-6.57	126.46	130.40
3	T	3	DG	C8-N9-C1'	-6.10	119.07	127.00
3	T	3	DG	N7-C8-N9	6.08	116.14	113.10
3	T	17	DC	C1'-O4'-C4'	-6.07	104.03	110.10
3	T	4	DG	N9-C4-C5	5.95	107.78	105.40
3	T	3	DG	C4-N9-C1'	5.58	133.76	126.50
2	P	12	DA	OP2-P-O3'	5.58	117.48	105.20
3	T	4	DG	O4'-C1'-N9	5.55	111.89	108.00
2	P	12	DA	O5'-P-OP1	5.55	117.36	110.70
3	T	3	DG	C5-N7-C8	5.36	106.98	104.30
3	T	11	DT	C3'-C2'-C1'	-5.34	96.09	102.50
3	T	4	DG	C5-N7-C8	-5.34	101.63	104.30

There are no chirality outliers.

All (2) planarity outliers are listed below:

Mol	Chain	Res	Type	Group
3	T	3	DG	Sidechain
3	T	4	DG	Sidechain

5.2 Too-close contacts

In the following table, the Non-H and H(model) columns list the number of non-hydrogen atoms and hydrogen atoms in the chain respectively. The H(added) column lists the number of hydrogen atoms added and optimized by MolProbity. The Clashes column lists the number of clashes within the asymmetric unit, whereas Symm-Clashes lists symmetry related clashes.

Mol	Chain	Non-H	H(model)	H(added)	Clashes	Symm-Clashes
1	B	2743	0	2889	172	0
2	P	259	0	133	23	0
3	T	295	0	173	81	0
4	B	28	0	10	6	0

Continued on next page...

Continued from previous page...

Mol	Chain	Non-H	H(model)	H(added)	Clashes	Symm-Clashes
5	B	4	0	0	0	0
6	B	6	0	8	0	0
6	P	12	0	14	0	0
7	T	3	0	0	0	0
8	B	33	0	0	1	0
8	P	3	0	0	1	0
8	T	15	0	0	1	0
All	All	3401	0	3227	263	0

The all-atom clashscore is defined as the number of clashes found per 1000 atoms (including hydrogen atoms). The all-atom clashscore for this structure is 41.

All (263) close contacts within the same asymmetric unit are listed below, sorted by their clash magnitude.

Atom-1	Atom-2	Interatomic distance (Å)	Clash overlap (Å)
3:T:8:DT:H6	3:T:8:DT:H5'	1.10	1.16
3:T:5:DC:H2'	3:T:6:DT:H71	1.15	1.13
3:T:9:DC:H2''	3:T:10:DC:H5''	1.13	1.08
1:B:332:ARG:HH22	3:T:5:DC:H5'	1.18	1.08
3:T:5:DC:H2'	3:T:6:DT:C7	1.86	1.05
3:T:8:DT:H2'	3:T:9:DC:C6	1.96	1.01
3:T:14:DC:H2''	3:T:15:DC:O5'	1.59	1.00
3:T:9:DC:C2'	3:T:10:DC:H5''	1.93	0.98
3:T:8:DT:C6	3:T:8:DT:H5'	2.00	0.97
2:P:5:DG:H2''	2:P:6:DA:N7	1.80	0.96
1:B:332:ARG:HH22	3:T:5:DC:C5'	1.79	0.94
3:T:8:DT:H6	3:T:8:DT:C5'	1.81	0.93
3:T:5:DC:C2'	3:T:6:DT:H71	2.01	0.90
1:B:43:VAL:HG23	1:B:59:ILE:O	1.72	0.90
3:T:3:DG:O4'	3:T:3:DG:P	2.30	0.90
3:T:9:DC:H2''	3:T:10:DC:C5'	2.01	0.89
3:T:15:DC:H2''	3:T:16:DC:O5'	1.72	0.89
3:T:3:DG:H2''	3:T:4:DG:H5'	1.54	0.89
1:B:164:LYS:HG3	1:B:165:VAL:N	1.86	0.89
1:B:42:ALA:HB2	3:T:4:DG:H5''	1.56	0.88
2:P:1:DG:H2''	2:P:2:DG:H5'	1.53	0.88
3:T:12:DT:H2''	3:T:13:DC:C6	2.09	0.87
3:T:7:DT:H2''	3:T:8:DT:H5''	1.54	0.86
4:B:2001:CTP:HN41	3:T:4:DG:N2	1.73	0.86
1:B:166:ILE:CG2	1:B:170:GLU:HG2	2.05	0.86
3:T:5:DC:H2'	3:T:6:DT:C6	2.10	0.85

Continued on next page...

Continued from previous page...

Atom-1	Atom-2	Interatomic distance (Å)	Clash overlap (Å)
1:B:14:GLN:HE22	1:B:139:THR:H	1.21	0.85
1:B:14:GLN:HE22	1:B:139:THR:N	1.75	0.84
3:T:14:DC:H2'	3:T:15:DC:C6	2.13	0.84
3:T:5:DC:C2'	3:T:6:DT:C6	2.62	0.82
1:B:166:ILE:HG22	1:B:170:GLU:HG2	1.61	0.82
3:T:5:DC:H2'	3:T:6:DT:C5	2.14	0.82
1:B:210:PHE:C	1:B:210:PHE:HD2	1.86	0.79
2:P:1:DG:C2'	2:P:2:DG:H5'	2.12	0.79
1:B:222:ALA:O	1:B:226:ILE:HG13	1.83	0.79
1:B:15:VAL:O	1:B:19:LEU:HD13	1.84	0.78
3:T:3:DG:P	3:T:3:DG:N3	2.57	0.77
1:B:144:ILE:HB	1:B:165:VAL:HG22	1.66	0.77
1:B:210:PHE:HE2	1:B:214:LYS:HB2	1.49	0.77
1:B:72:VAL:HG12	1:B:74:LEU:HD21	1.68	0.76
3:T:10:DC:H2''	3:T:11:DT:C6	2.19	0.76
1:B:137:LYS:HB3	1:B:137:LYS:NZ	2.01	0.75
1:B:22:SER:O	1:B:26:LYS:HE2	1.87	0.75
3:T:5:DC:H5''	3:T:5:DC:O2	1.87	0.75
1:B:336:ARG:NH2	3:T:7:DT:OP2	2.20	0.74
1:B:210:PHE:C	1:B:210:PHE:CD2	2.60	0.74
3:T:14:DC:H2'	3:T:15:DC:C5	2.22	0.74
3:T:7:DT:C2'	3:T:8:DT:H5''	2.17	0.73
1:B:76:MET:HE2	1:B:78:LYS:HB2	1.69	0.73
1:B:14:GLN:NE2	1:B:139:THR:H	1.86	0.73
1:B:173:ARG:HB3	1:B:173:ARG:CZ	2.18	0.72
3:T:7:DT:H2''	3:T:8:DT:C5'	2.19	0.72
2:P:6:DA:H2''	2:P:7:DA:C8	2.25	0.71
3:T:10:DC:H2'	3:T:11:DT:C7	2.20	0.71
2:P:10:DA:H2''	2:P:11:DA:OP2	1.90	0.71
1:B:319:LEU:HD12	1:B:319:LEU:O	1.91	0.70
2:P:1:DG:H1'	2:P:2:DG:H5'	1.72	0.70
1:B:331:ARG:HG3	1:B:332:ARG:HG3	1.71	0.70
3:T:5:DC:C2'	3:T:6:DT:H6	2.03	0.70
1:B:188:ASN:N	1:B:188:ASN:HD22	1.90	0.69
1:B:154:ALA:HA	1:B:157:MET:HE2	1.73	0.69
1:B:332:ARG:NH2	3:T:5:DC:O5'	2.27	0.68
1:B:4:LEU:O	1:B:4:LEU:HD23	1.94	0.68
2:P:11:DA:H1'	2:P:12:DA:H5'	1.76	0.68
1:B:248:ILE:HG12	1:B:334:GLY:HA3	1.76	0.68
1:B:36:ARG:O	1:B:37:PHE:HB3	1.94	0.67
3:T:3:DG:H8	3:T:4:DG:C8	2.11	0.67

Continued on next page...

Continued from previous page...

Atom-1	Atom-2	Interatomic distance (Å)	Clash overlap (Å)
1:B:254:ASN:ND2	1:B:291:GLU:HB3	2.10	0.67
1:B:9:ASP:O	1:B:11:PHE:N	2.28	0.67
3:T:5:DC:O2	3:T:6:DT:H73	1.95	0.67
1:B:14:GLN:NE2	1:B:138:ILE:HA	2.11	0.66
4:B:2001:CTP:N4	3:T:4:DG:N2	2.43	0.66
3:T:14:DC:C2'	3:T:15:DC:O5'	2.43	0.65
3:T:11:DT:O5'	3:T:11:DT:H2'	1.96	0.65
2:P:6:DA:H2''	2:P:7:DA:H8	1.61	0.64
3:T:8:DT:C6	3:T:8:DT:C5'	2.72	0.64
1:B:332:ARG:NH2	3:T:5:DC:C5'	2.57	0.64
1:B:244:SER:O	1:B:245:ILE:HG13	1.98	0.63
2:P:1:DG:C1'	2:P:2:DG:H5'	2.28	0.63
2:P:9:DG:H2'	2:P:10:DA:C8	2.34	0.63
1:B:20:ASN:O	1:B:23:LEU:HG	1.98	0.63
1:B:154:ALA:CA	1:B:166:ILE:HD11	2.28	0.63
1:B:2:ILE:O	1:B:2:ILE:HG22	1.97	0.62
1:B:42:ALA:CB	3:T:4:DG:H5''	2.29	0.61
1:B:335:VAL:HG22	1:B:336:ARG:N	2.15	0.61
1:B:208:ILE:HD13	1:B:213:LEU:HD13	1.82	0.61
3:T:5:DC:H2''	3:T:6:DT:H6	1.65	0.61
1:B:149:VAL:O	1:B:153:ILE:HG13	2.01	0.61
3:T:8:DT:H2'	3:T:9:DC:C5	2.34	0.61
2:P:11:DA:H2''	2:P:12:DA:OP2	1.99	0.60
3:T:10:DC:H2'	3:T:11:DT:H71	1.82	0.60
1:B:173:ARG:O	1:B:177:GLU:HG3	2.01	0.60
1:B:296:VAL:HG12	1:B:298:ARG:HH12	1.67	0.60
1:B:335:VAL:HG22	1:B:336:ARG:H	1.66	0.60
1:B:267:ARG:O	1:B:271:GLU:HG3	2.02	0.59
3:T:5:DC:C2	3:T:6:DT:C7	2.84	0.59
1:B:19:LEU:HD12	1:B:19:LEU:N	2.17	0.59
2:P:8:DG:H2''	2:P:9:DG:OP2	2.02	0.59
1:B:4:LEU:HD22	1:B:109:LEU:HD22	1.83	0.59
3:T:5:DC:C2	3:T:6:DT:H73	2.38	0.59
2:P:9:DG:C2'	2:P:10:DA:C8	2.86	0.59
3:T:10:DC:H2''	3:T:11:DT:C5	2.38	0.59
3:T:5:DC:H2''	3:T:6:DT:C6	2.37	0.59
1:B:196:LYS:HB3	8:B:386:HOH:O	2.04	0.58
1:B:166:ILE:HG23	1:B:170:GLU:HG2	1.84	0.58
1:B:36:ARG:HD2	1:B:331:ARG:NH2	2.18	0.58
1:B:210:PHE:O	1:B:210:PHE:HD2	1.87	0.57
1:B:11:PHE:HB3	4:B:2001:CTP:O3'	2.04	0.57

Continued on next page...

Continued from previous page...

Atom-1	Atom-2	Interatomic distance (Å)	Clash overlap (Å)
1:B:4:LEU:HD22	1:B:109:LEU:HB2	1.87	0.57
1:B:119:ARG:O	1:B:123:ASN:ND2	2.38	0.57
2:P:5:DG:H2''	2:P:6:DA:C8	2.37	0.57
2:P:9:DG:H2''	2:P:10:DA:H5'	1.85	0.56
1:B:15:VAL:HG12	1:B:15:VAL:O	2.05	0.56
1:B:18:VAL:C	1:B:19:LEU:HD12	2.26	0.56
1:B:173:ARG:NH1	1:B:177:GLU:OE1	2.26	0.56
3:T:3:DG:C2'	3:T:4:DG:H5'	2.32	0.56
4:B:2001:CTP:N4	3:T:4:DG:H22	2.04	0.56
1:B:137:LYS:HZ3	1:B:137:LYS:HB3	1.70	0.55
1:B:253:ARG:NH1	1:B:260:GLU:OE2	2.39	0.55
1:B:32:VAL:HG11	3:T:5:DC:OP1	2.06	0.55
3:T:5:DC:O2	3:T:6:DT:C7	2.55	0.55
1:B:171:VAL:O	1:B:175:ILE:HG13	2.06	0.55
1:B:173:ARG:NH1	1:B:173:ARG:HB3	2.22	0.54
3:T:14:DC:C2'	3:T:15:DC:C6	2.88	0.54
1:B:1:MET:CE	1:B:234:ASN:HD22	2.21	0.54
1:B:166:ILE:HG22	1:B:170:GLU:CG	2.37	0.54
3:T:12:DT:C2'	3:T:13:DC:C6	2.87	0.54
3:T:5:DC:C2	3:T:6:DT:C5	2.96	0.53
1:B:237:ILE:O	1:B:237:ILE:HG22	2.07	0.53
1:B:277:ASP:O	1:B:278:LYS:HB2	2.08	0.53
1:B:103:SER:OG	1:B:106:GLU:HB2	2.08	0.53
1:B:137:LYS:HZ2	1:B:137:LYS:HB3	1.74	0.53
1:B:111:ILE:HB	1:B:114:LYS:HB2	1.91	0.53
1:B:1:MET:HE3	1:B:234:ASN:HD22	1.74	0.53
3:T:3:DG:N3	3:T:3:DG:OP2	2.42	0.53
2:P:1:DG:H1'	2:P:2:DG:C5'	2.38	0.52
1:B:33:PHE:CE1	1:B:61:ILE:HD13	2.44	0.52
1:B:298:ARG:HG2	1:B:298:ARG:HH11	1.73	0.52
3:T:10:DC:C2'	3:T:11:DT:C5	2.92	0.52
1:B:254:ASN:HA	1:B:330:ILE:O	2.10	0.52
1:B:95:TYR:O	1:B:96:SER:HB2	2.10	0.52
1:B:254:ASN:HD22	1:B:291:GLU:HB3	1.74	0.51
1:B:289:VAL:CG1	1:B:293:LEU:HA	2.40	0.51
1:B:154:ALA:HA	1:B:157:MET:CE	2.40	0.51
1:B:1:MET:HE2	1:B:234:ASN:ND2	2.25	0.51
1:B:32:VAL:O	1:B:41:GLY:HA3	2.11	0.51
1:B:5:PHE:CZ	1:B:106:GLU:HG2	2.46	0.51
1:B:9:ASP:O	1:B:10:TYR:C	2.49	0.51
1:B:188:ASN:ND2	1:B:188:ASN:N	2.58	0.50

Continued on next page...

Continued from previous page...

Atom-1	Atom-2	Interatomic distance (Å)	Clash overlap (Å)
3:T:10:DC:C2'	3:T:11:DT:C7	2.89	0.50
1:B:221:LYS:HB2	8:T:393:HOH:O	2.12	0.50
3:T:10:DC:C2'	3:T:11:DT:H71	2.41	0.50
1:B:332:ARG:NH2	3:T:5:DC:H5'	2.04	0.50
1:B:242:ARG:HG3	1:B:242:ARG:HH11	1.77	0.50
3:T:9:DC:C3'	3:T:10:DC:H5''	2.41	0.50
3:T:12:DT:C2'	3:T:13:DC:C5	2.94	0.50
1:B:149:VAL:HG23	1:B:233:TYR:CE2	2.47	0.50
1:B:187:GLY:O	1:B:191:ALA:HB2	2.12	0.49
1:B:248:ILE:CG1	1:B:334:GLY:HA3	2.40	0.49
3:T:15:DC:C2'	3:T:16:DC:O5'	2.54	0.49
1:B:319:LEU:HD12	1:B:319:LEU:C	2.32	0.49
4:B:2001:CTP:HN41	3:T:4:DG:H21	1.55	0.49
1:B:210:PHE:CE2	1:B:214:LYS:HB2	2.39	0.49
3:T:4:DG:OP2	3:T:4:DG:H3'	2.13	0.48
3:T:5:DC:H2''	3:T:6:DT:C5'	2.42	0.48
1:B:193:LYS:HB3	1:B:216:MET:HG2	1.95	0.48
1:B:309:GLU:CD	1:B:309:GLU:H	2.15	0.48
2:P:1:DG:H2''	2:P:2:DG:C5'	2.33	0.48
3:T:8:DT:C2'	3:T:9:DC:C6	2.84	0.48
1:B:288:ALA:HB1	1:B:330:ILE:HG23	1.95	0.48
3:T:14:DC:H2''	3:T:15:DC:C5'	2.43	0.48
1:B:293:LEU:CD2	3:T:3:DG:H5'	2.43	0.48
3:T:5:DC:C4'	3:T:5:DC:OP1	2.62	0.48
1:B:212:LYS:O	1:B:212:LYS:CG	2.61	0.48
1:B:219:GLU:O	1:B:223:LYS:HG2	2.14	0.48
1:B:248:ILE:HA	1:B:334:GLY:HA3	1.96	0.48
1:B:63:GLU:OE1	1:B:63:GLU:HA	2.14	0.47
1:B:154:ALA:N	1:B:166:ILE:HD11	2.29	0.47
1:B:105:ASP:OD2	4:B:2001:CTP:H5'2	2.14	0.47
1:B:164:LYS:HE3	1:B:165:VAL:O	2.13	0.47
1:B:12:TYR:HB2	1:B:45:THR:CG2	2.44	0.47
1:B:289:VAL:HB	1:B:332:ARG:HB2	1.97	0.47
1:B:248:ILE:HG22	1:B:332:ARG:HH21	1.80	0.47
1:B:100:GLU:HG3	1:B:238:ARG:O	2.15	0.47
1:B:289:VAL:HG12	1:B:293:LEU:HA	1.95	0.47
2:P:9:DG:H2''	2:P:10:DA:C8	2.49	0.47
1:B:130:ASN:O	1:B:131:LYS:C	2.53	0.47
1:B:12:TYR:HB2	1:B:45:THR:HG21	1.97	0.47
1:B:298:ARG:HG2	1:B:298:ARG:NH1	2.29	0.47
1:B:21:PRO:O	1:B:24:LYS:HG2	2.15	0.46

Continued on next page...

Continued from previous page...

Atom-1	Atom-2	Interatomic distance (Å)	Clash overlap (Å)
1:B:117:ASP:OD1	1:B:117:ASP:N	2.48	0.46
1:B:154:ALA:HA	1:B:166:ILE:HD11	1.96	0.46
1:B:166:ILE:HG21	1:B:174:LEU:CD1	2.45	0.46
1:B:79:GLU:H	1:B:79:GLU:CD	2.19	0.46
1:B:17:GLU:HG2	1:B:23:LEU:HB2	1.97	0.46
1:B:104:ILE:O	1:B:104:ILE:HG12	2.15	0.46
1:B:14:GLN:C	1:B:16:GLU:H	2.17	0.46
1:B:137:LYS:CB	1:B:137:LYS:NZ	2.77	0.46
1:B:166:ILE:HG22	1:B:170:GLU:HB3	1.98	0.46
1:B:9:ASP:C	1:B:11:PHE:N	2.68	0.46
1:B:33:PHE:CD1	1:B:61:ILE:HD13	2.51	0.46
1:B:296:VAL:CG1	1:B:298:ARG:HH12	2.28	0.45
1:B:293:LEU:HD22	3:T:3:DG:H5'	1.98	0.45
1:B:3:VAL:N	1:B:145:SER:O	2.49	0.45
1:B:159:LYS:HB3	1:B:159:LYS:HE2	1.72	0.45
1:B:21:PRO:O	1:B:24:LYS:CG	2.64	0.45
1:B:76:MET:HE1	1:B:78:LYS:HD3	1.98	0.45
1:B:296:VAL:HG12	1:B:298:ARG:NH1	2.32	0.45
1:B:97:GLU:CD	1:B:97:GLU:H	2.21	0.45
1:B:19:LEU:CD1	1:B:19:LEU:N	2.79	0.45
1:B:256:ARG:NH1	1:B:326:ASP:O	2.44	0.45
2:P:11:DA:H1'	2:P:12:DA:C5'	2.45	0.44
1:B:5:PHE:CD2	1:B:152:LYS:HA	2.53	0.44
1:B:173:ARG:CG	1:B:173:ARG:HH11	2.30	0.44
1:B:36:ARG:O	1:B:37:PHE:CB	2.63	0.44
1:B:174:LEU:C	1:B:176:ARG:N	2.69	0.44
1:B:319:LEU:O	1:B:322:ILE:HB	2.18	0.44
3:T:5:DC:H2''	3:T:6:DT:H5'	1.99	0.44
1:B:166:ILE:HG21	1:B:174:LEU:HD11	1.99	0.44
1:B:8:PHE:N	1:B:8:PHE:CD1	2.84	0.44
3:T:12:DT:H2'	3:T:13:DC:C5	2.53	0.44
1:B:14:GLN:C	1:B:16:GLU:N	2.71	0.43
3:T:5:DC:H2''	3:T:6:DT:O5'	2.18	0.43
2:P:5:DG:O5'	8:P:28:HOH:O	2.21	0.43
1:B:14:GLN:HE21	1:B:138:ILE:HA	1.80	0.43
1:B:1:MET:CE	1:B:234:ASN:ND2	2.81	0.43
1:B:213:LEU:HA	1:B:213:LEU:HD12	1.79	0.43
1:B:289:VAL:O	1:B:331:ARG:HG2	2.19	0.43
1:B:173:ARG:HG2	1:B:173:ARG:HH11	1.84	0.42
1:B:208:ILE:HG12	1:B:209:GLU:O	2.18	0.42
1:B:29:VAL:CG1	1:B:43:VAL:HG13	2.49	0.42

Continued on next page...

Continued from previous page...

Atom-1	Atom-2	Interatomic distance (Å)	Clash overlap (Å)
1:B:4:LEU:HD11	1:B:128:ILE:HD12	2.01	0.42
1:B:14:GLN:NE2	1:B:139:THR:N	2.52	0.42
1:B:341:ILE:O	1:B:341:ILE:HG22	2.19	0.42
3:T:7:DT:C1'	3:T:8:DT:H5''	2.50	0.42
1:B:154:ALA:HB2	1:B:166:ILE:HD11	2.01	0.42
1:B:193:LYS:HD3	1:B:216:MET:HG3	2.01	0.42
1:B:201:LYS:O	1:B:204:ASP:HB2	2.20	0.42
1:B:22:SER:O	1:B:26:LYS:CE	2.60	0.42
1:B:146:LYS:NZ	1:B:231:ASP:OD1	2.51	0.42
1:B:321:LYS:HG2	1:B:325:GLU:OE2	2.20	0.42
1:B:257:ASN:HB3	1:B:260:GLU:HB2	2.02	0.42
1:B:245:ILE:HD11	1:B:279:ARG:CZ	2.50	0.42
1:B:256:ARG:NH2	1:B:323:LEU:O	2.53	0.42
2:P:5:DG:C2'	2:P:6:DA:N7	2.68	0.42
1:B:15:VAL:O	1:B:15:VAL:CG1	2.68	0.41
1:B:4:LEU:HD23	1:B:4:LEU:C	2.40	0.41
1:B:58:GLY:HA2	3:T:4:DG:N1	2.36	0.41
1:B:286:VAL:HG23	1:B:318:LEU:CD1	2.50	0.41
1:B:283:ALA:HB3	1:B:339:LYS:HG2	2.02	0.41
3:T:8:DT:H2''	3:T:9:DC:OP1	2.21	0.41
3:T:3:DG:C8	3:T:4:DG:C8	3.01	0.41
1:B:318:LEU:O	1:B:319:LEU:C	2.58	0.41
1:B:121:ALA:HB1	1:B:144:ILE:HG21	2.03	0.41
1:B:277:ASP:O	1:B:278:LYS:CB	2.69	0.41
1:B:59:ILE:HA	1:B:60:PRO:HD3	1.89	0.41
1:B:281:PRO:CB	1:B:337:PHE:HB3	2.51	0.40
3:T:8:DT:C4	3:T:9:DC:N4	2.90	0.40
1:B:308:LYS:O	1:B:309:GLU:C	2.59	0.40
1:B:76:MET:CE	1:B:78:LYS:HD3	2.51	0.40
1:B:58:GLY:HA2	3:T:4:DG:C2	2.56	0.40
2:P:6:DA:H8	2:P:6:DA:O5'	2.05	0.40
2:P:6:DA:C8	2:P:6:DA:O5'	2.75	0.40

There are no symmetry-related clashes.

5.3 Torsion angles ⓘ

5.3.1 Protein backbone ⓘ

In the following table, the Percentiles column shows the percent Ramachandran outliers of the chain as a percentile score with respect to all X-ray entries followed by that with respect to entries

of similar resolution.

The Analysed column shows the number of residues for which the backbone conformation was analysed, and the total number of residues.

Mol	Chain	Analysed	Favoured	Allowed	Outliers	Percentiles	
1	B	339/352 (96%)	299 (88%)	34 (10%)	6 (2%)	8	29

All (6) Ramachandran outliers are listed below:

Mol	Chain	Res	Type
1	B	10	TYR
1	B	11	PHE
1	B	37	PHE
1	B	47	ASN
1	B	277	ASP
1	B	96	SER

5.3.2 Protein sidechains ⓘ

In the following table, the Percentiles column shows the percent sidechain outliers of the chain as a percentile score with respect to all X-ray entries followed by that with respect to entries of similar resolution.

The Analysed column shows the number of residues for which the sidechain conformation was analysed, and the total number of residues.

Mol	Chain	Analysed	Rotameric	Outliers	Percentiles	
1	B	300/309 (97%)	270 (90%)	30 (10%)	7	23

All (30) residues with a non-rotameric sidechain are listed below:

Mol	Chain	Res	Type
1	B	24	LYS
1	B	31	CYS
1	B	36	ARG
1	B	76	MET
1	B	79	GLU
1	B	137	LYS
1	B	145	SER
1	B	166	ILE
1	B	173	ARG
1	B	188	ASN
1	B	203	VAL

Continued on next page...

Continued from previous page...

Mol	Chain	Res	Type
1	B	204	ASP
1	B	210	PHE
1	B	216	MET
1	B	247	ARG
1	B	248	ILE
1	B	250	THR
1	B	253	ARG
1	B	255	SER
1	B	258	LEU
1	B	279	ARG
1	B	293	LEU
1	B	300	ARG
1	B	313	SER
1	B	319	LEU
1	B	323	LEU
1	B	330	ILE
1	B	336	ARG
1	B	338	SER
1	B	341	ILE

Some sidechains can be flipped to improve hydrogen bonding and reduce clashes. All (5) such sidechains are listed below:

Mol	Chain	Res	Type
1	B	14	GLN
1	B	123	ASN
1	B	188	ASN
1	B	234	ASN
1	B	304	HIS

5.3.3 RNA ⓘ

There are no RNA molecules in this entry.

5.4 Non-standard residues in protein, DNA, RNA chains ⓘ

There are no non-standard protein/DNA/RNA residues in this entry.

5.5 Carbohydrates ⓘ

There are no carbohydrates in this entry.

5.6 Ligand geometry

Of 9 ligands modelled in this entry, 4 are monoatomic - leaving 5 for Mogul analysis.

In the following table, the Counts columns list the number of bonds (or angles) for which Mogul statistics could be retrieved, the number of bonds (or angles) that are observed in the model and the number of bonds (or angles) that are defined in the Chemical Component Dictionary. The Link column lists molecule types, if any, to which the group is linked. The Z score for a bond length (or angle) is the number of standard deviations the observed value is removed from the expected value. A bond length (or angle) with $|Z| > 2$ is considered an outlier worth inspection. RMSZ is the root-mean-square of all Z scores of the bond lengths (or angles).

Mol	Type	Chain	Res	Link	Bond lengths			Bond angles		
					Counts	RMSZ	# Z > 2	Counts	RMSZ	# Z > 2
6	GOL	P	15	-	5,5,5	1.83	2 (40%)	5,5,5	1.73	1 (20%)
4	CTP	B	2001	5	23,29,30	1.54	2 (8%)	30,45,47	1.83	9 (30%)
6	GOL	P	14	-	5,5,5	1.43	1 (20%)	5,5,5	2.01	2 (40%)
7	CPT	T	1004	3	0,2,4	0.00	-	-	-	-
6	GOL	B	357	-	5,5,5	1.10	0	5,5,5	1.09	0

In the following table, the Chirals column lists the number of chiral outliers, the number of chiral centers analysed, the number of these observed in the model and the number defined in the Chemical Component Dictionary. Similar counts are reported in the Torsion and Rings columns. '-' means no outliers of that kind were identified.

Mol	Type	Chain	Res	Link	Chirals	Torsions	Rings
6	GOL	P	15	-	-	2/4/4/4	-
4	CTP	B	2001	5	-	6/19/34/38	0/2/2/2
6	GOL	P	14	-	-	2/4/4/4	-
6	GOL	B	357	-	-	0/4/4/4	-

All (5) bond length outliers are listed below:

Mol	Chain	Res	Type	Atoms	Z	Observed(Å)	Ideal(Å)
4	B	2001	CTP	C6-N1	5.45	1.42	1.35
6	P	15	GOL	C3-C2	2.90	1.63	1.51
6	P	15	GOL	O1-C1	2.38	1.52	1.42
6	P	14	GOL	C3-C2	2.26	1.61	1.51
4	B	2001	CTP	C6-C5	2.23	1.43	1.38

All (12) bond angle outliers are listed below:

Mol	Chain	Res	Type	Atoms	Z	Observed(°)	Ideal(°)
4	B	2001	CTP	C2-N3-C4	5.26	121.67	116.34

Continued on next page...

Continued from previous page...

Mol	Chain	Res	Type	Atoms	Z	Observed(°)	Ideal(°)
4	B	2001	CTP	PB-O3A-PA	-3.21	121.80	132.83
4	B	2001	CTP	C6-N1-C2	-2.75	116.83	121.20
4	B	2001	CTP	O3G-PG-O3B	2.73	113.78	104.64
6	P	14	GOL	C3-C2-C1	2.72	122.28	111.70
4	B	2001	CTP	C5'-C4'-C3'	-2.50	100.04	114.74
6	P	15	GOL	O2-C2-C1	2.40	119.69	109.12
4	B	2001	CTP	C2'-C3'-C4'	2.29	107.54	102.76
4	B	2001	CTP	O4'-C4'-C5'	2.21	116.66	109.37
4	B	2001	CTP	PB-O3B-PG	-2.05	125.78	132.83
6	P	14	GOL	O2-C2-C1	2.04	118.10	109.12
4	B	2001	CTP	O5'-C5'-C4'	2.00	115.89	108.99

There are no chirality outliers.

All (10) torsion outliers are listed below:

Mol	Chain	Res	Type	Atoms
4	B	2001	CTP	C3'-C4'-C5'-O5'
4	B	2001	CTP	O4'-C4'-C5'-O5'
4	B	2001	CTP	C5'-O5'-PA-O1A
6	P	14	GOL	O1-C1-C2-O2
6	P	14	GOL	O2-C2-C3-O3
6	P	15	GOL	O1-C1-C2-O2
6	P	15	GOL	O2-C2-C3-O3
4	B	2001	CTP	PG-O3B-PB-O2B
4	B	2001	CTP	C5'-O5'-PA-O3A
4	B	2001	CTP	PG-O3B-PB-O1B

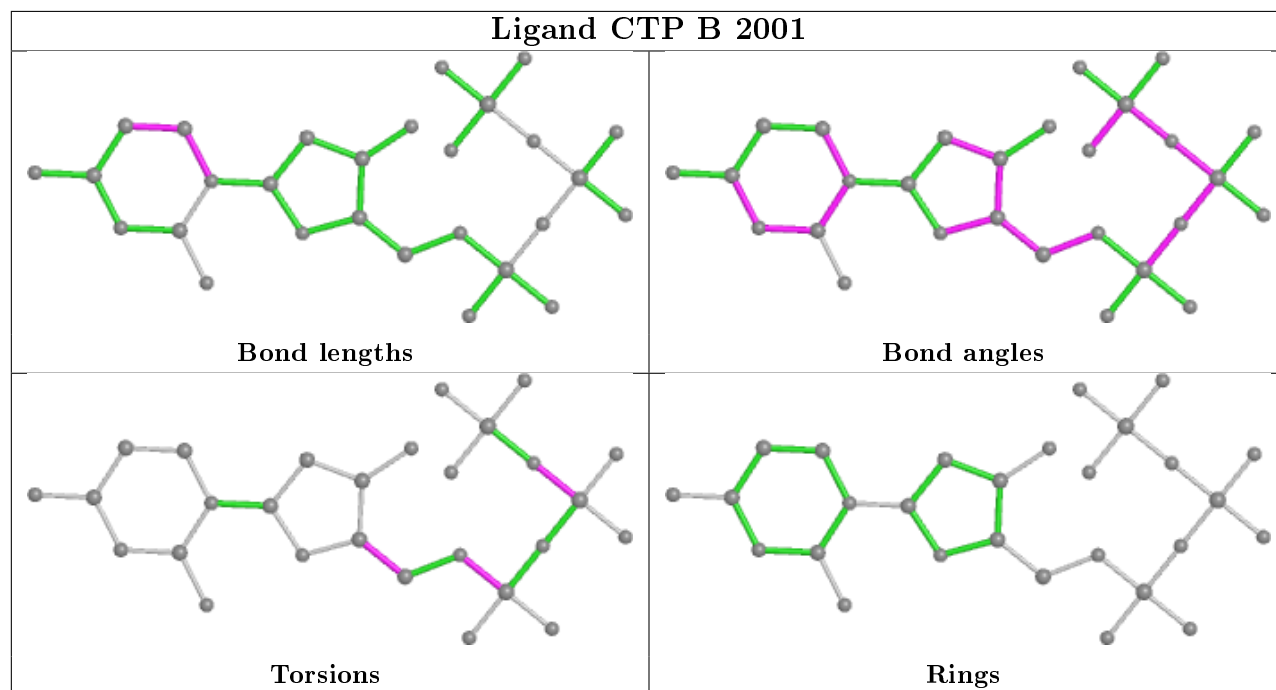
There are no ring outliers.

1 monomer is involved in 6 short contacts:

Mol	Chain	Res	Type	Clashes	Symm-Clashes
4	B	2001	CTP	6	0

The following is a two-dimensional graphical depiction of Mogul quality analysis of bond lengths, bond angles, torsion angles, and ring geometry for all instances of the Ligand of Interest. In addition, ligands with molecular weight > 250 and outliers as shown on the validation Tables will also be included. For torsion angles, if less than 5% of the Mogul distribution of torsion angles is within 10 degrees of the torsion angle in question, then that torsion angle is considered an outlier. Any bond that is central to one or more torsion angles identified as an outlier by Mogul will be highlighted in the graph. For rings, the root-mean-square deviation (RMSD) between the ring in question and similar rings identified by Mogul is calculated over all ring torsion angles. If the average RMSD is greater than 60 degrees and the minimal RMSD between the ring in question and

any Mogul-identified rings is also greater than 60 degrees, then that ring is considered an outlier. The outliers are highlighted in purple. The color gray indicates Mogul did not find sufficient equivalents in the CSD to analyse the geometry.



5.7 Other polymers [i](#)

There are no such residues in this entry.

5.8 Polymer linkage issues [i](#)

There are no chain breaks in this entry.

6 Fit of model and data ⓘ

6.1 Protein, DNA and RNA chains ⓘ

In the following table, the column labelled ‘#RSRZ> 2’ contains the number (and percentage) of RSRZ outliers, followed by percent RSRZ outliers for the chain as percentile scores relative to all X-ray entries and entries of similar resolution. The OWAB column contains the minimum, median, 95th percentile and maximum values of the occupancy-weighted average B-factor per residue. The column labelled ‘Q< 0.9’ lists the number of (and percentage) of residues with an average occupancy less than 0.9.

Mol	Chain	Analysed	<RSRZ>	#RSRZ>2	OWAB(Å ²)	Q<0.9
1	B	341/352 (96%)	0.32	8 (2%) 60 58	27, 55, 91, 109	0
2	P	13/13 (100%)	0.63	0 100 100	71, 74, 85, 87	0
3	T	15/18 (83%)	0.74	1 (6%) 17 13	64, 73, 85, 89	0
All	All	369/383 (96%)	0.35	9 (2%) 59 56	27, 57, 91, 109	0

All (9) RSRZ outliers are listed below:

Mol	Chain	Res	Type	RSRZ
1	B	241	VAL	3.9
1	B	322	ILE	2.6
1	B	290	THR	2.4
1	B	2	ILE	2.4
1	B	24	LYS	2.3
1	B	192	GLU	2.2
1	B	331	ARG	2.1
3	T	4	DG	2.0
1	B	330	ILE	2.0

6.2 Non-standard residues in protein, DNA, RNA chains ⓘ

There are no non-standard protein/DNA/RNA residues in this entry.

6.3 Carbohydrates ⓘ

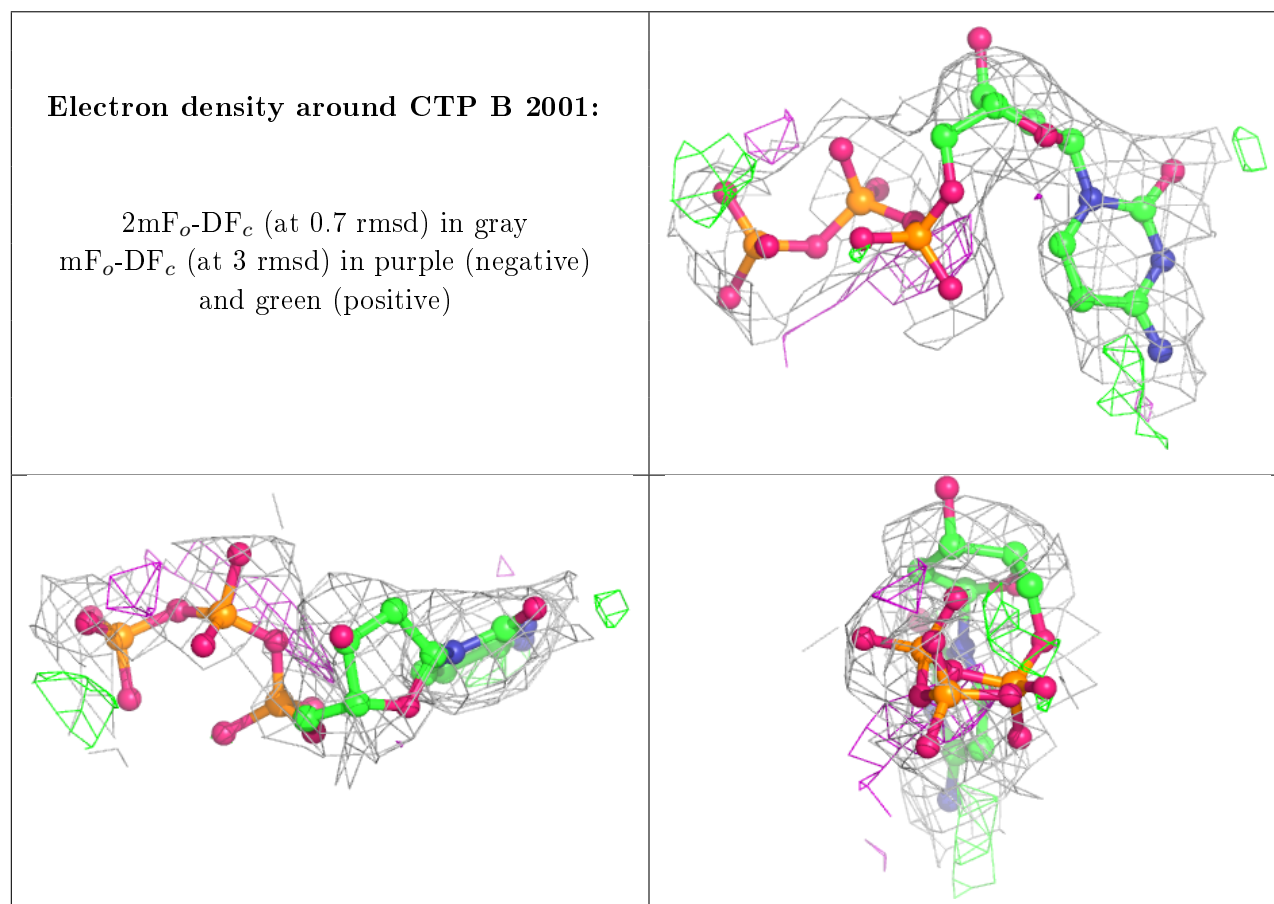
There are no carbohydrates in this entry.

6.4 Ligands ⓘ

In the following table, the Atoms column lists the number of modelled atoms in the group and the number defined in the chemical component dictionary. The B-factors column lists the minimum, median, 95th percentile and maximum values of B factors of atoms in the group. The column labelled 'Q<0.9' lists the number of atoms with occupancy less than 0.9.

Mol	Type	Chain	Res	Atoms	RSCC	RSR	B-factors(Å ²)	Q<0.9
6	GOL	P	14	6/6	0.78	0.28	56,57,57,57	0
6	GOL	P	15	6/6	0.84	0.26	57,57,58,59	0
6	GOL	B	357	6/6	0.85	0.25	57,57,57,57	0
7	CPT	T	1004	3/5	0.87	0.17	90,90,91,99	0
5	CA	B	353	1/1	0.88	0.30	68,68,68,68	0
5	CA	B	356	1/1	0.88	0.14	73,73,73,73	0
4	CTP	B	2001	28/29	0.89	0.23	48,56,68,68	0
5	CA	B	355	1/1	0.95	0.13	74,74,74,74	0
5	CA	B	354	1/1	0.98	0.21	35,35,35,35	0

The following is a graphical depiction of the model fit to experimental electron density of all instances of the Ligand of Interest. In addition, ligands with molecular weight > 250 and outliers as shown on the geometry validation Tables will also be included. Each fit is shown from different orientation to approximate a three-dimensional view.



6.5 Other polymers [i](#)

There are no such residues in this entry.