



wwPDB X-ray Structure Validation Summary Report ⓘ

May 25, 2020 – 05:13 am BST

PDB ID : 5M91
Title : PCE reductive dehalogenase from *S. multivorans* in complex with 2,6-dibromophenol
Authors : Kunze, C.; Bommer, M.; Hagen, W.R.; Uksa, M.; Dobbek, H.; Schubert, T.; Diekert, G.
Deposited on : 2016-10-31
Resolution : 1.72 Å(reported)

This is a wwPDB X-ray Structure Validation Summary Report for a publicly released PDB entry.

We welcome your comments at validation@mail.wwpdb.org

A user guide is available at

<https://www.wwpdb.org/validation/2017/XrayValidationReportHelp>

with specific help available everywhere you see the ⓘ symbol.

The following versions of software and data (see [references ⓘ](#)) were used in the production of this report:

MolProbity : 4.02b-467
Mogul : 1.8.5 (274361), CSD as541be (2020)
Xtriage (Phenix) : 1.13
EDS : 2.11
buster-report : 1.1.7 (2018)
Percentile statistics : 20191225.v01 (using entries in the PDB archive December 25th 2019)
Refmac : 5.8.0158
CCP4 : 7.0.044 (Gargrove)
Ideal geometry (proteins) : Engh & Huber (2001)
Ideal geometry (DNA, RNA) : Parkinson et al. (1996)
Validation Pipeline (wwPDB-VP) : 2.11

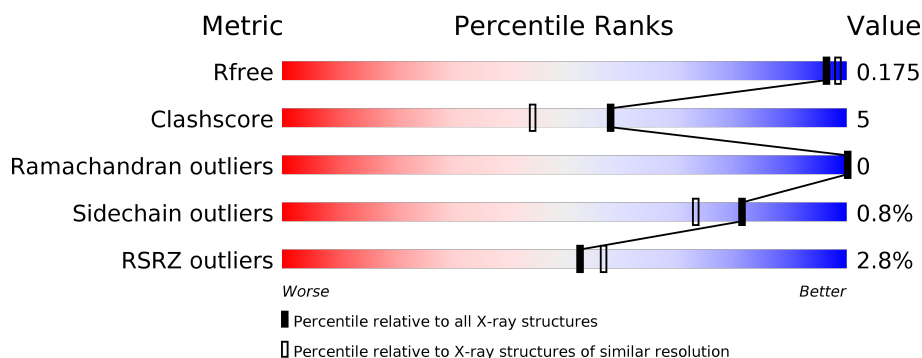
1 Overall quality at a glance

The following experimental techniques were used to determine the structure:

X-RAY DIFFRACTION

The reported resolution of this entry is 1.72 Å.

Percentile scores (ranging between 0-100) for global validation metrics of the entry are shown in the following graphic. The table shows the number of entries on which the scores are based.



Metric	Whole archive (#Entries)	Similar resolution (#Entries, resolution range(Å))
R_{free}	130704	5722 (1.74-1.70)
Clashscore	141614	6152 (1.74-1.70)
Ramachandran outliers	138981	6051 (1.74-1.70)
Sidechain outliers	138945	6051 (1.74-1.70)
RSRZ outliers	127900	5629 (1.74-1.70)

The table below summarises the geometric issues observed across the polymeric chains and their fit to the electron density. The red, orange, yellow and green segments on the lower bar indicate the fraction of residues that contain outliers for ≥ 3 , 2, 1 and 0 types of geometric quality criteria respectively. A grey segment represents the fraction of residues that are not modelled. The numeric value for each fraction is indicated below the corresponding segment, with a dot representing fractions $\leq 5\%$. The upper red bar (where present) indicates the fraction of residues that have poor fit to the electron density. The numeric value is given above the bar.

Mol	Chain	Length	Quality of chain
1	A	464	<div> <div>2%</div> <div> <div></div> <div>88%</div> <div>8%</div> <div>5%</div> </div> </div>
1	B	464	<div> <div>3%</div> <div> <div></div> <div>86%</div> <div>• • 10%</div> </div> </div>

The following table lists non-polymeric compounds, carbohydrate monomers and non-standard residues in protein, DNA, RNA chains that are outliers for geometric or electron-density-fit criteria:

Mol	Type	Chain	Res	Chirality	Geometry	Clashes	Electron density
3	BVQ	A	503	X	-	-	-
3	BVQ	B	503	X	-	-	-
6	94N	A	510	-	-	X	-
6	94N	B	506	-	-	X	-

2 Entry composition [i](#)

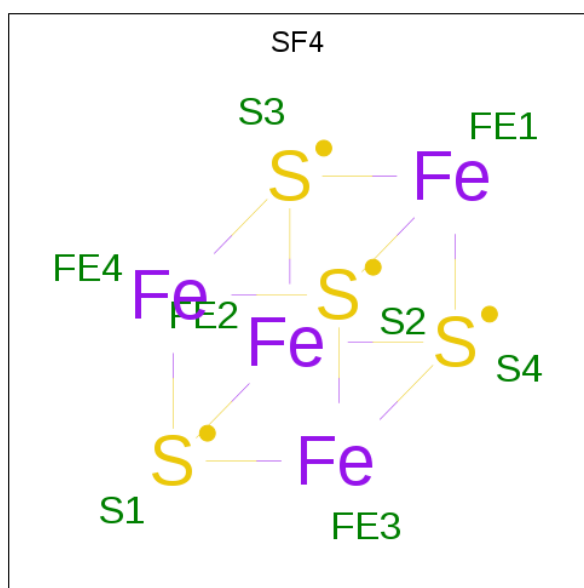
There are 7 unique types of molecules in this entry. The entry contains 7935 atoms, of which 0 are hydrogens and 0 are deuteriums.

In the tables below, the ZeroOcc column contains the number of atoms modelled with zero occupancy, the AltConf column contains the number of residues with at least one atom in alternate conformation and the Trace column contains the number of residues modelled with at most 2 atoms.

- Molecule 1 is a protein called Tetrachloroethene reductive dehalogenase catalytic subunit PceA.

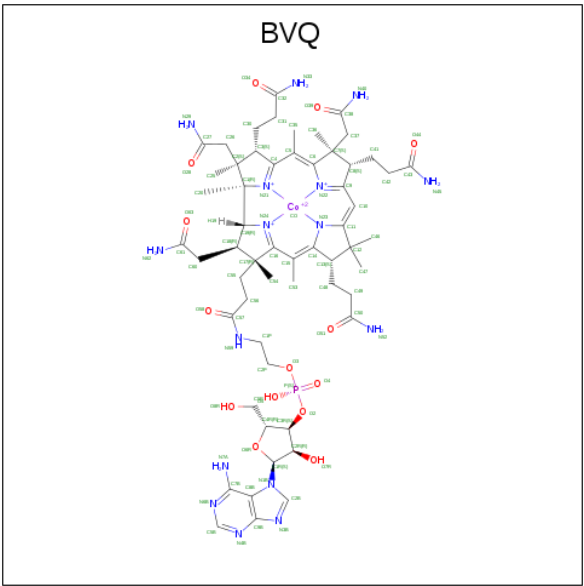
Mol	Chain	Residues	Atoms					ZeroOcc	AltConf	Trace
1	A	443	Total	C	N	O	S	0	5	0
			3543	2250	606	655	32			
1	B	419	Total	C	N	O	S	0	2	0
			3312	2100	565	617	30			

- Molecule 2 is IRON/SULFUR CLUSTER (three-letter code: SF4) (formula: Fe₄S₄).



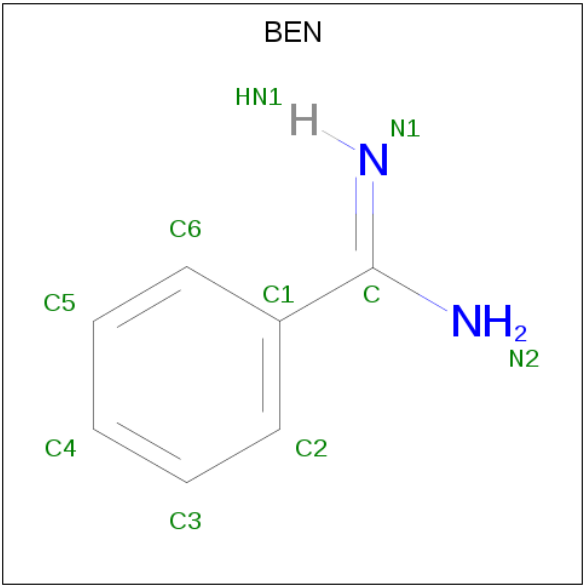
Mol	Chain	Residues	Atoms			ZeroOcc	AltConf
2	A	1	Total	Fe	S	0	0
			8	4	4		
2	A	1	Total	Fe	S	0	0
			8	4	4		
2	B	1	Total	Fe	S	0	0
			8	4	4		
2	B	1	Total	Fe	S	0	0
			8	4	4		

- Molecule 3 is NORPSEUDO-B12 (three-letter code: BVQ) (formula: C₅₇H₈₂CoN₁₆O₁₄P).



Mol	Chain	Residues	Atoms						ZeroOcc	AltConf
3	A	1	Total	C	Co	N	O	P	0	0
			89	57	1	16	14	1		
3	B	1	Total	C	Co	N	O	P	0	0
			89	57	1	16	14	1		

- Molecule 4 is BENZAMIDINE (three-letter code: BEN) (formula: C₇H₈N₂).



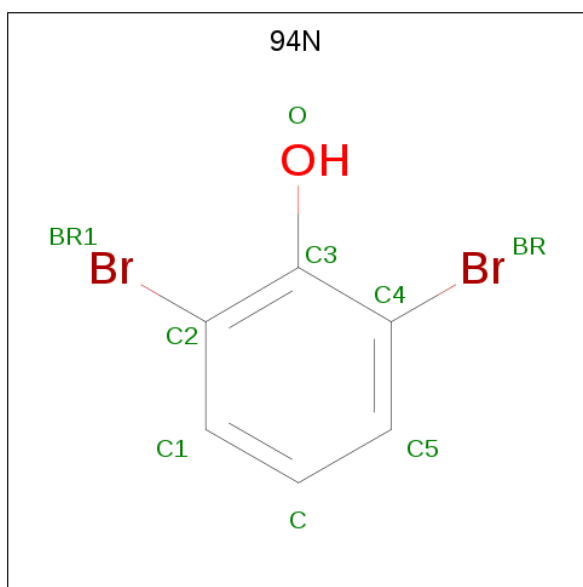
Mol	Chain	Residues	Atoms		ZeroOcc	AltConf
			Total	C N		
4	A	1	9	7 2	0	0

- Molecule 5 is GLYCEROL (three-letter code: GOL) (formula: $C_3H_8O_3$).



Mol	Chain	Residues	Atoms			ZeroOcc	AltConf
5	A	1	Total	C	O	0	0
			6	3	3		
5	A	1	Total	C	O	0	0
			6	3	3		
5	A	1	Total	C	O	0	0
			6	3	3		
5	A	1	Total	C	O	0	0
			6	3	3		
5	A	1	Total	C	O	0	0
			6	3	3		
5	B	1	Total	C	O	0	0
			6	3	3		
5	B	1	Total	C	O	0	0
			6	3	3		

- Molecule 6 is 2,6-bis(bromanyl)phenol (three-letter code: 94N) (formula: $C_6H_4Br_2O$).

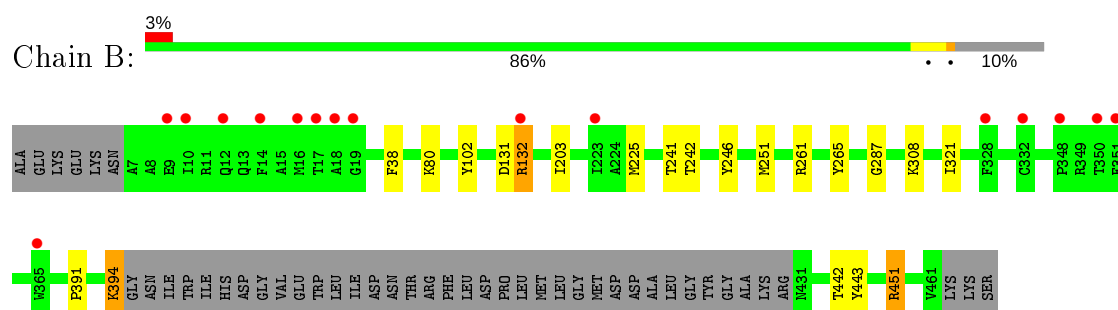


Mol	Chain	Residues	Atoms				ZeroOcc	AltConf
6	A	1	Total	Br	C	O	0	0
			9	2	6	1		
6	B	1	Total	Br	C	O	0	0
			9	2	6	1		

- Molecule 7 is water.

Mol	Chain	Residues	Atoms		ZeroOcc	AltConf
7	A	431	Total	O	0	0
			431	431		
7	B	370	Total	O	0	0
			370	370		

- Molecule 1: Tetrachloroethene reductive dehalogenase catalytic subunit PceA



4 Data and refinement statistics

Property	Value	Source
Space group	P 41	Depositor
Cell constants a, b, c, α , β , γ	73.54Å 73.54Å 184.61Å 90.00° 90.00° 90.00°	Depositor
Resolution (Å)	30.11 – 1.72 47.19 – 1.72	Depositor EDS
% Data completeness (in resolution range)	99.7 (30.11-1.72) 99.9 (47.19-1.72)	Depositor EDS
R_{merge}	0.07	Depositor
R_{sym}	(Not available)	Depositor
$\langle I/\sigma(I) \rangle$ ¹	2.21 (at 1.72Å)	Xtriage
Refinement program	PHENIX (1.10.1_2155: ???)	Depositor
R, R_{free}	0.146 , 0.175 0.146 , 0.175	Depositor DCC
R_{free} test set	5176 reflections (5.00%)	wwPDB-VP
Wilson B-factor (Å ²)	20.9	Xtriage
Anisotropy	0.297	Xtriage
Bulk solvent k_{sol} (e/Å ³), B_{sol} (Å ²)	0.38 , 52.5	EDS
L-test for twinning ²	$\langle L \rangle = 0.48$, $\langle L^2 \rangle = 0.31$	Xtriage
Estimated twinning fraction	0.048 for h,-k,-l	Xtriage
F_o, F_c correlation	0.97	EDS
Total number of atoms	7935	wwPDB-VP
Average B, all atoms (Å ²)	28.0	wwPDB-VP

Xtriage's analysis on translational NCS is as follows: *The largest off-origin peak in the Patterson function is 2.86% of the height of the origin peak. No significant pseudotranslation is detected.*

¹Intensities estimated from amplitudes.

²Theoretical values of $\langle |L| \rangle$, $\langle L^2 \rangle$ for acentric reflections are 0.5, 0.333 respectively for untwinned datasets, and 0.375, 0.2 for perfectly twinned datasets.

5 Model quality [i](#)

5.1 Standard geometry [i](#)

Bond lengths and bond angles in the following residue types are not validated in this section: 94N, GOL, BVQ, BEN, SF4

The Z score for a bond length (or angle) is the number of standard deviations the observed value is removed from the expected value. A bond length (or angle) with $|Z| > 5$ is considered an outlier worth inspection. RMSZ is the root-mean-square of all Z scores of the bond lengths (or angles).

Mol	Chain	Bond lengths		Bond angles	
		RMSZ	$\# Z > 5$	RMSZ	$\# Z > 5$
1	A	0.41	0/3633	0.58	2/4929 (0.0%)
1	B	0.39	0/3396	0.57	2/4610 (0.0%)
All	All	0.40	0/7029	0.58	4/9539 (0.0%)

There are no bond length outliers.

All (4) bond angle outliers are listed below:

Mol	Chain	Res	Type	Atoms	Z	Observed(°)	Ideal(°)
1	B	451	ARG	NE-CZ-NH1	-8.84	115.88	120.30
1	A	451	ARG	NE-CZ-NH1	-8.83	115.88	120.30
1	A	451	ARG	NE-CZ-NH2	6.65	123.62	120.30
1	B	451	ARG	NE-CZ-NH2	5.18	122.89	120.30

There are no chirality outliers.

There are no planarity outliers.

5.2 Too-close contacts [i](#)

In the following table, the Non-H and H(model) columns list the number of non-hydrogen atoms and hydrogen atoms in the chain respectively. The H(added) column lists the number of hydrogen atoms added and optimized by MolProbity. The Clashes column lists the number of clashes within the asymmetric unit, whereas Symm-Clashes lists symmetry related clashes.

Mol	Chain	Non-H	H(model)	H(added)	Clashes	Symm-Clashes
1	A	3543	0	3437	38	0
1	B	3312	0	3206	26	0
2	A	16	0	0	0	0
2	B	16	0	0	0	0
3	A	89	0	82	6	0

Continued on next page...

Continued from previous page...

Mol	Chain	Non-H	H(model)	H(added)	Clashes	Symm-Clashes
3	B	89	0	82	4	0
4	A	9	0	6	0	0
5	A	30	0	39	1	0
5	B	12	0	16	0	0
6	A	9	0	0	4	0
6	B	9	0	0	4	0
7	A	431	0	0	5	0
7	B	370	0	0	4	0
All	All	7935	0	6868	67	0

The all-atom clashscore is defined as the number of clashes found per 1000 atoms (including hydrogen atoms). The all-atom clashscore for this structure is 5.

The worst 5 of 67 close contacts within the same asymmetric unit are listed below, sorted by their clash magnitude.

Atom-1	Atom-2	Interatomic distance (Å)	Clash overlap (Å)
1:B:225:MET:HE3	1:B:242:THR:HA	1.52	0.92
1:A:39:THR:HG22	5:A:505:GOL:H11	1.56	0.85
1:A:334:LYS:NZ	7:A:601:HOH:O	2.14	0.80
1:A:451:ARG:HH12	1:B:451:ARG:NH1	1.80	0.79
3:A:503:BVQ:H36A	3:A:503:BVQ:H35	1.70	0.73

There are no symmetry-related clashes.

5.3 Torsion angles [i](#)

5.3.1 Protein backbone [i](#)

In the following table, the Percentiles column shows the percent Ramachandran outliers of the chain as a percentile score with respect to all X-ray entries followed by that with respect to entries of similar resolution.

The Analysed column shows the number of residues for which the backbone conformation was analysed, and the total number of residues.

Mol	Chain	Analysed	Favoured	Allowed	Outliers	Percentiles	
1	A	444/464 (96%)	434 (98%)	10 (2%)	0	100	100
1	B	417/464 (90%)	409 (98%)	8 (2%)	0	100	100
All	All	861/928 (93%)	843 (98%)	18 (2%)	0	100	100

There are no Ramachandran outliers to report.

5.3.2 Protein sidechains ⓘ

In the following table, the Percentiles column shows the percent sidechain outliers of the chain as a percentile score with respect to all X-ray entries followed by that with respect to entries of similar resolution.

The Analysed column shows the number of residues for which the sidechain conformation was analysed, and the total number of residues.

Mol	Chain	Analysed	Rotameric	Outliers	Percentiles	
1	A	379/389 (97%)	376 (99%)	3 (1%)	81	73
1	B	354/389 (91%)	351 (99%)	3 (1%)	81	73
All	All	733/778 (94%)	727 (99%)	6 (1%)	81	73

5 of 6 residues with a non-rotameric sidechain are listed below:

Mol	Chain	Res	Type
1	A	458	LYS
1	B	394	LYS
1	B	132	ARG
1	A	406	LEU
1	B	308	LYS

Some sidechains can be flipped to improve hydrogen bonding and reduce clashes. All (3) such sidechains are listed below:

Mol	Chain	Res	Type
1	A	184	GLN
1	A	235	ASN
1	A	370	ASN

5.3.3 RNA ⓘ

There are no RNA molecules in this entry.

5.4 Non-standard residues in protein, DNA, RNA chains ⓘ

There are no non-standard protein/DNA/RNA residues in this entry.

5.5 Carbohydrates [i](#)

There are no carbohydrates in this entry.

5.6 Ligand geometry [i](#)

16 ligands are modelled in this entry.

In the following table, the Counts columns list the number of bonds (or angles) for which Mogul statistics could be retrieved, the number of bonds (or angles) that are observed in the model and the number of bonds (or angles) that are defined in the Chemical Component Dictionary. The Link column lists molecule types, if any, to which the group is linked. The Z score for a bond length (or angle) is the number of standard deviations the observed value is removed from the expected value. A bond length (or angle) with $|Z| > 2$ is considered an outlier worth inspection. RMSZ is the root-mean-square of all Z scores of the bond lengths (or angles).

Mol	Type	Chain	Res	Link	Bond lengths			Bond angles		
					Counts	RMSZ	# $ Z > 2$	Counts	RMSZ	# $ Z > 2$
5	GOL	A	508	-	5,5,5	0.36	0	5,5,5	0.27	0
5	GOL	A	506	-	5,5,5	0.31	0	5,5,5	0.55	0
2	SF4	A	502	1	0,12,12	0.00	-	-		
5	GOL	A	509	-	5,5,5	0.37	0	5,5,5	0.38	0
4	BEN	A	504	5	9,9,9	0.98	1 (11%)	7,11,11	2.56	1 (14%)
3	BVQ	B	503	7	77,99,99	0.61	1 (1%)	93,162,162	1.22	11 (11%)
5	GOL	B	505	-	5,5,5	0.34	0	5,5,5	0.42	0
6	94N	A	510	-	9,9,9	0.33	0	12,12,12	0.58	0
5	GOL	A	505	4	5,5,5	0.45	0	5,5,5	0.96	0
2	SF4	B	502	1	0,12,12	0.00	-	-		
3	BVQ	A	503	7	77,99,99	0.62	1 (1%)	93,162,162	1.19	9 (9%)
5	GOL	A	507	-	5,5,5	0.36	0	5,5,5	0.36	0
6	94N	B	506	-	9,9,9	0.30	0	12,12,12	0.60	0
2	SF4	B	501	1	0,12,12	0.00	-	-		
2	SF4	A	501	1	0,12,12	0.00	-	-		
5	GOL	B	504	-	5,5,5	0.33	0	5,5,5	0.49	0

In the following table, the Chirals column lists the number of chiral outliers, the number of chiral centers analysed, the number of these observed in the model and the number defined in the Chemical Component Dictionary. Similar counts are reported in the Torsion and Rings columns. '-' means no outliers of that kind were identified.

Mol	Type	Chain	Res	Link	Chirals	Torsions	Rings
5	GOL	A	506	-	-	0/4/4/4	-
2	SF4	A	502	1	-	-	0/6/5/5
2	SF4	A	501	1	-	-	0/6/5/5

Continued on next page...

Continued from previous page...

Mol	Type	Chain	Res	Link	Chirals	Torsions	Rings
5	GOL	A	509	-	-	4/4/4/4	-
4	BEN	A	504	5	-	0/4/4/4	0/1/1/1
3	BVQ	B	503	7	4/4/35/37	1/49/221/221	0/3/11/11
5	GOL	B	505	-	-	0/4/4/4	-
5	GOL	A	508	-	-	0/4/4/4	-
5	GOL	A	505	4	-	2/4/4/4	-
2	SF4	B	502	1	-	-	0/6/5/5
3	BVQ	A	503	7	4/4/35/37	1/49/221/221	0/3/11/11
5	GOL	A	507	-	-	0/4/4/4	-
6	94N	B	506	-	-	-	0/1/1/1
2	SF4	B	501	1	-	-	0/6/5/5
6	94N	A	510	-	-	-	0/1/1/1
5	GOL	B	504	-	-	4/4/4/4	-

All (3) bond length outliers are listed below:

Mol	Chain	Res	Type	Atoms	Z	Observed(Å)	Ideal(Å)
3	B	503	BVQ	C16-C15	2.75	1.51	1.41
4	A	504	BEN	C1-C	-2.47	1.42	1.47
3	A	503	BVQ	C16-C15	2.21	1.49	1.41

The worst 5 of 21 bond angle outliers are listed below:

Mol	Chain	Res	Type	Atoms	Z	Observed(°)	Ideal(°)
4	A	504	BEN	C1-C-N2	6.38	127.67	118.05
3	B	503	BVQ	C1R-N1B-C8B	6.05	136.07	125.57
3	A	503	BVQ	C1R-N1B-C8B	6.03	136.04	125.57
3	B	503	BVQ	C55-C17-C16	3.21	120.62	109.92
3	B	503	BVQ	C12-C11-C10	-3.03	119.50	124.64

5 of 8 chirality outliers are listed below:

Mol	Chain	Res	Type	Atom
3	B	503	BVQ	N24
3	B	503	BVQ	N23
3	B	503	BVQ	N22
3	B	503	BVQ	N21
3	A	503	BVQ	N24

5 of 12 torsion outliers are listed below:

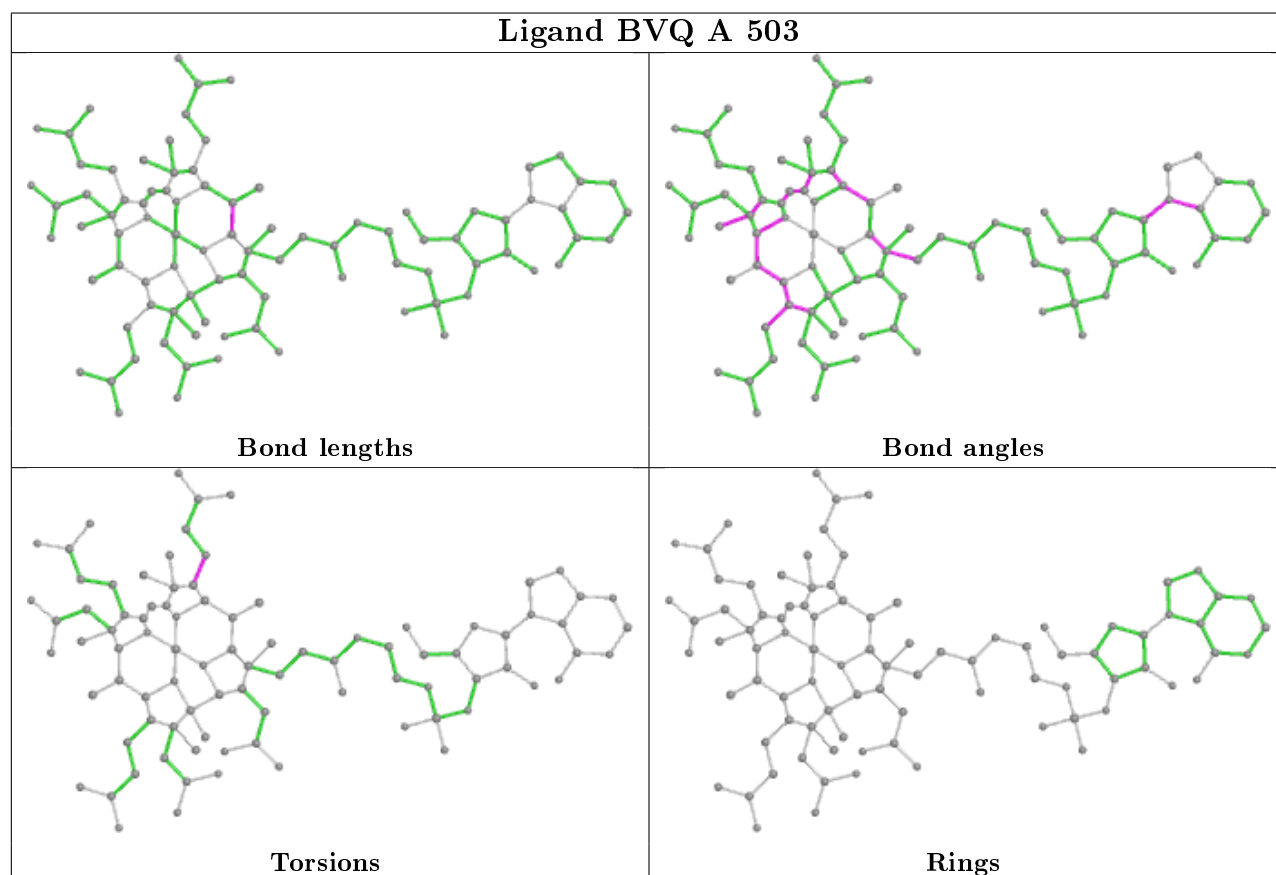
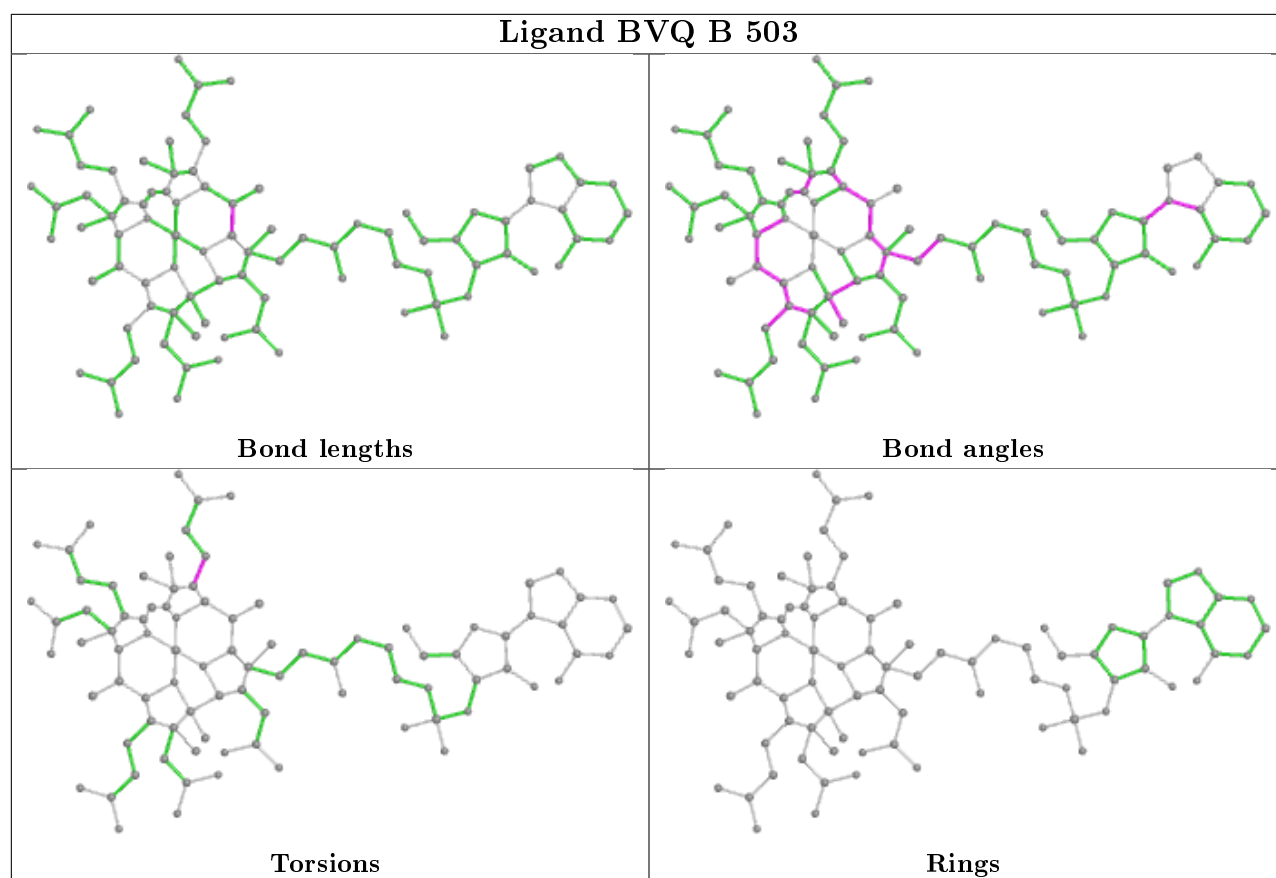
Mol	Chain	Res	Type	Atoms
5	A	509	GOL	O1-C1-C2-C3
5	A	509	GOL	C1-C2-C3-O3
5	A	505	GOL	O1-C1-C2-C3
5	B	504	GOL	C1-C2-C3-O3
5	B	504	GOL	O2-C2-C3-O3

There are no ring outliers.

5 monomers are involved in 19 short contacts:

Mol	Chain	Res	Type	Clashes	Symm-Clashes
3	B	503	BVQ	4	0
6	A	510	94N	4	0
5	A	505	GOL	1	0
3	A	503	BVQ	6	0
6	B	506	94N	4	0

The following is a two-dimensional graphical depiction of Mogul quality analysis of bond lengths, bond angles, torsion angles, and ring geometry for all instances of the Ligand of Interest. In addition, ligands with molecular weight > 250 and outliers as shown on the validation Tables will also be included. For torsion angles, if less than 5% of the Mogul distribution of torsion angles is within 10 degrees of the torsion angle in question, then that torsion angle is considered an outlier. Any bond that is central to one or more torsion angles identified as an outlier by Mogul will be highlighted in the graph. For rings, the root-mean-square deviation (RMSD) between the ring in question and similar rings identified by Mogul is calculated over all ring torsion angles. If the average RMSD is greater than 60 degrees and the minimal RMSD between the ring in question and any Mogul-identified rings is also greater than 60 degrees, then that ring is considered an outlier. The outliers are highlighted in purple. The color gray indicates Mogul did not find sufficient equivalents in the CSD to analyse the geometry.



5.7 Other polymers [i](#)

There are no such residues in this entry.

5.8 Polymer linkage issues [i](#)

There are no chain breaks in this entry.

6 Fit of model and data [i](#)

6.1 Protein, DNA and RNA chains [i](#)

In the following table, the column labelled ‘#RSRZ> 2’ contains the number (and percentage) of RSRZ outliers, followed by percent RSRZ outliers for the chain as percentile scores relative to all X-ray entries and entries of similar resolution. The OWAB column contains the minimum, median, 95th percentile and maximum values of the occupancy-weighted average B-factor per residue. The column labelled ‘Q< 0.9’ lists the number of (and percentage) of residues with an average occupancy less than 0.9.

Mol	Chain	Analysed	<RSRZ>	#RSRZ>2	OWAB(Å ²)	Q<0.9
1	A	443/464 (95%)	-0.22	8 (1%) 68 72	14, 23, 42, 69	0
1	B	419/464 (90%)	-0.01	16 (3%) 40 45	15, 26, 50, 72	0
All	All	862/928 (92%)	-0.12	24 (2%) 53 57	14, 25, 46, 72	0

The worst 5 of 24 RSRZ outliers are listed below:

Mol	Chain	Res	Type	RSRZ
1	B	328	PHE	4.4
1	B	10	ILE	4.2
1	B	14	PHE	3.6
1	B	365	TRP	3.4
1	A	4	GLU	3.2

6.2 Non-standard residues in protein, DNA, RNA chains [i](#)

There are no non-standard protein/DNA/RNA residues in this entry.

6.3 Carbohydrates [i](#)

There are no carbohydrates in this entry.

6.4 Ligands [i](#)

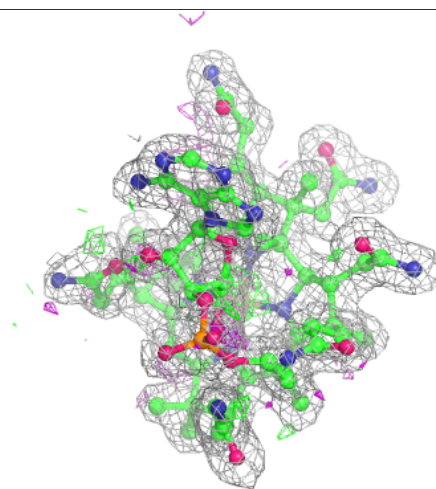
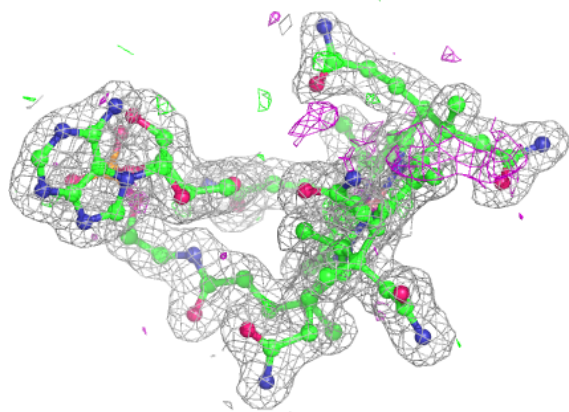
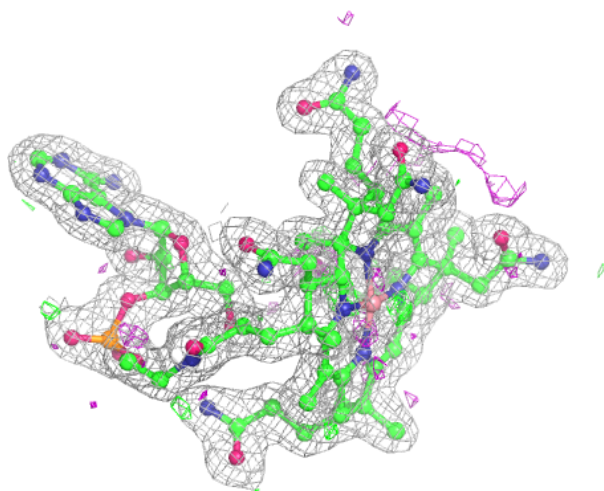
In the following table, the Atoms column lists the number of modelled atoms in the group and the number defined in the chemical component dictionary. The B-factors column lists the minimum, median, 95th percentile and maximum values of B factors of atoms in the group. The column labelled ‘Q< 0.9’ lists the number of atoms with occupancy less than 0.9.

Mol	Type	Chain	Res	Atoms	RSCC	RSR	B-factors(\AA^2)	Q<0.9
5	GOL	A	505	6/6	0.61	0.22	41,54,60,71	0
4	BEN	A	504	9/9	0.81	0.17	41,47,58,67	0
6	94N	A	510	9/9	0.86	0.29	24,31,40,45	9
5	GOL	A	508	6/6	0.87	0.11	44,47,49,52	0
5	GOL	A	509	6/6	0.88	0.12	53,57,60,61	0
6	94N	B	506	9/9	0.88	0.29	25,31,45,45	9
5	GOL	B	504	6/6	0.88	0.21	44,46,60,62	0
5	GOL	B	505	6/6	0.90	0.12	28,33,37,40	0
5	GOL	A	506	6/6	0.94	0.11	26,31,35,35	0
5	GOL	A	507	6/6	0.95	0.09	28,31,38,40	0
2	SF4	B	502	8/8	0.97	0.06	23,25,26,26	0
2	SF4	B	501	8/8	0.97	0.06	28,31,33,37	0
3	BVQ	B	503	89/89	0.97	0.08	15,22,28,49	0
3	BVQ	A	503	89/89	0.98	0.07	12,17,22,35	0
2	SF4	A	501	8/8	0.99	0.05	17,18,18,22	0
2	SF4	A	502	8/8	0.99	0.05	16,18,19,19	0

The following is a graphical depiction of the model fit to experimental electron density of all instances of the Ligand of Interest. In addition, ligands with molecular weight > 250 and outliers as shown on the geometry validation Tables will also be included. Each fit is shown from different orientation to approximate a three-dimensional view.

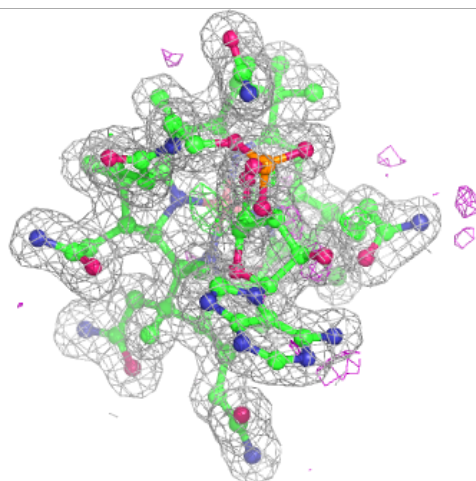
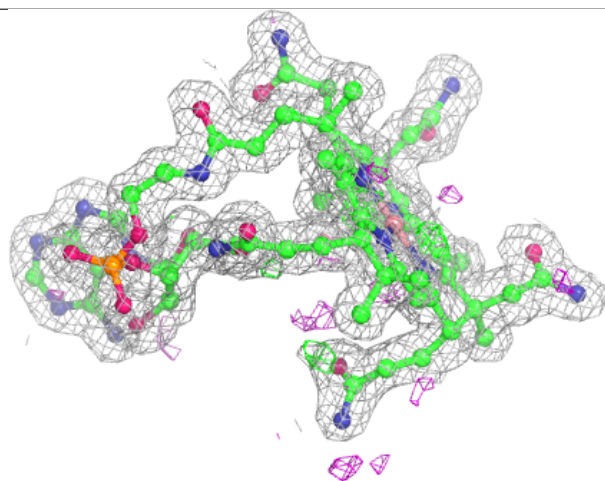
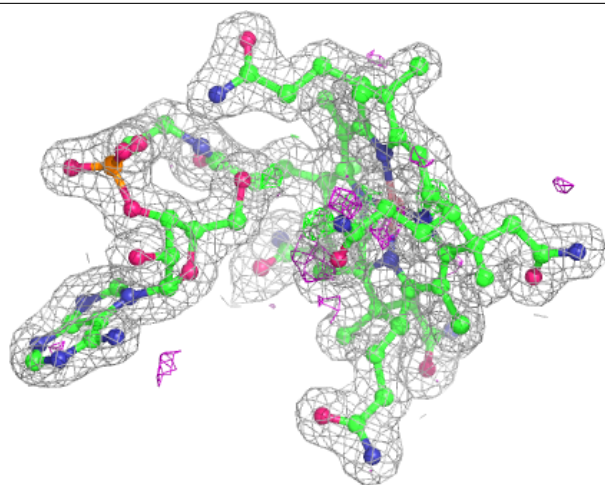
Electron density around BVQ B 503:

$2mF_o-DF_c$ (at 0.7 rmsd) in gray
 mF_o-DF_c (at 3 rmsd) in purple (negative)
and green (positive)



Electron density around BVQ A 503:

$2mF_o-DF_c$ (at 0.7 rmsd) in gray
 mF_o-DF_c (at 3 rmsd) in purple (negative)
and green (positive)



6.5 Other polymers [i](#)

There are no such residues in this entry.