



# wwPDB X-ray Structure Validation Summary Report ⓘ

Aug 10, 2020 – 02:19 AM BST

PDB ID : 5MB1  
Title : STRUCTURE OF THE LECB LECTIN FROM PSEUDOMONAS AERUGINOSA STRAIN PA14 IN COMPLEX WITH 2,4,6-Trimethylphenylsulfonamide-N-methyl-L-fucopyranoside  
Authors : Sommer, R.; Imberty, A.; Titz, A.; Varrot, A.  
Deposited on : 2016-11-07  
Resolution : 1.65 Å(reported)

This is a wwPDB X-ray Structure Validation Summary Report for a publicly released PDB entry.

We welcome your comments at [validation@mail.wwpdb.org](mailto:validation@mail.wwpdb.org)

A user guide is available at

<https://www.wwpdb.org/validation/2017/XrayValidationReportHelp>

with specific help available everywhere you see the ⓘ symbol.

---

The following versions of software and data (see [references ⓘ](#)) were used in the production of this report:

MolProbity	:	4.02b-467
Mogul	:	1.8.5 (274361), CSD as541be (2020)
Xtriage (Phenix)	:	1.13
EDS	:	2.13.1
Percentile statistics	:	20191225.v01 (using entries in the PDB archive December 25th 2019)
Refmac	:	5.8.0158
CCP4	:	7.0.044 (Gargrove)
Ideal geometry (proteins)	:	Engh & Huber (2001)
Ideal geometry (DNA, RNA)	:	Parkinson et al. (1996)
Validation Pipeline (wwPDB-VP)	:	2.13.1

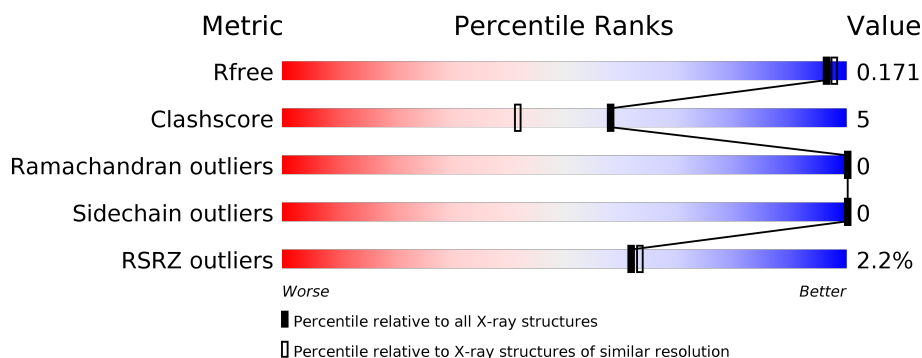
# 1 Overall quality at a glance

The following experimental techniques were used to determine the structure:

## *X-RAY DIFFRACTION*

The reported resolution of this entry is 1.65 Å.

Percentile scores (ranging between 0-100) for global validation metrics of the entry are shown in the following graphic. The table shows the number of entries on which the scores are based.



Metric	Whole archive (#Entries)	Similar resolution (#Entries, resolution range(Å))
$R_{free}$	130704	1827 (1.66-1.66)
Clashscore	141614	1931 (1.66-1.66)
Ramachandran outliers	138981	1891 (1.66-1.66)
Sidechain outliers	138945	1891 (1.66-1.66)
RSRZ outliers	127900	1791 (1.66-1.66)

The table below summarises the geometric issues observed across the polymeric chains and their fit to the electron density. The red, orange, yellow and green segments on the lower bar indicate the fraction of residues that contain outliers for  $\geq 3$ , 2, 1 and 0 types of geometric quality criteria respectively. A grey segment represents the fraction of residues that are not modelled. The numeric value for each fraction is indicated below the corresponding segment, with a dot representing fractions  $\leq 5\%$ . The upper red bar (where present) indicates the fraction of residues that have poor fit to the electron density. The numeric value is given above the bar.

Mol	Chain	Length	Quality of chain
1	A	114	<div> <div>95%</div> <div>5%</div> </div>
1	B	114	<div> <div>2%</div> <div>96%</div> <div>.</div> </div>
1	C	114	<div> <div>5%</div> <div>94%</div> <div>6%</div> </div>
1	D	114	<div> <div>2%</div> <div>89%</div> <div>11%</div> </div>

The following table lists non-polymeric compounds, carbohydrate monomers and non-standard residues in protein, DNA, RNA chains that are outliers for geometric or electron-density-fit crite-

ria:

Mol	Type	Chain	Res	Chirality	Geometry	Clashes	Electron density
3	FUL	D	203	-	-	X	-
4	7KT	D	204	-	-	X	-

## 2 Entry composition

There are 6 unique types of molecules in this entry. The entry contains 4207 atoms, of which 0 are hydrogens and 0 are deuteriums.

In the tables below, the ZeroOcc column contains the number of atoms modelled with zero occupancy, the AltConf column contains the number of residues with at least one atom in alternate conformation and the Trace column contains the number of residues modelled with at most 2 atoms.

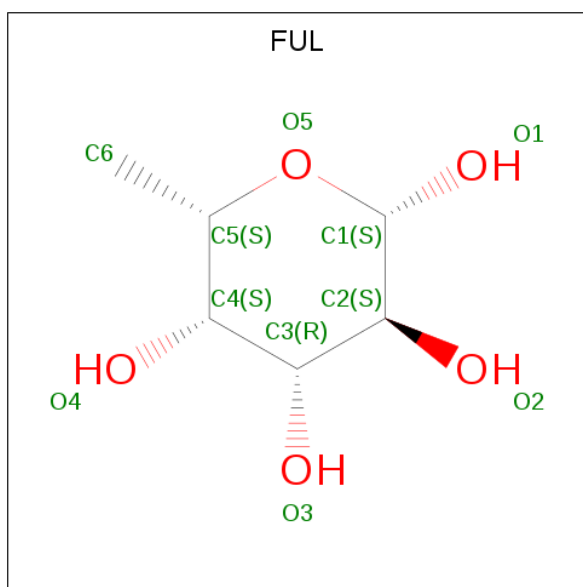
- Molecule 1 is a protein called Fucose-binding lectin PA-IIL.

Mol	Chain	Residues	Atoms				ZeroOcc	AltConf	Trace
1	A	114	Total	C	N	O	0	2	0
			839	519	144	176			
1	B	114	Total	C	N	O	0	5	0
			859	529	148	182			
1	C	114	Total	C	N	O	0	3	0
			838	519	142	177			
1	D	114	Total	C	N	O	0	13	0
			924	568	154	202			

- Molecule 2 is CALCIUM ION (three-letter code: CA) (formula: Ca).

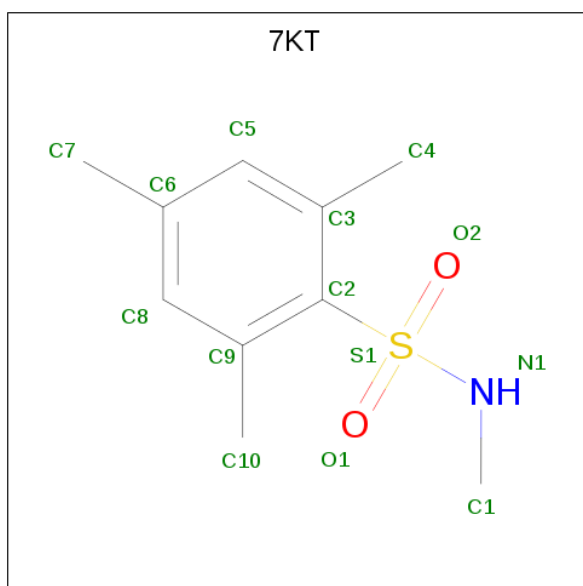
Mol	Chain	Residues	Atoms		ZeroOcc	AltConf
2	B	2	Total	Ca	0	0
			2	2		
2	A	2	Total	Ca	0	0
			2	2		
2	D	2	Total	Ca	0	0
			2	2		
2	C	1	Total	Ca	0	0
			1	1		

- Molecule 3 is beta-L-fucopyranose (three-letter code: FUL) (formula: C<sub>6</sub>H<sub>12</sub>O<sub>5</sub>).



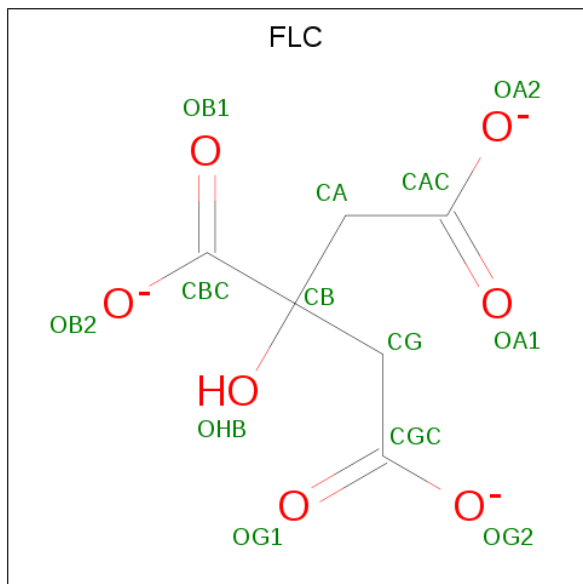
Mol	Chain	Residues	Atoms			ZeroOcc	AltConf
3	A	1	Total	C	O	0	0
			10	6	4		
3	B	1	Total	C	O	0	0
			10	6	4		
3	D	1	Total	C	O	0	0
			10	6	4		

- Molecule 4 is {N},2,4,6-tetramethylbenzenesulfonamide (three-letter code: 7KT) (formula:  $C_{10}H_{15}NO_2S$ ).



Mol	Chain	Residues	Atoms					ZeroOcc	AltConf
4	A	1	Total	C	N	O	S	0	0
			14	10	1	2	1		
4	B	1	Total	C	N	O	S	0	0
			14	10	1	2	1		
4	D	1	Total	C	N	O	S	0	0
			14	10	1	2	1		

- Molecule 5 is CITRATE ANION (three-letter code: FLC) (formula:  $C_6H_5O_7$ ).



Mol	Chain	Residues	Atoms			ZeroOcc	AltConf
5	D	1	Total	C	O	0	0
			13	6	7		

- Molecule 6 is water.

Mol	Chain	Residues	Atoms		ZeroOcc	AltConf
6	A	181	Total	O	0	0
			181	181		
6	B	182	Total	O	0	0
			182	182		
6	C	148	Total	O	0	0
			148	148		
6	D	144	Total	O	0	0
			144	144		

### 3 Residue-property plots [i](#)

These plots are drawn for all protein, RNA, DNA and oligosaccharide chains in the entry. The first graphic for a chain summarises the proportions of the various outlier classes displayed in the second graphic. The second graphic shows the sequence view annotated by issues in geometry and electron density. Residues are color-coded according to the number of geometric quality criteria for which they contain at least one outlier: green = 0, yellow = 1, orange = 2 and red = 3 or more. A red dot above a residue indicates a poor fit to the electron density ( $RSRZ > 2$ ). Stretches of 2 or more consecutive residues without any outlier are shown as a green connector. Residues present in the sample, but not in the model, are shown in grey.

- Molecule 1: Fucose-binding lectin PA-IIL

Chain A:  95% 5%

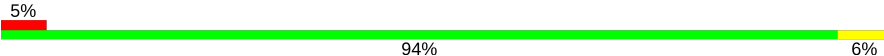


- Molecule 1: Fucose-binding lectin PA-IIL

Chain B:  2% 96% .




- Molecule 1: Fucose-binding lectin PA-IIL

Chain C:  5% 94% 6%



- Molecule 1: Fucose-binding lectin PA-IIL

Chain D:  2% 89% 11%



## 4 Data and refinement statistics

Property	Value	Source
Space group	P 21 21 21	Depositor
Cell constants a, b, c, $\alpha$ , $\beta$ , $\gamma$	52.90 Å 65.25 Å 108.99 Å 90.00° 90.00° 90.00°	Depositor
Resolution (Å)	41.83 – 1.65 41.83 – 1.65	Depositor EDS
% Data completeness (in resolution range)	98.6 (41.83-1.65) 98.6 (41.83-1.65)	Depositor EDS
$R_{merge}$	0.06	Depositor
$R_{sym}$	(Not available)	Depositor
$\langle I/\sigma(I) \rangle$ <sup>1</sup>	4.41 (at 1.65 Å)	Xtriage
Refinement program	REFMAC 5.8.0155	Depositor
R, $R_{free}$	0.132 , 0.155 0.147 , 0.171	Depositor DCC
$R_{free}$ test set	2271 reflections (4.99%)	wwPDB-VP
Wilson B-factor (Å <sup>2</sup> )	7.9	Xtriage
Anisotropy	0.566	Xtriage
Bulk solvent $k_{sol}$ (e/Å <sup>3</sup> ), $B_{sol}$ (Å <sup>2</sup> )	0.34 , 46.4	EDS
L-test for twinning <sup>2</sup>	$\langle  L  \rangle = 0.49$ , $\langle L^2 \rangle = 0.32$	Xtriage
Estimated twinning fraction	No twinning to report.	Xtriage
$F_o, F_c$ correlation	0.96	EDS
Total number of atoms	4207	wwPDB-VP
Average B, all atoms (Å <sup>2</sup> )	10.0	wwPDB-VP

Xtriage's analysis on translational NCS is as follows: *The analyses of the Patterson function reveals a significant off-origin peak that is 29.27 % of the origin peak, indicating pseudo-translational symmetry. The chance of finding a peak of this or larger height randomly in a structure without pseudo-translational symmetry is equal to 1.5959e-03. The detected translational NCS is most likely also responsible for the elevated intensity ratio.*

<sup>1</sup> Intensities estimated from amplitudes.

<sup>2</sup> Theoretical values of  $\langle |L| \rangle$ ,  $\langle L^2 \rangle$  for acentric reflections are 0.5, 0.333 respectively for untwinned datasets, and 0.375, 0.2 for perfectly twinned datasets.



## 5 Model quality [i](#)

### 5.1 Standard geometry [i](#)

Bond lengths and bond angles in the following residue types are not validated in this section: CA, FUL, FLC, 7KT

The Z score for a bond length (or angle) is the number of standard deviations the observed value is removed from the expected value. A bond length (or angle) with  $|Z| > 5$  is considered an outlier worth inspection. RMSZ is the root-mean-square of all Z scores of the bond lengths (or angles).

Mol	Chain	Bond lengths		Bond angles	
		RMSZ	$\# Z  > 5$	RMSZ	$\# Z  > 5$
1	A	0.75	0/848	0.81	1/1158 (0.1%)
1	B	0.89	0/868	0.86	0/1187
1	C	0.82	0/847	0.83	0/1159
1	D	0.81	1/934 (0.1%)	0.80	0/1277
All	All	0.82	1/3497 (0.0%)	0.83	1/4781 (0.0%)

All (1) bond length outliers are listed below:

Mol	Chain	Res	Type	Atoms	Z	Observed(Å)	Ideal(Å)
1	D	52	SER	CB-OG	6.32	1.50	1.42

All (1) bond angle outliers are listed below:

Mol	Chain	Res	Type	Atoms	Z	Observed(°)	Ideal(°)
1	A	102	TYR	CB-CG-CD1	-5.24	117.86	121.00

There are no chirality outliers.

There are no planarity outliers.

### 5.2 Too-close contacts [i](#)

In the following table, the Non-H and H(model) columns list the number of non-hydrogen atoms and hydrogen atoms in the chain respectively. The H(added) column lists the number of hydrogen atoms added and optimized by MolProbity. The Clashes column lists the number of clashes within the asymmetric unit, whereas Symm-Clashes lists symmetry related clashes.

Mol	Chain	Non-H	H(model)	H(added)	Clashes	Symm-Clashes
1	A	839	0	822	4	0
1	B	859	0	836	4	0

*Continued on next page...*

*Continued from previous page...*

Mol	Chain	Non-H	H(model)	H(added)	Clashes	Symm-Clashes
1	C	838	0	812	6	0
1	D	924	0	872	15	0
2	A	2	0	0	0	0
2	B	2	0	0	0	0
2	C	1	0	0	0	0
2	D	2	0	0	0	0
3	A	10	0	7	0	0
3	B	10	0	7	0	0
3	D	10	0	6	6	0
4	A	14	0	0	1	0
4	B	14	0	0	0	0
4	D	14	0	0	7	0
5	D	13	0	5	0	0
6	A	181	0	0	1	0
6	B	182	0	0	1	0
6	C	148	0	0	2	0
6	D	144	0	0	6	0
All	All	4207	0	3367	33	0

The all-atom clashscore is defined as the number of clashes found per 1000 atoms (including hydrogen atoms). The all-atom clashscore for this structure is 5.

The worst 5 of 33 close contacts within the same asymmetric unit are listed below, sorted by their clash magnitude.

Atom-1	Atom-2	Interatomic distance (Å)	Clash overlap (Å)
1:D:97[B]:SER:C	4:D:204:7KT:O1	1.75	1.24
4:D:204:7KT:C5	6:D:413:HOH:O	1.95	1.14
1:A:53[B]:LYS:HE2	6:A:352:HOH:O	1.50	1.10
1:D:98[B]:THR:N	4:D:204:7KT:O1	1.69	1.02
3:D:203:FUL:H5	6:D:342:HOH:O	0.77	0.95

There are no symmetry-related clashes.

## 5.3 Torsion angles [i](#)

### 5.3.1 Protein backbone [i](#)

In the following table, the Percentiles column shows the percent Ramachandran outliers of the chain as a percentile score with respect to all X-ray entries followed by that with respect to entries of similar resolution.

The Analysed column shows the number of residues for which the backbone conformation was analysed, and the total number of residues.

Mol	Chain	Analysed	Favoured	Allowed	Outliers	Percentiles	
1	A	114/114 (100%)	111 (97%)	3 (3%)	0	100	100
1	B	116/114 (102%)	113 (97%)	3 (3%)	0	100	100
1	C	115/114 (101%)	112 (97%)	3 (3%)	0	100	100
1	D	125/114 (110%)	122 (98%)	3 (2%)	0	100	100
All	All	470/456 (103%)	458 (97%)	12 (3%)	0	100	100

There are no Ramachandran outliers to report.

### 5.3.2 Protein sidechains ⓘ

In the following table, the Percentiles column shows the percent sidechain outliers of the chain as a percentile score with respect to all X-ray entries followed by that with respect to entries of similar resolution.

The Analysed column shows the number of residues for which the sidechain conformation was analysed, and the total number of residues.

Mol	Chain	Analysed	Rotameric	Outliers	Percentiles	
1	A	93/91 (102%)	93 (100%)	0	100	100
1	B	95/91 (104%)	95 (100%)	0	100	100
1	C	92/91 (101%)	92 (100%)	0	100	100
1	D	103/91 (113%)	103 (100%)	0	100	100
All	All	383/364 (105%)	383 (100%)	0	100	100

There are no protein residues with a non-rotameric sidechain to report.

Some sidechains can be flipped to improve hydrogen bonding and reduce clashes. There are no such sidechains identified.

### 5.3.3 RNA ⓘ

There are no RNA molecules in this entry.

## 5.4 Non-standard residues in protein, DNA, RNA chains ⓘ

There are no non-standard protein/DNA/RNA residues in this entry.

## 5.5 Carbohydrates [i](#)

There are no monosaccharides in this entry.

## 5.6 Ligand geometry [i](#)

Of 14 ligands modelled in this entry, 7 are monoatomic - leaving 7 for Mogul analysis.

In the following table, the Counts columns list the number of bonds (or angles) for which Mogul statistics could be retrieved, the number of bonds (or angles) that are observed in the model and the number of bonds (or angles) that are defined in the Chemical Component Dictionary. The Link column lists molecule types, if any, to which the group is linked. The Z score for a bond length (or angle) is the number of standard deviations the observed value is removed from the expected value. A bond length (or angle) with  $|Z| > 2$  is considered an outlier worth inspection. RMSZ is the root-mean-square of all Z scores of the bond lengths (or angles).

Mol	Type	Chain	Res	Link	Bond lengths			Bond angles		
					Counts	RMSZ	$\# Z  > 2$	Counts	RMSZ	$\# Z  > 2$
3	FUL	D	203	1,2,4	10,10,11	0.79	0	14,14,16	1.28	3 (21%)
5	FLC	D	205	-	3,12,12	1.70	1 (33%)	3,17,17	0.62	0
4	7KT	D	204	1,3	13,14,14	1.29	1 (7%)	20,21,21	2.81	8 (40%)
3	FUL	B	203	2,4	10,10,11	0.94	0	14,14,16	1.43	2 (14%)
3	FUL	A	203	2,4	10,10,11	0.86	0	14,14,16	1.27	0
4	7KT	B	204	3	13,14,14	1.68	2 (15%)	20,21,21	1.85	5 (25%)
4	7KT	A	204	3	13,14,14	1.21	1 (7%)	20,21,21	1.58	7 (35%)

In the following table, the Chirals column lists the number of chiral outliers, the number of chiral centers analysed, the number of these observed in the model and the number defined in the Chemical Component Dictionary. Similar counts are reported in the Torsion and Rings columns. '-' means no outliers of that kind were identified.

Mol	Type	Chain	Res	Link	Chirals	Torsions	Rings
3	FUL	D	203	1,2,4	-	-	0/1/1/1
5	FLC	D	205	-	-	1/6/16/16	-
4	7KT	D	204	1,3	-	3/9/9/9	0/1/1/1
3	FUL	B	203	2,4	-	-	0/1/1/1
3	FUL	A	203	2,4	-	-	0/1/1/1
4	7KT	B	204	3	-	0/9/9/9	0/1/1/1
4	7KT	A	204	3	-	0/9/9/9	0/1/1/1

All (5) bond length outliers are listed below:

Mol	Chain	Res	Type	Atoms	Z	Observed(Å)	Ideal(Å)
4	B	204	7KT	C1-N1	3.28	1.49	1.46
4	B	204	7KT	O2-S1	2.94	1.46	1.43
5	D	205	FLC	OHB-CB	2.89	1.47	1.43
4	A	204	7KT	C2-S1	-2.71	1.74	1.79
4	D	204	7KT	O2-S1	2.64	1.46	1.43

The worst 5 of 25 bond angle outliers are listed below:

Mol	Chain	Res	Type	Atoms	Z	Observed(°)	Ideal(°)
4	D	204	7KT	O1-S1-O2	-6.60	111.43	119.55
4	D	204	7KT	O1-S1-C2	5.00	116.18	108.74
4	D	204	7KT	C9-C8-C6	-4.74	117.31	122.17
4	B	204	7KT	O1-S1-O2	-4.55	113.95	119.55
4	D	204	7KT	C7-C6-C5	-4.17	114.76	120.94

There are no chirality outliers.

All (4) torsion outliers are listed below:

Mol	Chain	Res	Type	Atoms
4	D	204	7KT	C1-N1-S1-O2
4	D	204	7KT	C1-N1-S1-C2
5	D	205	FLC	CAC-CA-CB-CG
4	D	204	7KT	C3-C2-S1-O1

There are no ring outliers.

3 monomers are involved in 14 short contacts:

Mol	Chain	Res	Type	Clashes	Symm-Clashes
3	D	203	FUL	6	0
4	D	204	7KT	7	0
4	A	204	7KT	1	0

## 5.7 Other polymers [i](#)

There are no such residues in this entry.

## 5.8 Polymer linkage issues [i](#)

There are no chain breaks in this entry.

## 6 Fit of model and data [i](#)

### 6.1 Protein, DNA and RNA chains [i](#)

In the following table, the column labelled ‘#RSRZ> 2’ contains the number (and percentage) of RSRZ outliers, followed by percent RSRZ outliers for the chain as percentile scores relative to all X-ray entries and entries of similar resolution. The OWAB column contains the minimum, median, 95<sup>th</sup> percentile and maximum values of the occupancy-weighted average B-factor per residue. The column labelled ‘Q< 0.9’ lists the number of (and percentage) of residues with an average occupancy less than 0.9.

Mol	Chain	Analysed	<RSRZ>	#RSRZ>2	OWAB(Å <sup>2</sup> )	Q<0.9
1	A	114/114 (100%)	-0.52	0 100 100	4, 6, 11, 20	1 (0%)
1	B	114/114 (100%)	-0.52	2 (1%) 68 71	4, 6, 13, 23	2 (1%)
1	C	114/114 (100%)	-0.24	6 (5%) 26 25	4, 10, 19, 31	4 (3%)
1	D	114/114 (100%)	-0.42	2 (1%) 68 71	4, 7, 14, 21	1 (0%)
All	All	456/456 (100%)	-0.43	10 (2%) 62 63	4, 7, 15, 31	8 (1%)

The worst 5 of 10 RSRZ outliers are listed below:

Mol	Chain	Res	Type	RSRZ
1	C	98	THR	3.7
1	C	100	ASN	3.5
1	C	97	SER	3.3
1	C	101	ASP	3.3
1	B	2[A]	THR	2.6

### 6.2 Non-standard residues in protein, DNA, RNA chains [i](#)

There are no non-standard protein/DNA/RNA residues in this entry.

### 6.3 Carbohydrates [i](#)

There are no monosaccharides in this entry.

### 6.4 Ligands [i](#)

In the following table, the Atoms column lists the number of modelled atoms in the group and the number defined in the chemical component dictionary. The B-factors column lists the minimum, median, 95<sup>th</sup> percentile and maximum values of B factors of atoms in the group. The column labelled ‘Q< 0.9’ lists the number of atoms with occupancy less than 0.9.

Mol	Type	Chain	Res	Atoms	RSCC	RSR	B-factors( $\text{\AA}^2$ )	Q<0.9
4	7KT	D	204	14/14	0.85	0.29	15,18,19,21	14
5	FLC	D	205	13/13	0.88	0.18	17,22,26,28	0
4	7KT	A	204	14/14	0.94	0.14	9,18,22,23	0
3	FUL	D	203	10/11	0.95	0.17	9,12,13,13	10
3	FUL	A	203	10/11	0.97	0.07	6,6,7,8	0
4	7KT	B	204	14/14	0.97	0.13	9,15,19,19	0
3	FUL	B	203	10/11	0.98	0.07	6,7,8,8	0
2	CA	B	202	1/1	1.00	0.02	5,5,5,5	0
2	CA	D	201	1/1	1.00	0.08	10,10,10,10	1
2	CA	A	202	1/1	1.00	0.03	5,5,5,5	0
2	CA	D	202	1/1	1.00	0.04	3,3,3,3	1
2	CA	C	201	1/1	1.00	0.11	20,20,20,20	0
2	CA	B	201	1/1	1.00	0.03	6,6,6,6	0
2	CA	A	201	1/1	1.00	0.03	6,6,6,6	0

## 6.5 Other polymers [i](#)

There are no such residues in this entry.