



Full wwPDB X-ray Structure Validation Report ⓘ

May 16, 2020 – 05:13 pm BST

PDB ID : 3MCV
Title : Structure of PTR1 from Trypanosoma brucei in ternary complex with 2,4-diamino-5-[2-(2,5-dimethoxyphenyl)ethyl]thieno[2,3-d]-pyrimidine and NADP+
Authors : Tulloch, L.B.; Hunter, W.N.
Deposited on : 2010-03-29
Resolution : 1.70 Å(reported)

This is a Full wwPDB X-ray Structure Validation Report for a publicly released PDB entry.

We welcome your comments at validation@mail.wwpdb.org

A user guide is available at

<https://www.wwpdb.org/validation/2017/XrayValidationReportHelp>

with specific help available everywhere you see the ⓘ symbol.

The following versions of software and data (see [references ⓘ](#)) were used in the production of this report:

MolProbity : 4.02b-467
Mogul : 1.8.5 (274361), CSD as541be (2020)
Xtriage (Phenix) : 1.13
EDS : 2.11
buster-report : 1.1.7 (2018)
Percentile statistics : 20191225.v01 (using entries in the PDB archive December 25th 2019)
Refmac : 5.8.0158
CCP4 : 7.0.044 (Gargrove)
Ideal geometry (proteins) : Engh & Huber (2001)
Ideal geometry (DNA, RNA) : Parkinson et al. (1996)
Validation Pipeline (wwPDB-VP) : 2.11

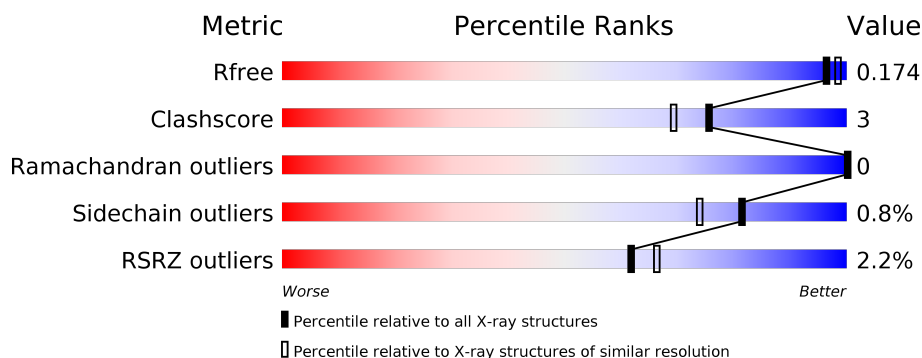
1 Overall quality at a glance

The following experimental techniques were used to determine the structure:

X-RAY DIFFRACTION

The reported resolution of this entry is 1.70 Å.

Percentile scores (ranging between 0-100) for global validation metrics of the entry are shown in the following graphic. The table shows the number of entries on which the scores are based.



Metric	Whole archive (#Entries)	Similar resolution (#Entries, resolution range(Å))
R_{free}	130704	4298 (1.70-1.70)
Clashscore	141614	4695 (1.70-1.70)
Ramachandran outliers	138981	4610 (1.70-1.70)
Sidechain outliers	138945	4610 (1.70-1.70)
RSRZ outliers	127900	4222 (1.70-1.70)

The table below summarises the geometric issues observed across the polymeric chains and their fit to the electron density. The red, orange, yellow and green segments on the lower bar indicate the fraction of residues that contain outliers for ≥ 3 , 2, 1 and 0 types of geometric quality criteria respectively. A grey segment represents the fraction of residues that are not modelled. The numeric value for each fraction is indicated below the corresponding segment, with a dot representing fractions $\leq 5\%$. The upper red bar (where present) indicates the fraction of residues that have poor fit to the electron density. The numeric value is given above the bar.

Mol	Chain	Length	Quality of chain
1	A	288	<div> <div>2%</div> <div>82% 5% 13%</div> </div>
1	B	288	<div> <div>2%</div> <div>83% 13%</div> </div>
1	C	288	<div> <div>2%</div> <div>80% 6% 14%</div> </div>
1	D	288	<div> <div>2%</div> <div>79% 8% 13%</div> </div>

The following table lists non-polymeric compounds, carbohydrate monomers and non-standard residues in protein, DNA, RNA chains that are outliers for geometric or electron-density-fit crite-

ria:

Mol	Type	Chain	Res	Chirality	Geometry	Clashes	Electron density
4	ACT	A	270	-	-	X	-

2 Entry composition

There are 5 unique types of molecules in this entry. The entry contains 8712 atoms, of which 0 are hydrogens and 0 are deuteriums.

In the tables below, the ZeroOcc column contains the number of atoms modelled with zero occupancy, the AltConf column contains the number of residues with at least one atom in alternate conformation and the Trace column contains the number of residues modelled with at most 2 atoms.

- Molecule 1 is a protein called Pteridine reductase.

Mol	Chain	Residues	Atoms					ZeroOcc	AltConf	Trace
1	A	251	Total	C	N	O	S	0	7	0
			1905	1202	335	357	11			
1	B	251	Total	C	N	O	S	0	6	0
			1902	1199	333	358	12			
1	C	248	Total	C	N	O	S	0	9	0
			1890	1194	328	356	12			
1	D	250	Total	C	N	O	S	0	13	0
			1922	1219	333	358	12			

There are 80 discrepancies between the modelled and reference sequences:

Chain	Residue	Modelled	Actual	Comment	Reference
A	-19	MET	-	EXPRESSION TAG	UNP O76290
A	-18	GLY	-	EXPRESSION TAG	UNP O76290
A	-17	SER	-	EXPRESSION TAG	UNP O76290
A	-16	SER	-	EXPRESSION TAG	UNP O76290
A	-15	HIS	-	EXPRESSION TAG	UNP O76290
A	-14	HIS	-	EXPRESSION TAG	UNP O76290
A	-13	HIS	-	EXPRESSION TAG	UNP O76290
A	-12	HIS	-	EXPRESSION TAG	UNP O76290
A	-11	HIS	-	EXPRESSION TAG	UNP O76290
A	-10	HIS	-	EXPRESSION TAG	UNP O76290
A	-9	SER	-	EXPRESSION TAG	UNP O76290
A	-8	SER	-	EXPRESSION TAG	UNP O76290
A	-7	GLY	-	EXPRESSION TAG	UNP O76290
A	-6	LEU	-	EXPRESSION TAG	UNP O76290
A	-5	VAL	-	EXPRESSION TAG	UNP O76290
A	-4	PRO	-	EXPRESSION TAG	UNP O76290
A	-3	ARG	-	EXPRESSION TAG	UNP O76290
A	-2	GLY	-	EXPRESSION TAG	UNP O76290
A	-1	SER	-	EXPRESSION TAG	UNP O76290
A	0	HIS	-	EXPRESSION TAG	UNP O76290
B	-19	MET	-	EXPRESSION TAG	UNP O76290

Continued on next page...

Continued from previous page...

Chain	Residue	Modelled	Actual	Comment	Reference
B	-18	GLY	-	EXPRESSION TAG	UNP O76290
B	-17	SER	-	EXPRESSION TAG	UNP O76290
B	-16	SER	-	EXPRESSION TAG	UNP O76290
B	-15	HIS	-	EXPRESSION TAG	UNP O76290
B	-14	HIS	-	EXPRESSION TAG	UNP O76290
B	-13	HIS	-	EXPRESSION TAG	UNP O76290
B	-12	HIS	-	EXPRESSION TAG	UNP O76290
B	-11	HIS	-	EXPRESSION TAG	UNP O76290
B	-10	HIS	-	EXPRESSION TAG	UNP O76290
B	-9	SER	-	EXPRESSION TAG	UNP O76290
B	-8	SER	-	EXPRESSION TAG	UNP O76290
B	-7	GLY	-	EXPRESSION TAG	UNP O76290
B	-6	LEU	-	EXPRESSION TAG	UNP O76290
B	-5	VAL	-	EXPRESSION TAG	UNP O76290
B	-4	PRO	-	EXPRESSION TAG	UNP O76290
B	-3	ARG	-	EXPRESSION TAG	UNP O76290
B	-2	GLY	-	EXPRESSION TAG	UNP O76290
B	-1	SER	-	EXPRESSION TAG	UNP O76290
B	0	HIS	-	EXPRESSION TAG	UNP O76290
C	-19	MET	-	EXPRESSION TAG	UNP O76290
C	-18	GLY	-	EXPRESSION TAG	UNP O76290
C	-17	SER	-	EXPRESSION TAG	UNP O76290
C	-16	SER	-	EXPRESSION TAG	UNP O76290
C	-15	HIS	-	EXPRESSION TAG	UNP O76290
C	-14	HIS	-	EXPRESSION TAG	UNP O76290
C	-13	HIS	-	EXPRESSION TAG	UNP O76290
C	-12	HIS	-	EXPRESSION TAG	UNP O76290
C	-11	HIS	-	EXPRESSION TAG	UNP O76290
C	-10	HIS	-	EXPRESSION TAG	UNP O76290
C	-9	SER	-	EXPRESSION TAG	UNP O76290
C	-8	SER	-	EXPRESSION TAG	UNP O76290
C	-7	GLY	-	EXPRESSION TAG	UNP O76290
C	-6	LEU	-	EXPRESSION TAG	UNP O76290
C	-5	VAL	-	EXPRESSION TAG	UNP O76290
C	-4	PRO	-	EXPRESSION TAG	UNP O76290
C	-3	ARG	-	EXPRESSION TAG	UNP O76290
C	-2	GLY	-	EXPRESSION TAG	UNP O76290
C	-1	SER	-	EXPRESSION TAG	UNP O76290
C	0	HIS	-	EXPRESSION TAG	UNP O76290
D	-19	MET	-	EXPRESSION TAG	UNP O76290
D	-18	GLY	-	EXPRESSION TAG	UNP O76290
D	-17	SER	-	EXPRESSION TAG	UNP O76290

Continued on next page...

Chain	Residue	Modelled	Actual	Comment	Reference
D	-16	SER	-	EXPRESSION TAG	UNP O76290
D	-15	HIS	-	EXPRESSION TAG	UNP O76290
D	-14	HIS	-	EXPRESSION TAG	UNP O76290
D	-13	HIS	-	EXPRESSION TAG	UNP O76290
D	-12	HIS	-	EXPRESSION TAG	UNP O76290
D	-11	HIS	-	EXPRESSION TAG	UNP O76290
D	-10	HIS	-	EXPRESSION TAG	UNP O76290
D	-9	SER	-	EXPRESSION TAG	UNP O76290
D	-8	SER	-	EXPRESSION TAG	UNP O76290
D	-7	GLY	-	EXPRESSION TAG	UNP O76290
D	-6	LEU	-	EXPRESSION TAG	UNP O76290
D	-5	VAL	-	EXPRESSION TAG	UNP O76290
D	-4	PRO	-	EXPRESSION TAG	UNP O76290
D	-3	ARG	-	EXPRESSION TAG	UNP O76290
D	-2	GLY	-	EXPRESSION TAG	UNP O76290
D	-1	SER	-	EXPRESSION TAG	UNP O76290
D	0	HIS	-	EXPRESSION TAG	UNP O76290

- # NAP
-
- The chemical structure of Naproxen (NAP) is shown, featuring a naphthalene ring system. The structure includes a carboxylic acid group (COOH) and a chiral center (C1) with a hydroxyl group (OH) and a naphthalene ring. The naphthalene ring is substituted with a carboxylic acid group (COOH) and a chiral center (C1) with a hydroxyl group (OH) and a naphthalene ring. The structure is labeled with various atoms and groups, including NH, COOH, OH, and COO⁻.

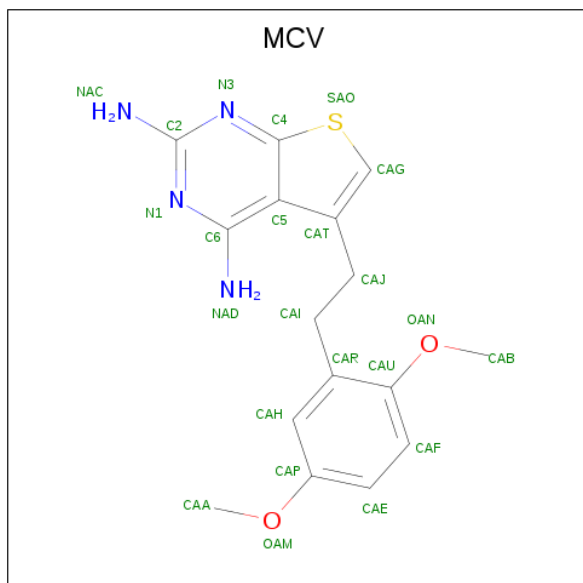
Mol	Chain	Residues	Atoms					ZeroOcc	AltConf
2	A	1	Total 48	C 21	N 7	O 17	P 3	0	0
2	B	1	Total 48	C 21	N 7	O 17	P 3	0	0



Continued from previous page...

Mol	Chain	Residues	Atoms					ZeroOcc	AltConf
2	C	1	Total	C	N	O	P	0	0
			48	21	7	17	3		
2	D	1	Total	C	N	O	P	0	0
			48	21	7	17	3		

- Molecule 3 is 5-[2-(2,5-dimethoxyphenyl)ethyl]thieno[2,3-d]pyrimidine-2,4-diamine (three-letter code: MCV) (formula: C₁₆H₁₈N₄O₂S).



Mol	Chain	Residues	Atoms					ZeroOcc	AltConf
3	A	1	Total	C	N	O	S	0	0
			23	16	4	2	1		
3	B	1	Total	C	N	O	S	0	0
			23	16	4	2	1		
3	C	1	Total	C	N	O	S	0	0
			23	16	4	2	1		
3	D	1	Total	C	N	O	S	0	0
			23	16	4	2	1		

- Molecule 4 is ACETATE ION (three-letter code: ACT) (formula: C₂H₃O₂).



Mol	Chain	Residues	Atoms			ZeroOcc	AltConf
4	A	1	Total	C	O	0	0
			4	2	2		
4	B	1	Total	C	O	0	0
			4	2	2		
4	B	1	Total	C	O	0	0
			4	2	2		
4	D	1	Total	C	O	0	0
			4	2	2		

- Molecule 5 is water.

Mol	Chain	Residues	Atoms		ZeroOcc	AltConf
5	A	223	Total	O	0	1
			223	223		
5	B	221	Total	O	0	5
			221	221		
5	C	156	Total	O	0	0
			156	156		
5	D	193	Total	O	0	0
			193	193		

i

- Molecule 1: Pteridine reductase





4 Data and refinement statistics

Property	Value	Source
Space group	P 1 21 1	Depositor
Cell constants a, b, c, α , β , γ	74.50 Å 89.82 Å 82.26 Å 90.00° 115.49° 90.00°	Depositor
Resolution (Å)	38.98 – 1.70 40.76 – 1.70	Depositor EDS
% Data completeness (in resolution range)	98.3 (38.98-1.70) 98.3 (40.76-1.70)	Depositor EDS
R_{merge}	0.06	Depositor
R_{sym}	0.06	Depositor
$\langle I/\sigma(I) \rangle$ ¹	4.55 (at 1.70 Å)	Xtriage
Refinement program	REFMAC	Depositor
R, R_{free}	0.135 , 0.167 0.145 , 0.174	Depositor DCC
R_{free} test set	5310 reflections (5.03%)	wwPDB-VP
Wilson B-factor (Å ²)	12.0	Xtriage
Anisotropy	0.945	Xtriage
Bulk solvent k_{sol} (e/Å ³), B_{sol} (Å ²)	0.38 , 51.8	EDS
L-test for twinning ²	$\langle L \rangle = 0.49$, $\langle L^2 \rangle = 0.32$	Xtriage
Estimated twinning fraction	0.012 for h,-k,-h-l	Xtriage
F_o, F_c correlation	0.97	EDS
Total number of atoms	8712	wwPDB-VP
Average B, all atoms (Å ²)	13.0	wwPDB-VP

Xtriage's analysis on translational NCS is as follows: *The analyses of the Patterson function reveals a significant off-origin peak that is 25.49 % of the origin peak, indicating pseudo-translational symmetry. The chance of finding a peak of this or larger height randomly in a structure without pseudo-translational symmetry is equal to 3.1388e-03. The detected translational NCS is most likely also responsible for the elevated intensity ratio.*

¹ Intensities estimated from amplitudes.

² Theoretical values of $\langle |L| \rangle$, $\langle L^2 \rangle$ for acentric reflections are 0.5, 0.333 respectively for untwinned datasets, and 0.375, 0.2 for perfectly twinned datasets.

5 Model quality

5.1 Standard geometry

Bond lengths and bond angles in the following residue types are not validated in this section: MCV, NAP, ACT

The Z score for a bond length (or angle) is the number of standard deviations the observed value is removed from the expected value. A bond length (or angle) with $|Z| > 5$ is considered an outlier worth inspection. RMSZ is the root-mean-square of all Z scores of the bond lengths (or angles).

Mol	Chain	Bond lengths		Bond angles	
		RMSZ	$\# Z > 5$	RMSZ	$\# Z > 5$
1	A	0.55	0/1953	0.67	0/2648
1	B	0.56	0/1947	0.66	0/2640
1	C	0.56	0/1944	0.67	1/2638 (0.0%)
1	D	0.53	0/1988	0.65	2/2697 (0.1%)
All	All	0.55	0/7832	0.66	3/10623 (0.0%)

There are no bond length outliers.

All (3) bond angle outliers are listed below:

Mol	Chain	Res	Type	Atoms	Z	Observed(°)	Ideal(°)
1	C	82	ARG	NE-CZ-NH1	-6.06	117.27	120.30
1	D	82	ARG	NE-CZ-NH2	-5.77	117.41	120.30
1	D	82	ARG	NE-CZ-NH1	5.62	123.11	120.30

There are no chirality outliers.

There are no planarity outliers.

5.2 Too-close contacts

In the following table, the Non-H and H(model) columns list the number of non-hydrogen atoms and hydrogen atoms in the chain respectively. The H(added) column lists the number of hydrogen atoms added and optimized by MolProbity. The Clashes column lists the number of clashes within the asymmetric unit, whereas Symm-Clashes lists symmetry related clashes.

Mol	Chain	Non-H	H(model)	H(added)	Clashes	Symm-Clashes
1	A	1905	0	1958	10	0
1	B	1902	0	1948	10	0
1	C	1890	0	1940	14	0
1	D	1922	0	1995	18	0

Continued on next page...

Continued from previous page...

Mol	Chain	Non-H	H(model)	H(added)	Clashes	Symm-Clashes
2	A	48	0	25	0	0
2	B	48	0	25	1	0
2	C	48	0	25	0	0
2	D	48	0	25	0	0
3	A	23	0	18	2	0
3	B	23	0	18	3	0
3	C	23	0	18	3	0
3	D	23	0	18	3	0
4	A	4	0	3	2	0
4	B	8	0	6	0	0
4	D	4	0	3	0	0
5	A	223	0	0	3	0
5	B	221	0	0	3	1
5	C	156	0	0	4	1
5	D	193	0	0	3	0
All	All	8712	0	8025	50	1

The all-atom clashscore is defined as the number of clashes found per 1000 atoms (including hydrogen atoms). The all-atom clashscore for this structure is 3.

All (50) close contacts within the same asymmetric unit are listed below, sorted by their clash magnitude.

Atom-1	Atom-2	Interatomic distance (Å)	Clash overlap (Å)
1:B:211:VAL:O	5:B:517:HOH:O	2.05	0.74
1:C:78[B]:ASN:HD22	1:C:141:ARG:HH21	1.43	0.67
3:B:300:MCV:HNAB	3:B:300:MCV:CAJ	2.17	0.58
3:A:300:MCV:CAJ	3:A:300:MCV:HNAB	2.18	0.56
1:D:78[A]:ASN:ND2	5:D:484:HOH:O	2.25	0.55
1:D:206:VAL:HG12	3:D:300:MCV:CAB	2.38	0.54
1:A:22:LYS:HG2	1:A:242:ILE:HG12	1.91	0.52
1:C:247:GLY:O	1:C:250:GLN:HG2	2.09	0.52
1:C:236:GLN:HE21	1:D:250[B]:GLN:CD	2.14	0.50
3:D:300:MCV:HNAB	3:D:300:MCV:CAJ	2.24	0.50
3:C:300:MCV:CAJ	3:C:300:MCV:HNAB	2.24	0.50
4:A:270:ACT:H1	5:A:388:HOH:O	2.13	0.48
1:A:251:TYR:CE2	1:B:232:ALA:HB2	2.48	0.48
1:A:175[A]:ASN:OD1	5:A:353:HOH:O	2.20	0.48
1:A:222:ARG:HD3	4:A:270:ACT:H3	1.95	0.48
1:B:138:PHE:O	1:B:142[B]:GLN:HG2	2.14	0.48
5:C:345:HOH:O	1:D:250[B]:GLN:HG2	2.13	0.47
1:C:117[B]:GLU:OE2	5:C:322:HOH:O	2.20	0.47

Continued on next page...

Continued from previous page...

Atom-1	Atom-2	Interatomic distance (Å)	Clash overlap (Å)
1:A:9:THR:HA	1:A:33:HIS:HB3	1.96	0.47
1:B:36:ASN:O	5:B:332:HOH:O	2.20	0.47
1:D:130:ALA:HB3	1:D:131:PRO:HD3	1.96	0.47
1:D:206:VAL:HG12	3:D:300:MCV:OAN	2.15	0.47
1:B:15:ILE:HB	2:B:269:NAP:H51N	1.98	0.46
1:A:78:ASN:OD1	1:A:141:ARG:NH2	2.49	0.45
1:A:65:ASN:HA	1:A:69:LEU:HD22	1.98	0.45
1:C:232:ALA:HB2	1:D:251:TYR:CE2	2.52	0.45
1:D:13[A]:LYS:HG2	5:D:328:HOH:O	2.17	0.45
1:B:209:LEU:HD23	3:B:300:MCV:HAI	1.98	0.45
1:C:251:TYR:CE2	1:D:232:ALA:HB2	2.52	0.44
3:B:300:MCV:HAJ	3:B:300:MCV:HNAB	1.82	0.44
1:D:220:LYS:O	1:D:223:ARG:HG3	2.18	0.44
1:D:17:ARG:HG3	1:D:44:LEU:HD22	2.00	0.44
1:B:67[B]:ASN:ND2	5:B:508:HOH:O	2.43	0.43
1:A:102:LEU:O	1:C:136[B]:MET:HG3	2.18	0.43
1:C:230:ARG:NH1	5:C:358:HOH:O	2.51	0.43
5:A:517:HOH:O	1:B:194:PRO:HG3	2.19	0.43
1:C:116[B]:VAL:HG23	5:C:433:HOH:O	2.17	0.43
3:A:300:MCV:HAJ	3:A:300:MCV:HNAB	1.83	0.43
1:C:206[A]:VAL:HG12	3:C:300:MCV:OAN	2.20	0.42
1:D:65:ASN:HA	1:D:69:LEU:HD22	2.00	0.41
1:A:70:PRO:CG	1:C:117[B]:GLU:HG2	2.49	0.41
1:A:232:ALA:HB2	1:B:251:TYR:CE2	2.55	0.41
1:C:232:ALA:HB2	1:D:251:TYR:CD2	2.55	0.41
1:C:206[A]:VAL:HG12	3:C:300:MCV:CAB	2.51	0.41
1:C:17:ARG:HG3	1:C:44:LEU:HD22	2.03	0.41
1:D:9:THR:HA	1:D:33:HIS:HB3	2.03	0.41
1:D:78[B]:ASN:HD22	1:D:141:ARG:HH12	1.68	0.41
1:D:175[A]:ASN:OD1	5:D:371:HOH:O	2.22	0.40
1:B:102:LEU:O	1:D:136[B]:MET:HG3	2.21	0.40

All (1) symmetry-related close contacts are listed below. The label for Atom-2 includes the symmetry operator and encoded unit-cell translations to be applied.

Atom-1	Atom-2	Interatomic distance (Å)	Clash overlap (Å)
5:B:477:HOH:O	5:C:415:HOH:O[1_454]	2.19	0.01

5.3 Torsion angles [i](#)

5.3.1 Protein backbone [i](#)

In the following table, the Percentiles column shows the percent Ramachandran outliers of the chain as a percentile score with respect to all X-ray entries followed by that with respect to entries of similar resolution.

The Analysed column shows the number of residues for which the backbone conformation was analysed, and the total number of residues.

Mol	Chain	Analysed	Favoured	Allowed	Outliers	Percentiles	
1	A	252/288 (88%)	243 (96%)	9 (4%)	0	100	100
1	B	251/288 (87%)	242 (96%)	9 (4%)	0	100	100
1	C	251/288 (87%)	242 (96%)	9 (4%)	0	100	100
1	D	257/288 (89%)	248 (96%)	9 (4%)	0	100	100
All	All	1011/1152 (88%)	975 (96%)	36 (4%)	0	100	100

There are no Ramachandran outliers to report.

5.3.2 Protein sidechains [i](#)

In the following table, the Percentiles column shows the percent sidechain outliers of the chain as a percentile score with respect to all X-ray entries followed by that with respect to entries of similar resolution.

The Analysed column shows the number of residues for which the sidechain conformation was analysed, and the total number of residues.

Mol	Chain	Analysed	Rotameric	Outliers	Percentiles	
1	A	206/231 (89%)	205 (100%)	1 (0%)	88	83
1	B	206/231 (89%)	204 (99%)	2 (1%)	76	67
1	C	206/231 (89%)	203 (98%)	3 (2%)	65	51
1	D	211/231 (91%)	210 (100%)	1 (0%)	88	83
All	All	829/924 (90%)	822 (99%)	7 (1%)	81	74

All (7) residues with a non-rotameric sidechain are listed below:

Mol	Chain	Res	Type
1	A	50	LYS
1	B	67[A]	ASN

Continued on next page...

Continued from previous page...

Mol	Chain	Res	Type
1	B	67[B]	ASN
1	C	141	ARG
1	C	216	GLU
1	C	223	ARG
1	D	53	SER

Some sidechains can be flipped to improve hydrogen bonding and reduce clashes. All (6) such sidechains are listed below:

Mol	Chain	Res	Type
1	A	166	GLN
1	A	250	GLN
1	B	166	GLN
1	C	186	GLN
1	D	67	ASN
1	D	166	GLN

5.3.3 RNA [i](#)

There are no RNA molecules in this entry.

5.4 Non-standard residues in protein, DNA, RNA chains [i](#)

There are no non-standard protein/DNA/RNA residues in this entry.

5.5 Carbohydrates [i](#)

There are no carbohydrates in this entry.

5.6 Ligand geometry [i](#)

12 ligands are modelled in this entry.

In the following table, the Counts columns list the number of bonds (or angles) for which Mogul statistics could be retrieved, the number of bonds (or angles) that are observed in the model and the number of bonds (or angles) that are defined in the Chemical Component Dictionary. The Link column lists molecule types, if any, to which the group is linked. The Z score for a bond length (or angle) is the number of standard deviations the observed value is removed from the expected value. A bond length (or angle) with $|Z| > 2$ is considered an outlier worth inspection. RMSZ is the root-mean-square of all Z scores of the bond lengths (or angles).

Mol	Type	Chain	Res	Link	Bond lengths			Bond angles		
					Counts	RMSZ	# Z > 2	Counts	RMSZ	# Z > 2
4	ACT	D	270	-	1,3,3	1.00	0	0,3,3	0.00	-
2	NAP	C	269	-	45,52,52	1.40	3 (6%)	56,80,80	1.51	8 (14%)
2	NAP	A	269	-	45,52,52	1.57	5 (11%)	56,80,80	1.31	5 (8%)
2	NAP	D	269	-	45,52,52	1.50	3 (6%)	56,80,80	1.45	6 (10%)
2	NAP	B	269	-	45,52,52	1.39	6 (13%)	56,80,80	1.37	6 (10%)
3	MCV	D	300	-	24,25,25	0.89	1 (4%)	27,35,35	1.97	4 (14%)
4	ACT	B	271	-	1,3,3	2.38	1 (100%)	0,3,3	0.00	-
3	MCV	C	300	-	24,25,25	0.92	1 (4%)	27,35,35	2.04	7 (25%)
3	MCV	A	300	-	24,25,25	0.98	2 (8%)	27,35,35	1.73	5 (18%)
3	MCV	B	300	-	24,25,25	0.93	1 (4%)	27,35,35	2.10	7 (25%)
4	ACT	A	270	-	1,3,3	0.91	0	0,3,3	0.00	-
4	ACT	B	270	-	1,3,3	1.24	0	0,3,3	0.00	-

In the following table, the Chirals column lists the number of chiral outliers, the number of chiral centers analysed, the number of these observed in the model and the number defined in the Chemical Component Dictionary. Similar counts are reported in the Torsion and Rings columns. '-' means no outliers of that kind were identified.

Mol	Type	Chain	Res	Link	Chirals	Torsions	Rings
2	NAP	C	269	-	-	0/31/67/67	0/5/5/5
2	NAP	A	269	-	-	0/31/67/67	0/5/5/5
2	NAP	D	269	-	-	0/31/67/67	0/5/5/5
2	NAP	B	269	-	-	0/31/67/67	0/5/5/5
3	MCV	D	300	-	-	3/9/9/9	0/3/3/3
3	MCV	C	300	-	-	3/9/9/9	0/3/3/3
3	MCV	A	300	-	-	3/9/9/9	0/3/3/3
3	MCV	B	300	-	-	3/9/9/9	0/3/3/3

All (23) bond length outliers are listed below:

Mol	Chain	Res	Type	Atoms	Z	Observed(Å)	Ideal(Å)
2	D	269	NAP	O7N-C7N	7.53	1.38	1.24
2	A	269	NAP	O7N-C7N	7.33	1.38	1.24
2	C	269	NAP	O7N-C7N	6.32	1.36	1.24
2	B	269	NAP	O7N-C7N	5.83	1.35	1.24
2	C	269	NAP	C2A-N3A	3.97	1.38	1.32
2	B	269	NAP	C2A-N3A	3.67	1.38	1.32
2	A	269	NAP	C2A-N3A	3.65	1.38	1.32
2	D	269	NAP	C2A-N3A	3.20	1.37	1.32

Continued on next page...

Continued from previous page...

Mol	Chain	Res	Type	Atoms	Z	Observed(Å)	Ideal(Å)
3	C	300	MCV	CAG-CAT	-3.07	1.35	1.37
2	A	269	NAP	C2A-N1A	2.91	1.39	1.33
2	A	269	NAP	C2N-N1N	2.80	1.38	1.35
2	C	269	NAP	C2A-N1A	2.71	1.39	1.33
3	B	300	MCV	CAG-SAO	2.64	1.74	1.70
3	A	300	MCV	CAG-SAO	2.60	1.74	1.70
2	B	269	NAP	C2A-N1A	2.57	1.38	1.33
3	D	300	MCV	CAG-SAO	2.53	1.74	1.70
2	B	269	NAP	C2N-N1N	2.49	1.38	1.35
2	D	269	NAP	C2A-N1A	2.46	1.38	1.33
3	A	300	MCV	CAG-CAT	-2.44	1.35	1.37
4	B	271	ACT	CH3-C	2.38	1.51	1.48
2	A	269	NAP	P2B-O2B	2.35	1.63	1.59
2	B	269	NAP	O4B-C4B	-2.05	1.40	1.45
2	B	269	NAP	O4D-C1D	2.02	1.43	1.41

All (48) bond angle outliers are listed below:

Mol	Chain	Res	Type	Atoms	Z	Observed(°)	Ideal(°)
2	A	269	NAP	N3A-C2A-N1A	-5.77	119.66	128.68
3	B	300	MCV	N3-C2-N1	-5.53	119.84	127.22
2	D	269	NAP	N3A-C2A-N1A	-5.48	120.11	128.68
2	C	269	NAP	N3A-C2A-N1A	-5.26	120.46	128.68
2	D	269	NAP	C3N-C7N-N7N	5.20	123.99	117.75
3	C	300	MCV	CAG-SAO-C4	5.07	97.24	91.12
3	C	300	MCV	N3-C2-N1	-5.02	120.53	127.22
3	D	300	MCV	N3-C2-N1	-4.83	120.78	127.22
2	B	269	NAP	C3N-C7N-N7N	4.58	123.25	117.75
3	D	300	MCV	CAG-SAO-C4	4.54	96.60	91.12
3	D	300	MCV	C2-N3-C4	4.38	120.36	115.36
2	B	269	NAP	O7N-C7N-C3N	-4.34	114.44	119.63
2	B	269	NAP	N3A-C2A-N1A	-4.30	121.95	128.68
3	B	300	MCV	CAG-SAO-C4	4.15	96.13	91.12
3	B	300	MCV	C2-N3-C4	4.14	120.08	115.36
3	B	300	MCV	NAC-C2-N1	4.13	123.68	117.25
2	C	269	NAP	C3N-C7N-N7N	4.11	122.68	117.75
3	A	300	MCV	N3-C2-N1	-4.07	121.79	127.22
2	C	269	NAP	O7N-C7N-C3N	-3.98	114.87	119.63
3	A	300	MCV	CAG-SAO-C4	3.96	95.89	91.12
3	D	300	MCV	CAT-CAG-SAO	-3.95	108.05	112.26
3	C	300	MCV	CAT-CAG-SAO	-3.78	108.23	112.26
2	C	269	NAP	C3N-C2N-N1N	-3.48	117.02	120.43

Continued on next page...

Continued from previous page...

Mol	Chain	Res	Type	Atoms	Z	Observed(°)	Ideal(°)
3	A	300	MCV	C2-N3-C4	3.44	119.29	115.36
3	C	300	MCV	C2-N3-C4	3.43	119.27	115.36
3	A	300	MCV	CAT-CAG-SAO	-3.30	108.74	112.26
2	D	269	NAP	C1B-N9A-C4A	-3.27	120.90	126.64
2	D	269	NAP	O7N-C7N-C3N	-2.97	116.08	119.63
2	C	269	NAP	C1B-N9A-C4A	-2.92	121.51	126.64
3	A	300	MCV	NAC-C2-N1	2.92	121.79	117.25
3	B	300	MCV	CAT-CAG-SAO	-2.87	109.21	112.26
2	A	269	NAP	C3N-C7N-N7N	2.81	121.12	117.75
2	C	269	NAP	C2A-N1A-C6A	2.62	123.24	118.75
2	A	269	NAP	C1B-N9A-C4A	-2.54	122.19	126.64
2	D	269	NAP	C2A-N1A-C6A	2.51	123.04	118.75
3	C	300	MCV	NAC-C2-N1	2.48	121.11	117.25
2	A	269	NAP	O7N-C7N-C3N	-2.48	116.67	119.63
2	B	269	NAP	C3N-C2N-N1N	-2.40	118.08	120.43
3	B	300	MCV	C2-N1-C6	2.39	123.55	116.72
3	C	300	MCV	CAB-OAN-CAU	-2.30	114.06	117.53
2	C	269	NAP	C5A-C6A-N6A	2.26	123.79	120.35
2	A	269	NAP	C2N-C3N-C4N	2.21	120.76	118.26
2	C	269	NAP	C2N-C3N-C4N	2.18	120.73	118.26
3	C	300	MCV	C2-N1-C6	2.06	122.59	116.72
2	D	269	NAP	O2N-PN-O1N	2.04	122.31	112.24
2	B	269	NAP	C5A-C6A-N6A	2.02	123.42	120.35
3	B	300	MCV	C5-C6-N1	-2.01	117.49	122.73
2	B	269	NAP	C2N-C3N-C4N	2.01	120.53	118.26

There are no chirality outliers.

All (12) torsion outliers are listed below:

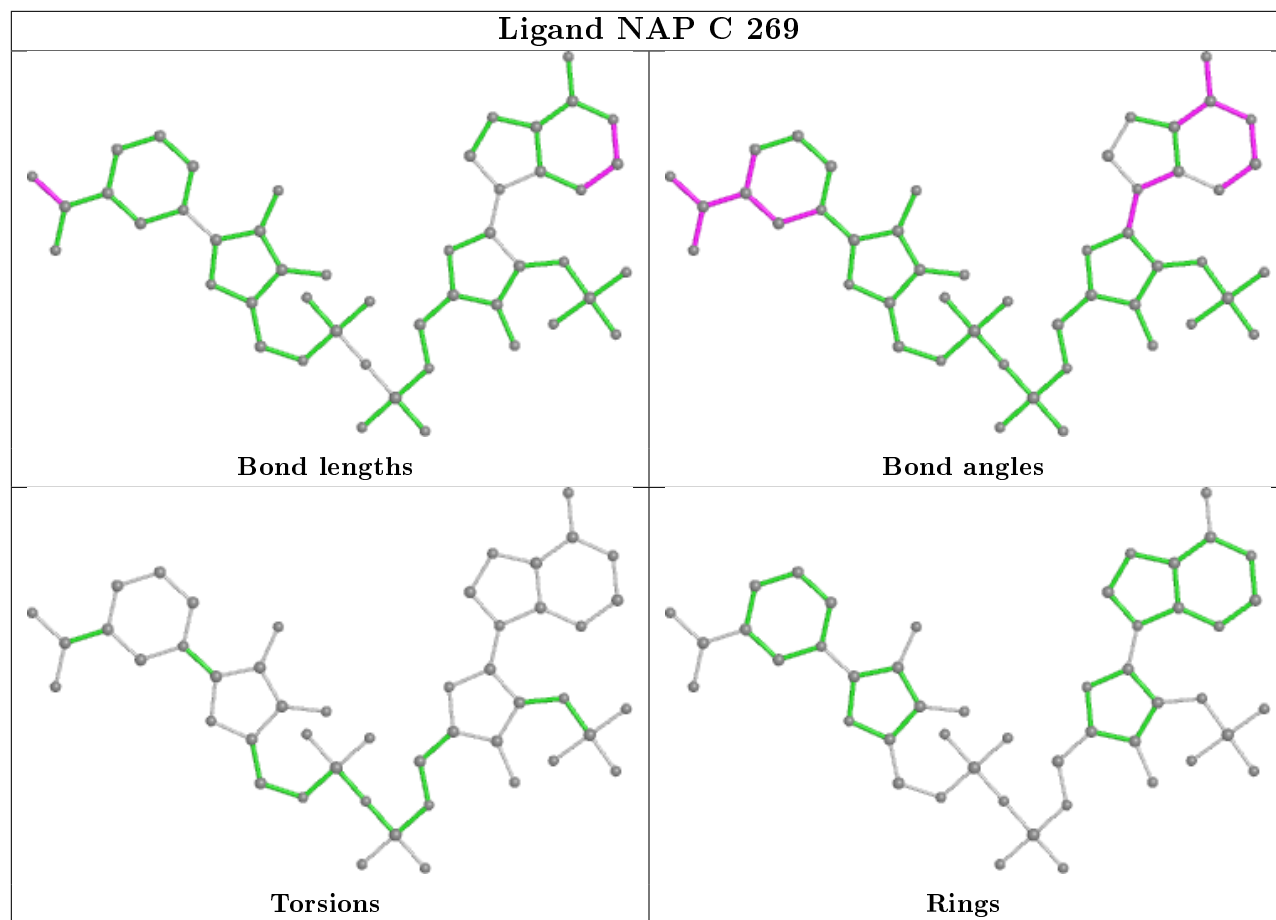
Mol	Chain	Res	Type	Atoms
3	A	300	MCV	CAJ-CAI-CAR-CAH
3	C	300	MCV	CAJ-CAI-CAR-CAU
3	A	300	MCV	CAJ-CAI-CAR-CAU
3	C	300	MCV	CAJ-CAI-CAR-CAH
3	D	300	MCV	CAJ-CAI-CAR-CAH
3	D	300	MCV	CAJ-CAI-CAR-CAU
3	B	300	MCV	CAJ-CAI-CAR-CAU
3	A	300	MCV	CAR-CAI-CAJ-CAT
3	B	300	MCV	CAR-CAI-CAJ-CAT
3	B	300	MCV	CAJ-CAI-CAR-CAH
3	D	300	MCV	CAR-CAI-CAJ-CAT
3	C	300	MCV	CAR-CAI-CAJ-CAT

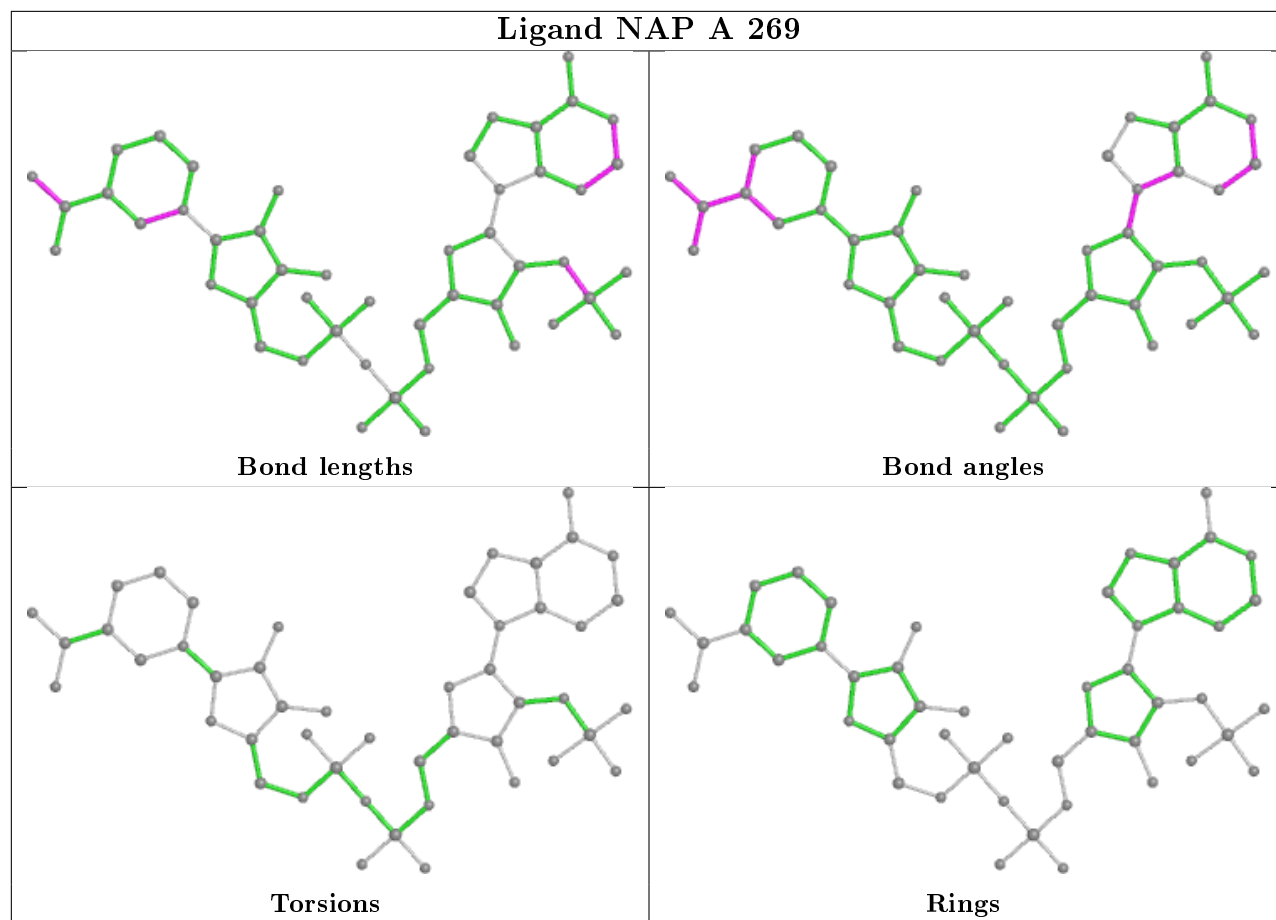
There are no ring outliers.

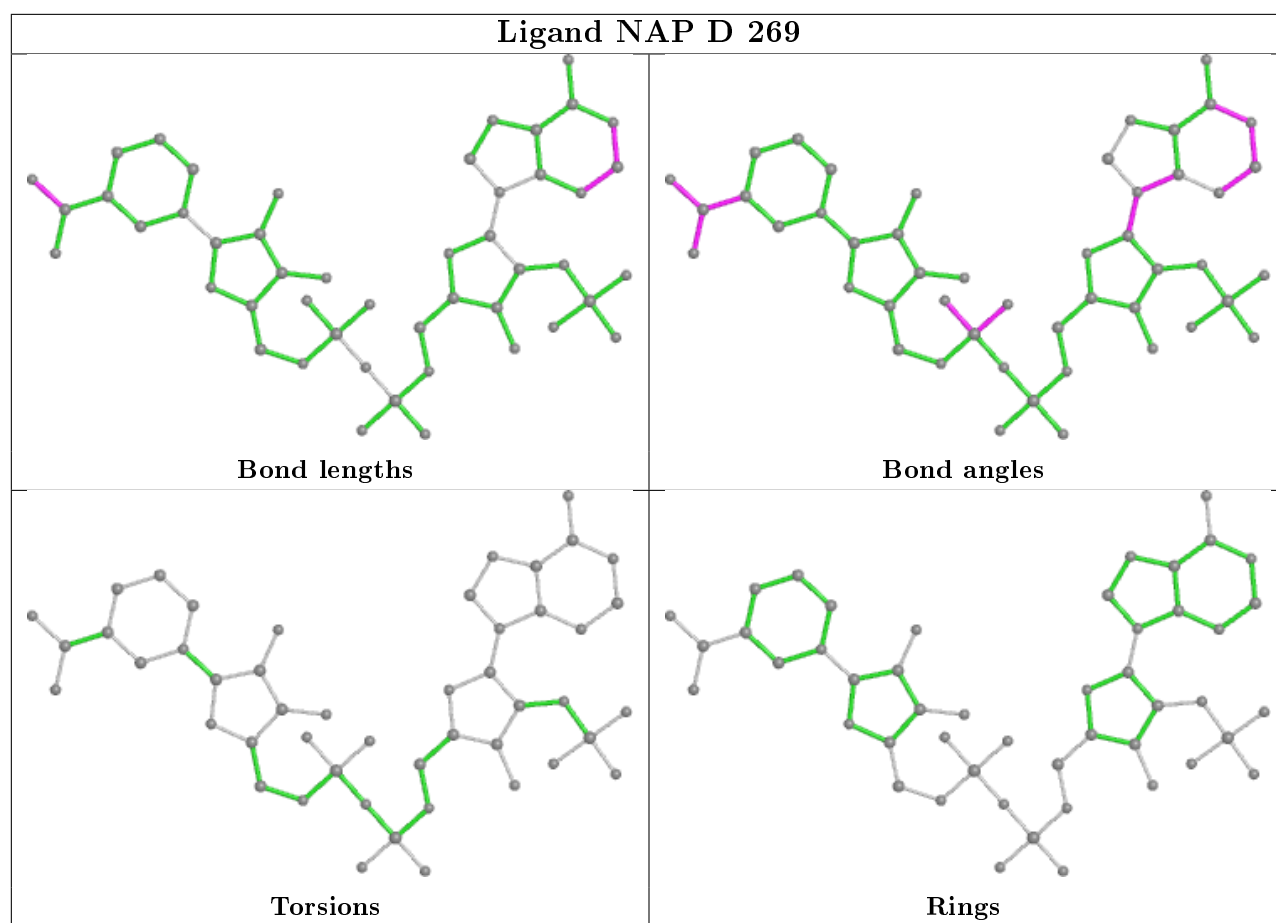
6 monomers are involved in 14 short contacts:

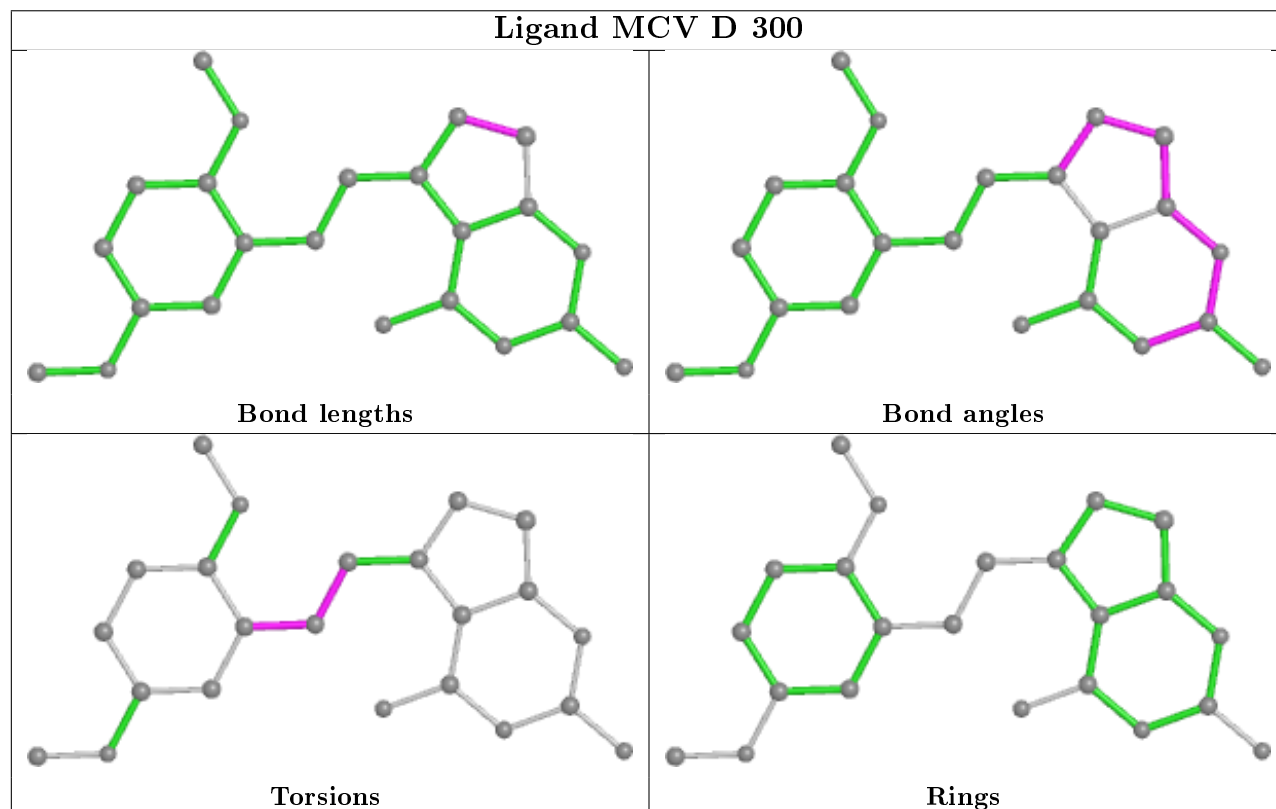
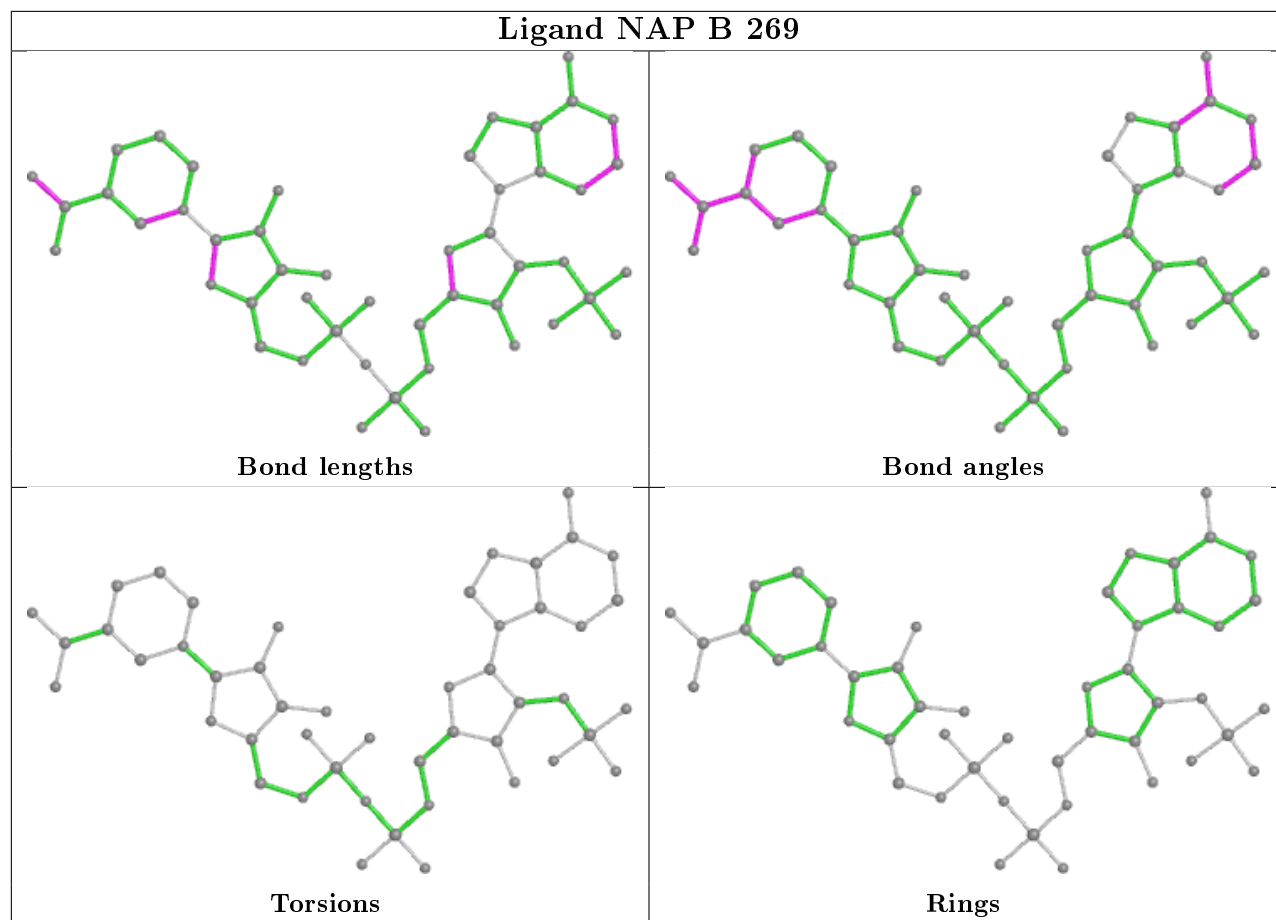
Mol	Chain	Res	Type	Clashes	Symm-Clashes
2	B	269	NAP	1	0
3	D	300	MCV	3	0
3	C	300	MCV	3	0
3	A	300	MCV	2	0
3	B	300	MCV	3	0
4	A	270	ACT	2	0

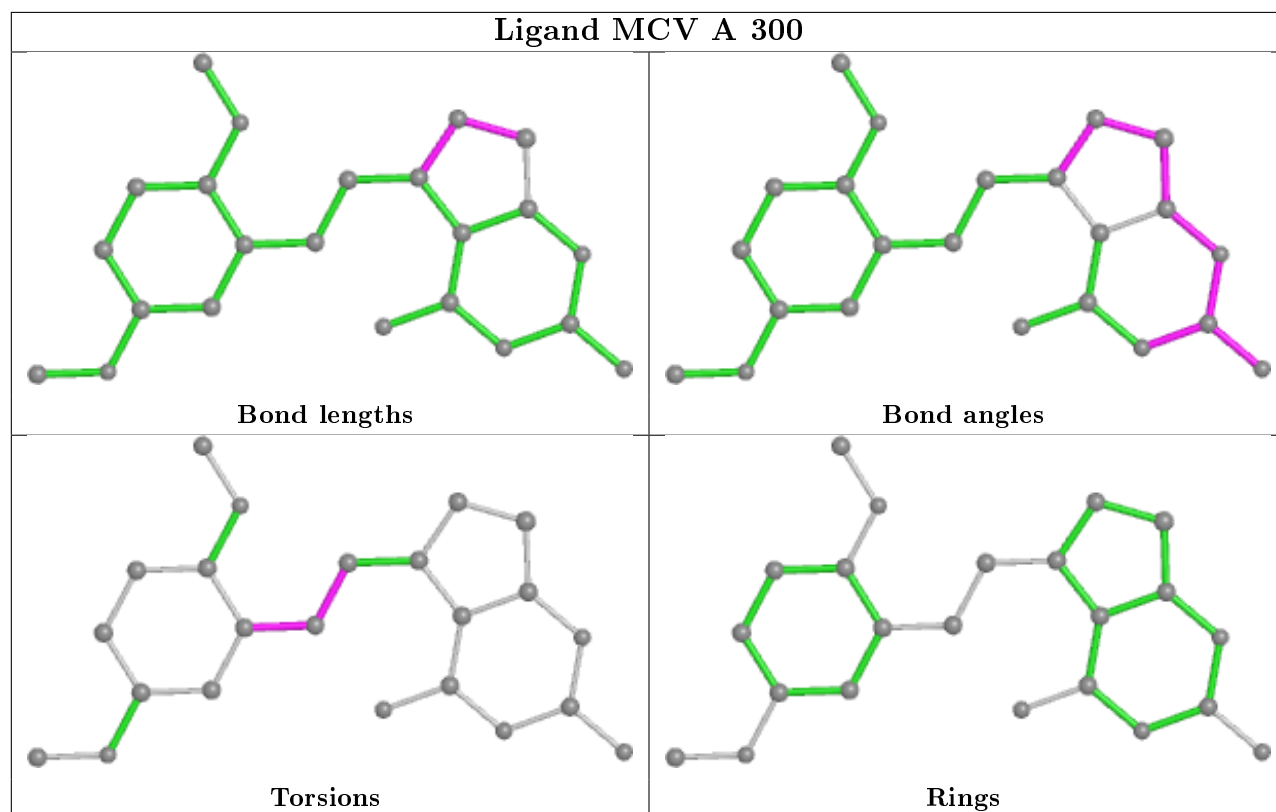
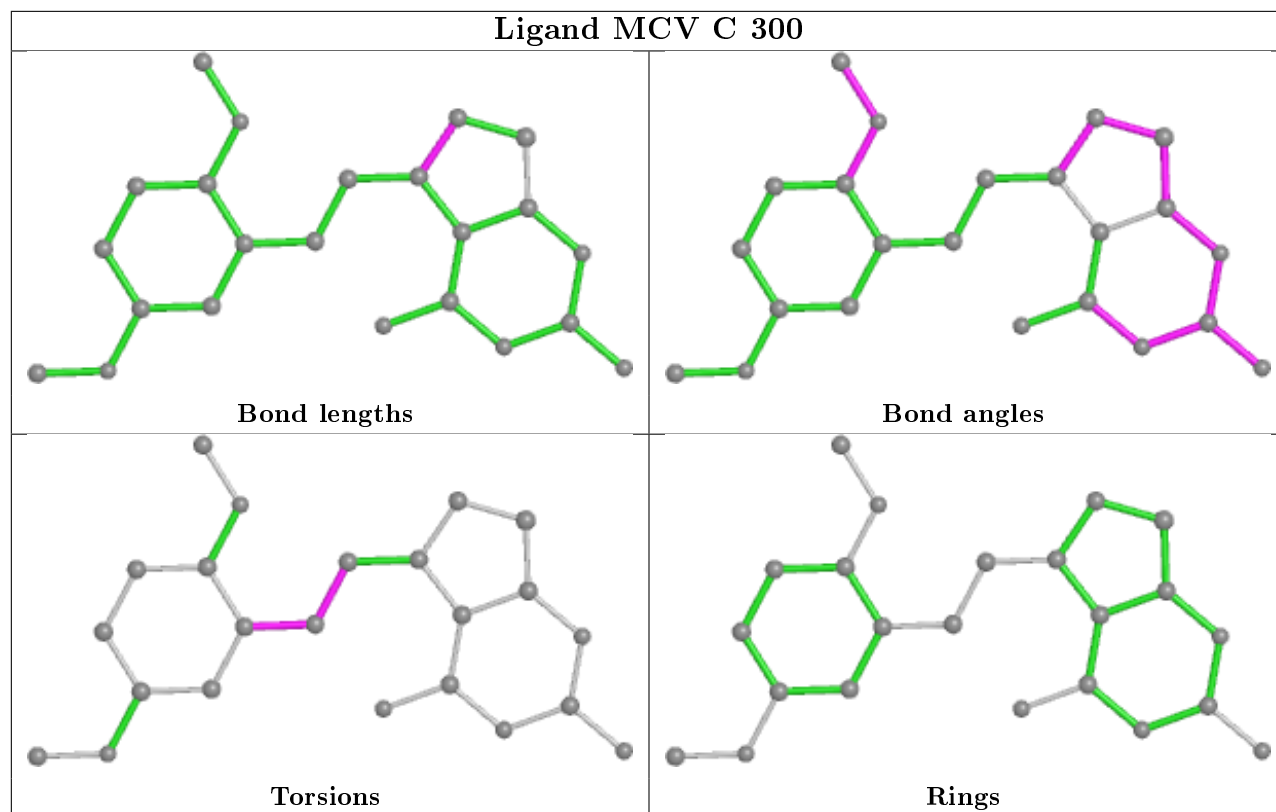
The following is a two-dimensional graphical depiction of Mogul quality analysis of bond lengths, bond angles, torsion angles, and ring geometry for all instances of the Ligand of Interest. In addition, ligands with molecular weight > 250 and outliers as shown on the validation Tables will also be included. For torsion angles, if less than 5% of the Mogul distribution of torsion angles is within 10 degrees of the torsion angle in question, then that torsion angle is considered an outlier. Any bond that is central to one or more torsion angles identified as an outlier by Mogul will be highlighted in the graph. For rings, the root-mean-square deviation (RMSD) between the ring in question and similar rings identified by Mogul is calculated over all ring torsion angles. If the average RMSD is greater than 60 degrees and the minimal RMSD between the ring in question and any Mogul-identified rings is also greater than 60 degrees, then that ring is considered an outlier. The outliers are highlighted in purple. The color gray indicates Mogul did not find sufficient equivalents in the CSD to analyse the geometry.

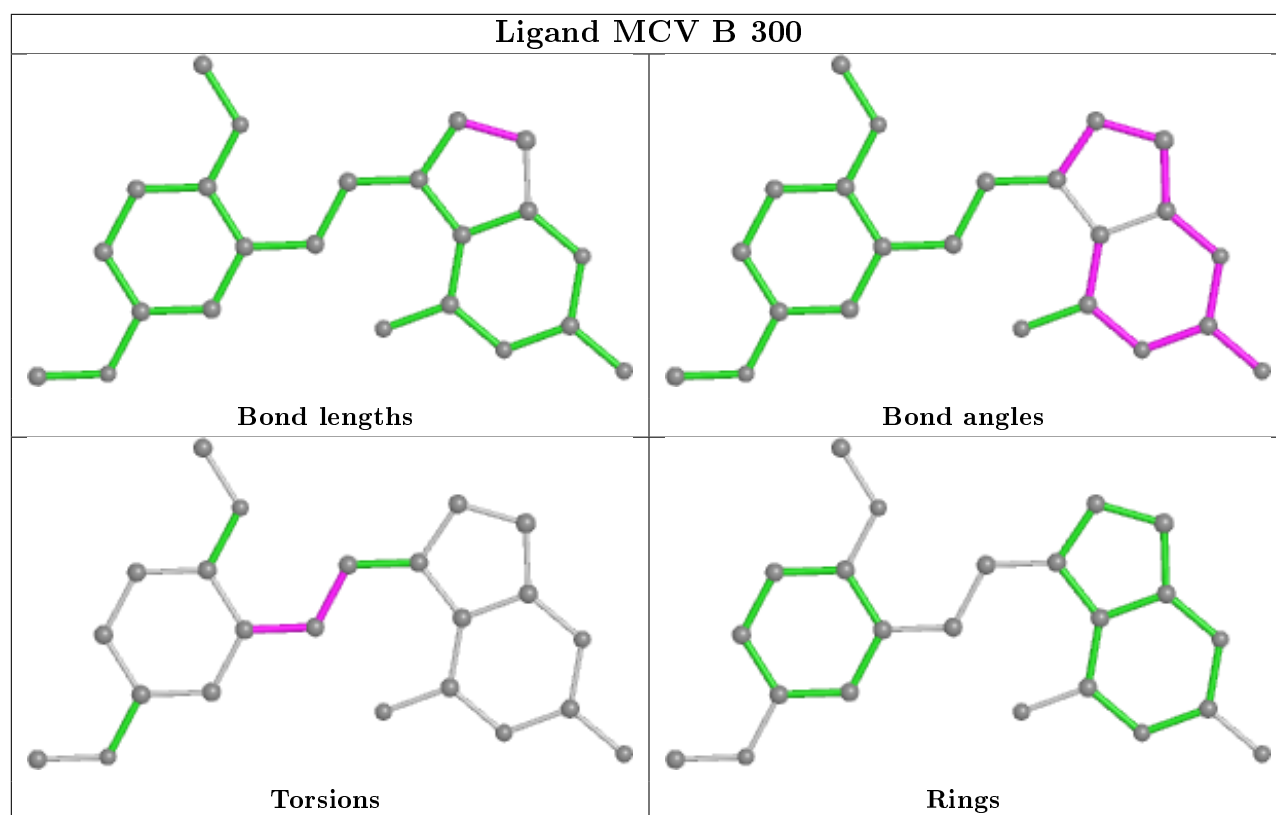












5.7 Other polymers [i](#)

There are no such residues in this entry.

5.8 Polymer linkage issues [i](#)

There are no chain breaks in this entry.

6 Fit of model and data

6.1 Protein, DNA and RNA chains

In the following table, the column labelled ‘#RSRZ> 2’ contains the number (and percentage) of RSRZ outliers, followed by percent RSRZ outliers for the chain as percentile scores relative to all X-ray entries and entries of similar resolution. The OWAB column contains the minimum, median, 95th percentile and maximum values of the occupancy-weighted average B-factor per residue. The column labelled ‘Q< 0.9’ lists the number of (and percentage) of residues with an average occupancy less than 0.9.

Mol	Chain	Analysed	<RSRZ>	#RSRZ>2	OWAB(Å ²)	Q<0.9
1	A	251/288 (87%)	-0.26	4 (1%) 72 76	7, 10, 22, 38	2 (0%)
1	B	251/288 (87%)	-0.24	7 (2%) 53 57	7, 10, 23, 45	0
1	C	248/288 (86%)	-0.25	6 (2%) 59 63	7, 11, 24, 44	3 (1%)
1	D	250/288 (86%)	-0.19	5 (2%) 65 69	8, 11, 23, 44	5 (2%)
All	All	1000/1152 (86%)	-0.24	22 (2%) 62 66	7, 11, 23, 45	10 (1%)

All (22) RSRZ outliers are listed below:

Mol	Chain	Res	Type	RSRZ
1	D	151	SER	6.0
1	A	104	GLN	4.8
1	B	104	GLN	4.7
1	B	143	LYS	4.5
1	A	151	SER	4.4
1	B	151	SER	4.3
1	D	2	GLU	4.1
1	B	211	VAL	3.9
1	B	212	ALA	3.9
1	C	212	ALA	3.7
1	C	211	VAL	3.5
1	D	211	VAL	2.9
1	C	2	GLU	2.9
1	C	195	TYR	2.8
1	D	152	SER	2.7
1	D	212	ALA	2.5
1	B	2	GLU	2.5
1	A	113	GLY	2.4
1	C	223	ARG	2.3
1	C	152	SER	2.2
1	B	152	SER	2.1
1	A	195	TYR	2.0

6.2 Non-standard residues in protein, DNA, RNA chains ⓘ

There are no non-standard protein/DNA/RNA residues in this entry.

6.3 Carbohydrates ⓘ

There are no carbohydrates in this entry.

6.4 Ligands ⓘ

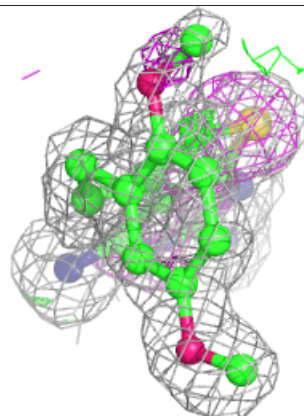
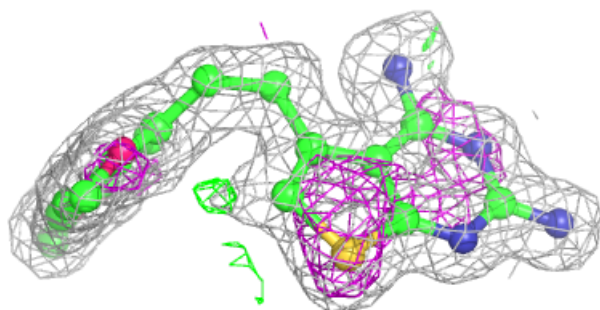
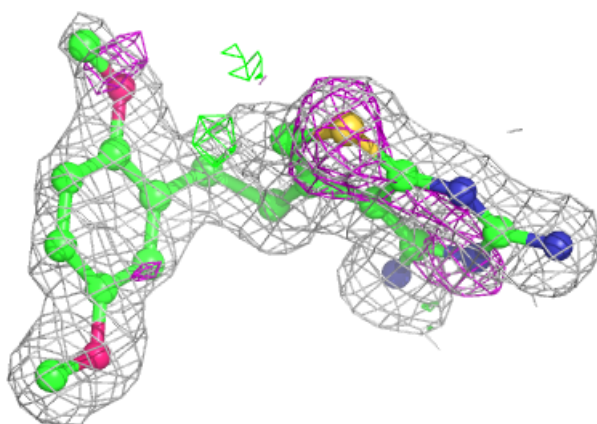
In the following table, the Atoms column lists the number of modelled atoms in the group and the number defined in the chemical component dictionary. The B-factors column lists the minimum, median, 95th percentile and maximum values of B factors of atoms in the group. The column labelled 'Q< 0.9' lists the number of atoms with occupancy less than 0.9.

Mol	Type	Chain	Res	Atoms	RSCC	RSR	B-factors(\AA^2)	Q<0.9
4	ACT	A	270	4/4	0.78	0.28	19,26,30,36	0
4	ACT	D	270	4/4	0.91	0.18	19,26,28,32	0
3	MCV	D	300	23/23	0.92	0.16	11,18,26,27	0
4	ACT	B	271	4/4	0.93	0.14	16,18,21,21	0
3	MCV	B	300	23/23	0.95	0.11	9,16,27,32	0
3	MCV	C	300	23/23	0.96	0.14	11,19,24,27	0
3	MCV	A	300	23/23	0.96	0.11	8,13,19,20	0
2	NAP	C	269	48/48	0.98	0.07	7,11,13,14	0
2	NAP	A	269	48/48	0.98	0.06	6,8,10,11	0
2	NAP	D	269	48/48	0.98	0.06	7,9,12,15	0
2	NAP	B	269	48/48	0.99	0.05	6,8,10,12	0
4	ACT	B	270	4/4	0.99	0.08	10,12,13,14	0

The following is a graphical depiction of the model fit to experimental electron density of all instances of the Ligand of Interest. In addition, ligands with molecular weight > 250 and outliers as shown on the geometry validation Tables will also be included. Each fit is shown from different orientation to approximate a three-dimensional view.

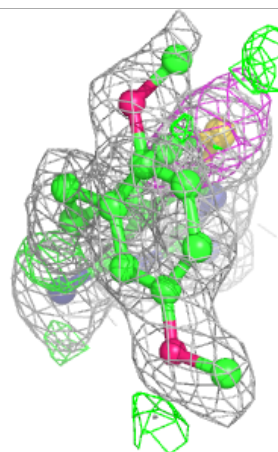
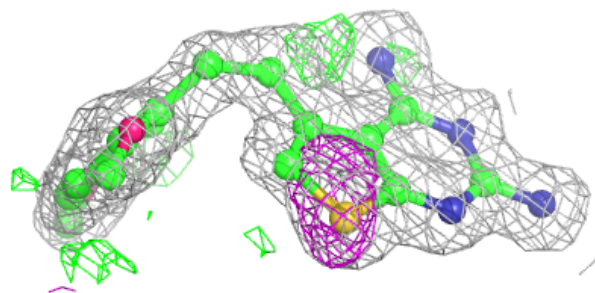
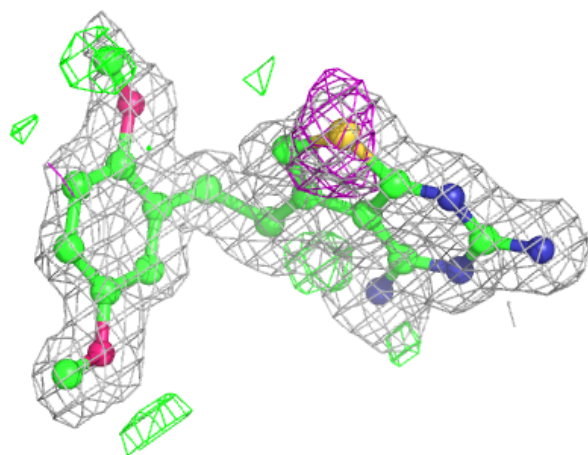
Electron density around MCV D 300:

$2mF_o-DF_c$ (at 0.7 rmsd) in gray
 mF_o-DF_c (at 3 rmsd) in purple (negative)
and green (positive)



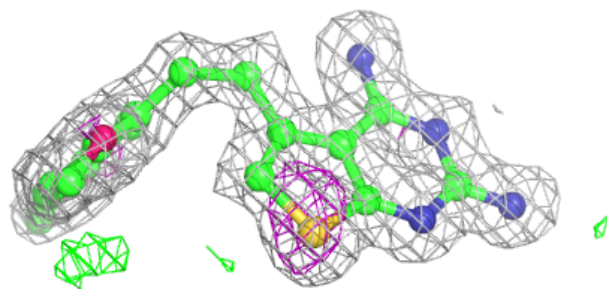
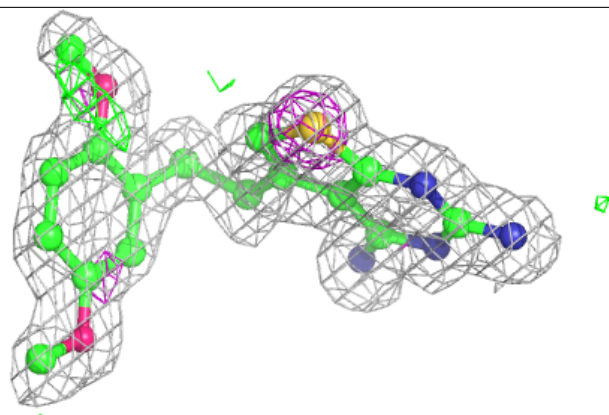
Electron density around MCV B 300:

$2mF_o-DF_c$ (at 0.7 rmsd) in gray
 mF_o-DF_c (at 3 rmsd) in purple (negative)
and green (positive)

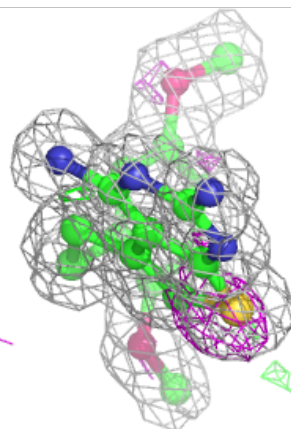
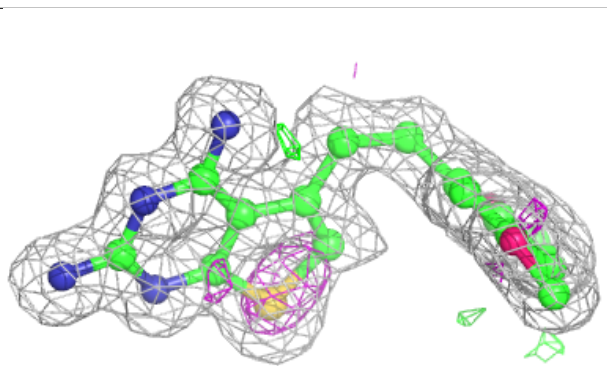
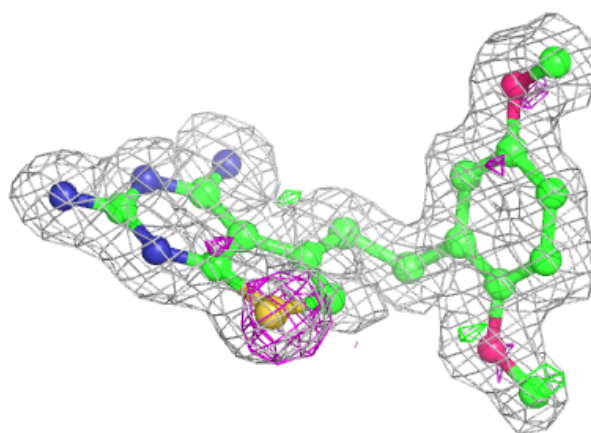


Electron density around MCV C 300:

$2mF_o-DF_c$ (at 0.7 rmsd) in gray
 mF_o-DF_c (at 3 rmsd) in purple (negative)
and green (positive)

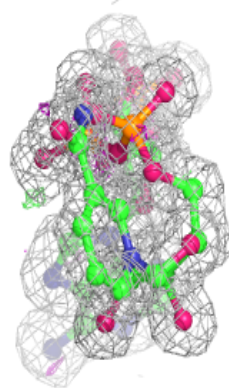
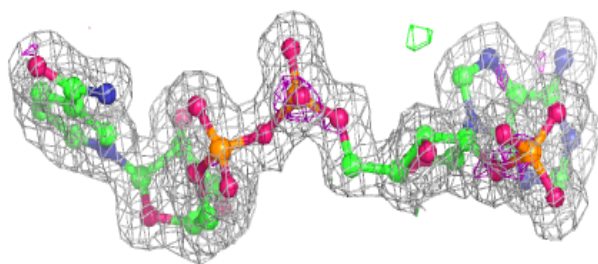
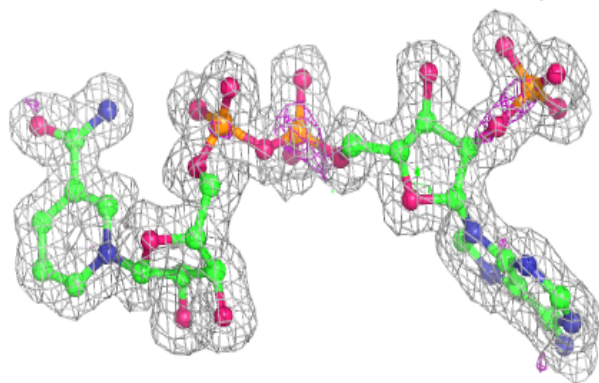
**Electron density around MCV A 300:**

$2mF_o-DF_c$ (at 0.7 rmsd) in gray
 mF_o-DF_c (at 3 rmsd) in purple (negative)
and green (positive)

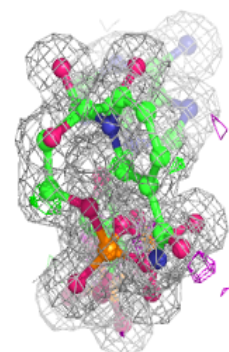
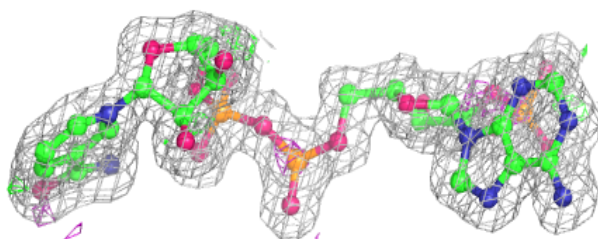
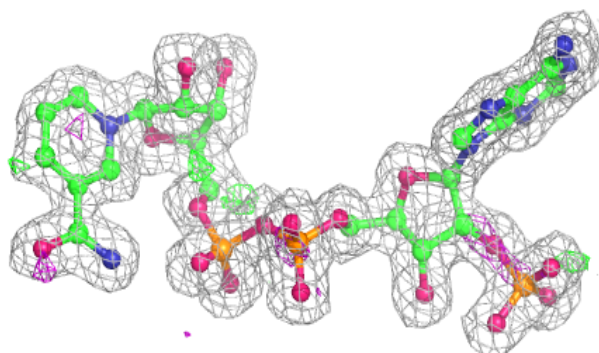


Electron density around NAP C 269:

$2mF_o-DF_c$ (at 0.7 rmsd) in gray
 mF_o-DF_c (at 3 rmsd) in purple (negative)
and green (positive)

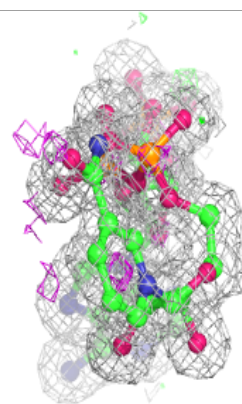
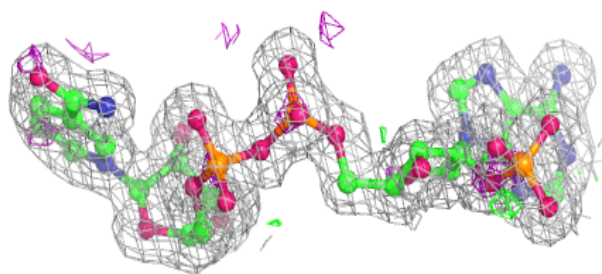
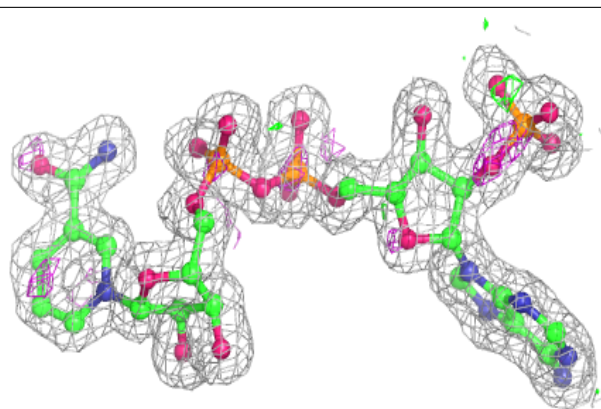
**Electron density around NAP A 269:**

$2mF_o-DF_c$ (at 0.7 rmsd) in gray
 mF_o-DF_c (at 3 rmsd) in purple (negative)
and green (positive)

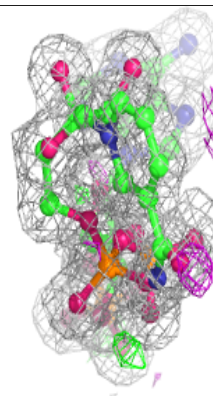
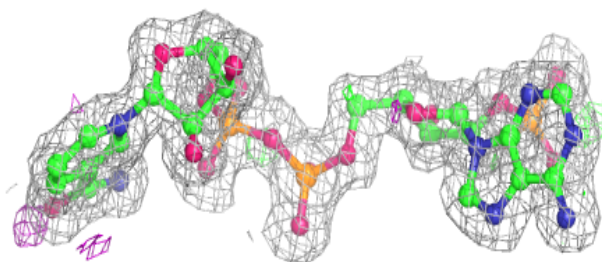
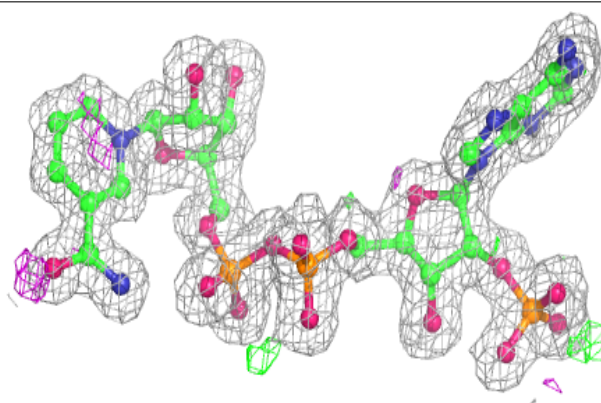


Electron density around NAP D 269:

$2mF_o-DF_c$ (at 0.7 rmsd) in gray
 mF_o-DF_c (at 3 rmsd) in purple (negative)
and green (positive)

**Electron density around NAP B 269:**

$2mF_o-DF_c$ (at 0.7 rmsd) in gray
 mF_o-DF_c (at 3 rmsd) in purple (negative)
and green (positive)



6.5 Other polymers

There are no such residues in this entry.