



# Full wwPDB X-ray Structure Validation Report ⓘ

Jun 14, 2021 – 02:03 PM EDT

PDB ID : 7MCP  
Title : Crystal structure of Staphylococcus aureus Cystathionine gamma-lyase, Holoenzyme dimer  
Authors : Nuthanakanti, A.; Serganov, A.; Kaushik, A.  
Deposited on : 2021-04-02  
Resolution : 2.40 Å(reported)

This is a Full wwPDB X-ray Structure Validation Report for a publicly released PDB entry.

We welcome your comments at [validation@mail.wwpdb.org](mailto:validation@mail.wwpdb.org)

A user guide is available at

<https://www.wwpdb.org/validation/2017/XrayValidationReportHelp>

with specific help available everywhere you see the ⓘ symbol.

---

The following versions of software and data (see [references ⓘ](#)) were used in the production of this report:

MolProbity : 4.02b-467  
Mogul : 1.8.5 (274361), CSD as541be (2020)  
Xtriage (Phenix) : 1.13  
EDS : 2.20  
Percentile statistics : 20191225.v01 (using entries in the PDB archive December 25th 2019)  
Refmac : 5.8.0158  
CCP4 : 7.0.044 (Gargrove)  
Ideal geometry (proteins) : Engh & Huber (2001)  
Ideal geometry (DNA, RNA) : Parkinson et al. (1996)  
Validation Pipeline (wwPDB-VP) : 2.20

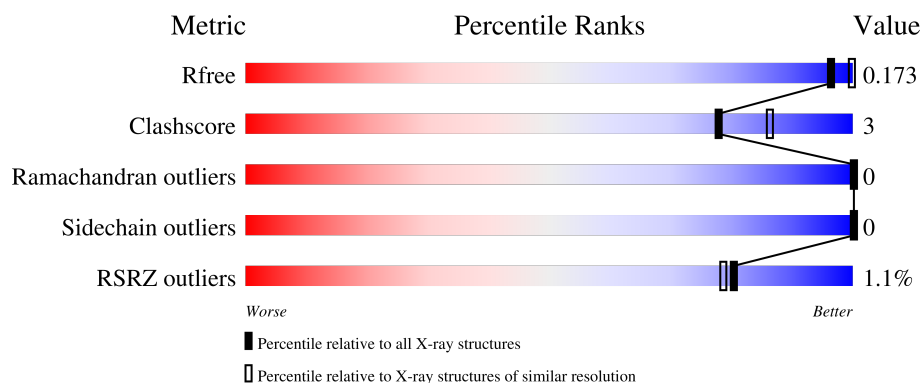
# 1 Overall quality at a glance

The following experimental techniques were used to determine the structure:

*X-RAY DIFFRACTION*

The reported resolution of this entry is 2.40 Å.

Percentile scores (ranging between 0-100) for global validation metrics of the entry are shown in the following graphic. The table shows the number of entries on which the scores are based.



Metric	Whole archive (#Entries)	Similar resolution (#Entries, resolution range(Å))
$R_{free}$	130704	3907 (2.40-2.40)
Clashscore	141614	4398 (2.40-2.40)
Ramachandran outliers	138981	4318 (2.40-2.40)
Sidechain outliers	138945	4319 (2.40-2.40)
RSRZ outliers	127900	3811 (2.40-2.40)

The table below summarises the geometric issues observed across the polymeric chains and their fit to the electron density. The red, orange, yellow and green segments of the lower bar indicate the fraction of residues that contain outliers for  $\geq 3$ , 2, 1 and 0 types of geometric quality criteria respectively. A grey segment represents the fraction of residues that are not modelled. The numeric value for each fraction is indicated below the corresponding segment, with a dot representing fractions  $\leq 5\%$ . The upper red bar (where present) indicates the fraction of residues that have poor fit to the electron density. The numeric value is given above the bar.

Mol	Chain	Length	Quality of chain
1	A	380	 2% 94% 6%
1	H	380	 % 90% 10%

## 2 Entry composition [i](#)

There are 5 unique types of molecules in this entry. The entry contains 6371 atoms, of which 0 are hydrogens and 0 are deuteriums.

In the tables below, the ZeroOcc column contains the number of atoms modelled with zero occupancy, the AltConf column contains the number of residues with at least one atom in alternate conformation and the Trace column contains the number of residues modelled with at most 2 atoms.

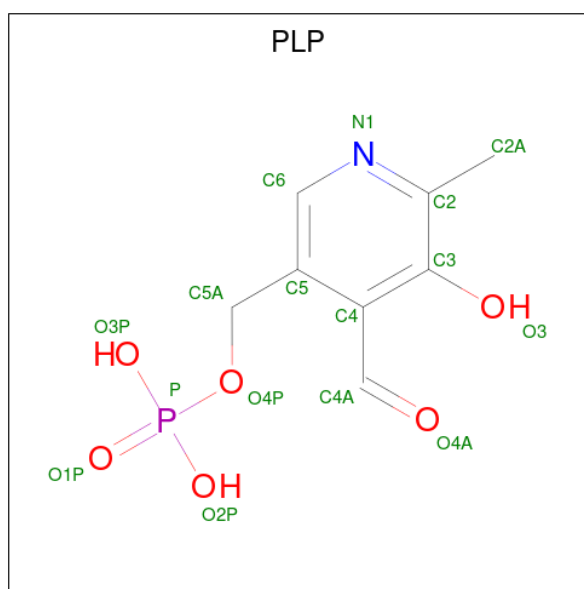
- Molecule 1 is a protein called Bifunctional cystathionine gamma-lyase/homocysteine desulfhydrase.

Mol	Chain	Residues	Atoms						ZeroOcc	AltConf	Trace
1	A	380	Total	C	N	O	P	S	0	1	0
			2902	1831	486	577	1	7			
1	H	380	Total	C	N	O	P	S	0	1	0
			2916	1837	490	581	1	7			

There are 2 discrepancies between the modelled and reference sequences:

Chain	Residue	Modelled	Actual	Comment	Reference
A	1	SER	-	expression tag	UNP X5E0F1
H	1	SER	-	expression tag	UNP X5E0F1

- Molecule 2 is PYRIDOXAL-5'-PHOSPHATE (three-letter code: PLP) (formula: C<sub>8</sub>H<sub>10</sub>NO<sub>6</sub>P).



Mol	Chain	Residues	Atoms					ZeroOcc	AltConf
2	A	1	Total	C	N	O	P	0	0
			15	8	1	5	1		

*Continued on next page...*

Continued from previous page...

Mol	Chain	Residues	Atoms					ZeroOcc	AltConf
2	H	1	Total	C	N	O	P	0	0
			15	8	1	5	1		

- Molecule 3 is GLYCEROL (three-letter code: GOL) (formula:  $C_3H_8O_3$ ).



Mol	Chain	Residues	Atoms			ZeroOcc	AltConf
3	A	1	Total	C	O	0	0
			6	3	3		
3	A	1	Total	C	O	0	0
			5	3	2		
3	A	1	Total	C	O	0	0
			4	3	1		
3	H	1	Total	C	O	0	0
			6	3	3		

- Molecule 4 is SODIUM ION (three-letter code: NA) (formula: Na).

Mol	Chain	Residues	Atoms		ZeroOcc	AltConf
4	A	4	Total	Na	0	0
			4	4		
4	H	2	Total	Na	0	0
			2	2		

- Molecule 5 is water.

Mol	Chain	Residues	Atoms		ZeroOcc	AltConf
5	A	261	Total 261	O 261	0	0
5	H	235	Total 235	O 235	0	0

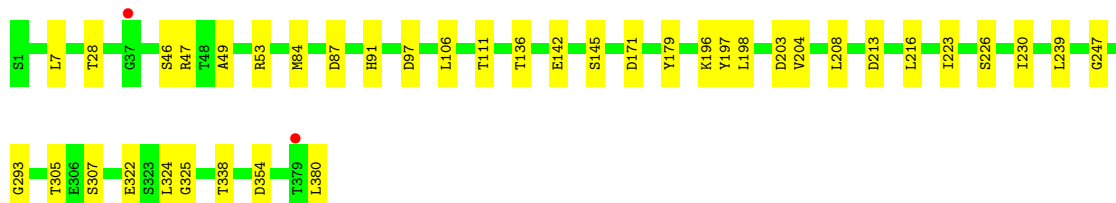
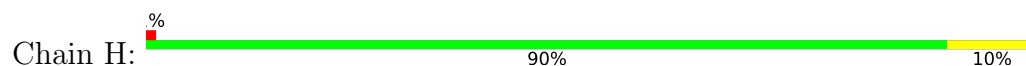
### 3 Residue-property plots

These plots are drawn for all protein, RNA, DNA and oligosaccharide chains in the entry. The first graphic for a chain summarises the proportions of the various outlier classes displayed in the second graphic. The second graphic shows the sequence view annotated by issues in geometry and electron density. Residues are color-coded according to the number of geometric quality criteria for which they contain at least one outlier: green = 0, yellow = 1, orange = 2 and red = 3 or more. A red dot above a residue indicates a poor fit to the electron density ( $RSRZ > 2$ ). Stretches of 2 or more consecutive residues without any outlier are shown as a green connector. Residues present in the sample, but not in the model, are shown in grey.

- Molecule 1: Bifunctional cystathionine gamma-lyase/homocysteine desulfhydrase



- Molecule 1: Bifunctional cystathionine gamma-lyase/homocysteine desulfhydrase



## 4 Data and refinement statistics

Property	Value	Source
Space group	P 43 2 2	Depositor
Cell constants a, b, c, $\alpha$ , $\beta$ , $\gamma$	104.47Å 104.47Å 286.61Å 90.00° 90.00° 90.00°	Depositor
Resolution (Å)	29.76 – 2.40 29.76 – 2.40	Depositor EDS
% Data completeness (in resolution range)	98.9 (29.76-2.40) 98.9 (29.76-2.40)	Depositor EDS
$R_{merge}$	0.22	Depositor
$R_{sym}$	(Not available)	Depositor
$\langle I/\sigma(I) \rangle$ <sup>1</sup>	2.52 (at 2.39Å)	Xtriage
Refinement program	PHENIX 1.14_3260	Depositor
R, $R_{free}$	0.149 , 0.173 0.149 , 0.173	Depositor DCC
$R_{free}$ test set	1980 reflections (3.17%)	wwPDB-VP
Wilson B-factor (Å <sup>2</sup> )	33.3	Xtriage
Anisotropy	0.649	Xtriage
Bulk solvent $k_{sol}$ (e/Å <sup>3</sup> ), $B_{sol}$ (Å <sup>2</sup> )	0.38 , 49.1	EDS
L-test for twinning <sup>2</sup>	$\langle  L  \rangle = 0.50$ , $\langle L^2 \rangle = 0.33$	Xtriage
Estimated twinning fraction	No twinning to report.	Xtriage
$F_o, F_c$ correlation	0.97	EDS
Total number of atoms	6371	wwPDB-VP
Average B, all atoms (Å <sup>2</sup> )	35.0	wwPDB-VP

Xtriage's analysis on translational NCS is as follows: *The largest off-origin peak in the Patterson function is 9.27% of the height of the origin peak. No significant pseudotranslation is detected.*

<sup>1</sup>Intensities estimated from amplitudes.

<sup>2</sup>Theoretical values of  $\langle |L| \rangle$ ,  $\langle L^2 \rangle$  for acentric reflections are 0.5, 0.333 respectively for untwinned datasets, and 0.375, 0.2 for perfectly twinned datasets.

## 5 Model quality

### 5.1 Standard geometry

Bond lengths and bond angles in the following residue types are not validated in this section: LLP, GOL, NA, PLP

The Z score for a bond length (or angle) is the number of standard deviations the observed value is removed from the expected value. A bond length (or angle) with  $|Z| > 5$  is considered an outlier worth inspection. RMSZ is the root-mean-square of all Z scores of the bond lengths (or angles).

Mol	Chain	Bond lengths		Bond angles	
		RMSZ	$\# Z  > 5$	RMSZ	$\# Z  > 5$
1	A	0.40	0/2926	0.57	0/3980
1	H	0.39	0/2940	0.58	0/3997
All	All	0.39	0/5866	0.58	0/7977

There are no bond length outliers.

There are no bond angle outliers.

There are no chirality outliers.

There are no planarity outliers.

### 5.2 Too-close contacts

In the following table, the Non-H and H(model) columns list the number of non-hydrogen atoms and hydrogen atoms in the chain respectively. The H(added) column lists the number of hydrogen atoms added and optimized by MolProbity. The Clashes column lists the number of clashes within the asymmetric unit, whereas Symm-Clashes lists symmetry-related clashes.

Mol	Chain	Non-H	H(model)	H(added)	Clashes	Symm-Clashes
1	A	2902	0	2872	16	0
1	H	2916	0	2894	23	0
2	A	15	0	6	0	0
2	H	15	0	7	0	0
3	A	15	0	16	1	0
3	H	6	0	8	0	0
4	A	4	0	0	0	0
4	H	2	0	0	0	0
5	A	261	0	0	2	0
5	H	235	0	0	0	0
All	All	6371	0	5803	34	0



The all-atom clashscore is defined as the number of clashes found per 1000 atoms (including hydrogen atoms). The all-atom clashscore for this structure is 3.

All (34) close contacts within the same asymmetric unit are listed below, sorted by their clash magnitude.

Atom-1	Atom-2	Interatomic distance (Å)	Clash overlap (Å)
1:A:47:ARG:HA	1:A:230:ILE:HD13	1.86	0.56
1:A:272:GLN:NE2	5:A:501:HOH:O	2.38	0.53
1:H:196:LLP:HD3	1:H:324:LEU:HG	1.90	0.53
1:H:46:SER:O	1:H:53:ARG:NH2	2.42	0.52
1:A:28:THR:HA	1:H:203:ASP:HA	1.91	0.52
1:A:203:ASP:HA	1:H:28:THR:HA	1.92	0.52
1:H:204:VAL:HG11	1:H:239:LEU:HD13	1.93	0.50
1:A:76:VAL:HG13	1:H:226:SER:O	2.13	0.49
1:H:91:HIS:HB3	1:H:136:THR:HA	1.96	0.47
1:H:106:LEU:O	1:H:111:THR:HG23	2.15	0.47
1:A:156:LYS:NZ	3:A:403:GOL:H2	2.30	0.45
1:H:84:MET:HE3	1:H:223:ILE:HG23	1.98	0.45
1:H:305:THR:OG1	1:H:354:ASP:HB3	2.17	0.45
1:A:179:TYR:CD1	1:A:293:GLY:HA3	2.52	0.45
1:H:47:ARG:HA	1:H:230:ILE:HD13	1.98	0.45
1:A:108:LYS:NZ	5:A:506:HOH:O	2.50	0.45
1:A:312:ILE:HD11	1:A:333:VAL:HG23	1.97	0.44
1:A:102:THR:O	1:A:106:LEU:HD12	2.18	0.43
1:H:307:SER:HB3	1:H:380:LEU:HD13	1.99	0.43
1:A:112:ARG:HD2	1:H:87:ASP:OD1	2.18	0.43
1:A:311:LEU:HD12	1:A:311:LEU:HA	1.79	0.43
1:A:76:VAL:CG1	1:H:226:SER:O	2.67	0.43
1:H:46:SER:HA	1:H:49:ALA:O	2.19	0.42
1:H:322:GLU:OE2	1:H:338:THR:HG23	2.19	0.42
1:A:305:THR:HG23	1:A:336:LEU:HD11	2.01	0.42
1:A:213:ASP:HB3	1:A:216:LEU:HB2	2.02	0.42
1:H:142:GLU:HG2	1:H:171:ASP:HB3	2.00	0.41
1:H:198:LEU:HD13	1:H:208:LEU:HD12	2.01	0.41
1:H:213:ASP:HB3	1:H:216:LEU:HB2	2.01	0.41
1:H:7:LEU:HD13	1:H:247:GLY:H	1.86	0.41
1:A:196:LLP:HD3	1:A:324:LEU:HG	2.02	0.41
1:H:197:TYR:CE1	1:H:325:GLY:HA2	2.56	0.40
1:H:97:ASP:O	1:H:145:SER:HB2	2.21	0.40
1:H:179:TYR:CD1	1:H:293:GLY:HA3	2.56	0.40

There are no symmetry-related clashes.

## 5.3 Torsion angles

### 5.3.1 Protein backbone

In the following table, the Percentiles column shows the percent Ramachandran outliers of the chain as a percentile score with respect to all X-ray entries followed by that with respect to entries of similar resolution.

The Analysed column shows the number of residues for which the backbone conformation was analysed, and the total number of residues.

Mol	Chain	Analysed	Favoured	Allowed	Outliers	Percentiles	
1	A	378/380 (100%)	366 (97%)	12 (3%)	0	100	100
1	H	378/380 (100%)	367 (97%)	11 (3%)	0	100	100
All	All	756/760 (100%)	733 (97%)	23 (3%)	0	100	100

There are no Ramachandran outliers to report.

### 5.3.2 Protein sidechains

In the following table, the Percentiles column shows the percent sidechain outliers of the chain as a percentile score with respect to all X-ray entries followed by that with respect to entries of similar resolution.

The Analysed column shows the number of residues for which the sidechain conformation was analysed, and the total number of residues.

Mol	Chain	Analysed	Rotameric	Outliers	Percentiles	
1	A	314/321 (98%)	314 (100%)	0	100	100
1	H	318/321 (99%)	318 (100%)	0	100	100
All	All	632/642 (98%)	632 (100%)	0	100	100

There are no protein residues with a non-rotameric sidechain to report.

Sometimes sidechains can be flipped to improve hydrogen bonding and reduce clashes. All (1) such sidechains are listed below:

Mol	Chain	Res	Type
1	A	271	GLN

### 5.3.3 RNA

There are no RNA molecules in this entry.

## 5.4 Non-standard residues in protein, DNA, RNA chains ⓘ

2 non-standard protein/DNA/RNA residues are modelled in this entry.

In the following table, the Counts columns list the number of bonds (or angles) for which Mogul statistics could be retrieved, the number of bonds (or angles) that are observed in the model and the number of bonds (or angles) that are defined in the Chemical Component Dictionary. The Link column lists molecule types, if any, to which the group is linked. The Z score for a bond length (or angle) is the number of standard deviations the observed value is removed from the expected value. A bond length (or angle) with  $|Z| > 2$  is considered an outlier worth inspection. RMSZ is the root-mean-square of all Z scores of the bond lengths (or angles).

Mol	Type	Chain	Res	Link	Bond lengths			Bond angles		
					Counts	RMSZ	$\# Z  > 2$	Counts	RMSZ	$\# Z  > 2$
1	LLP	A	196	1	23,24,25	0.93	0	25,32,34	0.59	0
1	LLP	H	196	1	23,24,25	0.97	0	25,32,34	0.68	0

In the following table, the Chirals column lists the number of chiral outliers, the number of chiral centers analysed, the number of these observed in the model and the number defined in the Chemical Component Dictionary. Similar counts are reported in the Torsion and Rings columns. '-' means no outliers of that kind were identified.

Mol	Type	Chain	Res	Link	Chirals	Torsions	Rings
1	LLP	A	196	1	-	4/16/17/19	0/1/1/1
1	LLP	H	196	1	-	3/16/17/19	0/1/1/1

There are no bond length outliers.

There are no bond angle outliers.

There are no chirality outliers.

All (7) torsion outliers are listed below:

Mol	Chain	Res	Type	Atoms
1	A	196	LLP	O-C-CA-CB
1	H	196	LLP	O-C-CA-CB
1	A	196	LLP	C4-C4'-NZ-CE
1	H	196	LLP	C4-C4'-NZ-CE
1	A	196	LLP	CD-CE-NZ-C4'
1	H	196	LLP	CD-CE-NZ-C4'
1	A	196	LLP	N-CA-CB-CG

There are no ring outliers.

2 monomers are involved in 2 short contacts:

Mol	Chain	Res	Type	Clashes	Symm-Clashes
1	A	196	LLP	1	0
1	H	196	LLP	1	0

## 5.5 Carbohydrates [i](#)

There are no monosaccharides in this entry.

## 5.6 Ligand geometry [i](#)

Of 12 ligands modelled in this entry, 6 are monoatomic - leaving 6 for Mogul analysis.

In the following table, the Counts columns list the number of bonds (or angles) for which Mogul statistics could be retrieved, the number of bonds (or angles) that are observed in the model and the number of bonds (or angles) that are defined in the Chemical Component Dictionary. The Link column lists molecule types, if any, to which the group is linked. The Z score for a bond length (or angle) is the number of standard deviations the observed value is removed from the expected value. A bond length (or angle) with  $|Z| > 2$  is considered an outlier worth inspection. RMSZ is the root-mean-square of all Z scores of the bond lengths (or angles).

Mol	Type	Chain	Res	Link	Bond lengths			Bond angles		
					Counts	RMSZ	$\# Z  > 2$	Counts	RMSZ	$\# Z  > 2$
2	PLP	A	401	1	15,15,16	0.71	0	20,22,23	0.59	0
3	GOL	A	404	-	3,3,5	0.88	0	2,2,5	0.61	0
2	PLP	H	401	1	15,15,16	0.67	0	20,22,23	0.51	0
3	GOL	A	402	-	5,5,5	0.96	0	5,5,5	0.87	0
3	GOL	A	403	-	3,4,5	1.06	0	1,4,5	1.13	0
3	GOL	H	402	-	5,5,5	0.88	0	5,5,5	1.01	0

In the following table, the Chirals column lists the number of chiral outliers, the number of chiral centers analysed, the number of these observed in the model and the number defined in the Chemical Component Dictionary. Similar counts are reported in the Torsion and Rings columns. '-' means no outliers of that kind were identified.

Mol	Type	Chain	Res	Link	Chirals	Torsions	Rings
2	PLP	A	401	1	-	0/6/6/8	0/1/1/1
3	GOL	A	404	-	-	0/1/1/4	-
2	PLP	H	401	1	-	0/6/6/8	0/1/1/1
3	GOL	A	402	-	-	1/4/4/4	-
3	GOL	A	403	-	-	2/2/2/4	-
3	GOL	H	402	-	-	2/4/4/4	-

There are no bond length outliers.

There are no bond angle outliers.

There are no chirality outliers.

All (5) torsion outliers are listed below:

Mol	Chain	Res	Type	Atoms
3	A	403	GOL	O1-C1-C2-O2
3	A	403	GOL	O1-C1-C2-C3
3	H	402	GOL	O1-C1-C2-C3
3	H	402	GOL	O1-C1-C2-O2
3	A	402	GOL	O1-C1-C2-C3

There are no ring outliers.

1 monomer is involved in 1 short contact:

Mol	Chain	Res	Type	Clashes	Symm-Clashes
3	A	403	GOL	1	0

## 5.7 Other polymers [i](#)

There are no such residues in this entry.

## 5.8 Polymer linkage issues [i](#)

There are no chain breaks in this entry.

## 6 Fit of model and data [i](#)

### 6.1 Protein, DNA and RNA chains [i](#)

In the following table, the column labelled ‘#RSRZ> 2’ contains the number (and percentage) of RSRZ outliers, followed by percent RSRZ outliers for the chain as percentile scores relative to all X-ray entries and entries of similar resolution. The OWAB column contains the minimum, median, 95<sup>th</sup> percentile and maximum values of the occupancy-weighted average B-factor per residue. The column labelled ‘Q< 0.9’ lists the number of (and percentage) of residues with an average occupancy less than 0.9.

Mol	Chain	Analysed	<RSRZ>	#RSRZ>2	OWAB(Å <sup>2</sup> )	Q<0.9
1	A	379/380 (99%)	-0.68	6 (1%) 72 70	25, 32, 49, 75	0
1	H	379/380 (99%)	-0.62	2 (0%) 91 89	25, 34, 50, 61	0
All	All	758/760 (99%)	-0.65	8 (1%) 80 79	25, 33, 50, 75	0

All (8) RSRZ outliers are listed below:

Mol	Chain	Res	Type	RSRZ
1	A	345	ASP	4.3
1	A	344	ALA	3.8
1	A	346	ILE	3.6
1	A	342	ILE	3.2
1	A	341	SER	3.2
1	H	37	GLY	2.1
1	H	379	THR	2.0
1	A	343	PRO	2.0

### 6.2 Non-standard residues in protein, DNA, RNA chains [i](#)

In the following table, the Atoms column lists the number of modelled atoms in the group and the number defined in the chemical component dictionary. The B-factors column lists the minimum, median, 95<sup>th</sup> percentile and maximum values of B factors of atoms in the group. The column labelled ‘Q< 0.9’ lists the number of atoms with occupancy less than 0.9.

Mol	Type	Chain	Res	Atoms	RSCC	RSR	B-factors(Å <sup>2</sup> )	Q<0.9
1	LLP	A	196	24/25	0.99	0.11	22,28,30,33	0
1	LLP	H	196	24/25	0.99	0.13	25,29,34,35	0

### 6.3 Carbohydrates [i](#)

There are no monosaccharides in this entry.

## 6.4 Ligands [i](#)

In the following table, the Atoms column lists the number of modelled atoms in the group and the number defined in the chemical component dictionary. The B-factors column lists the minimum, median, 95<sup>th</sup> percentile and maximum values of B factors of atoms in the group. The column labelled 'Q< 0.9' lists the number of atoms with occupancy less than 0.9.

Mol	Type	Chain	Res	Atoms	RSCC	RSR	B-factors(Å <sup>2</sup> )	Q<0.9
4	NA	A	405	1/1	0.78	0.14	54,54,54,54	0
4	NA	A	408	1/1	0.80	0.10	57,57,57,57	0
3	GOL	A	404	4/6	0.81	0.28	53,55,57,72	0
3	GOL	A	403	5/6	0.83	0.20	37,44,54,54	3
4	NA	H	403	1/1	0.85	0.10	56,56,56,56	0
3	GOL	A	402	6/6	0.88	0.30	45,49,57,57	2
4	NA	H	404	1/1	0.88	0.10	56,56,56,56	0
2	PLP	A	401	15/16	0.91	0.26	34,47,60,61	15
2	PLP	H	401	15/16	0.93	0.27	34,47,63,64	15
4	NA	A	406	1/1	0.97	0.06	52,52,52,52	0
3	GOL	H	402	6/6	0.97	0.13	37,39,42,43	3
4	NA	A	407	1/1	0.98	0.03	43,43,43,43	0

## 6.5 Other polymers [i](#)

There are no such residues in this entry.