



Full wwPDB X-ray Structure Validation Report ⓘ

Aug 10, 2020 – 12:23 AM BST

PDB ID : 3ME3
Title : Activator-Bound Structure of Human Pyruvate Kinase M2
Authors : Hong, B.; Dimov, S.; Tempel, W.; Auld, D.; Thomas, C.; Boxer, M.; Jianq, J.-K.; Skoumbourdis, A.; Min, S.; Southall, N.; Arrowsmith, C.H.; Edwards, A.M.; Bountra, C.; Weigelt, J.; Bochkarev, A.; Inglese, J.; Park, H.; Structural Genomics Consortium (SGC)
Deposited on : 2010-03-31
Resolution : 1.95 Å(reported)

This is a Full wwPDB X-ray Structure Validation Report for a publicly released PDB entry.

We welcome your comments at validation@mail.wwpdb.org

A user guide is available at

<https://www.wwpdb.org/validation/2017/XrayValidationReportHelp>

with specific help available everywhere you see the ⓘ symbol.

The following versions of software and data (see [references ⓘ](#)) were used in the production of this report:

MolProbity : 4.02b-467
Mogul : 1.8.5 (274361), CSD as541be (2020)
Xtriage (Phenix) : 1.13
EDS : 2.13.1
buster-report : 1.1.7 (2018)
Percentile statistics : 20191225.v01 (using entries in the PDB archive December 25th 2019)
Refmac : 5.8.0158
CCP4 : 7.0.044 (Gargrove)
Ideal geometry (proteins) : Engh & Huber (2001)
Ideal geometry (DNA, RNA) : Parkinson et al. (1996)
Validation Pipeline (wwPDB-VP) : 2.13.1

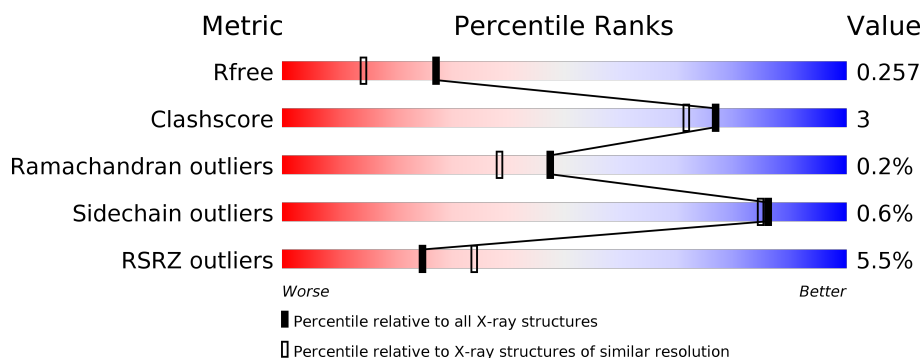
1 Overall quality at a glance

The following experimental techniques were used to determine the structure:

X-RAY DIFFRACTION

The reported resolution of this entry is 1.95 Å.

Percentile scores (ranging between 0-100) for global validation metrics of the entry are shown in the following graphic. The table shows the number of entries on which the scores are based.



Metric	Whole archive (#Entries)	Similar resolution (#Entries, resolution range(Å))
R_{free}	130704	2580 (1.96-1.96)
Clashscore	141614	2705 (1.96-1.96)
Ramachandran outliers	138981	2678 (1.96-1.96)
Sidechain outliers	138945	2678 (1.96-1.96)
RSRZ outliers	127900	2539 (1.96-1.96)

The table below summarises the geometric issues observed across the polymeric chains and their fit to the electron density. The red, orange, yellow and green segments on the lower bar indicate the fraction of residues that contain outliers for ≥ 3 , 2, 1 and 0 types of geometric quality criteria respectively. A grey segment represents the fraction of residues that are not modelled. The numeric value for each fraction is indicated below the corresponding segment, with a dot representing fractions $\leq 5\%$. The upper red bar (where present) indicates the fraction of residues that have poor fit to the electron density. The numeric value is given above the bar.

Mol	Chain	Length	Quality of chain
1	A	550	<div> <div>5%</div> <div> <div></div> <div>87%</div> <div>7%</div> <div>6%</div> </div> </div>
1	B	550	<div> <div>8%</div> <div> <div></div> <div>83%</div> <div>7%</div> <div>9%</div> </div> </div>
1	C	550	<div> <div>4%</div> <div> <div></div> <div>87%</div> <div>7%</div> <div>6%</div> </div> </div>
1	D	550	<div> <div>4%</div> <div> <div></div> <div>84%</div> <div>7%</div> <div>8%</div> </div> </div>

The following table lists non-polymeric compounds, carbohydrate monomers and non-standard residues in protein, DNA, RNA chains that are outliers for geometric or electron-density-fit crite-

ria:

Mol	Type	Chain	Res	Chirality	Geometry	Clashes	Electron density
5	UNX	A	533	-	-	-	X
5	UNX	A	534	-	-	-	X
5	UNX	A	535	-	-	-	X
5	UNX	A	536	-	-	-	X
5	UNX	A	537	-	-	-	X
5	UNX	A	538	-	-	-	X
5	UNX	A	539	-	-	-	X
5	UNX	A	542	-	-	-	X
5	UNX	A	543	-	-	-	X
5	UNX	A	544	-	-	-	X
5	UNX	A	545	-	-	-	X
5	UNX	A	546	-	-	-	X
5	UNX	A	547	-	-	-	X
5	UNX	A	548	-	-	-	X
5	UNX	B	533	-	-	-	X
5	UNX	B	534	-	-	-	X
5	UNX	B	535	-	-	-	X
5	UNX	B	536	-	-	-	X
5	UNX	B	537	-	-	-	X
5	UNX	B	538	-	-	-	X
5	UNX	B	539	-	-	-	X
5	UNX	B	540	-	-	-	X
5	UNX	B	542	-	-	-	X
5	UNX	B	543	-	-	-	X
5	UNX	C	533	-	-	-	X
5	UNX	C	534	-	-	-	X
5	UNX	C	535	-	-	-	X
5	UNX	C	536	-	-	-	X
5	UNX	C	537	-	-	-	X
5	UNX	C	538	-	-	-	X
5	UNX	C	539	-	-	-	X
5	UNX	C	540	-	-	-	X
5	UNX	C	542	-	-	-	X
5	UNX	C	543	-	-	-	X
5	UNX	C	544	-	-	-	X
5	UNX	D	533	-	-	-	X
5	UNX	D	534	-	-	-	X
5	UNX	D	535	-	-	-	X
5	UNX	D	536	-	-	-	X
5	UNX	D	537	-	-	-	X
5	UNX	D	538	-	-	-	X
5	UNX	D	539	-	-	-	X

2 Entry composition

There are 6 unique types of molecules in this entry. The entry contains 16045 atoms, of which 0 are hydrogens and 0 are deuteriums.

In the tables below, the ZeroOcc column contains the number of atoms modelled with zero occupancy, the AltConf column contains the number of residues with at least one atom in alternate conformation and the Trace column contains the number of residues modelled with at most 2 atoms.

- Molecule 1 is a protein called Pyruvate kinase isozymes M1/M2.

Mol	Chain	Residues	Atoms					ZeroOcc	AltConf	Trace
1	A	518	Total	C	N	O	S	0	0	0
			3854	2427	676	726	25			
1	B	498	Total	C	N	O	S	0	1	0
			3702	2323	664	691	24			
1	C	517	Total	C	N	O	S	0	0	0
			3866	2436	680	726	24			
1	D	504	Total	C	N	O	S	0	3	0
			3745	2360	663	698	24			

There are 76 discrepancies between the modelled and reference sequences:

Chain	Residue	Modelled	Actual	Comment	Reference
A	-18	MET	-	expression tag	UNP P14618
A	-17	GLY	-	expression tag	UNP P14618
A	-16	SER	-	expression tag	UNP P14618
A	-15	SER	-	expression tag	UNP P14618
A	-14	HIS	-	expression tag	UNP P14618
A	-13	HIS	-	expression tag	UNP P14618
A	-12	HIS	-	expression tag	UNP P14618
A	-11	HIS	-	expression tag	UNP P14618
A	-10	HIS	-	expression tag	UNP P14618
A	-9	HIS	-	expression tag	UNP P14618
A	-8	SER	-	expression tag	UNP P14618
A	-7	SER	-	expression tag	UNP P14618
A	-6	GLY	-	expression tag	UNP P14618
A	-5	LEU	-	expression tag	UNP P14618
A	-4	VAL	-	expression tag	UNP P14618
A	-3	PRO	-	expression tag	UNP P14618
A	-2	ARG	-	expression tag	UNP P14618
A	-1	GLY	-	expression tag	UNP P14618
A	0	SER	-	expression tag	UNP P14618
B	-18	MET	-	expression tag	UNP P14618
B	-17	GLY	-	expression tag	UNP P14618

Continued on next page...

Continued from previous page...

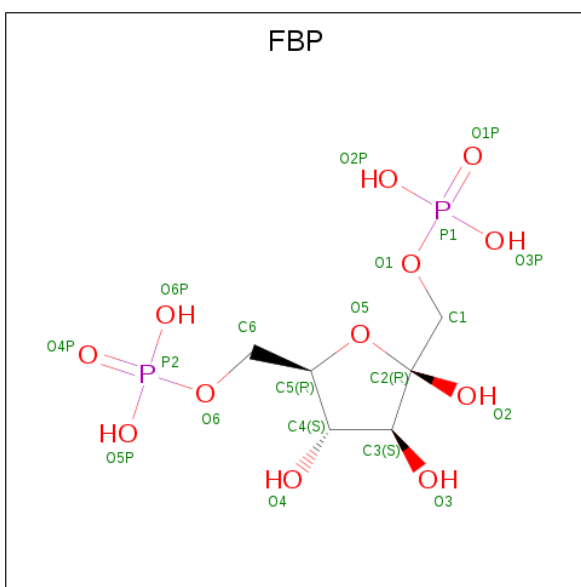
Chain	Residue	Modelled	Actual	Comment	Reference
B	-16	SER	-	expression tag	UNP P14618
B	-15	SER	-	expression tag	UNP P14618
B	-14	HIS	-	expression tag	UNP P14618
B	-13	HIS	-	expression tag	UNP P14618
B	-12	HIS	-	expression tag	UNP P14618
B	-11	HIS	-	expression tag	UNP P14618
B	-10	HIS	-	expression tag	UNP P14618
B	-9	HIS	-	expression tag	UNP P14618
B	-8	SER	-	expression tag	UNP P14618
B	-7	SER	-	expression tag	UNP P14618
B	-6	GLY	-	expression tag	UNP P14618
B	-5	LEU	-	expression tag	UNP P14618
B	-4	VAL	-	expression tag	UNP P14618
B	-3	PRO	-	expression tag	UNP P14618
B	-2	ARG	-	expression tag	UNP P14618
B	-1	GLY	-	expression tag	UNP P14618
B	0	SER	-	expression tag	UNP P14618
C	-18	MET	-	expression tag	UNP P14618
C	-17	GLY	-	expression tag	UNP P14618
C	-16	SER	-	expression tag	UNP P14618
C	-15	SER	-	expression tag	UNP P14618
C	-14	HIS	-	expression tag	UNP P14618
C	-13	HIS	-	expression tag	UNP P14618
C	-12	HIS	-	expression tag	UNP P14618
C	-11	HIS	-	expression tag	UNP P14618
C	-10	HIS	-	expression tag	UNP P14618
C	-9	HIS	-	expression tag	UNP P14618
C	-8	SER	-	expression tag	UNP P14618
C	-7	SER	-	expression tag	UNP P14618
C	-6	GLY	-	expression tag	UNP P14618
C	-5	LEU	-	expression tag	UNP P14618
C	-4	VAL	-	expression tag	UNP P14618
C	-3	PRO	-	expression tag	UNP P14618
C	-2	ARG	-	expression tag	UNP P14618
C	-1	GLY	-	expression tag	UNP P14618
C	0	SER	-	expression tag	UNP P14618
D	-18	MET	-	expression tag	UNP P14618
D	-17	GLY	-	expression tag	UNP P14618
D	-16	SER	-	expression tag	UNP P14618
D	-15	SER	-	expression tag	UNP P14618
D	-14	HIS	-	expression tag	UNP P14618
D	-13	HIS	-	expression tag	UNP P14618

Continued on next page...

Chain	Residue	Modelled	Actual	Comment	Reference
D	-12	HIS	-	expression tag	UNP P14618
D	-11	HIS	-	expression tag	UNP P14618
D	-10	HIS	-	expression tag	UNP P14618
D	-9	HIS	-	expression tag	UNP P14618
D	-8	SER	-	expression tag	UNP P14618
D	-7	SER	-	expression tag	UNP P14618
D	-6	GLY	-	expression tag	UNP P14618
D	-5	LEU	-	expression tag	UNP P14618
D	-4	VAL	-	expression tag	UNP P14618
D	-3	PRO	-	expression tag	UNP P14618
D	-2	ARG	-	expression tag	UNP P14618
D	-1	GLY	-	expression tag	UNP P14618
D	0	SER	-	expression tag	UNP P14618

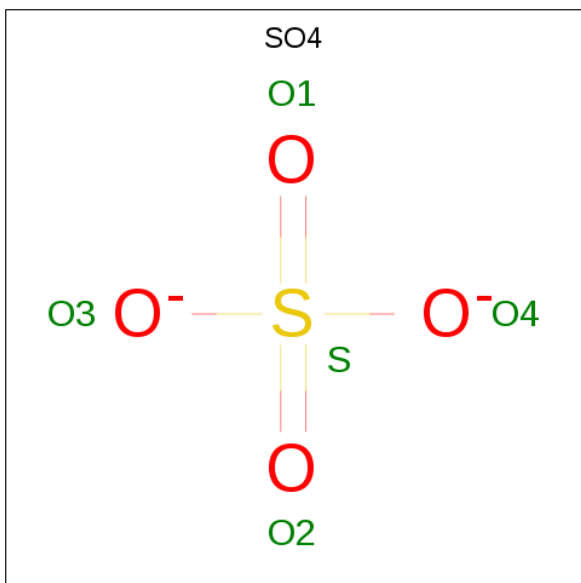
- [illegible]

- Molecule 3 is 1,6-di-O-phosphono-beta-D-fructofuranose (three-letter code: FBP) (formula: $\text{C}_6\text{H}_{14}\text{O}_{12}\text{P}_2$).



Mol	Chain	Residues	Atoms				ZeroOcc	AltConf
3	A	1	Total	C	O	P	0	0
			20	6	12	2		
3	B	1	Total	C	O	P	0	0
			20	6	12	2		
3	C	1	Total	C	O	P	0	0
			20	6	12	2		
3	D	1	Total	C	O	P	0	0
			20	6	12	2		

- Molecule 4 is SULFATE ION (three-letter code: SO₄) (formula: O₄S).



Mol	Chain	Residues	Atoms	ZeroOcc	AltConf
4	A	1	Total O S 5 4 1	0	0
4	B	1	Total O S 5 4 1	0	0
4	C	1	Total O S 5 4 1	0	0
4	D	1	Total O S 5 4 1	0	0

- Molecule 5 is UNKNOWN ATOM OR ION (three-letter code: UNX) (formula: X).

Mol	Chain	Residues	Atoms	ZeroOcc	AltConf
5	B	10	Total X 10 10	0	0
5	A	14	Total X 14 14	0	0
5	D	7	Total X 7 7	0	0
5	C	11	Total X 11 11	0	0

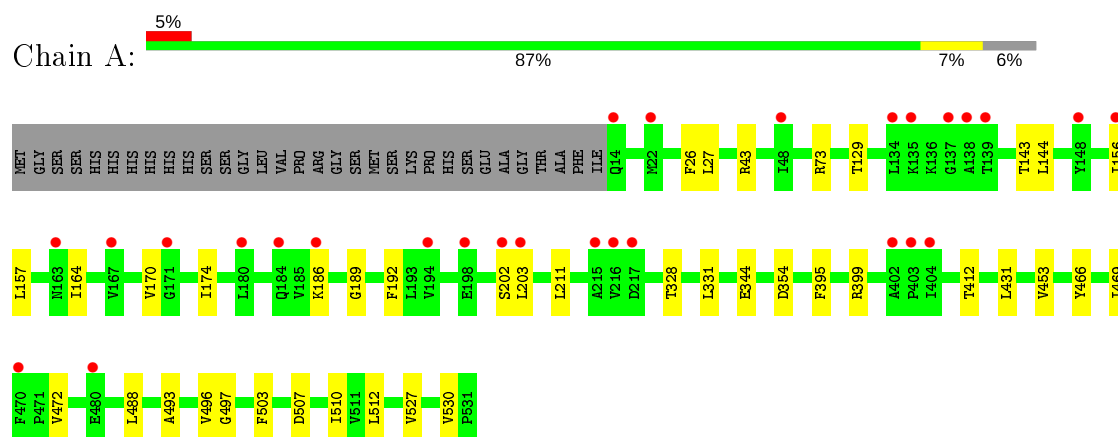
- Molecule 6 is water.

Mol	Chain	Residues	Atoms	ZeroOcc	AltConf
6	A	185	Total O 186 186	0	1
6	B	171	Total O 171 171	0	0
6	C	166	Total O 166 166	0	0
6	D	153	Total O 153 153	0	0

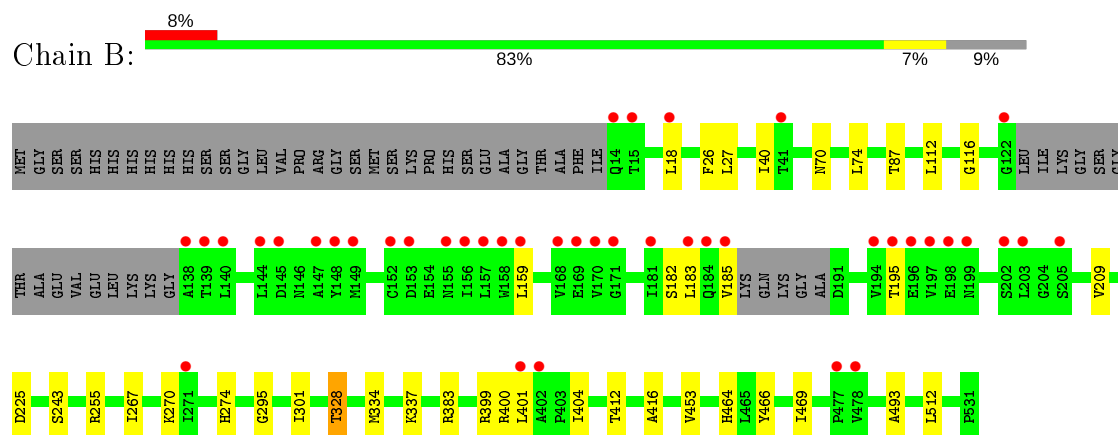
3 Residue-property plots [i](#)

These plots are drawn for all protein, RNA, DNA and oligosaccharide chains in the entry. The first graphic for a chain summarises the proportions of the various outlier classes displayed in the second graphic. The second graphic shows the sequence view annotated by issues in geometry and electron density. Residues are color-coded according to the number of geometric quality criteria for which they contain at least one outlier: green = 0, yellow = 1, orange = 2 and red = 3 or more. A red dot above a residue indicates a poor fit to the electron density ($RSRZ > 2$). Stretches of 2 or more consecutive residues without any outlier are shown as a green connector. Residues present in the sample, but not in the model, are shown in grey.

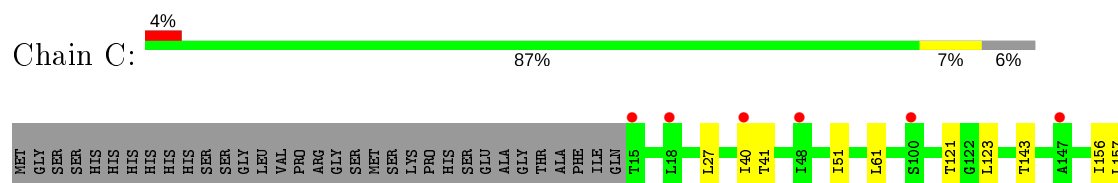
- Molecule 1: Pyruvate kinase isozymes M1/M2

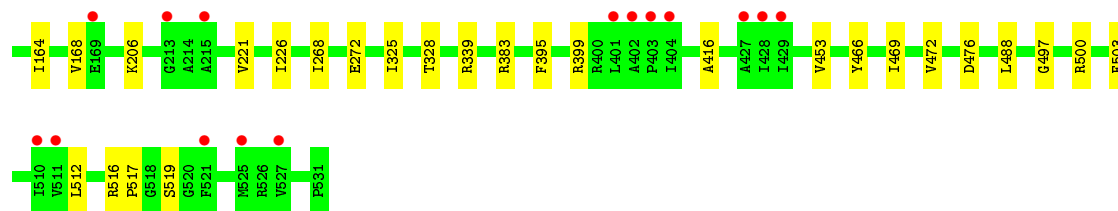


- Molecule 1: Pyruvate kinase isozymes M1/M2

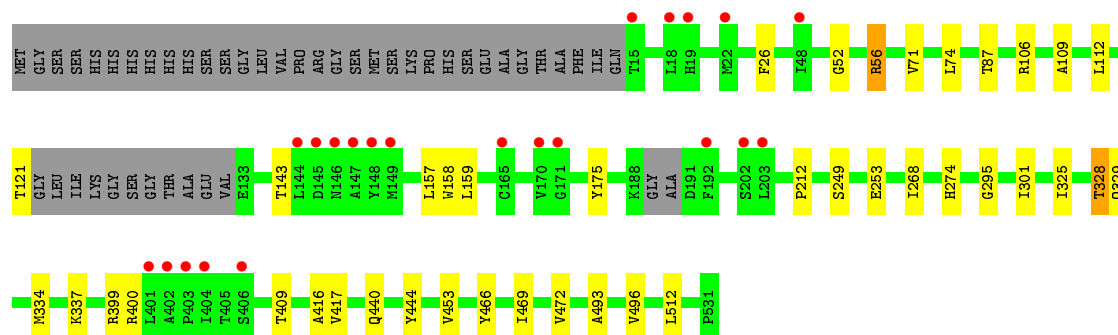
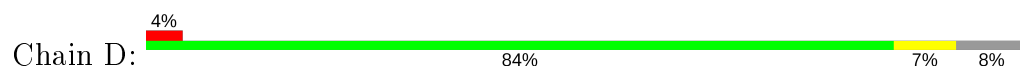


- Molecule 1: Pyruvate kinase isozymes M1/M2





● Molecule 1: Pyruvate kinases M1/M2



4 Data and refinement statistics

Property	Value	Source
Space group	P 1 21 1	Depositor
Cell constants a, b, c, α , β , γ	80.88 Å 152.56 Å 93.04 Å 90.00° 103.17° 90.00°	Depositor
Resolution (Å)	26.71 – 1.95 26.71 – 1.95	Depositor EDS
% Data completeness (in resolution range)	99.7 (26.71-1.95) 99.7 (26.71-1.95)	Depositor EDS
R_{merge}	0.08	Depositor
R_{sym}	(Not available)	Depositor
$\langle I/\sigma(I) \rangle$ ¹	1.96 (at 1.95 Å)	Xtriage
Refinement program	REFMAC 5.5.0102	Depositor
R, R_{free}	0.219 , 0.262 0.219 , 0.257	Depositor DCC
R_{free} test set	1914 reflections (1.21%)	wwPDB-VP
Wilson B-factor (Å ²)	30.0	Xtriage
Anisotropy	0.009	Xtriage
Bulk solvent k_{sol} (e/Å ³), B_{sol} (Å ²)	0.35 , 51.4	EDS
L-test for twinning ²	$\langle L \rangle = 0.51$, $\langle L^2 \rangle = 0.35$	Xtriage
Estimated twinning fraction	No twinning to report.	Xtriage
F_o, F_c correlation	0.95	EDS
Total number of atoms	16045	wwPDB-VP
Average B, all atoms (Å ²)	29.0	wwPDB-VP

Xtriage's analysis on translational NCS is as follows: *The largest off-origin peak in the Patterson function is 3.31% of the height of the origin peak. No significant pseudotranslation is detected.*

¹Intensities estimated from amplitudes.

²Theoretical values of $\langle |L| \rangle$, $\langle L^2 \rangle$ for acentric reflections are 0.5, 0.333 respectively for untwinned datasets, and 0.375, 0.2 for perfectly twinned datasets.

5 Model quality

5.1 Standard geometry

Bond lengths and bond angles in the following residue types are not validated in this section: UNX, FBP, SO4, 3SZ

The Z score for a bond length (or angle) is the number of standard deviations the observed value is removed from the expected value. A bond length (or angle) with $|Z| > 5$ is considered an outlier worth inspection. RMSZ is the root-mean-square of all Z scores of the bond lengths (or angles).

Mol	Chain	Bond lengths		Bond angles	
		RMSZ	$\# Z > 5$	RMSZ	$\# Z > 5$
1	A	0.66	0/3918	0.70	4/5311 (0.1%)
1	B	0.67	0/3765	0.72	0/5103
1	C	0.67	0/3930	0.68	0/5325
1	D	0.66	0/3816	0.68	0/5176
All	All	0.67	0/15429	0.70	4/20915 (0.0%)

There are no bond length outliers.

All (4) bond angle outliers are listed below:

Mol	Chain	Res	Type	Atoms	Z	Observed(°)	Ideal(°)
1	A	73	ARG	NE-CZ-NH1	7.24	123.92	120.30
1	A	431	LEU	CA-CB-CG	6.12	129.37	115.30
1	A	354	ASP	CB-CG-OD1	5.12	122.91	118.30
1	A	43	ARG	NE-CZ-NH2	-5.02	117.79	120.30

There are no chirality outliers.

There are no planarity outliers.

5.2 Too-close contacts

In the following table, the Non-H and H(model) columns list the number of non-hydrogen atoms and hydrogen atoms in the chain respectively. The H(added) column lists the number of hydrogen atoms added and optimized by MolProbity. The Clashes column lists the number of clashes within the asymmetric unit, whereas Symm-Clashes lists symmetry related clashes.

Mol	Chain	Non-H	H(model)	H(added)	Clashes	Symm-Clashes
1	A	3854	0	3804	19	0
1	B	3702	0	3627	26	0
1	C	3866	0	3846	22	0

Continued on next page...

Continued from previous page...

Mol	Chain	Non-H	H(model)	H(added)	Clashes	Symm-Clashes
1	D	3745	0	3657	26	0
2	A	30	0	23	4	0
2	D	30	0	23	2	0
3	A	20	0	10	0	0
3	B	20	0	10	0	0
3	C	20	0	10	0	0
3	D	20	0	10	0	0
4	A	5	0	0	0	0
4	B	5	0	0	0	0
4	C	5	0	0	0	0
4	D	5	0	0	0	0
5	A	14	0	0	0	0
5	B	10	0	0	0	0
5	C	11	0	0	0	0
5	D	7	0	0	0	0
6	A	186	0	0	0	0
6	B	171	0	0	1	0
6	C	166	0	0	0	0
6	D	153	0	0	1	0
All	All	16045	0	15020	91	0

The all-atom clashscore is defined as the number of clashes found per 1000 atoms (including hydrogen atoms). The all-atom clashscore for this structure is 3.

All (91) close contacts within the same asymmetric unit are listed below, sorted by their clash magnitude.

Atom-1	Atom-2	Interatomic distance (Å)	Clash overlap (Å)
1:C:395:PHE:CZ	1:C:399:ARG:HD2	2.07	0.88
1:C:416:ALA:HB2	1:C:512:LEU:HD21	1.76	0.67
1:D:409:THR:CG2	1:D:440:GLN:OE1	2.42	0.67
1:A:144:LEU:HD11	1:A:164:ILE:HG22	1.79	0.64
1:D:472:VAL:HG11	1:D:496:VAL:HG11	1.79	0.63
1:A:395:PHE:CZ	1:A:399:ARG:HD2	2.34	0.63
1:B:112:LEU:C	1:B:112:LEU:HD23	2.20	0.62
1:D:409:THR:HG21	1:D:440:GLN:OE1	1.99	0.62
1:B:399:ARG:NH2	1:D:399:ARG:CD	2.65	0.60
1:B:182:SER:O	1:B:183:LEU:HD23	2.02	0.60
1:C:416:ALA:CB	1:C:512:LEU:HD21	2.33	0.58
1:C:488:LEU:O	1:C:488:LEU:HD23	2.06	0.56
1:A:27:LEU:HD23	1:B:401:LEU:HD12	1.87	0.55
1:D:328:THR:HG22	1:D:329:GLN:HG3	1.88	0.54

Continued on next page...

Continued from previous page...

Atom-1	Atom-2	Interatomic distance (Å)	Clash overlap (Å)
1:B:412:THR:HG22	1:B:512:LEU:HD22	1.89	0.54
1:D:106[B]:ARG:CG	6:D:605:HOH:O	2.55	0.54
1:C:466:TYR:HB2	1:C:469:ILE:HD12	1.90	0.53
2:A:540:3SZ:CAN	1:B:27:LEU:HD13	2.37	0.53
1:A:466:TYR:HB2	1:A:469:ILE:HD12	1.92	0.52
1:C:497:GLY:HA3	1:C:503:PHE:CZ	2.45	0.52
1:D:249:SER:O	1:D:253:GLU:HG3	2.09	0.51
1:D:466:TYR:HB2	1:D:469:ILE:HD12	1.93	0.51
1:C:395:PHE:CE2	1:C:399:ARG:HD2	2.45	0.50
1:C:488:LEU:C	1:C:488:LEU:HD23	2.32	0.50
1:B:116:GLY:HA2	1:B:225:ASP:OD2	2.12	0.50
1:B:453:VAL:HG21	1:B:493:ALA:HB2	1.93	0.50
1:C:395:PHE:CE1	1:C:399:ARG:HD2	2.47	0.49
1:C:121:THR:HB	1:C:157:LEU:HD11	1.95	0.49
1:D:274:HIS:CE1	1:D:301:ILE:HG22	2.48	0.49
1:C:123:LEU:HD21	1:C:206:LYS:HE3	1.95	0.48
1:A:453:VAL:HG21	1:A:493:ALA:HB2	1.97	0.47
1:C:453:VAL:HG22	1:C:472:VAL:CG2	2.45	0.47
2:A:540:3SZ:HAMA	1:B:26:PHE:CZ	2.49	0.46
1:B:255:ARG:CZ	1:B:267:ILE:HD12	2.45	0.46
1:D:175:TYR:CE1	1:D:212:PRO:HG3	2.51	0.46
1:D:74:LEU:HD21	1:D:87:THR:HG21	1.97	0.46
1:A:507:ASP:O	1:A:530:VAL:HG23	2.16	0.46
1:C:27:LEU:HD13	2:D:540:3SZ:CAN	2.46	0.46
1:D:268:ILE:HG21	1:D:325:ILE:HD12	1.97	0.46
1:C:476:ASP:OD2	1:C:488:LEU:HD21	2.16	0.46
1:A:143:THR:HG21	1:A:156:ILE:HD11	1.97	0.45
1:B:112:LEU:CD2	1:B:112:LEU:C	2.85	0.45
1:A:510:ILE:HD12	1:A:527:VAL:HG22	1.98	0.45
1:D:121:THR:HB	1:D:157:LEU:HD11	1.99	0.45
1:A:472:VAL:HG11	1:A:496:VAL:HG11	1.97	0.45
1:B:416:ALA:HB2	1:B:512:LEU:HD21	1.98	0.45
1:C:516:ARG:HB2	1:C:517:PRO:CD	2.47	0.45
1:D:409:THR:HG22	1:D:440:GLN:OE1	2.13	0.45
1:D:52:GLY:O	1:D:56:ARG:HB3	2.17	0.45
1:A:412:THR:HG22	1:A:512:LEU:CD2	2.48	0.44
1:D:295:GLY:CA	1:D:328:THR:HG21	2.48	0.44
1:D:416:ALA:HB2	1:D:512:LEU:HD21	1.99	0.44
1:B:404:ILE:HD12	1:B:404:ILE:N	2.33	0.44
1:C:268:ILE:HG21	1:C:325:ILE:HD12	1.99	0.44
1:B:466:TYR:HB2	1:B:469:ILE:HD12	1.99	0.44

Continued on next page...

Continued from previous page...

Atom-1	Atom-2	Interatomic distance (Å)	Clash overlap (Å)
1:A:497:GLY:HA3	1:A:503:PHE:CZ	2.54	0.43
1:C:51:ILE:HD12	1:C:61:LEU:HD21	2.01	0.43
1:D:417:VAL:HG21	1:D:444:TYR:HB2	1.99	0.43
1:A:157:LEU:HD13	1:A:203:LEU:HD21	2.01	0.43
1:B:185:VAL:HA	1:B:195:THR:HG22	1.99	0.43
1:B:40:ILE:O	1:B:383:ARG:HD2	2.18	0.43
1:A:26:PHE:CE1	2:A:540:3SZ:HAPA	2.54	0.43
1:B:274:HIS:HB2	6:B:594:HOH:O	2.18	0.42
1:A:174:ILE:HG12	1:A:211:LEU:HD22	2.02	0.42
1:A:453:VAL:CG2	1:A:493:ALA:HB2	2.48	0.42
1:B:453:VAL:CG2	1:B:493:ALA:HB2	2.49	0.42
1:B:334:MET:HA	1:B:337:LYS:O	2.20	0.42
1:D:334:MET:HA	1:D:337:LYS:O	2.20	0.42
1:B:18:LEU:HA	1:B:18:LEU:HD23	1.84	0.42
1:C:143:THR:CG2	1:C:156:ILE:HD11	2.50	0.42
1:D:453:VAL:HG21	1:D:493:ALA:HB2	2.00	0.42
1:C:164:ILE:O	1:C:168:VAL:HG22	2.19	0.42
1:A:170:VAL:HG13	1:A:186:LYS:O	2.20	0.41
1:A:189:GLY:HA3	1:A:192:PHE:CZ	2.56	0.41
1:D:143:THR:O	1:D:158:TRP:HA	2.20	0.41
1:D:26:PHE:CG	2:D:540:3SZ:HAR	2.55	0.41
1:D:121:THR:HG22	1:D:159:LEU:CD2	2.51	0.41
1:C:40:ILE:O	1:C:383:ARG:HD2	2.21	0.41
1:C:221:VAL:HG12	1:C:226:ILE:HG13	2.03	0.41
1:D:71:VAL:HG22	1:D:109:ALA:HB3	2.02	0.41
1:B:295:GLY:CA	1:B:328:THR:HG21	2.51	0.41
1:A:488:LEU:C	1:A:488:LEU:HD23	2.41	0.40
1:D:112:LEU:HD23	1:D:112:LEU:C	2.41	0.40
1:A:331:LEU:HD23	1:A:344:GLU:HB3	2.03	0.40
1:B:74:LEU:HD21	1:B:87:THR:CG2	2.50	0.40
1:C:41:THR:HG21	1:C:500:ARG:O	2.20	0.40
1:D:453:VAL:CG2	1:D:493:ALA:HB2	2.51	0.40
1:B:159:LEU:CD2	1:B:209:VAL:HG21	2.51	0.40
1:B:70:ASN:HB3	1:B:464:HIS:CG	2.56	0.40
2:A:540:3SZ:HAS	1:B:26:PHE:CG	2.56	0.40
1:B:243:SER:HA	1:B:270:LYS:HD3	2.03	0.40

There are no symmetry-related clashes.

5.3 Torsion angles

5.3.1 Protein backbone

In the following table, the Percentiles column shows the percent Ramachandran outliers of the chain as a percentile score with respect to all X-ray entries followed by that with respect to entries of similar resolution.

The Analysed column shows the number of residues for which the backbone conformation was analysed, and the total number of residues.

Mol	Chain	Analysed	Favoured	Allowed	Outliers	Percentiles	
1	A	516/550 (94%)	504 (98%)	11 (2%)	1 (0%)	47	38
1	B	493/550 (90%)	482 (98%)	10 (2%)	1 (0%)	47	38
1	C	515/550 (94%)	505 (98%)	9 (2%)	1 (0%)	47	38
1	D	501/550 (91%)	490 (98%)	10 (2%)	1 (0%)	47	38
All	All	2025/2200 (92%)	1981 (98%)	40 (2%)	4 (0%)	47	38

All (4) Ramachandran outliers are listed below:

Mol	Chain	Res	Type
1	A	328	THR
1	B	328	THR
1	C	328	THR
1	D	328	THR

5.3.2 Protein sidechains

In the following table, the Percentiles column shows the percent sidechain outliers of the chain as a percentile score with respect to all X-ray entries followed by that with respect to entries of similar resolution.

The Analysed column shows the number of residues for which the sidechain conformation was analysed, and the total number of residues.

Mol	Chain	Analysed	Rotameric	Outliers	Percentiles	
1	A	392/452 (87%)	390 (100%)	2 (0%)	88	88
1	B	372/452 (82%)	370 (100%)	2 (0%)	88	88
1	C	397/452 (88%)	394 (99%)	3 (1%)	81	80
1	D	374/452 (83%)	372 (100%)	2 (0%)	88	88
All	All	1535/1808 (85%)	1526 (99%)	9 (1%)	86	85

All (9) residues with a non-rotameric sidechain are listed below:

Mol	Chain	Res	Type
1	A	129	THR
1	A	202	SER
1	B	301	ILE
1	B	400	ARG
1	C	272	GLU
1	C	339	ARG
1	C	519	SER
1	D	56	ARG
1	D	400	ARG

Some sidechains can be flipped to improve hydrogen bonding and reduce clashes. All (1) such sidechains are listed below:

Mol	Chain	Res	Type
1	D	184	GLN

5.3.3 RNA [i](#)

There are no RNA molecules in this entry.

5.4 Non-standard residues in protein, DNA, RNA chains [i](#)

There are no non-standard protein/DNA/RNA residues in this entry.

5.5 Carbohydrates [i](#)

There are no monosaccharides in this entry.

5.6 Ligand geometry [i](#)

Of 52 ligands modelled in this entry, 42 are unknown - leaving 10 for Mogul analysis.

In the following table, the Counts columns list the number of bonds (or angles) for which Mogul statistics could be retrieved, the number of bonds (or angles) that are observed in the model and the number of bonds (or angles) that are defined in the Chemical Component Dictionary. The Link column lists molecule types, if any, to which the group is linked. The Z score for a bond length (or angle) is the number of standard deviations the observed value is removed from the expected value. A bond length (or angle) with $|Z| > 2$ is considered an outlier worth inspection. RMSZ is the root-mean-square of all Z scores of the bond lengths (or angles).

Mol	Type	Chain	Res	Link	Bond lengths			Bond angles		
					Counts	RMSZ	# Z > 2	Counts	RMSZ	# Z > 2
4	SO4	D	532	-	4,4,4	0.19	0	6,6,6	0.30	0
3	FBP	A	541	-	18,20,20	0.86	1 (5%)	23,32,32	1.04	2 (8%)
3	FBP	C	541	-	18,20,20	0.98	1 (5%)	23,32,32	1.10	2 (8%)
2	3SZ	D	540	-	33,33,33	2.45	9 (27%)	47,49,49	1.83	12 (25%)
4	SO4	A	532	-	4,4,4	0.22	0	6,6,6	0.37	0
3	FBP	B	541	-	18,20,20	0.78	0	23,32,32	1.08	2 (8%)
4	SO4	C	532	-	4,4,4	0.08	0	6,6,6	0.23	0
3	FBP	D	541	-	18,20,20	0.91	1 (5%)	23,32,32	1.07	0
4	SO4	B	532	-	4,4,4	0.30	0	6,6,6	0.27	0
2	3SZ	A	540	-	33,33,33	2.36	4 (12%)	47,49,49	2.07	9 (19%)

In the following table, the Chirals column lists the number of chiral outliers, the number of chiral centers analysed, the number of these observed in the model and the number defined in the Chemical Component Dictionary. Similar counts are reported in the Torsion and Rings columns. '-' means no outliers of that kind were identified.

Mol	Type	Chain	Res	Link	Chirals	Torsions	Rings
3	FBP	A	541	-	-	2/13/32/32	0/1/1/1
3	FBP	C	541	-	-	2/13/32/32	0/1/1/1
2	3SZ	D	540	-	-	4/24/42/42	0/4/4/4
3	FBP	B	541	-	-	2/13/32/32	0/1/1/1
2	3SZ	A	540	-	-	1/24/42/42	0/4/4/4
3	FBP	D	541	-	-	2/13/32/32	0/1/1/1

All (16) bond length outliers are listed below:

Mol	Chain	Res	Type	Atoms	Z	Observed(Å)	Ideal(Å)
2	D	540	3SZ	OAB-SBC	6.94	1.51	1.43
2	A	540	3SZ	OAD-SBD	6.94	1.51	1.43
2	A	540	3SZ	OAB-SBC	6.79	1.51	1.43
2	A	540	3SZ	OAE-SBD	6.23	1.50	1.43
2	D	540	3SZ	OAD-SBD	6.00	1.50	1.43
2	A	540	3SZ	OAC-SBC	5.50	1.49	1.43
2	D	540	3SZ	OAC-SBC	5.11	1.49	1.43
2	D	540	3SZ	OAE-SBD	4.65	1.48	1.43
2	D	540	3SZ	CAX-SBD	-4.18	1.70	1.76
2	D	540	3SZ	SBC-NBA	4.12	1.69	1.63
3	C	541	FBP	O2-C2	3.21	1.46	1.40
2	D	540	3SZ	CAW-SBC	-3.17	1.72	1.76
3	D	541	FBP	O2-C2	3.04	1.45	1.40

Continued on next page...

Continued from previous page...

Mol	Chain	Res	Type	Atoms	Z	Observed(Å)	Ideal(Å)
3	A	541	FBP	O2-C2	2.25	1.44	1.40
2	D	540	3SZ	OAT-CAN	2.16	1.48	1.43
2	D	540	3SZ	CAP-NBA	-2.09	1.45	1.48

All (27) bond angle outliers are listed below:

Mol	Chain	Res	Type	Atoms	Z	Observed(°)	Ideal(°)
2	A	540	3SZ	OAC-SBC-OAB	-6.60	108.83	119.52
2	A	540	3SZ	CAW-SBC-NBA	6.33	114.85	107.30
2	A	540	3SZ	OAE-SBD-OAD	-5.46	110.67	119.52
2	A	540	3SZ	OAD-SBD-NBB	4.33	110.64	106.69
2	D	540	3SZ	OAE-SBD-OAD	-4.21	112.70	119.52
2	A	540	3SZ	CAX-SBD-NBB	3.88	111.93	107.30
2	D	540	3SZ	OAE-SBD-CAX	3.78	112.82	108.05
2	D	540	3SZ	OAC-SBC-OAB	-3.76	113.42	119.52
2	D	540	3SZ	CAW-SBC-NBA	3.63	111.63	107.30
2	D	540	3SZ	CAH-CAW-SBC	-3.59	115.98	119.76
2	D	540	3SZ	CAS-NBB-CAQ	3.52	126.65	115.19
2	D	540	3SZ	CAK-CAW-SBC	3.30	123.01	119.34
3	B	541	FBP	O6-P2-O4P	3.17	115.36	106.47
2	D	540	3SZ	OAC-SBC-CAW	2.92	111.74	108.05
2	A	540	3SZ	CAS-NBB-CAQ	2.77	124.20	115.19
2	D	540	3SZ	CAV-CAK-CAW	-2.73	117.94	120.05
3	A	541	FBP	O3P-P1-O1P	2.60	120.85	110.68
2	D	540	3SZ	OAD-SBD-NBB	2.58	109.04	106.69
3	C	541	FBP	O6-P2-O4P	2.57	113.68	106.47
2	A	540	3SZ	OAB-SBC-NBA	2.53	109.00	106.69
2	A	540	3SZ	CAK-CAW-SBC	2.38	121.99	119.34
2	A	540	3SZ	OAC-SBC-CAW	2.21	110.84	108.05
3	C	541	FBP	O5-C5-C6	2.19	114.28	109.45
2	D	540	3SZ	CAS-CAR-NBA	-2.13	108.86	112.26
3	B	541	FBP	P1-O1-C1	2.12	124.13	118.30
3	A	541	FBP	O6-P2-O4P	2.09	112.33	106.47
2	D	540	3SZ	CAN-OAT-CAY	2.01	117.12	113.65

There are no chirality outliers.

All (13) torsion outliers are listed below:

Mol	Chain	Res	Type	Atoms
3	B	541	FBP	C4-C5-C6-O6
3	A	541	FBP	C4-C5-C6-O6
3	C	541	FBP	C4-C5-C6-O6

Continued on next page...

Continued from previous page...

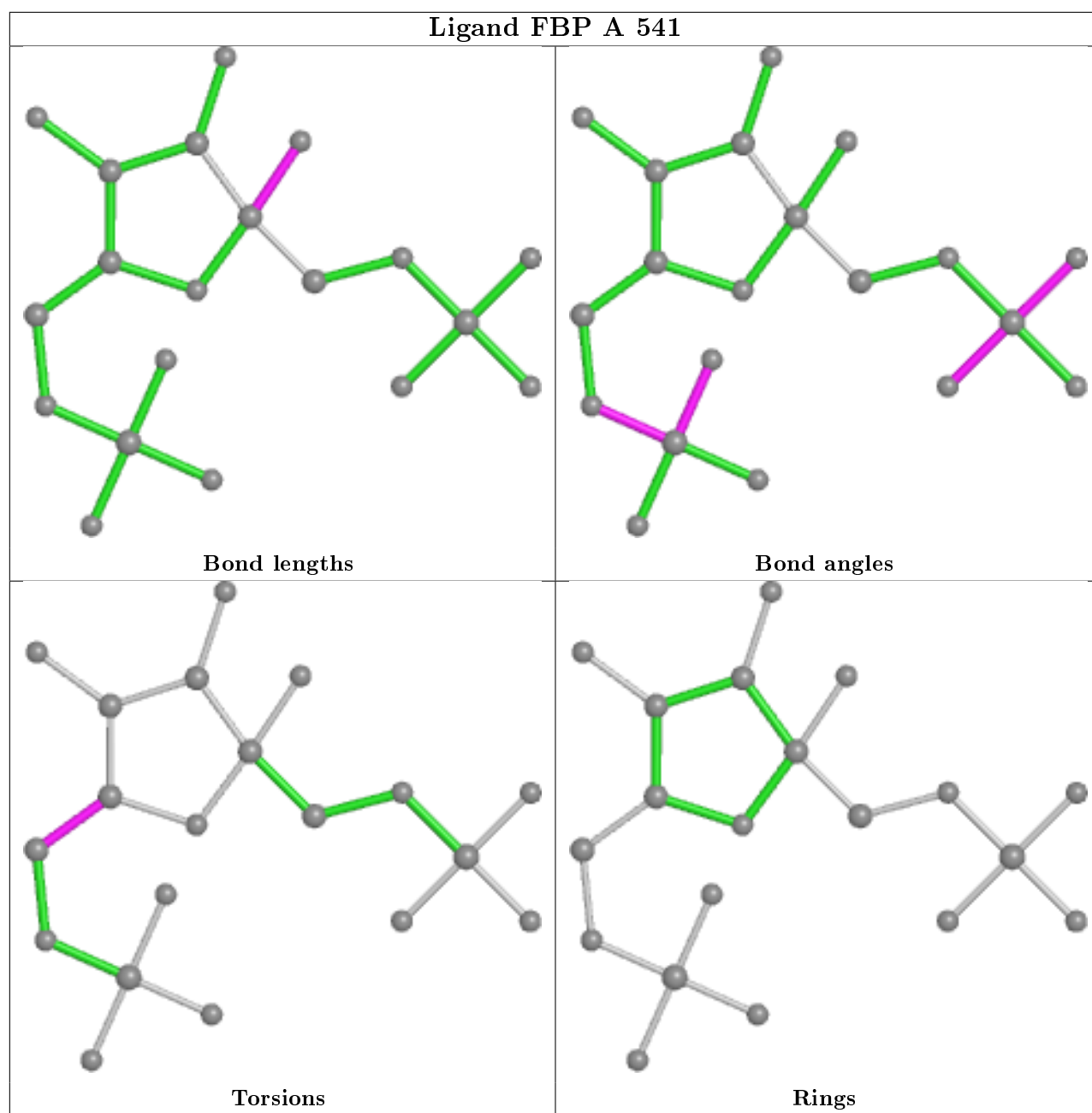
Mol	Chain	Res	Type	Atoms
3	D	541	FBP	C4-C5-C6-O6
3	B	541	FBP	O5-C5-C6-O6
3	A	541	FBP	O5-C5-C6-O6
3	C	541	FBP	O5-C5-C6-O6
2	D	540	3SZ	CAP-NBA-SBC-OAC
2	D	540	3SZ	CAQ-NBB-SBD-OAD
2	D	540	3SZ	CAS-NBB-SBD-OAE
3	D	541	FBP	O5-C5-C6-O6
2	D	540	3SZ	CAQ-NBB-SBD-CAX
2	A	540	3SZ	CAP-NBA-SBC-OAC

There are no ring outliers.

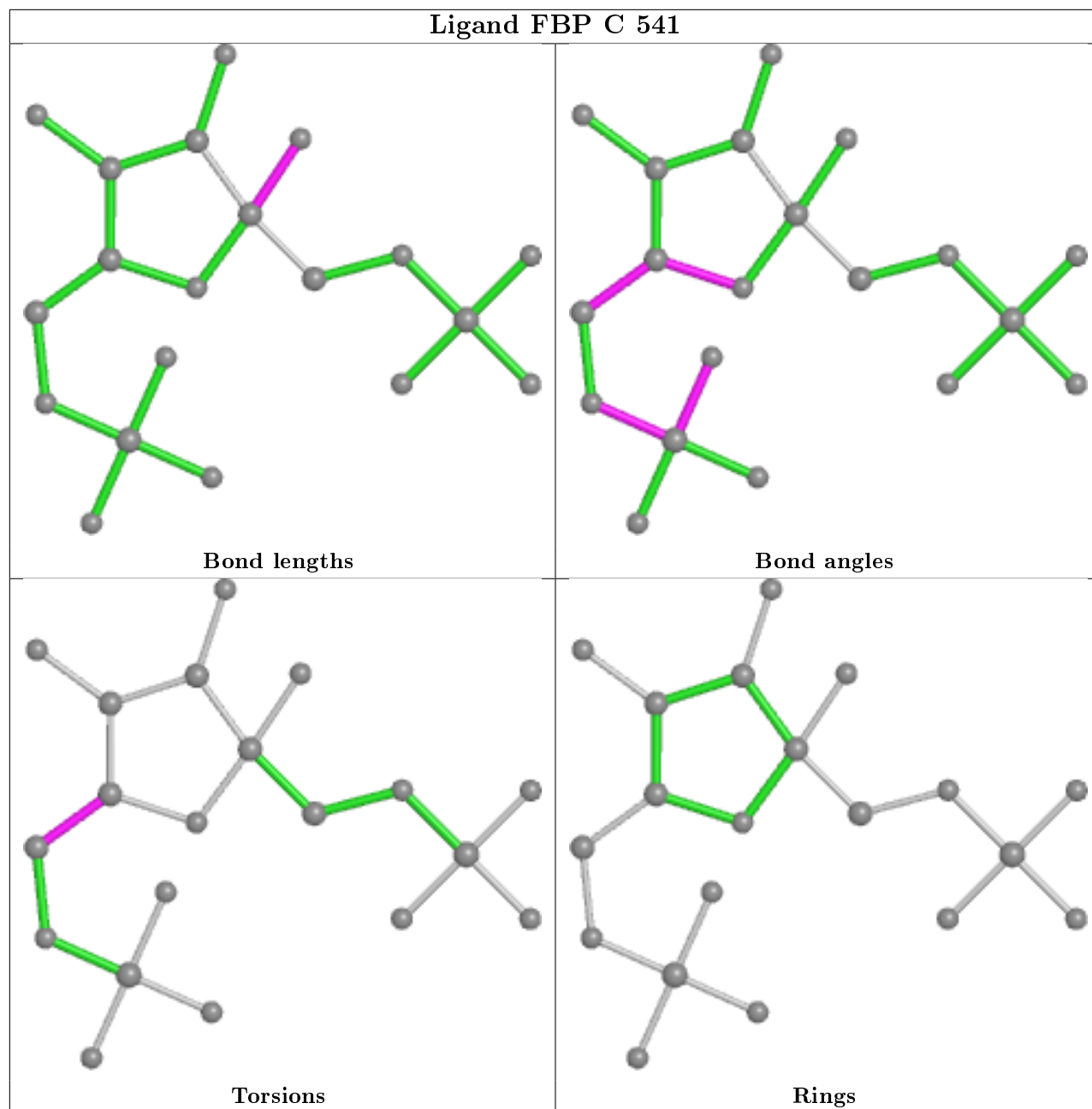
2 monomers are involved in 6 short contacts:

Mol	Chain	Res	Type	Clashes	Symm-Clashes
2	D	540	3SZ	2	0
2	A	540	3SZ	4	0

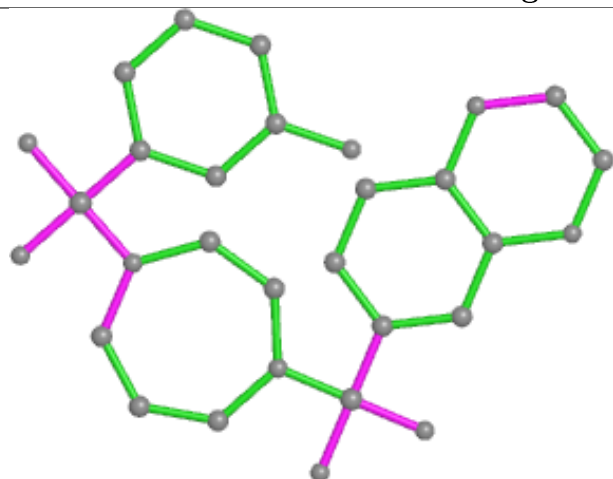
The following is a two-dimensional graphical depiction of Mogul quality analysis of bond lengths, bond angles, torsion angles, and ring geometry for all instances of the Ligand of Interest. In addition, ligands with molecular weight > 250 and outliers as shown on the validation Tables will also be included. For torsion angles, if less than 5% of the Mogul distribution of torsion angles is within 10 degrees of the torsion angle in question, then that torsion angle is considered an outlier. Any bond that is central to one or more torsion angles identified as an outlier by Mogul will be highlighted in the graph. For rings, the root-mean-square deviation (RMSD) between the ring in question and similar rings identified by Mogul is calculated over all ring torsion angles. If the average RMSD is greater than 60 degrees and the minimal RMSD between the ring in question and any Mogul-identified rings is also greater than 60 degrees, then that ring is considered an outlier. The outliers are highlighted in purple. The color gray indicates Mogul did not find sufficient equivalents in the CSD to analyse the geometry.



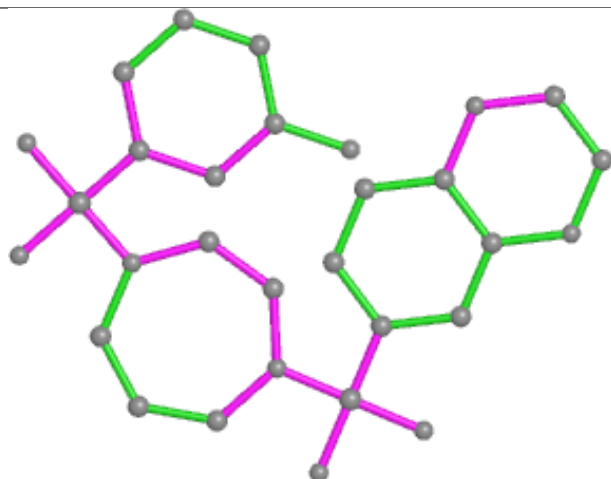
Ligand FBP C 541



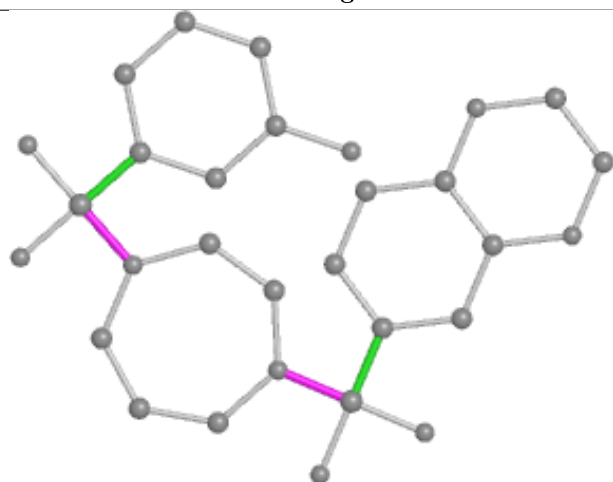
Ligand 3SZ D 540



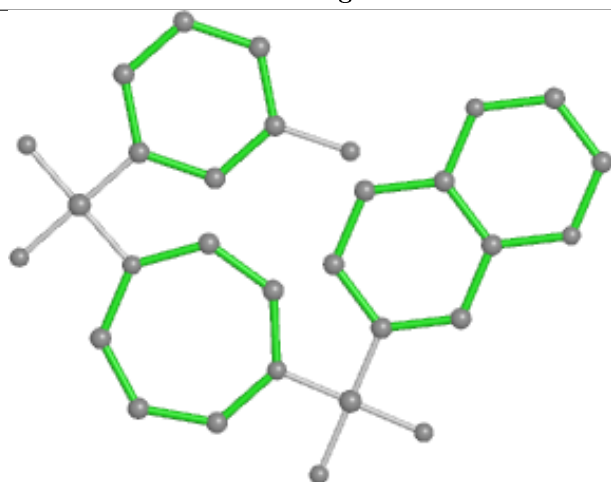
Bond lengths



Bond angles

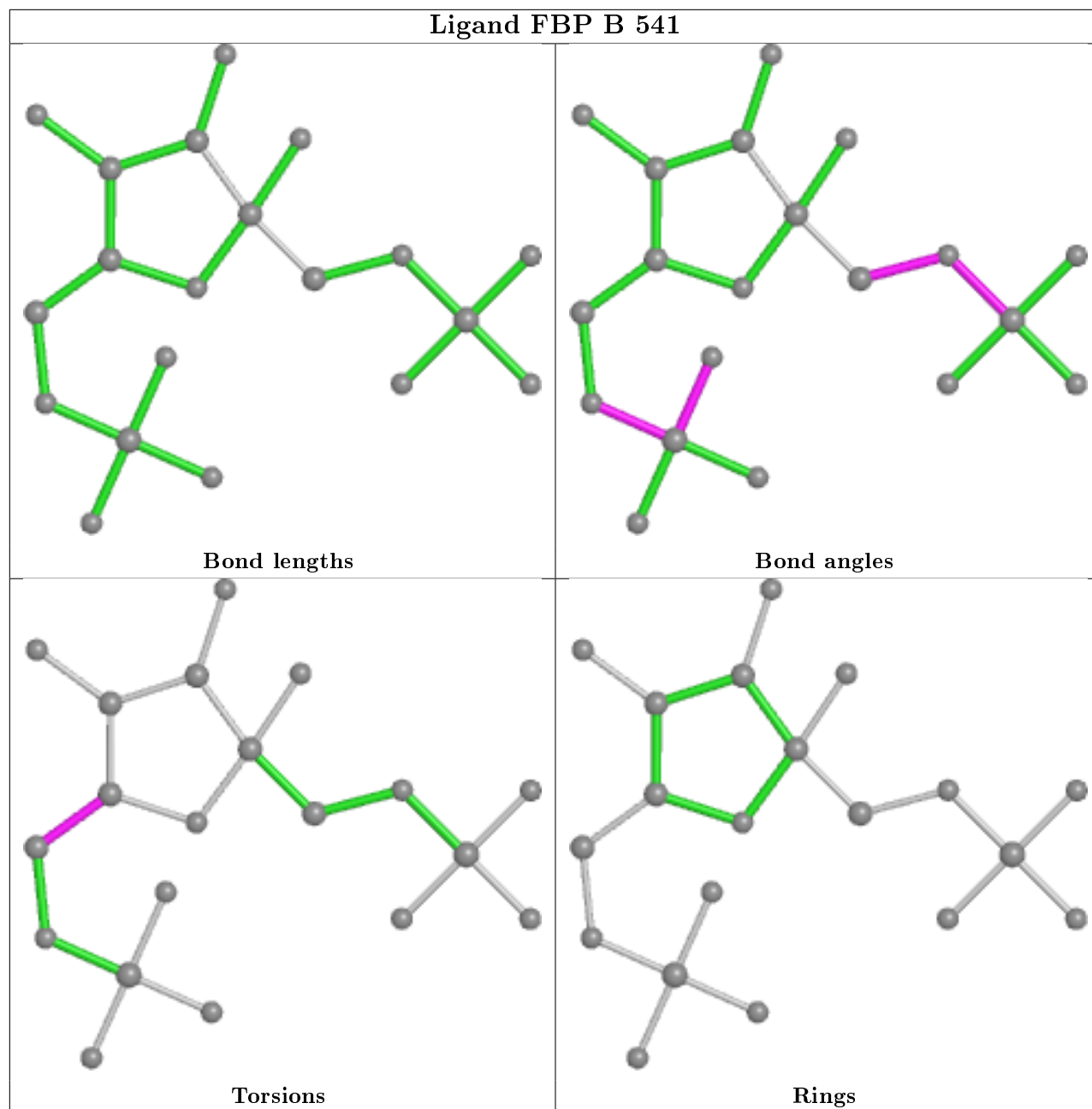


Torsions

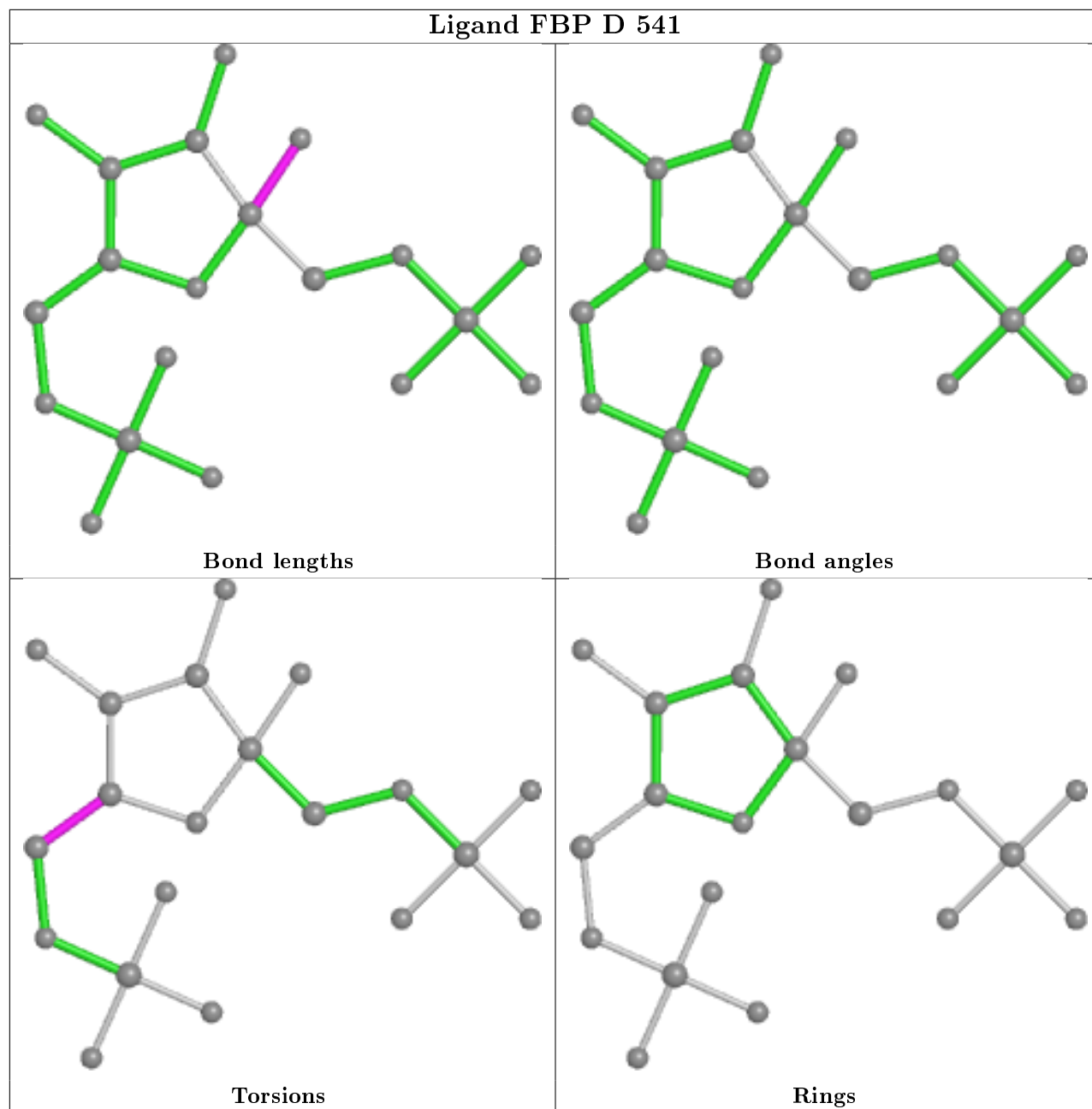


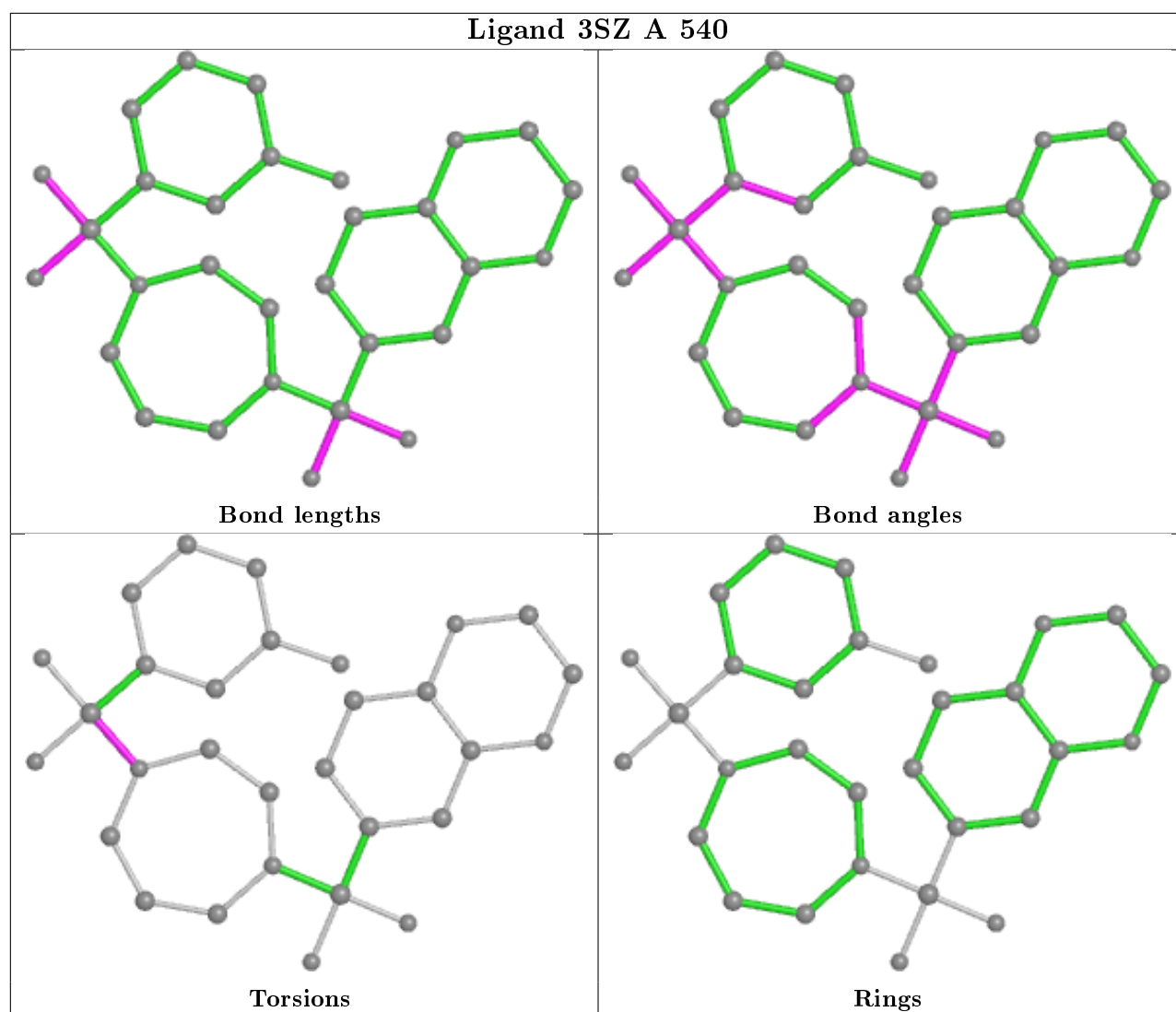
Rings

Ligand FBP B 541



Ligand FBP D 541





5.7 Other polymers [i](#)

There are no such residues in this entry.

5.8 Polymer linkage issues [i](#)

There are no chain breaks in this entry.

6 Fit of model and data ⓘ

6.1 Protein, DNA and RNA chains ⓘ

In the following table, the column labelled ‘#RSRZ> 2’ contains the number (and percentage) of RSRZ outliers, followed by percent RSRZ outliers for the chain as percentile scores relative to all X-ray entries and entries of similar resolution. The OWAB column contains the minimum, median, 95th percentile and maximum values of the occupancy-weighted average B-factor per residue. The column labelled ‘Q< 0.9’ lists the number of (and percentage) of residues with an average occupancy less than 0.9.

Mol	Chain	Analysed	<RSRZ>	#RSRZ>2			OWAB(Å ²)	Q<0.9
1	A	518/550 (94%)	0.34	28 (5%)	25	34	16, 26, 54, 64	0
1	B	498/550 (90%)	0.46	42 (8%)	11	17	16, 26, 67, 79	0
1	C	517/550 (94%)	0.29	21 (4%)	37	46	17, 27, 43, 53	0
1	D	504/550 (91%)	0.30	22 (4%)	34	44	17, 27, 53, 65	0
All	All	2037/2200 (92%)	0.35	113 (5%)	25	34	16, 27, 54, 79	0

All (113) RSRZ outliers are listed below:

Mol	Chain	Res	Type	RSRZ
1	B	147	ALA	7.8
1	A	404	ILE	6.7
1	C	404	ILE	6.1
1	A	403	PRO	5.5
1	A	134	LEU	5.4
1	C	401	LEU	5.4
1	C	403	PRO	5.4
1	A	217	ASP	5.2
1	B	170	VAL	5.1
1	D	148	TYR	5.0
1	B	197	VAL	5.0
1	B	203	LEU	4.9
1	B	148	TYR	4.7
1	D	147	ALA	4.6
1	D	170	VAL	4.6
1	D	404	ILE	4.5
1	A	215	ALA	4.2
1	B	156	ILE	4.2
1	B	138	ALA	4.1
1	C	213	GLY	4.0
1	B	194	VAL	4.0

Continued on next page...

Continued from previous page...

Mol	Chain	Res	Type	RSRZ
1	B	153	ASP	3.9
1	B	184	GLN	3.9
1	B	122	GLY	3.9
1	A	137	GLY	3.9
1	B	205	SER	3.8
1	A	138	ALA	3.8
1	C	402	ALA	3.8
1	B	41	THR	3.8
1	A	171	GLY	3.8
1	B	155	ASN	3.7
1	C	215	ALA	3.6
1	D	192	PHE	3.6
1	D	402	ALA	3.6
1	B	140	LEU	3.6
1	B	171	GLY	3.5
1	A	139	THR	3.5
1	D	22	MET	3.5
1	B	14	GLN	3.4
1	A	148	TYR	3.4
1	C	147	ALA	3.2
1	D	171	GLY	3.2
1	D	144	LEU	3.1
1	A	480	GLU	3.1
1	D	203	LEU	3.1
1	A	167	VAL	3.0
1	B	159	LEU	3.0
1	B	15	THR	3.0
1	B	196	GLU	2.9
1	C	18	LEU	2.9
1	B	18	LEU	2.9
1	A	470	PHE	2.9
1	B	202	SER	2.8
1	D	149	MET	2.8
1	C	100	SER	2.8
1	B	145	ASP	2.8
1	B	144	LEU	2.8
1	B	402	ALA	2.7
1	D	403	PRO	2.7
1	B	169	GLU	2.7
1	A	198	GLU	2.7
1	C	511	VAL	2.7
1	C	169	GLU	2.7

Continued on next page...

Continued from previous page...

Mol	Chain	Res	Type	RSRZ
1	A	184	GLN	2.6
1	B	181	ILE	2.6
1	C	521	PHE	2.6
1	C	15	THR	2.6
1	D	146	ASN	2.6
1	A	402	ALA	2.6
1	D	15	THR	2.5
1	A	194	VAL	2.5
1	A	22	MET	2.5
1	C	525	MET	2.5
1	C	510	ILE	2.5
1	B	477	PRO	2.4
1	C	428	ILE	2.4
1	B	152	CYS	2.4
1	A	14	GLN	2.4
1	B	195	THR	2.4
1	A	163	ASN	2.4
1	A	135	LYS	2.3
1	A	202	SER	2.3
1	B	149	MET	2.3
1	B	139	THR	2.3
1	A	186	LYS	2.3
1	B	185	VAL	2.3
1	B	183	LEU	2.3
1	D	406	SER	2.3
1	D	145	ASP	2.3
1	B	168	VAL	2.3
1	A	156	ILE	2.3
1	B	401	LEU	2.3
1	C	48	ILE	2.2
1	B	158	TRP	2.2
1	A	48	ILE	2.2
1	C	40	ILE	2.2
1	A	180	LEU	2.2
1	D	202	SER	2.2
1	A	203	LEU	2.2
1	D	19	HIS	2.1
1	D	401	LEU	2.1
1	A	216	VAL	2.1
1	D	165	CYS	2.1
1	B	157	LEU	2.1
1	B	478	VAL	2.1

Continued on next page...

Continued from previous page...

Mol	Chain	Res	Type	RSRZ
1	C	527	VAL	2.1
1	B	198	GLU	2.0
1	B	271	ILE	2.0
1	D	18	LEU	2.0
1	C	427	ALA	2.0
1	B	199	ASN	2.0
1	C	429	ILE	2.0
1	D	48	ILE	2.0

6.2 Non-standard residues in protein, DNA, RNA chains ⓘ

There are no non-standard protein/DNA/RNA residues in this entry.

6.3 Carbohydrates ⓘ

There are no monosaccharides in this entry.

6.4 Ligands ⓘ

In the following table, the Atoms column lists the number of modelled atoms in the group and the number defined in the chemical component dictionary. The B-factors column lists the minimum, median, 95th percentile and maximum values of B factors of atoms in the group. The column labelled 'Q< 0.9' lists the number of atoms with occupancy less than 0.9.

Mol	Type	Chain	Res	Atoms	RSCC	RSR	B-factors(Å ²)	Q<0.9
5	UNX	A	548	1/1	-0.76	1.98	2,2,2,2	1
5	UNX	A	547	1/1	-0.61	1.69	2,2,2,2	1
5	UNX	C	542	1/1	-0.61	1.88	2,2,2,2	1
5	UNX	B	542	1/1	-0.46	1.91	2,2,2,2	1
5	UNX	B	538	1/1	-0.42	1.36	2,2,2,2	1
5	UNX	B	534	1/1	-0.42	2.56	2,2,2,2	1
5	UNX	B	533	1/1	-0.37	1.69	2,2,2,2	1
5	UNX	A	534	1/1	-0.30	2.06	2,2,2,2	1
5	UNX	D	537	1/1	-0.30	1.76	2,2,2,2	1
5	UNX	C	543	1/1	-0.28	2.35	2,2,2,2	1
5	UNX	A	539	1/1	-0.18	3.08	2,2,2,2	1
5	UNX	A	542	1/1	-0.16	2.09	2,2,2,2	1
5	UNX	D	536	1/1	-0.08	1.75	2,2,2,2	1
5	UNX	C	533	1/1	-0.07	2.23	2,2,2,2	1

Continued on next page...

Continued from previous page...

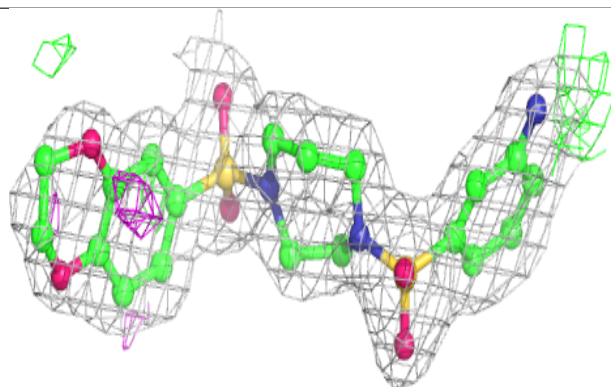
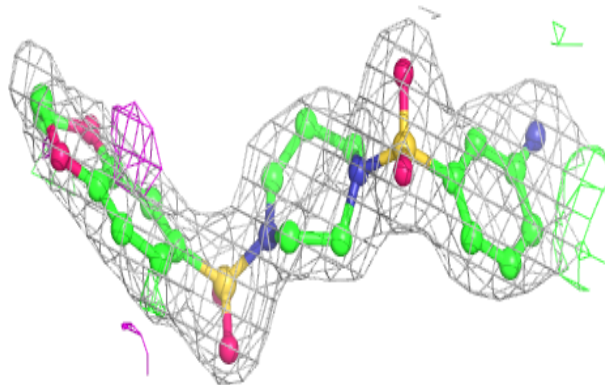
Mol	Type	Chain	Res	Atoms	RSCC	RSR	B-factors(\AA^2)	Q<0.9
5	UNX	A	536	1/1	-0.05	3.37	2,2,2,2	1
5	UNX	C	536	1/1	-0.01	3.12	2,2,2,2	1
5	UNX	A	538	1/1	-0.00	2.30	2,2,2,2	1
5	UNX	B	543	1/1	0.04	2.62	2,2,2,2	1
5	UNX	C	535	1/1	0.11	2.79	2,2,2,2	1
5	UNX	A	546	1/1	0.12	3.16	2,2,2,2	1
5	UNX	A	544	1/1	0.14	2.75	2,2,2,2	1
5	UNX	C	540	1/1	0.16	2.93	2,2,2,2	1
5	UNX	C	539	1/1	0.17	1.46	2,2,2,2	1
5	UNX	D	533	1/1	0.17	2.24	2,2,2,2	1
5	UNX	B	540	1/1	0.18	2.54	2,2,2,2	1
5	UNX	A	535	1/1	0.24	3.43	2,2,2,2	1
5	UNX	D	538	1/1	0.28	1.94	2,2,2,2	1
5	UNX	A	537	1/1	0.31	4.17	2,2,2,2	1
5	UNX	D	534	1/1	0.32	2.04	2,2,2,2	1
5	UNX	B	539	1/1	0.34	2.19	2,2,2,2	1
5	UNX	D	539	1/1	0.35	1.93	2,2,2,2	1
5	UNX	A	543	1/1	0.36	2.25	2,2,2,2	1
5	UNX	C	537	1/1	0.39	1.86	2,2,2,2	1
5	UNX	C	534	1/1	0.40	2.01	2,2,2,2	1
5	UNX	C	538	1/1	0.48	3.36	2,2,2,2	1
5	UNX	A	533	1/1	0.55	2.12	2,2,2,2	1
5	UNX	B	535	1/1	0.56	2.49	2,2,2,2	1
5	UNX	D	535	1/1	0.57	1.76	2,2,2,2	1
5	UNX	B	537	1/1	0.58	2.32	2,2,2,2	1
5	UNX	A	545	1/1	0.60	2.18	2,2,2,2	1
5	UNX	C	544	1/1	0.63	1.95	2,2,2,2	1
5	UNX	B	536	1/1	0.74	1.70	2,2,2,2	1
4	SO4	A	532	5/5	0.89	0.25	53,53,56,56	0
2	3SZ	A	540	30/30	0.91	0.14	25,32,35,37	0
2	3SZ	D	540	30/30	0.94	0.12	27,32,35,36	0
4	SO4	C	532	5/5	0.94	0.29	60,61,62,62	0
4	SO4	D	532	5/5	0.95	0.13	51,51,53,53	0
4	SO4	B	532	5/5	0.96	0.08	44,45,47,48	0
3	FBP	B	541	20/20	0.96	0.10	19,21,27,29	0
3	FBP	C	541	20/20	0.97	0.13	24,28,34,34	0
3	FBP	A	541	20/20	0.98	0.07	22,26,29,29	0
3	FBP	D	541	20/20	0.98	0.06	17,19,22,23	0

The following is a graphical depiction of the model fit to experimental electron density of all instances of the Ligand of Interest. In addition, ligands with molecular weight > 250 and outliers as shown on the geometry validation Tables will also be included. Each fit is shown from different

orientation to approximate a three-dimensional view.

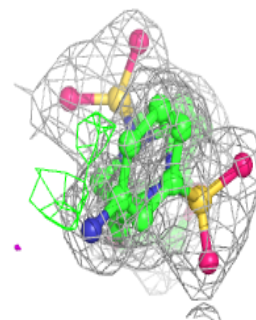
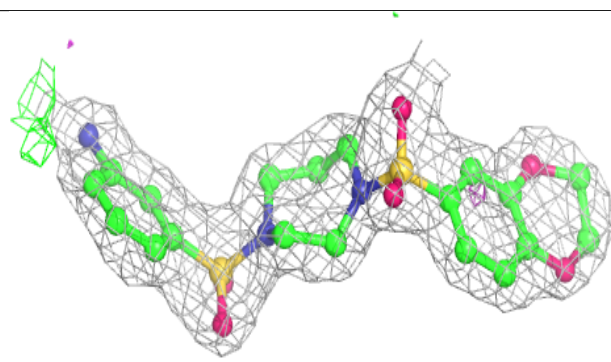
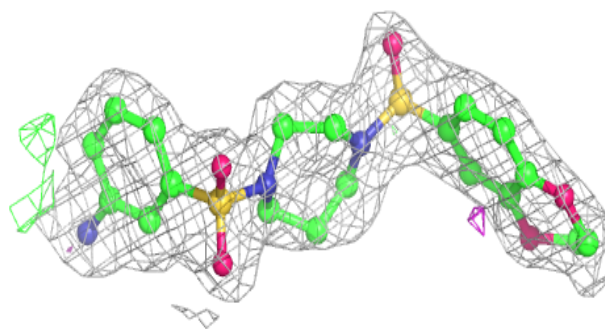
Electron density around 3SZ A 540:

$2mF_o-DF_c$ (at 0.7 rmsd) in gray
 mF_o-DF_c (at 3 rmsd) in purple (negative)
and green (positive)



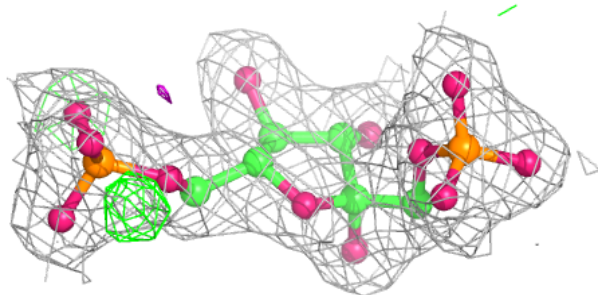
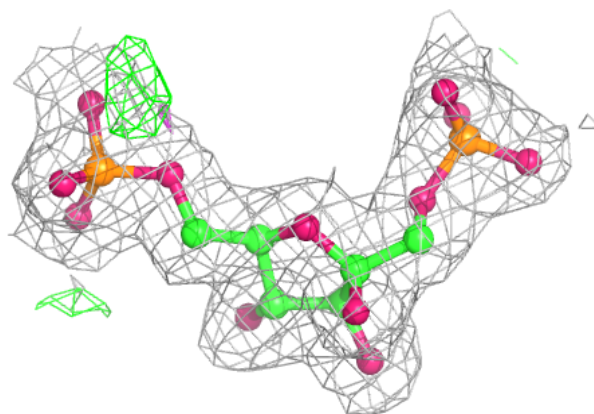
Electron density around 3SZ D 540:

$2mF_o-DF_c$ (at 0.7 rmsd) in gray
 mF_o-DF_c (at 3 rmsd) in purple (negative)
and green (positive)

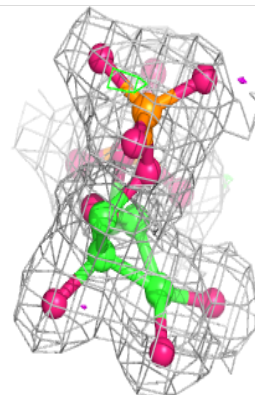
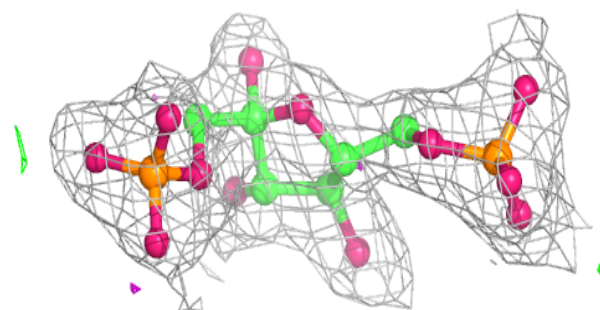
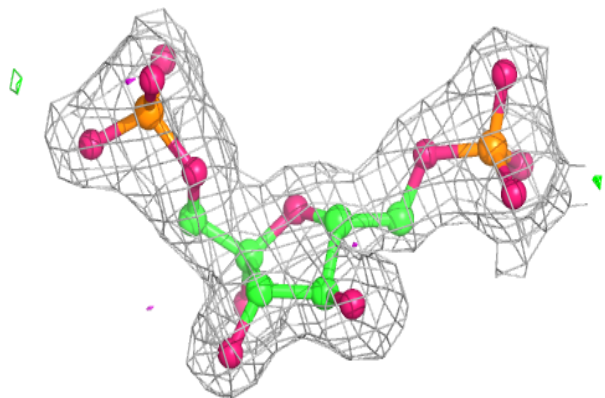


Electron density around FBP B 541:

$2mF_o-DF_c$ (at 0.7 rmsd) in gray
 mF_o-DF_c (at 3 rmsd) in purple (negative)
and green (positive)

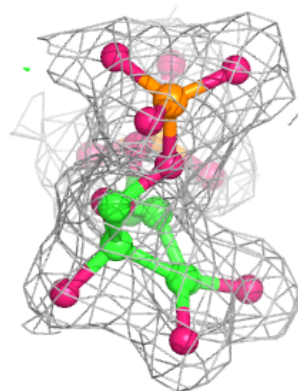
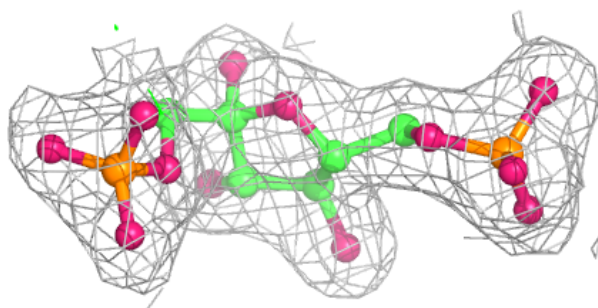
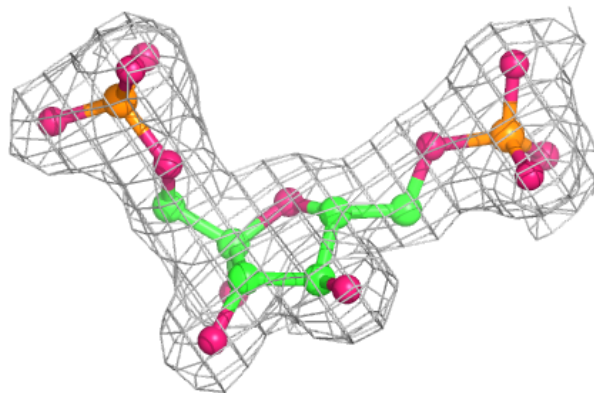
**Electron density around FBP C 541:**

$2mF_o-DF_c$ (at 0.7 rmsd) in gray
 mF_o-DF_c (at 3 rmsd) in purple (negative)
and green (positive)



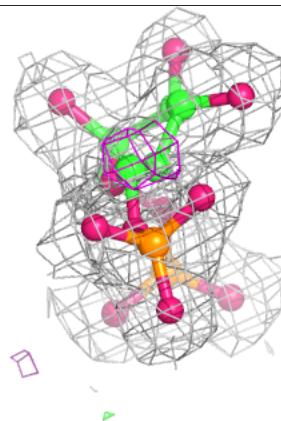
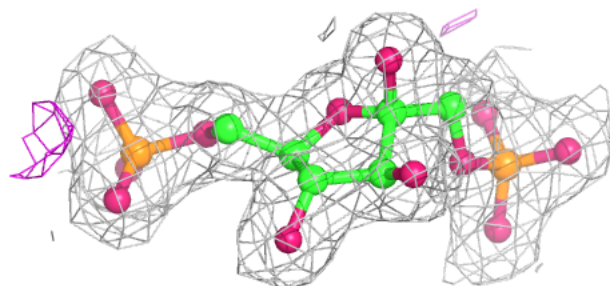
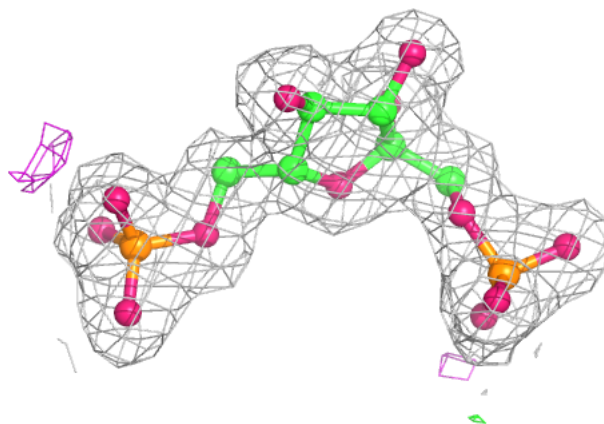
Electron density around FBP A 541:

$2mF_o-DF_c$ (at 0.7 rmsd) in gray
 mF_o-DF_c (at 3 rmsd) in purple (negative)
and green (positive)



Electron density around FBP D 541:

$2mF_o-DF_c$ (at 0.7 rmsd) in gray
 mF_o-DF_c (at 3 rmsd) in purple (negative)
and green (positive)



6.5 Other polymers [i](#)

There are no such residues in this entry.