



wwPDB X-ray Structure Validation Summary Report ⓘ

Aug 8, 2020 – 06:19 AM BST

PDB ID : 4MFP
Title : The crystal structure of acyltransferase in complex with decanoyl-CoA and Tei pseudoaglycone
Authors : Lyu, S.Y.; Liu, Y.C.; Chang, C.Y.; Huang, C.J.; Li, T.L.
Deposited on : 2013-08-28
Resolution : 2.15 Å(reported)

This is a wwPDB X-ray Structure Validation Summary Report for a publicly released PDB entry.

We welcome your comments at validation@mail.wwpdb.org

A user guide is available at

<https://www.wwpdb.org/validation/2017/XrayValidationReportHelp>

with specific help available everywhere you see the ⓘ symbol.

The following versions of software and data (see [references ⓘ](#)) were used in the production of this report:

MolProbity : 4.02b-467
Mogul : 1.8.5 (274361), CSD as541be (2020)
Xtriage (Phenix) : 1.13
EDS : 2.13.1
buster-report : 1.1.7 (2018)
Percentile statistics : 20191225.v01 (using entries in the PDB archive December 25th 2019)
Refmac : 5.8.0158
CCP4 : 7.0.044 (Gargrove)
Ideal geometry (proteins) : Engh & Huber (2001)
Ideal geometry (DNA, RNA) : Parkinson et al. (1996)
Validation Pipeline (wwPDB-VP) : 2.13.1

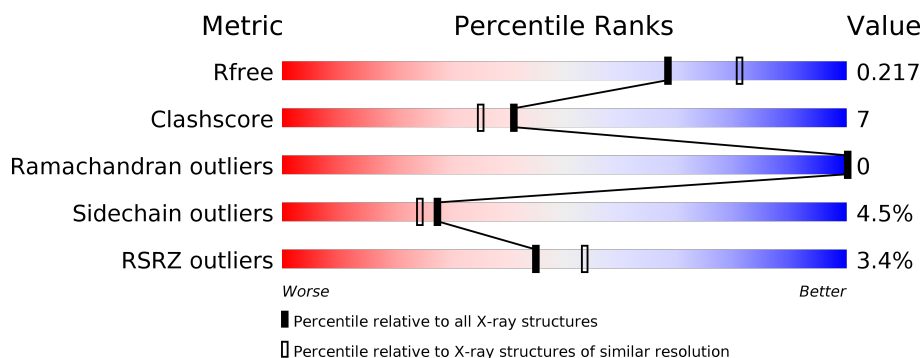
1 Overall quality at a glance

The following experimental techniques were used to determine the structure:

X-RAY DIFFRACTION

The reported resolution of this entry is 2.15 Å.

Percentile scores (ranging between 0-100) for global validation metrics of the entry are shown in the following graphic. The table shows the number of entries on which the scores are based.



Metric	Whole archive (#Entries)	Similar resolution (#Entries, resolution range(Å))
R_{free}	130704	1479 (2.16-2.16)
Clashscore	141614	1585 (2.16-2.16)
Ramachandran outliers	138981	1560 (2.16-2.16)
Sidechain outliers	138945	1559 (2.16-2.16)
RSRZ outliers	127900	1456 (2.16-2.16)

The table below summarises the geometric issues observed across the polymeric chains and their fit to the electron density. The red, orange, yellow and green segments on the lower bar indicate the fraction of residues that contain outliers for ≥ 3 , 2, 1 and 0 types of geometric quality criteria respectively. A grey segment represents the fraction of residues that are not modelled. The numeric value for each fraction is indicated below the corresponding segment, with a dot representing fractions $\leq 5\%$. The upper red bar (where present) indicates the fraction of residues that have poor fit to the electron density. The numeric value is given above the bar.

Mol	Chain	Length	Quality of chain
1	A	345	
2	B	7	

The following table lists non-polymeric compounds, carbohydrate monomers and non-standard residues in protein, DNA, RNA chains that are outliers for geometric or electron-density-fit criteria:

Mol	Type	Chain	Res	Chirality	Geometry	Clashes	Electron density
6	MAN	B	502	-	-	-	X

2 Entry composition

There are 9 unique types of molecules in this entry. The entry contains 3143 atoms, of which 0 are hydrogens and 0 are deuteriums.

In the tables below, the ZeroOcc column contains the number of atoms modelled with zero occupancy, the AltConf column contains the number of residues with at least one atom in alternate conformation and the Trace column contains the number of residues modelled with at most 2 atoms.

- Molecule 1 is a protein called Putative uncharacterized protein tcp24.

Mol	Chain	Residues	Atoms					ZeroOcc	AltConf	Trace
1	A	323	Total	C	N	O	S	0	11	0
			2699	1720	492	479	8			

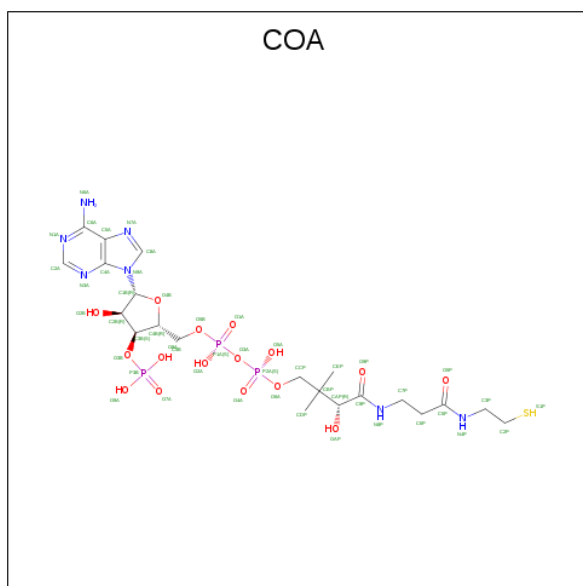
There are 23 discrepancies between the modelled and reference sequences:

Chain	Residue	Modelled	Actual	Comment	Reference
A	-21	MET	-	expression tag	UNP Q70AY4
A	-20	GLY	-	expression tag	UNP Q70AY4
A	-19	SER	-	expression tag	UNP Q70AY4
A	-18	SER	-	expression tag	UNP Q70AY4
A	-17	HIS	-	expression tag	UNP Q70AY4
A	-16	HIS	-	expression tag	UNP Q70AY4
A	-15	HIS	-	expression tag	UNP Q70AY4
A	-14	HIS	-	expression tag	UNP Q70AY4
A	-13	HIS	-	expression tag	UNP Q70AY4
A	-12	HIS	-	expression tag	UNP Q70AY4
A	-11	SER	-	expression tag	UNP Q70AY4
A	-10	SER	-	expression tag	UNP Q70AY4
A	-9	GLY	-	expression tag	UNP Q70AY4
A	-8	LEU	-	expression tag	UNP Q70AY4
A	-7	VAL	-	expression tag	UNP Q70AY4
A	-6	PRO	-	expression tag	UNP Q70AY4
A	-5	ARG	-	expression tag	UNP Q70AY4
A	-4	GLY	-	expression tag	UNP Q70AY4
A	-3	SER	-	expression tag	UNP Q70AY4
A	-2	HIS	-	expression tag	UNP Q70AY4
A	-1	MET	-	expression tag	UNP Q70AY4
A	0	MET	-	expression tag	UNP Q70AY4
A	196	ALA	HIS	engineered mutation	UNP Q70AY4

- Molecule 2 is a protein called Teicoplanin pseudoaglycone.

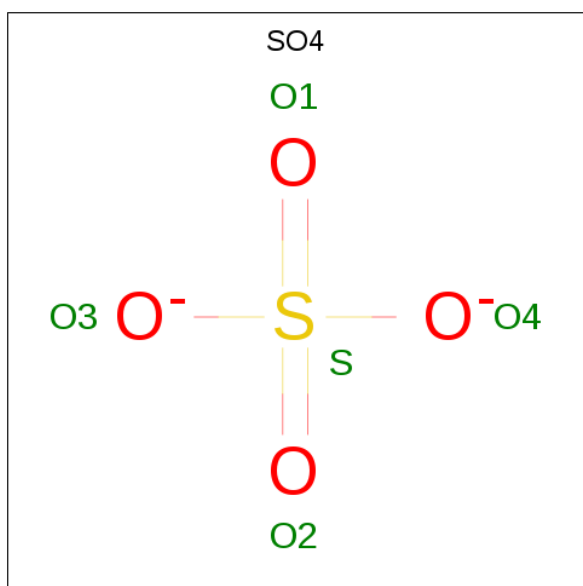
Mol	Chain	Residues	Atoms					ZeroOcc	AltConf	Trace
2	B	7	Total	C	Cl	N	O	0	0	0
			85	58	2	7	18			

- Molecule 3 is COENZYME A (three-letter code: COA) (formula: $C_{21}H_{36}N_7O_{16}P_3S$).



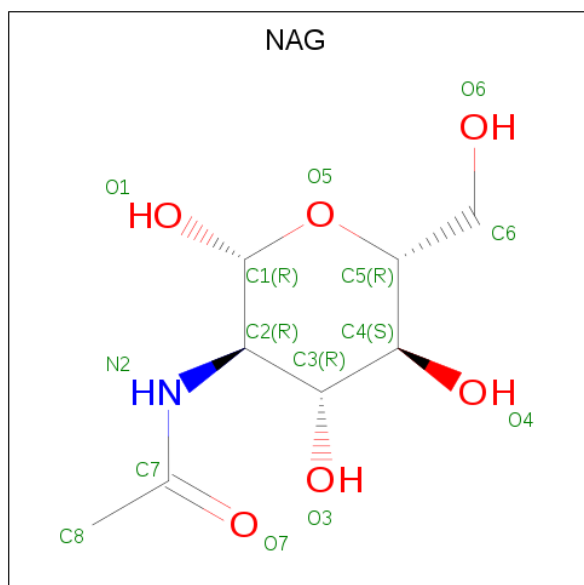
Mol	Chain	Residues	Atoms						ZeroOcc	AltConf
3	A	1	Total	C	N	O	P	S	0	0
			48	21	7	16	3	1		

- Molecule 4 is SULFATE ION (three-letter code: SO4) (formula: O_4S).



Mol	Chain	Residues	Atoms			ZeroOcc	AltConf
4	A	1	Total	O	S	0	0
			5	4	1		
4	A	1	Total	O	S	0	0
			5	4	1		

- Molecule 5 is 2-acetamido-2-deoxy-beta-D-glucopyranose (three-letter code: NAG) (formula: $C_8H_{15}NO_6$).



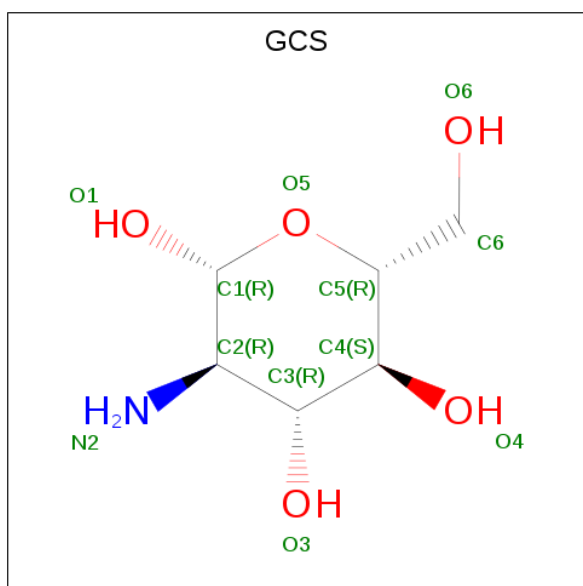
Mol	Chain	Residues	Atoms				ZeroOcc	AltConf
5	B	1	Total	C	N	O	0	0
			14	8	1	5		

- Molecule 6 is alpha-D-mannopyranose (three-letter code: MAN) (formula: $C_6H_{12}O_6$).



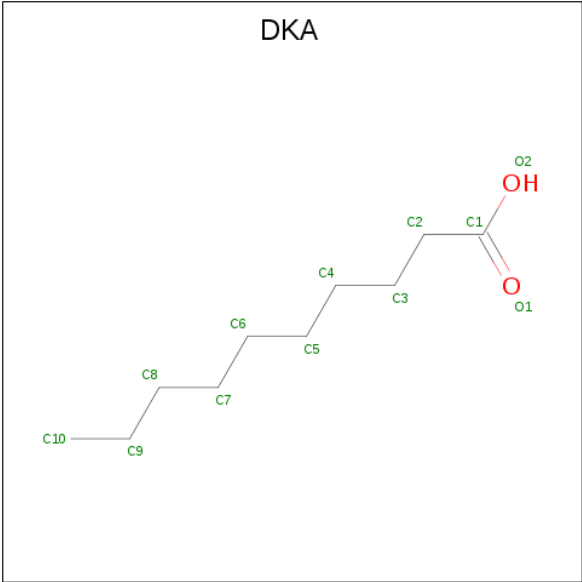
Mol	Chain	Residues	Atoms			ZeroOcc	AltConf
6	B	1	Total	C	O	0	0
			11	6	5		

- Molecule 7 is 2-amino-2-deoxy-beta-D-glucopyranose (three-letter code: GCS) (formula: $C_6H_{13}NO_5$).



Mol	Chain	Residues	Atoms				ZeroOcc	AltConf
7	B	1	Total	C	N	O	0	0
			11	6	1	4		

- Molecule 8 is DECANOIC ACID (three-letter code: DKA) (formula: $C_{10}H_{20}O_2$).



Mol	Chain	Residues	Atoms			ZeroOcc	AltConf
8	B	1	Total	C	O	0	0
			11	10	1		

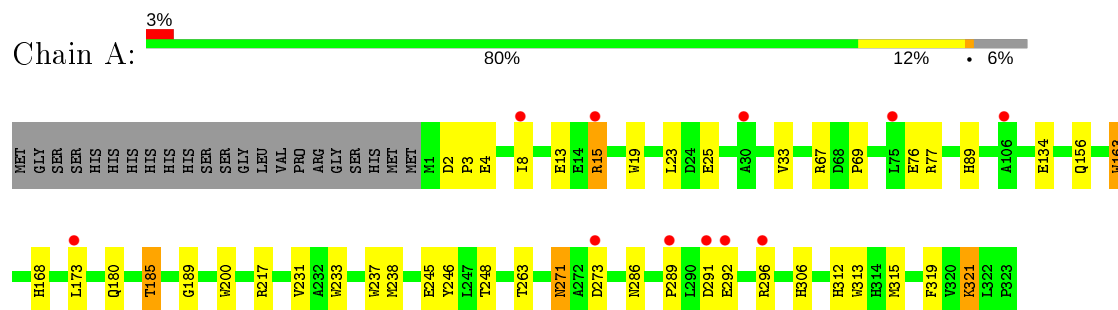
- Molecule 9 is water.

Mol	Chain	Residues	Atoms		ZeroOcc	AltConf
9	A	245	Total	O	0	0
			245	245		
9	B	9	Total	O	0	0
			9	9		

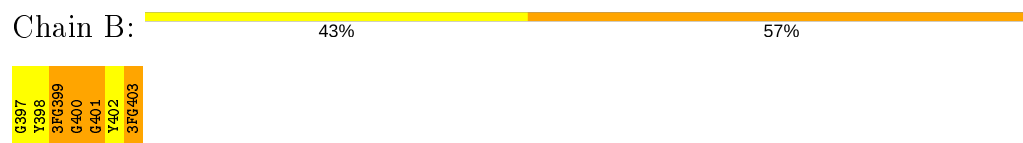
3 Residue-property plots [i](#)

These plots are drawn for all protein, RNA, DNA and oligosaccharide chains in the entry. The first graphic for a chain summarises the proportions of the various outlier classes displayed in the second graphic. The second graphic shows the sequence view annotated by issues in geometry and electron density. Residues are color-coded according to the number of geometric quality criteria for which they contain at least one outlier: green = 0, yellow = 1, orange = 2 and red = 3 or more. A red dot above a residue indicates a poor fit to the electron density ($RSRZ > 2$). Stretches of 2 or more consecutive residues without any outlier are shown as a green connector. Residues present in the sample, but not in the model, are shown in grey.

- Molecule 1: Putative uncharacterized protein tcp24



- Molecule 2: Teicoplanin pseudoaglycone



4 Data and refinement statistics

Property	Value	Source
Space group	P 65	Depositor
Cell constants a, b, c, α , β , γ	134.11Å 134.11Å 49.45Å 90.00° 90.00° 120.00°	Depositor
Resolution (Å)	30.00 – 2.15 26.99 – 2.15	Depositor EDS
% Data completeness (in resolution range)	99.9 (30.00-2.15) 99.9 (26.99-2.15)	Depositor EDS
R_{merge}	(Not available)	Depositor
R_{sym}	(Not available)	Depositor
$\langle I/\sigma(I) \rangle$ ¹	4.80 (at 2.15Å)	Xtriage
Refinement program	REFMAC 5.6.0117	Depositor
R, R_{free}	0.177 , 0.217 0.177 , 0.217	Depositor DCC
R_{free} test set	1395 reflections (5.02%)	wwPDB-VP
Wilson B-factor (Å ²)	33.5	Xtriage
Anisotropy	0.063	Xtriage
Bulk solvent k_{sol} (e/Å ³), B_{sol} (Å ²)	0.35 , 51.3	EDS
L-test for twinning ²	$\langle L \rangle = 0.49$, $\langle L^2 \rangle = 0.32$	Xtriage
Estimated twinning fraction	0.034 for h,-h-k,-l	Xtriage
F_o, F_c correlation	0.96	EDS
Total number of atoms	3143	wwPDB-VP
Average B, all atoms (Å ²)	40.0	wwPDB-VP

Xtriage's analysis on translational NCS is as follows: *The largest off-origin peak in the Patterson function is 4.06% of the height of the origin peak. No significant pseudotranslation is detected.*

¹Intensities estimated from amplitudes.

²Theoretical values of $\langle |L| \rangle$, $\langle L^2 \rangle$ for acentric reflections are 0.5, 0.333 respectively for untwinned datasets, and 0.375, 0.2 for perfectly twinned datasets.

5 Model quality [i](#)

5.1 Standard geometry [i](#)

Bond lengths and bond angles in the following residue types are not validated in this section: GHP, NAG, 3MY, COA, GCS, SO4, DKA, 3FG, OMY, MAN

The Z score for a bond length (or angle) is the number of standard deviations the observed value is removed from the expected value. A bond length (or angle) with $|Z| > 5$ is considered an outlier worth inspection. RMSZ is the root-mean-square of all Z scores of the bond lengths (or angles).

Mol	Chain	Bond lengths		Bond angles	
		RMSZ	$\# Z > 5$	RMSZ	$\# Z > 5$
1	A	0.78	5/2787 (0.2%)	0.75	0/3794

Chiral center outliers are detected by calculating the chiral volume of a chiral center and verifying if the center is modelled as a planar moiety or with the opposite hand. A planarity outlier is detected by checking planarity of atoms in a peptide group, atoms in a mainchain group or atoms of a sidechain that are expected to be planar.

Mol	Chain	#Chirality outliers	#Planarity outliers
2	B	0	1

All (5) bond length outliers are listed below:

Mol	Chain	Res	Type	Atoms	Z	Observed(Å)	Ideal(Å)
1	A	200	TRP	CD2-CE2	5.70	1.48	1.41
1	A	19	TRP	CD2-CE2	5.62	1.48	1.41
1	A	237	TRP	CD2-CE2	5.37	1.47	1.41
1	A	313	TRP	CD2-CE2	5.29	1.47	1.41
1	A	163	TRP	CD2-CE2	5.21	1.47	1.41

There are no bond angle outliers.

There are no chirality outliers.

All (1) planarity outliers are listed below:

Mol	Chain	Res	Type	Group
2	B	399	3FG	Mainchain

5.2 Too-close contacts ⓘ

In the following table, the Non-H and H(model) columns list the number of non-hydrogen atoms and hydrogen atoms in the chain respectively. The H(added) column lists the number of hydrogen atoms added and optimized by MolProbity. The Clashes column lists the number of clashes within the asymmetric unit, whereas Symm-Clashes lists symmetry related clashes.

Mol	Chain	Non-H	H(model)	H(added)	Clashes	Symm-Clashes
1	A	2699	0	2613	32	0
2	B	85	0	32	4	0
3	A	48	0	32	3	0
4	A	10	0	0	0	0
5	B	14	0	13	2	0
6	B	11	0	10	1	0
7	B	11	0	11	1	0
8	B	11	0	19	4	0
9	A	245	0	0	6	0
9	B	9	0	0	0	0
All	All	3143	0	2730	38	0

The all-atom clashscore is defined as the number of clashes found per 1000 atoms (including hydrogen atoms). The all-atom clashscore for this structure is 7.

The worst 5 of 38 close contacts within the same asymmetric unit are listed below, sorted by their clash magnitude.

Atom-1	Atom-2	Interatomic distance (Å)	Clash overlap (Å)
7:B:503:GCS:HN22	8:B:504:DKA:C1	1.26	1.48
3:A:401:COA:S1P	8:B:504:DKA:C1	2.31	1.18
1:A:286:ASN:HB3	9:A:615:HOH:O	1.77	0.82
1:A:15:ARG:HH11	1:A:15:ARG:HG2	1.45	0.81
1:A:163:TRP:HD1	9:A:517:HOH:O	1.72	0.72

There are no symmetry-related clashes.

5.3 Torsion angles ⓘ

5.3.1 Protein backbone ⓘ

In the following table, the Percentiles column shows the percent Ramachandran outliers of the chain as a percentile score with respect to all X-ray entries followed by that with respect to entries of similar resolution.

The Analysed column shows the number of residues for which the backbone conformation was

analysed, and the total number of residues.

Mol	Chain	Analysed	Favoured	Allowed	Outliers	Percentiles	
1	A	332/345 (96%)	324 (98%)	8 (2%)	0	100	100

There are no Ramachandran outliers to report.

5.3.2 Protein sidechains ⓘ

In the following table, the Percentiles column shows the percent sidechain outliers of the chain as a percentile score with respect to all X-ray entries followed by that with respect to entries of similar resolution.

The Analysed column shows the number of residues for which the sidechain conformation was analysed, and the total number of residues.

Mol	Chain	Analysed	Rotameric	Outliers	Percentiles	
1	A	275/283 (97%)	262 (95%)	13 (5%)	26	23

5 of 13 residues with a non-rotameric sidechain are listed below:

Mol	Chain	Res	Type
1	A	185[A]	THR
1	A	185[B]	THR
1	A	291	ASP
1	A	168	HIS
1	A	273	ASP

Some sidechains can be flipped to improve hydrogen bonding and reduce clashes. All (4) such sidechains are listed below:

Mol	Chain	Res	Type
1	A	89	HIS
1	A	242	GLN
1	A	271	ASN
1	A	306	HIS

5.3.3 RNA ⓘ

There are no RNA molecules in this entry.

5.4 Non-standard residues in protein, DNA, RNA chains ⓘ

7 non-standard protein/DNA/RNA residues are modelled in this entry.

In the following table, the Counts columns list the number of bonds (or angles) for which Mogul statistics could be retrieved, the number of bonds (or angles) that are observed in the model and the number of bonds (or angles) that are defined in the Chemical Component Dictionary. The Link column lists molecule types, if any, to which the group is linked. The Z score for a bond length (or angle) is the number of standard deviations the observed value is removed from the expected value. A bond length (or angle) with $|Z| > 2$ is considered an outlier worth inspection. RMSZ is the root-mean-square of all Z scores of the bond lengths (or angles).

Mol	Type	Chain	Res	Link	Bond lengths			Bond angles		
					Counts	RMSZ	# $ Z > 2$	Counts	RMSZ	# $ Z > 2$
2	GHP	B	401	2	10,11,12	1.77	1 (10%)	11,14,16	1.28	0
2	3FG	B	403	2,6	9,13,13	1.36	2 (22%)	13,18,18	1.34	2 (15%)
2	3MY	B	398	2	12,13,14	2.36	2 (16%)	14,17,19	1.06	1 (7%)
2	GHP	B	400	2,7	10,11,12	0.75	0	11,14,16	2.36	4 (36%)
2	3FG	B	399	2	11,12,13	1.07	1 (9%)	13,16,18	0.96	0
2	OMY	B	402	2,5	12,14,15	2.59	3 (25%)	17,19,21	1.72	3 (17%)
2	GHP	B	397	2	10,11,12	1.42	1 (10%)	11,14,16	0.99	0

In the following table, the Chirals column lists the number of chiral outliers, the number of chiral centers analysed, the number of these observed in the model and the number defined in the Chemical Component Dictionary. Similar counts are reported in the Torsion and Rings columns. '-' means no outliers of that kind were identified.

Mol	Type	Chain	Res	Link	Chirals	Torsions	Rings
2	GHP	B	401	2	-	0/4/6/8	0/1/1/1
2	3FG	B	403	2,6	-	2/4/8/8	0/1/1/1
2	3MY	B	398	2	-	0/5/6/8	0/1/1/1
2	GHP	B	400	2,7	-	2/4/6/8	0/1/1/1
2	3FG	B	399	2	-	0/4/6/8	0/1/1/1
2	OMY	B	402	2,5	-	2/9/10/12	0/1/1/1
2	GHP	B	397	2	-	0/4/6/8	0/1/1/1

The worst 5 of 10 bond length outliers are listed below:

Mol	Chain	Res	Type	Atoms	Z	Observed(Å)	Ideal(Å)
2	B	402	OMY	CZ-CE1	8.28	1.47	1.39
2	B	398	3MY	CZ-CE2	7.42	1.46	1.39
2	B	401	GHP	C1-CA	-5.13	1.47	1.52
2	B	397	GHP	C1-CA	-3.74	1.48	1.52

Continued on next page...

Continued from previous page...

Mol	Chain	Res	Type	Atoms	Z	Observed(Å)	Ideal(Å)
2	B	399	3FG	CB-CA	-3.02	1.49	1.52

The worst 5 of 10 bond angle outliers are listed below:

Mol	Chain	Res	Type	Atoms	Z	Observed(°)	Ideal(°)
2	B	400	GHP	C5-C6-C1	5.45	126.68	121.20
2	B	402	OMY	ODE-CB-CA	5.14	118.12	107.28
2	B	400	GHP	C6-C1-C2	-3.54	113.87	118.29
2	B	403	3FG	CD1-CG1-CB	-3.13	117.43	120.11
2	B	400	GHP	C6-C5-C4	-2.32	117.33	119.88

There are no chirality outliers.

5 of 6 torsion outliers are listed below:

Mol	Chain	Res	Type	Atoms
2	B	402	OMY	O-C-CA-CB
2	B	400	GHP	C6-C1-CA-C
2	B	403	3FG	C-CA-CB-CG2
2	B	402	OMY	N-CA-CB-CG
2	B	400	GHP	C2-C1-CA-C

There are no ring outliers.

3 monomers are involved in 4 short contacts:

Mol	Chain	Res	Type	Clashes	Symm-Clashes
2	B	401	GHP	1	0
2	B	403	3FG	2	0
2	B	400	GHP	2	0

5.5 Carbohydrates

There are no monosaccharides in this entry.

5.6 Ligand geometry

7 ligands are modelled in this entry.

In the following table, the Counts columns list the number of bonds (or angles) for which Mogul statistics could be retrieved, the number of bonds (or angles) that are observed in the model and the number of bonds (or angles) that are defined in the Chemical Component Dictionary. The

Link column lists molecule types, if any, to which the group is linked. The Z score for a bond length (or angle) is the number of standard deviations the observed value is removed from the expected value. A bond length (or angle) with $|Z| > 2$ is considered an outlier worth inspection. RMSZ is the root-mean-square of all Z scores of the bond lengths (or angles).

Mol	Type	Chain	Res	Link	Bond lengths			Bond angles		
					Counts	RMSZ	# Z > 2	Counts	RMSZ	# Z > 2
6	MAN	B	502	2	11,11,12	0.50	0	15,15,17	0.99	1 (6%)
5	NAG	B	501	2	14,14,15	0.59	0	17,19,21	1.93	4 (23%)
3	COA	A	401	-	41,50,50	1.67	10 (24%)	52,75,75	1.11	4 (7%)
4	SO4	A	403	-	4,4,4	0.48	0	6,6,6	0.28	0
8	DKA	B	504	7	10,10,11	0.26	0	9,9,11	0.74	0
4	SO4	A	402	-	4,4,4	0.43	0	6,6,6	0.12	0
7	GCS	B	503	8,2	11,11,12	1.07	1 (9%)	12,15,17	1.30	1 (8%)

In the following table, the Chirals column lists the number of chiral outliers, the number of chiral centers analysed, the number of these observed in the model and the number defined in the Chemical Component Dictionary. Similar counts are reported in the Torsion and Rings columns. '-' means no outliers of that kind were identified.

Mol	Type	Chain	Res	Link	Chirals	Torsions	Rings
7	GCS	B	503	8,2	-	2/2/19/22	0/1/1/1
6	MAN	B	502	2	-	1/2/19/22	0/1/1/1
5	NAG	B	501	2	-	2/6/23/26	0/1/1/1
8	DKA	B	504	7	-	3/7/8/9	-
3	COA	A	401	-	-	2/44/64/64	0/3/3/3

The worst 5 of 11 bond length outliers are listed below:

Mol	Chain	Res	Type	Atoms	Z	Observed(Å)	Ideal(Å)
3	A	401	COA	P2A-O5A	-3.26	1.40	1.55
3	A	401	COA	P2A-O4A	-3.01	1.40	1.50
3	A	401	COA	P1A-O2A	-2.86	1.41	1.55
3	A	401	COA	P3B-O8A	-2.84	1.43	1.54
3	A	401	COA	C2B-C1B	-2.75	1.49	1.53

The worst 5 of 10 bond angle outliers are listed below:

Mol	Chain	Res	Type	Atoms	Z	Observed(°)	Ideal(°)
5	B	501	NAG	O5-C1-C2	-4.75	103.79	111.29
5	B	501	NAG	O5-C5-C6	4.28	113.91	107.20
3	A	401	COA	C4A-C5A-N7A	-3.41	105.84	109.40

Continued on next page...

Continued from previous page...

Mol	Chain	Res	Type	Atoms	Z	Observed(°)	Ideal(°)
7	B	503	GCS	C1-O5-C5	3.31	116.68	112.19
3	A	401	COA	N3A-C2A-N1A	-2.91	124.12	128.68

There are no chirality outliers.

5 of 10 torsion outliers are listed below:

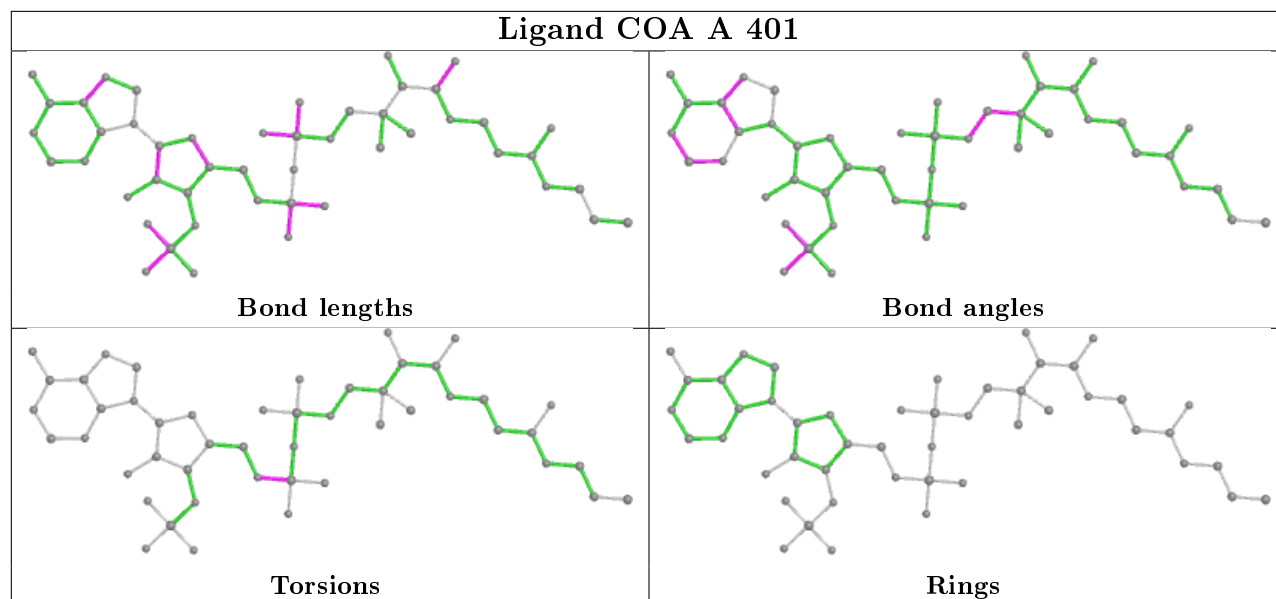
Mol	Chain	Res	Type	Atoms
3	A	401	COA	C5B-O5B-P1A-O1A
3	A	401	COA	C5B-O5B-P1A-O3A
7	B	503	GCS	C4-C5-C6-O6
5	B	501	NAG	O5-C5-C6-O6
5	B	501	NAG	C4-C5-C6-O6

There are no ring outliers.

5 monomers are involved in 8 short contacts:

Mol	Chain	Res	Type	Clashes	Symm-Clashes
6	B	502	MAN	1	0
5	B	501	NAG	2	0
3	A	401	COA	3	0
8	B	504	DKA	4	0
7	B	503	GCS	1	0

The following is a two-dimensional graphical depiction of Mogul quality analysis of bond lengths, bond angles, torsion angles, and ring geometry for all instances of the Ligand of Interest. In addition, ligands with molecular weight > 250 and outliers as shown on the validation Tables will also be included. For torsion angles, if less than 5% of the Mogul distribution of torsion angles is within 10 degrees of the torsion angle in question, then that torsion angle is considered an outlier. Any bond that is central to one or more torsion angles identified as an outlier by Mogul will be highlighted in the graph. For rings, the root-mean-square deviation (RMSD) between the ring in question and similar rings identified by Mogul is calculated over all ring torsion angles. If the average RMSD is greater than 60 degrees and the minimal RMSD between the ring in question and any Mogul-identified rings is also greater than 60 degrees, then that ring is considered an outlier. The outliers are highlighted in purple. The color gray indicates Mogul did not find sufficient equivalents in the CSD to analyse the geometry.



5.7 Other polymers [i](#)

There are no such residues in this entry.

5.8 Polymer linkage issues [i](#)

There are no chain breaks in this entry.

6 Fit of model and data [i](#)

6.1 Protein, DNA and RNA chains [i](#)

In the following table, the column labelled ‘#RSRZ> 2’ contains the number (and percentage) of RSRZ outliers, followed by percent RSRZ outliers for the chain as percentile scores relative to all X-ray entries and entries of similar resolution. The OWAB column contains the minimum, median, 95th percentile and maximum values of the occupancy-weighted average B-factor per residue. The column labelled ‘Q< 0.9’ lists the number of (and percentage) of residues with an average occupancy less than 0.9.

Mol	Chain	Analysed	<RSRZ>	#RSRZ>2	OWAB(Å ²)	Q<0.9
1	A	323/345 (93%)	-0.03	11 (3%) 45 53	20, 34, 67, 95	0
2	B	0/7	-	-	-	-
All	All	323/352 (91%)	-0.03	11 (3%) 45 53	20, 34, 67, 95	0

The worst 5 of 11 RSRZ outliers are listed below:

Mol	Chain	Res	Type	RSRZ
1	A	289	PRO	3.6
1	A	292	GLU	3.3
1	A	296	ARG	3.1
1	A	291	ASP	3.1
1	A	273	ASP	2.9

6.2 Non-standard residues in protein, DNA, RNA chains [i](#)

In the following table, the Atoms column lists the number of modelled atoms in the group and the number defined in the chemical component dictionary. The B-factors column lists the minimum, median, 95th percentile and maximum values of B factors of atoms in the group. The column labelled ‘Q< 0.9’ lists the number of atoms with occupancy less than 0.9.

Mol	Type	Chain	Res	Atoms	RSCC	RSR	B-factors(Å ²)	Q<0.9
2	3FG	B	399	12/13	0.63	0.39	86,100,108,115	0
2	OMY	B	402	14/15	0.75	0.26	64,75,81,94	0
2	3MY	B	398	13/14	0.78	0.26	84,91,98,102	0
2	3FG	B	403	13/13	0.80	0.42	82,101,108,109	0
2	GHP	B	401	11/12	0.80	0.30	75,81,85,86	0
2	GHP	B	397	11/12	0.83	0.42	104,119,126,129	0
2	GHP	B	400	11/12	0.85	0.19	66,72,77,87	0

6.3 Carbohydrates [i](#)

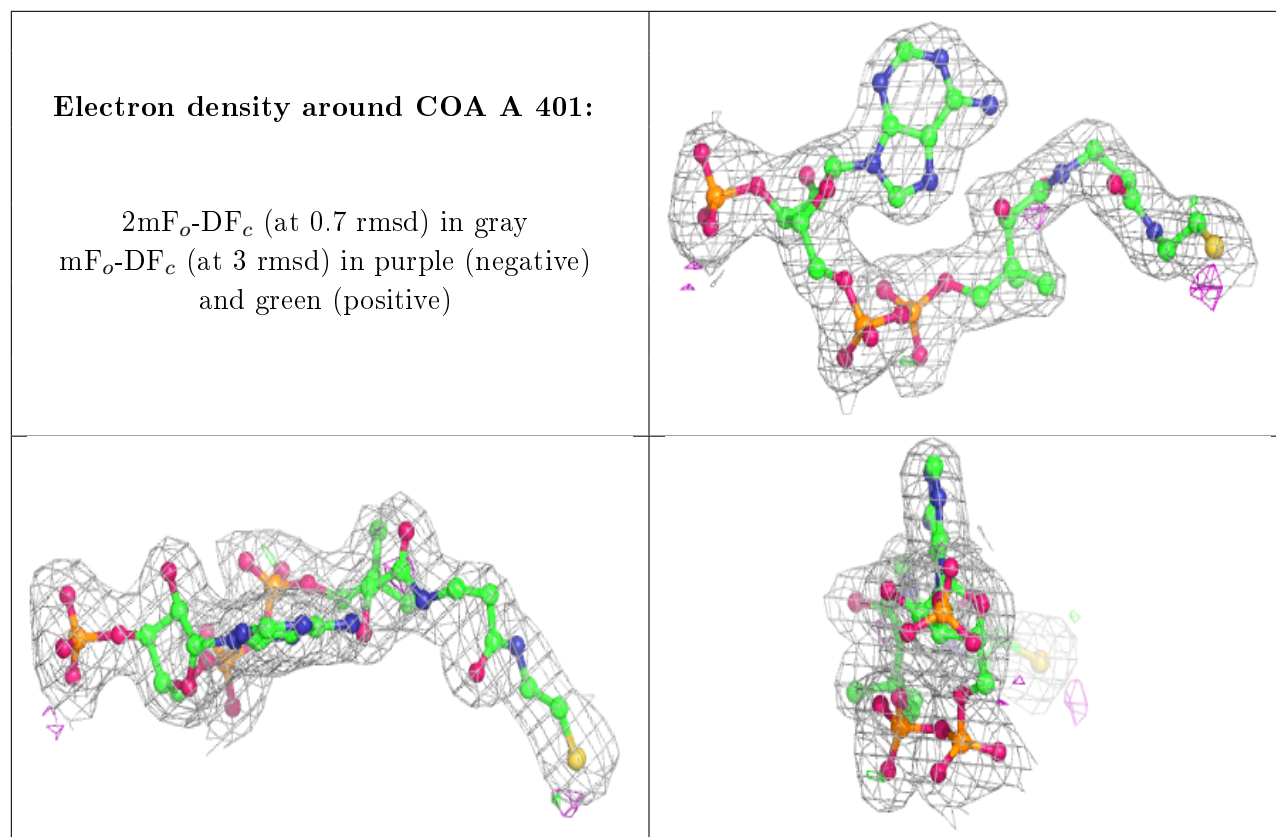
There are no monosaccharides in this entry.

6.4 Ligands [i](#)

In the following table, the Atoms column lists the number of modelled atoms in the group and the number defined in the chemical component dictionary. The B-factors column lists the minimum, median, 95th percentile and maximum values of B factors of atoms in the group. The column labelled 'Q< 0.9' lists the number of atoms with occupancy less than 0.9.

Mol	Type	Chain	Res	Atoms	RSCC	RSR	B-factors(Å ²)	Q<0.9
6	MAN	B	502	11/12	0.71	0.42	101,117,123,128	0
5	NAG	B	501	14/15	0.72	0.23	54,72,82,83	0
4	SO4	A	403	5/5	0.89	0.24	72,79,84,88	0
7	GCS	B	503	11/12	0.89	0.12	42,49,53,55	0
8	DKA	B	504	11/12	0.93	0.21	33,38,43,43	0
4	SO4	A	402	5/5	0.94	0.15	95,97,98,103	0
3	COA	A	401	48/48	0.97	0.08	29,34,49,53	0

The following is a graphical depiction of the model fit to experimental electron density of all instances of the Ligand of Interest. In addition, ligands with molecular weight > 250 and outliers as shown on the geometry validation Tables will also be included. Each fit is shown from different orientation to approximate a three-dimensional view.



6.5 Other polymers [i](#)

There are no such residues in this entry.