



Full wwPDB EM Validation Report ⓘ

Nov 6, 2022 – 11:29 AM EST

PDB ID : 6MHU
EMDB ID : EMD-9118
Title : Nucleotide-free Cryo-EM Structure of E.coli LptB2FG Transporter
Authors : Orlando, B.J.; Li, Y.; Liao, M.
Deposited on : 2018-09-18
Resolution : 4.00 Å(reported)

This is a Full wwPDB EM Validation Report for a publicly released PDB entry.

We welcome your comments at validation@mail.wwpdb.org

A user guide is available at

<https://www.wwpdb.org/validation/2017/EMValidationReportHelp>

with specific help available everywhere you see the ⓘ symbol.

The types of validation reports are described at

<http://www.wwpdb.org/validation/2017/FAQs#types>.

The following versions of software and data (see [references ⓘ](#)) were used in the production of this report:

EMDB validation analysis : 0.0.1.dev43
Mogul : 1.8.5 (274361), CSD as541be (2020)
MolProbity : 4.02b-467
buster-report : 1.1.7 (2018)
Percentile statistics : 20191225.v01 (using entries in the PDB archive December 25th 2019)
MapQ : 1.9.9
Ideal geometry (proteins) : Engh & Huber (2001)
Ideal geometry (DNA, RNA) : Parkinson et al. (1996)
Validation Pipeline (wwPDB-VP) : 2.31.2

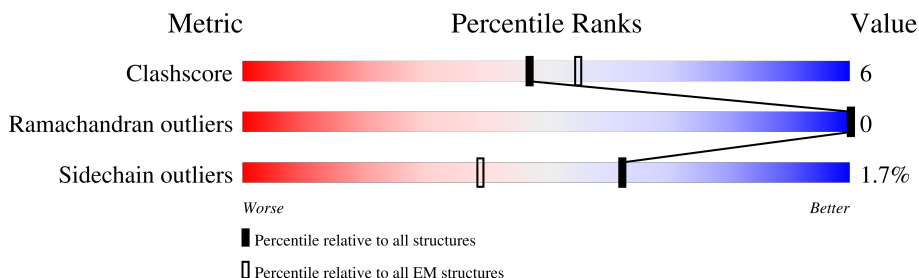
1 Overall quality at a glance

The following experimental techniques were used to determine the structure:

ELECTRON MICROSCOPY

The reported resolution of this entry is 4.00 Å.

Percentile scores (ranging between 0-100) for global validation metrics of the entry are shown in the following graphic. The table shows the number of entries on which the scores are based.



Metric	Whole archive (#Entries)	EM structures (#Entries)
Clashscore	158937	4297
Ramachandran outliers	154571	4023
Sidechain outliers	154315	3826

The table below summarises the geometric issues observed across the polymeric chains and their fit to the map. The red, orange, yellow and green segments of the bar indicate the fraction of residues that contain outliers for ≥ 3 , 2, 1 and 0 types of geometric quality criteria respectively. A grey segment represents the fraction of residues that are not modelled. The numeric value for each fraction is indicated below the corresponding segment, with a dot representing fractions $\leq 5\%$. The upper red bar (where present) indicates the fraction of residues that have poor fit to the EM map (all-atom inclusion $< 40\%$). The numeric value is given above the bar.

Mol	Chain	Length	Quality of chain
1	F	366	<div> <div>22%</div> <div>70%</div> <div>14%</div> <div>15%</div> </div>
2	G	360	<div> <div>18%</div> <div>81%</div> <div>13%</div> <div>5%</div> </div>
3	A	251	<div> <div>72%</div> <div>20%</div> <div>8%</div> </div>
3	B	251	<div> <div>69%</div> <div>23%</div> <div>8%</div> </div>

2 Entry composition

There are 4 unique types of molecules in this entry. The entry contains 8810 atoms, of which 0 are hydrogens and 0 are deuteriums.

In the tables below, the AltConf column contains the number of residues with at least one atom in alternate conformation and the Trace column contains the number of residues modelled with at most 2 atoms.

- Molecule 1 is a protein called Lipopolysaccharide export system permease protein LptF.

Mol	Chain	Residues	Atoms					AltConf	Trace
1	F	311	Total	C	N	O	S	0	0
			2393	1569	392	418	14		

- Molecule 2 is a protein called Lipopolysaccharide export system permease protein LptG.

Mol	Chain	Residues	Atoms					AltConf	Trace
2	G	341	Total	C	N	O	S	0	0
			2643	1726	434	465	18		

- Molecule 3 is a protein called Lipopolysaccharide export system ATP-binding protein LptB.

Mol	Chain	Residues	Atoms					AltConf	Trace
3	A	230	Total	C	N	O	S	0	0
			1787	1116	327	339	5		
3	B	230	Total	C	N	O	S	0	0
			1787	1116	327	339	5		

There are 20 discrepancies between the modelled and reference sequences:

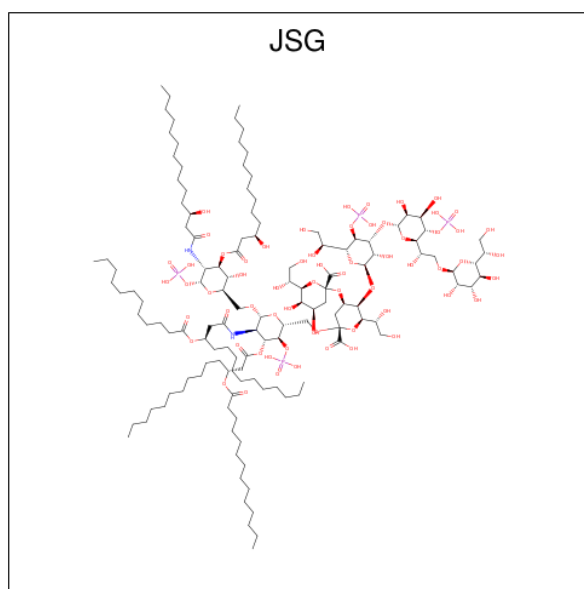
Chain	Residue	Modelled	Actual	Comment	Reference
A	-9	MET	-	expression tag	UNP P0A9V1
A	-8	GLY	-	expression tag	UNP P0A9V1
A	-7	HIS	-	expression tag	UNP P0A9V1
A	-6	HIS	-	expression tag	UNP P0A9V1
A	-5	HIS	-	expression tag	UNP P0A9V1
A	-4	HIS	-	expression tag	UNP P0A9V1
A	-3	HIS	-	expression tag	UNP P0A9V1
A	-2	HIS	-	expression tag	UNP P0A9V1
A	-1	HIS	-	expression tag	UNP P0A9V1
A	0	HIS	-	expression tag	UNP P0A9V1
B	-9	MET	-	expression tag	UNP P0A9V1
B	-8	GLY	-	expression tag	UNP P0A9V1
B	-7	HIS	-	expression tag	UNP P0A9V1

Continued on next page...

Continued from previous page...

Chain	Residue	Modelled	Actual	Comment	Reference
B	-6	HIS	-	expression tag	UNP P0A9V1
B	-5	HIS	-	expression tag	UNP P0A9V1
B	-4	HIS	-	expression tag	UNP P0A9V1
B	-3	HIS	-	expression tag	UNP P0A9V1
B	-2	HIS	-	expression tag	UNP P0A9V1
B	-1	HIS	-	expression tag	UNP P0A9V1
B	0	HIS	-	expression tag	UNP P0A9V1

- Molecule 4 is (2 {R},4 {R},5 {R},6 {R})-6-[(1 {R})-1,2-bis(oxidanyl)ethyl]-2-[(2 {R},4 {R},5 {R},6 {R})-6-[(1 {R})-1,2-bis(oxidanyl)ethyl]-5-[(2 {S},3 {S},4 {R},5 {R},6 {R})-6-[(1 {S})-1,2-bis(oxidanyl)ethyl]-4-[(2 {R},3 {S},4 {R},5 {S},6 {R})-6-[(1 {S})-2-[(2 {S},3 {S},4 {S},5 {S},6 {R})-6-[(1 {S})-1,2-bis(oxidanyl)ethyl]-3,4,5-tris(oxidanyl)oxan-2-yl]oxy-1-oxidanyl-ethyl]-3,4-bis(oxidanyl)-5-phosphonooxy-oxan-2-yl]oxy-3-oxidanyl-5-phosphonooxy-oxan-2-yl]oxy-2-carboxy-2-[(2 {R},3 {S},4 {R},5 {R},6 {R})-5-[(3 {R})-3-dodecanoyloxytetradecanoyl]amino]-6-[(2 {R},3 {S},4 {R},5 {R},6 {R})-3-oxidanyl-5-[(3 {R})-3-oxidanyltetradecanoyl]amino]-4-[(3 {R})-3-oxidanyltetradecanoyl]oxy-6-phosphonooxy-oxan-2-yl]methoxy]-3-phosphonooxy-4-[(3 {R})-3-tetradecanoyloxytetradecanoyl]oxy-oxan-2-yl]methoxy]oxan-4-yl]oxy-4,5-bis(oxidanyl)oxane-2-carboxylic acid (three-letter code: JSG) (formula: C₁₃₁H₂₄₀N₂O₆₃P₄).

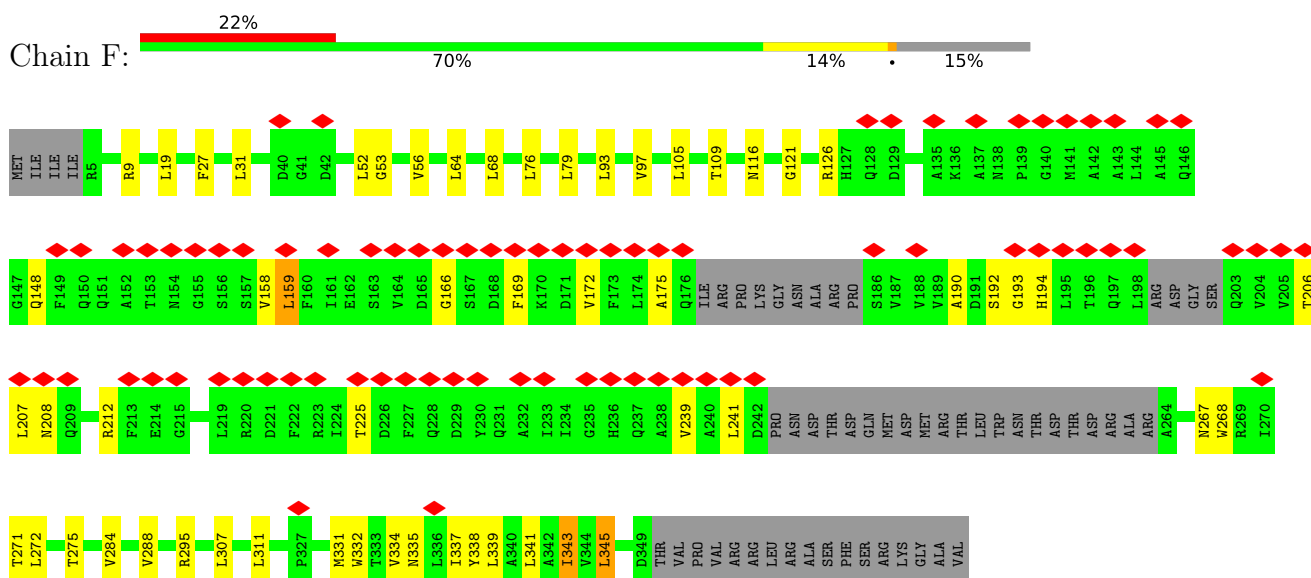


Mol	Chain	Residues	Atoms					AltConf
4	G	1	Total	C	N	O	P	0
			200	131	2	63	4	

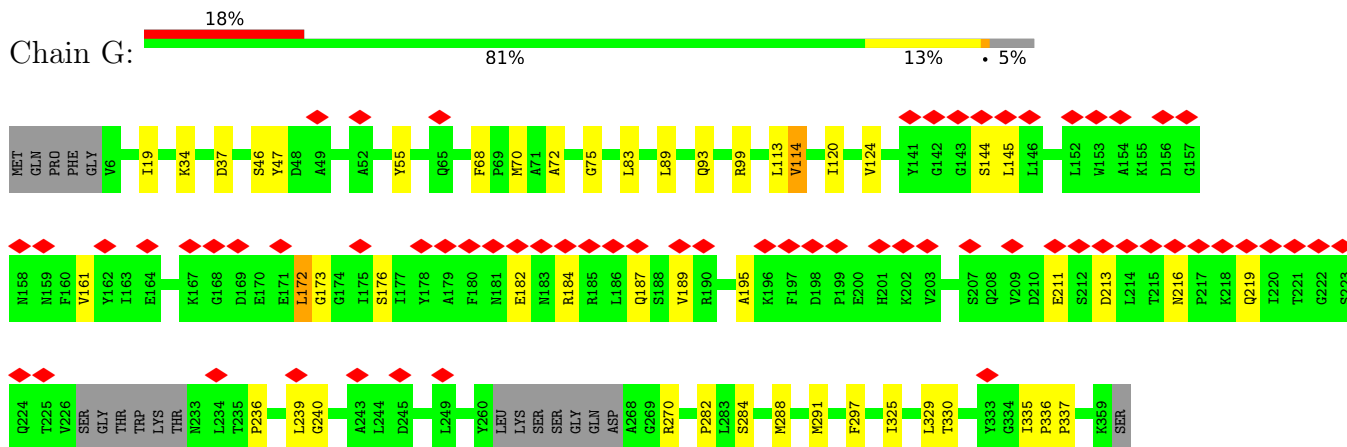
3 Residue-property plots

These plots are drawn for all protein, RNA, DNA and oligosaccharide chains in the entry. The first graphic for a chain summarises the proportions of the various outlier classes displayed in the second graphic. The second graphic shows the sequence view annotated by issues in geometry and atom inclusion in map density. Residues are color-coded according to the number of geometric quality criteria for which they contain at least one outlier: green = 0, yellow = 1, orange = 2 and red = 3 or more. A red diamond above a residue indicates a poor fit to the EM map for this residue (all-atom inclusion < 40%). Stretches of 2 or more consecutive residues without any outlier are shown as a green connector. Residues present in the sample, but not in the model, are shown in grey.

- Molecule 1: Lipopolysaccharide export system permease protein LptF

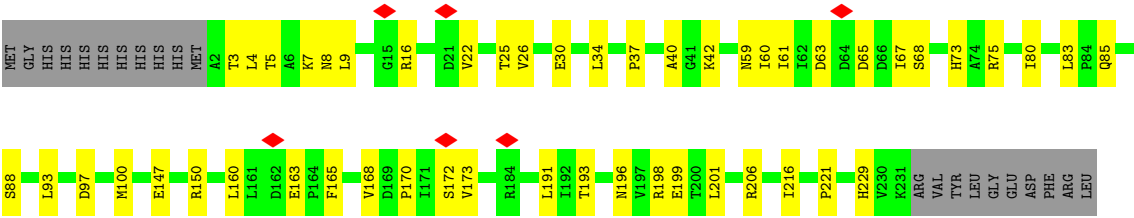


- Molecule 2: Lipopolysaccharide export system permease protein LptG

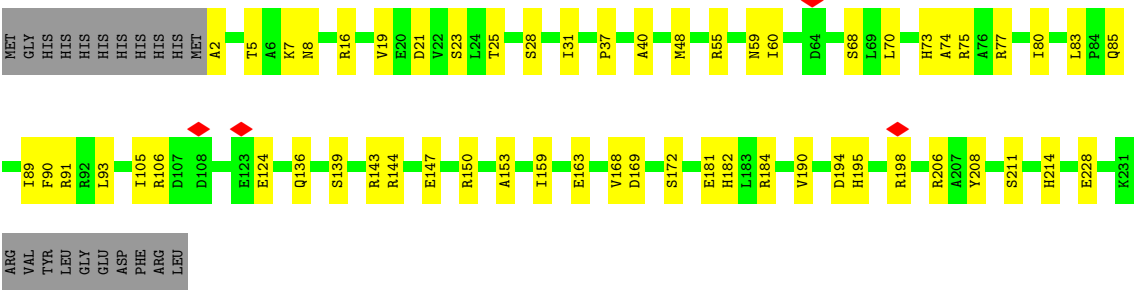


- Molecule 3: Lipopolysaccharide export system ATP-binding protein LptB





• Molecule 3: Lipopolysaccharide export system ATP-binding protein LptB



4 Experimental information

Property	Value	Source
EM reconstruction method	SINGLE PARTICLE	Depositor
Imposed symmetry	POINT, C1	Depositor
Number of particles used	103538	Depositor
Resolution determination method	FSC 0.143 CUT-OFF	Depositor
CTF correction method	PHASE FLIPPING AND AMPLITUDE CORRECTION	Depositor
Microscope	FEI POLARA 300	Depositor
Voltage (kV)	300	Depositor
Electron dose ($e^-/\text{\AA}^2$)	52	Depositor
Minimum defocus (nm)	Not provided	
Maximum defocus (nm)	Not provided	
Magnification	Not provided	
Image detector	GATAN K2 SUMMIT (4k x 4k)	Depositor
Maximum map value	0.300	Depositor
Minimum map value	-0.167	Depositor
Average map value	0.000	Depositor
Map value standard deviation	0.013	Depositor
Recommended contour level	0.04	Depositor
Map size (Å)	236.16, 236.16, 236.16	wwPDB
Map dimensions	192, 192, 192	wwPDB
Map angles (°)	90.0, 90.0, 90.0	wwPDB
Pixel spacing (Å)	1.23, 1.23, 1.23	Depositor

5 Model quality

5.1 Standard geometry

Bond lengths and bond angles in the following residue types are not validated in this section: JSG

The Z score for a bond length (or angle) is the number of standard deviations the observed value is removed from the expected value. A bond length (or angle) with $|Z| > 5$ is considered an outlier worth inspection. RMSZ is the root-mean-square of all Z scores of the bond lengths (or angles).

Mol	Chain	Bond lengths		Bond angles	
		RMSZ	$\# Z > 5$	RMSZ	$\# Z > 5$
1	F	0.36	0/2435	0.70	2/3309 (0.1%)
2	G	0.39	0/2698	0.67	0/3652
3	A	0.32	0/1812	0.55	0/2451
3	B	0.32	0/1812	0.57	0/2451
All	All	0.35	0/8757	0.64	2/11863 (0.0%)

Chiral center outliers are detected by calculating the chiral volume of a chiral center and verifying if the center is modelled as a planar moiety or with the opposite hand. A planarity outlier is detected by checking planarity of atoms in a peptide group, atoms in a mainchain group or atoms of a sidechain that are expected to be planar.

Mol	Chain	#Chirality outliers	#Planarity outliers
1	F	0	1
2	G	0	2
3	B	0	1
All	All	0	4

There are no bond length outliers.

All (2) bond angle outliers are listed below:

Mol	Chain	Res	Type	Atoms	Z	Observed(°)	Ideal(°)
1	F	159	LEU	CA-CB-CG	5.40	127.73	115.30
1	F	19	LEU	CA-CB-CG	5.04	126.90	115.30

There are no chirality outliers.

All (4) planarity outliers are listed below:

Mol	Chain	Res	Type	Group
3	B	228	GLU	Peptide

Continued on next page...

Continued from previous page...

Mol	Chain	Res	Type	Group
1	F	288	VAL	Peptide
2	G	172	LEU	Peptide
2	G	173	GLY	Peptide

5.2 Too-close contacts [i](#)

In the following table, the Non-H and H(model) columns list the number of non-hydrogen atoms and hydrogen atoms in the chain respectively. The H(added) column lists the number of hydrogen atoms added and optimized by MolProbity. The Clashes column lists the number of clashes within the asymmetric unit, whereas Symm-Clashes lists symmetry-related clashes.

Mol	Chain	Non-H	H(model)	H(added)	Clashes	Symm-Clashes
1	F	2393	0	2502	29	0
2	G	2643	0	2732	25	0
3	A	1787	0	1811	27	0
3	B	1787	0	1811	34	0
4	G	200	0	0	1	0
All	All	8810	0	8856	113	0

The all-atom clashscore is defined as the number of clashes found per 1000 atoms (including hydrogen atoms). The all-atom clashscore for this structure is 6.

All (113) close contacts within the same asymmetric unit are listed below, sorted by their clash magnitude.

Atom-1	Atom-2	Interatomic distance (Å)	Clash overlap (Å)
1:F:52:LEU:O	1:F:56:VAL:HG23	1.83	0.78
3:A:196:ASN:HB3	3:A:199:GLU:HB2	1.73	0.69
3:B:7:LYS:HB2	3:B:59:ASN:HB2	1.76	0.67
1:F:212:ARG:H	1:F:225:THR:HG22	1.65	0.61
3:B:60:ILE:H	3:B:68:SER:HG	1.47	0.61
3:A:5:THR:HG23	3:A:25:THR:HG22	1.83	0.60
3:A:201:LEU:HG	3:A:221:PRO:HB3	1.85	0.59
3:A:198:ARG:HH21	3:B:198:ARG:HH21	1.51	0.58
3:B:206:ARG:NH1	3:B:208:TYR:OH	2.35	0.58
2:G:93:GLN:HE21	3:A:73:HIS:HD2	1.51	0.58
3:A:37:PRO:HG2	3:A:40:ALA:HB3	1.85	0.58
1:F:68:LEU:HD11	1:F:105:LEU:HB3	1.85	0.57
3:B:144:ARG:NH2	3:B:147:GLU:OE1	2.37	0.57
3:A:165:PHE:O	3:A:196:ASN:ND2	2.38	0.57
3:B:37:PRO:HG2	3:B:40:ALA:HB3	1.86	0.57

Continued on next page...

Continued from previous page...

Atom-1	Atom-2	Interatomic distance (Å)	Clash overlap (Å)
3:B:90:PHE:H	3:B:150:ARG:HH22	1.51	0.57
2:G:172:LEU:HB2	2:G:195:ALA:HB3	1.87	0.57
3:B:85:GLN:NE2	3:B:163:GLU:OE1	2.38	0.56
2:G:114:VAL:HG23	2:G:282:PRO:HB3	1.86	0.56
3:A:83:LEU:HD11	3:A:147:GLU:HB3	1.88	0.55
1:F:268:TRP:HA	1:F:271:THR:HG22	1.89	0.55
3:B:83:LEU:HD11	3:B:147:GLU:HB3	1.89	0.55
1:F:339:LEU:O	1:F:343:ILE:HG12	2.06	0.55
3:B:106:ARG:NH1	3:B:153:ALA:O	2.41	0.54
3:B:55:ARG:HE	3:B:68:SER:HB3	1.72	0.54
3:B:5:THR:HG23	3:B:25:THR:HG22	1.89	0.54
2:G:120:ILE:HG23	2:G:124:VAL:HB	1.89	0.54
2:G:216:ASN:HD22	2:G:219:GLN:HB3	1.73	0.54
3:A:37:PRO:O	3:A:42:LYS:NZ	2.37	0.54
3:B:91:ARG:HD2	3:B:136:GLN:HG3	1.89	0.53
3:A:160:LEU:HG	3:A:191:LEU:HB3	1.90	0.53
3:A:67:ILE:HD12	3:A:75:ARG:HG2	1.90	0.53
1:F:239:VAL:HG13	1:F:241:LEU:H	1.73	0.53
2:G:37:ASP:OD2	4:G:401:JSG:OAS	2.27	0.53
2:G:284:SER:O	2:G:288:MET:HB2	2.09	0.52
3:A:30:GLU:OE2	3:A:206:ARG:NH2	2.42	0.52
1:F:172:VAL:HB	1:F:190:ALA:HB3	1.91	0.51
3:B:211:SER:N	3:B:214:HIS:O	2.43	0.51
3:B:31:ILE:HG13	3:B:184:ARG:HD3	1.92	0.51
2:G:182:GLU:O	2:G:184:ARG:NH2	2.43	0.51
3:A:9:LEU:HB2	3:A:22:VAL:HB	1.92	0.51
1:F:267:ASN:ND2	1:F:331:MET:SD	2.73	0.51
1:F:334:VAL:HA	1:F:337:ILE:HG22	1.91	0.51
2:G:70:MET:N	2:G:70:MET:SD	2.84	0.51
1:F:64:LEU:HD12	1:F:109:THR:HG23	1.92	0.50
3:B:90:PHE:HB3	3:B:93:LEU:HD13	1.91	0.50
3:B:75:ARG:HB3	3:B:80:ILE:HD12	1.93	0.50
2:G:19:ILE:HG21	2:G:113:LEU:HD21	1.93	0.50
1:F:27:PHE:HE1	1:F:56:VAL:HG22	1.75	0.50
1:F:158:VAL:H	1:F:175:ALA:HB3	1.77	0.50
2:G:236:PRO:O	2:G:240:GLY:N	2.45	0.49
1:F:76:LEU:HA	1:F:79:LEU:HB2	1.94	0.49
3:A:216:ILE:HD12	3:A:229:HIS:HB3	1.94	0.49
3:A:170:PRO:HA	3:A:173:VAL:HB	1.95	0.48
3:A:34:LEU:HB3	3:A:193:THR:HG22	1.96	0.48
1:F:31:LEU:HD12	1:F:52:LEU:HD11	1.95	0.48

Continued on next page...

Continued from previous page...

Atom-1	Atom-2	Interatomic distance (Å)	Clash overlap (Å)
3:B:73:HIS:O	3:B:77:ARG:N	2.47	0.48
1:F:341:LEU:O	1:F:345:LEU:HB2	2.13	0.48
2:G:19:ILE:HD13	2:G:75:GLY:HA3	1.96	0.47
3:A:60:ILE:H	3:A:68:SER:HG	1.62	0.47
3:A:88:SER:O	3:A:150:ARG:NH2	2.47	0.47
3:B:163:GLU:HG2	3:B:194:ASP:HA	1.97	0.47
1:F:193:GLY:HA2	1:F:207:LEU:HA	1.97	0.47
2:G:336:PRO:HA	2:G:337:PRO:HD3	1.84	0.47
3:B:89:ILE:HA	3:B:150:ARG:HH12	1.78	0.46
1:F:307:LEU:O	1:F:311:LEU:HB2	2.15	0.46
1:F:93:LEU:HD23	1:F:97:VAL:HG11	1.96	0.46
2:G:68:PHE:O	2:G:72:ALA:HB2	2.16	0.46
3:B:8:ASN:ND2	3:B:21:ASP:OD1	2.40	0.46
1:F:192:SER:HB2	1:F:208:ASN:HB2	1.98	0.45
3:B:60:ILE:N	3:B:68:SER:OG	2.42	0.45
3:A:80:ILE:HG23	3:A:160:LEU:HD13	1.98	0.45
2:G:325:ILE:O	2:G:329:LEU:N	2.49	0.45
3:A:3:THR:N	3:A:63:ASP:OD1	2.42	0.45
2:G:34:LYS:HD2	2:G:55:TYR:HE1	1.82	0.45
2:G:83:LEU:O	2:G:89:LEU:N	2.42	0.44
3:B:139:SER:O	3:B:143:ARG:HB2	2.17	0.44
3:B:169:ASP:N	3:B:169:ASP:OD1	2.48	0.44
1:F:272:LEU:O	1:F:275:THR:OG1	2.29	0.44
3:B:159:ILE:HG23	3:B:190:VAL:HG13	2.00	0.44
3:B:181:GLU:HA	3:B:184:ARG:HG2	2.00	0.43
3:A:85:GLN:HG3	3:A:163:GLU:HB2	2.00	0.43
3:A:168:VAL:HB	3:A:172:SER:HB3	2.01	0.43
3:B:105:ILE:H	3:B:105:ILE:HG13	1.71	0.43
2:G:330:THR:HG22	2:G:335:ILE:HG22	2.01	0.43
2:G:89:LEU:HD21	2:G:297:PHE:HE1	1.83	0.43
3:B:70:LEU:HB3	3:B:74:ALA:HB3	2.01	0.42
3:B:194:ASP:OD1	3:B:195:HIS:N	2.52	0.42
3:B:19:VAL:HG11	3:B:48:MET:HE1	2.01	0.42
3:B:124:GLU:OE2	3:B:182:HIS:NE2	2.44	0.42
3:A:93:LEU:HD23	3:A:97:ASP:HB3	2.01	0.42
3:A:7:LYS:HB2	3:A:59:ASN:HB2	2.02	0.42
3:A:9:LEU:HD21	3:A:60:ILE:HD11	2.01	0.42
1:F:53:GLY:HA2	1:F:56:VAL:HG23	2.01	0.41
1:F:271:THR:O	1:F:275:THR:HG23	2.20	0.41
1:F:27:PHE:CE1	1:F:56:VAL:HG22	2.55	0.41
3:B:2:ALA:O	3:B:28:SER:OG	2.28	0.41

Continued on next page...

Continued from previous page...

Atom-1	Atom-2	Interatomic distance (Å)	Clash overlap (Å)
1:F:345:LEU:HD13	1:F:345:LEU:HA	1.83	0.41
2:G:189:VAL:H	2:G:211:GLU:HA	1.85	0.41
1:F:332:TRP:HA	1:F:335:ASN:HB2	2.03	0.41
3:A:4:LEU:HB3	3:A:26:VAL:HG13	2.02	0.41
3:A:61:ILE:HG23	3:A:65:ASP:H	1.84	0.41
2:G:161:VAL:HG13	2:G:176:SER:H	1.85	0.41
1:F:116:ASN:O	1:F:121:GLY:N	2.48	0.41
3:B:168:VAL:HB	3:B:172:SER:HB2	2.02	0.41
1:F:194:HIS:HB2	1:F:206:THR:HG23	2.03	0.41
1:F:338:TYR:HD1	1:F:338:TYR:HA	1.74	0.41
3:B:8:ASN:N	3:B:23:SER:OG	2.46	0.41
2:G:187:GLN:HA	2:G:213:ASP:HA	2.02	0.40
2:G:144:SER:OG	2:G:145:LEU:N	2.54	0.40
2:G:236:PRO:HD2	2:G:239:LEU:HD12	2.02	0.40
1:F:166:GLY:HA2	1:F:169:PHE:HE1	1.86	0.40
2:G:46:SER:OG	2:G:47:TYR:N	2.55	0.40

There are no symmetry-related clashes.

5.3 Torsion angles ⓘ

5.3.1 Protein backbone ⓘ

In the following table, the Percentiles column shows the percent Ramachandran outliers of the chain as a percentile score with respect to all PDB entries followed by that with respect to all EM entries.

The Analysed column shows the number of residues for which the backbone conformation was analysed, and the total number of residues.

Mol	Chain	Analysed	Favoured	Allowed	Outliers	Percentiles	
1	F	303/366 (83%)	264 (87%)	39 (13%)	0	100	100
2	G	335/360 (93%)	293 (88%)	42 (12%)	0	100	100
3	A	228/251 (91%)	215 (94%)	13 (6%)	0	100	100
3	B	228/251 (91%)	203 (89%)	25 (11%)	0	100	100
All	All	1094/1228 (89%)	975 (89%)	119 (11%)	0	100	100

There are no Ramachandran outliers to report.

5.3.2 Protein sidechains ⓘ

In the following table, the Percentiles column shows the percent sidechain outliers of the chain as a percentile score with respect to all PDB entries followed by that with respect to all EM entries.

The Analysed column shows the number of residues for which the sidechain conformation was analysed, and the total number of residues.

Mol	Chain	Analysed	Rotameric	Outliers	Percentiles	
1	F	258/307 (84%)	250 (97%)	8 (3%)	40	63
2	G	284/300 (95%)	280 (99%)	4 (1%)	67	81
3	A	192/211 (91%)	189 (98%)	3 (2%)	62	79
3	B	192/211 (91%)	191 (100%)	1 (0%)	88	93
All	All	926/1029 (90%)	910 (98%)	16 (2%)	62	78

All (16) residues with a non-rotameric sidechain are listed below:

Mol	Chain	Res	Type
1	F	9	ARG
1	F	126	ARG
1	F	148	GLN
1	F	159	LEU
1	F	284	VAL
1	F	295	ARG
1	F	343	ILE
1	F	345	LEU
2	G	99	ARG
2	G	114	VAL
2	G	270	ARG
2	G	291	MET
3	A	8	ASN
3	A	16	ARG
3	A	100	MET
3	B	16	ARG

Sometimes sidechains can be flipped to improve hydrogen bonding and reduce clashes. All (5) such sidechains are listed below:

Mol	Chain	Res	Type
1	F	148	GLN
2	G	216	ASN
3	A	8	ASN

Continued on next page...

Continued from previous page...

Mol	Chain	Res	Type
3	A	73	HIS
3	A	196	ASN

5.3.3 RNA ⓘ

There are no RNA molecules in this entry.

5.4 Non-standard residues in protein, DNA, RNA chains ⓘ

There are no non-standard protein/DNA/RNA residues in this entry.

5.5 Carbohydrates ⓘ

There are no monosaccharides in this entry.

5.6 Ligand geometry ⓘ

1 ligand is modelled in this entry.

In the following table, the Counts columns list the number of bonds (or angles) for which Mogul statistics could be retrieved, the number of bonds (or angles) that are observed in the model and the number of bonds (or angles) that are defined in the Chemical Component Dictionary. The Link column lists molecule types, if any, to which the group is linked. The Z score for a bond length (or angle) is the number of standard deviations the observed value is removed from the expected value. A bond length (or angle) with $|Z| > 2$ is considered an outlier worth inspection. RMSZ is the root-mean-square of all Z scores of the bond lengths (or angles).

Mol	Type	Chain	Res	Link	Bond lengths			Bond angles		
					Counts	RMSZ	$\# Z > 2$	Counts	RMSZ	$\# Z > 2$
4	JSG	G	401	-	203,206,206	0.96	10 (4%)	257,278,278	1.48	35 (13%)

In the following table, the Chirals column lists the number of chiral outliers, the number of chiral centers analysed, the number of these observed in the model and the number defined in the Chemical Component Dictionary. Similar counts are reported in the Torsion and Rings columns. '-' means no outliers of that kind were identified.

Mol	Type	Chain	Res	Link	Chirals	Torsions	Rings
4	JSG	G	401	-	-	62/195/333/333	1/7/7/7

All (10) bond length outliers are listed below:

Mol	Chain	Res	Type	Atoms	Z	Observed(Å)	Ideal(Å)
4	G	401	JSG	O1-C1	3.81	1.46	1.40
4	G	401	JSG	CBG-CBE	3.68	1.59	1.52
4	G	401	JSG	OBH-CBA	3.51	1.47	1.42
4	G	401	JSG	OBH-CBG	2.90	1.48	1.44
4	G	401	JSG	ODA-CDB	2.86	1.45	1.40
4	G	401	JSG	C1-C2	2.49	1.57	1.53
4	G	401	JSG	PHO-OHR	-2.03	1.47	1.54
4	G	401	JSG	OBF-CCB	2.02	1.47	1.41
4	G	401	JSG	PHG-OHJ	-2.01	1.47	1.54
4	G	401	JSG	PHK-OHM	-2.01	1.47	1.54

All (35) bond angle outliers are listed below:

Mol	Chain	Res	Type	Atoms	Z	Observed(°)	Ideal(°)
4	G	401	JSG	O5-C5-C6	6.31	119.41	106.67
4	G	401	JSG	O3-C3-C2	5.17	117.58	107.91
4	G	401	JSG	C3-O3-CFK	4.67	125.30	117.53
4	G	401	JSG	CAP-OAQ-CEE	-4.65	109.79	117.53
4	G	401	JSG	CBB-CBC-CBE	-4.35	103.48	111.06
4	G	401	JSG	OFJ-CEW-C8	4.16	114.82	106.65
4	G	401	JSG	OFZ-CFM-CFL	4.13	114.76	106.65
4	G	401	JSG	CAV-CAT-CAR	-4.02	103.70	112.09
4	G	401	JSG	CAV-O1-C1	3.49	120.55	113.74
4	G	401	JSG	CAN-NAO-CDO	-3.47	117.79	122.90
4	G	401	JSG	O6-CBA-OBH	-3.05	101.61	110.07
4	G	401	JSG	C4-C3-C2	-2.85	105.27	110.57
4	G	401	JSG	C1-C2-C3	-2.82	104.71	109.88
4	G	401	JSG	OAQ-CEE-CEF	2.67	116.36	111.46
4	G	401	JSG	C3-C2-N2	2.65	115.31	110.91
4	G	401	JSG	OBF-CBE-CBG	2.62	114.12	107.48
4	G	401	JSG	C1-O5-C5	2.61	118.81	113.69
4	G	401	JSG	CBQ-CBR-CBT	-2.60	108.30	110.84
4	G	401	JSG	CCO-OCJ-CCD	-2.58	111.59	117.96
4	G	401	JSG	CBA-OBH-CBG	2.56	120.16	114.20
4	G	401	JSG	C2-N2-C7	-2.56	119.13	122.90
4	G	401	JSG	ODL-CDF-CDE	2.47	111.34	107.87
4	G	401	JSG	CEW-OFJ-CGB	2.47	123.86	117.79
4	G	401	JSG	CDB-ODL-CDF	2.41	116.95	113.06
4	G	401	JSG	O6-C6-C5	2.28	112.71	107.68
4	G	401	JSG	CCT-CCS-CCR	-2.19	110.33	114.18
4	G	401	JSG	OHN-PHK-OHM	2.18	115.98	107.64
4	G	401	JSG	OCK-PHO-OHQ	-2.18	100.97	109.39
4	G	401	JSG	CBI-CBG-CBE	2.11	117.88	114.18

Continued on next page...

Continued from previous page...

Mol	Chain	Res	Type	Atoms	Z	Observed(°)	Ideal(°)
4	G	401	JSG	OES-CEE-CEF	-2.10	120.09	124.73
4	G	401	JSG	CCU-ODA-CDB	-2.08	109.67	113.74
4	G	401	JSG	OAU-CAL-CAN	-2.06	106.56	110.58
4	G	401	JSG	OBD-CBC-CBE	2.04	115.47	108.73
4	G	401	JSG	CDG-CDF-CDE	-2.02	110.69	114.03
4	G	401	JSG	OAZ-CAX-CBA	-2.00	117.25	123.70

There are no chirality outliers.

All (62) torsion outliers are listed below:

Mol	Chain	Res	Type	Atoms
4	G	401	JSG	C2-C1-O1-CAV
4	G	401	JSG	O5-C1-O1-CAV
4	G	401	JSG	OAY-CAX-CBA-O6
4	G	401	JSG	CAX-CBA-O6-C6
4	G	401	JSG	CBB-CBA-O6-C6
4	G	401	JSG	OBH-CBA-O6-C6
4	G	401	JSG	OBN-CBM-CBP-OB
4	G	401	JSG	OBW-CBP-OB-CBC
4	G	401	JSG	CCF-CCE-OCK-PHO
4	G	401	JSG	CCE-CCF-CCG-CCH
4	G	401	JSG	CCR-CCS-CCT-CCU
4	G	401	JSG	CCR-CCS-CCT-OCZ
4	G	401	JSG	OCY-CCS-CCT-CCU
4	G	401	JSG	OCY-CCS-CCT-OCZ
4	G	401	JSG	CCS-CCT-CCU-ODA
4	G	401	JSG	OCZ-CCT-CCU-ODA
4	G	401	JSG	ODL-CDB-ODA-CCU
4	G	401	JSG	C8-CEW-OFJ-CGB
4	G	401	JSG	OFY-CFK-O3-C3
4	G	401	JSG	CFL-CFM-CFN-CFO
4	G	401	JSG	OFZ-CFM-CFN-CFO
4	G	401	JSG	CFN-CFM-OFZ-CGN
4	G	401	JSG	CCE-OCK-PHO-OHQ
4	G	401	JSG	OCL-CCB-OB-CBE
4	G	401	JSG	OAU-CAT-CAV-O1
4	G	401	JSG	CFL-CFK-O3-C3
4	G	401	JSG	OGO-CGN-OFZ-CFM
4	G	401	JSG	CAR-CAT-CAV-O1
4	G	401	JSG	CGP-CGN-OFZ-CFM
4	G	401	JSG	C2-C3-O3-CFK
4	G	401	JSG	CDC-CDB-ODA-CCU

Continued on next page...

Continued from previous page...

Mol	Chain	Res	Type	Atoms
4	G	401	JSG	CGN-CGP-CGQ-CGR
4	G	401	JSG	CGV-CGW-CGX-CGY
4	G	401	JSG	OBJ-CBI-CBK-OBL
4	G	401	JSG	CGD-CGE-CGF-CGG
4	G	401	JSG	CFO-CFP-CFQ-CFR
4	G	401	JSG	CEH-CEI-CEJ-CEK
4	G	401	JSG	CGR-CGS-CGT-CGU
4	G	401	JSG	CGY-CGZ-CHA-CHB
4	G	401	JSG	CFQ-CFR-CFS-CFT
4	G	401	JSG	C5-C6-O6-CBA
4	G	401	JSG	CGU-CGV-CGW-CGX
4	G	401	JSG	OBH-CBG-CBI-CBK
4	G	401	JSG	CDU-CDV-CDW-CDX
4	G	401	JSG	CEG-CEH-CEI-CEJ
4	G	401	JSG	CGX-CGY-CGZ-CHA
4	G	401	JSG	C4-C3-O3-CFK
4	G	401	JSG	CFD-CFE-CFF-CFG
4	G	401	JSG	OCY-CCO-OCJ-CCD
4	G	401	JSG	CDW-CDX-CDY-CDZ
4	G	401	JSG	CCP-CCO-OCJ-CCD
4	G	401	JSG	CEO-CEP-CEQ-CER
4	G	401	JSG	CCD-CCE-OCK-PHO
4	G	401	JSG	CCE-CCF-CCG-OCM
4	G	401	JSG	CDE-CDF-CDG-ODM
4	G	401	JSG	CEF-CEE-OAQ-CAP
4	G	401	JSG	CFB-CFC-CFD-CFE
4	G	401	JSG	CEF-CEG-CEH-CEI
4	G	401	JSG	CBE-CBG-CBI-CBK
4	G	401	JSG	CDS-CDT-CDU-CDV
4	G	401	JSG	CEX-CEW-OFJ-CGB
4	G	401	JSG	OET-CEG-CEH-CEI

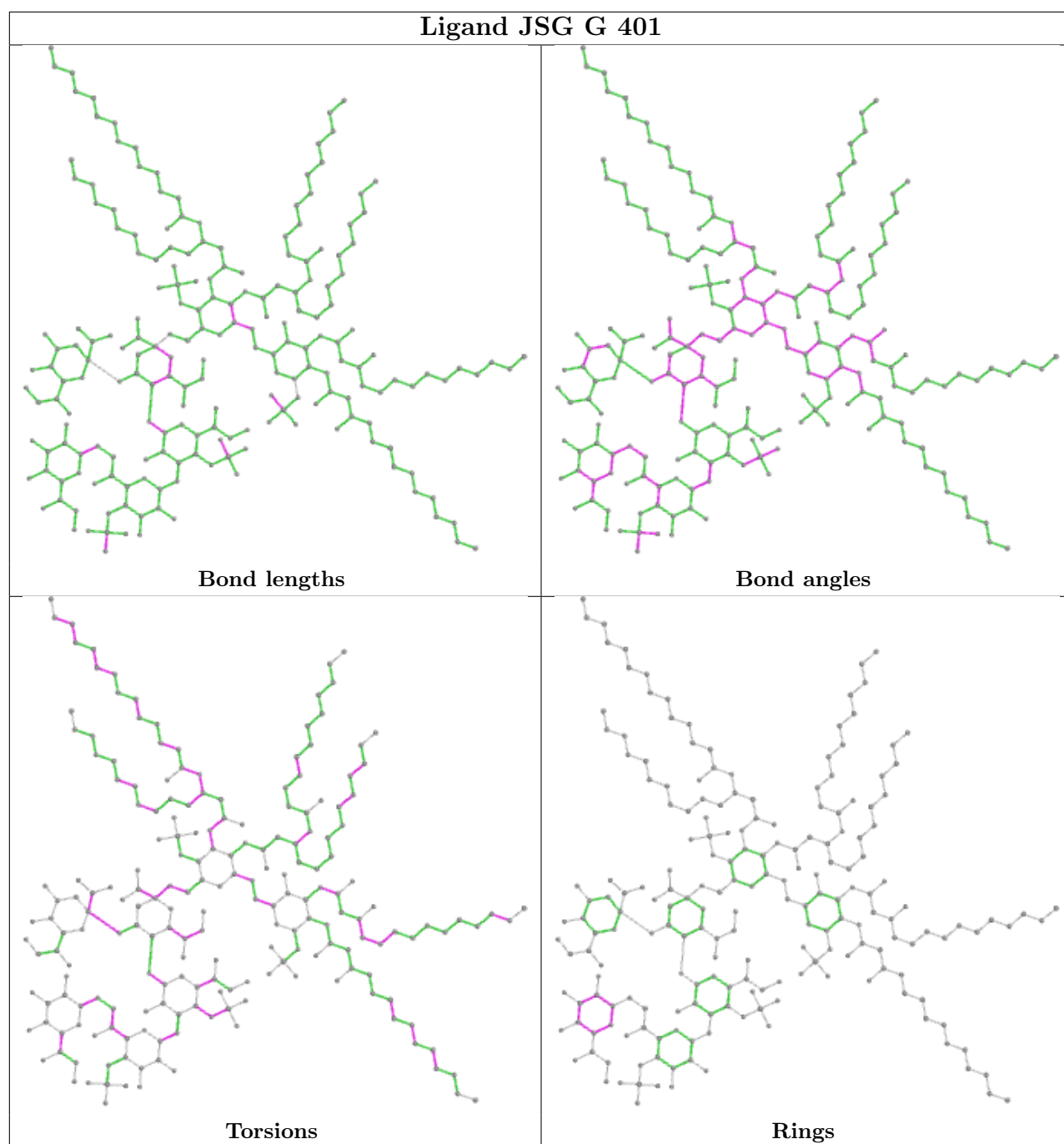
All (1) ring outliers are listed below:

Mol	Chain	Res	Type	Atoms
4	G	401	JSG	CDB-CDC-CDD-CDE-CDF-ODL

1 monomer is involved in 1 short contact:

Mol	Chain	Res	Type	Clashes	Symm-Clashes
4	G	401	JSG	1	0

The following is a two-dimensional graphical depiction of Mogul quality analysis of bond lengths, bond angles, torsion angles, and ring geometry for all instances of the Ligand of Interest. In addition, ligands with molecular weight > 250 and outliers as shown on the validation Tables will also be included. For torsion angles, if less than 5% of the Mogul distribution of torsion angles is within 10 degrees of the torsion angle in question, then that torsion angle is considered an outlier. Any bond that is central to one or more torsion angles identified as an outlier by Mogul will be highlighted in the graph. For rings, the root-mean-square deviation (RMSD) between the ring in question and similar rings identified by Mogul is calculated over all ring torsion angles. If the average RMSD is greater than 60 degrees and the minimal RMSD between the ring in question and any Mogul-identified rings is also greater than 60 degrees, then that ring is considered an outlier. The outliers are highlighted in purple. The color gray indicates Mogul did not find sufficient equivalents in the CSD to analyse the geometry.



5.7 Other polymers [i](#)

There are no such residues in this entry.

5.8 Polymer linkage issues [i](#)

There are no chain breaks in this entry.

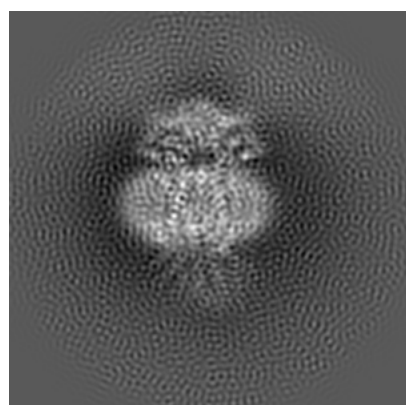
6 Map visualisation [i](#)

This section contains visualisations of the EMDB entry EMD-9118. These allow visual inspection of the internal detail of the map and identification of artifacts.

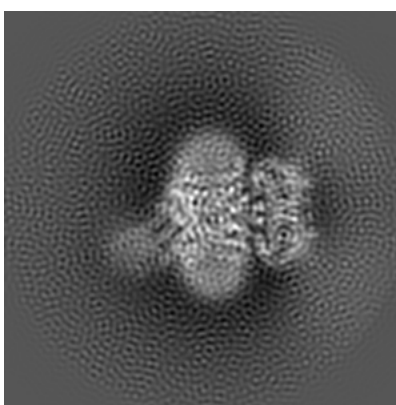
No raw map or half-maps were deposited for this entry and therefore no images, graphs, etc. pertaining to the raw map can be shown.

6.1 Orthogonal projections [i](#)

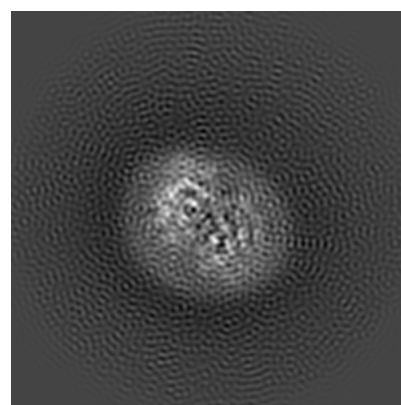
6.1.1 Primary map



X



Y

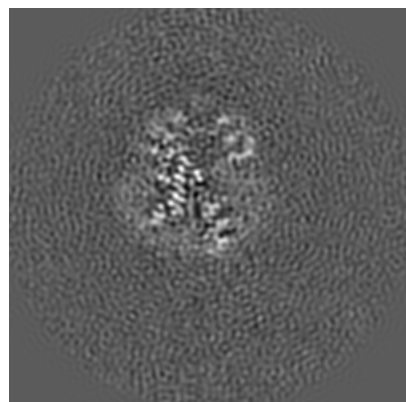


Z

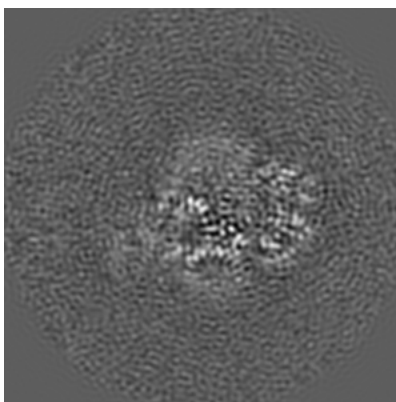
The images above show the map projected in three orthogonal directions.

6.2 Central slices [i](#)

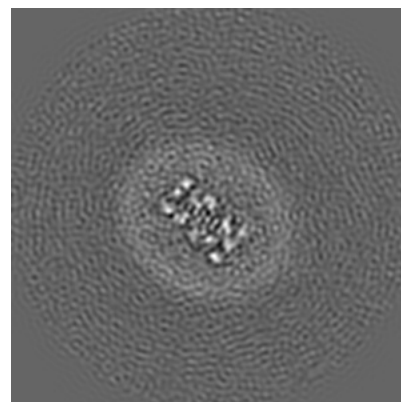
6.2.1 Primary map



X Index: 96



Y Index: 96

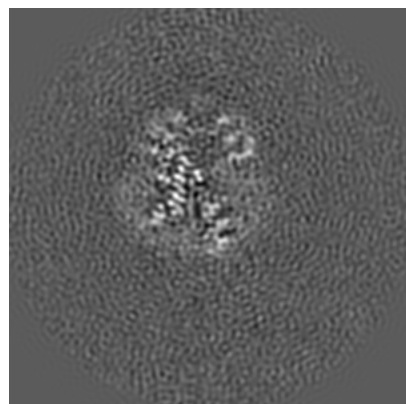


Z Index: 96

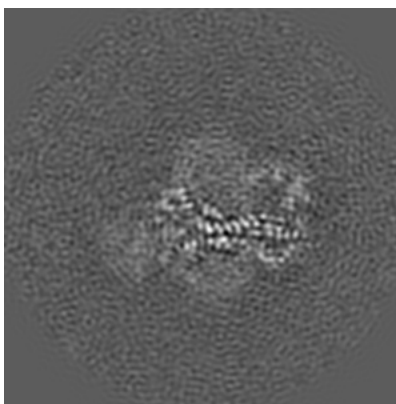
The images above show central slices of the map in three orthogonal directions.

6.3 Largest variance slices [i](#)

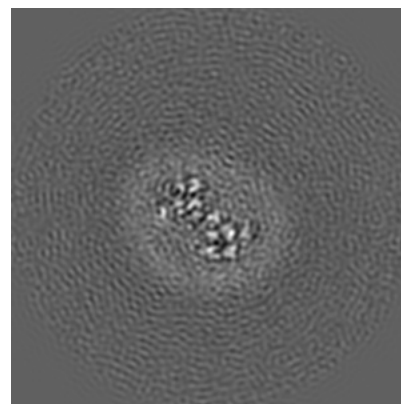
6.3.1 Primary map



X Index: 96



Y Index: 100

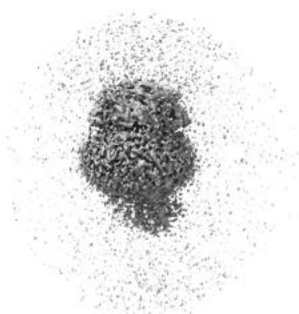


Z Index: 109

The images above show the largest variance slices of the map in three orthogonal directions.

6.4 Orthogonal surface views [i](#)

6.4.1 Primary map



X



Y



Z

The images above show the 3D surface view of the map at the recommended contour level 0.04. These images, in conjunction with the slice images, may facilitate assessment of whether an appropriate contour level has been provided.

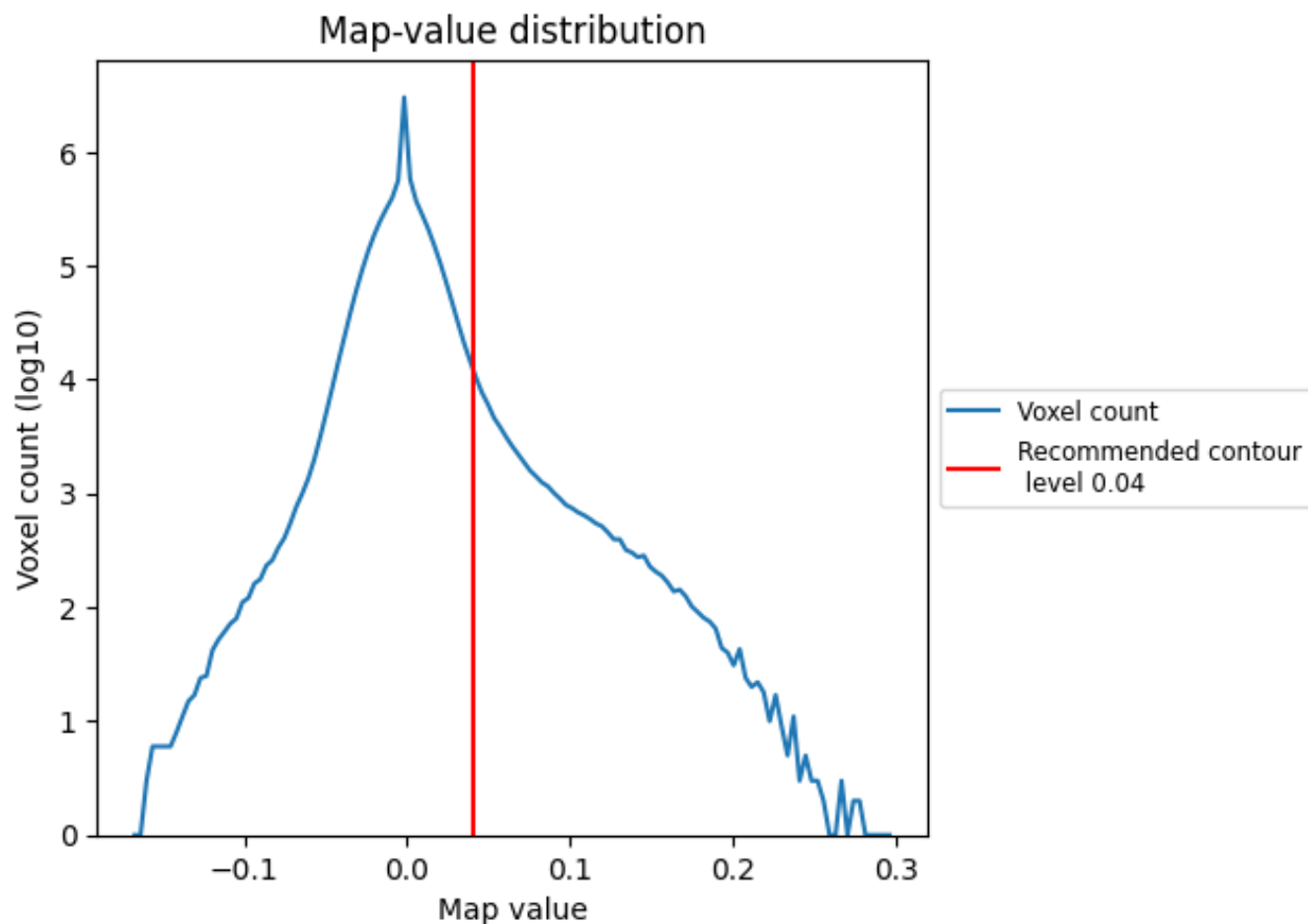
6.5 Mask visualisation

This section was not generated. No masks/segmentation were deposited.

7 Map analysis [i](#)

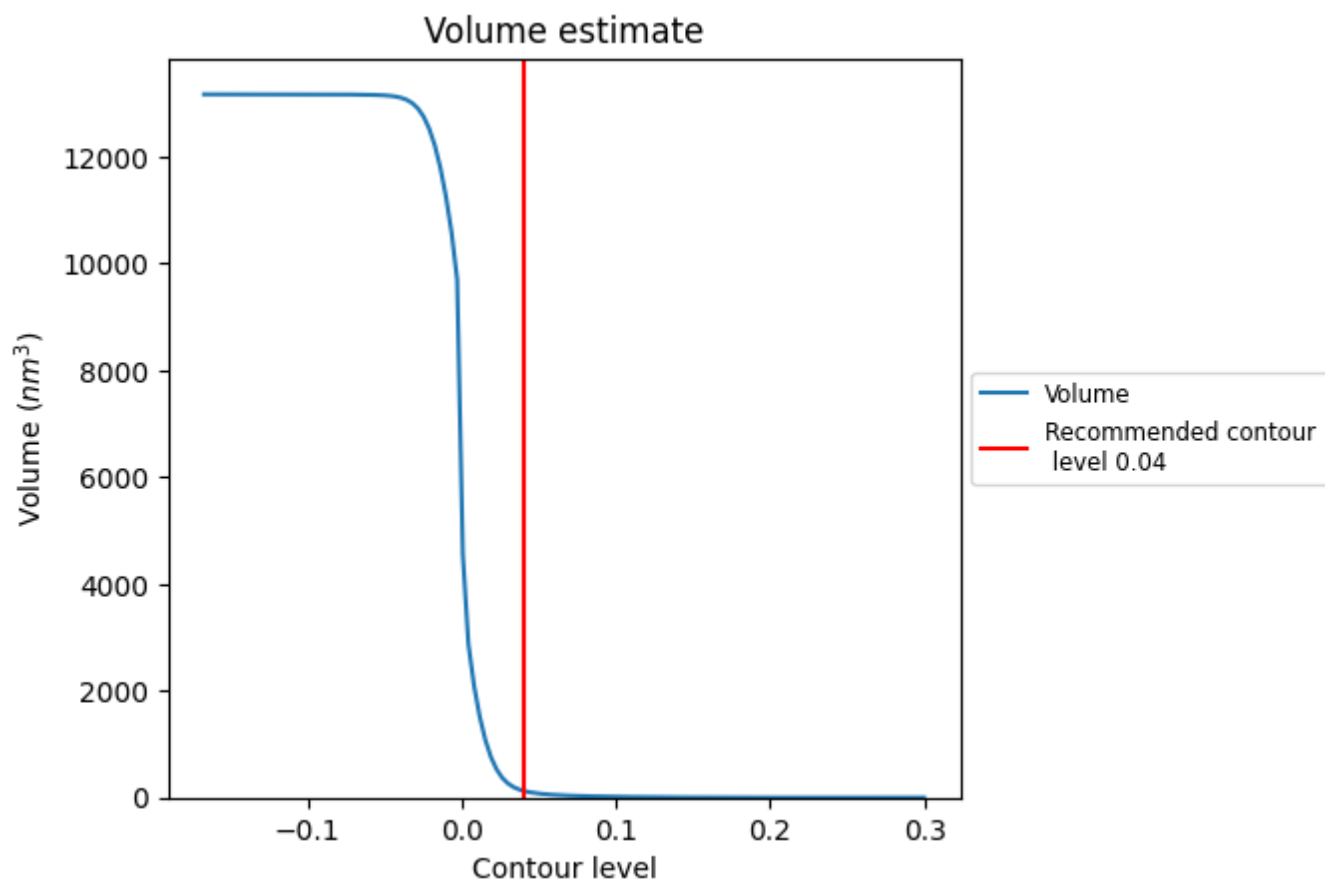
This section contains the results of statistical analysis of the map.

7.1 Map-value distribution [i](#)



The map-value distribution is plotted in 128 intervals along the x-axis. The y-axis is logarithmic. A spike in this graph at zero usually indicates that the volume has been masked.

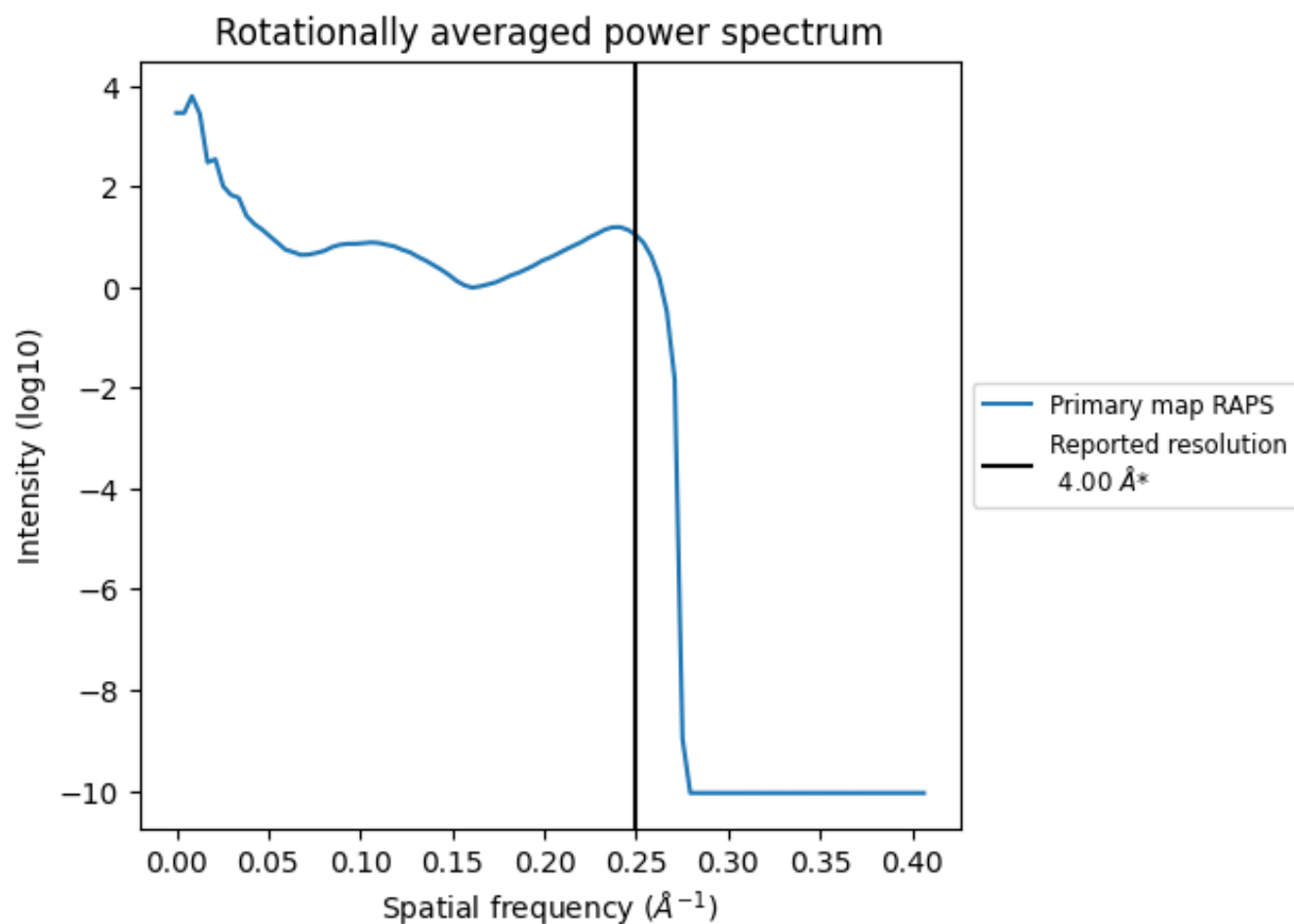
7.2 Volume estimate [i](#)



The volume at the recommended contour level is 126 nm³; this corresponds to an approximate mass of 114 kDa.

The volume estimate graph shows how the enclosed volume varies with the contour level. The recommended contour level is shown as a vertical line and the intersection between the line and the curve gives the volume of the enclosed surface at the given level.

7.3 Rotationally averaged power spectrum ⓘ

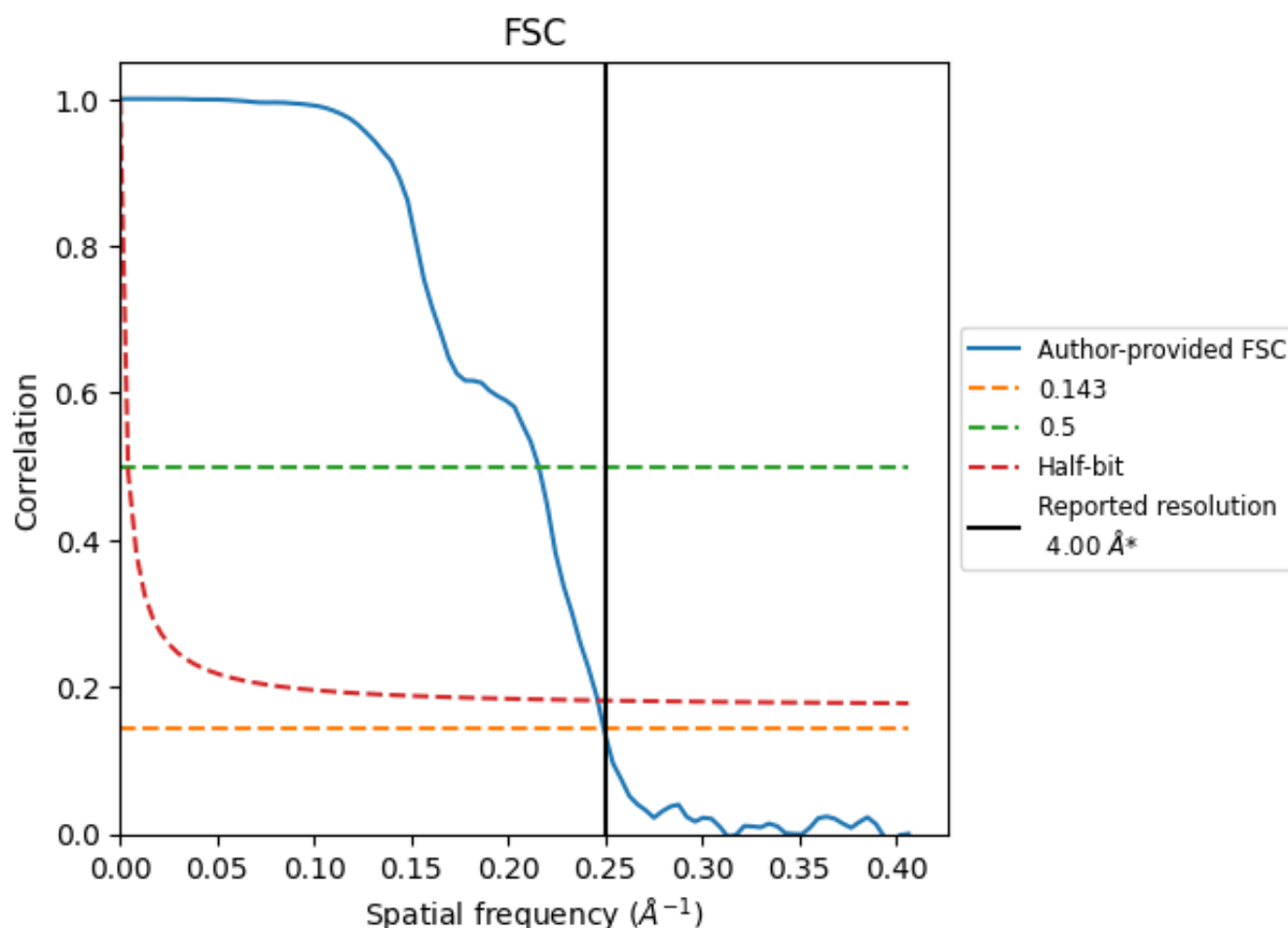


*Reported resolution corresponds to spatial frequency of 0.250 \AA^{-1}

8 Fourier-Shell correlation [i](#)

Fourier-Shell Correlation (FSC) is the most commonly used method to estimate the resolution of single-particle and subtomogram-averaged maps. The shape of the curve depends on the imposed symmetry, mask and whether or not the two 3D reconstructions used were processed from a common reference. The reported resolution is shown as a black line. A curve is displayed for the half-bit criterion in addition to lines showing the 0.143 gold standard cut-off and 0.5 cut-off.

8.1 FSC [i](#)



*Reported resolution corresponds to spatial frequency of 0.250 \AA^{-1}

8.2 Resolution estimates [i](#)

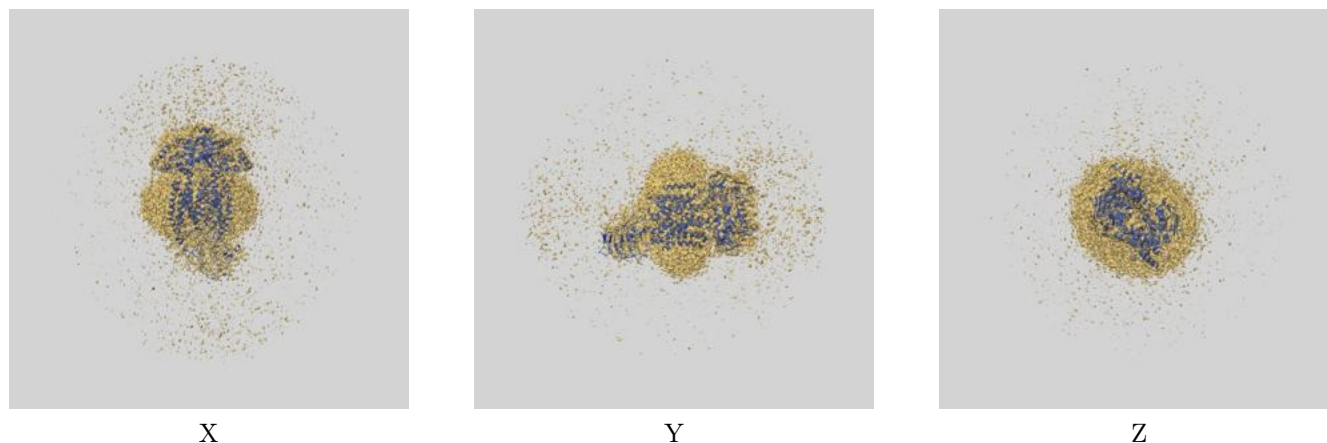
Resolution estimate (Å)	Estimation criterion (FSC cut-off)		
	0.143	0.5	Half-bit
Reported by author	4.00	-	-
Author-provided FSC curve	4.01	4.64	4.06
Unmasked-calculated*	-	-	-

*Resolution estimate based on FSC curve calculated by comparison of deposited half-maps.

9 Map-model fit [i](#)

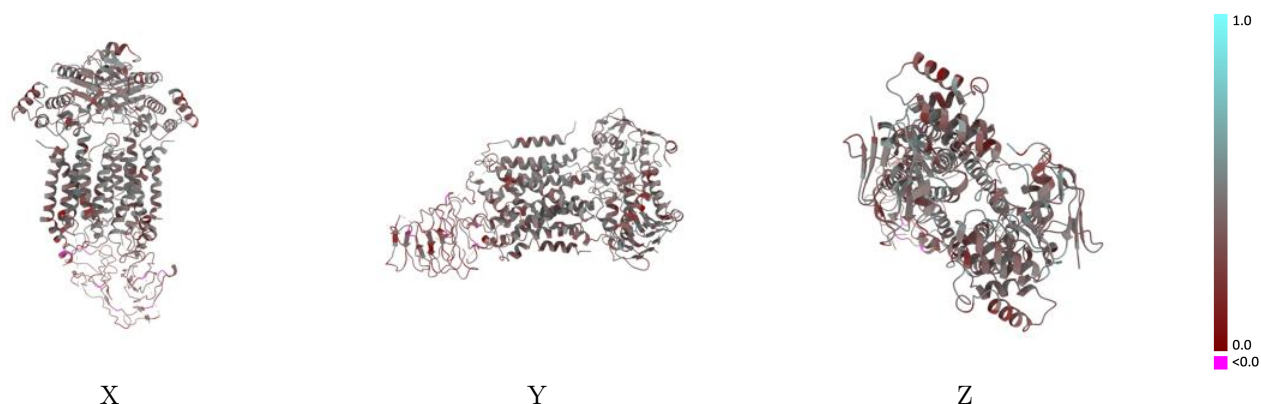
This section contains information regarding the fit between EMDB map EMD-9118 and PDB model 6MHU. Per-residue inclusion information can be found in section [3](#) on page [5](#).

9.1 Map-model overlay [i](#)



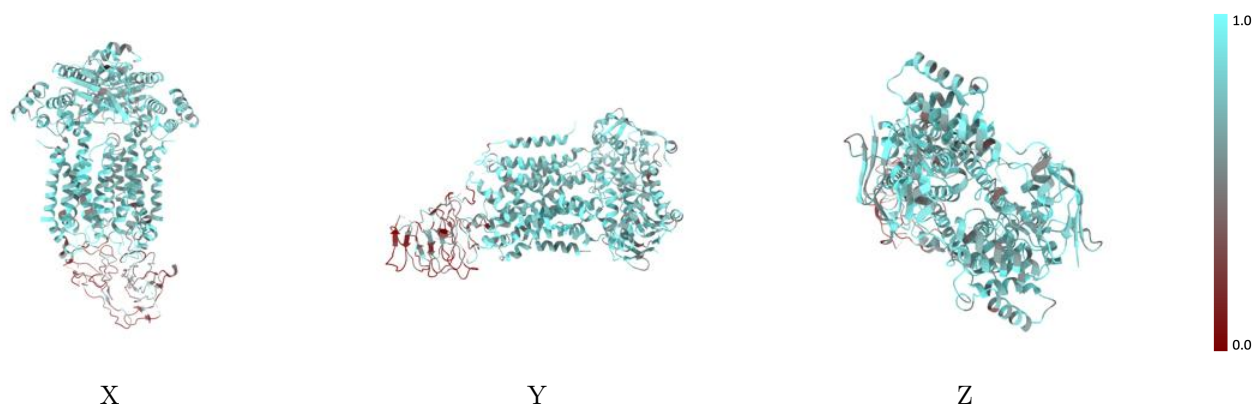
The images above show the 3D surface view of the map at the recommended contour level 0.04 at 50% transparency in yellow overlaid with a ribbon representation of the model coloured in blue. These images allow for the visual assessment of the quality of fit between the atomic model and the map.

9.2 Q-score mapped to coordinate model [i](#)



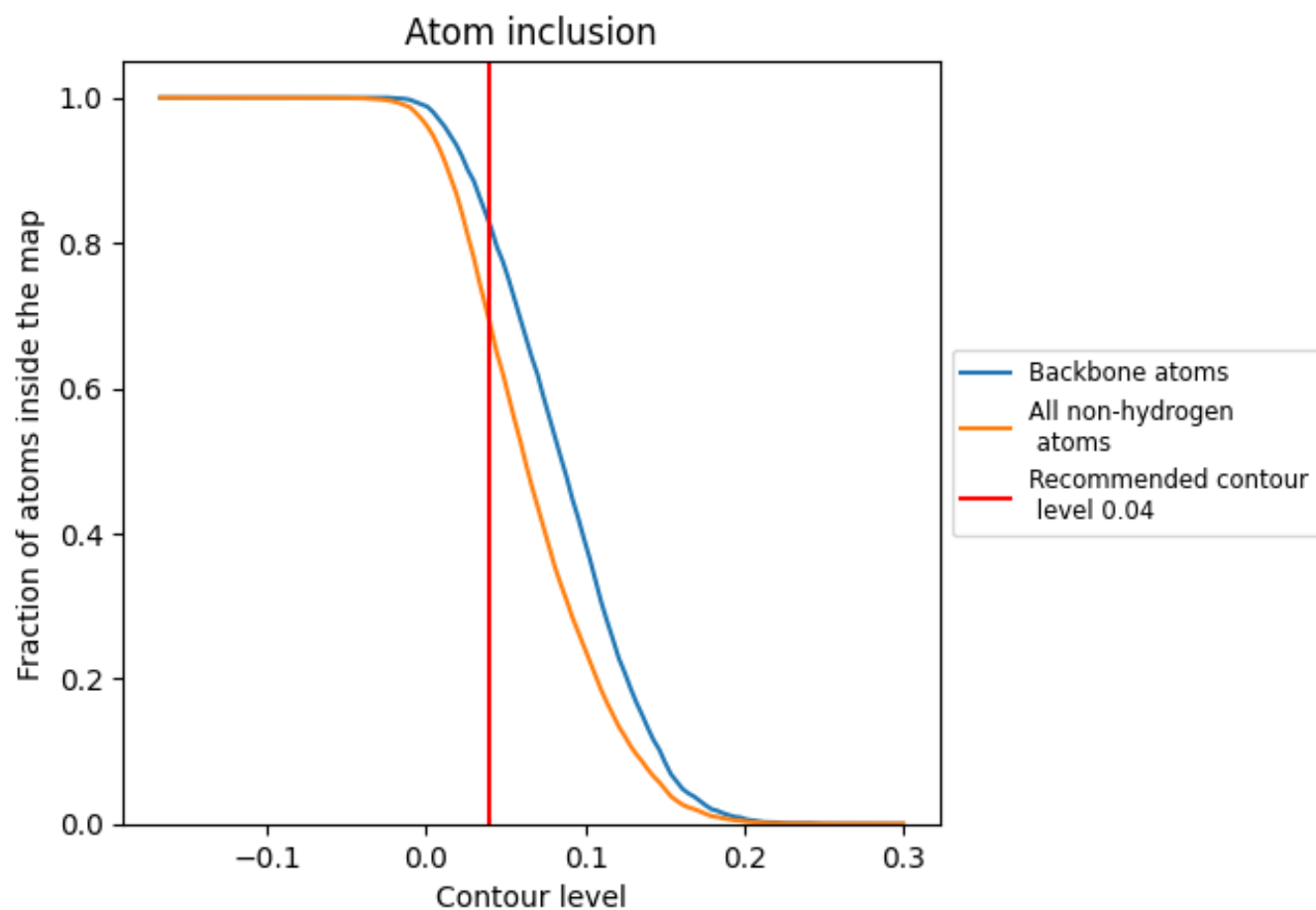
The images above show the model with each residue coloured according to its Q-score. This shows their resolvability in the map with higher Q-score values reflecting better resolvability. Please note: Q-score is calculating the resolvability of atoms, and thus high values are only expected at resolutions at which atoms can be resolved. Low Q-score values may therefore be expected for many entries.

9.3 Atom inclusion mapped to coordinate model [i](#)



The images above show the model with each residue coloured according to its atom inclusion. This shows to what extent they are inside the map at the recommended contour level (0.04).

9.4 Atom inclusion [i](#)



At the recommended contour level, 82% of all backbone atoms, 69% of all non-hydrogen atoms, are inside the map.

9.5 Map-model fit summary ⓘ

The table lists the average atom inclusion at the recommended contour level (0.04) and Q-score for the entire model and for each chain.

Chain	Atom inclusion	Q-score
All	<div></div> 0.6886	<div></div> 0.3820
A	<div></div> 0.7641	<div></div> 0.4020
B	<div></div> 0.7537	<div></div> 0.4060
F	<div></div> 0.6198	<div></div> 0.3650
G	<div></div> 0.6589	<div></div> 0.3690

