



# Full wwPDB X-ray Structure Validation Report ⓘ

May 25, 2020 – 03:31 pm BST

PDB ID : 8MHT  
Title : CYTOSINE-SPECIFIC METHYLTRANSFERASE HHAI/DNA COMPLEX  
Authors : O'Gara, M.; Horton, J.R.; Roberts, R.J.; Cheng, X.  
Deposited on : 1998-08-06  
Resolution : 2.76 Å(reported)

This is a Full wwPDB X-ray Structure Validation Report for a publicly released PDB entry.

We welcome your comments at [validation@mail.wwpdb.org](mailto:validation@mail.wwpdb.org)

A user guide is available at

<https://www.wwpdb.org/validation/2017/XrayValidationReportHelp>

with specific help available everywhere you see the ⓘ symbol.

---

The following versions of software and data (see [references ⓘ](#)) were used in the production of this report:

MolProbity : 4.02b-467  
Mogul : 1.8.5 (274361), CSD as541be (2020)  
Xtriage (Phenix) : **NOT EXECUTED**  
EDS : **NOT EXECUTED**  
buster-report : 1.1.7 (2018)  
Percentile statistics : 20191225.v01 (using entries in the PDB archive December 25th 2019)  
Ideal geometry (proteins) : Engh & Huber (2001)  
Ideal geometry (DNA, RNA) : Parkinson et al. (1996)  
Validation Pipeline (wwPDB-VP) : 2.11

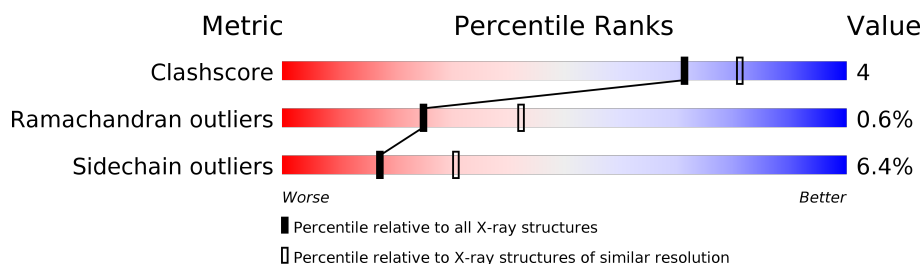
# 1 Overall quality at a glance

The following experimental techniques were used to determine the structure:

*X-RAY DIFFRACTION*

The reported resolution of this entry is 2.76 Å.

Percentile scores (ranging between 0-100) for global validation metrics of the entry are shown in the following graphic. The table shows the number of entries on which the scores are based.



Metric	Whole archive (#Entries)	Similar resolution (#Entries, resolution range(Å))
Clashscore	141614	1277 (2.78-2.74)
Ramachandran outliers	138981	1257 (2.78-2.74)
Sidechain outliers	138945	1257 (2.78-2.74)

The table below summarises the geometric issues observed across the polymeric chains and their fit to the electron density. The red, orange, yellow and green segments on the lower bar indicate the fraction of residues that contain outliers for  $\geq 3$ , 2, 1 and 0 types of geometric quality criteria respectively. A grey segment represents the fraction of residues that are not modelled. The numeric value for each fraction is indicated below the corresponding segment, with a dot representing fractions  $\leq 5\%$ .

Note EDS was not executed.

Mol	Chain	Length	Quality of chain
1	C	12	
2	D	12	
3	A	327	

## 2 Entry composition

There are 5 unique types of molecules in this entry. The entry contains 3239 atoms, of which 0 are hydrogens and 0 are deuteriums.

In the tables below, the ZeroOcc column contains the number of atoms modelled with zero occupancy, the AltConf column contains the number of residues with at least one atom in alternate conformation and the Trace column contains the number of residues modelled with at most 2 atoms.

- Molecule 1 is a DNA chain called 5'-D(P\*GP\*TP\*CP\*AP\*GP\*CP\*GP\*CP\*AP\*TP\*GP\*G)-3'.

Mol	Chain	Residues	Atoms					ZeroOcc	AltConf	Trace
1	C	12	Total	C	N	O	P	0	0	0
			249	117	48	72	12			

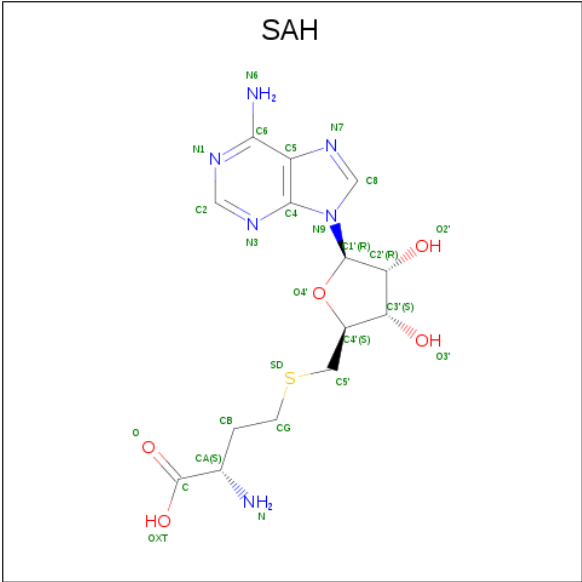
- Molecule 2 is a DNA chain called 5'-D(P\*CP\*CP\*AP\*TP\*GP\*UP\*GP\*CP\*TP\*GP\*AP\*C)-3'.

Mol	Chain	Residues	Atoms					ZeroOcc	AltConf	Trace
2	D	12	Total	C	N	O	P	0	0	0
			243	115	43	73	12			

- Molecule 3 is a protein called CYTOSINE-SPECIFIC METHYLTRANSFERASE HHAI.

Mol	Chain	Residues	Atoms					ZeroOcc	AltConf	Trace
3	A	327	Total	C	N	O	S	0	0	0
			2606	1662	444	487	13			

- Molecule 4 is S-ADENOSYL-L-HOMOCYSTEINE (three-letter code: SAH) (formula: C<sub>14</sub>H<sub>20</sub>N<sub>6</sub>O<sub>5</sub>S).



Mol	Chain	Residues	Atoms					ZeroOcc	AltConf
4	A	1	Total	C	N	O	S	0	0
			26	14	6	5	1		

- Molecule 5 is water.


Mol	Chain	Residues	Atoms		ZeroOcc	AltConf
5	C	8	Total	O	0	0
			8	8		
5	D	6	Total	O	0	0
			6	6		
5	A	101	Total	O	0	0
			101	101		

### 3 Residue-property plots [i](#)

These plots are drawn for all protein, RNA and DNA chains in the entry. The first graphic for a chain summarises the proportions of the various outlier classes displayed in the second graphic. The second graphic shows the sequence view annotated by issues in geometry. Residues are color-coded according to the number of geometric quality criteria for which they contain at least one outlier: green = 0, yellow = 1, orange = 2 and red = 3 or more. Stretches of 2 or more consecutive residues without any outlier are shown as a green connector. Residues present in the sample, but not in the model, are shown in grey.


Note EDS was not executed.

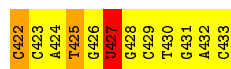
- Molecule 1: 5'-D(P\*GP\*TP\*CP\*AP\*GP\*CP\*GP\*CP\*AP\*TP\*GP\*G)-3'

Chain C: 



- Molecule 2: 5'-D(P\*CP\*CP\*AP\*TP\*GP\*UP\*GP\*CP\*TP\*GP\*AP\*C)-3'

Chain D: 



- Molecule 3: CYTOSINE-SPECIFIC METHYLTRANSFERASE HHAI

Chain A: 



## 4 Data and refinement statistics

Xtriage (Phenix) and EDS were not executed - this section is therefore incomplete.

Property	Value	Source
Space group	H 3 2	Depositor
Cell constants a, b, c, $\alpha$ , $\beta$ , $\gamma$	99.86 Å 99.86 Å 325.20 Å 90.00° 90.00° 120.00°	Depositor
Resolution (Å)	23.10 – 2.76	Depositor
% Data completeness (in resolution range)	85.0 (23.10-2.76)	Depositor
$R_{merge}$	0.10	Depositor
$R_{sym}$	(Not available)	Depositor
Refinement program	X-PLOR 3.1	Depositor
R, $R_{free}$	0.174 , (Not available)	Depositor
Estimated twinning fraction	No twinning to report.	Xtriage
Total number of atoms	3239	wwPDB-VP
Average B, all atoms (Å <sup>2</sup> )	15.0	wwPDB-VP

## 5 Model quality

### 5.1 Standard geometry

Bond lengths and bond angles in the following residue types are not validated in this section: SAH

The Z score for a bond length (or angle) is the number of standard deviations the observed value is removed from the expected value. A bond length (or angle) with  $|Z| > 5$  is considered an outlier worth inspection. RMSZ is the root-mean-square of all Z scores of the bond lengths (or angles).

Mol	Chain	Bond lengths		Bond angles	
		RMSZ	# Z  >5	RMSZ	# Z  >5
1	C	3.14	33/279 (11.8%)	4.21	78/429 (18.2%)
2	D	3.36	39/271 (14.4%)	4.50	79/415 (19.0%)
3	A	0.57	0/2661	0.76	0/3586
All	All	1.44	72/3211 (2.2%)	2.02	157/4430 (3.5%)

Chiral center outliers are detected by calculating the chiral volume of a chiral center and verifying if the center is modelled as a planar moiety or with the opposite hand. A planarity outlier is detected by checking planarity of atoms in a peptide group, atoms in a mainchain group or atoms of a sidechain that are expected to be planar.

Mol	Chain	#Chirality outliers	#Planarity outliers
2	D	0	3

All (72) bond length outliers are listed below:

Mol	Chain	Res	Type	Atoms	Z	Observed(Å)	Ideal(Å)
2	D	431	DG	N9-C8	10.53	1.45	1.37
1	C	406	DG	C2-N3	10.28	1.41	1.32
2	D	433	DC	P-O5'	9.47	1.69	1.59
1	C	412	DG	O3'-P	9.42	1.72	1.61
2	D	425	DT	C5-C7	-9.38	1.44	1.50
2	D	427	DU	C1'-N1	9.24	1.61	1.49
1	C	406	DG	N9-C4	8.39	1.44	1.38
2	D	426	DG	O4'-C1'	8.32	1.52	1.42
2	D	425	DT	C4'-O4'	-8.29	1.36	1.45
1	C	407	DC	C5'-C4'	8.20	1.60	1.51
2	D	427	DU	C4-C5	8.19	1.50	1.43
1	C	402	DG	N1-C2	8.04	1.44	1.37
1	C	403	DT	C5-C7	8.03	1.54	1.50
2	D	429	DC	C5'-C4'	8.02	1.60	1.51
2	D	422	DC	C5'-C4'	7.85	1.59	1.51

*Continued on next page...*

*Continued from previous page...*

Mol	Chain	Res	Type	Atoms	Z	Observed(Å)	Ideal(Å)
1	C	406	DG	N7-C5	7.74	1.43	1.39
2	D	426	DG	C3'-C2'	7.39	1.61	1.52
2	D	431	DG	C8-N7	7.34	1.35	1.30
2	D	427	DU	C2-N3	7.32	1.42	1.37
1	C	408	DG	N7-C5	7.28	1.43	1.39
1	C	408	DG	C5-C6	7.14	1.49	1.42
1	C	413	DG	C6-N1	6.93	1.44	1.39
1	C	412	DG	P-O5'	6.83	1.66	1.59
1	C	409	DC	C4-C5	-6.82	1.37	1.43
2	D	427	DU	P-O5'	6.70	1.66	1.59
2	D	431	DG	N7-C5	6.70	1.43	1.39
2	D	422	DC	O3'-P	6.61	1.69	1.61
2	D	430	DT	C4'-C3'	6.60	1.59	1.53
2	D	428	DG	C8-N7	6.56	1.34	1.30
1	C	402	DG	O3'-P	6.50	1.69	1.61
2	D	430	DT	N1-C2	6.49	1.43	1.38
2	D	427	DU	C4'-O4'	-6.45	1.38	1.45
2	D	427	DU	N1-C2	6.39	1.44	1.38
1	C	404	DC	C2-N3	6.35	1.40	1.35
2	D	426	DG	C2-N3	6.29	1.37	1.32
1	C	412	DG	C8-N7	6.21	1.34	1.30
1	C	413	DG	N3-C4	6.20	1.39	1.35
2	D	423	DC	N3-C4	6.09	1.38	1.33
1	C	403	DT	N1-C2	-5.92	1.33	1.38
1	C	407	DC	N3-C4	5.87	1.38	1.33
2	D	430	DT	C3'-C2'	5.83	1.59	1.52
2	D	433	DC	N3-C4	5.83	1.38	1.33
2	D	428	DG	O3'-P	5.79	1.68	1.61
2	D	427	DU	N3-C4	5.75	1.43	1.38
1	C	412	DG	N9-C4	5.62	1.42	1.38
1	C	403	DT	N1-C6	5.59	1.42	1.38
2	D	431	DG	C5'-C4'	5.58	1.57	1.51
2	D	432	DA	C4'-C3'	5.49	1.58	1.53
2	D	428	DG	C2-N3	5.48	1.37	1.32
2	D	426	DG	N7-C5	-5.45	1.35	1.39
1	C	402	DG	N7-C5	5.44	1.42	1.39
2	D	428	DG	N3-C4	5.41	1.39	1.35
1	C	404	DC	O3'-P	5.40	1.67	1.61
1	C	402	DG	C6-N1	5.39	1.43	1.39
1	C	411	DT	C4-C5	5.35	1.49	1.45
1	C	408	DG	C5'-C4'	5.30	1.57	1.51
1	C	413	DG	C4'-C3'	-5.22	1.47	1.52

*Continued on next page...*



*Continued from previous page...*

Mol	Chain	Res	Type	Atoms	Z	Observed(Å)	Ideal(Å)
2	D	426	DG	C5'-C4'	5.22	1.57	1.51
2	D	425	DT	P-O5'	5.20	1.65	1.59
1	C	403	DT	C3'-C2'	5.20	1.58	1.52
1	C	413	DG	C4'-O4'	-5.18	1.39	1.45
2	D	422	DC	P-O5'	5.18	1.65	1.59
2	D	427	DU	C5-C6	5.17	1.38	1.34
2	D	433	DC	C3'-O3'	5.12	1.50	1.44
1	C	408	DG	C2'-C1'	5.12	1.57	1.52
1	C	413	DG	C3'-C2'	5.11	1.58	1.52
1	C	407	DC	C2-N3	5.11	1.39	1.35
2	D	429	DC	C2'-C1'	5.08	1.57	1.52
1	C	403	DT	C3'-O3'	5.05	1.50	1.44
2	D	426	DG	C5-C4	-5.03	1.34	1.38
1	C	402	DG	C4'-C3'	-5.02	1.47	1.52
2	D	431	DG	C1'-N9	5.01	1.55	1.49

All (157) bond angle outliers are listed below:

Mol	Chain	Res	Type	Atoms	Z	Observed(°)	Ideal(°)
2	D	427	DU	O4'-C4'-C3'	-35.45	84.73	106.00
2	D	427	DU	O4'-C1'-C2'	-20.60	89.42	105.90
2	D	433	DC	O4'-C1'-N1	17.77	120.44	108.00
2	D	422	DC	O4'-C4'-C3'	-16.98	95.81	106.00
1	C	407	DC	O4'-C1'-C2'	-16.82	92.44	105.90
1	C	413	DG	O4'-C4'-C3'	-14.66	97.20	106.00
1	C	412	DG	O4'-C1'-N9	14.34	118.04	108.00
2	D	431	DG	O4'-C1'-N9	13.54	117.48	108.00
1	C	403	DT	C4-C5-C7	-13.20	111.08	119.00
1	C	411	DT	P-O3'-C3'	13.15	135.48	119.70
1	C	407	DC	O4'-C4'-C3'	-12.79	98.33	106.00
1	C	413	DG	N1-C6-O6	12.47	127.38	119.90
1	C	411	DT	C6-C5-C7	-12.26	115.55	122.90
1	C	413	DG	C1'-O4'-C4'	-12.15	97.95	110.10
1	C	413	DG	C5-C6-O6	-11.98	121.41	128.60
1	C	406	DG	C5-C6-N1	11.85	117.43	111.50
2	D	425	DT	C6-C5-C7	-11.79	115.83	122.90
2	D	426	DG	N9-C4-C5	11.74	110.10	105.40
1	C	409	DC	P-O3'-C3'	11.29	133.25	119.70
1	C	406	DG	C4'-C3'-C2'	-11.28	92.95	103.10
1	C	411	DT	N1-C2-N3	11.17	121.30	114.60
1	C	406	DG	N3-C2-N2	10.98	127.59	119.90
2	D	433	DC	O4'-C1'-C2'	-10.95	97.14	105.90

*Continued on next page...*

*Continued from previous page...*

Mol	Chain	Res	Type	Atoms	Z	Observed(°)	Ideal(°)
1	C	405	DA	P-O3'-C3'	10.70	132.53	119.70
2	D	422	DC	N3-C4-N4	10.55	125.38	118.00
2	D	427	DU	N1-C2-N3	10.54	121.22	114.90
2	D	431	DG	C8-N9-C4	-10.47	102.21	106.40
1	C	404	DC	O4'-C1'-C2'	-10.40	97.58	105.90
2	D	425	DT	C1'-O4'-C4'	-10.34	99.76	110.10
1	C	411	DT	C4-C5-C6	10.27	124.16	118.00
2	D	428	DG	N1-C6-O6	-10.16	113.80	119.90
2	D	425	DT	O4'-C4'-C3'	-10.14	99.92	106.00
2	D	427	DU	N3-C2-O2	-10.05	115.17	122.20
2	D	422	DC	N3-C4-C5	-9.98	117.91	121.90
2	D	427	DU	C6-N1-C2	-9.88	115.07	121.00
2	D	428	DG	P-O3'-C3'	9.82	131.48	119.70
1	C	405	DA	C4'-C3'-C2'	-9.51	94.54	103.10
2	D	426	DG	O4'-C1'-N9	9.51	114.65	108.00
2	D	423	DC	C6-N1-C2	9.47	124.09	120.30
1	C	403	DT	C6-C5-C7	9.46	128.58	122.90
1	C	402	DG	N3-C2-N2	-9.21	113.45	119.90
2	D	427	DU	N3-C4-C5	-9.09	109.15	114.60
2	D	426	DG	C2-N3-C4	9.08	116.44	111.90
1	C	404	DC	N3-C4-N4	9.05	124.34	118.00
1	C	406	DG	N3-C4-N9	9.01	131.41	126.00
2	D	431	DG	C5-N7-C8	-9.01	99.79	104.30
1	C	402	DG	N1-C2-N2	8.85	124.17	116.20
1	C	403	DT	C1'-O4'-C4'	8.83	118.93	110.10
1	C	402	DG	O4'-C4'-C3'	-8.83	100.70	106.00
2	D	426	DG	C8-N9-C4	-8.81	102.87	106.40
1	C	406	DG	O4'-C4'-C3'	8.78	111.27	106.00
1	C	405	DA	O4'-C4'-C3'	8.66	111.19	106.00
2	D	425	DT	C4'-C3'-C2'	-8.62	95.35	103.10
1	C	403	DT	N1-C2-N3	8.52	119.71	114.60
1	C	409	DC	O4'-C1'-C2'	-8.47	99.13	105.90
2	D	426	DG	N3-C4-C5	-8.46	124.37	128.60
2	D	425	DT	N3-C2-O2	-8.41	117.25	122.30
2	D	430	DT	O4'-C1'-N1	8.36	113.85	108.00
1	C	411	DT	O4'-C1'-C2'	-8.35	99.22	105.90
2	D	431	DG	C5-C6-O6	-8.18	123.69	128.60
1	C	405	DA	O4'-C1'-C2'	-8.13	99.39	105.90
1	C	406	DG	N3-C4-C5	-8.06	124.57	128.60
2	D	423	DC	N1-C2-N3	-8.03	113.58	119.20
2	D	423	DC	C1'-O4'-C4'	-8.02	102.08	110.10
2	D	428	DG	C5-C6-O6	8.02	133.41	128.60

*Continued on next page...*

*Continued from previous page...*

Mol	Chain	Res	Type	Atoms	Z	Observed(°)	Ideal(°)
1	C	409	DC	N1-C2-O2	7.99	123.69	118.90
2	D	427	DU	C4-C5-C6	7.96	124.48	119.70
2	D	428	DG	C8-N9-C4	-7.93	103.23	106.40
2	D	431	DG	O4'-C1'-C2'	-7.90	99.58	105.90
1	C	406	DG	N1-C6-O6	-7.87	115.18	119.90
1	C	406	DG	N1-C2-N2	-7.86	109.13	116.20
1	C	403	DT	N3-C2-O2	-7.81	117.62	122.30
2	D	424	DA	N1-C6-N6	7.67	123.20	118.60
1	C	406	DG	O5'-P-OP2	-7.66	98.81	105.70
1	C	413	DG	C6-C5-N7	-7.65	125.81	130.40
2	D	431	DG	N7-C8-N9	7.50	116.85	113.10
1	C	403	DT	C6-N1-C2	-7.49	117.55	121.30
2	D	429	DC	N3-C2-O2	-7.48	116.66	121.90
2	D	423	DC	O4'-C4'-C3'	7.42	110.45	106.00
2	D	431	DG	P-O3'-C3'	7.40	128.59	119.70
1	C	406	DG	O4'-C1'-N9	7.34	113.14	108.00
2	D	424	DA	C5-C6-N6	-7.27	117.88	123.70
1	C	411	DT	N3-C4-C5	-7.24	110.85	115.20
2	D	422	DC	P-O3'-C3'	-7.14	111.13	119.70
1	C	411	DT	O4'-C1'-N1	7.13	112.99	108.00
2	D	425	DT	C5-C4-O4	7.05	129.83	124.90
1	C	412	DG	O4'-C1'-C2'	-7.05	100.26	105.90
2	D	433	DC	N3-C4-N4	7.02	122.92	118.00
2	D	423	DC	C2-N3-C4	6.96	123.38	119.90
1	C	410	DA	O4'-C4'-C3'	6.95	110.17	106.00
1	C	411	DT	N1-C2-O2	-6.94	117.55	123.10
1	C	405	DA	OP2-P-O3'	6.85	120.28	105.20
1	C	403	DT	C6-N1-C1'	6.69	130.43	120.40
1	C	404	DC	C5-C4-N4	-6.61	115.58	120.20
1	C	404	DC	O4'-C4'-C3'	-6.54	101.88	104.50
2	D	429	DC	N1-C2-N3	6.54	123.78	119.20
2	D	426	DG	C5-C6-N1	6.52	114.76	111.50
2	D	428	DG	N7-C8-N9	6.52	116.36	113.10
1	C	403	DT	O4'-C1'-C2'	-6.51	100.69	105.90
1	C	403	DT	O3'-P-O5'	6.51	116.36	104.00
2	D	424	DA	O4'-C1'-N9	-6.46	103.48	108.00
1	C	406	DG	C6-N1-C2	-6.43	121.24	125.10
1	C	409	DC	C1'-O4'-C4'	-6.36	103.74	110.10
1	C	406	DG	C2-N3-C4	6.36	115.08	111.90
1	C	405	DA	P-O5'-C5'	-6.31	110.81	120.90
1	C	405	DA	O3'-P-O5'	-6.29	92.04	104.00
2	D	423	DC	N1-C2-O2	6.28	122.67	118.90

*Continued on next page...*

*Continued from previous page...*

Mol	Chain	Res	Type	Atoms	Z	Observed(°)	Ideal(°)
1	C	409	DC	C4'-C3'-C2'	-6.20	97.52	103.10
1	C	413	DG	C4-C5-N7	6.20	113.28	110.80
2	D	431	DG	N9-C4-C5	6.18	107.87	105.40
2	D	431	DG	C4-C5-N7	6.17	113.27	110.80
2	D	431	DG	N1-C6-O6	6.14	123.59	119.90
2	D	425	DT	N3-C4-O4	-6.13	116.22	119.90
2	D	431	DG	C6-C5-N7	-6.11	126.73	130.40
2	D	426	DG	P-O3'-C3'	6.08	127.00	119.70
2	D	424	DA	C5-N7-C8	-6.07	100.87	103.90
1	C	407	DC	C1'-O4'-C4'	-6.06	104.04	110.10
2	D	429	DC	C2-N3-C4	-6.02	116.89	119.90
2	D	425	DT	C4-C5-C6	5.95	121.57	118.00
1	C	402	DG	N9-C4-C5	5.92	107.77	105.40
2	D	433	DC	C5-C4-N4	-5.90	116.07	120.20
2	D	425	DT	C4-C5-C7	5.78	122.47	119.00
2	D	425	DT	C5'-C4'-O4'	-5.77	98.33	109.30
1	C	409	DC	P-O5'-C5'	5.76	130.12	120.90
1	C	404	DC	O4'-C1'-N1	-5.71	104.01	108.00
2	D	426	DG	P-O5'-C5'	-5.69	111.80	120.90
1	C	402	DG	N3-C4-N9	-5.69	122.59	126.00
2	D	427	DU	O4'-C1'-N1	5.68	111.98	108.00
1	C	411	DT	C5-C6-N1	-5.67	120.30	123.70
2	D	426	DG	O3'-P-O5'	5.63	114.70	104.00
1	C	409	DC	C2-N3-C4	5.60	122.70	119.90
2	D	429	DC	C6-N1-C2	-5.59	118.06	120.30
2	D	433	DC	C5-C6-N1	5.58	123.79	121.00
2	D	428	DG	O3'-P-O5'	-5.54	93.47	104.00
1	C	404	DC	N1-C1'-C2'	5.51	123.08	112.60
1	C	407	DC	O3'-P-O5'	-5.43	93.68	104.00
1	C	407	DC	C5-C4-N4	-5.36	116.45	120.20
1	C	411	DT	C2-N3-C4	-5.32	124.01	127.20
2	D	423	DC	C5'-C4'-C3'	-5.32	104.52	114.10
2	D	429	DC	O4'-C1'-C2'	-5.32	101.64	105.90
1	C	412	DG	C4'-C3'-C2'	-5.29	98.34	103.10
2	D	428	DG	N9-C4-C5	5.29	107.51	105.40
2	D	426	DG	N1-C6-O6	-5.25	116.75	119.90
2	D	433	DC	N1-C1'-C2'	-5.25	102.62	112.60
2	D	428	DG	N3-C4-C5	-5.25	125.98	128.60
2	D	429	DC	O3'-P-O5'	-5.21	94.10	104.00
1	C	413	DG	O5'-P-OP2	-5.20	101.02	105.70
2	D	425	DT	O4'-C1'-N1	-5.17	104.38	108.00
2	D	423	DC	O4'-C1'-N1	5.13	111.59	108.00

*Continued on next page...*

*Continued from previous page...*

Mol	Chain	Res	Type	Atoms	Z	Observed(°)	Ideal(°)
1	C	402	DG	N1-C6-O6	5.12	122.97	119.90
1	C	408	DG	N7-C8-N9	5.11	115.66	113.10
2	D	430	DT	O3'-P-O5'	-5.08	94.34	104.00
1	C	409	DC	C5-C6-N1	5.04	123.52	121.00
2	D	422	DC	C5-C4-N4	-5.02	116.69	120.20
1	C	413	DG	O4'-C1'-N9	-5.01	104.49	108.00
1	C	406	DG	O4'-C1'-C2'	-5.01	101.89	105.90
1	C	410	DA	C5-C6-N1	5.00	120.20	117.70

There are no chirality outliers.

All (3) planarity outliers are listed below:

Mol	Chain	Res	Type	Group
2	D	422	DC	Sidechain
2	D	425	DT	Sidechain
2	D	427	DU	Sidechain

## 5.2 Too-close contacts ⓘ

In the following table, the Non-H and H(model) columns list the number of non-hydrogen atoms and hydrogen atoms in the chain respectively. The H(added) column lists the number of hydrogen atoms added and optimized by MolProbity. The Clashes column lists the number of clashes within the asymmetric unit, whereas Symm-Clashes lists symmetry related clashes.

Mol	Chain	Non-H	H(model)	H(added)	Clashes	Symm-Clashes
1	C	249	0	135	2	0
2	D	243	0	134	2	0
3	A	2606	0	2587	18	0
4	A	26	0	19	0	0
5	A	101	0	0	3	0
5	C	8	0	0	1	0
5	D	6	0	0	0	0
All	All	3239	0	2875	19	0

The all-atom clashscore is defined as the number of clashes found per 1000 atoms (including hydrogen atoms). The all-atom clashscore for this structure is 4.

All (19) close contacts within the same asymmetric unit are listed below, sorted by their clash magnitude.

Atom-1	Atom-2	Interatomic distance (Å)	Clash overlap (Å)
2:D:427:DU:C6	3:A:81:CYS:SG	2.62	0.87
3:A:95:ASP:OD1	3:A:97:ARG:HD3	2.06	0.55
3:A:162:LYS:HG2	3:A:162:LYS:O	2.07	0.53
3:A:125:ALA:HB2	3:A:166:ILE:HD12	1.91	0.52
2:D:427:DU:H6	3:A:81:CYS:SG	2.51	0.50
3:A:189:ASN:HB2	5:A:430:HOH:O	2.13	0.47
3:A:156:ASP:HB3	3:A:185:PRO:HB3	1.98	0.46
3:A:69:ILE:HA	3:A:70:PRO:HD3	1.78	0.46
3:A:42:ASP:O	3:A:46:GLN:HG3	2.16	0.46
3:A:189:ASN:N	5:A:398:HOH:O	2.50	0.45
3:A:189:ASN:CB	5:A:430:HOH:O	2.66	0.43
3:A:25:ARG:HD2	3:A:53:PHE:CE1	2.54	0.42
1:C:402:DG:P	5:C:418:HOH:O	2.77	0.42
1:C:406:DG:O6	3:A:256:GLY:HA3	2.20	0.42
3:A:253:ALA:O	3:A:261:LYS:HE3	2.20	0.42
3:A:204:HIS:CD2	3:A:204:HIS:H	2.38	0.41
3:A:184:LYS:HA	3:A:185:PRO:HD3	1.84	0.41
3:A:275:HIS:CD2	3:A:276:PRO:HD2	2.55	0.41
3:A:45:ALA:O	3:A:48:VAL:HG23	2.19	0.41

There are no symmetry-related clashes.

## 5.3 Torsion angles [i](#)

### 5.3.1 Protein backbone [i](#)

In the following table, the Percentiles column shows the percent Ramachandran outliers of the chain as a percentile score with respect to all X-ray entries followed by that with respect to entries of similar resolution.

The Analysed column shows the number of residues for which the backbone conformation was analysed, and the total number of residues.

Mol	Chain	Analysed	Favoured	Allowed	Outliers	Percentiles	
3	A	325/327 (99%)	305 (94%)	18 (6%)	2 (1%)	25	42

All (2) Ramachandran outliers are listed below:

Mol	Chain	Res	Type
3	A	60	ASP
3	A	261	LYS

### 5.3.2 Protein sidechains ⓘ

In the following table, the Percentiles column shows the percent sidechain outliers of the chain as a percentile score with respect to all X-ray entries followed by that with respect to entries of similar resolution.

The Analysed column shows the number of residues for which the sidechain conformation was analysed, and the total number of residues.

Mol	Chain	Analysed	Rotameric	Outliers	Percentiles	
3	A	283 / 283 (100%)	265 (94%)	18 (6%)	17	31

All (18) residues with a non-rotameric sidechain are listed below:

Mol	Chain	Res	Type
3	A	2	ILE
3	A	28	LEU
3	A	41	TRP
3	A	48	VAL
3	A	86	ILE
3	A	87	SER
3	A	126	SER
3	A	132	THR
3	A	217	GLN
3	A	220	GLU
3	A	231	ILE
3	A	243	SER
3	A	245	ARG
3	A	266	LEU
3	A	270	LYS
3	A	277	ARG
3	A	306	VAL
3	A	311	LEU

Some sidechains can be flipped to improve hydrogen bonding and reduce clashes. All (6) such sidechains are listed below:

Mol	Chain	Res	Type
3	A	63	GLN
3	A	65	ASN
3	A	129	ASN
3	A	141	ASN
3	A	204	HIS
3	A	301	GLN

### 5.3.3 RNA ⓘ

There are no RNA molecules in this entry.

## 5.4 Non-standard residues in protein, DNA, RNA chains ⓘ

There are no non-standard protein/DNA/RNA residues in this entry.

## 5.5 Carbohydrates ⓘ

There are no carbohydrates in this entry.

## 5.6 Ligand geometry ⓘ

1 ligand is modelled in this entry.

In the following table, the Counts columns list the number of bonds (or angles) for which Mogul statistics could be retrieved, the number of bonds (or angles) that are observed in the model and the number of bonds (or angles) that are defined in the Chemical Component Dictionary. The Link column lists molecule types, if any, to which the group is linked. The Z score for a bond length (or angle) is the number of standard deviations the observed value is removed from the expected value. A bond length (or angle) with  $|Z| > 2$  is considered an outlier worth inspection. RMSZ is the root-mean-square of all Z scores of the bond lengths (or angles).

Mol	Type	Chain	Res	Link	Bond lengths			Bond angles		
					Counts	RMSZ	# $ Z  > 2$	Counts	RMSZ	# $ Z  > 2$
4	SAH	A	328	-	21,28,28	1.28	4 (19%)	20,40,40	2.21	8 (40%)

In the following table, the Chirals column lists the number of chiral outliers, the number of chiral centers analysed, the number of these observed in the model and the number defined in the Chemical Component Dictionary. Similar counts are reported in the Torsion and Rings columns. '-' means no outliers of that kind were identified.

Mol	Type	Chain	Res	Link	Chirals	Torsions	Rings
4	SAH	A	328	-	-	1/7/31/31	0/3/3/3

All (4) bond length outliers are listed below:

Mol	Chain	Res	Type	Atoms	Z	Observed(Å)	Ideal(Å)
4	A	328	SAH	C2'-C1'	-2.53	1.49	1.53
4	A	328	SAH	C3'-C4'	2.45	1.59	1.53
4	A	328	SAH	C2-N3	2.25	1.35	1.32
4	A	328	SAH	C5'-C4'	2.02	1.60	1.52



All (8) bond angle outliers are listed below:

Mol	Chain	Res	Type	Atoms	Z	Observed(°)	Ideal(°)
4	A	328	SAH	O4'-C1'-C2'	-4.64	100.15	106.93
4	A	328	SAH	CB-CG-SD	3.81	121.85	113.31
4	A	328	SAH	C4-C5-N7	3.42	112.96	109.40
4	A	328	SAH	C4'-C5'-SD	3.32	125.71	113.78
4	A	328	SAH	C5-C6-N6	-2.73	116.20	120.35
4	A	328	SAH	C2-N1-C6	-2.54	114.40	118.75
4	A	328	SAH	N3-C2-N1	2.40	132.43	128.68
4	A	328	SAH	N6-C6-N1	2.33	123.40	118.57

There are no chirality outliers.

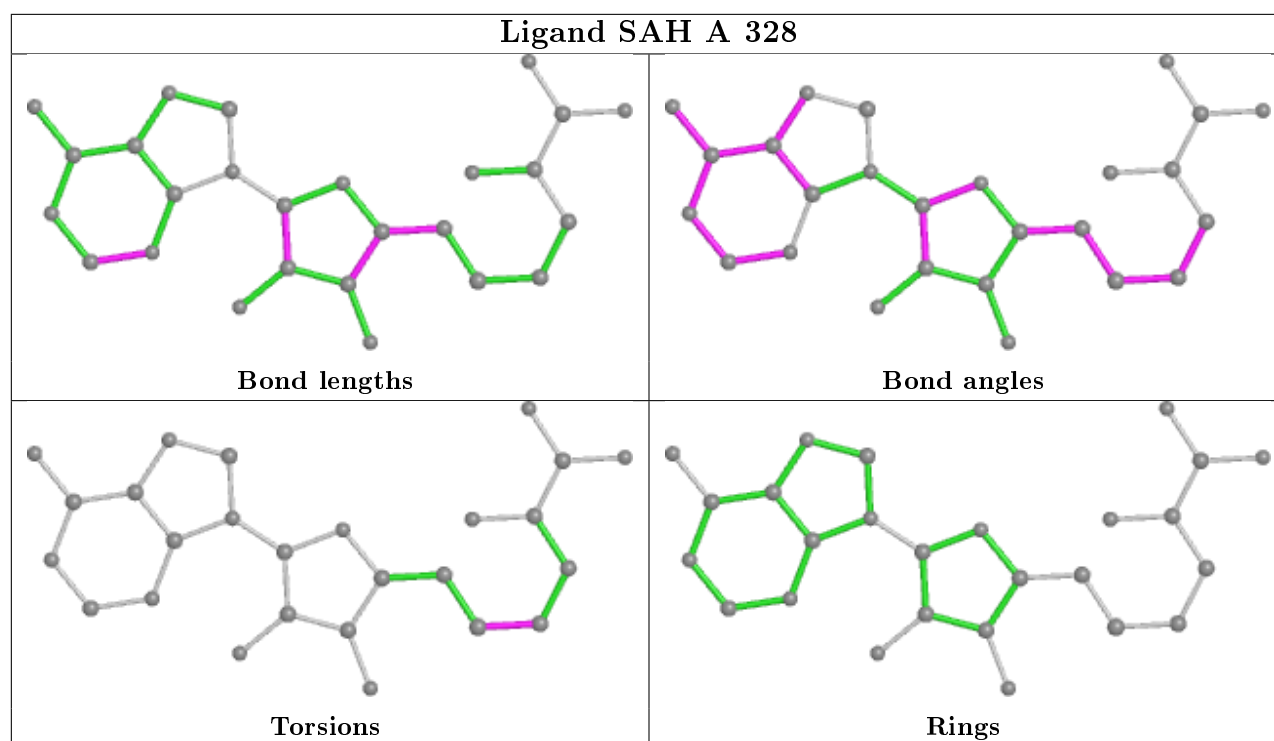
All (1) torsion outliers are listed below:

Mol	Chain	Res	Type	Atoms
4	A	328	SAH	CB-CG-SD-C5'

There are no ring outliers.

No monomer is involved in short contacts.

The following is a two-dimensional graphical depiction of Mogul quality analysis of bond lengths, bond angles, torsion angles, and ring geometry for all instances of the Ligand of Interest. In addition, ligands with molecular weight > 250 and outliers as shown on the validation Tables will also be included. For torsion angles, if less than 5% of the Mogul distribution of torsion angles is within 10 degrees of the torsion angle in question, then that torsion angle is considered an outlier. Any bond that is central to one or more torsion angles identified as an outlier by Mogul will be highlighted in the graph. For rings, the root-mean-square deviation (RMSD) between the ring in question and similar rings identified by Mogul is calculated over all ring torsion angles. If the average RMSD is greater than 60 degrees and the minimal RMSD between the ring in question and any Mogul-identified rings is also greater than 60 degrees, then that ring is considered an outlier. The outliers are highlighted in purple. The color gray indicates Mogul did not find sufficient equivalents in the CSD to analyse the geometry.



## 5.7 Other polymers [i](#)

There are no such residues in this entry.

## 5.8 Polymer linkage issues [i](#)

There are no chain breaks in this entry.

## 6 Fit of model and data ⓘ

### 6.1 Protein, DNA and RNA chains ⓘ

EDS was not executed - this section is therefore empty.

### 6.2 Non-standard residues in protein, DNA, RNA chains ⓘ

EDS was not executed - this section is therefore empty.

### 6.3 Carbohydrates ⓘ

EDS was not executed - this section is therefore empty.

### 6.4 Ligands ⓘ

EDS was not executed - this section is therefore empty.

### 6.5 Other polymers ⓘ

EDS was not executed - this section is therefore empty.