



Full wwPDB X-ray Structure Validation Report ⓘ

Aug 25, 2020 – 02:31 PM BST

PDB ID : 5MIW
Title : X-ray structure uridine phosphorylase from *Vibrio cholerae* in complex with uracil at 1.28 Å.
Authors : Prokofev, I.I.; Lashkov, A.A.; Balaev, V.V.; Gabdoulkhakov, A.G.; Betzel, C.; Mikhailov, A.M.
Deposited on : 2016-11-29
Resolution : 1.28 Å(reported)

This is a Full wwPDB X-ray Structure Validation Report for a publicly released PDB entry.

We welcome your comments at validation@mail.wwpdb.org

A user guide is available at

<https://www.wwpdb.org/validation/2017/XrayValidationReportHelp>

with specific help available everywhere you see the ⓘ symbol.

The following versions of software and data (see [references ⓘ](#)) were used in the production of this report:

MolProbity	:	4.02b-467
Mogul	:	1.8.5 (274361), CSD as541be (2020)
Xtriage (Phenix)	:	1.13
EDS	:	2.13
Percentile statistics	:	20191225.v01 (using entries in the PDB archive December 25th 2019)
Refmac	:	5.8.0158
CCP4	:	7.0.044 (Gargrove)
Ideal geometry (proteins)	:	Engh & Huber (2001)
Ideal geometry (DNA, RNA)	:	Parkinson et al. (1996)
Validation Pipeline (wwPDB-VP)	:	2.13

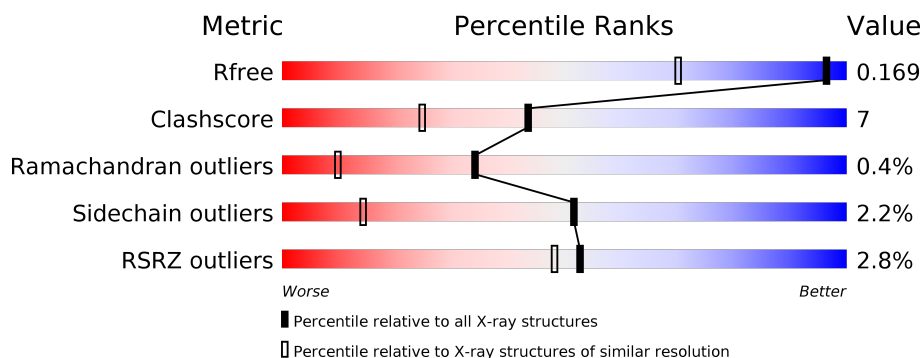
1 Overall quality at a glance ⓘ

The following experimental techniques were used to determine the structure:

X-RAY DIFFRACTION

The reported resolution of this entry is 1.28 Å.

Percentile scores (ranging between 0-100) for global validation metrics of the entry are shown in the following graphic. The table shows the number of entries on which the scores are based.



Metric	Whole archive (#Entries)	Similar resolution (#Entries, resolution range(Å))
R_{free}	130704	1850 (1.30-1.26)
Clashscore	141614	1926 (1.30-1.26)
Ramachandran outliers	138981	1860 (1.30-1.26)
Sidechain outliers	138945	1859 (1.30-1.26)
RSRZ outliers	127900	1807 (1.30-1.26)

The table below summarises the geometric issues observed across the polymeric chains and their fit to the electron density. The red, orange, yellow and green segments on the lower bar indicate the fraction of residues that contain outliers for ≥ 3 , 2, 1 and 0 types of geometric quality criteria respectively. A grey segment represents the fraction of residues that are not modelled. The numeric value for each fraction is indicated below the corresponding segment, with a dot representing fractions $\leq 5\%$. The upper red bar (where present) indicates the fraction of residues that have poor fit to the electron density. The numeric value is given above the bar.

Mol	Chain	Length	Quality of chain
1	A	253	<div> <div>92%</div> <div>7%</div> </div>
1	B	253	<div> <div>2%</div> <div>88%</div> <div>10%</div> <div>.</div> </div>
1	C	253	<div> <div>6%</div> <div>85%</div> <div>14%</div> <div>..</div> </div>
1	D	253	<div> <div>6%</div> <div>85%</div> <div>13%</div> <div>.</div> </div>
1	E	253	<div> <div>86%</div> <div>11%</div> <div>..</div> </div>
1	F	253	<div> <div>3%</div> <div>87%</div> <div>11%</div> <div>.</div> </div>

The following table lists non-polymeric compounds, carbohydrate monomers and non-standard residues in protein, DNA, RNA chains that are outliers for geometric or electron-density-fit criteria:

Mol	Type	Chain	Res	Chirality	Geometry	Clashes	Electron density
4	URA	C	304	-	X	-	-
4	URA	D	304	-	X	-	-
4	URA	F	302	-	X	-	-

2 Entry composition

There are 8 unique types of molecules in this entry. The entry contains 14909 atoms, of which 0 are hydrogens and 0 are deuteriums.

In the tables below, the ZeroOcc column contains the number of atoms modelled with zero occupancy, the AltConf column contains the number of residues with at least one atom in alternate conformation and the Trace column contains the number of residues modelled with at most 2 atoms.

- Molecule 1 is a protein called Uridine phosphorylase.

Mol	Chain	Residues	Atoms					ZeroOcc	AltConf	Trace
1	A	252	Total	C	N	O	S	0	27	0
			2115	1322	372	403	18			
1	B	252	Total	C	N	O	S	0	31	0
			2134	1337	378	401	18			
1	C	251	Total	C	N	O	S	0	33	0
			2148	1342	383	405	18			
1	D	251	Total	C	N	O	S	0	33	0
			2134	1330	380	407	17			
1	E	251	Total	C	N	O	S	0	27	0
			2107	1316	377	397	17			
1	F	252	Total	C	N	O	S	0	38	0
			2172	1355	384	416	17			

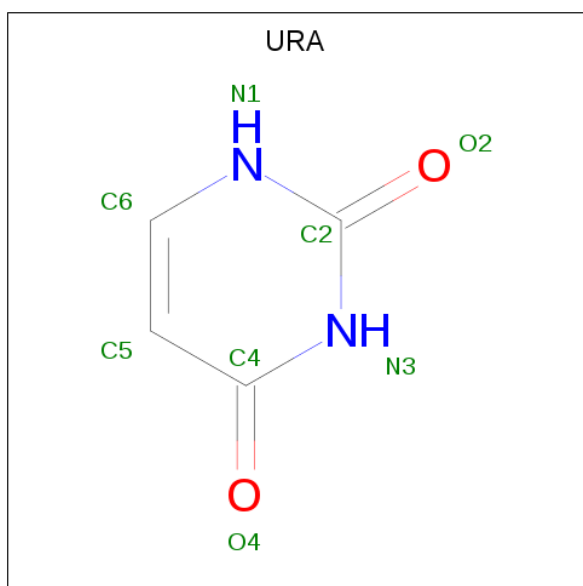
- Molecule 2 is CHLORIDE ION (three-letter code: CL) (formula: Cl).

Mol	Chain	Residues	Atoms		ZeroOcc	AltConf
2	D	2	Total	Cl	0	0
			2	2		
2	E	1	Total	Cl	0	0
			1	1		
2	B	1	Total	Cl	0	0
			1	1		
2	C	2	Total	Cl	0	0
			2	2		
2	A	1	Total	Cl	0	0
			1	1		
2	F	1	Total	Cl	0	0
			1	1		

- Molecule 3 is SODIUM ION (three-letter code: NA) (formula: Na).

Mol	Chain	Residues	Atoms	ZeroOcc	AltConf
3	B	1	Total Na 1 1	0	0
3	A	2	Total Na 2 2	0	0
3	D	1	Total Na 1 1	0	0
3	C	1	Total Na 1 1	0	0
3	E	1	Total Na 1 1	0	0

- Molecule 4 is URACIL (three-letter code: URA) (formula: C₄H₄N₂O₂).



Mol	Chain	Residues	Atoms	ZeroOcc	AltConf
4	A	1	Total C N O 8 4 2 2	0	0
4	B	1	Total C N O 8 4 2 2	0	0
4	C	1	Total C N O 8 4 2 2	0	0
4	D	1	Total C N O 8 4 2 2	0	0
4	E	1	Total C N O 8 4 2 2	0	0
4	F	1	Total C N O 8 4 2 2	0	0

- Molecule 5 is SULFATE ION (three-letter code: SO4) (formula: O₄S).



Mol	Chain	Residues	Atoms			ZeroOcc	AltConf
5	A	1	Total	O	S	0	0
			5	4	1		
5	B	1	Total	O	S	0	0
			5	4	1		

- Molecule 6 is GLYCEROL (three-letter code: GOL) (formula: $C_3H_8O_3$).



Mol	Chain	Residues	Atoms			ZeroOcc	AltConf
6	A	1	Total	C	O	0	1
			12	6	6		
6	B	1	Total	C	O	0	1
			12	6	6		

Continued on next page...

Continued from previous page...

Mol	Chain	Residues	Atoms			ZeroOcc	AltConf
6	B	1	Total	C	O	0	0
			6	3	3		
6	C	1	Total	C	O	0	1
			12	6	6		
6	C	1	Total	C	O	0	1
			12	6	6		
6	D	1	Total	C	O	0	1
			12	6	6		
6	D	1	Total	C	O	0	0
			6	3	3		
6	E	1	Total	C	O	0	1
			12	6	6		
6	F	1	Total	C	O	0	0
			6	3	3		
6	F	1	Total	C	O	0	1
			12	6	6		

- Molecule 7 is 1,2-ETHANEDIOL (three-letter code: EDO) (formula: C₂H₆O₂).



Mol	Chain	Residues	Atoms			ZeroOcc	AltConf
7	B	1	Total	C	O	0	0
			4	2	2		
7	C	1	Total	C	O	0	0
			4	2	2		

- Molecule 8 is water.

Mol	Chain	Residues	Atoms		ZeroOcc	AltConf
8	A	349	Total 355	O 355	0	6
8	B	312	Total 313	O 313	0	1
8	C	298	Total 302	O 302	0	4
8	D	289	Total 293	O 293	0	4
8	E	315	Total 318	O 318	0	3
8	F	330	Total 336	O 336	0	6

3 Residue-property plots [i](#)


These plots are drawn for all protein, RNA, DNA and oligosaccharide chains in the entry. The first graphic for a chain summarises the proportions of the various outlier classes displayed in the second graphic. The second graphic shows the sequence view annotated by issues in geometry and electron density. Residues are color-coded according to the number of geometric quality criteria for which they contain at least one outlier: green = 0, yellow = 1, orange = 2 and red = 3 or more. A red dot above a residue indicates a poor fit to the electron density ($RSRZ > 2$). Stretches of 2 or more consecutive residues without any outlier are shown as a green connector. Residues present in the sample, but not in the model, are shown in grey.

- Molecule 1: Uridine phosphorylase

Chain A: 




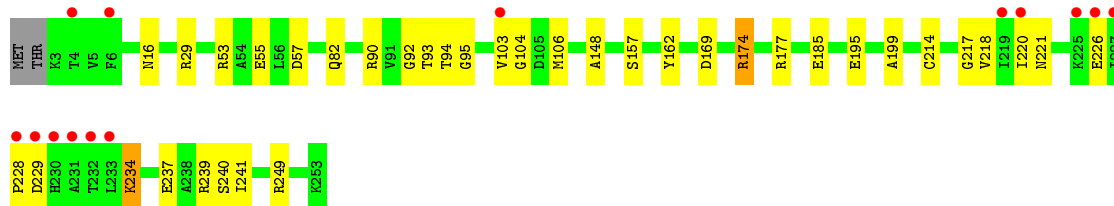
- Molecule 1: Uridine phosphorylase

Chain B: 




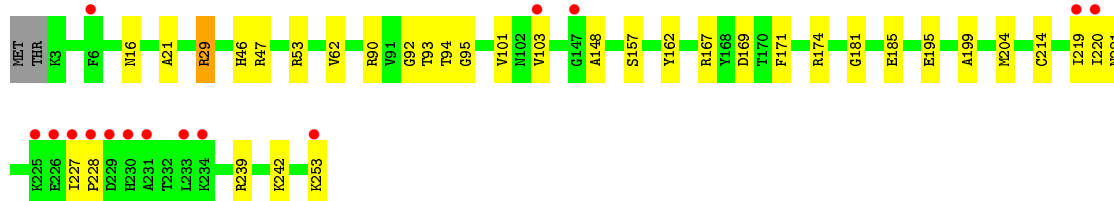
- Molecule 1: Uridine phosphorylase

Chain C: 




- Molecule 1: Uridine phosphorylase

Chain D: 




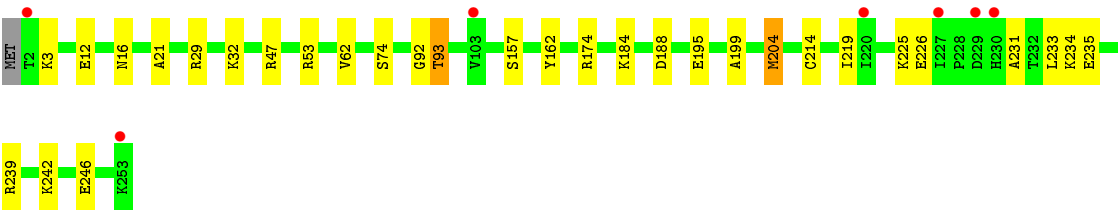
- Molecule 1: Uridine phosphorylase

Chain E:  86% 11% ..



● Molecule 1: Uridine phosphorylase

Chain F:  3% 87% 11% .



4 Data and refinement statistics

Property	Value	Source
Space group	P 1	Depositor
Cell constants a, b, c, α , β , γ	64.51Å 71.95Å 89.33Å 69.22° 72.20° 85.60°	Depositor
Resolution (Å)	32.03 – 1.28 49.45 – 1.28	Depositor EDS
% Data completeness (in resolution range)	94.1 (32.03-1.28) 94.1 (49.45-1.28)	Depositor EDS
R_{merge}	0.11	Depositor
R_{sym}	(Not available)	Depositor
$\langle I/\sigma(I) \rangle$ ¹	1.00 (at 1.28Å)	Xtriage
Refinement program	PHENIX	Depositor
R, R_{free}	0.132 , 0.169 0.133 , 0.169	Depositor DCC
R_{free} test set	3630 reflections (1.05%)	wwPDB-VP
Wilson B-factor (Å ²)	9.0	Xtriage
Anisotropy	0.117	Xtriage
Bulk solvent k_{sol} (e/Å ³), B_{sol} (Å ²)	0.35 , 63.0	EDS
L-test for twinning ²	$\langle L \rangle = 0.49$, $\langle L^2 \rangle = 0.32$	Xtriage
Estimated twinning fraction	No twinning to report.	Xtriage
F_o, F_c correlation	0.98	EDS
Total number of atoms	14909	wwPDB-VP
Average B, all atoms (Å ²)	16.0	wwPDB-VP

Xtriage's analysis on translational NCS is as follows: *The largest off-origin peak in the Patterson function is 4.45% of the height of the origin peak. No significant pseudotranslation is detected.*

¹Intensities estimated from amplitudes.

²Theoretical values of $\langle |L| \rangle$, $\langle L^2 \rangle$ for acentric reflections are 0.5, 0.333 respectively for untwinned datasets, and 0.375, 0.2 for perfectly twinned datasets.

5 Model quality

5.1 Standard geometry

Bond lengths and bond angles in the following residue types are not validated in this section: GOL, URA, CL, NA, EDO, SO4

The Z score for a bond length (or angle) is the number of standard deviations the observed value is removed from the expected value. A bond length (or angle) with $|Z| > 5$ is considered an outlier worth inspection. RMSZ is the root-mean-square of all Z scores of the bond lengths (or angles).

Mol	Chain	Bond lengths		Bond angles	
		RMSZ	# Z > 5	RMSZ	# Z > 5
1	A	0.70	0/2167	0.82	4/2922 (0.1%)
1	B	0.68	0/2189	0.82	2/2956 (0.1%)
1	C	0.64	0/2190	0.80	2/2958 (0.1%)
1	D	0.69	0/2178	0.81	6/2943 (0.2%)
1	E	0.76	0/2156	0.93	9/2914 (0.3%)
1	F	0.68	0/2209	0.82	2/2986 (0.1%)
All	All	0.69	0/13089	0.84	25/17679 (0.1%)

There are no bond length outliers.

All (25) bond angle outliers are listed below:

Mol	Chain	Res	Type	Atoms	Z	Observed(°)	Ideal(°)
1	F	174	ARG	NE-CZ-NH2	-9.21	115.70	120.30
1	E	174[A]	ARG	NE-CZ-NH2	7.83	124.22	120.30
1	E	174[C]	ARG	NE-CZ-NH2	7.83	124.22	120.30
1	E	174[B]	ARG	NE-CZ-NH2	7.83	124.22	120.30
1	E	174[A]	ARG	NE-CZ-NH1	-6.77	116.92	120.30
1	E	174[C]	ARG	NE-CZ-NH1	-6.77	116.92	120.30
1	E	174[B]	ARG	NE-CZ-NH1	-6.77	116.92	120.30
1	E	90	ARG	NE-CZ-NH1	-6.58	117.01	120.30
1	F	47	ARG	NE-CZ-NH1	-6.46	117.07	120.30
1	B	90[A]	ARG	NE-CZ-NH1	-6.42	117.09	120.30
1	B	90[B]	ARG	NE-CZ-NH1	-6.42	117.09	120.30
1	E	167	ARG	NE-CZ-NH2	-6.42	117.09	120.30
1	D	47	ARG	NE-CZ-NH1	6.05	123.33	120.30
1	C	90	ARG	NE-CZ-NH1	-6.05	117.28	120.30
1	D	174[A]	ARG	NE-CZ-NH2	-5.97	117.32	120.30
1	D	174[B]	ARG	NE-CZ-NH2	-5.97	117.32	120.30
1	E	47	ARG	NE-CZ-NH1	5.51	123.06	120.30
1	A	174[A]	ARG	NE-CZ-NH1	-5.45	117.57	120.30

Continued on next page...

Continued from previous page...

Mol	Chain	Res	Type	Atoms	Z	Observed(°)	Ideal(°)
1	A	174[B]	ARG	NE-CZ-NH1	-5.45	117.57	120.30
1	C	169	ASP	CB-CG-OD1	5.29	123.06	118.30
1	A	53[A]	ARG	NE-CZ-NH1	5.20	122.90	120.30
1	A	53[B]	ARG	NE-CZ-NH1	5.20	122.90	120.30
1	D	169[A]	ASP	CB-CG-OD1	5.04	122.84	118.30
1	D	169[B]	ASP	CB-CG-OD1	5.04	122.84	118.30
1	D	90	ARG	NE-CZ-NH1	-5.00	117.80	120.30

There are no chirality outliers.

There are no planarity outliers.

5.2 Too-close contacts ⓘ

In the following table, the Non-H and H(model) columns list the number of non-hydrogen atoms and hydrogen atoms in the chain respectively. The H(added) column lists the number of hydrogen atoms added and optimized by MolProbity. The Clashes column lists the number of clashes within the asymmetric unit, whereas Symm-Clashes lists symmetry related clashes.

Mol	Chain	Non-H	H(model)	H(added)	Clashes	Symm-Clashes
1	A	2115	0	2135	25	0
1	B	2134	0	2150	20	0
1	C	2148	0	2156	40	0
1	D	2134	0	2144	34	0
1	E	2107	0	2114	30	0
1	F	2172	0	2190	26	0
2	A	1	0	0	0	0
2	B	1	0	0	0	0
2	C	2	0	0	1	0
2	D	2	0	0	1	0
2	E	1	0	0	0	0
2	F	1	0	0	1	0
3	A	2	0	0	0	0
3	B	1	0	0	0	0
3	C	1	0	0	0	0
3	D	1	0	0	0	0
3	E	1	0	0	0	0
4	A	8	0	3	0	0
4	B	8	0	3	0	0
4	C	8	0	3	0	0
4	D	8	0	3	2	0
4	E	8	0	3	0	0

Continued on next page...

Continued from previous page...

Mol	Chain	Non-H	H(model)	H(added)	Clashes	Symm-Clashes
4	F	8	0	3	0	0
5	A	5	0	0	0	0
5	B	5	0	0	0	0
6	A	12	0	16	0	0
6	B	18	0	24	0	0
6	C	24	0	32	2	0
6	D	18	0	23	2	0
6	E	12	0	16	0	0
6	F	18	0	24	0	0
7	B	4	0	6	1	0
7	C	4	0	6	3	0
8	A	355	0	0	13	0
8	B	313	0	0	6	0
8	C	302	0	0	19	0
8	D	293	0	0	21	0
8	E	318	0	0	7	0
8	F	336	0	0	19	0
All	All	14909	0	13054	176	0

The all-atom clashscore is defined as the number of clashes found per 1000 atoms (including hydrogen atoms). The all-atom clashscore for this structure is 7.

All (176) close contacts within the same asymmetric unit are listed below, sorted by their clash magnitude.

Atom-1	Atom-2	Interatomic distance (Å)	Clash overlap (Å)
1:D:93[A]:THR:HG23	8:D:402:HOH:O	1.24	1.27
1:E:214[A]:CYS:SG	8:E:601:HOH:O	1.95	1.20
1:F:93[A]:THR:HG23	8:F:403:HOH:O	1.48	1.10
1:A:185[A]:GLU:OE2	8:A:401:HOH:O	1.69	1.08
1:A:214[B]:CYS:SG	8:A:636:HOH:O	2.06	1.08
1:C:55[B]:GLU:OE2	8:C:401:HOH:O	1.74	1.06
6:D:305[B]:GOL:H32	1:E:126[B]:GLU:OE2	1.54	1.05
1:E:46[B]:HIS:ND1	8:E:401:HOH:O	1.94	0.99
1:C:93[B]:THR:HG23	8:C:403:HOH:O	1.61	0.99
1:F:53[A]:ARG:NH1	8:F:401[A]:HOH:O	1.96	0.98
1:A:106[A]:MET:SD	8:A:537:HOH:O	2.25	0.95
1:D:94[B]:THR:HA	8:D:406:HOH:O	1.66	0.93
1:D:29[A]:ARG:HD3	8:D:512:HOH:O	1.68	0.93
1:C:55[B]:GLU:OE2	8:C:402:HOH:O	1.86	0.92
1:C:214[B]:CYS:SG	8:C:589:HOH:O	2.29	0.91
1:D:93[A]:THR:N	8:D:402:HOH:O	2.04	0.91

Continued on next page...

Continued from previous page...

Atom-1	Atom-2	Interatomic distance (Å)	Clash overlap (Å)
1:C:93[B]:THR:N	8:C:403:HOH:O	2.03	0.89
1:D:29[A]:ARG:HG2	8:D:512:HOH:O	1.72	0.89
2:F:301:CL:CL	8:F:409:HOH:O	2.27	0.87
2:C:301:CL:CL	8:C:446:HOH:O	2.28	0.86
1:F:234[B]:LYS:CD	8:F:533:HOH:O	2.24	0.86
1:D:92[A]:GLY:C	8:D:402:HOH:O	2.15	0.85
1:D:29[A]:ARG:CD	8:D:512:HOH:O	2.24	0.85
1:D:93[A]:THR:CG2	8:D:402:HOH:O	1.96	0.84
1:C:93[B]:THR:CA	8:C:403:HOH:O	2.27	0.83
6:D:305[B]:GOL:C3	1:E:126[B]:GLU:OE2	2.28	0.82
1:A:174[B]:ARG:NH1	8:A:404:HOH:O	2.13	0.81
1:F:234[B]:LYS:HD2	8:F:533:HOH:O	1.81	0.81
1:D:239[B]:ARG:HH21	1:D:239[B]:ARG:HG3	1.46	0.81
1:C:92[B]:GLY:C	8:C:403:HOH:O	2.20	0.80
1:D:93[A]:THR:CA	8:D:402:HOH:O	2.29	0.80
1:F:214[B]:CYS:SG	8:F:596:HOH:O	2.34	0.79
1:E:29[C]:ARG:HD3	8:E:560:HOH:O	1.83	0.79
2:D:302:CL:CL	8:D:471:HOH:O	2.41	0.75
1:D:185[B]:GLU:OE2	8:D:403:HOH:O	2.05	0.74
1:A:239[B]:ARG:HG2	1:A:239[B]:ARG:HH11	1.52	0.74
1:A:239[B]:ARG:NH1	8:A:402:HOH:O	2.20	0.74
1:A:239[B]:ARG:NH2	8:A:403:HOH:O	2.07	0.73
1:F:234[B]:LYS:HD3	8:F:533:HOH:O	1.88	0.72
1:B:53[B]:ARG:NH2	8:B:401:HOH:O	2.17	0.72
1:D:214[B]:CYS:SG	8:D:544:HOH:O	2.47	0.72
1:D:167[A]:ARG:NH1	8:D:405:HOH:O	2.22	0.72
1:D:29[A]:ARG:CG	8:D:512:HOH:O	2.30	0.71
1:A:16[A]:ASN:HB2	1:A:53[A]:ARG:HD2	1.70	0.71
4:D:304:URA:N1	8:D:406:HOH:O	2.23	0.70
1:F:12:GLU:OE1	8:F:402:HOH:O	2.10	0.68
1:A:239[A]:ARG:HD2	8:A:402:HOH:O	1.93	0.68
1:C:93[B]:THR:CG2	8:C:403:HOH:O	2.28	0.67
1:F:92[A]:GLY:O	8:F:403:HOH:O	2.13	0.66
1:F:16:ASN:HB2	1:F:53[A]:ARG:HD2	1.77	0.66
1:F:92[A]:GLY:C	8:F:403:HOH:O	2.33	0.66
1:D:16:ASN:HB2	1:D:53[A]:ARG:HD2	1.78	0.65
1:E:46[B]:HIS:CE1	8:E:401:HOH:O	2.40	0.65
1:F:246[B]:GLU:HG2	8:F:415:HOH:O	1.97	0.64
1:C:29[B]:ARG:NH1	1:C:92[B]:GLY:HA2	2.13	0.63
1:E:29[B]:ARG:HG2	1:E:29[B]:ARG:HH11	1.64	0.62
1:C:93[B]:THR:CB	8:C:403:HOH:O	2.46	0.62

Continued on next page...

Continued from previous page...

Atom-1	Atom-2	Interatomic distance (Å)	Clash overlap (Å)
1:F:93[A]:THR:CA	8:F:403:HOH:O	2.48	0.62
6:C:306[A]:GOL:H32	8:C:406[A]:HOH:O	1.99	0.61
1:E:253:LYS:NZ	8:E:403:HOH:O	2.31	0.61
1:B:187[B]:GLN:NE2	8:B:407:HOH:O	2.33	0.61
1:D:92[A]:GLY:O	8:D:402:HOH:O	2.16	0.60
1:F:93[A]:THR:CG2	8:F:403:HOH:O	2.21	0.60
1:A:177[A]:ARG:HH21	1:C:185[A]:GLU:CD	2.05	0.59
1:A:169[A]:ASP:OD1	8:A:406:HOH:O	2.17	0.59
1:E:29[B]:ARG:HG2	1:E:29[B]:ARG:NH1	2.17	0.59
1:C:16:ASN:HB2	1:C:53[A]:ARG:HD2	1.84	0.58
1:B:230[B]:HIS:ND1	1:B:230[B]:HIS:O	2.37	0.58
1:A:239[A]:ARG:NH1	8:A:402:HOH:O	1.72	0.58
1:A:177[A]:ARG:NH2	1:C:185[A]:GLU:OE1	2.34	0.57
1:B:26:ASP:HB3	1:B:29[B]:ARG:HG2	1.85	0.57
1:C:53[A]:ARG:NE	8:C:402:HOH:O	2.38	0.57
1:E:16:ASN:HB3	1:E:53[A]:ARG:HD2	1.86	0.57
1:F:93[A]:THR:N	8:F:403:HOH:O	2.37	0.57
1:B:29[A]:ARG:CZ	1:B:237:GLU:HB3	2.35	0.57
6:C:306[A]:GOL:C3	8:C:406[A]:HOH:O	2.52	0.56
1:C:53[A]:ARG:CD	8:C:402:HOH:O	2.54	0.56
1:A:239[B]:ARG:HH11	1:A:239[B]:ARG:CG	2.18	0.56
1:C:94[B]:THR:N	1:C:217[B]:GLY:O	2.36	0.56
1:A:242[B]:LYS:NZ	8:A:414:HOH:O	2.38	0.56
1:E:53[B]:ARG:NH1	8:E:405:HOH:O	2.34	0.56
1:B:185[A]:GLU:CD	8:B:403:HOH:O	2.44	0.55
1:E:3:LYS:HE2	1:E:4[A]:THR:N	2.21	0.55
1:B:185[A]:GLU:OE2	8:B:402:HOH:O	2.18	0.55
1:D:93[A]:THR:CB	8:D:402:HOH:O	2.37	0.55
1:D:167[A]:ARG:NH2	4:D:304:URA:O4	2.38	0.55
1:C:95[B]:GLY:HA2	1:C:220[B]:ILE:O	2.07	0.55
1:F:231:ALA:HA	1:F:234[A]:LYS:HE2	1.90	0.53
1:C:57:ASP:OD2	1:C:249[B]:ARG:HG3	2.09	0.53
1:D:148:ALA:HB2	1:D:239[A]:ARG:HD3	1.91	0.53
1:E:246[A]:GLU:OE1	1:E:249[A]:ARG:NE	2.37	0.52
1:E:97[B]:ILE:HD11	1:E:194:PHE:CD2	2.46	0.51
1:D:253:LYS:NZ	8:D:412:HOH:O	2.38	0.51
1:E:3:LYS:HE2	1:E:4[A]:THR:H	1.76	0.50
1:D:181:GLY:O	1:D:185[C]:GLU:HG3	2.12	0.50
1:E:174[B]:ARG:HD3	8:E:423:HOH:O	2.12	0.50
1:E:106[B]:MET:SD	1:E:243:VAL:HG21	2.51	0.50
1:A:188:ASP:HB3	1:E:174[B]:ARG:CD	2.42	0.50

Continued on next page...

Continued from previous page...

Atom-1	Atom-2	Interatomic distance (Å)	Clash overlap (Å)
1:E:97[B]:ILE:HD11	1:E:194:PHE:CE2	2.46	0.50
1:B:37:MET:HG2	1:B:56:LEU:HD13	1.94	0.49
1:E:29[B]:ARG:CG	1:E:29[B]:ARG:HH11	2.24	0.49
1:A:174[B]:ARG:HD3	8:A:410:HOH:O	2.12	0.49
1:C:226:GLU:OE1	1:C:226:GLU:N	2.29	0.49
1:A:174[A]:ARG:HG2	1:A:174[A]:ARG:HH21	1.78	0.48
1:E:20:LEU:HD21	1:E:89[B]:LEU:HD13	1.94	0.48
1:C:29[B]:ARG:HH12	1:C:92[B]:GLY:HA2	1.77	0.48
1:F:53[B]:ARG:NH2	8:F:406:HOH:O	2.33	0.48
1:C:94[B]:THR:O	1:C:218[B]:VAL:HA	2.14	0.48
1:D:220[A]:ILE:HG13	8:D:535:HOH:O	2.14	0.48
1:C:29[C]:ARG:HD3	1:C:241:ILE:HG21	1.96	0.47
1:C:234:LYS:HD2	1:C:234:LYS:HA	1.51	0.47
1:B:97:ILE:O	1:B:187[B]:GLN:HG2	2.15	0.47
1:C:148:ALA:HB2	1:C:239[A]:ARG:HD3	1.96	0.47
1:D:95[A]:GLY:HA2	1:D:220[A]:ILE:O	2.15	0.47
1:E:157:SER:HB3	1:E:199:ALA:HB2	1.97	0.47
1:C:53[C]:ARG:HD2	8:C:402:HOH:O	2.14	0.46
1:F:74:SER:HA	1:F:204[A]:MET:HE1	1.96	0.46
1:B:225[B]:LYS:NZ	1:B:229[B]:ASP:OD1	2.45	0.46
1:F:92[B]:GLY:HA2	8:F:409:HOH:O	2.14	0.46
1:B:3:LYS:NZ	7:B:302:EDO:H21	2.31	0.46
1:B:157:SER:HB3	1:B:199:ALA:HB2	1.98	0.46
1:C:177[A]:ARG:HH21	1:E:185[A]:GLU:CD	2.19	0.46
1:C:157:SER:HB3	1:C:199:ALA:HB2	1.98	0.46
1:C:53[C]:ARG:NH2	8:C:411:HOH:O	2.49	0.46
1:D:103:VAL:HG13	1:D:219[A]:ILE:HA	1.98	0.46
1:D:46[B]:HIS:NE2	8:D:408:HOH:O	2.27	0.45
1:C:234:LYS:HE3	1:C:237:GLU:OE2	2.16	0.45
1:C:29[C]:ARG:HD3	1:C:241:ILE:CG2	2.47	0.45
1:C:103:VAL:HG11	1:C:228:PRO:HB3	1.98	0.45
1:A:184[A]:LYS:HE3	1:A:188:ASP:OD2	2.16	0.45
1:B:21:ALA:HA	1:B:62[B]:VAL:O	2.17	0.45
1:F:157:SER:HB3	1:F:199:ALA:HB2	1.99	0.45
1:C:220[B]:ILE:HG12	1:C:221:ASN:N	2.33	0.44
1:E:230[A]:HIS:HE1	8:F:602:HOH:O	2.00	0.44
1:C:174[A]:ARG:HD2	8:C:647:HOH:O	2.16	0.44
1:E:98:GLN:HB3	1:E:100[A]:HIS:CE1	2.52	0.44
1:A:57:ASP:OD2	1:A:249[B]:ARG:HG3	2.18	0.44
1:F:204[A]:MET:HE3	1:F:204[A]:MET:HB3	1.80	0.44
1:F:219[A]:ILE:HB	1:F:233:LEU:HD22	1.99	0.44

Continued on next page...

Continued from previous page...

Atom-1	Atom-2	Interatomic distance (Å)	Clash overlap (Å)
7:C:303:EDO:H12	1:D:171:PHE:HA	1.99	0.44
1:E:3:LYS:HE2	1:E:4[B]:THR:N	2.32	0.44
1:C:82:GLN:HG2	7:C:303:EDO:H12	2.00	0.44
1:E:230[A]:HIS:CE1	8:F:602:HOH:O	2.71	0.43
1:C:92[A]:GLY:HA2	8:C:446:HOH:O	2.19	0.43
1:B:253:LYS:HD2	8:B:659:HOH:O	2.18	0.43
1:C:104:GLY:N	1:C:218[B]:VAL:O	2.37	0.43
1:E:106[B]:MET:HG3	1:E:148:ALA:HB1	1.99	0.43
8:A:590:HOH:O	1:E:174[A]:ARG:HD2	2.19	0.43
1:A:230:HIS:CE1	1:A:234[A]:LYS:HE2	2.54	0.43
1:D:204[B]:MET:HE3	1:D:204[B]:MET:HB3	1.89	0.43
1:A:16[B]:ASN:ND2	8:A:405:HOH:O	2.16	0.42
1:D:157:SER:HB3	1:D:199:ALA:HB2	2.00	0.42
1:C:29[B]:ARG:NH2	1:C:240[B]:SER:OG	2.52	0.42
1:C:82:GLN:HG2	7:C:303:EDO:C1	2.50	0.42
1:A:188:ASP:HB3	1:E:174[B]:ARG:HD2	2.02	0.42
1:D:220[B]:ILE:HD12	1:D:220[B]:ILE:HA	1.93	0.42
1:D:101:VAL:O	1:D:221[B]:ASN:ND2	2.53	0.42
1:B:204[B]:MET:HB3	1:B:204[B]:MET:HE3	1.92	0.42
1:D:227:ILE:HA	1:D:228:PRO:HD3	1.94	0.42
1:F:226[B]:GLU:N	1:F:226[B]:GLU:OE1	2.44	0.42
1:C:106[A]:MET:HE2	1:C:106[A]:MET:HB3	1.99	0.41
1:D:242:LYS:HE2	8:D:636:HOH:O	2.20	0.41
1:B:148:ALA:HB2	1:B:239:ARG:HD3	2.02	0.41
1:C:92[B]:GLY:O	8:C:403:HOH:O	2.21	0.41
1:A:21:ALA:HA	1:A:62[B]:VAL:O	2.20	0.41
1:B:227[A]:ILE:HD13	8:B:497:HOH:O	2.18	0.41
1:D:220[A]:ILE:HG13	1:D:221[A]:ASN:H	1.85	0.41
1:F:242[A]:LYS:NZ	8:F:418:HOH:O	2.53	0.41
1:F:21:ALA:HA	1:F:62[B]:VAL:O	2.19	0.41
1:F:184[A]:LYS:HE3	1:F:188:ASP:OD2	2.20	0.41
1:B:135:VAL:O	1:B:139[B]:MET:HG2	2.22	0.40
1:B:37:MET:SD	1:B:61[B]:VAL:HG21	2.61	0.40
1:F:29[A]:ARG:HD2	1:F:32:LYS:HD2	2.02	0.40
1:A:239[B]:ARG:HG2	1:A:239[B]:ARG:NH1	2.28	0.40
1:B:233:LEU:O	1:B:237:GLU:HG3	2.21	0.40
1:D:21:ALA:HA	1:D:62[B]:VAL:O	2.21	0.40

There are no symmetry-related clashes.

5.3 Torsion angles

5.3.1 Protein backbone

In the following table, the Percentiles column shows the percent Ramachandran outliers of the chain as a percentile score with respect to all X-ray entries followed by that with respect to entries of similar resolution.

The Analysed column shows the number of residues for which the backbone conformation was analysed, and the total number of residues.

Mol	Chain	Analysed	Favoured	Allowed	Outliers	Percentiles	
1	A	279/253 (110%)	273 (98%)	5 (2%)	1 (0%)	34	10
1	B	281/253 (111%)	279 (99%)	1 (0%)	1 (0%)	34	10
1	C	283/253 (112%)	279 (99%)	3 (1%)	1 (0%)	34	10
1	D	283/253 (112%)	279 (99%)	3 (1%)	1 (0%)	34	10
1	E	277/253 (110%)	274 (99%)	2 (1%)	1 (0%)	34	10
1	F	288/253 (114%)	284 (99%)	3 (1%)	1 (0%)	41	16
All	All	1691/1518 (111%)	1668 (99%)	17 (1%)	6 (0%)	34	10

All (6) Ramachandran outliers are listed below:

Mol	Chain	Res	Type
1	F	162	TYR
1	A	162	TYR
1	B	162	TYR
1	C	162	TYR
1	D	162	TYR
1	E	162	TYR

5.3.2 Protein sidechains

In the following table, the Percentiles column shows the percent sidechain outliers of the chain as a percentile score with respect to all X-ray entries followed by that with respect to entries of similar resolution.

The Analysed column shows the number of residues for which the sidechain conformation was analysed, and the total number of residues.

Mol	Chain	Analysed	Rotameric	Outliers	Percentiles	
1	A	230/203 (113%)	227 (99%)	3 (1%)	69	34
1	B	232/203 (114%)	225 (97%)	7 (3%)	41	6

Continued on next page...

Continued from previous page...

Mol	Chain	Analysed	Rotameric	Outliers	Percentiles	
1	C	231/203 (114%)	226 (98%)	5 (2%)	52	14
1	D	230/203 (113%)	227 (99%)	3 (1%)	69	34
1	E	229/203 (113%)	219 (96%)	10 (4%)	28	2
1	F	235/203 (116%)	224 (95%)	11 (5%)	26	2
All	All	1387/1218 (114%)	1348 (97%)	39 (3%)	52	7

All (39) residues with a non-rotameric sidechain are listed below:

Mol	Chain	Res	Type
1	A	174[A]	ARG
1	A	174[B]	ARG
1	A	195	GLU
1	B	3	LYS
1	B	29[A]	ARG
1	B	29[B]	ARG
1	B	195	GLU
1	B	225[A]	LYS
1	B	225[B]	LYS
1	B	233	LEU
1	C	174[A]	ARG
1	C	174[B]	ARG
1	C	195	GLU
1	C	229	ASP
1	C	234	LYS
1	D	29[A]	ARG
1	D	29[B]	ARG
1	D	195	GLU
1	E	3	LYS
1	E	4[A]	THR
1	E	4[B]	THR
1	E	29[B]	ARG
1	E	29[C]	ARG
1	E	195	GLU
1	E	225	LYS
1	E	233[A]	LEU
1	E	233[B]	LEU
1	E	242	LYS
1	F	3	LYS
1	F	93[A]	THR
1	F	93[B]	THR
1	F	195	GLU

Continued on next page...

Continued from previous page...

Mol	Chain	Res	Type
1	F	204[A]	MET
1	F	204[B]	MET
1	F	225	LYS
1	F	235[A]	GLU
1	F	235[B]	GLU
1	F	239[A]	ARG
1	F	239[B]	ARG

Some sidechains can be flipped to improve hydrogen bonding and reduce clashes. There are no such sidechains identified.

5.3.3 RNA [i](#)

There are no RNA molecules in this entry.

5.4 Non-standard residues in protein, DNA, RNA chains [i](#)

There are no non-standard protein/DNA/RNA residues in this entry.

5.5 Carbohydrates [i](#)

There are no monosaccharides in this entry.

5.6 Ligand geometry [i](#)

Of 41 ligands modelled in this entry, 14 are monoatomic - leaving 27 for Mogul analysis.

In the following table, the Counts columns list the number of bonds (or angles) for which Mogul statistics could be retrieved, the number of bonds (or angles) that are observed in the model and the number of bonds (or angles) that are defined in the Chemical Component Dictionary. The Link column lists molecule types, if any, to which the group is linked. The Z score for a bond length (or angle) is the number of standard deviations the observed value is removed from the expected value. A bond length (or angle) with $|Z| > 2$ is considered an outlier worth inspection. RMSZ is the root-mean-square of all Z scores of the bond lengths (or angles).

Mol	Type	Chain	Res	Link	Bond lengths			Bond angles		
					Counts	RMSZ	$\# Z > 2$	Counts	RMSZ	$\# Z > 2$
7	EDO	B	302	-	3,3,3	0.45	0	2,2,2	0.29	0
6	GOL	B	305[B]	-	5,5,5	0.34	0	5,5,5	0.34	0
6	GOL	B	305[A]	-	5,5,5	0.36	0	5,5,5	0.27	0
6	GOL	D	306	-	5,5,5	0.31	0	5,5,5	0.43	0

Mol	Type	Chain	Res	Link	Bond lengths			Bond angles		
					Counts	RMSZ	# Z > 2	Counts	RMSZ	# Z > 2
4	URA	C	304	-	6,8,8	4.20	6 (100%)	4,10,10	9.07	4 (100%)
4	URA	E	303	-	6,8,8	2.64	3 (50%)	4,10,10	10.54	3 (75%)
6	GOL	C	305[B]	-	5,5,5	0.34	0	5,5,5	0.46	0
5	SO4	B	304	-	4,4,4	0.14	0	6,6,6	0.23	0
6	GOL	C	305[A]	-	5,5,5	0.34	0	5,5,5	0.32	0
6	GOL	B	306	-	5,5,5	0.33	0	5,5,5	0.59	0
6	GOL	F	303	-	5,5,5	0.31	0	5,5,5	0.45	0
6	GOL	E	304[A]	-	5,5,5	0.58	0	5,5,5	1.05	0
6	GOL	E	304[B]	-	5,5,5	1.32	1 (20%)	5,5,5	1.39	1 (20%)
6	GOL	F	304[B]	-	5,5,5	0.35	0	5,5,5	0.22	0
6	GOL	A	306[B]	-	5,5,5	0.34	0	5,5,5	0.42	0
6	GOL	C	306[A]	-	5,5,5	0.38	0	5,5,5	0.88	0
6	GOL	F	304[A]	-	5,5,5	0.34	0	5,5,5	0.27	0
6	GOL	A	306[A]	-	5,5,5	0.35	0	5,5,5	0.36	0
5	SO4	A	305	-	4,4,4	0.60	0	6,6,6	0.50	0
6	GOL	C	306[B]	-	5,5,5	0.81	0	5,5,5	1.33	1 (20%)
4	URA	D	304	-	6,8,8	4.71	6 (100%)	4,10,10	8.43	2 (50%)
6	GOL	D	305[A]	-	5,5,5	0.36	0	5,5,5	0.17	0
4	URA	A	304	-	6,8,8	3.40	4 (66%)	4,10,10	10.66	3 (75%)
6	GOL	D	305[B]	-	5,5,5	0.66	0	5,5,5	2.06	3 (60%)
4	URA	F	302	-	6,8,8	4.26	5 (83%)	4,10,10	8.41	4 (100%)
7	EDO	C	303	-	3,3,3	0.45	0	2,2,2	0.61	0
4	URA	B	303	-	6,8,8	3.08	4 (66%)	4,10,10	7.77	3 (75%)

In the following table, the Chirals column lists the number of chiral outliers, the number of chiral centers analysed, the number of these observed in the model and the number defined in the Chemical Component Dictionary. Similar counts are reported in the Torsion and Rings columns. '-' means no outliers of that kind were identified.

Mol	Type	Chain	Res	Link	Chirals	Torsions	Rings
7	EDO	B	302	-	-	1/1/1/1	-
6	GOL	B	305[B]	-	-	2/4/4/4	-
6	GOL	B	305[A]	-	-	0/4/4/4	-
6	GOL	D	306	-	-	0/4/4/4	-
4	URA	C	304	-	-	-	0/1/1/1
4	URA	E	303	-	-	-	0/1/1/1
6	GOL	C	305[B]	-	-	2/4/4/4	-
6	GOL	C	305[A]	-	-	2/4/4/4	-
6	GOL	B	306	-	-	0/4/4/4	-
6	GOL	F	303	-	-	0/4/4/4	-

Continued on next page...

Continued from previous page...

Mol	Type	Chain	Res	Link	Chirals	Torsions	Rings
6	GOL	E	304[A]	-	-	2/4/4/4	-
6	GOL	E	304[B]	-	-	2/4/4/4	-
6	GOL	F	304[B]	-	-	2/4/4/4	-
6	GOL	A	306[B]	-	-	2/4/4/4	-
6	GOL	C	306[A]	-	-	0/4/4/4	-
6	GOL	F	304[A]	-	-	0/4/4/4	-
6	GOL	A	306[A]	-	-	0/4/4/4	-
6	GOL	C	306[B]	-	-	3/4/4/4	-
4	URA	D	304	-	-	-	0/1/1/1
6	GOL	D	305[A]	-	-	0/4/4/4	-
4	URA	A	304	-	-	-	0/1/1/1
6	GOL	D	305[B]	-	-	1/4/4/4	-
4	URA	F	302	-	-	-	0/1/1/1
7	EDO	C	303	-	-	0/1/1/1	-
4	URA	B	303	-	-	-	0/1/1/1

All (29) bond length outliers are listed below:

Mol	Chain	Res	Type	Atoms	Z	Observed(Å)	Ideal(Å)
4	D	304	URA	C4-N3	6.53	1.44	1.33
4	F	302	URA	C2-N3	5.40	1.48	1.38
4	D	304	URA	C6-N1	5.36	1.45	1.34
4	F	302	URA	C4-N3	5.33	1.42	1.33
4	B	303	URA	C4-N3	5.23	1.42	1.33
4	D	304	URA	C2-N3	5.18	1.48	1.38
4	C	304	URA	C2-N1	5.10	1.48	1.38
4	C	304	URA	C6-N1	4.99	1.45	1.34
4	D	304	URA	C2-N1	4.89	1.47	1.38
4	F	302	URA	C6-N1	4.73	1.44	1.34
4	C	304	URA	C2-N3	4.66	1.47	1.38
4	A	304	URA	C4-N3	4.54	1.40	1.33
4	C	304	URA	C4-N3	4.53	1.40	1.33
4	A	304	URA	C6-N1	4.46	1.44	1.34
4	E	303	URA	C4-N3	4.43	1.40	1.33
4	F	302	URA	C2-N1	4.33	1.46	1.38
4	A	304	URA	C2-N1	4.22	1.46	1.38
4	E	303	URA	C6-N1	3.47	1.41	1.34
4	B	303	URA	C6-N1	3.24	1.41	1.34
4	F	302	URA	C5-C6	2.98	1.44	1.38
4	A	304	URA	C2-N3	2.83	1.43	1.38
4	B	303	URA	C2-N1	2.73	1.43	1.38

Continued on next page...

Continued from previous page...

Mol	Chain	Res	Type	Atoms	Z	Observed(Å)	Ideal(Å)
4	C	304	URA	O4-C4	-2.66	1.17	1.24
4	D	304	URA	C5-C6	2.51	1.43	1.38
4	E	303	URA	C2-N1	2.38	1.42	1.38
4	C	304	URA	C5-C6	2.36	1.43	1.38
4	B	303	URA	C2-N3	2.34	1.42	1.38
6	E	304[B]	GOL	O1-C1	2.31	1.52	1.42
4	D	304	URA	O4-C4	-2.17	1.19	1.24

All (24) bond angle outliers are listed below:

Mol	Chain	Res	Type	Atoms	Z	Observed(°)	Ideal(°)
4	E	303	URA	N1-C2-N3	-16.97	114.94	128.43
4	A	304	URA	N1-C2-N3	-16.71	115.14	128.43
4	C	304	URA	N1-C2-N3	-13.89	117.39	128.43
4	B	303	URA	N1-C2-N3	-13.46	117.73	128.43
4	A	304	URA	C6-N1-C2	12.84	120.75	114.42
4	D	304	URA	N1-C2-N3	-12.30	118.65	128.43
4	E	303	URA	C6-N1-C2	11.94	120.31	114.42
4	F	302	URA	N1-C2-N3	-11.53	119.26	128.43
4	D	304	URA	C6-N1-C2	11.28	119.98	114.42
4	F	302	URA	C6-N1-C2	11.22	119.95	114.42
4	C	304	URA	C6-N1-C2	11.06	119.87	114.42
4	B	303	URA	C6-N1-C2	6.97	117.86	114.42
4	F	302	URA	C5-C6-N1	-3.84	119.19	123.96
4	E	303	URA	C5-C4-N3	-3.63	115.33	123.31
4	B	303	URA	C5-C4-N3	-3.40	115.83	123.31
4	F	302	URA	C5-C4-N3	-3.04	116.63	123.31
4	C	304	URA	C5-C6-N1	-2.79	120.49	123.96
6	D	305[B]	GOL	O3-C3-C2	2.77	123.50	110.20
6	D	305[B]	GOL	C3-C2-C1	2.72	122.30	111.70
4	A	304	URA	C5-C4-N3	-2.63	117.51	123.31
6	C	306[B]	GOL	C3-C2-C1	2.62	121.87	111.70
4	C	304	URA	C5-C4-N3	-2.39	118.05	123.31
6	D	305[B]	GOL	O2-C2-C3	2.18	118.74	109.12
6	E	304[B]	GOL	O1-C1-C2	2.09	120.23	110.20

There are no chirality outliers.

All (19) torsion outliers are listed below:

Mol	Chain	Res	Type	Atoms
6	C	305[A]	GOL	O1-C1-C2-O2
6	C	305[A]	GOL	O1-C1-C2-C3

Continued on next page...

Continued from previous page...

Mol	Chain	Res	Type	Atoms
6	C	305[B]	GOL	O1-C1-C2-C3
6	E	304[A]	GOL	O1-C1-C2-C3
6	E	304[B]	GOL	O1-C1-C2-C3
6	A	306[B]	GOL	O1-C1-C2-C3
6	C	306[B]	GOL	O1-C1-C2-C3
6	C	305[B]	GOL	O1-C1-C2-O2
6	E	304[B]	GOL	O1-C1-C2-O2
6	B	305[B]	GOL	O1-C1-C2-C3
6	F	304[B]	GOL	C1-C2-C3-O3
6	C	306[B]	GOL	C1-C2-C3-O3
6	E	304[A]	GOL	O1-C1-C2-O2
6	C	306[B]	GOL	O1-C1-C2-O2
7	B	302	EDO	O1-C1-C2-O2
6	A	306[B]	GOL	O1-C1-C2-O2
6	F	304[B]	GOL	O2-C2-C3-O3
6	B	305[B]	GOL	O1-C1-C2-O2
6	D	305[B]	GOL	O2-C2-C3-O3

There are no ring outliers.

5 monomers are involved in 10 short contacts:

Mol	Chain	Res	Type	Clashes	Symm-Clashes
7	B	302	EDO	1	0
6	C	306[A]	GOL	2	0
4	D	304	URA	2	0
6	D	305[B]	GOL	2	0
7	C	303	EDO	3	0

5.7 Other polymers [i](#)

There are no such residues in this entry.

5.8 Polymer linkage issues [i](#)

There are no chain breaks in this entry.

6 Fit of model and data ⓘ

6.1 Protein, DNA and RNA chains ⓘ

In the following table, the column labelled ‘#RSRZ> 2’ contains the number (and percentage) of RSRZ outliers, followed by percent RSRZ outliers for the chain as percentile scores relative to all X-ray entries and entries of similar resolution. The OWAB column contains the minimum, median, 95th percentile and maximum values of the occupancy-weighted average B-factor per residue. The column labelled ‘Q< 0.9’ lists the number of (and percentage) of residues with an average occupancy less than 0.9.

Mol	Chain	Analysed	<RSRZ>	#RSRZ>2	OWAB(Å ²)	Q<0.9
1	A	252/253 (99%)	-0.34	1 (0%) 92 90	6, 11, 21, 37	0
1	B	252/253 (99%)	-0.20	6 (2%) 59 54	6, 11, 26, 51	2 (0%)
1	C	251/253 (99%)	-0.08	14 (5%) 24 20	6, 12, 31, 59	1 (0%)
1	D	251/253 (99%)	0.05	15 (5%) 21 17	6, 13, 37, 68	1 (0%)
1	E	251/253 (99%)	-0.30	0 100 100	6, 10, 21, 36	0
1	F	252/253 (99%)	-0.18	7 (2%) 53 48	6, 11, 32, 54	1 (0%)
All	All	1509/1518 (99%)	-0.17	43 (2%) 53 48	6, 11, 29, 68	5 (0%)

All (43) RSRZ outliers are listed below:

Mol	Chain	Res	Type	RSRZ
1	C	227	ILE	7.5
1	D	227	ILE	6.7
1	D	219[A]	ILE	5.4
1	C	219[A]	ILE	5.3
1	D	225	LYS	5.2
1	B	2	THR	5.1
1	F	227	ILE	4.6
1	D	228	PRO	4.5
1	B	231	ALA	4.5
1	C	220[A]	ILE	4.2
1	F	103[A]	VAL	4.1
1	D	226	GLU	4.0
1	D	231	ALA	4.0
1	C	229	ASP	3.8
1	B	232	THR	3.8
1	D	103	VAL	3.5
1	D	253	LYS	3.5
1	C	230	HIS	3.3
1	D	229	ASP	3.2

Continued on next page...

Continued from previous page...

Mol	Chain	Res	Type	RSRZ
1	D	6	PHE	3.2
1	C	232	THR	3.2
1	D	220[A]	ILE	3.1
1	F	229	ASP	3.0
1	D	230	HIS	2.9
1	F	220[A]	ILE	2.9
1	B	253	LYS	2.8
1	C	226	GLU	2.8
1	D	233	LEU	2.7
1	F	230	HIS	2.6
1	F	253	LYS	2.5
1	F	2	THR	2.5
1	B	233	LEU	2.5
1	C	231	ALA	2.4
1	C	103	VAL	2.4
1	C	233	LEU	2.4
1	C	6[A]	PHE	2.3
1	C	4	THR	2.1
1	D	147	GLY	2.1
1	D	234	LYS	2.1
1	C	225	LYS	2.1
1	C	228	PRO	2.1
1	A	230	HIS	2.0
1	B	230[A]	HIS	2.0

6.2 Non-standard residues in protein, DNA, RNA chains [i](#)

There are no non-standard protein/DNA/RNA residues in this entry.

6.3 Carbohydrates [i](#)

There are no monosaccharides in this entry.

6.4 Ligands [i](#)

In the following table, the Atoms column lists the number of modelled atoms in the group and the number defined in the chemical component dictionary. The B-factors column lists the minimum, median, 95th percentile and maximum values of B factors of atoms in the group. The column labelled 'Q< 0.9' lists the number of atoms with occupancy less than 0.9.

Mol	Type	Chain	Res	Atoms	RSCC	RSR	B-factors(\AA^2)	Q<0.9
5	SO4	A	305	5/5	0.74	0.17	52,52,52,53	5
6	GOL	C	305[B]	6/6	0.83	0.15	24,27,28,28	6
6	GOL	C	305[A]	6/6	0.83	0.15	14,14,15,15	6
7	EDO	B	302	4/4	0.89	0.10	44,44,45,45	0
6	GOL	F	303	6/6	0.89	0.12	24,25,27,28	0
6	GOL	D	306	6/6	0.89	0.11	27,30,30,32	0
7	EDO	C	303	4/4	0.91	0.12	45,45,46,47	0
6	GOL	C	306[B]	6/6	0.92	0.12	15,17,18,18	6
6	GOL	C	306[A]	6/6	0.92	0.12	20,21,22,23	6
6	GOL	D	305[B]	6/6	0.93	0.13	19,21,22,22	6
6	GOL	D	305[A]	6/6	0.93	0.13	9,10,11,14	6
6	GOL	A	306[A]	6/6	0.95	0.10	11,12,13,14	6
2	CL	E	301	1/1	0.95	0.08	37,37,37,37	0
6	GOL	B	305[A]	6/6	0.95	0.09	9,10,11,14	6
6	GOL	B	306	6/6	0.95	0.10	15,17,21,24	0
6	GOL	B	305[B]	6/6	0.95	0.09	21,24,24,25	6
6	GOL	E	304[A]	6/6	0.95	0.08	13,14,15,15	6
6	GOL	E	304[B]	6/6	0.95	0.08	12,14,14,14	6
6	GOL	A	306[B]	6/6	0.95	0.10	20,20,22,23	6
6	GOL	F	304[A]	6/6	0.96	0.10	8,9,10,13	6
5	SO4	B	304	5/5	0.96	0.16	10,11,11,16	5
6	GOL	F	304[B]	6/6	0.96	0.10	27,28,28,28	6
4	URA	D	304	8/8	0.96	0.11	9,14,16,17	8
4	URA	F	302	8/8	0.97	0.08	9,13,14,15	8
4	URA	C	304	8/8	0.97	0.09	9,12,14,15	8
2	CL	B	301	1/1	0.98	0.05	46,46,46,46	0
2	CL	D	302	1/1	0.99	0.04	20,20,20,20	1
4	URA	E	303	8/8	0.99	0.06	7,7,8,8	0
4	URA	A	304	8/8	0.99	0.05	9,9,10,11	0
2	CL	D	301	1/1	0.99	0.05	20,20,20,20	1
3	NA	A	303	1/1	0.99	0.06	19,19,19,19	0
3	NA	A	302	1/1	0.99	0.08	12,12,12,12	1
2	CL	A	301	1/1	1.00	0.05	12,12,12,12	1
3	NA	D	303	1/1	1.00	0.04	21,21,21,21	0
3	NA	B	307	1/1	1.00	0.04	18,18,18,18	0
3	NA	C	307	1/1	1.00	0.06	12,12,12,12	1
2	CL	C	301	1/1	1.00	0.03	18,18,18,18	1
2	CL	F	301	1/1	1.00	0.03	23,23,23,23	1
2	CL	C	302	1/1	1.00	0.05	20,20,20,20	1
3	NA	E	302	1/1	1.00	0.05	10,10,10,10	1
4	URA	B	303	8/8	1.00	0.05	6,7,8,8	0

6.5 Other polymers [i](#)

There are no such residues in this entry.