



Full wwPDB X-ray Structure Validation Report ⓘ

Aug 8, 2020 – 04:19 PM BST

PDB ID : 5MJ3
Title : INTERLEUKIN-23 COMPLEX WITH AN ANTAGONISTIC ALPHABODY, CRYSTAL FORM 1
Authors : Desmet, J.; Verstraete, K.; Bloch, Y.; Lorent, E.; Wen, Y.; Devreese, B.; Vandenbroucke, K.; Loverix, S.; Hettmann, T.; Deroo, S.; Somers, K.; Hendriks, P.; Lasters, I.; Savvides, S.N.
Deposited on : 2016-11-29
Resolution : 1.74 Å(reported)

This is a Full wwPDB X-ray Structure Validation Report for a publicly released PDB entry.

We welcome your comments at validation@mail.wwpdb.org

A user guide is available at

<https://www.wwpdb.org/validation/2017/XrayValidationReportHelp>

with specific help available everywhere you see the ⓘ symbol.

The following versions of software and data (see [references ⓘ](#)) were used in the production of this report:

MolProbity : 4.02b-467
Mogul : 1.8.5 (274361), CSD as541be (2020)
Xtriage (Phenix) : 1.13
EDS : 2.13.1
Percentile statistics : 20191225.v01 (using entries in the PDB archive December 25th 2019)
Refmac : 5.8.0158
CCP4 : 7.0.044 (Gargrove)
Ideal geometry (proteins) : Engh & Huber (2001)
Ideal geometry (DNA, RNA) : Parkinson et al. (1996)
Validation Pipeline (wwPDB-VP) : 2.13.1

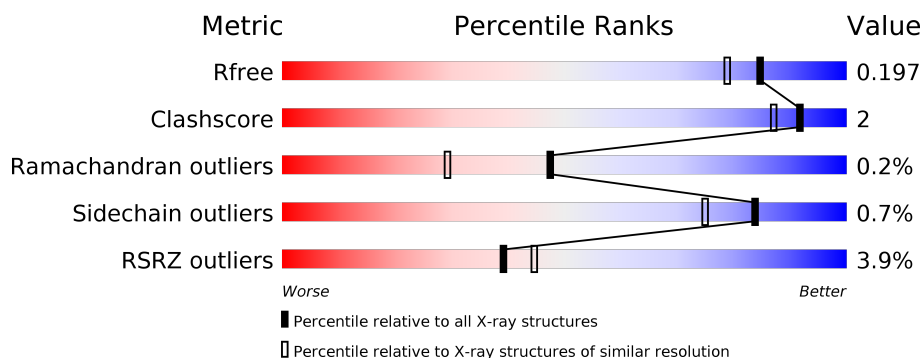
1 Overall quality at a glance

The following experimental techniques were used to determine the structure:

X-RAY DIFFRACTION

The reported resolution of this entry is 1.74 Å.

Percentile scores (ranging between 0-100) for global validation metrics of the entry are shown in the following graphic. The table shows the number of entries on which the scores are based.



Metric	Whole archive (#Entries)	Similar resolution (#Entries, resolution range(Å))
R_{free}	130704	3764 (1.76-1.72)
Clashscore	141614	3923 (1.76-1.72)
Ramachandran outliers	138981	3878 (1.76-1.72)
Sidechain outliers	138945	3878 (1.76-1.72)
RSRZ outliers	127900	3705 (1.76-1.72)

The table below summarises the geometric issues observed across the polymeric chains and their fit to the electron density. The red, orange, yellow and green segments on the lower bar indicate the fraction of residues that contain outliers for ≥ 3 , 2, 1 and 0 types of geometric quality criteria respectively. A grey segment represents the fraction of residues that are not modelled. The numeric value for each fraction is indicated below the corresponding segment, with a dot representing fractions $\leq 5\%$. The upper red bar (where present) indicates the fraction of residues that have poor fit to the electron density. The numeric value is given above the bar.

Mol	Chain	Length	Quality of chain
1	A	306	<div> <div>2%</div> <div> <div></div> <div>95%</div> <div></div> </div> <div></div> </div>
2	B	179	<div> <div>3%</div> <div> <div></div> <div>83%</div> <div></div> </div> <div>13%</div> </div>
3	C	118	<div> <div>8%</div> <div> <div></div> <div>70%</div> <div></div> </div> <div>26%</div> </div>
4	D	5	<div> <div></div> <div> <div></div> <div>60%</div> <div></div> </div> <div>40%</div> </div>

2 Entry composition [i](#)

There are 8 unique types of molecules in this entry. The entry contains 9053 atoms, of which 4254 are hydrogens and 0 are deuteriums.

In the tables below, the ZeroOcc column contains the number of atoms modelled with zero occupancy, the AltConf column contains the number of residues with at least one atom in alternate conformation and the Trace column contains the number of residues modelled with at most 2 atoms.

- Molecule 1 is a protein called Interleukin-12 subunit beta.

Mol	Chain	Residues	Atoms						ZeroOcc	AltConf	Trace
1	A	302	Total	C	H	N	O	S	0	13	0
			4742	1541	2322	390	474	15			

- Molecule 2 is a protein called Interleukin-23 subunit alpha.

Mol	Chain	Residues	Atoms						ZeroOcc	AltConf	Trace
2	B	155	Total	C	H	N	O	S	0	9	0
			2384	774	1175	209	219	7			

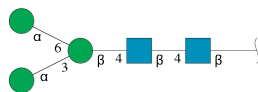
There are 9 discrepancies between the modelled and reference sequences:

Chain	Residue	Modelled	Actual	Comment	Reference
B	190	GLY	-	expression tag	UNP Q9NPF7
B	191	THR	-	expression tag	UNP Q9NPF7
B	192	LYS	-	expression tag	UNP Q9NPF7
B	193	HIS	-	expression tag	UNP Q9NPF7
B	194	HIS	-	expression tag	UNP Q9NPF7
B	195	HIS	-	expression tag	UNP Q9NPF7
B	196	HIS	-	expression tag	UNP Q9NPF7
B	197	HIS	-	expression tag	UNP Q9NPF7
B	198	HIS	-	expression tag	UNP Q9NPF7

- Molecule 3 is a protein called ALPHABODY MA12.

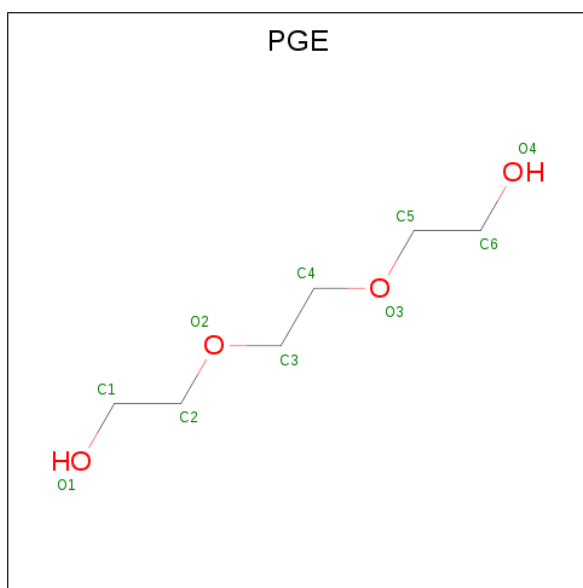
Mol	Chain	Residues	Atoms						ZeroOcc	AltConf	Trace
3	C	87	Total	C	H	N	O	S	0	1	0
			1328	423	671	105	122	7			

- Molecule 4 is an oligosaccharide called alpha-D-mannopyranose-(1-3)-[alpha-D-mannopyranose-(1-6)]beta-D-mannopyranose-(1-4)-2-acetamido-2-deoxy-beta-D-glucopyranose-(1-4)-2-acetamido-2-deoxy-beta-D-glucopyranose.



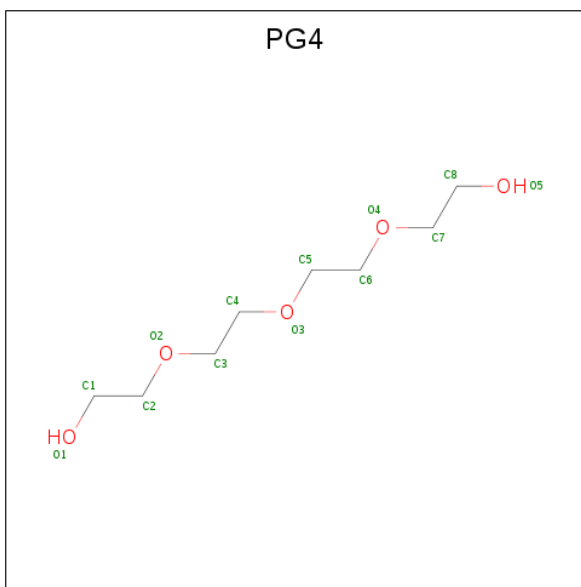
Mol	Chain	Residues	Atoms					ZeroOcc	AltConf	Trace
4	D	5	Total	C	H	N	O	0	0	0
			113	34	52	2	25			

- Molecule 5 is TRIETHYLENE GLYCOL (three-letter code: PGE) (formula: $C_6H_{14}O_4$).



Mol	Chain	Residues	Atoms				ZeroOcc	AltConf
5	A	1	Total	C	H	O	0	0
			18	6	8	4		
5	A	1	Total	C	H	O	0	0
			18	6	8	4		

- Molecule 6 is TETRAETHYLENE GLYCOL (three-letter code: PG4) (formula: $C_8H_{18}O_5$).



Mol	Chain	Residues	Atoms				ZeroOcc	AltConf
6	A	1	Total	C	H	O	0	0
			31	8	18	5		

- Molecule 7 is SODIUM ION (three-letter code: NA) (formula: Na).

Mol	Chain	Residues	Atoms		ZeroOcc	AltConf
7	A	2	Total	Na	0	0
			2	2		

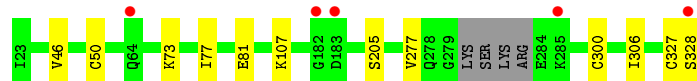
- Molecule 8 is water.

Mol	Chain	Residues	Atoms		ZeroOcc	AltConf
8	A	263	Total	O	0	0
			263	263		
8	B	117	Total	O	0	0
			117	117		
8	C	37	Total	O	0	0
			37	37		

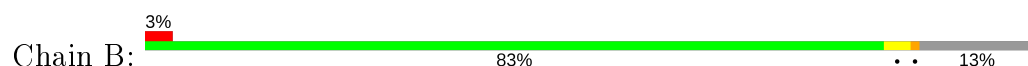
3 Residue-property plots [i](#)

These plots are drawn for all protein, RNA, DNA and oligosaccharide chains in the entry. The first graphic for a chain summarises the proportions of the various outlier classes displayed in the second graphic. The second graphic shows the sequence view annotated by issues in geometry and electron density. Residues are color-coded according to the number of geometric quality criteria for which they contain at least one outlier: green = 0, yellow = 1, orange = 2 and red = 3 or more. A red dot above a residue indicates a poor fit to the electron density ($RSRZ > 2$). Stretches of 2 or more consecutive residues without any outlier are shown as a green connector. Residues present in the sample, but not in the model, are shown in grey.

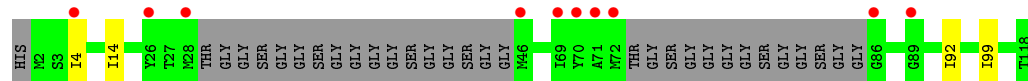
- Molecule 1: Interleukin-12 subunit beta



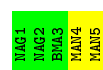
- Molecule 2: Interleukin-23 subunit alpha



- Molecule 3: ALPHABODY MA12



- Molecule 4: alpha-D-mannopyranose-(1-3)-[alpha-D-mannopyranose-(1-6)]beta-D-mannopyranose-(1-4)-2-acetamido-2-deoxy-beta-D-glucopyranose-(1-4)-2-acetamido-2-deoxy-beta-D-glucopyranose



4 Data and refinement statistics

Property	Value	Source
Space group	P 1 21 1	Depositor
Cell constants a, b, c, α , β , γ	56.96 Å 56.74 Å 100.07 Å 90.00° 99.73° 90.00°	Depositor
Resolution (Å)	40.61 – 1.74 49.32 – 1.74	Depositor EDS
% Data completeness (in resolution range)	97.9 (40.61-1.74) 97.9 (49.32-1.74)	Depositor EDS
R_{merge}	(Not available)	Depositor
R_{sym}	(Not available)	Depositor
$\langle I/\sigma(I) \rangle$ ¹	1.55 (at 1.74 Å)	Xtriage
Refinement program	PHENIX 1.8.3_1479	Depositor
R, R_{free}	0.165 , 0.198 0.165 , 0.197	Depositor DCC
R_{free} test set	3156 reflections (5.00%)	wwPDB-VP
Wilson B-factor (Å ²)	29.1	Xtriage
Anisotropy	0.280	Xtriage
Bulk solvent k_{sol} (e/Å ³), B_{sol} (Å ²)	0.39 , 52.8	EDS
L-test for twinning ²	$\langle L \rangle = 0.49$, $\langle L^2 \rangle = 0.32$	Xtriage
Estimated twinning fraction	No twinning to report.	Xtriage
F_o, F_c correlation	0.97	EDS
Total number of atoms	9053	wwPDB-VP
Average B, all atoms (Å ²)	43.0	wwPDB-VP

Xtriage's analysis on translational NCS is as follows: *The largest off-origin peak in the Patterson function is 5.31% of the height of the origin peak. No significant pseudotranslation is detected.*

¹Intensities estimated from amplitudes.

²Theoretical values of $\langle |L| \rangle$, $\langle L^2 \rangle$ for acentric reflections are 0.5, 0.333 respectively for untwinned datasets, and 0.375, 0.2 for perfectly twinned datasets.

5 Model quality [i](#)

5.1 Standard geometry [i](#)

Bond lengths and bond angles in the following residue types are not validated in this section: BMA, NAG, NA, PG4, PGE, YCM, MAN

The Z score for a bond length (or angle) is the number of standard deviations the observed value is removed from the expected value. A bond length (or angle) with $|Z| > 5$ is considered an outlier worth inspection. RMSZ is the root-mean-square of all Z scores of the bond lengths (or angles).

Mol	Chain	Bond lengths		Bond angles	
		RMSZ	$\# Z > 5$	RMSZ	$\# Z > 5$
1	A	0.39	0/2522	0.59	0/3432
2	B	0.41	0/1271	0.57	0/1730
3	C	0.41	0/650	0.47	0/868
All	All	0.40	0/4443	0.57	0/6030

Chiral center outliers are detected by calculating the chiral volume of a chiral center and verifying if the center is modelled as a planar moiety or with the opposite hand. A planarity outlier is detected by checking planarity of atoms in a peptide group, atoms in a mainchain group or atoms of a sidechain that are expected to be planar.

Mol	Chain	#Chirality outliers	#Planarity outliers
2	B	0	1

There are no bond length outliers.

There are no bond angle outliers.

There are no chirality outliers.

All (1) planarity outliers are listed below:

Mol	Chain	Res	Type	Group
2	B	27	SER	Peptide

5.2 Too-close contacts [i](#)

In the following table, the Non-H and H(model) columns list the number of non-hydrogen atoms and hydrogen atoms in the chain respectively. The H(added) column lists the number of hydrogen atoms added and optimized by MolProbity. The Clashes column lists the number of clashes within the asymmetric unit, whereas Symm-Clashes lists symmetry related clashes.

Mol	Chain	Non-H	H(model)	H(added)	Clashes	Symm-Clashes
1	A	2420	2322	2309	7	0
2	B	1209	1175	1173	6	0
3	C	657	671	671	2	0
4	D	61	52	52	0	0
5	A	20	16	28	2	0
6	A	13	18	18	0	0
7	A	2	0	0	0	0
8	A	263	0	0	0	0
8	B	117	0	0	3	0
8	C	37	0	0	0	0
All	All	4799	4254	4251	14	0

The all-atom clashscore is defined as the number of clashes found per 1000 atoms (including hydrogen atoms). The all-atom clashscore for this structure is 2.

All (14) close contacts within the same asymmetric unit are listed below, sorted by their clash magnitude.

Atom-1	Atom-2	Interatomic distance (Å)	Clash overlap (Å)
1:A:50:CYS:O	1:A:73:LYS:NZ	2.38	0.56
2:B:62:GLU:OE1	8:B:201:HOH:O	2.18	0.54
1:A:205:SER:O	2:B:65:THR:HG21	2.11	0.51
1:A:327:CYS:O	1:A:328:SER:CB	2.59	0.51
1:A:107:LYS:NZ	5:A:406:PGE:H1	2.29	0.47
3:C:14:ILE:HD11	3:C:99:ILE:HG23	1.96	0.47
3:C:4:ILE:HD11	3:C:92:ILE:HD11	1.98	0.46
1:A:46[B]:VAL:CG2	1:A:77:ILE:HG13	2.46	0.45
2:B:29:ALA:HA	8:B:262:HOH:O	2.16	0.44
1:A:107:LYS:CE	5:A:406:PGE:H32	2.48	0.44
2:B:92[A]:ARG:NH2	8:B:206:HOH:O	2.52	0.41
1:A:277:VAL:HG22	1:A:306[B]:ILE:CD1	2.50	0.41
2:B:28:PRO:O	2:B:28:PRO:CG	2.69	0.41

There are no symmetry-related clashes.

5.3 Torsion angles [i](#)

5.3.1 Protein backbone [i](#)

In the following table, the Percentiles column shows the percent Ramachandran outliers of the chain as a percentile score with respect to all X-ray entries followed by that with respect to entries of similar resolution.

The Analysed column shows the number of residues for which the backbone conformation was analysed, and the total number of residues.

Mol	Chain	Analysed	Favoured	Allowed	Outliers	Percentiles	
1	A	311/306 (102%)	306 (98%)	5 (2%)	0	100	100
2	B	160/179 (89%)	158 (99%)	1 (1%)	1 (1%)	25	10
3	C	81/118 (69%)	81 (100%)	0	0	100	100
All	All	552/603 (92%)	545 (99%)	6 (1%)	1 (0%)	47	29

All (1) Ramachandran outliers are listed below:

Mol	Chain	Res	Type
2	B	28	PRO

5.3.2 Protein sidechains ⓘ

In the following table, the Percentiles column shows the percent sidechain outliers of the chain as a percentile score with respect to all X-ray entries followed by that with respect to entries of similar resolution.

The Analysed column shows the number of residues for which the sidechain conformation was analysed, and the total number of residues.

Mol	Chain	Analysed	Rotameric	Outliers	Percentiles	
1	A	273/277 (99%)	271 (99%)	2 (1%)	84	75
2	B	129/152 (85%)	127 (98%)	2 (2%)	62	44
3	C	61/80 (76%)	61 (100%)	0	100	100
All	All	463/509 (91%)	459 (99%)	4 (1%)	84	67

All (4) residues with a non-rotameric sidechain are listed below:

Mol	Chain	Res	Type
1	A	81	GLU
1	A	300	CYS
2	B	118[A]	ASP
2	B	118[B]	ASP

Some sidechains can be flipped to improve hydrogen bonding and reduce clashes. There are no such sidechains identified.

5.3.3 RNA ⓘ

There are no RNA molecules in this entry.

5.4 Non-standard residues in protein, DNA, RNA chains ⓘ

1 non-standard protein/DNA/RNA residue is modelled in this entry.

In the following table, the Counts columns list the number of bonds (or angles) for which Mogul statistics could be retrieved, the number of bonds (or angles) that are observed in the model and the number of bonds (or angles) that are defined in the Chemical Component Dictionary. The Link column lists molecule types, if any, to which the group is linked. The Z score for a bond length (or angle) is the number of standard deviations the observed value is removed from the expected value. A bond length (or angle) with $|Z| > 2$ is considered an outlier worth inspection. RMSZ is the root-mean-square of all Z scores of the bond lengths (or angles).

Mol	Type	Chain	Res	Link	Bond lengths			Bond angles		
					Counts	RMSZ	$\# Z > 2$	Counts	RMSZ	$\# Z > 2$
3	YCM	C	60	3	7,9,10	1.11	0	4,10,12	0.52	0

In the following table, the Chirals column lists the number of chiral outliers, the number of chiral centers analysed, the number of these observed in the model and the number defined in the Chemical Component Dictionary. Similar counts are reported in the Torsion and Rings columns. '-' means no outliers of that kind were identified.

Mol	Type	Chain	Res	Link	Chirals	Torsions	Rings
3	YCM	C	60	3	-	0/6/8/10	-

There are no bond length outliers.

There are no bond angle outliers.

There are no chirality outliers.

There are no torsion outliers.

There are no ring outliers.

No monomer is involved in short contacts.

5.5 Carbohydrates ⓘ

5 monosaccharides are modelled in this entry.

In the following table, the Counts columns list the number of bonds (or angles) for which Mogul statistics could be retrieved, the number of bonds (or angles) that are observed in the model and the number of bonds (or angles) that are defined in the Chemical Component Dictionary. The

Link column lists molecule types, if any, to which the group is linked. The Z score for a bond length (or angle) is the number of standard deviations the observed value is removed from the expected value. A bond length (or angle) with $|Z| > 2$ is considered an outlier worth inspection. RMSZ is the root-mean-square of all Z scores of the bond lengths (or angles).

Mol	Type	Chain	Res	Link	Bond lengths			Bond angles		
					Counts	RMSZ	# Z > 2	Counts	RMSZ	# Z > 2
4	NAG	D	1	1,4	14,14,15	0.51	0	17,19,21	0.49	0
4	NAG	D	2	4	14,14,15	0.24	0	17,19,21	0.38	0
4	BMA	D	3	4	11,11,12	0.78	0	15,15,17	0.88	0
4	MAN	D	4	4	11,11,12	0.77	0	15,15,17	1.01	2 (13%)
4	MAN	D	5	4	11,11,12	0.71	0	15,15,17	1.02	2 (13%)

In the following table, the Chirals column lists the number of chiral outliers, the number of chiral centers analysed, the number of these observed in the model and the number defined in the Chemical Component Dictionary. Similar counts are reported in the Torsion and Rings columns. '-' means no outliers of that kind were identified.

Mol	Type	Chain	Res	Link	Chirals	Torsions	Rings
4	NAG	D	1	1,4	-	0/6/23/26	0/1/1/1
4	NAG	D	2	4	-	0/6/23/26	0/1/1/1
4	BMA	D	3	4	-	0/2/19/22	0/1/1/1
4	MAN	D	4	4	-	1/2/19/22	0/1/1/1
4	MAN	D	5	4	-	2/2/19/22	0/1/1/1

There are no bond length outliers.

All (4) bond angle outliers are listed below:

Mol	Chain	Res	Type	Atoms	Z	Observed(°)	Ideal(°)
4	D	4	MAN	C1-O5-C5	2.37	115.40	112.19
4	D	5	MAN	C1-O5-C5	2.33	115.35	112.19
4	D	4	MAN	O2-C2-C3	-2.23	105.66	110.14
4	D	5	MAN	O2-C2-C3	-2.18	105.78	110.14

There are no chirality outliers.

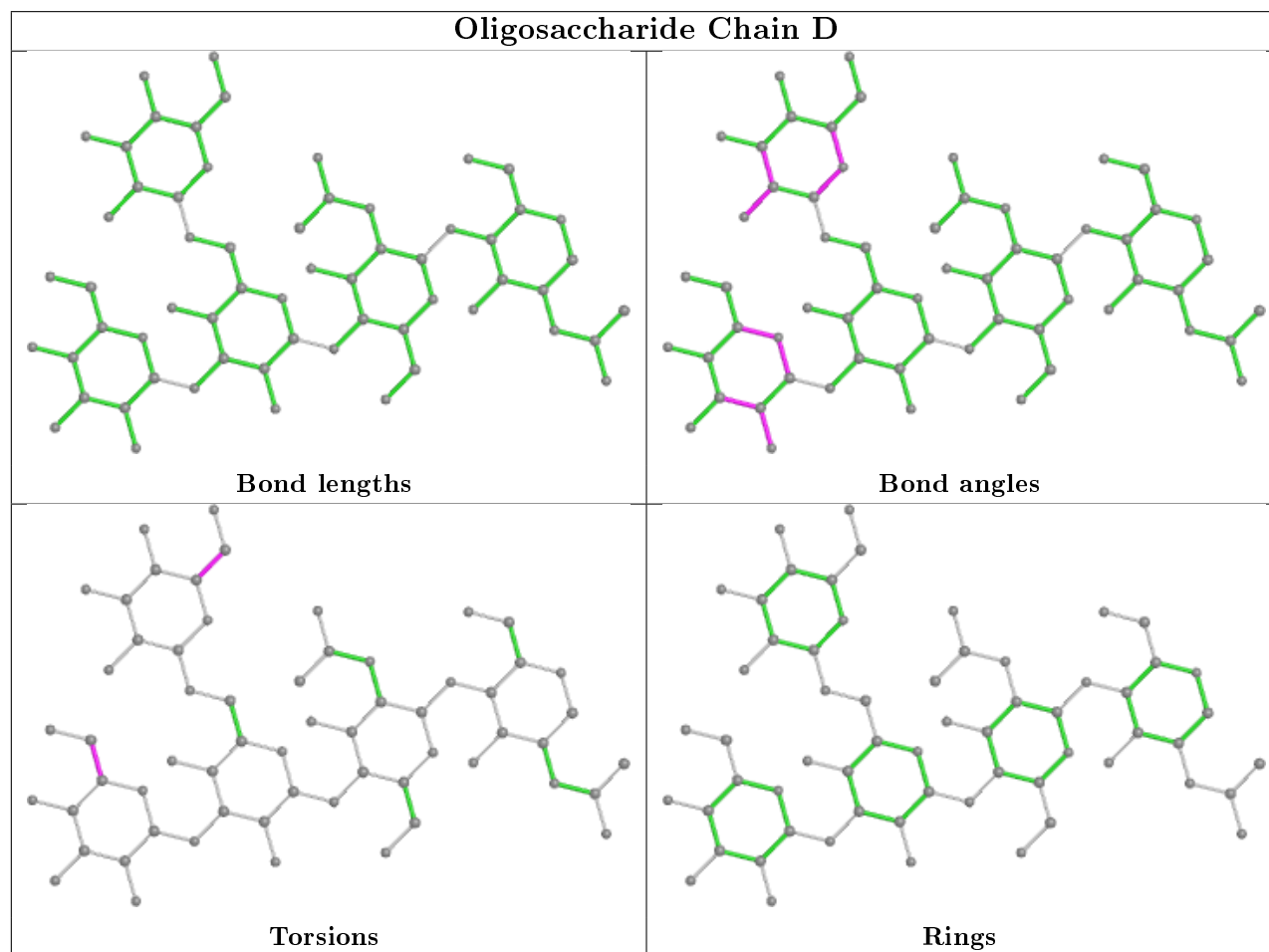
All (3) torsion outliers are listed below:

Mol	Chain	Res	Type	Atoms
4	D	5	MAN	C4-C5-C6-O6
4	D	5	MAN	O5-C5-C6-O6
4	D	4	MAN	O5-C5-C6-O6

There are no ring outliers.

No monomer is involved in short contacts.

The following is a two-dimensional graphical depiction of Mogul quality analysis of bond lengths, bond angles, torsion angles, and ring geometry for oligosaccharide.



5.6 Ligand geometry [i](#)

Of 5 ligands modelled in this entry, 2 are monoatomic - leaving 3 for Mogul analysis.

In the following table, the Counts columns list the number of bonds (or angles) for which Mogul statistics could be retrieved, the number of bonds (or angles) that are observed in the model and the number of bonds (or angles) that are defined in the Chemical Component Dictionary. The Link column lists molecule types, if any, to which the group is linked. The Z score for a bond length (or angle) is the number of standard deviations the observed value is removed from the expected value. A bond length (or angle) with $|Z| > 2$ is considered an outlier worth inspection. RMSZ is the root-mean-square of all Z scores of the bond lengths (or angles).

Mol	Type	Chain	Res	Link	Bond lengths			Bond angles		
					Counts	RMSZ	$\# Z > 2$	Counts	RMSZ	$\# Z > 2$
5	PGE	A	406	-	9,9,9	0.50	0	8,8,8	0.60	0
6	PG4	A	407	-	12,12,12	0.52	0	11,11,11	0.31	0
5	PGE	A	408	-	9,9,9	0.51	0	8,8,8	0.32	0

In the following table, the Chirals column lists the number of chiral outliers, the number of chiral centers analysed, the number of these observed in the model and the number defined in the Chemical Component Dictionary. Similar counts are reported in the Torsion and Rings columns. '-' means no outliers of that kind were identified.

Mol	Type	Chain	Res	Link	Chirals	Torsions	Rings
5	PGE	A	406	-	-	4/7/7/7	-
6	PG4	A	407	-	-	3/10/10/10	-
5	PGE	A	408	-	-	4/7/7/7	-

There are no bond length outliers.

There are no bond angle outliers.

There are no chirality outliers.

All (11) torsion outliers are listed below:

Mol	Chain	Res	Type	Atoms
5	A	406	PGE	C1-C2-O2-C3
5	A	408	PGE	O3-C5-C6-O4
6	A	407	PG4	O1-C1-C2-O2
5	A	406	PGE	O1-C1-C2-O2
6	A	407	PG4	O2-C3-C4-O3
5	A	408	PGE	C3-C4-O3-C5
5	A	406	PGE	C6-C5-O3-C4
5	A	408	PGE	C6-C5-O3-C4
5	A	406	PGE	O2-C3-C4-O3
5	A	408	PGE	O2-C3-C4-O3
6	A	407	PG4	O3-C5-C6-O4

There are no ring outliers.

1 monomer is involved in 2 short contacts:

Mol	Chain	Res	Type	Clashes	Symm-Clashes
5	A	406	PGE	2	0

5.7 Other polymers [i](#)

There are no such residues in this entry.

5.8 Polymer linkage issues [i](#)

There are no chain breaks in this entry.

6 Fit of model and data ⓘ

6.1 Protein, DNA and RNA chains ⓘ

In the following table, the column labelled ‘#RSRZ> 2’ contains the number (and percentage) of RSRZ outliers, followed by percent RSRZ outliers for the chain as percentile scores relative to all X-ray entries and entries of similar resolution. The OWAB column contains the minimum, median, 95th percentile and maximum values of the occupancy-weighted average B-factor per residue. The column labelled ‘Q< 0.9’ lists the number of (and percentage) of residues with an average occupancy less than 0.9.

Mol	Chain	Analysed	<RSRZ>	#RSRZ>2		OWAB(Å ²)	Q<0.9
1	A	302/306 (98%)	0.08	5 (1%)	70 76	22, 37, 77, 128	0
2	B	155/179 (86%)	0.14	6 (3%)	39 45	21, 35, 101, 124	1 (0%)
3	C	86/118 (72%)	0.55	10 (11%)	4 6	28, 44, 77, 99	1 (1%)
All	All	543/603 (90%)	0.17	21 (3%)	39 45	21, 37, 83, 128	2 (0%)

All (21) RSRZ outliers are listed below:

Mol	Chain	Res	Type	RSRZ
2	B	27	SER	5.1
3	C	71	ALA	4.9
3	C	70	TYR	4.8
3	C	4	ILE	4.3
3	C	69	ILE	4.0
3	C	89	GLY	3.9
1	A	182	GLY	3.9
2	B	150	LEU	3.8
3	C	72	MET	3.6
2	B	65	THR	3.1
2	B	28	PRO	2.9
3	C	86	GLY	2.8
3	C	46	MET	2.7
2	B	189	PRO	2.3
2	B	67	ASP	2.3
3	C	28	MET	2.2
1	A	328	SER	2.2
3	C	26	TYR	2.1
1	A	183	ASP	2.1
1	A	64	GLN	2.0
1	A	285	LYS	2.0

6.2 Non-standard residues in protein, DNA, RNA chains ⓘ

In the following table, the Atoms column lists the number of modelled atoms in the group and the number defined in the chemical component dictionary. The B-factors column lists the minimum, median, 95th percentile and maximum values of B factors of atoms in the group. The column labelled 'Q< 0.9' lists the number of atoms with occupancy less than 0.9.

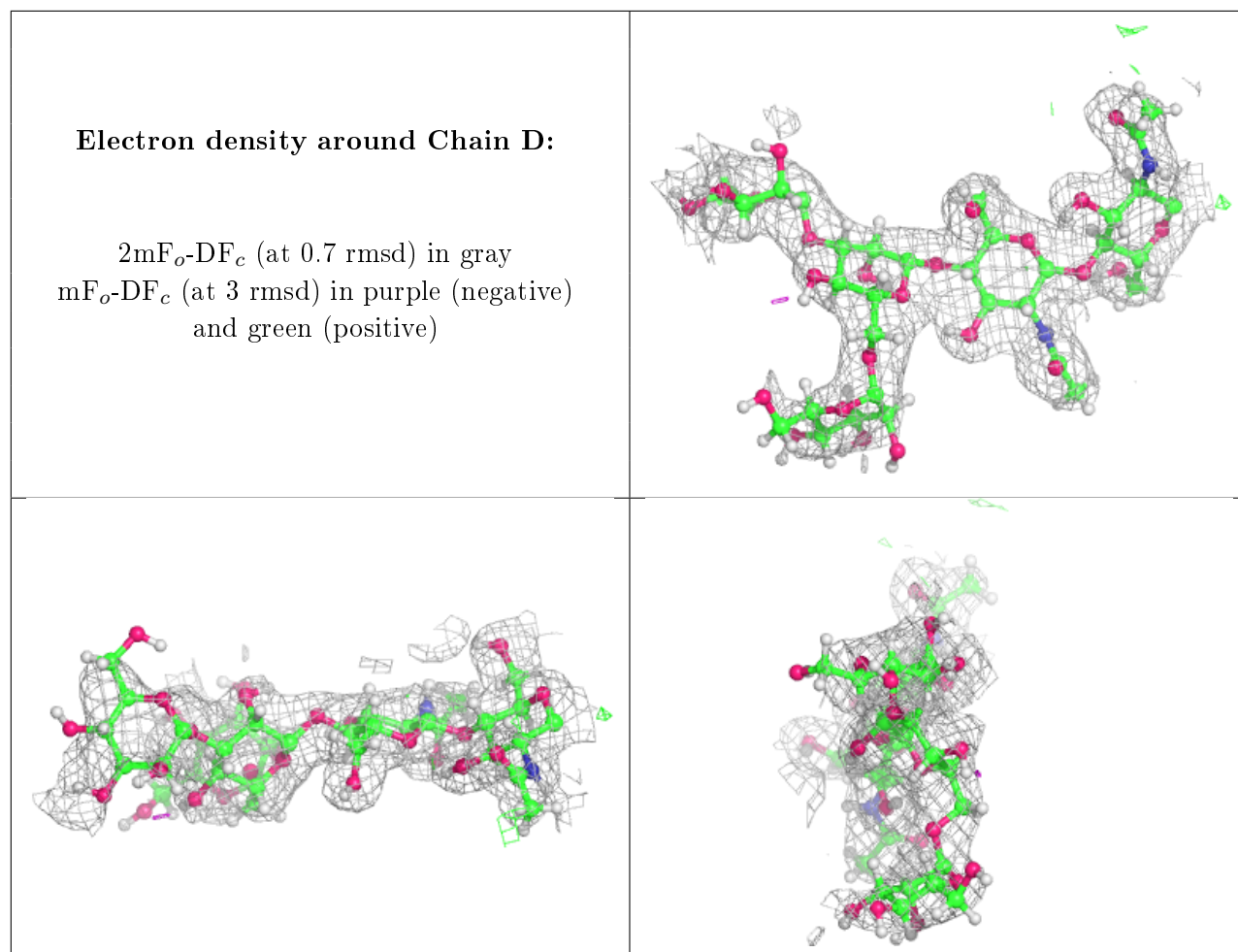
Mol	Type	Chain	Res	Atoms	RSCC	RSR	B-factors(Å ²)	Q<0.9
3	YCM	C	60	10/11	0.94	0.15	38,44,79,81	0

6.3 Carbohydrates ⓘ

In the following table, the Atoms column lists the number of modelled atoms in the group and the number defined in the chemical component dictionary. The B-factors column lists the minimum, median, 95th percentile and maximum values of B factors of atoms in the group. The column labelled 'Q< 0.9' lists the number of atoms with occupancy less than 0.9.

Mol	Type	Chain	Res	Atoms	RSCC	RSR	B-factors(Å ²)	Q<0.9
4	MAN	D	4	11/12	0.69	0.23	99,117,121,125	0
4	MAN	D	5	11/12	0.78	0.30	86,102,104,107	0
4	BMA	D	3	11/12	0.91	0.09	51,63,70,76	0
4	NAG	D	1	14/15	0.97	0.06	28,33,37,37	0
4	NAG	D	2	14/15	0.98	0.07	33,40,44,45	0

The following is a graphical depiction of the model fit to experimental electron density for oligosaccharide. Each fit is shown from different orientation to approximate a three-dimensional view.



6.4 Ligands [i](#)

In the following table, the Atoms column lists the number of modelled atoms in the group and the number defined in the chemical component dictionary. The B-factors column lists the minimum, median, 95th percentile and maximum values of B factors of atoms in the group. The column labelled 'Q<0.9' lists the number of atoms with occupancy less than 0.9.

Mol	Type	Chain	Res	Atoms	RSCC	RSR	B-factors(Å ²)	Q<0.9
5	PGE	A	406	10/10	0.66	0.26	58,76,89,89	0
6	PG4	A	407	13/13	0.77	0.18	65,69,75,75	0
5	PGE	A	408	10/10	0.81	0.13	64,88,93,93	0
7	NA	A	410	1/1	0.93	0.18	36,36,36,36	0
7	NA	A	409	1/1	0.99	0.05	39,39,39,39	0

6.5 Other polymers [i](#)

There are no such residues in this entry.